

**DRAFT**

**Target Remediation Concentrations:**  
**NDEP Worker Basic Comparison Levels or Alternate Comparison Criteria**

Group	Analyte	BCL/Comparison Criteria
Dioxins/Furans	Dioxin TEQ	2,700 ppt*
Hexachlorobenzene	Hexachlorobenzene (HCB)	1.2 mg/kg
Asbestos	Long Chrysotile Fiber Count	> 5 fibers**
Asbestos	Long Amphibole Fiber Count	1 or greater fibers**
Arsenic	Arsenic	7.2 mg/kg***
Metals	Cobalt	331 mg/kg
Metals	Lead	800 mg/kg
Metals	Magnesium	100,000 mg/kg
Metals	Manganese	13,700 mg/kg
Perchlorate	Perchlorate	795 mg/kg
PAHs	B(a)P TEQ	0.234 mg/kg

\* Site-specific value  
 \*\* There are no BCLs for asbestos; values shown were developed for Parcels A/B  
 \*\*\* BCL for Arsenic is less than background; value shown is maximum background

**northgate**  
 environmental management, inc.

**TRONOX**  
 www.ngem.com

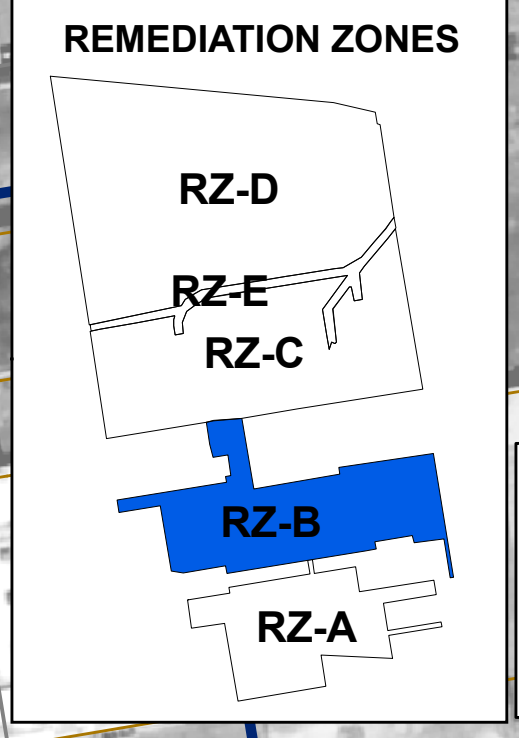
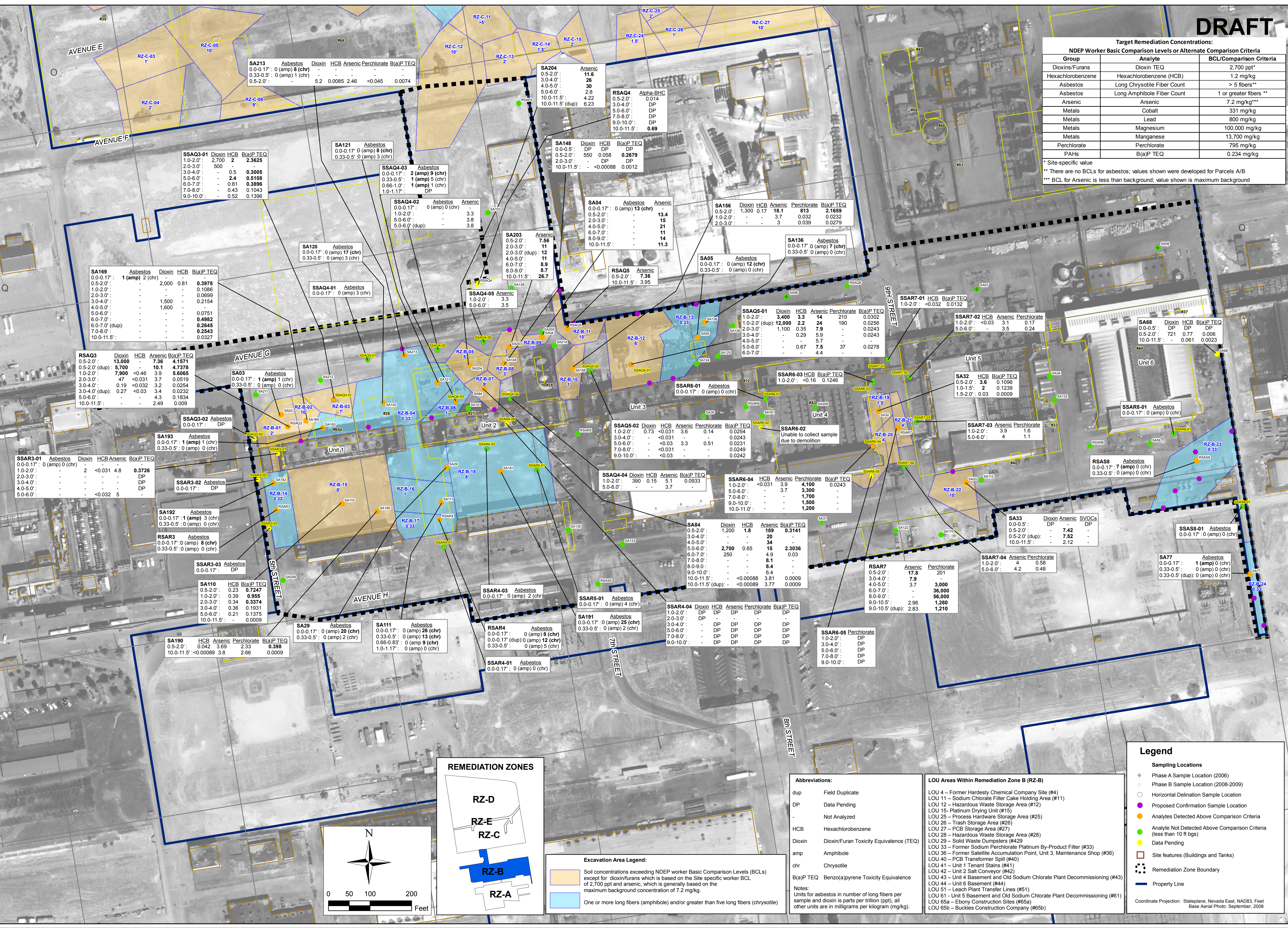
NO.	REVISIONS:	DESCRIPTION:	DATE:	BY:

DESIGNED BY:	DRAWN BY:	CHECKED BY:	APPROVED BY:
NGEM	OS	NGEM	NGEM

**RZ-B EXCAVATION AREAS AND NATURE AND EXTENT OF CONTAMINATION**  
 RZ-B Excavation Plan  
 Tronox LLC  
 Henderson, Nevada

PROJECT NUMBER: 2027.01 T90  
 DATE: 07/14/10  
 SCALE: 1 in = 100 ft

FIGURE NUMBER: 1  
 SHEET NUMBER: 1



**Excavation Area Legend:**

- Soil concentrations exceeding NDEP worker Basic Comparison Levels (BCLs) except for dioxin/furans which is based on the Site specific worker BCL of 2,700 ppt and arsenic, which is generally based on the maximum background concentration of 7.2 mg/kg.
- One or more long fibers (amphibole) and/or greater than five long fibers (chrysotile)

**Abbreviations:**

- dup Field Duplicate
- DP Data Pending
- Not Analyzed
- HCB Hexachlorobenzene
- Dioxin Dioxin/Furan Toxicity Equivalence (TEQ)
- amp Amphibole
- chr Chrysotile
- B(a)P TEQ Benzo(a)pyrene Toxicity Equivalence

**Notes:**  
 Units for asbestos in number of long fibers per sample and dioxin is parts per trillion (ppt), all other units are in milligrams per kilogram (mg/kg).

**LOU Areas Within Remediation Zone B (RZ-B)**

- LOU 4 - Former Hardesty Chemical Company Site (#4)
- LOU 11 - Sodium Chlorate Filter Cake Holding Area (#11)
- LOU 12 - Hazardous Waste Storage Area (#12)
- LOU 15 - Platinum Drying Unit (#15)
- LOU 25 - Process Hardware Storage Area (#25)
- LOU 26 - Trash Storage Area (#26)
- LOU 27 - PCB Storage Area (#27)
- LOU 28 - Hazardous Waste Storage Area (#28)
- LOU 29 - Solid Waste Dumpsters (#29)
- LOU 33 - Former Sodium Perchlorate Platinum By-Product Filter (#33)
- LOU 36 - Former Satellite Accumulation Point, Unit 3, Maintenance Shop (#36)
- LOU 40 - PCB Transformer Spill (#40)
- LOU 41 - Unit 1 Tenant Stains (#41)
- LOU 42 - Unit 2 Salt Conveyor (#42)
- LOU 43 - Unit 4 Basement and Old Sodium Chlorate Plant Decommissioning (#43)
- LOU 44 - Unit 6 Basement (#44)
- LOU 51 - Leach Plant Transfer Lines (#51)
- LOU 61 - Unit 5 Basement and Old Sodium Chlorate Plant Decommissioning (#61)
- LOU 65a - Ebony Construction Sites (#65a)
- LOU 65b - Buckles Construction Company (#65b)

**Legend**

- Phase A Sample Location (2006)
- Phase B Sample Location (2008-2009)
- Horizontal Delineation Sample Location
- Proposed Confirmation Sample Location
- Analytes Detected Above Comparison Criteria
- Analyte Not Detected Above Comparison Criteria (less than 10 ft bgs)
- Data Pending
- Site features (Buildings and Tanks)
- Remediation Zone Boundary
- Property Line

Coordinate Projection: Stateplane, Nevada East, NAD83, Feet  
 Base Aerial Photo: September, 2008