

Table 1 - Seep Well Field (SWF) Operational Metrics

Nevada Environmental Response Trust Groundwater Extraction and Treatment System Enhanced Operational Metrics																			
Date	LS #1 Flow (gpm)	PC-116R (East Well)		PC-99R2/R3 (Center Well)		PC-115R (West Well)		PC-117		PC-118		PC-119		PC-120		PC-121		PC-133	
		Flow (gpm)	Water Elevation (ft amsl)	Flow (gpm)	Water Elevation (ft amsl)	Flow (gpm)	Water Elevation (ft amsl)	Flow (gpm)	Water Elevation (ft amsl)	Flow (gpm)	Water Elevation (ft amsl)	Flow (gpm)	Water Elevation (ft amsl)	Flow (gpm)	Water Elevation (ft amsl)	Flow (gpm)	Water Elevation (ft amsl)	Flow (gpm)	Water Elevation (ft amsl)
08/01/22	485	160	1537.01	81	1542.89	130	1543.16	107	1533.90	66	1548.43	109	1549.01	51	1550.05	21	1551.21	5.7	< 1520.00
08/02/22	486	159	1536.92	81	1542.87	130	1543.09	107	1533.80	66	1548.38	109	1548.95	51	1550.00	21	1551.16	5.6	< 1520.00
08/03/22	487	159	1536.85	81	1542.87	130	1543.02	107	1533.72	66	1548.33	109	1548.90	51	1549.95	20	1551.12	5.5	< 1520.00
08/04/22	487	159	1536.78	80	1542.86	130	1542.96	107	1533.65	66	1548.29	109	1548.84	51	1549.90	20	1551.08	5.5	< 1520.00
08/05/22	489	159	1536.75	80	1542.87	130	1542.93	107	1533.60	66	1548.26	109	1548.81	51	1549.87	20	1551.05	5.5	< 1520.00
08/06/22	497	159	1536.70	80	1542.86	130	1542.89	107	1533.56	66	1548.22	109	1548.77	51	1549.84	20	1551.02	5.4	< 1520.00
08/07/22	496	159	1536.63	80	1542.84	130	1542.84	107	1533.50	66	1548.18	109	1548.73	51	1549.80	20	1550.98	5.4	< 1520.00
08/08/22	499	159	1536.56	80	1542.83	130	1542.80	107	1533.46	66	1548.15	109	1548.69	51	1549.76	20	1550.94	5.4	< 1520.00
08/09/22	499	159	1536.50	80	1542.84	130	1542.76	107	1533.41	66	1548.11	109	1548.65	51	1549.73	20	1550.91	5.4	< 1520.00
08/10/22	500	159	1536.45	80	1542.85	130	1542.73	107	1533.37	66	1548.08	109	1548.62	51	1549.70	20	1550.88	5.5	< 1520.00
08/11/22	499	159	1536.42	80	1542.84	130	1542.71	107	1533.35	66	1548.06	109	1548.60	51	1549.68	20	1550.86	5.4	< 1520.00
08/12/22	499	159	1536.40	79	1542.86	130	1542.70	107	1533.34	66	1548.06	109	1548.60	51	1549.67	20	1550.86	5.4	< 1520.00
08/13/22	499	159	1536.37	79	1542.86	130	1542.69	107	1533.32	66	1548.04	109	1548.59	51	1549.66	20	1550.85	5.5	< 1520.00
08/14/22	499	159	1536.34	79	1542.86	130	1542.67	107	1533.29	66	1548.02	109	1548.57	51	1549.65	20	1550.83	5.4	< 1520.00
08/15/22	409	130	1538.56	65	1543.54	106	1543.97	88	1536.06	55	1548.96	91	1549.25	42	1550.24	17	1551.26	5.9	< 1520.00
08/16/22	499	159	1536.53	79	1542.56	130	1542.79	107	1533.52	66	1548.09	109	1548.64	51	1549.72	20	1550.90	6.0	< 1520.00
08/17/22	500	159	1536.42	79	1542.54	130	1542.72	107	1533.43	66	1548.03	109	1548.58	51	1549.65	20	1550.84	5.8	< 1520.00
08/18/22	501	159	1536.36	79	1542.52	130	1542.67	107	1533.37	66	1547.98	109	1548.54	51	1549.61	20	1550.80	5.8	< 1520.00
08/19/22	500	159	1536.31	79	1542.51	130	1542.64	107	1533.33	66	1547.96	109	1548.51	51	1549.59	20	1550.78	5.7	< 1520.00
08/20/22	512	159	1536.27	79	1542.50	130	1542.61	107	1533.29	66	1547.93	109	1548.49	51	1549.57	20	1550.76	5.7	< 1520.00
08/21/22	499	159	1536.23	78	1542.50	129	1542.58	107	1533.25	66	1547.90	109	1548.46	51	1549.54	20	1550.73	5.6	< 1520.00
8/22/22 ¹	471	150	1536.92	74	1543.03	122	1542.97	101	1534.09	62	1548.17	102	1548.66	48	1549.70	19	1550.86	5.8	< 1520.00
08/23/22	496	159	1536.28	79	1542.91	130	1542.60	107	1533.30	66	1547.88	109	1548.46	51	1549.53	20	1550.75	6.0	< 1520.00
08/24/22	494	159	1536.19	78	1542.93	129	1542.55	107	1533.24	66	1547.84	109	1548.42	51	1549.49	20	1550.71	5.9	< 1520.00
8/25/22 ²	464	149	1536.78	74	1543.24	122	1542.88	101	1534.00	62	1547.99	102	1548.57	48	1549.57	19	1550.79	5.5	< 1520.00
8/26/22 ²	475	157	1536.51	78	1543.30	127	1542.75	105	1533.59	65	1547.89	107	1548.54	50	1549.54	20	1550.79	6.3	< 1520.00
08/27/22	483	159	1536.18	79	1543.19	129	1542.55	107	1533.25	66	1547.73	109	1548.41	51	1549.43	20	1550.70	6.0	< 1520.00
08/28/22	484	159	1536.10	79	1543.17	129	1542.51	107	1533.19	65	1547.69	109	1548.37	51	1549.39	20	1550.67	5.9	< 1520.00
08/29/22	483	159	1536.05	78	1543.16	129	1542.48	107	1533.15	65	1547.67	109	1548.35	51	1549.37	20	1550.65	5.8	< 1520.00
08/30/22	484	159	1536.05	78	1543.17	129	1542.48	107	1533.14	65	1547.67	109	1548.35	51	1549.37	20	1550.64	5.8	< 1520.00
08/31/22	485	159	1536.05	78	1543.18	129	1542.50	107	1533.14	65	1547.71	109	1548.42	32	1549.83	20	1550.72	5.9	< 1520.00
Monthly Average	489	158	1536.53	78	1542.90	128	1542.78	106	1533.54	65	1548.05	108	1548.62	50	1549.69	20	1550.87	5.7	< 1520.00
Analytical	Conc (mg/L)	Date	Conc (mg/L)	Date	Conc (mg/L)	Date	Conc (mg/L)	Date	Conc ² (mg/L)	Date	Conc (mg/L)	Date	Conc (mg/L)	Date	Conc (mg/L)	Date	Conc (mg/L)	Date	
Perchlorate	12	8/2/2022	14	8/2/2022	10	8/2/2022	6.9	8/2/2022	4.4	8/2/2022	1.7	8/2/2022	0.41	8/2/2022	0.44	8/2/2022	1.9	8/2/2022	
Hexavalent Chromium	0.0072	8/2/2022	0.00072	8/2/2022	ND	8/2/2022	0.0065	8/2/2022	ND	8/2/2022	ND	8/2/2022	ND	8/2/2022	ND	8/2/2022	ND	8/2/2022	
Total Chromium	0.0048 _{J,B}	8/2/2022	ND	8/2/2022	ND	8/2/2022	0.0043 _{J,B}	8/2/2022	ND	8/2/2022	ND	8/2/2022	ND	8/2/2022	ND	8/2/2022	ND	8/2/2022	

Notes:
 Flow reported as gpm is a daily average calculated from the totalizer reading.
 ND = Not detected above laboratory method detection limit (Cr(TR)=2.5 ug/L; Cr(VI) =0.20 ug/L).
 B = Compound was found in the blank and sample.
 J = Result is less than the reporting limit but greater than or equal to the method detection limit and the concentration is an approximate value.
 1: Analytical results are reported from Eurofins TestAmerica.
 2: On 08/22, 08/25, and 08/26, SWF offline due to maintenance.
 3: Duplicates taken on 08/02 for well PC-118; average of both values is presented and used for calculations.
 4: A "<" preceding the water elevation indicates the reported water level is below the transducer. Average monthly water elevation calculations include the transducer elevation in instances where the water level is below the transducer.

Nevada Environmental Response Trust Groundwater Extraction and Treatment System Enhanced Operational Metrics																	
Date	LS #3 Flow (gpm)	ART-1/1A		ART-2/2A		ART-3/3A		ART-4/4A		ART-9		ART-7A/7B		ART-8/8A		PC-150	
		Flow (gpm)	Water Elevation (ft amsl)	Flow (gpm)	Water Elevation (ft amsl)	Flow (gpm)	Water Elevation (ft amsl)	Flow ² (gpm)	Water Elevation (ft amsl)	Flow (gpm)	Water Elevation (ft amsl)	Flow ³ (gpm)	Water Elevation (ft amsl)	Flow (gpm)	Water Elevation (ft amsl)	Flow ⁴ (gpm)	Water Elevation (ft amsl)
08/01/22	394	42	1583.96	141	1583.86	21	1582.76	3.6	1578.83	37	1576.66	26	1579.65	172	1581.32	1.5	1578.70
08/02/22	394	42	1583.98	141	1583.87	22	1582.77	3.6	1578.83	36	1576.66	26	1579.57	172	1581.34	1.5	1578.70
08/03/22	394	42	1583.99	141	1583.87	22	1582.78	3.6	1578.83	37	1576.67	26	1579.50	172	1581.34	1.5	1578.70
08/04/22	394	42	1583.99	141	1583.87	22	1582.78	3.6	1578.83	36	1576.68	25	1579.53	173	1581.34	1.5	1578.70
08/05/22	394	42	1584.00	141	1583.88	22	1582.78	3.6	1578.83	36	1576.68	25	1579.57	173	1581.35	1.5	1578.70
08/06/22	394	42	1584.01	141	1583.88	22	1582.79	3.6	1578.84	36	1576.68	26	1579.55	173	1581.35	1.5	1578.70
08/07/22	394	42	1584.01	141	1583.89	22	1582.79	3.6	1578.84	37	1576.68	26	1579.58	173	1581.36	1.5	1578.70
08/08/22	394	42	1584.02	141	1583.89	22	1582.79	3.6	1578.84	36	1576.69	26	1579.56	173	1581.36	1.5	1578.70
08/09/22	394	42	1584.02	141	1583.89	22	1582.79	3.6	1578.84	36	1576.69	25	1579.59	173	1581.36	1.5	1578.70
08/10/22	394	42	1584.02	141	1583.89	22	1582.79	3.6	1578.84	37	1576.69	25	1579.67	173	1581.36	1.5	1578.70
08/11/22	394	42	1584.03	141	1583.89	22	1582.80	3.6	1578.84	37	1576.70	25	1579.63	173	1581.37	1.5	1578.70
08/12/22	394	42	1584.03	141	1583.89	22	1582.79	3.6	1578.84	37	1576.70	25	1579.63	173	1581.37	1.5	1578.70
08/13/22	394	42	1584.03	141	1583.89	22	1582.80	3.6	1578.84	37	1576.69	25	1579.64	173	1581.37	1.5	1578.70
08/14/22	394	42	1584.04	141	1583.90	22	1582.80	3.6	1578.84	37	1576.71	25	1579.58	173	1581.37	1.5	1578.70
08/15/22	394	42	1584.04	141	1583.90	22	1582.81	3.6	1578.84	37	1576.71	25	1579.53	173	1581.38	1.5	1578.70
08/16/22	394	42	1584.05	141	1583.91	22	1582.81	3.6	1578.84	37	1576.70	26	1579.49	173	1581.38	1.5	1578.70
08/17/22	394	42	1584.05	141	1583.91	22	1582.81	3.6	1578.84	37	1576.71	26	1579.52	173	1581.38	1.5	1578.70
08/18/22	394	42	1584.05	141	1583.91	22	1582.81	3.6	1578.84	37	1576.71	26	1579.53	173	1581.38	1.5	1578.70
08/19/22	394	42	1584.05	141	1583.91	22	1582.81	3.6	1578.84	36	1576.72	26	1579.46	173	1581.39	1.5	1578.70
08/20/22	394	42	1584.05	141	1583.91	22	1582.81	3.6	1578.84	37	1576.72	26	1579.47	173	1581.39	1.5	1578.70
08/21/22	394	42	1584.05	141	1583.91	22	1582.81	3.6	1578.84	36	1576.72	26	1579.57	172	1581.39	1.5	1578.70
08/22/22	394	42	1584.06	141	1583.91	22	1582.82	3.6	1578.84	36	1576.71	26	1579.56	172	1581.39	1.5	1578.70
08/23/22	394	42	1584.06	141	1583.91	22	1582.82	3.6	1578.84	37	1576.72	26	1579.45	172	1581.39	1.5	1578.70
08/24/22	386	42	1584.06	141	1583.91	22	1582.81	3.6	1578.84	38	1576.68	21	1582.31	172	1581.39	1.5	1578.70
08/25/22	384	42	1584.05	141	1583.90	22	1582.81	3.6	1578.83	41	1576.64	19	1583.62	173	1581.39	1.5	1578.70
08/26/22	384	42	1584.06	141	1583.91	22	1582.82	3.3	1579.48	42	1576.64	19	1583.59	172	1581.40	1.5	1578.70
08/27/22	385	42	1584.07	141	1583.91	22	1582.82	3.6	1578.83	43	1576.64	19	1583.51	172	1581.40	1.5	1578.70
08/28/22	386	42	1584.06	141	1583.91	22	1582.82	3.6	1578.84	43	1576.67	19	1583.55	172	1581.40	1.5	1578.70
08/29/22	391	42	1584.06	141	1583.91	22	1582.81	3.3	1580.82	43	1576.68	22	1582.45	172	1581.40	1.5	1578.70
08/30/22	399	42	1584.06	141	1583.90	22	1582.81	3.6	1581.25	40	1576.65	27	1579.68	172	1581.40	1.5	1578.70
08/31/22	398	42	1584.06	141	1583.90	22	1582.81	3.6	1578.84	39	1576.67	27	1579.58	172	1581.40	1.5	1578.70
Monthly Average	393	42	1584.03	141	1583.90	22	1582.80	3.6	1579.00	38	1576.69	25	1580.26	173	1581.37	1.5	1578.70
Analytical ¹	Conc (mg/L)	Date	Date	Conc (mg/L)	Date	Conc (mg/L)	Date	Conc (mg/L)	Date	Conc (mg/L)	Date	Conc (mg/L)	Date	Conc (mg/L)	Date	Conc (mg/L)	Date
Perchlorate	22	8/15/2022	6.8	8/15/2022	170	8/15/2022	110	8/15/2022	170	8/15/2022	68	8/15/2022	50	8/15/2022	35	8/15/2022	
Hexavalent Chromium	ND	8/15/2022	0.0033	8/15/2022	0.30	8/15/2022	0.15	8/15/2022	0.60	8/15/2022	0.47	8/15/2022	0.065	8/15/2022	0.042	8/15/2022	
Total Chromium	ND	8/15/2022	ND	8/15/2022	0.27	8/15/2022	0.13	8/15/2022	0.55	8/15/2022	0.44	8/15/2022	0.055	8/15/2022	0.038	8/15/2022	

Notes:
 Flow reported as gpm is a daily average calculated from the totalizer reading.
 ND = Not detected above laboratory method detection limit (ClO₄ = 0.5 ug/L; ClO₃ = 10 ug/L; NO₂-N = 0.055 mg/L; Cr(VI) = 0.25 ug/L).
 ART-1, 2, 3, 4, 7B, and 8 have adjacent recovery wells, both of which can be used for extraction. The pumping well can be chosen manually or automatically, based on operational considerations.
 The wells with transducers are ART-1, -2, -3, -4, -7A, -8, -9, and PC-150
 1: Analytical results are reported from Eurofins TestAmerica.
 2: From 8/26 to 8/31, ART-4 switched to ART-4A.
 3: From 08/24 to 08/29, ART-7A switched to ART-7B.
 4: Conducted periodic bucket tests to confirm flow rates for PC-150. Average flow of 1.5 gpm determined from flow tests is presented for 08/01-08/31 flows and used for calculation purposes. Flow was steady throughout the month but the totalizer showed zero flow
 5: Duplicates taken on 08/15 for well PC-150; average of both values is presented and used for calculations.

Table 3 - Interceptor Well Field (IWF) Operational Metrics

Nevada Environmental Response Trust Groundwater Extraction and Treatment System Enhanced Operational Metrics																				
Date	I-AR		I-AA		I-AB		I-AC		I-AD		I-B		I-C		I-D		I-E		I-F	
	Flow (gpm)	Water Elevation (ft amsl)	Flow (gpm)	Water Elevation (ft amsl)	Flow (gpm)	Water Elevation (ft amsl)	Flow (gpm)	Water Elevation (ft amsl)	Flow ^{2,3} (gpm)	Water Elevation (ft amsl)	Flow (gpm)	Water Elevation (ft amsl)	Flow (gpm)	Water Elevation (ft amsl)	Flow ^{4,5,6,7,8,9,10,11} (gpm)	Water Elevation (ft amsl)	Flow ^{11,12} (gpm)	Water Elevation (ft amsl)	Flow ³ (gpm)	Water Elevation (ft amsl)
08/01/22	0.07	1721.13	0.90	1707.62	0.0	1718.86	0.0	1723.55	0.20	1723.65	0.29	1709.70	2.8	1708.74	0.38	1718.80	1.0	1713.62	3.1	1708.85
08/02/22	0.07	1721.15	0.89	1707.62	0.0	1718.85	0.0	1723.55	0.20	1723.66	0.30	1709.71	2.7	1708.75	0.57	1717.69	0.99	1713.76	3.0	1708.95
08/03/22	0.07	1721.10	0.89	1707.62	0.0	1718.81	0.0	1723.55	0.65	1720.60	0.29	1709.72	2.7	1708.75	0.84	1715.17	0.97	1713.85	2.9	1708.95
08/04/22	0.06	1721.17	0.89	1707.62	0.0	1718.79	0.0	1723.52	0.90	1718.71	0.30	1709.71	2.6	1708.74	0.77	1716.00	0.97	1713.87	2.9	1708.94
08/05/22	0.06	1721.32	0.89	1707.62	0.0	1718.81	0.0	1723.52	0.88	1718.89	0.32	1709.69	2.8	1708.74	0.74	1716.36	0.97	1713.90	2.9	1708.95
08/06/22	0.06	1721.42	0.89	1707.62	0.0	1718.84	0.0	1723.49	0.86	1719.10	0.31	1709.70	2.7	1708.74	0.73	1716.41	0.97	1713.90	2.8	1708.96
08/07/22	0.06	1721.45	0.89	1707.62	0.00	1718.86	0.0	1723.46	0.84	1719.30	0.33	1709.71	2.6	1708.74	0.67	1716.92	0.96	1713.94	2.8	1708.96
08/08/22	0.05	1721.54	0.89	1707.63	0.0	1718.88	0.0	1723.45	0.8	1719.30	0.35	1709.72	2.6	1708.74	0.81	1715.00	0.95	1714.03	2.7	1708.98
08/09/22	0.06	1721.74	0.89	1707.62	0.3	1712.92	0.0	1723.44	0.83	1719.38	0.34	1709.76	2.6	1708.75	0.81	1712.63	0.92	1714.26	2.6	1708.99
08/10/22	0.06	1721.28	0.88	1707.62	0.4	1710.28	0.0	1723.44	0.81	1719.55	0.31	1709.77	2.7	1708.75	0.74	1711.97	0.91	1714.39	2.7	1708.99
08/11/22	0.06	1721.50	0.88	1707.62	0.4	1710.20	0.1	1714.57	0.79	1719.72	0.29	1709.76	2.7	1708.75	0.84	1710.31	0.89	1714.40	2.6	1709.01
08/12/22	0.06	1721.80	0.89	1707.62	0.1	1716.14	0.1	1710.00	0.78	1719.84	0.29	1709.74	2.8	1708.75	0.92	1709.12	0.89	1714.40	2.5	1709.01
08/13/22	0.06	1721.68	0.89	1707.62	0.0	1718.87	0.1	1710.00	0.76	1719.97	0.29	1709.73	2.8	1708.75	0.86	1710.31	1.0	1711.91	2.5	1709.01
08/14/22	0.05	1721.73	0.89	1707.63	0.0	1718.73	0.1	1710.00	0.76	1720.01	0.28	1709.74	2.7	1708.75	0.71	1712.27	1.1	1711.82	2.5	1709.01
08/15/22	0.18	1717.20	0.89	1707.63	0.0	1718.82	0.1	1710.00	0.76	1720.01	0.28	1709.74	2.7	1708.75	0.59	1713.34	1.1	1712.51	2.5	1709.01
08/16/22	0.18	1714.96	0.89	1707.63	0.0	1718.81	0.1	1710.00	0.74	1720.11	0.30	1709.74	2.7	1708.75	0.77	1711.13	1.0	1712.89	2.5	1709.02
08/17/22	0.18	1714.96	0.89	1707.64	0.0	1718.80	0.1	1710.00	0.73	1720.21	0.29	1709.74	2.6	1708.75	0.80	1711.22	1.0	1713.10	2.4	1709.02
08/18/22	0.18	1714.96	0.89	1707.63	0.0	1718.80	0.1	1710.00	0.72	1720.29	0.29	1709.75	2.6	1708.75	0.73	1712.07	1.0	1713.18	2.4	1709.02
08/19/22	0.19	1714.96	0.89	1707.63	0.0	1718.80	0.1	1710.00	0.72	1720.30	0.29	1709.76	2.7	1708.75	0.68	1712.62	1.00	1713.42	2.4	1709.02
08/20/22	0.19	1714.96	0.89	1707.63	0.0	1718.79	0.1	1710.00	0.72	1720.25	0.30	1709.74	2.6	1708.75	0.65	1712.86	0.99	1713.52	2.4	1709.02
08/21/22	0.19	1714.96	0.89	1707.63	0.0	1718.79	0.1	1710.00	0.71	1720.29	0.29	1709.71	2.6	1708.75	0.74	1711.42	0.98	1713.61	2.5	1709.01
08/22/22	0.19	1714.96	0.89	1707.64	0.0	1718.76	0.1	1710.00	0.67	1720.58	0.33	1709.75	2.6	1708.75	0.94	1708.16	0.98	1713.70	2.5	1709.01
08/23/22	0.19	1714.96	0.89	1707.64	0.0	1718.75	0.1	1710.00	0.66	1720.70	0.33	1709.73	2.6	1708.75	0.77	1711.36	0.98	1713.74	2.6	1708.99
08/24/22	0.19	1714.96	0.89	1707.64	0.0	1718.74	0.1	1710.00	0.65	1720.73	0.33	1709.71	2.5	1708.75	0.63	1712.90	0.98	1713.80	2.7	1708.98
08/25/22	0.19	1714.95	0.88	1707.64	0.0	1718.72	0.08	1712.37	0.72	1720.21	0.33	1709.72	2.7	1708.75	0.54	1713.59	0.96	1713.89	2.7	1708.96
08/26/22	0.19	1714.95	0.88	1707.64	0.0	1718.72	0.0	1723.17	0.81	1719.42	0.32	1709.72	2.6	1708.75	0.56	1713.46	0.97	1713.99	2.8	1708.94
08/27/22	0.19	1714.96	0.88	1707.64	0.0	1718.68	0.0	1723.38	0.80	1719.61	0.32	1709.73	2.6	1708.75	0.73	1712.19	0.96	1714.07	2.9	1708.91
08/28/22	0.19	1714.96	0.88	1707.64	0.0	1718.68	0.0	1723.40	0.78	1719.71	0.32	1709.73	2.6	1708.75	0.61	1713.23	0.96	1714.12	3.0	1708.89
08/29/22	0.19	1714.96	0.88	1707.64	0.0	1718.67	0.0	1723.40	0.77	1719.85	0.31	1709.73	2.6	1708.75	0.55	1713.71	0.95	1714.18	3.0	1708.80
08/30/22	0.19	1714.96	0.88	1707.64	0.0	1718.67	0.0	1723.40	0.75	1719.99	0.31	1709.73	2.6	1708.75	0.64	1712.78	1.0	1712.60	3.1	1708.77
08/31/22	0.19	1714.96	0.88	1707.64	0.0	1718.67	0.0	1723.42	0.74	1720.10	0.31	1709.74	2.6	1708.75	0.82	1711.34	1.1	1708.54	2.9	1708.92
Monthly Average	0.13	1717.95	0.89	1707.63	0.04	1717.95	0.06	1717.16	0.73	1720.13	0.31	1709.73	2.7	1708.75	0.71	1713.11	0.99	1713.45	2.7	1708.96
Analytical ¹	Conc (mg/L)	Date	Conc (mg/L)	Date	Conc (mg/L)	Date	Conc (mg/L)	Date	Conc (mg/L)	Date	Conc (mg/L)	Date	Conc (mg/L)	Date	Conc (mg/L)	Date	Conc (mg/L)	Date	Conc (mg/L)	Date
Perchlorate	340	8/9/2022	25	8/9/2022	57	8/9/2022	170	8/11/2022	180	8/11/2022	260	8/9/2022	430	8/9/2022	380	8/9/2022	340	8/9/2022	510	8/9/2022
Hexavalent Chromium	0.59	8/9/2022	0.054	8/9/2022	ND	8/9/2022	1.8	8/11/2022	1.8	8/11/2022	0.16	8/9/2022	2.7	8/9/2022	4.3	8/9/2022	5.7	8/9/2022	12	8/9/2022
Total Chromium	5.7	8/9/2022	0.052	8/9/2022	0.019	8/9/2022	1.7	8/11/2022	1.8	8/11/2022	0.16	8/9/2022	2.6	8/9/2022	4.1	8/9/2022	5.6	8/9/2022	11	8/9/2022

Notes:
 Flow reported as gpm is a daily average calculated from the totalizer reading.
 ND = Not detected above laboratory method detection limit (ClO₂ = 0.5 ug/L; ClO₃ = 10 ug/L; NO₃-N= 0.055 mg/L; Cr(VI) = 0.25 ug/L).
 1: Analytical results are reported from Eurofins TestAmerica.
 2: On 08/03, I-AD and I-K adjusted to meet flow targets as directed by the Trust.
 3: On 08/25, I-AD, I-F, I-J, and I-K adjusted to meet flow targets as directed by the Trust.
 4: On 08/02, I-D and I-R adjusted to meet flow targets as directed by the Trust.
 5: On 08/08, I-D, I-H, I-N, and I-X adjusted to meet flow targets as directed by the Trust.
 6: On 08/11, I-D, I-H, I-O, and I-R adjusted to meet flow targets as directed by the Trust.
 7: On 08/16, I-D and I-H adjusted to meet flow targets as directed by the Trust.
 8: On 08/21, I-D, I-N, and I-R adjusted to meet flow targets as directed by the Trust.
 9: On 08/22, I-D and I-N adjusted to meet flow targets as directed by the Trust.
 10: On 08/26, I-D and I-R adjusted to meet flow targets as directed by the Trust.
 11: On 08/30, I-D, I-E, I-N, I-R, and I-X adjusted to meet flow targets as directed by the Trust.
 12: On 08/13, I-E, I-O, and I-S adjusted to meet flow targets as directed by the Trust.

Nevada Environmental Response Trust Groundwater Extraction and Treatment System Enhanced Operational Metrics																				
Date	I-G		I-H		I-I		I-J		I-K		I-L		I-M		I-N		I-O		I-P	
	Flow (gpm)	Water Elevation (ft amsl)	Flow (gpm)	Water Elevation (ft amsl)	Flow (gpm)	Water Elevation (ft amsl)	Flow (gpm)	Water Elevation (ft amsl)	Flow (gpm)	Water Elevation (ft amsl)	Flow (gpm)	Water Elevation (ft amsl)	Flow (gpm)	Water Elevation (ft amsl)	Flow (gpm)	Water Elevation (ft amsl)	Flow (gpm)	Water Elevation (ft amsl)	Flow (gpm)	Water Elevation (ft amsl)
08/01/22	0.23	1711.24	0.67	1717.83	3.1	1721.25	5.8	1712.13	2.5	1715.16	1.0	< 1714.01	2.0	1716.71	1.8	1716.42	0.64	1720.56	1.9	1719.17
08/02/22	0.23	1711.24	0.63	1717.78	3.0	1721.24	5.8	1712.13	2.5	1715.10	1.0	< 1714.01	2.0	1716.74	1.7	1716.19	0.58	1720.56	1.9	1719.22
08/03/22	0.23	1711.24	0.64	1717.75	3.0	1721.24	5.7	1712.13	2.5	1714.70	1.1	< 1714.01	2.0	1716.71	1.7	1716.17	0.56	1720.57	1.8	1719.23
08/04/22	0.23	1711.24	0.68	1717.89	2.9	1721.23	5.7	1712.13	2.6	1714.06	1.1	< 1714.01	2.0	1716.67	1.7	1716.05	0.58	1720.57	1.8	1719.24
08/05/22	0.23	1711.24	0.65	1717.96	3.1	1721.23	5.7	1712.14	2.6	1714.15	1.1	< 1714.01	2.0	1716.62	1.7	1715.98	0.60	1720.57	1.8	1719.24
08/06/22	0.23	1711.24	0.61	1718.08	3.0	1721.22	5.7	1712.15	2.6	1714.08	1.1	< 1714.01	2.0	1716.60	1.7	1715.98	0.54	1720.58	1.8	1719.24
08/07/22	0.23	1711.24	0.59	1718.14	2.9	1721.22	5.7	1712.15	2.6	1713.98	1.1	< 1714.01	2.0	1716.60	1.6	1716.02	0.56	1720.58	1.8	1719.25
08/08/22	0.23	1711.24	0.70	1712.73	3.0	1721.22	5.7	1712.15	2.6	1714.01	1.1	< 1714.01	1.9	1716.68	1.6	1716.03	0.56	1720.59	1.8	1719.25
08/09/22	0.23	1711.24	0.70	1713.06	3.0	1721.21	5.7	1712.15	2.6	1714.10	1.1	< 1714.01	1.9	1716.68	1.3	1716.78	0.56	1720.58	1.8	1719.23
08/10/22	0.23	1711.24	0.62	1716.54	3.0	1721.20	5.7	1712.15	2.6	1714.02	1.1	< 1714.01	1.9	1716.70	1.9	1714.65	0.57	1720.57	1.8	1719.19
08/11/22	0.23	1711.24	0.69	1713.17	3.1	1721.20	5.7	1712.26	2.5	1714.34	1.1	< 1714.01	1.9	1716.80	1.9	1714.18	0.54	1720.56	1.9	1719.13
08/12/22	0.23	1711.24	0.69	1712.85	3.0	1721.19	5.7	1712.13	2.5	1714.60	1.1	< 1714.01	1.9	1716.83	1.9	1714.31	0.49	1720.55	1.9	1719.09
08/13/22	0.23	1711.24	0.66	1716.95	3.2	1721.18	5.7	1712.12	2.5	1714.59	1.1	< 1714.01	1.9	1716.82	1.8	1714.29	0.71	1720.49	1.8	1719.08
08/14/22	0.23	1711.24	0.62	1717.67	3.0	1721.18	5.7	1712.12	2.6	1714.32	1.1	< 1714.01	1.9	1716.80	1.8	1714.18	0.67	1720.46	1.9	1719.04
08/15/22	0.23	1711.24	0.63	1717.80	3.1	1721.17	5.7	1712.12	2.6	1714.29	1.1	< 1714.01	1.9	1716.81	1.8	1714.08	0.64	1720.47	1.9	1719.01
08/16/22	0.23	1711.24	0.63	1713.24	3.1	1721.17	5.7	1712.12	2.5	1714.36	1.1	< 1714.01	1.9	1716.83	1.8	1713.97	0.63	1720.48	1.9	1719.00
08/17/22	0.23	1711.24	0.70	1709.36	2.9	1721.16	5.7	1712.12	2.5	1714.41	1.1	< 1714.01	1.9	1716.79	1.8	1714.09	0.57	1720.49	1.8	1719.00
08/18/22	0.22	1711.24	0.73	1709.35	2.9	1721.16	5.7	1712.12	2.5	1714.70	1.0	< 1714.01	1.9	1716.78	1.8	1714.19	0.56	1720.49	1.8	1718.98
08/19/22	0.22	1711.24	0.72	1709.48	2.9	1721.16	5.7	1712.12	2.5	1714.84	1.1	< 1714.01	1.9	1716.79	1.7	1714.43	0.55	1720.49	1.8	1718.97
08/20/22	0.22	1711.24	0.70	1711.59	2.9	1721.15	5.7	1712.12	2.4	1714.97	1.1	< 1714.01	1.9	1716.78	1.7	1714.78	0.53	1720.49	1.8	1718.96
08/21/22	0.22	1711.24	0.68	1713.83	3.0	1721.14	5.7	1712.12	2.4	1715.06	1.0	< 1714.01	1.9	1716.79	1.6	1715.24	0.55	1720.49	1.8	1718.95
08/22/22	0.22	1711.24	0.65	1714.53	3.0	1721.14	5.7	1712.12	2.3	1715.39	1.0	< 1714.01	1.9	1716.76	1.1	1716.88	0.53	1720.49	1.8	1718.96
08/23/22	0.22	1711.24	0.63	1715.46	2.9	1721.15	5.7	1712.12	2.3	1715.44	1.0	< 1714.01	1.9	1716.76	1.2	1716.97	0.50	1720.50	1.8	1718.97
08/24/22	0.22	1711.24	0.62	1716.99	2.9	1721.14	5.7	1712.12	2.3	1715.49	1.0	< 1714.01	1.9	1716.78	1.1	1717.22	0.52	1720.49	1.8	1718.97
08/25/22	0.22	1711.24	0.59	1717.62	3.0	1721.13	5.6	1712.32	2.6	1713.11	1.0	< 1714.01	1.9	1716.82	1.0	1717.44	0.55	1720.49	1.8	1718.97
08/26/22	0.22	1711.24	0.60	1717.82	3.0	1721.14	5.4	1713.27	3.1	1708.50	1.0	< 1714.01	1.9	1716.87	0.93	1717.62	0.49	1720.50	1.8	1719.00
08/27/22	0.22	1711.24	0.57	1718.10	3.0	1721.15	5.3	1713.81	3.1	1708.62	1.0	< 1714.01	1.9	1716.88	0.87	1717.74	0.52	1720.51	1.8	1719.01
08/28/22	0.22	1711.24	0.56	1718.20	2.9	1721.15	5.3	1713.77	3.1	1708.45	1.0	< 1714.01	1.9	1716.90	0.82	1717.83	0.54	1720.52	1.8	1719.02
08/29/22	0.22	1711.24	0.60	1718.20	2.9	1721.14	5.3	1713.86	3.1	1708.49	1.0	< 1714.01	1.9	1716.94	0.77	1717.91	0.52	1720.51	1.8	1719.02
08/30/22	0.22	1711.24	0.60	1718.17	2.9	1721.14	5.5	1713.06	3.1	1708.44	0.98	< 1714.01	1.9	1716.97	0.90	1717.84	0.49	1720.51	1.8	1719.03
08/31/22	0.22	1711.24	0.65	1714.98	2.9	1721.14	5.6	1712.27	3.0	1708.42	0.99	< 1714.01	1.5	1717.57	1.2	1717.45	0.53	1720.52	1.9	1718.96
Monthly Average	0.23	1711.24	0.65	1715.58	3.0	1721.18	5.6	1712.37	2.6	1713.36	1.1	< 1714.01	1.9	1716.80	1.5	1715.90	0.56	1720.52	1.8	1719.08
Analytical ¹	Conc (mg/L)	Date	Conc (mg/L)	Date	Conc (mg/L)	Date	Conc (mg/L)	Date	Conc (mg/L)	Date	Conc (mg/L)	Date	Conc (mg/L)	Date	Conc (mg/L)	Date	Conc (mg/L)	Date	Conc (mg/L)	Date
Perchlorate	830	8/9/2022	580	8/11/2022	350	8/11/2022	170	8/11/2022	220	8/11/2022	240	8/9/2022	530	8/9/2022	410	8/9/2022	470	8/11/2022	530	8/11/2022
Hexavalent Chromium	18	8/9/2022	12	8/11/2022	6.5	8/11/2022	3.4	8/11/2022	2.5	8/11/2022	1.4	8/9/2022	4.6	8/9/2022	6.7	8/9/2022	8.7	8/11/2022	10	8/11/2022
Total Chromium	20	8/9/2022	12	8/11/2022	6.4	8/11/2022	3.4	8/11/2022	2.4	8/11/2022	1.3	8/9/2022	5.1	8/9/2022	6.9	8/9/2022	8.5	8/11/2022	10	8/11/2022

Notes:
 Flow reported as gpm is a daily average calculated from the totalizer reading.
 1: Analytical results are reported from Eurofins TestAmerica.
 2: On 08/03, I-AD and I-K adjusted to meet flow targets as directed by the Trust.
 3: On 08/25, I-AD, I-F, I-J, and I-K adjusted to meet flow targets as directed by the Trust.
 5: On 08/08, I-D, I-H, I-N, and I-X adjusted to meet flow targets as directed by the Trust.
 6: On 08/11, I-D, I-H, I-O, and I-R adjusted to meet flow targets as directed by the Trust.
 7: On 08/16, I-D and I-H adjusted to meet flow targets as directed by the Trust.
 8: On 08/21, I-D, I-N, and I-R adjusted to meet flow targets as directed by the Trust.
 9: On 08/22, I-D and I-N adjusted to meet flow targets as directed by the Trust.
 11: On 08/30, I-D, I-E, I-N, I-R, and I-X adjusted to meet flow targets as directed by the Trust.
 12: On 08/13, I-E, I-O, and I-S, adjusted to meet flow targets as directed by the Trust.
 13: On 08/23 and 08/28, I-H adjusted to meet flow targets as directed by the Trust.

Nevada Environmental Response Trust Groundwater Extraction and Treatment System Enhanced Operational Metrics																				
Date	I-Q		I-R		I-S		I-T		I-U		I-V		I-W		I-X		I-Y		I-Z	
	Flow (gpm)	Water Elevation (ft amsl)	Flow ^{4,6,8,10} (gpm)	Water Elevation (ft amsl)	Flow ¹² (gpm)	Water Elevation (ft amsl)	Flow (gpm)	Water Elevation (ft amsl)	Flow (gpm)	Water Elevation (ft amsl)	Flow (gpm)	Water Elevation (ft amsl)	Flow (gpm)	Water Elevation (ft amsl)	Flow ^{5,11} (gpm)	Water Elevation (ft amsl)	Flow ¹⁵ (gpm)	Water Elevation (ft amsl)	Flow ¹⁵ (gpm)	Water Elevation (ft amsl)
08/01/22	0.33	1714.52	0.90	1719.17	1.4	1711.04	0.72	1707.51	0.76	1707.63	4.4	1718.39	0.77	1710.00	2.7	1712.24	1.3	1699.89	6.7	1710.19
08/02/22	0.32	1714.59	0.86	1719.51	1.4	1711.09	0.72	1707.51	0.76	1707.63	4.4	1718.37	0.76	1710.00	2.6	1712.28	1.3	1699.89	6.7	1710.19
08/03/22	0.32	1714.57	1.0	1717.82	1.4	1711.12	0.72	1707.51	0.77	1707.63	4.3	1718.36	0.76	1710.01	2.6	1712.40	1.3	1699.89	6.4	1710.19
08/04/22	0.32	1714.53	0.91	1718.42	1.4	1711.08	0.72	1707.51	0.77	1707.62	4.3	1718.34	0.75	1710.01	2.6	1712.48	1.3	1699.89	6.3	1710.19
08/05/22	0.31	1714.54	0.80	1719.25	1.4	1711.05	0.71	1707.51	0.76	1707.62	4.4	1718.33	0.75	1710.01	2.6	1712.02	1.3	1699.89	6.6	1710.19
08/06/22	0.32	1714.53	0.73	1719.79	1.4	1710.99	0.71	1707.51	0.77	1707.62	4.4	1718.32	0.75	1710.09	2.6	1711.83	1.3	1699.89	6.5	1710.19
08/07/22	0.32	1714.53	0.65	1720.27	1.4	1710.98	0.71	1707.51	0.77	1707.62	4.3	1718.30	0.75	1710.13	2.6	1711.84	1.3	1699.89	6.4	1710.19
08/08/22	0.31	1714.63	0.52	1720.95	1.5	1709.90	0.71	1707.51	0.80	1707.62	4.3	1718.30	0.75	1710.27	2.9	1704.30	1.3	1699.89	6.2	1710.19
08/09/22	0.32	1714.58	0.31	1719.00	1.4	1710.41	0.71	1707.51	0.76	1707.62	4.3	1718.27	0.75	1710.14	2.9	1703.80	1.3	1699.89	6.1	1710.19
08/10/22	0.34	1714.52	0.26	1718.02	1.4	1711.26	0.71	1707.51	0.77	1707.62	4.3	1718.24	0.75	1710.02	2.8	1706.68	1.3	1699.89	6.5	1710.19
08/11/22	0.33	1714.53	0.48	1716.94	1.4	1711.66	0.71	1707.51	0.75	1707.62	4.3	1718.23	0.77	1710.02	2.8	1705.73	1.3	1699.92	6.6	1710.12
08/12/22	0.32	1714.52	0.66	1716.38	1.3	1711.76	0.71	1707.51	0.77	1707.62	4.3	1718.21	0.76	1710.02	2.8	1705.13	1.3	1699.92	6.6	1710.12
08/13/22	0.32	1714.52	0.8	1715.52	1.5	1709.05	0.71	1707.51	0.75	1707.62	4.3	1718.17	0.76	1710.02	2.8	1704.54	1.3	1699.92	6.6	1710.12
08/14/22	0.31	1714.53	0.87	1715.00	1.6	1706.67	0.71	1707.51	0.76	1707.62	4.3	1718.14	0.76	1710.02	2.8	1704.00	1.3	1699.92	6.6	1710.12
08/15/22	0.31	1714.53	0.86	1715.09	1.6	1706.67	0.71	1707.51	0.76	1707.62	4.3	1718.11	0.76	1710.02	2.8	1705.38	1.3	1699.92	6.6	1710.12
08/16/22	0.31	1714.53	0.89	1714.73	1.6	1706.66	0.71	1707.51	0.76	1707.62	4.3	1718.10	0.76	1710.02	2.8	1705.08	1.3	1699.92	6.5	1710.12
08/17/22	0.30	1714.55	0.83	1714.88	1.6	1706.65	0.71	1707.51	0.76	1707.62	4.3	1718.08	0.76	1710.02	2.9	1701.58	1.3	1699.92	6.2	1710.12
08/18/22	0.30	1714.56	0.77	1715.05	1.6	1706.65	0.71	1707.51	0.75	1707.62	4.3	1718.06	0.75	1710.02	2.8	1702.78	1.3	1699.88	5.9	1710.06
08/19/22	0.30	1714.57	0.76	1714.96	1.6	1706.65	0.71	1707.51	0.75	1707.62	4.3	1718.05	0.75	1710.02	2.8	1704.09	1.3	1705.00	6.1	1710.06
08/20/22	0.30	1714.57	0.75	1715.04	1.6	1706.64	0.70	1707.51	0.75	1707.62	4.3	1718.03	0.75	1710.02	2.8	1704.91	1.3	1705.00	6.2	1710.06
08/21/22	0.30	1714.58	0.82	1714.78	1.6	1706.64	0.70	1707.51	0.75	1707.62	4.3	1718.01	0.75	1710.02	2.8	1705.11	1.3	1705.00	6.0	1710.06
08/22/22	0.29	1714.65	0.94	1713.61	1.6	1706.65	0.70	1707.51	0.75	1707.62	4.3	1718.00	0.72	1710.41	2.8	1706.42	1.2	1705.00	5.7	1710.06
08/23/22	0.29	1714.70	0.88	1713.79	1.6	1706.65	0.70	1707.51	0.76	1707.63	4.3	1718.01	0.71	1711.22	2.8	1707.45	1.2	1705.00	5.6	1710.06
08/24/22	0.29	1714.75	0.91	1713.29	1.6	1706.66	0.70	1707.51	0.75	1707.63	4.3	1717.98	0.72	1710.16	2.8	1708.42	1.2	1705.00	5.5	1710.00
08/25/22	0.29	1714.75	0.93	1712.99	1.6	1706.67	0.70	1707.51	0.76	1707.62	4.3	1717.97	0.67	1713.30	2.8	1709.50	1.2	1705.00	5.9	1710.00
08/26/22	0.28	1714.80	0.96	1712.56	1.6	1706.74	0.70	1707.51	0.74	1707.62	4.3	1717.99	0.66	1714.82	2.7	1711.08	1.2	1705.00	6.0	1710.00
08/27/22	0.28	1714.82	1.1	1709.91	1.6	1706.79	0.70	1707.51	0.75	1707.62	4.3	1718.02	0.66	1714.49	2.7	1711.70	1.2	1705.00	6.0	1710.00
08/28/22	0.28	1714.85	1.0	1710.50	1.6	1706.79	0.70	1707.52	0.76	1707.63	4.3	1718.02	0.64	1716.04	2.7	1712.00	1.2	1705.00	6.0	1710.00
08/29/22	0.28	1714.91	1.0	1710.58	1.5	1706.89	0.70	1707.51	0.76	1707.63	4.3	1717.98	0.66	1714.95	2.7	1712.24	1.2	1705.00	5.8	1710.00
08/30/22	0.27	1714.94	1.0	1710.03	1.5	1707.06	0.70	1707.51	0.76	1707.63	4.3	1717.98	0.65	1715.28	2.8	1709.97	1.2	1705.00	5.6	1710.00
08/31/22	0.27	1714.96	1.0	1710.35	1.5	1707.53	0.70	1707.51	0.76	1707.62	4.3	1717.99	0.64	1716.14	3.0	1703.85	1.2	1705.00	5.7	1710.00
Monthly Average	0.30	1714.63	0.82	1715.43	1.5	1708.49	0.71	1707.51	0.76	1707.62	4.3	1718.14	0.73	1711.22	2.8	1707.77	1.3	1702.04	6.2	1710.10
Analytical ¹	Conc (mg/L)	Date	Conc (mg/L)	Date	Conc (mg/L)	Date	Conc ¹⁴ (mg/L)	Date	Conc (mg/L)	Date	Conc (mg/L)	Date	Conc (mg/L)	Date	Conc (mg/L)	Date	Conc (mg/L)	Date	Conc (mg/L)	Date
Perchlorate	550	8/9/2022	510	8/9/2022	310	8/9/2022	730	8/9/2022	760	8/9/2022	460	8/11/2022	540	8/11/2022	560	8/9/2022	360	8/9/2022	170	8/11/2022
Hexavalent Chromium	14	8/9/2022	0.91	8/9/2022	1.6	8/9/2022	16	8/9/2022	12	8/9/2022	6.8	8/11/2022	8.9	8/11/2022	9.7	8/9/2022	1.3	8/9/2022	4.5	8/11/2022
Total Chromium	13	8/9/2022	0.83	8/9/2022	1.6	8/9/2022	15	8/9/2022	15	8/9/2022	6.5	8/11/2022	9.7	8/11/2022	9.4	8/9/2022	1.2	8/9/2022	5.1	8/11/2022

Notes:
 1: Analytical results are reported from Eurofins TestAmerica.
 4: On 08/02, I-D and I-R adjusted to meet flow targets as directed by the Trust.
 5: On 08/08, I-D, I-H, I-N, and I-X adjusted to meet flow targets as directed by the Trust.
 6: On 08/11, I-D, I-H, I-O, and I-R adjusted to meet flow targets as directed by the Trust.
 8: On 08/21, I-D, I-N, and I-R adjusted to meet flow targets as directed by the Trust.
 10: On 08/26, I-D and I-R adjusted to meet flow targets as directed by the Trust.
 11: On 08/30, I-D, I-E, I-N, I-R, and I-X adjusted to meet flow targets as directed by the Trust.
 12: On 08/13, I-E, I-O, and I-S, adjusted to meet flow targets as directed by the Trust.
 14: Duplicates taken on 08/09 for well I-T; average of both values is presented and used for calculations.
 15: On 08/11 and 08/18, I-Y and I-Z water level taken manually due to water level dropping below transducer level.

Nevada Environmental Response Trust Groundwater Extraction and Treatment System Enhanced Operational Metrics																
Date	LS #2	GWTP Effluent ¹				GW-11 Influent ¹				FBR Plant Influent ¹						
	Flow (gpm)	Flow (gpm)	TA - Cr (TR) (mg/L)	TA - Cr (VI) (mg/L)	TA - ClO ₂ (mg/L)	Flow (gpm)	TA - Cr (TR) (mg/L)	TA - Cr (VI) (mg/L)	TA - ClO ₂ (mg/L)	Flow (gpm)	TA - ClO ₂ (mg/L)	ETI - ClO ₂ (mg/L)	TA - ClO ₂ (mg/L)	TA - NO ₂ - N (mg/L)	TA - Cr (TR) (mg/L)	TA - Cr (VI) (mg/L)
08/01/22	850	62				0.0				912		69				
08/02/22	850	63				0.0				913		55				
08/03/22	852	62	0.37	ND	400	0.0				915		55				
08/04/22	850	63				0.0				912		57				
08/05/22	851	62				0.0				913		56				
08/06/22	848	63				0.0				911	43	59				
08/07/22	848	61				0.0				909		59				
08/08/22	849	62				0.0				911		63	120	11	0.58	0.030
08/09/22	848	61				0.0				909		46				
08/10/22	849	62	1.4	ND	360	0.0				911		61				
08/11/22	847	63				1.0	0.54	0.055	40	909		63				
08/12/22	847	62				0.0				909		56				
08/13/22	847	63				0.0				910	52	59				
08/14/22	847	62				0.0				909		60				
08/15/22	763	62				0.0				981		59				
08/16/22	847	62				0.0				909		61		11	0.091	ND
08/17/22	847	58	0.092	ND	420	0.0				905		54				
08/18/22	846	63				0.0				909		63				
08/19/22	846	62				0.0				908		49				
08/20/22	858	61				0.0				919	46	57				
08/21/22	846	60				0.0				906		57				
08/22/22	818	62				0.0				917		57		11	0.13	0.056
08/23/22	847	61				0.0				908		56				
08/24/22	839	62	0.22	ND	390	0.0				901		56				
08/25/22	807	61				0.0				893		49				
08/26/22	830	61				0.0				903		57				
08/27/22	837	61				0.0				898	58	60				
08/28/22	837	61				0.0				899		57				
08/29/22	843	61				0.0				904		61		11	0.072	0.052
08/30/22	850	61				0.0				911		54				
08/31/22	850	61	0.15	0.00058	400	0.0				910		57				
Monthly Average ²	842	62	0.51	0.000074	392	0.034	0.54	0.055	40	911	50	57	120	11	0.27	0.031

Notes:
 Flow reported as gpm is a daily average calculated from the totalizer reading. The only exceptions are the instantaneous flow readings recorded for the 1st and 2nd Stage FBR flows.
 ND = Not detected above laboratory method detection limit (ClO₄ = 0.5 ug/L; ClO₃ = 10 ug/L; NO₃-N = 0.055 mg/L; Cr(VI) = 0.25 ug/L).
 1: ETI = Envirogen internal process control data, TA = Eurofins TestAmerica data.
 2: All average concentrations reported are monthly flow weighted averages.

Table 4 - Treatment Plant Operational Metrics

Nevada Environmental Response Trust Groundwater Extraction and Treatment System Enhanced Operational Metrics														
Date	1st Stage FBR ³			2nd Stage FBR ³			FBR Plant Effluent ¹							
	Flow (gpm)	pH (s.u.)	ORP (mV)	Flow (gpm)	pH (s.u.)	ORP (mV)	Flow ⁴ (gpm)	TA - ClO ₂ (mg/L)	ETI - ClO ₄ (mg/L)	TA - ClO ₃ (mg/L)	TA - Cr (TR) (mg/L)	TA - Cr (VI) (mg/L)	TA - NO ₃ - N (mg/L)	ETI - Turbidity (NTU)
08/01/22	958	6.7	-291	865	6.4	-421	915		ND					11
08/02/22	963	6.8	-350	775	6.5	-424	915		ND					10
08/03/22	940	6.8	-329	869	6.5	-429	913		ND					11
08/04/22	956	6.8	-371	721	6.4	-427	826		ND					7.0
08/05/22	957	6.9	-421	821	6.5	-428	909		ND					8.0
08/06/22	950	6.9	-428	734	6.5	-428	912	ND	ND					5.0
08/07/22	932	6.9	-313	652	6.5	-430	799		ND					17
08/08/22	925	6.9	-405	750	6.5	-429	812		ND	0.027 J	0.017	ND	0.070	10
08/09/22	945	6.9	-425	828	6.5	-430	906		ND					17
08/10/22	943	6.9	-438	753	6.5	-430	914		ND					9.0
08/11/22	931	7.0	-445	839	6.5	-432	914		ND					7.0
08/12/22	941	7.0	-446	713	6.5	-429	919		ND					6.0
08/13/22	946	7.0	-444	730	6.5	-428	914	ND	ND					5.0
08/14/22	939	6.8	-365	596	6.4	-353	921		ND					8.0
08/15/22	956	6.8	-395	613	6.5	-397	918		ND					8.0
08/16/22	938	6.8	-346	603	6.5	-423	919		ND		0.0070 J	ND	0.046 J	13
08/17/22	942	6.8	-413	860	6.5	-426	906		ND					11
08/18/22	934	6.8	-424	826	6.5	-424	901		ND					12
08/19/22	943	6.9	-433	637	6.5	-424	898		ND					11
08/20/22	947	6.9	-351	641	6.5	-427	898	0.0017	ND					8.0
08/21/22	918	6.9	-438	692	6.5	-426	891		ND					11
08/22/22	937	6.7	-365	866	6.5	-411	886		ND		0.0090 J	ND	0.072	10
08/23/22	966	6.7	-405	741	6.5	-426	880		ND					5.0
08/24/22	955	6.8	-431	803	6.5	-427	922		ND					7.0
08/25/22	948	6.8	-396	767	6.5	-424	929		ND					7.0
08/26/22	972	6.9	-388	745	6.5	-423	927		ND					7.0
08/27/22	973	6.9	-379	867	6.5	-424	932	ND	ND					8.0
08/28/22	955	6.9	-402	826	6.5	-426	918		ND					17
08/29/22	975	6.7	-219	744	6.5	-419	688		ND		0.0028 J	ND	ND	17
08/30/22	937	6.7	-335	688	6.5	-429	765		ND					11
08/31/22	952	6.8	-390	516	6.5	-429	870		ND					9.0
Monthly Average ²	948	6.8	-386	745	6.5	-423	888	0.00039	ND	0.027	0.010	ND	0.051	10

Notes:

Flow reported as gpm is a daily average calculated from the totalizer reading. The only exceptions are the instantaneous flow readings recorded for the 1st and 2nd Stage FBR flows.

ND = Not detected above laboratory method detection limit (ClO₂ = 0.5 ug/L; ClO₃ = 10 ug/L; NO₃-N= 0.055 mg/L; Cr(VI) = 0.25 ug/L).

J = Result is less than the reporting limit but greater than or equal to the method detection limit and the concentration is an approximate value.

1: ETI = Envirogen internal process control data, TA = Eurofins TestAmerica data.

2: All average concentrations reported are monthly flow weighted averages.

3: For 1st and 2nd stage FBRs, flow measurements are collected from the influent lines and pH and ORP samples are collected from the recycle lines.

4: FBR Plant Effluent represents effluent discharged to Las Vegas Wash. While this may represent the entirety of the FBR Plant effluent, any diversions to GW-11 are subtracted from the original effluent flow.

GW-11 Level Monitoring ¹		
Date	Field Measurement (ft)	Volume (MG)
08/15/22	31.4	34.8
08/31/22	32.1	34.0

GW-11 Leak Detection Monitoring				
Date	Amount Pumped ² (gallons)			
	NW Corner	NE Corner	SW Corner	SE Corner
08/09/22	0.0	0.0	520	0.0
08/24/22	0.0	0.0	538	0.0

GW-11 Composite Sample ³		
Analytes	Concentration	Units
Perchlorate	0.63	mg/L
Chlorate	0.18	mg/L
Ammonia as N	ND	mg/L
Total Phosphorus	3.5	mg/L
Total Dissolved Solids (TDS)	17000D	mg/L
Total Suspended Solids (TSS)	63	mg/L
pH	8.2 HF	s.u.
Calcium	850	mg/L
Iron	0.24	mg/L
Chromium (total)	0.0011	mg/L
Chromium VI	ND	mg/L
Chloride	6,600	mg/L
Nitrate as N	ND	mg/L
Sulfate	5,500	mg/L

Notes:

D = Result was obtained from the analysis of a dilution.

HF = Field parameter with a holding time of 15 minutes. Test performed by laboratory at client's request.

1: A transducer installed along the eastern berm provides water pressure measurements that are correlated to elevations for calculation of water depths.

2: Pumping occurs over three consecutive days. The total amount pumped over the three day period is listed with the last day pumping occurred.

3: GW-11 Corner Composite Sample is collected quarterly, most recent sampling results are presented. Sampled on: August 26, 2022.

Nevada Environmental Response Trust Groundwater Extraction and Treatment System Enhanced Operational Metrics						
Date	Flow ¹ (gpm)	FBR Influent Concentration			Influent Function Load ² (lbs/day)	6 Month Rolling Average (lbs/day)
		ClO ₄ (mg/L)	NO ₃ as N (mg/L)	ClO ₃ (mg/L)		
Sep 2021	954	62	11	130	492	467
Oct 2021	924	66	11	120	464	475
Nov 2021	879	49	10	120	406	473
Dec 2021	934	42	9.6	110	391	471
Jan 2022	992	58	11	120	481	457
Feb 2022	1,050	56	18	110	563	466
Mar 2022	1,022	50	20	110	556	477
Apr 2022	957	59	17	110	509	485
May 2022	944	56	14	110	471	495
June 2022	921	52	12	110	430	502
July 2022	912	50	12	100	402	488
Aug 2022	911	50	11	120	429	466

Notes:

Concentrations and flow are presented as monthly average.

1: Flow used in loading calculation is average monthly FBR influent flow.

2: FBR loading calculated as $[(0.9 \cdot \text{NO}_3 \text{ as N} + 0.17 \cdot \text{ClO}_3 + 0.18 \cdot \text{ClO}_4) \cdot \text{Flow} \cdot 1440 / 1000000 \cdot 8.34]$.

Table 7 - AP Area Operational Metrics

Nevada Environmental Response Trust Groundwater Extraction and Treatment System Enhanced Operational Metrics																
Date	E1-1		E1-2		E1-3		E2-1		E2-2		E2-3		E2-4		E2-5	
	Flow (gpm)	Water Elevation (ft amsl)	Flow (gpm)	Water Elevation (ft amsl)	Flow (gpm)	Water Elevation (ft amsl)	Flow (gpm)	Water Elevation (ft amsl)	Flow (gpm)	Water Elevation (ft amsl)	Flow (gpm)	Water Elevation (ft amsl)	Flow (gpm)	Water Elevation (ft amsl)	Flow (gpm)	Water Elevation (ft amsl)
08/01/22	3.1	1711.31	0.86	1710.74	0.88	1711.44	1.2	1715.68	0.96	1716.81	0.93	1717.41	0.97	1715.65	0.37	1715.31
08/02/22	3.1	1711.16	0.89	1709.74	0.87	1710.47	1.3	1714.34	0.98	1716.77	0.96	1717.20	0.99	1716.59	0.35	1716.32
08/03/22	3.1	1710.59	0.86	1709.72	0.88	1710.09	1.3	1714.17	0.96	1716.11	0.98	1717.37	1.0	1717.18	0.41	1712.97
08/04/22	3.1	1710.51	0.89	1709.63	0.87	1710.02	1.3	1713.92	0.98	1715.79	1.0	1716.95	1.1	1717.30	0.40	1713.31
08/05/22	3.1	1710.53	0.88	1709.85	0.87	1709.87	1.3	1714.20	0.96	1715.54	0.96	1717.34	1.0	1717.21	0.41	1713.27
08/06/22	3.1	1710.57	0.87	1709.76	0.87	1710.06	1.3	1712.64	0.94	1715.47	0.98	1717.40	1.0	1717.17	0.37	1713.32
08/07/22	3.1	1710.87	0.86	1709.97	0.88	1710.12	1.3	1713.20	1.0	1715.62	1.0	1717.00	1.1	1717.30	0.36	1714.12
08/08/22	3.1	1710.86	0.86	1710.25	0.88	1710.10	1.3	1713.57	0.98	1716.22	1.0	1716.84	1.1	1717.37	0.34	1714.41
08/09/22	3.1	1710.58	0.89	1709.89	0.89	1710.45	1.3	1714.50	1.0	1716.67	0.75	1720.05	0.89	1717.31	0.41	1713.91
08/10/22	3.1	1710.82	0.83	1711.71	0.88	1710.68	1.3	1713.14	1.0	1715.37	0.92	1718.01	1.1	1716.81	0.40	1709.40
08/11/22	3.1	1710.52	0.87	1710.94	0.93	1710.62	1.2	1712.76	1.0	1714.87	0.85	1718.40	1.0	1717.15	0.35	1709.44
08/12/22	3.2	1710.15	0.88	1709.56	0.88	1710.47	1.3	1712.40	1.0	1716.54	0.83	1719.23	1.1	1717.45	0.38	1719.97
08/13/22	3.2	1710.11	0.82	1709.59	0.90	1710.40	1.2	1713.50	1.0	1716.47	1.1	1718.95	1.0	1717.39	0.38	1717.90
08/14/22	3.1	1710.45	0.86	1709.51	0.90	1710.53	1.2	1713.45	0.98	1716.52	1.0	1715.93	1.0	1717.36	0.44	1716.97
08/15/22	3.1	1710.43	0.77	1709.65	0.89	1710.36	1.2	1715.60	0.95	1715.82	1.2	1715.55	1.0	1716.64	0.38	1709.81
08/16/22	3.1	1710.71	0.37	1713.90	0.94	1710.35	1.2	1714.83	0.90	1715.16	1.2	1715.38	1.0	1716.91	0.35	1713.87
08/17/22	3.1	1710.93	0.77	1712.09	0.89	1710.28	1.2	1713.96	0.98	1714.75	1.1	1714.94	1.0	1716.58	0.37	1713.44
08/18/22	3.1	1710.99	0.76	1709.71	0.86	1710.34	1.2	1712.40	0.97	1713.80	1.2	1714.23	1.0	1716.69	0.41	1713.17
08/19/22	3.1	1710.85	0.88	1709.76	0.89	1710.27	1.2	1712.32	0.95	1713.82	1.1	1714.25	1.0	1716.80	0.38	1713.22
08/20/22	3.1	1710.71	0.89	1709.95	0.89	1710.47	1.2	1712.39	0.94	1713.87	1.2	1714.30	1.0	1716.71	0.41	1713.16
08/21/22	3.0	1710.98	0.89	1709.74	0.85	1710.37	1.2	1712.40	0.94	1713.98	1.1	1714.41	1.0	1717.29	0.35	1712.18
08/22/22	3.0	1710.95	0.88	1709.91	0.93	1709.90	1.2	1712.82	0.94	1714.42	1.2	1715.05	1.1	1717.11	0.34	1710.21
08/23/22	3.1	1710.93	0.86	1709.73	0.89	1709.64	1.2	1712.77	0.88	1714.49	1.1	1714.92	1.0	1715.89	0.34	1709.67
08/24/22	3.1	1710.81	0.82	1710.82	0.87	1711.67	1.2	1712.61	1.0	1715.76	1.2	1714.65	1.1	1715.34	0.37	1709.73
08/25/22	3.1	1710.73	0.77	1710.97	0.88	1711.63	1.3	1712.67	0.94	1715.87	1.1	1714.53	1.0	1715.44	0.40	1709.61
08/26/22	3.1	1712.38	0.78	1711.86	0.87	1712.70	1.1	1714.29	0.92	1716.68	1.1	1716.74	1.0	1717.18	0.40	1710.14
08/27/22	3.1	1712.35	0.86	1711.78	0.88	1712.58	1.2	1714.36	0.95	1716.73	1.1	1716.10	1.1	1716.47	0.38	1710.27
08/28/22	3.1	1711.96	0.83	1710.68	0.86	1711.99	1.2	1713.73	0.94	1716.58	1.1	1716.44	1.1	1717.00	0.35	1710.07
08/29/22	3.1	1711.92	0.86	1710.83	0.85	1712.12	1.1	1713.21	0.95	1715.92	1.1	1716.08	1.1	1716.32	0.37	1710.62
08/30/22	3.1	1711.98	0.80	1710.75	0.89	1712.03	1.3	1712.84	0.96	1715.43	1.1	1715.85	1.0	1715.99	0.40	1710.99
08/31/22	3.1	1711.56	0.84	1711.02	0.87	1712.00	1.2	1712.79	0.97	1715.17	1.1	1715.86	1.1	1715.82	0.38	1710.62
Monthly Average	3.1	1710.98	0.83	1710.45	0.88	1710.78	1.2	1713.46	0.96	1715.58	1.1	1716.37	1.0	1716.76	0.38	1712.62
Analytical ¹	Conc (mg/L)	Date	Conc (mg/L)	Date	Conc (mg/L)	Date	Conc (mg/L)	Date	Conc (mg/L)	Date	Conc (mg/L)	Date	Conc (mg/L)	Date	Conc (mg/L)	Date
Perchlorate	470	8/10/2022	810	8/10/2022	330	8/10/2022	89	8/10/2022	350	8/10/2022	710	8/10/2022	710	8/10/2022	1,000	8/10/2022
Hexavalent Chromium	0.087	8/10/2022	0.55	8/10/2022	0.65	8/10/2022	0.031	8/10/2022	0.029	8/10/2022	0.083	8/10/2022	0.086	8/10/2022	0.25	8/10/2022
Total Chromium	0.085	8/10/2022	0.51	8/10/2022	0.64	8/10/2022	0.053	8/10/2022	0.026	8/10/2022	0.080	8/10/2022	0.083	8/10/2022	0.25	8/10/2022

Notes:
 Flow reported as gpm is a daily average calculated from the totalizer reading.
 The flow rate at individual wells is adjusted daily to maintain the water level in the wells above the pump.
 1: Analytical results are reported from Eurofins TestAmerica.
 2: Duplicates taken on 08/10 for well E2-1; average of both values is presented and used for calculations.

Figure 1 - GW-11 Pond Volume and FBR Influent Perchlorate Concentration

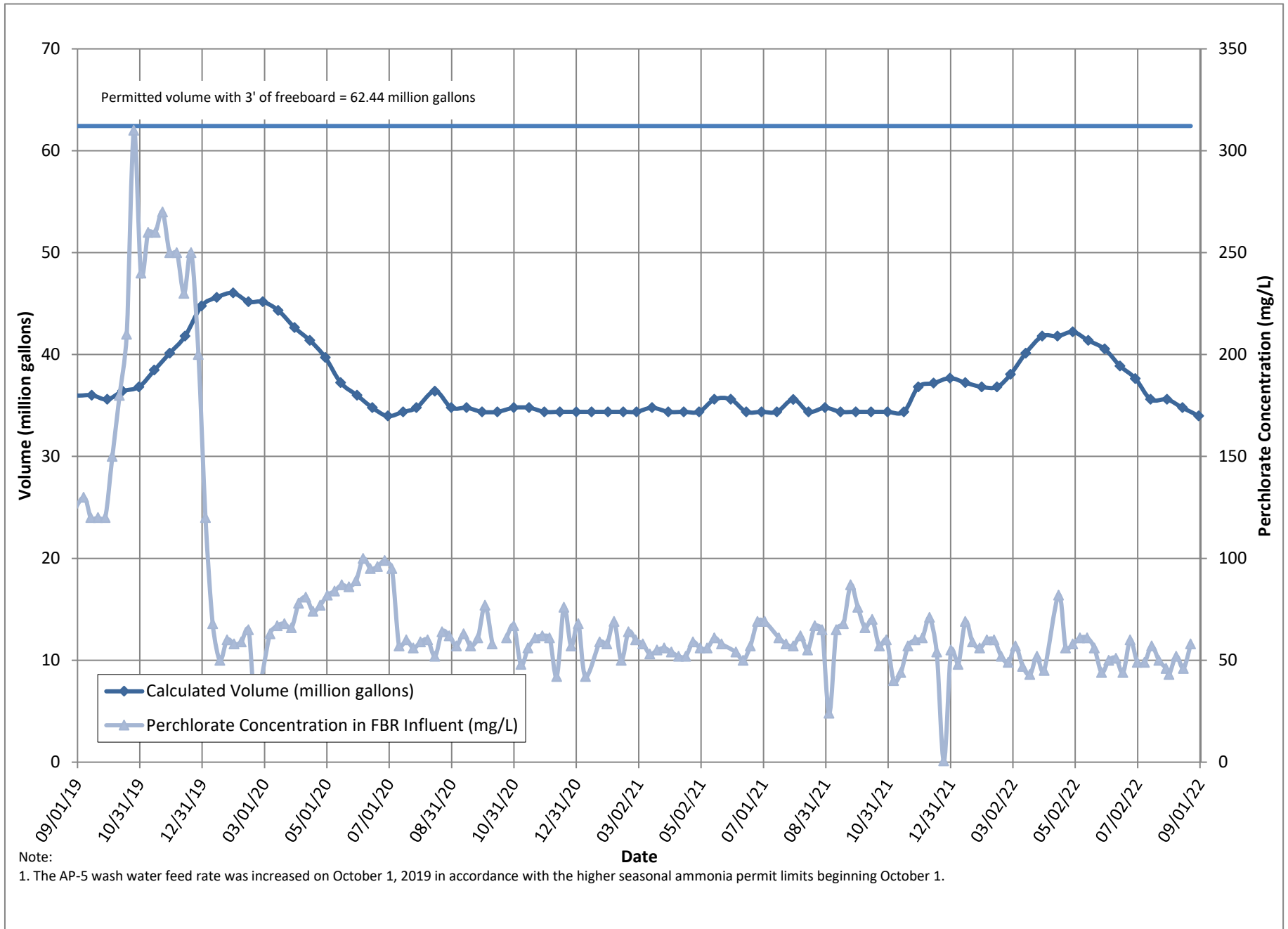


Figure 2 - FBR Equivalent Loading Calculation

