

Table 1 - Seep Well Field (SWF) Operational Metrics

Nevada Environmental Response Trust Groundwater Extraction and Treatment System Enhanced Operational Metrics																			
Date	LS #1 Flow (gpm)	PC-116R (East Well)		PC-99R2/R3 (Center Well)		PC-115R (West Well)		PC-117		PC-118		PC-119		PC-120		PC-121		PC-133	
		Flow (gpm)	Water Elevation (ft amsl)	Flow (gpm)	Water Elevation (ft amsl)	Flow (gpm)	Water Elevation (ft amsl)	Flow (gpm)	Water Elevation (ft amsl)	Flow (gpm)	Water Elevation (ft amsl)	Flow (gpm)	Water Elevation (ft amsl)	Flow (gpm)	Water Elevation (ft amsl)	Flow (gpm)	Water Elevation (ft amsl)	Flow (gpm)	Water Elevation ⁵ (ft amsl)
01/01/21	463	163	1536.20	91	1540.60	130	1542.14	108	1536.44	71	1546.40	103	1547.70	50	1548.84	21	1549.82	9.7	< 1520.00
01/02/21	466	163	1536.18	92	1540.52	130	1542.15	108	1536.43	71	1546.42	102	1547.70	50	1548.85	20	1549.82	9.7	< 1520.00
01/03/21	466	163	1536.18	91	1540.24	130	1542.16	108	1536.42	72	1546.48	102	1547.73	50	1548.87	20	1549.85	9.7	< 1520.00
01/04/21	464	163	1536.19	92	1540.47	131	1542.19	108	1536.44	71	1546.46	103	1547.75	49	1548.90	20	1549.87	9.7	< 1520.00
01/05/21	461	163	1531.65	92	1540.59	130	1542.20	108	1536.43	72	1546.50	102	1547.76	50	1548.91	20	1549.89	9.7	< 1520.00
01/06/21	466	163	1531.69	92	1540.39	130	1542.22	108	1536.45	71	1546.51	103	1547.79	50	1548.94	20	1549.92	9.7	< 1520.00
01/07/21	464	163	1536.22	91	1540.34	130	1542.24	108	1536.45	72	1546.52	102	1547.80	50	1548.96	21	1549.94	9.7	< 1520.00
01/08/21	464	163	1536.24	92	1540.61	130	1542.26	108	1536.47	71	1546.57	102	1547.83	50	1548.98	20	1549.96	9.7	< 1520.00
01/09/21	463	163	1536.27	91	1540.35	129	1542.27	107	1536.46	71	1546.58	102	1547.83	50	1548.99	20	1549.97	9.7	< 1520.00
01/10/21	463	164	1536.26	92	1540.60	131	1542.28	108	1536.47	72	1546.57	103	1547.85	50	1549.00	20	1549.99	9.8	< 1520.00
01/11/21	462	163	1536.27	92	1540.44	130	1542.28	108	1536.46	71	1546.60	103	1547.86	50	1549.02	20	1550.00	9.7	< 1520.00
01/12/21 ²	456	156	1536.47	88	1540.78	125	1542.35	103	1536.61	68	1546.67	98	1547.91	48	1549.06	20	1550.04	9.0	< 1520.00
01/13/21	497	163	1536.41	92	1540.43	131	1542.36	108	1536.59	72	1546.66	103	1547.92	50	1549.07	20	1550.05	10	< 1520.00
01/14/21 ³	468	162	1536.38	91	1540.52	129	1542.35	107	1536.59	71	1546.67	102	1547.92	50	1549.06	20	1550.04	9.7	< 1520.00
01/15/21	442	163	1536.49	92	1540.88	131	1542.39	108	1536.60	72	1546.71	102	1547.94	50	1549.09	21	1550.07	9.7	< 1520.00
01/16/21	445	163	1536.44	93	1540.31	131	1542.37	108	1536.58	72	1546.71	103	1547.94	50	1549.08	20	1550.06	9.7	< 1520.00
01/17/21	455	163	1536.43	92	1540.67	130	1542.38	108	1536.57	71	1546.71	102	1547.95	50	1549.10	20	1550.08	9.7	< 1520.00
01/18/21	455	163	1536.40	92	1540.37	131	1542.39	108	1536.56	72	1546.73	103	1547.94	50	1549.09	20	1550.07	9.7	< 1520.00
01/19/21	461	163	1536.39	93	1540.60	130	1542.38	108	1536.55	71	1546.72	102	1547.93	50	1549.08	21	1550.06	9.7	< 1520.00
01/20/21	465	163	1536.40	92	1540.85	130	1542.37	108	1536.54	72	1546.71	103	1547.93	50	1549.08	20	1550.06	9.7	< 1520.00
01/21/21	466	163	1536.39	93	1540.89	131	1542.38	108	1536.54	72	1546.74	102	1547.94	50	1549.08	20	1550.06	9.7	< 1520.00
01/22/21	467	163	1536.38	93	1540.78	131	1542.37	108	1536.54	72	1546.74	102	1547.93	50	1549.08	20	1550.06	9.7	< 1520.00
01/23/21	466	163	1536.35	93	1540.39	131	1542.36	108	1536.50	71	1546.76	103	1547.92	50	1549.07	21	1550.05	9.7	< 1520.00
01/24/21	461	163	1536.46	93	1540.37	130	1542.38	108	1536.55	71	1546.77	103	1547.93	49	1549.07	20	1550.05	9.0	< 1520.00
01/25/21	463	163	1536.40	92	1540.38	131	1542.37	108	1536.52	72	1546.74	102	1547.92	50	1549.07	20	1550.05	9.7	< 1520.00
01/26/21	460	163	1536.39	93	1540.52	131	1542.35	108	1536.49	71	1546.74	103	1547.89	50	1549.04	20	1550.02	9.7	< 1520.00
01/27/21	462	163	1536.40	93	1540.36	130	1542.36	108	1536.48	71	1546.74	102	1547.90	50	1549.04	20	1550.02	9.6	< 1520.00
01/28/21	462	163	1536.40	93	1540.31	130	1542.36	108	1536.48	71	1546.75	102	1547.91	50	1549.05	20	1550.03	9.6	< 1520.00
01/29/21	463	163	1536.38	93	1540.27	130	1542.36	108	1536.47	71	1546.76	102	1547.91	50	1549.05	20	1550.03	9.5	< 1520.00
01/30/21	468	163	1536.34	93	1540.28	130	1542.34	108	1536.44	71	1546.74	102	1547.88	50	1549.03	20	1550.00	9.5	< 1520.00
01/31/21	474	163	1536.34	93	1540.28	130	1542.34	108	1536.42	71	1546.75	102	1547.88	50	1549.02	20	1550.00	9.6	< 1520.00
Monthly Average	463	163	1536.04	92	1540.50	130	1542.31	108	1536.50	71	1546.65	102	1547.87	50	1549.02	20	1550.00	9.7	< 1520.00
Analytical	Conc ^c (mg/L)	Date	Conc (mg/L)	Date	Conc (mg/L)	Date	Conc (mg/L)	Date	Conc (mg/L)	Date	Conc (mg/L)	Date	Conc (mg/L)	Date	Conc (mg/L)	Date	Conc (mg/L)	Date	
Perchlorate	14	1/13/2021	12	1/13/2021	2.9	1/13/2021	9.5	1/13/2021	1.9	1/13/2021	0.21	1/13/2021	0.0045	1/13/2021	0.0022	1/13/2021	1.1	1/13/2021	
Hexavalent Chromium	0.0035	1/13/2021	ND	1/13/2021	ND	1/13/2021	0.0043	1/13/2021	ND	1/13/2021	ND	1/13/2021	ND	1/13/2021	ND	1/13/2021	ND	1/13/2021	
Total Chromium	0.0013 _j	1/13/2021	ND	1/13/2021	0.013	1/13/2021	0.0028 _j	1/13/2021	ND	1/13/2021	ND	1/13/2021	ND	1/13/2021	ND	1/13/2021	ND	1/13/2021	

Notes:
 Flow reported as gpm is a daily average calculated from the totalizer reading.
 ND = Not detected above laboratory method detection limit (Cr(TR)=2.5 ug/L, Cr(VI)=0.20 ug/L).
 J = Result is less than the reporting limit but greater than or equal to the method detection limit and the concentration is an approximate value.
 1: Analytical results are reported from Eurofins TestAmerica.
 2: On 01/12, LS #1 and SWF offline briefly due to maintenance.
 3: On 01/14, LS #1 and SWF totalizers were reset.
 4: Duplicates taken on 01/13 for well PC-116R; average of both values is presented and used for calculations.
 5: A “<” preceding the water elevation indicates the reported water level is below the transducer. Average monthly water elevation calculations include the transducer elevation in instances where the water level is below the transducer.

Nevada Environmental Response Trust Groundwater Extraction and Treatment System Enhanced Operational Metrics																	
Date	LS #3 Flow (gpm)	ART-1/1A		ART-2/2A		ART-3/3A		ART-4/4A		ART-9		ART-7A/7B		ART-8/8A		PC-150	
		Flow ³ (gpm)	Water Elevation (ft amsl)	Flow ⁴ (gpm)	Water Elevation ⁶ (ft amsl)	Flow ³ (gpm)	Water Elevation ⁷ (ft amsl)	Flow (gpm)	Water Elevation (ft amsl)	Flow (gpm)	Water Elevation (ft amsl)	Flow (gpm)	Water Elevation (ft amsl)	Flow (gpm)	Water Elevation (ft amsl)	Flow ⁸ (gpm)	Water Elevation (ft amsl)
01/01/21	416	44	1584.01	147	1583.47	22	1585.00	3.5	1578.85	56	1579.09	19	1584.61	176	1583.44	1.5	1578.66
01/02/21	371	35	1577.41	96	1584.43	19	1585.40	4.2	1578.85	56	1576.40	18	1584.58	176	1584.08	1.5	1578.72
01/03/21	351	36	1584.83	63	1584.64	23	1585.57	3.5	1578.85	56	1576.85	19	1584.58	176	1584.28	1.5	1579.11
01/04/21	386	44	1584.45	108	1583.97	23	1585.36	3.5	1578.86	56	1578.11	18	1584.61	176	1583.89	1.5	1579.24
01/05/21	409	44	1584.31	147	1583.79	23	1585.23	3.5	1578.85	56	1576.35	19	1584.58	176	1583.73	1.5	1578.82
01/06/21	408	44	1584.23	146	1583.71	22	1584.17	4.2	1578.86	56	1576.62	18	1584.58	176	1583.66	1.5	1578.76
01/07/21	407	44	1584.17	147	1583.65	22	1585.13	3.5	1578.85	56	1578.70	18	1584.58	176	1583.61	1.5	1578.77
01/08/21	407	44	1584.15	146	1583.62	22	1585.10	3.5	1578.85	56	1577.43	22	1584.58	176	1583.58	1.5	1578.68
01/09/21	406	44	1584.10	147	1583.57	21	1585.07	4.1	1578.85	56	1578.28	21	1584.58	176	1583.54	1.5	1578.65
01/10/21	406	44	1584.07	176	1583.55	22	1585.05	3.5	1578.85	57	1577.88	22	1584.61	175	1583.51	1.5	1578.71
01/11/21	405	44	1584.04	176	1583.52	22	1585.04	3.5	1578.85	56	1576.41	22	1584.58	176	1583.49	1.5	1578.68
01/12/21	405	44	1584.01	176	1583.49	22	1585.02	3.5	1578.85	56	1577.16	22	1584.61	176	1583.46	1.5	1578.68
01/13/21	405	44	1583.99	176	1583.47	22	1585.01	4.2	1578.85	56	1577.09	22	1584.58	176	1583.45	1.5	1578.75
01/14/21 ¹	406	44	1583.97	161	1583.46	22	1584.99	3.7	1578.85	56	1576.45	21	1584.58	176	1583.43	1.5	1578.72
01/15/21	405	42	1583.96	152	1583.45	22	1584.99	4.2	1578.85	56	1576.53	19	1584.58	171	1583.43	1.5	1578.74
01/16/21	406	42	1583.94	152	1583.43	22	1584.97	3.5	1578.85	56	1577.68	19	1584.58	171	1583.41	1.5	1578.69
01/17/21	405	42	1583.93	152	1583.42	22	1610.00	3.5	1578.85	56	1578.43	19	1584.55	171	1583.40	1.5	1578.68
01/18/21	402	42	1583.91	152	1583.40	22	1610.00	3.5	1578.85	56	1578.12	19	1584.58	169	1583.30	1.5	1578.68
01/19/21	402	42	1583.89	153	1583.35	22	< 1575.00	3.5	1578.85	56	1575.51	19	1584.58	169	1583.37	1.5	1578.72
01/20/21	402	42	1583.88	153	1583.31	21	1583.84	4.2	1578.85	56	1578.07	19	1584.58	169	1583.36	1.5	1578.71
01/21/21	402	42	1583.86	153	1583.49	22	1583.83	3.5	1578.85	56	1578.78	19	1584.55	169	1583.35	1.5	1578.72
01/22/21	402	42	1583.85	153	1583.48	22	1583.83	3.5	1578.85	56	1578.75	19	1584.58	172	1583.34	1.5	1578.70
01/23/21	402	41	1583.83	151	1583.46	22	1583.82	3.5	1578.85	56	1578.64	19	1584.58	176	1583.33	1.5	1578.67
01/24/21	402	40	1583.83	147	1583.45	21	1583.81	3.5	1578.85	56	1576.98	18	1584.61	176	1583.32	1.5	1578.72
01/25/21	402	40	1583.81	147	1583.43	21	1583.81	3.5	1578.85	56	1578.32	19	1584.58	175	1583.30	1.5	1578.67
01/26/21	402	40	1583.78	147	1583.41	22	1583.80	3.5	1578.85	56	1577.30	18	1584.58	176	1583.28	1.5	1578.67
01/27/21	403	42	1583.78	152	1583.41	21	1583.81	3.5	1578.85	55	1577.54	19	1584.57	171	1583.28	1.5	1578.68
01/28/21	404	42	1583.77	152	1583.40	21	1583.81	3.5	1578.85	56	1577.53	19	1584.57	171	1583.28	1.5	1578.68
01/29/21	403	42	1583.77	152	1583.40	21	1583.81	3.5	1578.85	55	1577.55	19	1584.57	171	1583.27	1.5	1578.68
01/30/21	403	42	1583.74	152	1583.37	21	1583.80	3.5	1578.85	55	1577.55	19	1584.56	171	1583.26	1.5	1578.68
01/31/21	403	42	1583.74	152	1583.37	21	1583.81	3.5	1578.85	55	1577.53	19	1584.56	171	1583.25	1.5	1578.68
Monthly Average	401	42	1583.77	148	1583.65	22	1585.87	3.6	1578.85	56	1577.60	19	1584.58	173	1583.47	1.5	1578.73
Analytical ¹		Conc (mg/L)	Date	Conc (mg/L)	Date	Conc (mg/L)	Date	Conc (mg/L)	Date	Conc (mg/L)	Date	Conc (mg/L)	Date	Conc (mg/L)	Date	Conc (mg/L)	Date
Perchlorate		29	1/13/2021	11	1/13/2021	200	1/13/2021	140	1/13/2021	170	1/13/2021	82	1/13/2021	78	1/13/2021	47	1/13/2021
Hexavalent Chromium		ND	1/13/2021	0.0042	1/13/2021	0.31	1/13/2021	0.15	1/13/2021	0.58	1/13/2021	0.44	1/13/2021	0.075	1/13/2021	0.047	1/13/2021
Total Chromium		ND	1/13/2021	ND	1/13/2021	0.30	1/13/2021	0.15	1/13/2021	0.60	1/13/2021	0.46	1/13/2021	0.072	1/13/2021	0.047	1/13/2021

Notes:
 Flow reported as gpm is a daily average calculated from the totalizer reading.
 ND = Not detected above laboratory method detection limit (ClO₄ = 0.5 ug/L; ClO₃ = 10 ug/L; NO₃-N= 0.055 mg/L, Cr(VI) = 0.25 ug/L).
 ART-1, 2, 3, 4, 7B, and 8 have adjacent recovery wells, both of which can be used for extraction. The pumping well can be chosen manually or automatically, based on operational considerations. The wells with transducers are ART-1, -2, -3, -4, -7A, -8, -9, and PC-150.
 1: Analytical results are reported from Eurofins TestAmerica.
 2: On 01/14, LS #3 and AWF totalizers were reset.
 3: On 01/02 ART-1A switched to ART-1 until 01/03 and ART-3A switched to ART-3.
 4: On 01/02, ART-2A offline until 01/04 due to maintenance.
 5: Duplicates taken on 01/13 for well ART2/2A; average of both values is presented and used for calculations.
 6: On 01/19, ART-2 transducer replaced.
 7: On 01/17, ART-3A transducer pulled for repairs. Transducer replaced on 01/19.
 8: Conducted periodic bucket tests to confirm flow rates for PC-150. Average flow of 1.5 gpm determined from flow tests is presented for 01/01-01/31 flows and used for calculation purposes. Flow was steady throughout the month but the totalizer showed zero flow because totalizer units are 1,000 gallons.

Table 3 - Interceptor Well Field (IWF) Operational Metrics

Nevada Environmental Response Trust Groundwater Extraction and Treatment System Enhanced Operational Metrics																				
Date	I-AR		I-AA		I-AB		I-AC		I-AD		I-B		I-C		I-D		I-E			
	Flow (gpm)	Water Elevation (ft amsl)	Flow (gpm)	Water Elevation (ft amsl)	Flow (gpm)	Water Elevation (ft amsl)	Flow (gpm)	Water Elevation (ft amsl)	Flow (gpm)	Water Elevation (ft amsl)	Flow ⁵ (gpm)	Water Elevation (ft amsl)	Flow ⁶ (gpm)	Water Elevation (ft amsl)	Flow ⁶ (gpm)	Water Elevation (ft amsl)	Flow ^{6,7} (gpm)	Water Elevation (ft amsl)		
01/01/21	0.15	1723.51	0.98	1707.55	0.00	1720.07	0.00	1726.90	0.9	1721.13	0.31	1718.18	4.6	1711.42	1.2	1722.45	0.78	1719.80	3.8	1721.73
01/02/21	0.16	1723.31	0.98	1707.55	0.00	1720.01	0.00	1726.88	0.9	1721.09	0.29	1718.01	4.7	1711.11	1.2	1722.42	0.94	1719.85	3.8	1721.70
01/03/21	0.16	1723.21	0.97	1707.55	0.00	1719.98	0.00	1726.89	0.9	1721.09	0.29	1717.68	4.0	1710.94	1.2	1722.40	0.94	1719.85	3.8	1721.68
01/04/21	0.16	1723.12	0.96	1707.56	0.00	1719.99	0.00	1726.95	0.9	1721.13	0.26	1719.18	3.7	1711.69	1.2	1722.39	0.9	1720.03	4.0	1721.68
01/05/21	0.16	1722.95	0.96	1707.55	0.00	1719.92	0.00	1726.85	0.9	1721.07	0.33	1711.38	3.8	1711.65	1.2	1722.36	0.94	1720.04	4.4	1721.67
01/06/21	0.16	1722.91	0.94	1707.55	0.00	1719.88	0.00	1726.84	0.9	1721.13	0.49	1713.35	3.7	1711.49	1.2	1722.34	0.88	1720.05	4.3	1721.66
01/07/21 ²	0.16	1723.01	0.94	1707.55	0.00	1719.92	0.00	1726.79	0.9	1721.07	0.35	1718.29	3.7	1711.55	1.4	1722.31	0.83	1719.96	4.2	1721.64
01/08/21	0.17	1723.29	0.95	1707.55	0.00	1719.95	0.01	1728.11	0.9	1721.20	0.23	1718.53	3.7	1711.61	1.4	1722.30	0.94	1719.93	4.3	1721.63
01/09/21	0.17	1723.35	0.95	1707.55	0.00	1719.94	0.00	1727.98	0.9	1721.21	0.23	1718.40	3.8	1711.41	1.4	1722.27	0.94	1719.84	4.4	1721.59
01/10/21	0.16	1723.33	0.94	1707.55	0.00	1719.94	0.00	1727.90	0.9	1721.21	0.23	1718.23	3.7	1711.49	1.3	1722.26	0.94	1719.89	4.5	1721.57
01/11/21	0.15	1723.36	0.94	1707.55	0.00	1719.91	0.00	1727.86	0.9	1721.21	0.26	1717.97	3.7	1711.36	1.3	1722.24	0.92	1719.88	4.3	1721.55
01/12/21	0.15	1722.23	0.94	1707.56	0.02	1719.92	0.00	1727.81	0.94	1721.26	0.27	1718.09	3.8	1710.25	1.1	1721.98	0.81	1719.96	4.3	1721.53
01/13/21 ³	0.15	1723.81	0.85	1707.55	0.00	1720.03	0.00	1727.46	0.8	1722.08	0.25	1715.46	3.2	1714.58	0.81	1722.37	0.61	1720.03	3.9	1721.69
01/14/21 ⁴	0.16	1723.36	0.93	1707.55	0.00	1719.94	0.00	1727.33	0.9	1722.04	0.25	1715.92	3.7	1709.45	1.2	1722.23	0.86	1718.71	4.3	1721.56
01/15/21	0.13	1723.39	1.0	1707.56	0.00	1719.91	0.018	1728.23	0.8	1722.11	0.42	1716.40	4.1	1709.10	1.3	1722.19	1.1	1718.79	4.2	1721.52
01/16/21	0.14	1723.23	1.0	1707.55	0.00	1719.88	0.00	1728.04	0.85	1722.07	0.39	1716.62	4.1	1709.10	1.3	1722.15	1.0	1718.94	4.2	1721.48
01/17/21	0.15	1723.02	1.0	1707.56	0.00	1719.93	0.00	1727.65	0.85	1721.93	0.24	1718.98	4.0	1708.42	1.3	1722.15	0.99	1718.96	4.2	1721.47
01/18/21	0.14	1723.34	1.0	1707.55	0.00	1719.87	0.015	1728.91	0.79	1722.56	0.32	1714.24	4.0	1708.28	1.2	1722.13	0.97	1719.02	4.1	1721.46
01/19/21	0.17	1723.11	1.0	1707.56	0.00	1719.91	0.00	1728.10	0.83	1722.13	0.33	1717.41	4.1	1708.28	1.3	1722.10	0.95	1719.17	4.2	1721.44
01/20/21	0.16	1722.90	1.0	1707.56	0.00	1719.89	0.0	1728.45	0.85	1722.00	0.32	1717.11	4.1	1708.27	1.3	1722.09	0.94	1719.12	4.2	1721.42
01/21/21	0.16	1722.84	1.0	1707.56	0.00	1719.86	0.00	1728.30	0.88	1722.03	0.33	1716.77	4.0	1708.28	1.3	1722.06	0.94	1719.14	4.2	1721.39
01/22/21	0.16	1722.90	1.0	1707.55	0.00	1719.85	0.00	1728.21	0.88	1722.00	0.30	1717.47	4.0	1708.29	1.3	1722.05	0.94	1719.19	4.2	1721.36
01/23/21	0.16	1722.98	1.0	1707.55	0.00	1719.84	0.00	1728.16	0.88	1721.97	0.28	1717.51	3.9	1708.28	1.3	1722.01	0.94	1719.18	4.2	1721.33
01/24/21	0.15	1723.03	1.0	1707.56	0.00	1719.83	0.00	1728.04	0.87	1721.98	0.28	1717.28	4.1	1708.28	1.3	1721.98	0.94	1719.16	4.2	1721.31
01/25/21	0.16	1723.07	1.0	1707.55	0.00	1719.81	0.00	1728.02	0.85	1721.99	0.29	1717.10	3.9	1708.28	1.3	1721.95	0.94	1719.06	4.2	1721.28
01/26/21	0.16	1723.10	1.0	1707.56	0.00	1719.79	0.00	1727.80	0.86	1721.93	0.29	1716.92	3.8	1708.28	1.3	1721.91	0.94	1719.02	4.2	1721.24
01/27/21	0.16	1723.11	1.0	1707.56	0.00	1719.78	0.00	1727.85	0.85	1721.93	0.30	1716.79	3.9	1708.28	1.3	1721.91	0.93	1719.01	4.2	1721.23
01/28/21	0.15	1723.09	1.0	1707.56	0.00	1719.77	0.00	1727.86	0.85	1721.96	0.30	1716.75	3.9	1708.28	1.3	1721.89	0.93	1719.00	4.2	1721.22
01/29/21	0.15	1723.13	1.0	1707.56	0.00	1719.77	0.00	1727.80	0.84	1721.99	0.26	1717.23	3.9	1708.28	1.3	1721.87	0.92	1718.98	4.2	1721.19
01/30/21	0.14	1723.16	1.0	1707.56	0.00	1719.78	0.00	1727.71	0.83	1722.01	0.21	1718.04	3.9	1708.28	1.3	1721.83	0.92	1718.95	4.2	1721.16
01/31/21	0.14	1723.17	1.0	1707.62	0.00	1719.77	0.00	1727.63	0.80	1722.14	0.21	1717.98	3.9	1708.28	1.4	1721.81	0.92	1718.93	4.2	1721.14
Monthly Average	0.15	1723.14	0.98	1707.56	0.00	1719.89	0.00	1727.72	0.88	1721.70	0.29	1717.07	3.9	1709.76	1.3	1722.14	0.92	1719.40	4.2	1721.47
Analytical ⁵	Conc (mg/L)	Date	Conc (mg/L)	Date	Conc (mg/L)	Date	Conc (mg/L)	Date	Conc (mg/L)	Date	Conc (mg/L)	Date	Conc (mg/L)	Date	Conc (mg/L)	Date	Conc (mg/L)	Date	Conc (mg/L)	Date
Perchlorate	420	1/12/2021	40	1/12/2021	170	1/12/2021	210	1/18/2021	210	1/14/2021	440	1/12/2021	510	1/12/2021	740	1/12/2021	380	1/12/2021	520	1/12/2021
Hexavalent Chromium	0.43	1/12/2021	0.055	1/12/2021	ND	1/12/2021	1.7	1/18/2021	1.9	1/14/2021	0.37	1/12/2021	2.9	1/12/2021	4.3	1/12/2021	5.3	1/12/2021	11	1/12/2021
Total Chromium	5.9	1/12/2021	0.058	1/12/2021	0.025	1/12/2021	1.8	1/18/2021	1.7	1/14/2021	0.39	1/12/2021	3.0	1/12/2021	4.3	1/12/2021	5.3	1/12/2021	11	1/12/2021

Notes:
 Flow reported as gpm is a daily average calculated from the totalizer reading.
 B = Compound was found in the blank and sample.
 1: Analytical results are reported from Eurofins TestAmerica.
 2: On 01/07 IWF offline briefly due to instrument error.
 3: On 01/13 IWF wells offline briefly due to maintenance.
 4: On 01/14, IWF totalizers were reset.
 5: On 01/05, I-B and I-S adjusted to meet flow target as directed by the Trust.
 6: On 01/14, I-C, I-D, I-E, I-L, I-N, and I-S adjusted to meet flow target as directed by the Trust.
 7: On 01/01, I-E, I-H, I-R, and I-Y adjusted to meet flow target as directed by the Trust.

Table 3 - Interceptor Well Field (IWF) Operational Metrics

Nevada Environmental Response Trust Groundwater Extraction and Treatment System Enhanced Operational Metrics																				
Date	I-G		I-H		I-I		I-J		I-K		I-L		I-M		I-N		I-O		I-P	
	Flow ^a (gpm)	Water Elevation (ft amsl)	Flow ^{a,9} (gpm)	Water Elevation (ft amsl)	Flow (gpm)	Water Elevation (ft amsl)	Flow (gpm)	Water Elevation (ft amsl)	Flow (gpm)	Water Elevation (ft amsl)	Flow ⁶ (gpm)	Water Elevation (ft amsl)	Flow (gpm)	Water Elevation (ft amsl)	Flow ^{6,9,10,11} (gpm)	Water Elevation (ft amsl)	Flow (gpm)	Water Elevation (ft amsl)	Flow (gpm)	Water Elevation (ft amsl)
01/01/21	0.15	1722.39	0.87	1721.76	4.7	1722.99	7.5	1712.50	3.8	1708.13	1.1	1721.23	1.9	1722.17	3.2	1720.97	0.35	1722.91	1.9	1722.88
01/02/21	0.15	1722.38	1.2	1721.75	4.7	1722.97	7.5	1712.47	3.8	1708.13	1.2	1720.97	1.9	1722.14	2.8	1720.94	0.35	1722.88	1.9	1722.85
01/03/21	0.15	1722.38	1.2	1721.78	4.7	1722.96	7.5	1712.47	3.8	1708.13	1.2	1720.83	1.9	1722.12	2.8	1720.92	0.35	1722.87	1.9	1722.83
01/04/21	0.15	1722.38	1.2	1721.89	4.7	1722.98	7.5	1712.38	3.8	1708.16	1.2	1720.90	1.9	1722.13	2.8	1721.06	0.35	1722.89	1.8	1722.90
01/05/21	0.15	1722.36	1.2	1721.87	4.7	1722.95	7.5	1712.55	3.8	1708.13	1.2	1720.77	1.9	1722.10	2.8	1721.04	0.35	1722.86	1.8	1722.84
01/06/21	0.15	1722.35	1.2	1721.88	4.7	1722.96	7.5	1712.44	3.8	1708.17	1.2	1720.61	1.9	1722.09	2.8	1721.04	0.35	1722.86	1.9	1722.83
01/07/21 ²	0.14	1722.35	1.0	1722.07	5.2	1722.96	7.5	1712.50	3.7	1708.14	0.97	1720.87	1.9	1722.09	3.1	1720.88	0.35	1722.86	1.9	1722.82
01/08/21	0.14	1722.36	0.94	1722.40	5.6	1722.97	7.5	1712.42	3.7	1708.15	0.94	1720.95	1.9	1722.07	2.8	1720.86	0.35	1722.87	1.9	1722.83
01/09/21	0.14	1722.33	0.94	1722.11	5.6	1722.94	7.5	1712.64	3.8	1708.15	0.94	1721.00	1.9	1722.04	2.8	1720.81	0.35	1722.84	1.9	1722.80
01/10/21	0.14	1722.32	0.94	1722.11	5.6	1722.93	7.5	1712.63	3.8	1708.13	0.94	1721.03	1.9	1722.03	2.8	1720.79	0.35	1722.84	1.9	1722.80
01/11/21	0.14	1722.30	0.94	1722.11	5.6	1722.93	7.5	1712.63	3.8	1708.13	0.94	1720.77	1.9	1722.00	2.8	1720.77	0.35	1722.83	1.9	1722.78
01/12/21	0.14	1722.29	0.94	1722.11	5.6	1722.92	7.5	1712.65	3.8	1708.15	0.94	1720.62	1.9	1721.98	2.8	1720.81	0.35	1722.82	1.9	1722.77
01/13/21 ³	0.12	1722.39	0.81	1722.32	4.9	1723.11	6.5	1712.60	3.3	1708.14	0.81	1721.59	1.6	1722.08	2.4	1721.04	0.38	1722.91	1.5	1722.95
01/14/21 ⁴	0.14	1722.32	0.96	1722.25	5.5	1723.00	7.4	1712.73	3.7	1708.15	0.92	1720.45	1.8	1722.00	2.7	1720.72	0.35	1722.86	1.8	1722.89
01/15/21	0.14	1722.34	0.87	1722.28	5.0	1723.00	7.3	1712.45	4.0	1708.16	1.2	1720.08	2.0	1721.97	3.4	1720.69	0.54	1722.87	1.7	1722.90
01/16/21	0.14	1722.32	0.87	1722.25	4.9	1722.97	7.3	1712.56	3.9	1708.17	1.2	1719.91	2.0	1721.94	3.3	1720.66	0.53	1722.84	1.7	1722.87
01/17/21	0.11	1722.46	0.86	1722.25	4.9	1722.98	7.2	1712.41	3.9	1708.14	1.2	1720.13	2.0	1721.94	3.2	1720.68	0.72	1722.77	1.7	1722.89
01/18/21	0.12	1722.38	0.84	1722.29	4.8	1723.01	7.1	1712.45	3.9	1708.17	1.2	1719.99	1.9	1721.92	2.9	1720.76	0.57	1722.89	1.6	1722.93
01/19/21	0.15	1722.19	0.89	1722.19	4.9	1722.97	7.2	1712.70	3.9	1708.14	1.2	1719.98	2.0	1721.90	2.9	1720.78	0.47	1722.86	1.6	1722.89
01/20/21	0.16	1722.21	0.91	1722.19	4.9	1722.96	7.2	1712.63	3.9	1708.14	1.2	1719.58	2.0	1721.88	3.1	1720.57	0.48	1722.86	1.6	1722.92
01/21/21	0.15	1722.23	0.93	1722.20	4.9	1722.98	7.0	1712.53	3.9	1708.13	1.2	1719.17	2.0	1721.86	3.4	1720.55	0.48	1722.86	1.6	1722.91
01/22/21	0.14	1722.24	0.88	1722.24	4.9	1722.99	7.1	1712.40	3.9	1708.16	1.2	1718.92	2.0	1721.84	3.3	1720.52	0.49	1722.87	1.6	1722.91
01/23/21	0.14	1722.23	0.88	1722.21	5.0	1722.96	7.0	1712.52	3.9	1708.13	1.2	1718.75	2.0	1721.81	3.3	1720.49	0.48	1722.85	1.6	1722.87
01/24/21	0.14	1722.24	0.88	1722.22	5.2	1722.97	7.0	1712.44	3.9	1708.14	1.3	1718.60	2.0	1721.79	3.3	1720.48	0.48	1722.86	1.6	1722.89
01/25/21	0.13	1722.23	0.75	1722.22	5.2	1722.98	7.1	1712.38	3.9	1708.14	1.3	1718.46	2.0	1721.76	3.3	1720.45	0.47	1722.86	1.6	1722.89
01/26/21	0.13	1722.21	0.64	1722.17	5.2	1722.92	7.0	1712.86	3.9	1708.13	1.3	1718.32	1.9	1721.71	3.3	1720.41	0.47	1722.80	1.6	1722.83
01/27/21	0.13	1722.21	0.65	1722.18	5.0	1722.92	7.2	1712.83	3.9	1708.15	1.2	1718.28	2.0	1721.70	3.3	1720.41	0.48	1722.80	1.7	1722.83
01/28/21	0.12	1722.24	0.71	1722.08	5.0	1722.94	7.2	1712.65	3.9	1708.15	1.2	1718.20	2.0	1721.69	3.3	1720.40	0.48	1722.82	1.7	1722.85
01/29/21	0.11	1722.29	1.1	1721.27	5.0	1722.94	7.2	1712.54	3.9	1708.15	1.2	1718.12	2.0	1721.66	3.3	1720.38	0.48	1722.81	1.7	1722.82
01/30/21	0.14	1722.15	1.1	1721.20	5.0	1722.90	7.2	1712.81	3.9	1708.15	1.2	1718.07	2.0	1721.63	3.3	1720.35	0.47	1722.76	1.7	1722.76
01/31/21	0.14	1722.14	1.0	1721.26	5.0	1722.89	7.2	1712.80	3.9	1708.15	1.2	1718.02	2.0	1721.61	3.3	1720.33	0.47	1722.74	1.7	1722.74
Monthly Average	0.14	1722.30	0.93	1722.04	5.0	1722.96	7.3	1712.57	3.8	1708.15	1.1	1719.84	1.9	1721.92	3.1	1720.70	0.44	1722.85	1.7	1722.85
Analytical ⁵	Conc (mg/L)	Date	Conc (mg/L)	Date	Conc (mg/L)	Date	Conc (mg/L)	Date	Conc ⁶ (mg/L)	Date	Conc (mg/L)	Date	Conc (mg/L)	Date	Conc (mg/L)	Date	Conc (mg/L)	Date	Conc (mg/L)	Date
Perchlorate	770	1/14/2021	840	1/14/2021	690	1/14/2021	230	1/14/2021	285	1/14/2021	240	1/12/2021	380	1/12/2021	430	1/12/2021	700	1/14/2021	830	1/14/2021
Hexavalent Chromium	15	1/14/2021	14	1/14/2021	8.0	1/14/2021	4.4	1/14/2021	2.7	1/14/2021	1.4	1/12/2021	5.1	1/12/2021	6.2	1/12/2021	13	1/14/2021	14	1/14/2021
Total Chromium	16	1/14/2021	14	1/14/2021	7.8	1/14/2021	4.1	1/14/2021	2.5	1/14/2021	1.4	1/12/2021	5.2	1/12/2021	6.3	1/12/2021	13	1/14/2021	14	1/14/2021

- Notes:
- Flow reported as gpm is a daily average calculated from the totalizer reading.
 - B = Compound was found in the blank and sample.
 - 1: Analytical results are reported from Eurofins TestAmerica.
 - 2: On 01/07 IWF offline briefly due to instrument error.
 - 3: On 01/13 IWF wells offline briefly due to maintenance.
 - 4: On 01/14, IWF totalizers were reset.
 - 6: On 01/14, I-C, I-D, I-E, I-L, I-N, and I-S adjusted to meet flow target as directed by the Trust.
 - 7: On 01/01, I-E, I-H, I-R, and I-Y adjusted to meet flow target as directed by the Trust.
 - 8: On 01/18, I-G adjusted to meet flow target as directed by the Trust.
 - 9: On 01/28, I-H adjusted to meet flow target as directed by the Trust.
 - 10: On 01/20, I-N and I-S adjusted to meet flow target as directed by the Trust.
 - 11: On 01/07, I-N and I-U adjusted to meet flow target as directed by the Trust.
 - 12: Duplicates taken on 01/14 for well I-K; average of both values is presented and used for calculations.

Table 3 - Interceptor Well Field (IWF) Operational Metrics

Date	I-Q		I-R		I-S		I-T		I-U		I-V		I-W		I-X		I-Y		I-Z	
	Flow ¹³ (gpm)	Water Elevation (ft amsl)	Flow ⁷ (gpm)	Water Elevation (ft amsl)	Flow ^{6,10,14} (gpm)	Water Elevation (ft amsl)	Flow (gpm)	Water Elevation (ft amsl)	Flow ^{11,15} (gpm)	Water Elevation (ft amsl)	Flow (gpm)	Water Elevation (ft amsl)	Flow (gpm)	Water Elevation (ft amsl)	Flow (gpm)	Water Elevation (ft amsl)	Flow ⁷ (gpm)	Water Elevation (ft amsl)	Flow (gpm)	Water Elevation (ft amsl)
01/01/21	0.23	1721.45	1.3	1721.32	1.8	1721.99	0.70	1714.57	0.54	1717.75	4.7	1721.93	0.70	1722.87	3.8	1718.45	1.3	1715.81	8.3	1714.40
01/02/21	0.23	1721.42	1.4	1721.24	1.9	1721.85	0.70	1714.54	0.59	1717.58	4.7	1721.90	0.76	1722.81	3.8	1718.41	1.4	1715.68	8.2	1714.37
01/03/21	0.28	1721.24	1.4	1721.28	1.9	1721.79	0.70	1714.53	0.59	1717.66	4.7	1721.88	0.74	1722.79	3.8	1718.40	1.4	1715.58	8.7	1714.34
01/04/21	0.27	1721.24	1.3	1721.36	1.7	1721.91	0.70	1714.49	0.54	1717.24	4.7	1721.92	0.71	1722.84	3.7	1718.41	1.4	1715.80	8.6	1714.51
01/05/21	0.25	1721.31	1.2	1721.23	1.5	1721.74	0.70	1714.38	0.47	1717.36	4.7	1721.86	0.71	1722.78	3.8	1718.37	1.4	1715.70	8.6	1714.33
01/06/21	0.23	1721.34	1.2	1721.17	1.9	1721.72	0.70	1714.40	0.47	1718.02	4.7	1721.87	0.70	1722.79	3.7	1718.37	1.4	1715.62	8.3	1714.41
01/07/21 ²	0.20	1721.47	1.2	1721.12	1.6	1721.93	0.70	1714.29	0.65	1715.90	4.7	1721.87	0.69	1722.78	3.7	1718.34	1.4	1715.83	8.2	1714.47
01/08/21	0.18	1721.45	1.3	1721.22	1.4	1721.97	0.70	1714.43	0.70	1715.19	4.7	1721.88	0.70	1722.79	3.7	1718.31	1.4	1716.01	8.5	1714.49
01/09/21	0.18	1721.41	1.4	1721.24	1.4	1721.99	0.70	1714.12	0.70	1715.70	4.7	1721.83	0.70	1722.78	3.8	1718.26	1.4	1716.01	8.5	1714.28
01/10/21	0.18	1721.40	1.4	1721.27	1.4	1721.99	0.70	1714.07	0.70	1715.21	4.0	1721.82	0.70	1722.77	3.7	1718.23	1.4	1715.97	8.8	1714.30
01/11/21	0.18	1721.38	1.4	1721.21	1.8	1721.72	0.70	1713.35	0.67	1716.13	3.7	1721.81	0.70	1722.75	3.7	1718.21	1.4	1715.85	8.5	1714.34
01/12/21	0.18	1721.37	1.4	1721.56	1.9	1721.69	0.70	1713.84	0.67	1717.06	3.8	1721.79	0.70	1722.72	3.8	1718.19	1.4	1715.91	7.8	1714.30
01/13/21 ³	0.15	1721.50	1.1	1721.82	1.5	1722.06	0.61	1714.53	0.40	1718.65	3.2	1722.08	0.60	1722.95	3.2	1718.44	1.2	1716.55	6.5	1715.54
01/14/21 ⁴	0.18	1721.43	1.3	1721.69	1.6	1721.79	0.69	1713.97	0.60	1718.17	4.0	1721.93	0.69	1722.87	3.7	1718.26	1.4	1716.27	8.1	1714.75
01/15/21	0.17	1721.41	1.1	1721.65	1.9	1721.69	0.73	1714.13	0.49	1718.28	4.4	1721.93	0.71	1722.88	3.7	1718.21	1.3	1716.17	8.5	1714.65
01/16/21	0.18	1721.35	1.1	1721.59	1.8	1721.67	0.73	1713.98	0.49	1718.22	4.4	1721.88	0.75	1722.85	3.7	1718.17	1.3	1716.10	8.4	1714.46
01/17/21	0.17	1721.42	1.1	1721.55	1.6	1721.78	0.72	1714.30	0.49	1718.25	4.4	1721.90	0.67	1722.85	3.7	1718.17	1.3	1716.06	8.3	1714.58
01/18/21	0.15	1721.43	1.1	1721.52	1.4	1721.81	0.71	1714.05	0.50	1717.86	4.3	1721.95	0.66	1722.97	3.7	1718.19	1.3	1716.09	8.2	1714.71
01/19/21	0.24	1720.94	1.1	1721.38	1.4	1721.82	0.72	1713.99	0.54	1717.10	4.4	1721.89	0.70	1722.94	3.7	1718.15	1.3	1716.03	8.4	1714.50
01/20/21	0.32	1720.93	1.1	1721.34	1.6	1721.51	0.73	1713.96	0.55	1717.65	4.5	1721.88	0.70	1722.94	3.8	1718.11	1.3	1715.95	8.4	1714.46
01/21/21	0.31	1720.92	1.1	1721.25	2.1	1721.42	0.73	1714.00	0.58	1715.72	4.5	1721.90	0.70	1722.95	3.8	1718.09	1.3	1715.82	8.4	1714.53
01/22/21	0.31	1720.89	1.1	1721.26	2.1	1721.35	0.70	1714.12	0.66	1715.94	4.5	1721.92	0.70	1722.96	3.8	1718.04	1.3	1715.72	8.4	1714.51
01/23/21	0.30	1720.88	1.1	1721.21	2.1	1721.30	0.70	1714.10	0.64	1716.30	4.5	1721.87	0.70	1722.92	3.8	1718.00	1.3	1715.66	8.4	1714.34
01/24/21	0.31	1720.83	1.1	1721.17	2.1	1721.27	0.70	1714.05	0.63	1715.93	4.3	1721.89	0.70	1722.93	3.8	1717.98	1.3	1715.63	8.4	1714.40
01/25/21	0.31	1720.82	1.1	1721.17	2.1	1721.24	0.70	1713.94	0.65	1715.41	4.2	1721.90	0.70	1722.93	3.8	1717.94	1.3	1715.58	8.4	1714.40
01/26/21	0.31	1720.78	1.1	1721.13	2.1	1721.21	0.70	1713.87	0.65	1715.93	4.2	1721.79	0.70	1722.85	3.7	1717.90	1.3	1715.64	8.4	1714.13
01/27/21	0.30	1720.79	1.1	1721.10	2.0	1721.20	0.71	1713.97	0.62	1716.10	4.4	1721.79	0.71	1722.85	3.7	1717.88	1.3	1715.62	8.5	1714.13
01/28/21	0.30	1720.77	1.1	1721.04	2.0	1721.18	0.70	1714.03	0.62	1716.25	4.4	1721.82	0.71	1722.88	3.7	1717.86	1.3	1715.58	8.5	1714.21
01/29/21	0.30	1720.76	1.1	1721.03	2.0	1721.16	0.71	1713.88	0.61	1716.34	4.4	1721.82	0.71	1722.86	3.7	1717.83	1.3	1715.56	8.5	1714.24
01/30/21	0.29	1720.72	1.1	1721.05	2.0	1721.13	0.71	1713.67	0.59	1716.55	4.4	1721.74	0.71	1722.79	3.7	1717.80	1.3	1715.57	8.5	1714.06
01/31/21	0.29	1720.71	1.1	1721.07	2.0	1721.11	0.71	1713.70	0.57	1716.86	4.4	1721.72	0.71	1722.77	3.7	1717.79	1.3	1715.56	8.5	1714.08
Monthly Average	0.24	1721.15	1.2	1721.30	1.8	1721.61	0.70	1714.10	0.59	1716.85	4.4	1721.87	0.70	1722.85	3.7	1718.15	1.3	1715.84	8.3	1714.43
Analytical ⁵	Conc (mg/L)	Date	Conc (mg/L)	Date	Conc (mg/L)	Date	Conc (mg/L)	Date	Conc (mg/L)	Date	Conc (mg/L)	Date	Conc (mg/L)	Date	Conc (mg/L)	Date	Conc (mg/L)	Date	Conc (mg/L)	Date
Perchlorate	680	1/14/2021	610	1/12/2021	240	1/12/2021	970	1/14/2021	840	1/14/2021	680	1/14/2021	710	1/14/2021	620	1/12/2021	330	1/12/2021	370	1/14/2021
Hexavalent Chromium	15	1/14/2021	0.97	1/12/2021	1.8	1/12/2021	16	1/14/2021	16	1/14/2021	9.4	1/14/2021	13	1/14/2021	7.9	1/12/2021	1.2	1/12/2021	7.5	1/14/2021
Total Chromium	15	1/14/2021	1.0	1/12/2021	1.8	1/12/2021	17	1/14/2021	16	1/14/2021	9.0	1/14/2021	13	1/14/2021	8.3	1/12/2021	1.3	1/12/2021	7.3	1/14/2021

- Notes:
- Flow reported as gpm is a daily average calculated from the totalizer reading.
 - 1: Analytical results are reported from Eurofins TestAmerica.
 - 2: On 01/07 IWF offline briefly due to instrument error.
 - 3: On 01/13 IWF wells offline briefly due to maintenance.
 - 4: On 01/14, IWF totalizers were reset.
 - 5: On 01/05, I-B and I-S adjusted to meet flow target as directed by the Trust.
 - 6: On 01/14, I-C, I-D, I-E, I-L, I-N, and I-S adjusted to meet flow target as directed by the Trust.
 - 7: On 01/01, I-E, I-H, I-R, and I-Y adjusted to meet flow target as directed by the Trust.
 - 10: On 01/20, I-N and I-S adjusted to meet flow target as directed by the Trust.
 - 11: On 01/07, I-N and I-U adjusted to meet flow target as directed by the Trust.
 - 13: On 01/04, I-Q adjusted to meet flow target as directed by the Trust.
 - 14: On 01/11, I-S adjusted to meet flow target as directed by the Trust.
 - 15: On 01/21, I-U adjusted to meet flow target as directed by the Trust.

Table 4 - Treatment Plant Operational Metrics

Nevada Environmental Response Trust Groundwater Extraction and Treatment System Enhanced Operational Metrics																
Date	LS #2	GWTP Effluent ¹				GW-11 Influent ¹				FBR Plant Influent ¹						
	Flow ³ (gpm)	Flow (gpm)	TA - Cr (TR) (mg/L)	TA - Cr (VI) (mg/L)	TA - ClO ₂ (mg/L)	Flow ⁴ (gpm)	TA - Cr (TR) (mg/L)	TA - Cr (VI) (mg/L)	TA - ClO ₂ (mg/L)	Flow ^{4,5} (gpm)	TA - ClO ₂ (mg/L)	ETI - ClO ₂ (mg/L)	TA - ClO ₂ (mg/L)	TA - NO ₃ - N (mg/L)	TA - Cr (TR) (mg/L)	TA - Cr (VI) (mg/L)
01/01/21	416	62				0.00				1,119		57				
01/02/21	371	62				0.00				1,122	68	52				
01/03/21	351	62				0.00				1,088		58				
01/04/21	386	62				9.9	0.059	0.033	53	1,063		59	110	8.9	0.029	0.018
01/05/21	409	62				0.00				1,016		53				
01/06/21	408	63	0.16	ND	460	0.00				1,015		55				
01/07/21	407	62				0.00				1,034		48				
01/08/21	407	62				0.00				1,041		54				
01/09/21	406	62				0.00				1,092	42	55				
01/10/21	406	62				0.00				1,048		56				
01/11/21	405	62				0.00				1,052		57				
01/12/21	405	63				0.00				1,038		57	9.00	0.056	0.054	
01/13/21	405	53	0.13	ND	450	0.00				1,040		55				
01/14/21	406	61				0.00				1,028		55				
01/15/21	405	62				0.00				1,057		57				
01/16/21	406	63				0.00				1,014	49	58				
01/17/21	405	62				0.00				1,074		56				
01/18/21	402	61				0.00				1,097		52	8.5	0.030	0.026	
01/19/21	402	61				0.00				1,056		52				
01/20/21	402	63	1.5	ND	470	0.00				1,053		56				
01/21/21	402	62				0.00				1,031		50				
01/22/21	402	62				0.00				1,011		58				
01/23/21	402	63				0.00				1,009	59	57				
01/24/21	402	62				0.00				1,031		57				
01/25/21	402	62				0.00				1,041		54	7.9	0.041	0.041	
01/26/21	402	62				0.00				1,063		48				
01/27/21	403	63	0.35 B	ND	530	0.07				1,058		50				
01/28/21	404	63				0.06				1,018		56				
01/29/21	403	63				0.03				1,028		57				
01/30/21	403	62				0.05				1,013	58	57				
01/31/21	403	62				0.04				1,009		50				
Monthly Average ²	401	62	0.51	ND	478	0.33	0.059	0.033	53	1,047	54	55	110	8.5	0.039	0.035

Notes:
 Flow reported as gpm is a daily average calculated from the totalizer reading. The only exceptions are the instantaneous flow readings recorded for the 1st and 2nd Stage FBR flows.
 ND = Not detected above laboratory method detection limit (ClO₂ = 0.5 ug/L; ClO₂ = 10 ug/L; NO₃-N = 0.055 mg/L, Cr(VI) = 0.25 ug/L).
 B = Compound was found in the blank and sample.
 1: ETI = Envirogen internal process control data, TA = Eurofins TestAmerica data.
 2: All average concentrations reported are monthly flow weighted averages.
 3: On 01/14 the LS #2 totalizer was reset. Instantaneous flow rate at the time of the water level measurement was used for these dates.
 4: Flows bypassed GW-11 Influent and FBR Plant Influent totalizers from 01/01 to 01/31 due to FBR plant influent strainers clogging, except for monthly sampling and maintenance.
 5: From 01/01 to 01/31, the FBR Plant Influent Flow was estimated by summing flows for LS #2, GWTP Effluent, and GW-11 Effluent.

Table 4 - Treatment Plant Operational Metrics

Nevada Environmental Response Trust Groundwater Extraction and Treatment System Enhanced Operational Metrics															
Date	1st Stage FBR ⁶			2nd Stage FBR ⁶			FBR Plant Effluent ⁷								
	Flow (gpm)	pH (s.u.)	ORP (mV)	Flow (gpm)	pH (s.u.)	ORP (mV)	Flow ⁷ (gpm)	TA - ClO ₄ (mg/L)	ETI - ClO ₄ (mg/L)	TA - ClO ₃ (mg/L)	TA - Cr (TR) (mg/L)	TA - Cr (VI) (mg/L)	TA - NO ₃ - N (mg/L)	ETI - Turbidity (NTU)	
01/01/21	1,100	6.6	-359	985	6.6	-401	1,122		ND					30	
01/02/21	1,094	6.6	-350	937	6.6	-403	1,109	ND						29	
01/03/21	1,101	6.6	-340	973	6.6	-407	863							29	
01/04/21	1,065	6.6	-357	787	6.5	-390	1,090			0.027 J	0.0032 J	ND	ND	30	
01/05/21	1,039	6.6	-294	953	6.5	-302	1,079							22	
01/06/21	1,016	6.6	-273	876	6.5	-341	1,079							24	
01/07/21	1,070	6.6	-299	966	6.5	-344	1,075							16	
01/08/21	1,113	6.6	-384	951	6.5	-354	1,082							22	
01/09/21	1,079	6.9	-399	999	6.5	-366	1,097	0.00082 J						25	
01/10/21	1,069	6.7	-406	991	6.6	-374	859							20	
01/11/21	1,247	6.7	-409	817	6.6	-382	1,086							33	
01/12/21	1,013	6.7	-410	873	6.6	-384	1,074				0.005 J	ND	ND	33	
01/13/21	1,012	6.8	-415	964	6.7	-398	1,082							30	
01/14/21	1,083	6.8	-389	975	6.6	-365	1,093							35	
01/15/21	1,028	6.7	-404	936	6.5	-376	1,086							25	
01/16/21	1,001	6.7	-414	924	6.5	-387	845							27	
01/17/21	1,069	6.7	-420	970	6.6	-396	1,093	0.0097						25	
01/18/21	1,029	6.8	-419	967	6.6	-399	1,092							43	
01/19/21	1,070	6.8	-410	916	6.6	-400	1,084				0.0046 J	ND	ND	28	
01/20/21	1,094	6.7	-392	981	6.5	-401	1,089							22	
01/21/21	1,042	6.7	-346	923	6.5	-383	1,072							33	
01/22/21	1,039	6.8	-332	895	6.5	-398	1,055							22	
01/23/21	1,035	6.7	-368	975	6.5	-401	1,058	ND						21	
01/24/21	1,095	6.8	-393	947	6.6	-406	1,070							25	
01/25/21	1,032	6.7	-396	793	6.6	-407	1,086				0.014	ND	ND	25	
01/26/21	1,066	6.8	-423	860	6.6	-411	1,078							21	
01/27/21	1,023	6.8	-422	827	6.6	-413	1,101							29	
01/28/21	1,058	6.9	-391	978	6.6	-412	987							25	
01/29/21	1,051	6.8	-362	912	6.5	-384	1,060							32	
01/30/21	1,041	6.8	-377	946	6.5	-399	1,062	ND						32	
01/31/21	1,071	6.9	-382	950	6.5	-405	1,051							29	
Monthly Average ²	1,063	6.7	-379	927	6.6	-386	1,057	0.022	ND	0.027	0.0078	ND	ND	27	

Notes:

Flow reported as gpm is a daily average calculated from the totalizer reading. The only exceptions are the instantaneous flow readings recorded for the 1st and 2nd Stage FBR flows.

ND = Not detected above laboratory method detection limit (ClO₄ = 0.5 ug/L; ClO₃ = 10 ug/L; NO₃-N= 0.055 mg/L, Cr(VI) = 0.25 ug/L).

J = Result is less than the reporting limit but greater than or equal to the method detection limit and the concentration is an approximate value.

1: ETI = Envirogen internal process control data, TA = Eurofins TestAmerica data.

2: All average concentrations reported are monthly flow weighted averages.

6: For 1st and 2nd stage FBRs, flow measurements are collected from the influent lines and pH and ORP samples are collected from the recycle lines

7: FBR Plant Effluent represents effluent discharged to Las Vegas Wash. While this may represent the entirety of the FBR Plant effluent, any diversions to GW-11 are subtracted from the original effluent flow.

GW-11 Level Monitoring ¹				
Date	Field Measurement (ft)	Volume (MG)		
01/15/21	31.7	34.4		
01/31/21	31.7	34.4		

GW-11 Leak Detection Monitoring				
Date	Amount Pumped ² (gallons)			
	NW Corner	NE Corner	SW Corner	SE Corner
01/13/21	0	0	885	0
01/27/21	0	0	600	0

GW-11 Composite Sample ³		
Analytes	Concentration	Units
Perchlorate	5.7	mg/L
Chlorate	5.0	mg/L
Ammonia as N	0.069	mg/L
Total Phosphorus	0.57	mg/L
Total Dissolved Solids (TDS)	12,000	mg/L
Total Suspended Solids (TSS)	60	mg/L
pH	8.8 HF	s.u.
Calcium	550	mg/L
Iron	1.0	mg/L
Chromium (total)	0.022	mg/L
Chromium VI	ND	mg/L
Chloride	4,000	mg/L
Nitrate as N	ND	mg/L
Sulfate	3,500	mg/L

Notes:

HF = Field parameter with a holding time of 15 minutes. Test performed by laboratory at client's request.

J = Result is less than the reporting limit but greater than or equal to the method detection limit and the concentration is an approximate value.

ND = Not detected above laboratory method detection limit (NH₃-N= 0.1 mg/L; Total P = 0.025 ug/L; Cr(VI) = 0.25 ug/L).

- 1: A transducer installed along the eastern berm provides water pressure measurements that are correlated to elevations for calculation of water depths. Results from a December 2018 bathymetric survey of the pond will be used to identify adjustment to the procedure, if necessary.
- 2: Pumping occurs over three consecutive days. The total amount pumped over the three day period is listed with the last day pumping occurred.
- 3: GW-11 Corner Composite Sample is collected quarterly, most recent sampling results are presented. Sampled on: November 12, 2020.

Nevada Environmental Response Trust Groundwater Extraction and Treatment System Enhanced Operational Metrics						
Date	Flow ¹ (gpm)	FBR Influent Concentration			Influent Function Load ³ (lbs/day)	6 Month Rolling Average (lbs/day)
		ClO ₄ ² (mg/L)	NO ₃ as N (mg/L)	ClO ₃ (mg/L)		
Feb 2020	1,060	54	10	120	502	730
Mar 2020	1,073	66	10	130	556	713
Apr 2020	1,078	77	11	100	525	658
May 2020	1,065	86	11	120	582	598
June 2020	1,019	98	12	120	592	548
July 2020	1,035	66	11	91	458	536
Aug 2020	1,040	59	9	100	444	526
Sep 2020	1,038	59	9	120	492	516
Oct 2020	1,029	64	9	94	441	501
Nov 2020	1,037	56	10	100	451	480
Dec 2020	1,027	59	9	130	507	465
Jan 2021	1,047	54	9	110	454	465

Notes:

Concentrations and flow are presented as monthly average.

1: Flow used in loading calculation is average monthly FBR effluent flow to be consistent with historical loading calculations.

2: The AP-5 wash water feed rate was increased on October 1, 2019 in accordance with the higher seasonal ammonia permit limits beginning October 1. The AP-5 wash water feed rate was decreased in March 2020 to prepare for the lower seasonal ammonia permit limits beginning April 1. AP-5 sediment mixing and solids washing activities were completed on January 4, 2020. AP-5 tank processing was completed on 7/15/20.

3: FBR loading calculated as $[(0.9 \cdot \text{NO}_3 \text{ as N} + 0.17 \cdot \text{ClO}_3 + 0.18 \cdot \text{ClO}_4) \cdot \text{Flow} \cdot 1440 / 1000000 \cdot 8.34]$.

Nevada Environmental Response Trust Groundwater Extraction and Treatment System Enhanced Operational Metrics																
Date	E1-1		E1-2		E1-3		E2-1		E2-2		E2-3		E2-4		E2-5	
	Flow (gpm)	Water Elevation (ft amsl)	Flow (gpm)	Water Elevation (ft amsl)	Flow (gpm)	Water Elevation (ft amsl)	Flow ⁴ (gpm)	Water Elevation (ft amsl)	Flow (gpm)	Water Elevation (ft amsl)	Flow (gpm)	Water Elevation (ft amsl)	Flow (gpm)	Water Elevation (ft amsl)	Flow ⁴ (gpm)	Water Elevation (ft amsl)
01/01/21	0.43	1711.88	0.84	1710.05	0.65	1710.54	0.91	1713.41	1.0	1716.31	1.4	1714.25	1.6	1714.61	0.45	1713.22
01/02/21	0.44	1712.03	0.84	1709.85	0.65	1711.67	0.97	1712.47	1.0	1716.00	1.4	1714.70	1.6	1714.03	0.45	1713.02
01/03/21	0.44	1711.77	0.83	1709.62	0.64	1710.58	0.93	1710.96	1.0	1716.11	1.4	1713.44	1.5	1713.79	0.45	1709.96
01/04/21	0.41	1712.04	0.83	1709.84	0.64	1710.63	0.95	1713.28	1.0	1716.59	1.4	1714.88	1.6	1713.83	0.41	1710.14
01/05/21	0.41	1712.06	0.81	1709.81	0.63	1710.60	0.94	1712.29	1.0	1716.14	1.4	1714.48	1.6	1713.77	0.41	1713.68
01/06/21	0.41	1712.46	0.82	1709.38	0.62	1710.46	0.95	1713.62	1.0	1716.79	1.4	1715.07	1.5	1714.11	0.41	1714.21
01/07/21 ²	0.41	1712.51	0.82	1709.75	0.61	1710.53	0.77	1712.51	0.86	1716.27	1.1	1715.22	1.3	1715.77	0.34	1713.63
01/08/21	0.41	1713.58	0.83	1709.70	0.64	1710.50	0.86	1714.34	0.97	1717.60	1.3	1719.53	1.4	1713.80	0.32	1717.96
01/09/21	0.41	1713.28	0.84	1709.61	0.63	1710.44	1.0	1713.14	1.2	1716.06	1.4	1715.83	1.6	1713.31	0.30	1713.97
01/10/21	0.41	1712.59	0.84	1710.75	0.64	1710.37	0.98	1711.24	1.1	1716.40	1.3	1715.71	1.6	1713.50	0.32	1717.54
01/11/21	0.40	1713.68	0.85	1710.25	0.63	1710.64	0.98	1712.97	1.1	1714.87	1.4	1715.30	1.6	1713.56	0.34	1715.34
01/12/21	0.41	1712.88	0.83	1710.71	0.62	1710.45	0.63	1713.47	0.73	1716.41	0.86	1716.05	1.1	1714.29	0.23	1715.85
01/13/21 ²	0.38	1713.58	0.80	1710.95	0.61	1709.41	0.92	1712.61	1.1	1715.51	1.2	1716.94	1.6	1713.00	0.50	1722.95
01/14/21	0.40	1714.48	0.84	1709.66	0.65	1710.52	0.83	1709.07	1.1	1716.87	1.3	1716.45	1.6	1713.71	0.47	1710.12
01/15/21	0.50	1715.24	0.8	1709.68	0.64	1710.47	0.89	1715.14	1.1	1717.00	1.3	1717.72	1.6	1713.72	0.37	1710.00
01/16/21	0.48	1710.17	0.83	1709.85	0.63	1710.39	0.86	1715.02	1.1	1716.92	1.3	1717.42	1.6	1713.69	0.31	1715.21
01/17/21	0.49	1710.08	0.84	1709.74	0.65	1710.53	0.00	1714.91	1.2	1716.77	1.4	1717.20	1.6	1713.60	0.31	1715.04
01/18/21 ²	0.40	1709.99	0.71	1709.67	0.54	1710.47	0.65	1724.41	0.99	1715.75	1.2	1714.96	1.3	1753.50	0.03	1717.10
01/19/21	0.46	1723.76	0.87	1725.13	0.69	1725.77	0.78	1725.30	1.2	1722.80	1.1	1723.61	1.7	1722.11	0.20	1727.68
01/20/21	0.45	1709.55	0.85	1709.77	0.67	1710.52	0.87	1718.90	1.1	1716.46	1.2	1718.21	1.6	1713.80	0.35	1719.40
01/21/21	0.43	1710.11	0.84	1709.72	0.65	1710.46	0.86	1716.54	0.80	1715.46	1.3	1715.92	1.6	1713.73	0.35	1715.85
01/22/21	0.48	1710.40	0.84	1709.85	0.64	1710.45	0.89	1717.49	1.4	1715.97	1.2	1716.22	1.6	1713.63	0.34	1715.86
01/23/21	0.40	1710.23	0.84	1709.74	0.63	1710.47	0.96	1716.85	1.1	1716.60	1.2	1716.56	1.6	1714.27	0.34	1715.80
01/24/21	0.44	1710.49	0.84	1710.30	0.61	1710.84	0.97	1716.28	1.1	1716.46	1.2	1717.14	1.6	1714.34	0.35	1715.47
01/25/21	0.44	1710.15	0.84	1709.82	0.64	1710.54	0.89	1716.34	1.1	1716.55	1.2	1717.23	1.6	1713.65	0.32	1716.20
01/26/21	0.45	1710.17	0.85	1709.74	0.61	1710.44	0.91	1715.41	1.1	1716.80	1.2	1717.61	1.6	1713.60	0.33	1717.32
01/27/21	0.44	1713.28	0.86	1709.87	0.63	1710.60	0.91	1716.89	1.1	1716.96	1.2	1717.88	1.6	1713.83	0.32	1717.59
01/28/21	0.43	1709.71	0.87	1709.26	0.63	1710.20	0.89	1715.84	1.1	1716.40	1.2	1717.18	1.6	1713.47	0.32	1717.03
01/29/21	0.46	1710.31	0.85	1709.77	0.62	1710.53	0.93	1716.40	1.1	1716.69	1.1	1717.63	1.6	1713.66	0.31	1717.18
01/30/21	0.46	1710.36	0.86	1710.04	0.62	1710.55	0.92	1715.99	1.1	1716.47	1.1	1717.94	1.6	1713.90	0.30	1717.60
01/31/21	0.47	1710.27	0.86	1709.84	0.61	1710.63	0.93	1716.56	1.1	1716.86	1.1	1718.21	1.6	1713.81	0.32	1717.53
Monthly Average	0.43	1712.04	0.84	1710.38	0.63	1711.01	0.86	1715.15	1.1	1716.61	1.3	1716.66	1.5	1715.40	0.34	1715.78
Analytical ¹	Conc (mg/L)	Date	Conc (mg/L)	Date	Conc (mg/L)	Date	Conc ² (mg/L)	Date	Conc (mg/L)	Date	Conc (mg/L) ³	Date	Conc (mg/L)	Date	Conc (mg/L)	Date
Perchlorate	500	1/18/2021	1,100	1/18/2021	470	1/18/2021	57	1/18/2021	370	1/18/2021	895	1/18/2021	900	1/18/2021	1,100	1/18/2021
Hexavalent Chromium	0.062	1/18/2021	0.41	1/18/2021	0.61	1/18/2021	0.024	1/18/2021	0.025	1/18/2021	0.073	1/18/2021	0.074	1/18/2021	0.18	1/18/2021
Total Chromium	0.063	1/18/2021	0.42	1/18/2021	0.64	1/18/2021	0.029	1/18/2021	0.027	1/18/2021	0.082	1/18/2021	0.070	1/18/2021	0.21	1/18/2021

Notes:
 Flow reported as gpm is a daily average calculated from the totalizer reading.
 The flow rate at individual wells is adjusted daily to maintain the water level in the wells above the pump.
 1: Analytical results are reported from Eurofins TestAmerica.
 2: On 01/07, 01/13, and 01/18, AP Area wells down briefly due to maintenance.
 4: On 01/17, E2-1 and E2-5 offline intermittently due to instrument error.
 5: Duplicates taken on 01/18 for well E2-3; average of both values is presented and used for calculations.

Figure 1 - GW-11 Pond Volume and FBR Influent Perchlorate Concentration

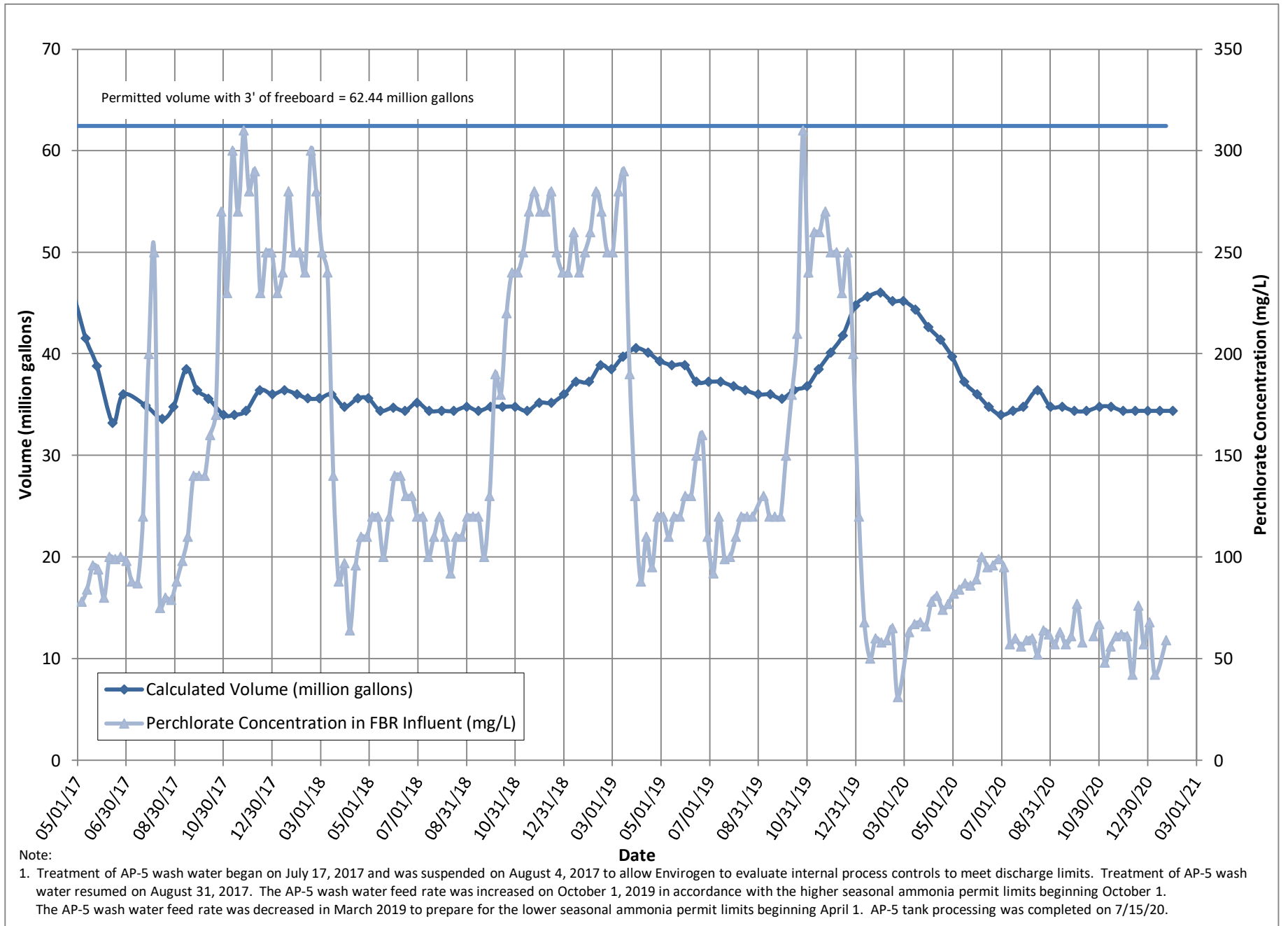


Figure 2 - FBR Equivalent Loading Calculation

