

Table 1 - Seep Well Field (SWF) Operational Metrics

Nevada Environmental Response Trust Groundwater Extraction and Treatment System Enhanced Operational Metrics																			
Date	LS #1 Flow ^a (gpm)	PC-116R (East Well)		PC-99R2/R3 (Center Well)		PC-115R (West Well)		PC-117		PC-118		PC-119		PC-120		PC-121		PC-133	
		Flow (gpm)	Water Elevation (ft amsl)	Flow (gpm)	Water Elevation (ft amsl)	Flow (gpm)	Water Elevation (ft amsl)	Flow (gpm)	Water Elevation (ft amsl)	Flow (gpm)	Water Elevation (ft amsl)	Flow (gpm)	Water Elevation (ft amsl)	Flow (gpm)	Water Elevation (ft amsl)	Flow (gpm)	Water Elevation (ft amsl)	Flow (gpm)	Water Elevation (ft amsl)
02/01/18	652	165	1533.14	89	1541.59	128	1542.55	114	1537.52	60	1546.87	100	1548.08	51	1549.25	20	1550.33	10	1523.85
02/02/18	653	171	1533.15	92	1541.56	133	1542.64	119	1537.58	62	1546.96	104	1548.17	52	1549.34	21	1550.43	9.9	1523.90
02/03/18	653	168	1533.27	90	1541.17	130	1542.73	117	1537.65	61	1547.05	101	1548.26	51	1549.44	20	1550.53	10	1524.33
02/04/18	653	166	1533.41	90	1541.57	129	1542.82	115	1537.72	60	1547.15	101	1548.36	51	1549.54	19	1550.63	10	1524.06
02/05/18 ²	584	168	1533.47	73	1541.38	131	1542.91	117	1537.79	60	1547.25	102	1548.46	51	1549.64	20	1550.73	10	1524.17
02/06/18	654	168	1534.07	91	1541.61	131	1542.97	117	1537.84	61	1547.30	102	1548.47	51	1549.70	20	1550.79	10	1524.17
02/07/18	654	170	1534.14	93	1541.84	132	1543.05	118	1537.89	62	1547.37	103	1548.53	52	1549.77	20	1550.87	11	1524.15
02/08/18	655	168	1534.05	91	1541.76	131	1543.12	116	1537.96	60	1547.45	102	1548.61	51	1549.85	19	1550.95	9.7	1524.33
02/09/18	665	169	1534.00	93	1541.66	130	1543.22	117	1538.04	61	1547.53	103	1548.69	52	1549.93	20	1551.03	10	1524.33
02/10/18	659	167	1534.45	91	1541.48	130	1543.26	116	1538.06	60	1547.57	101	1548.73	51	1549.98	20	1551.08	10	1524.24
02/11/18	655	167	1534.06	92	1541.67	130	1543.35	116	1538.13	60	1547.67	102	1548.84	50	1550.08	20	1551.18	9.7	1524.40
02/12/18 ²	581	168	1534.53	94	1541.89	131	1543.38	117	1538.16	61	1547.71	102	1548.88	51	1550.12	20	1551.23	10	1524.34
02/13/18	655	169	1534.80	93	1541.74	132	1543.45	117	1538.22	61	1547.78	103	1548.95	52	1550.19	20	1551.30	10	1524.47
02/14/18	655	168	1534.74	92	1541.69	131	1543.52	117	1538.28	60	1547.84	102	1549.02	51	1550.27	20	1551.38	10	1524.43
02/15/18	656	170	1535.01	94	1541.80	132	1543.54	118	1538.30	62	1547.87	103	1549.05	52	1550.29	20	1551.41	9.9	1524.40
02/16/18	666	169	1535.04	93	1541.57	130	1543.61	116	1538.51	60	1547.92	101	1549.10	51	1550.34	20	1551.46	10	1524.43
02/17/18	658	168	1534.81	93	1542.11	131	1543.65	117	1538.53	61	1547.96	103	1549.14	51	1550.39	19	1551.51	10	1524.62
02/18/18	658	171	1534.48	95	1541.48	134	1543.69	119	1538.56	61	1548.01	104	1549.19	52	1550.42	20	1551.54	9.9	1524.70
02/19/18 ²	571	168	1534.86	91	1541.76	131	1543.64	117	1538.52	61	1547.96	102	1549.14	51	1550.38	20	1551.50	10	1524.56
02/20/18	658	169	1535.06	93	1541.70	132	1543.64	117	1538.51	61	1547.96	102	1549.14	52	1550.38	19	1551.50	10	1524.51
02/21/18	657	165	1535.12	91	1541.75	129	1543.64	114	1538.50	60	1547.95	100	1549.13	50	1550.37	20	1551.49	10	1524.53
02/22/18	661	168	1535.05	94	1541.70	131	1543.63	116	1538.50	60	1547.96	102	1549.13	51	1550.37	19	1551.49	9.7	1524.51
02/23/18	668	167	1535.37	92	1541.75	130	1543.60	116	1538.45	61	1547.90	101	1549.08	51	1550.31	20	1551.43	10	1524.45
02/24/18	676	169	1535.15	93	1542.01	132	1543.59	117	1538.45	61	1547.91	103	1549.07	51	1550.30	20	1551.43	9.8	1524.50
02/25/18	699	169	1535.14	94	1541.79	132	1543.58	117	1538.44	61	1547.89	103	1549.06	52	1550.29	20	1551.41	10	1524.45
02/26/18 ²	584	168	1534.91	92	1541.85	131	1543.57	117	1538.44	61	1547.88	102	1549.05	51	1550.28	20	1551.40	10	1524.42
02/27/18	736	168	1535.22	93	1541.64	131	1543.52	117	1538.39	60	1547.84	102	1549.00	51	1550.23	19	1551.35	9.7	1524.52
02/28/18	750	169	1535.37	93	1541.99	132	1543.49	118	1538.36	61	1547.80	103	1548.96	52	1550.19	20	1551.30	10	1524.43
Monthly Average	654	168	1534.50	92	1541.70	131	1543.33	117	1538.19	61	1547.65	102	1548.83	51	1550.06	20	1551.17	10	1524.35
Analytical ¹	Conc (mg/L)	Date	Conc (mg/L)	Date	Conc (mg/L)	Date	Conc (mg/L)	Date	Conc (mg/L)	Date	Conc ^c (mg/L)	Date	Conc (mg/L)	Date	Conc (mg/L)	Date	Conc (mg/L)	Date	
Perchlorate	6.6	2/6/2018	7.5	2/6/2018	6.9	2/6/2018	3.3	2/6/2018	5.3	2/6/2018	1.0	2/6/2018	0.094	2/6/2018	0.12	2/6/2018	1.5	2/6/2018	
Hexavalent Chromium	0.0026	2/6/2018	0.00036	2/6/2018	ND	2/6/2018	0.0026	2/6/2018	ND	2/6/2018	ND	2/6/2018	ND	2/6/2018	ND	2/6/2018	ND	2/6/2018	
Total Chromium	0.0029	J 2/6/2018	ND	2/6/2018	ND	2/6/2018	0.0032	J 2/6/2018	ND	2/6/2018	ND	2/6/2018	ND	2/6/2018	ND	2/6/2018	ND	2/6/2018	

Notes:

- Flow reported as gpm is a daily average calculated from the totalizer reading.
- ND = Not detected above laboratory method detection limit (Cr(TR)=2.5 ug/L, Cr(VI) =0.20 ug/L).
- J = Result is less than the reporting limit but greater than or equal to the method detection limit and the concentration is an approximate value.
- 1: Analytical results are reported from TestAmerica.
- 2: On 02/05, 02/12, 02/19, and 02/26, the LS #1 and SWF totalizers were reset. Instantaneous flow rate at the time of the water level measurement was used for these dates.
- 3: From 02/22-02/28, LS #1 received excess IX System flow because of reduced flow capacity for the IX System during maintenance.
- 4: Duplicates taken on 02/06 for well PC-119; average of both values is presented and used for calculation.

Nevada Environmental Response Trust Groundwater Extraction and Treatment System Enhanced Operational Metrics																	
Date	LS #3 Flow (gpm)	ART-1/1A		ART-2/2A		ART-3/3A		ART-4/4A		ART-9		ART-7A/7B		ART-8/8A		PC-150	
		Flow (gpm)	Water Elevation (ft amsl)	Flow ² (gpm)	Water Elevation (ft amsl)	Flow (gpm)	Water Elevation (ft amsl)	Flow ⁴ (gpm)	Water Elevation (ft amsl)	Flow (gpm)	Water Elevation (ft amsl)	Flow (gpm)	Water Elevation (ft amsl)	Flow (gpm)	Water Elevation (ft amsl)	Flow ⁶ (gpm)	Water Elevation (ft amsl)
02/01/18	398	40	1583.00	140	1582.28	18	1580.69	4.0	1579.12	60	1580.90	16	1580.57	178	1582.24	1.5	1576.69
02/02/18	397	40	1583.06	137	1582.36	18	1580.73	4.0	1579.12	61	1580.94	16	1581.42	177	1582.30	1.5	1576.69
02/03/18	397	40	1583.11	137	1582.41	19	1580.77	4.0	1579.12	60	1580.94	16	1580.48	176	1582.35	1.5	1576.69
02/04/18	396	40	1583.18	135	1582.60	19	1580.81	4.0	1579.12	61	1580.97	16	1581.92	176	1582.41	1.5	1576.69
02/05/18 ²	385	40	1583.24	132	1582.63	19	1580.86	4.0	1579.11	76	1580.12	27	1580.12	177	1582.46	1.5	1576.69
02/06/18	401	40	1583.00	138	1582.34	19	1582.60	4.0	1579.12	62	1580.79	16	1581.84	178	1582.56	1.5	1576.70
02/07/18	409	41	1583.00	149	1582.34	19	1582.60	4.0	1579.13	62	1580.81	16	1581.52	177	1582.56	1.5	1576.70
02/08/18	410	40	1583.02	149	1582.36	19	1582.63	4.0	1579.13	62	1580.87	16	1580.41	177	1582.58	1.5	1576.71
02/09/18	410	40	1583.05	149	1582.39	19	1582.65	4.0	1579.13	64	1580.87	16	1581.71	177	1582.61	1.5	1576.71
02/10/18	410	41	1583.08	148	1582.42	19	1582.67	4.0	1579.13	63	1580.91	16	1580.01	176	1582.63	1.5	1576.70
02/11/18	412	40	1583.12	148	1582.46	19	1582.69	4.0	1579.13	64	1580.94	16	1581.54	176	1582.66	1.5	1576.71
02/12/18 ²	438	40	1583.14	147	1582.48	18	1582.72	4.0	1579.13	81	1580.96	39	1580.06	177	1582.69	1.5	1576.70
02/13/18	413	40	1583.18	149	1582.52	20	1582.75	4.0	1579.13	65	1581.00	16	1580.96	178	1582.73	1.5	1576.70
02/14/18	413	40	1583.22	149	1582.56	19	1582.78	4.0	1579.13	66	1581.02	16	1580.57	177	1582.76	1.5	1576.70
02/15/18	414	40	1583.25	149	1582.59	20	1582.80	4.0	1579.13	66	1581.05	15	1579.88	177	1582.79	1.5	1576.70
02/16/18	414	40	1583.29	150	1582.63	19	1582.83	4.0	1579.12	67	1581.05	17	1580.37	176	1582.82	1.5	1576.70
02/17/18	415	40	1583.33	148	1582.67	20	1582.86	4.0	1579.13	67	1581.08	16	1580.46	176	1582.86	1.5	1576.71
02/18/18	416	40	1583.36	148	1582.70	20	1582.88	4.0	1579.13	68	1581.13	16	1579.91	176	1582.89	1.5	1576.71
02/19/18 ²	408	40	1583.38	149	1582.72	17	1582.90	4.0	1579.13	57	1581.11	8.3	1581.59	178	1582.90	1.5	1576.70
02/20/18	416	40	1583.41	150	1582.75	19	1582.92	4.0	1579.12	68	1581.12	17	1579.98	178	1582.93	1.5	1576.70
02/21/18	416	40	1583.43	149	1582.77	20	1582.94	4.0	1579.13	68	1581.15	16	1580.90	178	1582.95	1.5	1576.70
02/22/18	417	40	1583.45	149	1582.80	20	1582.96	4.0	1579.12	69	1581.15	17	1580.58	177	1582.97	1.5	1576.72
02/23/18	417	40	1583.47	150	1582.81	20	1582.97	4.0	1579.12	69	1581.18	16	1580.43	177	1582.98	1.5	1576.70
02/24/18	417	40	1583.48	148	1582.83	20	1582.98	4.0	1579.12	69	1581.18	16	1581.73	176	1583.00	1.5	1576.74
02/25/18	417	41	1583.50	148	1582.84	20	1583.00	4.0	1579.12	69	1581.18	16	1580.54	177	1583.02	1.5	1576.72
02/26/18 ²	415	40	1583.52	152	1582.86	23	1583.01	4.0	1579.12	82	1581.18	18	1581.67	180	1583.03	1.5	1576.78
02/27/18	418	40	1583.52	150	1582.86	20	1583.01	4.0	1579.12	70	1581.19	16	1581.49	178	1583.04	1.5	1576.75
02/28/18	418	40	1583.53	149	1582.87	20	1583.02	4.0	1579.12	69	1581.15	16	1581.84	178	1583.04	1.5	1576.71
Monthly Average	411	40	1583.26	146	1582.60	19	1582.47	4.0	1579.12	67	1581.00	17	1580.88	177	1582.74	1.5	1576.71
Analytical	Conc (mg/L)	Date	Conc (mg/L)	Date	Conc (mg/L)	Date	Conc (mg/L)	Date	Conc ² (mg/L)	Date	Conc (mg/L)	Date	Conc (mg/L)	Date	Conc (mg/L)	Date	
Perchlorate	23	2/7/2018	13	2/7/2018	190	2/7/2018	120	2/7/2018	185	2/7/2018	80	2/7/2018	87	2/7/2018	84	2/7/2018	
Hexavalent Chromium	ND	2/7/2018	0.0078	2/7/2018	0.36	2/7/2018	0.16	2/7/2018	0.70	2/7/2018	0.57	2/7/2018	0.11	2/7/2018	0.067	2/7/2018	
Total Chromium	ND	2/7/2018	0.0082	2/7/2018	0.35	2/7/2018	0.17	2/7/2018	0.71	2/7/2018	0.55	2/7/2018	0.11	2/7/2018	0.065	2/7/2018	

Notes:
 Flow reported as gpm is a daily average calculated from the totalizer reading.
 ND = Not detected above laboratory method detection limit (ClO₂ = 0.5 ug/L; ClO₃ = 10 ug/L; NO₃-N = 0.055 mg/L, Cr(VI) = 0.25 ug/L).
 ART-1, 2, 3, 4, 7B, and 8 have adjacent recovery wells, both of which can be used for extraction. The pumping well can be chosen manually or automatically, based on operational considerations. The wells with transducers are ART-1, -2, -3, -4, -7A, -8, -9, and PC-150.
 1: Analytical results are reported from TestAmerica.
 2: On 02/05, 02/12, 02/19, and 02/26, the LS #3 and AWF totalizers were reset. Instantaneous flow rate at the time of the water level measurement was used for these dates.
 3: On 02/05, ART-2 offline at 2:50 pm due to broken VFD fan; ART-2A remained online. Both ART-2 and ART-2A online at 3:06 pm.
 4: Conducted periodic bucket tests to confirm flow rates for ART-4. Average flow of 4.0 gpm determined from flow tests is presented for 02/01-02/28 flows and used for calculation purposes. Flow was steady throughout February but the totalizer showed zero flow because totalizer units are 1,000 gallons.
 5: Duplicates taken on 02/07 for well ART-9; average of both values is presented and used for calculation.
 6: Conducted periodic bucket tests to confirm flow rates for PC-150. Average flow of 1.5 gpm determined from flow tests is presented for 02/01-02/28 flows and used for calculation purposes. Flow was steady throughout February but the totalizer showed zero flow because totalizer units are 1,000 gallons.

Table 3 - Interceptor Well Field (IWF) Operational Metrics

Nevada Environmental Response Trust Groundwater Extraction and Treatment System Enhanced Operational Metrics																				
Date	I-AR		I-AA		I-AB		I-AC		I-AD		I-B		I-C		I-D		I-E		I-F	
	Flow (gpm)	Water Elevation (ft amsl)	Flow (gpm)	Water Elevation (ft amsl)	Flow (gpm)	Water Elevation (ft amsl)	Flow (gpm)	Water Elevation (ft amsl)	Flow (gpm)	Water Elevation (ft amsl)	Flow (gpm)	Water Elevation (ft amsl)	Flow (gpm)	Water Elevation (ft amsl)	Flow (gpm)	Water Elevation (ft amsl)	Flow (gpm)	Water Elevation (ft amsl)	Flow (gpm)	Water Elevation (ft amsl)
02/01/18	0.17	1725.09	1.2	1707.19	0.00	NM	0.00	1723.94	0.00	1725.14	0.51	1710.01	4.0	1708.06	1.3	1720.66	1.4	1709.37	4.3	1712.30
02/02/18	0.19	1724.98	1.2	1707.31	0.00	NM	0.00	1723.96	0.00	1725.15	0.51	1709.96	4.0	1707.91	1.3	1720.78	1.4	1708.51	4.3	1712.38
02/03/18	0.19	1724.99	1.2	1707.39	0.00	NM	0.00	1723.96	0.00	1725.15	0.51	1709.99	4.0	1707.93	1.3	1720.87	1.4	1709.43	4.4	1712.45
02/04/18	0.18	1725.08	1.2	1706.95	0.00	NM	0.00	1723.98	0.00	1725.16	0.52	1709.98	4.0	1708.01	1.3	1720.97	1.4	1708.57	4.5	1712.53
02/05/18 ¹	0.18	1725.09	1.2	1707.34	0.00	NM	0.00	1724.00	0.00	1725.18	0.52	1710.01	4.0	1707.82	1.3	1721.06	1.4	1708.84	4.4	1712.60
02/06/18	0.18	1725.00	1.2	1707.32	0.00	NM	0.00	1723.94	0.00	1725.15	0.51	1709.99	4.0	1707.88	1.3	1721.13	1.4	1709.06	4.4	1712.65
02/07/18	0.18	1725.10	1.2	1707.37	0.00	NM	0.00	1723.94	0.00	1725.15	0.51	1709.95	4.0	1707.85	1.3	1721.21	1.4	1709.49	4.4	1712.71
02/08/18	0.17	1725.03	1.2	1707.27	0.00	NM	0.02	1723.97	0.01	1725.17	0.50	1709.95	4.0	1707.92	1.3	1721.30	1.4	1709.89	4.3	1712.76
02/09/18	0.17	1724.95	1.2	1707.35	0.00	NM	0.00	1724.03	0.00	1725.19	0.50	1709.97	4.0	1707.87	1.3	1721.40	1.4	1710.25	4.3	1712.81
02/10/18	0.18	1724.89	1.2	1707.19	0.00	NM	0.00	1723.97	0.00	1725.18	0.50	1709.98	4.0	1707.91	1.2	1721.47	1.4	1710.34	4.4	1712.82
02/11/18	0.18	1724.92	1.2	1707.42	0.00	NM	0.00	1724.06	0.00	1725.20	0.50	1709.95	4.0	1707.81	1.2	1721.55	1.5	1710.86	4.5	1712.88
02/12/18 ³	0.17	1725.50	1.2	1707.31	0.00	NM	0.00	1723.99	0.00	1725.19	0.55	1709.88	4.1	1707.86	1.2	1721.56	1.4	1710.79	4.4	1712.89
02/13/18	0.18	1724.97	1.2	1707.36	0.00	NM	0.00	1723.97	0.00	1725.18	0.50	1709.99	4.0	1707.84	1.8	1717.72	1.4	1710.39	4.4	1712.93
02/14/18	0.18	1724.89	1.1	1707.38	0.00	NM	0.00	1724.00	0.00	1725.19	0.50	1709.96	4.0	1707.72	2.2	1717.33	1.4	1709.93	4.4	1712.96
02/15/18	0.18	1724.85	1.1	1708.42	0.00	NM	0.00	1723.96	0.00	1725.17	0.50	1709.97	4.0	1707.82	2.2	1716.76	1.4	1709.39	4.3	1712.98
02/16/18	0.18	1724.80	1.1	1707.76	0.00	NM	0.00	1723.98	0.00	1725.18	0.50	1710.00	4.0	1707.92	2.1	1716.01	1.5	1709.01	4.3	1713.00
02/17/18	0.18	1724.81	1.1	1707.99	0.00	NM	0.00	1724.01	0.00	1725.19	0.50	1709.99	4.0	1707.86	2.1	1715.80	1.5	1708.74	4.4	1713.02
02/18/18	0.18	1724.76	1.1	1709.54	0.00	NM	0.00	1724.07	0.00	1725.22	0.50	1709.98	4.0	1707.89	2.0	1715.87	1.5	1708.51	4.5	1713.04
02/19/18 ⁴	0.19	1724.72	1.1	1709.48	0.00	NM	0.00	1723.98	0.00	1725.20	0.56	1709.96	3.9	1707.84	2.0	1715.98	1.4	1708.51	4.4	1713.02
02/20/18	0.18	1724.71	1.1	1709.39	0.00	NM	0.00	1723.95	0.00	1725.18	0.49	1709.96	4.0	1707.82	2.0	1716.29	1.4	1708.54	4.4	1713.04
02/21/18	0.18	1724.70	1.1	1709.66	0.00	NM	0.00	1723.96	0.00	1725.19	0.50	1709.97	4.0	1707.79	1.9	1716.87	1.4	1708.51	4.4	1713.06
02/22/18	0.18	1724.71	1.1	1709.59	0.00	NM	0.00	1723.99	0.00	1725.20	0.49	1709.95	4.0	1707.80	1.9	1717.12	1.4	1708.51	4.4	1713.07
02/23/18	0.18	1724.69	1.1	1709.45	0.00	NM	0.00	1723.93	0.00	1725.18	0.50	1709.97	4.0	1707.87	1.9	1717.21	1.5	1708.51	4.4	1713.06
02/24/18	0.18	1724.69	1.1	1709.56	0.00	NM	0.00	1723.96	0.00	1725.19	0.49	1709.96	4.0	1707.81	1.9	1717.49	1.5	1708.51	4.4	1713.08
02/25/18	0.18	1724.68	1.1	1709.18	0.00	NM	0.00	1723.97	0.00	1725.19	0.50	1709.94	4.0	1707.85	1.9	1717.47	1.5	1708.52	4.5	1713.10
02/26/18 ⁵	0.18	1724.70	1.1	1709.12	0.00	NM	0.00	1724.04	0.00	1725.22	0.42	1709.98	3.9	1707.90	2.0	1714.62	1.5	1708.50	4.4	1713.11
02/27/18	0.18	1724.70	1.1	1709.22	0.00	NM	0.00	1724.00	0.00	1725.21	0.50	1709.96	4.0	1707.83	2.0	1716.40	1.4	1708.77	4.4	1713.11
02/28/18	0.17	1724.68	1.1	1710.48	0.00	NM	0.00	1723.98	0.00	1725.20	0.49	1709.97	3.9	1707.85	1.8	1717.10	1.4	1708.51	4.4	1713.11
Monthly Average	0.18	1724.88	1.1	1708.25	0.00	NM	0.00	1723.98	0.00	1725.18	0.50	1709.97	4.0	1707.87	1.7	1718.57	1.4	1709.17	4.4	1712.87
Analytical ⁶	Conc (mg/L)	Date	Conc (mg/L)	Date	Conc (mg/L)	Date	Conc (mg/L)	Date	Conc (mg/L)	Date	Conc (mg/L)	Date	Conc (mg/L)	Date	Conc (mg/L)	Date	Conc (mg/L)	Date	Conc (mg/L)	Date
Perchlorate	1.500	2/14/2018	72	2/14/2018	NM	NM	240	2/8/2018	150	2/8/2018	330	2/14/2018	585	2/13/2018	520	2/13/2018	440	2/13/2018	580	2/13/2018
Hexavalent Chromium	0.21	2/14/2018	0.058	2/14/2018	NM	NM	2.3	2/8/2018	0.85	2/8/2018	0.065	2/14/2018	2.2	2/13/2018	4.8	2/13/2018	6.3	2/13/2018	11	2/13/2018
Total Chromium	0.99	2/14/2018	0.064	2/14/2018	NM	NM	2.3	2/8/2018	1.0	2/8/2018	0.26	2/14/2018	2.3	2/13/2018	5.3	2/13/2018	7.2	2/13/2018	14	2/13/2018

Notes:
 Flow reported as gpm is a daily average calculated from the totalizer reading.
 NM = No measurements
 1: Analytical results are reported from TestAmerica.
 2: A "c" preceding the water elevation indicates the reported water level is below the transducer. Average monthly water elevation calculations include the transducer elevation in instances where the water level is below or above the transducer.
 3: On 02/05, 02/12, 02/19, and 02/26, the IWF totalizers were reset. Instantaneous flow rate at the time of the water level measurement was used for these dates.
 4: For February, all power to I-AB was disconnected due to heavy rain causing a 3-foot sinkhole around the well on 01/11.
 5: For February, I-AB was unable to be sampled due to heavy rain causing a 3-foot sinkhole around the well on 01/11.
 6: Duplicates taken on 02/13 for well I-C; average of both values is presented and used for calculation purposes.

Nevada Environmental Response Trust Groundwater Extraction and Treatment System Enhanced Operational Metrics																				
Date	I-G		I-H		I-I		I-J		I-K		I-L		I-M		I-N		I-O		I-P	
	Flow (gpm)	Water Elevation (ft amsl)	Flow (gpm)	Water Elevation (ft amsl)	Flow (gpm)	Water Elevation (ft amsl)	Flow (gpm)	Water Elevation (ft amsl)	Flow (gpm)	Water Elevation (ft amsl)	Flow (gpm)	Water Elevation (ft amsl)	Flow (gpm)	Water Elevation (ft amsl)	Flow (gpm)	Water Elevation (ft amsl)	Flow (gpm)	Water Elevation (ft amsl)	Flow (gpm)	Water Elevation (ft amsl)
02/01/18	0.12	1714.30	1.1	1719.98	5.1	1721.82	6.7	1707.07	3.0	1715.97	1.5	1711.41	1.5	1719.62	3.7	1717.73	0.89	1721.73	2.0	1721.11
02/02/18	0.11	1714.53	1.1	1720.05	5.1	1721.84	6.7	1707.08	3.0	1715.99	1.5	1711.41	1.5	1719.69	3.6	1717.88	0.89	1721.76	1.9	1721.15
02/03/18	0.11	1714.91	1.1	1720.12	5.2	1721.85	6.7	1707.08	2.9	1716.28	1.5	1711.43	1.5	1719.74	3.6	1718.00	0.88	1721.79	1.9	1721.19
02/04/18	0.12	1714.26	1.1	1720.14	5.2	1721.87	6.8	1707.08	2.9	1716.34	1.5	1711.42	1.5	1719.56	3.7	1718.08	0.88	1721.81	1.9	1721.21
02/05/18 ¹	0.21	1714.82	1.1	1720.22	5.1	1721.90	6.6	1707.08	3.0	1716.25	1.5	1711.42	1.5	1719.68	3.7	1718.16	0.87	1721.85	1.9	1721.25
02/06/18	0.11	1716.57	1.1	1720.24	5.1	1721.87	6.7	1707.07	3.0	1716.18	1.5	1711.45	1.5	1720.04	3.7	1718.20	0.87	1721.84	1.9	1721.26
02/07/18	0.11	1716.64	1.1	1720.27	5.1	1721.89	6.7	1707.08	3.0	1716.19	1.5	1711.41	1.5	1720.02	3.7	1718.24	0.86	1721.86	1.9	1721.28
02/08/18	0.11	1716.90	1.1	1720.35	5.2	1721.93	6.7	1707.04	3.0	1716.24	1.5	1711.43	1.5	1720.06	3.7	1718.30	0.86	1721.89	1.9	1721.33
02/09/18	0.11	1716.05	1.1	1720.41	5.2	1721.96	6.8	1707.04	3.0	1716.26	1.5	1711.44	1.5	1720.04	3.6	1718.34	0.86	1721.92	1.9	1721.37
02/10/18	0.11	1716.58	1.1	1720.40	5.2	1721.93	6.8	1707.04	3.0	1716.19	1.5	1711.45	1.5	1719.74	3.6	1718.35	0.86	1721.91	1.9	1721.37
02/11/18	0.12	1716.61	1.1	1720.47	5.2	1721.99	6.8	1707.04	3.0	1716.28	1.5	1711.48	1.5	1719.93	3.7	1718.39	0.86	1721.96	1.9	1721.43
02/12/18 ³	0.22	1716.80	1.1	1720.45	5.1	1721.96	6.8	1707.04	3.0	1716.18	1.4	1711.41	1.5	1720.19	3.7	1718.40	0.86	1721.94	1.9	1721.41
02/13/18	0.12	1716.92	1.1	1720.45	5.1	1721.96	6.7	1707.04	3.0	1716.14	1.5	1711.48	1.5	1720.18	3.7	1718.42	0.85	1721.95	1.9	1721.44
02/14/18	0.12	1717.18	1.0	1720.50	5.1	1721.99	6.8	1707.04	3.0	1716.19	1.5	1711.42	1.4	1720.10	3.7	1718.43	0.85	1721.98	1.8	1721.48
02/15/18	0.12	1717.39	1.0	1720.48	5.2	1721.96	6.8	1707.04	3.0	1716.24	1.5	1711.43	1.7	1720.14	3.7	1718.43	0.85	1721.95	1.9	1721.45
02/16/18	0.12	1717.23	1.0	1720.51	5.2	1721.98	6.8	1707.04	3.0	1716.23	1.5	1711.42	2.0	1720.21	3.7	1718.43	0.85	1721.97	1.9	1721.47
02/17/18	0.12	1717.09	1.0	1720.55	5.2	1722.00	6.8	1707.04	3.0	1716.28	1.5	1711.46	1.9	1720.08	3.7	1718.44	0.84	1722.00	1.8	1721.51
02/18/18	0.11	1717.89	1.1	1720.60	5.2	1722.03	6.8	1707.05	3.0	1716.34	1.5	1711.49	1.9	1719.37	3.7	1718.47	0.85	1722.03	1.8	1721.56
02/19/18 ³	0.20	1718.02	1.0	1720.56	5.1	1721.99	6.7	1707.04	3.0	1716.31	1.6	1711.41	1.7	1719.45	3.6	1718.50	0.90	1721.98	1.8	1721.54
02/20/18	0.11	1718.01	1.0	1720.57	5.1	1721.99	6.8	1707.04	3.0	1716.28	1.5	1711.45	1.7	1719.49	3.5	1718.52	0.91	1721.98	1.8	1721.54
02/21/18	0.11	1718.00	1.0	1720.60	5.1	1722.00	6.8	1707.04	3.0	1716.30	1.5	1711.45	1.7	1719.49	3.6	1718.51	0.91	1722.00	1.8	1721.55
02/22/18	0.11	1718.01	1.0	1720.63	5.2	1722.03	6.8	1707.04	3.0	1716.35	1.5	1711.42	1.7	1719.47	3.5	1718.52	0.91	1722.02	1.8	1721.58
02/23/18	0.11	1717.93	1.0	1720.76	5.2	1722.00	6.8	1707.04	3.0	1716.23	1.5	1711.42	1.6	1719.63	3.5	1718.50	0.93	1721.99	1.8	1721.57
02/24/18	0.10	1717.98	0.93	1720.78	5.1	1722.02	6.8	1707.04	3.0	1716.25	1.5	1711.45	1.6	1719.49	3.5	1718.50	0.94	1722.01	1.8	1721.59
02/25/18	0.10	1718.78	0.97	1720.79	5.2	1722.03	6.8	1707.04	3.0	1716.29	1.5	1711.48	1.6	1719.62	3.5	1718.52	0.94	1722.02	1.8	1721.60
02/26/18 ³	0.18	1718.91	0.96	1720.83	5.1	1722.07	6.9	1707.05	3.0	1716.35	1.4	1711.45	2.0	1719.65	3.5	1718.52	0.94	1722.05	1.8	1721.63
02/27/18	0.10	1719.18	0.97	1720.81	5.1	1722.04	6.8	1707.04	3.0	1716.28	1.5	1711.43	1.9	1718.94	3.5	1718.50	0.92	1722.06	1.8	1721.63
02/28/18	0.11	1718.74	0.97	1720.83	5.1	1722.04	6.8	1707.04	3.0	1716.24	1.5	1711.43	1.8	1719.22	3.6	1718.48	0.91	1722.06	1.8	1721.64
Monthly Average	0.13	1717.01	1.0	1720.48	5.1	1721.96	6.8	1707.05	3.0	1716.24	1.5	1711.44	1.6	1719.74	3.6	1718.35	0.88	1721.94	1.9	1721.43
Analytical ¹	Conc (mg/L)	Date	Conc (mg/L)	Date	Conc (mg/L)	Date	Conc (mg/L)	Date	Conc (mg/L)	Date	Conc (mg/L)	Date	Conc (mg/L)	Date	Conc (mg/L)	Date	Conc (mg/L)	Date	Conc (mg/L)	Date
Perchlorate	1,300	2/13/2018	1,000	2/13/2018	840	2/8/2018	330	2/8/2018	240	2/8/2018	530	2/14/2018	640	2/13/2018	440	2/13/2018	780	2/13/2018	890	2/13/2018
Hexavalent Chromium	19	2/13/2018	14	2/13/2018	11	2/8/2018	3.9	2/8/2018	2.3	2/8/2018	0.67	2/14/2018	6.2	2/13/2018	6.3	2/13/2018	16	2/13/2018	15	2/13/2018
Total Chromium	23	2/13/2018	17	2/13/2018	13	2/8/2018	4.1	2/8/2018	2.2	2/8/2018	0.67	2/14/2018	6.4	2/13/2018	6.9	2/13/2018	21	2/13/2018	17	2/13/2018

Notes:
 Flow reported as gpm is a daily average calculated from the totalizer reading.
 1: Analytical results are reported from TestAmerica.
 2: A "c" preceding the water elevation indicates the reported water level is below the transducer. Average monthly water elevation calculations include the transducer elevation in instances where the water level is below or above the transducer.
 3: On 02/05, 02/12, 02/19, and 02/26, the IWF totalizers were reset. Instantaneous flow rate at the time of the water level measurement was used for these dates.
 7: On 02/15, I-M and I-W adjusted to meet flow target as directed by the Trust.

Table 3 - Interceptor Well Field (IWF) Operational Metrics

Nevada Environmental Response Trust Groundwater Extraction and Treatment System Enhanced Operational Metrics																				
Date	I-Q		I-R		I-S		I-T		I-U		I-V		I-W		I-X		I-Y		I-Z	
	Flow ⁸ (gpm)	Water Elevation (ft amsl)	Flow (gpm)	Water Elevation (ft amsl)	Flow (gpm)	Water Elevation (ft amsl)	Flow (gpm)	Water Elevation (ft amsl)	Flow (gpm)	Water Elevation (ft amsl)	Flow (gpm)	Water Elevation (ft amsl)	Flow (gpm)	Water Elevation (ft amsl)	Flow (gpm)	Water Elevation (ft amsl)	Flow ⁸ (gpm)	Water Elevation (ft amsl)	Flow (gpm)	Water Elevation ² (ft amsl)
02/01/18	0.24	1718.80	1.5	1714.00	2.8	1711.02	0.33	1713.47	0.80	1710.53	4.3	1719.59	0.35	1720.89	4.1	1704.17	1.4	1707.09	8.1	< 1707.89
02/02/18	0.25	1718.89	1.5	1713.98	2.8	1711.02	0.32	1713.53	0.79	1710.69	4.3	1719.62	0.31	1720.91	4.1	1704.28	1.4	1707.48	8.1	< 1707.89
02/03/18	0.19	1718.69	1.4	1715.34	2.8	1711.02	0.32	1713.53	0.79	1710.65	4.4	1719.65	0.32	1720.90	4.1	1704.23	1.4	1707.90	8.1	< 1707.89
02/04/18	0.18	1718.87	1.3	1715.36	2.8	1711.02	0.32	1713.58	0.78	1711.14	4.4	1719.68	0.32	1720.94	4.2	1704.50	1.4	1708.74	8.0	< 1707.89
02/05/18 ⁸	0.17	1718.78	1.3	1715.24	2.8	1711.02	0.33	1713.63	0.78	1711.23	4.4	1719.72	0.33	1720.97	4.2	1710.86	1.4	1709.33	7.9	< 1707.89
02/06/18	0.16	1719.27	1.4	1714.00	2.8	1711.02	0.32	1713.67	0.76	1711.38	4.3	1719.70	0.32	1720.97	4.1	1711.31	1.4	1708.42	8.1	< 1707.89
02/07/18	0.15	1719.32	1.5	1714.01	2.7	1711.02	0.32	1713.68	0.76	1711.47	4.3	1719.72	0.32	1720.99	4.2	1711.63	1.4	1708.05	8.1	< 1707.89
02/08/18	0.15	1719.33	1.5	1714.11	2.7	1711.02	0.32	1713.74	0.76	1711.54	4.3	1719.77	0.30	1721.04	4.1	1711.97	1.4	1706.65	8.2	< 1707.89
02/09/18	0.26	1719.35	1.5	1714.10	2.7	1711.02	0.32	1713.79	0.76	1711.75	4.3	1719.82	0.32	1721.03	4.1	1712.14	1.5	1706.15	8.2	< 1707.89
02/10/18	0.32	1719.77	1.5	1714.04	2.7	1711.03	0.32	1713.74	0.76	1711.70	4.4	1719.79	0.33	1720.99	4.1	1712.23	1.4	1705.92	8.1	< 1707.89
02/11/18	0.33	1719.92	1.5	1713.96	2.7	1711.04	0.32	1713.85	0.76	1711.89	4.5	1719.88	0.36	1720.99	4.2	1712.39	1.4	1706.89	8.0	< 1707.89
02/12/18 ⁸	0.32	1718.43	1.6	1713.16	2.7	1711.03	0.32	1713.81	0.76	1711.62	4.4	1719.84	0.38	1720.95	4.2	1712.39	1.5	1706.21	8.0	< 1707.89
02/13/18	0.33	1718.34	1.5	1713.41	2.7	1711.02	0.33	1713.83	0.76	1712.01	4.3	1719.84	0.38	1720.94	4.2	1712.49	1.4	1708.30	8.1	< 1707.89
02/14/18	0.32	1718.49	1.4	1714.66	2.7	1711.02	0.34	1713.71	0.75	1711.71	4.3	1719.88	0.38	1720.98	4.2	1712.58	1.4	1708.33	8.1	< 1707.89
02/15/18	0.32	1718.41	1.4	1714.55	2.7	1711.02	0.33	1713.71	0.76	1711.78	4.3	1719.84	0.44	1720.68	4.1	1712.59	1.4	1708.30	8.2	< 1707.89
02/16/18	0.30	1718.36	1.4	1715.08	2.7	1711.02	0.34	1713.75	0.76	1711.91	4.3	1719.87	0.47	1720.81	4.1	1712.63	1.4	1709.35	8.2	< 1707.89
02/17/18	0.30	1718.61	1.3	1715.22	2.7	1711.02	0.34	1713.82	0.76	1711.95	4.4	1719.91	0.43	1720.90	4.1	1712.67	1.4	1708.36	8.2	< 1707.89
02/18/18	0.34	1718.49	1.3	1715.09	2.7	1711.02	0.34	1713.87	0.76	1712.03	4.5	1719.95	0.41	1720.97	4.2	1712.68	1.4	1707.87	8.1	< 1707.89
02/19/18 ⁸	0.35	1718.42	1.3	1714.99	2.6	1711.02	0.34	1713.82	0.76	1711.87	4.4	1719.90	0.39	1720.96	4.2	1712.64	1.4	1708.42	8.3	< 1707.89
02/20/18	0.34	1718.37	1.3	1714.92	2.6	1711.02	0.33	1713.85	0.76	1711.83	4.3	1719.90	0.39	1720.99	4.2	1712.69	1.4	1708.60	8.1	< 1707.89
02/21/18	0.34	1718.36	1.3	1714.95	2.6	1711.02	0.33	1713.88	0.74	1712.26	4.3	1719.91	0.38	1721.02	4.2	1712.70	1.4	1708.51	8.1	< 1707.89
02/22/18	0.33	1718.36	1.3	1715.04	2.6	1711.02	0.33	1713.91	0.74	1712.30	4.3	1719.95	0.37	1721.07	4.1	1712.76	1.4	1709.19	8.2	< 1707.89
02/23/18	0.33	1718.39	1.3	1715.14	2.6	1711.02	0.33	1713.86	0.75	1712.09	4.4	1719.90	0.36	1721.06	4.1	1712.72	1.4	1709.09	8.2	< 1707.89
02/24/18	0.28	1718.43	1.3	1715.13	2.6	1711.02	0.34	1713.90	0.76	1712.11	4.4	1719.93	0.36	1721.10	4.1	1712.70	1.4	1709.82	8.1	< 1707.89
02/25/18	0.28	1718.83	1.3	1715.13	2.6	1711.02	0.34	1713.92	0.76	1712.20	4.5	1719.96	0.35	1721.12	4.2	1712.75	1.4	1709.68	8.0	< 1707.89
02/26/18 ⁸	0.22	1718.83	1.3	1715.19	2.5	1711.03	0.33	1713.94	0.76	1711.75	4.4	1720.00	0.34	1721.16	4.2	1712.76	1.4	1709.62	8.1	< 1707.89
02/27/18	0.21	1719.31	1.3	1715.09	2.6	1711.03	0.34	1713.94	0.76	1711.99	4.3	1719.98	0.34	1721.16	4.2	1712.74	1.4	1709.34	8.2	< 1707.89
02/28/18	0.20	1719.29	1.3	1715.19	2.6	1711.02	0.34	1713.87	0.76	1712.02	4.3	1719.99	0.34	1721.17	4.2	1712.72	1.4	1709.85	8.1	< 1707.89
Monthly Average	0.27	1718.81	1.4	1714.65	2.7	1711.02	0.33	1713.77	0.76	1711.70	4.4	1719.84	0.36	1720.99	4.1	1711.25	1.4	1708.27	8.1	< 1707.89
Analytical ¹	Conc (mg/L)	Date	Conc (mg/L)	Date	Conc (mg/L)	Date	Conc (mg/L)	Date	Conc (mg/L)	Date	Conc (mg/L)	Date	Conc (mg/L)	Date	Conc (mg/L)	Date	Conc (mg/L)	Date	Conc (mg/L)	Date
Perchlorate	850	2/13/2018	830	2/14/2018	540	2/14/2018	1,400	2/13/2018	1,400	2/13/2018	910	2/8/2018	800	2/13/2018	750	2/13/2018	920	2/14/2018	430	2/8/2018
Hexavalent Chromium	15	2/13/2018	0.30	2/14/2018	0.96	2/14/2018	19	2/13/2018	18	2/13/2018	15	2/8/2018	17	2/13/2018	9.0	2/13/2018	0.51	2/14/2018	8.9	2/8/2018
Total Chromium	18	2/13/2018	0.36	2/14/2018	0.94	2/14/2018	23	2/13/2018	25	2/13/2018	17	2/8/2018	22	2/13/2018	10	2/13/2018	0.54	2/14/2018	9.6	2/8/2018

Notes:
 Flow reported as gpm is a daily average calculated from the totalizer reading.
 1: Analytical results are reported from TestAmerica.
 2: A "<" preceding the water elevation indicates the reported water level is below the transducer. Average monthly water elevation calculations include the transducer elevation in instances where the water level is below or above the transducer.
 3: On 02/05, 02/12, 02/19, and 02/26, the IWF totalizers were reset. Instantaneous flow rate at the time of the water level measurement was used for these dates.
 7: On 02/15, I-M and I-W adjusted to meet flow target as directed by the Trust.
 8: On 02/01, I-Q and I-Y adjusted to meet flow target as directed by the Trust.
 9: On 02/09, I-Q adjusted to meet flow target as directed by the Trust.

Table 4 - Treatment Plant Operational Metrics

Nevada Environmental Response Trust Groundwater Extraction and Treatment System Enhanced Operational Metrics																
Date	LS #2	GWTP Effluent ¹				GW-11 Influent ¹				FBR Plant Influent ¹						
	Flow (gpm)	Flow (gpm)	TA - Cr (TR) (mg/L)	TA - Cr (VI) (mg/L)	TA - ClO ₂ (mg/L)	Flow ⁴ (gpm)	TA - Cr (TR) (mg/L)	TA - Cr (VI) (mg/L)	TA - ClO ₂ (mg/L)	Flow ^{4 5} (gpm)	TA - ClO ₂ (mg/L)	ETI - ClO ₂ (mg/L)	TA - ClO ₃ (mg/L)	TA - NO ₃ - N (mg/L)	TA - Cr (TR) (mg/L)	TA - Cr (VI) (mg/L)
02/01/18	949	82	0.56	ND	610	0.00				1,049		147				
02/02/18	948	82				0.00				1,080		228				
02/03/18	947	81				0.00				1,067	250	233				
02/04/18	947	81				0.00				1,042		233				
02/05/18 ³	848	81				0.00				951		233	150	13	0.048	ND
02/06/18	953	82				0.00				1,044		263				
02/07/18	961	81	0.52	ND	620	0.00				1,055		234				
02/08/18	962	81				0.00				1,058		267				
02/09/18	970	81				0.00				1,067		376				
02/10/18	963	80				0.00				1,062	240	173				
02/11/18	965	81				0.00				1,065		164				
02/12/18 ³	862	83				0.00				945		263		13	0.079	0.034
02/13/18	967	82				2.4	0.075	0.065	36	1,050		273				
02/14/18	967	83	0.16	ND	740	0.00				1,051		304				
02/15/18	968	83				0.00				1,060		260				
02/16/18	975	83				0.00				1,068		297				
02/17/18	970	83				0.00				1,077	300	297				
02/18/18	970	83				0.00				1,082		276				
02/19/18 ³	928	82				0.00				1,010		321				
02/20/18	972	81				0.00				1,069		270	14	0.055 B	0.041	
02/21/18	970	81	0.33	ND	580	0.00				1,058		311				
02/22/18	972	81				0.00				1,065		278				
02/23/18	980	81				0.00				1,079		264				
02/24/18	987	81				0.00				1,077	280	219				
02/25/18	1,007	80				0.00				1,087		216				
02/26/18 ³	961	81				0.00				1,049		236		13	0.056	ND
02/27/18	1,037	81				0.00				1,118		216				
02/28/18	1,043	81	0.11	ND	650	0.00				1,124		250				
Monthly Average ²	963	81	0.33	ND	644	0.085	0.075	0.065	36	1,057	269	254	150	13	0.059	0.019

Notes:

Flow reported as gpm is a daily average calculated from the totalizer reading.

ND = Not detected above laboratory method detection limit (ClO₂ = 0.5 ug/L; ClO₃ = 10 ug/L; NO₃-N= 0.055 mg/L, Cr(VI) = 0.25 ug/L).

B = Compound was found in the blank and sample.

1: ETI = Envirogen internal process control data, TA = TestAmerica data.

2: All average concentrations reported are monthly flow weighted averages.

3: On 02/05, 02/12, 02/19, and 02/26, LS #2 totalizer was reset. Instantaneous flow rate at the time of the water level measurement was used for these dates.

4: Flows bypassed GW-11 Influent and FBR Plant Influent totalizers from 02/01 to 02/28 due to FBR plant influent strainers clogging, except for monthly sampling.

5: From 02/01 to 02/28, the FBR Plant Influent Flow was estimated by summing flows for LS #2, GWTP Effluent, and GW-11 Effluent.

Nevada Environmental Response Trust Groundwater Extraction and Treatment System Enhanced Operational Metrics														
Date	1st Stage FBR ⁶			2nd Stage FBR ⁶			FBR Plant Effluent ⁷							
	Flow (gpm)	pH (s.u.)	ORP (mV)	Flow (gpm)	pH (s.u.)	ORP (mV)	Flow ⁷ (gpm)	TA - ClO ₄ (mg/L)	ETI - ClO ₄ (mg/L)	TA - ClO ₃ (mg/L)	TA - Cr (TR) (mg/L)	TA - Cr (VI) (mg/L)	TA - NO ₃ - N (mg/L)	ETI - Turbidity (NTU)
02/01/18	1,218	6.6	-373	940	6.6	-354	1,052		ND					4
02/02/18	1,202	6.6	-388	950	6.6	-358	1,117		ND					17
02/03/18	1,181	6.6	-279	959	6.6	-361	1,107	ND						17
02/04/18	1,139	6.6	-337	931	6.6	-354	1,085		ND					22
02/05/18	1,177	6.6	-372	889	6.5	-354	1,076		ND	0.046	0.0074	ND	ND	17
02/06/18	1,137	6.6	-367	827	6.5	-356	1,074		ND					9
02/07/18	1,185	6.6	-381	941	6.5	-362	1,085		ND					8
02/08/18	1,178	6.6	-394	935	6.5	-361	1,096		ND					7
02/09/18	1,187	6.6	-388	903	6.5	-349	1,097		ND					6
02/10/18	1,177	6.6	-394	960	6.6	-362	1,104	ND						5
02/11/18	1,170	6.6	-335	962	6.5	-353	1,101		ND					8
02/12/18	1,177	6.5	-232	906	6.5	-348	1,074		ND		0.0059	ND	ND	8
02/13/18	1,178	6.5	-258	905	6.5	-353	1,088		ND					7
02/14/18	1,183	6.6	-276	924	6.5	-348	1,085		ND					8
02/15/18	1,198	6.6	-362	975	6.5	-352	1,113		ND					11
02/16/18	1,194	6.6	-373	954	6.5	-355	1,118		ND					9
02/17/18	1,204	6.6	-381	980	6.5	-358	1,116	ND						14
02/18/18	1,187	6.6	-366	937	6.6	-362	1,113		ND					15
02/19/18	1,183	6.5	-325	957	6.5	-354	1,064		ND		0.017 B	ND	ND	13
02/20/18	1,189	6.6	-327	992	6.5	-354	1,107		ND					5
02/21/18	1,186	6.6	-367	963	6.5	-357	1,097		ND					10
02/22/18	1,204	6.6	-379	984	6.6	-361	1,105		ND					7
02/23/18	1,216	6.6	-380	979	6.6	-360	1,116		ND					8
02/24/18	1,209	6.7	-383	972	6.6	-360	1,112	ND						9
02/25/18	1,201	6.7	-345	999	6.6	-345	1,111		ND					9
02/26/18	1,192	6.6	-359	940	6.6	-344	1,061		ND		0.0073	ND	ND	9
02/27/18	1,167	6.6	-383	905	6.6	-350	1,092		ND					13
02/28/18	1,168	6.6	-382	951	6.6	-359	1,051		ND					20
Monthly Average ²	1185	6.6	-353	944	6.6	-355	1,093	ND	ND	0.046	0.0094	ND	ND	11

Notes:

Flow reported as gpm is a daily average calculated from the totalizer reading.

ND = Not detected above laboratory method detection limit (ClO₄ = 0.5 ug/L; ClO₃ = 10 ug/L; NO₃-N= 0.055 mg/L, Cr(VI) = 0.25 ug/L).

B = Compound was found in the blank and sample.

1: ETI = Envirogen internal process control data, TA = TestAmerica data.

2: All average concentrations reported are monthly flow weighted averages.

6: For 1st and 2nd stage FBRs, flow measurements are collected from the influent lines and pH and ORP samples are collected from the recycle lines.

7: FBR Plant Effluent represents effluent discharged to Las Vegas Wash. While this may represent the entirety of the FBR Plant effluent, any diversions to GW-11 are subtracted from the original effluent flow.

GW-11 Level Monitoring		
Date	Field Measurement (ft)	Volume (MG)
02/13/18	30.8	35.6
02/28/18	30.8	35.6

GW-11 Leak Detection Monitoring				
Date	Amount Pumped ¹ (gallons)			
	NW Corner	NE Corner	SW Corner	SE Corner
02/13/18	0	6,614	0	0
02/27/18	0	6,453	0	0

GW-11 Composite Sample ^{2 3}		
Analytes	Concentration	Units
Perchlorate	10	mg/L
Chlorate	12	mg/L
Ammonia as N	3.3	mg/L
Total Phosphorus	0.066	mg/L
Total Dissolved Solids (TDS)	9,250	mg/L
Total Suspended Solids (TSS)	21	mg/L
pH	8.4	s.u.
Calcium	450	mg/L
Iron	0.30	mg/L
Chromium (total)	0.017	mg/L
Chromium VI	ND	mg/L
Chloride	3,225	mg/L
Nitrate as N	ND	mg/L
Sulfate	2,625	mg/L

Notes:

ND = Not detected above laboratory method detection limit (NH₃-N= 0.1 mg/L; Total P = 0.025 ug/L; Cr(VI) = 0.25 ug/L).

1: Pumping occurs over three consecutive days. The total amount pumped over the three day period is listed with the last day pumping occurred.

2: GW-11 Corner Composite Sample collected quarterly, most recent sampling results presented. Sampled on: November 15, 2017 by Envirogen. Next sample: March 2018.

3: The laboratory inadvertently ran each corner sample separately rather than as a composite sample. The average of the four results are presented for each analyte.

Nevada Environmental Response Trust Groundwater Extraction and Treatment System Enhanced Operational Metrics						
Date	Flow ¹ (gpm)	FBR Influent Concentration			Influent Function Load ² (lbs/day)	6 Month Rolling Average (lbs/day)
		ClO ₄ ³ (mg/L)	NO ₃ as N (mg/L)	ClO ₃ (mg/L)		
Mar 2017	951	99	12	180	672	621
Apr 2017	1,066	87	13	190	759	652
May 2017	1,102	88	12	190	773	702
June 2017	1,047	95	12	170	720	716
July 2017	1,058	118	12	170	777	733
Aug 2017	1,072	124	9.8	170	773	746
Sep 2017	1,070	114	11	190	806	768
Oct 2017	1,060	180	11	130	821	778
Nov 2017	1,042	279	11	130	1,030	821
Dec 2017	1,070	259	12	150	1,072	880
Jan 2018	1,031	249	13	150	1,021	920
Feb 2018	1,057	269	13	150	1,090	973

Notes:

Concentrations and flow are presented as monthly average.

1: Flow used in loading calculation is average monthly FBR effluent flow to be consistent with historical loading calculations.

2: FBR loading calculated as $[(0.9 \cdot \text{NO}_3 \text{ as N} + 0.17 \cdot \text{ClO}_3 + 0.18 \cdot \text{ClO}_4) \cdot \text{Flow} \cdot 1440 / 1000000 \cdot 8.34]$.

3: Treatment of AP-5 wash water began on July 17, 2017 and was suspended on August 4, 2017 to allow Envirogen to evaluate internal process controls to meet discharge limits. Treatment of AP-5 wash water resumed on August 31, 2017.

Table 7 - AP Area Operational Metrics

Nevada Environmental Response Trust Groundwater Extraction and Treatment System Enhanced Operational Metrics																
Date	E1-1				E1-2				E1-3				E2-1			
	Flow (gpm)	Water Elevation (ft amsl)	Cr (VI) ¹ (mg/L)	ClO ₂ ¹ (mg/L)	Flow (gpm)	Water Elevation (ft amsl)	Cr (VI) ¹ (mg/L)	ClO ₂ ¹ (mg/L)	Flow (gpm)	Water Elevation (ft amsl)	Cr (VI) ^{1,4} (mg/L)	ClO ₂ ^{1,4} (mg/L)	Flow (gpm)	Water Elevation (ft amsl)	Cr (VI) ¹ (mg/L)	ClO ₂ ¹ (mg/L)
02/01/18	1.9	1,722.02			1.3	1,711.34			0.76	1,711.31			1.4	1,713.96		
02/02/18	2.0	1,722.03			1.4	1,712.49			0.87	1,717.47			1.4	1,714.54		
02/03/18	2.0				1.4				0.87				1.4			
02/04/18	2.0				1.4				0.87				1.4			
02/05/18	1.7	1,721.83			1.4	1,710.96			0.83	1,713.16			1.2	1,718.26		
02/06/18	1.9	1,722.05			1.3	1,710.48			0.82	1,714.15			1.2	1,715.44		
02/07/18	2.1	1,721.86			1.5	1,711.28			0.94	1,714.92			1.3	1,715.62		
02/08/18	1.8	1,721.76			1.1	1,709.91			0.76	1,710.96			1.1	1,714.72		
02/09/18	2.1	1,721.83			1.3	1,714.58			0.88	1,715.84			1.3	1,714.44		
02/10/18	2.1				1.3				0.88				1.3			
02/11/18	2.1				1.3				0.88				1.3			
02/12/18 ³	1.4	1,722.71			0.91	1,714.96			0.66	1,716.47			0.91	1,723.62		
02/13/18	1.9	1,721.88			1.2	1,715.16			0.85	1,716.92			1.2	1,717.92		
02/14/18	1.9	1,721.85			1.3	1,712.85			0.87	1,715.05			1.2	1,712.74		
02/15/18	1.9	1,721.87			1.3	1,710.37			0.86	1,712.94			1.2	1,713.12		
02/16/18	2.0	1,721.80			1.4	1,711.60			0.90	1,714.92			1.2	1,714.33		
02/17/18	2.0				1.4				0.90				1.2			
02/18/18	2.0				1.4				0.90				1.2			
02/19/18	1.7	1,721.63	0.030	580	1.2	1,710.63	0.061	2,000	0.79	1,713.71	0.15	960	1.1	1,717.65	0.029	230
02/20/18	2.3	1,722.02			1.4	1,716.22			0.98	1,715.50			1.3	1,715.09		
02/21/18	1.9	1,721.46			1.2	1,712.10			0.82	1,711.93			1.1	1,714.47		
02/22/18	2.3	1,721.47			1.4	1,712.51			0.98	1,712.92			1.4	1,714.16		
02/23/18	2.0	1,722.23			1.2	1,711.61			0.87	1,712.83			1.2	1,712.07		
02/24/18	2.0				1.2				0.87				1.2			
02/25/18	2.0				1.2				0.87				1.2			
02/26/18	2.1	1,721.31			1.2	1,711.88			0.89	1,710.96			1.1	1,713.15		
02/27/18	2.2	1,721.39			1.3	1,712.22			0.93	1,711.23			1.1	1,717.29		
02/28/18	2.4	1,721.23			1.4	1,711.20			1.0	1,710.95			1.3	1,715.12		
Monthly Average ⁵	2.0	1721.81	0.030	580	1.3	1712.22	0.061	2,000	0.87	1713.71	0.15	960	1.2	1715.38	0.029	230

Notes:

Flow reported as gpm is a daily average calculated from the totalizer reading. *Italicized* flow rates indicate a totalizer reading was not recorded that day.

1: Analytical results are reported from TestAmerica.

2: All average concentrations reported are monthly flow weighted averages.

3: On 02/12, all extraction wells were off from 9:00 am to 4:00 pm in order to accommodate the transfer of extracted groundwater associated with VER Treatability Study to the chromium treatment plant.

4: Duplicates taken on 02/19 for well E1-3; average of both values is presented for calculation purposes.

5: Starting February 2018, AP Area wells will be sampled monthly due to the close of the Treatability Study. Starting March 30th, AP Area well operation and maintenance will be transferred to ETI.

ETI will perform the monthly sampling starting in April 2018 and will report the results as part of their monthly Interceptor Well Field reporting.

Nevada Environmental Response Trust Groundwater Extraction and Treatment System Enhanced Operational Metrics																
Date	E2-2				E2-3				E2-4				E2-5			
	Flow (gpm)	Water Elevation (ft amsl)	Cr (VI) ¹ (mg/L)	ClO ₂ ¹ (mg/L)	Flow (gpm)	Water Elevation (ft amsl)	Cr (VI) ¹ (mg/L)	ClO ₂ ¹ (mg/L)	Flow (gpm)	Water Elevation (ft amsl)	Cr (VI) ¹ (mg/L)	ClO ₂ ¹ (mg/L)	Flow (gpm)	Water Elevation (ft amsl)	Cr (VI) ¹ (mg/L)	ClO ₂ ¹ (mg/L)
02/01/18	1.7	1,715.92			1.5	1,715.95			2.0	1,716.79			0.88	1,716.40		
02/02/18	1.7	1,716.86			1.9	1,720.55			2.1	1,718.23			0.88	1,716.57		
02/03/18	1.7				1.9				2.1				0.88			
02/04/18	1.7				1.9				2.1				0.88			
02/05/18	1.7	1,717.73			1.7	1,719.98			2.0	1,717.43			0.77	1,716.22		
02/06/18	1.7	1,714.40			1.8	1,717.55			2.0	1,715.68			0.86	1,718.72		
02/07/18	1.9	1,714.57			2.0	1,715.50			2.2	1,715.59			0.71	1,715.92		
02/08/18	1.6	1,714.21			1.6	1,715.10			1.8	1,715.01			0.72	1,721.87		
02/09/18	1.8	1,714.25			1.9	1,716.61			2.0	1,715.03			0.86	1,718.74		
02/10/18	1.8				1.9				2.0				0.86			
02/11/18	1.8				1.9				2.0				0.86			
02/12/18 ³	1.3	1,719.29			1.4	1,721.24			1.5	1,720.69			0.68	1,721.62		
02/13/18	1.6	1,716.60			1.8	1,715.16			1.9	1,714.36			0.86	1,715.88		
02/14/18	1.6	1,714.96			1.8	1,714.86			1.8	1,715.39			0.82	1,715.21		
02/15/18	1.7	1,714.50			1.3	1,714.61			1.9	1,716.44			0.80	1,716.34		
02/16/18	1.7	1,714.72			1.7	1,721.43			1.9	1,715.99			0.86	1,717.94		
02/17/18	1.7				1.7				1.9				0.86			
02/18/18	1.7				1.7				1.9				0.86			
02/19/18	1.4	1,715.96	0.020	520	1.8	1,718.14	0.013	640	1.8	1,718.65	0.018	1,000	0.80	1,723.06	0.032	1,600
02/20/18	1.7	1,716.24			2.0	1,714.77			2.1	1,713.11			0.97	1,715.42		
02/21/18	1.4	1,715.79			1.7	1,713.46			1.7	1,714.74			0.81	1,713.97		
02/22/18	1.7	1,716.17			2.0	1,713.84			2.1	1,714.74			0.97	1,715.02		
02/23/18	1.5	1,715.79			1.7	1,711.79			1.8	1,714.81			0.83	1,712.80		
02/24/18	1.5				1.7				1.8				0.83			
02/25/18	1.5				1.7				1.8				0.83			
02/26/18	1.5	1,715.49			1.7	1,713.48			1.7	1,714.63			0.85	1,713.73		
02/27/18	1.6	1,716.29			1.9	1,712.86			1.8	1,715.91			0.88	1,714.07		
02/28/18	1.9	1,715.64			1.6	1,710.15			2.1	1,716.16			0.84	1,710.62		
Monthly Average ²	1.7	1,715.77	0.020	520	1.8	1,715.85	0.013	640	1.9	1,715.97	0.018	1,000	0.84	1,716.50	0.032	1,600

Notes:

Flow reported as gpm is a daily average calculated from the totalizer reading.

1: Analytical results are reported from TestAmerica.

2: All average concentrations reported are monthly flow weighted averages.

3: On 02/12, all extraction wells were off from 9:00 am to 4:00 pm in order to accommodate the transfer of extracted groundwater associated with VER Treatability Study to the chromium treatment plant.

5: Starting February 2018, AP Area wells will be sampled monthly due to the close of the Treatability Study. Starting March 30th, AP Area well operation and maintenance will be transferred to ETI, and ETI will perform the monthly sampling starting in April 2018 and will report the results as part of their monthly Interceptor Well Field reporting.

Figure 1 - GW-11 Pond Volume and FBR Influent Perchlorate Concentration

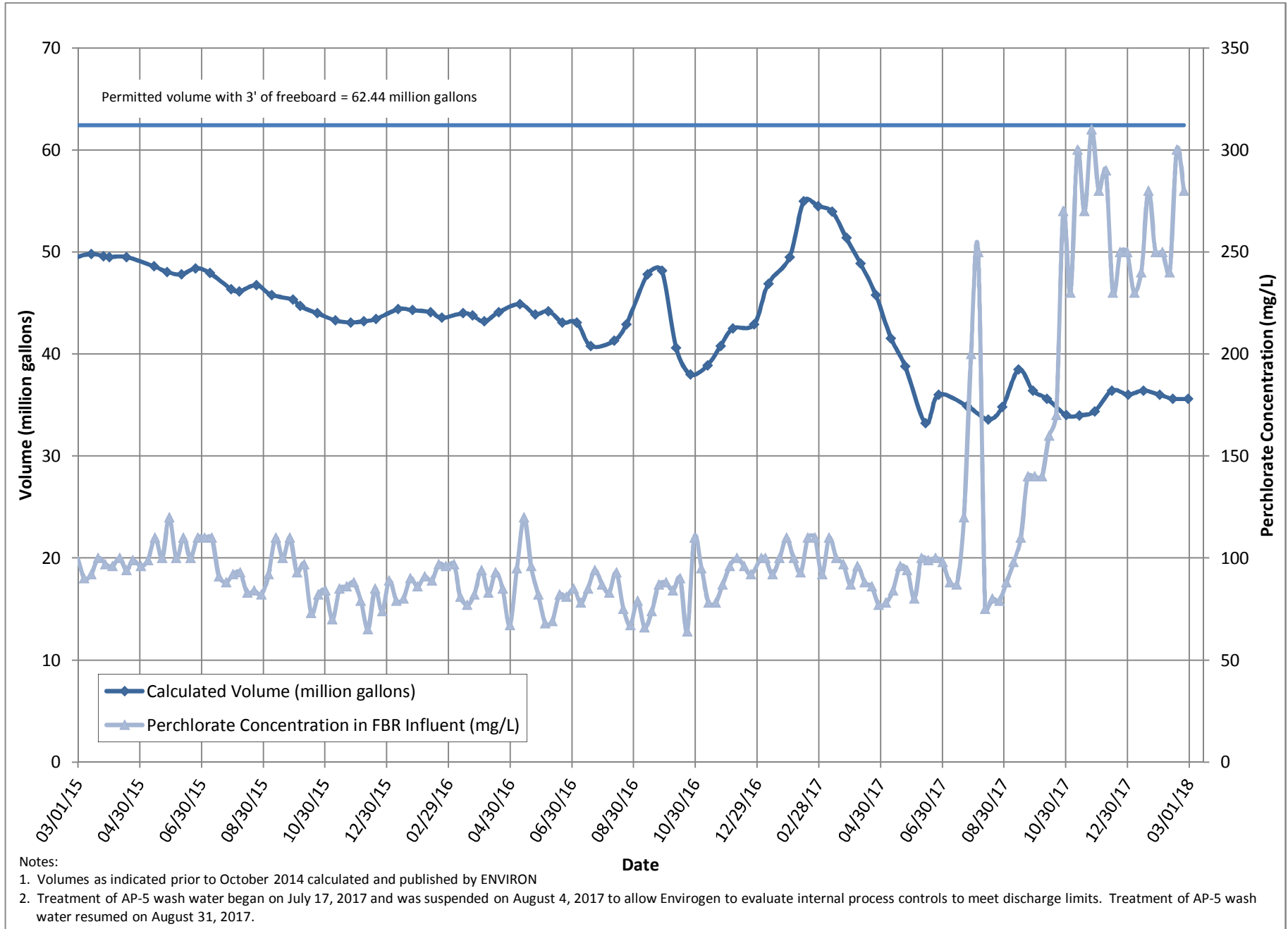


Figure 2 - FBR Equivalent Loading Calculation

