

Table 1 - Seep Well Field (SWF) Operational Metrics

Nevada Environmental Response Trust Groundwater Extraction and Treatment System Enhanced Operational Metrics																				
Date	LS #1 Flow (gpm)	PC-116R (East Well)		PC-99R2/R3 (Center Well)		PC-115R (West Well)		PC-117		PC-118		PC-119		PC-120		PC-121		PC-133		
		Flow (gpm)	Water Elevation (ft amsl)	Flow (gpm)	Water Elevation (ft amsl)	Flow (gpm)	Water Elevation (ft amsl)	Flow (gpm)	Water Elevation (ft amsl)	Flow (gpm)	Water Elevation (ft amsl)	Flow (gpm)	Water Elevation (ft amsl)	Flow (gpm)	Water Elevation (ft amsl)	Flow (gpm)	Water Elevation (ft amsl)	Flow (gpm)	Water Elevation (ft amsl)	
12/01/17	651	167	1537.13	89	1542.16	130	1542.85	116	1537.63	61	1547.05	101	1548.27	50	1549.52	20	1550.47	10	1523.06	
12/02/17	650	169	1537.04	89	1542.15	130	1542.87	117	1537.65	62	1547.09	103	1548.30	52	1549.54	21	1550.50	9.8	1523.16	
12/03/17	648	168	1537.15	89	1542.14	130	1542.84	116	1537.61	62	1547.07	102	1548.28	51	1549.52	21	1550.48	10	1523.04	
12/04/17 ²	573	168	1536.76	91	1541.88	130	1542.85	116	1537.62	62	1547.07	102	1548.28	51	1549.52	21	1550.48	10	1523.08	
12/05/17	658	167	1536.60	89	1542.88	128	1542.86	115	1537.62	61	1547.07	101	1548.28	50	1549.53	20	1550.48	9.6	1523.02	
12/06/17	651	169	1536.44	90	1542.21	131	1542.88	117	1537.55	62	1546.94	102	1548.19	51	1549.38	21	1550.47	10	1522.84	
12/07/17	652	168	1536.30	90	1542.13	133	1542.86	116	1537.52	62	1546.93	102	1548.17	51	1549.36	20	1550.45	9.7	1522.81	
12/08/17	651	169	1536.26	89	1542.13	128	1542.84	116	1537.51	61	1546.92	103	1548.16	51	1549.35	21	1550.44	10	1522.88	
12/09/17	662	165	1536.20	88	1542.13	128	1542.82	114	1537.49	61	1546.90	100	1548.14	50	1549.33	20	1550.41	10	1522.91	
12/10/17	649	171	1536.11	90	1541.94	132	1542.79	118	1537.47	63	1546.88	104	1548.12	51	1549.30	20	1550.39	9.9	1522.94	
12/11/17 ²	578	168	1536.07	87	1542.01	130	1542.80	116	1537.46	62	1546.86	102	1548.10	51	1549.29	21	1550.37	10	1522.96	
12/12/17	670	169	1536.00	89	1542.09	130	1542.80	116	1537.47	62	1546.86	102	1548.10	51	1549.29	20	1550.37	10	1523.08	
12/13/17	651	169	1535.94	89	1542.09	131	1542.78	116	1537.46	61	1546.85	102	1548.09	51	1549.27	21	1550.36	9.7	1523.10	
12/14/17	652	170	1535.84	90	1542.07	132	1542.75	117	1537.44	63	1546.82	103	1548.06	52	1549.24	20	1550.32	11	1523.04	
12/15/17	650	167	1535.78	89	1542.13	130	1542.75	114	1537.44	61	1546.84	101	1548.07	50	1549.25	21	1550.33	9.7	1523.22	
12/16/17	649	169	1535.74	89	1541.99	130	1542.72	116	1537.42	61	1546.80	102	1548.03	51	1549.20	20	1550.29	10	1523.19	
12/17/17	648	167	1535.68	88	1542.04	129	1542.68	115	1537.39	61	1546.76	101	1547.99	50	1549.17	21	1550.25	9.6	1523.09	
12/18/17 ²	563	168	1535.61	89	1542.03	130	1542.68	116	1537.35	61	1546.74	102	1547.97	51	1549.14	21	1550.22	10	1523.13	
12/19/17	664	169	1535.59	89	1542.12	130	1542.66	116	1537.34	61	1546.73	102	1547.96	51	1549.13	20	1550.21	10	1523.26	
12/20/17	664	168	1535.69	89	1541.82	130	1542.63	116	1537.31	61	1546.70	101	1547.93	51	1549.10	21	1550.18	9.7	1523.11	
12/21/17	664	170	1535.53	89	1542.03	131	1542.59	117	1537.27	61	1546.67	103	1547.89	51	1549.06	20	1550.14	10	1523.01	
12/22/17	665	168	1535.49	89	1541.61	130	1542.56	116	1537.27	61	1546.64	102	1547.86	51	1549.03	20	1550.11	9.7	1523.01	
12/23/17	663	167	1535.38	88	1542.27	129	1542.54	115	1537.24	61	1546.62	102	1547.85	50	1549.01	21	1550.09	9.7	1523.14	
12/24/17	669	170	1535.39	89	1542.01	132	1542.53	118	1537.24	62	1546.61	103	1547.83	51	1549.00	20	1550.07	11	1523.13	
12/25/17	661	170	1535.40	90	1542.08	132	1542.50	118	1537.21	62	1546.59	103	1547.80	52	1548.97	21	1550.04	9.8	1523.11	
12/26/17	644	166	1535.39	87	1541.69	129	1542.47	115	1537.17	61	1546.55	101	1547.77	50	1548.93	20	1550.01	10	1523.05	
12/27/17	645	166	1535.33	87	1541.97	128	1542.45	114	1537.17	60	1546.53	100	1547.75	50	1548.92	20	1550.00	9.6	1523.13	
12/28/17	650	168	1535.18	88	1541.97	130	1542.44	116	1537.15	61	1546.53	102	1547.74	51	1548.91	20	1549.98	9.7	1523.12	
12/29/17	652	168	1535.02	88	1541.81	130	1542.44	116	1537.15	61	1546.52	102	1547.74	51	1548.90	21	1549.98	10	1523.19	
12/30/17	652	169	1534.98	89	1542.03	131	1542.43	117	1537.15	61	1546.52	102	1547.73	52	1548.89	20	1549.97	9.8	1523.14	
12/31/17	651	171	1535.00	90	1541.88	132	1542.42	118	1537.14	62	1546.50	104	1547.72	52	1548.87	20	1549.95	9.9	1523.15	
Monthly Average	647	168	1535.87	89	1542.02	130	1542.68	116	1537.38	61	1546.78	102	1548.01	51	1549.19	20	1550.25	10	1523.07	
Analytical		Conc (mg/L)	Date	Conc (mg/L)	Date	Conc (mg/L)	Date	Conc (mg/L)	Date	Conc (mg/L)	Date	Conc (mg/L)	Date	Conc (mg/L)	Date	Conc (mg/L)	Date	Conc (mg/L)	Date	
Perchlorate		17	12/6/2017	20	12/6/2017	16	12/6/2017	8.1	12/6/2017	6.5	12/6/2017	1.2	12/6/2017	0.053	12/6/2017	0.032	F1	12/6/2017	2.8	12/6/2017
Hexavalent Chromium		0.0026	12/6/2017	ND	12/6/2017	ND	12/6/2017	0.0032	12/6/2017	ND	12/6/2017	ND	12/6/2017	ND	12/6/2017	ND	12/6/2017	ND	12/6/2017	
Total Chromium		0.0029	12/6/2017	ND	12/6/2017	ND	12/6/2017	0.0035	12/6/2017	ND	12/6/2017	ND	12/6/2017	ND	12/6/2017	ND	12/6/2017	ND	12/6/2017	

Notes:
 Flow reported as gpm is a daily average calculated from the totalizer reading.
 ND = Not detected above laboratory method detection limit (Cr(TR)=2.5 ug/L, Cr(VI)=0.20 ug/L).
 J = Result is less than the reporting limit but greater than or equal to the method detection limit and the concentration is an approximate value.
 F1 = MS and/or MSD Recovery is outside acceptance limits.
 1: Analytical results are reported from TestAmerica.
 2: On 12/04, 12/11, and 12/18, the LS #1 and SWF totalizers were reset. Instantaneous flow rate at the time of the water level measurement was used for these dates.
 3: Duplicates taken on 12/06 for well PC-115R; average of both values is presented and used for calculation.

Nevada Environmental Response Trust Groundwater Extraction and Treatment System Enhanced Operational Metrics																	
Date	LS #3 Flow ^{2,4,5,6} (gpm)	ART-1/1A		ART-2/2A		ART-3/3A		ART-4/4A		ART-9		ART-7A/7B		ART-8/8A		PC-150	
		Flow (gpm)	Water Elevation (ft amsl)	Flow (gpm)	Water Elevation (ft amsl)	Flow (gpm)	Water Elevation (ft amsl)	Flow ⁸ (gpm)	Water Elevation (ft amsl)	Flow ⁹ (gpm)	Water Elevation (ft amsl)	Flow (gpm)	Water Elevation ¹⁰ (ft amsl)	Flow (gpm)	Water Elevation (ft amsl)	Flow ¹¹ (gpm)	Water Elevation (ft amsl)
12/01/17	411	41	1583.05	150	1582.03	19	1582.15	1.6	1579.12	63	1577.75	16	1584.08	176	1582.72	1.5	1576.67
12/02/17	410	42	1583.06	149	1582.04	19	1582.16	1.7	1579.12	64	1576.85	16	1584.11	175	1582.73	1.5	1576.67
12/03/17	411	41	1583.06	149	1582.04	19	1582.17	2.1	1579.12	64	1576.88	16	1584.11	176	1582.73	1.5	1576.67
12/04/17 ²	406	42	1583.06	147	1582.04	15	1582.17	3.9	1579.12	64	1577.29	17	1584.13	177	1582.74	1.5	1576.67
12/05/17	411	41	1583.07	149	1582.05	19	1582.18	3.4	1579.12	63	1577.01	16	1584.13	176	1582.74	1.5	1576.67
12/06/17	411	41	1583.08	150	1582.23	19	1580.73	3.5	1579.10	64	1579.65	16	1584.19	176	1582.31	1.5	1576.70
12/07/17	412	42	1583.09	149	1582.23	19	1580.73	2.1	1579.10	64	1578.74	16	1584.19	176	1582.31	1.5	1576.69
12/08/17	411	41	1583.08	149	1582.23	19	1580.73	2.1	1579.10	64	1578.10	16	1584.16	176	1582.31	1.5	1576.70
12/09/17	411	41	1583.08	149	1582.23	18	1580.73	2.0	1579.10	64	1577.19	16	1584.16	176	1582.31	1.5	1576.69
12/10/17	410	42	1583.08	148	1582.23	18	1580.73	1.4	1579.10	64	1577.85	16	1584.16	176	1582.30	1.5	1576.69
12/11/17 ²	325	42	1583.07	151	1582.22	23	1580.72	2.8	1579.10	74	1578.11	22	1584.15	177	1582.30	1.5	1576.69
12/12/17	422	41	1583.06	149	1582.22	19	1580.72	2.1	1579.10	64	1577.25	16	1584.16	176	1582.29	1.5	1576.69
12/13/17	411	41	1583.05	150	1582.21	19	1580.71	1.3	1579.10	63	1576.95	16	1584.19	176	1582.28	1.5	1576.69
12/14/17	411	41	1583.04	149	1582.19	18	1580.70	1.3	1579.10	64	1579.82	16	1584.16	176	1582.27	1.5	1576.69
12/15/17	410	41	1583.03	150	1582.19	19	1580.70	1.3	1579.10	63	1576.95	16	1584.19	176	1582.27	1.5	1576.69
12/16/17	410	41	1583.01	148	1582.17	18	1580.69	1.3	1579.10	64	1576.88	16	1584.16	176	1582.25	1.5	1576.69
12/17/17	409	41	1582.99	149	1582.15	19	1580.67	1.3	1579.10	63	1577.99	16	1584.16	176	1582.23	1.5	1576.69
12/18/17 ²	430	41	1582.98	148	1582.14	16	1580.67	1.3	1579.10	94	1577.01	19	1584.12	177	1582.22	1.5	1576.69
12/19/17	408	41	1582.98	148	1582.16	18	1580.66	1.3	1579.10	63	1577.57	15	1584.15	177	1582.22	1.5	1576.69
12/20/17	408	41	1582.96	149	1582.15	19	1580.65	1.5	1579.10	62	1577.09	16	NM	177	1582.21	1.5	1576.69
12/21/17	408	42	1582.94	149	1582.10	18	1580.64	1.5	1579.10	63	1581.12	16	1580.19	176	1582.19	1.5	1576.68
12/22/17	408	41	1582.93	149	1582.09	18	1580.63	1.5	1579.09	63	1581.11	16	1580.01	176	1582.18	1.5	1576.69
12/23/17	393	39	1583.00	142	1582.19	18	1580.69	1.5	1579.09	62	1581.11	16	1580.65	169	1582.24	1.5	1576.69
12/24/17	411	41	1582.94	148	1582.13	18	1580.64	1.5	1579.10	64	1581.11	15	1580.96	176	1582.19	1.5	1576.68
12/25/17	408	41	1582.91	148	1582.07	18	1580.62	1.5	1579.10	64	1581.11	16	1580.04	176	1582.16	1.5	1576.68
12/26/17	400	40	1582.96	144	1582.12	18	1580.65	1.5	1579.09	63	1581.08	15	1580.48	173	1582.19	1.5	1576.68
12/27/17	408	40	1582.89	148	1582.05	18	1580.60	0.80	1579.09	63	1581.05	16	1580.68	176	1582.14	1.5	1576.68
12/28/17	399	40	1582.99	143	1582.16	18	1580.69	0.80	1579.10	62	1581.08	16	1580.25	171	1582.25	1.5	1576.68
12/29/17	409	40	1582.88	146	1582.04	18	1580.59	0.80	1579.09	63	1581.05	16	1580.62	176	1582.13	1.5	1576.68
12/30/17	383	38	1583.06	137	1582.21	17	1580.72	0.80	1579.46	61	1581.08	15	1581.52	164	1582.28	1.5	1576.68
12/31/17	394	38	1583.06	140	1582.23	18	1580.73	0.80	1579.09	62	1581.02	16	1580.96	168	1582.30	1.5	1576.68
Monthly Average	406	41	1583.01	147	1582.15	18	1580.92	1.7	1579.11	65	1578.87	16	1582.84	175	1582.32	1.5	1576.68
Analytical ¹		Conc (mg/L)	Date	Conc (mg/L)	Date	Conc (mg/L)	Date	Conc (mg/L)	Date	Conc (mg/L)	Date	Conc (mg/L)	Date	Conc (mg/L)	Date	Conc (mg/L)	Date
Perchlorate		23	12/7/2017	16	12/7/2017	200	12/7/2017	130	12/7/2017	180	12/7/2017	100	12/7/2017	93	12/7/2017	91	12/7/2017
Hexavalent Chromium		ND	12/7/2017	0.0081	12/7/2017	0.35	12/7/2017	0.16	12/7/2017	0.70	12/7/2017	0.57	12/7/2017	0.11	12/7/2017	0.071	12/7/2017
Total Chromium		ND	12/7/2017	0.0073	12/7/2017	0.33	12/7/2017	0.14	12/7/2017	0.62	12/7/2017	0.52	12/7/2017	0.10	12/7/2017	0.076	12/7/2017

Notes:
 Flow reported as gpm is a daily average calculated from the totalizer reading.
 ND = Not detected above laboratory method detection limit (ClO₂ = 0.5 ug/L; ClO₃ = 10 ug/L; NO₃-N = 0.055 mg/L, Cr(VI) = 0.25 ug/L).
 ART-1, 2, 3, 4, 7B, and 8 have adjacent recovery wells, both of which can be used for extraction. The pumping well can be chosen manually or automatically, based on operational considerations. The wells with transducers are ART-1, -2, -3, -4, -7A, -8, -9, and PC-150.
 NM = No measurement.
 1: Analytical results are reported from TestAmerica.
 2: On 12/04, 12/11, and 12/18, the LS #3 and AWF totalizers were reset. Instantaneous flow rate at the time of the water level measurement was used for these dates.
 3: On 12/23, LS #3 offline from 10:43 am to 11:34 am for maintenance.
 4: On 12/26, LS #3 offline from 12:56 pm to 1:27 pm for maintenance.
 5: On 12/28, LS #3 offline from 7:42 pm to 8:35 pm due to transmitter malfunction.
 6: From 12/30 to 12/31, LS #3 offline intermittently due to transmitter malfunction. Transmitter replaced on 12/31 at 7:05 pm.
 7: Duplicates taken on 12/07 for well ART-2; average of both values is presented and used for calculation.
 8: From 12/13 to 12/31, flow for ART-4/-4A was fluctuating. Weekly flow averages were used for calculation purposes.
 9: On 12/21, ART-9 was adjusted to reduce fluctuation of flow.
 10: On 12/20, the ART-7B transducer lost communication with the control panel at 3:34 pm. Communication was restored on 12/21 at 10:39am.
 11: Conducted periodic bucket tests to confirm flow rates for PC-150. Average flow of 1.5 gpm determined from flow tests is presented for 12/01-12/31 flows and used for calculation purposes. Flow was steady throughout December but the totalizer showed zero flow because totalizer units are 1,000 gallons.

Table 3 - Interceptor Well Field (IWF) Operational Metrics

Nevada Environmental Response Trust Groundwater Extraction and Treatment System Enhanced Operational Metrics																				
Date	I-AR		I-AA		I-AB		I-AC		I-AD		I-B		I-C		I-D		I-E		I-F	
	Flow ^{4,5,6,7} (gpm)	Water Elevation (ft amsl)	Flow ^{8,9,10} (gpm)	Water Elevation (ft amsl)	Flow (gpm)	Water Elevation (ft amsl)	Flow (gpm)	Water Elevation (ft amsl)	Flow (gpm)	Water Elevation (ft amsl)	Flow ¹⁰ (gpm)	Water Elevation (ft amsl)	Flow ⁹ (gpm)	Water Elevation (ft amsl)	Flow ¹¹ (gpm)	Water Elevation (ft amsl)	Flow ¹¹ (gpm)	Water Elevation (ft amsl)	Flow (gpm)	Water Elevation (ft amsl)
12/01/17	0.19	1724.91	1.0	1714.39	0.00	1719.99	0.00	1724.05	0.00	1725.02	0.34	1716.56	3.0	1713.55	1.7	1706.32	1.3	1708.37	4.3	1712.02
12/02/17	0.18	1725.09	1.0	1710.32	0.00	1720.01	0.00	1724.07	0.00	1725.03	0.32	1717.07	2.9	1713.55	1.8	1706.72	1.3	1708.37	4.4	1712.13
12/03/17	0.17	1725.18	1.0	1710.53	0.00	1719.98	0.00	1724.03	0.00	1725.02	0.30	1716.73	3.0	1712.67	1.8	1706.23	1.3	1708.30	4.5	1712.16
12/04/17 ³	0.16	1725.39	1.0	1711.46	0.00	1719.98	0.00	1724.00	0.00	1725.00	0.29	1716.75	3.5	1712.91	0.79	1706.54	1.8	1708.29	4.4	1712.20
12/05/17	0.15	1725.57	1.0	1711.49	0.00	1719.97	0.00	1724.00	0.00	1725.00	0.30	1716.49	3.4	1712.79	1.7	1706.51	1.3	1708.44	4.4	1711.97
12/06/17	0.20	1724.44	0.98	1711.44	0.00	1719.96	0.00	1723.98	0.00	1724.99	0.32	1716.60	3.4	1712.83	1.7	1706.22	1.3	1708.28	4.3	1711.87
12/07/17	0.18	1725.22	1.1	1711.12	0.00	1719.93	0.00	1723.86	0.00	1724.97	0.31	1716.84	3.3	1712.93	1.7	1706.39	1.3	1708.36	4.3	1711.79
12/08/17	0.27	1722.99	1.1	1711.26	0.00	1719.92	0.00	1723.89	0.00	1724.98	0.31	1716.90	3.3	1712.87	1.7	1706.22	1.3	1708.29	4.3	1711.75
12/09/17	0.27	1723.78	1.2	1711.26	0.00	1719.88	0.00	1723.88	0.00	1724.98	0.31	1716.73	3.3	1712.87	1.7	1706.66	1.3	1708.37	4.4	1711.72
12/10/17	0.23	1724.29	0.39	1711.39	0.00	1720.10	0.00	1723.89	0.00	1724.98	0.31	1716.93	3.3	1712.81	1.7	1706.60	1.3	1708.50	4.5	1711.69
12/11/17 ³	0.20	1724.70	0.21	1709.72	0.00	1720.00	0.00	1723.89	0.00	1724.98	0.32	1716.68	3.8	1709.63	2.1	1706.19	0.70	1708.58	4.4	1711.66
12/12/17	0.15	1725.51	0.17	1719.82	0.02	1720.14	0.02	1723.90	0.01	1725.00	0.31	1716.76	3.7	1710.06	1.6	1706.42	1.3	1708.32	4.3	1711.66
12/13/17	0.13	1725.44	0.21	1719.87	0.00	1720.14	0.00	1723.96	0.00	1725.01	0.34	1714.66	3.6	1711.03	1.6	1706.46	1.3	1708.34	4.3	1711.65
12/14/17	0.28	1723.43	1.1	1719.77	0.00	1719.87	0.00	1723.91	0.00	1725.00	0.41	1714.23	3.7	1710.71	1.6	1706.76	1.3	1708.50	4.3	1711.64
12/15/17	0.26	1723.96	1.1	1719.87	0.00	1719.85	0.00	1723.97	0.00	1725.02	0.40	1714.67	3.7	1710.53	1.6	1707.20	1.3	1708.35	4.3	1711.64
12/16/17	0.23	1724.41	1.0	1719.79	0.00	1719.88	0.00	1723.96	0.00	1725.03	0.39	1715.11	3.8	1710.27	1.6	1706.38	1.3	1708.46	4.4	1711.63
12/17/17	0.21	1724.75	0.87	1710.28	0.00	1719.93	0.00	1723.91	0.00	1725.01	0.37	1715.55	3.8	1709.66	1.6	1707.03	1.3	1708.40	4.5	1711.63
12/18/17 ³	0.17	1725.23	0.25	1718.36	0.00	1718.36	0.00	1720.05	0.00	1723.91	0.34	1716.09	3.4	1710.89	2.0	1706.17	1.4	1708.35	4.4	1711.85
12/19/17	0.26	1721.93	0.19	1719.56	0.00	1720.13	0.00	1723.93	0.00	1725.01	0.34	1716.50	3.8	1707.88	1.6	1706.25	1.3	1708.34	4.4	1712.15
12/20/17	0.34	1722.31	0.78	1719.45	0.00	1719.89	0.00	1723.93	0.00	1725.03	0.33	1716.55	3.8	1708.02	1.6	1706.18	1.3	1708.35	4.4	1712.06
12/21/17	0.30	1723.28	1.1	1718.34	0.00	1718.83	0.00	1723.89	0.00	1725.01	0.32	1716.61	3.8	1707.96	1.6	1706.23	1.3	1708.35	4.3	1711.97
12/22/17	0.26	1723.88	1.1	1719.25	0.00	1719.82	0.00	1723.89	0.00	1725.01	0.38	1709.94	3.8	1709.38	1.6	1706.19	1.3	1708.35	4.3	1711.89
12/23/17	0.23	1724.10	1.1	1719.38	0.00	1719.75	0.00	1723.91	0.00	1725.02	0.53	1709.93	3.8	1708.85	1.6	1706.18	1.2	1708.36	4.4	1711.76
12/24/17	0.22	1724.20	1.1	1719.36	0.00	1719.73	0.00	1723.94	0.00	1725.03	0.53	1709.94	3.8	1709.09	1.6	1706.18	1.2	1708.36	4.5	1711.69
12/25/17	0.21	1724.41	1.1	1719.37	0.00	1719.72	0.00	1723.93	0.00	1725.03	0.53	1709.94	3.8	1708.92	1.6	1706.17	1.2	1708.36	4.4	1711.64
12/26/17	0.20	1724.69	1.1	1718.25	0.00	1719.72	0.00	1723.91	0.00	1725.02	0.53	1709.93	3.8	1708.49	1.6	1706.18	1.2	1708.52	4.5	1711.60
12/27/17	0.19	1724.78	1.1	1710.24	0.00	1719.72	0.00	1723.91	0.00	1725.03	0.53	1709.93	3.8	1708.05	1.6	1706.18	1.1	1713.65	4.5	1711.60
12/28/17	0.18	1724.81	1.1	1710.30	0.00	1719.70	0.00	1723.91	0.00	1725.03	0.53	1709.94	3.8	1707.90	1.6	1706.18	1.1	1714.58	4.3	1711.59
12/29/17	0.18	1724.87	1.1	1710.26	0.00	1719.67	0.00	1723.92	0.00	1725.03	0.52	1709.93	3.8	1707.91	1.5	1710.78	0.67	1717.17	4.2	1711.66
12/30/17	0.17	1724.96	1.1	1710.27	0.00	1719.67	0.00	1723.94	0.00	1725.04	0.52	1709.93	3.7	1707.94	1.4	1715.19	0.59	1717.54	4.2	1711.70
12/31/17	0.24	1723.40	0.99	1710.25	0.00	1719.67	0.00	1723.92	0.00	1725.03	0.52	1709.93	3.7	1708.13	1.3	1717.02	0.59	1717.14	4.2	1711.73
Monthly Average	0.21	1724.38	0.89	1714.72	0.00	1719.89	0.00	1723.94	0.00	1725.01	0.39	1714.20	3.6	1710.36	1.6	1707.16	1.2	1709.61	4.4	1711.80
Analytical	Conc (mg/L)	Date	Conc (mg/L)	Date	Conc (mg/L)	Date	Conc (mg/L)	Date	Conc (mg/L)	Date	Conc (mg/L)	Date	Conc (mg/L)	Date	Conc (mg/L)	Date	Conc (mg/L)	Date	Conc (mg/L)	Date
Perchlorate	1.700	12/12/2017	61	12/12/2017	150	12/12/2017	240	12/12/2017	150	12/12/2017	230	12/12/2017	680	12/13/2017	580	12/13/2017	500	12/13/2017	710	12/13/2017
Hexavalent Chromium	0.15	12/12/2017	0.052	12/12/2017	ND	12/12/2017	2.2	12/12/2017	1.1	12/12/2017	0.037	12/12/2017	2.0	12/13/2017	4.6	12/13/2017	6.1	12/13/2017	13	12/13/2017
Total Chromium	0.24	12/12/2017	0.053	12/12/2017	0.015	12/12/2017	2.1	12/12/2017	1.0	12/12/2017	0.046	12/12/2017	1.9	12/13/2017	5.1	12/13/2017	6.3	12/13/2017	13	12/13/2017

Notes:
 Flow reported as gpm is a daily average calculated from the totalizer reading.
 ND = Not detected above laboratory method detection limit (Cr(VI) = 1.0 ug/L).
 1: Analytical results are reported from TestAmerica.
 2: A "c" preceding the water elevation indicates the reported water level is below the transducer. Average monthly water elevation calculations include the transducer elevation in instances where the water level is below or above the transducer.
 3: On 12/04, 12/11, and 12/18, the IWF totalizers were reset. Instantaneous flow rate at the time of the water level measurement was used for these dates.
 4: On 12/06, I-AR adjusted to meet flow target as directed by the Trust.
 5: On 12/08, I-AR, I-G, and I-Q adjusted to meet flow target as directed by the Trust.
 6: On 12/19, I-AR and I-X adjusted to meet flow target as directed by the Trust.
 7: On 12/31, I-AR adjusted to meet flow target as directed by the Trust.
 8: On 12/10, I-AA, I-C, I-L, I-P and I-U adjusted to meet flow target as directed by the Trust.
 9: On 12/20, I-AA, I-Q and I-X adjusted to meet flow target as directed by the Trust.
 10: On 12/22, I-AA, I-B, I-H, I-N, I-U, I-W and I-X adjusted to meet flow target as directed by the Trust.
 11: On 12/18, I-D, I-E, I-N and I-X adjusted to meet flow target as directed by the Trust.

Nevada Environmental Response Trust Groundwater Extraction and Treatment System Enhanced Operational Metrics																				
Date	I-G		I-H		I-I		I-J		I-K		I-L		I-M		I-N		I-O		I-P	
	Flow ^{5, 12, 13, 14, 15} (gpm)	Water Elevation (ft amsl)	Flow ¹⁰ (gpm)	Water Elevation (ft amsl)	Flow (gpm)	Water Elevation (ft amsl)	Flow (gpm)	Water Elevation (ft amsl)	Flow (gpm)	Water Elevation (ft amsl)	Flow ⁸ (gpm)	Water Elevation (ft amsl)	Flow ¹⁵ (gpm)	Water Elevation (ft amsl)	Flow ^{10, 11} (gpm)	Water Elevation (ft amsl)	Flow (gpm)	Water Elevation (ft amsl)	Flow ⁸ (gpm)	Water Elevation (ft amsl)
12/01/17	0.10	1715.33	1.1	1719.23	4.9	1721.73	6.5	1707.02	3.0	1715.24	1.3	1715.51	1.8	1718.38	3.6	1712.65	0.94	1721.21	1.8	1720.51
12/02/17	0.11	1715.33	1.1	1719.27	4.9	1721.74	6.5	1707.02	3.0	1715.26	1.2	1715.80	1.8	1718.41	3.7	1712.68	0.93	1721.21	1.8	1720.51
12/03/17	0.11	1715.33	1.1	1719.23	4.9	1721.71	6.5	1707.02	3.0	1715.31	1.1	1714.85	1.9	1718.54	3.8	1712.64	0.94	1721.19	1.8	1720.48
12/04/17 ³	0.19	1715.75	1.1	1719.22	5.0	1721.68	6.3	1707.02	3.1	1715.27	1.2	1714.91	1.8	1718.44	3.5	1712.64	0.93	1721.17	1.7	1720.44
12/05/17	0.10	1715.65	1.1	1719.23	4.9	1721.68	6.4	1707.02	3.1	1715.28	1.2	1714.86	2.1	1718.49	3.7	1712.67	0.93	1721.16	1.7	1720.42
12/06/17	0.09	1715.77	1.1	1719.23	4.9	1721.67	6.4	1707.02	3.0	1715.26	1.2	1715.23	2.2	1718.55	3.6	1712.66	0.93	1721.15	1.7	1720.40
12/07/17	0.09	1717.50	1.1	1719.23	4.9	1721.42	6.4	1707.04	3.0	1715.49	1.2	1715.39	2.2	1718.21	3.6	1712.65	0.93	1721.14	1.7	1720.39
12/08/17	0.10	1717.23	1.1	1719.26	4.9	1721.44	6.4	1707.04	3.0	1715.49	1.2	1715.39	2.2	1718.38	3.5	1712.66	0.94	1721.15	1.8	1720.41
12/09/17	0.09	1717.23	1.1	1719.31	4.9	1721.44	6.4	1707.04	3.0	1715.32	1.1	1715.76	2.2	1718.38	3.5	1712.66	0.94	1721.16	1.7	1720.45
12/10/17	0.06	1717.23	1.1	1719.39	4.9	1721.46	6.4	1707.04	3.0	1715.33	1.1	1715.72	2.2	1718.54	3.5	1712.66	0.94	1721.18	1.7	1720.54
12/11/17 ³	0.09	1719.96	1.1	1719.31	4.9	1721.45	6.5	1707.04	3.0	1715.33	1.4	1712.49	2.1	1717.29	3.5	1712.66	0.92	1721.14	1.9	1720.22
12/12/17	0.02	1719.06	1.1	1719.32	4.9	1721.48	6.5	1707.05	3.1	1715.36	1.4	1712.91	2.1	1717.28	3.5	1712.66	0.93	1721.15	1.9	1720.20
12/13/17	0.05	1717.86	1.1	1719.33	4.9	1721.49	6.5	1707.05	3.0	1715.41	1.3	1713.03	2.1	1717.36	3.4	1712.66	0.93	1721.17	1.9	1720.24
12/14/17	0.10	1718.40	1.1	1719.37	4.9	1721.46	6.5	1707.05	3.0	1715.37	1.4	1712.85	2.1	1717.32	3.4	1712.66	0.93	1721.14	1.9	1720.22
12/15/17	0.08	1718.23	1.0	1719.44	4.9	1721.50	6.5	1707.05	3.0	1715.46	1.4	1713.19	2.1	1717.37	3.4	1712.66	0.94	1721.17	1.9	1720.25
12/16/17	0.13	1717.95	1.0	1719.46	4.9	1721.50	6.5	1707.05	3.0	1715.43	1.3	1713.61	2.1	1717.33	3.4	1712.67	0.93	1721.18	1.9	1720.28
12/17/17	0.13	1714.26	1.1	1719.43	4.9	1721.46	6.5	1707.05	3.0	1715.36	1.3	1713.84	2.1	1717.00	3.4	1712.72	0.94	1721.16	1.9	1720.24
12/18/17 ³	0.22	1715.00	0.99	1719.66	4.9	1721.46	6.5	1707.05	3.1	1715.35	1.2	1714.26	2.1	1717.42	3.4	1712.66	0.91	1721.17	1.9	1720.31
12/19/17	0.12	1715.42	1.0	1719.70	5.0	1721.49	6.5	1707.05	3.1	1715.39	1.3	1713.40	2.1	1717.42	3.3	1716.24	0.93	1721.19	1.9	1720.37
12/20/17	0.12	1715.10	0.99	1719.73	4.9	1721.50	6.5	1707.05	3.0	1715.42	1.3	1713.20	2.1	1717.43	3.3	1716.54	0.92	1721.22	1.9	1720.42
12/21/17	0.13	1715.38	0.99	1719.71	4.9	1721.48	6.5	1707.05	3.0	1715.38	1.3	1713.31	2.0	1717.49	3.2	1716.31	0.92	1721.20	1.9	1720.40
12/22/17	0.13	1715.49	1.1	1718.06	4.9	1721.49	6.5	1707.05	3.0	1715.30	1.3	1713.63	2.0	1717.18	3.4	1712.68	0.92	1721.28	1.9	1720.51
12/23/17	0.11	1715.26	1.3	1718.20	4.9	1721.51	6.5	1707.06	3.0	1715.31	1.3	1713.73	2.0	1717.47	3.6	1712.70	0.93	1721.25	1.9	1720.48
12/24/17	0.10	1715.41	1.2	1718.66	4.9	1721.54	6.5	1707.06	3.0	1715.37	1.3	1713.64	1.9	1717.29	3.5	1712.66	0.93	1721.29	1.8	1720.58
12/25/17	0.10	1715.42	1.2	1718.73	4.9	1721.54	6.6	1707.06	3.0	1715.44	1.3	1714.31	1.9	1717.30	3.4	1712.70	0.94	1721.28	1.8	1720.57
12/26/17	0.10	1715.93	1.2	1718.70	4.9	1721.52	6.6	1707.06	3.0	1715.35	1.2	1714.24	1.9	1717.15	3.4	1712.72	0.94	1721.28	1.8	1720.58
12/27/17	0.10	1716.43	1.2	1718.78	5.1	1721.53	6.6	1707.06	3.0	1715.47	1.2	1714.49	1.9	1717.89	3.4	1712.69	0.94	1721.28	1.8	1720.58
12/28/17	0.10	1716.56	1.2	1718.85	5.2	1721.53	6.6	1707.06	3.0	1715.46	1.3	1714.43	1.9	1717.97	3.4	1712.64	0.94	1721.28	1.8	1720.58
12/29/17	0.09	1716.49	1.2	1719.01	5.2	1721.55	6.6	1707.06	3.0	1715.44	1.4	1711.96	1.9	1717.91	3.5	1712.69	0.93	1721.33	1.8	1720.68
12/30/17	0.09	1716.53	1.2	1719.29	5.2	1721.57	6.6	1707.06	3.0	1715.44	1.4	1712.87	1.9	1717.99	3.6	1712.68	0.94	1721.35	1.7	1720.75
12/31/17	0.09	1716.45	1.2	1719.31	5.2	1721.56	6.6	1707.06	3.0	1715.42	1.3	1712.99	1.9	1717.95	3.6	1712.66	0.94	1721.36	1.7	1720.77
Monthly Average	0.10	1716.32	1.1	1719.18	5.0	1721.53	6.5	1707.05	3.0	1715.37	1.3	1713.96	2.0	1717.78	3.5	1713.06	0.93	1721.21	1.8	1720.44
Analytical ¹	Conc (mg/L)	Date	Conc (mg/L)	Date	Conc (mg/L)	Date	Conc (mg/L)	Date	Conc (mg/L)	Date	Conc (mg/L)	Date	Conc ² (mg/L)	Date	Conc (mg/L)	Date	Conc (mg/L)	Date	Conc (mg/L)	Date
Perchlorate	1,300	12/13/2017	1,200	12/13/2017	880	12/12/2017	310	12/12/2017	250	12/12/2017	590	12/12/2017	805	12/13/2017	500	12/13/2017	870	12/13/2017	990	12/13/2017
Hexavalent Chromium	20	12/13/2017	15	12/13/2017	11	12/12/2017	4.0	12/12/2017	2.3	12/12/2017	0.58	12/12/2017	6.2	12/13/2017	6.2	12/13/2017	17	12/13/2017	16	12/13/2017
Total Chromium	20	12/13/2017	15	12/13/2017	12	12/12/2017	3.8	12/12/2017	2.1	12/12/2017	0.54	12/12/2017	5.9	12/13/2017	6.3	12/13/2017	18	12/13/2017	17	12/13/2017

Notes:
 Flow reported as gpm is a daily average calculated from the totalizer reading.
 1: Analytical results are reported from TestAmerica.
 2: A "c" preceding the water elevation indicates the reported water level is below the transducer. Average monthly water elevation calculations include the transducer elevation in instances where the water level is below or above the transducer.
 3: On 12/04, 12/11, and 12/18, the IWF totalizers were reset. Instantaneous flow rate at the time of the water level measurement was used for these dates.
 5: On 12/08, I-AR, I-G, and I-Q adjusted to meet flow target as directed by the Trust.
 8: On 12/10, I-AA, I-C, I-L, I-P and I-U adjusted to meet flow target as directed by the Trust.
 10: On 12/22, I-AA, I-B, I-H, I-N, I-U, I-W and I-X adjusted to meet flow target as directed by the Trust.
 11: On 12/18, I-D, I-E, I-N and I-X adjusted to meet flow target as directed by the Trust.
 12: On 12/01, 12/02, 12/09 and 12/23, I-G and I-Q adjusted to meet flow target as directed by the Trust.
 13: On 12/03, I-G, I-Q, and I-Y adjusted to meet flow target as directed by the Trust.
 14: On 12/04, it was confirmed the I-G transducer had failed. Manual water level measurements will be taken going forward and were started 12/04.
 15: On 12/14, I-G adjusted to meet flow target as directed by the Trust.
 16: On 12/05, I-M and I-X adjusted to meet flow target as directed by the Trust.
 17: Duplicates taken on 12/13 for well I-M; average of both values is presented and used for calculation purposes.

Table 3 - Interceptor Well Field (IWF) Operational Metrics

Nevada Environmental Response Trust Groundwater Extraction and Treatment System Enhanced Operational Metrics																				
Date	I-Q		I-R		I-S		I-T		I-U		I-V		I-W		I-X		I-Y		I-Z	
	Flow ^{5,9,12,13,18} (gpm)	Water Elevation (ft amsl)	Flow (gpm)	Water Elevation (ft amsl)	Flow (gpm)	Water Elevation (ft amsl)	Flow (gpm)	Water Elevation (ft amsl)	Flow ^{8,10} (gpm)	Water Elevation (ft amsl)	Flow (gpm)	Water Elevation (ft amsl)	Flow ^{10,19} (gpm)	Water Elevation (ft amsl)	Flow ^{6,9,10,11,16} (gpm)	Water Elevation (ft amsl)	Flow ¹³ (gpm)	Water Elevation (ft amsl)	Flow (gpm)	Water Elevation ² (ft amsl)
12/01/17	0.26	1717.95	1.4	1715.39	2.8	1710.69	0.41	1710.67	0.78	1710.43	4.3	1719.10	0.84	1718.64	3.2	1713.79	1.2	1715.00	7.7	< 1707.89
12/02/17	0.19	1716.83	1.4	1715.49	2.9	1710.70	0.41	1710.79	0.77	1710.33	4.3	1719.11	0.86	1718.40	2.9	1714.13	1.3	1714.96	7.7	< 1707.89
12/03/17	0.18	1717.45	1.4	1715.13	2.9	1710.70	0.40	1711.27	0.76	1710.53	4.4	1719.06	0.88	1718.39	2.9	1714.10	1.3	1705.33	7.8	< 1707.89
12/04/17 ³	0.18	1718.70	1.4	1715.09	3.0	1710.69	0.37	1711.51	0.76	1710.62	4.3	1719.02	0.87	1718.42	2.9	1714.18	1.5	1707.51	7.6	< 1707.89
12/05/17	0.19	1712.86	1.4	1715.07	2.8	1710.70	0.37	1711.85	0.75	1710.68	4.3	1719.01	0.86	1718.42	3.6	1705.27	1.5	1706.80	7.7	< 1707.89
12/06/17	0.18	1718.66	1.4	1714.94	2.8	1710.73	0.36	1711.99	0.75	1710.74	4.3	1718.99	0.85	1718.43	3.8	1705.25	1.4	1711.62	7.7	< 1707.89
12/07/17	0.18	1718.06	1.4	1715.00	2.8	1710.69	0.36	1712.05	0.75	1710.74	4.3	1718.96	0.85	1718.43	3.8	1700.78	1.4	1713.46	7.7	< 1707.89
12/08/17	0.17	1718.24	1.5	1714.93	2.8	1710.69	0.38	1711.38	0.74	1711.02	4.3	1718.98	0.84	1718.53	3.7	1705.49	1.3	1713.41	7.7	< 1707.89
12/09/17	0.16	1718.24	1.5	1714.89	2.8	1710.71	0.38	1711.44	0.73	1711.08	4.3	1718.98	0.84	1718.52	3.6	1704.17	1.3	1712.97	7.7	< 1707.89
12/10/17	0.19	1718.42	1.5	1715.01	2.8	1710.69	0.38	1711.68	0.73	1711.27	4.3	1719.01	0.83	1718.62	3.7	1703.16	1.4	1712.81	7.7	< 1707.89
12/11/17 ³	0.20	1718.41	1.5	1714.82	2.7	1710.72	0.37	1711.86	0.83	1708.85	4.3	1718.98	0.82	1718.59	3.6	1705.09	1.4	1712.85	7.7	< 1707.89
12/12/17	0.18	1718.43	1.4	1715.20	2.6	1710.69	0.36	1712.16	0.84	1708.66	4.3	1719.00	0.81	1718.69	3.6	1705.83	1.3	1713.69	7.7	< 1707.89
12/13/17	0.18	1718.53	1.4	1715.32	2.7	1710.73	0.39	1705.21	0.81	1709.70	4.3	1719.01	0.80	1718.73	3.6	1704.35	1.3	1713.81	7.7	< 1707.89
12/14/17	0.18	1718.51	1.4	1715.11	2.6	1710.69	0.51	1706.30	0.78	1710.09	4.3	1718.96	0.79	1718.67	3.6	1707.09	1.3	1714.68	7.7	< 1707.89
12/15/17	0.16	1718.45	1.4	1714.71	2.6	1710.96	0.51	1706.38	0.74	1711.07	4.3	1719.03	0.79	1718.72	3.5	1705.83	1.2	1715.03	7.7	< 1707.89
12/16/17	0.16	1718.49	1.5	1714.67	2.6	1710.96	0.49	1706.61	0.73	1710.89	4.3	1719.03	0.79	1718.92	3.5	1705.91	1.2	1714.87	7.7	< 1707.89
12/17/17	0.08	1717.76	1.5	1714.66	2.6	1710.96	0.47	1709.40	0.75	1710.56	4.3	1718.97	0.75	1719.00	3.5	1706.89	1.2	1714.79	7.7	< 1707.89
12/18/17 ³	0.14	1718.36	1.4	1714.90	2.5	1710.97	0.37	1711.27	0.74	1710.77	4.4	1718.98	0.71	1719.06	2.2	1715.00	1.3	1714.88	7.8	< 1707.89
12/19/17	0.08	1718.86	1.4	1715.32	2.6	1710.98	0.38	1711.38	0.74	1711.79	4.3	1719.02	0.71	1719.10	2.2	1715.39	1.2	1715.08	7.7	< 1707.89
12/20/17	0.11	1718.56	1.4	1715.21	2.6	1711.00	0.37	1711.62	0.70	1711.81	4.3	1719.05	0.72	1719.08	3.0	1709.57	1.2	1715.12	7.7	< 1707.89
12/21/17	0.15	1718.36	1.4	1715.16	2.6	1710.99	0.37	1711.61	0.70	1711.79	4.3	1719.00	0.72	1719.17	3.6	1708.14	1.2	1715.12	7.7	< 1707.89
12/22/17	0.16	1718.41	1.4	1715.01	2.6	1710.98	0.37	1711.47	0.76	1707.47	4.3	1719.04	0.42	1721.09	3.7	1701.59	1.2	1715.01	7.7	< 1707.89
12/23/17	0.14	1718.35	1.4	1714.94	2.6	1711.00	0.37	1711.47	0.87	1707.49	4.4	1719.07	0.27	1720.04	3.7	1704.14	1.2	1715.50	7.7	< 1707.89
12/24/17	0.16	1718.26	1.4	1714.97	2.5	1711.00	0.37	1711.81	0.87	1707.50	4.4	1719.11	0.35	1720.34	3.6	1705.06	1.1	1715.47	7.8	< 1707.89
12/25/17	0.14	1718.29	1.4	1714.87	2.5	1710.98	0.36	1711.83	0.87	1707.54	4.4	1719.11	0.42	1720.20	3.5	1704.79	1.2	1715.46	7.8	< 1707.89
12/26/17	0.18	1717.66	1.4	1714.74	2.5	1710.99	0.35	1711.86	0.85	1708.95	4.4	1719.08	0.42	1720.21	3.5	1705.46	1.2	1715.57	7.8	< 1707.89
12/27/17	0.19	1718.30	1.4	1714.59	2.6	1710.99	0.35	1712.17	0.83	1708.60	4.4	1719.09	0.44	1720.18	3.5	1707.18	1.1	1715.58	7.8	< 1707.89
12/28/17	0.15	1718.60	1.4	1714.23	2.6	1710.99	0.35	1712.18	0.85	1707.46	4.3	1719.09	0.45	1720.16	3.5	1706.38	1.2	1712.74	7.8	< 1707.89
12/29/17	0.18	1718.45	1.4	1714.16	2.4	1711.01	0.35	1712.32	0.87	1707.44	4.2	1719.13	0.29	1720.58	3.5	1710.67	1.3	1714.23	7.8	< 1707.89
12/30/17	0.22	1718.49	1.5	1714.26	2.4	1711.01	0.34	1712.53	0.88	1707.99	4.2	1719.18	0.29	1720.61	3.3	1711.63	1.2	1715.25	7.5	< 1707.89
12/31/17	0.16	1718.47	1.4	1714.32	2.5	1711.01	0.33	1712.52	0.88	1707.95	4.2	1719.17	0.29	1720.63	3.3	1711.68	1.2	1715.42	7.5	< 1707.89
Monthly Average	0.17	1718.11	1.4	1714.91	2.7	1710.86	0.39	1710.92	0.79	1709.74	4.3	1719.04	0.66	1719.24	3.4	1707.68	1.3	1713.68	7.7	< 1707.89
Analytical ¹	Conc (mg/L)	Date	Conc (mg/L)	Date	Conc (mg/L)	Date	Conc (mg/L)	Date	Conc (mg/L)	Date	Conc (mg/L)	Date	Conc (mg/L)	Date	Conc (mg/L)	Date	Conc (mg/L)	Date	Conc (mg/L)	Date
Perchlorate	1,100	12/13/2017	800	12/12/2017	540	12/12/2017	1,600	12/13/2017	1,600	12/13/2017	920	12/12/2017	860	12/13/2017	1,000	12/13/2017	990	12/12/2017	450	12/12/2017
Hexavalent Chromium	17	12/13/2017	0.25	12/12/2017	0.90	12/12/2017	21	12/13/2017	19	12/13/2017	15	12/12/2017	17	12/13/2017	8.8	12/13/2017	0.43	12/12/2017	9.2	12/12/2017
Total Chromium	19	12/13/2017	0.28	12/12/2017	0.92	12/12/2017	20	12/13/2017	20	12/13/2017	16	12/12/2017	18	12/13/2017	8.6	12/13/2017	0.41	12/12/2017	9.4	12/12/2017

Notes:
 Flow reported as gpm is a daily average calculated from the totalizer reading.
 1: Analytical results are reported from TestAmerica.
 2: A "<" preceding the water elevation indicates the reported water level is below the transducer. Average monthly water elevation calculations include the transducer elevation in instances where the water level is below or above the transducer.
 3: On 12/04, 12/11, and 12/18, the IWF totalizers were reset. Instantaneous flow rate at the time of the water level measurement was used for these dates.
 5: On 12/08, I-AR, I-G, and I-Q adjusted to meet flow target as directed by the Trust.
 6: On 12/19, I-AR and I-X adjusted to meet flow target as directed by the Trust.
 8: On 12/10, I-AA, I-C, I-L, I-P and I-U adjusted to meet flow target as directed by the Trust.
 9: On 12/20, I-AA, I-Q and I-X adjusted to meet flow target as directed by the Trust.
 10: On 12/22, I-AA, I-B, I-H, I-N, I-U, I-W and I-X adjusted to meet flow target as directed by the Trust.
 11: On 12/18, I-D, I-E, I-N and I-X adjusted to meet flow target as directed by the Trust.
 12: On 12/01, 12/02, 12/09 and 12/23, I-G and I-Q adjusted to meet flow target as directed by the Trust.
 13: On 12/03, I-G, I-Q, and I-Y adjusted to meet flow target as directed by the Trust.
 16: On 12/05, I-M and I-X adjusted to meet flow target as directed by the Trust.
 18: On 12/07, 12/28, and 12/29, I-Q adjusted to meet flow target as directed by the Trust.
 19: On 12/22, I-W offline at 6:13 pm. On 12/23, pump motor was replaced and back online at 10:23 am.

Table 4 - Treatment Plant Operational Metrics

Nevada Environmental Response Trust Groundwater Extraction and Treatment System Enhanced Operational Metrics																
Date	LS #2	GWTP Effluent ¹				GW-11 Influent ¹				FBR Plant Influent ¹						
	Flow (gpm)	Flow (gpm)	TA - Cr (TR) (mg/L)	TA - Cr (VI) (mg/L)	TA - ClO ₂ (mg/L)	Flow ⁴ (gpm)	TA - Cr (TR) (mg/L)	TA - Cr (VI) (mg/L)	TA - ClO ₂ (mg/L)	Flow ⁵ (gpm)	TA - ClO ₂ (mg/L)	ETI - ClO ₂ ⁶ (mg/L)	TA - ClO ₂ (mg/L)	TA - NO ₂ - N (mg/L)	TA - Cr (TR) (mg/L)	TA - Cr (VI) (mg/L)
12/01/17	961	80				0.00				1,055		250				
12/02/17	962	78				0.00				1,039	280	246				
12/03/17	962	79				0.00				1,041		258				
12/04/17 ³	1,000	79				0.00				1,082		264	150	12	0.034	0.018
12/05/17	968	80				0.00				1,047		243				
12/06/17	960	81				0.00				1,041		244				
12/07/17	962	80	0.55	ND	810	0.00				1,042		223				
12/08/17	961	80				0.00				1,041		218				
12/09/17	972	80				0.00				1,052	290	215				
12/10/17	961	79				0.00				1,040		233				
12/11/17 ³	1,055	80				0.00				1,135		65		13	0.032	0.021
12/12/17	988	79				0.00				1,068		65				
12/13/17	960	80				0.00				1,055		83				
12/14/17	960	80	1.3	ND	720	0.00				1,120		223				
12/15/17	960	75				0.00				1,099		229				
12/16/17	959	73				0.00				1,084	230	217				
12/17/17	959	80				0.00				1,074		166				
12/18/17 ³	993	77				1.4	0.24	0.064	55	1,081		245		13	0.033	0.024
12/19/17	958	75				0.00				1,052		245				
12/20/17	956	78	0.35	ND	730	0.00				1,068		230				
12/21/17	957	79				0.00				1,086		230				
12/22/17	956	79				0.00				1,071		227				
12/23/17	938	81				0.00				1,084	250	210				
12/24/17	962	72				0.00				1,097		193				
12/25/17	962	80				0.00				1,087		229				
12/26/17	949	79				0.00				1,088		241				
12/27/17	956	79	0.35	ND	700	0.00				1,060		237		12 F1	0.045	0.030
12/28/17	948	79				0.00				1,113		220				
12/29/17	957	78				0.00				1,073		230				
12/30/17	933	78				0.00				1,052	250	225				
12/31/17	943	78				0.00				1,053		241				
Monthly Average ²	964	79	0.62	ND	744	0.04	0.24	0.064	55	1,070	259	214	150	12	0.037	0.024

Notes:

- Flow reported as gpm is a daily average calculated from the totalizer reading.
- ND = Not detected above laboratory method detection limit (ClO₂ = 0.5 ug/L; ClO₃ = 10 ug/L; NO₂-N = 0.055 mg/L, Cr(VI) = 0.25 ug/L).
- F1 = MS and/or MSD Recovery is outside acceptance limits.
- 1: ETI = Envirogen internal process control data, TA = TestAmerica data.
- 2: All average concentrations reported are monthly flow weighted averages.
- 3: On 12/04, 12/11, and 12/18, LS #2 totalizer was reset. Instantaneous flow rate at the time of the water level measurement was used for these dates.
- 4: Flows bypassed GW-11 Influent and FBR Plant Influent totalizers from 12/01 to 12/31 due to FBR plant influent strainers clogging, except for monthly sampling.
- 5: From 12/01 to 12/31, the FBR Plant Influent Flow was estimated by summing flows for LS #2, GWTP Effluent, and GW-11 Effluent.
- 6: Flow to the FBR Plant Influent from T-205 Effluent (AP-5 Wash Water) was offline from 11:24 am on 12/11 to 6:34 pm on 12/13, awaiting a delayed ethanol delivery to the plant.

Table 4 - Treatment Plant Operational Metrics

Nevada Environmental Response Trust Groundwater Extraction and Treatment System Enhanced Operational Metrics														
Date	1st Stage FBR ⁷			2nd Stage FBR ⁷			FBR Plant Effluent ¹							
	Flow (gpm)	pH (s.u.)	ORP (mV)	Flow (gpm)	pH (s.u.)	ORP (mV)	Flow ⁸ (gpm)	TA - ClO ₄ (mg/L)	ETI - ClO ₄ (mg/L)	TA - ClO ₃ (mg/L)	TA - Cr (TR) (mg/L)	TA - Cr (VI) (mg/L)	TA - NO ₃ - N (mg/L)	ETI - Turbidity (NTU)
12/01/17	1,158	6.7	-363	1,036	6.6	-345	1,091		ND					10
12/02/17	1,095	6.7	-360	1,046	6.5	-348	967	ND	ND					7
12/03/17	1,160	6.7	-362	792	6.6	-347	1,072		ND					3
12/04/17	1,159	6.6	-363	993	6.5	-345	1,083		ND	0.069	0.011	ND	ND	3
12/05/17	1,159	6.6	-296	1,067	6.5	-288	1,058		ND					3
12/06/17	1,165	6.6	-328	910	6.5	-299	1,080		ND					11
12/07/17	1,155	6.6	-336	967	6.5	-308	1,063		ND					15
12/08/17	1,166	6.6	-352	1,031	6.5	-318	1,065		ND					6
12/09/17	1,147	6.5	-353	932	6.5	-328	1,058	ND	ND					6
12/10/17	1,127	6.5	-352	739	6.5	-330	1,052		ND					12
12/11/17	596	6.7	-392	374	6.8	-349	854		ND		0.0072	ND	ND	8
12/12/17	625	6.8	-317	690	6.8	-352	505		ND					10
12/13/17	1,253	6.6	-285	1,050	6.7	-352	693		ND					8
12/14/17	1,237	6.6	-360	964	6.6	-351	1,158		ND					3
12/15/17	1,227	6.6	-362	1,094	6.6	-352	1,143		ND					12
12/16/17	1,199	6.6	-360	899	6.5	-351	1,129	ND	ND					4
12/17/17	1,210	6.5	-362	1,009	6.5	-350	1,113		ND					2
12/18/17	1,180	6.5	-371	920	6.5	-351	1,081		ND		0.0055	ND	ND	6
12/19/17	1,197	6.5	-369	1,051	6.5	-353	1,060		ND					4
12/20/17	1,201	6.5	-329	1,005	6.6	-352	1,078		ND					6
12/21/17	1,230	6.5	-354	1,083	6.6	-351	1,120		ND					6
12/22/17	1,182	6.5	-360	820	6.5	-360	1,105		ND					5
12/23/17	1,239	6.5	-364	864	6.5	-351	1,078	ND	ND					8
12/24/17	1,230	6.5	-342	967	6.5	-355	1,140		ND					7
12/25/17	1,205	6.5	-338	966	6.5	-363	1,124		ND					2
12/26/17	1,199	6.5	-340	923	6.5	-359	1,099		ND					14
12/27/17	1,240	6.5	-346	1,044	6.6	-360	1,089		ND		0.010	ND	ND	14
12/28/17	1,235	6.6	-358	1,019	6.6	-361	1,131		ND					6
12/29/17	1,199	6.6	-347	818	6.5	-365	1,007		ND					7
12/30/17	1,178	6.6	-384	992	6.5	-358	1,083	ND	ND					15
12/31/17	1,189	6.6	-381	982	6.5	-366	1,080		ND					8
Monthly Average ²	1153	6.6	-351	937	6.6	-346	1,047	ND	ND	0.069	0.0086	ND	ND	7

Notes:

Flow reported as gpm is a daily average calculated from the totalizer reading.

ND = Not detected above laboratory method detection limit (ClO₄ = 0.5 ug/L; ClO₃ = 10 ug/L; NO₃-N = 0.055 mg/L, Cr(VI) = 0.25 ug/L).

1: ETI = Envirogen internal process control data, TA = TestAmerica data.

2: All average concentrations reported are monthly flow weighted averages.

7: For 1st and 2nd stage FBRs, flow measurements are collected from the influent lines and pH and ORP samples are collected from the recycle lines.

8: FBR Plant Effluent represents effluent discharged to Las Vegas Wash. While this may represent the entirety of the FBR Plant effluent, any diversions to GW-11 are subtracted from the original effluent flow.

GW-11 Level Monitoring		
Date	Field Measurement (ft)	Volume (MG)
12/15/17	30.2	36.4
12/31/17	30.5	36.0

GW-11 Leak Detection Monitoring				
Date	Amount Pumped ¹ (gallons)			
	NW Corner	NE Corner	SW Corner	SE Corner
12/14/17	0	3,754	0	0
12/28/17	0	31	0	0

GW-11 Composite Sample ^{2 3}		
Analytes	Concentration	Units
Perchlorate	10	mg/L
Chlorate	12	mg/L
Ammonia as N	3.3	mg/L
Total Phosphorus	0.066	mg/L
Total Dissolved Solids (TDS)	9,250	mg/L
Total Suspended Solids (TSS)	21	mg/L
pH	8.4	s.u.
Calcium	450	mg/L
Iron	0.30	mg/L
Chromium (total)	0.017	mg/L
Chromium VI	ND	mg/L
Chloride	3,225	mg/L
Nitrate as N	ND	mg/L
Sulfate	2,625	mg/L

Notes:

ND = Not detected above laboratory method detection limit (NH₃-N= 0.1 mg/L; Total P = 0.025 ug/L; Cr(VI) = 0.25 ug/L).

1: Pumping occurs over three consecutive days. The total amount pumped over the three day period is listed with the last day pumping occurred.

2: Corner Composite Sample collected quarterly, most recent sampling results presented. Sampled on: November 15, 2017 by Envirogen.

3: The laboratory inadvertently ran each corner sample separately rather than as a composite sample. The average of the four results are presented for each analyte.

Nevada Environmental Response Trust Groundwater Extraction and Treatment System Enhanced Operational Metrics						
Date	Flow ¹ (gpm)	FBR Influent Concentration			Influent Function Load ² (lbs/day)	6 Month Rolling Average (lbs/day)
		ClO ₄ ³ (mg/L)	NO ₃ as N (mg/L)	ClO ₃ (mg/L)		
Jan 2017	1,005	100	9.9	170	675	568
Feb 2017	1,017	103	11	170	697	588
Mar 2017	951	99	12	180	672	621
Apr 2017	1,066	87	13	190	759	652
May 2017	1,102	88	12	190	773	702
June 2017	1,047	95	12	170	720	716
July 2017	1,058	118	12	170	777	733
Aug 2017	1,072	124	9.8	170	773	746
Sep 2017	1,070	114	11	190	806	768
Oct 2017	1,060	180	11	130	821	778
Nov 2017	1,042	279	11	130	1,030	821
Dec 2017	1,070	259	12	150	1,072	880

Notes:

Concentrations and flow are presented as monthly average.

1: Flow used in loading calculation is average monthly FBR effluent flow to be consistent with historical loading calculations.

2: FBR loading calculated as $[(0.9 \cdot \text{NO}_3 \text{ as N} + 0.17 \cdot \text{ClO}_3 + 0.18 \cdot \text{ClO}_4) \cdot \text{Flow} \cdot 1440 / 1000000 \cdot 8.34]$.

3: Treatment of AP-5 wash water began on July 17, 2017 and was suspended on August 4, 2017 to allow Envirogen to evaluate internal process controls to meet discharge limits. Treatment of AP-5 wash water resumed on August 31, 2017.

Table 7 - AP Area Operational Metrics

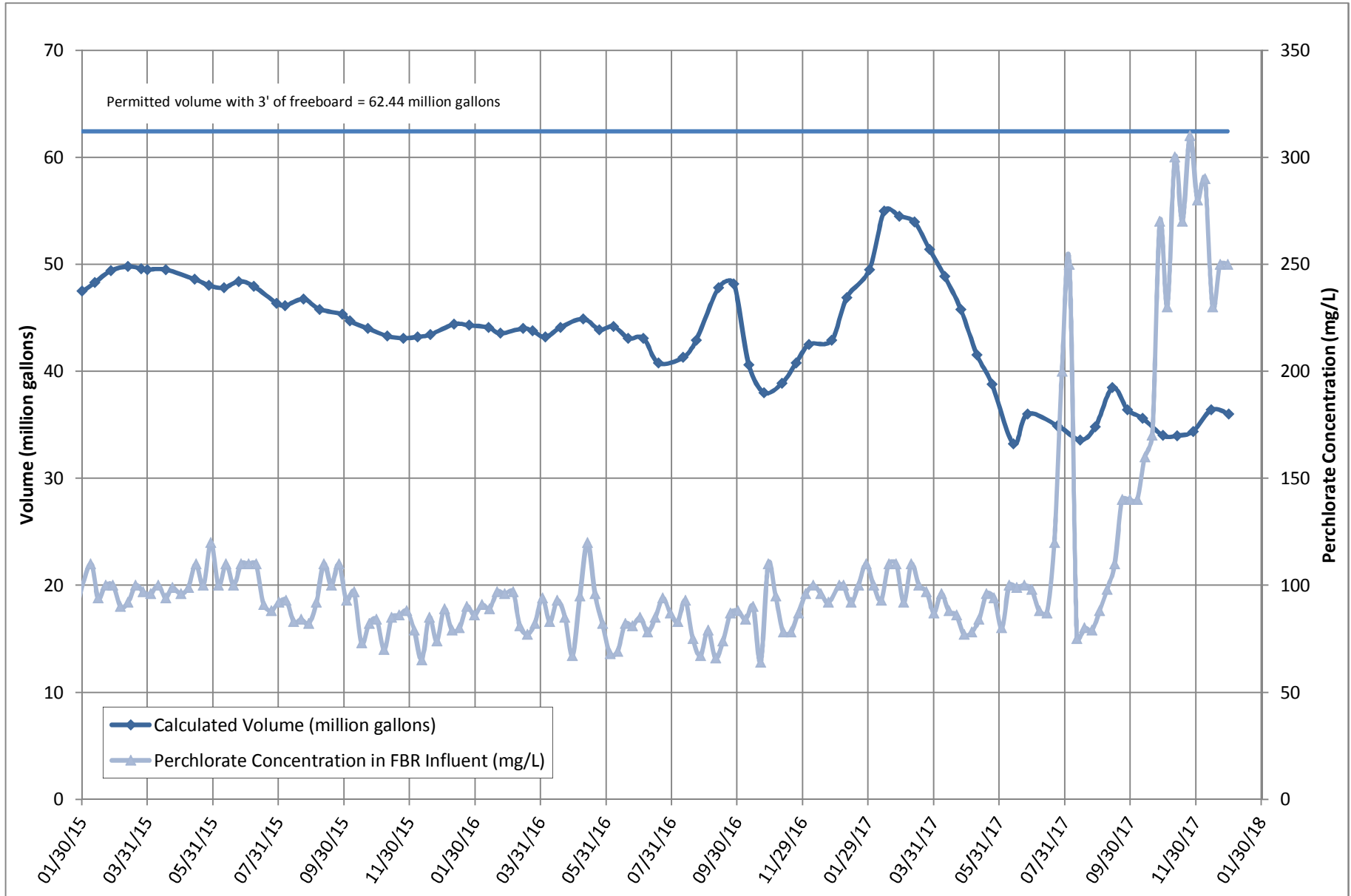
Nevada Environmental Response Trust Groundwater Extraction and Treatment System Enhanced Operational Metrics																
Date	E1-1				E1-2				E1-3				E2-1			
	Flow (gpm)	Water Elevation (ft amsl)	Cr (VI) ³ (mg/L)	ClO ₂ ³ (mg/L)	Flow (gpm)	Water Elevation (ft amsl)	Cr (VI) ³ (mg/L)	ClO ₂ ³ (mg/L)	Flow (gpm)	Water Elevation (ft amsl)	Cr (VI) ³ (mg/L)	ClO ₂ ³ (mg/L)	Flow (gpm)	Water Elevation (ft amsl)	Cr (VI) ³ (mg/L)	ClO ₂ ³ (mg/L)
12/01/17	1.7	1722.48			1.2	1713.19			0.88	1713.01			1.4	1714.37		
12/02/17	1.7				1.2				0.88				1.4			
12/03/17	1.7				1.2				0.88				1.4			
12/04/17	1.8	1722.54	0.029	470	1.4	1713.88	0.045	1,500	1.0	1713.12	0.13	925	1.4	1713.76	0.029	220
12/05/17	1.6	1722.31			1.2	1711.18			0.72	1710.87			1.3	1717.25		
12/06/17	2.0	1722.26			1.4	1711.38			0.97	1713.32			1.4	1715.11		
12/07/17	1.9	1721.56			1.3	1710.02			0.79	1709.62			1.4	1715.46		
12/08/17	2.0	1721.80			1.2	1709.90			0.76	1714.31			1.4	1714.95		
12/09/17	2.0				1.2				0.76				1.4			
12/10/17	2.0				1.2				0.76				1.4			
12/11/17	2.0	1721.77	0.030	570	1.4	1711.62	0.050	1,600	0.88	1715.61	0.12	970	1.3	1714.58	0.027	260
12/12/17	1.8	1721.97			1.2	1710.23			0.76	1713.49			1.3	1718.76		
12/13/17	2.1	1721.86			1.3	1711.15			0.85	1714.17			1.3	1717.96		
12/14/17	1.9	1721.73			1.2	1710.20			0.75	1713.31			1.2	1718.00		
12/15/17	2.0	1721.77			1.3	1711.19			0.79	1714.22			1.4	1717.22		
12/16/17	2.0				1.3				0.79				1.4			
12/17/17	2.0				1.3				0.79				1.4			
12/18/17	1.7	1721.69	0.030	520	1.2	1711.86	0.050	1,700	0.73	1714.87	0.13	1,100	1.2	1715.05	0.029	230
12/19/17	2.1	1722.04			1.5	1711.06			0.92	1713.83			1.5	1717.97		
12/20/17	1.9	1721.94			1.3	1710.57			0.79	1713.47			1.4	1712.85		
12/21/17	1.6	1721.85			1.0	1711.18			0.65	1713.86			1.2	1712.34		
12/22/17	2.1	1721.95			1.4	1712.47			0.95	1715.12			1.5	1712.30		
12/23/17	2.1				1.4				0.95				1.5			
12/24/17	2.1				1.4				0.95				1.5			
12/25/17	1.4	1721.65			0.93	1711.00			0.48	1709.62			0.82	1717.21		
12/26/17	1.9	1722.20	0.030	540	1.2	1712.93	0.050	1,400	0.71	1718.82	0.14	890	1.3	1717.31	0.028	170
12/27/17	1.9	1721.83			1.2	1712.41			0.72	1716.82			1.2	1713.15		
12/28/17	2.1	1721.73			1.3	1712.36			0.86	1716.43			1.4	1717.67		
12/29/17	2.0	1721.53			1.2	1711.41			0.78	1714.61			1.3	1715.25		
12/30/17	2.0				1.2				0.78				1.3			
12/31/17	2.0				1.2				0.78				1.3			
Monthly Average ^e	1.9	1721.93	0.030	528	1.2	1711.49	0.049	1,554	0.81	1713.93	0.13	974	1.3	1715.64	0.028	221

Notes:
 Flow reported as gpm is a daily average calculated from the totalizer reading. *Italicized* flow rates indicate a totalizer reading was not recorded that day.
 1: Analytical results are reported from TestAmerica.
 2: All average concentrations reported are monthly flow weighted averages.
 3: Duplicates taken on 12/26 for well E1-1; average of both values is presented for calculation purposes.
 4: Duplicates taken on 12/04 for well E1-3; average of both values is presented for calculation purposes.

Nevada Environmental Response Trust Groundwater Extraction and Treatment System Enhanced Operational Metrics																
Date	E2-2				E2-3				E2-4				E2-5			
	Flow (gpm)	Water Elevation (ft amsl)	Cr (VI) ¹ (mg/L)	ClO ₂ ¹ (mg/L)	Flow (gpm)	Water Elevation (ft amsl)	Cr (VI) ¹ (mg/L)	ClO ₂ ¹ (mg/L)	Flow (gpm)	Water Elevation (ft amsl)	Cr (VI) ^{1 5} (mg/L)	ClO ₂ ^{1 5} (mg/L)	Flow (gpm)	Water Elevation (ft amsl)	Cr (VI) ^{1 6} (mg/L)	ClO ₂ ^{1 6} (mg/L)
12/01/17	1.9	1713.89			2.0	1716.55			2.0	1716.09			0.77	1716.00		
12/02/17	1.9				2.0				2.0				0.77			
12/03/17	1.9				2.0				2.0				0.77			
12/04/17	1.7	1714.31	0.018	460	1.9	1717.17	0.017	670	2.2	1718.40	0.024	970	0.72	1716.76	0.039	1,800
12/05/17	1.7	1719.87			1.9	1720.44			1.9	1718.67			0.74	1719.44		
12/06/17	1.8	1716.60			2.1	1716.56			2.2	1718.14			0.81	1716.40		
12/07/17	1.7	1716.60			1.9	1716.66			2.1	1717.56			0.77	1716.38		
12/08/17	1.7	1717.02			2.0	1717.14			2.1	1717.45			0.75	1716.61		
12/09/17	1.7				2.0				2.1				0.75			
12/10/17	1.7				2.0				2.1				0.75			
12/11/17	1.9	1716.27	0.018	480	1.9	1716.45	0.016	720	2.1	1718.08	0.023	980	0.78	1717.35	0.040	1,900
12/12/17	1.9	1715.91			1.9	1718.66			2.1	1716.43			0.78	1716.12		
12/13/17	2.0	1714.14			2.0	1716.58			2.2	1716.61			0.80	1716.50		
12/14/17	1.8	1714.10			1.7	1717.08			2.0	1716.83			0.70	1716.42		
12/15/17	2.0	1714.57			2.1	1719.26			2.1	1717.52			0.72	1717.60		
12/16/17	2.0				2.1				2.1				0.72			
12/17/17	2.0				2.1				2.1				0.72			
12/18/17	1.5	1713.54	0.019	490	1.6	1715.64	0.015	620	2.1	1717.67	0.038	1,750	0.69	1719.01	0.020	930
12/19/17	1.9	1719.37			2.0	1721.49			2.4	1719.01			0.86	1721.01		
12/20/17	1.8	1715.47			1.8	1717.12			2.1	1715.66			0.77	1715.04		
12/21/17	1.5	1715.49			1.5	1717.88			1.5	1716.23			0.65	1715.80		
12/22/17	1.9	1716.37			2.2	1719.69			2.2	1721.01			0.91	1717.38		
12/23/17	1.9				2.2				2.2				0.91			
12/24/17	1.9				2.2				2.2				0.91			
12/25/17	1.3	1715.10			1.5	1714.47			1.6	1717.38			0.64	1711.29		
12/26/17	1.7	1714.20	0.020	540	1.9	1721.56	0.010	390	1.9	1717.98	0.020	810	0.67	1717.23	0.042	1,800
12/27/17	1.7	1715.14			1.9	1715.80			1.9	1717.10			0.73	1718.09		
12/28/17	1.9	1715.47			2.1	1715.74			1.9	1718.14			0.91	1717.64		
12/29/17	1.8	1715.84			2.0	1717.55			2.1	1726.08			0.82	1716.19		
12/30/17	1.8				2.0				2.1				0.82			
12/31/17	1.8				2.0				2.1				0.82			
Monthly Average ²	1.8	1715.68	0.019	493	1.9	1717.59	0.014	598	2.1	1718.00	0.026	1,136	0.77	1716.87	0.035	1,599

Notes:
 Flow reported as gpm is a daily average calculated from the totalizer reading.
 1: Analytical results are reported from TestAmerica.
 2: All average concentrations reported are monthly flow weighted averages.
 5: Duplicates taken on 12/18 for well E2-4; average of both values is presented for calculation purposes.
 6: Duplicates taken on 12/11 for well E2-5; average of both values is presented for calculation purposes.

Figure 1 - GW-11 Pond Volume and FBR Influent Perchlorate Concentration



Notes:

1. Volumes as indicated prior to October 2014 calculated and published by ENVIRON
2. Treatment of AP-5 wash water began on July 17, 2017 and was suspended on August 4, 2017 to allow Envirogen to evaluate internal process controls to meet discharge limits. Treatment of AP-5 wash water resumed on August 31, 2017.

Figure 2 - FBR Equivalent Loading Calculation

