

Nevada Environmental Response Trust Groundwater Extraction and Treatment System Enhanced Operational Metrics																			
Date	LS #1	PC-116R (East Well)		PC-99R2/R3 (Center Well)		PC-115R (West Well)		PC-117		PC-118		PC-119		PC-120		PC-121		PC-133	
	Flow ⁴ (gpm)	Flow ⁴ (gpm)	Water Elevation (ft amsl)	Flow ⁴ (gpm)	Water Elevation (ft amsl)	Flow ⁴ (gpm)	Water Elevation (ft amsl)	Flow ⁴ (gpm)	Water Elevation (ft amsl)	Flow ⁷ (gpm)	Water Elevation (ft amsl)	Flow ⁷ (gpm)	Water Elevation (ft amsl)	Flow ⁸ (gpm)	Water Elevation (ft amsl)	Flow (gpm)	Water Elevation (ft amsl)	Flow (gpm)	Water Elevation ² (ft amsl)
08/01/17	791	168	1535.97	85	1541.08	130	1540.75	111	1535.97	72	1544.89	68	1546.59	80	1546.81	36	1547.81	10	1520.01
08/02/17	584	165	1535.91	83	1540.92	127	1540.83	113	1535.88	70	1544.87	66	1546.57	75	1546.78	33	1547.78	9.6	< 1520.00
08/03/17	585	167	1535.88	85	1540.93	128	1540.81	115	1535.85	72	1544.85	67	1546.56	76	1546.76	34	1547.77	9.0	< 1520.00
08/04/17	586	167	1535.89	84	1540.91	129	1540.82	115	1535.84	71	1544.85	67	1546.56	76	1546.77	34	1547.77	9.7	< 1520.00
08/05/17	585	168	1535.92	84	1541.08	130	1540.85	116	1535.85	72	1544.89	68	1546.60	77	1546.80	34	1547.81	9.8	1520.01
08/06/17	585	167	1535.94	85	1541.10	129	1540.85	116	1535.84	72	1544.89	67	1546.61	77	1546.81	33	1547.82	9.0	1520.01
08/07/17 ³	601	168	1535.92	89	1540.75	129	1540.83	115	1535.82	72	1544.89	67	1546.60	77	1546.80	34	1547.81	10	1520.01
08/08/17	585	167	1535.89	85	1541.05	129	1540.82	115	1535.78	71	1544.87	67	1546.58	76	1546.78	34	1547.79	9.0	1520.01
08/09/17	585	168	1535.85	84	1540.68	130	1540.79	116	1535.76	71	1544.84	67	1546.56	77	1546.76	34	1547.77	9.7	< 1520.00
08/10/17	585	166	1535.82	84	1541.05	128	1540.77	114	1535.74	71	1544.83	66	1546.55	77	1546.75	34	1547.75	9.0	< 1520.00
08/11/17	585	168	1535.85	84	1540.85	129	1540.77	116	1535.73	71	1544.83	66	1546.54	76	1546.74	33	1547.74	9.8	< 1520.00
08/12/17	584	170	1535.84	85	1540.91	132	1540.76	117	1535.72	72	1544.82	67	1546.54	78	1546.72	35	1547.73	9.1	1520.01
08/13/17	585	164	1535.82	82	1541.20	126	1540.74	113	1535.69	69	1544.80	65	1546.52	75	1546.71	33	1547.72	9.6	< 1520.00
08/14/17 ³	602	168	1535.80	77	1541.26	129	1540.72	115	1535.67	71	1544.79	66	1546.50	76	1546.69	34	1547.70	7.7	< 1520.00
08/15/17	585	167	1535.76	84	1540.87	129	1540.70	115	1535.64	71	1544.77	65	1546.48	77	1546.67	34	1547.68	9.7	1520.01
08/16/17	594	168	1535.75	84	1540.97	129	1540.69	116	1535.63	71	1544.75	66	1546.47	77	1546.65	34	1547.66	9.0	< 1520.00
08/17/17	591	166	1535.76	84	1540.90	129	1540.67	114	1535.61	70	1544.74	65	1546.46	76	1546.64	34	1547.65	9.0	1520.01
08/18/17	588	168	1535.93	84	1540.93	128	1540.71	115	1535.75	71	1544.75	65	1546.46	77	1546.65	34	1547.65	9.8	< 1520.00
08/19/17	585	167	1535.87	84	1540.92	129	1540.68	115	1535.69	70	1544.73	65	1546.44	76	1546.63	34	1547.62	9.0	< 1520.00
08/20/17	587	168	1535.85	85	1540.88	129	1540.66	116	1535.66	71	1544.71	65	1546.43	77	1546.62	33	1547.60	9.7	< 1520.00
08/21/17 ³	512	167	1535.82	83	1540.87	129	1540.65	115	1535.64	70	1544.70	65	1546.42	77	1546.61	34	1547.60	8.3	< 1520.00
08/22/17	588	167	1535.78	84	1540.69	129	1540.60	115	1535.59	71	1544.64	65	1546.34	85	1546.15	34	1547.52	9.7	< 1520.00
08/23/17	428	165	1535.86	83	1540.92	126	1540.62	112	1535.94	70	1544.54	64	1546.31	90	1546.14	33	1547.52	9.8	< 1520.00
08/24/17	612	165	1535.90	83	1541.05	127	1540.61	111	1535.91	73	1544.55	66	1546.31	90	1546.15	34	1547.52	9.6	< 1520.00
08/25/17	656	167	1535.63	84	1540.90	129	1540.18	112	1535.64	94	1542.59	88	1545.20	90	1545.72	33	1547.25	9.0	< 1520.00
08/26/17	717	172	1535.55	85	1540.64	132	1540.09	111	1535.75	127	1542.49	123	1545.11	92	1545.63	36	1547.17	10	< 1520.00
08/27/17	723	166	1535.47	82	1540.66	127	1540.02	105	1535.72	122	1542.42	118	1545.04	90	1545.57	33	1547.11	9.7	< 1520.00
08/28/17 ³	615	167	1535.41	87	1540.87	128	1539.97	112	1535.68	123	1542.37	119	1544.99	90	1545.52	34	1547.06	10	1520.03
08/29/17	717	168	1535.37	83	1540.68	130	1539.93	106	1535.63	124	1542.33	120	1544.95	91	1545.48	34	1547.02	9.1	1520.08
08/30/17	718	162	1535.32	80	1541.13	125	1539.88	110	1535.53	119	1542.28	116	1544.91	87	1545.44	33	1546.99	9.5	1520.04
08/31/17	717	167	1535.26	82	1540.68	129	1539.86	112	1535.47	123	1542.26	119	1544.89	91	1545.42	34	1546.97	9.1	< 1520.00
Monthly Average	612	167	1535.76	84	1540.91	129	1540.57	114	1535.73	82	1544.24	77	1546.16	81	1546.40	34	1547.56	9.4	1520.01
Analytical ¹		Conc (mg/L)	Date	Conc ² (mg/L)	Date	Conc (mg/L)	Date	Conc (mg/L)	Date	Conc (mg/L)	Date	Conc (mg/L)	Date	Conc (mg/L)	Date	Conc (mg/L)	Date	Conc ² (mg/L)	Date
Perchlorate		16	8/16/2017	19	8/16/2017	12	8/16/2017	7.0	8/16/2017	5.1	8/16/2017	0.78	8/16/2017	0.074	8/16/2017	0.16	8/16/2017	1.3	8/16/2017
Hexavalent Chromium		0.0016	8/16/2017	ND	8/16/2017	ND	8/16/2017	0.0019	8/16/2017	ND	8/16/2017	ND	8/16/2017	ND	8/16/2017	ND	8/16/2017	ND	8/16/2017
Total Chromium		ND	8/16/2017	ND	8/16/2017	ND	8/16/2017	0.0027	8/16/2017	ND	8/16/2017	ND	8/16/2017	ND	8/16/2017	ND	8/16/2017	ND	8/16/2017

- Notes:
- Flow reported as gpm is a daily average calculated from the totalizer reading.
 - ND = Not detected above laboratory method detection limit (Cr(TR)=2.5 ug/L, Cr(VI) =0.20 ug/L).
 - 1: Analytical results are reported from TestAmerica.
 - 2: A "*" preceding the water elevation indicates the reported water level is below the transducer. Average monthly water elevation calculations include the transducer elevation in instances where the water level is below the transducer.
 - 3: On 08/07, 08/14, 08/21, and 08/28, SWF and LS #1 totalizers were reset. Instantaneous flow rate at the time of the water level measurement was used for these dates.
 - 4: On 08/23 from 9:13 am to 2:47 pm, flow from LS #1, PC-116R, PC-99R2/R3, PC-115R, and PC-117 joined the flow of the other SWF wells to the IX system, during the planned replacement of the flow meter for LS #2.
 - 5: Duplicates taken on 08/16 for well PC-99R2/R3; average of both values is presented and used for calculation.
 - 6: On 08/01, 08/26, 08/27, and 08/28 PC-117 offline intermittently due to electrical issues.
 - 7: On 08/25, flow for PC-118 and PC-119 was adjusted to meet flow target as directed by the Trust.
 - 8: On 08/22, PC-120 valve was discovered to be slightly closed and was opened to 100% flow.

Nevada Environmental Response Trust Groundwater Extraction and Treatment System Enhanced Operational Metrics																	
Date	LS #3 Flow (gpm)	ART-1/1A		ART-2/2A		ART-3/3A		ART-4/4A		ART-9		ART-7A/7B		ART-8/8A		PC-150	
		Flow (gpm)	Water Elevation (ft amsl)	Flow ⁴ (gpm)	Water Elevation (ft amsl)	Flow ⁵ (gpm)	Water Elevation (ft amsl)	Flow (gpm)	Water Elevation (ft amsl)	Flow (gpm)	Water Elevation (ft amsl)	Flow ⁷ (gpm)	Water Elevation (ft amsl)	Flow (gpm)	Water Elevation (ft amsl)	Flow ⁸ (gpm)	Water Elevation (ft amsl)
08/01/17	483	43	1583.41	93	1582.38	22	1582.00	1.4	1579.17	47	1581.92	16	1583.91	178	1583.06	1.5	1583.79
08/02/17	409	42	1583.21	152	1582.18	20	1581.86	1.4	1579.13	52	1581.68	18	1583.91	178	1582.88	1.5	1583.81
08/03/17	408	42	1583.11	151	1582.09	20	1581.79	1.4	1579.12	52	1581.85	17	1583.91	177	1582.79	1.5	1583.80
08/04/17	408	42	1583.08	152	1582.05	19	1581.76	2.1	1579.12	52	1581.75	17	1583.91	177	1582.76	1.5	1583.80
08/05/17	408	42	1583.06	152	1582.03	20	1581.75	0.70	1579.12	52	1582.06	17	1583.88	176	1582.74	1.5	1583.81
08/06/17	408	42	1583.04	153	1582.01	19	1581.73	1.4	1579.12	52	1581.79	17	1583.88	177	1582.72	1.5	1583.80
08/07/17 ²	364	42	1583.02	151	1581.99	17	1581.72	1.4	1579.12	51	1581.74	17	1583.88	179	1582.71	1.5	1583.81
08/08/17	406	42	1583.00	152	1581.97	19	1581.70	1.4	1579.12	52	1581.76	17	1583.88	178	1582.69	1.5	1583.79
08/09/17	406	42	1582.98	152	1581.96	19	1581.69	1.4	1579.12	52	1581.93	17	1583.88	177	1582.67	1.5	1583.79
08/10/17	406	43	1582.97	151	1581.94	19	1581.68	1.4	1579.12	52	1581.92	17	1583.88	177	1582.66	1.5	1583.81
08/11/17	407	42	1582.94	152	1581.92	19	1581.66	1.4	1579.12	52	1581.74	16	1583.88	176	1582.64	1.5	1583.80
08/12/17	406	42	1582.92	152	1581.90	19	1581.65	2.0	1579.12	52	1581.85	16	1583.88	176	1582.62	1.5	1583.81
08/13/17	407	42	1582.91	153	1581.88	19	1581.64	1.5	1579.12	52	1581.97	16	1583.91	176	1582.61	0.00	1583.80
08/14/17 ²	414	42	1582.89	151	1581.86	16	1581.62	3.1	1579.12	54	1581.75	16	1583.91	176	1582.59	0.00	1583.81
08/15/17	406	42	1582.87	151	1581.85	19	1581.61	4.2	1579.12	52	1582.03	16	1583.91	178	1582.57	0.81	1576.61
08/16/17	406	42	1582.85	152	1581.83	19	1581.56	3.5	1579.13	51	1581.96	16	1583.91	177	1582.55	1.5	1576.61
08/17/17	405	42	1582.84	151	1581.81	18	1581.52	4.1	1579.13	52	1581.85	16	1583.91	176	1582.54	1.5	1576.61
08/18/17	407	42	1582.82	152	1581.80	19	1581.51	4.9	1579.13	52	1581.92	17	1583.91	176	1582.52	1.5	1576.61
08/19/17	407	42	1582.80	153	1581.78	18	1581.50	4.8	1579.13	52	1582.03	15	1583.91	176	1582.50	1.5	1576.61
08/20/17	406	42	1582.78	152	1581.76	19	1581.49	4.2	1579.13	52	1582.06	17	1583.88	176	1582.49	1.5	1576.61
08/21/17 ²	492	42	1582.77	152	1581.74	18	1581.48	2.0	1579.12	56	1581.92	16	1583.88	179	1582.47	1.5	1576.61
08/22/17	405	42	1582.75	152	1581.73	18	1581.47	4.2	1579.13	52	1581.86	16	1583.91	177	1582.46	1.5	1579.62
08/23/17 ²	315	32	1583.37	117	1582.34	15	1581.97	2.8	1579.13	40	1582.41	13	1583.98	136	1583.03	1.5	1576.62
08/24/17	410	42	1583.03	152	1582.00	20	1581.69	1.4	1579.13	52	1582.17	15	1583.92	176	1582.71	1.5	1576.63
08/25/17	408	42	1582.90	151	1581.88	19	1581.59	0.69	1579.13	52	1581.95	17	1583.91	176	1582.59	1.5	1576.63
08/26/17	400	42	1582.88	151	1581.85	11	1581.57	1.4	1579.13	52	1582.17	16	1583.88	161	1582.57	1.5	1576.64
08/27/17	405	42	1582.80	152	1581.78	18	1581.50	1.4	1579.13	52	1581.97	16	1583.93	189	1582.49	1.5	1576.65
08/28/17 ²	404	43	1582.76	154	1581.74	22	1581.48	1.0	1579.13	53	1582.08	12	1583.93	176	1582.45	1.5	1576.66
08/29/17	407	42	1582.74	152	1581.71	18	1581.46	2.8	1579.12	53	1582.11	15	1583.88	176	1582.43	1.5	1576.66
08/30/17	406	42	1582.71	152	1581.69	18	1581.44	2.7	1579.12	52	1582.41	16	1582.06	177	1583.88	1.5	1576.66
08/31/17	406	42	1582.70	151	1581.68	17	1581.44	1.4	1579.12	52	1582.40	16	1582.10	175	1583.88	1.5	1576.67
Monthly Average	408	42	1582.93	149	1581.91	19	1581.63	2.2	1579.13	52	1581.97	16	1583.78	175	1582.72	1.4	1579.97
Analytical ¹	Conc (mg/L)	Date	Conc (mg/L)	Date	Conc (mg/L)	Date	Conc (mg/L)	Date	Conc ⁸ (mg/L)	Date	Conc (mg/L)	Date	Conc (mg/L)	Date	Conc (mg/L)	Date	
Perchlorate	19	8/15/2017	18	8/15/2017	200	8/15/2017	150	8/15/2017	195	8/15/2017	110	8/15/2017	100	8/15/2017	110	8/16/2017	
Hexavalent Chromium	ND	8/15/2017	0.0094	8/15/2017	0.35	8/15/2017	0.19	8/15/2017	0.70	8/15/2017	0.61	8/15/2017	0.12	8/15/2017	0.090	8/16/2017	
Total Chromium	ND	8/15/2017	0.011	8/15/2017	0.36	8/15/2017	0.23	8/15/2017	0.76	8/15/2017	0.73	8/15/2017	0.12	8/15/2017	0.089	8/16/2017	

- Notes:
- Flow reported as gpm is a daily average calculated from the totalizer reading.
 - ND = Not detected above laboratory method detection limit (ClO₂ = 0.5 ug/L; ClO₃ = 10 ug/L; NO₃-N= 0.055 mg/L, Cr(VI) = 0.25 ug/L).
 - ART-1, 2, 3, 4, 7B, and 8 have adjacent recovery wells - "Buddy Wells" - designated by the letter "A". The wells with transducers are ART-1, -2, -3, -4, -7A, -8, -9, and PC-150.
 - 1: Analytical results are reported from TestAmerica.
 - 2: On 08/07, 08/14, 08/21, and 08/28, AWF and LS #3 totalizers were reset. Instantaneous flow rate at the time of the water level measurement was used for these dates.
 - 3: On 08/23, LS #3 and AWF were offline from 9:14 am to 2:49 pm for planned replacement of flow meter for LS #2.
 - 4: From 07/31-08/01, ART-2A offline for maintenance, back online at 10:30 am on 08/01. ART-2 continued to flow during this time.
 - 5: On 08/26, ART-3A offline intermittently due to electrical issues. ART-3 continued to pump.
 - 6: Duplicates taken on 08/15 for well ART-9; average of both values is presented and used for calculation.
 - 7: On 08/28, ART-7 offline briefly for maintenance.
 - 8: Conducted periodic bucket tests to confirm flow rates for PC-150. Average flow of 1.5 gpm determined from flow tests is presented for 08/01-08/31 flows and used for calculation purposes. Flow was steady throughout August, except for 08/13 and 08/15, but the totalizer showed zero flow because totalizer units are 1,000 gallons.
 - 9: From 08/13-08/15, the pump for PC-150 was above water. The pump was lowered on 08/15 and pumping resumed at 1 pm.

Table 3 - Interceptor Well Field (IWF) Operational Metrics

Nevada Environmental Response Trust Groundwater Extraction and Treatment System Enhanced Operational Metrics																				
Date	I-AR		I-AA		I-AB		I-AC		I-AD		I-B		I-C		I-D		I-E		I-F	
	Flow ⁶ (gpm)	Water Elevation (ft amsl)	Flow ⁷ (gpm)	Water Elevation (ft amsl)	Flow (gpm)	Water Elevation (ft amsl)	Flow (gpm)	Water Elevation (ft amsl)	Flow (gpm)	Water Elevation (ft amsl)	Flow ⁷ (gpm)	Water Elevation (ft amsl)	Flow ^{2,7,8,9} (gpm)	Water Elevation ² (ft amsl)	Flow (gpm)	Water Elevation (ft amsl)	Flow (gpm)	Water Elevation (ft amsl)	Flow ⁷ (gpm)	Water Elevation ² (ft amsl)
08/01/17	0.05	1729.36	0.37	1719.15	0.00	1720.86	0.00	1723.52	0.00	1725.13	0.58	1709.68	3.4	1715.34	2.7	1721.29	1.5	1708.29	4.4	1714.71
08/02/17	0.22	1726.76	0.37	1719.18	0.00	1720.85	0.00	1723.50	0.00	1725.12	0.60	1709.67	3.8	1710.38	2.6	1721.26	1.5	1708.29	4.4	1714.73
08/03/17	0.26	1726.76	0.37	1719.19	0.00	1720.83	0.00	1723.49	0.00	1725.12	0.56	1709.68	3.9	< 1710.00	2.6	1721.23	1.6	1708.30	4.4	1714.74
08/04/17	0.25	1726.92	0.80	1712.33	0.00	1720.74	0.00	1723.51	0.00	1725.12	0.64	1709.68	3.9	< 1710.00	2.6	1721.16	1.6	1708.30	4.5	1714.62
08/05/17	0.23	1727.08	1.0	1712.28	0.00	1720.69	0.00	1723.52	0.00	1725.12	0.59	1709.66	4.2	< 1710.00	2.6	1721.09	1.6	1708.32	4.5	1714.58
08/06/17	0.23	1727.09	1.0	1712.22	0.00	1720.65	0.00	1723.52	0.00	1725.12	0.52	1709.71	4.0	< 1710.00	2.6	1720.99	1.5	1708.31	4.5	1714.54
08/07/17 ³	0.22	1727.24	1.0	1712.23	0.00	1720.63	0.00	1723.51	0.00	1725.12	0.89	1709.68	4.1	< 1710.00	2.6	1720.79	1.4	1708.31	4.4	1714.50
08/08/17	0.21	1727.57	1.0	1712.22	0.00	1720.66	0.02	1724.37	0.00	1725.11	0.62	1709.72	3.9	< 1710.00	2.6	1720.60	1.5	1708.31	4.4	1714.46
08/09/17	0.20	1727.89	1.0	1712.36	0.00	1720.71	0.00	1724.38	0.00	1725.12	0.61	1709.76	3.6	1712.18	2.6	1720.51	1.5	1708.32	4.4	1715.02
08/10/17	0.20	1727.84	1.0	1712.44	0.00	1720.76	0.00	1724.37	0.00	1725.12	0.57	1709.77	3.7	< 1710.00	2.5	1720.36	1.5	1708.32	4.4	1715.02
08/11/17	0.19	1727.30	1.0	1712.54	0.00	1720.79	0.00	1724.36	0.00	1725.12	0.63	1709.62	3.9	< 1710.00	2.5	1720.12	1.5	1708.33	4.5	1715.01
08/12/17	0.19	1727.25	1.0	1712.67	0.00	1720.79	0.00	1724.33	0.00	1725.11	0.57	1709.08	3.9	< 1710.00	2.5	1719.52	1.5	1708.34	4.5	1715.01
08/13/17	0.18	1727.24	1.0	1712.68	0.00	1720.80	0.00	1724.34	0.00	1725.12	0.57	1709.78	3.9	< 1710.00	2.5	1718.64	1.5	1708.34	4.5	1715.01
08/14/17 ³	0.18	1727.16	0.97	1712.81	0.00	1720.82	0.00	1724.34	0.00	1725.13	0.45	1709.81	3.8	< 1710.00	2.5	1717.82	1.5	1708.34	4.4	1715.01
08/15/17	0.17	1727.08	0.98	1712.82	0.00	1720.83	0.00	1724.30	0.00	1725.12	0.62	1709.73	3.9	< 1710.00	2.4	1716.85	1.4	1708.34	4.4	1715.01
08/16/17	0.16	1726.96	0.98	1712.80	0.00	1720.84	0.00	1724.28	0.00	1725.11	0.58	1709.79	3.0	1713.96	2.4	1717.26	1.5	1708.35	4.4	1715.01
08/17/17	0.16	1726.80	0.99	1712.82	0.00	1720.86	0.00	1724.25	0.00	1725.11	0.58	1709.84	3.6	1714.83	2.4	1717.15	1.4	1708.35	4.5	1715.01
08/18/17	0.16	1726.73	0.98	1712.90	0.00	1720.87	0.00	1724.25	0.00	1725.11	0.59	1709.89	3.0	1713.89	2.3	1717.85	1.4	1708.34	4.5	1715.01
08/19/17	0.15	1726.83	0.97	1712.94	0.00	1720.86	0.00	1724.25	0.00	1725.12	0.66	1709.89	3.6	1712.39	2.3	1717.62	1.4	1708.34	4.5	1715.01
08/20/17	0.15	1726.88	0.99	1712.92	0.00	1720.83	0.00	1724.23	0.00	1725.12	0.62	1709.90	3.8	1711.79	2.3	1717.43	1.4	1708.34	4.5	1715.01
08/21/17 ³	0.37	1723.58	0.91	1713.41	0.00	1720.82	0.00	1724.19	0.00	1725.11	0.57	1709.91	4.1	1711.08	2.2	1717.33	1.5	1708.35	4.4	< 1715.00
08/22/17	0.36	1724.05	0.93	1713.43	0.00	1720.83	0.00	1724.24	0.00	1725.12	0.59	1709.93	3.9	1710.98	2.2	1717.26	1.4	1708.35	4.4	1715.01
08/23/17 ⁴	0.23	1726.66	0.76	1715.15	0.00	1720.93	0.00	1724.23	0.00	1725.14	0.38	1717.78	3.3	1715.95	1.9	1720.16	1.4	1708.33	4.0	1715.01
08/24/17	0.18	1726.43	0.76	1715.23	0.00	1720.94	0.00	1724.33	0.00	1725.14	0.32	1717.52	3.9	1711.74	2.0	1720.28	1.5	1708.33	4.4	1715.01
08/25/17	0.17	1726.29	0.76	1715.26	0.00	1720.93	0.00	1724.22	0.00	1725.15	0.34	1717.25	3.8	1714.34	2.0	1720.38	1.5	1708.34	4.5	1715.01
08/26/17	0.16	1726.33	0.76	1715.30	0.00	1720.94	0.00	1724.23	0.00	1725.15	0.37	1717.18	3.9	< 1710.00	1.9	1720.41	1.5	1708.34	4.5	1715.01
08/27/17	0.16	1726.28	0.76	1715.27	0.00	1720.94	0.00	1724.24	0.00	1725.16	0.37	1717.14	3.8	1710.29	1.9	1720.43	1.4	1708.34	4.5	1715.02
08/28/17 ³	0.16	1726.43	0.76	1715.31	0.00	1720.95	0.00	1724.24	0.00	1725.16	0.41	1716.96	3.7	1710.58	1.8	1720.51	1.5	1708.34	4.4	1715.02
08/29/17	0.15	1726.45	0.75	1715.43	0.00	1720.92	0.00	1724.23	0.00	1725.17	0.39	1716.81	3.8	< 1710.00	1.8	1720.51	1.4	1708.34	4.4	1715.02
08/30/17	0.15	1726.79	0.74	1715.47	0.00	1720.91	0.00	1724.21	0.00	1725.16	0.39	1716.81	3.8	< 1710.00	1.8	1720.55	1.4	1708.34	4.4	1715.01
08/31/17	0.13	1727.10	1.1	1710.77	0.00	1720.84	0.00	1724.22	0.00	1725.17	0.40	1716.48	3.3	1716.09	1.8	1720.75	1.4	1708.35	4.4	1715.01
Monthly Average	0.19	1726.81	0.86	1713.92	0.00	1720.83	0.00	1724.10	0.00	1725.13	0.53	1711.87	3.7	1711.48	2.3	1719.62	1.5	1708.33	4.4	1715.01
Analytical ¹	Conc (mg/L)	Date	Conc (mg/L)	Date	Conc (mg/L)	Date	Conc (mg/L)	Date	Conc (mg/L)	Date	Conc (mg/L)	Date	Conc (mg/L)	Date	Conc ⁶ (mg/L)	Date	Conc (mg/L)	Date	Conc (mg/L)	Date
Perchlorate	1.900	8/8/2017	82	8/9/2017	240	8/10/2017	240	8/8/2017	290	8/9/2017	690	8/9/2017	670	8/9/2017	560	8/9/2017	760	8/9/2017	760	8/9/2017
Hexavalent Chromium	0.00085	8/8/2017	0.053	8/9/2017	ND	8/10/2017	2.1	8/8/2017	1.2	8/8/2017	0.038	8/9/2017	1.9	8/9/2017	4.9	8/9/2017	6.0	8/9/2017	11	8/9/2017
Total Chromium	0.10	8/8/2017	0.054	8/9/2017	0.012	8/10/2017	2.1	8/8/2017	1.2	8/8/2017	0.047	8/9/2017	2.0	8/9/2017	5.2	8/9/2017	6.6	8/9/2017	12	8/9/2017

Notes:
 Flow reported as gpm is a daily average calculated from the totalizer reading.
 ND = Not detected above laboratory method detection limit (Cr(VI) = 1.0 ug/L).
 1: Analytical results are reported from TestAmerica.
 2: A "<" preceding the water elevation indicates the reported water level is below the transducer. A ">" preceding the water elevation indicates the reported water level is above the upper range of the transducer. Average monthly water elevation calculations include the transducer elevation in instances where the water level is below or above the transducer.
 3: On 08/07, 08/14, 08/21, and 08/28, IWF totalizers were reset. Instantaneous flow rate at the time of the water level measurement was used for these dates.
 4: On 08/23, IWF was offline intermittently from 8:00 am to 10:58 am for planned Tronox power outage.
 5: On 08/02, I-AR, I-C, I-G, I-L, I-Q, I-S, and I-Y adjusted to meet flow target as directed by the Trust.
 6: On 08/21, I-AR adjusted for testing and I-L adjusted to meet flow target as directed by the Trust.
 7: On 08/04, I-AA, I-B, I-C, I-F, I-L, I-M, I-N, I-P, I-Q, I-S, I-U, I-X, and I-Y adjusted to meet flow target as directed by the Trust.
 8: On 08/21, I-C offline from 11:42 am to 1:34 pm for motor maintenance.
 9: On 08/28, I-C, I-G, I-H, I-L, I-O, I-P, I-S, I-U, I-W, and I-X adjusted to meet flow target as directed by the Trust.
 10: Duplicates taken on 08/09 for well I-D; average of both values is presented and used for calculation purposes.

Nevada Environmental Response Trust Groundwater Extraction and Treatment System Enhanced Operational Metrics																				
Date	I-G		I-H		I-I		I-J		I-K		I-L		I-M		I-N		I-O		I-P	
	Flow ^{5,9,11} (gpm)	Water Elevation (ft amsl)	Flow ⁹ (gpm)	Water Elevation ^{2,12} (ft amsl)	Flow (gpm)	Water Elevation (ft amsl)	Flow (gpm)	Water Elevation (ft amsl)	Flow (gpm)	Water Elevation (ft amsl)	Flow ^{5,9,11} (gpm)	Water Elevation (ft amsl)	Flow ^{7,13} (gpm)	Water Elevation ² (ft amsl)	Flow ⁷ (gpm)	Water Elevation (ft amsl)	Flow ⁹ (gpm)	Water Elevation (ft amsl)	Flow ⁹ (gpm)	Water Elevation (ft amsl)
08/01/17	0.14	1720.21	1.0	> 1737.00	4.9	1721.88	6.6	1707.07	3.3	1714.11	1.6	1711.64	1.4	< 1710.00	4.1	1719.15	1.0	1721.06	1.3	1721.07
08/02/17	0.19	1717.12	1.0	> 1737.00	4.9	1721.85	6.5	1707.07	3.3	1714.06	1.6	1711.55	1.4	< 1710.00	4.1	1719.17	0.96	1721.04	1.3	1721.03
08/03/17	0.20	1717.54	1.0	> 1737.00	4.9	1721.82	6.5	1707.07	3.3	1714.02	1.6	1711.57	1.4	< 1710.00	4.1	1719.16	1.1	1721.02	1.4	1720.99
08/04/17	0.19	1718.14	1.0	> 1737.00	4.9	1721.81	6.5	1707.07	3.3	1714.04	1.5	1711.55	1.8	< 1710.00	4.2	1719.00	1.0	1720.94	1.8	1720.50
08/05/17	0.18	1717.94	1.1	> 1737.00	4.9	1721.79	6.5	1707.07	3.3	1714.06	1.6	1711.55	1.9	< 1710.00	4.2	1719.94	1.2	1720.90	1.9	1720.42
08/06/17	0.18	1717.79	1.1	> 1737.00	4.9	1721.76	6.5	1707.07	3.3	1714.07	1.6	1712.51	1.9	< 1710.00	4.2	1718.89	1.3	1720.87	1.8	1720.34
08/07/17 ³	0.18	1717.66	1.1	> 1737.00	4.9	1721.74	6.6	1707.08	3.2	1714.07	1.5	1713.01	1.8	< 1710.00	4.2	1718.85	1.3	1720.80	1.7	1720.26
08/08/17	0.18	1717.53	1.0	> 1737.00	4.9	1721.72	6.5	1707.02	3.3	1714.08	1.5	1713.69	1.8	< 1710.00	4.3	1718.81	1.3	1720.75	1.7	1720.18
08/09/17	0.18	1717.27	0.99	> 1737.00	4.9	1721.70	6.5	1707.02	3.2	1714.05	1.4	1715.06	1.8	< 1710.00	4.3	1718.77	1.1	1720.73	1.7	1720.14
08/10/17	0.18	1717.05	0.99	> 1737.00	4.9	1721.69	6.5	1707.02	3.3	1714.06	1.3	1716.06	1.7	< 1710.00	4.2	1718.71	1.0	1720.73	1.7	1720.12
08/11/17	0.18	1716.84	1.0	> 1737.00	4.9	1721.68	6.5	1707.02	3.3	1714.08	1.3	1716.56	1.8	< 1710.00	4.2	1718.63	0.99	1720.71	1.7	1720.11
08/12/17	0.18	1716.47	1.1	> 1737.00	4.9	1721.67	6.4	1707.02	3.3	1714.05	1.3	1713.74	1.9	< 1710.00	4.2	1718.55	1.1	1720.71	1.6	1720.11
08/13/17	0.18	1716.46	1.1	> 1737.00	4.9	1721.67	6.4	1707.03	3.3	1714.03	1.4	1715.76	2.2	< 1710.00	4.2	1718.50	1.2	1720.69	1.6	1720.09
08/14/17 ³	0.17	1716.41	1.0	> 1737.00	4.9	1721.67	6.6	1707.02	3.2	1714.05	1.2	1716.62	2.1	< 1710.00	4.3	1718.44	1.2	1720.70	1.6	1720.10
08/15/17	0.17	1716.32	1.0	> 1737.00	4.9	1721.66	6.4	1707.02	3.3	1714.00	1.2	1717.66	2.1	< 1710.00	4.3	1718.39	1.2	1720.70	1.6	1720.06
08/16/17	0.17	1716.21	1.1	> 1737.00	4.9	1721.64	6.4	1707.02	3.2	1714.07	1.1	1718.47	2.2	< 1710.00	4.3	1718.34	1.2	1720.66	1.6	1720.03
08/17/17	0.17	1716.12	1.1	> 1737.00	4.9	1721.63	6.4	1707.02	3.2	1714.05	1.0	1718.78	2.1	< 1710.00	4.2	1718.30	1.4	1720.62	1.6	1719.98
08/18/17	0.16	1716.27	1.0	> 1737.00	4.9	1721.63	6.4	1707.02	3.3	1714.08	0.98	1719.33	2.1	< 1710.00	4.2	1718.25	1.3	1720.59	1.6	1719.94
08/19/17	0.16	1716.13	0.99	> 1737.00	4.9	1721.63	6.4	1707.03	3.3	1714.10	0.96	1718.72	2.1	< 1710.00	4.2	1718.21	1.2	1720.61	1.6	1719.96
08/20/17	0.16	1716.06	0.98	> 1737.00	4.9	1721.62	6.4	1707.03	3.3	1714.08	0.94	1718.76	2.1	< 1710.00	4.2	1718.13	1.4	1720.62	1.5	1719.95
08/21/17 ³	0.16	1715.88	1.1	> 1737.00	5.0	1721.60	6.3	1707.02	3.2	1714.07	1.2	1716.99	2.1	< 1710.00	4.2	1718.00	1.6	1720.58	1.8	1719.92
08/22/17	0.16	1715.87	1.0	> 1737.00	4.9	1721.61	6.4	1707.02	3.2	1714.10	1.2	1716.95	2.1	< 1710.00	4.2	1717.93	1.4	1720.55	1.6	1719.96
08/23/17 ⁴	0.10	1720.33	0.92	> 1737.00	4.5	1721.80	6.0	1707.04	3.0	1714.39	1.2	1714.53	1.7	< 1710.00	3.9	1718.22	0.91	1721.27	1.3	1720.76
08/24/17	0.10	1719.65	1.1	> 1737.00	4.9	1721.81	6.5	1707.03	3.3	1714.29	1.4	1715.29	1.7	< 1710.00	4.2	1718.11	0.87	1721.34	1.4	1720.92
08/25/17	0.10	1720.01	0.99	> 1737.00	4.9	1721.83	6.5	1707.04	3.3	1714.17	1.3	1716.04	1.6	< 1710.00	4.2	1717.97	0.78	1721.41	1.4	1721.00
08/26/17	0.09	1720.31	0.92	> 1737.00	4.9	1721.85	6.5	1707.04	3.3	1714.16	1.3	1715.66	1.6	< 1710.00	4.2	1717.91	0.76	1721.43	1.4	1721.05
08/27/17	0.09	1720.27	0.89	> 1737.00	4.9	1721.88	6.5	1707.04	3.3	1714.39	1.3	1715.94	1.6	< 1710.00	4.2	1717.88	0.69	1721.45	1.3	1721.10
08/28/17 ³	0.09	1720.32	0.87	> 1737.00	5.0	1721.90	6.6	1707.03	3.3	1714.42	1.3	1716.29	1.6	< 1710.00	4.2	1717.87	0.58	1721.49	1.3	1721.13
08/29/17	0.08	1720.65	1.2	> 1737.00	4.9	1721.85	6.5	1707.04	3.2	1714.44	1.6	1712.03	1.6	< 1710.00	4.2	1717.77	0.63	1721.34	1.7	1720.65
08/30/17	0.06	1720.75	1.2	> 1737.00	4.9	1721.82	6.5	1707.04	3.2	1714.38	1.5	1713.73	1.6	< 1710.00	4.2	1717.74	0.63	1721.32	1.6	1720.57
08/31/17	0.06	1720.80	1.2	> 1737.00	4.9	1721.81	6.5	1707.03	3.2	1714.38	1.4	1714.52	1.6	< 1710.00	4.2	1717.68	0.73	1721.29	1.6	1720.57
Monthly Average	0.15	1717.95	1.0	1737.00	4.9	1721.74	6.5	1707.04	3.3	1714.14	1.3	1715.18	1.8	1710.00	4.2	1718.40	1.1	1720.93	1.6	1720.42
Analytical ¹	Conc (mg/L)	Date	Conc (mg/L)	Date	Conc (mg/L)	Date	Conc (mg/L)	Date	Conc (mg/L)	Date	Conc (mg/L)	Date	Conc (mg/L)	Date	Conc (mg/L)	Date	Conc (mg/L)	Date	Conc (mg/L)	Date
Perchlorate	1,200	8/10/2017	1,100	8/10/2017	820	8/8/2017	310	8/8/2017	250	8/8/2017	700	8/9/2017	570	8/9/2017	820	8/10/2017	800	8/10/2017	800	8/10/2017
Hexavalent Chromium	20	8/10/2017	16	8/10/2017	11	8/8/2017	4.0	8/8/2017	2.1	8/8/2017	0.41	8/9/2017	6.1	8/9/2017	5.5	8/9/2017	17	8/10/2017	17	8/10/2017
Total Chromium	25	8/10/2017	19	8/10/2017	11	8/8/2017	3.8	8/8/2017	2.2	8/8/2017	0.46	8/9/2017	6.5	8/9/2017	6.0	8/9/2017	20	8/10/2017	20	8/10/2017

Notes:
 Flow reported as gpm is a daily average calculated from the totalizer reading.
 1: Analytical results are reported from TestAmerica.
 2: A "<" preceding the water elevation indicates the reported water level is below the transducer. A ">" preceding the water elevation indicates the reported water level is above the upper range of the transducer. Average monthly water elevation calculations include the transducer elevation in instances where the water level is below or above the transducer.
 3: On 08/07, 08/14, 08/21, and 08/28, IWF totalizers were reset. Instantaneous flow rate at the time of the water level measurement was used for these dates.
 4: On 08/23, IWF was offline intermittently from 8:00 am to 10:58 am for planned Tronox power outage.
 5: On 08/02, I-AR, I-C, I-G, I-L, I-Q, I-S, and I-Y adjusted to meet flow target as directed by the Trust.
 6: On 08/21, I-AR adjusted for testing and I-L adjusted to meet flow target as directed by the Trust.
 7: On 08/04, I-AA, I-B, I-C, I-F, I-L, I-M, I-N, I-P, I-Q, I-S, I-U, I-X, and I-Y adjusted to meet flow target as directed by the Trust.
 9: On 08/28, I-C, I-G, I-H, I-L, I-O, I-P, I-S, I-U, I-W, and I-X adjusted to meet flow target as directed by the Trust.
 11: On 08/24, I-G and I-Q adjusted to meet flow target as directed by the Trust.
 12: From 08/01-08/31, I-H transducer was not functioning. A replacement transducer has been requested from the manufacturer.
 13: On 08/12, I-L, I-M, I-S, I-X, and I-Y adjusted to meet flow target as directed by the Trust.

Table 3 - Interceptor Well Field (IWF) Operational Metrics

Nevada Environmental Response Trust Groundwater Extraction and Treatment System Enhanced Operational Metrics																				
Date	I-Q		I-R		I-S		I-T		I-U		I-V		I-W		I-X		I-Y		I-Z	
	Flow ^{2,7,11} (gpm)	Water Elevation ² (ft amsl)	Flow (gpm)	Water Elevation (ft amsl)	Flow ^{2,7,9,13} (gpm)	Water Elevation ² (ft amsl)	Flow (gpm)	Water Elevation (ft amsl)	Flow ^{7,9} (gpm)	Water Elevation (ft amsl)	Flow (gpm)	Water Elevation (ft amsl)	Flow ² (gpm)	Water Elevation (ft amsl)	Flow ^{2,7,13} (gpm)	Water Elevation (ft amsl)	Flow ^{2,7,13} (gpm)	Water Elevation ² (ft amsl)	Flow ¹⁴ (gpm)	Water Elevation ² (ft amsl)
08/01/17	0.15	1719.97	1.3	1709.15	3.7	< 1710.00	0.50	1708.79	0.73	1711.97	4.3	1719.35	0.79	1719.07	3.1	1717.19	1.4	1714.39	7.4	< 1710.00
08/02/17	0.09	1720.28	1.3	1709.19	3.7	< 1710.00	0.49	1709.24	0.73	1711.89	4.3	1719.31	0.80	1719.07	3.0	1717.21	1.5	1705.33	7.5	< 1710.00
08/03/17	0.01	< 1710.00	1.4	1709.17	3.6	< 1710.00	0.48	1709.48	0.73	1711.69	4.3	1719.26	0.79	1719.10	3.0	1717.22	1.6	1705.01	7.6	< 1710.00
08/04/17	0.09	< 1710.00	1.3	1709.98	3.6	< 1710.00	0.48	1709.27	0.84	1708.32	4.3	1719.22	0.77	1719.00	3.5	1715.96	1.6	< 1705.00	7.7	< 1710.00
08/05/17	0.13	< 1710.00	1.6	1709.22	3.6	< 1710.00	0.48	1709.16	0.88	1708.55	4.3	1719.17	0.78	1719.84	3.7	1716.09	1.6	< 1705.00	7.7	< 1710.00
08/06/17	0.12	< 1710.00	1.5	1709.95	3.5	< 1710.00	0.49	1708.60	0.86	1708.89	4.3	1719.11	0.79	1718.79	3.6	1716.09	1.6	< 1705.00	7.7	< 1710.00
08/07/17 ³	0.14	< 1710.00	1.3	1709.45	3.6	< 1710.00	0.49	1708.50	0.84	1709.02	4.3	1719.07	0.78	1718.70	3.6	1716.06	1.6	1705.01	7.8	< 1710.00
08/08/17	0.13	< 1710.00	1.4	1710.28	3.6	< 1710.00	0.49	1708.30	0.83	1709.62	4.3	1719.01	0.77	1718.62	3.6	1716.02	1.5	1713.30	7.6	< 1710.00
08/09/17	0.14	< 1710.00	1.4	1709.61	3.7	< 1710.00	0.49	1708.24	0.81	1709.75	4.3	1718.98	0.77	1718.55	3.6	1715.97	1.2	1716.21	7.4	< 1710.00
08/10/17	0.13	< 1710.00	1.4	1709.30	3.8	< 1710.00	0.48	1708.16	0.79	1710.00	4.3	1718.95	0.78	1718.49	3.8	1714.81	1.0	1716.85	7.2	< 1710.00
08/11/17	0.16	1719.64	1.5	1709.43	3.9	< 1710.00	0.48	1708.27	0.79	1709.95	4.3	1718.93	0.78	1718.48	4.1	1714.93	1.1	1716.85	7.3	< 1710.00
08/12/17	0.16	1719.67	1.5	1709.73	3.8	< 1710.00	0.48	1708.30	0.79	1710.27	4.3	1718.91	0.61	1718.50	4.1	1714.59	1.3	1705.01	7.7	< 1710.00
08/13/17	0.15	1719.60	1.4	1709.29	3.7	< 1710.00	0.47	1708.26	0.76	1710.53	4.3	1718.90	0.98	1718.49	4.1	1714.74	1.4	1715.75	7.5	< 1710.00
08/14/17 ³	0.16	1719.52	1.8	1709.20	3.7	< 1710.00	0.47	1708.28	0.75	1710.77	4.3	1718.91	0.79	1718.49	4.0	1714.78	1.2	1715.90	7.7	< 1710.00
08/15/17	0.17	1719.48	1.5	1710.24	3.8	< 1710.00	0.48	1708.33	0.74	1711.04	4.3	1718.88	0.73	1718.49	3.9	1714.85	1.2	1716.30	7.6	< 1710.00
08/16/17	0.16	1719.43	1.5	1709.36	3.9	< 1710.00	0.48	1708.05	0.74	1710.88	4.3	1718.86	0.74	1718.47	3.9	1714.87	1.1	1717.06	7.6	< 1710.00
08/17/17	0.17	1719.41	1.5	1710.01	4.0	< 1710.00	0.48	1707.92	0.75	1710.85	4.3	1718.83	0.75	1718.45	3.9	1714.87	1.0	1717.17	7.6	< 1710.00
08/18/17	0.17	1719.45	1.5	1709.42	4.1	< 1710.00	0.48	1707.93	0.74	1710.80	4.3	1718.83	0.76	1718.23	3.9	1714.89	1.0	1717.37	7.5	< 1710.00
08/19/17	0.15	1719.39	1.5	1709.22	4.0	< 1710.00	0.48	1707.84	0.75	1710.73	4.3	1718.81	0.75	1718.22	3.8	1714.88	1.2	< 1705.00	7.5	< 1710.00
08/20/17	0.16	1719.42	1.5	1709.30	3.9	< 1710.00	0.49	1707.73	0.73	1711.42	4.2	1718.79	0.75	1718.22	3.9	1713.81	1.6	1710.43	7.5	< 1710.00
08/21/17 ³	0.16	1719.29	2.0	1709.20	3.9	< 1710.00	0.49	1707.70	0.71	1711.51	4.3	1718.77	0.77	1718.44	4.2	1713.82	1.5	1711.20	7.7	< 1710.00
08/22/17	0.16	1719.43	1.5	1709.38	3.8	< 1710.00	0.48	1707.71	0.69	1712.06	4.3	1718.77	0.72	1718.50	4.1	1713.90	1.4	1714.25	7.6	< 1710.00
08/23/17 ⁴	0.11	1719.72	1.4	1709.39	3.7	< 1710.00	0.44	1708.35	0.56	1714.10	4.0	1719.21	0.41	1720.44	3.5	1715.58	1.3	1713.69	7.2	< 1710.00
08/24/17	0.08	1719.67	1.7	1709.26	3.8	< 1710.00	0.47	1708.87	0.58	1714.05	4.3	1719.26	0.31	1720.53	3.7	1715.10	1.4	1715.30	7.8	< 1710.00
08/25/17	0.10	1719.63	1.6	1709.22	3.8	< 1710.00	0.47	1708.86	0.58	1714.13	4.3	1719.30	0.32	1720.52	3.9	1714.58	1.3	1715.63	7.7	< 1710.00
08/26/17	0.12	1719.60	1.6	1709.31	3.8	< 1710.00	0.48	1708.43	0.59	1714.12	4.3	1719.35	0.32	1720.55	4.0	1714.49	1.2	1716.01	7.7	< 1710.00
08/27/17	0.12	1719.62	1.5	1709.23	3.8	< 1710.00	0.49	1708.38	0.62	1713.47	4.4	1719.39	0.33	1720.58	3.8	1714.66	1.2	1716.02	7.7	< 1710.00
08/28/17 ³	0.11	1719.59	1.5	1709.19	3.8	< 1710.00	0.49	1708.36	0.63	1713.63	4.4	1719.43	0.35	1720.63	3.7	1714.71	1.2	1716.09	7.4	< 1710.00
08/29/17	0.21	1719.09	1.4	1709.47	3.6	< 1710.00	0.49	1708.64	0.76	1711.61	4.3	1719.31	0.87	1718.65	4.1	1714.06	1.5	1714.03	7.5	< 1710.00
08/30/17	0.17	1719.33	1.4	1709.46	3.6	< 1710.00	0.49	1708.35	0.72	1711.91	4.3	1719.24	0.86	1718.64	3.9	1714.22	1.4	1714.82	7.7	< 1710.00
08/31/17	0.15	1719.36	1.4	1709.19	3.6	< 1710.00	0.49	1708.31	0.69	1712.59	4.3	1719.22	0.82	1718.73	4.0	1713.89	1.3	1715.56	7.7	< 1710.00
Monthly Average	0.14	1717.08	1.5	1709.45	3.8	< 1710.00	0.48	1708.41	0.73	1711.29	4.3	1719.08	0.69	1718.98	3.8	1715.12	1.3	1712.60	7.6	< 1710.00
Analytical ¹	Conc (mg/L)	Date	Conc (mg/L)	Date	Conc (mg/L)	Date	Conc (mg/L)	Date	Conc (mg/L)	Date	Conc (mg/L)	Date	Conc (mg/L)	Date	Conc (mg/L)	Date	Conc (mg/L)	Date	Conc (mg/L)	Date
Perchlorate	1,000	8/10/2017	890	8/9/2017	610	8/9/2017	1,400	8/10/2017	1,600	8/10/2017	860	8/8/2017	870	8/10/2017	1,100	8/9/2017	1,200	8/9/2017	460	8/8/2017
Hexavalent Chromium	18	8/10/2017	0.17	8/9/2017	0.71	8/9/2017	21	8/10/2017	20	8/10/2017	16	8/8/2017	17	8/10/2017	7.6	8/9/2017	0.28	8/9/2017	9.3	8/8/2017
Total Chromium	18	8/10/2017	0.23	8/9/2017	0.76	8/9/2017	28	8/10/2017	27	8/10/2017	16	8/8/2017	21	8/10/2017	7.5	8/9/2017	0.32	8/9/2017	9.0	8/8/2017

Notes:
 Flow reported as gpm is a daily average calculated from the totalizer reading.
 1: Analytical results are reported from TestAmerica.
 2: A "<" preceding the water elevation indicates the reported water level is below the transducer. A ">" preceding the water elevation indicates the reported water level is above the upper range of the transducer. Average monthly water elevation calculations include the transducer elevation in instances where the water level is below or above the transducer.
 3: On 08/07, 08/14, 08/21, and 08/28, IWF totalizers were reset. Instantaneous flow rate at the time of the water level measurement was used for these dates.
 4: On 08/23, IWF was offline intermittently from 8:00 am to 10:58 am for planned Tronox power outage.
 5: On 08/02, I-A, I-C, I-G, I-L, I-Q, I-S, and I-Y adjusted to meet flow target as directed by the Trust.
 7: On 08/04, I-AA, I-B, I-C, I-F, I-L, I-M, I-N, I-P, I-Q, I-S, I-U, I-X, and I-Y adjusted to meet flow target as directed by the Trust.
 9: On 08/28, I-C, I-G, I-H, I-L, I-O, I-P, I-S, I-U, I-W, and I-X adjusted to meet flow target as directed by the Trust.
 11: On 08/24, I-G and I-Q adjusted to meet flow target as directed by the Trust.
 13: On 08/12, I-L, I-M, I-S, I-X, and I-Y adjusted to meet flow target as directed by the Trust.
 14: On 08/21, I-Z offline from 3:08 pm to 3:32 pm for motor maintenance.

Table 4 - Treatment Plant Operational Metrics

Nevada Environmental Response Trust Groundwater Extraction and Treatment System Enhanced Operational Metrics																
Date	LS #2	GWTP Effluent ¹				GW-11 Influent ¹				FBR Plant Influent ¹						
	Flow ⁵ (gpm)	Flow (gpm)	TA - Cr (TR) (mg/L)	TA - Cr (VI) (mg/L)	TA - ClO ₄ (mg/L)	Flow ⁷ (gpm)	TA - Cr (TR) (mg/L)	TA - Cr (VI) (mg/L)	TA - ClO ₄ (mg/L)	Flow ⁵ (gpm)	TA - ClO ₄ (mg/L)	ETI - ClO ₄ (mg/L)	TA - ClO ₃ (mg/L)	TA - NO ₃ - N (mg/L)	TA - Cr (TR) (mg/L)	TA - Cr (VI) (mg/L)
08/01/17	388	75				0.00				1,360		331	170			
08/02/17	306	78				0.00				1,072		293				
08/03/17	18	78	0.53	ND	760	0.00				1,075		319				
08/04/17	0.00	81				0.00				1,075		59				
08/05/17	288	82				0.00				1,075	250	58				
08/06/17	0.00	79				0.00				1,073		66				
08/07/17 ³	0.00	78				0.00				1,043		62		9.2	0.034	0.025
08/08/17	116	70				6.0	0.13	0.024	92	1,088		73				
08/09/17	132	60				0.00				1,084		86				
08/10/17	174	63	0.42	ND	680	0.00				1,107		86				
08/11/17	422	65				0.00				1,136		74				
08/12/17	266	60				0.00				1,122	75	78				
08/13/17	208	60				0.00				1,110		84				
08/14/17 ³	0.00	68				0.00				1,126		86		7.6	0.091	0.022
08/15/17	0.00	82				0.00				1,080		85				
08/16/17	86	80				0.00				1,079		85				
08/17/17	212	81	0.25	ND	720	0.00				1,077		86				
08/18/17	439	82				0.00				1,077		85				
08/19/17	434	83				0.00				1,075	80	85				
08/20/17	466	84				0.00				1,077		86				
08/21/17 ³	1,005	84				0.00				1,088		87		12	0.048	0.043
08/22/17	314	80				0.00				1,073		86				
08/23/17 ⁴	273	75				0.00				818		NM				
08/24/17	511	83	0.31	ND	700	0.00				594		82				
08/25/17	953	83				0.00				1,036		85				
08/26/17	1,002	82				0.00				1,084	79	78				
08/27/17	1,008	83				0.00				1,091		75				
08/28/17 ³	1,038	82				0.00				1,127		74		11	0.048 B	0.035
08/29/17	1,009	82				0.00				1,097		77				
08/30/17	1,009	82				0.00				1,113		81				
08/31/17	1,007	63	0.18	ND	570	0.00				1,094		81				
Monthly Average ²	422	77	0.34	ND	696	0.19	0.13	0.024	92	1,072	124	102	170	9.81	0.053	0.030

Notes:

Flow reported as gpm is a daily average calculated from the totalizer reading.

ND = Not detected above laboratory method detection limit (ClO₄ = 0.5 ug/L; ClO₃ = 10 ug/L; NO₃-N = 0.055 mg/L, Cr(VI) = 0.25 ug/L).

NM = No measurement.

B = Compound was found in the blank and sample.

1: ETI = Envirogen internal process control data, TA = TestAmerica data.

2: All average concentrations reported are monthly flow weighted averages.

3: On 08/07, 08/14, 08/21, and 08/28, LS #2 totalizer was reset. Instantaneous flow rate at the time of the water level measurement was used for these dates.

4: On 08/23, two planned shutdowns occurred: 1) the plant due to an electrical outage by Tronox and 2) some offsite wells due to the installation of a new flow meter at LS #2.

5: From 08/01-08/22, LS #2 flow meter intermittently lost communication with PLC. Flow was not interrupted. The FBR Plant Influent Flow was estimated by summing flows for LS #1, LS #3, GWTP Effluent, and GW-11 Effluent.

6: From 08/23 to 08/31, the FBR Plant Influent Flow was estimated by summing flows for LS #2, GWTP Effluent, and GW-11 Effluent, due to the new flow meter installed at LS #2 on 08/23.

7: Flows bypassed GW-11 Influent and FBR Plant Influent totalizers from 08/01 to 08/31 due to FBR plant influent strainers clogging, except for monthly sampling.

Table 4 - Treatment Plant Operational Metrics

Nevada Environmental Response Trust Groundwater Extraction and Treatment System Enhanced Operational Metrics														
Date	1st Stage FBR Influent			2nd Stage FBR Influent			FBR Plant Effluent ¹							
	Flow (gpm)	pH (s.u.)	ORP (mV)	Flow (gpm)	pH (s.u.)	ORP (mV)	Flow ^{2,3,4} (gpm)	TA - ClO ₄ (mg/L)	ETI - ClO ₄ (mg/L)	TA - ClO ₃ (mg/L)	TA - Cr (TR) (mg/L)	TA - Cr (VI) (mg/L)	TA - NO ₃ - N (mg/L)	ETI - Turbidity (NTU)
08/01/17	876	6.3	-339	982	6.2	-311	954		ND	ND				3
08/02/17	871	6.3	-340	1046	6.3	-314	1,005		ND					3
08/03/17	855	6.1	-362	914	6.6	-330	1,011		ND					3
08/04/17	816	5.9	-360	810	6.7	-342	899		ND					5
08/05/17	861	5.8	-356	928	6.7	-339	0.0	ND	ND					5
08/06/17	972	5.7	-359	1023	6.6	-337	651		ND					6
08/07/17 ⁵	890	5.7	-360	927	6.6	-292	969		ND		0.0031 J	ND	ND	4
08/08/17	924	6.8	-365	844	6.6	-299	1,018		ND					3
08/09/17	913	7.2	-368	840	6.6	-313	1,013		ND					2
08/10/17	941	7.0	-365	983	6.6	-323	1,044		ND					5
08/11/17	953	6.7	-369	942	6.6	-300	1,075		ND					3
08/12/17	930	6.6	-365	979	6.5	-301	1,065	ND	ND					5
08/13/17	911	6.6	-367	1054	6.6	-314	1,061		ND					5
08/14/17 ⁶	850	6.4	-365	710	6.6	-318	1,014		ND		0.015	ND	ND	8
08/15/17	827	6.3	-363	930	6.5	-321	970		ND					10
08/16/17	839	6.2	-366	900	6.5	-328	1,002		ND					9
08/17/17	837	6.0	-305	1009	6.4	-325	997		ND					4
08/18/17	795	5.8	-312	923	6.4	-325	975		ND					3
08/19/17	829	5.7	-337	962	6.4	-329	969	ND	ND					2
08/20/17	795	5.7	-332	980	6.4	-329	967		ND					2
08/21/17 ⁷	801	5.6	-342	898	6.4	-332	914		ND		0.014	ND	ND	5
08/22/17	782	5.2	-296	751	6.4	-328	932		ND					1
08/23/17 ⁴	796	5.1	-226	896	6.5	-321	407		NM					NM
08/24/17	877	5.3	-354	960	6.5	-326	617		ND					2
08/25/17	893	5.5	-372	816	6.6	-338	1,029		ND					11
08/26/17	891	5.4	-368	992	6.6	-338	1,031	ND	ND					12
08/27/17	922	5.1	-370	883	6.6	-341	1,045		ND					13
08/28/17 ⁸	994	5.0	-375	896	6.6	-347	1,042		ND		0.0069 B	ND	ND	35
08/29/17	1,055	6.4	-378	1036	6.5	-342	1,079		ND					5
08/30/17	1,047	6.4	-379	1004	6.6	-346	1,129		ND					13
08/31/17	1,092	5.8	-370	1024	6.5	-345	1,113		ND					17
Monthly Average ²	891	6.0	-353	930	6.5	-326	935	ND	ND	ND	0.0074	ND	ND	7

Notes:

Flow reported as gpm is a daily average calculated from the totalizer reading.

ND = Not detected above laboratory method detection limit (ClO₄ = 0.5 ug/L; ClO₃ = 10 ug/L; NO₃-N = 0.055 mg/L, Cr(VI) = 0.25 ug/L).

NM = No measurement.

B = Compound was found in the blank and sample.

J = Result is less than the reporting limit but greater than or equal to the method detection limit and the concentration is an approximate value.

1: ETI = Envirogen internal process control data, TA = TestAmerica data.

2: All average concentrations reported are monthly flow weighted averages.

4: On 08/23, two planned shutdowns occurred: 1) the plant due to an electrical outage by Tronox and 2) some offsite wells due to the installation of a new flow meter at LS #2.

8: FBR Plant Effluent represents effluent discharged to Las Vegas Wash. While this may represent the entirety of the FBR Plant effluent, any diversions to GW-11 are subtracted from the original effluent flow.

9: From 08/04-08/06, there was a diversion event to allow Envirogen to evaluate internal process controls to meet discharge limits.

GW-11 Level Monitoring		
Date	Field Measurement (ft)	Volume (MG)
08/15/17	32.4	33.6
08/29/17	31.4	34.8

GW-11 Leak Detection Monitoring				
Date	Amount Pumped ¹ (gallons)			
	NW Corner	NE Corner	SW Corner	SE Corner
08/17/17	0	2,301	18	228
08/31/17	0	2,226	0	130

GW-11 Composite Sample ²		
Analytes	Concentration	Units
Perchlorate	18	mg/L
Chlorate	19	mg/L
Ammonia as N	0.52	mg/L
Total Phosphorus	ND	mg/L
Total Dissolved Solids (TDS)	8,800	mg/L
Total Suspended Solids (TSS)	36	mg/L
pH	8.5 HF	s.u.
Calcium	450	mg/L
Iron	0.34	mg/L
Chromium (total)	0.025	mg/L
Chromium VI	0.00037 J	mg/L
Chloride	2,800	mg/L
Nitrate as N	ND	mg/L
Sulfate	2,300	mg/L

Notes:

ND = Not detected above laboratory method detection limit (NH₃-N= 0.1 mg/L; Total P = 0.025 ug/L; Cr(VI) = 0.25 ug/L).

J= Result is less than the RL but greater than or equal to the MDL and the concentration is an approximate value. Indicates an Estimated Value for TICs.

HF= Field parameter with a holding time of 15 minutes. Test performed by laboratory at the direction of the Trust.

1: Pumping occurs over three consecutive days. The total amount pumped over the three day period is listed with the last day pumping occurred.

2: Corner Composite Sample collected quarterly, most recent sampling results presented. Sampled on: August 3, 2017 by Envirogen.

Nevada Environmental Response Trust Groundwater Extraction and Treatment System Enhanced Operational Metrics						
Date	Flow ¹ (gpm)	FBR Influent Concentration			Influent Function Load ² (lbs/day)	6 Month Rolling Average (lbs/day)
		ClO ₄ (mg/L)	NO ₃ as N (mg/L)	ClO ₃ (mg/L)		
Sep 2016	843	78	7.7	150	470	562
Oct 2016	860	86	8.6	190	573	563
Nov 2016	935	85	7.1	120	473	515
Dec 2016	979	96	9.0	170	638	542
Jan 2017	1,005	100	9.9	170	675	568
Feb 2017	1,017	103	11	170	697	588
Mar 2017	951	99	12	180	672	621
Apr 2017	1,066	87	13	190	759	652
May 2017	1,102	88	12	190	773	702
June 2017	1,047	95	12	170	720	716
July 2017	1,058	118	12	170	777	733
Aug 2017	1,072	124	9.8	170	773	746

Notes:

Concentrations and flow are presented as monthly average.

1: Flow used in loading calculation is average monthly FBR effluent flow to be consistent with historical loading calculations.

2: FBR loading calculated as $[(0.9 \cdot \text{NO}_3 \text{ as N} + 0.17 \cdot \text{ClO}_3 + 0.18 \cdot \text{ClO}_4) \cdot \text{Flow} \cdot 1440 / 1000000 \cdot 8.34]$.

3: Treatment of AP-5 wash water began on July 17, 2017 and was suspended on August 4, 2017 to allow Envirogen to evaluate internal process control to meet discharge limits. Treatment of AP-5 wash water resumed on August 31, 2017.

Table 7 - AP Area Operational Metrics

Nevada Environmental Response Trust Groundwater Extraction and Treatment System Enhanced Operational Metrics																
Date	E1-1				E1-2				E1-3				E2-1			
	Flow ^{4,5} (gpm)	Water Elevation (ft amsl)	Cr (VI) ¹ (mg/L)	ClO ₂ ¹ (mg/L)	Flow (gpm)	Water Elevation (ft amsl)	Cr (VI) ^{1,6} (mg/L)	ClO ₂ ^{1,6} (mg/L)	Flow (gpm)	Water Elevation (ft amsl)	Cr (VI) ^{1,7} (mg/L)	ClO ₂ ^{1,7} (mg/L)	Flow ^{8,9,10} (gpm)	Water Elevation (ft amsl)	Cr (VI) ^{1,11} (mg/L)	ClO ₂ ^{1,11} (mg/L)
08/01/17	3.2	1720.61			1.5	1717.19			0.82	1710.96			0.00			
08/02/17	3.4	1719.27			1.5	1714.77			0.82	1710.97			0.00			
08/03/17	3.6	1717.94			1.6	1713.64			0.83	1710.97			0.00			
08/04/17	3.1	1716.61			1.5	1712.18			0.82	1710.97			0.00			
08/05/17	3.1				1.5				0.82				0.00			
08/06/17	3.1				1.5				0.82				0.00			
08/07/17	0.02	1726.18	0.017	630	1.5	1717.02	0.015	720	0.89	1710.96	0.053	490	0.00			
08/08/17	0.01	1727.01			1.6	1719.03			0.87	1710.96			0.00			
08/09/17	0.00	1727.08			1.7	1717.53			0.91	1712.51			0.00			
08/10/17	0.00	1727.14			1.7	1714.99			0.89	1713.49			0.76	1729.95		
08/11/17	0.00				1.6	1715.69			0.95	1714.77			1.3	1730.45		
08/12/17	0.00				1.6				0.95				1.3			
08/13/17	0.00				1.6				0.95				1.3			
08/14/17	0.00	1727.22			1.3	1715.77	0.027	1,200	0.77	1713.23	0.068	840	1.0	1729.71	0.031	185
08/15/17	0.00	1727.28			1.8	1717.92			1.1	1714.35			1.4	1729.92		
08/16/17	0.93	1726.23			1.3	1713.01			0.76	1710.98			0.96	1729.62		
08/17/17	0.00	1726.22			0.87	1713.52			0.86	1711.80			0.85	1729.71		
08/18/17	0.90	1726.28			0.90	1724.13			0.95	1714.06			1.4	1730.21		
08/19/17	0.90				0.90				0.95				1.4			
08/20/17	0.90				0.90				0.95				1.4			
08/21/17	0.73	1726.26	0.020	410	0.92	1723.82	0.019	890	0.99	1713.57	0.068	785	1.4	1728.96	0.038	210
08/22/17	0.75	1726.29			0.96	1723.66			1.0	1713.34			1.6	1727.18		
08/23/17 ³	0.42	1726.34			0.62	1717.88			0.72	1717.08			1.4	1728.41		
08/24/17	1.1	1725.53			0.95	1724.17			1.1	1717.92			2.3	1725.64		
08/25/17	0.79	1725.75			0.82	1723.69			0.92	1715.60			1.5	1716.22		
08/26/17	0.79				0.82				0.92				1.5			
08/27/17	0.79				0.82				0.92				1.5			
08/28/17	0.85	1726.02	0.021	420	0.88	1723.79	0.020	940	0.96	1715.47	0.067	930	1.4	1726.24	0.041	260
08/29/17	0.84	1725.96			0.90	1723.50			0.99	1713.35			1.3	1728.41		
08/30/17	0.78	1725.44			0.86	1723.48			0.94	1713.37			1.2	1727.09		
08/31/17	0.92	1725.99			1.2	1723.48			0.89	1713.01			1.7	1728.90		
Monthly Average ²	1.0	1724.94	0.018	547	1.2	1718.87	0.019	912	0.90	1713.21	0.063	742	0.97	1727.91	0.037	220

Notes:

- Flow reported as gpm is a daily average calculated from the totalizer reading. *Italicized* flow rates indicate a totalizer reading was not recorded that day.
- 1: Analytical results are reported from TestAmerica.
- 2: All average concentrations reported are monthly flow weighted averages.
- 3: On 08/23, AP Area wells were offline from 8 am to 10 am for a planned power outage by Tronox.
- 4: E1-1 was offline from 08/07 to 08/18 for maintenance.
- 5: On 08/08, the pump for E1-1 was briefly tested. On 08/16, the replacement pump was installed and was online for part of 08/16 but was turned off for further maintenance at 14:24. E1-1 was back online on 08/18.
- 6: Duplicate taken on 08/07 for well E1-2; average of both values is presented and used for calculation purposes.
- 7: Duplicate taken on 08/21 for well E1-3; average of both values is presented and used for calculation purposes.
- 8: From 08/01 to 08/09, all E2-series wells were offline for maintenance.
- 9: On 08/10, E2-1, E2-3, and E2-5 were back online at 15:43.
- 10: On 08/14, E2-1, E2-3, and E2-5 were offline briefly for replacement of the flow meters for E2-2 and E2-4. All E2 wells back online at 12:47 pm.
- 11: Duplicates taken on 08/14 and 08/28 for well E2-1; average of both values is presented and used for calculation purposes.

Nevada Environmental Response Trust Groundwater Extraction and Treatment System Enhanced Operational Metrics																
Date	E2-2				E2-3				E2-4				E2-5			
	Flow ^{8,10} (gpm)	Water Elevation (ft amsl)	Cr (VI) ^{1,12} (mg/L)	ClO ₂ ^{1,12} (mg/L)	Flow ^{8,9,10} (gpm)	Water Elevation (ft amsl)	Cr (VI) ¹ (mg/L)	ClO ₂ ¹ (mg/L)	Flow ^{8,10,13} (gpm)	Water Elevation (ft amsl)	Cr (VI) ^{1,12} (mg/L)	ClO ₂ ^{1,12} (mg/L)	Flow ^{8,9,10} (gpm)	Water Elevation (ft amsl)	Cr (VI) ¹ (mg/L)	ClO ₂ ¹ (mg/L)
08/01/17	0.00				0.00				0.00				0.00			
08/02/17	0.00				0.00				0.00				0.00			
08/03/17	0.00				0.00				0.00				0.00			
08/04/17	0.00				0.00				0.00				0.00			
08/05/17	0.00				0.00				0.00				0.00			
08/06/17	0.00				0.00				0.00				0.00			
08/07/17	0.00				0.00				0.00				0.00			
08/08/17	0.00				0.00				0.00				0.00			
08/09/17	0.00				0.00				0.00				0.00			
08/10/17	0.00				0.71	1731.30			0.00				0.46	1726.05		
08/11/17	0.00				1.7	1731.43			0.00				0.80	1727.34		
08/12/17	0.00				1.7				0.00				0.80			
08/13/17	0.00				1.7				0.00				0.80			
08/14/17	0.88	1731.91			1.1	1729.30	0.020	860	0.24	1731.77			0.78	1719.45	0.026	1,700
08/15/17	1.3	1730.43			1.8	1730.46			1.4	1731.71			0.90	1722.10		
08/16/17	0.86	1730.09			1.2	1728.94			0.76	1729.25			0.70	1723.60		
08/17/17	1.1	1730.11			1.5	1729.02			1.5	1727.43			0.80	1720.70		
08/18/17	1.4	1729.72			1.6	1728.30			1.1	1728.00			0.90	1718.96		
08/19/17	1.4				1.6				1.1				0.90			
08/20/17	1.4				1.6				1.1				0.90			
08/21/17	1.6	1729.21	0.051	440	1.4	1728.31	0.030	780	0.73	1729.80	0.020	930	0.97	1718.82	0.028	2,000
08/22/17	1.6	1727.78			1.7	1728.53			1.0	1729.60			0.74	1715.84		
08/23/17 ³	1.3	1729.04			1.0	1728.45			1.2	1729.61			0.48	1729.20		
08/24/17	2.0	1727.51			2.0	1728.34			2.2	1727.82			0.94	1725.65		
08/25/17	1.6	1722.86			1.7	1723.77			1.8	1723.60			0.82	1714.94		
08/26/17	1.6				1.7				1.8				0.82			
08/27/17	1.6				1.7				1.8				0.82			
08/28/17	1.2	1724.51	0.048	520	1.8	1722.98	0.032	1,100	1.6	1722.94	0.025	1,000	0.63	1716.20	0.029	1,600
08/29/17	1.6	1729.26			1.9	1725.01			1.6	1726.40			0.78	1723.71		
08/30/17	1.6	1726.30			1.9	1723.83			0.74				0.65	1719.72		
08/31/17	2.0	1727.87			2.1	1726.01			0.00	1731.22			0.81	1725.48		
Monthly Average ²	0.83	1728.33	0.050	474	1.1	1727.75	0.028	922	0.69	1728.40	0.022	960	0.55	1721.73	0.028	1,771

Notes:
 Flow reported as gpm is a daily average calculated from the totalizer reading.
 1: Analytical results are reported from TestAmerica.
 2: All average concentrations reported are monthly flow weighted averages.
 3: On 08/23, AP Area wells were offline intermittently from 8:00 am to 9:19 am for planned Tronox power outage.
 8: From 08/01 to 08/09, all E2-series wells were offline for maintenance.
 9: On 08/10, E2-1, E2-3, and E2-5 were back online at 15:43.
 10: On 08/14, E2-1, E2-3, and E2-5 were offline briefly for replacement of the flow meters for E2-2 and E2-4. All E2 wells back online at 12:47 pm.
 12: On 08/14, E2-2 and E2-4 were not sampled due to flow meter replacement.
 13: On 08/30, E2-4 offline at 10:46 for maintenance.

Figure 1 - GW-11 Pond Volume and FBR Influent Perchlorate Concentration

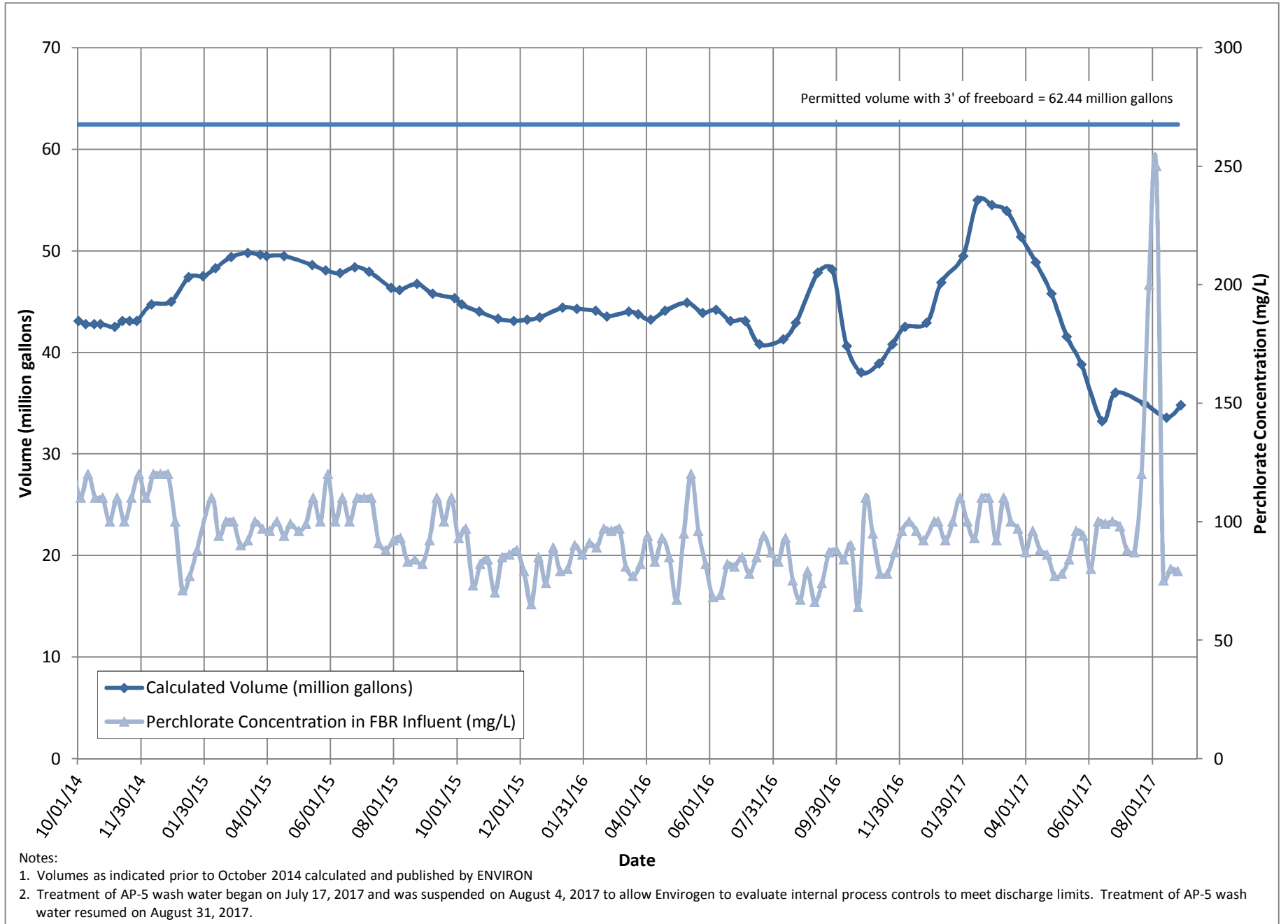


Figure 2 - FBR Equivalent Loading Calculation

