

Table 1 - Seep Well Field (SWF) Operational Metrics

Nevada Environmental Response Trust Groundwater Extraction and Treatment System Enhanced Operational Metrics																				
Date	LS #1 Flow ⁴ (gpm)	PC-116R (East Well)		PC-99R2/R3 (Center Well)		PC-115R (West Well)		PC-117		PC-118		PC-119		PC-120		PC-121		PC-133		
		Flow (gpm)	Water Elevation (ft amsl)	Flow (gpm)	Water Elevation (ft amsl)	Flow (gpm)	Water Elevation (ft amsl)	Flow (gpm)	Water Elevation (ft amsl)	Flow ⁵ (gpm)	Water Elevation (ft amsl)	Flow ⁵ (gpm)	Water Elevation (ft amsl)	Flow (gpm)	Water Elevation (ft amsl)	Flow (gpm)	Water Elevation (ft amsl)	Flow (gpm)	Water Elevation ² (ft amsl)	
04/01/17	538.1	133.7	1539.21	60.9	1543.63	110.8	1542.10	112.2	1538.19	60.2	1546.49	67.2	1547.76	90.7	1547.06	41.6	1548.62	10.4	< 1520.00	
04/02/17	516.8	135.1	1539.16	61.2	1543.45	110.9	1542.07	112.9	1538.16	60.5	1546.46	67.9	1547.74	88.0	1547.04	39.0	1548.60	9.4	1520.01	
04/03/17 ³	589.0	134.0	1539.14	58.8	1543.38	109.5	1542.04	111.2	1538.13	59.1	1546.44	66.7	1547.71	84.8	1547.01	38.1	1548.57	9.5	< 1520.00	
04/04/17	567.6	135.2	1539.08	61.3	1543.36	111.3	1542.02	113.4	1538.09	61.3	1546.41	68.3	1547.69	88.7	1546.98	40.1	1548.54	9.9	< 1520.00	
04/05/17	527.0	128.1	1539.06	58.9	1543.23	106.0	1542.01	107.3	1538.07	56.8	1546.39	63.7	1547.68	83.8	1546.96	37.4	1548.53	9.0	< 1520.00	
04/06/17	559.6	139.4	1539.05	63.4	1543.36	115.0	1541.99	117.1	1538.05	62.7	1546.38	69.7	1547.67	91.3	1546.95	40.4	1548.52	9.8	1520.01	
04/07/17	542.3	133.1	1539.01	60.3	1543.36	110.3	1541.97	111.7	1538.02	60.3	1546.36	67.3	1547.65	86.7	1546.93	39.5	1548.49	9.7	1520.01	
04/08/17	542.4	134.2	1538.97	61.2	1543.26	110.6	1541.94	112.0	1537.99	59.8	1546.33	67.5	1547.61	87.6	1546.90	39.6	1548.46	9.0	< 1520.00	
04/09/17	542.7	134.3	1538.94	61.5	1543.48	111.2	1541.92	113.3	1537.97	60.1	1546.31	67.1	1547.60	88.1	1546.88	39.2	1548.44	9.8	< 1520.00	
04/10/17 ³	549.6	131.6	1538.93	63.6	1543.26	107.9	1541.91	109.9	1537.96	58.0	1546.30	67.6	1547.58	87.1	1546.86	40.7	1548.43	9.5	< 1520.00	
04/11/17	541.0	139.1	1538.89	63.3	1543.23	114.7	1541.89	116.8	1537.93	62.6	1546.28	69.5	1547.57	86.9	1546.84	38.9	1548.41	9.0	< 1520.00	
04/12/17	540.1	132.8	1538.87	60.9	1543.13	110.0	1541.88	112.0	1537.92	59.5	1546.27	67.1	1547.55	90.6	1546.83	40.8	1548.40	9.7	1520.02	
04/13/17	544.0	133.1	1538.85	61.0	1543.22	110.2	1541.86	111.6	1537.90	60.3	1546.25	67.2	1547.54	87.3	1546.81	39.5	1548.38	9.7	1520.02	
04/14/17	536.9	132.3	1538.93	60.6	1543.26	109.3	1541.87	111.4	1537.94	59.2	1546.24	66.2	1547.51	87.7	1546.81	39.0	1548.41	9.7	< 1520.00	
04/15/17	537.4	131.8	1538.87	61.0	1543.20	110.3	1541.84	112.3	1537.89	60.3	1546.21	67.3	1547.49	87.4	1546.78	39.5	1548.38	9.7	< 1520.00	
04/16/17	538.2	131.9	1538.84	60.4	1543.27	110.4	1541.83	111.8	1537.87	59.7	1546.19	67.4	1547.48	83.3	1546.76	37.5	1548.36	9.0	1520.01	
04/17/17 ³	530.1	131.3	1538.81	56.5	1543.12	109.3	1541.81	109.9	1537.84	59.2	1546.18	67.9	1547.45	89.7	1546.74	40.5	1548.34	9.6	1520.01	
04/18/17	557.1	132.3	1538.78	61.3	1543.29	110.7	1541.78	112.1	1537.81	60.6	1546.16	67.5	1547.44	89.8	1546.73	40.4	1548.35	10.4	< 1520.00	
04/19/17	534.5	132.4	1538.75	60.6	1543.11	110.8	1541.76	112.2	1537.78	59.9	1546.13	66.9	1547.41	87.8	1546.71	39.0	1548.33	9.1	1520.01	
04/20/17	534.5	131.2	1538.72	60.1	1543.22	109.8	1541.74	111.9	1537.75	60.1	1546.11	67.0	1547.39	87.0	1546.67	39.4	1548.30	9.7	< 1520.00	
04/21/17	534.7	130.6	1538.69	60.5	1543.09	110.0	1541.71	111.3	1537.73	59.1	1546.08	66.7	1547.37	87.3	1546.65	39.2	1548.28	9.6	< 1520.00	
04/22/17	534.1	132.3	1538.66	61.3	1543.17	110.7	1541.71	112.1	1537.71	60.6	1546.08	66.9	1547.36	87.7	1546.64	39.0	1548.27	9.7	< 1520.00	
04/23/17	534.0	131.8	1538.64	61.0	1543.04	110.3	1541.68	112.3	1537.68	59.6	1546.06	67.3	1547.34	87.4	1546.62	39.5	1548.24	9.7	< 1520.00	
04/24/17 ³	529.0	133.6	1538.62	56.1	1543.03	111.9	1541.69	112.8	1537.67	59.2	1546.04	66.4	1547.32	87.6	1546.60	38.1	1548.22	9.6	< 1520.00	
04/25/17	533.5	132.7	1538.58	61.5	1542.94	111.0	1541.66	112.4	1537.63	60.1	1546.02	67.0	1547.29	88.0	1546.57	39.1	1548.20	9.8	< 1520.00	
04/26/17	533.5	132.0	1538.57	60.8	1543.05	111.0	1541.64	112.4	1537.63	60.1	1546.00	67.7	1547.28	88.0	1546.56	39.8	1548.18	9.1	< 1520.00	
04/27/17	534.4	132.0	1538.54	61.2	1543.06	110.5	1541.61	112.6	1537.59	59.8	1545.97	67.4	1547.26	87.6	1546.53	39.6	1548.16	9.7	< 1520.00	
04/28/17	534.1	129.6	1538.51	60.0	1543.07	108.5	1541.59	109.8	1537.56	58.7	1545.95	65.5	1547.23	85.9	1546.51	38.9	1548.13	9.5	< 1520.00	
04/29/17	534.0	131.3	1538.47	60.4	1543.02	110.4	1541.56	112.5	1537.54	59.7	1545.93	67.4	1547.21	87.5	1546.48	38.9	1548.11	9.7	< 1520.00	
04/30/17	533.3	131.3	1538.46	60.4	1542.89	110.4	1541.55	111.8	1537.53	59.7	1545.92	66.7	1547.20	87.5	1546.47	39.6	1548.10	9.7	< 1520.00	
Monthly Average	540.1	132.8	1538.82	60.7	1543.21	110.5	1541.82	112.1	1537.85	59.9	1546.20	67.2	1547.48	87.6	1546.76	39.4	1548.36	9.6	1520.00	
Analytical ¹	Conc (mg/L)		Date		Conc (mg/L)		Date		Conc (mg/L)		Date		Conc (mg/L)		Date		Conc (mg/L)		Date	
Perchlorate	11	4/12/2017	14	4/12/2017	13	4/12/2017	4.8	4/12/2017	7.1	4/12/2017	2.0	4/12/2017	0.30	4/12/2017	0.30	4/12/2017	0.92	4/13/2017		
Hexavalent Chromium	0.0018	4/12/2017	ND	4/12/2017	ND	4/12/2017	0.0021	4/12/2017	ND	4/12/2017	ND	4/12/2017	ND	4/12/2017	ND	4/12/2017	ND	4/13/2017		
Total Chromium	ND	4/12/2017	ND	4/12/2017	ND	4/12/2017	ND	4/12/2017	ND	4/12/2017	ND	4/12/2017	ND	4/12/2017	ND	4/12/2017	ND	4/13/2017		

Notes:
 Flow reported as gpm is a daily average calculated from the totalizer reading.
 ND = Not detected above laboratory method detection limit (Cr(TR)=2.5 ug/L, Cr(VI) =0.20 ug/L).
 J = Result is less than the RL but greater than or equal to the MDL and the concentration is an approximate value. Indicates an Estimated Value for TICs.
 1: Analytical results are reported from TestAmerica.
 2: A "<" preceding the water elevation indicates the reported water level is below the transducer. Average monthly water elevation calculations include the transducer elevation in instances where the water level is below the transducer.
 3: On 04/03, 04/10, 04/17, and 04/24 SWF and LS #1 totalizers were reset. Instantaneous flow rate at the time of the water level measurement was used for these dates.
 4: On 4/14, LS #1 down from 1:20 pm to 2:00 pm for repairs.
 5: On 4/18, PC-118 and PC-119 directed to LS #1 from 11:25 am to 11:41 am during IX system maintenance.

Nevada Environmental Response Trust Groundwater Extraction and Treatment System Enhanced Operational Metrics																	
Date	LS #3 Flow (gpm)	ART-1/1A		ART-2/2A		ART-3/3A		ART-4/4A		ART-9		ART-7A/7B		ART-8/8A		PC-150	
		Flow (gpm)	Water Elevation (ft amsl)	Flow ⁴ (gpm)	Water Elevation (ft amsl)	Flow (gpm)	Water Elevation (ft amsl)	Flow (gpm)	Water Elevation ² (ft amsl)	Flow ⁵ (gpm)	Water Elevation (ft amsl)	Flow ⁵ (gpm)	Water Elevation (ft amsl)	Flow ^{6,7,8} (gpm)	Water Elevation (ft amsl)	Flow (gpm)	Water Elevation (ft amsl)
04/01/17	324.8	33.9	1587.36	104.6	1587.23	34.6	1584.84	4.8	< 1575.00	60.2	1582.73	17.3	1581.24	120.5	1584.45	0.68	1584.26
04/02/17	296.4	31.6	1587.50	73.9	1587.36	32.9	1584.93	4.7	< 1575.00	57.1	1581.32	17.5	1584.51	114.9	1582.86	0.68	1584.47
04/03/17 ³	454.9	32.8	1587.56	85.4	1587.10	31.6	1584.94	4.1	< 1575.00	56.9	1581.40	25.8	1584.51	113.2	1582.90	4.3	1584.37
04/04/17	326.8	34.5	1587.58	87.3	1587.12	34.5	1584.96	4.9	< 1575.00	61.3	1581.42	16.2	1584.51	119.0	1582.92	1.4	1584.13
04/05/17	302.6	33.9	1587.62	79.6	1587.15	33.9	1585.00	4.2	< 1575.00	58.2	1581.51	16.6	1584.55	113.6	1582.96	0.69	1583.81
04/06/17	323.3	32.8	1587.62	84.3	1587.16	32.8	1585.00	4.2	< 1575.00	57.8	1581.62	15.3	1584.59	113.6	1582.96	0.70	1584.30
04/07/17	325.2	34.0	1587.41	88.1	1586.90	34.0	1584.81	4.9	< 1575.00	58.3	1581.62	16.0	1584.62	122.7	1582.48	0.69	1584.03
04/08/17	342.1	32.0	1587.27	79.3	1586.75	31.3	1584.70	4.9	< 1575.00	55.6	1581.62	16.0	1584.58	139.1	1582.34	0.35	1584.27
04/09/17	340.6	34.3	1587.20	85.3	1586.68	32.9	1584.65	4.9	< 1575.00	60.8	1582.28	16.1	1581.63	150.3	1584.58	0.35	1583.83
04/10/17 ³	346.1	33.8	1587.15	82.4	1586.64	31.5	1584.62	6.5	< 1575.00	57.7	1581.66	18.5	1584.61	146.2	1582.24	3.5	1583.86
04/11/17	340.1	32.7	1587.11	82.1	1586.59	32.0	1584.59	4.2	< 1575.00	57.7	1582.20	16.0	1581.67	143.3	1584.63	0.35	1583.99
04/12/17	339.6	34.6	1587.08	85.8	1586.56	33.2	1584.57	4.8	< 1575.00	60.2	1581.73	16.6	1584.63	151.5	1582.17	0.35	1584.20
04/13/17	340.3	33.3	1587.05	82.5	1586.53	31.2	1584.55	4.2	< 1575.00	58.2	1581.74	17.3	1584.66	144.8	1582.14	0.35	1584.01
04/14/17	340.5	33.4	1587.03	82.9	1586.51	32.0	1584.53	4.9	< 1575.00	58.5	1581.73	16.7	1584.66	144.8	1582.12	0.35	1584.10
04/15/17	339.1	32.6	1587.01	82.5	1586.48	31.2	1584.52	5.5	< 1575.00	58.3	1581.73	16.6	1584.63	145.6	1582.10	0.35	1583.99
04/16/17	338.2	32.6	1586.99	80.6	1586.47	31.3	1584.50	4.2	< 1575.00	57.6	1581.73	16.7	1584.63	143.8	1582.08	0.35	1584.20
04/17/17 ³	343.0	33.9	1586.98	84.4	1586.46	23.3	1584.49	8.2	< 1575.00	59.5	1581.77	24.4	1584.66	145.4	1582.07	1.6	1584.01
04/18/17	351.7	32.7	1586.96	82.9	1586.44	31.3	1584.48	4.9	< 1575.00	58.5	1581.74	16.7	1584.66	144.8	1582.06	0.23	1584.16
04/19/17	335.9	32.8	1586.98	77.4	1586.46	31.4	1584.50	4.9	< 1575.00	57.8	1581.74	16.7	1584.66	143.6	1582.08	0.23	1584.06
04/20/17	350.1	33.8	1586.95	82.9	1586.43	31.8	1584.46	4.8	< 1575.00	61.5	1577.26	18.6	1579.65	145.7	1582.04	0.23	1583.90
04/21/17	354.0	33.0	1587.01	83.2	1586.50	31.6	1584.53	5.5	< 1575.00	60.5	1576.38	21.3	1579.63	104.5	1582.18	0.23	1584.13
04/22/17	353.1	33.4	1586.94	82.2	1586.42	32.0	1584.47	4.9	< 1575.00	57.8	1576.41	19.5	1579.63	141.4	1582.02	0.23	1584.01
04/23/17	355.1	32.6	1586.91	82.5	1586.38	30.5	1584.45	4.9	< 1575.00	56.9	1577.97	19.4	1579.65	146.3	1581.99	0.23	1583.92
04/24/17 ³	367.0	32.8	1586.84	84.3	1586.31	24.1	1584.39	4.3	< 1575.00	68.7	1578.15	24.1	1579.63	198.4	1581.87	2.0	1583.82
04/25/17	360.3	32.8	1586.80	83.1	1586.26	30.7	1584.36	4.9	< 1575.00	55.2	1579.10	20.3	1579.63	146.6	1581.83	0.12	1584.06
04/26/17	353.4	32.8	1586.74	81.7	1586.19	30.7	1584.30	4.9	< 1575.00	56.6	1578.07	18.9	1579.63	132.7	1581.70	0.12	1583.95
04/27/17	366.9	32.7	1586.68	82.7	1586.13	29.9	1584.26	4.9	< 1575.00	54.9	1579.49	19.5	1579.63	96.6	1581.64	0.12	1583.85
04/28/17	362.2	32.1	1586.65	80.5	1586.11	30.7	1584.18	4.8	< 1575.00	53.9	1578.85	19.1	1579.63	54.6	1581.63	0.12	1584.09
04/29/17	366.0	32.6	1586.63	81.9	1586.10	30.6	1584.17	4.9	< 1575.00	54.9	1577.48	19.4	1579.63	128.5	1581.60	0.12	1583.92
04/30/17	366.0	32.6	1586.60	81.9	1586.08	29.9	1584.15	4.2	< 1575.00	54.2	1577.76	19.4	1579.63	128.5	1581.58	0.12	1584.12
Monthly Average	346.8	33.1	1587.07	83.3	1586.58	31.3	1584.56	4.9	< 1575.00	58.2	1580.34	18.4	1582.47	132.8	1582.41	0.70	1584.06
Analytical	Conc (mg/L)	Date	Conc (mg/L)	Date	Conc (mg/L)	Date	Conc (mg/L)	Date	Conc ¹ (mg/L)	Date	Conc (mg/L)	Date	Conc (mg/L)	Date	Conc (mg/L)	Date	
Perchlorate	17	4/13/2017	15	4/13/2017	200	4/13/2017	180	4/13/2017	200	4/13/2017	100	4/13/2017	75	4/13/2017	140	4/13/2017	
Hexavalent Chromium	ND	4/13/2017	0.0040	4/13/2017	0.32	4/13/2017	0.32	4/13/2017	0.75	4/13/2017	0.58	4/13/2017	0.084	4/13/2017	0.18	4/13/2017	
Total Chromium	ND	4/13/2017	0.0060	4/13/2017	0.32	4/13/2017	0.32	4/13/2017	0.79	4/13/2017	0.57	4/13/2017	0.090	4/13/2017	0.18	4/13/2017	

Notes:
 Flow reported as gpm is a daily average calculated from the totalizer reading.
 ND = Not detected above laboratory method detection limit (ClO₂ = 0.5 ug/L; ClO₃ = 10 ug/L; NO₂-N = 0.055 mg/L, Cr(VI) = 0.25 ug/L).
 J = Result is less than the RL but greater than or equal to the MDL and the concentration is an approximate value. Indicates an Estimated Value for TICs.
 ART-1, 2, 3, 4, 7B, and 8 have adjacent recovery wells - "Buddy Wells" - designated by the letter "A".
 1: Analytical results are reported from TestAmerica.
 2: A "*" preceding the water elevation indicates the reported water level is below the transducer. Average monthly water elevation calculations include the transducer elevation in instances where the water level is below the transducer.
 3: On 04/03, 04/10, 04/17, and 04/24 AWF and LS #3 totalizers were reset. Instantaneous flow rate at the time of the water level measurement was used for these dates.
 4: From 4/01 to 04/30, the majority of flow was through ART-2, which does not produce as much water as ART-2A. Both wells had many instances of VFD faults from 04/01 to 04/30; ART-2A had a new pump installed on 04/05 and a new motor installed on 04/06. A replacement VFD was ordered on 04/19.
 5: On 04/20, ART-7A and ART-9 adjusted to meet flow target as directed by the Trust.
 6: On 04/07, ART-8 offline from 12:25 pm to 1:20 pm for pump replacement.
 7: On 04/21, ART-8A offline from 10:18 am to 11:14 am for pump upgrade.
 8: On 04/22, ART-8A adjusted to meet flow target as directed by the Trust.

Table 3 - Interceptor Well Field (IWF) Operational Metrics

Nevada Environmental Response Trust Groundwater Extraction and Treatment System Enhanced Operational Metrics																				
Date	I-AR		I-AA		I-AB		I-AC		I-AD		I-B		I-C		I-D		I-E		I-F	
	Flow (gpm)	Water Elevation ² (ft amsl)	Flow (gpm)	Water Elevation (ft amsl)	Flow (gpm)	Water Elevation (ft amsl)	Flow (gpm)	Water Elevation (ft amsl)	Flow (gpm)	Water Elevation (ft amsl)	Flow (gpm)	Water Elevation ² (ft amsl)	Flow ⁴ (gpm)	Water Elevation (ft amsl)	Flow (gpm)	Water Elevation (ft amsl)	Flow (gpm)	Water Elevation (ft amsl)	Flow (gpm)	Water Elevation ² (ft amsl)
04/01/17	0.17	< 1714.00	1.1	1717.02	0.00	1721.69	0.00	1723.64	0.00	1725.18	1.0	1709.83	2.6	1721.21	2.3	1722.78	1.9	1708.37	4.2	< 1705.00
04/02/17	0.17	< 1714.00	1.1	1717.12	0.00	1721.70	0.00	1723.67	0.00	1725.19	0.96	1709.89	2.6	1721.28	2.3	1722.83	1.9	1708.37	4.2	< 1705.00
04/03/17 ³	0.18	< 1714.00	1.1	1717.21	0.00	1721.69	0.00	1723.64	0.00	1725.18	0.62	1709.82	2.6	1721.32	2.4	1722.82	1.9	1708.36	4.4	< 1705.00
04/04/17	0.17	< 1714.00	1.1	1717.25	0.00	1721.69	0.00	1723.61	0.00	1725.16	1.0	1709.64	2.5	1721.35	2.4	1722.83	1.9	1708.37	4.4	< 1705.00
04/05/17	0.17	< 1714.00	1.1	1717.25	0.00	1721.69	0.02	1723.61	0.00	1725.16	1.0	1709.85	2.5	1721.39	2.4	1722.87	1.9	1708.36	4.4	< 1705.00
04/06/17	0.16	< 1714.00	1.1	1717.37	0.00	1721.69	0.00	1723.58	0.00	1725.19	0.94	1709.82	2.5	1721.42	2.4	1722.90	1.9	1708.37	4.4	< 1705.00
04/07/17	0.16	< 1714.00	1.0	1717.28	0.00	1721.63	0.00	1723.66	0.00	1725.20	0.93	1709.76	3.9	1716.60	2.4	1722.77	1.9	1708.36	4.3	< 1705.00
04/08/17	0.17	< 1714.00	1.0	1717.05	0.00	1721.57	0.00	1723.67	0.00	1725.20	0.89	1709.65	4.5	1716.26	2.4	1722.65	1.9	1708.36	4.4	< 1705.00
04/09/17	0.17	< 1714.00	1.1	1716.52	0.00	1721.51	0.00	1723.65	0.00	1725.19	0.89	1709.89	4.4	1716.15	2.4	1722.60	1.9	1708.37	4.5	< 1705.00
04/10/17 ³	0.17	< 1714.00	1.0	1716.16	0.00	1721.49	0.00	1723.64	0.00	1725.18	0.89	1709.69	4.4	1716.03	2.4	1722.56	1.9	1708.37	4.4	< 1705.00
04/11/17	0.17	< 1714.00	1.0	1716.23	0.00	1721.50	0.00	1723.66	0.00	1725.19	0.88	1709.80	4.4	1715.97	2.4	1722.50	1.9	1708.37	4.4	< 1705.00
04/12/17	0.16	< 1714.00	1.0	1716.25	0.00	1721.47	0.00	1723.67	0.00	1725.19	0.81	1709.79	4.3	1715.84	2.4	1722.45	1.8	1708.37	4.4	< 1705.00
04/13/17	0.16	< 1714.00	1.1	1716.23	0.00	1721.46	0.00	1723.67	0.00	1725.20	0.85	1709.68	4.4	1715.80	2.5	1722.40	1.9	1708.37	4.4	< 1705.00
04/14/17	0.16	< 1714.00	1.0	1716.24	0.00	1721.46	0.00	1723.65	0.00	1725.19	0.82	1709.87	4.2	1715.87	2.4	1722.38	1.8	1708.36	4.3	< 1705.00
04/15/17	0.16	< 1714.00	1.0	1716.36	0.00	1721.48	0.00	1723.65	0.00	1725.18	0.79	1709.67	4.2	1715.83	2.3	1722.35	1.8	1708.36	4.4	< 1705.00
04/16/17	0.16	< 1714.00	1.1	1716.58	0.00	1721.50	0.00	1723.66	0.00	1725.19	0.78	1709.67	4.2	1715.85	2.3	1722.34	1.8	1708.36	4.5	< 1705.00
04/17/17 ³	0.16	< 1714.00	1.0	1716.75	0.00	1721.52	0.00	1723.66	0.00	1725.18	1.1	1709.64	4.2	1715.91	2.4	1722.31	1.8	1708.36	4.4	< 1705.00
04/18/17	0.16	< 1714.00	1.0	1716.98	0.00	1721.53	0.00	1723.65	0.00	1725.18	2.0	1709.88	4.2	1715.91	2.4	1722.29	1.8	1708.37	4.4	< 1705.00
04/19/17	0.16	< 1714.00	1.0	1717.23	0.00	1721.55	0.00	1723.64	0.00	1725.18	0.82	1709.78	4.2	1715.89	2.4	1722.28	1.8	1708.36	4.4	< 1705.00
04/20/17	0.15	< 1714.00	1.0	1718.37	0.00	1721.58	0.00	1723.64	0.00	1725.17	0.81	1709.49	4.2	1715.91	2.4	1722.25	1.8	1708.37	4.4	< 1705.00
04/21/17	0.16	< 1714.00	0.91	1720.07	0.00	1721.63	0.00	1723.64	0.00	1725.17	0.81	1709.59	4.2	1715.96	2.4	1722.25	1.8	1708.36	4.3	< 1705.00
04/22/17	0.15	< 1714.00	0.71	1721.45	0.00	1721.69	0.00	1723.67	0.00	1725.19	0.89	1709.66	4.2	1716.23	2.3	1722.27	1.8	1708.37	4.3	< 1705.00
04/23/17	0.15	< 1714.00	0.68	1721.55	0.00	1721.73	0.00	1723.70	0.00	1725.20	0.85	1709.67	4.0	1716.50	2.3	1722.27	1.8	1708.37	4.4	< 1705.00
04/24/17 ³	0.16	< 1714.00	0.70	1721.59	0.00	1721.75	0.00	1723.70	0.00	1725.21	0.91	1709.53	4.1	1716.62	2.4	1722.28	1.8	1708.37	4.4	< 1705.00
04/25/17	0.16	< 1714.00	0.68	1721.63	0.00	1721.76	0.00	1723.65	0.00	1725.19	0.91	1709.64	4.0	1716.75	2.3	1722.27	1.8	1708.37	4.4	< 1705.00
04/26/17	0.16	< 1714.00	0.69	1721.67	0.00	1721.79	0.00	1723.70	0.00	1725.20	0.86	1709.60	3.9	1716.86	2.3	1722.31	1.8	1708.38	4.4	< 1705.00
04/27/17	0.15	< 1714.00	0.68	1721.60	0.00	1721.76	0.00	1723.68	0.00	1725.20	0.87	1709.23	3.8	1718.02	2.3	1722.33	1.8	1708.38	4.3	< 1705.00
04/28/17	0.16	< 1714.00	0.67	1721.61	0.00	1721.74	0.00	1723.63	0.00	1725.18	0.89	1709.13	3.5	1718.14	2.2	1722.34	1.8	1708.38	4.3	< 1705.00
04/29/17	0.16	< 1714.00	0.67	1721.62	0.00	1721.74	0.00	1723.61	0.00	1725.16	0.89	< 1708.00	3.5	1718.25	2.2	1722.37	1.8	1708.38	4.4	< 1705.00
04/30/17	0.16	< 1714.00	0.68	1721.65	0.00	1721.75	0.00	1723.65	0.00	1725.17	0.84	< 1708.00	3.5	1718.39	2.1	1722.42	1.8	1708.38	4.5	< 1705.00
Monthly Average	0.16	< 1714.00	0.93	1718.40	0.00	1721.62	0.00	1723.65	0.00	1725.19	0.92	1709.57	3.8	1717.45	2.4	1722.48	1.8	1708.37	4.4	< 1705.00
Analytical	Conc (mg/L)	Date	Conc (mg/L)	Date	Conc (mg/L)	Date	Conc (mg/L)	Date	Conc (mg/L)	Date	Conc (mg/L)	Date	Conc (mg/L)	Date	Conc (mg/L)	Date	Conc (mg/L)	Date	Conc (mg/L)	Date
Perchlorate	570	4/11/2017	78	4/11/2017	180	4/11/2017	240	4/5/2017	140	4/5/2017	390	4/11/2017	540	4/11/2017	630	4/11/2017	480	4/6/2017	690	4/6/2017
Hexavalent Chromium	ND	4/11/2017	0.048	4/11/2017	ND	4/11/2017	2.1	4/5/2017	1.2	4/5/2017	0.050	4/11/2017	2.2	4/11/2017	5.3	4/11/2017	6.5	4/6/2017	11	4/6/2017
Total Chromium	0.090	4/11/2017	0.051	4/11/2017	0.017	4/11/2017	2.2	4/5/2017	1.4	4/5/2017	0.061	4/11/2017	2.0	4/11/2017	5.1	4/11/2017	6.7	4/6/2017	12	4/6/2017

Notes:
 Flow reported as gpm is a daily average calculated from the totalizer reading.
 ND = Not detected above laboratory method detection limit (Cr(VI) = 1.0 ug/L).
 1: Analytical results are reported from TestAmerica.
 2: A "<" preceding the water elevation indicates the reported water level is below the transducer. Average monthly water elevation calculations include the transducer elevation in instances where the water level is below the transducer.
 3: On 04/03, 04/10, 04/17, 04/18, and 04/24 IWF totalizers were reset. Instantaneous flow rate at the time of the water level measurement was used for these dates.
 4: On 04/07, I-C, I-L, I-M, I-R, I-X, and I-Y adjusted to meet flow target as directed by the Trust.

Nevada Environmental Response Trust Groundwater Extraction and Treatment System Enhanced Operational Metrics																				
Date	I-G		I-H		I-I		I-J		I-K		I-L		I-M		I-N		I-O		I-P	
	Flow (gpm)	Water Elevation (ft amsl)	Flow (gpm)	Water Elevation (ft amsl)	Flow (gpm)	Water Elevation (ft amsl)	Flow (gpm)	Water Elevation (ft amsl)	Flow (gpm)	Water Elevation (ft amsl)	Flow ^{4,5} (gpm)	Water Elevation (ft amsl)	Flow ^{4,5} (gpm)	Water Elevation (ft amsl)	Flow ⁶ (gpm)	Water Elevation (ft amsl)	Flow ⁷ (gpm)	Water Elevation (ft amsl)	Flow ⁷ (gpm)	Water Elevation (ft amsl)
04/01/17	0.20	1716.38	1.7	1709.26	5.2	1722.08	6.6	1707.08	3.5	1711.67	1.5	1719.77	1.2	1714.40	4.2	1720.02	0.18	1722.14	1.5	1721.63
04/02/17	0.21	1716.38	1.7	1709.08	5.1	1722.11	6.6	1707.09	3.7	1711.73	1.5	1719.91	1.2	1714.43	4.3	1720.06	0.18	1722.17	1.5	1721.67
04/03/17 ³	0.13	1716.37	3.8	1709.17	5.1	1722.09	6.9	1707.07	3.5	1711.65	1.5	1719.99	1.2	1712.18	4.5	1720.06	0.17	1722.16	1.5	1721.67
04/04/17	0.21	1715.51	1.8	1709.33	5.0	1722.08	6.7	1707.08	3.5	1711.59	1.5	1720.08	1.1	1712.20	4.5	1720.09	0.18	1722.15	1.5	1721.67
04/05/17	0.21	1714.70	1.7	1709.13	5.0	1722.10	6.7	1707.08	3.5	1711.62	1.5	1719.00	1.1	1712.24	4.5	1720.13	0.18	1722.17	1.5	1721.70
04/06/17	0.21	1714.72	1.7	1709.28	5.0	1722.12	6.7	1707.09	3.5	1711.75	1.6	1718.89	1.1	1712.04	4.5	1720.17	0.18	1722.19	1.5	1721.72
04/07/17	0.21	1714.72	1.8	1709.29	5.0	1722.13	6.8	1707.09	3.5	1711.73	1.9	1713.28	1.6	1711.66	4.5	1720.06	0.18	1722.20	1.5	1721.74
04/08/17	0.21	1714.71	1.8	1709.03	4.9	1722.11	6.8	1707.08	3.5	1711.64	2.0	1713.66	1.7	1722.59	4.5	1719.99	0.18	1722.18	1.5	1721.72
04/09/17	0.21	1714.48	1.8	1709.34	4.9	1722.10	6.8	1707.07	3.5	1711.59	1.9	1714.22	1.7	1722.57	4.5	1719.97	0.18	1722.18	1.5	1721.72
04/10/17 ³	0.24	1714.15	3.7	1709.10	5.1	1722.12	6.7	1707.08	3.5	1711.66	1.8	1714.69	1.7	1722.54	4.5	1719.96	0.19	1722.19	1.5	1721.75
04/11/17	0.21	1714.14	1.8	1709.27	5.0	1722.13	6.7	1707.08	3.5	1711.69	1.9	1711.46	1.9	1722.19	4.5	1719.88	0.18	1722.21	1.5	1721.77
04/12/17	0.21	1714.13	1.7	1709.36	5.0	1722.14	6.7	1707.08	3.5	1711.74	2.0	1711.69	2.1	1722.18	4.5	1719.81	0.18	1722.22	1.5	1721.78
04/13/17	0.22	1714.12	1.8	1709.10	4.9	1722.13	6.9	1707.09	3.6	1711.67	2.0	1712.22	2.2	1722.15	2.5	1721.64	0.19	1722.22	1.5	1721.78
04/14/17	0.21	1714.11	1.7	1709.34	5.1	1722.13	6.6	1707.08	3.4	1711.65	1.9	1712.75	2.1	1722.14	2.9	1720.00	0.18	1722.21	1.4	1721.79
04/15/17	0.21	1714.03	1.7	1709.05	4.9	1722.13	6.8	1707.09	3.5	1711.61	1.9	1713.27	2.1	1722.13	4.0	1719.97	0.18	1722.22	1.5	1721.80
04/16/17	0.21	1714.03	1.7	1709.08	4.9	1722.14	6.8	1707.08	3.5	1711.64	1.9	1713.37	2.1	1722.12	4.0	1719.94	0.18	1722.23	1.4	1721.82
04/17/17 ³	0.26	1714.02	3.9	1709.37	5.0	1722.14	6.8	1707.09	3.5	1711.64	1.9	1713.71	2.0	1722.10	4.0	1719.92	0.20	1722.23	1.5	1721.82
04/18/17	0.14	1714.03	1.3	1709.04	5.1	1722.13	6.6	1707.09	3.5	1711.61	1.8	1713.86	2.0	1722.10	4.0	1719.90	0.19	1722.22	1.4	1721.82
04/19/17	0.21	1713.27	1.7	1709.36	5.0	1722.13	6.7	1707.08	3.5	1711.61	1.8	1714.33	2.0	1722.10	4.0	1719.90	0.18	1722.23	1.4	1721.84
04/20/17	0.21	1713.30	1.7	1709.05	4.9	1722.12	6.7	1707.09	3.5	1711.57	1.8	1715.76	2.0	1722.08	3.9	1719.88	0.18	1722.22	1.4	1721.85
04/21/17	0.21	1712.54	1.8	1709.32	5.0	1722.13	6.7	1707.08	3.5	1711.58	1.7	1716.06	1.9	1722.12	4.0	1719.85	0.19	1722.23	1.4	1721.86
04/22/17	0.21	1712.41	1.8	1709.07	5.0	1722.15	6.8	1707.09	3.5	1711.68	1.7	1716.45	1.9	1722.14	3.9	1719.88	0.19	1722.25	1.4	1721.89
04/23/17	0.22	1712.40	1.7	1709.38	4.9	1722.17	6.8	1707.09	3.5	1711.88	1.7	1716.50	1.9	1722.13	3.9	1719.87	0.19	1722.26	1.4	1721.90
04/24/17 ³	0.25	1712.41	4.0	1709.28	5.1	1722.17	6.6	1707.09	3.5	1711.86	1.7	1716.63	1.9	1722.13	3.9	1719.87	0.18	1722.28	1.4	1721.91
04/25/17	0.21	1712.40	1.8	1709.36	5.0	1722.15	6.8	1707.08	3.5	1711.73	1.7	1716.68	1.9	1722.12	3.9	1719.87	0.19	1722.26	1.4	1721.90
04/26/17	0.22	1712.37	1.8	1709.21	5.0	1722.17	6.8	1707.09	3.5	1711.84	1.7	1716.87	1.9	1722.15	3.8	1719.90	0.19	1722.27	1.4	1721.92
04/27/17	0.22	1712.35	1.7	1709.43	5.0	1722.13	6.8	1707.08	3.5	1711.80	1.7	1716.26	1.9	1722.20	3.8	1719.86	0.28	1722.01	1.9	1721.01
04/28/17	0.22	1712.02	1.7	1709.49	5.0	1722.00	6.8	1707.08	3.5	1711.67	1.7	1715.99	1.8	1722.23	3.8	1719.84	0.34	1721.86	2.9	1720.73
04/29/17	0.22	1711.08	1.7	1709.52	4.9	1721.94	6.7	1707.08	3.5	1711.60	1.7	1716.02	1.8	1722.27	3.8	1719.84	0.41	1721.75	2.8	1720.55
04/30/17	0.22	1710.54	1.6	1709.37	4.9	1721.92	6.7	1707.08	3.5	1711.64	1.7	1716.69	1.8	1722.30	3.7	1719.84	0.40	1721.70	2.8	1720.45
Monthly Average	0.21	1713.73	2.0	1709.25	5.0	1722.11	6.7	1707.08	3.5	1711.68	1.8	1715.67	1.8	1720.00	4.0	1720.00	0.21	1722.16	1.6	1721.64
Analytical	Conc (mg/L)	Date	Conc (mg/L)	Date	Conc (mg/L)	Date	Conc (mg/L)	Date	Conc (mg/L)	Date	Conc (mg/L)	Date	Conc (mg/L)	Date	Conc (mg/L)	Date	Conc (mg/L)	Date	Conc (mg/L)	Date
Perchlorate	1,400	4/6/2017	1,300	4/6/2017	810	4/5/2017	280	4/5/2017	220	4/5/2017	740	4/11/2017	580	4/11/2017	430	4/6/2017	870	4/6/2017	1,000	4/6/2017
Hexavalent Chromium	23	4/6/2017	17	4/6/2017	12	4/5/2017	3.8	4/5/2017	2.2	4/5/2017	0.30	4/11/2017	6.2	4/11/2017	5.9	4/6/2017	18	4/6/2017	18	4/6/2017
Total Chromium	23	4/6/2017	17	4/6/2017	13.5	4/5/2017	3.9	4/5/2017	2.3	4/5/2017	0.30	4/11/2017	6.2	4/11/2017	6.2	4/6/2017	19	4/6/2017	18	4/6/2017

Notes:
 Flow reported as gpm is a daily average calculated from the totalizer reading.
 ND = Not detected above laboratory method detection limit (ClO₄ = 0.5 ug/L; ClO₃ = 10 ug/L; NO₃-N = 0.055 mg/L, Cr(VI) = 0.25 ug/L).
 1: Analytical results are reported from TestAmerica.
 3: On 04/03, 04/10, 04/17, 04/18, and 04/24 IWF totalizers were reset. Instantaneous flow rate at the time of the water level measurement was used for these dates.
 4: On 04/07, I-C, I-L, I-M, I-R, I-X, and I-Y adjusted to meet flow target as directed by the Trust.
 5: On 04/11, I-L, I-M, I-R, I-X, and I-Y adjusted to meet flow target as directed by the Trust.
 6: Well I-N offline from 5:30 pm on 04/13 to 12:40 pm on 04/14 for motor and pump replacement.
 7: On 04/27, I-O, I-P, I-W, I-X, and I-Y adjusted to meet flow target as directed by the Trust.

Nevada Environmental Response Trust Groundwater Extraction and Treatment System Enhanced Operational Metrics																				
Date	I-Q		I-R		I-S		I-T		I-U		I-V		I-W		I-X		I-Y		I-Z	
	Flow ^a (gpm)	Water Elevation (ft amsl)	Flow ^{a,5,7} (gpm)	Water Elevation ² (ft amsl)	Flow (gpm)	Water Elevation ² (ft amsl)	Flow (gpm)	Water Elevation ² (ft amsl)	Flow (gpm)	Water Elevation (ft amsl)	Flow (gpm)	Water Elevation (ft amsl)	Flow ⁷ (gpm)	Water Elevation ² (ft amsl)	Flow ^{4,5,7} (gpm)	Water Elevation (ft amsl)	Flow ^{4,5,7} (gpm)	Water Elevation ² (ft amsl)	Flow (gpm)	Water Elevation (ft amsl)
04/01/17	0.76	1711.61	0.41	< 1707.00	5.2	< 1710.00	0.53	< 1705.00	0.82	1709.72	4.2	1720.03	0.47	1720.83	1.3	1717.91	1.2	1717.95	7.5	1712.24
04/02/17	0.77	1711.62	0.41	< 1707.00	5.2	< 1710.00	0.53	< 1705.00	0.82	1709.94	4.2	1720.08	0.47	1720.90	1.3	1718.04	1.1	1717.86	7.5	1712.32
04/03/17 ³	0.79	1711.61	0.41	< 1707.00	5.4	< 1710.00	0.52	< 1705.00	0.83	1709.95	4.4	1720.05	0.44	1720.88	2.5	1718.06	1.2	1717.94	7.8	1712.29
04/04/17	0.79	1711.61	0.42	< 1707.00	5.3	< 1710.00	0.54	< 1705.00	0.82	1710.04	4.4	1720.03	0.45	1720.85	1.2	1718.21	1.2	1718.06	7.9	1712.18
04/05/17	0.79	1711.61	0.52	< 1707.00	5.3	< 1710.00	0.54	< 1705.00	0.81	1710.43	4.4	1720.06	0.45	1720.88	1.2	1718.30	1.2	1705.01	7.8	1712.26
04/06/17	0.79	1711.61	0.99	< 1707.00	5.3	< 1710.00	0.54	< 1705.00	0.80	1710.65	4.4	1720.10	0.45	1720.92	1.2	1718.39	1.8	1714.41	7.9	1712.39
04/07/17	0.79	1711.61	1.3	< 1707.00	5.3	< 1710.00	0.55	< 1705.00	0.79	1710.83	4.3	1720.11	0.45	1720.92	1.6	1716.86	1.8	1705.02	7.9	1712.38
04/08/17	0.79	1711.61	1.3	< 1707.00	5.2	< 1710.00	0.55	< 1705.00	0.79	1711.06	4.4	1720.07	0.45	1720.90	1.7	1716.95	1.8	1714.56	7.9	1712.25
04/09/17	0.79	1711.60	1.2	< 1707.00	5.2	< 1710.00	0.55	< 1705.00	0.76	1711.68	4.5	1720.07	0.44	1720.91	1.6	1717.01	1.5	1715.04	7.9	1712.19
04/10/17 ³	0.78	1711.61	1.1	< 1707.00	5.2	< 1710.00	0.55	< 1705.00	0.75	1711.68	4.4	1720.09	0.43	1720.93	3.2	1717.05	1.4	1715.85	7.8	1712.27
04/11/17	0.79	1711.61	1.4	< 1707.00	5.2	< 1710.00	0.55	< 1705.00	0.74	1711.79	4.4	1720.11	0.44	1720.97	1.8	1715.94	1.6	1705.02	7.9	1712.31
04/12/17	0.78	1711.61	1.5	< 1707.00	4.9	< 1710.00	0.55	< 1705.00	0.75	1711.58	4.4	1720.13	0.44	1720.96	2.0	1715.89	1.8	1705.02	7.9	1712.35
04/13/17	0.79	1711.60	1.5	< 1707.00	5.0	< 1710.00	0.56	< 1705.00	0.77	1711.42	4.5	1720.12	0.45	1720.95	2.0	1716.22	1.9	1705.01	8.1	1712.25
04/14/17	0.77	1711.61	1.4	< 1707.00	4.8	< 1710.00	0.54	< 1705.00	0.75	1711.51	4.3	1720.12	0.44	1720.96	1.9	1716.06	1.8	1705.01	7.8	1712.26
04/15/17	0.79	1711.61	1.4	< 1707.00	4.9	< 1710.00	0.55	< 1705.00	0.76	1711.50	4.4	1720.12	0.44	1720.96	1.9	1715.98	1.8	1706.78	7.9	1712.26
04/16/17	0.78	1711.61	1.3	< 1707.00	4.9	< 1710.00	0.55	< 1705.00	0.76	1711.37	4.5	1720.14	0.44	1720.97	1.9	1716.00	1.8	1705.90	8.0	1712.30
04/17/17 ³	0.77	1711.61	1.4	< 1707.00	4.9	< 1710.00	0.55	< 1705.00	0.75	1711.48	4.4	1720.13	0.44	1720.97	3.8	1716.02	1.8	1706.28	7.9	1712.25
04/18/17	0.76	1711.61	1.4	< 1707.00	4.9	< 1710.00	0.55	< 1705.00	0.75	1711.56	4.4	1720.12	0.46	1720.95	3.8	1716.03	1.7	1709.24	7.9	1712.21
04/19/17	0.77	1711.61	1.3	< 1707.00	4.9	< 1710.00	0.55	< 1705.00	0.73	1712.08	4.4	1720.13	0.45	1720.96	1.9	1716.05	1.6	1714.64	7.9	1712.21
04/20/17	0.77	1711.62	1.2	1718.51	5.0	< 1710.00	0.55	< 1705.00	0.44	1721.65	4.4	1720.11	0.45	1720.93	1.9	1716.01	1.4	1715.71	7.9	1712.15
04/21/17	0.77	1711.56	1.2	1718.43	5.1	< 1710.00	0.56	< 1705.00	0.36	1714.08	4.4	1720.13	0.45	1720.97	1.9	1716.02	1.3	1716.29	7.9	1712.20
04/22/17	0.76	1711.56	1.2	1718.66	5.2	< 1710.00	0.56	< 1705.00	0.60	1715.18	4.4	1720.17	0.44	1721.01	1.9	1716.03	1.2	1717.00	7.9	1712.32
04/23/17	0.76	1711.56	1.2	1718.76	5.2	1710.01	0.56	< 1705.00	0.54	1715.54	4.4	1720.19	0.44	1721.02	1.9	1716.02	1.2	1716.90	8.0	1712.36
04/24/17 ³	0.76	1711.56	1.2	1718.71	5.2	< 1710.00	0.57	< 1705.00	0.50	1715.83	4.4	1720.20	0.42	1721.03	3.8	1716.01	1.3	1716.90	7.9	1712.36
04/25/17	0.77	1711.55	1.2	1718.66	5.2	< 1710.00	0.56	< 1705.00	0.51	1715.99	4.4	1720.16	0.44	1721.02	1.9	1715.99	1.2	1717.10	7.9	1712.24
04/26/17	0.77	1711.56	1.2	1718.68	5.2	1710.01	0.56	< 1705.00	0.50	1716.12	4.4	1720.20	0.43	1721.05	1.9	1716.04	1.2	1717.32	7.9	1712.39
04/27/17	0.70	1720.43	1.3	1718.20	5.2	< 1710.00	0.56	< 1705.00	0.47	1716.60	4.4	1720.07	0.84	< 1710.00	2.0	1714.90	1.5	< 1705.00	7.9	1712.28
04/28/17	0.26	1715.35	1.3	1718.11	5.2	< 1710.00	0.56	< 1705.00	0.46	1716.55	4.4	1719.84	1.3	< 1710.00	2.2	1714.99	1.9	1705.01	7.8	1711.89
04/29/17	0.78	1711.32	1.3	1718.23	5.2	< 1710.00	0.56	< 1705.00	0.46	1716.61	4.4	1719.72	1.2	< 1710.00	2.1	1715.00	1.8	< 1705.00	7.7	1711.66
04/30/17	0.76	1711.33	1.2	1718.72	5.2	< 1710.00	0.56	< 1705.00	0.42	1717.05	4.5	1719.67	1.2	< 1710.00	2.1	1715.00	1.7	1722.15	8.0	1711.58
Monthly Average	0.76	1712.00	1.1	1711.22	5.1	1710.00	0.55	< 1705.00	0.67	1713.05	4.4	1720.08	0.54	1719.49	2.0	1716.43	1.5	1711.97	7.9	1712.22
Analytical	Conc (mg/L)	Date	Conc (mg/L)	Date	Conc (mg/L)	Date	Conc (mg/L)	Date	Conc (mg/L)	Date	Conc (mg/L)	Date	Conc (mg/L)	Date	Conc (mg/L)	Date	Conc (mg/L)	Date	Conc (mg/L)	Date
Perchlorate	1.100	4/6/2017	990	4/11/2017	590	4/11/2017	1,700	4/6/2017	1,700	4/6/2017	860	4/5/2017	900	4/6/2017	910	4/6/2017	1,200	4/11/2017	470	4/5/2017
Hexavalent Chromium	21	4/6/2017	0.14	4/11/2017	0.57	4/11/2017	23	4/6/2017	22	4/6/2017	16	4/5/2017	18	4/6/2017	7.9	4/6/2017	0.20	4/11/2017	9.5	4/5/2017
Total Chromium	21	4/6/2017	0.15	4/11/2017	0.59	4/11/2017	23	4/6/2017	22	4/6/2017	18	4/5/2017	18	4/6/2017	8.6	4/6/2017	0.22	4/11/2017	11	4/5/2017

Notes:
 Flow reported as gpm is a daily average calculated from the totalizer reading.
 ND = Not detected above laboratory method detection limit (ClO₄ = 0.5 ug/L; ClO₃ = 10 ug/L; NO₃-N = 0.055 mg/L, Cr(VI) = 0.25 ug/L).
 1: Analytical results are reported from TestAmerica.
 2: A "<" preceding the water elevation indicates the reported water level is below the transducer. Average monthly water elevation calculations include the transducer elevation in instances where the water level is below the transducer.
 3: On 04/03, 04/10, 04/17, 04/18, and 04/24 IWF totalizers were reset. Instantaneous flow rate at the time of the water level measurement was used for these dates.
 4: On 04/07, I-C, I-L, I-M, I-R, I-X, and I-Y adjusted to meet flow target as directed by the Trust.
 5: On 04/11, I-L, I-M, I-R, I-X, and I-Y adjusted to meet flow target as directed by the Trust.
 7: On 04/27, I-O, I-P, I-W, I-X, and I-Y adjusted to meet flow target as directed by the Trust.
 8: Well I-Q offline from 8:51 pm on 04/27 to 2:19 pm on 04/28 for motor replacement.
 9: On 04/20, I-R transducer repaired. Water levels prior to transducer repair may be inaccurate.

Table 4 - Treatment Plant Operational Metrics

Nevada Environmental Response Trust Groundwater Extraction and Treatment System Enhanced Operational Metrics																
Date	LS #2	GWTP Effluent				GW-11 Influent				FBR Plant Influent ⁷						
	Flow ⁴ (gpm)	Flow (gpm)	TA - Cr (TR) (mg/L)	TA - Cr (VI) (mg/L)	TA - ClO ₂ (mg/L)	Flow ^{5,6} (gpm)	Cr (TR) (mg/L)	Cr (VI) (mg/L)	ClO ₂ (mg/L)	Flow ^{4,5,6,7} (gpm)	TA - ClO ₂ (mg/L)	ETI - ClO ₂ (mg/L)	TA - ClO ₃ (mg/L)	TA - NO ₃ - N (mg/L)	TA - Cr (TR) (mg/L)	TA - Cr (VI) (mg/L)
04/01/17	828.3	76.7				0.00				993.3	87	84.68				
04/02/17	714.4	76.9				0.00				997.6		84.55				
04/03/17 ³	1007.6	74.3				0.00				1,195.3		89.43				
04/04/17	848.6	75.3				0.00	0.50	0.45	480	1,033.2		83.63	190	12	0.23	0.20
04/05/17	779.8	75.7				0.00				1,010.9		89.00				
04/06/17	786.8	78.2	0.35	ND	600	19.5				1,054.1		90.00				
04/07/17	825.9	81.7				0.00				1,029.3		87.00				
04/08/17	842.8	84.8				0.00				1,043.8	96	86.47				
04/09/17	841.3	83.1				0.00				937.7		69.99				
04/10/17 ³	811.1	82.3				0.00				968.5		85.62		13	0.15	0.14
04/11/17	840.1	82.0				0.00				998.5		91.00				
04/12/17	623.1	83.3				0.00				1,049.6		91.00				
04/13/17	709.6	83.1	0.38	ND	680	0.00				1,036.1		82.00				
04/14/17	739.6	82.4				0.00				1,045.4		82.64				
04/15/17	730.2	83.6				0.00				1,043.3	88	88.39				
04/16/17	610.4	85.8				0.00				1,049.0		98.13				
04/17/17 ³	910.8	86.9				0.00				1,113.2		82.93		12	0.16	0.032
04/18/17	862.1	85.1				0.00				1,050.5		87.00				
04/19/17	532.4	85.3				0.00				1,126.9		83.00				
04/20/17	384.7	82.7	1.8	ND	670	0.00				1,135.4		82.00				
04/21/17	695.5	82.9				0.00				1,125.1		77.00				
04/22/17	677.6	83.0				0.00				1,117.3	86	87.00				
04/23/17	545.1	81.9				0.00				1,098.6		85.00				
04/24/17 ³	892.0	82.9				0.00				1,086.0		94.59				
04/25/17	861.7	82.5				0.00				1,104.4		89.97		13	0.049	0.036
04/26/17	659.2	82.0				0.00				1,149.1		90.00				
04/27/17	382.9	84.7	0.17	ND	540	0.00				1,122.5		85.00				
04/28/17	811.1	86.9				0.00				1,108.3		93.00				
04/29/17	808.3	86.9				0.00				1,086.1	77	89.00				
04/30/17	729.9	85.7				0.00				1,071.8		89.89				
Monthly Average ²	743.1	82.3	0.66	ND	621	0.65	0.50	0.45	480	1,066.0	87	86.69	190	13	0.13	0.090

Notes:
 Flow reported as gpm is a daily average calculated from the totalizer reading.
 NA = Not Analyzed; ND = Not detected above laboratory method detection limit (ClO₂ = 0.5 ug/L; ClO₃ = 10 ug/L; NO₃-N = 0.055 mg/L, Cr(VI) = 0.25 ug/L).
 B = Compound was found in the blank and sample.
 1: ETI = Envirogen internal process control data, TA = TestAmerica data.
 2: All average concentrations reported are monthly flow weighted averages.
 3: On 04/03, 04/10, 04/17, and 04/24 LS#2 totalizer was reset. Instantaneous flow rate at the time of the water level measurement was used for these dates.
 4: On 04/05-04/06, 04/12-04/13, 04/16, and 04/19-04/23, LS #2 flow meter intermittently lost communication with PLC. Flow was not interrupted. For these days, the FBR Plant Influent Flow was estimated by summing flows for LS #1, LS #3, GWTP Effluent, and GW-11 Effluent.
 5: On 04/06, LS #2 and GWTP flow directed to GW-11 from 10:00 am to 10:55 am during the tie in for the AP-5 treatment system. FBR Plant Influent Flow was estimated by subtracting the GW-11 Influent Flow from the sum of flows for LS #1, LS #3, GWTP Effluent, and GW-11 Effluent.
 6: Flows bypassed GW-11 Influent and FBR Plant Influent totalizers from 04/01 to 04/31 due to FBR plant influent strainers clogging, except on 04/06 as noted above.
 7: From 04/01 to 04/31, FBR Plant Influent flow estimated by summing LS #2, GWTP, and FBR Plant Influent totalizers, unless noted otherwise.

Table 4 - Treatment Plant Operational Metrics

Nevada Environmental Response Trust Groundwater Extraction and Treatment System Enhanced Operational Metrics														
Date	1st Stage FBR Influent			2nd Stage FBR Influent			FBR Plant Effluent ⁸							
	Flow (gpm)	pH (s.u.)	ORP (mV)	Flow (gpm)	pH (s.u.)	ORP (mV)	Flow (gpm)	TA - ClO ₄ (mg/L)	ETI - ClO ₄ (mg/L)	TA - ClO ₃ (mg/L)	TA - Cr (TR) (mg/L)	TA - Cr (VI) (mg/L)	TA - NO ₃ - N (mg/L)	ETI - Turbidity (NTU)
04/01/17	1,062.0	7.4	-312	890.7	6.7	-387	961.4	ND	ND					2
04/02/17	1,056.0	7.3	-341	845.6	6.6	-398	962.0		ND					2
04/03/17	1,057.0	7.2	-342	926.7	6.6	-402	972.1			ND		0.023	ND	2
04/04/17	1,055.8	7.2	-324	864.1	6.6	-402	978.2							10
04/05/17	1,041.4	7.3	-284	862.4	6.6	-404	976.1							9
04/06/17	1,109.5	7.3	-286	1,004.2	6.6	-403	950.0							10
04/07/17	1,057.2	7.3	-259	666.9	6.6	-403	995.6							8
04/08/17	1,046.7	7.2	-312	1,016.1	6.6	-405	957.3	ND						6
04/09/17	1,075.5	7.2	-342	660.1	6.6	-406	960.5							4
04/10/17	1,056.3	7.2	-347	895.2	6.6	-405	973.6				0.012	ND	ND	4
04/11/17	1,076.6	7.1	-322	576.3	6.6	-405	959.3							2
04/12/17	1,069.6	6.8	-342	920.0	6.6	-406	985.4							2
04/13/17	1,030.0	6.9	-342	973.1	6.7	-409	955.8							2
04/14/17	1,028.4	6.7	-348	896.9	6.6	-407	951.8							9
04/15/17	1,040.3	6.6	-322	728.2	6.6	-412	955.5	ND						9
04/16/17	1,042.3	6.7	-350	956.7	6.6	-410	976.5							5
04/17/17	1,088.0	6.7	-247	945.7	6.7	-413	1,007.4					0.020	ND	3
04/18/17	1,076.7	6.7	-281	1,076.3	6.6	-410	1,002.1							18
04/19/17	1,129.0	6.6	-337	938.5	6.6	-410	1,055.9							11
04/20/17	1,091.6	6.7	-357	880.4	6.6	-412	1,069.5							22
04/21/17	1,117.4	6.6	-354	1,088.5	6.6	-412	1,058.8							18
04/22/17	1,103.0	6.7	-355	863.9	6.6	-412	1,050.5	ND						9
04/23/17	1,080.8	6.7	-375	610.0	6.6	-413	1,035.6							13
04/24/17	1,128.1	6.7	-378	1,034.9	6.6	-412	1,027.7					0.014	ND	6
04/25/17	1,150.8	6.6	-324	1,055.6	6.6	-413	1,070.0							6
04/26/17	1,152.3	6.7	-337	890.8	6.6	-411	1,074.5							11
04/27/17	1,127.0	6.7	-356	894.0	6.6	-411	1,052.6							2
04/28/17	1,113.4	6.7	-303	955.5	6.6	-411	1,032.4							10
04/29/17	1,096.9	7.2	-341	1,065.2	6.6	-411	1,009.2	ND						8
04/30/17	1,125.6	6.9	-351	1,042.9	6.6	-411	1,004.1							11
Monthly Average ²	1,082.8	6.9	-329	900.8	6.6	-408	1,000.7	ND	ND	ND	0.017	ND	ND	8

Notes:

Flow reported as gpm is a daily average calculated from the totalizer reading.

NA = Not Analyzed; ND = Not detected above laboratory method detection limit (ClO₄ = 0.5 ug/L; ClO₃ = 10 ug/L; NO₃-N = 0.055 mg/L, Cr(VI) = 0.25 ug/L).

H= Sample was prepped or analyzed beyond the specified holding time

J= Result is less than the reporting limit but greater than or equal to the method detection limit and the concentration is an approximate value.

1: ETI = Envirogen internal process control data, TA = TestAmerica data.

2: All average concentrations reported are monthly flow weighted averages.

8: FBR Plant Effluent represents effluent discharged to Las Vegas Wash. While this may represent the entirety of the FBR Plant effluent, any diversions to GW-11 are subtracted from the original effluent flow.

GW-11 Level Monitoring		
Date	Field Measurement (ft)	Volume (MG)
4/11/2017	20.8	48.9
4/26/2017	23.1	45.8

GW-11 Leak Detection Monitoring				
Date	Amount Pumped ¹ (gallons)			
	NW Corner	NE Corner	SW Corner	SE Corner
4/13/2017	0	0	0	0
4/28/2017	0	0	0	0

GW-11 Composite Sample ²		
Analytes	Concentration	Units
Perchlorate	74	mg/L
Chlorate	130	mg/L
Ammonia as N	0.36	mg/L
Total Phosphorus	0.035 J	mg/L
Total Dissolved Solids (TDS)	6,100	mg/L
Total Suspended Solids (TSS)	37	mg/L
pH	8.3	s.u.
Calcium	300	mg/L
Iron	0.15	mg/L
Chromium (total)	0.051	mg/L
Chromium VI	0.033	mg/L
Chloride	1,600	mg/L
Nitrate as N	6.3	mg/L
Sulfate	1,500	mg/L

Notes:
 ND = Not detected above laboratory method detection limit (NH₃-N= 0.1 mg/L; Total P = 0.025 ug/L; Cr(VI) = 0.25 ug/L).
 J= Result is less than the RL but greater than or equal to the MDL and the concentration is an approximate value. Indicates an Estimated Value for TICs.
 1: Pumping occurs over three consecutive days. The total amount pumped over the three day period is listed with the last day pumping occurred.
 2: Corner Composite Sample collected quarterly, most recent sampling results presented. Sampled on: February 14, 2017 by Envirogen.

Nevada Environmental Response Trust Groundwater Extraction and Treatment System Enhanced Operational Metrics						
Date	Flow ¹ (gpm)	FBR Influent Concentration			Influent Function Load ² (lbs/day)	6 Month Rolling Average (lbs/day)
		ClO ₄ (mg/L)	NO ₃ as N (mg/L)	ClO ₃ (mg/L)		
May 2016	976	98	9.0	230	760	639
June 2016	902	75	9.3	130	476	629
July 2016	878	86	11	140	519	626
Aug 2016	901	80	9.2	180	577	581
Sep 2016	843	78	7.7	150	470	562
Oct 2016	860	86	8.6	190	573	563
Nov 2016	935	85	7.1	120	473	515
Dec 2016	979	96	9.0	170	638	542
Jan 2017	1,005	100	9.9	170	675	568
Feb 2017	1,017	103	11	170	697	588
Mar 2017	951	102	12	180	677	622
Apr 2017	1,066	87	13	190	759	653

Notes:

Concentrations and flow are presented as monthly average.

1: Flow used in loading calculation is average monthly FBR effluent flow to be consistent with historical loading calculations.

2: FBR loading calculated as $[(0.9 * NO_3 \text{ as N} + 0.17 * ClO_3 + 0.18 * ClO_4) * Flow * 1440 / 1000000 * 8.34]$.

Nevada Environmental Response Trust Groundwater Extraction and Treatment System Enhanced Operational Metrics																
Date	E1-1				E1-2				E1-3				E2-1 ⁶			
	Flow (gpm)	Water Elevation (ft amsl)	Cr (VI) ³ (mg/L)	ClO ₂ ³ (mg/L)	Flow (gpm)	Water Elevation (ft amsl)	Cr (VI) ⁴ (mg/L)	ClO ₂ ⁴ (mg/L)	Flow (gpm)	Water Elevation (ft amsl)	Cr (VI) ⁵ (mg/L)	ClO ₂ ⁵ (mg/L)	Flow (gpm)	Water Elevation (ft amsl)	Cr (VI) ¹ (mg/L)	ClO ₂ ¹ (mg/L)
04/01/17	3.2				1.2				0.95				0.00			
04/02/17	3.2				1.2				0.95				0.00			
04/03/17	3.2	1,711.68	0.026	735	1.2	1,713.70	0.032	1,900	0.89	1,710.98	0.085	1,100	0.00			
04/04/17	3.5	1,711.70			1.2	1,713.51			0.98	1,710.97			0.00			
04/05/17	2.8	1,711.68			0.95	1,711.87			0.81	1,710.98			0.00			
04/06/17	2.9	1,711.68			1.0	1,716.10			0.84	1,710.98			0.00			
04/07/17	3.1	1,711.68			1.1	1,715.46			0.91	1,710.96			0.00			
04/08/17	3.1				1.1				0.91				0.00			
04/09/17	3.1				1.1				0.91				0.00			
04/10/17	3.3	1,711.67	0.027	810	1.1	1,718.33	0.029	1,500	1.0	1,710.95	0.084	1,200	0.00			
04/11/17	3.3	1,711.68			1.1	1,718.23			1.0	1,710.97			0.00			
04/12/17	3.3	1,711.67			1.2	1,717.60			1.0	1,710.97			0.00			
04/13/17	2.6	1,711.67			0.89	1,718.13			0.82	1,710.97			0.00			
04/14/17	3.4	1,711.64			1.2	1,719.98			1.1	1,710.93			0.00			
04/15/17	3.4				1.2				1.1				0.00			
04/16/17	3.4				1.2				1.1				0.00			
04/17/17	3.0	1,711.67	0.026	780	0.97	1,718.73	0.026	1,500	0.95	1,710.97	0.079	1,050	0.00			
04/18/17	3.4	1,711.67			1.2	1,719.82			1.0	1,710.96			0.00			
04/19/17	3.6	1,711.69			1.2	1,719.09			1.1	1,710.95			0.00			
04/20/17	3.0	1,711.68			1.0	1,717.78			0.92	1,710.97			0.00			
04/21/17	3.3	1,711.67			1.1	1,719.85			1.0	1,710.97			0.00			
04/22/17	3.3				1.1				1.0				0.00			
04/23/17	3.3				1.1				1.0				0.00			
04/24/17	3.5	1,711.68	0.026	795	1.2	1,719.98	0.024	1,500	1.1	1,710.97	0.075	1,200	0.00			
04/25/17	3.2	1,711.68			1.0	1,719.62			0.96	1,710.97			0.00			
04/26/17	3.4	1,711.68			1.1	1,720.37			1.0	1,710.96			0.00			
04/27/17	3.0	1,711.68			0.99	1,720.10			0.90	1,710.97			0.00			
04/28/17	3.5	1,711.68			1.2	1,721.15			1.1	1,710.97			0.00			
04/29/17	3.5				1.2				1.1				0.00			
04/30/17	3.5				1.2				1.1				0.00			
Monthly Average ²	3.2	1711.68	0.026	783	1.1	1717.97	0.027	1,581	0.99	1710.97	0.080	1,145	0.00			

Notes:
 Flow reported as gpm is a daily average calculated from the totalizer reading. *Italicized* flow rates indicate a totalizer reading was not recorded that day.
 H = Sample was prepped or analyzed beyond the specified holding time
 1: Analytical results are reported from TestAmerica.
 2: All average concentrations reported are monthly flow weighted averages.
 3: Duplicates taken on 04/03 and 04/24 for well E1-1; average of both values is presented and used for calculation purposes.
 4: Duplicates taken on 04/10 for well E1-2; average of both values is presented and used for calculation purposes.
 5: Duplicates taken on 04/17 for well E1-3; average of both values is presented and used for calculation purposes.
 6: No flushing and no pumping occurring at E2 plot from 04/01 to 04/30.

Nevada Environmental Response Trust Groundwater Extraction and Treatment System Enhanced Operational Metrics																
Date	E2-2 ⁶				E2-3 ⁶				E2-4 ⁶				E2-5 ⁶			
	Flow (gpm)	Water Elevation (ft amsl)	Cr (VI) ¹ (mg/L)	ClO ₂ ¹ (mg/L)	Flow (gpm)	Water Elevation (ft amsl)	Cr (VI) ¹ (mg/L)	ClO ₂ ¹ (mg/L)	Flow (gpm)	Water Elevation (ft amsl)	Cr (VI) ¹ (mg/L)	ClO ₂ ¹ (mg/L)	Flow (gpm)	Water Elevation (ft amsl)	Cr (VI) ¹ (mg/L)	ClO ₂ ¹ (mg/L)
04/01/17	0.00				0.00				0.00				0.00			
04/02/17	0.00				0.00				0.00				0.00			
04/03/17	0.00				0.00				0.00				0.00			
04/04/17	0.00				0.00				0.00				0.00			
04/05/17	0.00				0.00				0.00				0.00			
04/06/17	0.00				0.00				0.00				0.00			
04/07/17	0.00				0.00				0.00				0.00			
04/08/17	0.00				0.00				0.00				0.00			
04/09/17	0.00				0.00				0.00				0.00			
04/10/17	0.00				0.00				0.00				0.00			
04/11/17	0.00				0.00				0.00				0.00			
04/12/17	0.00				0.00				0.00				0.00			
04/13/17	0.00				0.00				0.00				0.00			
04/14/17	0.00				0.00				0.00				0.00			
04/15/17	0.00				0.00				0.00				0.00			
04/16/17	0.00				0.00				0.00				0.00			
04/17/17	0.00				0.00				0.00				0.00			
04/18/17	0.00				0.00				0.00				0.00			
04/19/17	0.00				0.00				0.00				0.00			
04/20/17	0.00				0.00				0.00				0.00			
04/21/17	0.00				0.00				0.00				0.00			
04/22/17	0.00				0.00				0.00				0.00			
04/23/17	0.00				0.00				0.00				0.00			
04/24/17	0.00				0.00				0.00				0.00			
04/25/17	0.00				0.00				0.00				0.00			
04/26/17	0.00				0.00				0.00				0.00			
04/27/17	0.00				0.00				0.00				0.00			
04/28/17	0.00				0.00				0.00				0.00			
04/29/17	0.00				0.00				0.00				0.00			
04/30/17	0.00				0.00				0.00				0.00			
Monthly Average ²	0.00				0.00				0.00				0.00			

Notes:
 Flow reported as gpm is a daily average calculated from the totalizer reading.
 1: Analytical results are reported from TestAmerica.
 2: All average concentrations reported are monthly flow weighted averages.
 6: No flushing and no pumping occurring at E2 plot from 04/01 to 04/30.

Figure 1 - GW-11 Pond Volume and Perchlorate Concentration

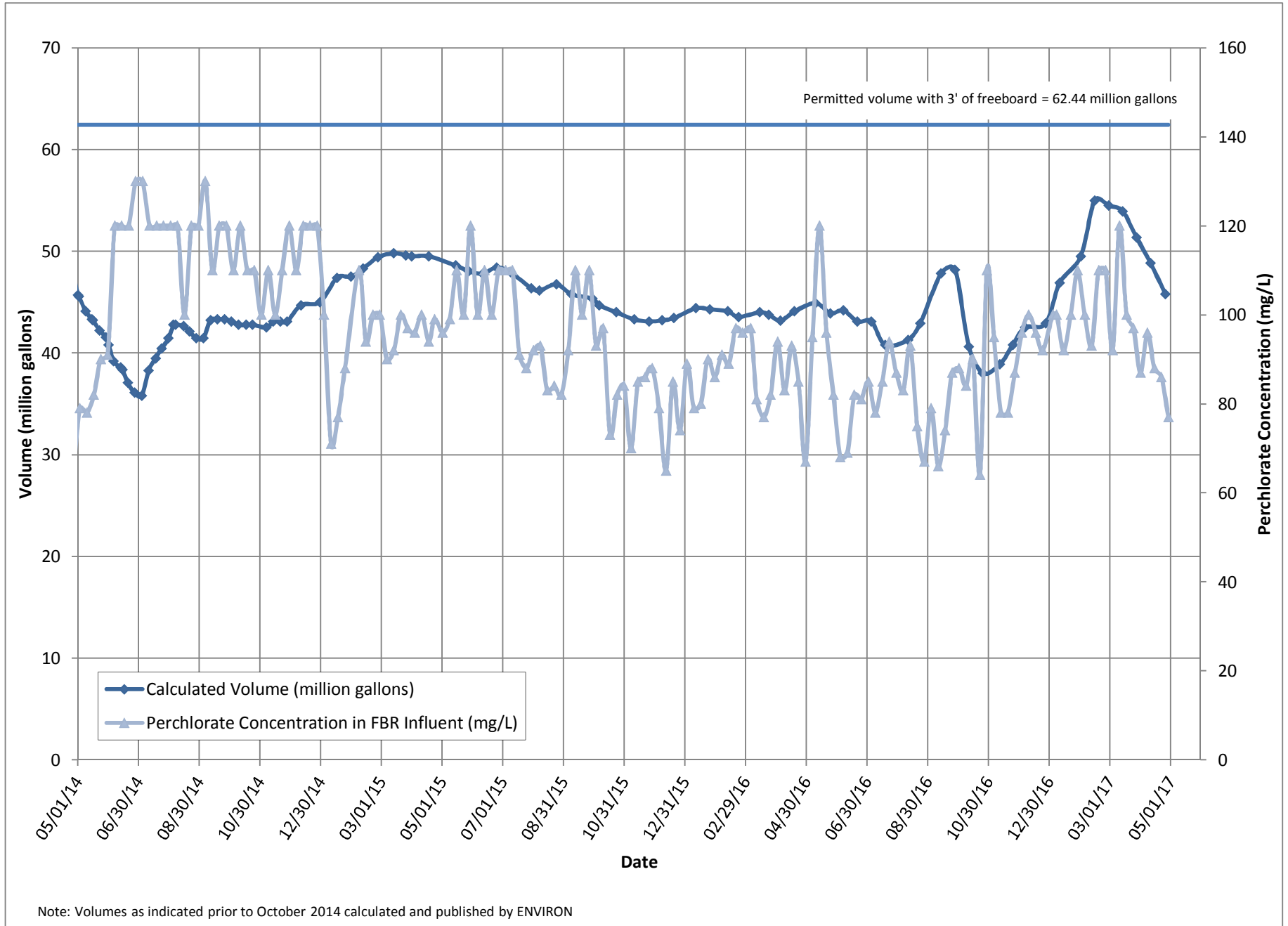


Figure 2 - FBR Equivalent Loading Calculation

