

Table 1 - Seep Well Field (SWF) Operational Metrics

Nevada Environmental Response Trust Groundwater Extraction and Treatment System Enhanced Operational Metrics																				
Date	LS #1 Flow (gpm)	East Well (PC-116R)		Center Well (PC99R3)		West Well (PC-115R)		PC 117		PC 118		PC 119		PC 120		PC 121		PC 133		
		Flow (gpm)	Water Elevation (ft amsl)	Flow (gpm)	Water Elevation (ft amsl)	Flow (gpm)	Water Elevation (ft amsl)	Flow (gpm)	Water Elevation (ft amsl)	Flow (gpm)	Water Elevation (ft amsl)	Flow (gpm)	Water Elevation (ft amsl)	Flow (gpm)	Water Elevation (ft amsl)	Flow (gpm)	Water Elevation (ft amsl)	Flow (gpm)	Water Elevation (ft amsl)	
11/01/16	564	151	1539.8	62	1543.2	106	1543.3	106	1538.8	55	1547.1	57	1548.6	0	1550.4	0	1550.1	8	1520.0	
11/02/16	586	154	1539.8	63	1544.4	108	1543.3	108	1538.8	57	1547.1	58	1548.5	0	1550.3	0	1550.1	8	1520.0	
11/03/16	586	155	1539.8	64	1543.3	109	1543.3	110	1538.8	57	1547.1	58	1548.5	0	1550.3	0	1550.1	8	1520.0	
11/04/16	586	150	1539.8	62	1543.2	104	1543.3	105	1538.8	55	1547.1	57	1548.5	0	1550.3	0	1550.1	7	1520.0	
11/05/16	611	158	1539.8	66	1544.4	110	1543.3	112	1538.8	59	1547.1	60	1548.6	0	1550.3	0	1550.1	9	1520.0	
11/06/16	585	155	1539.8	64	1543.0	109	1543.3	109	1538.8	57	1547.1	59	1548.6	0	1550.4	0	1550.1	8	1520.0	
11/07/16	587	154	1539.8	64	1543.7	109	1543.2	109	1538.8	56	1547.1	59	1548.5	0	1550.3	0	1550.1	8	1520.0	
11/08/16	586	148	1539.8	61	1544.3	104	1543.2	105	1538.8	56	1547.1	56	1548.5	0	1550.3	0	1550.1	7	1520.0	
11/09/16	586	157	1539.7	65	1542.9	111	1543.2	111	1538.7	58	1547.1	59	1548.5	0	1550.3	0	1550.1	8	1520.0	
11/10/16	586	147	1539.8	61	1543.0	104	1543.2	104	1538.8	55	1547.1	56	1548.6	0	1550.3	0	1550.1	7	1520.0	
11/11/16	586	156	1539.8	64	1544.1	110	1543.2	110	1538.7	58	1547.1	59	1548.5	0	1550.3	0	1550.1	8	1520.0	
11/12/16	587	151	1539.8	62	1544.2	106	1543.2	107	1538.7	56	1547.1	57	1548.6	0	1550.4	0	1550.1	8	1520.0	
11/13/16	586	153	1539.8	63	1543.8	107	1543.2	108	1538.8	56	1547.1	57	1548.6	0	1550.4	0	1550.1	8	1520.0	
11/14/16	579	151	1539.8	63	1544.5	106	1543.2	107	1538.8	56	1547.1	57	1548.6	0	1550.4	0	1550.1	8	1520.0	
11/15/16	570	146	1539.8	60	1543.1	102	1543.2	103	1538.7	54	1547.1	55	1548.6	0	1550.4	0	1550.2	7	1520.0	
11/16/16	586	153	1539.7	63	1545.0	107	1543.2	109	1538.9	56	1547.2	58	1548.6	0	1550.4	0	1550.2	8	1520.0	
11/17/16	593	153	1539.6	64	1543.6	104	1543.2	108	1538.8	56	1547.1	57	1548.6	0	1550.4	0	1550.1	8	1520.0	
11/18/16 ²	533	147	1539.7	54	1544.3	96	1543.2	101	1538.8	51	1547.1	54	1548.6	0	1550.4	0	1550.1	7	1520.0	
11/19/16	584	150	1539.8	62	1544.5	104	1543.3	106	1538.9	54	1547.3	57	1548.7	0	1550.5	0	1550.2	8	1520.0	
11/20/16	637	149	1539.7	62	1544.0	105	1543.3	106	1538.9	54	1547.2	56	1548.7	0	1550.4	0	1550.2	7	1520.0	
11/21/16	563	153	1539.7	63	1544.1	108	1543.3	109	1538.9	56	1547.2	58	1548.7	0	1550.5	0	1550.2	8	1520.0	
11/22/16	598	154	1539.7	63	1543.9	107	1543.2	109	1538.8	55	1547.2	58	1548.6	0	1550.4	0	1550.2	8	1520.0	
11/23/16	632	153	1539.7	63	1544.1	107	1543.2	109	1538.8	56	1547.2	57	1548.6	0	1550.4	0	1550.2	7	1520.0	
11/24/16	600	150	1539.7	62	1544.1	106	1543.2	107	1538.8	55	1547.2	57	1548.6	0	1550.4	0	1550.2	8	1520.0	
11/25/16	581	155	1539.7	63	1544.2	109	1543.2	110	1538.8	56	1547.2	59	1548.6	0	1550.4	0	1550.2	7	1520.0	
11/26/16	593	152	1539.7	62	1544.2	107	1543.2	107	1538.8	55	1547.2	57	1548.6	0	1550.4	0	1550.2	8	1520.0	
11/27/16	564	153	1539.7	63	1543.9	107	1543.2	109	1538.8	55	1547.2	58	1548.6	0	1550.4	0	1550.2	8	1520.0	
11/28/16 ³	598	141	1539.7	58	1542.6	99	1543.2	100	1538.8	51	1547.2	54	1548.6	0	1550.4	0	1550.2	8	1520.0	
11/29/16	561	155	1539.9	64	1544.1	109	1543.3	110	1539.0	56	1547.2	58	1548.7	0	1550.4	0	1550.2	8	1520.0	
11/30/16	478	151	1539.8	63	1544.3	107	1543.3	108	1538.9	56	1547.2	57	1548.6	0	1550.4	0	1550.2	8	1520.0	
Monthly Average	582	152	1539.8	62	1543.9	106	1543.2	107	1538.8	56	1547.1	57	1548.6	0	1550.4	0	1550.1	8	1520.0	
Analytical ¹	Conc (mg/L)	Date	Conc (mg/L)	Date	Conc (mg/L)	Date	Conc (mg/L)	Date	Conc (mg/L)	Date	Conc (mg/L)	Date	Conc (mg/L)	Date	Conc (mg/L)	Date	Conc (mg/L)	Date		
Perchlorate	15	11/14/2016	17	11/14/2016	9.5	11/14/2016	8.4	11/14/2016	4.7	11/14/2016	0.43	11/14/2016	0.15	11/14/2016	0.20	11/14/2016	3.0	11/14/2016		
Hexavalent Chromium	0.00043	11/17/2016	ND	11/17/2016	ND	11/17/2016	0.00092	11/17/2016	ND	11/17/2016	ND	11/17/2016	ND	11/17/2016	ND	11/17/2016	ND	11/17/2016		
Total Chromium	ND	11/14/2016	ND	11/14/2016	ND	11/14/2016	ND	10/18/2016	ND	11/14/2016	ND	11/14/2016	ND	11/14/2016	ND	11/14/2016	ND	11/14/2016		

Notes:
 Flow reported as gpm is a daily average calculated from the totalizer reading.
 ND = Not detected above laboratory method detection limit (Cr(TR)=2.5 ug/L, Cr(VI) =0.20 ug/L).
 1: Analytical results are reported from TestAmerica.
 2: On 11/18, East Well, Center Well, West Well, PC 117, PC 118, and PC 119 were intermittently off due to wet well maintenance activities. PC-133 was not off during this day.
 3: On 11/28, LS #1 and SWF down from 8 am to 9:33 am for LS #2 repairs.

Nevada Environmental Response Trust Groundwater Extraction and Treatment System Enhanced Operational Metrics																		
Date	LS #3 Flow (gpm)	ART 1A/1B		ART 2A/2B		ART 3A/3B		ART 4A/4B		ART 6/9		ART 7A/7B		ART 8A/8B		PC-150		
		Flow ⁵ (gpm)	Water Elevation (ft amsl)	Flow ⁶ (gpm)	Water Elevation (ft amsl)	Flow ⁷ (gpm)	Water Elevation (ft amsl)	Flow (gpm)	Water Elevation (ft amsl)	Flow (gpm)	Water Elevation (ft amsl)	Flow (gpm)	Water Elevation (ft amsl)	Flow ⁸ (gpm)	Water Elevation (ft amsl)	Flow ⁹ (gpm)	Water Elevation (ft amsl)	
11/01/16	248	3	1593.1	89	1592.8	38	1590.8	7	1575.0	89	1575.0	18	1578.0	77	1586.2	4	1588.0	
11/02/16	300	0	1592.5	95	1592.1	41	1588.6	7	1575.0	96	1575.0	17	1578.0	73	1584.7	3	1587.5	
11/03/16	298	0	1592.3	96	1592.0	41	1588.5	7	1575.0	95	1575.0	18	1578.0	73	1584.5	4	1587.1	
11/04/16	295	0	1592.2	95	1591.8	40	1588.4	7	1575.0	94	1575.0	18	1578.0	73	1584.4	4	1586.8	
11/05/16	258	0	1592.1	79	1591.8	36	1588.3	6	1575.0	86	1575.0	15	1578.0	62	1584.3	1	1586.5	
11/06/16	287	0	1592.2	99	1591.9	41	1588.5	7	1575.0	92	1575.0	19	1578.0	73	1584.5	0	1591.8	
11/07/16	287	0	1592.0	102	1591.7	41	1588.3	6	1575.0	90	1575.0	18	1578.0	73	1584.2	2	1591.6	
11/08/16	280	0	1592.0	89	1591.6	41	1588.2	7	1575.0	88	1575.0	17	1578.0	72	1584.1	4	1586.7	
11/09/16	275	0	1592.0	88	1591.1	41	1588.3	7	1575.0	88	1575.0	17	1578.0	66	1584.1	3	1586.3	
11/10/16	333	0	1592.0	88	1591.1	41	1588.2	7	1575.0	88	1575.0	18	1578.0	125	1584.1	5	1585.9	
11/11/16	353	0	1591.4	87	1590.4	41	1587.8	7	1575.0	87	1575.0	17	1585.4	146	1585.1	4	1585.7	
11/12/16	351	0	1591.2	88	1590.1	41	1587.6	7	1575.0	88	1578.0	18	1585.4	147	1585.9	4	1585.1	
11/13/16	351	0	1591.0	88	1590.0	40	1587.4	7	1575.0	88	1575.0	17	1585.4	146	1585.7	4	1584.8	
11/14/16	349	0	1590.9	87	1589.8	41	1587.3	7	1575.0	87	1576.2	17	1585.3	146	1585.6	4	1584.7	
11/15/16	350	0	1590.8	88	1589.7	42	1587.2	7	1575.0	86	1575.9	18	1585.3	147	1585.5	4	1584.4	
11/16/16	358	14	1590.7	88	1589.6	40	1587.1	7	1575.0	87	1576.0	17	1585.3	146	1585.4	4	1584.2	
11/17/16	363	20	1590.3	89	1589.4	41	1587.0	7	1575.0	87	1575.9	17	1585.3	147	1585.2	3	1584.0	
11/18/16	349	20	1590.1	86	1589.2	41	1586.9	6	1575.0	86	1576.6	17	1585.3	144	1585.0	4	1583.8	
11/19/16	354	20	1590.0	87	1589.1	41	1586.8	7	1575.0	86	1575.9	17	1585.3	146	1584.9	3	1583.9	
11/20/16	353	20	1589.9	88	1589.0	42	1586.7	7	1575.0	86	1575.9	17	1585.3	147	1584.8	3	1585.1	
11/21/16	353	20	1589.8	86	1588.9	40	1586.7	7	1575.0	85	1575.9	16	1585.3	143	1584.7	3	1584.3	
11/22/16	355	20	1589.8	88	1588.8	42	1586.6	7	1575.0	86	1576.0	16	1585.2	146	1584.7	3	1585.1	
11/23/16	360	20	1589.7	88	1588.8	40	1586.5	7	1575.0	87	1576.0	15	1585.2	146	1584.6	3	1584.9	
11/24/16 ³	341	18	1589.5	81	1589.1	37	1586.4	6	1575.0	81	1575.8	15	1585.2	135	1584.4	3	1585.0	
11/25/16	373	20	1590.0	88	1589.5	40	1587.7	7	1575.0	87	1577.2	15	1585.6	146	1585.0	2	1587.0	
11/26/16	353	20	1589.4	88	1589.0	41	1586.3	7	1575.0	86	1575.8	16	1585.2	147	1584.4	3	1584.9	
11/27/16	352	19	1589.3	87	1588.9	42	1586.3	6	1575.0	85	1578.0	16	1585.2	146	1584.3	2	1584.7	
11/28/16 ⁴	322	19	1580.1	79	1588.9	35	1586.3	5	1575.0	80	1575.8	15	1585.2	130	1584.2	2	1584.3	
11/29/16	394	28	1589.3	114	1588.9	43	1586.3	5	1575.0	80	1576.3	26	1580.9	146	1584.3	3	1584.8	
11/30/16	385	28	1589.0	115	1588.6	41	1586.1	5	1575.0	78	1576.2	24	1580.0	144	1584.0	2	1584.9	
Monthly Average	333	10	1590.5	90	1590.1	40	1587.4	7	1575.0	87	1575.8	17	1582.5	122	1584.8	3	1585.8	
Analytical ¹	Conc (mg/L)		Date	Conc (mg/L)		Date	Conc (mg/L)		Date	Conc (mg/L) ²		Date	Conc (mg/L)		Date	Conc (mg/L)		Date
Perchlorate	21		11/14/2016	14		11/14/2016	230		11/14/2016	210		11/14/2016	82		11/14/2016	220		11/14/2016
Hexavalent Chromium	0.00035		11/17/2016	0.0026		11/17/2016	0.29		11/17/2016	0.39		11/17/2016	0.99		11/17/2016	0.58		11/17/2016
Total Chromium	0.0095		11/14/2016	0.0045		11/14/2016	0.30		11/14/2016	0.38		11/14/2016	0.90		11/14/2016	0.57		11/14/2016

Notes:

- Flow reported as gpm is a daily average calculated from the totalizer reading.
- ND = Not detected above laboratory method detection limit (ClO₄ = 0.5 ug/L; ClO₃ = 10 ug/L; NO₃-N = 0.055 mg/L, Cr(VI) = 0.25 ug/L).
- 1: Analytical results are reported from TestAmerica.
- 2: Concentrations reported for ART-9.
- 3: On 11/24, AWF wells cycled on and off due to sensor malfunction until corrected.
- 4: On 11/28, LS #3 and AWF down from 8 am to 9:43 am for LS #2 repairs.
- 5: On 11/01, well ART 1A/1B was turned on to test repair; offline from 11/02 to 11/15. On 11/16, well was turned on at the direction of the Trust.
- 6: On 11/29, flow was increased for wells ART 1A/1B and ART 2A/2B at the direction of the Trust.
- 7: On 11/28, pumping switched from ART 3B to ART 3A to meet increased pumping at the direction of the Trust.
- 8: On 11/10, pumping switched from ART 8B to ART 8A at 7:43 am to test LS #3 flows.
- 9: Well PC-150 off from 11/05 at 10:28 am to 11/07 at 7:56 pm due to programming fault.

Nevada Environmental Response Trust Groundwater Extraction and Treatment System Enhanced Operational Metrics																				
Date	I-AR		I-AA		I-AB		I-AC		I-AD		I-B		I-C		I-D		I-E		I-F	
	Flow (gpm)	Water Elevation (ft amsl)	Flow* (gpm)	Water Elevation (ft amsl)	Flow* (gpm)	Water Elevation (ft amsl)	Flow (gpm)	Water Elevation (ft amsl)	Flow (gpm)	Water Elevation (ft amsl)	Flow (gpm)	Water Elevation (ft amsl)	Flow (gpm)	Water Elevation (ft amsl)	Flow (gpm)	Water Elevation (ft amsl)	Flow (gpm)	Water Elevation (ft amsl)	Flow (gpm)	Water Elevation (ft amsl)
11/01/16	0.54	1714.0	0.35	1718.2	0.68	1710.0	0.00	1723.4	0.00	1724.9	0.17	1721.2	3.75	1714.5	2.28	1706.3	1.41	1708.0	4.69	1705.0
11/02/16 ²	0.14	1714.0	0.20	1718.2	0.14	1710.0	0.00	1723.4	0.00	1724.9	0.21	1720.1	2.92	1714.5	2.07	1706.2	1.17	1708.0	3.63	1705.0
11/03/16	0.15	1714.0	0.24	1719.4	0.00	1720.9	0.00	1723.4	0.00	1724.9	0.31	1720.8	3.75	1716.5	2.56	1706.1	1.41	1708.0	4.69	1705.0
11/04/16	0.15	1714.0	0.23	1719.4	0.00	1720.9	0.00	1723.5	0.00	1724.9	0.35	1720.5	3.62	1716.5	2.57	1706.2	1.41	1708.0	4.69	1705.0
11/05/16	0.29	1714.0	0.24	1719.4	0.00	1720.9	0.00	1723.6	0.00	1724.9	0.37	1720.7	3.77	1716.5	2.70	1706.2	1.47	1708.0	4.89	1705.0
11/06/16	0.29	1714.0	0.25	1719.4	0.00	1720.9	0.00	1723.6	0.00	1724.9	0.35	1720.4	3.44	1716.6	2.62	1706.0	1.40	1708.0	4.69	1705.0
11/07/16	0.27	1714.0	0.26	1719.4	0.00	1721.0	0.00	1723.6	0.00	1724.9	0.35	1720.5	2.96	1716.7	2.66	1706.0	1.40	1708.1	4.69	1705.0
11/08/16	0.24	1714.0	0.28	1719.4	0.00	1721.0	0.00	1723.6	0.00	1724.9	0.35	1720.5	3.30	1716.8	2.71	1706.0	1.41	1708.0	4.69	1705.0
11/09/16	0.23	1714.0	0.33	1719.5	0.00	1721.0	0.00	1723.6	0.00	1724.9	0.35	1720.5	3.02	1716.9	2.77	1706.0	1.41	1708.0	4.69	1705.0
11/10/16	0.23	1714.0	0.34	1719.5	0.00	1721.1	0.00	1723.6	0.00	1724.9	0.35	1720.7	2.83	1717.0	2.84	1706.0	1.41	1708.0	4.69	1705.0
11/11/16	0.23	1714.0	0.35	1719.6	0.00	1721.1	0.00	1723.5	0.00	1724.9	0.41	1720.8	2.82	1717.1	2.91	1706.1	1.41	1708.0	4.69	1705.0
11/12/16	0.23	1714.0	0.35	1719.7	0.00	1721.1	0.00	1723.6	0.00	1724.9	0.45	1720.8	2.81	1717.2	2.98	1706.0	1.41	1708.0	4.69	1705.0
11/13/16	0.23	1714.0	0.35	1719.9	0.00	1721.2	0.00	1723.6	0.00	1724.9	0.44	1720.7	2.81	1717.2	3.06	1706.0	1.41	1708.0	4.69	1705.0
11/14/16	0.23	1714.0	0.35	1720.1	0.00	1721.2	0.00	1723.5	0.00	1724.9	0.47	1720.9	2.81	1717.3	3.15	1706.0	1.41	1708.0	4.56	1705.0
11/15/16	0.23	1714.0	0.35	1720.3	0.00	1721.3	0.00	1723.5	0.00	1724.9	0.47	1720.9	2.81	1717.4	3.07	1706.0	1.41	1708.0	3.75	1705.0
11/16/16	0.23	1714.0	0.35	1720.6	0.00	1721.3	0.00	1723.5	0.00	1724.9	0.47	1720.8	2.81	1717.5	3.23	1706.0	1.41	1708.0	3.75	1705.0
11/17/16	0.24	1714.0	0.35	1720.7	0.00	1710.0	0.00	1723.3	0.00	1724.9	0.47	1720.9	2.82	1717.6	3.34	1706.0	1.41	1708.0	3.76	1705.0
11/18/16	0.23	1714.0	0.35	1720.9	0.00	1721.6	0.00	1723.3	0.00	1724.8	0.47	1720.9	2.81	1717.6	3.46	1706.0	1.41	1708.0	3.75	1705.0
11/19/16	0.23	1714.0	0.35	1721.0	0.00	1721.6	0.00	1723.3	0.00	1724.8	0.47	1721.1	2.80	1717.8	3.61	1706.0	1.40	1708.0	3.74	1705.0
11/20/16	0.23	1714.0	0.35	1721.0	0.00	1721.7	0.00	1723.3	0.00	1724.8	0.47	1721.2	2.82	1717.9	3.75	1706.0	1.41	1708.0	3.76	1705.0
11/21/16	0.23	1714.0	0.35	1721.1	0.00	1721.7	0.00	1723.4	0.00	1724.9	0.47	1721.2	2.81	1718.0	3.73	1706.0	1.41	1708.0	3.75	1705.0
11/22/16	0.23	1714.0	0.35	1721.1	0.00	1721.7	0.00	1723.3	0.00	1724.8	0.47	1721.4	2.80	1718.0	3.74	1706.0	1.40	1708.0	3.74	1705.0
11/23/16	0.23	1714.0	0.35	1721.1	0.00	1721.8	0.00	1723.3	0.00	1724.8	0.47	1721.5	2.81	1718.1	3.78	1706.0	1.41	1708.0	3.75	1705.0
11/24/16	0.23	1714.0	0.33	1721.2	0.00	1721.8	0.00	1723.3	0.00	1724.8	0.47	1721.7	2.95	1718.2	3.83	1706.0	1.41	1708.0	3.75	1705.0
11/25/16	0.23	1714.0	0.24	1721.2	0.00	1721.8	0.00	1723.3	0.00	1724.8	0.47	1721.7	3.75	1718.3	3.94	1706.0	1.41	1708.0	3.75	1705.0
11/26/16	0.23	1714.0	0.54	1721.2	0.00	1721.8	0.00	1723.3	0.00	1724.8	0.47	1721.8	3.75	1718.4	2.50	1706.0	1.41	1708.0	3.75	1705.0
11/27/16	0.23	1714.0	0.70	1721.8	0.00	1720.3	0.00	1723.4	0.00	1724.9	0.47	1721.8	3.75	1718.4	1.87	1721.4	1.41	1708.0	3.75	1705.0
11/28/16	0.23	1714.0	0.62	1720.2	0.00	1721.8	0.00	1723.4	0.00	1724.9	0.47	1721.8	3.75	1718.6	1.88	1721.5	1.41	1708.0	3.75	1705.0
11/29/16	0.23	1714.0	0.66	1720.8	0.00	1721.8	0.00	1723.3	0.00	1724.8	0.47	1721.9	3.75	1718.7	1.87	1721.6	1.41	1708.0	3.75	1705.0
11/30/16	0.23	1714.0	0.70	1720.8	0.00	1721.8	0.00	1723.3	0.00	1724.8	0.47	1721.9	3.75	1718.8	1.88	1721.7	1.44	1708.0	3.75	1705.0
Monthly Average	0.24	1714.0	0.37	1720.2	0.03	1720.2	0.00	1723.4	0.00	1724.9	0.41	1721.1	3.18	1717.4	2.91	1708.1	1.40	1708.0	4.15	1705.0
Analytical ¹	Conc (mg/L)	Date	Conc (mg/L)	Date	Conc (mg/L)	Date	Conc (mg/L)	Date	Conc (mg/L)	Date	Conc (mg/L)	Date	Conc (mg/L)	Date	Conc (mg/L)	Date	Conc (mg/L)	Date	Conc (mg/L)	Date
Perchlorate	490	11/15/2016	92	11/15/2016	270	11/17/2016	270	11/16/2016	170	11/16/2016	400	11/15/2016	650	11/15/2016	760	11/15/2016	630	11/15/2016	840	11/15/2016
Hexavalent Chromium	ND	11/15/2016	0.045	11/15/2016	0.0075	11/17/2016	1.9	11/16/2016	0.039	11/16/2016	0.051	11/15/2016	2.5	11/15/2016	5.9	11/15/2016	7.3	11/15/2016	12	11/15/2016
Total Chromium	0.16	11/15/2016	0.060	11/15/2016	0.032	11/17/2016	3.4	11/16/2016	1.5	11/16/2016	0.059	11/15/2016	2.4	11/15/2016	5.7	11/15/2016	13	11/15/2016	11	11/15/2016

Flow reported as gpm is a daily average calculated from the totalizer reading.

ND = Not detected above laboratory method detection limit (Cr(VI) = 1.0 ug/L).

1: Analytical results are reported from TestAmerica.

2: On 11/02, IWF off for GWTP clarifier maintenance from 9:22 am to 2:50 pm and for level transmitter maintenance.

3: On 11/26, flow rates for wells I-AA, I-M, I-S, I-X, and I-Y were increased to meet IWF flow targets as instructed by the Trust.

4: Well I-AB repaired on 10/31 and remained on to verify repair. On 11/02, well was turned off.

Nevada Environmental Response Trust Groundwater Extraction and Treatment System Enhanced Operational Metrics																				
Date	I-G		I-H		I-I		I-J		I-K		I-L		I-M		I-N		I-O		I-P	
	Flow (gpm)	Water Elevation (ft amsl)	Flow (gpm)	Water Elevation (ft amsl)	Flow (gpm)	Water Elevation (ft amsl)	Flow (gpm)	Water Elevation (ft amsl)	Flow (gpm)	Water Elevation (ft amsl)	Flow ¹ (gpm)	Water Elevation (ft amsl)	Flow ² (gpm)	Water Elevation (ft amsl)	Flow (gpm)	Water Elevation (ft amsl)	Flow (gpm)	Water Elevation (ft amsl)	Flow (gpm)	Water Elevation (ft amsl)
11/01/16	0.13	1710.0	1.10	1709.0	4.69	1721.1	6.09	1707.0	3.65	1708.9	2.20	1711.8	1.41	1720.6	3.75	1712.7	0.40	1720.8	2.25	1709.4
11/02/16 ²	0.12	1710.0	0.99	1709.1	3.70	1721.1	5.11	1707.0	2.94	1709.0	2.01	1711.9	0.95	1720.6	2.96	1712.7	0.31	1720.8	2.09	1709.3
11/03/16	0.14	1710.0	1.16	1709.1	4.69	1721.4	5.63	1707.1	3.75	1709.3	2.53	1711.6	1.17	1721.1	3.75	1715.1	0.35	1721.1	2.43	1709.4
11/04/16	0.14	1710.0	1.10	1709.1	4.69	1721.3	5.63	1707.0	3.75	1708.9	2.53	1711.6	1.13	1721.1	3.75	1714.7	0.35	1721.0	2.36	1709.4
11/05/16	0.14	1710.0	1.14	1709.1	4.89	1721.2	5.87	1707.0	3.89	1708.9	2.66	1711.6	0.98	1721.1	3.91	1714.5	0.37	1721.0	2.41	1709.4
11/06/16	0.14	1710.0	1.11	1709.0	4.69	1721.2	5.62	1707.0	3.71	1708.9	2.57	1711.6	0.94	1721.1	3.75	1714.5	0.35	1720.9	2.28	1709.3
11/07/16	0.14	1710.0	1.04	1709.1	3.98	1721.1	5.63	1707.0	3.69	1709.0	2.61	1711.6	0.94	1721.2	3.75	1714.5	0.33	1720.9	2.26	1709.3
11/08/16	0.14	1710.0	1.05	1709.1	5.39	1721.1	5.63	1707.0	3.68	1708.9	2.69	1711.6	0.94	1721.2	3.75	1714.7	0.35	1720.9	2.24	1709.3
11/09/16	0.14	1710.0	1.05	1709.1	4.69	1721.1	5.62	1707.0	3.68	1708.9	2.47	1711.5	0.94	1721.2	3.75	1714.9	0.35	1720.9	2.23	1709.4
11/10/16	0.14	1710.0	1.06	1709.0	4.93	1721.1	5.62	1707.0	3.67	1709.0	2.34	1715.4	0.94	1721.2	3.75	1715.1	0.35	1720.9	2.23	1709.3
11/11/16	0.14	1710.0	1.11	1709.0	5.63	1721.1	5.63	1707.0	3.69	1708.9	2.34	1716.0	0.94	1721.3	3.75	1715.3	0.35	1720.9	2.24	1709.3
11/12/16	0.14	1710.0	1.15	1709.0	5.63	1721.1	5.63	1707.0	3.67	1708.9	2.34	1716.6	0.94	1721.3	3.75	1715.5	0.35	1720.9	2.31	1709.3
11/13/16	0.14	1710.0	1.08	1709.1	5.62	1721.1	5.62	1707.0	3.67	1708.9	2.34	1716.5	0.94	1721.3	3.75	1715.8	0.35	1720.9	2.33	1709.4
11/14/16	0.14	1716.0	1.00	1709.0	5.62	1721.1	5.62	1707.0	3.68	1708.9	2.34	1716.9	0.94	1721.3	3.75	1716.0	0.35	1720.9	2.33	1709.3
11/15/16	0.13	1719.6	0.96	1709.0	5.63	1721.1	5.63	1707.0	3.69	1708.9	2.34	1717.2	0.98	1721.3	3.75	1716.2	0.35	1720.9	2.33	1709.3
11/16/16	0.13	1721.3	0.97	1709.1	5.62	1721.1	5.62	1707.0	3.70	1708.9	2.76	1717.5	1.18	1721.3	3.75	1716.4	0.35	1720.9	2.34	1709.3
11/17/16	0.13	1719.9	0.94	1709.0	5.64	1721.1	5.64	1707.0	3.67	1708.9	2.82	1717.9	1.05	1721.4	3.77	1716.6	0.35	1720.9	2.33	1709.3
11/18/16	0.14	1721.8	0.94	1709.0	5.63	1721.1	5.63	1707.0	3.66	1708.9	2.81	1718.3	1.33	1721.4	3.76	1716.7	0.35	1720.8	2.33	1709.4
11/19/16	0.14	1713.4	0.94	1709.0	5.61	1721.1	5.61	1707.0	3.67	1708.9	2.80	1718.7	1.29	1721.4	3.77	1716.9	0.35	1720.9	2.32	1709.4
11/20/16	0.14	1710.0	0.95	1709.0	5.64	1721.1	5.64	1707.0	3.70	1708.9	2.82	1719.0	1.21	1721.4	3.82	1717.1	0.35	1720.8	2.32	1709.3
11/21/16	0.14	1710.0	0.95	1709.0	5.63	1721.1	5.63	1707.0	3.68	1709.0	2.81	1719.4	1.10	1721.4	3.87	1717.2	0.35	1720.9	2.25	1709.3
11/22/16	0.14	1710.0	0.94	1709.0	5.61	1721.1	5.61	1707.0	3.65	1708.9	2.27	1719.4	0.95	1721.4	3.87	1717.3	0.35	1720.9	2.28	1709.5
11/23/16	0.14	1710.0	0.94	1709.0	5.62	1721.1	5.62	1707.0	3.67	1708.9	1.88	1719.8	0.94	1721.5	3.90	1717.5	0.35	1720.9	2.33	1709.3
11/24/16	0.14	1710.0	0.94	1709.0	5.63	1721.1	5.63	1707.0	3.75	1708.9	1.94	1720.0	0.94	1721.5	3.75	1717.5	0.35	1720.8	2.33	1709.3
11/25/16	0.14	1714.7	0.94	1709.0	5.63	1721.1	5.63	1707.0	3.75	1709.0	2.08	1720.2	0.94	1721.5	3.75	1717.7	0.35	1720.9	2.34	1709.4
11/26/16	0.14	1717.3	0.96	1709.0	5.62	1721.1	5.62	1707.0	3.75	1708.9	2.37	1720.6	1.40	1721.5	3.75	1717.8	0.35	1720.9	2.35	1709.3
11/27/16	0.14	1716.1	0.97	1709.0	5.62	1721.1	5.62	1707.0	3.75	1709.0	2.31	1723.2	1.41	1721.5	3.75	1717.2	0.35	1720.9	2.35	1709.4
11/28/16	0.14	1717.4	0.94	1709.0	5.62	1721.1	5.62	1707.0	3.75	1708.9	2.24	1723.3	1.39	1721.6	3.75	1716.9	0.35	1720.9	2.35	1709.3
11/29/16	0.13	1716.0	0.94	1709.0	5.62	1721.1	5.62	1707.0	3.75	1708.9	1.64	1723.4	1.15	1721.7	3.75	1716.7	0.35	1720.9	2.32	1709.3
11/30/16	0.14	1714.0	0.94	1709.0	5.63	1721.1	5.63	1707.0	3.75	1709.0	1.87	1722.1	0.94	1721.8	3.75	1716.7	0.31	1720.8	2.32	1709.3
Monthly Average	0.14	1712.9	1.01	1709.0	5.29	1721.1	5.63	1707.0	3.68	1708.9	2.39	1716.9	1.08	1721.3	3.75	1715.9	0.35	1720.9	2.31	1709.3
Analytical ¹	Conc (mg/L)	Date	Conc (mg/L)	Date	Conc (mg/L)	Date	Conc (mg/L)	Date	Conc (mg/L)	Date	Conc (mg/L)	Date	Conc (mg/L)	Date	Conc (mg/L)	Date	Conc (mg/L)	Date	Conc (mg/L)	Date
Perchlorate	1,800	11/15/2016	1,700	11/15/2016	880	11/16/2016	360	11/16/2016	280	11/16/2016	1,000	11/15/2016	860	11/15/2016	610	11/15/2016	1,100	11/15/2016	1,200	11/15/2016
Hexavalent Chromium	23	11/15/2016	21	11/15/2016	11	11/16/2016	3.8	11/16/2016	2.1	11/16/2016	0.38	11/15/2016	7.4	11/15/2016	7.0	11/15/2016	20	11/15/2016	20	11/15/2016
Total Chromium	22	11/15/2016	18	11/15/2016	11	11/16/2016	3.9	11/16/2016	2.2	11/16/2016	0.38	11/15/2016	6.8	11/15/2016	1.4	11/15/2016	17	11/15/2016	19	11/15/2016

Flow reported as gpm is a daily average calculated from the totalizer reading.
 ND = Not detected above laboratory method detection limit (ClO₂ = 0.5 ug/L; ClO₃ = 10 ug/L; NO₃-N = 0.055 mg/L, Cr(VI) = 0.25 ug/L).
 1. Analytical results are reported from TestAmerica.
 2. On 11/02, IWF off partial day for level transmitter and GWTP clarifier maintenance.
 3. On 11/26, flow rates for wells I-AA, I-M, I-S, I-X, and I-Y were increased to meet IWF flow targets as instructed by the Trust.
 5. On 11/29, flow rates for wells I-L, I-S, and I-Y were increased to meet IWF flow targets as instructed by the Trust.
 6. From 11/26 to 11/28, well I-L totalizer lost communication. Seven day average used for calculation purposes.

Nevada Environmental Response Trust Groundwater Extraction and Treatment System Enhanced Operational Metrics																				
Date	I-Q		I-R		I-S		I-T		I-U		I-V		I-W		I-X		I-Y		I-Z	
	Flow ⁷ (gpm)	Water Elevation (ft amsl)	Flow (gpm)	Water Elevation (ft amsl)	Flow ⁵ (gpm)	Water Elevation (ft amsl)	Flow (gpm)	Water Elevation (ft amsl)	Flow (gpm)	Water Elevation (ft amsl)	Flow (gpm)	Water Elevation (ft amsl)	Flow (gpm)	Water Elevation (ft amsl)	Flow ⁵ (gpm)	Water Elevation (ft amsl)	Flow ⁵ (gpm)	Water Elevation (ft amsl)	Flow (gpm)	Water Elevation (ft amsl)
11/01/16	0.47	1711.6	1.17	1707.0	3.75	1710.0	0.46	1705.0	0.81	1707.4	4.69	1718.2	0.92	1710.0	1.41	1713.5	1.11	1717.6	7.50	1710.0
11/02/16 ²	0.43	1711.7	0.92	1707.0	2.26	1710.0	0.40	1705.0	0.68	1707.4	3.69	1718.1	0.73	1710.0	1.11	1713.3	0.58	1717.4	5.90	1710.0
11/03/16	0.51	1711.5	1.17	1707.0	2.81	1710.0	0.47	1705.0	0.83	1707.3	4.69	1718.7	0.94	1710.0	1.41	1715.4	0.70	1719.7	7.50	1710.0
11/04/16	0.50	1711.5	1.17	1707.0	2.81	1710.0	0.47	1705.0	0.82	1707.4	4.69	1718.5	0.94	1710.0	1.41	1715.4	0.70	1719.4	7.50	1710.0
11/05/16	0.53	1711.4	1.22	1707.0	2.93	1710.0	0.49	1705.0	0.86	1707.4	4.89	1718.4	0.98	1710.0	1.47	1715.3	0.53	1719.9	7.82	1710.0
11/06/16	0.45	1711.5	1.17	1707.0	2.81	1710.0	0.47	1705.0	0.82	1707.3	4.69	1718.3	0.94	1710.0	1.41	1715.3	0.46	1720.4	7.50	1710.0
11/07/16	0.43	1719.0	1.17	1707.0	2.81	1710.0	0.47	1705.0	0.83	1707.4	4.69	1718.2	0.94	1710.0	1.41	1715.3	0.46	1720.6	7.50	1710.0
11/08/16	0.52	1711.6	1.17	1707.0	2.81	1710.0	0.47	1705.0	0.82	1707.3	4.69	1718.2	0.94	1710.0	1.41	1715.4	0.45	1720.8	7.50	1710.0
11/09/16	0.54	1711.6	1.17	1707.0	2.81	1710.0	0.47	1705.0	0.82	1707.3	4.69	1718.2	0.94	1710.0	1.41	1715.4	0.46	1721.0	7.50	1710.0
11/10/16	0.53	1711.6	1.34	1707.0	2.81	1710.0	0.47	1705.0	0.82	1707.3	4.69	1718.1	0.94	1710.0	1.36	1715.4	0.46	1721.2	7.50	1710.0
11/11/16	0.53	1711.6	1.35	1707.0	2.81	1710.0	0.47	1705.0	0.82	1707.4	4.69	1718.1	0.94	1710.0	1.41	1715.5	0.46	1721.2	7.50	1710.0
11/12/16	0.55	1711.6	1.15	1707.0	2.81	1710.0	0.47	1705.0	0.82	1707.4	4.69	1718.1	0.94	1710.0	1.41	1715.5	0.79	1721.3	7.50	1710.0
11/13/16	0.58	1711.6	0.94	1707.0	2.81	1710.0	0.47	1705.0	0.82	1707.3	4.69	1718.1	0.94	1710.0	1.41	1715.5	0.90	1718.4	7.50	1710.0
11/14/16	0.58	1711.6	0.94	1707.0	2.81	1710.0	0.47	1705.0	0.82	1707.3	4.06	1718.1	0.94	1710.0	1.41	1715.6	0.92	1719.0	7.50	1710.0
11/15/16	0.59	1711.6	0.94	1707.0	2.81	1710.0	0.47	1705.0	0.82	1707.3	3.75	1718.1	0.94	1710.0	1.41	1715.6	0.92	1718.7	7.50	1710.0
11/16/16	0.59	1711.6	0.94	1707.0	2.81	1710.0	0.47	1705.0	0.82	1707.3	3.75	1718.2	0.94	1710.0	1.32	1715.7	0.93	1718.9	7.50	1710.0
11/17/16	0.59	1711.6	0.94	1707.0	2.82	1710.0	0.47	1705.0	0.81	1707.3	3.76	1718.1	0.94	1710.0	1.22	1715.7	0.92	1719.2	7.52	1710.0
11/18/16	0.58	1711.6	0.94	1707.0	2.81	1710.0	0.47	1705.0	0.81	1707.3	3.75	1718.0	0.94	1710.0	0.83	1715.8	0.91	1719.8	7.50	1710.0
11/19/16	0.54	1711.6	0.93	1707.0	2.80	1710.0	0.47	1705.0	0.82	1707.3	3.74	1718.0	0.93	1710.0	1.14	1715.8	0.51	1720.3	7.48	1710.0
11/20/16	0.47	1711.6	0.94	1707.0	2.82	1710.0	0.47	1705.0	0.82	1707.3	3.76	1718.1	0.94	1710.0	0.94	1715.9	0.47	1720.5	7.52	1710.0
11/21/16	0.47	1711.6	1.04	1707.0	2.81	1710.0	0.47	1705.0	0.81	1707.3	3.75	1718.1	0.94	1710.0	0.94	1716.0	0.47	1720.7	7.50	1710.0
11/22/16	0.47	1711.0	0.93	1707.0	2.80	1710.0	0.47	1705.0	0.80	1707.4	3.74	1718.0	0.93	1710.0	0.93	1716.1	0.45	1720.7	7.48	1710.0
11/23/16	0.47	1711.6	0.94	1707.0	2.81	1710.0	0.47	1705.0	0.80	1707.3	3.75	1718.0	0.94	1710.0	0.94	1716.1	0.45	1721.2	7.50	1710.0
11/24/16	0.47	1711.6	0.94	1707.0	2.81	1710.0	0.47	1705.0	0.80	1707.3	3.75	1718.0	0.94	1710.0	0.94	1716.2	0.46	1721.6	7.50	1710.0
11/25/16	0.47	1711.6	0.94	1707.0	2.81	1710.0	0.47	1705.0	0.81	1707.3	3.75	1718.0	0.94	1710.0	0.94	1716.2	0.45	1722.0	7.50	1710.0
11/26/16	0.47	1711.6	0.94	1707.0	4.32	1710.0	0.47	1705.0	0.81	1707.5	3.75	1718.1	0.94	1710.0	1.73	1716.2	0.91	1722.1	7.50	1710.0
11/27/16	0.26	1711.6	0.94	1707.0	4.69	1710.0	0.47	1705.0	0.81	1707.5	3.75	1718.1	0.94	1710.0	1.87	1712.4	0.94	1720.8	7.50	1710.0
11/28/16	0.67	1711.6	0.94	1707.0	4.08	1710.0	0.47	1705.0	0.82	1707.3	3.75	1718.1	0.94	1710.0	1.88	1712.1	0.89	1720.8	7.50	1710.0
11/29/16	0.47	1711.6	0.94	1707.0	4.57	1710.0	0.47	1705.0	0.82	1707.3	3.75	1718.0	0.94	1710.0	1.87	1712.8	1.00	1721.0	7.50	1710.0
11/30/16	0.47	1711.6	0.94	1707.0	4.15	1710.0	0.47	1705.0	0.94	1707.3	3.75	1718.0	0.94	1710.0	1.88	1712.6	0.85	1719.6	7.50	1710.0
Monthly Average	0.51	1711.8	1.04	1707.0	3.09	1710.0	0.47	1705.0	0.82	1707.3	4.14	1718.1	0.93	1710.0	1.34	1715.1	0.68	1720.2	7.46	1710.0
Analytical ¹	Conc (mg/L)	Date	Conc (mg/L)	Date	Conc (mg/L)	Date	Conc (mg/L)	Date	Conc (mg/L)	Date	Conc (mg/L)	Date	Conc (mg/L)	Date	Conc (mg/L)	Date	Conc (mg/L)	Date	Conc (mg/L)	Date
Perchlorate	1,400	11/15/2016	1,100	11/15/2016	570	11/15/2016	2,000	11/15/2016	2,000	11/15/2016	1,000	11/16/2016	1,000	11/15/2016	1,500	11/15/2016	1,600	11/15/2016	430	11/16/2016
Hexavalent Chromium	22	11/15/2016	0.26	11/15/2016	0.74	11/15/2016	24	11/15/2016	22	11/15/2016	16	11/16/2016	19	11/15/2016	9.6	11/15/2016	0.33	11/15/2016	8.8	11/16/2016
Total Chromium	20	11/15/2016	0.27	11/15/2016	0.76	11/15/2016	23	11/15/2016	21	11/15/2016	16	11/16/2016	18	11/15/2016	8.9	11/15/2016	0.34	11/15/2016	9.2	11/16/2016

Flow reported as gpm is a daily average calculated from the totalizer reading.
 ND = Not detected above laboratory method detection limit (ClO₂ = 0.5 ug/L; ClO₃ = 10 ug/L; NO₃-N = 0.055 mg/L, Cr(VI) = 0.25 ug/L).
 1: Analytical results are reported from TestAmerica.
 2: On 11/02, IWF off partial day for level transmitter and GWTP clarifier maintenance.
 3: On 11/26, flow rates for wells I-AA, I-M, I-S, I-X, and I-Y were increased to meet IWF flow targets as instructed by the Trust.
 5: On 11/29, flow rates for wells I-L, I-S, and I-Y were increased to meet IWF flow targets as instructed by the Trust.
 7: On 11/06, well I-Q off at 4:30 am. Motor and pigtail replaced; well back on at 1:45 pm.

Table 4 - Treatment Plant Operational Metrics

Nevada Environmental Response Trust Groundwater Extraction and Treatment System Enhanced Operational Metrics																	
Date	LS #2	GWTP Effluent				GW-11 Influent				FBR Plant Influent ¹							
	Flow ² (gpm)	Flow ² (gpm)	TA - Cr (TR) (mg/L)	TA - Cr (VI) (mg/L)	TA - ClO ₂ (mg/L)	Flow ⁶ (gpm)	Cr (TR) (mg/L)	Cr (VI) (mg/L)	ClO ₂ (mg/L)	Flow ⁷ (gpm)	TA - ClO ₂ (mg/L)	ETI - ClO ₂ (mg/L)	TA - ClO ₂ (mg/L)	TA - SO ₄ (mg/L)	TA - NO ₃ - N (mg/L)	TA - Cr (TR) (mg/L)	TA - Cr (VI) (mg/L)
11/01/16	802	70				0				871		85					
11/02/16	869	47				801				798		91					
11/03/16	868	64	0.39	ND	720	923				926		52					
11/04/16	865	61				926				956		55					
11/05/16	844	68				905				967	95	57					
11/06/16	858	64				912				958		58					
11/07/16	865	69				920	0.11	0.067	97	958		57	120	1,600	5.8	0.048	0.0024
11/08/16	857	70				914				958		61					
11/09/16	857	70				907				951		63					
11/10/16	906	70	0.33	ND	880	962				959		64					
11/11/16	926	66				981				961		64					
11/12/16	938	63				977				959	78	63					
11/13/16	938	62				975				960		63					
11/14/16	905	64				969				961		63					
11/15/16	906	65				959				903		65			6.4	0.057	0.037
11/16/16	937	66				982				891		73					
11/17/16	944	66	0.24	ND	840	988				890		78					
11/18/16	869	66				924				849		77					
11/19/16	935	66				989				926	78	66					
11/20/16	927	68				987				924		77					
11/21/16	930	64				976				937		66				0.074	0.052
11/22/16	930	69				989				957		66					
11/23/16	937	71				996				952		69					
11/24/16	911	65				985				953		70					
11/25/16	946	65				969				962		68					
11/26/16	934	67				992				907	87	69			7.4		
11/27/16	915	67				43				982		79					
11/28/16	844	66	0.24	ND	860	51				909		76			9.5	0.062	0.054
11/29/16	934	61				0				995		77					
11/30/16	915	65				0				981		78					
Monthly Average ²	900	65	0.29	ND	832	797	0.11	0.067	97	935	85	68	120	1,600	7.1	0.059	0.032

Notes:
 Flow reported as gpm is a daily average calculated from the totalizer reading.
 ND = Not detected above laboratory method detection limit (ClO₂ = 0.5 ug/L; ClO₃ = 10 ug/L; NO₃-N = 0.055 mg/L, Cr(VI) = 0.25 ug/L).
 1: ETI = Envirogen internal process control data, TA = TestAmerica data.
 2: All average concentrations reported are monthly flow weighted averages.
 4: On 11/28, LS #2 off during repairs.
 5: GWTP off from 9:47 am to 2:27 pm for GWTP clarifier maintenance.
 6: Flows bypassed GW-11 Influent and FBR Plant Influent totalizers from 10/21 to 11/01 and 11/27 to 11/30 due to flow reduction caused by algae.
 7: FBR Plant Influent flows estimated using LS #2 and GWTP from 10/20 to 11/01 and 11/27 to 11/30.

Table 4 - Treatment Plant Operational Metrics

Nevada Environmental Response Trust Groundwater Extraction and Treatment System Enhanced Operational Metrics																
Date	1st Stage FBR Influent			2nd Stage FBR Influent			FBR Plant Effluent ^{1,3}									
	Flow (gpm)	pH (s.u.)	ORP ⁸ (mV)	Flow (gpm)	pH (s.u.)	ORP (mV)	Flow ^{9,10} (gpm)	TA - ClO ₂ (mg/L)	ETI - ClO ₂ (mg/L)	TA - ClO ₃ (mg/L)	TA - Cr (TR) (mg/L)	TA - Cr (VI) (mg/L)	TA - SO ₄ (mg/L)	TA - NO ₃ - N (mg/L)	ETI - Turbidity (NTU)	
11/01/16	931	7.5	-306	903	6.6	-380	766		ND						2	
11/02/16	897	7.6	-293	888	6.7	-383	865		ND						2	
11/03/16	900	7.7	-325	857	6.7	-386	887		ND						3	
11/04/16	900	7.6	-330	897	6.6	-389	921		ND						8	
11/05/16	892	7.5	-328	891	6.7	-378	885	ND	ND						15	
11/06/16	870	7.6	-332	895	6.7	-379	936		ND						10	
11/07/16	875	7.6	-343	971	6.7	-384	915		ND	ND	0.041	ND	1,500	ND	10	
11/08/16	877	7.6	-192	933	6.6	-386	939		ND						6	
11/09/16	887	7.6	-345	922	6.7	-392	940		ND						6	
11/10/16	792	7.6	-183	754	6.7	-393	942		ND						6	
11/11/16	880	7.6	-240	895	6.7	-386	931		ND						6	
11/12/16	884	7.6	-355	865	6.7	-384	942	ND	ND						4	
11/13/16	883	7.6	-190	877	6.7	-387	938		ND						4	
11/14/16	750	7.6	-309	683	6.7	-389	937		ND		0.037	ND		ND	52	
11/15/16	944	7.6	-168	877	6.7	-383	792		ND						26	
11/16/16	894	7.7	-312	841	6.8	-400	877		ND						39	
11/17/16	886	7.7	-387	784	6.8	-394	854		ND						39	
11/18/16	871	7.8	-415	766	6.8	-396	807		ND						19	
11/19/16	938	7.8	-286	731	6.8	-386	898	ND	ND						4	
11/20/16	929	7.7	-286	632	6.8	-377	902		ND						53	
11/21/16	962	7.8	-309	701	6.8	-382	890		ND		0.024	ND		ND	52	
11/22/16	994	7.7	-280	902	6.7	-380	941		ND						43	
11/23/16	941	7.7	-287	744	6.7	-382	933		ND						21	
11/24/16	963	7.8	-314	832	6.7	-384	930		ND						21	
11/25/16	975	7.8	-233	861	6.7	-379	942		ND						28	
11/26/16	883	7.8	-248	855	6.8	-377	883	ND	ND						23	
11/27/16	984	7.9	-357	872	6.7	-385	961		ND						24	
11/28/16	982	7.8	-362	787	6.6	-384	922		ND		0.014	ND		ND	33	
11/29/16	1041	7.8	-345	914	6.6	-382	956		ND						33	
11/30/16	1034	7.7	-313	888	6.6	-382	945		ND						9	
Monthly Average ²	915	7.7	-300	841	6.7	-385	906	ND	ND	ND	0.031	ND	1,500	ND	20	

Notes:

- Flow reported as gpm is a daily average calculated from the totalizer reading.
- ND = Not detected above laboratory method detection limit (ClO₂ = 0.5 ug/L; ClO₃ = 10 ug/L; NO₃-N = 0.055 mg/L, Cr(VI) = 0.25 ug/L).
- 1: ETI = Envirogen internal process control data, TA = TestAmerica data.
- 2: All average concentrations reported are monthly flow weighted averages.
- 3: FBR Plant Effluent represents effluent discharged to Las Vegas Wash. While this may represent the entirety of the FBR Plant effluent, any diversions to GW-11 are subtracted from the original effluent flow.
- 8: Faulty connection caused anomalous ORP reading on 11/19 and 11/20. Instrument repaired on 11/20. Monthly average ORP used for calculation purposes on 11/19 and 11/20.
- 9: FBR Plant Effluent flow decreased due to FBR plant effluent strainers clogging from 09/30 to 10/03 because of transition to TK-101 for influent flow during LS #2 and LS #3 pump upgrades.
- 10: FBR Plant down for upgrade of FBR Plant Effluent flow meter on 10/26.

GW-11 Level Monitoring		
Date	Field Measurement (ft)	Volume (MG)
11/11/2016	28.3	38.9
11/24/2016	26.8	40.8

GW-11 Leak Detection Monitoring				
Date	Amount Pumped ¹ (gallons)			
	NW Corner	NE Corner	SW Corner	SE Corner
11/11/2016	0	3,229	0	0
11/24/2016	0	4,632	0	0

GW-11 Composite Sample ²		
Analytes	Concentration	Units
Perchlorate	65	mg/L
Chlorate	120	mg/L
Ammonia as N	0.80	mg/L
Total Phosphorus	0.034	mg/L
Total Dissolved Solids (TDS)	6,200	mg/L
Total Suspended Solids (TSS)	43	mg/L
pH	8.2	s.u.
Calcium	300	mg/L
Iron	0.42	mg/L
Chromium (total)	0.027	mg/L
Chromium VI	0.0037	mg/L
Chloride	1,800	mg/L
Nitrate as N	4.3	mg/L
Sulfate	1,700	mg/L

Notes:

ND = Not detected above laboratory method detection limit (NH₃-N= 0.1 mg/L; Total P = 0.025 ug/L; Cr(VI) = 0.25 ug/L).

1: Pumping occurs over three consecutive days. The total amount pumped over the three day period is listed with the last day pumping occurred.

2: Corner Composite Sample collected quarterly, most recent sampling results presented. Sampled on: October 10, 2016 by Envirogen.

Nevada Environmental Response Trust Groundwater Extraction and Treatment System Enhanced Operational Metrics						
Date	Flow ¹ (gpm)	FBR Influent Concentration			Influent Function Load ² (lbs/day)	6 Month Rolling Average (lbs/day)
		ClO ₄ (mg/L)	NO ₃ as N (mg/L)	ClO ₃ (mg/L)		
Dec 2015	919	76	8.6	160	537	537
Jan 2016	892	85	9.0	160	542	536
Feb 2016	930	93	8.8	300	846	591
Mar 2016	960	84	9.0	160	581	598
April 2016	944	84	9.0	160	572	595
May 2016	976	98	9.0	230	760	639
June 2016	902	75	9.3	130	476	629
July 2016	878	86	11	140	519	626
Aug 2016	901	80	9.2	180	577	581
Sep 2016	843	78	7.7	150	470	562
Oct 2016	860	86	8.6	190	573	563
Nov 2016	935	85	7.1	120	473	515

Notes:

Concentrations and flow are presented as monthly average.

1: Flow used in loading calculation is average monthly FBR effluent flow to be consistent with historical loading calculations.

2: FBR loading calculated as $[(0.9 \times \text{NO}_3 \text{ as N} + 0.17 \times \text{ClO}_3 + 0.18 \times \text{ClO}_4) \times \text{Flow} \times 1440 / 1000000 \times 8.34]$.

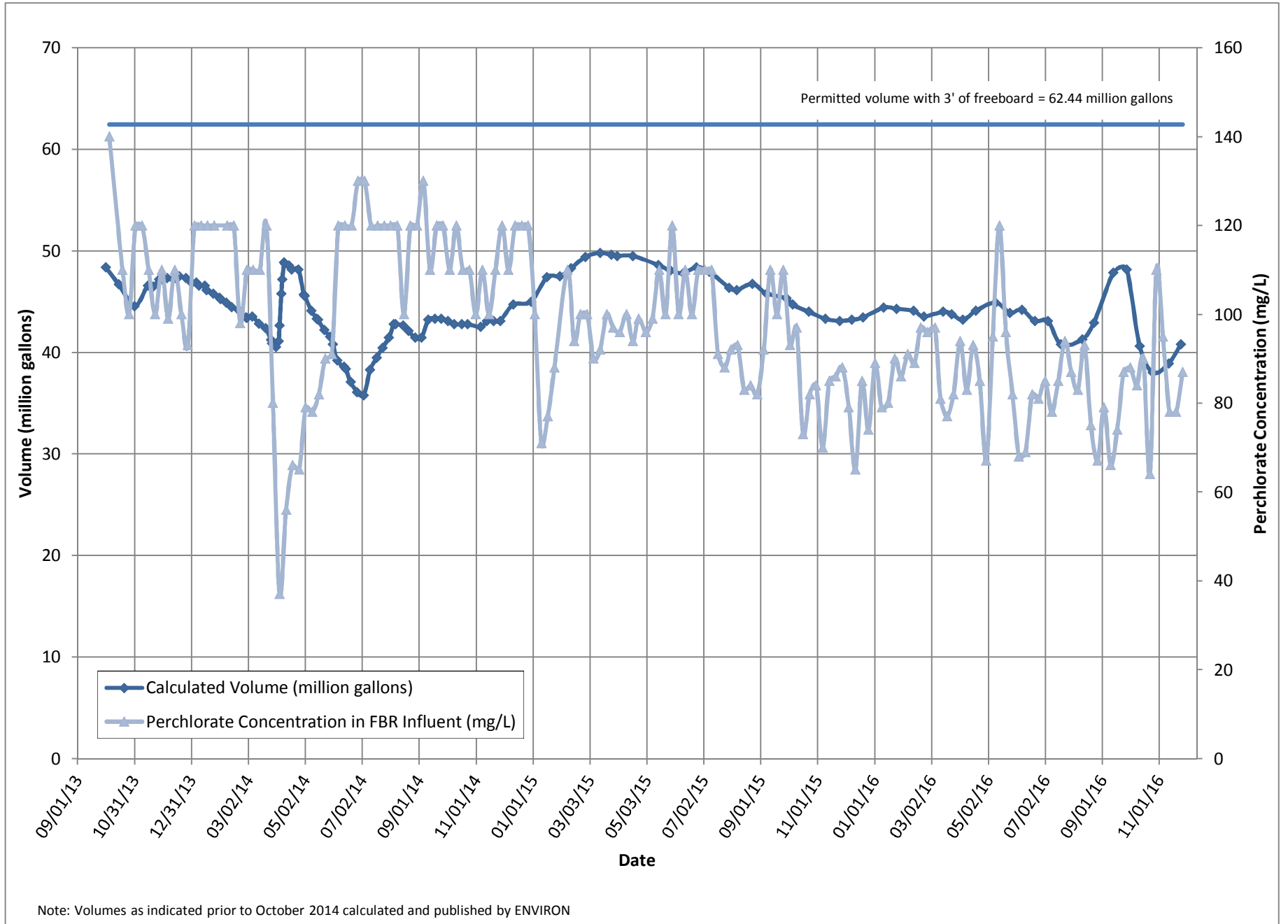
Nevada Environmental Response Trust Groundwater Extraction and Treatment System Enhanced Operational Metrics																
Date	E1-1				E1-2				E1-3				E2-1 ⁸			
	Flow ² (gpm)	Water Level (ft TOC)	Cr (VI) ^{4,5} (mg/L)	ClO ₄ ^{1,5} (mg/L)	Flow (gpm)	Water Level (ft TOC)	Cr (VI) ⁶ (mg/L)	ClO ₄ ^{1,6} (mg/L)	Flow (gpm)	Water Level (ft TOC)	Cr (VI) ⁷ (mg/L)	ClO ₄ ^{1,7} (mg/L)	Flow (gpm)	Water Level (ft TOC)	Cr (VI) ¹ (mg/L)	ClO ₄ ¹ (mg/L)
11/01/16	0.22				0.23				0.11				0			
11/02/16	0.22				0.23				0.11				0			
11/03/16	0.22				0.23				0.11				0			
11/04/16	0.22	28.10	0.024	1,400	0.23	36.16	0.033	2,700	0.11	31.15	0.073	2,400	0			
11/05/16	0.98				1.35				0.65				0			
11/06/16	0.98				1.35				0.65				0			
11/07/16	0.35				0.56				0.20				0			
11/08/16	0.35				0.56				0.20				0			
11/09/16	1.35	28.25			1.07	33.84			0.45	28.76			0			
11/10/16	1.31	28.21			1.02	34.55			0.41	26.83			0			
11/11/16	1.23	28.12			1.07	35.08			0	25.65			0			
11/12/16	0				0				0				0			
11/13/16	0				0				0				0			
11/14/16	0				0				0				0			
11/15/16	0	25.73			0	25.18			0	24.87			0			
11/16/16	0	25.61			0	25.06			0	24.78			0			
11/17/16	0.03	25.61	NS	NS	0.74	25.06	0.010	2,800	1.06	24.79	0.049	2,650	0			
11/18/16	0	25.78			0.83	29.46			1.15	37.87			0			
11/19/16	0				0.83				1.15				0			
11/20/16	0				0.83				1.15				0			
11/21/16	0	25.71			0.77	29.67			0.82	43.26			0			
11/22/16	2.43	25.70	0.024	1,650	0.89	29.94	0.022	2,800	1.04	35.05	0.081	2,500	0			
11/23/16	2.36	32.82			0.53	31.50			0.01	43.65			0			
11/24/16	2.36				0.53				0				0			
11/25/16	2.36				0.53				0				0			
11/26/16	2.36				0.53				0				0			
11/27/16	0				0				0				0			
11/28/16	0				0				0				0			
11/29/16	0				0				0				0			
11/30/16	0				0				0				0			
Monthly Average ³	0.64	27.24	0.024	1554	0.50	30.50	0.024	2754	0.31	31.51	0.067	2521	0			

Notes:
 Flow reported as gpm is a daily average calculated from the totalizer reading. *Italicized* flow rates indicate a totalizer reading was not recorded that day.
 NS = No Sample collected.
 1: Analytical results are reported from TestAmerica.
 2: All average concentrations reported are monthly flow weighted averages.
 3: Flow meter testing at well E1-1 on 11/18.
 4: TestAmerica indicated the 11/04 Cr (VI) sample for well E1-1 was prepared or analyzed beyond the specified holding time.
 5: Duplicates taken on 11/22 for well E1-1; average of both values is used for calculation purposes. Cr (VI) analytical results were 0.024 mg/L for both the sample and the duplicate. ClO₄ analytical results were 1,600 mg/L for the sample and 1,700 mg/L for the duplicate.
 6: Duplicates taken on 11/04 for well E1-2; average of both values is used for calculation purposes. Cr (VI) analytical results were 0.032 mg/L for the sample (prep or analytical time exceeded) and 0.034 mg/L for the duplicate. ClO₄ analytical results were 2,700 mg/L for both the sample and the duplicate.
 7: Duplicates taken on 11/17 for well E1-3; average of both values is used for calculation purposes. Cr (VI) analytical results were 0.057 mg/L for the sample and 0.041 mg/L for the duplicate. ClO₄ analytical results were 2,800 mg/L for the sample and 2,500 mg/L for the duplicate.
 8: No flushing and no pumping occurring at E2 plot from 11/01 to 11/30.

Nevada Environmental Response Trust Groundwater Extraction and Treatment System Enhanced Operational Metrics																
Date	E2-2 ⁸				E2-3 ⁸				E2-4 ⁸				E2-5 ⁸			
	Flow (gpm)	Water Level (ft TOC)	Cr (VI) ¹ (mg/L)	ClO ₄ ⁻¹ (mg/L)	Flow (gpm)	Water Level (ft TOC)	Cr (VI) ¹ (mg/L)	ClO ₄ ⁻¹ (mg/L)	Flow (gpm)	Water Level (ft TOC)	Cr (VI) ¹ (mg/L)	ClO ₄ ⁻¹ (mg/L)	Flow (gpm)	Water Level (ft TOC)	Cr (VI) ¹ (mg/L)	ClO ₄ ⁻¹ (mg/L)
11/01/16	0				0				0				0			
11/02/16	0				0				0				0			
11/03/16	0				0				0				0			
11/04/16	0				0				0				0			
11/05/16	0				0				0				0			
11/06/16	0				0				0				0			
11/07/16	0				0				0				0			
11/08/16	0				0				0				0			
11/09/16	0				0				0				0			
11/10/16	0				0				0				0			
11/11/16	0				0				0				0			
11/12/16	0				0				0				0			
11/13/16	0				0				0				0			
11/14/16	0				0				0				0			
11/15/16	0				0				0				0			
11/16/16	0				0				0				0			
11/17/16	0				0				0				0			
11/18/16	0				0				0				0			
11/19/16	0				0				0				0			
11/20/16	0				0				0				0			
11/21/16	0				0				0				0			
11/22/16	0				0				0				0			
11/23/16	0				0				0				0			
11/24/16	0				0				0				0			
11/25/16	0				0				0				0			
11/26/16	0				0				0				0			
11/27/16	0				0				0				0			
11/28/16	0				0				0				0			
11/29/16	0				0				0				0			
11/30/16	0				0				0				0			
Monthly Average ²	0				0				0				0			

Notes:
 Flow reported as gpm is a daily average calculated from the totalizer reading.
 1: Analytical results are reported from TestAmerica.
 2: All average concentrations reported are monthly flow weighted averages.
 8: No flushing and no pumping occurring at E2 plot from 11/01 to 11/30.

Figure 1 - GW-11 Pond Volume and Perchlorate Concentration



Note: Volumes as indicated prior to October 2014 calculated and published by ENVIRON

Figure 2 - FBR Equivalent Loading Calculation

