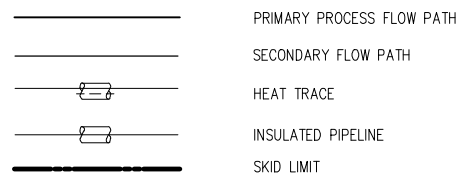
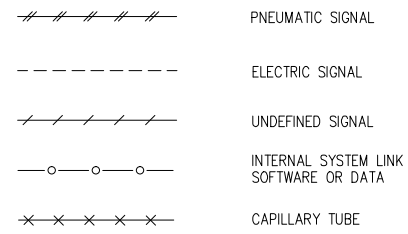


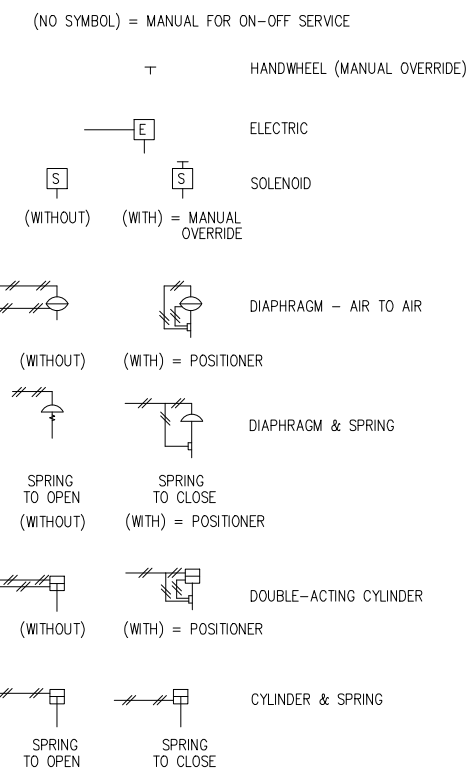
PIPING SYMBOLS



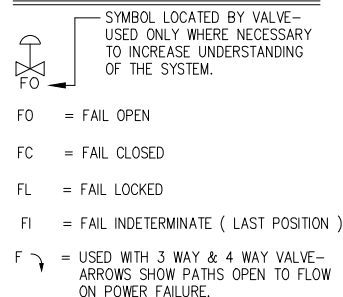
INSTRUMENT LINE SYMBOLS



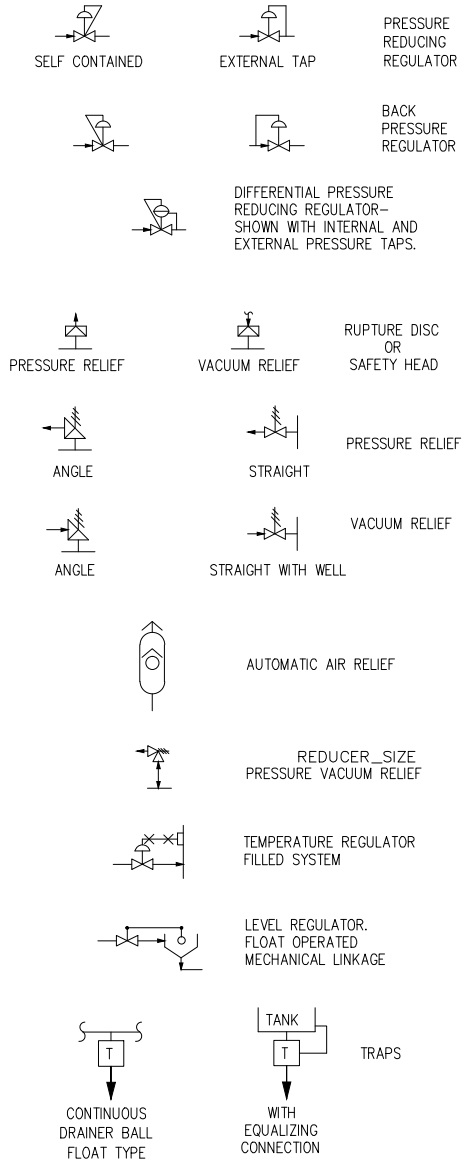
VALVE ACTUATOR SYMBOLS



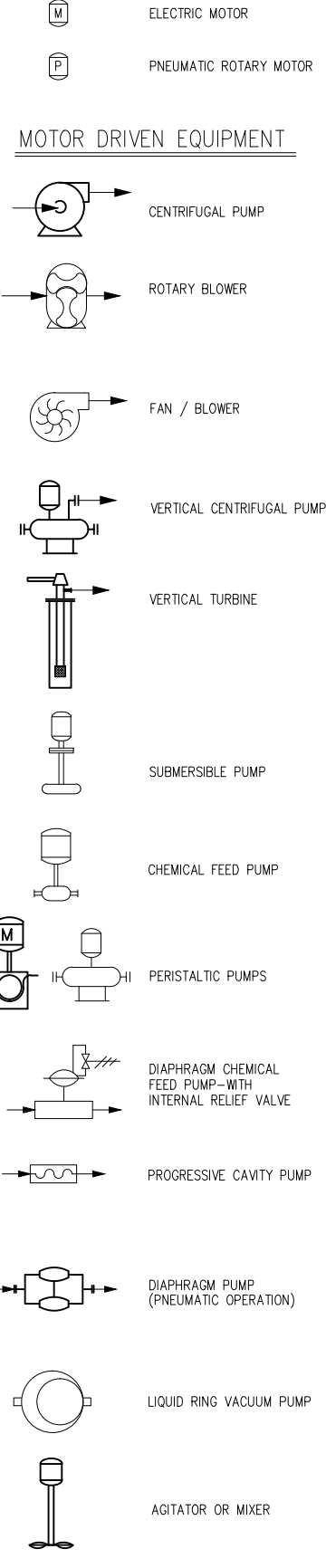
SYMBOLS FOR VALVE ACTION IN THE EVENT OF ACTUATOR POWER FAILURE.



SYMBOLS FOR SELF-ACTUATED REGULATORS



PRIME MOVERS FOR MOTOR DRIVEN EQUIPMENT

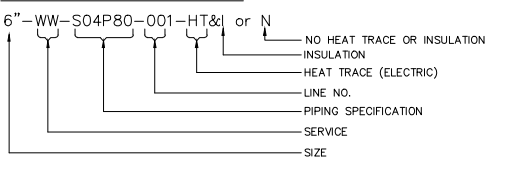


MOTOR DRIVEN EQUIPMENT

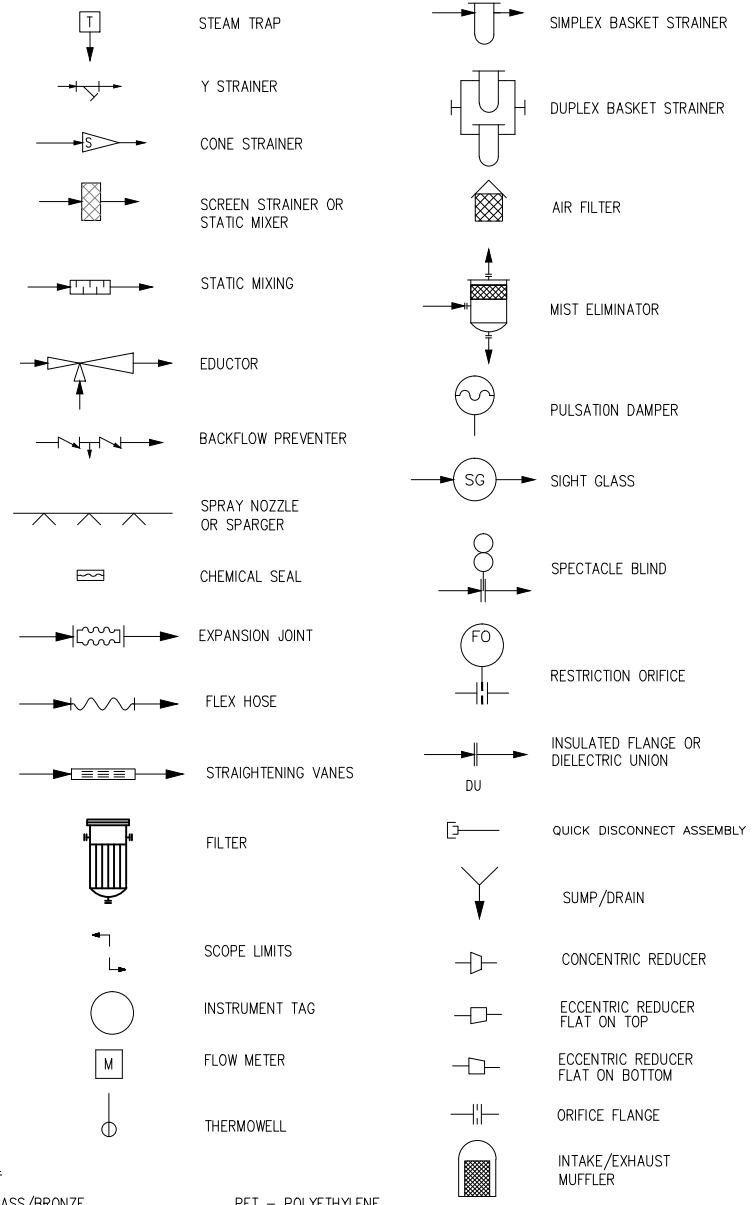
MATERIAL
BRZ - BRASS/BRONZE
CIR - CAST IRON
CST - CARBON STEEL
CPR - COPPER
FRP - FIBERGLASS
GCS - GALVANIZED CARBON STEEL
LCS - LINED CARBON STEEL
TEF - TEFLON
CVC - CHLORINATED POLYVINYL CHLORIDE
PET - POLYETHYLENE
POP - POLYPROPYLENE
PVC - POLYVINYL CHLORIDE
RUB - RUBBER
S04 - 304 STAINLESS STEEL
S4L - 304L STAINLESS STEEL
S16 - 316 STAINLESS STEEL
S6L - 316L STAINLESS STEEL
VT - VITON

TYPE
D = DUCT P = PIPE
H = HOSE T = TUBE

PIPE LINE DESIGNATION



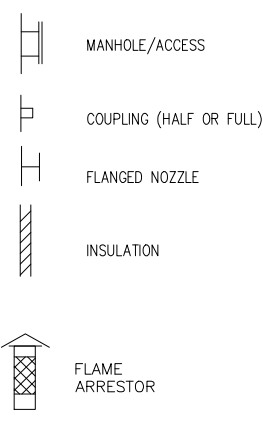
PIPING ACCESSORIES AND DETAILS



VALVE SYMBOLS



TANK ACCESSORIES



GENERAL NOTES:

1. FOR INSTRUMENTATION SYMBOLS, AND LIST OF RELAY FUNCTIONS. SEE SHEET 2, DRAWING 1373-PID-LB.
THIS DRAWING IS PROVIDED FOR INFORMATION ONLY.

DRAWING SCALE		N/A	
DESIGNED BY/DATE		DL MD	
DRAWN BY/DATE		DL DW	
REV	DATE	DESCRIPTION OF REVISION	REVISION BY
THIS IS A COMPUTER GENERATED DRAWING AND ONLY EDITS CONSISTENT WITH ENVIROGEN'S ORIGINAL CAD FORMAT SHALL BE CONSIDERED VALID COPIES.			
CHECKED BY/DATE		DW	

ENVIROGEN TECHNOLOGIES
84A TWIN RIVERS DRIVE
EAST WINDSOR, NJ 08520

A Lifecycle Performance Company

ALL INFORMATION CONTAINED ON THIS DOCUMENT IS THE PROPERTY OF ENVIROGEN TECHNOLOGIES, INC. ("ENVIROGEN") AND/OR ITS AFFILIATES. THE DESIGN CONCEPTS AND INFORMATION CONTAINED HEREIN ARE PROPERTY OF ENVIROGEN AND ARE SUBMITTED IN CONFIDENCE. THEY ARE NOT TRANSFERABLE AND MUST BE USED ONLY FOR THE USE AND PROJECT FOR WHICH THE DOCUMENT IS EXPRESSLY SUBMITTED. THEY MUST NOT BE DISCLOSED, REPRODUCED, LOANED OR USED IN ANY OTHER MANNER WITHOUT THE EXPRESS WRITTEN CONSENT OF ENVIROGEN. ENVIROGEN ASSUMES NO RESPONSIBILITY OR LIABILITY FOR THE USE OF THIS DOCUMENT OR THE DESIGN CONCEPTS AND INFORMATION CONTAINED HEREIN FOR ANOTHER PROJECT, OR IN A MANNER THAT DOES NOT RELATE TO THE ORIGINALLY INTENDED USE OF THIS DOCUMENT. IN NO EVENT SHALL THIS DOCUMENT OR THE DESIGN CONCEPTS AND INFORMATION CONTAINED HEREIN BE USED IN ANY MANNER DETRIMENTAL TO THE INTEREST OF ENVIROGEN. THE RIGHTS AND OBLIGATIONS OF ENVIROGEN AND ITS CUSTOMER ARE FURTHER LIMITED IN THE AGREEMENT BETWEEN THEM FOR THIS PROJECT. ALL PATENT AND OTHER RIGHTS ARE RESERVED. ACCEPTANCE OF THE DELIVERY OF THIS DOCUMENT CONSTITUTES AGREEMENT TO THESE TERMS AND CONDITIONS.

APPROVED BY:

NERT
HENDERSON, NV

PIPING & INSTRUMENTATION DIAGRAM LEGEND SHEET

SHEET 1

SHEET SIZE: D 0
REVISION: 0

SHEET 1 OF 1
DRAWING # 1373-PID-LA
FILE # 1373-PID-LA-0

LAST EDITED: 8/18/16 BY: gmoor NETWORK PATH: G:\ENVIROGEN\1373-101 TROBOX SERVICE\A.0 SUB PROJECTS\1373-101 LS-1 IMPROVEMENTS\A.0 DRAWINGS\PIPLS-1 IMPROVEMENTS 2016\16 REV-0 SET