

Table 1 - Seep Well Field (SWF) Operational Metrics

Nevada Environmental Response Trust Groundwater Extraction and Treatment System Enhanced Operational Metrics																											
Date	LS #1 Flow ² (gpm)	East Well (PC-116R)		Center Well (PC99R3)		West Well (PC-115R)		PC 117		PC 118		PC 119		PC 120		PC 121		PC 133									
		Flow (gpm)	Water Elevation (ft amsl)	Flow (gpm)	Water Elevation (ft amsl)	Flow (gpm)	Water Elevation (ft amsl)	Flow (gpm)	Water Elevation (ft amsl)	Flow (gpm)	Water Elevation (ft amsl)	Flow (gpm)	Water Elevation (ft amsl)	Flow (gpm)	Water Elevation (ft amsl)	Flow (gpm)	Water Elevation (ft amsl)	Flow (gpm)	Water Elevation (ft amsl)								
04/01/16	486	117	1537.9	58	1540.7	117	1543.2	118	1537.8	58	1546.3	58	1547.7	0	1549.8	0	1549.5	13	1520.0								
04/02/16	468	117	1537.9	58	1541.0	117	1543.2	117	1537.8	58	1546.3	59	1547.7	0	1549.8	0	1549.6	10	1520.0								
04/03/16	485	118	1538.0	59	1540.7	118	1543.2	117	1537.8	59	1546.3	58	1547.8	0	1549.8	0	1549.6	10	1520.0								
04/04/16	468	117	1538.0	59	1540.4	117	1543.3	117	1537.8	59	1546.4	59	1547.8	0	1549.9	1	1549.7	9	1520.0								
04/05/16	485	117	1538.0	59	1540.9	117	1543.3	117	1537.8	59	1546.4	59	1547.9	0	1549.9	0	1549.7	9	1520.0								
04/06/16	469	118	1538.1	58	1540.6	118	1543.4	117	1537.9	58	1546.5	58	1547.9	0	1550.0	0	1549.7	8	1520.0								
04/07/16	472	117	1538.1	58	1540.8	117	1543.4	117	1537.9	58	1546.5	59	1547.9	0	1550.0	0	1549.8	8	1520.0								
04/08/16	470	117	1538.2	59	1540.5	117	1543.5	118	1537.9	59	1546.5	58	1548.0	0	1550.1	0	1549.8	8	1520.0								
04/09/16	469	117	1538.2	58	1541.0	117	1543.5	117	1538.0	63	1546.6	59	1548.0	0	1550.1	0	1549.9	9	1520.0								
04/10/16	428	103	1538.5	52	1541.3	103	1543.7	102	1538.2	47	1546.8	51	1548.2	0	1550.3	0	1550.1	10	1520.0								
04/11/16	485	117	1538.9	59	1540.9	117	1544.0	117	1538.5	59	1547.1	59	1548.5	0	1550.5	0	1550.3	8	1520.0								
04/12/16	470	117	1539.0	59	1541.2	118	1544.0	117	1538.5	59	1547.1	59	1548.6	0	1550.6	0	1550.4	7	1520.0								
04/13/16	477	117	1539.0	59	1541.1	117	1544.1	117	1538.6	59	1547.2	59	1548.7	0	1550.7	0	1550.5	9	1520.0								
04/14/16	469	118	1539.1	58	1541.0	117	1544.1	118	1538.6	58	1547.2	58	1548.7	0	1550.8	0	1550.5	9	1520.0								
04/15/16	469	117	1539.1	59	1541.3	117	1544.1	117	1538.6	59	1547.2	59	1548.7	0	1550.8	0	1550.5	8	1520.0								
04/16/16	469	118	1539.1	58	1541.1	117	1544.2	117	1538.6	58	1547.2	58	1548.8	0	1550.8	0	1550.6	8	1520.0								
04/17/16	469	117	1539.1	59	1541.0	117	1544.2	117	1538.6	59	1547.3	59	1548.8	0	1550.8	0	1550.6	8	1520.0								
04/18/16	469	117	1539.1	58	1540.9	117	1544.2	117	1538.6	58	1547.3	59	1548.8	0	1550.8	0	1550.6	8	1520.0								
04/19/16	469	117	1539.1	59	1540.8	117	1544.2	117	1538.6	59	1547.3	58	1548.8	0	1550.8	0	1550.6	8	1520.0								
04/20/16	468	117	1539.1	59	1540.9	117	1544.2	117	1538.6	59	1547.3	59	1548.8	0	1550.8	0	1550.6	8	1520.0								
04/21/16	469	118	1539.1	58	1540.7	117	1544.1	118	1538.6	59	1547.2	59	1548.8	0	1550.8	0	1550.6	7	1520.0								
04/22/16	606	117	1539.1	58	1541.1	117	1544.1	117	1538.6	58	1547.2	58	1548.7	0	1550.8	0	1550.6	7	1520.0								
04/23/16	536	117	1539.0	59	1540.9	117	1544.1	117	1538.5	59	1547.2	59	1548.7	0	1550.7	0	1550.5	8	1520.0								
04/24/16	536	117	1539.0	59	1540.7	118	1544.1	117	1538.5	58	1547.2	58	1548.7	0	1550.7	0	1550.5	9	1520.0								
04/25/16	538	118	1539.0	58	1540.7	117	1544.1	118	1538.5	58	1547.2	58	1548.7	0	1550.7	0	1550.5	11	1520.0								
04/26/16	539	117	1539.0	58	1540.9	117	1544.1	117	1538.5	59	1547.2	59	1548.7	0	1550.7	0	1550.5	12	1520.0								
04/27/16	542	117	1539.0	59	1540.8	117	1544.1	117	1538.5	58	1547.2	59	1548.7	0	1550.7	0	1550.5	15	1520.0								
04/28/16	538	117	1539.0	58	1541.0	117	1544.0	118	1538.5	58	1547.1	58	1548.7	0	1550.7	0	1550.5	11	1520.0								
04/29/16	536	118	1539.0	58	1541.0	117	1544.0	117	1538.5	59	1547.2	58	1548.7	0	1550.7	0	1550.5	9	1520.0								
04/30/16	536	117	1539.0	59	1540.9	117	1544.1	117	1538.5	58	1547.2	58	1548.7	0	1550.7	0	1550.5	9	1520.0								
Monthly Average	493	117	1538.7	58	1540.9	117	1543.9	117	1538.3	58	1547.0	58	1548.4	0	1550.5	0	1550.3	9	1520.0								
Analytical ¹	Conc (mg/L)		Date	Conc (mg/L)		Date	Conc (mg/L)		Date	Conc (mg/L)		Date	Conc (mg/L)		Date	Conc (mg/L)		Date	Conc (mg/L)		Date						
Perchlorate	13		4/4/2016	16		4/4/2016	12		4/4/2016	6.0		4/4/2016	3.7		4/4/2016	0.45		4/4/2016	0.0066		4/4/2016	0.0042		4/4/2016	1.2		4/4/2016
Hexavalent Chromium	ND		4/4/2016	ND		4/4/2016	ND		4/4/2016	ND		4/4/2016	ND		4/4/2016	ND		4/4/2016	ND		4/4/2016	ND		4/4/2016	ND		4/4/2016
Total Chromium	ND		4/4/2016	ND		4/4/2016	ND		4/4/2016	ND		4/4/2016	ND		4/4/2016	ND		4/4/2016	ND		4/4/2016	ND		4/4/2016	ND		4/4/2016

Notes:

Flow reported as gpm is a daily average calculated from the totalizer reading.

NA= Not Available; ND = Not detected above laboratory method detection limit (ClO₄ = 0.5 ug/L; ClO₃ = 10 ug/L; NO₃-N= 0.055 mg/L, CR(VI) = 0.25 ug/L).

1: Analytical results are reported from TestAmerica.

2: Flows for LS #1 estimated using SWF combined daily flow total due to communication issues with the totalizer from 04/23 - 04/30.

Nevada Environmental Response Trust Groundwater Extraction and Treatment System Enhanced Operational Metrics																				
Date	LS #3 Flow (gpm)	ART 1A/1B		ART 2A/2B		ART 3A/3B		ART 4A/4B		ART 6/9		ART 7A/7B		ART 8A/8B		PC-150				
		Flow (gpm)	Water Elevation (ft amsl)	Flow (gpm)	Water Elevation (ft amsl)	Flow (gpm)	Water Elevation (ft amsl)	Flow ⁵ (gpm)	Water Elevation (ft amsl)	Flow ³ (gpm)	Water Elevation (ft amsl)	Flow ⁴ (gpm)	Water Elevation (ft amsl)	Flow (gpm)	Water Elevation (ft amsl)	Flow (gpm)	Water Elevation (ft amsl)			
04/01/16	234	0	1591.1	58	1590.3	58	1587.2	8	1575.0	58	1576.6	14	1578.0	58	1586.5	3	1583.9			
04/02/16	235	0	1591.1	59	1590.3	59	1587.2	7	1575.0	59	1576.6	15	1578.0	59	1586.5	3	1584.0			
04/03/16	234	0	1591.1	58	1590.3	58	1587.2	8	1575.0	58	1576.6	15	1578.0	59	1586.5	3	1584.7			
04/04/16	234	0	1591.1	59	1590.3	59	1587.2	7	1575.0	59	1576.6	15	1578.0	58	1586.5	3	1584.9			
04/05/16	234	0	1591.1	59	1590.3	59	1587.2	8	1575.0	59	1576.6	14	1578.0	59	1586.5	3	1584.5			
04/06/16	234	0	1591.1	58	1590.3	58	1587.2	8	1575.0	58	1576.6	15	1578.0	59	1586.5	3	1584.8			
04/07/16	233	0	1591.1	59	1590.3	58	1587.2	7	1575.0	59	1576.6	15	1578.0	58	1586.5	3	1584.2			
04/08/16	234	0	1591.1	58	1590.3	59	1587.1	7	1575.0	58	1576.6	15	1578.0	58	1586.5	3	1585.1			
04/09/16	230	0	1591.1	59	1590.3	58	1587.2	12	1575.0	50	1576.6	15	1578.0	59	1586.5	3	1583.8			
04/10/16	201	0	1591.1	52	1590.3	52	1587.2	26	1575.0	11	1576.5	17	1578.0	52	1586.5	3	1584.8			
04/11/16	233	0	1591.2	59	1590.5	59	1587.3	24	1575.0	37	1576.6	19	1587.8	59	1586.6	3	1584.2			
04/12/16	234	0	1591.2	58	1590.5	59	1587.3	22	1575.0	58	1575.0	15	1578.0	59	1586.6	3	1584.8			
04/13/16	233	0	1591.3	59	1590.5	59	1587.3	22	1575.0	59	1575.0	15	1578.0	59	1586.6	3	1585.0			
04/14/16	234	0	1591.3	59	1590.5	58	1587.3	16	1575.0	58	1575.0	15	1578.0	58	1586.7	3	1584.3			
04/15/16	235	0	1591.3	59	1590.5	59	1587.3	15	1575.0	59	1576.6	15	1578.0	59	1586.7	3	1584.6			
04/16/16	234	0	1591.3	58	1590.5	58	1587.3	15	1575.0	58	1576.6	15	1578.0	58	1586.7	3	1583.9			
04/17/16	234	0	1591.3	59	1590.5	59	1587.3	14	1575.0	59	1576.6	15	1578.0	59	1586.7	3	1584.4			
04/18/16	234	0	1591.3	58	1590.5	59	1587.3	15	1575.0	58	1576.6	15	1578.0	58	1586.7	3	1584.1			
04/19/16	234	0	1591.3	58	1590.5	58	1587.3	15	1575.0	59	1576.5	15	1578.0	59	1586.7	3	1584.9			
04/20/16	234	0	1591.3	59	1590.6	59	1587.4	18	1575.0	58	1576.5	15	1578.0	59	1586.7	3	1584.1			
04/21/16	235	0	1591.3	59	1590.6	59	1587.4	16	1575.0	59	1576.6	15	1578.0	58	1586.7	3	1584.7			
04/22/16	234	0	1591.4	58	1590.6	58	1587.4	7	1575.0	58	1576.6	15	1578.0	58	1586.8	4	1584.5			
04/23/16	235	0	1591.4	59	1590.6	59	1587.4	8	1575.0	59	1576.6	19	1578.0	59	1586.8	3	1584.6			
04/24/16	234	0	1591.4	58	1590.6	58	1587.4	8	1575.0	58	1576.6	29	1578.0	59	1586.8	3	1584.8			
04/25/16	234	0	1591.4	59	1590.6	58	1587.4	7	1575.0	59	1576.6	29	1578.0	58	1586.8	3	1585.1			
04/26/16	235	0	1591.4	58	1590.6	59	1587.4	8	1575.0	58	1576.6	29	1578.0	58	1586.8	3	1584.5			
04/27/16	234	0	1591.4	59	1590.6	59	1587.4	7	1575.0	59	1576.6	29	1578.0	59	1586.8	3	1585.1			
04/28/16	232	0	1591.4	58	1590.6	58	1587.4	8	1575.0	58	1576.6	29	1578.0	58	1586.8	3	1584.1			
04/29/16	234	0	1591.4	58	1590.7	58	1587.4	7	1575.0	58	1576.6	30	1578.0	58	1586.8	3	1585.1			
04/30/16	235	0	1591.4	59	1590.7	58	1587.5	8	1575.0	59	1576.6	29	1578.0	59	1586.8	3	1584.5			
Monthly Average	233	0	1591.3	58	1590.5	58	1587.3	12	1575.0	56	1576.4	18	1578.3	58	1586.7	3	1584.5			
Analytical ¹	Conc (mg/L)		Date		Conc (mg/L)		Date		Conc (mg/L)		Date		Conc (mg/L)		Date		Conc (mg/L)		Date	
Perchlorate	23		4/4/2016		26		4/4/2016		200		4/4/2016		270		4/4/2016		240		4/4/2016	
Hexavalent Chromium	0.0030		4/4/2016		ND		4/4/2016		0.26		4/4/2016		0.65		4/4/2016		0.94		4/4/2016	
Total Chromium	0.0053		4/4/2016		0.0098		4/4/2016		0.29		4/4/2016		0.48		4/4/2016		0.87		4/4/2016	

Notes:
 Flow reported as gpm is a daily average calculated from the totalizer reading. NA = Not Available.
 1: Analytical results are reported from TestAmerica.
 2: Concentrations reported for ART-9.
 3: ART 9 pump offline due to electrical issues from 1:40 PM on 04/10/2016 to 2:40 PM on 04/11/2016.
 4: ART-7B flow increased at the direction of the Trust on 04/24/2016.
 5: Pumping switched to ART-4A on 04/09 while ART-4B pump was pulled for electrical maintenance. ART-4B came back online on 04/22.

Table 3 - Interceptor Well Field (IWF) Operational Metrics

Nevada Environmental Response Trust Groundwater Extraction and Treatment System Enhanced Operational Metrics																				
Date	I-AR		I-AA		I-AB		I-AC		I-AD		I-B		I-C		I-D		I-E		I-F	
	Flow (gpm)	Water Elevation (ft amsl)	Flow ² (gpm)	Water Elevation (ft amsl)	Flow (gpm)	Water Elevation (ft amsl)	Flow (gpm)	Water Elevation (ft amsl)	Flow (gpm)	Water Elevation (ft amsl)	Flow (gpm)	Water Elevation (ft amsl)	Flow ³ (gpm)	Water Elevation (ft amsl)	Flow (gpm)	Water Elevation (ft amsl)	Flow ² (gpm)	Water Elevation (ft amsl)	Flow (gpm)	Water Elevation (ft amsl)
04/01/16	0.11	1727.9	0.47	1719.0	0.00	1722.0	0.00	1723.3	0.00	1724.9	1.00	1709.7	1.87	1723.9	4.69	1722.8	0.47	1717.4	3.75	1721.1
04/02/16	0.36	1727.9	0.47	1718.9	0.00	1722.0	0.00	1723.3	0.00	1724.9	0.99	1709.3	1.88	1723.8	4.69	1722.7	0.47	1717.4	3.75	1721.1
04/03/16	0.23	1727.9	0.47	1718.9	0.00	1722.0	0.00	1723.3	0.00	1724.9	0.98	1709.7	1.87	1723.8	5.08	1722.6	0.47	1717.4	3.75	1721.1
04/04/16	0.25	1728.0	0.47	1719.0	0.00	1722.0	0.00	1723.3	0.00	1724.9	0.99	1709.5	1.87	1723.7	5.37	1722.6	0.45	1717.4	3.57	1721.1
04/05/16	0.24	1728.0	0.47	1721.2	0.18	1722.0	0.00	1723.3	0.00	1724.9	0.98	1709.4	1.87	1724.4	5.63	1722.6	0.47	1717.5	3.75	1721.2
04/06/16	0.34	1727.9	0.41	1721.1	0.18	1722.0	0.00	1723.3	0.00	1724.9	0.97	1709.4	1.87	1724.2	5.63	1722.3	0.47	1717.5	3.75	1721.2
04/07/16	0.47	1727.8	0.47	1721.0	0.18	1722.0	0.00	1723.3	0.00	1724.9	0.95	1709.5	1.88	1724.2	7.32	1722.3	0.47	1717.6	3.75	1721.3
04/08/16	0.47	1727.9	0.39	1720.9	0.18	1721.9	0.00	1723.3	0.01	1724.9	0.72	1709.4	1.88	1724.1	7.50	1721.8	0.47	1717.6	3.75	1721.3
04/09/16	0.47	1727.7	0.42	1720.3	0.19	1721.7	0.00	1723.3	0.00	1724.9	1.20	1709.6	1.88	1723.6	7.50	1713.6	0.47	1717.5	3.75	1721.2
04/10/16	0.47	1727.7	0.44	1720.3	0.16	1721.7	0.00	1723.3	0.00	1724.9	0.69	1709.6	1.88	1723.6	7.50	1719.7	0.47	1717.5	3.75	1721.3
04/11/16	0.47	1727.7	0.44	1720.3	0.18	1721.7	0.00	1723.3	0.00	1724.9	0.88	1709.6	1.88	1723.6	7.50	1713.6	0.47	1717.5	3.75	1721.2
04/12/16	0.47	1727.5	0.89	1720.2	0.18	1721.6	0.00	1723.3	0.00	1724.9	0.89	1709.4	1.78	1723.6	7.50	1706.1	0.91	1717.5	3.75	1721.2
04/13/16	0.47	1727.4	1.13	1717.4	0.18	1721.5	0.00	1723.3	0.00	1724.9	0.89	1709.5	3.37	1722.4	7.50	1706.1	1.66	1717.3	3.75	1721.1
04/14/16	0.47	1727.5	1.16	1708.0	0.18	1721.3	0.00	1723.3	0.00	1725.0	0.90	1709.3	3.75	1719.8	7.42	1706.1	1.60	1717.2	3.75	1721.0
04/15/16	0.47	1727.5	1.14	1708.0	0.18	1721.2	0.00	1723.4	0.00	1725.0	0.89	1709.3	2.83	1719.6	6.20	1706.1	1.41	1717.2	3.75	1720.9
04/16/16	0.47	1727.4	1.14	1708.0	0.18	1721.2	0.00	1723.3	0.00	1725.0	0.88	1709.4	1.87	1719.9	7.84	1706.1	1.41	1717.1	3.75	1720.8
04/17/16	0.47	1727.5	1.15	1708.0	0.18	1721.1	0.00	1723.3	0.00	1724.9	0.90	1709.5	1.88	1719.9	3.50	1706.1	1.41	1717.0	3.75	1720.8
04/18/16	0.47	1727.5	1.16	1708.0	0.18	1721.1	0.00	1723.3	0.00	1724.9	0.90	1709.3	3.49	1719.8	5.42	1706.1	1.82	1717.0	3.75	1720.8
04/19/16	0.47	1727.5	0.99	1708.0	0.18	1721.1	0.00	1723.3	0.00	1725.0	0.86	1709.4	3.75	1715.4	5.18	1706.1	1.87	1716.9	3.75	1720.6
04/20/16	0.47	1727.5	0.94	1708.0	0.18	1721.1	0.00	1723.3	0.00	1725.0	0.87	1709.5	3.75	1715.1	4.98	1706.8	1.83	1716.8	3.75	1720.5
04/21/16	0.47	1727.5	0.94	1708.0	0.18	1721.0	0.00	1723.4	0.00	1725.0	0.83	1709.4	3.75	1715.3	4.82	1706.8	1.75	1716.8	3.75	1720.5
04/22/16	0.47	1727.5	0.94	1708.0	0.18	1721.0	0.00	1723.4	0.00	1725.0	0.89	1709.3	3.75	1715.2	4.68	1706.1	1.88	1716.7	3.75	1720.4
04/23/16	0.47	1727.5	0.94	1708.0	0.18	1721.0	0.00	1723.4	0.00	1725.0	0.90	1709.4	3.75	1715.7	4.54	1706.2	1.88	1716.6	3.75	1720.3
04/24/16	0.47	1727.5	0.94	1708.0	0.18	1721.0	0.00	1723.4	0.00	1725.0	0.90	1709.3	3.75	1715.7	4.46	1706.3	1.88	1716.6	3.75	1720.3
04/25/16	0.47	1727.5	0.94	1708.0	0.18	1721.0	0.00	1723.4	0.00	1725.0	0.90	1709.4	3.74	1715.9	4.34	1706.3	1.87	1716.6	3.74	1720.3
04/26/16	0.47	1727.5	0.94	1708.0	0.18	1721.0	0.00	1723.4	0.00	1725.0	0.89	1709.3	3.76	1715.9	4.27	1706.7	1.88	1716.6	3.76	1720.3
04/27/16	0.47	1727.5	0.94	1708.0	0.18	1721.0	0.00	1723.4	0.00	1725.0	0.88	1709.4	3.75	1716.0	4.21	1707.0	1.88	1716.5	3.75	1720.3
04/28/16	0.47	1727.5	0.94	1708.0	0.18	1721.0	0.00	1723.4	0.00	1725.0	0.87	1709.4	3.75	1716.2	4.09	1707.3	1.88	1716.5	3.75	1720.2
04/29/16 ⁴	0.47	1727.6	0.69	1708.0	0.13	1721.0	0.00	1723.4	0.00	1725.0	0.56	1709.5	0.49	1711.6	3.63	1706.5	1.29	1716.4	2.50	1720.1
04/30/16	0.47	1729.2	0.96	1708.0	0.18	1721.4	0.00	1723.4	0.00	1725.0	0.67	1709.7	0.54	1721.9	4.88	1706.3	1.88	1716.9	3.75	1720.6
Monthly Average	0.43	1727.7	0.79	1713.2	0.15	1721.4	0.00	1723.3	0.00	1725.0	0.89	1709.4	2.60	1719.9	5.60	1711.6	1.24	1717.1	3.70	1720.8
Analytical ¹	Conc (mg/L)	Date	Conc (mg/L)	Date	Conc ² (mg/L)	Date	Conc (mg/L)	Date	Conc (mg/L)	Date	Conc (mg/L)	Date	Conc (mg/L)	Date	Conc (mg/L)	Date	Conc (mg/L)	Date	Conc (mg/L)	Date
Perchlorate	1300	4/8/2016	99	4/8/2016	90	3/11/2016	120	4/8/2016	120	4/8/2016	500	4/8/2016	560	4/5/2016	730	4/5/2016	560	4/5/2016	850	4/5/2016
Hexavalent Chromium	0.0210	4/8/2016	0.0350	4/8/2016	0.0440	3/11/2016	0.272	4/8/2016	0.0170	4/8/2016	0.126	4/8/2016	3.49	4/5/2016	5.18	4/5/2016	7.56	4/5/2016	14.4	4/5/2016
Total Chromium	0.070	4/8/2016	0.048	4/8/2016	0.051	3/11/2016	0.41	4/8/2016	0.42	4/8/2016	0.15	4/8/2016	2.4	4/5/2016	4.8	4/5/2016	6.2	4/5/2016	14	4/5/2016

Notes:
 Flow reported as gpm is a daily average calculated from the totalizer reading. NA=Not Available.
 1: Analytical results are reported from TestAmerica.
 2: Flow increased at the direction of the Trust on 04/12/2016.
 3: Flow increased at the direction of the Trust on 04/13/2016.
 4: I well field offline at 6:54 AM for GWTP upgrade; back online at 2:14 PM.
 5: Not enough water to collect sample at I-AB. Results from March 2015 are presented for calculation purposes.

Nevada Environmental Response Trust Groundwater Extraction and Treatment System Enhanced Operational Metrics																				
Date	I-G		I-H		I-I		I-J		I-K		I-L		I-M		I-N		I-O		I-P	
	Flow (gpm)	Water Elevation (ft amsl)	Flow (gpm)	Water Elevation (ft amsl)	Flow (gpm)	Water Elevation (ft amsl)	Flow (gpm)	Water Elevation (ft amsl)	Flow (gpm)	Water Elevation (ft amsl)	Flow* (gpm)	Water Elevation (ft amsl)	Flow (gpm)	Water Elevation (ft amsl)	Flow (gpm)	Water Elevation (ft amsl)	Flow ³ (gpm)	Water Elevation (ft amsl)	Flow (gpm)	Water Elevation (ft amsl)
04/01/16	0.23	1711.0	0.94	1714.2	3.75	1720.9	7.50	1707.0	3.75	1714.7	0.94	1722.8	1.87	1722.3	3.75	1725.6	0.47	1720.9	1.87	1709.6
04/02/16	0.23	1711.0	0.94	1714.0	3.75	1720.9	7.50	1707.0	3.75	1714.8	0.94	1722.7	1.88	1722.2	3.75	1725.5	0.47	1720.9	1.88	1709.6
04/03/16	0.23	1711.0	0.94	1714.3	3.75	1720.9	7.50	1707.0	3.75	1714.8	0.94	1722.7	1.87	1722.2	3.75	1725.5	0.47	1720.9	1.87	1709.6
04/04/16	0.23	1711.0	0.90	1714.6	3.60	1721.0	7.50	1707.0	3.58	1714.8	0.96	1722.7	1.79	1722.1	3.58	1725.5	0.45	1721.0	1.81	1709.6
04/05/16	0.23	1711.0	0.94	1716.7	3.75	1721.1	7.50	1707.0	3.75	1715.0	2.04	1723.0	1.88	1722.2	3.75	1726.0	0.47	1721.1	1.88	1709.6
04/06/16	0.23	1711.4	0.94	1714.8	3.75	1721.0	7.50	1707.0	3.75	1714.9	1.88	1720.5	1.87	1722.1	3.75	1725.9	0.47	1721.1	1.88	1709.6
04/07/16	0.23	1711.1	0.94	1715.6	3.75	1721.0	7.50	1707.0	3.75	1715.0	2.74	1720.4	1.88	1722.1	3.75	1726.0	0.47	1721.1	1.88	1709.6
04/08/16	0.23	1711.0	0.94	1715.6	3.75	1721.0	7.50	1707.0	3.75	1714.9	2.14	1711.3	1.88	1722.0	3.75	1725.9	0.47	1721.1	1.88	1709.6
04/09/16	0.24	1711.0	0.94	1717.7	3.75	1721.0	7.50	1707.0	3.75	1715.0	2.30	1711.3	1.87	1721.7	3.75	1725.7	0.27	1721.1	1.89	1709.6
04/10/16	0.24	1711.0	0.94	1715.9	3.75	1721.1	7.50	1707.0	3.75	1715.0	1.46	1711.3	1.87	1721.8	3.75	1725.7	0.66	1721.1	1.90	1709.6
04/11/16	0.24	1711.0	0.94	1717.7	3.75	1721.0	7.50	1707.0	3.75	1715.0	1.88	1711.3	1.88	1721.7	3.75	1725.7	0.47	1721.1	1.89	1709.6
04/12/16	0.24	1711.0	0.94	1717.7	3.75	1721.0	7.50	1707.0	3.75	1715.0	1.87	1711.4	1.88	1721.6	3.75	1725.6	0.53	1721.1	1.89	1709.6
04/13/16	0.24	1711.0	0.94	1717.8	3.75	1721.0	7.50	1707.0	3.75	1715.0	1.87	1711.4	1.87	1721.6	3.75	1723.7	1.23	1721.0	1.88	1709.6
04/14/16	0.24	1711.0	0.94	1717.7	3.75	1721.0	7.50	1707.0	3.75	1715.1	1.88	1711.4	1.88	1721.5	3.75	1718.6	1.41	1720.3	1.88	1709.6
04/15/16	0.25	1711.0	0.94	1717.5	3.75	1721.0	7.50	1707.0	3.75	1715.1	1.88	1711.4	1.88	1721.4	3.75	1718.9	1.21	1720.4	1.88	1709.6
04/16/16	0.24	1711.0	0.94	1717.1	3.75	1721.0	7.50	1707.0	3.75	1715.0	1.87	1711.4	1.87	1721.4	3.75	1718.9	0.94	1720.5	1.87	1709.6
04/17/16	0.22	1711.1	0.94	1716.9	3.75	1721.0	7.50	1707.0	3.75	1715.0	1.87	1711.3	1.88	1721.3	3.75	1718.9	0.94	1720.5	1.88	1709.6
04/18/16	0.22	1711.0	0.94	1717.2	3.75	1721.0	7.50	1707.0	3.75	1715.0	1.88	1711.4	1.88	1721.3	3.75	1719.1	1.35	1720.5	1.88	1709.6
04/19/16	0.22	1711.1	0.94	1717.1	3.75	1721.0	7.50	1707.0	3.75	1715.1	1.87	1711.4	1.87	1721.2	3.75	1714.2	1.41	1720.2	1.87	1709.6
04/20/16	0.22	1711.1	0.94	1717.1	3.75	1721.0	7.50	1707.0	3.75	1715.1	1.87	1711.4	1.87	1721.2	3.75	1715.2	1.41	1720.3	1.87	1709.6
04/21/16	0.22	1711.0	0.94	1716.9	3.75	1721.0	7.50	1707.0	3.75	1715.1	1.88	1711.4	1.88	1721.2	3.75	1716.7	1.35	1720.3	1.88	1709.6
04/22/16	0.22	1711.0	0.94	1716.9	3.73	1721.0	7.46	1707.0	3.73	1715.1	1.87	1711.3	1.87	1721.1	3.75	1717.0	0.94	1720.3	1.88	1709.6
04/23/16	0.21	1711.0	0.94	1716.6	3.77	1721.0	7.54	1707.0	3.77	1715.1	1.88	1711.3	1.88	1721.1	3.75	1717.5	0.94	1720.3	1.88	1709.6
04/24/16	0.21	1711.2	0.94	1716.3	3.75	1721.0	7.50	1707.0	2.56	1715.1	1.87	1711.4	1.88	1721.1	3.75	1717.7	0.94	1720.3	1.88	1709.6
04/25/16	0.21	1711.4	0.94	1717.1	3.74	1721.0	7.49	1707.0	2.01	1715.7	1.87	1711.3	1.87	1721.1	3.74	1717.9	0.94	1720.5	1.87	1709.6
04/26/16	0.21	1711.1	0.94	1717.1	3.76	1721.0	7.51	1707.0	1.95	1715.7	1.88	1711.4	1.88	1721.0	3.76	1718.0	0.94	1720.6	1.88	1709.6
04/27/16	0.21	1711.5	0.94	1717.1	3.75	1721.0	7.50	1707.0	1.90	1715.7	1.87	1711.4	1.88	1721.0	3.75	1718.1	0.94	1720.6	1.88	1709.6
04/28/16	0.20	1711.2	0.94	1717.2	3.75	1721.0	7.50	1707.0	1.88	1715.7	1.87	1711.3	1.87	1721.0	3.75	1718.2	0.94	1720.6	1.87	1709.6
04/29/16 ⁴	0.20	1711.4	0.64	1716.9	2.57	1721.0	5.16	1707.0	1.32	1715.7	1.28	1711.3	1.28	1721.0	2.55	1712.3	0.94	1720.9	2.22	1709.6
04/30/16	0.24	1711.0	0.94	1718.8	3.75	1721.5	7.50	1707.0	1.88	1716.5	1.88	1711.4	1.88	1721.3	3.75	1712.4	0.94	1721.3	2.87	1709.7
Monthly Average	0.23	1711.1	0.93	1716.6	3.71	1721.0	7.42	1707.0	3.32	1715.2	1.77	1713.9	1.85	1721.5	3.70	1720.7	0.84	1720.7	1.92	1709.6
Analytical ¹	Conc (mg/L)	Date	Conc (mg/L)	Date	Conc (mg/L)	Date	Conc (mg/L)	Date	Conc (mg/L)	Date	Conc (mg/L)	Date	Conc (mg/L)	Date	Conc (mg/L)	Date	Conc (mg/L)	Date	Conc (mg/L)	Date
Perchlorate	1600	4/5/2016	1700	4/5/2016	730	4/8/2016	310	4/8/2016	220	4/8/2016	640	4/8/2016	640	4/5/2016	740	4/5/2016	1100	4/5/2016	1400	4/5/2016
Hexavalent Chromium	22.0	4/5/2016	19.2	4/5/2016	10.9	4/8/2016	3.79	4/8/2016	0.632	4/8/2016	0.639	4/8/2016	7.30	4/5/2016	9.19	4/5/2016	18.8	4/5/2016	18.7	4/5/2016
Total Chromium	33	4/5/2016	28	4/5/2016	8.4	4/8/2016	3.5	4/8/2016	2.1	4/8/2016	0.69	4/8/2016	6.1	4/5/2016	7.4	4/5/2016	24	4/5/2016	30	4/5/2016

Flow reported as gpm is a daily average calculated from the totalizer reading. NA=Not Available.
 1: Analytical results are reported from TestAmerica.
 3: Flow increased at the direction of the Trust on 04/13/2016.
 4: 1 well field offline at 6:54 AM for GWTP upgrade; back online at 2:14 PM.
 6: Flow increased at the direction of the Trust on 04/04/2016.

Nevada Environmental Response Trust Groundwater Extraction and Treatment System Enhanced Operational Metrics																				
Date	I-Q		I-R		I-S		I-T		I-U		I-V		I-W		I-X		I-Z			
	Flow (gpm)	Water Elevation (ft amsl)	Flow ⁷ (gpm)	Water Elevation (ft amsl)	Flow (gpm)	Water Elevation (ft amsl)	Flow (gpm)	Water Elevation (ft amsl)	Flow (gpm)	Water Elevation (ft amsl)	Flow (gpm)	Water Elevation (ft amsl)	Flow ² (gpm)	Water Elevation (ft amsl)	Flow ² (gpm)	Water Elevation (ft amsl)	Flow (gpm)	Water Elevation (ft amsl)		
04/01/16	0.47	1717.5	1.72	1721.3	3.75	1723.1	0.47	1712.4	0.47	1712.3	3.75	1718.4	0.83	1710.0	1.41	1721.2	0.46	1721.3	7.50	1711.0
04/02/16	0.47	1717.5	1.88	1718.2	3.75	1723.0	0.47	1712.4	0.47	1712.3	3.75	1718.3	0.83	1710.0	1.13	1721.2	0.46	1720.8	7.50	1710.0
04/03/16	0.47	1717.5	1.53	1718.8	3.75	1723.0	0.47	1712.4	0.47	1712.3	3.75	1718.4	0.84	1710.0	0.94	1721.3	0.46	1720.8	7.50	1711.0
04/04/16	0.45	1717.5	1.02	1719.0	3.52	1723.0	0.45	1712.5	0.45	1712.5	3.58	1718.4	0.84	1710.0	0.90	1721.3	0.44	1720.8	6.82	1711.0
04/05/16	0.47	1718.0	1.80	1719.9	3.75	1723.3	0.47	1712.4	0.47	1713.2	3.75	1718.6	0.86	1710.0	0.94	1721.5	0.46	1721.4	7.50	1711.6
04/06/16	0.47	1717.9	1.87	1717.8	3.75	1722.3	0.47	1712.4	0.47	1713.2	3.75	1718.5	0.86	1710.0	0.94	1721.6	0.45	1720.9	7.50	1711.3
04/07/16	0.47	1717.9	1.88	1718.1	7.15	1722.2	0.47	1712.5	0.47	1713.4	3.75	1718.5	0.86	1710.0	0.94	1721.6	0.46	1720.8	7.50	1711.4
04/08/16	0.47	1717.9	1.90	1716.5	7.50	1721.5	0.47	1712.5	0.47	1713.5	3.75	1718.6	0.86	1710.0	0.94	1721.6	0.46	1720.3	7.50	1711.5
04/09/16	0.47	1718.0	2.04	1714.4	8.07	1713.7	0.47	1712.8	0.47	1713.5	3.75	1718.5	0.86	1710.0	0.94	1721.6	0.50	1719.8	7.50	1711.4
04/10/16	0.47	1718.0	1.70	1714.4	6.94	1713.7	0.47	1712.8	0.47	1713.6	3.75	1718.6	0.86	1710.0	0.94	1721.6	0.43	1719.8	7.50	1711.4
04/11/16	0.47	1718.0	2.73	1714.4	7.50	1710.0	0.47	1712.8	0.47	1713.5	3.75	1718.5	0.86	1710.0	0.94	1721.6	0.47	1719.8	7.50	1711.4
04/12/16	0.47	1718.0	2.73	1708.9	7.50	1710.0	0.47	1712.8	0.47	1713.5	3.75	1718.5	0.84	1710.0	1.71	1721.6	0.92	1719.8	7.50	1711.3
04/13/16	0.47	1717.9	2.65	1709.0	7.33	1710.0	0.47	1712.8	0.47	1713.5	3.75	1718.5	0.82	1710.0	1.87	1720.7	1.01	1719.0	7.50	1711.5
04/14/16	0.47	1717.9	2.61	1709.1	4.07	1710.0	0.47	1712.8	0.47	1713.7	3.75	1718.4	0.81	1710.0	1.88	1720.3	0.93	1715.3	7.50	1711.5
04/15/16	0.47	1717.9	2.61	1708.8	3.75	1710.0	0.47	1712.8	0.47	1713.8	3.75	1718.4	0.81	1710.0	1.88	1720.4	0.94	1716.4	7.50	1711.4
04/16/16	0.47	1717.8	2.61	1708.8	3.75	1710.0	0.47	1712.7	0.47	1713.8	3.75	1718.3	0.81	1710.0	1.87	1720.3	0.92	1716.1	7.50	1711.3
04/17/16	0.47	1717.8	2.60	1709.1	3.75	1710.0	0.47	1712.7	0.47	1713.8	3.75	1718.3	0.83	1710.0	1.88	1720.3	0.92	1716.1	7.50	1711.2
04/18/16	0.47	1717.8	2.51	1709.5	3.75	1710.0	0.47	1712.7	0.47	1713.8	3.75	1718.3	0.82	1710.0	2.69	1720.3	1.31	1716.3	7.50	1711.1
04/19/16	0.47	1717.8	2.48	1709.0	3.75	1710.0	0.47	1712.7	0.47	1713.8	3.75	1718.3	0.82	1710.0	2.81	1718.9	0.91	1717.4	7.50	1711.1
04/20/16	0.47	1717.6	2.51	1709.4	3.75	1710.0	0.47	1712.7	0.47	1713.8	3.75	1718.3	0.82	1710.0	2.81	1718.9	0.91	1716.9	7.50	1711.2
04/21/16	0.47	1717.4	2.48	1709.3	3.75	1710.0	0.47	1712.6	0.47	1713.8	3.75	1718.3	0.82	1710.0	2.81	1718.9	0.92	1716.9	7.50	1711.2
04/22/16	0.47	1717.4	2.46	1708.8	3.75	1710.0	0.47	1712.6	0.47	1713.7	3.73	1718.3	0.82	1710.0	2.81	1718.9	0.92	1717.0	7.46	1711.2
04/23/16	0.47	1717.3	2.63	1709.2	3.75	1710.0	0.47	1712.6	0.47	1713.7	3.77	1718.3	0.82	1710.0	2.81	1718.9	0.93	1717.2	7.54	1711.1
04/24/16	0.47	1717.2	2.63	1709.0	3.75	1710.0	0.47	1712.5	0.47	1713.7	3.75	1718.3	0.82	1710.0	2.81	1719.1	0.92	1718.0	7.50	1711.1
04/25/16	0.47	1717.2	2.62	1709.1	3.74	1710.0	0.47	1712.6	0.47	1713.7	3.74	1718.4	0.82	1710.0	2.81	1719.1	0.94	1718.1	7.48	1711.2
04/26/16	0.47	1717.1	2.63	1709.0	3.76	1710.0	0.47	1712.5	0.47	1713.7	3.76	1718.3	0.83	1710.0	2.82	1719.1	0.91	1718.0	7.51	1711.1
04/27/16	0.47	1717.1	2.63	1708.8	3.75	1710.0	0.47	1712.5	0.47	1713.8	3.75	1718.4	0.83	1710.0	2.81	1719.0	0.92	1718.7	7.50	1711.2
04/28/16	0.47	1717.1	2.44	1708.9	3.75	1710.0	0.47	1712.5	0.47	1713.9	3.75	1718.4	0.84	1710.0	3.54	1719.0	1.69	1718.8	7.50	1711.3
04/29/16*	0.32	1717.0	1.72	1709.3	2.82	1710.0	0.32	1712.4	0.32	1713.9	2.55	1718.4	0.57	1710.0	1.33	1717.7	1.27	1705.0	5.10	1705.0
04/30/16	0.47	1718.9	2.53	1710.1	3.75	1710.0	0.47	1713.1	0.47	1714.6	3.75	1719.1	0.94	1710.0	1.87	1720.4	1.85	1707.9	7.50	1707.9
Monthly Average	0.46	1717.7	2.27	1712.2	4.58	1713.6	0.46	1712.6	0.46	1713.5	3.70	1718.4	0.83	1710.0	1.89	1720.3	0.84	1717.8	7.40	1710.9
Analytical ¹	Conc (mg/L)	Date	Conc (mg/L)	Date	Conc (mg/L)	Date	Conc (mg/L)	Date	Conc (mg/L)	Date	Conc (mg/L)	Date	Conc (mg/L)	Date	Conc (mg/L)	Date	Conc (mg/L)	Date	Conc (mg/L)	Date
Perchlorate	1400	4/5/2016	1300	4/8/2016	510	4/5/2016	1800	4/5/2016	1800	4/5/2016	920	4/8/2016	1100	4/5/2016	1100	4/5/2016	1300	4/8/2016	340	4/8/2016
Hexavalent Chromium	22.2	4/5/2016	0.321	4/8/2016	1.87	4/5/2016	22.3	4/5/2016	22.1	4/5/2016	15.7	4/8/2016	18.8	4/5/2016	10.2	4/5/2016	0.443	4/8/2016	8.98	4/8/2016
Total Chromium	14	4/5/2016	0.45	4/8/2016	1.3	4/5/2016	16	4/5/2016	32	4/5/2016	16	4/8/2016	26	4/5/2016	8.9	4/5/2016	0.55	4/8/2016	8.4	4/8/2016

Notes:
 Flow reported as gpm is a daily average calculated from the totalizer reading. NA = Not Available
 1: Analytical results are reported from TestAmerica.
 2: Flow increased at the direction of the Trust on 04/12/2016.
 4: I well field offline at 6:54 AM for GWTP upgrade; back online at 2:14 PM.
 7: Flow increased at the direction of the Trust on 04/01/2016 and again on 04/11/2016.

Nevada Environmental Response Trust Groundwater Extraction and Treatment System Enhanced Operational Metrics																	
Date	LS #2	GWTP Effluent				GW-11 Influent				FBR Plant Influent ¹							
	Flow (gpm)	Flow (gpm)	TA - Cr (TR) (mg/L)	TA - Cr (VI) (mg/L)	TA - ClO ₂ (mg/L)	Flow ² (gpm)	Cr (TR) (mg/L)	Cr (VI) (mg/L)	ClO ₂ (mg/L)	Flow ³ (gpm)	TA - ClO ₂ (mg/L)	ETI - ClO ₂ (mg/L)	TA - ClO ₂ (mg/L)	TA - SO ₄ (mg/L)	TA - NO ₃ - N (mg/L)	TA - Cr (TR) (mg/L)	TA - Cr (VI) (mg/L)
04/01/16	937	62				0				999		87					
04/02/16	906	61				0				967	94	87					
04/03/16	838	62				0				900		71					
04/04/16	744	52				0				796		74			8.3	0.088	0.082
04/05/16	637	56				0				693		81					
04/06/16	827	58				0				885		85					
04/07/16	705	61	0.20	ND	880	0				766		87					
04/08/16	704	63				0				767		94					
04/09/16	699	63				0				762	83	90					
04/10/16	761	61				22				822		98					
04/11/16	741	62				3				803		89		11		0.064	0.065
04/12/16	923	70				0				994		96					
04/13/16	937	62				0				999		92					
04/14/16	937	70	0.18	ND	680	0				1007		91					
04/15/16	938	69				0				1007		94					
04/16/16	937	65				0				1003	93	92					
04/17/16	927	64				0				990		74					
04/18/16	703	66				0				770		83		10		0.074	0.062
04/19/16	703	67				777				762		75					
04/20/16	703	66				885				885		130					
04/21/16	704	65	0.12	ND	770	841	0.088	0.086	43	876		99					
04/22/16	840	64				886				885		115					
04/23/16	757	64				917				911	85	72					
04/24/16	771	62				855				870		75					
04/25/16	937	62				882				913		75	160	1,500	8.0	0.037	0.015
04/26/16	774	63				881				939		73					
04/27/16	776	62				875				938		82					
04/28/16	915	70	0.15	ND	730	879				933		73					
04/29/16 ⁴	788	42				868				915		77					
04/30/16	938	56				880				920	67	76					
Monthly Average	814	62	0.16	ND	765	348	0.09	0.086	43	889	84	86	160	1500	9	0.066	0.056

Notes:
 Flow reported as gpm is a daily average calculated from the totalizer reading.
 ND = Not detected above laboratory method detection limit (ClO₂ = 0.5 ug/L; ClO₃ = 10 ug/L; NO₃-N= 0.055 mg/L, CR(VI) = 0.25 ug/L); NA = Not Available, sample result not reported.
 1: ETI = Envirogen internal process control data, TA = TestAmerica data.
 2: GW-11 Pond bypassed from 04/01 to 04/18 due to Boatman Bug bloom in the pond.
 3: FBR influent flow calculated as the sum of (LS #2) + (GWTP) flow due to GW-11 bypass from 04/01 to 04/18.
 4: I well field offline at 6:54 AM for GWTP upgrade; back online at 2:14 PM.

Nevada Environmental Response Trust Groundwater Extraction and Treatment System Enhanced Operational Metrics															
Date	1st Stage FBR Influent			2nd Stage FBR Influent			FBR Plant Effluent ¹								
	Flow (gpm)	pH (s.u.)	ORP (mV)	Flow (gpm)	pH (s.u.)	ORP (mV)	Flow (gpm)	TA - ClO ₂ (mg/L)	ETI - ClO ₂ (mg/L)	TA - ClO ₃ (mg/L)	TA - Cr (TR) (mg/L)	TA - Cr (VI) (mg/L)	TA - SO ₄ (mg/L)	TA - NO ₃ -N (mg/L)	ETI - Turbidity (NTU)
04/01/16	946	6.9	-367	859	6.3	-380	941		ND						10
04/02/16	966	6.9	-359	860	6.3	-391	936	ND	ND						10
04/03/16	944	6.8	-366	841	6.4	-397	986		ND						10
04/04/16	917	6.9	-370	882	6.4	-394	967		ND		0.013	ND		ND	15
04/05/16	925	6.8	-365	331	6.4	-374	957		ND						9
04/06/16	912	6.8	-365	875	6.3	-378	946		ND						14
04/07/16	907	6.8	-366	879	6.3	-381	942		ND						7
04/08/16	923	6.8	-365	873	6.3	-364	925		ND						10
04/09/16	912	6.8	-365	809	6.4	-368	931	ND	ND						5
04/10/16	917	6.9	-376	845	6.4	-369	846		ND						32
04/11/16	896	6.8	-373	878	6.4	-343	907		ND		0.017	ND		1.1	5
04/12/16	941	6.7	-367	842	6.3	-356	956		ND						5
04/13/16	952	6.8	-371	842	6.3	-360	991		ND						16
04/14/16	941	6.8	-371	832	6.4	-361	965		ND						12
04/15/16	941	6.8	-375	879	6.4	-364	964		ND						4
04/16/16	945	6.8	-368	891	6.4	-365	806	ND	ND						2
04/17/16	944	6.8	-376	880	6.4	-369	960		ND						12
04/18/16	941	6.9	-388	875	6.5	-383	956		ND		0.026	ND		0.8	12
04/19/16	887	6.9	-378	565	6.4	-373	926		ND						32
04/20/16	893	6.9	-383	897	6.4	-373	900		ND						20
04/21/16	929	6.8	-374	884	6.3	-377	950		ND						6
04/22/16	893	6.9	-388	877	6.4	-387	929		ND						33
04/23/16	895	6.9	-390	879	6.4	-384	937	ND	ND						19
04/24/16	893	6.9	-391	874	6.5	-384	944		ND						34
04/25/16	913	6.8	-389	872	6.4	-382	947		ND	ND		1,500	ND		24
04/26/16	954	6.9	-368	709	6.5	-379	997		ND						26
04/27/16	946	6.9	-384	686	6.5	-383	990		ND						9
04/28/16	936	6.9	-388	884	6.5	-388	985		ND						28
04/29/16	921	6.9	-395	895	6.5	-392	969		ND						9
04/30/16	927	6.9	-397	866	6.5	-375	953	ND	ND						9
Monthly Average	925	6.8	-376	829	6.4	-376	944	ND	ND	ND	0.017	ND	1500	0.95	15

Notes:

Flow reported as gpm is a daily average calculated from the totalizer reading.

ND = Not detected above laboratory method detection limit (ClO₂ = 0.5 ug/L; ClO₃ = 10 ug/L; NO₃-N = 0.055 mg/L, CR(VI) = 0.25 ug/L).

1: ETI = Envirogen internal process control data, TA = TestAmerica data.

GW-11 Level Monitoring		
Date	Field Measurement (ft)	Volume (MG)
4/5/2016	25.0	43.2
4/19/2016	24.3	44.1

GW-11 Leak Detection Monitoring				
Date	Amount Pumped ¹ (gallons)			
	NW Corner	NE Corner	SW Corner	SE Corner
4/7/2016	0	405	0	0
4/22/2016	0	299	0	0

GW-11 Composite Sample ²		
Analytes	Concentration	Units
Perchlorate	79	mg/L
Chlorate	200	mg/L
Ammonia as N	1.80	mg/L
Total Phosphorus	ND	mg/L
Total Dissolved Solids (TDS)	5500	mg/L
Total Suspended Solids (TSS)	8.0	mg/L
pH	8.01	s.u.
Calcium	370	mg/L
Iron	0.37	mg/L
Chromium (total)	0.047	mg/L
Chromium VI	0.018	mg/L
Chloride	1700	mg/L
Nitrate as N	NA ³	mg/L
Sulfate	1500	mg/L

Notes:

ND = Not detected above laboratory method detection limit (NH₃-N= 0.1 mg/L; Total P = 0.025 ug/L; Cr(VI) = 0.25 ug/L).

1: Pumping occurs over three consecutive days. The total amount pumped over the three day period is listed with the last day pumping occurred.

2: Corner Composite Sample collected quarterly, most recent sampling results presented. Sampled on: April 26, 2016 by Envirogen.

3: No value reported from TestAmerica for the April 26, 2016 sample.

Nevada Environmental Response Trust Groundwater Extraction and Treatment System Enhanced Operational Metrics						
Date	Flow ¹ (gpm)	FBR Influent Concentration			Influent Function Load ² (lbs/day)	6 Month Rolling Average (lbs/day)
		ClO ₄ (mg/L)	NO ₃ as N (mg/L)	ClO ₃ (mg/L)		
May 2015	858	105	6.1	170	549	571
June 2015	824	108	6.0	170	532	554
July 2015	857	100	5.0	180	547	555
Aug 2015	891	87	6.0	160	516	518
Sep 2015	785	103	9.0	180	540	534
Oct 2015	950	86	6.0	180	587	542
Nov 2015	927	82	6.6	140	496	536
Dec 2015	919	76	9.0	160	537	537
Jan 2016	892	85	9.0	160	542	536
Feb 2016	930	93	8.8	300	846	591
Mar 2016	960	84	9.0	160	581	598
April 2016	944	84	9.0	160	572	595

Notes:

Concentrations and flow are presented as monthly average.

1: Flow used in loading calculation is average monthly FBR effluent flow to be consistent with historical loading calculations.

2: FBR loading calculated as $[(0.9 \times \text{NO}_3 \text{ as N} + 0.17 \times \text{ClO}_3 + 0.18 \times \text{ClO}_4) \times \text{Flow} \times 1440 / 1000000 \times 8.34]$.

Figure 1 - GW-11 Pond Volume and Perchlorate Concentration

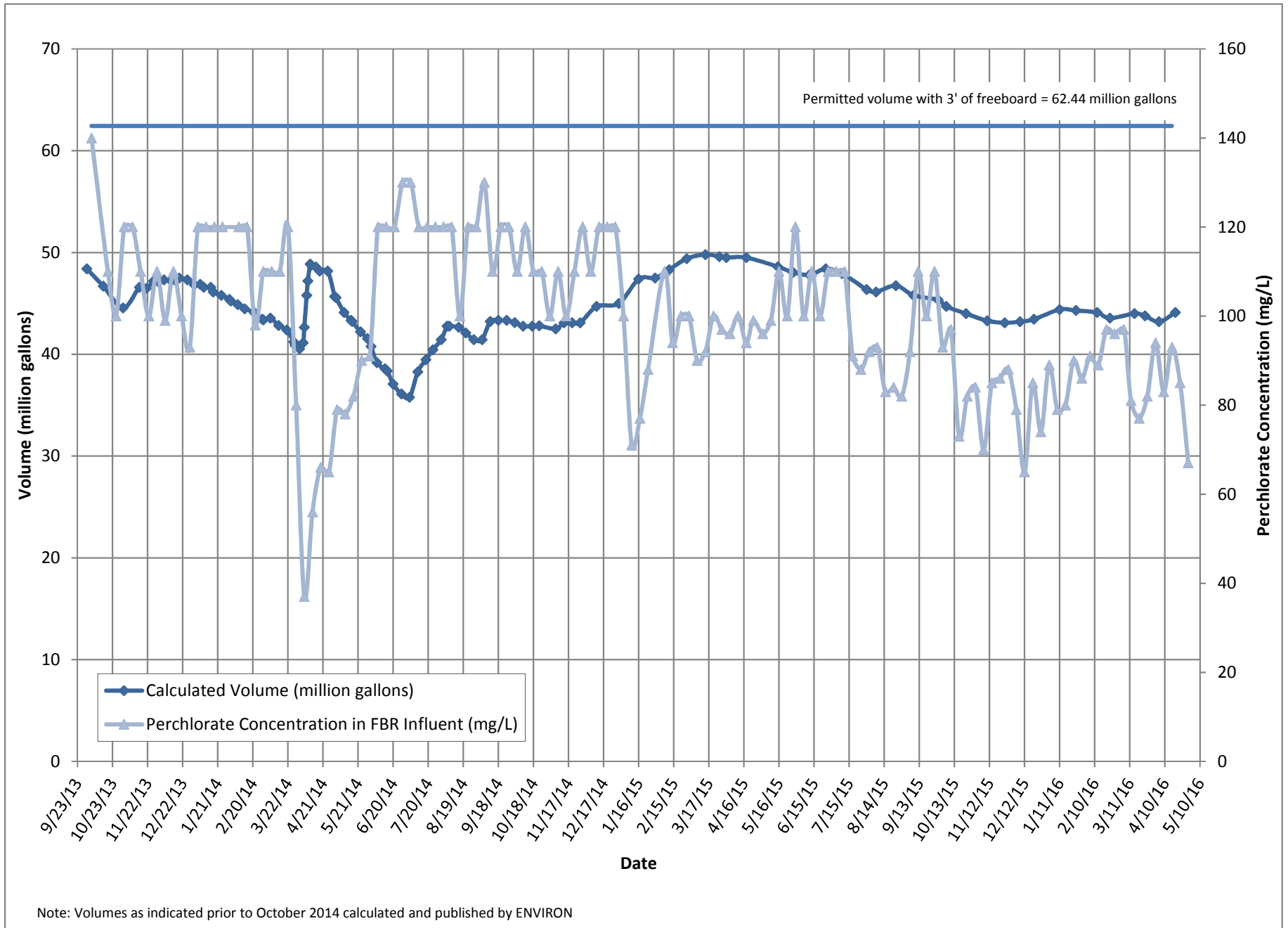


Figure 2 - FBR Equivalent Loading Calculation

