

Table 1 - Seep Well Field (SWF) Operational Metrics

Nevada Environmental Response Trust Groundwater Extraction and Treatment System Enhanced Operational Metrics																				
Date	LS #1 Flow ² (gpm)	East Well (PC-116R)		Center Well (PC99R3)		West Well (PC-115R)		PC 117		PC 118		PC 119		PC 120		PC 121		PC 133		
		Flow (gpm)	Water Elevation (ft amsl)	Flow (gpm)	Water Elevation (ft amsl)	Flow (gpm)	Water Elevation (ft amsl)	Flow (gpm)	Water Elevation (ft amsl)	Flow (gpm)	Water Elevation (ft amsl)	Flow (gpm)	Water Elevation (ft amsl)	Flow (gpm)	Water Elevation (ft amsl)	Flow (gpm)	Water Elevation (ft amsl)	Flow (gpm)	Water Elevation (ft amsl)	
03/01/16	547	117	1538.6	59	1541.0	117	1543.7	117	1538.5	59	1546.8	59	1548.4	0	1550.3	0	1550.1	10	1520.0	
03/02/16	654	117	1538.5	58	1541.4	117	1543.7	117	1538.4	59	1546.8	59	1548.3	0	1550.3	0	1550.0	10	1520.0	
03/03/16	611	117	1538.5	59	1541.0	117	1543.6	117	1538.4	58	1546.7	58	1548.3	0	1550.2	0	1550.0	14	1520.0	
03/04/16	559	117	1538.4	59	1541.1	117	1543.6	117	1538.3	59	1546.7	59	1548.3	0	1550.2	0	1550.0	12	1520.0	
03/05/16	529	118	1538.4	59	1541.5	117	1543.6	117	1538.3	59	1546.7	59	1548.2	0	1550.2	0	1550.0	11	1520.0	
03/06/16	561	117	1538.4	58	1541.0	117	1543.6	117	1538.2	58	1546.7	58	1548.2	0	1550.2	0	1549.9	11	1520.0	
03/07/16	531	118	1538.4	59	1541.1	118	1543.6	117	1538.2	59	1546.6	59	1548.2	0	1550.1	0	1549.9	11	1520.0	
03/08/16	500	117	1538.3	58	1541.2	117	1543.5	118	1538.2	58	1546.6	58	1548.2	0	1550.1	0	1549.9	10	1520.0	
03/09/16	526	117	1538.3	59	1541.4	116	1543.5	116	1538.2	59	1546.6	59	1548.2	0	1550.1	0	1549.9	10	1520.0	
03/10/16	507	117	1538.3	59	1540.9	117	1543.5	117	1538.2	59	1546.6	59	1548.1	0	1550.1	0	1549.9	11	1520.0	
03/11/16	493	117	1538.3	58	1541.0	117	1543.5	117	1538.2	58	1546.6	58	1548.1	0	1550.1	0	1549.9	11	1520.0	
03/12/16	506	113	1538.3	56	1540.7	112	1543.5	113	1538.2	56	1546.6	57	1548.1	0	1550.1	0	1549.8	11	1520.0	
03/13/16	469	117	1538.3	59	1541.0	117	1543.5	117	1538.1	59	1546.5	58	1548.1	0	1550.0	0	1549.8	11	1520.0	
03/14/16	469	117	1538.2	58	1540.9	117	1543.4	117	1538.1	59	1546.5	59	1548.1	0	1550.0	0	1549.8	12	1520.0	
03/15/16	496	117	1538.2	59	1540.9	117	1543.4	117	1538.1	58	1546.5	58	1548.1	0	1550.0	0	1549.8	12	1520.0	
03/16/16	495	117	1538.2	58	1540.9	118	1543.4	117	1538.1	58	1546.5	58	1548.0	0	1550.0	0	1549.8	12	1520.0	
03/17/16	491	118	1538.2	59	1540.7	117	1543.4	117	1538.0	59	1546.5	59	1548.0	0	1550.0	0	1549.8	11	1520.0	
03/18/16	488	102	1538.1	59	1541.2	117	1543.4	117	1538.0	58	1546.5	58	1548.0	0	1550.0	0	1549.7	11	1520.0	
03/19/16	488	132	1538.1	58	1540.9	117	1543.4	118	1538.0	59	1546.4	59	1548.0	0	1549.9	0	1549.7	11	1520.0	
03/20/16	485	117	1538.1	58	1540.9	117	1543.4	117	1538.0	58	1546.4	58	1548.0	0	1549.9	0	1549.7	11	1520.0	
03/21/16	487	117	1538.1	59	1540.7	117	1543.3	117	1538.0	59	1546.4	59	1548.0	0	1549.9	0	1549.7	11	1520.0	
03/22/16	490	117	1538.1	58	1541.0	117	1543.3	117	1538.0	59	1546.4	58	1548.0	0	1549.9	0	1549.7	12	1520.0	
03/23/16	489	116	1538.1	59	1540.9	117	1543.3	117	1537.9	58	1546.4	58	1547.8	0	1549.9	0	1549.7	14	1520.0	
03/24/16	488	117	1538.1	58	1541.1	117	1543.3	117	1537.9	58	1546.4	59	1547.8	0	1549.9	0	1549.6	14	1520.0	
03/25/16	469	117	1538.1	59	1540.6	117	1543.3	117	1537.9	59	1546.4	58	1547.8	0	1549.9	0	1549.6	12	1520.0	
03/26/16	469	117	1538.1	58	1540.7	117	1543.3	117	1537.9	58	1546.3	58	1547.8	0	1549.9	0	1549.6	9	1520.0	
03/27/16	468	117	1538.0	58	1540.9	117	1543.3	117	1537.8	59	1546.3	59	1547.8	0	1549.8	0	1549.6	9	1520.0	
03/28/16	485	117	1538.0	59	1540.5	118	1543.3	117	1537.9	58	1546.3	58	1547.8	0	1549.8	0	1549.6	9	1520.0	
03/29/16	469	117	1538.0	59	1540.9	117	1543.2	117	1537.8	59	1546.3	59	1547.7	0	1549.8	0	1549.6	9	1520.0	
03/30/16	469	117	1538.0	59	1540.9	117	1543.2	117	1537.8	59	1546.3	59	1547.7	0	1549.8	0	1549.6	12	1520.0	
03/31/16	468	117	1538.0	58	1540.5	117	1543.2	117	1537.8	58	1546.3	58	1547.7	0	1549.8	0	1549.6	15	1520.0	
Monthly Average	505	117	1538.2	59	1540.9	117	1543.4	117	1538.1	59	1546.5	58	1548.0	0	1550.0	0	1549.8	11	1520.0	
Analytical ¹	Conc (mg/L)	Date	Conc (mg/L)	Date	Conc (mg/L)	Date	Conc (mg/L)	Date	Conc (mg/L)	Date	Conc (mg/L)	Date	Conc (mg/L)	Date	Conc (mg/L)	Date	Conc (mg/L)	Date	Conc (mg/L)	Date
Perchlorate	11	3/7/2016	14	3/7/2016	10	3/7/2016	5.4	3/7/2016	3.5	3/7/2016	0.27	3/7/2016	0.0064	3/7/2016	ND	3/7/2016	1.5	3/7/2016	ND	3/7/2016
Hexavalent Chromium	ND	3/7/2016	ND	3/7/2016	ND	3/7/2016	0.03	3/7/2016	ND	3/7/2016	ND	3/7/2016	ND	3/7/2016	ND	3/7/2016	ND	3/7/2016	ND	3/7/2016
Total Chromium	ND	3/7/2016	ND	3/7/2016	ND	3/7/2016	0.0049	3/7/2016	ND	3/7/2016	ND	3/7/2016	ND	3/7/2016	ND	3/7/2016	ND	3/7/2016	ND	3/7/2016

Notes:

Flow reported as gpm is a daily average calculated from the totalizer reading.

NA= Not Available; ND = Not detected above laboratory method detection limit (ClO₄ = 0.5 ug/L; ClO₃ = 10 ug/L; NO₃-N= 0.055 mg/L, CR(VI) = 0.25 ug/L).

1: Analytical results are reported from TestAmerica.

2: LS1 Totalizer experienced communication issues during the month of March 2016. Flows were averaged for 03/15 to 03/23.

Table 2- Athens Well Field (AWF) Operational Metrics

Nevada Environmental Response Trust Groundwater Extraction and Treatment System Enhanced Operational Metrics																		
Date	LS #3 Flow (gpm)	ART 1A/1B		ART 2A/2B		ART 3A/3B		ART 4A/4B		ART 6/9		ART 7A/7B		ART 8A/8B		PC-150		
		Flow (gpm)	Water Elevation (ft amsl)	Flow (gpm)	Water Elevation (ft amsl)	Flow (gpm)	Water Elevation (ft amsl)	Flow (gpm)	Water Elevation (ft amsl)	Flow (gpm)	Water Elevation (ft amsl)	Flow (gpm)	Water Elevation (ft amsl)	Flow (gpm)	Water Elevation (ft amsl)	Flow (gpm)	Water Elevation (ft amsl)	
03/01/16	234	0	1591.3	59	1590.5	56	1587.3	7	1575.0	59	1576.6	15	1578.0	59	1586.7	3	1584.6	
03/02/16	235	0	1591.3	58	1590.5	57	1587.3	8	1575.0	59	1576.6	15	1578.0	59	1586.7	3	1584.8	
03/03/16	234	0	1591.3	59	1590.5	56	1587.3	7	1575.0	58	1576.9	14	1578.0	59	1586.7	3	1584.8	
03/04/16	234	0	1591.3	58	1590.5	57	1587.3	7	1575.0	59	1576.6	15	1578.0	58	1586.7	3	1583.8	
03/05/16	234	0	1591.3	59	1590.5	56	1587.3	8	1575.0	59	1576.5	15	1578.0	59	1586.7	3	1585.0	
03/06/16	235	0	1591.2	59	1590.5	56	1587.3	7	1575.0	58	1576.6	15	1578.0	58	1586.7	3	1584.2	
03/07/16	235	0	1591.2	64	1590.5	56	1587.3	8	1575.0	59	1576.6	15	1578.0	59	1586.6	3	1584.4	
03/08/16	234	0	1591.2	58	1590.4	56	1587.3	7	1575.0	58	1576.5	15	1578.0	58	1586.6	3	1584.5	
03/09/16	232	0	1591.2	59	1590.4	56	1587.3	8	1575.0	59	1576.6	15	1578.0	59	1586.6	3	1584.8	
03/10/16	235	0	1591.2	59	1590.4	56	1587.3	8	1575.0	59	1576.6	14	1578.0	59	1586.6	3	1584.6	
03/11/16	234	0	1591.2	58	1590.4	56	1587.3	7	1575.0	58	1576.6	15	1578.0	59	1586.6	3	1584.0	
03/12/16	225	0	1591.2	57	1590.4	57	1587.6	7	1575.0	57	1576.6	15	1578.0	56	1586.6	3	1584.6	
03/13/16	234	0	1591.2	59	1590.4	58	1587.3	8	1575.0	58	1576.6	15	1578.0	59	1586.6	3	1583.9	
03/14/16	235	0	1591.2	58	1590.4	59	1587.3	7	1575.0	59	1576.6	15	1578.0	58	1586.6	3	1584.3	
03/15/16	234	0	1591.2	58	1590.4	58	1587.2	8	1575.0	58	1576.6	15	1578.0	58	1586.6	3	1583.8	
03/16/16	234	0	1591.2	59	1590.4	58	1587.2	7	1575.0	58	1576.6	15	1578.0	59	1586.6	3	1585.0	
03/17/16	235	0	1591.1	59	1590.4	59	1587.2	7	1575.0	59	1576.6	14	1578.0	59	1586.6	3	1584.1	
03/18/16	234	0	1591.1	59	1590.4	58	1587.2	8	1575.0	59	1576.6	15	1578.0	59	1586.5	2	1583.9	
03/19/16	235	0	1591.1	58	1590.3	59	1587.2	7	1575.0	58	1576.6	15	1578.0	58	1586.5	3	1583.9	
03/20/16	234	0	1591.1	59	1590.3	58	1587.2	8	1575.0	59	1576.6	15	1578.0	59	1586.5	4	1583.9	
03/21/16	234	0	1591.1	58	1590.3	59	1587.2	8	1575.0	58	1576.6	15	1578.0	59	1586.5	3	1585.0	
03/22/16	235	0	1591.1	59	1590.3	59	1587.2	7	1575.0	59	1576.6	14	1578.0	58	1586.5	3	1584.6	
03/23/16	235	0	1591.1	58	1590.3	58	1587.2	7	1575.0	58	1576.6	15	1578.0	58	1586.5	3	1584.5	
03/24/16	234	0	1591.1	59	1590.3	59	1587.2	7	1575.0	59	1576.6	15	1578.0	59	1586.5	3	1585.1	
03/25/16	234	0	1591.1	58	1590.3	58	1587.2	8	1575.0	58	1576.6	15	1578.0	58	1586.5	3	1584.7	
03/26/16	235	0	1591.1	58	1590.3	58	1587.2	7	1575.0	58	1576.6	15	1578.0	58	1586.5	3	1585.1	
03/27/16	234	0	1591.1	59	1590.3	59	1587.2	8	1575.0	59	1576.6	15	1578.0	59	1586.5	3	1584.7	
03/28/16	235	0	1591.1	59	1590.3	58	1587.2	8	1575.0	58	1576.6	14	1578.0	59	1586.5	3	1584.0	
03/29/16	234	0	1591.1	58	1590.3	59	1587.2	7	1575.0	59	1576.6	15	1578.0	58	1586.5	3	1584.0	
03/30/16	234	0	1591.1	59	1590.3	59	1587.2	8	1575.0	59	1576.6	15	1578.0	59	1586.5	3	1584.0	
03/31/16	235	0	1591.1	58	1590.3	58	1587.2	7	1575.0	58	1576.6	15	1578.0	58	1586.5	3	1584.5	
Monthly Average	234	0	1591.2	59	1590.4	58	1587.3	7	1575.0	59	1576.6	15	1578.0	59	1586.6	3	1584.4	
Analytical ¹		Conc (mg/L)	Date	Conc (mg/L)	Date	Conc (mg/L)	Date	Conc (mg/L)	Date	Conc (mg/L) ²	Date	Conc (mg/L)	Date	Conc (mg/L)	Date	Conc (mg/L)	Date	
Perchlorate		19	3/7/2016	23	3/7/2016	170	3/7/2016	230	3/7/2016	220	3/7/2016	110	3/7/2016	95	3/7/2016	190	3/7/2016	
Hexavalent Chromium		ND	3/7/2016	ND	3/7/2016	0.452	3/7/2016	0.345	3/7/2016	0.692	3/7/2016	ND	3/7/2016	0.804	3/7/2016	0.206	3/7/2016	
Total Chromium		0.03	3/7/2016	ND	3/7/2016	0.25	3/7/2016	0.46	3/7/2016	1	3/7/2016	0.68	3/7/2016	0.087	3/7/2016	0.42	3/7/2016	

Notes:
 Flow reported as gpm is a daily average calculated from the totalizer reading. NA = Not Available.
 1: Analytical results are reported from TestAmerica.
 2: Concentrations reported for ART-9.

Table 3 - Interceptor Well Field (IWF) Operational Metrics

Nevada Environmental Response Trust Groundwater Extraction and Treatment System Enhanced Operational Metrics																				
Date	I-AR		I-AA		I-AB		I-AC		I-AD		I-B		I-C		I-D		I-E		I-F	
	Flow ² (gpm)	Water Elevation (ft amsl)	Flow (gpm)	Water Elevation (ft amsl)	Flow (gpm)	Water Elevation (ft amsl)	Flow (gpm)	Water Elevation (ft amsl)	Flow (gpm)	Water Elevation (ft amsl)	Flow (gpm)	Water Elevation (ft amsl)	Flow (gpm)	Water Elevation (ft amsl)	Flow (gpm)	Water Elevation (ft amsl)	Flow (gpm)	Water Elevation (ft amsl)	Flow (gpm)	Water Elevation (ft amsl)
03/01/16	0.23	1727.6	0.47	1718.1	0.00	1721.6	0.00	1723.3	0.00	1724.9	0.87	1709.5	1.87	1722.7	0.94	1723.6	0.47	1717.7	3.75	1721.0
03/02/16	0.23	1727.7	0.47	1718.1	0.00	1721.6	0.00	1723.3	0.00	1724.9	0.87	1709.4	1.87	1722.8	0.94	1723.6	0.47	1717.7	3.75	1721.0
03/03/16	0.23	1727.7	0.47	1718.1	0.00	1721.6	0.00	1723.3	0.00	1724.9	0.88	1709.7	1.88	1722.8	0.94	1723.6	0.47	1717.8	3.75	1721.1
03/04/16	0.20	1727.7	0.47	1718.2	0.00	1721.6	0.00	1723.4	0.00	1724.9	0.87	1709.6	1.87	1722.9	0.94	1723.7	0.47	1717.8	3.75	1721.2
03/05/16	0.61	1728.3	0.47	1718.2	0.00	1721.6	0.00	1723.4	0.00	1724.9	0.88	1709.6	1.88	1722.9	0.94	1723.7	0.47	1717.9	3.75	1721.2
03/06/16	0.70	1715.9	0.47	1718.2	0.00	1721.6	0.00	1723.4	0.00	1724.9	0.87	1709.4	1.88	1722.9	0.94	1723.7	0.47	1717.9	3.75	1721.2
03/07/16	0.70	1718.9	0.47	1718.2	0.00	1721.6	0.00	1723.4	0.00	1724.9	0.88	1709.4	1.86	1722.9	0.93	1723.7	0.32	1717.9	3.67	1721.2
03/08/16	0.04	1722.3	0.37	1718.5	0.00	1721.6	0.00	1723.4	0.00	1724.9	0.75	1709.5	1.13	1723.5	0.73	1723.8	0.50	1718.0	2.89	1721.3
03/09/16	0.39	1729.7	0.47	1719.6	0.00	1721.7	0.00	1723.4	0.00	1724.9	0.94	1709.4	1.88	1723.7	0.94	1723.9	0.94	1718.1	3.75	1721.4
03/10/16	0.22	1729.8	0.47	1719.6	0.00	1721.8	0.00	1723.4	0.00	1724.9	0.94	1709.4	1.88	1723.8	0.94	1723.9	0.94	1718.1	3.75	1721.4
03/11/16	0.23	1727.8	0.47	1719.6	0.00	1721.8	0.00	1723.4	0.00	1725.0	0.94	1709.4	1.87	1723.8	0.94	1724.0	0.94	1718.2	3.75	1721.4
03/12/16	0.22	1727.5	0.45	1719.5	0.00	1721.8	0.00	1723.4	0.00	1725.0	0.91	1709.7	1.80	1723.9	0.90	1724.0	0.90	1718.1	3.59	1721.4
03/13/16	0.23	1727.4	0.47	1719.5	0.00	1721.9	0.00	1723.4	0.00	1725.0	0.95	1709.5	1.87	1723.9	0.94	1724.0	0.94	1718.2	3.75	1721.4
03/14/16	0.23	1727.5	0.47	1719.6	0.00	1721.9	0.00	1723.4	0.00	1725.0	0.96	1709.7	1.87	1724.0	0.94	1724.1	0.94	1718.2	3.75	1721.4
03/15/16	0.23	1727.6	0.47	1719.6	0.00	1721.9	0.00	1723.4	0.01	1725.0	0.97	1709.3	1.88	1724.0	0.94	1724.1	0.94	1718.2	3.75	1721.5
03/16/16	0.65	1727.7	0.47	1719.7	0.00	1721.9	0.00	1723.4	0.00	1725.0	0.97	1709.6	1.90	1724.0	2.57	1724.1	0.94	1718.3	3.75	1721.5
03/17/16	0.70	1722.7	0.47	1719.8	0.00	1721.9	0.00	1723.4	0.00	1725.0	0.96	1709.5	1.87	1722.2	2.81	1723.5	0.51	1718.3	3.75	1721.5
03/18/16	1.06	1723.3	0.76	1719.9	0.00	1721.9	0.00	1723.4	0.00	1725.0	1.53	1709.6	3.03	1722.0	4.54	1723.4	0.76	1718.3	6.06	1721.5
03/19/16	0.27	1723.9	0.27	1720.1	0.00	1721.9	0.00	1723.4	0.00	1725.0	0.55	1709.9	1.09	1722.0	1.63	1723.4	0.27	1718.3	2.17	1721.6
03/20/16	0.47	1724.1	0.47	1720.1	0.00	1721.9	0.00	1723.3	0.00	1724.9	0.94	1709.3	1.88	1721.9	2.81	1723.3	0.47	1718.3	3.75	1721.5
03/21/16	0.47	1724.2	0.47	1720.1	0.00	1721.9	0.00	1723.3	0.00	1724.9	0.92	1709.5	1.87	1721.9	2.81	1723.3	1.08	1718.3	3.75	1721.6
03/22/16	0.47	1724.4	0.81	1720.2	0.00	1721.9	0.00	1723.4	0.00	1725.0	0.88	1709.5	3.40	1721.9	2.81	1723.3	0.94	1717.7	3.75	1721.4
03/23/16	0.47	1724.6	0.94	1715.9	0.00	1721.7	0.00	1723.3	0.00	1724.9	0.89	1709.4	2.87	1718.5	2.81	1723.1	0.94	1717.4	3.75	1721.1
03/24/16	0.47	1724.6	0.94	1715.8	0.00	1721.7	0.00	1723.3	0.00	1724.9	0.90	1709.4	1.87	1722.3	2.81	1723.1	0.94	1717.4	3.75	1721.1
03/25/16	0.47	1724.8	0.94	1715.9	0.00	1721.7	0.00	1723.3	0.00	1724.9	0.73	1709.5	1.87	1722.6	2.81	1723.1	0.94	1717.3	3.75	1721.0
03/26/16	0.47	1724.9	0.64	1715.9	0.00	1721.8	0.00	1723.3	0.00	1724.9	1.12	1709.5	1.83	1722.7	2.81	1723.1	0.94	1717.3	3.75	1720.9
03/27/16	0.26	1725.1	0.47	1716.6	0.00	1721.8	0.00	1723.3	0.00	1724.9	0.97	1709.6	1.54	1722.9	2.80	1723.1	0.53	1717.2	3.72	1720.9
03/28/16	0.23	1727.3	0.47	1719.1	0.00	1721.9	0.00	1723.4	0.00	1724.9	1.00	1709.6	1.88	1723.8	2.81	1723.2	0.47	1717.4	3.75	1721.0
03/29/16	0.23	1727.7	0.47	1719.0	0.00	1722.0	0.00	1723.4	0.00	1724.9	1.01	1709.4	1.88	1723.9	2.81	1723.2	0.47	1717.4	3.75	1721.0
03/30/16	0.23	1727.8	0.47	1718.9	0.00	1722.0	0.00	1723.3	0.00	1724.9	1.02	1709.6	1.80	1723.9	2.81	1723.3	0.47	1717.4	3.75	1721.0
03/31/16	0.23	1727.9	0.47	1719.0	0.00	1722.0	0.00	1723.3	0.00	1724.9	1.03	1709.9	1.94	1724.0	3.91	1723.3	0.47	1717.4	3.75	1721.1
Monthly Average	0.38	1725.8	0.53	1718.7	0.00	1721.8	0.00	1723.4	0.00	1724.9	0.93	1709.5	1.93	1722.9	1.94	1723.6	0.69	1717.9	3.74	1721.3
Analytical ¹	Conc (mg/L)	Date	Conc (mg/L)	Date	Conc (mg/L)	Date	Conc (mg/L)	Date	Conc (mg/L)	Date	Conc (mg/L)	Date	Conc (mg/L)	Date	Conc (mg/L)	Date	Conc (mg/L)	Date	Conc (mg/L)	Date
Perchlorate	1100	3/11/2016	91	3/11/2016	90	3/11/2016	140	3/15/2016	120	3/15/2016	470	3/11/2016	650	3/11/2016	610	3/11/2016	710	3/11/2016	860	3/11/2016
Hexavalent Chromium	0.002	3/11/2016	0.048	3/11/2016	0.044	3/11/2016	0.595	3/15/2016	0.011	3/15/2016	0.112	3/11/2016	2.4	3/11/2016	5.12	3/11/2016	7.4	3/11/2016	13	3/11/2016
Total Chromium	0.034	3/11/2016	0.058	3/11/2016	0.051	3/11/2016	0.7	3/15/2016	0.81	3/15/2016	0.17	3/11/2016	2.7	3/11/2016	5.5	3/11/2016	9.0	3/11/2016	17	3/11/2016

Notes:
 Flow reported as gpm is a daily average calculated from the totalizer reading. NA=Not Available.
 1: Analytical results are reported from TestAmerica.
 2: Calculated average flow on well I-AR on 03/09/2016 due to totalizer reset.
 3: Increased the flow on I-D on March 31, 2016.

Table 3 - Interceptor Well Field (IWF) Operational Metrics

Nevada Environmental Response Trust Groundwater Extraction and Treatment System Enhanced Operational Metrics																				
Date	I-G		I-H		I-I		I-J		I-K		I-L		I-M		I-N		I-O		I-P	
	Flow (gpm)	Water Elevation (ft amsl)	Flow (gpm)	Water Elevation (ft amsl)	Flow (gpm)	Water Elevation (ft amsl)	Flow (gpm)	Water Elevation (ft amsl)	Flow (gpm)	Water Elevation (ft amsl)	Flow (gpm)	Water Elevation (ft amsl)	Flow (gpm)	Water Elevation (ft amsl)	Flow (gpm)	Water Elevation (ft amsl)	Flow (gpm)	Water Elevation (ft amsl)	Flow (gpm)	Water Elevation (ft amsl)
03/01/16	0.12	1717.3	0.94	1711.5	3.75	1721.0	11.25	1707.0	2.81	1716.7	0.94	1721.8	1.87	1722.5	1.88	1726.5	0.47	1721.0	1.87	1709.8
03/02/16	0.24	1718.5	0.94	1712.0	3.75	1721.1	11.24	1707.0	2.81	1716.7	0.94	1721.8	1.87	1722.6	1.87	1726.5	0.47	1721.1	1.87	1709.8
03/03/16	0.24	1711.0	0.94	1712.1	3.75	1721.1	11.26	1707.0	2.48	1716.8	0.94	1721.8	1.88	1722.6	1.88	1726.5	0.47	1721.1	1.88	1709.8
03/04/16	0.24	1711.0	0.94	1712.7	3.75	1721.1	11.24	1707.0	1.87	1716.5	0.94	1721.8	1.87	1722.6	1.87	1726.6	0.47	1721.1	1.87	1709.8
03/05/16	0.24	1711.0	0.94	1713.1	3.75	1721.1	11.25	1707.0	1.88	1716.6	0.94	1721.8	1.88	1722.7	1.88	1726.6	0.47	1721.1	1.88	1709.8
03/06/16	0.24	1711.0	0.94	1713.5	3.75	1721.1	11.25	1707.0	1.87	1716.7	0.94	1721.9	1.88	1722.7	1.87	1726.6	0.47	1721.1	1.88	1709.8
03/07/16	0.24	1711.0	0.92	1713.5	3.72	1721.2	8.46	1707.0	1.85	1716.7	0.93	1721.9	1.86	1722.8	1.83	1726.6	0.46	1721.1	1.93	1709.8
03/08/16	0.21	1711.1	0.73	1714.7	2.95	1721.2	5.84	1707.0	1.44	1717.4	0.73	1722.3	1.47	1722.9	1.46	1726.8	0.37	1721.1	1.78	1709.8
03/09/16	0.24	1710.9	0.94	1717.6	3.75	1721.4	7.50	1707.0	1.88	1717.3	0.94	1722.8	1.88	1723.0	1.88	1724.7	0.47	1721.3	1.88	1709.9
03/10/16	0.24	1710.9	0.94	1717.5	3.75	1721.3	7.50	1707.0	1.88	1717.2	0.94	1722.8	1.88	1723.0	1.88	1724.6	0.47	1721.2	1.88	1709.9
03/11/16	0.23	1711.0	0.94	1717.6	3.75	1721.3	7.50	1707.0	1.87	1717.3	0.94	1722.9	1.87	1723.1	1.87	1724.8	0.47	1721.2	1.87	1709.8
03/12/16	0.22	1711.3	0.90	1716.3	3.59	1721.3	7.19	1707.0	1.80	1717.3	0.90	1722.9	1.80	1723.1	1.80	1724.8	0.45	1721.2	1.80	1709.9
03/13/16	0.23	1711.0	0.94	1716.4	3.75	1721.3	7.50	1707.0	1.87	1717.4	0.94	1723.0	1.87	1723.2	1.87	1724.9	0.47	1721.2	1.87	1709.9
03/14/16	0.23	1711.0	0.94	1716.8	3.75	1721.3	7.50	1707.0	1.87	1717.5	0.94	1723.0	1.87	1723.2	1.87	1725.0	0.47	1721.2	1.87	1709.9
03/15/16	0.23	1711.0	0.94	1716.8	3.75	1721.3	7.50	1707.0	1.88	1717.5	0.94	1723.0	1.88	1723.3	1.88	1725.1	0.47	1721.2	1.88	1709.9
03/16/16	0.24	1711.0	0.94	1717.1	3.75	1721.3	7.50	1707.0	3.04	1717.5	0.94	1723.1	1.87	1723.3	1.87	1725.1	0.88	1721.2	2.02	1709.9
03/17/16	0.24	1711.0	0.94	1716.9	3.75	1721.2	7.50	1707.0	3.75	1716.3	0.94	1722.8	1.88	1722.4	1.88	1725.1	0.94	1721.0	1.95	1709.8
03/18/16	0.38	1711.0	1.51	1716.7	6.06	1721.1	12.11	1707.0	6.06	1714.8	1.51	1722.7	3.03	1722.4	3.03	1725.8	1.51	1721.0	3.04	1709.8
03/19/16	0.14	1711.0	0.54	1716.1	2.17	1721.1	4.34	1707.0	2.17	1714.9	0.54	1722.7	1.09	1722.3	1.09	1725.7	0.54	1720.9	1.09	1709.8
03/20/16	0.23	1711.0	0.94	1716.0	3.75	1721.0	7.50	1707.0	3.75	1714.8	0.94	1722.6	1.88	1722.3	1.88	1725.7	0.94	1720.9	1.88	1709.8
03/21/16	0.23	1711.0	0.94	1716.0	3.75	1721.0	7.50	1707.0	3.75	1714.6	0.94	1722.6	1.87	1722.3	3.40	1725.7	0.94	1720.9	1.87	1709.8
03/22/16	0.23	1711.0	0.94	1716.2	3.75	1721.0	7.50	1707.0	3.75	1714.6	0.94	1722.4	1.88	1722.2	3.75	1723.2	1.07	1720.9	1.88	1709.8
03/23/16	0.23	1711.0	0.94	1713.3	3.75	1720.9	7.50	1707.0	3.75	1714.6	0.94	1721.6	1.88	1722.1	3.75	1723.3	1.07	1720.5	1.88	1709.6
03/24/16	0.23	1711.0	0.94	1712.1	3.75	1720.9	7.50	1707.0	3.75	1714.6	0.94	1721.8	1.87	1722.1	3.75	1723.4	0.47	1720.8	1.87	1709.6
03/25/16	0.23	1711.0	0.94	1712.5	3.75	1721.0	7.50	1707.0	3.75	1714.7	0.94	1722.0	1.87	1722.1	3.75	1723.5	0.47	1721.0	1.87	1709.6
03/26/16	0.24	1711.0	0.94	1712.6	3.75	1721.1	7.50	1707.0	3.75	1714.7	0.94	1722.2	1.88	1722.1	3.75	1723.6	0.47	1721.0	1.88	1709.6
03/27/16	0.20	1711.0	0.93	1712.3	3.73	1721.0	7.45	1707.0	3.73	1714.6	1.05	1722.4	1.86	1722.1	3.73	1723.6	0.39	1721.0	1.88	1709.6
03/28/16	0.23	1711.0	0.94	1714.6	3.75	1721.1	7.50	1707.0	3.75	1714.9	0.94	1723.0	1.88	1722.3	3.75	1725.0	0.62	1721.0	1.88	1709.6
03/29/16	0.22	1711.0	0.94	1714.6	3.75	1721.0	7.50	1707.0	3.75	1714.8	0.94	1723.2	1.88	1722.3	3.75	1725.5	0.47	1721.0	1.87	1709.6
03/30/16	0.22	1711.0	0.94	1714.1	3.75	1721.0	7.50	1707.0	3.75	1714.7	0.94	1723.0	1.87	1722.3	3.75	1725.5	0.47	1720.9	1.88	1709.6
03/31/16	0.22	1711.0	0.94	1714.2	3.75	1721.0	7.50	1707.0	3.75	1714.8	0.94	1723.0	1.87	1722.4	3.75	1725.6	0.47	1720.9	1.87	1709.6
Monthly Average	0.23	1711.5	0.93	1714.8	3.74	1721.1	8.24	1707.0	2.91	1716.0	1.08	1722.5	1.87	1722.6	2.52	1725.2	0.60	1721.0	1.89	1709.8
Analytical ¹	Conc (mg/L)	Date	Conc (mg/L)	Date	Conc (mg/L)	Date	Conc (mg/L)	Date	Conc (mg/L)	Date	Conc (mg/L)	Date	Conc (mg/L)	Date	Conc (mg/L)	Date	Conc (mg/L)	Date	Conc (mg/L)	Date
Perchlorate	1600	3/11/2016	1600	3/11/2016	730	3/15/2016	340	3/15/2016	250	3/15/2016	670	3/11/2016	570	3/11/2016	710	3/11/2016	1400	3/11/2016	1200	3/11/2016
Hexavalent Chromium	18.9	3/11/2016	16.4	3/11/2016	6.29	3/15/2016	2.99	3/15/2016	1.85	3/15/2016	1.04	3/11/2016	6.76	3/11/2016	8.24	3/11/2016	18	3/11/2016	15.4	3/11/2016
Total Chromium	28	3/11/2016	25	3/11/2016	11	3/15/2016	3.3	3/15/2016	2.1	3/15/2016	0.61	3/11/2016	8.2	3/11/2016	10.0	3/11/2016	22	3/11/2016	22	3/11/2016

Notes:
 Flow reported as gpm is a daily average calculated from the totalizer reading. NA=Not Available.
 1: Analytical results are reported from TestAmerica.

Table 3 - Interceptor Well Field (IWF) Operational Metrics

Nevada Environmental Response Trust Groundwater Extraction and Treatment System Enhanced Operational Metrics																				
Date	I-Q		I-R		I-S		I-T		I-U		I-V		I-W		I-X		I-Z			
	Flow (gpm)	Water Elevation (ft amsl)	Flow (gpm)	Water Elevation (ft amsl)	Flow (gpm)	Water Elevation (ft amsl)	Flow (gpm)	Water Elevation (ft amsl)	Flow (gpm)	Water Elevation (ft amsl)	Flow (gpm)	Water Elevation (ft amsl)	Flow (gpm)	Water Elevation (ft amsl)	Flow (gpm)	Water Elevation (ft amsl)	Flow (gpm)	Water Elevation (ft amsl)		
03/01/16	0.23	1721.1	1.88	1718.2	3.75	1722.4	0.37	1712.3	0.47	1717.6	3.75	1718.4	0.94	1710.0	0.70	1721.6	0.46	1720.1	7.50	1715.4
03/02/16	0.23	1720.2	1.85	1718.2	3.75	1722.4	0.37	1711.9	0.47	1717.6	3.75	1718.4	0.94	1710.0	0.70	1721.6	0.59	1720.2	7.50	1715.5
03/03/16	0.23	1720.2	1.88	1718.3	3.75	1722.4	0.36	1711.9	0.47	1717.6	3.75	1718.4	0.94	1710.0	0.86	1721.7	0.69	1720.0	7.50	1715.5
03/04/16	0.24	1720.3	1.49	1718.3	3.75	1722.5	0.35	1711.9	0.47	1717.7	3.75	1718.5	0.94	1710.0	0.94	1721.7	0.92	1719.7	7.49	1715.6
03/05/16	0.47	1720.3	0.99	1718.4	3.75	1722.5	0.35	1712.0	0.47	1717.7	3.75	1718.5	0.94	1710.0	0.94	1721.8	0.94	1719.8	7.50	1715.6
03/06/16	0.47	1720.3	0.96	1718.5	3.75	1722.5	0.35	1712.0	0.47	1717.7	3.75	1718.6	0.94	1710.0	0.94	1721.8	0.93	1719.9	7.50	1715.6
03/07/16	0.12	1720.3	0.93	1718.5	3.67	1722.5	0.35	1712.2	0.46	1717.8	3.72	1718.6	0.93	1710.0	0.58	1721.8	0.91	1719.8	4.71	1715.6
03/08/16	0.48	1720.9	0.73	1719.1	2.91	1722.6	0.36	1712.0	0.36	1718.2	2.93	1718.6	0.74	1710.0	0.37	1722.0	0.40	1720.0	2.93	1716.4
03/09/16	0.94	1711.7	0.94	1719.9	3.75	1723.0	0.47	1711.8	0.47	1718.8	3.75	1719.0	0.94	1710.0	0.47	1722.1	0.47	1720.7	3.75	1717.1
03/10/16	0.94	1711.7	0.94	1719.9	3.75	1723.0	0.47	1711.7	0.47	1718.8	3.75	1718.9	0.94	1710.0	0.47	1722.1	0.46	1720.7	3.75	1716.9
03/11/16	0.94	1711.7	0.94	1720.0	3.75	1723.1	0.47	1711.8	0.47	1718.8	3.75	1718.9	0.94	1710.0	0.47	1722.2	0.47	1722.3	3.75	1716.9
03/12/16	0.90	1711.7	0.90	1720.0	3.59	1723.1	0.45	1711.8	0.45	1718.8	3.59	1718.9	0.90	1710.0	0.45	1722.1	0.44	1720.9	3.59	1716.9
03/13/16	0.94	1711.7	0.94	1720.1	3.75	1723.2	0.47	1711.7	0.47	1718.8	3.75	1718.9	0.94	1710.0	0.47	1722.2	0.47	1721.1	3.75	1716.9
03/14/16	0.94	1711.7	0.94	1720.1	3.75	1723.2	0.47	1711.7	0.47	1718.8	3.75	1718.9	0.94	1710.0	0.47	1722.2	0.46	1721.1	3.75	1716.9
03/15/16	0.94	1711.7	0.94	1720.2	3.75	1723.2	0.47	1711.6	0.47	1718.8	3.75	1718.9	0.94	1710.0	0.47	1722.2	0.46	1721.2	3.75	1716.9
03/16/16	0.94	1711.7	0.94	1720.3	3.75	1723.3	0.47	1712.2	0.47	1718.8	3.75	1718.9	0.94	1710.0	0.47	1722.3	0.46	1721.4	6.94	1716.9
03/17/16	0.94	1711.7	0.94	1720.1	3.75	1722.5	0.47	1712.4	0.25	1718.8	3.75	1718.7	0.70	1710.0	0.47	1722.3	0.46	1721.1	7.50	1711.7
03/18/16	1.51	1711.7	1.51	1720.1	6.06	1722.4	0.76	1712.3	0.99	1718.7	6.06	1718.6	1.77	1710.0	0.76	1722.3	0.73	1720.8	12.04	1711.3
03/19/16	0.54	1711.7	0.70	1720.1	2.17	1722.3	0.27	1712.3	0.27	1718.7	2.17	1718.6	0.54	1710.0	0.27	1722.3	0.29	1720.6	4.23	1711.0
03/20/16	0.94	1711.7	0.75	1720.0	3.75	1722.3	0.47	1712.3	0.47	1718.7	3.75	1718.5	0.94	1710.0	0.47	1722.3	0.77	1720.4	7.38	1711.2
03/21/16	0.94	1711.7	1.53	1720.0	6.80	1722.3	0.47	1712.4	0.47	1718.7	3.75	1718.5	0.89	1710.0	0.95	1722.3	0.93	1720.3	7.48	1711.0
03/22/16	0.94	1711.7	1.62	1718.8	4.93	1721.7	0.47	1712.4	0.81	1718.8	3.75	1718.5	0.86	1710.0	1.83	1721.7	0.79	1720.0	7.50	1710.9
03/23/16	0.94	1711.7	1.88	1717.3	3.75	1723.1	0.47	1712.0	0.94	1709.2	3.75	1718.3	0.91	1710.0	1.88	1720.3	0.46	1720.4	7.50	1710.8
03/24/16	0.94	1711.7	1.41	1717.8	3.75	1723.2	0.47	1711.9	0.94	1709.2	3.75	1718.3	0.94	1710.0	1.87	1720.4	0.55	1720.3	7.50	1710.7
03/25/16	0.94	1711.7	0.94	1719.1	3.75	1723.4	0.47	1711.9	0.94	1709.0	3.75	1718.4	0.91	1710.0	1.87	1720.4	0.64	1720.4	7.50	1710.8
03/26/16	0.94	1711.7	0.94	1719.6	3.17	1723.5	0.47	1711.8	0.94	1709.0	3.75	1718.4	0.82	1710.0	1.88	1720.3	0.73	1720.4	7.50	1710.7
03/27/16	0.58	1711.7	0.93	1720.0	0.50	1723.6	0.47	1711.7	0.55	1709.0	3.73	1718.4	0.83	1710.0	1.46	1720.3	0.46	1720.9	6.44	1710.6
03/28/16	0.47	1717.1	0.94	1721.0	0.90	1724.2	0.47	1712.5	0.47	1711.8	3.75	1718.6	0.83	1710.0	1.41	1720.9	0.46	1721.1	7.50	1711.7
03/29/16	0.47	1717.6	0.94	1721.3	3.01	1724.3	0.47	1712.6	0.47	1711.9	3.75	1718.5	0.84	1710.0	1.41	1721.2	0.46	1721.3	7.50	1711.4
03/30/16	0.48	1716.9	0.94	1721.2	3.75	1723.4	0.47	1712.6	0.47	1711.9	3.75	1718.4	0.84	1710.0	1.37	1721.2	0.45	1721.2	7.50	1711.1
03/31/16	0.47	1717.4	0.94	1721.3	3.75	1723.4	0.47	1712.5	0.47	1712.0	3.75	1718.4	0.84	1710.0	1.31	1721.2	0.46	1721.3	7.50	1711.1
Monthly Average	0.71	1714.7	1.13	1719.5	3.64	1722.9	0.44	1712.1	0.54	1716.1	3.74	1718.6	0.91	1710.0	0.93	1721.6	0.59	1720.6	6.39	1713.8
Analytical ¹	Conc (mg/L)	Date	Conc (mg/L)	Date	Conc (mg/L)	Date	Conc (mg/L)	Date	Conc (mg/L)	Date	Conc (mg/L)	Date	Conc (mg/L)	Date	Conc (mg/L)	Date	Conc (mg/L)	Date	Conc (mg/L)	Date
Perchlorate	1300	3/11/2016	1200	3/11/2016	440	3/11/2016	1900	3/11/2016	1500	3/11/2016	1100	3/15/2016	1000	3/11/2016	940	3/11/2016	1400	3/11/2016	450	3/15/2016
Hexavalent Chromium	20.5	3/11/2016	0.393	3/11/2016	1.5	3/11/2016	18.3	3/11/2016	20	3/11/2016	12.9	3/15/2016	15.7	3/11/2016	9.13	3/11/2016	0.488	3/11/2016	7.73	3/15/2016
Total Chromium	25	3/11/2016	0.4	3/11/2016	1.2	3/11/2016	28	3/11/2016	28	3/11/2016	15	3/15/2016	20	3/11/2016	13	3/11/2016	0.71	3/11/2016	8.2	3/15/2016

Notes:
 Flow reported as gpm is a daily average calculated from the totalizer reading. NA = Not Available
 1: Analytical results are reported from TestAmerica.
 4: Flow decreased on 3/27/16 and 3/28/16 due to pump not restarting after cycling.

Table 4 - Treatment Plant Operational Metrics

Nevada Environmental Response Trust Groundwater Extraction and Treatment System Enhanced Operational Metrics																	
Date	LS #2	GWTP Effluent				GW-11 Influent				FBR Plant Influent ¹							
	Flow (gpm)	Flow (gpm)	TA - Cr (TR) (mg/L)	TA - Cr (VI) (mg/L)	TA - ClO ₂ (mg/L)	Flow (gpm) ⁴	Cr (TR) (mg/L)	Cr (VI) (mg/L)	ClO ₂ (mg/L)	Flow (gpm) ⁴	TA - ClO ₂ (mg/L)	ETI - ClO ₂ (mg/L)	TA - ClO ₂ (mg/L)	TA - SO ₄ (mg/L)	TA - NO ₃ - N (mg/L)	TA - Cr (TR) (mg/L)	TA - Cr (VI) (mg/L)
03/01/16	703	52				469				755		87			8	0.064	0.057
03/02/16	644	53				0				697		83					
03/03/16	699	53	0.20	ND	720	0				752		85					
03/04/16	493	53				0				546		84					
03/05/16	937	53				0				990		84					
03/06/16	920	53				0				973	97	90					
03/07/16	922	50				0				973		87			10	0.077	0.072
03/08/16 ²	878	39				239				917		93					
03/09/16	813	50				0				863		80					
03/10/16	844	50	0.16	ND	630	0				894		80					
03/11/16	863	50				0				913		83	160	1,300			
03/12/16	873	48				0				922	81	85					
03/13/16	927	50				0				978		79					
03/14/16	861	51				0				912		77					
03/15/16	851	51				0				901		89					
03/16/16	871	61				0				933		88					
03/17/16	881	61	0.20	NA ³	650	0	0.038	0.026	81	942		93					
03/18/16	934	62				0				995		88					
03/19/16	858	60				0				918	77	86					
03/20/16	926	59				0				985		98					
03/21/16	920	62				0				982		87			10	0.051	0.041
03/22/16	901	62				4				963		82					
03/23/16	820	62				0				882		93					
03/24/16	858	60	0.16	ND	720	0				918		73					
03/25/16	766	60				0				826		90					
03/26/16	938	62				0				999	82	87					
03/27/16	794	56				0				850		86					
03/28/16	938	54				0				992		85			9.7	0.092	0.064
03/29/16	938	56				0				994		83					
03/30/16	928	56				0				984		82					
03/31/16	937	58				0				996		83					
Monthly Average	853	55	0.18	ND	680	23	0.04	0.026	81	908	84	85	160	1300	9	0.067	0.055

Notes:
 Flow reported as gpm is a daily average calculated from the totalizer reading.
 ND = Not detected above laboratory method detection limit (ClO₂ = 0.5 ug/L; ClO₃ = 10 ug/L; NO₃-N= 0.055 mg/L, CR(VI) = 0.25 ug/L); NA = Not Available, sample result not reported.
 1: ETI = Envirogen internal process control data, TA = TestAmerica data.
 2. Plant recycled due to bugs clogging the screens.
 3: TestAmerica contracted out the Chromium VI sample analysis and has not yet received results for these samples.
 4. FBR influent flow calculated as the sum of LS2 + GWTP flow due to GW-11 bypass from 03/02 - 03/31.

Table 4 - Treatment Plant Operational Metrics

Nevada Environmental Response Trust Groundwater Extraction and Treatment System Enhanced Operational Metrics															
Date	1st Stage FBR Influent			2nd Stage FBR Influent			FBR Plant Effluent ¹								
	Flow (gpm)	pH (s.u.)	ORP (mV)	Flow (gpm)	pH (s.u.)	ORP (mV)	Flow (gpm) ⁶	TA - ClO ₂ (mg/L)	ETI - ClO ₂ (mg/L)	TA - ClO ₃ (mg/L)	TA - Cr (TR) (mg/L)	TA - Cr (VI) (mg/L)	TA - SO ₄ (mg/L)	TA - NO ₃ - N (mg/L)	ETI - Turbidity (NTU)
03/01/16	931	6.7	-425	881	6.3	-354	886		ND		0.01	ND		ND	20
03/02/16	936	6.6	-427	888	6.4	-354	954		ND						28
03/03/16	960	6.5	-429	858	6.3	-348	975		ND						2
03/04/16	955	6.6	-430	852	6.3	-350	977		ND						2
03/05/16	960	6.7	-428	890	6.3	-357	976		ND						0
03/06/16	955	6.8	-424	881	6.4	-371	989	ND	ND						46
03/07/16	962	6.8	-422	773	6.4	-377	986		ND		0.012	ND		ND	45
03/08/16	979	6.6	-426	931	6.4	-372	817 ²		ND						54
03/09/16	951	6.8	-430	920	6.3	-330	989		ND						14
3/10/2016 ⁵	6	6.8	-434	-3	6.4	-366	894		ND						21
03/11/16	955	6.8	-430	924	6.4	-335	913		ND	ND		1,200			18
03/12/16	952	6.8	-430	933	6.3	-352	949	ND	ND						9
03/13/16	957	6.8	-430	925	6.4	-340	964		ND						5
03/14/16	968	6.8	-362	851	6.3	-361	988		ND		0.026	ND		ND	33
03/15/16	958	6.7	-374	899	6.4	-397	981		ND						21
03/16/16	978	6.7	-381	875	6.3	-364	994		ND						33
03/17/16	975	6.7	-385	866	6.3	-372	942		ND						41
03/18/16	980	6.7	-342	851	6.3	-365	995		ND						46
03/19/16	974	6.7	-351	910	6.3	-357	977	ND	ND						51
03/20/16	970	6.7	-357	853	6.3	-363	985		ND						50
03/21/16	971	6.9	-341	863	6.4	-333	982		ND		0.023	ND		1.1	26
03/22/16	960	6.8	-325	921	6.4	-350	948		ND						93
03/23/16	967	6.8	-324	916	6.4	-376	954		ND						90
03/24/16	977	6.8	-326	910	6.4	-362	969		ND						46
03/25/16	969	6.9	-330	870	6.4	-389	973		ND						40
03/26/16	975	6.9	-332	878	6.4	-392	970	ND	ND						22
03/27/16	967	7.0	-345	874	6.4	-385	969		ND						18
03/28/16	945	7.0	-348	857	6.4	-367	912		ND		0.027	ND		1.3	44
03/29/16	951	7.0	-348	891	6.4	-372	907		ND						17
03/30/16	945	6.9	-360	835	6.4	-383	930		ND						17
03/31/16	941	6.9	-364	826	6.4	-373	925		ND						15
Monthly Average	930	6.8	-383	852	6.4	-363	958	ND	ND	ND	0.019	ND	1200	1.2	31

Notes:

Flow reported as gpm is a daily average calculated from the totalizer reading.

ND = Not detected above laboratory method detection limit (ClO₂ = 0.5 ug/L; ClO₃ = 10 ug/L; NO₃-N = 0.055 mg/L, CR(VI) = 0.25 ug/L).

1: ETI = Envirogen internal process control data, TA = TestAmerica data.

2: Plant recycled due to bugs clogging the screens.

5: Totalizer reset to zero due to lose of communication at the plant.

6: Flow was averaged due to PLC issues.

GW-11 Level Monitoring		
Date	Field Measurement (ft)	Volume (MG)
3/15/2016	24.5	44.0
3/24/2016	24.7	43.8

GW-11 Leak Detection Monitoring				
Date	Amount Pumped ¹ (gallons)			
	NW Corner	NE Corner	SW Corner	SE Corner
3/12/2016	0	0	0	0
3/26/2016	29	211	0	0

GW-11 Composite Sample ²		
Analytes	Concentration	Units
Perchlorate	87	mg/L
Chlorate	160	mg/L
Ammonia as N	1.10	mg/L
Total Phosphorus	0.08	mg/L
Total Dissolved Solids (TDS)	5000	mg/L
Total Suspended Solids (TSS)	16	mg/L
pH	8.06	s.u.
Calcium	350	mg/L
Iron	0.41	mg/L
Chromium (total)	0.06	mg/L
Chromium VI	0.04	mg/L
Chloride	1400	mg/L
Nitrate as N	7.80	mg/L
Sulfate	1300	mg/L

Notes:

ND = Not detected above laboratory method detection limit (NH₃-N= 0.1 mg/L; Total P = 0.025 ug/L; Cr(VI) = 0.25 ug/L).

1: Pumping occurs over three consecutive days. The total amount pumped over the three day period is listed with the last day pumping occurred.

2: Corner Composite Sample collected quarterly, most recent sampling results presented. Sampled on: January 18, 2016 by Envirogen.

Nevada Environmental Response Trust Groundwater Extraction and Treatment System Enhanced Operational Metrics						
Date	Flow ¹ (gpm)	FBR Influent Concentration			Influent Function Load ² (lbs/day)	6 Month Rolling Average (lbs/day)
		ClO ₄ (mg/L)	NO ₃ as N (mg/L)	ClO ₃ (mg/L)		
Mar 2015	918	95	7.0	100	445	591
Apr 2015	916	97	6.7	140	520	570
May 2015	858	105	6.1	170	549	571
June 2015	824	108	6.0	170	532	554
July 2015	857	100	5.0	180	547	555
Aug 2015	891	87	6.0	160	516	518
Sep 2015	785	103	9.0	180	540	521
Oct 2015	950	86	6.0	180	587	542
Nov 2015	927	82	6.6	140	496	538
Dec 2015	919	76	9.0	160	537	537
Jan 2016	892	85	9.0	160	542	536
Feb 2016 ³	930	93	8.8	300	846	591
Mar 2016	960	84	9.0	160	581	598

Notes:

Concentrations and flow are presented as monthly average.

1: Flow used in loading calculation is average monthly FBR effluent flow to be consistent with historical loading calculations.

2: FBR loading calculated as $[0.9 \cdot \text{NO}_3 \text{ as N} + 0.17 \cdot \text{ClO}_3 + 0.18 \cdot \text{ClO}_4 \cdot \text{Flow} \cdot 1440 / 1000000 \cdot 8.34]$.

3: The chlorate result is higher than recent historical results. The sample was tested again and the result confirmed by TestAmerica. Based on March 2016 sampling results, this value may be considered an outlier and retroactively replaced with the average of January 2016 and March 2016 results.

Figure 1 - GW-11 Pond Volume and Perchlorate Concentration

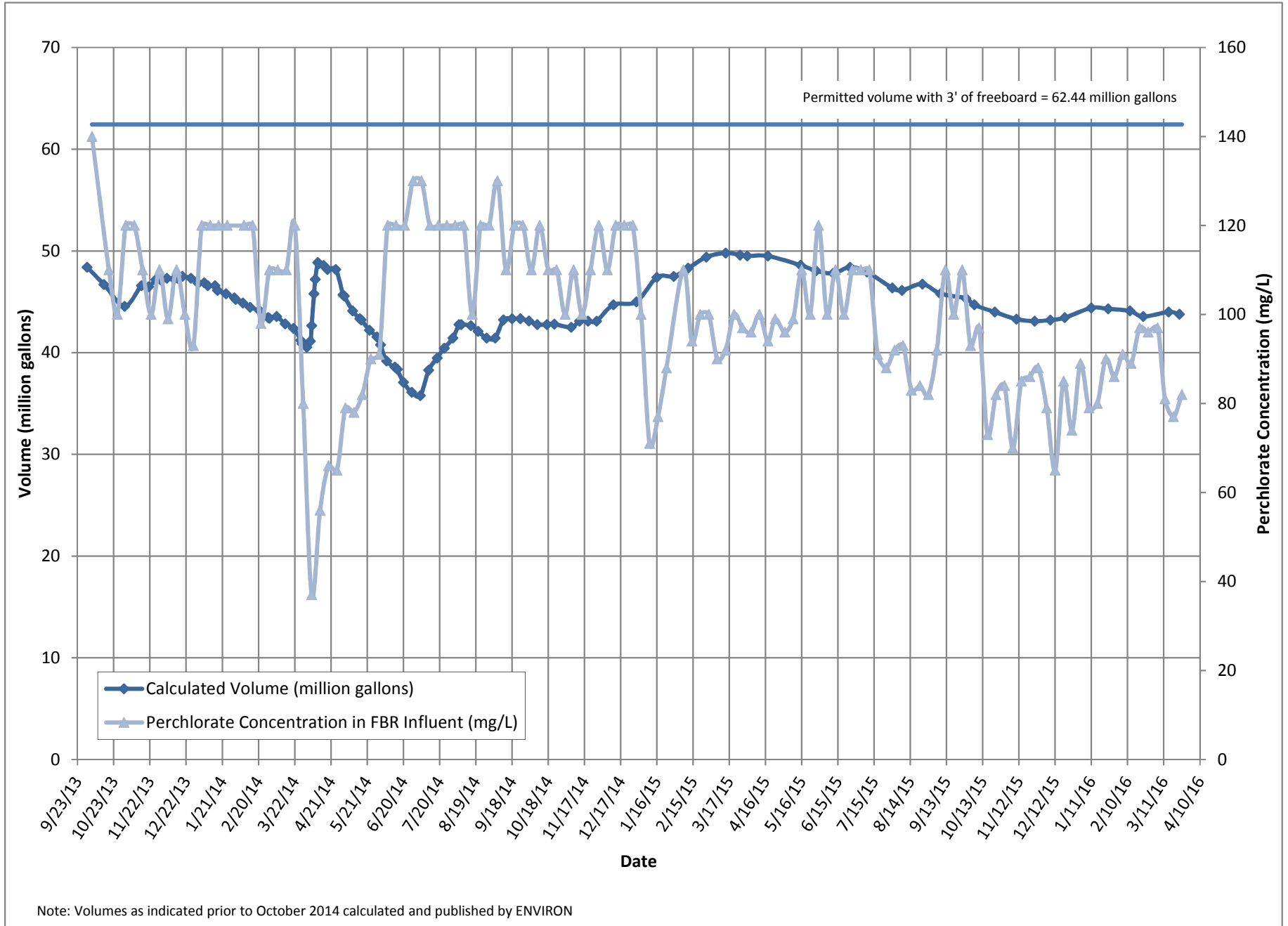


Figure 2 - FBR Equivalent Loading Calculation

