

Table 1 - Seep Well Field (SWF) Operational Metrics

Nevada Environmental Response Trust   Groundwater Extraction and Treatment System   Enhanced Operational Metrics																														
Date	LS #1 Flow <sup>2</sup> (gpm)	East Well (PC-116R)		Center Well (PC99R3)		West Well (PC-115R)		PC 117		PC 118		PC 119		PC 120		PC 121		PC 133												
		Flow (gpm)	Water Elevation <sup>6</sup> (ft amsl)	Flow (gpm)	Water Elevation <sup>6</sup> (ft amsl)	Flow (gpm)	Water Elevation <sup>6</sup> (ft amsl)	Flow (gpm)	Water Elevation <sup>6</sup> (ft amsl)	Flow (gpm)	Water Elevation <sup>6</sup> (ft amsl)	Flow (gpm)	Water Elevation <sup>6</sup> (ft amsl)	Flow (gpm)	Water Elevation <sup>6</sup> (ft amsl)	Flow (gpm)	Water Elevation <sup>6</sup> (ft amsl)	Flow (gpm)	Water Elevation <sup>6</sup> (ft amsl)											
11/01/15	622	64	NA	63	NA	94	NA	94	NA	78	NA	63	NA	0	NA	0	NA	8	NA											
11/02/15	334	2 <sup>4</sup>	NA	33	NA	50	NA	51	NA	42	NA	33	NA	0	NA	0	NA	4	NA											
11/03/15	773	121	NA	59	NA	87	NA	88	NA	73	NA	59	NA	0	NA	0	NA	8	NA											
11/04/15	216	117	NA	58	NA	86	NA	87	NA	73	NA	58	NA	0	NA	0	NA	8	NA											
11/05/15	398	107	NA	65	NA	12	NA	65	NA	53	NA	43	NA	0	NA	0	NA	8	NA											
11/06/15	606	156	NA	94	NA	36	NA	94	NA	78	NA	63	NA	0	NA	0	NA	8	NA											
11/07/15	624	156	NA	93	NA	64	NA	94	NA	78	NA	63	NA	0	NA	0	NA	8	NA											
11/08/15	625	68	NA	45	NA	37	NA	42	NA	36	NA	28	NA	0	NA	0	NA	8	NA											
11/09/15	382	104	NA	64	NA	53	NA	74	NA	62	NA	50	NA	0	NA	0	NA	4	NA											
11/10/15	518	118	NA	68	NA	53	NA	78	NA	65	NA	52	NA	0	NA	0	NA	8	NA											
11/11/15	481	118	NA	70	NA	49	NA	76	NA	63	NA	51	NA	0	NA	0	NA	8	NA											
11/12/15	519	118	NA	71	NA	43	NA	75	NA	62	NA	50	NA	0	NA	0	NA	8	NA											
11/13/15	626	120	NA	72	NA	48	NA	76	NA	63	NA	51	NA	0	NA	0	NA	7	NA											
11/14/15	625	115	NA	69	NA	50	NA	74	NA	61	NA	49	NA	0	NA	0	NA	7	NA											
11/15/15	539	109	NA	66	NA	48	NA	71	NA	59	NA	47	NA	0	NA	0	NA	7	NA											
11/16/15	527	115	1540.2	68	1542.2	49	1543.5	75	1542.4	62	1546.3	50	1548.1	0	1550.0	0	1549.3	7	1525.0											
11/17/15	548	116	1538.9	69	1537.9	49	1543.6	75	1540.8	62	1546.6	50	1548.3	0	1550.3	0	1550.1	7	1549.9											
11/18/15	552	116	1538.8	69	1538.4	48	1543.6	74	1540.8	62	1546.6	50	1548.3	0	1550.3	0	1550.0	7	1520.0											
11/19/15	562	115	1538.8	69	1520.0	48	1543.6	74	1540.7	62	1546.6	49	1548.3	0	1550.3	0	1550.0	7	1520.0											
11/20/15	569	115	1538.8	69	1520.0	48	1543.6	74	1540.7	62	1546.6	49	1548.3	0	1550.2	0	1550.0	7	1520.0											
11/21/15	560	114	NA	69	NA	48	NA	74	NA	62	NA	49	NA	0	NA	0	NA	7	NA											
11/22/15	551	114	NA	68	NA	48	NA	74	NA	62	NA	49	NA	0	NA	0	NA	7	NA											
11/23/15	553	115	NA	69	NA	48	NA	74	NA	62	NA	50	NA	0	NA	0	NA	7	NA											
11/24/15	556	115	NA	69	NA	48	NA	74	NA	62	NA	50	NA	0	NA	0	NA	7	NA											
11/25/15	633	159	NA	79	NA	88	NA	98	NA	80	NA	80	NA	0	NA	0	NA	7	NA											
11/26/15	586	148	NA	74	NA	74	NA	74	NA	74	NA	74	NA	0	NA	0	NA	8	NA											
11/27/15	566	142	1538.7	62	1520.0	71	1543.5	71	1540.7	71	1546.5	71	1548.2	0	1550.2	0	1550.0	7	1520.0											
11/28/15	587	147	1538.7	74	1520.0	74	1543.5	73	1540.7	73	1546.6	73	1548.3	0	1550.2	0	1550.0	7	1520.0											
11/29/15	576	147	1538.7	73	1520.0	73	1543.5	74	1540.7	74	1546.5	74	1548.2	0	1550.2	0	1550.0	7	1520.0											
11/30/15	580	140	1538.7	70	1520.0	70	1543.5	70	1540.7	70	1546.5	70	1548.2	0	1550.2	0	1550.0	7	1520.0											
Monthly Average	546	117	1538.9	68	1526.5	56	1543.5	76	1540.9	65	1546.5	55	1548.2	0	1550.2	0	1549.9	7	1523.9											
Analytical <sup>1</sup>	Conc (mg/L)		Date	Conc (mg/L)		Date	Conc (mg/L)		Date	Conc (mg/L)		Date	Conc (mg/L)		Date	Conc (mg/L)		Date	Conc (mg/L)		Date									
Perchlorate	19		11/2/2015	21		11/2/2015	11		11/2/2015	12		11/2/2015	3.0		11/2/2015	0.22		11/2/2015	0.054		11/2/2015	3.0		11/2/2015	0.14		11/2/2015	0.94		11/2/2015
Hexavalent Chromium	Future Metric - Enhanced Operations (to be collected by ETI) <sup>3</sup>																													
Total Chromium <sup>2</sup>	ND		11/2/2015	ND		11/2/2015	ND		11/2/2015	ND		11/2/2015	ND		11/2/2015	ND		11/2/2015	ND		11/2/2015	ND		11/2/2015	ND		11/2/2015			

Notes:  
 Flow reported as gpm is a daily average calculated from the totalizer reading.  
 NA= Not Available; ND = Not detected above laboratory method detection limit (ClO<sub>4</sub> = 0.5 ug/L; ClO<sub>3</sub> = 10 ug/L; NO<sub>3</sub>-N= 0.055 mg/L, CR(VI) = 0.25 ug/L).  
 1: Analytical results are reported from TestAmerica.  
 2: Quarterly results, most recent sampling concentrations listed (Samples will be transitioned to monthly reporting in the future).  
 3: Following contractual amendment agreements, ETI will begin collecting monthly hexavalent chromium samples.  
 4: Flows reading artificially low due to starts and stops associated with construction of the Enhanced Metrics Project.  
 5: Due to flowmeter replacement, Enhanced Metrics construction activities, and calibration, LS3 flows during the month of November were estimated or adjusted to compensate for falsely high or falsely low totalizer outputs.  
 6: Water elevation readings automatically collected at midnight are available beginning November 16, 2015. Water elevation results are unavailable November 21 – 26 due to system shutdown. Water elevation data may be revised as the shutdown calibration phase is completed.

Nevada Environmental Response Trust   Groundwater Extraction and Treatment System   Enhanced Operational Metrics																								
Date	LS #3 Flow <sup>2</sup> (gpm)	ART 1A/1B		ART 2A/2B		ART 3A/3B		ART 4A/4B		ART 6/9		ART 7A/7B		ART 8A/8B		PC-150								
		Flow (gpm)	Water Elevation <sup>7</sup> (ft amsl)	Flow (gpm)	Water Elevation <sup>7</sup> (ft amsl)	Flow (gpm)	Water Elevation <sup>7</sup> (ft amsl)	Flow (gpm)	Water Elevation <sup>7</sup> (ft amsl)	Flow (gpm)	Water Elevation <sup>7</sup> (ft amsl)	Flow (gpm)	Water Elevation <sup>7</sup> (ft amsl)	Flow (gpm)	Water Elevation <sup>7</sup> (ft amsl)	Flow (gpm)	Water Elevation <sup>7</sup> (ft amsl)							
11/01/15	217	0	NA	55	NA	48	NA	16	NA	71	NA	30	NA	59	NA	4	NA							
11/2/2015 <sup>4</sup>	133	0	NA	17	NA	3	NA	1	NA	32	NA	8	NA	60	NA	5	NA							
11/03/15	348	0	NA	55	NA	48	NA	14	NA	71	NA	17	NA	80	NA	4	NA							
11/04/15	192	0	NA	55	NA	48	NA	13	NA	71	NA	27	NA	80	NA	4	NA							
11/05/15	128	0	NA	55	NA	48	NA	9	NA	75	NA	27	NA	80	NA	4	NA							
11/06/15	251	0	NA	55	NA	48	NA	19	NA	75	NA	24	NA	80	NA	1	NA							
11/07/15	249	0	NA	55	NA	55	NA	19	NA	75	NA	23	NA	80	NA	3	NA							
11/08/15	248	0	NA	55	NA	55	NA	19	NA	75	NA	24	NA	80	NA	4	NA							
11/09/15	117	0	NA	55	NA	55	NA	19	NA	75	NA	24	NA	77	NA	5	NA							
11/10/15	148	0	NA	55	NA	55	NA	19	NA	75	NA	24	NA	80	NA	4	NA							
11/11/15	147	0	NA	55	NA	55	NA	19	NA	75	NA	28	NA	80	NA	4	NA							
11/12/15	219	0	NA	55	NA	50	NA	19	NA	75	NA	30	NA	79	NA	5	NA							
11/13/15	190	0	NA	55	NA	50	NA	19	NA	75	NA	30	NA	79	NA	4	NA							
11/14/15	184	0	NA	55	NA	49	NA	16	NA	71	NA	30	NA	79	NA	5	NA							
11/15/15	197	0	NA	60	NA	49	NA	16	NA	71	NA	35	NA	79	NA	4	NA							
11/16/15	188	0	1606.3	60	1605.9	49	1591.3	18	1585.6	71	1582.9	29	1586.9	79	1604.1	4	1584.7							
11/17/15	179	0	1593.7	60	1593.6	49	1586.1	18	1585.8	71	1582.7	29	1586.8	79	1586.4	4	1584.1							
11/18/15	172	0	1593.5	60	1593.3	49	1583.3	18	1585.8	71	1582.7	30	1586.7	79	1586.1	4	1583.8							
11/19/15	182	0	1593.3	60	1592.9	48	1591.1	18	1585.8	71	1582.8	31	1587.2	79	1589.1	4	1583.8							
11/20/15	186	0	1593.1	60	1592.9	44	1588.8	16	1585.7	71	1578.6	29	1586.1	79	1584.9	4	1584.0							
11/21/15	190	0	NA	60	NA	44	NA	16	NA	71	NA	29	NA	76	NA	4	NA							
11/22/15	185	0	NA	55	NA	48	NA	16	NA	71	NA	25	NA	76	NA	4	NA							
11/23/15	184	0	NA	55	NA	48	NA	18	NA	71	NA	25	NA	76	NA	4	NA							
11/24/15	185	0	NA	55	NA	43	NA	14	NA	71	NA	30	NA	76	NA	4	NA							
11/25/15	183	0	NA	55	NA	52	NA	11	NA	71	NA	36	NA	76	NA	4	NA							
11/26/15	182	0	NA	55	NA	52	NA	9	NA	71	NA	26	NA	76	NA	4	NA							
11/27/15	183	0	1592.4	55	1591.8	48	1587.9	15	1585.7	71	1577.1	30	1584.8	76	1584.1	4	1584.1							
11/28/15	185	0	1592.3	55	1591.7	48	1587.9	18	1585.7	71	1577.0	30	1584.6	73	1584.0	4	1584.5							
11/29/15	185	0	1592.5	55	1592.3	48	1588.0	18	1585.7	71	1576.9	27	1584.3	74	1584.2	4	1583.8							
11/30/15	185	0	1592.3	55	1592.0	48	1587.9	17	1585.7	71	1576.8	27	1583.9	65	1583.9	4	1583.9							
Monthly Average	191	0	1594.4	55	1594.0	48	1588.0	16	1585.7	71	1579.7	27	1585.7	76	1587.4	4	1584.1							
Analytical <sup>1</sup>	Conc (mg/L)		Date	Conc (mg/L)		Date	Conc (mg/L)		Date	Conc (mg/L) <sup>6</sup>		Date	Conc (mg/L)		Date	Conc (mg/L)		Date						
Perchlorate	15		11/4/2015	31		11/2/2015	240		11/2/2015	230		11/2/2015	190		11/2/2015	140		11/2/2015	230		11/2/2015			
Hexavalent Chromium	Future Metric - Enhanced Operations (to be collected by ETI) <sup>3</sup>																							
Total Chromium <sup>4</sup>	0.11		11/4/2015	0.0079		11/2/2015	0.3		11/2/2015	0.37		11/2/2015	0.71		11/2/2015	0.79		11/2/2015	0.12		11/2/2015	0.32		11/2/2015

Notes:  
 Flow reported as gpm is a daily average calculated from the totalizer reading. NA = Not Available.  
 1: Analytical results are reported from TestAmerica.  
 2: Quarterly results, most recent sampling concentrations listed (Samples will be transitioned to monthly reporting in the future).  
 3: Following contractual amendment agreements, ETI will begin collecting monthly hexavalent chromium samples.  
 4: Flows reading artificially low due to starts and stops associated with construction of the Enhanced Metrics Project.  
 5: Due to flowmeter replacement, Enhanced Metrics construction activities, and calibration, LS3 flows during the month of November were estimated or adjusted to compensate for falsely high or falsely low totalizer outputs.  
 6: Concentrations reported for ART-9.  
 7: Water elevation readings automatically collected at midnight are available beginning November 16, 2015. Water elevation results are unavailable November 21 – 26 due to system shutdown. Water elevation data may be revised as the shutdown calibration phase is completed.

Table 3 - Interceptor Well Field (IWF) Operational Metrics

Nevada Environmental Response Trust   Groundwater Extraction and Treatment System   Enhanced Operational Metrics																				
Date	I-AR		I-AA		I-AB		I-AC		I-AD		I-B		I-C		I-D		I-E		I-F	
	Flow <sup>1</sup> (gpm)	Water Elevation <sup>6</sup> (ft amsl)	Flow <sup>1</sup> (gpm)	Water Elevation <sup>6</sup> (ft amsl)	Flow <sup>1</sup> (gpm)	Water Elevation <sup>6</sup> (ft amsl)	Flow <sup>1</sup> (gpm)	Water Elevation <sup>6</sup> (ft amsl)	Flow <sup>1</sup> (gpm)	Water Elevation <sup>6</sup> (ft amsl)	Flow <sup>1</sup> (gpm)	Water Elevation <sup>6</sup> (ft amsl)	Flow <sup>1</sup> (gpm)	Water Elevation <sup>6</sup> (ft amsl)	Flow <sup>1</sup> (gpm)	Water Elevation <sup>6</sup> (ft amsl)	Flow <sup>1</sup> (gpm)	Water Elevation <sup>6</sup> (ft amsl)	Flow <sup>1</sup> (gpm)	Water Elevation <sup>6</sup> (ft amsl)
11/01/15	0.69	NA	1.32	NA	0.00	NA	0.00	NA	0.00	NA	0.76	NA	3.44	NA	0.83	NA	0.18	NA	4.04	NA
11/02/15	0.69	NA	1.32	NA	0.00	NA	0.00	NA	0.00	NA	0.77	NA	3.44	NA	1.28	NA	0.00	NA	4.01	NA
11/03/15	0.69	NA	1.01	NA	0.00	NA	0.00	NA	0.00	NA	0.69	NA	2.48	NA	1.40	NA	0.49	NA	4.00	NA
11/04/15	0.69	NA	1.02	NA	0.00	NA	0.00	NA	0.00	NA	0.71	NA	3.07	NA	1.08	NA	0.43	NA	0.98	NA
11/05/15	0.69	NA	1.01	NA	0.00	NA	0.00	NA	0.00	NA	0.00	NA	2.86	NA	1.04	NA	0.39	NA	3.62	NA
11/06/15	0.69	NA	1.03	NA	0.00	NA	0.00	NA	0.00	NA	0.61	NA	2.78	NA	1.29	NA	0.37	NA	3.56	NA
11/07/15	0.69	NA	1.41	NA	0.00	NA	0.00	NA	0.00	NA	0.86	NA	3.71	NA	1.74	NA	0.50	NA	3.49	NA
11/08/15	0.69	NA	1.20	NA	0.00	NA	0.00	NA	0.00	NA	0.72	NA	3.09	NA	1.44	NA	0.40	NA	3.39	NA
11/09/15	0.69	NA	0.55	NA	0.00	NA	0.00	NA	0.00	NA	0.33	NA	1.41	NA	0.65	NA	0.18	NA	3.29	NA
11/10/15	0.69	NA	1.03	NA	0.00	NA	0.00	NA	0.00	NA	0.61	NA	2.64	NA	1.21	NA	0.34	NA	3.19	NA
11/11/15	0.33	NA	1.03	NA	0.00	NA	0.00	NA	0.00	NA	0.61	NA	2.57	NA	1.15	NA	0.32	NA	3.08	NA
11/12/15	0.56	NA	1.03	NA	0.00	NA	0.00	NA	0.00	NA	0.62	NA	2.44	NA	1.14	NA	0.30	NA	3.37	NA
11/13/15	0.55	NA	0.83	NA	0.00	NA	0.00	NA	0.00	NA	0.62	NA	0.89	NA	1.12	NA	0.13	NA	4.03	NA
11/14/15	1.01	NA	1.60	NA	0.00	NA	0.00	NA	0.00	NA	1.16	NA	1.61	NA	1.99	NA	0.30	NA	7.48	NA
11/15/15	0.34	NA	0.53	NA	0.00	NA	0.00	NA	0.00	NA	0.38	NA	0.53	NA	0.37	NA	0.11	NA	2.46	NA
11/16/15	0.60	1716.0	0.94	1716.4	0.00	1725.9	0.00	1729.3	0.00	1710.4	0.62	1710.4	1.73	1726.6	1.09	1730.4	0.24	1721.4	3.84	1725.3
11/17/15	0.58	1716.1	1.00	1719.0	0.00	1720.9	0.00	1723.3	0.00	1712.9	0.66	1715.2	1.77	1723.0	1.15	1722.1	0.25	1716.7	3.92	1719.4
11/18/15	0.57	1716.1	0.99	1718.5	0.00	1721.2	0.00	1723.5	0.00	1724.9	0.68	1709.9	1.65	1723.0	1.14	1722.1	0.23	1716.7	4.03	1719.4
11/19/15	0.60	1715.3	0.99	1718.2	0.00	1721.1	0.00	1723.5	0.00	1725.0	0.68	1709.4	1.52	1723.2	1.14	1722.4	0.22	1716.8	4.16	1719.2
11/20/15	0.56	1715.4	0.43	1720.0	0.00	1720.0	0.00	1725.2	0.00	1725.0	0.67	1710.2	0.01	1723.3	3.59	1722.7	0.21	1717.0	3.89	1719.4
11/21/15	0.56	NA	0.43	NA	0.00	NA	0.00	NA	0.00	NA	0.67	NA	0.01	NA	3.58	NA	0.22	NA	3.96	NA
11/22/15	0.56	NA	0.43	NA	0.00	NA	0.00	NA	0.00	NA	0.67	NA	0.01	NA	3.59	NA	0.21	NA	3.82	NA
11/23/15	0.54	NA	0.42	NA	0.00	NA	0.00	NA	0.00	NA	0.67	NA	0.52	NA	2.88	NA	0.23	NA	3.39	NA
11/24/15	0.60	NA	0.44	NA	0.00	NA	0.00	NA	0.00	NA	0.69	NA	0.97	NA	2.93	NA	0.22	NA	3.52	NA
11/25/15	0.65	NA	0.43	NA	0.00	NA	0.00	NA	0.00	NA	0.65	NA	0.96	NA	2.93	NA	0.22	NA	4.19	NA
11/26/15	0.54	NA	0.33	NA	0.00	NA	0.00	NA	0.00	NA	0.65	NA	0.89	NA	2.93	NA	0.22	NA	4.69	NA
11/27/15	0.51	1715.4	0.34	1718.2	0.00	1721.2	0.00	1723.7	0.00	1725.2	0.64	1709.4	0.73	1723.7	2.93	1723.2	0.22	1717.5	4.69	1719.8
11/28/15	0.52	1715.3	0.34	1718.2	0.00	1721.2	0.00	1723.7	0.00	1725.2	0.63	1709.4	0.70	1723.7	2.93	1723.2	0.22	1717.6	4.69	1719.9
11/29/15	0.52	1715.3	0.33	1718.2	0.00	1721.2	0.00	1723.7	0.00	1725.2	0.66	1709.3	0.57	1723.7	2.93	1723.3	0.22	1717.6	4.69	1720.0
11/30/15	0.52	1715.3	1.10	1718.2	0.00	1721.2	0.00	1723.7	0.00	1725.2	0.61	1709.6	4.23	1723.8	1.56	1723.3	0.22	1717.7	4.68	1720.1
Monthly Average	0.60	1715.6	0.83	1718.3	0.00	1721.5	0.00	1724.4	0.00	1722.1	0.64	1710.3	1.77	1723.8	1.83	1723.6	0.26	1717.7	3.87	1720.3
Analytical <sup>1</sup>	Conc (mg/L)	Date	Conc (mg/L)	Date	Conc (mg/L)	Date	Conc (mg/L)	Date	Conc (mg/L)	Date	Conc (mg/L)	Date	Conc (mg/L)	Date	Conc (mg/L)	Date	Conc (mg/L)	Date	Conc (mg/L)	Date
Perchlorate <sup>2</sup>	2200	11/6/2015	170	11/2/2015	380	11/2/2015	NA <sup>5</sup>	NA <sup>5</sup>	140	11/10/2015	580	11/2/2015	830	11/5/2015	630	11/2/2015	770	11/2/2015	1100	11/2/2015
Hexavalent Chromium	Future Metric - Enhanced Operations (to be collected by ETI) <sup>3</sup>																			
Total Chromium <sup>4</sup>	0.13	11/6/2015	0.055	11/2/2015	0.038	11/2/2015	NA <sup>5</sup>	NA <sup>5</sup>	0.98	11/10/2015	0.17	11/2/2015	3	11/5/2015	4.7	11/2/2015	7.8	11/2/2015	15	11/2/2015

Notes:  
 1: Flow reported as gpm is a daily average calculated from the totalizer reading. NA=Not Available.  
 2: Analytical results are reported from TestAmerica.  
 3: Quarterly results, most recent sampling concentrations listed (Samples will be transitioned to monthly reporting in the future).  
 4: Following contractual amendment agreements, ETI will begin collecting monthly hexavalent chromium samples.  
 5: New flow meters were installed and wells were undergoing calibration throughout the month. Due to Enhanced Metrics activities, IWF flows during the month of November were estimated or adjusted to compensate for falsely high or falsely low totalizer outputs.  
 6: NA= Not Available. Well I-AC was dry and no sample could be collected.  
 7: Water elevation readings automatically collected at midnight are available beginning November 16, 2015. Water elevation results are unavailable November 21 – 26 due to system shakedown. Water elevation data may be revised as the shakedown calibration phase is completed.

Table 3 - Interceptor Well Field (IWF) Operational Metrics

Nevada Environmental Response Trust   Groundwater Extraction and Treatment System   Enhanced Operational Metrics																				
Date	I-G		I-H		I-I		I-J		I-K		I-L		I-M		I-N		I-O		I-P	
	Flow <sup>4</sup> (gpm)	water Elevation <sup>6</sup> (ft amsl)	Flow <sup>4</sup> (gpm)	water Elevation <sup>6</sup> (ft amsl)	Flow <sup>4</sup> (gpm)	water Elevation <sup>6</sup> (ft amsl)	Flow <sup>4</sup> (gpm)	water Elevation <sup>6</sup> (ft amsl)	Flow <sup>4</sup> (gpm)	water Elevation <sup>6</sup> (ft amsl)	Flow <sup>4</sup> (gpm)	water Elevation <sup>6</sup> (ft amsl)	Flow <sup>4</sup> (gpm)	water Elevation <sup>6</sup> (ft amsl)	Flow <sup>4</sup> (gpm)	water Elevation <sup>6</sup> (ft amsl)	Flow <sup>4</sup> (gpm)	water Elevation <sup>6</sup> (ft amsl)	Flow <sup>4</sup> (gpm)	water Elevation <sup>6</sup> (ft amsl)
11/01/15	0.22	NA	1.13	NA	4.92	NA	6.50	NA	4.14	NA	1.50	NA	2.20	NA	2.77	NA	0.94	NA	2.59	NA
11/02/15	0.22	NA	0.99	NA	4.94	NA	6.50	NA	4.15	NA	1.35	NA	1.99	NA	2.69	NA	0.92	NA	2.62	NA
11/03/15	0.16	NA	0.70	NA	3.16	NA	6.50	NA	3.98	NA	1.65	NA	1.61	NA	2.62	NA	0.75	NA	2.00	NA
11/04/15	0.20	NA	0.80	NA	3.69	NA	5.88	NA	3.71	NA	1.51	NA	2.10	NA	2.58	NA	1.03	NA	2.23	NA
11/05/15	0.21	NA	0.85	NA	3.99	NA	6.25	NA	3.84	NA	1.06	NA	2.10	NA	4.60	NA	0.77	NA	2.38	NA
11/06/15	0.21	NA	0.85	NA	4.05	NA	6.30	NA	3.83	NA	1.08	NA	1.39	NA	0.41	NA	0.76	NA	2.36	NA
11/07/15	0.20	NA	1.15	NA	5.64	NA	8.68	NA	5.23	NA	1.50	NA	1.90	NA	3.46	NA	1.06	NA	3.22	NA
11/08/15	0.20	NA	1.03	NA	5.10	NA	7.74	NA	4.66	NA	1.27	NA	1.59	NA	2.84	NA	0.97	NA	2.88	NA
11/09/15	0.20	NA	0.44	NA	2.23	NA	3.34	NA	1.99	NA	0.58	NA	0.72	NA	1.26	NA	0.41	NA	1.22	NA
11/10/15	0.20	NA	0.83	NA	4.28	NA	6.38	NA	3.78	NA	1.09	NA	1.37	NA	2.35	NA	0.79	NA	2.30	NA
11/11/15	0.20	NA	0.79	NA	3.98	NA	5.90	NA	3.25	NA	1.11	NA	1.34	NA	2.30	NA	0.76	NA	2.21	NA
11/12/15	0.20	NA	0.62	NA	4.06	NA	6.24	NA	3.25	NA	1.12	NA	1.32	NA	2.35	NA	0.79	NA	2.27	NA
11/13/15	0.20	NA	0.52	NA	4.07	NA	6.21	NA	0.00	NA	0.97	NA	1.04	NA	2.10	NA	0.78	NA	2.25	NA
11/14/15	0.20	NA	0.95	NA	7.59	NA	6.35	NA	0.00	NA	1.83	NA	1.92	NA	3.88	NA	1.45	NA	4.16	NA
11/15/15	0.20	NA	0.31	NA	2.53	NA	3.80	NA	0.00	NA	0.61	NA	0.62	NA	1.26	NA	0.08	NA	1.38	NA
11/16/15	0.20	1724.4	0.64	1727.3	4.11	1723.4	5.46	1712.7	1.75	1706.0	1.04	1724.4	1.19	1725.9	2.22	1730.7	0.72	1710.0	2.26	1712.3
11/17/15	0.20	1720.2	0.67	1721.0	4.37	1722.2	5.76	1720.8	1.72	1720.4	1.11	1722.0	1.26	1722.1	2.35	1725.7	0.77	1721.2	2.40	1720.8
11/18/15	0.20	1711.4	0.64	1721.2	4.39	1722.0	5.67	1707.1	1.42	1717.3	1.11	1721.6	1.24	1722.1	2.35	1725.7	0.76	1721.4	2.42	1709.8
11/19/15	0.20	1710.8	0.62	1721.3	4.44	1723.1	5.64	1707.1	1.16	1717.6	1.11	1721.4	1.23	1722.2	2.36	1725.8	0.76	1710.0	2.45	1709.8
11/20/15	0.25	1713.1	0.62	1720.6	4.50	1725.2	4.08	1706.6	2.45	1719.9	0.87	1720.0	0.62	1722.5	1.17	1726.1	0.73	1709.4	2.91	1716.9
11/21/15	0.25	NA	0.26	NA	4.56	NA	4.08	NA	2.45	NA	0.87	NA	0.61	NA	1.17	NA	0.73	NA	2.91	NA
11/22/15	0.25	NA	0.26	NA	4.13	NA	4.08	NA	2.45	NA	0.87	NA	0.62	NA	1.17	NA	0.73	NA	2.91	NA
11/23/15	0.22	NA	0.54	NA	4.36	NA	6.38	NA	2.27	NA	0.85	NA	0.54	NA	1.13	NA	0.85	NA	2.37	NA
11/24/15	0.22	NA	0.46	NA	4.39	NA	8.00	NA	2.34	NA	0.88	NA	0.55	NA	1.17	NA	0.89	NA	2.34	NA
11/25/15	0.18	NA	0.44	NA	4.40	NA	7.37	NA	2.34	NA	0.91	NA	0.52	NA	1.17	NA	0.88	NA	2.34	NA
11/26/15	0.16	NA	0.44	NA	4.40	NA	7.03	NA	2.34	NA	1.06	NA	0.36	NA	1.17	NA	0.72	NA	2.34	NA
11/27/15	0.17	1710.8	0.50	1721.3	4.39	1723.9	7.03	1708.4	2.34	1719.2	0.94	1721.4	0.37	1723.0	1.17	1717.8	0.59	1710.0	2.34	1719.8
11/28/15	0.17	1710.8	0.59	1721.3	4.37	1724.0	8.08	1710.5	2.35	1719.3	1.04	1721.4	0.36	1723.1	1.17	1718.6	0.59	1710.0	2.34	1720.0
11/29/15	0.20	1710.8	0.59	1721.4	4.35	1724.0	9.37	1711.2	2.34	1719.4	1.12	1721.4	0.36	1723.1	1.17	1719.2	1.01	1710.0	2.34	1720.2
11/30/15	0.25	1713.7	1.31	1721.5	4.38	1724.0	9.37	1711.6	2.34	1719.4	2.20	1721.4	6.40	1723.2	3.20	1719.5	1.86	1710.0	3.45	1720.3
Monthly Average	0.21	1713.7	0.69	1721.9	4.33	1723.5	6.33	1710.7	2.60	1717.4	1.14	1721.7	1.32	1723.0	2.05	1723.2	0.83	1712.4	2.47	1716.6
Analytical <sup>1</sup>	Conc (mg/L)	Date	Conc (mg/L)	Date	Conc (mg/L)	Date	Conc (mg/L)	Date	Conc (mg/L)	Date	Conc (mg/L)	Date	Conc (mg/L)	Date	Conc (mg/L)	Date	Conc (mg/L)	Date	Conc (mg/L)	Date
Perchlorate <sup>2</sup>	2000	11/2/2015	2000	11/2/2015	910	11/6/2015	340	11/6/2015	260	11/6/2015	970	11/2/2015	1000	11/2/2015	960	11/2/2015	1200	11/2/2015	1300	11/2/2015
Hexavalent Chromium	Future Metric - Enhanced Operations (to be collected by ETI) <sup>3</sup>																			
Total Chromium <sup>2</sup>	22	11/2/2015	22	11/2/2015	12	11/6/2015	3.5	11/6/2015	2	11/6/2015	0.53	11/2/2015	7.3	11/2/2015	8.9	11/2/2015	18	11/2/2015	18	11/2/2015

Notes:  
 Flow reported as gpm is a daily average calculated from the totalizer reading. NA=Not Available.  
 1: Analytical results are reported from TestAmerica.  
 2: Quarterly results, most recent sampling concentrations listed (Samples will be transitioned to monthly reporting in the future).  
 3: Following contractual amendment agreements, ETI will begin collecting monthly hexavalent chromium samples.  
 4: New flow meters were installed and wells were undergoing calibration throughout the month. Due to Enhanced Metrics activities, IWF flows during the month of November were estimated or adjusted to compensate for falsely high or falsely low totalizer outputs.  
 6: Water elevation readings automatically collected at midnight are available beginning November 16, 2015. Water elevation results are unavailable November 21 – 26 due to system shakedown. Water elevation data may be revised as the shakedown calibration phase is completed.

Nevada Environmental Response Trust   Groundwater Extraction and Treatment System   Enhanced Operational Metrics																				
Date	I-Q		I-R		I-S		I-T		I-U		I-V		I-W		I-X		I-Z			
	Flow <sup>4</sup> (gpm)	Water Elevation <sup>6</sup> (ft amsl)	Flow <sup>4</sup> (gpm)	Water Elevation <sup>6</sup> (ft amsl)	Flow <sup>4</sup> (gpm)	Water Elevation <sup>6</sup> (ft amsl)	Flow <sup>4</sup> (gpm)	Water Elevation <sup>6</sup> (ft amsl)	Flow <sup>4</sup> (gpm)	Water Elevation <sup>6</sup> (ft amsl)	Flow <sup>4</sup> (gpm)	Water Elevation <sup>6</sup> (ft amsl)	Flow <sup>4</sup> (gpm)	Water Elevation <sup>6</sup> (ft amsl)	Flow <sup>4</sup> (gpm)	Water Elevation <sup>6</sup> (ft amsl)	Flow <sup>4</sup> (gpm)	Water Elevation <sup>6</sup> (ft amsl)		
11/01/15	0.42	NA	0.38	NA	4.21	NA	0.28	NA	0.81	NA	4.56	NA	0.56	NA	2.06	NA	1.31	NA	7.41	NA
11/02/15	0.42	NA	0.38	NA	4.15	NA	0.15	NA	0.81	NA	4.56	NA	0.56	NA	2.06	NA	1.31	NA	7.33	NA
11/03/15	0.41	NA	1.88	NA	3.83	NA	0.27	NA	0.63	NA	4.56	NA	0.56	NA	2.73	NA	0.79	NA	5.60	NA
11/04/15	0.42	NA	2.15	NA	3.48	NA	0.26	NA	0.73	NA	4.13	NA	0.56	NA	2.15	NA	0.95	NA	6.50	NA
11/05/15	0.42	NA	2.12	NA	0.00	NA	0.22	NA	0.80	NA	3.07	NA	0.56	NA	2.16	NA	0.94	NA	7.07	NA
11/06/15	0.42	NA	2.14	NA	0.00	NA	0.22	NA	0.80	NA	3.81	NA	0.56	NA	2.17	NA	0.85	NA	7.17	NA
11/07/15	0.42	NA	2.93	NA	4.70	NA	0.31	NA	1.11	NA	5.27	NA	0.56	NA	2.18	NA	1.25	NA	9.73	NA
11/08/15	0.42	NA	2.46	NA	3.95	NA	0.28	NA	1.00	NA	4.71	NA	0.56	NA	2.20	NA	1.02	NA	8.69	NA
11/09/15	0.42	NA	1.12	NA	1.81	NA	0.12	NA	0.43	NA	2.04	NA	0.56	NA	2.21	NA	0.47	NA	3.77	NA
11/10/15	0.42	NA	2.11	NA	3.41	NA	0.23	NA	0.81	NA	3.90	NA	0.56	NA	2.23	NA	0.89	NA	7.22	NA
11/11/15	0.42	NA	2.10	NA	3.38	NA	0.23	NA	0.78	NA	3.60	NA	0.56	NA	4.53	NA	0.88	NA	6.67	NA
11/12/15	0.42	NA	2.15	NA	3.49	NA	0.07	NA	2.34	NA	3.76	NA	0.56	NA	0.97	NA	0.84	NA	7.06	NA
11/13/15	0.42	NA	2.16	NA	3.59	NA	0.21	NA	1.04	NA	3.76	NA	0.25	NA	2.36	NA	0.81	NA	7.02	NA
11/14/15	0.42	NA	4.04	NA	6.89	NA	0.21	NA	1.52	NA	6.96	NA	0.57	NA	2.38	NA	1.49	NA	7.16	NA
11/15/15	0.42	NA	1.32	NA	2.30	NA	0.11	NA	0.50	NA	2.30	NA	0.20	NA	2.41	NA	0.49	NA	4.31	NA
11/16/15	0.42	1710.0	2.14	1709.5	3.55	1710.0	0.17	1720.3	1.06	1707.9	3.76	1723.0	0.46	1724.1	2.44	1733.0	0.84	1725.6	6.17	1712.5
11/17/15	0.42	1710.0	2.29	1720.0	3.80	1722.3	0.17	1711.5	1.15	1712.6	4.00	1721.4	0.45	1721.2	2.48	1720.3	0.89	1721.4	6.52	1721.3
11/18/15	0.42	1710.0	2.31	1708.7	3.86	1710.0	0.17	1712.3	1.20	1707.3	4.02	1720.0	0.44	1721.3	2.51	1720.3	0.89	1719.5	6.42	1715.5
11/19/15	0.42	1711.9	2.35	1709.6	3.93	1710.0	0.16	1717.4	1.26	1707.4	4.08	1720.3	0.42	1721.4	2.22	1720.9	0.89	1719.5	6.38	1722.6
11/20/15	0.42	1712.5	2.26	1710.2	4.51	1710.2	0.17	1716.9	0.84	1705.7	3.57	1721.5	0.10	1720.6	2.40	1720.5	0.58	1720.0	6.28	1721.5
11/21/15	0.42	NA	2.26	NA	4.51	NA	0.17	NA	0.84	NA	3.57	NA	0.10	NA	2.46	NA	0.58	NA	6.18	NA
11/22/15	0.42	NA	2.26	NA	4.51	NA	0.16	NA	0.84	NA	3.57	NA	0.10	NA	2.46	NA	0.58	NA	6.04	NA
11/23/15	0.42	NA	2.21	NA	4.55	NA	0.17	NA	0.83	NA	3.40	NA	0.01	NA	4.31	NA	0.56	NA	6.28	NA
11/24/15	0.42	NA	2.22	NA	4.69	NA	0.17	NA	0.85	NA	3.52	NA	0.23	NA	2.66	NA	0.57	NA	6.30	NA
11/25/15	0.42	NA	2.20	NA	4.69	NA	0.16	NA	0.83	NA	3.84	NA	0.20	NA	2.69	NA	0.59	NA	6.27	NA
11/26/15	0.42	NA	2.22	NA	4.69	NA	0.16	NA	0.87	NA	4.69	NA	0.16	NA	2.71	NA	0.57	NA	6.25	NA
11/27/15	0.42	1712.2	2.22	1709.5	4.69	1710.0	0.17	1713.2	0.88	1707.2	4.69	1721.3	0.13	1722.2	2.74	1721.5	0.58	1720.3	6.23	1723.5
11/28/15	0.42	1712.1	2.22	1709.4	4.69	1710.0	0.16	1713.1	0.88	1707.2	4.69	1721.4	0.13	1722.2	2.80	1721.5	0.51	1720.2	6.22	1723.6
11/29/15	0.42	1711.5	2.51	1708.8	4.69	1710.0	0.16	1713.0	0.89	1707.2	4.69	1721.5	0.14	1722.2	2.85	1721.6	0.63	1720.1	6.23	1723.6
11/30/15	0.42	1711.5	2.56	1709.4	4.69	1710.0	0.17	1713.0	0.88	1707.3	4.69	1721.5	0.14	1722.3	2.90	1721.7	1.41	1720.2	6.25	1723.6
Monthly Average	0.42	1711.3	2.12	1710.6	3.84	1711.4	0.19	1714.5	0.94	1707.8	4.06	1721.3	0.36	1721.9	2.51	1722.4	0.83	1720.7	6.56	1720.9
Analytical <sup>1</sup>	Conc (mg/L)	Date	Conc (mg/L)	Date	Conc (mg/L)	Date	Conc (mg/L)	Date	Conc (mg/L)	Date	Conc (mg/L)	Date	Conc (mg/L)	Date	Conc (mg/L)	Date	Conc (mg/L)	Date	Conc (mg/L)	Date
Perchlorate <sup>2</sup>	1500	11/18/2015	1500	11/2/2015	750	11/2/2015	2100	11/5/2015	2200	11/2/2015	1200	11/6/2015	1300	11/16/2015	1300	11/16/2015	1600	11/2/2015	440	11/6/2015
Hexavalent Chromium	Future Metric - Enhanced Operations (to be collected by ETI) <sup>3</sup>																			
Total Chromium <sup>2</sup>	20	11/18/2015	0.34	11/2/2015	1.1	11/2/2015	23	11/5/2015	22	11/2/2015	13	11/6/2015	19	11/16/2015	12	11/16/2015	0.47	11/2/2015	8.3	11/6/2015

Notes:  
 Flow reported as gpm is a daily average calculated from the totalizer reading. NA = Not Available  
 1: Analytical results are reported from TestAmerica.  
 2: Quarterly results, most recent sampling concentrations listed (Samples will be transitioned to monthly reporting in the future).  
 3: Following contractual amendment agreements, ETI will begin collecting monthly hexavalent chromium samples.  
 4: New flow meters were installed and wells were undergoing calibration throughout the month. Due to Enhanced Metrics activities, IWF flows during the month of November were estimated or adjusted to compensate for falsely high or falsely low totalizer outputs.  
 6: Water elevation readings automatically collected at midnight are available beginning November 16, 2015. Water elevation results are unavailable November 21 – 26 due to system shutdown. Water elevation data may be revised as the shutdown calibration phase is completed.

Nevada Environmental Response Trust   Groundwater Extraction and Treatment System   Enhanced Operational Metrics																	
Date	LS #2	GWTP Effluent				GW-11 Influent <sup>2</sup>				FBR Plant Influent <sup>1</sup>							
	Flow <sup>3</sup> (gpm)	Flow (gpm)	TA - Cr (TR) (mg/L)	TA - Cr (VI) (mg/L)	TA - ClO <sub>2</sub> (mg/L)	Flow (gpm)	Cr (TR) (mg/L)	Cr (VI) (mg/L)	ClO <sub>2</sub> (mg/L)	Flow (gpm)	TA - ClO <sub>4</sub> (mg/L)	ETI - ClO <sub>4</sub> (mg/L)	TA - ClO <sub>3</sub> (mg/L)	TA - SO <sub>4</sub> (mg/L)	TA - NO <sub>3</sub> - N (mg/L)	TA-Cr (TR) (mg/L)	TA-Cr (VI) (mg/L)
11/01/15	750	69				58				892		71					
11/02/15	754	69				61				871		73	140	1,600	6	0.032	0.004
11/03/15	755	69				67				889		71					
11/04/15	937	69				67				886		67					
11/05/15	389	69	0.17	ND	720	62				888		66					
11/06/15	722	69				62				887		72					
11/07/15	718	69				61				886	70	77					
11/08/15	718	69				62				885		70					
11/09/15	713	69				60				882		74		7	0.019	0.008	
11/10/15	713	69				61				885		71					
11/11/15	708	69				62				891		71					
11/12/15	702	58	0.18	ND	730	59				890		70					
11/13/15	673	65				57				891		73					
11/14/15	708	63				57				892	85	71					
11/15/15	707	61				56				886		71					
11/16/15	705	60				41				883		69		7	0.044	0.008	
11/17/15	704	64				32				888		71					
11/18/15	702	65				39				889		73					
11/19/15	701	45	0.42	ND	840	39				909		74					
11/20/15	700	45				39				891		70					
11/21/15	700	50				40				938	86	63					
11/22/15	703	67				39				939		71					
11/23/15	703	63				38				941		73		7	0.028	0.019	
11/24/15	702	65				39				940		72					
11/25/15	702	64				40				934		62					
11/26/15	702	58	0.17	ND	930	41				936		70					
11/27/15	702	59				41				939		64					
11/28/15	702	62				41				932	88	51					
11/29/15	702	62				41				930		68					
11/30/15	702	60				70				929		64		7	0.040	0.025	
Monthly Average	707	63	0.24	ND	805	51				904	82	69	140	1600	7	0.033	0.013

Notes:

Flow reported as gpm is a daily average calculated from the totalizer reading.

ND = Not detected above laboratory method detection limit (ClO<sub>2</sub> = 0.5 ug/L; ClO<sub>3</sub> = 10 ug/L; NO<sub>3</sub>-N = 0.055 mg/L, CR(VI) = 0.25 ug/L); NA = Not Available, sample result not reported.

1: ETI = Envirogen internal process control data, TA = TestAmerica data.

2: Following contractual amendment agreements, ETI will begin collecting monthly analytical samples at the GW-11 influent sample tap.

3: Due to flowmeter replacement, tie-in activities, and calibration, LS2 flows during the month of November were estimated or adjusted to compensate for falsely high or falsely low totalizer outputs.

Table 4 - Treatment Plant Operational Metrics

Nevada Environmental Response Trust   Groundwater Extraction and Treatment System   Enhanced Operational Metrics															
Date	1st Stage FBR Influent			2nd Stage FBR Influent			FBR Plant Effluent <sup>1</sup>								
	Flow (gpm)	pH (s.u.)	ORP (mV)	Flow (gpm)	pH (s.u.)	ORP (mV)	Flow (gpm)	TA - ClO <sub>4</sub> (mg/L)	ETI - ClO <sub>4</sub> (mg/L)	TA - ClO <sub>3</sub> (mg/L)	TA-Cr (TR) (mg/L)	TA-Cr (VI) (mg/L)	TA - SO <sub>4</sub> (mg/L)	TA - NO <sub>3</sub> - N (mg/L)	ETI - Turbidity (NTU)
11/01/15	889	7.2	-401	853	7.49	-351	937		ND					10	
11/02/15	892	7.3	-403	687	7.46	-352	886		ND	0.031	ND	ND	1,500	ND	15
11/03/15	910	7.3	-403	790	7.49	-253	911		ND						12
11/04/15	880	7.3	-337	869	7.56	-349	868		ND						17
11/05/15	892	7.4	-395	873	7.57	-359	900		ND						3
11/06/15	900	7.4	-398	871	7.61	-376	905		ND						20
11/07/15	911	7.4	-400	870	7.82	-376	906	ND	ND						16
11/08/15	952	7.4	-400	868	7.84	-375	899		ND						11
11/09/15	915	7.4	-401	866	7.59	-389	840		ND		ND	ND		ND	15
11/10/15	828	7.4	-340	815	7.65	-383	865		ND						12
11/11/15	907	7.5	-367	882	7.64	-409	908		ND						13
11/12/15	914	7.5	-385	879	7.6	-421	922		ND						14
11/13/15	910	7.5	-389	884	7.6	-429	914		ND						10
11/14/15	911	7.5	-394	882	7.6	-432	924	ND	ND						12
11/15/15	911	7.5	-397	870	7.6	-435	909		ND						10
11/16/15	959	7.6	-400	202	8.1	-418	875		ND		ND	ND		ND	10
11/17/15	893	7.5	-400	880	7.9	-407	946		ND						12
11/18/15	897	7.5	-387	876	7.8	-412	951		ND						15
11/19/15	678	7.5	-390	878	7.7	-413	999		ND						14
11/20/15	868	7.5	-395	862	7.7	-408	912		ND						10
11/21/15	866	7.5	-390	871	7.7	-405	983	ND	ND						13
11/22/15	959	7.5	-394	866	7.8	-403	981		ND						16
11/23/15	966	7.5	-389	866	7.7	-406	978		ND		0.013	ND		0.8	10
11/24/15	965	7.4	-389	846	7.7	-407	957		ND						11
11/25/15	963	7.5	-388	859	7.7	-410	957		ND						12
11/26/15	945	7.5	-390	858	7.8	-410	972		ND						13
11/27/15	961	7.6	-390	859	7.8	-410	970		ND						18
11/28/15	961	7.5	-389	855	7.8	-410	965	ND	ND						17
11/29/15	949	7.5	-385	849	7.7	-411	950		ND						20
11/30/15	937	7.4	-381	861	7.7	-410	931		ND		0.014	ND		ND	10
Monthly Average	910	7.4	-389	835	7.7	-394	927	ND	ND	0.031	0.014	ND	1500	0.80	13

Notes:

Flow reported as gpm is a daily average calculated from the totalizer reading.

ND = Not detected above laboratory method detection limit (ClO<sub>4</sub> = 0.5 ug/L; ClO<sub>3</sub> = 10 ug/L; NO<sub>3</sub>-N = 0.055 mg/L, CR(VI) = 0.25 ug/L).

1: ETI = Envirogen internal process control data, TA = TestAmerica data.

GW-11 Level Monitoring		
Date	Field Measurement (ft)	Volume (MG)
11/10/2015	24.9	43.3
11/25/2015	191.8	43.1

GW-11 Leak Detection Monitoring				
Date	Amount Pumped (gallons)			
	NW Corner	NE Corner	SW Corner	SE Corner
11/10/2015	0	0	266	0
11/25/2015	5	0	1159	0

GW-11 Composite Sample <sup>1</sup>		
Analytes	Concentration	Units
Perchlorate	77	mg/L
Chlorate	0.0	mg/L
Ammonia as N	0.72	mg/L
Total Phosphorus	0.67	mg/L
Total Dissolved Solids (TDS)	5800	mg/L
Total Suspended Solids (TSS)	300	mg/L
pH	7	s.u.
Calcium	290	mg/L
Iron	1.2	mg/L
Chromium (total)	0.046	mg/L
Chromium VI	ND	mg/L
Chloride	1700	mg/L
Nitrate as N	1.9	mg/L
Sulfate	1600	mg/L

## Notes:

ND = Not detected above laboratory method detection limit (NH<sub>3</sub>-N= 0.1 mg/L; Total P = .025 ug/L; CR(VI) = 0.25 ug/L).

1: Corner Composite Sample collected quarterly, most recent sampling results presented. Sampled on: October 1, 2015 by Envirogen.



Nevada Environmental Response Trust   Groundwater Extraction and Treatment System   Enhanced Operational Metrics						
Date	Flow <sup>1</sup> (gpm)	FBR Influent Concentration			Influent Function Load <sup>2</sup> (lbs/day)	6 Month Rolling Average (lbs/day)
		ClO <sub>4</sub> (mg/L)	NO <sub>3</sub> as N (mg/L)	ClO <sub>3</sub> (mg/L)		
Dec 2014	785	118	11	210	630	629
Jan 2015	844	84	7	190	541	613
Feb 2015	1021	101	7	210	738	625
Mar 2015	918	95	7	100	445	591
Apr 2015	916	97	7	140	520	570
May 2015	858	105	6	170	549	571
June 2015	824	108	6	170	532	554
July 2015	857	100	5	180	547	555
Aug 2015	891	87	6	160	516	518
Sep 2015	785	103	9	180	540	521
Oct 2015	950	86	6	180	587	542
Nov 2015	927	82	7	140	496	538

Notes:

Concentrations and flow are presented as monthly average.

1: Flow used in loading calculation is average monthly FBR effluent flow to be consistent with historical loading calculations.

2: FBR loading calculated as  $[0.9 \cdot \text{NO}_3 \text{ as N} + 0.17 \cdot \text{ClO}_3 + 0.18 \cdot \text{ClO}_4 \cdot \text{Flow} \cdot 1440 / 1000000 \cdot 8.34]$ .

Figure 1 - GW-11 Pond Volume and Perchlorate Concentration

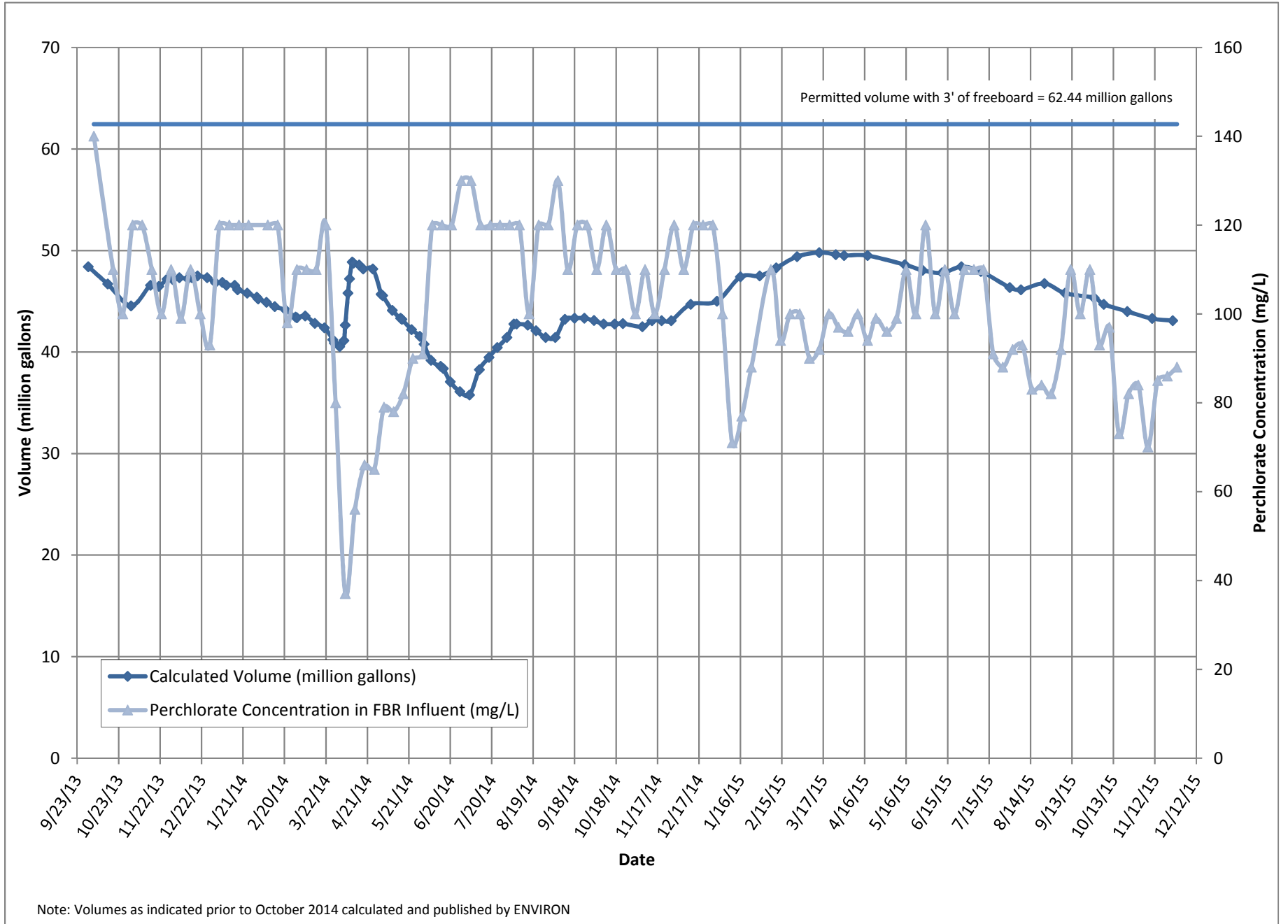


Figure 2 - FBR Equivalent Loading Calculation

