

Table 1 - Seep Well Field (SWF) Operational Metrics

Nevada Environmental Response Trust Groundwater Extraction and Treatment System Enhanced Operational Metrics																											
Date	LS #1	East Well (PC-116R)		Center Well (PC99R3)		West Well (PC-115R)		PC 117		PC 118		PC 119		PC 120		PC 121		PC 133									
	Flow (gpm)	Flow (gpm)	Water Elevation (ft amsl)	Flow (gpm)	Water Elevation (ft amsl)	Flow (gpm)	Water Elevation (ft amsl)	Flow (gpm)	Water Elevation (ft amsl)	Flow (gpm)	Water Elevation (ft amsl)	Flow (gpm)	Water Elevation (ft amsl)	Flow (gpm)	Water Elevation (ft amsl)	Flow (gpm)	Water Elevation (ft amsl)	Flow (gpm)	Water Elevation (ft amsl)								
09/01/15	625	151		63		94		94		78		63		0		0		8									
09/02/15	624	153		63		94		94		78		63		0		0		9									
09/03/15	626	151		63		94		94		78		63		0		0		8									
09/04/15	624	152		83		92		94		78		63		0		0		9									
09/05/15	625	151		42		93		94		78		63		0		0		8									
09/06/15	625	152		63		92		94		78		63		0		0		8									
09/07/15	624	151		62		92		94		78		63		0		0		9									
09/08/15	622	153		63		92		94		78		63		0		0		8									
09/09/15	623	153	Future Metric - Enhanced Operations	63	Future Metric - Enhanced Operations	92	Future Metric - Enhanced Operations	94	Future Metric - Enhanced Operations	78	Future Metric - Enhanced Operations	63	Future Metric - Enhanced Operations	0	Future Metric - Enhanced Operations	0	Future Metric - Enhanced Operations	9	Future Metric - Enhanced Operations								
09/10/15	619	151		63		94		78		63		0		0		8											
09/11/15	625	151		63		90		78		63		0		0		8											
09/12/15	624	151		63		91		78		62		0		0		8											
09/13/15	623	150		63		94		78		63		0		0		9											
09/14/15	622	149		63		93		78		63		0		0		8											
09/15/15	625	149		63		94		78		63		0		0		8											
09/16/15	625	149		63		90		78		63		0		0		8											
09/17/15	625	148		63		90		78		63		0		0		9											
09/18/15	624	149		63		90		78		63		0		0		8											
09/19/15	765	180		76		113		95		76		0		0		19											
09/20/15	765	181		76		113		96		76		0		0		19											
09/21/15	765	180		76		113		95		76		0		0		19											
9/22/2015 ⁴	695	164		69		101		87		69		0		0		14											
09/23/15	656	159		66		89		79		63		0		0		9											
09/24/15	611	147		62		85		79		63		0		0		8											
09/25/15	766	189		76		124		118		77		0		0		5											
09/26/15	705	174		70		114		109		71		0		0		4											
09/27/15	626	145	63	94	78	63	0	0	6																		
09/28/15	623	143	63	94	65	62	0	0	4																		
09/29/15	625	143	62	94	92	63	0	0	4																		
09/30/15	623	142	62	94	79	62	0	0	5																		
Monthly Average	648	155		65		96		97		81		65		0		0		9									
Analytical ¹	Conc (mg/L)		Date	Conc (mg/L)		Date	Conc (mg/L)		Date	Conc (mg/L)		Date	Conc (mg/L)		Date	Conc (mg/L)		Date	Conc (mg/L)		Date						
Perchlorate	18		9/8/2015	20		9/8/2015	11		9/8/2015	9.9		9/8/2015	2.8		9/8/2015	0.23		9/8/2015	0.067		9/8/2015	0.18		9/8/2015	0.77		9/8/2015
Hexavalent Chromium	Future Metric - Enhanced Operations (to be collected by ETI) ³																										
Total Chromium ²	ND		8/3/2015	0.004		8/3/2015	ND		8/3/2015	ND		8/3/2015	ND		8/3/2015	ND		8/3/2015	ND		8/3/2015	ND		8/3/2015	ND		8/3/2015

Notes:
 Flow reported as gpm is a daily average calculated from the totalizer reading.
 ND = Not detected above laboratory method detection limit (ClO₄ = 0.5 ug/L; ClO₃ = 10 ug/L; NO₃-N= 0.055 mg/L, CR(VI) = 0.25 ug/L).
 1: Analytical results are reported from TestAmerica.
 2: Quarterly results, most recent sampling concentrations listed (Samples will be transitioned to monthly reporting in the future).
 3: Following contractual amendment agreements, ETI will begin collecting monthly hexavalent chromium samples.
 4: Flow values estimated for all wells and lift station due to totalizer reset on September 22, 2015.

Nevada Environmental Response Trust Groundwater Extraction and Treatment System Enhanced Operational Metrics																	
Date	LS #3	ART 1A/1B		ART 2A/2B		ART 3A/3B		ART 4A/4B		ART 6/9	ART 6/9	ART 7A/7B		ART 8A/8B		PC-150	
	Flow (gpm)	Flow (gpm)	Water Elevation (ft amsl)	Flow (gpm)	Water Elevation (ft amsl)	Flow (gpm)	Water Elevation (ft amsl)	Flow (gpm)	Water Elevation (ft amsl)	Flow (gpm)	Water Elevation (ft amsl)	Flow (gpm)	Water Elevation (ft amsl)	Flow (gpm)	Water Elevation (ft amsl)	Flow (gpm)	Water Elevation (ft amsl)
09/01/15	250	8		62		36		16		54		37		62		5	
09/02/15	250	8		63		44		15		56		31		63		4	
09/03/15	251	8		63		43		15		55		29		47		4	
09/04/15	249	8		63		43		16		56		28		78		4	
09/05/15	250	8		63		43		15		56		28		63		4	
09/06/15	250	8		63		43		15		56		28		63		4	
09/07/15	250	8		63		42		16		63		27		63		4	
09/08/15	256	8		62		40		15		65		27		69		5	
09/09/15	256	8	Future Metric - Enhanced Operations	62	Future Metric - Enhanced Operations	41	Future Metric - Enhanced Operations	15	Future Metric - Enhanced Operations	66	Future Metric - Enhanced Operations	28	Future Metric - Enhanced Operations	69	Future Metric - Enhanced Operations	4	Future Metric - Enhanced Operations
09/10/15	249	8		63		43		15		63		29		63		4	
09/11/15	250	8		63		42		15		63		29		63		4	
09/12/15	250	8		63		42		16		63		28		63		4	
09/13/15	250	8		63		42		15		62		27		63		5	
09/14/15	250	8		63		42		15		63		27		63		4	
09/15/15	250	8		63		42		15		63		26		63		4	
09/16/15	250	8		63		42		16		63		26		63		4	
09/17/15	250	8		63		42		15		63		26		63		4	
09/18/15	249	8		63		42		15		63		26		63		5	
09/19/15	306	6		76		52		19		63		26		76		4	
09/20/15	307	6		76		53		19		63		26		76		5	
09/21/15	306	6		76		52		19		63		26		76		6	
9/22/2015 ⁴⁵	278	0	Future Metric - Enhanced Operations	69	Future Metric - Enhanced Operations	47	Future Metric - Enhanced Operations	17	Future Metric - Enhanced Operations	63	Future Metric - Enhanced Operations	26	Future Metric - Enhanced Operations	69	Future Metric - Enhanced Operations	5	Future Metric - Enhanced Operations
09/23/15	264	0		66		45		15		66		28		66		0	
09/24/15	243	0		62		43		16		61		26		61		5	
09/25/15	308	0		76		73		19		100		26		78		4	
09/26/15	283	0		70		67		18		92		25		71		3	
09/27/15	250	0		63		45		15		70		24		67		4	
09/28/15	249	0		62		46		16		70		24		69		5	
09/29/15	250	0		63		45		16		70		24		70		4	
09/30/15	250	0		51		45		15		71		24		76		4	
Monthly Average	260	5		64		46		16		65		27		66		4	
Analytical ¹		Conc (mg/L)	Date	Conc (mg/L)	Date	Conc (mg/L)	Date	Conc (mg/L)	Date	Conc (mg/L)	Date	Conc (mg/L)	Date	Conc (mg/L)	Date	Conc (mg/L)	Date
Perchlorate		18	9/8/2015	42	9/8/2015	210	9/8/2015	210	9/8/2015	250	9/8/2015	150	9/8/2015	140	9/8/2015	210	9/8/2015
Hexavalent Chromium		Future Metric - Enhanced Operations (to be collected by ETI) ³															
Total Chromium ²		ND	8/3/2015	0.032	8/3/2015	0.3	8/3/2015	0.42	8/3/2015	0.84	8/3/2015	0.71	8/3/2015	0.14	8/3/2015	0.3	8/3/2015

Notes:

- Flow reported as gpm is a daily average calculated from the totalizer reading.
- 1: Analytical results are reported from TestAmerica.
- 2: Quarterly results, most recent sampling concentrations listed (Samples will be transitioned to monthly reporting in the future).
- 3: Following contractual amendment agreements, ETI will begin collecting monthly hexavalent chromium samples.
- 4: Flow values estimated for all wells and lift station due to totalizer reset on September 22, 2015.
- 5: ART-1 turned off, ART-2 flow decreased, and ART-8 flow increased at the discretion of the Trust.

Table 3 - Interceptor Well Field (IWF) Operational Metrics

Nevada Environmental Response Trust Groundwater Extraction and Treatment System Enhanced Operational Metrics																				
Date	I-AR		I-AA		I-AB		I-AC		I-AD		I-B		I-C		I-D		I-E		I-F	
	Flow (gpm)	Water Elevation (ft amsl)	Flow (gpm)	Water Elevation (ft amsl)	Flow (gpm)	Water Elevation (ft amsl)	Flow (gpm)	Water Elevation (ft amsl)	Flow (gpm)	Water Elevation (ft amsl)	Flow (gpm)	Water Elevation (ft amsl)	Flow (gpm)	Water Elevation (ft amsl)	Flow (gpm)	Water Elevation (ft amsl)	Flow (gpm)	Water Elevation (ft amsl)	Flow (gpm)	Water Elevation (ft amsl)
09/01/15	0.60		1.23		0.00		0.00		0.00		0.91		3.41		1.51		1.09		3.69	
09/02/15	0.61		1.24		0.00		0.00		0.00		1.04		3.41		1.53		1.09		3.69	
09/03/15	0.62		1.24		0.00		0.00		0.00		1.04		3.32		1.51		1.09		3.66	
09/04/15	0.61		1.25		0.00		0.00		0.00		1.06		3.39		1.52		1.08		3.71	
09/05/15	0.88		1.74		0.00		0.00		0.00		1.38		4.74		2.13		1.53		5.23	
09/06/15	0.49		0.97		0.00		0.00		0.00		0.80		2.66		1.20		0.84		2.91	
09/07/15	0.63		1.25		0.00		0.00		0.00		1.07		3.46		1.53		1.11		3.73	
09/08/15	0.63		1.24		0.00		0.00		0.00		1.03		3.37		1.52		1.09		3.71	
09/09/15	0.63		1.24		0.00		0.00		0.00		1.06		3.38		1.52		1.05		3.66	
09/10/15	0.64		1.25		0.00		0.00		0.00		1.03		3.35		1.52		1.09		3.76	
09/11/15	0.64		1.25		0.00		0.00		0.00		1.05		3.43		1.52		1.07		3.76	
09/12/15	0.67		1.27		0.00		0.00		0.00		1.04		3.40		1.53		1.10		4.51	
09/13/15	0.65		1.26		0.00		0.00		0.00		1.29		3.31		1.53		1.14		4.78	
09/14/15	0.67		1.26		0.00		0.00		0.00		0.92		3.41		1.52		1.19		4.40	
09/15/15	0.67		1.26		0.00		0.00		0.00		1.04		3.47		1.51		1.11		3.81	
09/16/15	0.68		1.25		0.00		0.00		0.00		1.05		3.34		1.53		1.06		3.76	
09/17/15	0.69		1.26		0.00		0.00		0.00		1.03		3.42		1.55		1.06		3.80	
09/18/15	0.69		1.26		0.00		0.00		0.00		1.10		3.41		1.55		1.06		3.74	
09/19/15	0.71		1.29		0.00		0.00		0.00		1.07		3.43		1.56		1.05		3.93	
09/20/15	0.69		1.26		0.00		0.00		0.00		1.06		3.36		1.57		1.07		4.01	
09/21/15	0.69		1.28		0.00		0.00		0.00		1.06		3.41		1.58		1.14		4.84	
09/22/15	0.70		1.28		0.00		0.00		0.00		1.04		3.40		1.58		1.18		4.85	
09/23/15	0.69		1.28		0.00		0.00		0.00		1.04		3.45		1.58		1.12		4.49	
09/24/15	0.69		1.29		0.00		0.00		0.00		1.05		3.43		1.57		1.08		3.92	
09/25/15	0.71		1.26		0.00		0.00		0.00		1.03		3.33		1.58		1.10		3.85	
09/26/15	0.68		1.31		0.00		0.00		0.00		1.01		3.41		1.58		1.11		3.77	
09/27/15	0.66		1.31		0.00		0.00		0.00		1.11		3.49		1.57		1.07		3.74	
09/28/15	0.67		1.30		0.00		0.00		0.00		0.97		3.40		1.56		1.07		3.82	
09/29/15	0.65		1.30		0.00		0.00		0.00		1.03		3.43		1.56		1.10		3.64	
09/30/15	0.65		1.31		0.00		0.00		0.00		1.07		3.43		1.58		1.10		3.78	
Monthly Average	0.66		1.27		0.00		0.00		0.00		1.05		3.42		1.55		1.10		3.97	
Analytical ¹	Conc (mg/L)	Date	Conc (mg/L)	Date	Conc (mg/L)	Date	Conc (mg/L)	Date	Conc (mg/L)	Date	Conc (mg/L)	Date	Conc (mg/L)	Date	Conc (mg/L)	Date	Conc (mg/L)	Date	Conc (mg/L)	Date
Perchlorate ²	2200	8/3/2015	110	8/3/2015	400	8/3/2015		8/7/2015	120	8/7/2015	530	8/3/2015	840	8/3/2015	890	8/3/2015	840	8/3/2015	980	8/3/2015
Hexavalent Chromium	Future Metric - Enhanced Operations (to be collected by ETI) ³																			
Total Chromium ²	3.3	8/3/2015	0.058	8/3/2015	0.03	8/3/2015		8/7/2015	1.1	8/7/2015	0.14	8/3/2015	3.2	8/3/2015	13	8/3/2015	9.3	8/3/2015	19	8/3/2015

Notes:

Flow reported as gpm is a daily average calculated from the totalizer reading.

1: Analytical results are reported from TestAmerica.

2: Quarterly results, most recent sampling concentrations listed (Samples will be transitioned to monthly reporting in the future).

3: Following contractual amendment agreements, ETI will begin collecting monthly hexavalent chromium samples.

Table 3 - Interceptor Well Field (IWF) Operational Metrics

Nevada Environmental Response Trust Groundwater Extraction and Treatment System Enhanced Operational Metrics																				
Date	I-G Flow (gpm) water Elevation (ft amsl)	I-H Flow (gpm) water Elevation (ft amsl)	I-I Flow (gpm) water Elevation (ft amsl)	I-J Flow (gpm) water Elevation (ft amsl)	I-K Flow (gpm) water Elevation (ft amsl)	I-L Flow (gpm) water Elevation (ft amsl)	I-M Flow (gpm) water Elevation (ft amsl)	I-N Flow (gpm) water Elevation (ft amsl)	I-O Flow (gpm) water Elevation (ft amsl)	I-P Flow (gpm) water Elevation (ft amsl)										
09/01/15	0.13	0.65	5.08	6.50	3.81	2.40	2.33	2.40	1.08	1.50										
09/02/15	0.13	0.64	5.08	6.50	3.80	2.38	2.31	2.39	1.07	1.48										
09/03/15	0.12	0.65	5.06	6.50	3.80	2.38	2.32	2.39	1.08	1.50										
09/04/15	0.13	0.65	5.05	6.51	3.80	2.40	2.34	2.40	1.07	1.50										
09/05/15	0.18	0.92	7.12	9.18	5.35	3.37	3.31	3.38	1.52	2.10										
09/06/15	0.11	0.51	3.93	5.09	2.96	1.88	1.84	1.88	0.84	1.17										
09/07/15	0.12	0.64	5.10	6.56	3.81	2.40	2.33	2.40	1.08	1.49										
09/08/15	0.13	0.65	5.05	6.50	3.80	2.40	2.35	2.40	1.08	1.48										
09/09/15	0.13	0.64	5.04	6.45	3.77	2.40	2.34	2.38	1.08	1.49										
09/10/15	0.13	0.65	5.01	6.49	3.78	2.43	2.37	2.41	1.08	1.48										
09/11/15	0.13	0.66	5.05	6.54	3.82	2.43	2.36	2.42	1.09	1.49										
09/12/15	0.13	0.65	4.94	6.42	3.74	2.44	2.34	2.63	1.07	1.46										
09/13/15	0.13	0.65	4.97	6.44	3.76	2.44	2.34	2.76	1.09	1.48										
09/14/15	0.13	0.66	5.10	6.61	3.86	2.45	2.36	2.68	1.09	1.48										
09/15/15	0.13	0.67	4.91	6.34	3.70	2.46	2.35	2.52	1.09	1.48										
09/16/15	0.14	0.66	4.98	6.45	3.76	2.46	2.38	2.49	1.09	1.47										
09/17/15	0.13	0.66	4.99	6.45	3.77	2.46	2.35	2.48	1.10	1.47										
09/18/15	0.13	0.67	5.19	6.70	3.92	2.45	2.35	2.48	1.10	1.48										
09/19/15	0.14	0.66	4.82	6.21	3.62	2.49	2.34	2.49	1.09	1.47										
09/20/15	0.12	0.67	4.95	6.38	3.73	2.44	2.28	2.59	1.10	1.47										
09/21/15	0.14	0.67	5.03	6.48	3.77	2.47	2.31	2.79	1.11	1.48										
09/22/15	0.13	0.68	5.06	6.62	3.79	2.45	2.33	2.97	1.03	1.48										
09/23/15	0.13	0.68	5.04	6.91	3.80	2.46	2.35	2.91	1.12	1.51										
09/24/15	0.13	0.71	5.02	6.90	3.81	2.44	2.34	2.67	1.25	1.54										
09/25/15	0.13	0.71	5.04	6.73	3.83	2.41	2.36	2.63	1.19	1.56										
09/26/15	0.13	0.70	5.04	6.61	3.82	2.49	2.38	2.61	1.11	1.51										
09/27/15	0.14	0.71	5.00	6.55	3.80	2.46	2.37	2.61	1.08	1.51										
09/28/15	0.13	0.70	5.00	6.53	3.80	2.44	2.36	2.60	1.04	1.44										
09/29/15	0.13	0.70	4.96	6.47	3.78	2.44	2.35	2.61	1.02	1.56										
09/30/15	0.13	0.70	4.98	6.50	3.80	2.44	2.36	2.63	0.56 ⁴	1.48										
Monthly Average	0.13	0.67	5.05	6.57	3.81	2.45	2.36	2.57	1.08	1.50										
Analytical ¹	Conc (mg/L)	Date	Conc (mg/L)	Date	Conc (mg/L)	Date	Conc (mg/L)	Date	Conc (mg/L)	Date	Conc (mg/L)	Date	Conc (mg/L)	Date	Conc (mg/L)	Date	Conc (mg/L)	Date		
Perchlorate ²	660	8/3/2015	1900	8/3/2015	720	8/7/2015	280	8/7/2015	210	8/7/2015	950	8/3/2015	960	8/3/2015	960	8/3/2015	1100	8/3/2015	1300	8/3/2015
Hexavalent Chromium	Future Metric - Enhanced Operations (to be collected by ETI) ³																			
Total Chromium ²	10	8/3/2015	21	8/3/2015	13	8/7/2015	3.5	8/7/2015	2	8/7/2015	0.89	8/3/2015	9.3	8/3/2015	10	8/3/2015	18	8/3/2015	17	8/3/2015

Notes:

Flow reported as gpm is a daily average calculated from the totalizer reading.

1: Analytical results are reported from TestAmerica.

2: Quarterly results, most recent sampling concentrations listed (Samples will be transitioned to monthly reporting in the future).

3: Following contractual amendment agreements, ETI will begin collecting monthly hexavalent chromium samples.

4: Flow decreased due to accidental contraction interaction with well.

Table 3 - Interceptor Well Field (IWF) Operational Metrics

Nevada Environmental Response Trust Groundwater Extraction and Treatment System Enhanced Operational Metrics																				
Date	I-Q		I-R		I-S		I-T		I-U		I-V		I-W		I-X		I-Y		I-Z	
	Flow (gpm)	Water Elevation (ft amsl)	Flow (gpm)	Water Elevation (ft amsl)	Flow (gpm)	Water Elevation (ft amsl)	Flow (gpm)	Water Elevation (ft amsl)	Flow (gpm)	Water Elevation (ft amsl)	Flow (gpm)	Water Elevation (ft amsl)	Flow (gpm)	Water Elevation (ft amsl)	Flow ⁵ (gpm)	Water Elevation (ft amsl)	Flow (gpm)	Water Elevation (ft amsl)	Flow (gpm)	Water Elevation (ft amsl)
09/01/15	0.40		2.47		5.37		0.49		0.93		4.33		0.57		1.94		1.07		6.55	
09/02/15	0.39		2.47		5.40		0.35		0.91		4.33		0.57		1.92		1.12		6.55	
09/03/15	0.39		2.46		5.37		0.41		0.92		4.32		0.57		1.94		1.07		6.54	
09/04/15	0.40		2.47		5.30		0.42		0.91		4.38		0.58		2.01		1.21		6.55	
09/05/15	0.55		3.45		7.42		0.59		1.29		6.21		0.81		2.72		1.51		9.25	
09/06/15	0.31		1.92		4.12		0.30		0.72		3.42		0.45		1.59		0.81		5.12	
09/07/15	0.40		2.45		5.26		0.40		0.92		4.43		0.57		1.78		1.30		6.62	
09/08/15	0.40		2.45		5.27		0.48		0.91		4.38		0.56		1.94		1.26		6.54	
09/09/15	0.39		2.44		5.25		0.35		0.92		4.37		0.56		1.96		1.13		6.51	
09/10/15	0.64		1.78		5.27		0.41		0.92		4.37		0.57		1.97		1.20		6.52	
09/11/15	0.19		3.02		5.29		0.44		0.92		4.39		0.58		1.60		0.94		6.58	
09/12/15	0.40		2.50		5.36		0.35		0.91		4.27		0.55		0.00		0.96		6.45	
09/13/15	0.39		2.47		5.23		0.46		0.92		4.29		0.57		0.00		0.89		6.47	
09/14/15	0.40		2.48		5.34		0.43		0.92		4.33		0.57		2.09		0.82		6.65	
09/15/15	0.40		2.47		5.35		0.42		0.91		4.29		0.57		1.99		0.80		6.39	
09/16/15	0.39		2.45		5.39		0.42		0.91		4.36		0.56		2.11		0.59		6.48	
09/17/15	0.39		2.45		5.38		0.39		0.92		4.38		0.57		2.00		1.46		6.49	
09/18/15	0.39		2.44		5.42		0.44		0.93		4.55		0.57		2.06		1.34		6.74	
09/19/15	0.39		2.50		5.51		0.36		0.92		4.20		0.57		2.02		1.32		6.24	
09/20/15	0.39		2.46		5.41		0.41		0.92		4.31		0.57		0.16		1.25		6.40	
09/21/15	0.39		2.49		5.50		0.45		0.92		4.38		0.55		0.00		1.39		6.50	
09/22/15	0.41		2.45		5.38		0.35		0.93		4.45		0.56		0.00		1.27		5.95	
09/23/15	0.40		2.45		5.23		0.41		0.91		4.43		0.59		1.88		1.26		5.95	
09/24/15	0.39		2.44		5.21		0.42		0.92		4.40		0.59		2.15		1.15		1.74	
09/25/15	0.39		2.37		5.17		0.40		0.94		4.55		0.59		2.11		1.30		1.65	
09/26/15	0.38		2.43		5.36		0.43		0.92		4.54		0.59		2.10		1.34		6.72	
09/27/15	0.39		2.41		5.37		0.43		0.94		4.54		0.57		1.96		1.34		6.71	
09/28/15	0.38		2.39		5.35		0.42		0.92		4.55		0.58		2.12		1.27		6.71	
09/29/15	0.39		2.40		5.35		0.41		0.93		4.52		0.57		2.00		1.39		6.66	
09/30/15	0.39		2.41		5.37		0.36		0.93		4.55		0.56		2.06		1.35		6.67	
Monthly Average	0.40		2.46		5.37		0.41		0.93		4.43		0.57		1.67		1.17		6.23	
Analytical ¹	Conc (mg/L)	Date	Conc (mg/L)	Date	Conc (mg/L)	Date	Conc (mg/L)	Date	Conc (mg/L)	Date	Conc (mg/L)	Date	Conc (mg/L)	Date	Conc (mg/L)	Date	Conc (mg/L)	Date	Conc (mg/L)	Date
Perchlorate ²	1500	8/3/2015	1300	8/3/2015	730	8/3/2015	1200	8/3/2015	2000	8/3/2015	950	8/7/2015	1000	8/3/2015	1400	8/3/2015	1700	8/3/2015	330	8/7/2015
Hexavalent Chromium	Future Metric - Enhanced Operations (to be collected by ETI) ³																			
Total Chromium ²	24	8/3/2015	0.51	8/3/2015	1.7	8/3/2015	27	8/3/2015	21	8/3/2015	12	8/7/2015	17	8/3/2015	15	8/3/2015	1	8/3/2015	8.2	8/7/2015

Notes:
 Flow reported as gpm is a daily average calculated from the totalizer reading. NA = Not Available
 1: Analytical results are reported from TestAmerica.
 2: Quarterly results, most recent sampling concentrations listed (Samples will be transitioned to monthly reporting in the future).
 3: Following contractual amendment agreements, ETI will begin collecting monthly hexavalent chromium samples.
 5: Well I-X behaving sporadically. Well shut off on September 12 and 22, but ETI created work order, reset pump, and returned pump back to service within one day.
 6: I-Z totalizer recorded a negative number, but returned to normal on September 26.

Table 4 - Treatment Plant Operational Metrics

Nevada Environmental Response Trust Groundwater Extraction and Treatment System Enhanced Operational Metrics																	
Date	LS #2	GWTP Effluent				GW-11 Influent ²				FBR Plant Influent ¹							
	Flow (gpm)	Flow (gpm)	TA - Cr (TR) (mg/L)	TA - Cr (VI) (mg/L)	TA - ClO ₄ (mg/L)	Flow ⁴ (gpm)	Cr (TR) (mg/L)	Cr (VI) (mg/L)	ClO ₄ (mg/L)	Flow ⁴ (gpm)	TA - ClO ₄ (mg/L)	ETI - ClO ₄ (mg/L)	TA - ClO ₃ (mg/L)	TA - SO ₄ (mg/L)	TA - NO ₃ - N (mg/L)	TA-Cr (TR) (mg/L)	TA-Cr (VI) (mg/L)
09/01/15	750	56				849				929		79					
09/02/15	749	54				456				749		80					
09/03/15	751	54	0.21	ND	800	46				751		94					
09/04/15	750	55				11				750		77					
09/05/15	750	54				0				750	92	92					
09/06/15	750	56				0				750		95					
09/07/15	749	55				0				749		89					
09/08/15	750	53				0				750		93	180	1300	10	0.043	0.040
09/09/15	750	54				0				750		91					
09/10/15	750	54	0.61	ND	840	0				750		96					
09/11/15	750	67				0				750		97					
09/12/15	750	69				0				750	110	96					
09/13/15	747	69				0				747		94					
09/14/15	749	70				4				749		91			9	0.009	0.035
09/15/15	750	70				0				750		99					
09/16/15	751	67				0				751		96					
09/17/15	750	57	0.85	ND	800	0				750		98					
09/18/15	748	55				0				748		95					
09/19/15	918	57				0				918	100	94					
09/20/15	919	62				0				919		98					
09/21/15	918	68				0				918		94			10	ND	0.011
09/22/15	834 ³	65				0				834		96					
09/23/15	789	64				0				789		89					
09/24/15	732	68	0.31	ND	800	0				732		97					
09/25/15	925	62				0				925		97					
09/26/15	851	63				0				851	110	95					
09/27/15	753	63				0				753		96					
09/28/15	748	56				0				748		94			9	0.018	0.008
09/29/15	749	55				0				749		97					
09/30/15	750	55				0				750		97					
Monthly Average	779	60	0.50	ND	810	46				785	103	93	180	1300	9	0.023	0.024

Notes:

Flow reported as gpm is a daily average calculated from the totalizer reading.

ND = Not detected above laboratory method detection limit (ClO₄ = 0.5 ug/L; ClO₃ = 10 ug/L; NO₃-N= 0.055 mg/L, CR(VI) = 0.25 ug/L).

1: ETI = Envirogen internal process control data, TA = TestAmerica data.

2: Following contractual amendment agreements, ETI will begin collecting monthly analytical samples at the GW-11 influent sample tap.

3: Flow value estimated lift station due to totalizer reset on September 22, 2015.

4: Boatman bugs in GW-11 plugging filters so directed groundwater from LS2 to FBR plant beginning on September 2, 2015. FBR Influent flow reported from LS2 to PRP totalizer.

Table 4 - Treatment Plant Operational Metrics

Nevada Environmental Response Trust Groundwater Extraction and Treatment System Enhanced Operational Metrics																
Date	1st Stage FBR Influent			2nd Stage FBR Influent			FBR Plant Effluent ¹									
	Flow (gpm)	pH (s.u.)	ORP (mV)	Flow (gpm)	pH (s.u.)	ORP (mV)	Flow (gpm)	TA - ClO ₄ (mg/L)	ETI - ClO ₄ (mg/L)	TA - ClO ₃ (mg/L)	TA - Cr (TR) (mg/L)	TA - Cr (VI) (mg/L)	TA - SO ₄ (mg/L)	TA - NO ₃ - N (mg/L)	ETI - Turbidity (NTU)	
09/01/15	Future Metric - Enhanced Operations	7.09	-414	Future Metric - Enhanced Operations	7.19	-355	936		ND						1	
09/02/15		7.08	-395		7.38	-372	812		ND							11
09/03/15		7.20	-411		7.40	-369	875		ND							8
09/04/15		7.23	-418		7.37	-359	919		ND							7
09/05/15		7.19	-413		7.34	-362	924		ND							0
09/06/15		7.17	-412		7.30	-362	929		ND							4
09/07/15		7.18	-413		7.29	-364	927		ND							0
09/08/15		7.16	-407		7.26	-362	920		ND	0.057	0.007	ND		1,300	0.9	0
09/09/15		7.16	-410		7.27	-362	869		ND							0
09/10/15		7.13	-407		7.25	-356	908		ND							0
09/11/15		7.11	-405		7.29	-369	706		ND							3
09/12/15		7.12	-409		7.30	-364	919		ND							5
09/13/15		7.16	-410		7.36	-330	928		ND							15
09/14/15		7.17	-408		7.33	-328	933		ND		0.098	ND			0.5	12
09/15/15		7.20	-411		7.38	-335	880		ND							0
09/16/15		7.19	-411		7.37	-336	957		ND							0
09/17/15		7.16	-409		7.31	-341	941		ND							0
09/18/15		7.14	-406		7.29	-333	969		ND							0
09/19/15		7.11	-404		7.24	-329	973		ND							0
09/20/15		NA ²	NA ²		NA ²	NA ²	980		ND							0
09/21/15		NA ²	NA ²		NA ²	NA ²	996		ND			0.0038	ND		0.47	0
09/22/15		NA ²	NA ²		NA ²	NA ²	927		ND							0
09/23/15		NA ²	NA ²		NA ²	NA ²	950		ND							0
09/24/15		NA ²	NA ²		NA ²	NA ²	958		ND							0
09/25/15		NA ²	NA ²		NA ²	NA ²	1048		ND							0
09/26/15		NA ²	NA ²		NA ²	NA ²	1011		ND							0
09/27/15		NA ²	NA ²		NA ²	NA ²	1002		ND							0
09/28/15		NA ²	NA ²		NA ²	NA ²	997		ND		0.003	ND			0.86	0
09/29/15		NA ²	NA ²		NA ²	NA ²	990		ND							0
09/30/15		NA ²	NA ²		NA ²	NA ²	950		ND							0
Monthly Average		7.16	-409		7.31	-352	934	ND	ND	ND	0.03	ND	1300	0.68	2	

Notes:

Flow reported as gpm is a daily average calculated from the totalizer reading.

ND = Not detected above laboratory method detection limit (ClO₄ = 0.5 ug/L; ClO₃ = 10 ug/L; NO₃-N = 0.055 mg/L, CR(VI) = 0.25 ug/L).

1: ETI = Envirogen internal process control data, TA = TestAmerica data.

2: Dell computer went down on September 20 so pH and ORP data not available until computer repaired and back online.

GW-11 Level Monitoring		
Date	Field Measurement (ft)	Volume (MG)
9/8/2015	23.1	45.8
9/29/2015	23.5	45.3

GW-11 Leak Detection Monitoring				
Date	Amount Pumped (gallons)			
	NW Corner	NE Corner	SW Corner	SE Corner
9/8/2015	0	0	187	49
9/18/2015	0	0	182	231

GW-11 Composite Sample ¹		
Analytes	Concentration	Units
Perchlorate	77	mg/L
Chlorate	0	mg/L
Ammonia as N	0.72	mg/L
Total Phosphorus	0.67	mg/L
Total Dissolved Solids (TDS)	5800	mg/L
Total Suspended Solids (TSS)	300	mg/L
pH	7	s.u.
Calcium	290	mg/L
Iron	1	mg/L
Chromium (total)	0.046	mg/L
Chromium VI	ND	mg/L
Chloride	1700	mg/L
Nitrate as N	2	mg/L
Sulfate	1600	mg/L

Notes:

ND = Not detected above laboratory method detection limit (NH₃-N= 0.1 mg/L; Total P = .025 ug/L; CR(VI) = 0.25 ug/L).

1: Corner Composite Sample collected on: October 1, 2015 by Envirogen.

Nevada Environmental Response Trust Groundwater Extraction and Treatment System Enhanced Operational Metrics						
Date	Flow ¹ (gpm)	FBR Influent Concentration			Influent Function Load ² (lbs/day)	6 Month Rolling Average (lbs/day)
		ClO ₄ (mg/L)	NO ₃ as N (mg/L)	ClO ₃ (mg/L)		
Aug 2014	880	116	11	190	663	623
Sept 2014	828	120	11	200	649	609
Oct 2014	825	113	12	200	645	654
Nov 2014	828	108	9	160	548	646
Dec 2014	785	118	11	210	628	646
Jan 2015	844	84	7	190	628	627
Feb 2015	1021	101	7	210	542	613
Mar 2015	918	95	7	100	445	573
Apr 2015	916	97	7	140	523	552
May 2015	858	105	6	170	549	553
June 2015	824	108	6	170	532	536
July 2015	852	100	5	180	543	522
August 2015	866	87	6	160	502	516
Sept 2015 ³	785	103	9	180	540	531

Notes:

Concentrations and flow are presented as monthly average.

1: Flow used in loading calculation is average monthly FBR effluent flow to be consistent with historical loading calculations.

2: FBR loading calculated as $[0.9 * \text{NO}_3 \text{ as N} + 0.17 * \text{ClO}_3 + 0.18 * \text{ClO}_4 * \text{Flow} * 1440 / 1000000 * 8.34]$.

3: Flow for September taken from LS2 due to bugs in GW-11. Flow to plant going directly from LS2 during the month of September.

Figure 1 - GW-11 Pond Volume and Perchlorate Concentration

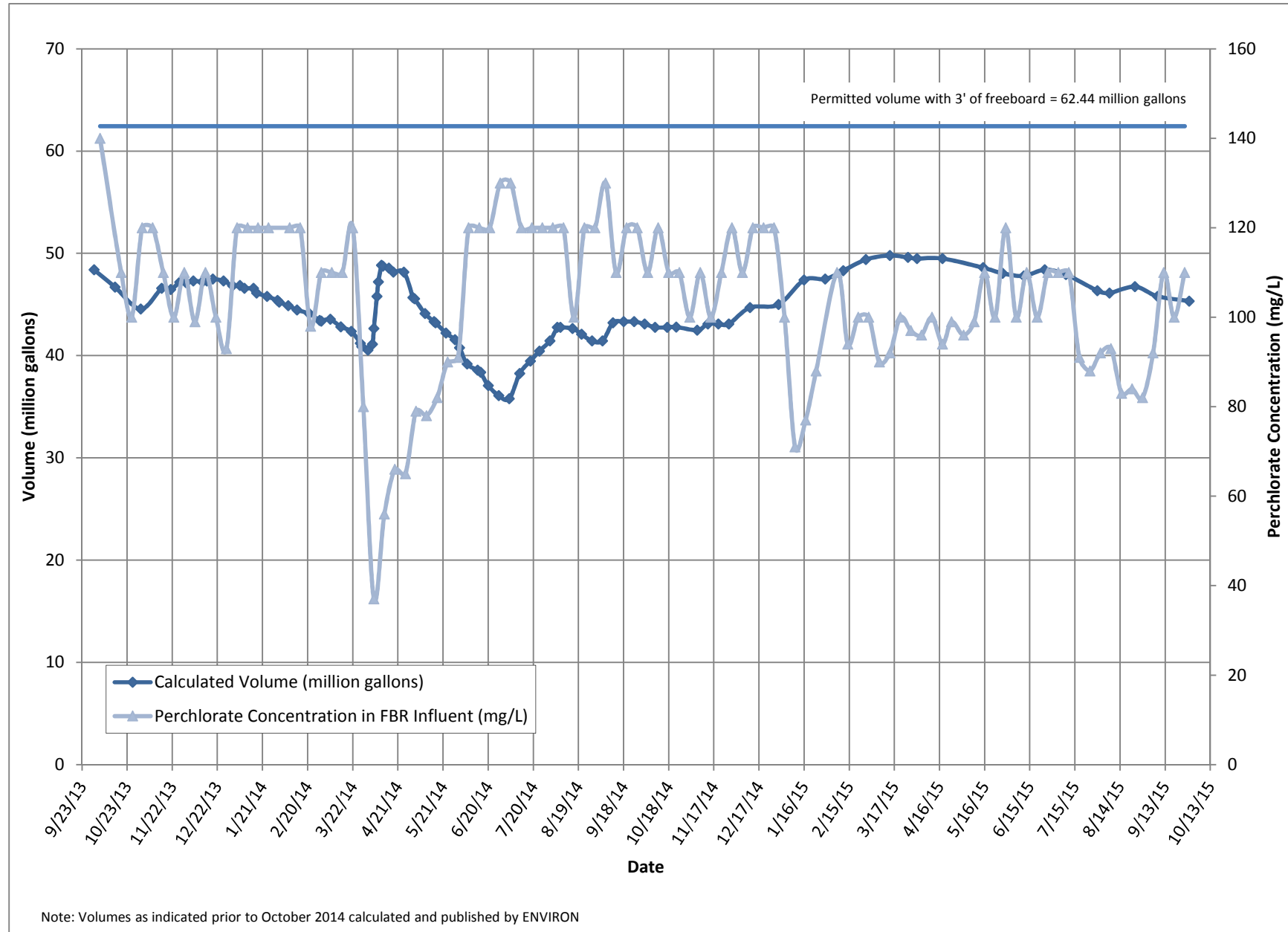


Figure 2 - FBR Equivalent Loading Calculation

