

Nevada Environmental Response Trust   Groundwater Extraction and Treatment System   Enhanced Operational Metrics																					
Date	East Well (PC-116R)			Center Well (PC99R2/99R3)			West Well (PC-115R)		PC 117		PC 118		PC 119		PC 120		PC 121		PC 133		
	Flow (gpm)	Flow (gpm)	Level (ft)	Flow (gpm)	Level (ft)	Flow (gpm)	Level (ft)	Flow (gpm)	Level (ft)	Flow (gpm)	Level (ft)	Flow (gpm)	Level (ft)	Flow (gpm)	Level (ft)	Flow (gpm)	Level (ft)	Flow (gpm)	Level (ft)		
07/01/15	624	149		62		91		94		78		63		0		0		0		4	
07/02/15	622	151		63		92		93		78		63		0		0		0		4	
07/03/15	626	151		63		92		94		78		63		0		0		0		4	
07/04/15	625	150		63		91		94		78		63		0		0		0		4	
07/05/15	624	151		63		92		94		78		63		0		0		0		4	
07/06/15	623	149		63		91		93		78		63		0		0		0		4	
07/07/15	625	151		63		91		94		78		63		0		0		0		NA <sup>3</sup>	
07/08/15	625	149	Future Metric - Enhanced Operations	63	Future Metric - Enhanced Operations	91	Future Metric - Enhanced Operations	94	Future Metric - Enhanced Operations	78	Future Metric - Enhanced Operations	62	Future Metric - Enhanced Operations	0	Future Metric - Enhanced Operations	0	Future Metric - Enhanced Operations	0	Future Metric - Enhanced Operations	8	Future Metric - Enhanced Operations
07/09/15	625	151		63		92		78		63		0		0		8					
07/10/15	624	150		63		90		78		63		0		0		9					
07/11/15	625	152		63		91		78		63		0		0		8					
07/12/15	625	151		63		91		78		63		0		0		8					
07/13/15	624	151		63		90		78		63		0		0		9					
07/14/15	626	153		63		90		78		63		0		0		8					
07/15/15	625	151		63		90		78		63		0		0		8					
07/16/15	624	152		63		94		78		63		0		0		8					
07/17/15	624	150		62		93		78		63		0		0		9					
07/18/15	625	151	63	94	78	63	0	0	8												
07/19/15	625	150	63	94	78	63	0	0	8												
07/20/15	624	149	63	94	78	63	0	0	8												
07/21/15	625	151	63	94	78	63	0	0	9												
07/22/15	623	150	63	94	78	63	0	0	8												
07/23/15	624	150	63	94	78	63	0	0	8												
07/24/15	625	150	63	94	78	63	0	0	9												
07/25/15	625	150	63	94	78	63	0	0	8												
07/26/15	624	150	63	92	78	63	0	0	8												
07/27/15	623	149	63	87	78	63	0	0	8												
07/28/15	626	150	63	89	78	63	0	0	8												
07/29/15	623	150	63	87	78	63	0	0	9												
07/30/15	625	151	63	88	78	63	0	0	8												
07/31/15	626	149	63	88	78	63	0	0	9												
Monthly Average	625	150		62		91		94		78		62		0		0		0		8	
Analytical <sup>1</sup>	Conc (mg/L) Date		Conc (mg/L) Date		Conc (mg/L) Date		Conc (mg/L) Date		Conc (mg/L) Date		Conc (mg/L) Date		Conc (mg/L) Date		Conc (mg/L) Date		Conc (mg/L) Date		Conc (mg/L) Date		
Perchlorate	17	7/6/2015	20	7/6/2015	10	7/6/2015	9.9	7/6/2015	3.0	7/6/2015	2.4	7/6/2015	0.076	7/6/2015	0.22	7/1/2015	0.79	7/6/2015			
Hexavalent Chromium	Future Metric - Enhanced Operations																				
Total Chromium <sup>2</sup>	ND	5/4/2015	0.004	5/4/2015	ND	5/4/2015	ND	5/4/2015	ND	5/4/2015	ND	5/4/2015	ND	5/4/2015	ND	5/4/2015	ND	5/4/2015	ND	5/4/2015	

Notes:  
 Flow reported as gpm is a daily average calculated from the totalizer reading.  
 ND = Not detected above laboratory method detection limit (ClO<sub>4</sub> = 0.5 ug/L; ClO<sub>3</sub> = 10 ug/L; NO<sub>3</sub>-N= 0.055 mg/L, CR(VI) = 0.25 ug/L).  
 1: Analytical results are reported from TestAmerica.  
 2: Quarterly results, most recent sampling concentrations listed (Samples will be transitioned to monthly reporting in the future).  
 3. Totalizer reset on well due to electrical issues.

Table 2 - Athens Road Well Field (AWF) Operational Metrics

Nevada Environmental Response Trust   Groundwater Extraction and Treatment System   Enhanced Operational Metrics																		
Date	LS #3	ART 1		ART 2		ART 3		ART 4		ART 9	ART 6	ART 9	ART 7B		ART 8		PC-150	
	Flow (gpm)	Flow (gpm)	Level (ft)	Flow (gpm)	Level (ft)	Flow (gpm)	Level (ft)	Flow (gpm)	Level (ft)	Flow (gpm)	Level (ft)	Level (ft)	Flow (gpm)	Level (ft)	Flow (gpm)	Level (ft)	Flow <sup>1</sup> (gpm)	Level (ft)
07/01/15	251	8		63		42		16 <sup>4</sup>		63			28		63		5	
07/02/15	249	8		63		42		16 <sup>4</sup>		63			27		63		5	
07/03/15	251	8		63		43		16		63			28		63		5	
07/04/15	250	8		63		43		16		63			28		63		5	
07/05/15	250	8		63		43		15		59			28		63		5	
07/06/15	249	8		62		43		16		56			27		63		5	
07/07/15	250	8		63		43		15		57			27		63		5	
07/08/15	250	8		63		42		16		56			27		63		5	
07/09/15	250	8		63		43		15		57			27		63		5	
07/10/15	249	8		63		43		16		56			27		63		5	
07/11/15	250	8		63		43		15		57			27		63		5	
07/12/15	250	8		63		43		16		57			28		63		5	
07/13/15	250	8		63		43		15		56			28		62		5	
07/14/15	250	8		63		43		16		57			27		63		5	
07/15/15	250	8		63		43		15		57			28		63		5	
07/16/15	250	8		63		43		16		56			27		63		5	
07/17/15	250	8		63		42		15		57			26		63		5	
07/18/15	250	8		63		43		16		57			28		63		5	
07/19/15	249	8		63		43		16		57			27		63		1	
07/20/15	250	8		63		43		15		56			28		63		3	
07/21/15	250	8		63		43		16		57			27		63		4	
07/22/15	250	8		63		43		16		57			27		63		3	
07/23/15	249	8		63		43		15		56			27		63		3	
07/24/15	250	8		63		43		16		57			27		63		4	
07/25/15	250	8		63		43		16		56			27		63		3	
07/26/15	251	8		63		43		15		56			27		63		4	
07/27/15	249	8		63		43		16		56			27		63		3	
07/28/15	250	8		62		43		15		56			27		63		3	
07/29/15	249	8		63		43		16		56			27		63		3	
07/30/15	250	8		63		43		15		56			27		63		3	
07/31/15	251	8		63		43		16		57			27		63		4	
Monthly Average	262	8		62		43		16		57			27		62		4	
Analytical <sup>2</sup>	Conc (mg/L)	Date	Conc (mg/L)	Date	Conc (mg/L)	Date	Conc (mg/L)	Date	ART-9 (mg/L)	ART-6 (mg/L)	Date	Conc (mg/L)	Date	Conc (mg/L)	Date	Conc (mg/L)	Date	
Perchlorate	17	7/6/2015	30	7/6/2015	220	7/6/2015	250	7/6/2015	200	29	7/6/2015	120	7/6/2015	130	7/6/2015	210	7/6/2015	
Hexavalent Chromium	Future Metric - Enhanced Operations																	
Total Chromium <sup>3</sup>	ND	5/4/2015	0.014	5/4/2015	0.33	5/4/2015	0.46	5/4/2015	0.88	0.13	5/4/2015	0.77	5/4/2015	0.17	5/4/2015	0.29	5/4/2015	

Notes:  
 Flow reported as gpm is a daily average calculated from the totalizer reading.  
 1: PC-150 flow estimated 07/01-07/19. Pump replaced on 07/19 and readings reported on 07/20-07/31.  
 2: Analytical results are reported from TestAmerica.  
 3: Quarterly results, most recent sampling concentrations listed (Samples will be transitioned to monthly reporting in the future).  
 4: Flow was estimated using preceding 7 day flow average due to malfunction in the totalizer.

Table 3 - Interceptor Well Field (IWF) Operational Metrics

Nevada Environmental Response Trust   Groundwater Extraction and Treatment System   Enhanced Operational Metrics																				
Date	I-AR		I-AA		I-AB		I-AC		I-AD		I-B		I-C		I-D		I-E		I-F	
	Flow (gpm)	Level (ft)	Flow (gpm)	Level (ft)	Flow (gpm)	Level (ft)	Flow (gpm)	Level (ft)	Flow (gpm)	Level (ft)	Flow (gpm)	Level (ft)	Flow (gpm)	Level (ft)	Flow (gpm)	Level (ft)	Flow (gpm)	Level (ft)	Flow (gpm)	Level (ft)
07/01/15	0.74		1.20		0.00		0.00		0.00		1.07		4.92		1.62		1.19		3.69	
07/02/15	0.72		1.18		0.00		0.00		0.00		1.02		4.60		1.62		1.14		3.62	
07/03/15	0.77		1.18		0.00		0.00		0.00		0.99		4.62		1.62		1.22		3.70	
07/04/15	0.78		1.19		0.00		0.00		0.00		1.02		5.30		1.62		1.21		3.70	
07/05/15	0.73		1.18		0.00		0.00		0.00		1.04		5.55		1.61		1.15		3.69	
07/06/15	0.76		1.18		0.00		0.00		0.00		1.05		5.46		1.59		1.18		3.76	
07/07/15	0.79		1.18		0.00		0.00		0.00		1.03		5.44		1.61		1.16		3.70	
07/08/15	0.72		1.20		0.00		0.00		0.00		1.01 <sup>3</sup>		5.23		1.60		1.16		3.67	
07/09/15	0.69		1.19		0.00		0.00		0.00		1.60		4.48		1.60		1.18		3.70	
07/10/15	0.73		1.19		0.00		0.00		0.00		1.05		3.07		1.59		1.19		3.74	
07/11/15	0.71		1.18		0.00		0.00		0.00		0.98		2.43		1.59		1.20		3.43	
07/12/15	0.71		1.18		0.00		0.00		0.00		1.09		1.09		1.59		1.20		4.08	
07/13/15	0.73		1.17		0.00		0.00		0.00		1.00		0.20		1.59		1.18		3.66	
07/14/15	0.70		1.20		0.00		0.00		0.00		1.11		0.02		1.60		1.19		3.68	
07/15/15	0.68		1.19		0.00		0.00		0.00		0.97		0.06		1.58		1.17		3.66	
07/16/15	0.68		1.18		0.00		0.00		0.00		1.10		0.2 <sup>4</sup>		1.60		1.16		3.66	
07/17/15	0.67		1.18		0.00		0.00		0.00		1.03		3.48		1.59		1.18		3.71	
07/18/15	0.66		1.17		0.00		0.00		0.00		0.99		3.40		1.55		1.09		3.62	
07/19/15	0.65		1.20		0.00		0.00		0.00		1.02		3.56		1.60		1.14		3.73	
07/20/15	0.65		1.19		0.00		0.00		0.00		1.11		3.41		1.57		1.12		3.69	
07/21/15	0.66		1.20		0.00		0.00		0.00		0.99		3.47		1.55		1.11		3.69	
07/22/15	0.66		1.18		0.00		0.00		0.00		1.10		3.45		1.55		1.10		4.01	
07/23/15	0.69		1.19		0.00		0.00		0.00		1.04		3.41		1.55		1.11		3.41	
07/24/15	0.72		1.22		0.00		0.00		0.00		1.08		3.51		1.58		1.14		3.80	
07/25/15	0.74		1.13		0.00		0.00		0.00		0.95		3.28		1.47		1.04		3.50	
07/26/15	0.81		1.21		0.00		0.00		0.00		1.10		3.47		1.56		1.12		3.73	
07/27/15	0.77		1.19		0.00		0.00		0.00		1.05		3.43		1.54		1.10		3.71	
07/28/15	0.80		1.20		0.00		0.00		0.00		1.03		3.43		1.55		1.11		3.64	
07/29/15	0.79		1.19		0.00		0.00		0.00		1.05		3.41		1.54		1.09		3.69	
07/30/15	0.79		1.19		0.00		0.00		0.00		0.55		3.37		1.53		1.09		3.65	
07/31/15	0.79		1.20		0.00		0.00		0.00		1.47		3.44		1.53		1.11		4.06	
Monthly Average	0.73		1.19		0.00		0.00		0.00		1.06		3.47		1.58		1.15		3.70	
Analytical <sup>1</sup>	Conc (mg/L)	Date	Conc (mg/L)	Date	Conc (mg/L)	Date	Conc (mg/L)	Date	Conc (mg/L)	Date	Conc (mg/L)	Date	Conc (mg/L)	Date	Conc (mg/L)	Date	Conc (mg/L)	Date	Conc (mg/L)	Date
Perchlorate <sup>2</sup>	2500	5/4/2015	110	5/4/2015	500	5/4/2015	79	5/29/2015	130	5/29/2015	730	5/4/2015	940	5/4/2015	710	5/4/2015	740	5/4/2015	1200	5/4/2015
Hexavalent Chromium	Future Metric - Enhanced Operations																			
Total Chromium <sup>3</sup>	0.46	5/4/2015	0.43	5/4/2015	ND	5/4/2015	0.59	5/29/2015	1.1	5/29/2015	0.17	5/4/2015	3.1	5/4/2015	5.8	5/4/2015	9.1	5/4/2015	18	5/4/2015

Notes:  
 Flow reported as gpm is a daily average calculated from the totalizer reading.  
 1: Analytical results are reported from TestAmerica.  
 2: Quarterly results, most recent sampling concentrations listed (Samples will be transitioned to monthly reporting in the future).  
 3: The flow was estimated using preceding 7 day flow average due to totalizer recording error.  
 4: Flow meter replaced.

Table 3 - Interceptor Well Field (IWF) Operational Metrics

Nevada Environmental Response Trust   Groundwater Extraction and Treatment System   Enhanced Operational Metrics																				
Date	I-G		I-H		I-I		I-J		I-K		I-L		I-M		I-N		I-O		I-P	
	Flow (gpm)	Level (ft)	Flow (gpm)	Level (ft)	Flow (gpm)	Level (ft)	Flow (gpm)	Level (ft)	Flow (gpm)	Level (ft)	Flow (gpm)	Level (ft)	Flow (gpm)	Level (ft)	Flow (gpm)	Level (ft)	Flow (gpm)	Level (ft)	Flow (gpm)	Level (ft)
07/01/15	0.14		0.81		4.94		7.15		4.03		2.98		2.41		2.70		1.66		1.83	
07/02/15	0.13		0.78		5.11		7.11		4.16		2.92		2.41		2.66		1.51		1.77	
07/03/15	0.14		0.77		4.87		6.65		3.95		2.93		2.38		2.68		1.47		1.76	
07/04/15	0.14		0.78		4.91		6.61		3.94		2.92		2.41		2.69		1.43		1.73	
07/05/15	0.14		0.76		4.91		6.58		3.93		2.90		2.41		2.67		1.39		1.70	
07/06/15	0.13		0.75		4.86		6.51		3.90		2.84		2.38		2.65		1.35		1.67	
07/07/15	0.14		0.73		4.94		6.57		3.91		2.82		2.42		2.66		1.32		1.67	
07/08/15	0.14		0.73		4.96		6.56		3.91		2.84		2.44		2.67		1.32		1.67	
07/09/15	0.14		0.73		4.96		6.55		3.93		2.83		2.41		2.66		1.30		1.64	
07/10/15	0.14		0.72		4.92		6.54		3.94		2.81		2.38		2.64		1.28		1.63	
07/11/15	0.14		0.73		4.92		6.49		3.90		2.82		2.36		2.62		1.27		1.62	
07/12/15	0.14		0.72		4.95		6.57		3.92		2.80		2.36		2.62		1.28		1.61	
07/13/15	0.14		0.72		4.76		6.27		3.76		2.75		2.37		2.63		1.28		1.61	
07/14/15	0.14		0.72		5.14		6.76		4.03		2.80		2.37		2.61		1.29		1.60	
07/15/15	0.14		0.72		4.99		6.53		3.88		2.78		2.35		2.61		1.28		1.61	
07/16/15	0.14		0.72		4.95		6.49		3.85		2.74		2.35		2.60		1.26		1.60	
07/17/15	0.14		0.72		4.94		6.48		3.84		2.74		2.34		2.59		1.27		1.60	
07/18/15	0.13		0.71		4.93		6.45		3.84		2.71		2.30		2.54		1.21		1.57	
07/19/15	0.14		0.74		5.06		6.63		3.93		2.77		2.40		2.63		1.25		1.62	
07/20/15	0.14		0.72		4.98		6.54		3.88		2.67		2.36		2.54		1.19		1.61	
07/21/15	0.14		0.72		4.95		6.48		3.83		2.66		2.36		2.54		1.20		1.59	
07/22/15	0.14		0.73		4.94		6.42		3.78		2.66		2.36		2.54		1.20		1.61	
07/23/15	0.14		0.73		5.04		6.54		3.85		2.67		2.36		2.54		1.20		1.58	
07/24/15	0.14		0.75		4.91		6.37		3.77		2.73		2.44		2.59		1.22		1.62	
07/25/15	0.13		0.69		5.12		6.64		3.93		2.54		2.25		2.41		0.85		1.50	
07/26/15	0.14		0.75		4.99		6.49		3.83		2.70		2.37		2.57		1.58		1.61	
07/27/15	0.14		0.72		5.00		6.50		3.83		2.66		2.34		2.52		1.24		1.57	
07/28/15	0.13		0.72		4.98		6.47		3.83		2.66		2.38		2.53		1.24		1.58	
07/29/15	0.13		0.73		5.06		6.53		3.86		2.66		2.36		2.50		1.21		1.56	
07/30/15	0.14		0.72		4.96		6.38		3.78		2.65		2.36		2.49		1.22		1.56	
07/31/15	0.13		0.73		5.09		6.54		3.88		2.66		2.37		2.50		1.21		1.57	
Monthly Average	0.14		0.73		4.97		6.56		3.89		2.76		2.37		2.59		1.29		1.63	
Analytical <sup>1</sup>	Conc (mg/L)	Date	Conc (mg/L)	Date	Conc (mg/L)	Date	Conc (mg/L)	Date	Conc (mg/L)	Date	Conc (mg/L)	Date	Conc (mg/L)	Date	Conc (mg/L)	Date	Conc (mg/L)	Date	Conc (mg/L)	Date
Perchlorate <sup>2</sup>	930	5/4/2015	2100	5/4/2015	780	5/29/2015	340	5/29/2015	240	5/29/2015	1000	5/4/2015	960	5/4/2015	1100	5/4/2015	1200	5/4/2015	1400	5/4/2015
Hexavalent Chromium	Future Metric - Enhanced Operations																			
Total Chromium <sup>2</sup>	13	5/4/2015	21	5/4/2015	10	5/29/2015	3	5/29/2015	1.8	5/29/2015	0.83	5/4/2015	7.8	5/4/2015	9.4	5/4/2015	16	5/4/2015	19	5/4/2015

Notes:

Flow reported as gpm is a daily average calculated from the totalizer reading.

1: Analytical results are reported from TestAmerica.

2: Quarterly results, most recent sampling concentrations listed (Samples will be transitioned to monthly reporting in the future).

Table 3 - Interceptor Well Field (IWF) Operational Metrics

Nevada Environmental Response Trust   Groundwater Extraction and Treatment System   Enhanced Operational Metrics																				
Date	I-Q		I-R		I-S		I-T		I-U		I-V		I-W		I-X		I-Y		I-Z	
	Flow (gpm)	Level (ft)	Flow (gpm)	Level (ft)	Flow (gpm)	Level (ft)	Flow (gpm)	Level (ft)	Flow (gpm)	Level (ft)	Flow (gpm)	Level (ft)	Flow (gpm)	Level (ft)	Flow (gpm)	Level (ft)	Flow (gpm)	Level (ft)	Flow (gpm)	Level (ft)
07/01/15	0.40		2.38		4.99		0.40		0.93		4.36		0.66		2.16		1.37		6.43	
07/02/15	0.40		2.36		4.91		0.43		0.91		4.50		0.62		2.04		1.36		7.53	
07/03/15	0.40		2.34		4.93		0.45		0.93		4.28		0.64		2.17		1.35		7.02	
07/04/15	0.41		2.37		4.99		0.36		0.93		4.31		0.62		2.08		1.38		6.95	
07/05/15	0.40		2.37		4.96		0.47		0.93		4.30		0.63		1.95		1.36		6.88	
07/06/15	0.40		2.38		4.91		0.42		0.91		4.26		0.62		2.08		1.39		6.79	
07/07/15	0.40		2.39		4.95		0.41		0.92		4.31		0.62		2.13		1.38		6.84	
07/08/15	0.41		2.42		4.99		0.40		0.93		4.31		0.61		2.13		1.40		6.81	
07/09/15	0.40		2.42		4.97		0.44		0.92		4.33		0.62		1.96		1.39		6.79	
07/10/15	0.40		2.43		4.97		0.42		0.92		4.34		0.61		2.18		1.41		6.75	
07/11/15	0.41		2.43		4.95		0.42		0.92		4.31		0.61		2.09		1.41		6.71	
07/12/15	0.40		2.46		4.96		0.40		0.93		4.36		0.61		2.14		1.40		6.77	
07/13/15	0.40		2.43		4.93		0.43		0.92		4.17		0.60		2.11		1.40		6.47	
07/14/15	0.41		2.47		5.00		0.42		0.91		4.41		0.60		2.13		1.43		6.97	
07/15/15	0.40		2.46		4.98		0.41		0.91		4.40		0.60		2.02		1.42		6.73	
07/16/15	0.40		2.47		4.97		0.41		0.91		4.20		0.60		2.02		1.34		6.67	
07/17/15	0.40		2.46		4.95		0.40		0.91		4.28		0.60		2.08		1.32		6.67	
07/18/15	0.40		2.43		4.89		0.43		0.89		4.28		0.60		2.04		1.33		6.64	
07/19/15	0.41		2.48		5.02		0.42		0.93		4.40		0.60		2.10		1.37		6.81	
07/20/15	0.40		2.47		4.94		0.35		0.91		4.34		0.61		2.08		1.36		6.72	
07/21/15	0.40		2.48		4.93		0.43		0.91		4.29		0.59		2.13		1.35		6.65	
07/22/15	0.40		2.49		4.94		0.41		0.91		4.27		0.60		1.95		1.36		6.60	
07/23/15	0.40		2.47		4.93		0.42		0.91		4.36		0.59		2.15		1.38		6.71	
07/24/15	0.41		2.50		5.07		0.40		0.93		4.25		0.62		2.05		1.40		6.54	
07/25/15	0.38		2.31		4.67		0.44		0.87		4.42		0.55		1.97		1.31		6.80	
07/26/15	0.41		2.48		5.01		0.42		0.93		4.32		0.61		2.03		1.38		6.65	
07/27/15	0.40		2.44		4.89		0.42		0.90		4.32		0.59		2.13		1.39		6.66	
07/28/15	0.41		2.45		4.91		0.41		0.91		4.31		0.60		1.97		1.38		6.62	
07/29/15	0.40		2.45		4.94		0.42		0.91		4.37		0.59		2.12		1.37		6.69	
07/30/15	0.39		2.46		4.94		0.41		0.91		4.26		0.59		1.98		1.38		6.53	
07/31/15	0.40		2.46		4.97		0.39		0.91		4.37		0.58		1.99		1.41		6.69	
Monthly Average	0.40		2.43		4.95		0.42		0.92		4.32		0.61		2.07		1.38		6.74	
Analytical <sup>1</sup>	Conc (mg/L)	Date	Conc (mg/L)	Date	Conc (mg/L)	Date	Conc (mg/L)	Date	Conc (mg/L)	Date	Conc (mg/L)	Date	Conc (mg/L)	Date	Conc (mg/L)	Date	Conc (mg/L)	Date	Conc (mg/L)	Date
Perchlorate <sup>2</sup>	2000	5/4/2015	1700	5/4/2015	730	5/4/2015	2000	5/4/2015	2000	5/4/2015	1100	5/29/2015	1500	5/4/2015	1600	5/4/2015	1500	5/4/2015	400	5/29/2015
Hexavalent Chromium	Future Metric - Enhanced Operations																			
Total Chromium <sup>2</sup>	23	5/4/2015	0.5	5/4/2015	1.7	5/4/2015	25	5/4/2015	23	5/4/2015	10	5/29/2015	16	5/4/2015	12	5/4/2015	0.9	5/4/2015	7.4	5/29/2015

Notes:  
 Flow reported as gpm is a daily average calculated from the totalizer reading. NA = Not Available  
 1: Analytical results are reported from TestAmerica.  
 2: Quarterly results, most recent sampling concentrations listed (Samples will be transitioned to monthly reporting in the future).

Table 4 - Treatment Plant Operational Metrics

Nevada Environmental Response Trust   Groundwater Extraction and Treatment System   Enhanced Operational Metrics																	
Date	LS #2	GWTP Effluent				GW-11 Influent <sup>2</sup>				FBR Plant Influent <sup>1</sup>							
	Flow (gpm)	Flow (gpm)	TA - Cr (TR) (mg/L)	TA - Cr (VI) (mg/L)	TA - ClO <sub>4</sub> (mg/L)	Flow <sup>3</sup> (gpm)	Cr (TR) (mg/L)	Cr (VI) (mg/L)	ClO <sub>4</sub> (mg/L)	Flow (gpm)	TA - ClO <sub>4</sub> (mg/L)	ETI - ClO <sub>4</sub> (mg/L)	TA - ClO <sub>3</sub> (mg/L)	TA - SO <sub>4</sub> (mg/L)	TA - NO <sub>3</sub> - N (mg/L)	TA-Cr (TR) (mg/L)	TA-Cr (VI) (mg/L)
07/01/15	753	70				863						93					
07/02/15	747	73	0.13	ND	830	875						92					
07/03/15	752	71				869						89					
07/04/15	750	71				693					110	90					
07/05/15	749	71				532						88					
07/06/15	748	69				867						85	180	1,400	6	0.022	0.0004
07/07/15	750	71				885						88					
07/08/15	749	70				654						84					
07/09/15	750	69	0.10	ND	880	1169						89					
07/10/15	749	71				864	Future Metric - Enhanced Operations	Future Metric - Enhanced Operations	Future Metric - Enhanced Operations	Future Metric - Enhanced Operations		89					
07/11/15	750	70				869					110	92					
07/12/15	750	70				857						92					
07/13/15	749	70				861						91					
07/14/15	751	70				858						81			5	0.016	0.011
07/15/15	750	67				866						92					
07/16/15	749	71	0.11	ND	850	860						91					
07/17/15	749	72				864						91					
07/18/15	750	71				866					91	87					
07/19/15	749	71				863						86					
07/20/15	749	71				865						88			5	0.020	0.013
07/21/15	750	71				866						89					
07/22/15	751	72				867						87					
07/23/15	748	69	0.14	ND	800	865						88					
07/24/15	750	71				866						87					
07/25/15	750	69				866					88	88					
07/26/15	751	70				865						88					
07/27/15	748	61				866						84			5	0.016	0.008
07/28/15	751	58				859						89					
07/29/15	748	57				545						91					
07/30/15	750	62	0.13	ND	800	NA <sup>3</sup>						96					
07/31/15	751	58				1337						101					
Monthly Average	750	69	0.12	ND	832	857					100	89	180	1400	5	0.019	0

Notes:

Flow reported as gpm is a daily average calculated from the totalizer reading.

ND = Not detected above laboratory method detection limit (ClO<sub>4</sub> = 0.5 ug/L; ClO<sub>3</sub> = 10 ug/L; NO<sub>3</sub>-N= 0.055 mg/L, CR(VI) = 0.25 ug/L).

1: ETI = Envirogen internal process control data, TA = TestAmerica data.

2: Following contractual amendment agreements, ETI will begin collecting new analytical samples at the GW-11 influent sample tap.

3: On 7/29/15, flow from lift station 2 to GW-11 was sent directly to the FBR's due to the plugging of the screens. On 7/31/15, the effluent flow was diverted to GW-11 due to high ClO<sub>4</sub> caused by air compressor failure.

Table 4 - Treatment Plant Operational Metrics

Nevada Environmental Response Trust   Groundwater Extraction and Treatment System   Enhanced Operational Metrics															
Date	1st Stage FBR Influent			2nd Stage FBR Influent			FBR Plant Effluent <sup>1</sup>								
	Flow (gpm)	pH (s.u.)	ORP (mV)	Flow (gpm)	pH (s.u.)	ORP (mV)	Flow (gpm)	TA - ClO <sub>2</sub> (mg/L)	ETI - ClO <sub>2</sub> (mg/L)	TA - ClO <sub>3</sub> (mg/L)	TA - Cr (TR) (mg/L)	TA - Cr (VI) (mg/L)	TA - SO <sub>4</sub> (mg/L)	TA - NO <sub>3</sub> - N (mg/L)	ETI - Turbidity (NTU)
07/01/15		7.04	-373		7.02	-355	848		ND						12
07/02/15		7.05	-370		7.06	-358	897		ND						27
07/03/15		6.95	-376		7.05	-356	897		ND						14
07/04/15		7.09	-368		7.17	-364	891	ND	ND						2
07/05/15		7.07	-370		7.19	-365	919		ND						1
07/06/15		7.10	-377		7.24	-372	940		ND	ND	0.049	ND	1,200	ND	14
07/07/15		NA <sup>4</sup>	NA <sup>4</sup>		NA <sup>4</sup>	NA <sup>4</sup>	113		ND						17
07/08/15		7.11	-383		7.36	-354	696		ND						2
07/09/15		7.31	-384		7.43	-362	825		ND						1
07/10/15		0.00	-386		7.34	-359	828		ND						1
07/11/15		0.00	-388		7.34	-362	940	ND	ND						1
07/12/15		0.00	-395		7.25	-362	942		ND						2
07/13/15		7.02	-397		7.16	-366	941		ND						3
07/14/15		6.97	-390		7.21	-366	954		ND		ND			0.16	4
07/15/15		6.97	-397		7.18	-361	947		ND						4
07/16/15		6.98	-395		7.12	-336	819		ND						14
07/17/15		6.99	-397		7.23	-361	905		ND						8
07/18/15		7.06	-396		7.35	-369	900	ND	ND						16
07/19/15		7.04	-397		7.22	-364	932		ND						8
07/20/15		7.01	-397		7.20	-364	936		ND		ND			ND	7
07/21/15		6.89	-395		7.10	-358	922		ND						7
07/22/15		6.93	-393		7.16	-356	934		ND						4
07/23/15		6.94	-391		7.15	-355	919		ND						4
07/24/15		6.97	-392		7.22	-349	904		ND						4
07/25/15		6.88	-389		7.03	-348	935	ND	ND						8
07/26/15		6.93	-390		7.09	-350	926		ND						6
07/27/15		6.83	-391		7.10	-354	903		ND		0.0046	ND		ND	4
7/28/2015 <sup>5</sup>		6.74	-388		7.14	-332	745		ND						10
07/29/15		6.99	-394		7.23	-353	897		ND						26
07/30/15		6.96	-365		7.12	-319	836		ND						15
7/31/2015 <sup>6</sup>		6.91	-395		7.31	-352	768		ND						15
Monthly Average		6.29	-387		7.19	-356	848	ND	ND	ND	0.03	ND	1200	0.16	8

Notes:

Flow reported as gpm is a daily average calculated from the totalizer reading.

ND = Not detected above laboratory method detection limit (ClO<sub>2</sub> = 0.5 ug/L; ClO<sub>3</sub> = 10 ug/L; NO<sub>3</sub>-N= 0.055 mg/L, CR(VI) = 0.25 ug/L).

1: ETI = Envirogen internal process control data, TA = TestAmerica data.

4: On 07/07 and 07/08 FBR Plant down during Allen Bradley PLC issue.

5: On 07/28, plant shutdown for CPU replacement and the FBR totalizer was reset.

6: On 07/31 there was an effluent diversion to GW-11 of 191,526 gallons due to an air compressor failure and that is reflected in the FBR Plant Effluent flow.

GW-11 Level Monitoring		
Date	Field Measurement (ft)	Volume (MG)
7/9/2015	21.5	47.9
7/30/2015	22.7	46.4

GW-11 Leak Detection Monitoring				
Date	Amount Pumped (gallons)			
	NW Corner	NE Corner	SW Corner	SE Corner
7/9/2015	36	38	1556	89
7/30/2015	4	0	1029	111

GW-11 Composite Sample <sup>1</sup>		
Analytes	Concentration	Units
Perchlorate	79	mg/L
Chlorate	210	mg/L
Ammonia as N	0.76	mg/L
Total Phosphorus	0.098	mg/L
Total Dissolved Solids (TDS)	5500	mg/L
Total Suspended Solids (TSS)	99	mg/L
pH	7.81	s.u.
Calcium	330	mg/L
Iron	1.6	mg/L
Chromium (total)	0.08	mg/L
Chromium VI	8.7	mg/L
Chloride	1600	mg/L
Nitrate as N	5.9	mg/L
Sulfate	1600	mg/L

Notes:

ND = Not detected above laboratory method detection limit (NH3-N= 0.1 mg/L; Total P = .025 ug/L).

1: Corner Composite Sample collected on: July 29, 2015 by Envirogen.



Nevada Environmental Response Trust   Groundwater Extraction and Treatment System   Enhanced Operational Metrics						
Date	Flow <sup>1</sup> (gpm)	FBR Influent Concentration			Influent Function Load <sup>2</sup> (lbs/day)	6 Month Rolling Average (lbs/day)
		ClO <sub>4</sub> (mg/L)	NO <sub>3</sub> as N (mg/L)	ClO <sub>3</sub> (mg/L)		
July 2014	786	123	8.8	220	636	636
Aug 2014	880	116	11	190	663	649
Sept 2014	828	120	11	200	649	649
Oct 2014	825	113	12	200	645	648
Nov 2014	828	108	9.4	160	548	628
Dec 2014	785	118	11	210	628	628
Jan 2015	844	84	6.6	190	628	627
Feb 2015	1021	101	7.0	210	542	613
Mar 2015	918	95	7.0	100	445	594
Apr 2015	916	97	7.0	140	523	576
May 2015	858	105	6.1	170	549	582
June 2015	824	108	6.0	170	532	569
July 2015	852	100	5.0	180	543	558

Notes:

Concentrations and flow are presented as monthly average.

1: Flow used in loading calculation is average monthly FBR effluent flow to be consistent with historical loading calculations.

2: FBR loading calculated as  $[0.9 \cdot \text{NO}_3 \text{ as N} + 0.17 \cdot \text{ClO}_3 + 0.18 \cdot \text{ClO}_4 \cdot \text{Flow} \cdot 1440 / 1000000 \cdot 8.34]$ .

Figure 1 - GW-11 Pond Volume and Perchlorate Concentration

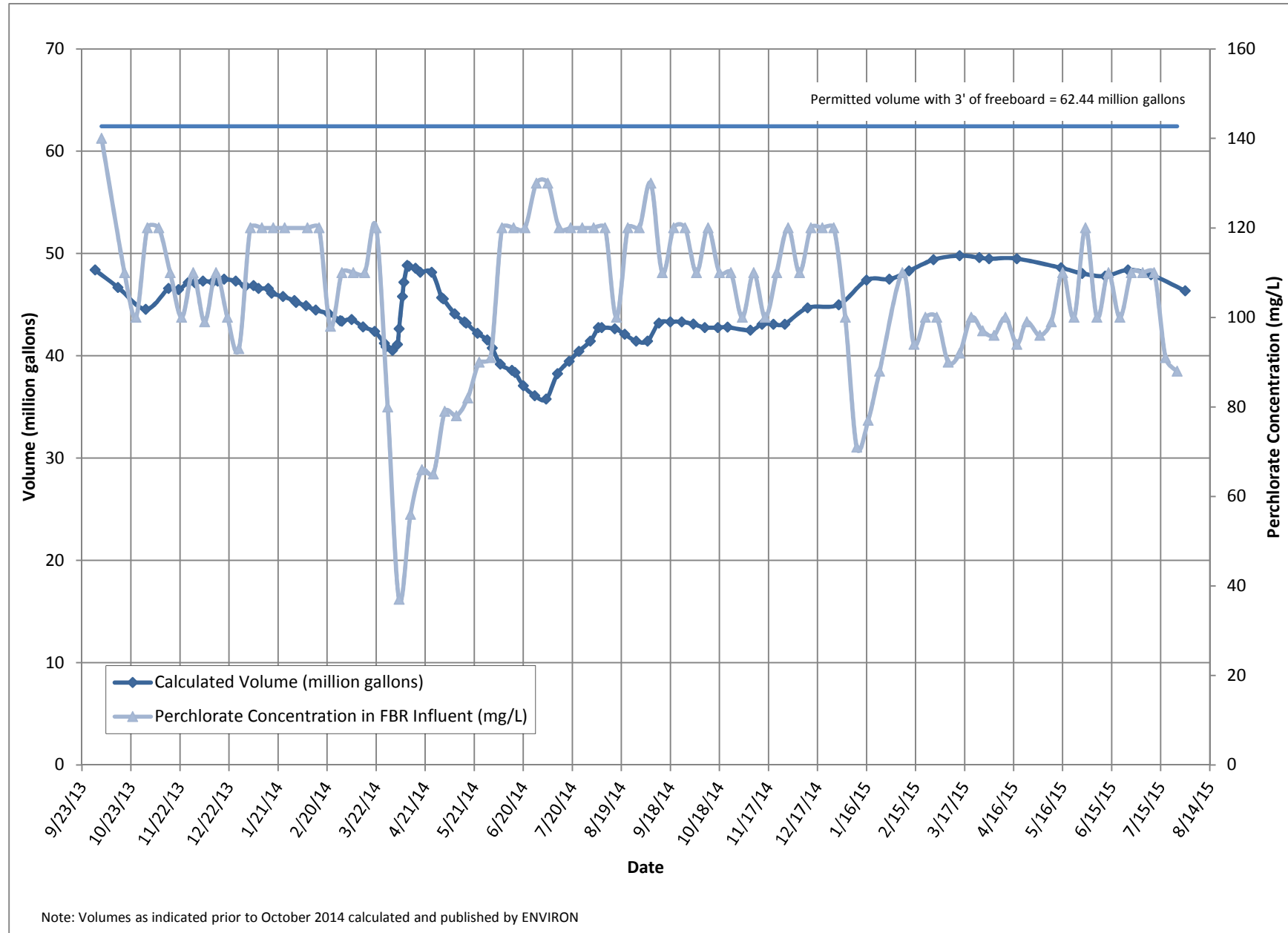


Figure 2 - FBR Equivalent Loading Calculation

