

Table 1 - Seep Well Field (SWF) Operational Metrics

Nevada Environmental Response Trust   Groundwater Extraction and Treatment System   Enhanced Operational Metrics																			
Date	LS #1	East Well (PC-116R)		Center Well (PC99R2/99R3)		West Well (PC-115R)		PC 117		PC 118		PC 119		PC 120		PC 121		PC 133	
	Flow (gpm)	Flow (gpm)	Level (ft)	Flow (gpm)	Level (ft)	Flow (gpm)	Level (ft)	Flow (gpm)	Level (ft)	Flow (gpm)	Level (ft)	Flow (gpm)	Level (ft)	Flow (gpm)	Level (ft)	Flow (gpm)	Level (ft)	Flow (gpm)	Level (ft)
06/01/15	625	141		63		87		94		78		63		0		0		4	
06/02/15	624	141		62		87		94		78		63		0		0		5	
06/03/15	625	140		63		86		94		78		63		0		0		4	
06/04/15	624	138		62		87		93		78		63		0		0		4	
06/05/15	625	140		63		87		94		78		63		0		0		4	
06/06/15	626	141		63		85		94		78		63		0		0		4	
06/07/15	622	140		63		86		93		78		63		0		0		4	
06/08/15	626	138		63		85		94		78		63		0		0		4	
06/09/15	623	140		63		82		94		78		63		0		0		4	
06/10/15	626	141		63		88		94		78		63		0		0		5	
06/11/15	624	141		63		93		94		78		63		0		0		4	
06/12/15	625	142		63		94		94		78		63		0		0		4	
06/13/15	624	140		63		93		94		78		63		0		0		4	
06/14/15	617	140		60		88		94		78		63		0		0		4	
06/15/15	624	148		63		90		94		78		63		0		0		4	
06/16/15	626	148		63		90		94		78		63		0		0		4	
06/17/15	626	149		63		90		94		78		63		0		0		4	
06/18/15	623	149		63		91		94		78		62		0		0		5	
06/19/15	624	149		63		90		93		78		63		0		0		4	
06/20/15	626	150		63		88		94		78		63		0		0		4	
06/21/15	626	149		63		90		94		78		63		0		0		4	
06/22/15	624	147		63		90		93		78		63		0		0		4	
06/23/15	624	147		63		90		94		78		63		0		0		4	
06/24/15	625	147		63		83		94		78		63		0		0		5	
06/25/15	625	149		63		81		94		78		63		0		0		4	
06/26/15	625	149		63		81		94		78		63		0		0		4	
06/27/15	623	148		62		81		94		78		63		0		0		4	
06/28/15	624	149		63		92		94		78		63		0		0		4	
06/29/15	625	149		63		94		94		78		63		0		0		4	
06/30/15	618	147		61		90		94		78		63		0		0		5	
Monthly Average	624	144		62		88		94		78		62		0		0		4	
Analytical <sup>1</sup>		Conc (mg/L)	Date	Conc (mg/L)	Date	Conc (mg/L)	Date	Conc (mg/L)	Date	Conc (mg/L)	Date	Conc (mg/L)	Date	Conc (mg/L)	Date	Conc (mg/L)	Date	Conc (mg/L)	Date
Perchlorate		17	6/1/2015	20	6/1/2015	11	6/1/2015	10	6/1/2015	2.7	6/1/2015	2.5	6/1/2015	0.081	6/1/2015	0.26	6/1/2015	10	6/1/2015
Hexavalent Chromium		Future Metric - Enhanced Operations																	
Total Chromium <sup>2</sup>		ND	5/4/2015	0.004	5/4/2015	ND	5/4/2015	ND	5/4/2015	ND	5/4/2015	ND	5/4/2015	ND	5/4/2015	ND	5/4/2015	ND	5/4/2015

Notes:  
 Flow reported as gpm is a daily average calculated from the totalizer reading.  
 ND = Not detected above laboratory method detection limit (ClO<sub>4</sub> = 0.5 ug/L; ClO<sub>3</sub> = 10 ug/L; NO<sub>3</sub>-N = 0.055 mg/L, CR(VI) = 0.25 ug/L).  
 1: Analytical results are reported from TestAmerica.  
 2: Quarterly results, most recent sampling concentrations listed (Samples will be transitioned to monthly reporting in the future).

Table 2 - Athens Road Well Field (AWF) Operational Metrics

Nevada Environmental Response Trust   Groundwater Extraction and Treatment System   Enhanced Operational Metrics																		
Date	LS #3 Flow (gpm)	ART 1		ART 2		ART 3		ART 4		ART 9 Flow (gpm)	ART 6 Level (ft)	ART 9 Level (ft)	ART 7B		ART 8		PC-150	
		Flow (gpm)	Level (ft)	Flow (gpm)	Level (ft)	Flow (gpm)	Level (ft)	Flow (gpm)	Level (ft)				Flow (gpm)	Level (ft)	Flow <sup>1</sup> (gpm)	Level (ft)		
06/01/15	250	8		63		44		16		63			29		63		5	
06/02/15	250	8		63		44		15		62			28		62		5	
06/03/15	250	8		63		44		16		63			28		63		5	
06/04/15	249	8		63		44		15		63			28		63		5	
06/05/15	250	8		63		44		16		63			29		63		5	
06/06/15	251	8		63		44		16		63			28		63		5	
06/07/15	249	8		63		43		15		63			28		63		5	
06/08/15	251	8		63		44		16		63			28		63		5	
06/09/15	249	8		63		44		16		63			28		63		5	
06/10/15	251	8		63		43		16		63			28		63		5	
06/11/15	249	8		63		44		15		63			28		63		5	
06/12/15	250	8		63		44		16		63			28		63		5	
06/13/15	250	8		63		43		16		63			28		63		5	
06/14/15	250	8		63		43		15		63			28		63		5	
06/15/15	249	8		62		44		16		63			28		63		5	
06/16/15	250	8		63		43		16		63			28		63		5	
06/17/15	251	8		63		43		16		63			28		63		5	
06/18/15	249	8		62		44		15		63			28		63		5	
06/19/15	249	8		63		42		16		62			28		62		5	
06/20/15	250	8		63		43		16		63			28		63		5	
06/21/15	250	8		63		44		15		63			28		63		5	
06/22/15	250	8		63		43		16		63			28		62		5	
06/23/15	250	8		63		43		15		62			28		63		5	
06/24/15	250	8		63		43		16		63			28		63		5	
06/25/15	250	8		63		43		16		63			28		63		5	
06/26/15	250	8		63		42		15		63			28		63		5	
06/27/15	249	8		63		43		16		63			28		63		5	
06/28/15	250	8		63		43		15		63			28		63		5	
06/29/15	250	8		63		42		16		63			28		63		5	
06/30/15	250	8		63		43		15		63			27		63		5	
Monthly Average	262	8		62		43		16		62			28		62		4.5	
Analytical <sup>2</sup>	Conc (mg/L)	Date	Conc (mg/L)	Date	Conc (mg/L)	Date	Conc (mg/L)	Date	ART-6 (mg/L)	ART-9 (mg/L)	Date	Conc (mg/L)	Date	Conc (mg/L)	Date	Conc (mg/L)	Date	
Perchlorate	17	6/1/2015	32	6/1/2015	230	6/1/2015	280	6/1/2015	34	240	6/1/2015	150	6/1/2015	160	6/1/2015	190	6/1/2015	
Hexavalent Chromium	Future Metric - Enhanced Operations																	
Total Chromium <sup>3</sup>	ND	5/4/2015	0.014	5/4/2015	0.33	5/4/2015	0.46	5/4/2015	0.13	0.88	5/4/2015	0.77	5/4/2015	0.17	5/4/2015	0.29	5/4/2015	

Notes:

Flow reported as gpm is a daily average calculated from the totalizer reading.

1: Flow is being estimated due to low sensitivity of the instrumentation.

2: Analytical results are reported from TestAmerica.

3: Quarterly results, most recent sampling concentrations listed (Samples will be transitioned to monthly reporting in the future).

Table 3 - Interceptor Well Field (IWF) Operational Metrics

Nevada Environmental Response Trust   Groundwater Extraction and Treatment System   Enhanced Operational Metrics																				
Date	I-AR		I-AA		I-AB		I-AC		I-AD		I-B		I-C		I-D		I-E		I-F	
	Flow (gpm)	Level (ft)	Flow (gpm) <sup>4</sup>	Level (ft)	Flow (gpm)	Level (ft)	Flow (gpm)	Level (ft)	Flow (gpm)	Level (ft)	Flow (gpm)	Level (ft)	Flow (gpm)	Level (ft)	Flow (gpm)	Level (ft)	Flow (gpm)	Level (ft)	Flow (gpm)	Level (ft)
06/01/15	0.75		0.20		0.00		0.00		0.00		1.04		5.58		1.69		1.16		3.72	
06/02/15	0.72		0.00		0.00		0.00		0.00		1.00		5.48		1.66		1.14		3.71	
06/03/15	0.71		0.00		0.00		0.00		0.00		1.01		5.44		1.68		1.15		3.67	
06/04/15	0.71		0.00		0.00		0.00		0.00		1.13		5.53		1.66		1.17		3.73	
06/05/15	0.68		0.00		0.00		0.00		0.00		1.03		5.52		1.68		1.13		3.73	
06/06/15	0.66		0.00		0.00		0.00		0.00		1.02		5.41		1.66		1.10		3.76	
06/07/15	0.69		0.01		0.00		0.00		0.00		1.07		5.50		1.67		1.11		3.75	
06/08/15	0.72		0.36		0.00		0.00		0.00		1.02		5.60		1.67		1.16		3.65	
06/09/15	0.70	Future Metric - Enhanced Operations	0.01	Future Metric - Enhanced Operations	0.00	Future Metric - Enhanced Operations	0.00	Future Metric - Enhanced Operations	0.00	Future Metric - Enhanced Operations	1.05	Future Metric - Enhanced Operations	5.64	Future Metric - Enhanced Operations	1.65	Future Metric - Enhanced Operations	1.18	Future Metric - Enhanced Operations	3.62	Future Metric - Enhanced Operations
06/10/15	0.72		0.07		0.00		0.00		0.00		1.05		5.64		1.65		1.19		3.65	
06/11/15	0.72		0.12		0.00		0.00		0.00		0.97		5.67		1.65		1.18		3.74	
06/12/15	0.73		0.65		0.00		0.00		0.00		1.04		5.69		1.64		1.10		3.63	
06/13/15	0.73		0.78		0.00		0.00		0.00		1.02		5.71		1.65		1.20		3.73	
06/14/15	0.73		0.69		0.00		0.00		0.00		0.99		5.68		1.64		1.21		4.32	
06/15/15	0.71		0.75		0.00		0.00		0.00		0.98		5.58		1.63		1.16		4.18	
06/16/15	0.75		0.85		0.00		0.00		0.00		1.05		4.14		1.67		1.17		3.77	
06/17/15	0.72		0.81		0.00		0.00		0.00		1.03		5.60		1.66		1.19		4.38	
06/18/15	0.74		1.12		0.00		0.00		0.00		1.00		4.34		1.64		1.12		4.55	
06/19/15	0.75		1.18		0.00		0.00		0.00		1.02		4.27		1.67		1.12		4.78	
06/20/15	0.72		1.14		0.00		0.00		0.00		0.99		3.51		1.60		1.11		4.69	
06/21/15	0.75		1.16		0.00		0.00		0.00		1.03		4.14		1.62		1.22		4.72	
06/22/15	0.73		1.17		0.00		0.00		0.00		1.01		5.32		1.62		1.18		4.28	
06/23/15	0.72		1.15		0.00		0.00		0.00		1.00		5.24		1.59		1.13		3.74	
06/24/15	0.74		1.18		0.00		0.00		0.00		1.04		5.61		1.64		1.16		3.81	
06/25/15	0.73		1.18		0.00		0.00		0.00		0.96		5.58		1.63		1.15		3.77	
06/26/15	0.59 <sup>3</sup>		1.17		0.00		0.00		0.00		1.03		4.26		1.62		1.20		3.69	
06/27/15	0.96 <sup>3</sup>		1.18		0.00		0.00		0.00		1.02		5.52		1.62		1.18		3.75	
06/28/15	0.74		1.17		0.00		0.00		0.00		0.99		4.83		1.60		1.17		3.68	
06/29/15	0.76	1.17	0.00	0.00	0.00	1.02	5.09	1.59	1.14	3.66										
06/30/15	0.76	1.22	0.00	0.00	0.00	1.02	4.77	1.65	1.20	3.74										
Monthly Average	0.73		0.68		0.00		0.00		0.00		1.02		5.20		1.64		1.16		3.92	
Analytical <sup>1</sup>	Conc (mg/L)	Date	Conc (mg/L)	Date	Conc (mg/L)	Date	Conc (mg/L)	Date	Conc (mg/L)	Date	Conc (mg/L)	Date	Conc (mg/L)	Date	Conc (mg/L)	Date	Conc (mg/L)	Date	Conc (mg/L)	Date
Perchlorate <sup>2</sup>	2500	5/4/2015	110	5/4/2015	500	5/4/2015	79	5/29/2015	130	5/29/2015	730	5/4/2015	940	5/4/2015	710	5/4/2015	740	5/4/2015	1200	5/4/2015
Hexavalent Chromium	Future Metric - Enhanced Operations																			
Total Chromium <sup>2</sup>	0.46	5/4/2015	0.43	5/4/2015	ND	5/4/2015	0.59	5/29/2015	1.1	5/29/2015	0.17	5/4/2015	3.1	5/4/2015	5.8	5/4/2015	9.1	5/4/2015	18	5/4/2015

Notes:

Flow reported as gpm is a daily average calculated from the totalizer reading.

1: Analytical results are reported from TestAmerica.

2: Quarterly results, most recent sampling concentrations listed (Samples will be transitioned to monthly reporting in the future).

3: I-AR readings were reported differently due to operator recording error.

4: On 6/08/15 the pipes for I-AA were repaired due to corrosion. I-AA readings on 6/09/15 and 6/10/15 were low due to the flow meter being reset. On 6/18/15 readings increased due to the valve being opened slightly for more flow.

Table 3 - Interceptor Well Field (IWF) Operational Metrics

Nevada Environmental Response Trust   Groundwater Extraction and Treatment System   Enhanced Operational Metrics																				
Date	I-G		I-H		I-I		I-J		I-K		I-L		I-M		I-N		I-O		I-P	
	Flow (gpm)	Level (ft)	Flow (gpm)	Level (ft)	Flow (gpm)	Level (ft)	Flow (gpm)	Level (ft)	Flow (gpm)	Level (ft)	Flow (gpm)	Level (ft)	Flow (gpm)	Level (ft)	Flow (gpm)	Level (ft)	Flow (gpm)	Level (ft)	Flow (gpm)	Level (ft)
06/01/15	0.16		0.79		4.90		6.50		3.94		3.20		2.44		2.68		1.31		1.73	
06/02/15	0.17		0.78		4.88		6.46		3.91		3.14		2.39		2.65		1.29		1.69	
06/03/15	0.17		0.80		5.05		6.69		4.04		3.35		2.46		2.71		1.34		1.74	
06/04/15	0.17		0.79		4.80		6.35		3.83		3.50		2.45		2.70		1.31		1.71	
06/05/15	0.16		0.79		5.19		6.87		4.14		3.35		2.45		2.72		1.32		1.71	
06/06/15	0.17		0.80		4.70		6.23		3.75		3.21		2.41		2.70		1.32		1.71	
06/07/15	0.17		0.79		4.93		6.51		3.91		3.28		2.43		2.72		1.32		1.71	
06/08/15	0.15		0.80		4.95		6.55		3.94		3.27		2.44		2.72		1.32		1.71	
06/09/15	0.17		0.79		4.82		6.38		3.85		3.29		2.44		2.70		1.32		1.68	
06/10/15	0.16		0.80		4.89		6.51		3.92		3.28		2.45		2.71		1.33		1.66	
06/11/15	0.15		0.80		4.87		6.53		3.92		3.26		2.44		2.73		1.33		1.65	
06/12/15	0.14		0.80		5.31		7.10		4.26		3.21		2.43		2.70		1.31		1.62	
06/13/15	0.14		0.81		4.45		5.95		3.55		3.21		2.43		2.72		1.56		1.68	
06/14/15	0.13		0.85		4.78		6.48		3.85		3.21		2.40		2.92		1.84		1.78	
06/15/15	0.14		0.89		4.79		6.45		3.82		3.16		2.38		2.92		1.87		1.83	
06/16/15	0.14		0.88		4.93		6.67		3.97		3.26		2.45		2.79		1.78		1.82	
06/17/15	0.14		0.88		4.91		6.64		3.96		3.22		2.43		2.94		1.75		1.79	
06/18/15	0.13		0.88		4.87		6.59		3.93		3.27		2.42		3.03		1.79		1.81	
06/19/15	0.14		0.90		4.78		6.44		3.84		3.28		2.47		3.25		1.63		1.78	
06/20/15	0.13		0.84		4.98		6.67		3.98		3.19		2.36		3.19		1.49		1.69	
06/21/15	0.13		0.87		4.83		6.45		3.85		3.22		2.41		3.27		1.49		1.68	
06/22/15	0.14		0.85		4.65		6.58		3.94		3.18		2.43		2.97		1.46		1.66	
06/23/15	0.13		0.83		4.58		6.35		3.78		3.15		2.38		2.74		1.42		1.62	
06/24/15	0.14		0.84		4.91		6.52		3.90		3.23		2.46		2.78		1.45		1.67	
06/25/15	0.14		0.84		4.91		6.54		3.90		3.18		2.46		2.77		1.36		1.64	
06/26/15	0.14		0.85		5.00		7.01		3.97		3.12		2.44		2.74		1.55		1.66	
06/27/15	0.14		0.87		4.90		7.12		3.93		3.17		2.45		2.73		1.72		1.73	
06/28/15	0.14		0.83		4.77		6.91		3.89		3.17		2.42		2.72		1.66		1.80	
06/29/15	0.14		0.81		4.88		6.96		4.01		3.09		2.36		2.68		1.54		1.78	
06/30/15	0.14		0.81		4.80		7.03		3.90		2.99		2.46		2.78		1.67		1.87	
Monthly Average	0.15		0.83		4.87		6.60		3.91		3.22		2.43		2.81		1.50		1.72	
Analytical <sup>1</sup>	Conc (mg/L)	Date	Conc (mg/L)	Date	Conc (mg/L)	Date	Conc (mg/L)	Date	Conc (mg/L)	Date	Conc (mg/L)	Date	Conc (mg/L)	Date	Conc (mg/L)	Date	Conc (mg/L)	Date	Conc (mg/L)	Date
Perchlorate <sup>2</sup>	930	5/4/2015	2100	5/4/2015	780	5/29/2015	340	5/29/2015	240	5/29/2015	1000	5/4/2015	960	5/4/2015	1100	5/4/2015	1200	5/4/2015	1400	5/4/2015
Hexavalent Chromium	Future Metric - Enhanced Operations																			
Total Chromium <sup>2</sup>	13	5/4/2015	21	5/4/2015	10	5/29/2015	3	5/29/2015	1.8	5/29/2015	0.83	5/4/2015	7.8	5/4/2015	9.4	5/4/2015	16	5/4/2015	19	5/4/2015

Notes:

Flow reported as gpm is a daily average calculated from the totalizer reading.

1: Analytical results are reported from TestAmerica.

2: Quarterly results, most recent sampling concentrations listed (Samples will be transitioned to monthly reporting in the future).

Table 3 - Interceptor Well Field (IWF) Operational Metrics

Nevada Environmental Response Trust   Groundwater Extraction and Treatment System   Enhanced Operational Metrics																				
Date	I-Q		I-R		I-S		I-T		I-U		I-V		I-W		I-X		I-Y		I-Z	
	Flow (gpm)	Level (ft)	Flow (gpm)	Level (ft)	Flow (gpm)	Level (ft)	Flow <sup>5</sup> (gpm)	Level (ft)	Flow (gpm)	Level (ft)	Flow <sup>6</sup> (gpm)	Level (ft)	Flow <sup>7</sup> (gpm)	Level (ft)	Flow <sup>8</sup> (gpm)	Level (ft)	Flow <sup>9</sup> (gpm)	Level (ft)	Flow <sup>10</sup> (gpm)	Level (ft)
06/01/15	0.42		2.36		4.66		0.44		0.96		4.56		0.45		2.15		1.50		6.79	
06/02/15	0.40		2.33		4.60		0.43		0.93		4.54		0.34		2.17		1.46		6.75	
06/03/15	0.41		2.47		4.61		0.37		0.95		4.70		0.16		2.26		1.48		6.98	
06/04/15	0.41		2.57		4.66		0.47		0.94		4.46		0.00		2.16		1.48		6.62	
06/05/15	0.41		2.49		4.67		0.45		0.94		4.82		0.00		2.09		1.11		7.15	
06/06/15	0.41		2.39		4.60		0.38		0.94		4.38		0.00		2.25		1.35		6.48	
06/07/15	0.41		2.42		4.72		0.45		0.95		4.56		0.00		2.19		1.38		6.77	
06/08/15	0.41		2.41		4.71		0.44		0.93		4.55		0.07		2.27		1.12		6.79	
06/09/15	0.40		2.41		4.74		0.35		0.92		4.42		0.00		2.15		1.08		6.62	
06/10/15	0.41		2.39		4.73		0.49		0.92		4.47		0.50		2.22		1.09		6.74	
06/11/15	0.42		2.39		4.75		0.42		0.93		4.45		0.58		2.21		2.09		6.75	
06/12/15	0.40		2.40		4.75		0.40		0.91		4.83		0.58		2.19		1.34		7.35	
06/13/15	0.41		2.39		4.77		0.41		0.93		4.52		0.61		1.97		1.34		6.22	
06/14/15	0.41		2.40		4.76		0.45		0.92		0.00		0.64		2.17		1.32		6.88	
06/15/15	0.40		2.38		4.70		0.42		0.93		1.74		0.64		2.17		1.31		6.84	
06/16/15	0.41		2.47		4.87		0.42		0.94		3.18		0.64		2.15		1.36		7.03	
06/17/15	0.40		2.42		4.70		0.41		0.93		1.79		0.63		2.15		1.31		6.97	
06/18/15	0.41		2.44		4.74		0.47		0.93		3.65		0.64		2.14		1.33		6.94	
06/19/15	0.42		2.46		4.83		0.42		0.94		4.29		0.63		2.13		1.37		6.69	
06/20/15	0.41		2.36		4.69		0.37		0.90		4.47		0.59		2.13		1.30		6.91	
06/21/15	0.43		2.41		4.78		0.51		0.91		4.35		0.61		2.15		1.34		6.67	
06/22/15	0.42		2.39		4.81		0.39		0.91		4.45		0.60		2.61		1.35		6.80	
06/23/15	0.41		2.37		4.75		0.46		0.91		4.25		0.44		2.35		0.93		6.54	
06/24/15	0.41		2.43		4.90		0.42		0.92		4.38		0.71		2.17		1.66		6.72	
06/25/15	0.41		2.33		4.90		0.41		0.92		4.35		0.60		2.17		1.36		4.50	
06/26/15	0.40		2.30		4.87		0.43		0.92		4.44		0.61		2.11		1.33		0.00	
06/27/15	0.40		2.34		4.91		0.34		0.92		4.35		0.61		2.02		1.36		0.00	
06/28/15	0.41		2.34		4.84		0.09		0.93		4.23		0.65		2.13		1.33		7.19	
06/29/15	0.41		2.34		4.72		0.22		0.94		4.32		0.63		2.20		1.33		2.87	
06/30/15	0.41		2.43		5.02		0.41		0.95		4.22		0.67		2.20		1.39		0.00	
Monthly Average	0.41		2.40		4.76		0.40		0.93		4.06		0.46		2.18		1.35		5.92	
Analytical <sup>1</sup>	Conc (mg/L)	Date	Conc (mg/L)	Date	Conc (mg/L)	Date	Conc (mg/L)	Date	Conc (mg/L)	Date	Conc (mg/L)	Date	Conc (mg/L)	Date	Conc (mg/L)	Date	Conc (mg/L)	Date	Conc (mg/L)	Date
Perchlorate <sup>2</sup>	2000	5/4/2015	1700	5/4/2015	730	5/4/2015	2000	5/4/2015	2000	5/4/2015	1100	5/29/2015	1500	5/4/2015	1600	5/4/2015	1500	5/4/2015	400	5/29/2015
Hexavalent Chromium	Future Metric - Enhanced Operations																			
Total Chromium <sup>2</sup>	23	5/4/2015	0.5	5/4/2015	1.7	5/4/2015	25	5/4/2015	23	5/4/2015	10	5/29/2015	16	5/4/2015	12	5/4/2015	0.9	5/4/2015	7.4	5/29/2015

Notes:

- Flow reported as gpm is a daily average calculated from the totalizer reading. NA = Not Available
- 1: Analytical results are reported from TestAmerica.
- 2: Quarterly results, most recent sampling concentrations listed (Samples will be transitioned to monthly reporting in the future).
- 5: Well I-T's flow meter was reset.
- 6: Well I-V had the motor replaced impacting the flows between 6/14/15-6/18/15.
- 7: Well I-W's valve was opened on 06/09 to flush the flow meter.
- 8: Well I-X reset the flow meter and as a result the flow values between 6/14/15-6/18/15 were estimated using the preceding seven day flow values.
- 9: The flow meter for well I-Y on 6/04/15 was not reading correctly but was later cleaned out and working properly.
- 10: The sensitivity setting within the flow meter for well I-Z was too low but has since been corrected.

Table 4 - Treatment Plant Operational Metrics

Nevada Environmental Response Trust   Groundwater Extraction and Treatment System   Enhanced Operational Metrics																	
Date	LS #2	GWTP Effluent				GW-11 Influent <sup>2</sup>				FBR Plant Influent <sup>1</sup>							
		Flow (gpm)	TA - Cr (TR) (mg/L)	TA - Cr (VI) (mg/L)	TA - ClO <sub>4</sub> (mg/L)	Flow (gpm)	Cr (TR) (mg/L)	Cr (VI) (mg/L)	ClO <sub>4</sub> (mg/L)	Flow (gpm)	TA - ClO <sub>4</sub> (mg/L)	ETI - ClO <sub>4</sub> (mg/L)	TA - ClO <sub>3</sub> (mg/L)	TA - SO <sub>4</sub> (mg/L)	TA - NO <sub>3</sub> - N (mg/L)	TA - Cr (TR) (mg/L)	TA - Cr (VI) (mg/L)
06/01/15	749	67				852						103	170	1,300	6	0.039	0.028
06/02/15	749	68				853						97					
06/03/15	751	67				853						98					
06/04/15	748	66				849						95					
06/05/15	751	67	0.35	ND	970	851						95					
06/06/15	751	69				863					100	99					
06/07/15	747	64				832						103					
06/08/15	751	64				850						103			6	0.034	0.036
06/09/15	747	65				848						106					
06/10/15	752	67				846						97					
06/11/15	749	70	0.27	ND	850	848						95					
06/12/15	750	69				854						99					
06/13/15	749	65				857					110	100					
06/14/15	751	60				705						94					
06/15/15	748	69				454						94			7	0.043	0.029
06/16/15	751	69				660						93					
06/17/15	751	67				790						97					
06/18/15	748	69	0.13	ND	770	545						92					
06/19/15	749	69				857						93					
06/20/15	751	67				857					100	93					
06/21/15	750	68				856						92					
06/22/15	750	72				856						91			6	0.028	0.009
06/23/15	749	71				854						92					
06/24/15	749	68				855						92					
06/25/15	751	62	0.17	ND	880	848						92					
06/26/15	749	54				850						93					
06/27/15	747	55				847					110	95					
06/28/15	750	66				854						91					
06/29/15	750	61				856						93			6	0.021	0.015
06/30/15	749	59				747						88					
Monthly Average	750	66	0.23	ND	868	812					105	95	170	1300	6	0.033	0

Notes:

Flow reported as gpm is a daily average calculated from the totalizer reading.

ND = Not detected above laboratory method detection limit (ClO<sub>4</sub> = 0.5 ug/L; ClO<sub>3</sub> = 10 ug/L; NO<sub>3</sub>-N = 0.055 mg/L, CR(VI) = 0.25 ug/L).

1: ETI = Envirogen internal process control data, TA = TestAmerica data.

2: Following contractual amendment agreements, ETI will begin collecting new analytical samples at the GW-11 influent sample tap.

Table 4 - Treatment Plant Operational Metrics

Nevada Environmental Response Trust   Groundwater Extraction and Treatment System   Enhanced Operational Metrics															
Date	1st Stage FBR Influent			2nd Stage FBR Influent			FBR Plant Effluent <sup>1</sup>								
	Flow (gpm)	pH (s.u.)	ORP (mV)	Flow (gpm)	pH (s.u.)	ORP (mV)	Flow <sup>2</sup> (gpm)	TA - ClO <sub>4</sub> (mg/L)	ETI - ClO <sub>4</sub> (mg/L)	TA - ClO <sub>3</sub> (mg/L)	TA-Cr (TR) (mg/L)	TA-Cr (VI) (mg/L)	TA - SO <sub>4</sub> (mg/L)	TA - NO <sub>3</sub> - N (mg/L)	ETI - Turbidity (NTU)
06/01/15		6.88	-152		6.92	-341	832		ND	ND	ND	1,400	0.95	4	
06/02/15		6.90	-205		6.97	-342	824		ND					5	
06/03/15		6.89	-188		6.93	-358	796		ND					25	
06/04/15		6.90	-361		6.94	-357	788		ND					32	
06/05/15		6.95	-375		6.94	-360	795		ND					2	
06/06/15		6.87	-366		7.04	-373	807	ND	ND					1	
06/07/15		6.45	-113		7.08	-380	836		ND					3	
06/08/15		6.52	-140		6.95	-364	896		ND		0.013		ND	24	
06/09/15		6.55	-129		7.04	-367	870		ND					17	
06/10/15		6.68	-143		6.99	-357	817		ND					10	
06/11/15		6.85	-92		7.09	-366	886		ND					5	
06/12/15		6.65	-113		7.06	-362	773		ND					5	
06/13/15		6.68	-111		7.12	-355	770	ND	ND					2	
06/14/15		6.57	-241		7.27	-366	879		ND					12	
06/15/15		6.74	-102		7.30	-367	863		ND		0.0088		1.5	13	
06/16/15		6.90	-298		7.34	-377	800		ND					8	
06/17/15		6.76	-300		7.35	-383	863		ND					12	
06/18/15		6.95	-336		7.36	-381	868		ND					18	
06/19/15		7.16	-358		7.32	-374	891		ND					10	
06/20/15		7.29	-379		7.25	-361	848	ND	ND					5	
06/21/15		7.35	-356		7.35	-358	788		ND					3	
06/22/15		7.26	-361		7.25	-362	833		ND		0.0068		ND	9	
06/23/15		7.08	-370		7.10	-359	869		ND					7	
06/24/15		7.07	-382		7.04	-362	917		ND					11	
06/25/15		7.09	-355		7.00	-360	859		ND					12	
06/26/15		7.12	-393		7.01	-348	832		ND					17	
06/27/15		7.17	-367		7.02	-354	823	ND	ND					13	
06/28/15		7.12	-373		7.04	-359	841		ND					17	
06/29/15		7.04	-377		7.09	-364	855		ND		0.0061		1.2	9	
06/30/15		6.99	-375		7.03	-351	847		ND					9	
Monthly Average		6.91	-274		7.11	-362	824	ND	ND	ND	0.01	ND	1400	1.22	11

Notes:

Flow reported as gpm is a daily average calculated from the totalizer reading.

ND = Not detected above laboratory method detection limit (ClO<sub>4</sub> = 0.5 ug/L; ClO<sub>3</sub> = 10 ug/L; NO<sub>3</sub>-N= 0.055 mg/L, CR(VI) = 0.25 ug/L).

1: ETI = Envirogen internal process control data, TA = TestAmerica data.

3: Totalizer was reset and as a result the flow valves were estimated for the dates of 6/20/15, 6/21/14 and 6/25/15 using the preceding seven day flow values.

GW-11 Level Monitoring		
Date	Field Measurement (ft)	Volume (MG)
6/11/2015	21.5	47.8
6/25/2015	21.2	48.4

GW-11 Leak Detection Monitoring				
Date	Amount Pumped (gallons)			
	NW Corner	NE Corner	SW Corner	SE Corner
6/11/2015	53	1260	756	99
6/25/2015	0	139	0	76

GW-11 Composite Sample <sup>1</sup>		
Analytes	Concentration	Units
Perchlorate	100	mg/L
Chlorate	210	mg/L
Ammonia as N	0.27	mg/L
Total Phosphorus	0.098	mg/L
Total Dissolved Solids (TDS)	6100	mg/L
Total Suspended Solids (TSS)	55	mg/L
pH	8.27	s.u.
Calcium	320	mg/L
Iron	0.71	mg/L
Chromium (total)	0.045	mg/L
Chromium VI	0.014	mg/L
Chloride	1500	mg/L
Nitrate as N	5.7	mg/L
Sulfate	1300	mg/L

Notes:

ND = Not detected above laboratory method detection limit (NH3-N= 0.1 mg/L; Total P = .025 ug/L).

1: Corner Composite Sample collected on: June 29, 2015 by Envirogen.



Nevada Environmental Response Trust   Groundwater Extraction and Treatment System   Enhanced Operational Metrics						
Date	Flow <sup>1</sup> (gpm)	FBR Influent Concentration			Influent Function Load <sup>2</sup> (lbs/day)	6 Month Rolling Average (lbs/day)
		ClO <sub>4</sub> (mg/L)	NO <sub>3</sub> as N (mg/L)	ClO <sub>3</sub> (mg/L)		
July 2014	786	123	8.8	220	636	636
Aug 2014	880	116	11	190	663	649
Sept 2014	828	120	11	200	649	649
Oct 2014	825	113	12	200	645	648
Nov 2014	828	108	9.4	160	548	628
Dec 2014	785	118	11	210	628	628
Jan 2015	844	84	6.6	190	628	627
Feb 2015	1021	101	7.0	210	542	613
Mar 2015	918	95	7.0	100	445	594
Apr 2015	916	97	7.0	140	523	576
May 2015	858	105	6.1	170	549	582
June 2015	824	108	6.0	170	532	569

Notes:

Concentrations and flow are presented as monthly average.

1: Flow used in loading calculation is average monthly FBR effluent flow to be consistent with historical loading calculations.

2: FBR loading calculated as  $[0.9 \cdot \text{NO}_3 \text{ as N} + 0.17 \cdot \text{ClO}_3 + 0.18 \cdot \text{ClO}_4 \cdot \text{Flow} \cdot 1440 / 1000000 \cdot 8.34]$ .

Figure 1 - GW-11 Pond Volume and Perchlorate Concentration

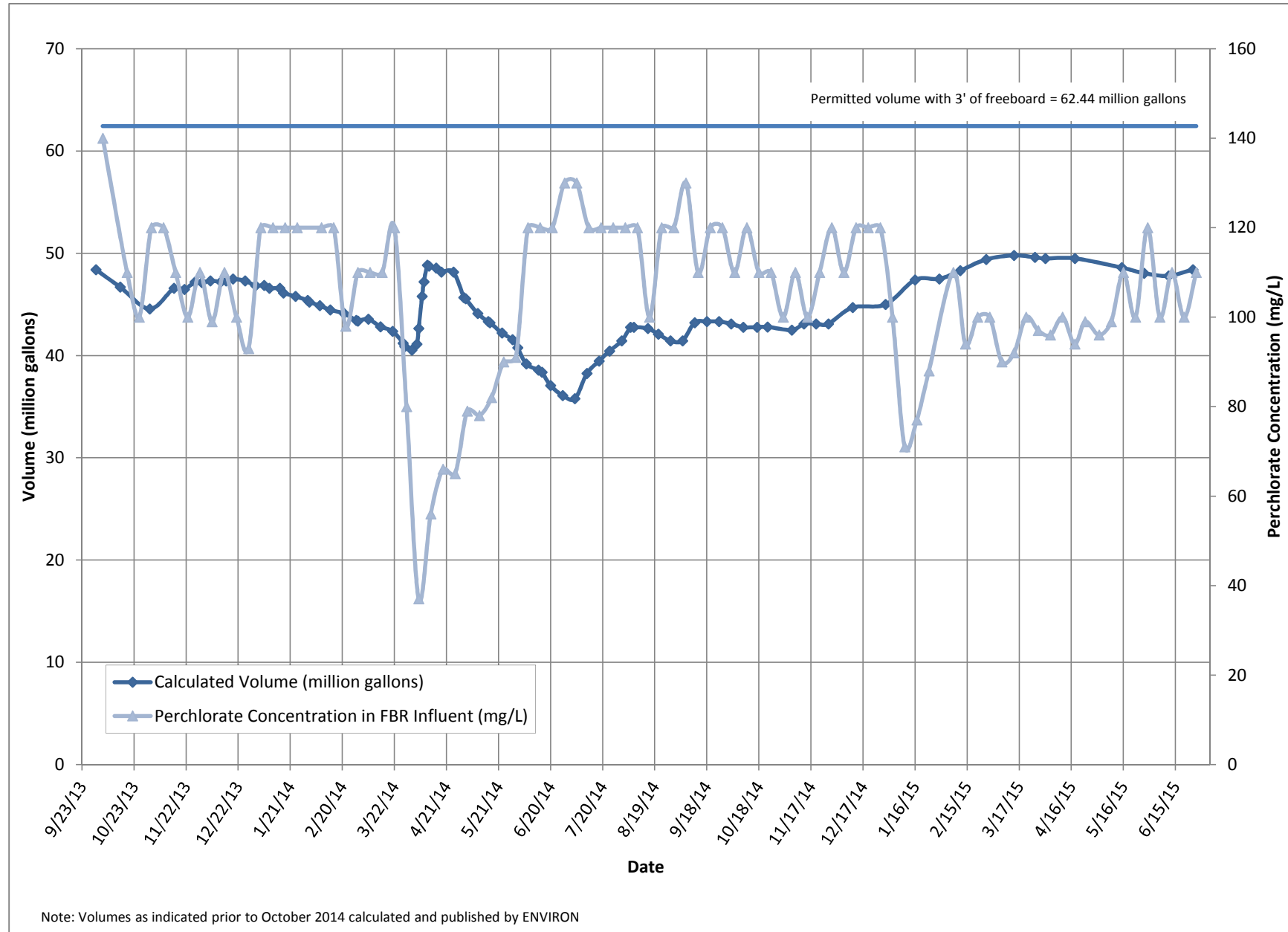


Figure 2 - FBR Equivalent Loading Calculation

