

Table 1 - Seep Well Field (SWF) Operational Metrics

Nevada Environmental Response Trust Groundwater Extraction and Treatment System Enhanced Operational Metrics																			
Date	LS #1 Flow (gpm)	East Well (PC-116R)		Center Well (PC99R2/99R3)		West Well (PC-115R)		PC 117		PC 118		PC 119		PC 120		PC 121		PC 133	
		Flow (gpm)	Level (ft)	Flow (gpm)	Level (ft)	Flow (gpm)	Level (ft)	Flow (gpm)	Level (ft)	Flow (gpm)	Level (ft)	Flow (gpm)	Level (ft)	Flow (gpm)	Level (ft)	Flow (gpm)	Level (ft)	Flow (gpm)	Level (ft)
5/1/2015 ¹	622	139		63		86		107		44		76		0		0		4	
05/02/15	619	131		63		89		94		78		62		0		0		4	
05/03/15	625	135		63		85		94		78		63		0		0		5	
05/04/15	625	136		63		91		94		78		63		0		0		4	
05/05/15	622	136		63		90		93		78		62		0		0.7		4	
05/06/15	624	135		63		90		94		78		63		0		0		4	
05/07/15	625	134		63		90		94		78		63		0		0		4	
05/08/15	624	135		62		89		94		78		63		0		0		4	
05/09/15	625	140		63		89		94		78		63		0		0		4	
05/10/15	624	140		63		89		94		78		63		0		0		4	
05/11/15	625	140		63		89		94		78		63		0		0		4	
05/12/15	627	140		63		89		94		78		63		0		0		4	
05/13/15	623	138		62		89		94		78		63		0		0		4	
05/14/15	626	135		63		88		94		78		63		0		0		4	
05/15/15	626	138		63		89		94		78		63		0		0		4	
05/16/15	623	138		63		87		94		78		63		0		0		4	
05/17/15	626	133		63		89		94		78		63		0		0		4	
05/18/15	625	135		63		89		94		78		63		0		0		4	
05/19/15	623	135		63		87		94		78		63		0		0		4	
05/20/15	624	135		63		88		93		78		63		0		0		4	
05/21/15	625	135		63		88		94		78		63		0		0		4	
05/22/15	625	135		63		88		94		78		63		0		0		5	
05/23/15	625	136		63		89		94		78		63		0		0		4	
05/24/15	625	135		63		87		94		78		63		0		0		4	
05/25/15	625	137		63		88		94		78		63		0		0		4	
05/26/15	625	139		63		88		94		78		63		0		0		4	
05/27/15	623	140		63		86		94		78		62		0		0		4	
05/28/15	626	141		63		88		94		78		63		0		0		4	
05/29/15	625	140		63		88		94		78		63		0		0		4	
05/30/15	625	142		63		87		94		78		63		0		0		4	
05/31/15	625	142		63		86		94		78		63		0		0		4	
Monthly Average	624	137		62		88		94		77		63		0		0		4	
Analytical ²	Conc (mg/L) Date		Conc (mg/L) Date		Conc (mg/L) Date		Conc (mg/L) Date		Conc (mg/L) Date		Conc (mg/L) Date		Conc (mg/L) Date		Conc (mg/L) Date		Conc (mg/L) Date		
Perchlorate	16	5/4/2015	19	5/4/2015	11	5/4/2015	11	5/4/2015	2.7	5/4/2015	0.35	5/4/2015	0.082	5/4/2015	0.35	5/4/2015	11	5/4/2015	
Hexavalent Chromium	Future Metric - Enhanced Operations																		
Total Chromium ³	ND	5/4/2015	0.004	5/4/2015	ND	5/4/2015	ND	5/4/2015	ND	5/4/2015	ND	5/4/2015	ND	5/4/2015	ND	5/4/2015	ND	5/4/2015	

Notes:
 Flow reported as gpm is a daily average calculated from the totalizer reading.
 ND = Not detected above laboratory method detection limit (ClO₄ = 0.5 ug/L; ClO₃ = 10 ug/L; NO₃-N = 0.055 mg/L, CR(VI) = 0.25 ug/L).
 1: While returning seep wells back to normal flows, some wells experienced flow fluctuation due to draw down.
 2: Analytical results are reported from TestAmerica.
 3: Quarterly results, most recent sampling concentrations listed (Samples will be transitioned to monthly reporting in the future).

Table 2 - Athens Road Well Field (AWF) Operational Metrics

Nevada Environmental Response Trust Groundwater Extraction and Treatment System Enhanced Operational Metrics																		
Date	LS #3 Flow (gpm)	ART 1		ART 2		ART 3		ART 4		ART 9 Flow (gpm)	ART 6 Level (ft)	ART 9 Level (ft)	ART 7B		ART 8		PC-150	
		Flow (gpm)	Level (ft)	Flow (gpm)	Level (ft)	Flow (gpm)	Level (ft)	Flow (gpm)	Level (ft)				Flow (gpm)	Level (ft)	Flow (gpm)	Level (ft)	Flow ¹ (gpm)	Level (ft)
05/01/15	250	8		63		44		15		60			29		63		4.5	
05/02/15	249	8		62		44		15		60			29		63		4.5	
05/03/15	250	8		63		44		16		60			29		63		4.5	
05/04/15	250	8		63		44		15		60			29		63		4.5	
05/05/15	249	8		63		44		15		60			29		62		4.5	
05/06/15	249	8		63		44		16		60			29		63		4.5	
05/07/15	250	8		63		44		15		60			29		63		4.5	
05/08/15	250	8		63		44		16		60			29		63		4.5	
05/09/15	250	8		63		44		15		60			29		63		4.5	
05/10/15	250	8		63		43		15		60			29		63		4.5	
05/11/15	631 ¹	8		63		44		16		60			29		63		4.5	
05/12/15	251	8		63		44		15		60			29		63		4.5	
05/13/15	249	8		63		43		16		60			29		63		4.5	
05/14/15	250	8		63		44		15		60			28		63		4.5	
05/15/15	250	8		63		44		16		60			29		63		4.5	
05/16/15	249	8		63		43		15		60			29		63		4.5	
05/17/15	251	8		62		44		15		59			29		62		4.5	
05/18/15	244	8		60		43		15		58			29		60		4.5	
05/19/15	249	8		63		44		16		60			30		63		4.5	
05/20/15	249	8		62		44		16		60			31		63		4.5	
05/21/15	250	8		63		44		15		60			30		63		4.5	
05/22/15	250	8		63		44		16		60			30		63		4.5	
05/23/15	250	8		63		44		16		60			29		63		4.5	
05/24/15	250	8		63		44		15		60			30		63		4.5	
05/25/15	250	8		63		44		16		60			30		63		4.5	
05/26/15	250	8		63		44		16		60			29		63		4.5	
05/27/15	249	8		63		44		15		60			30		62		4.5	
05/28/15	250	8		63		44		16		60			29		63		4.5	
05/29/15	250	8		63		44		16		60			30		63		4.5	
05/30/15	250	8		63		44		16		60			29		63		4.5	
05/31/15	250	8		63		44		16		62			29		63		4.5	
Monthly Average	262	8		62		44		16		60			29		62		4.5	
Analytical ²		Conc (mg/L)	Date	Conc (mg/L)	Date	Conc (mg/L)	Date	Conc (mg/L)	Date	ART-6 (mg/L)	ART-9 (mg/L)	Date	Conc (mg/L)	Date	Conc (mg/L)	Date	Conc (mg/L)	Date
Perchlorate		17	5/4/2015	39	5/4/2015	230	5/4/2015	260	5/4/2015	34	220	5/4/2015	150	5/4/2015	130	5/4/2015	220	5/4/2015
Hexavalent Chromium		Future Metric - Enhanced Operations																
Total Chromium ³		ND	5/4/2015	0.014	5/4/2015	0.33	5/4/2015	0.46	5/4/2015	0.13	0.88	5/4/2015	0.77	5/4/2015	0.17	5/4/2015	0.29	5/4/2015

Notes:
 Flow reported as gpm is a daily average calculated from the totalizer reading.
 1: LS#3 flow meter was shut off and restarted.
 2: Analytical results are reported from TestAmerica.
 3: Quarterly results, most recent sampling concentrations listed (Samples will be transitioned to monthly reporting in the future).

Table 3 - Interceptor Well Field (IWF) Operational Metrics

Nevada Environmental Response Trust Groundwater Extraction and Treatment System Enhanced Operational Metrics																				
Date	I-AR		I-AA		I-AB		I-AC		I-AD		I-B		I-C		I-D		I-E		I-F	
	Flow (gpm)	Level (ft)	Flow (gpm)	Level (ft)	Flow (gpm)	Level (ft)	Flow (gpm)	Level (ft)	Flow (gpm)	Level (ft)	Flow (gpm)	Level (ft)	Flow (gpm)	Level (ft)	Flow (gpm)	Level (ft)	Flow (gpm)	Level (ft)	Flow (gpm)	Level (ft)
05/01/15	0.72		1.39		0.00		0.00		0.00		1.07		4.71		1.78		1.12		3.47	
05/02/15	0.72		1.36		0.00		0.00		0.00		1.11		4.72		1.78		1.13		3.47	
05/03/15	0.73		1.36		0.00		0.00		0.00		1.03		4.70		1.77		1.12		3.81	
05/04/15	0.75		1.25		0.00		0.00		0.00		1.09		4.86		1.76		1.12		4.62	
05/05/15	0.75		1.23		0.00		0.00		0.00		1.09		5.43		1.75		1.14		4.75	
05/06/15	0.75		1.24		0.00		0.00		0.00		1.01		5.54		1.72		1.11		4.91	
05/07/15	0.75		1.28		0.00		0.00		0.00		1.08		5.49		1.77		1.11		4.34	
05/08/15	0.73	Future Metric - Enhanced Operations	1.20	Future Metric - Enhanced Operations	0.00	Future Metric - Enhanced Operations	0.00	Future Metric - Enhanced Operations	0.00	Future Metric - Enhanced Operations	1.05	Future Metric - Enhanced Operations	5.33	Future Metric - Enhanced Operations	1.75	Future Metric - Enhanced Operations	1.08	Future Metric - Enhanced Operations	4.75	Future Metric - Enhanced Operations
05/09/15	0.75		1.35		0.00		0.00		0.00		1.04		5.40		1.76		1.12		4.73	
05/10/15	0.75		1.34		0.00		0.00		0.00		1.06		5.34		1.76		1.13		4.75	
05/11/15	0.74		1.37		0.00		0.00		0.00		1.02		5.41		1.77		1.15		4.78	
05/12/15	0.75		1.36		0.00		0.00		0.00		1.08		5.31		1.76		1.17		4.73	
05/13/15 ³	0.75		1.37		0.40		0.02		0.03		1.00		5.23		1.76		1.18		4.77	
05/14/15	0.74		1.35		0.00		0.00		0.00		1.04		5.24		1.76		1.16		4.70	
05/15/15	0.75		1.36		0.00		0.00		0.00		1.08		5.22		1.75		1.19		4.13	
05/16/15	0.75		1.34		0.00		0.00		0.00		1.00		5.15		1.74		1.05		3.90	
05/17/15	0.77		1.33		0.00		0.00		0.00		1.04		4.90		1.67		1.05		3.70	
05/18/15	0.74		1.35		0.00		0.00		0.00		1.07		5.15		1.74		1.19		3.93	
05/19/15	0.74		1.38		0.00		0.00		0.00		1.03		5.26		1.75		1.18		4.34	
05/20/15	0.73		1.34		0.00		0.00		0.00		0.98		5.21		1.70		1.19		4.15	
05/21/15	0.74		1.36		0.00		0.00		0.00		1.05		5.35		1.71		1.22		3.87	
05/22/15	0.74		1.33		0.00		0.00		0.00		1.04		5.09		1.69		1.15		3.85	
05/23/15	0.74		1.35		0.00		0.00		0.00		1.00		5.24		1.71		1.16		3.79	
05/24/15	0.73		1.35		0.00		0.00		0.00		0.99		5.27		1.71		1.16		3.76	
05/25/15	0.74		1.35		0.00		0.00		0.00		1.09		5.60		1.73		1.21		4.45	
05/26/15	0.61 ⁴		1.30		0.00		0.00		0.00		0.96		5.52		1.68		1.08		4.07	
05/27/15	0.85		1.29		0.00		0.00		0.00		1.04		5.56		1.70		1.03		3.75	
05/28/15	0.80		1.26		0.00		0.00		0.00		0.99		5.57		1.70		1.12		3.85	
05/29/15	0.77		1.27		0.00		0.00		0.00		1.03		5.73		1.68		1.17		3.74	
05/30/15	0.73		1.16		0.00		0.00		0.00		1.04		5.43		1.70		1.19		3.78	
05/31/15	0.74		0.83 ⁵		0.00		0.00		0.00		1.00		5.58		1.69		1.11		3.69	
Monthly Average	0.75		1.32		0.01		0.00		0.00		1.04		5.28		1.73		1.14		4.17	
Analytical ¹	Conc (mg/L)	Date	Conc (mg/L)	Date	Conc (mg/L)	Date	Conc (mg/L)	Date	Conc (mg/L)	Date	Conc (mg/L)	Date	Conc (mg/L)	Date	Conc (mg/L)	Date	Conc (mg/L)	Date	Conc (mg/L)	Date
Perchlorate ²	2500	5/4/2015	110	5/4/2015	500	5/4/2015	79	5/29/2015	130	5/29/2015	730	5/4/2015	940	5/4/2015	710	5/4/2015	740	5/4/2015	1200	5/4/2015
Hexavalent Chromium	Future Metric - Enhanced Operations																			
Total Chromium ²	0.46	5/4/2015	0.43	5/4/2015	ND	5/4/2015	0.59	5/29/2015	1.1	5/29/2015	0.17	5/4/2015	3.1	5/4/2015	5.8	5/4/2015	9.1	5/4/2015	18	5/4/2015

Notes:

- Flow reported as gpm is a daily average calculated from the totalizer reading.
- 1: Analytical results are reported from TestAmerica.
- 2: Quarterly results, most recent sampling concentrations listed (Samples will be transitioned to monthly reporting in the future).
- 3: I-AB, AC, AD totalizer readings increased due to turning on pumps for sampling.
- 4: I-AR reading was collected earlier in the day on 05/27 resulting in a lower flow calculation for 05/26.
- 5: I-AA pipes were corroded and affecting flow, but have been repaired.

Nevada Environmental Response Trust Groundwater Extraction and Treatment System Enhanced Operational Metrics																				
Date	I-G		I-H		I-I		I-J		I-K		I-L		I-M		I-N		I-O		I-P	
	Flow (gpm)	Level (ft)	Flow (gpm)	Level (ft)	Flow (gpm)	Level (ft)	Flow (gpm)	Level (ft)	Flow (gpm)	Level (ft)	Flow (gpm)	Level (ft)	Flow (gpm)	Level (ft)	Flow (gpm)	Level (ft)	Flow (gpm)	Level (ft)	Flow (gpm)	Level (ft)
05/01/15	0.16		0.90		4.80		6.48		3.97		3.36		2.33		2.59		1.48		1.93	
05/02/15	0.18		0.89		4.94		6.76		4.15		3.36		2.36		2.58		1.45		1.90	
05/03/15	0.18		0.84		4.65		6.36		3.91		3.33		2.32		2.67		1.42		1.85	
05/04/15	0.18		0.84		4.86		6.57		4.05		3.36		2.37		3.00		1.43		1.87	
05/05/15	0.16		0.87		4.73		6.40		3.96		3.35		2.38		3.11		1.44		1.87	
05/06/15	0.15		0.88		4.36		5.90		3.65		3.31		2.31		3.13		1.38		1.82	
05/07/15	0.16		0.83		5.48		7.41		4.58		3.38		2.39		3.27		1.42		1.86	
05/08/15	0.17		0.84		4.92		6.63		4.09		3.29		2.30		3.21		1.37		1.80	
05/09/15	0.18		0.85		4.90		6.59		4.09		3.31		2.37		3.25		1.37		1.80	
05/10/15	0.17		0.83		4.81		6.48		3.99		3.26		2.37		3.24		1.37		1.79	
05/11/15	0.17		0.84		4.85		6.53		4.03		3.31		2.41		3.27		1.39		1.80	
05/12/15	0.16		0.82		4.86		6.52		4.00		3.26		2.40		3.27		1.36		1.80	
05/13/15	0.17		0.83		4.84		6.50		3.98		3.24		2.38		3.27		1.36		1.79	
05/14/15	0.17		0.84		4.82		6.49		3.96		3.21		2.36		3.08		1.35		1.79	
05/15/15	0.16		0.83		4.84		6.49		3.96		3.17		2.36		2.76		1.36		1.78	
05/16/15	0.17		0.85		4.90		6.55		4.00		3.11		2.43		2.68		1.35		1.79	
05/17/15	0.16		0.81		4.64		6.30		3.85		3.10		2.30		2.56		1.31		1.73	
05/18/15	0.16		0.82		4.79		6.48		3.94		3.14		2.42		2.72		1.33		1.80	
05/19/15	0.17		0.83		4.77		6.43		3.91		3.10		2.45		2.84		1.32		1.80	
05/20/15	0.15		0.80		4.93		6.64		4.03		3.06		2.42		2.78		1.28		1.74	
05/21/15	0.17		0.82		4.87		6.51		3.96		3.16		2.40		2.68		1.29		1.76	
05/22/15	0.17		0.81		4.74		6.41		3.91		3.10		2.37		2.63		1.31		1.75	
05/23/15	0.17		0.81		4.86		6.51		3.95		3.14		2.43		2.66		1.32		1.76	
05/24/15	0.17		0.79		4.87		6.52		3.95		3.19		2.46		2.65		1.30		1.76	
05/25/15	0.17		0.81		4.79		6.39		3.88		3.21		2.51		2.85		1.31		1.78	
05/26/15	0.17		0.78		4.01		5.34		3.24		3.07		2.44		2.77		1.27		1.73	
05/27/15 ⁶	0.18		0.80		5.60		7.49		4.53		3.12		2.44		2.68		1.30		1.74	
05/28/15	0.17		0.80		4.53		6.98		4.25		3.12		2.45		2.68		1.29		1.74	
05/29/15	0.17		0.79		5.07		6.68		4.04		3.30		2.45		2.66		1.30		1.74	
05/30/15	0.17		0.80		4.78		6.33		3.86		3.14		2.48		2.70		1.31		1.75	
05/31/15	0.18		0.79		4.90		6.51		3.96		3.20		2.46		2.66		1.29		1.72	
Monthly Average	0.17		0.83		4.83		6.52		3.99		3.22		2.40		2.87		1.35		1.79	
Analytical ¹	Conc (mg/L)	Date	Conc (mg/L)	Date	Conc (mg/L)	Date	Conc (mg/L)	Date	Conc (mg/L)	Date	Conc (mg/L)	Date	Conc (mg/L)	Date	Conc (mg/L)	Date	Conc (mg/L)	Date	Conc (mg/L)	Date
Perchlorate ²	930	5/4/2015	2100	5/4/2015	780	5/29/2015	340	5/29/2015	240	5/29/2015	1000	5/4/2015	960	5/4/2015	1100	5/4/2015	1200	5/4/2015	1400	5/4/2015
Hexavalent Chromium	Future Metric - Enhanced Operations																			
Total Chromium ²	13	5/4/2015	21	5/4/2015	10	5/29/2015	3	5/29/2015	1.8	5/29/2015	0.83	5/4/2015	7.8	5/4/2015	9.4	5/4/2015	16	5/4/2015	19	5/4/2015

Notes:
 Flow reported as gpm is a daily average calculated from the totalizer reading.
 1: Analytical results are reported from TestAmerica.
 2: Quarterly results, most recent sampling concentrations listed (Samples will be transitioned to monthly reporting in the future).
 6: Well readings were collected earlier in the day for wells I-I, I-J, I-K on 05/27 resulting in a lower flow calculation for 05/26.

Table 3 - Interceptor Well Field (IWF) Operational Metrics

Nevada Environmental Response Trust Groundwater Extraction and Treatment System Enhanced Operational Metrics																				
Date	I-Q		I-R		I-S		I-T		I-U		I-V		I-W		I-X		I-Y		I-Z	
	Flow (gpm)	Level (ft)	Flow (gpm)	Level (ft)	Flow (gpm)	Level (ft)	Flow (gpm)	Level (ft)	Flow (gpm)	Level (ft)	Flow (gpm)	Level (ft)	Flow (gpm)	Level (ft)	Flow ⁷ (gpm)	Level (ft)	Flow (gpm)	Level (ft)	Flow (gpm)	Level (ft)
05/01/15	0.42		2.36		4.44		0.44		1.01		4.51		0.58		2.94		1.64		6.95	
05/02/15	0.42		2.37		4.42		0.37		1.03		4.71		0.65		2.94		1.63		7.24	
05/03/15	0.42		2.34		4.40		0.44		1.01		4.41		0.57		1.04		1.60		6.79	
05/04/15	0.43		2.39		4.62		0.45		1.02		4.62		0.55		0.29		1.62		7.02	
05/05/15	0.44		2.38		4.54		0.39		1.03		4.48		0.39		0.28		1.61		6.81	
05/06/15	0.43		2.34		4.42		0.24		1.00		4.13		0.40		0.30		1.60		6.28	
05/07/15	0.45		2.39		4.51		0.42		1.01		5.21		0.48		0.28		1.63		7.88	
05/08/15	0.44		2.34		4.46		0.44		0.98		4.67		0.65		0.29		1.58		7.06	
05/09/15	0.44		2.36		4.56		0.40		0.99		4.63		0.64		0.30		1.58		7.00	
05/10/15	0.45		2.34		4.53		0.46		1.00		4.56		0.57		0.28		1.56		6.87	
05/11/15	0.45		2.35		4.57		0.41		1.00		4.59		0.51		0.30		1.60		6.91	
05/12/15	0.44		2.36		4.53		0.43		0.99		4.60		0.09		0.27		1.58		6.91	
05/13/15	0.45		2.35		4.54		0.38		1.00		4.57		0.20		0.30		1.58		6.86	
05/14/15	0.45		2.35		4.53		0.48		1.00		4.57		0.43		NA		1.49		6.86	
05/15/15	0.42		2.35		4.57		0.40		0.99		4.56		0.66		2.28		1.50		6.85	
05/16/15	0.42		2.32		4.54		0.41		0.99		4.61		0.64		2.34		1.49		6.68	
05/17/15	0.41		2.33		4.41		0.44		0.96		4.43		0.46		1.90		1.48		6.85	
05/18/15	0.41		2.35		4.77		0.43		0.97		4.56		0.65		2.69		1.52		6.87	
05/19/15	0.43		2.38		4.95		0.41		0.98		4.54		0.53		0.16		1.53		6.79	
05/20/15	0.41		2.32		4.71		0.42		0.96		4.67		0.24		2.33		1.49		7.00	
05/21/15	0.41		2.35		4.69		0.42		0.97		4.60		0.40		2.14		1.51		6.86	
05/22/15	0.42		2.32		4.60		0.00		0.98		4.50		0.54		2.17		1.50		6.77	
05/23/15	0.42		2.35		4.68		0.50		0.97		4.59		0.33		2.12		1.50		6.85	
05/24/15	0.42		2.35		4.65		0.40		0.97		4.60		0.30		2.18		1.48		6.85	
05/25/15	0.42		2.37		4.69		0.47		0.98		4.50		0.29		0.25		1.51		6.71	
05/26/15	0.41		2.31		4.55		0.42		0.96		3.76		0.19		2.32		1.47		5.61	
05/27/15 ⁸	0.42		2.36		4.62		0.40		0.97		5.26		0.14		2.24		1.49		7.83	
05/28/15	0.41		2.38		4.66		0.40		0.97		4.86		0.49		2.18		1.50		7.27	
05/29/15	0.41		2.46		4.78		0.45		0.96		4.74		0.37		2.19		1.54		6.99	
05/30/15	0.41		2.28		4.45		0.44		0.96		4.44		0.43		2.11		1.44		6.60	
05/31/15	0.41		2.35		4.65		0.38		0.95		4.56		0.54		2.25		1.46		6.78	
Monthly Average	0.43		2.35		4.58		0.41		0.99		4.58		0.45		1.46		1.54		6.89	
Analytical ¹	Conc (mg/L)	Date	Conc (mg/L)	Date	Conc (mg/L)	Date	Conc (mg/L)	Date	Conc (mg/L)	Date	Conc (mg/L)	Date	Conc (mg/L)	Date	Conc (mg/L)	Date	Conc (mg/L)	Date	Conc (mg/L)	Date
Perchlorate ²	2000	5/4/2015	1700	5/4/2015	730	5/4/2015	2000	5/4/2015	2000	5/4/2015	1100	5/29/2015	1500	5/4/2015	1600	5/4/2015	1500	5/4/2015	400	5/29/2015
Hexavalent Chromium	Future Metric - Enhanced Operations																			
Total Chromium ²	23	5/4/2015	0.5	5/4/2015	1.7	5/4/2015	25	5/4/2015	23	5/4/2015	10	5/29/2015	16	5/4/2015	12	5/4/2015	0.9	5/4/2015	7.4	5/29/2015

Notes:

- Flow reported as gpm is a daily average calculated from the totalizer reading. NA = Not Available
- 1: Analytical results are reported from TestAmerica.
- 2: Quarterly results, most recent sampling concentrations listed (Samples will be transitioned to monthly reporting in the future).
- 7: I-X flow meter experienced problems from 05/04 to 05/13. Well I-X was shut off on 5/14 and flow meter replaced.
- 8: Well readings were collected earlier in the day for well I-V and I-Z on 05/27 resulting in a lower flow calculation for 05/26.

Table 4 - Treatment Plant Operational Metrics

Nevada Environmental Response Trust Groundwater Extraction and Treatment System Enhanced Operational Metrics																	
Date	LS #2	GWTP Effluent				GW-11 Influent ³				FBR Plant Influent ¹							
	Flow (gpm)	Flow (gpm)	TA - Cr (TR) (mg/L)	TA - Cr (VI) (mg/L)	TA - ClO ₄ (mg/L)	Flow ² (gpm)	Cr (TR) (mg/L)	Cr (VI) (mg/L)	ClO ₄ (mg/L)	Flow (gpm)	TA - ClO ₄ (mg/L)	ETI - ClO ₄ (mg/L)	TA - ClO ₃ (mg/L)	TA - SO ₄ (mg/L)	TA - NO ₃ - N (mg/L)	TA-Cr (TR) (mg/L)	TA-Cr (VI) (mg/L)
05/01/15	749	68				855						98					
05/02/15	749	65				859						98					
05/03/15	750	76				853					96	98					
05/04/15	749	65				857						98	170	1,200	6	0.038	22.000
05/05/15	747	72				857						98					
05/06/15	749	72				857						98					
05/07/15	750	73	0.93	ND	930	858						99					
05/08/15	749	74				858						97					
05/09/15	750	73				855					99	96					
05/10/15	750	72				857						98					
05/11/15	749	72				860						92					
05/12/15	753	71				859						99			6	0.031	25.000
05/13/15	748	70				859						99					
05/14/15	750	70	0.16	ND	1100	858						100					
05/15/15	751	69				856						100					
05/16/15	748	71				856					110	100					
05/17/15	751	67				857						100					
05/18/15	751	78				858						100			6	0.043	33.000
05/19/15	747	76				852						101					
05/20/15	748	78				856						92					
05/21/15	750	75	0.40	ND	860	856						93					
05/22/15	751	73				856						95					
05/23/15	749	76				856					100	NA ²					
05/24/15	750	76				857						103					
05/25/15	751	73				856						103					
05/26/15	750	76				856						104			7	0.046	36.000
05/27/15	747	72				855						104					
05/28/15	751	71	3.50	ND	870	853						98					
05/29/15	750	70				854						105					
05/30/15	750	70				852					120	105					
05/31/15	750	70				852						103					
Monthly Average	750	72	1.25	ND	940	856					105	99	170	1200.000	6	0.040	29

Notes:
 Flow reported as gpm is a daily average calculated from the totalizer reading.
 ND = Not detected above laboratory method detection limit (ClO₄ = 0.5 ug/L; ClO₃ = 10 ug/L; NO₃-N= 0.055 mg/L, CR(VI) = 0.25 ug/L).
 1: ETI = Envirogen internal process control data, TA = TestAmerica data.
 2: NA=Not Available
 3: Tetra Tech is currently working with ETI to create a sampling plan to collect daily ClO₄ samples and monthly Cr(TR), Cr(VI) and ClO₄ samples.

Table 4 - Treatment Plant Operational Metrics

Nevada Environmental Response Trust Groundwater Extraction and Treatment System Enhanced Operational Metrics																
Date	1st Stage FBR Influent			2nd Stage FBR Influent			FBR Plant Effluent ¹									
	Flow (gpm)	pH (s.u.)	ORP (mV)	Flow (gpm)	pH (s.u.)	ORP (mV)	Flow (gpm)	TA - ClO ₄ (mg/L)	ETI - ClO ₄ (mg/L)	TA - ClO ₃ (mg/L)	TA-Cr (TR) (mg/L)	TA-Cr (VI) (mg/L)	TA - SO ₄ (mg/L)	TA - NO ₃ - N (mg/L)	ETI - Turbidity (NTU)	
05/01/15	Future Metric - Enhanced Operations	7	-436	Future Metric - Enhanced Operations	7	-359	880								5	
05/02/15		7	-435		7	-357	870	ND	ND							8
05/03/15		7	-433		7	-357	843									5
05/04/15		7	-427		7	-358	854			ND	0.0046	ND		1,300	ND	6
05/05/15		7	-427		7	-357	872									6
05/06/15		7	-426		7	-359	890									9
05/07/15		7	-422		7	-360	369 ⁴									7
05/08/15		7	-417		7	-357	882									17
05/09/15		7	-419		7	-353	893	ND								18
05/10/15		7	-424		7	-353	893									48
05/11/15		7	-429		7	-357	874									51
05/12/15		7	-431		7	-357	868				0.005	ND			ND	55
05/13/15		7	-432		7	-361	865									7
05/14/15		7	-432		7	-357	885									13
05/15/15		7	-427		7	-347	887									7
05/16/15		7	-430		7	-353	888	ND								9
05/17/15		7	-433		7	-348	880									6
05/18/15		7	-429		7	-338	870					0.006	0.34		1.8	4
05/19/15		7	-436		7	-345	872									4
05/20/15		7	-312		7	-352	886									4
05/21/15		7	-322		7	-367	888									8
05/22/15		7	-345		7	-365	886									17
05/23/15		7	-355		7	-360	884	ND								NA ⁵
05/24/15		7	-358		7	-357	868									7
05/25/15		7	-361		7	-356	871									14
05/26/15		7	-360		7	-357	869					0.0046	ND		2.1	4
05/27/15		7	-348		7	-358	878									3
05/28/15		7	-349		7	-349	881									3
05/29/15	7	-291	7	-343	838	ND								3		
05/30/15	7	-157	7	-307	856									1		
05/31/15	7	-177	7	-327	852									2		
Monthly Average		7	-383		7	-353	858	ND	ND	ND	0.00	ND	1300	1.95	12	

Notes:
 Flow reported as gpm is a daily average calculated from the totalizer reading.
 ND = Not detected above laboratory method detection limit (ClO₄ = 0.5 ug/L; ClO₃ = 10 ug/L; NO₃-N = 0.055 mg/L, CR(VI) = 0.25 ug/L).
 1: ETI = Envirogen internal process control data, TA = TestAmerica data.
 4: Flow diverted for repair of effluent pipe at north side of EQ area.
 5: NA= Not Available

GW-11 Level Monitoring		
Date	Field Measurement (ft)	Volume (MG)
5/15/2015	21.0	48.6
5/28/2015	21.4	48.1

GW-11 Leak Detection Monitoring				
Date	Amount Pumped (gallons)			
	NW Corner	NE Corner	SW Corner	SE Corner
5/15/2015	1250	5100	750	375
5/28/2015	114	1699	1140	143

GW-11 Composite Sample ¹		
Analytes	Concentration	Units
Perchlorate	110	mg/L
Chlorate	180	mg/L
Ammonia as N	0.11	mg/L
Total Phosphorus	ND	mg/L
Total Dissolved Solids (TDS)	5500	mg/L
Total Suspended Solids (TSS)	5	mg/L
pH	8.56	s.u.
Calcium	280	mg/L
Iron	0.4	mg/L
Chromium (total)	0.043	mg/L
Chromium VI	0.033	mg/L
Chloride	1500	mg/L
Nitrate as N	6.6	mg/L
Sulfate	1300	mg/L

Notes:

1: Corner Composite Sample collected on: May 29, 2015 by Envirogen. ND = Not detected above laboratory method detection limit (NH₃-N= 0.1 mg/L; Total P = .025 ug/L).

Nevada Environmental Response Trust Groundwater Extraction and Treatment System Enhanced Operational Metrics						
Date	Flow ¹ (gpm)	FBR Influent Concentration			Influent Function Load ² (lbs/day)	6 Month Rolling Average (lbs/day)
		ClO ₄ (mg/L)	NO ₃ as N (mg/L)	ClO ₃ (mg/L)		
June 2014	906	123	9.0	220	735	735
July 2014	786	123	8.8	220	636	686
Aug 2014	880	116	11	190	663	678
Sept 2014	828	120	11	200	649	671
Oct 2014	825	113	12	200	645	666
Nov 2014	828	108	9.4	160	548	646
Dec 2014	785	118	11	210	628	628
Jan 2015	844	84	6.6	190	628	627
Feb 2015	1021	101	7.0	210	542	613
Mar 2015	918	95	7.0	100	445	594
Apr 2015	916	97	7.0	140	523	576
May 2015	858	105	6.1	170	549	573

Notes:

Concentrations and flow are presented as monthly average.

1: Flow used in loading calculation is average monthly FBR effluent flow to be consistent with historical loading calculations.

2: FBR loading calculated as $[0.9 \cdot \text{NO}_3 \text{ as N} + 0.17 \cdot \text{ClO}_3 + 0.18 \cdot \text{ClO}_4 \cdot \text{Flow} \cdot 1440 / 1000000 \cdot 8.34]$.

Figure 1 - GW-11 Pond Volume and Perchlorate Concentration

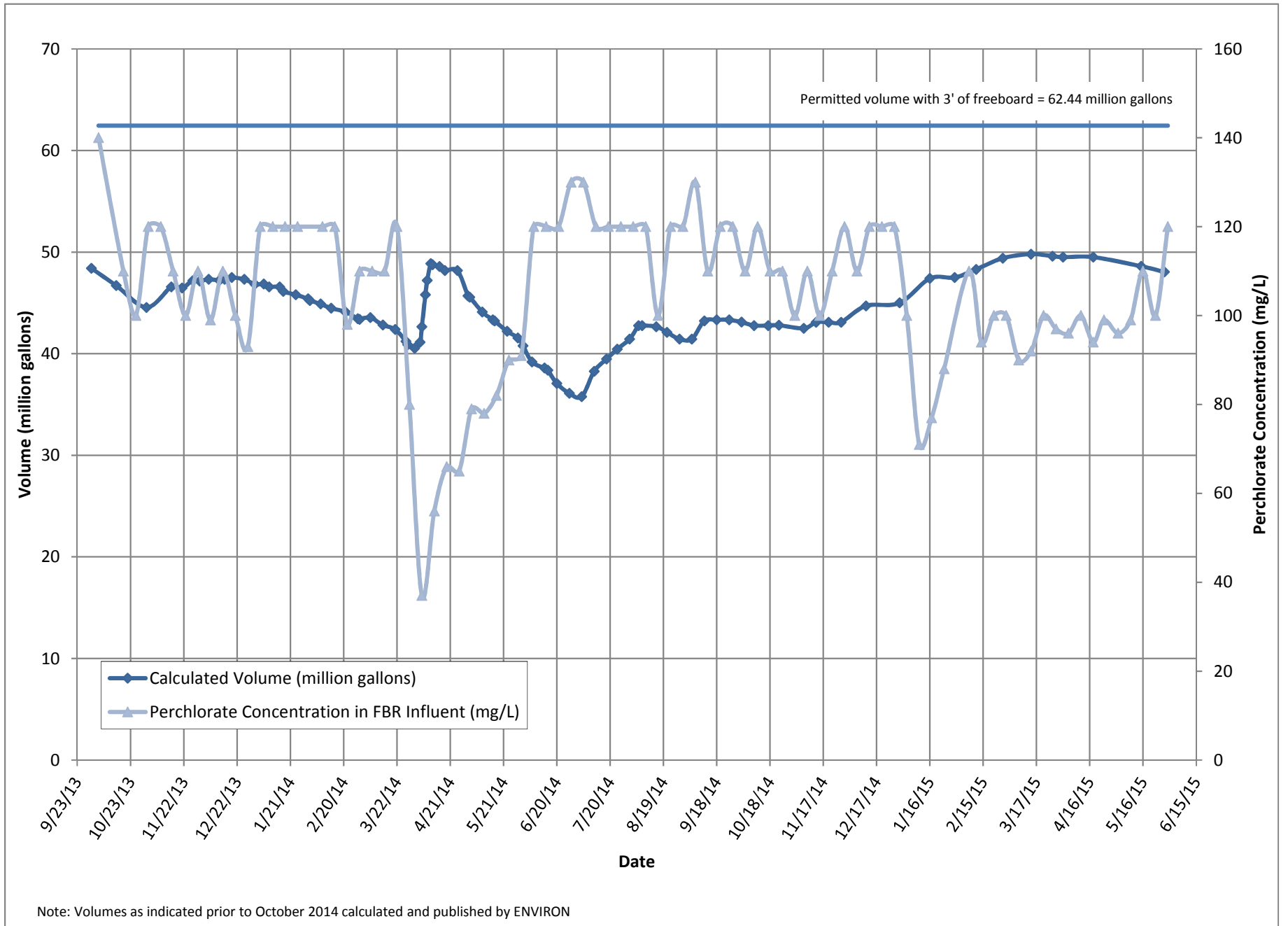


Figure 2 - FBR Equivalent Loading Calculation

