

Table 1 - Seep Well Field (SWF) Operational Metrics

Nevada Environmental Response Trust   Groundwater Extraction and Treatment System   Enhanced Operational Metrics																											
Date	LS #1	East Well (PC-116R)		Center Well (PC99R2/99R3)		West Well (PC-115R)		PC 117		PC 118		PC 119		PC 120		PC 121		PC 133 <sup>1</sup>									
	Flow (gpm)	Flow (gpm)	Level (ft)	Flow (gpm)	Level (ft)	Flow (gpm)	Level (ft)	Flow (gpm)	Level (ft)	Flow (gpm)	Level (ft)	Flow (gpm)	Level (ft)	Flow (gpm)	Level (ft)	Flow (gpm)	Level (ft)	Flow (gpm)	Level (ft)								
11/01/14	653	131		65		105		98		82		65		0		0		4									
11/02/14	623	124		63		99		94		78		63		0		0		4									
11/03/14	626	125		62		99		94		78		62		0		0		4									
11/04/14	624	125		63		99		94		78		63		0		0		4									
11/05/14	624	125		62		100		94		78		62		0		0		4									
11/06/14	626	125		62		99		94		78		63		0		0		4									
11/07/14	624	125		62		100		93		78		62		0		0		4									
11/08/14	624	125		63		99		94		78		62		0		0		4									
11/09/14	623	125		62		101		93		78		63		0		0		4									
11/10/14	627	125		63		99		94		78		62		0		0		4									
11/11/14	625	126		62		101		94		78		63		0		0		4									
11/12/14	623	125		62		100		93		78		62		0		0		4									
11/13/14	626	125		62		100		94		78		62		0		0		4									
11/14/14	624	124		62		99		93		77		62		0		0		4									
11/15/14	620	124		62		98		93		78		62		0		0		4									
11/16/14	630	126		63		99		94		78		63		0		0		4									
11/17/14	623	126		63		98		94		78		63		0		0		4									
11/18/14	626	125		63		99		94		78		62		0		0		4									
11/19/14	624	125		62		97		93		78		63		0		0		4									
11/20/14	626	125		62		99		94		78		62		0		0		4									
11/21/14	624	125		62		98		93		78		62		0		0		4									
11/22/14	622	124		62		99		94		78		62		0		0		4									
11/23/14	628	126		63		97		94		78		63		0		0		4									
11/24/14	624	125		63		98		94		78		63		0		0		4									
11/25/14	625	125		62		97		94		78		62		0		0		4									
11/26/14	623	124		62		97		93		77		63		0		0		4									
11/27/14	625	125		63		98		93		78		62		0		0		4									
11/28/14	625	125		63		97		94		78		63		0		0		4									
11/29/14	623	125		62		98		94		78		62		0		0		4									
11/30/14	626	125		63		91		94		78		63		0		0		4									
Monthly Average	626	125		63		99		94		78		63		0		0		4									
Analytical <sup>2</sup>	Conc (mg/L)		Date	Conc (mg/L)		Date	Conc (mg/L)		Date	Conc (mg/L)		Date	Conc (mg/L)		Date	Conc (mg/L)		Date	Conc (mg/L)		Date						
Perchlorate	15		11/3/2014	17		11/3/2014	9.9		11/3/2014	9.3		11/3/2014	2.6		11/3/2014	0.4		11/3/2014	0.17		11/3/2014	0.27		11/3/2014	8.3		11/3/2014
Hexavalent Chromium	Future Metric - Enhanced Operations																										
Total Chromium <sup>3</sup>	0.0025		11/3/2014	0.0033		11/3/2014	ND		11/3/2014	ND		11/3/2014	ND		11/3/2014	ND		11/3/2014	ND		11/3/2014	ND		11/3/2014	ND		11/3/2014

Notes:  
 Flow reported as gpm is a daily average calculated from the totalizer reading  
 ND = Not detected above laboratory method detection limit (ClO<sub>2</sub> = 0.5 ug/L; ClO<sub>3</sub> = 10 ug/L; NO<sub>3</sub>-N = 0.055 mg/L, CR(VI) = 0.25 ug/L)  
 1: Flow estimated for PC-133 from 11/1 - 11/28  
 2: Analytical results are reported from TestAmerica  
 3: Quarterly results, most recent sampling concentrations listed (Samples will be transitioned to monthly reporting in the future)

Table 2 - Athens Road Well Field (AWF) Operational Metrics

Nevada Environmental Response Trust   Groundwater Extraction and Treatment System   Enhanced Operational Metrics																						
Date	LS #3 Flow (gpm)	ART 1		ART 2		ART 3		ART 4		ART 6 / ART 9		ART 6		ART 9		ART 7B		ART 8		PC-150 <sup>3</sup>		
		Flow (gpm)	Level (ft)	Flow (gpm)	Level (ft)	Flow (gpm)	Level (ft)	Flow (gpm)	Level (ft)	Flow (gpm)	Level (ft)	Flow (gpm)	Level (ft)	Flow (gpm)	Level (ft)	Flow (gpm)	Level (ft)	Flow (gpm)	Level (ft)	Flow (gpm)	Level (ft)	
11/01/14	327	24		66		48		16		53		33		66		NA		NA		NA		
11/02/14	312	24		63		46		16		51		32		62		NA		NA		NA		
11/03/14	313	24		62		46		16		50		31		63		NA		NA		NA		
11/04/14	313	23		63		46		17		51		31		62		NA		NA		NA		
11/05/14	312	23		62		46		15		54		32		63		NA		NA		NA		
11/06/14	311	23		63 <sup>1</sup>		45		16		52 <sup>1</sup>		31		77 <sup>1</sup>		NA		NA		NA		
11/07/14	253	23		62 <sup>1</sup>		43		15		52 <sup>1</sup>		29		77 <sup>1</sup>		NA		NA		NA		
11/08/14	271	24	Future Metric - Enhanced Operations	57 <sup>1</sup>		43		15		52 <sup>1</sup>		32		78 <sup>1</sup>		NA		NA		NA		
11/09/14	254	23		74 <sup>1</sup>		43		17		52 <sup>1</sup>		32		78 <sup>1</sup>		NA		NA		NA		
11/10/14	251	24		54 <sup>1</sup>		37		13		52 <sup>1</sup>		6		69 <sup>1</sup>		NA		NA		NA		
11/11/14	274	20		52 <sup>1</sup>		43		15		52 <sup>1</sup>		26		68 <sup>1</sup>		NA		NA		NA		
11/12/14	301	20		46		45		15		3 <sup>2</sup>		32		62		5		5		5		Future Metric - Enhanced Operations
11/13/14	309	19		47		45		16		0 <sup>2</sup>		31		62		5		5		5		Future Metric - Enhanced Operations
11/14/14	312	19		47		45		16		1 <sup>2</sup>		34		62		5		5		5		Future Metric - Enhanced Operations
11/15/14	310	20		46		45		15		0 <sup>2</sup>		27		62		5		5		5		Future Metric - Enhanced Operations
11/16/14	315	20		47		46		16		0 <sup>2</sup>		32		62		5		5		5		Future Metric - Enhanced Operations
11/17/14	311	20		47		45		16		18		31		63		5		5		5		Future Metric - Enhanced Operations
11/18/14	313	20		47		46		15		52 <sup>2</sup>		31		63		5		5		5		Future Metric - Enhanced Operations
11/19/14	294	20		48		46		16		53		31		64		5		5		5		Future Metric - Enhanced Operations
11/20/14	251	19		47		45		15		58		32		62		5		5		5		Future Metric - Enhanced Operations
11/21/14	250	19		47		46		16		58		31		62		5		5		5		Future Metric - Enhanced Operations
11/22/14	249	20		46		45		16		58		31		62		5		5		5		Future Metric - Enhanced Operations
11/23/14	252	20		47		47		16		59		32		63		5		5		5		Future Metric - Enhanced Operations
11/24/14	249	20		47		46		15		58		31		63		5		5		5		Future Metric - Enhanced Operations
11/25/14	250	19		46		46		16		58		31		63		5		5		5		Future Metric - Enhanced Operations
11/26/14	249	20		47		45		15		58		30		62		5		5		5		Future Metric - Enhanced Operations
11/27/14	250	20		47		46		16		58		31		63		5		5		5		Future Metric - Enhanced Operations
11/28/14	251	19		47		46		15		59		32		62		5		5		5		Future Metric - Enhanced Operations
11/29/14	250	19		47		46		16		58		31		63		5		5		5		Future Metric - Enhanced Operations
11/30/14	250	20		47		45		15		59		31		63		5		5		5		Future Metric - Enhanced Operations
Monthly Average	280	21			50		45		16		54		30		63		5		5		5	
Analytical <sup>4</sup>		Conc (mg/L)		Date	Conc (mg/L)	Date	Conc (mg/L)	Date	Conc (mg/L)	Date	ART-6 (mg/L)	ART-9 (mg/L)	Date	Conc (mg/L)	Date	Conc (mg/L)	Date	Conc (mg/L)	Date	Conc (mg/L)	Date	
Perchlorate		11		11/3/2014	45	11/3/2014	220	11/3/2014	280	11/3/2014	36	200	11/3/2014	120	11/3/2014	150	11/3/2014	NA	11/3/2014	NA	11/3/2014	
Hexavalent Chromium		Future Metric - Enhanced Operations																				
Total Chromium <sup>5</sup>		0.0027		11/3/2014	0.027	11/3/2014	0.39	11/3/2014	0.6	11/3/2014	0.21	1.1	11/3/2014	0.65	11/3/2014	0.16	11/3/2014	NA	11/3/2014	NA	11/3/2014	

Notes:

- Flow reported as gpm is a daily average calculated from the totalizer reading
- 1: ART-9 developed leak in PVC weld holding flow meter into piping. Glue was used to reinforce the weld and well was turned off to allow glue to cure. Art-2 and Art-8 flows were adjusted to accommodate shut down. ART-9 back on line 11/11/2014.
- 2: Totalizer flow for ART-9 dropped ~20 gpm when the well went on line from repair. There was no drop in the level of the wet well at LS3 nor was there a drop in the flow to LS2. The flow remained at ~52 gpm but flow meter was recalibrated on 11/19/2014.
- 3: PC-150 began pumping on 11/11/2014; NA = Not applicable
- 4: Analytical results are reported from TestAmerica
- 5: Quarterly results, most recent sampling concentrations listed (Samples will be transitioned to monthly reporting in the future)

Table 3 - Interceptor Well Field (IWF) Operational Metrics

Nevada Environmental Response Trust   Groundwater Extraction and Treatment System   Enhanced Operational Metrics																				
Date	I-AR		I-AA		I-AB		I-AC		I-AD		I-B		I-C		I-D		I-E		I-F	
	Flow (gpm)	Level (ft)	Flow (gpm)	Level (ft)	Flow (gpm)	Level (ft)	Flow (gpm)	Level (ft)	Flow (gpm)	Level (ft)	Flow (gpm)	Level (ft)	Flow (gpm)	Level (ft)	Flow (gpm)	Level (ft)	Flow (gpm)	Level (ft)	Flow (gpm)	Level (ft)
11/01/14	0.77		1.44		0.00		0.00		0.00		1.23		5.94		1.94		1.34		4.26	
11/02/14	0.76		1.34		0.00		0.00		0.00		1.07		5.49		1.79		1.24		3.86	
11/03/14	0.75		1.36		0.00		0.00		0.00		1.11		5.61		1.83		1.27		3.97	
11/04/14	0.77		1.35		0.00		0.00		0.00		1.10		5.60		1.83		1.24		3.93	
11/05/14	0.77		1.36		0.00		0.00		0.00		1.12		5.58		1.83		1.24		3.98	
11/06/14	0.77		1.36		0.00		0.00		0.00		1.17		5.50		1.83		1.24		3.93	
11/07/14	0.78		1.35		0.00		0.00		0.00		1.08		5.53		1.83		1.23		4.02	
11/08/14	0.76		1.33		0.00		0.00		0.00		1.11		5.43		1.82		1.21		3.98	
11/09/14	0.79		1.37		0.00		0.00		0.00		1.14		5.52		1.86		1.25		4.08	
11/10/14	0.78		1.35		0.00		0.00		0.00		1.18		5.42		1.84		1.22		4.10	
11/11/14	0.78		1.34		0.00		0.00		0.00		1.12		5.41		1.83		1.23		4.06	
11/12/14	0.80		1.36		0.00		0.00		0.00		1.13		5.28		1.84		1.24		4.09	
11/13/14	0.79		1.34		0.00		0.00		0.00		1.10		5.29		1.84		1.24		4.19	
11/14/14	0.81		1.36		0.00		0.00		0.00		1.08		5.30		1.84		1.25		4.16	
11/15/14	0.80		1.35		0.00		0.00		0.00		1.15		5.30		1.84		1.23		4.17	
11/16/14	0.79		1.35		0.00		0.00		0.00		1.08		5.31		1.83		1.23		4.14	
11/17/14	0.80		1.36		0.00		0.00		0.00		1.10		5.41		1.84		1.22		4.13	
11/18/14	0.79		1.33		0.00		0.00		0.00		0.99		5.40		1.82		1.22		4.24	
11/19/14	0.80		1.35		0.00		0.00		0.00		1.04		5.42		1.84		1.23		4.22	
11/20/14	0.81		1.34		0.00		0.00		0.00		1.05		5.41		1.84		1.23		4.27	
11/21/14	0.80		1.35		0.00		0.00		0.00		1.07		5.46		1.83		1.22		4.23	
11/22/14	0.79		1.33		0.00		0.00		0.00		0.99		5.44		1.84		1.23		4.26	
11/23/14	0.80		1.33		0.00		0.00		0.00		1.08		5.44		1.84		1.23		4.24	
11/24/14	0.80		1.33		0.00		0.00		0.00		1.00		5.48		1.84		1.24		4.28	
11/25/14	0.78		1.34		0.00		0.00		0.00		1.05		5.51		1.83		1.26		4.25	
11/26/14	0.79		1.36		0.00		0.00		0.00		1.05		5.59		1.85		1.27		4.38	
11/27/14	0.78		1.32		0.00		0.00		0.00		1.10		5.49		1.81		1.24		4.26	
11/28/14	0.78		1.34		0.00		0.00		0.00		1.06		5.54		1.83		1.25		4.25	
11/29/14	0.79		1.32		0.00		0.00		0.00		1.03		5.52		1.82		1.26		4.29	
11/30/14	0.75		1.35		1.17		0.00		1.85		1.08		5.62		1.84		1.27		4.38	
Monthly Average	0.78		1.35		0.04		0.00		0.06		1.09		5.47		1.84		1.24		4.15	
Analytical <sup>1</sup>	Conc (mg/L)	Date	Conc (mg/L)	Date	Conc (mg/L)	Date	Conc (mg/L)	Date	Conc (mg/L)	Date	Conc (mg/L)	Date	Conc (mg/L)	Date	Conc (mg/L)	Date	Conc (mg/L)	Date	Conc (mg/L)	Date
Perchlorate <sup>4</sup>	2300	8/11/2014	120	8/11/2014	NA <sup>2</sup>	NA <sup>2</sup>	NA <sup>2</sup>	NA <sup>2</sup>	140	8/14/2014	920	8/11/2014	900	8/11/2014	970	8/11/2014	830	8/11/2014	1300	8/11/2014
Hexavalent Chromium	Future Metric - Enhanced Operations																			
Total Chromium <sup>4</sup>	0.47	8/11/2014	0.77	8/11/2014	NA <sup>3</sup>	NA <sup>3</sup>	NA <sup>3</sup>	NA <sup>3</sup>	1.4	8/14/2014	0.16	8/11/2014	2.7	8/11/2014	6.9	8/11/2014	7.9	8/11/2014	16	8/11/2014

Notes:  
 Flow reported as gpm is a daily average calculated from the totalizer reading  
 1: Analytical results are reported from TestAmerica  
 2: NA = Not Available. No data recorded on chain of custody log  
 3: NA = Not available. No data reported from Test America  
 4: Quarterly results, most recent sampling concentrations listed (Samples will be transitioned to monthly reporting in the future)

Table 3 - Interceptor Well Field (IWF) Operational Metrics

Nevada Environmental Response Trust   Groundwater Extraction and Treatment System   Enhanced Operational Metrics																				
Date	I-G		I-H		I-I		I-J		I-K		I-L		I-M		I-N		I-O		I-P	
	Flow (gpm)	Level (ft)	Flow (gpm)	Level (ft)	Flow (gpm)	Level (ft)	Flow (gpm)	Level (ft)	Flow (gpm)	Level (ft)	Flow (gpm)	Level (ft)	Flow (gpm)	Level (ft)	Flow (gpm)	Level (ft)	Flow (gpm)	Level (ft)	Flow (gpm)	Level (ft)
11/01/14	0.15		1.55		4.77		2.67		5.34		2.42		2.64		3.13		2.98		3.47	
11/02/14	0.14		1.40		4.84		2.72		5.39		2.26		2.44		2.87		2.68		4.46	
11/03/14	0.15		1.43		4.68		2.62		5.24		2.30		2.50		2.92		2.77		3.81	
11/04/14	0.15		1.44		4.70		2.65		5.28		2.31		2.51		2.93		2.77		3.79	
11/05/14	0.17		1.43		4.66		2.63		5.27		2.32		2.51		2.92		2.77		3.79	
11/06/14	0.17		1.43		4.66		2.64		5.28		2.34		2.51		2.94		2.77		3.81	
11/07/14	0.16		1.44		4.67		2.65		5.31		2.35		2.45		2.79		2.77		3.84	
11/08/14	0.16		1.44		4.64		2.64		5.24		2.32		2.42		2.55		2.74		3.85	
11/09/14	0.16		1.47		4.63		2.52		5.23		2.39		2.49		2.58		2.73		3.92	
11/10/14	0.17		1.47		4.71		2.63		5.30		2.36		2.44		2.54		2.76		3.93	
11/11/14	0.16		1.47		4.78		2.65		5.34		2.35		2.42		2.55		2.76		3.94	
11/12/14	0.16		1.45		4.74		2.64		5.28		2.38		2.41		2.53		2.72		3.88	
11/13/14	0.16		1.48		4.71		2.62		5.21		2.39		2.43		2.54		1.75		4.01	
11/14/14	0.14		1.51		4.73		2.64		5.23		2.41		2.44		2.52		0 <sup>5</sup>		4.38	
11/15/14	0.16		1.56		4.74		2.63		5.23		2.38		2.43		2.52		0 <sup>5</sup>		4.62	
11/16/14	0.14		1.57		4.59		2.55		5.04		2.39		2.43		2.51		0 <sup>5</sup>		4.64	
11/17/14	0.15		1.55		4.66		2.57		5.13		2.41		2.41		2.47		0 <sup>5</sup>		4.48	
11/18/14	0.16		1.52		4.75		2.65		5.27		2.39		2.41		2.37		3.34 <sup>6</sup>		4.15	
11/19/14	0.15		1.48		4.70		2.61		5.24		2.42		2.42		2.35		3.22		4.02	
11/20/14	0.15		1.49		4.80		2.68		5.35		2.42		2.44		2.31		3.18		3.98	
11/21/14	0.15		1.47		4.70		2.61		5.22		2.45		2.45		2.29		3.13		3.90	
11/22/14	0.16		1.48		4.69		2.61		5.21		2.44		2.45		2.30		3.16		3.92	
11/23/14	0.15		1.45		4.74		2.63		5.25		2.44		2.43		2.27		3.05		3.80	
11/24/14	0.15		1.46		4.73		2.64		5.23		2.44		2.45		2.26		3.06		3.78	
11/25/14	0.16		1.46		4.70		2.61		5.21		2.44		2.45		2.24		3.06		3.77	
11/26/14	0.16		1.47		4.64		2.58		5.15		2.49		2.46		2.25		3.08		3.80	
11/27/14	0.15		1.45		4.85		2.69		5.39		2.46		2.42		2.21		3.05		3.76	
11/28/14	0.16		1.46		4.76		2.65		5.31		2.50		2.43		2.23		3.10		3.83	
11/29/14	0.15		1.48		4.71		2.63		5.20		2.45		2.44		2.19		3.13		3.83	
11/30/14	0.14		1.47		4.69		2.63		5.20		2.48		2.46		2.18		3.10		3.83	
Monthly Average	0.15		1.47		4.71		2.63		5.25		2.40		2.45		2.51		2.89		3.97	
Analytical <sup>1</sup>	Conc (mg/L)	Date	Conc (mg/L)	Date	Conc (mg/L)	Date	Conc (mg/L)	Date	Conc (mg/L)	Date	Conc (mg/L)	Date	Conc (mg/L)	Date	Conc (mg/L)	Date	Conc (mg/L)	Date	Conc (mg/L)	Date
Perchlorate <sup>4</sup>	1700	8/11/2014	2200	8/11/2014	680	8/14/2014	260	8/14/2014	220	8/14/2014	990	8/11/2014	1100	8/11/2014	1200	8/11/2014	1200	8/11/2014	1400	8/11/2014
Hexavalent Chromium	Future Metric - Enhanced Operations																			
Total Chromium <sup>4</sup>	22	8/11/2014	20	8/11/2014	13	8/14/2014	4.4	8/14/2014	2.2	8/14/2014	0.94	8/11/2014	7.6	8/11/2014	8.9	8/11/2014	13	8/11/2014	17	8/11/2014

Notes:  
 Flow reported as gpm is a daily average calculated from the totalizer reading  
 1: Analytical results are reported from TestAmerica  
 4: Quarterly results, most recent sampling concentrations listed (Samples will be transitioned to monthly reporting in the future)  
 5: Nick found on I-O well wiring. New flow meter installed on I-O on 11/17/2014  
 6: Flow adjusted for installation of new flow meter at 11:33AM on 11/17/2014.

Table 3 - Interceptor Well Field (IWF) Operational Metrics

Nevada Environmental Response Trust I Groundwater Extraction and Treatment System I Enhanced Operational Metrics																				
Date	I-Q		I-R		I-S		I-T		I-U		I-V		I-W		I-X		I-Y		I-Z	
	Flow (gpm)	Level (ft)	Flow (gpm)	Level (ft)	Flow (gpm)	Level (ft)	Flow (gpm)	Level (ft)	Flow (gpm)	Level (ft)	Flow (gpm)	Level (ft)	Flow (gpm)	Level (ft)	Flow (gpm)	Level (ft)	Flow (gpm)	Level (ft)	Flow (gpm)	Level (ft)
11/01/14	0.50		2.79		5.45		0.58		0.95		5.77		1.39		3.29		1.47		2.79	
11/02/14	0.45		2.59		5.05		0.41		0.86		5.83		1.27		3.00		1.44		2.83	
11/03/14	0.47		2.56		5.07		0.49		0.88		5.64		1.32		3.08		1.45		2.74	
11/04/14	0.46		2.60		5.06		0.48		0.89		5.67		1.32		3.06		1.46		2.75	
11/05/14	0.46		2.58		5.08		0.49		0.89		5.65		1.32		3.07		1.47		2.75	
11/06/14	0.47		2.57		5.10		0.48		0.89		5.61		1.17		3.08		1.46		2.75	
11/07/14	0.46		2.57		5.09		0.45		0.89		5.61		1.12		3.08		1.46		2.76	
11/08/14	0.46		2.50		5.02		0.52		0.89		5.58		1.12		3.09		1.46		2.72	
11/09/14	0.47		2.51		5.15		0.47		0.91		5.54		1.14		3.19		1.52		2.70	
11/10/14	0.47		2.48		5.06		0.49		0.90		5.64		1.13		3.14		1.46		2.75	
11/11/14	0.47		2.45		5.04		0.49		0.90		5.69		1.15		3.14		1.47		2.78	
11/12/14	0.46		2.51		5.11		0.49		0.90		5.66		1.12		3.15		1.46		2.76	
11/13/14	0.47		2.52		5.11		0.48		0.92		5.62		1.15		3.18		1.46		2.75	
11/14/14	0.46		2.62		5.11		0.48		0.90		5.64		1.14		3.16		1.49		2.77	
11/15/14	0.47		2.57		5.10		0.51		0.92		5.65		1.15		3.18		1.50		2.77	
11/16/14	0.46		2.52		5.04		0.45		0.92		5.45		1.14		3.14		1.68		2.68	
11/17/14	0.47		2.58		5.12		0.48		0.91		5.55		1.12		3.18		1.39		2.70	
11/18/14	0.47		2.55		5.13		0.49		0.91		5.68		0.85		3.19		1.50		2.77	
11/19/14	0.46		2.58		5.15		0.48		0.91		5.62		0.78		3.19		1.49		2.74	
11/20/14	0.47		2.58		5.14		0.49		0.91		5.72		0.78		3.20		1.46		2.79	
11/21/14	0.46		2.58		5.19		0.48		0.91		5.60		0.77		3.21		1.47		2.73	
11/22/14	0.47		2.56		5.18		0.50		0.91		5.59		0.79		3.22		1.46		2.72	
11/23/14	0.46		2.57		5.20		0.46		0.89		5.65		0.78		3.19		1.46		2.75	
11/24/14	0.46		2.58		5.18		0.50		0.91		5.62		0.78		3.22		1.44		2.75	
11/25/14	0.47		2.58		5.19		0.49		0.91		5.55		0.79		3.23		1.44		2.72	
11/26/14	0.47		1.98		5.23		0.49		0.92		5.46		0.79		3.25		1.42		2.69	
11/27/14	0.46		3.15		5.14		0.52		0.90		5.68		0.78		3.19		1.39		2.81	
11/28/14	0.47		2.56		5.20		0.47		0.92		5.57		0.79		3.23		1.39		2.76	
11/29/14	0.47		2.52		5.18		0.48		0.91		5.48		0.79		3.19		1.38		2.72	
11/30/14	0.47		2.55		5.27		0.47		0.92		5.48		0.79		3.27		1.39		2.73	
Monthly Average	0.47		2.56		5.14		0.49		0.91		5.62		1.02		3.17		1.46		2.75	
Analytical <sup>1</sup>	Conc (mg/L)	Date	Conc (mg/L)	Date	Conc (mg/L)	Date	Conc (mg/L)	Date	Conc (mg/L)	Date	Conc (mg/L)	Date	Conc (mg/L)	Date	Conc (mg/L)	Date	Conc (mg/L)	Date	Conc (mg/L)	Date
Perchlorate <sup>4</sup>	1700	8/11/2014	1600	8/11/2014	690	8/11/2014	1700	8/11/2014	1700	8/11/2014	1000	8/14/2014	1100	8/11/2014	2000	8/11/2014	1300	8/11/2014	310	8/14/2014
Hexavalent Chromium	Future Metric - Enhanced Operations																			
Total Chromium <sup>4</sup>	21	8/11/2014	0.55	8/11/2014	1.5	8/11/2014	23	8/11/2014	23	8/11/2014	12	8/14/2014	14	8/11/2014	11	8/11/2014	0.83	8/11/2014	8.1	8/14/2014

Notes:

Flow reported as gpm is a daily average calculated from the totalizer reading

1: Analytical results are reported from TestAmerica

4: Quarterly results, most recent sampling concentrations listed (Samples will be transitioned to monthly reporting in the future)

Table 4 - Treatment Plant Operational Metrics

Nevada Environmental Response Trust   Groundwater Extraction and Treatment System   Enhanced Operational Metrics																
Date	LS #2	GWTP Effluent <sup>1</sup>				GW-11 Influent <sup>2</sup>				FBR Plant Influent <sup>3</sup>						
	Flow (gpm)	Flow (gpm)	TA - Cr (TR) (mg/L)	TA - Cr (VI) (mg/L)	TA - ClO <sub>4</sub> (mg/L)	Flow (gpm)	Cr (TR) (mg/L)	Cr (VI) (mg/L)	ClO <sub>4</sub> (mg/L)	Flow <sup>3</sup> (gpm)	TA - ClO <sub>4</sub> (mg/L)	ETI - ClO <sub>4</sub> (mg/L)	TA - ClO <sub>3</sub> (mg/L)	TA - NO <sub>3</sub> - N (mg/L)	TA-Cr (TR) (mg/L)	TA-Cr (VI) (mg/L)
11/01/14	915	61				0				975	100	101				
11/02/14	873	58				0				931		104				
11/03/14	876	58				0				934		102	160	8	0.12	0.06
11/04/14	875	58				0				933		101				
11/05/14	873	58				0				931		102				
11/06/14	877	58	0.18	ND	870	0				935		107				
11/07/14	874	57				0				931		100				
11/08/14	873	58				0				931	110	100				
11/09/14	872	58				0				930		83				
11/10/14	878	58				0				936		83		10	0.07	0.06
11/11/14	874	57				0				932		99				
11/12/14	873	58				0				931		105				
11/13/14	876	57	0.45	ND	930	0				932		105				
11/14/14	874	55				0				930		101				
11/15/14	868	56				0				924	100	98				
11/16/14	882	56				0				937		101				
11/17/14	874	58				0				931		102		10	0.13	0.10
11/18/14	876	59				0				935		106				
11/19/14	874	58				0				932		102				
11/20/14	875	58	0.85	ND	890	0				933		96				
11/21/14	874	58				0				933		105				
11/22/14	871	58				0				929	110	103				
11/23/14	879	57				0				936		102				
11/24/14	874	58				0				931		NA <sup>4</sup>		10	0.08	0.05
11/25/14	875	57				0				932		102				
11/26/14	872	58				0				930		102				
11/27/14	876	57	1	ND	1100	0				933		102				
11/28/14	876	58				0				934		103				
11/29/14	871	58				0				929	120	103				
11/30/14	876	57				0				933		98				
Monthly Average	876	58	0.70	ND	948	0				933	108	101	160	9	0.10	0.07

Notes:  
 Flow reported as gpm is a daily average calculated from the totalizer reading  
 ND = Not detected above laboratory method detection limit (ClO<sub>4</sub> = 0.5 ug/L; ClO<sub>3</sub> = 10 ug/L; NO<sub>3</sub>-N= 0.055 mg/L, CR(VI) = 0.25 ug/L)  
 1: ETI = Envirogen internal process control data, TA = TestAmerica data  
 2: GW-11 currently offline. Combined LS#2 and GWTP flow is currently being sent to FBRs  
 3: FBR Plant Influent Flow calculated as the sum of GWTP Effluent Flow + LS2 Flow  
 4: NA = Not available. ClO<sub>4</sub> data missing due to service repairs conducted on the Low Level IC instrument.

Table 4 - Treatment Plant Operational Metrics

Nevada Environmental Response Trust   Groundwater Extraction and Treatment System   Enhanced Operational Metrics														
Date	1st Stage FBR Influent			2nd Stage FBR Influent			FBR Plant Effluent <sup>1</sup>							
	Flow (gpm)	pH (s.u.)	ORP (mV)	Flow (gpm)	pH (s.u.)	ORP (mV)	Flow (gpm)	TA - ClO <sub>2</sub> (mg/L)	ETI - ClO <sub>2</sub> (mg/L)	TA - ClO <sub>3</sub> (mg/L)	TA - Cr (TR) (mg/L)	TA - Cr (VI) (mg/L)	TA - SO <sub>4</sub> (mg/L)	ETI - Turbidity (NTU)
11/01/14		NA <sup>5</sup>	NA <sup>5</sup>		NA <sup>5</sup>	NA <sup>5</sup>	850	ND	ND					4
11/02/14		NA <sup>5</sup>	NA <sup>5</sup>		NA <sup>5</sup>	NA <sup>5</sup>	781		ND					8
11/03/14		NA <sup>5</sup>	NA <sup>5</sup>		NA <sup>5</sup>	NA <sup>5</sup>	840		ND	ND			1200	42
11/04/14		NA <sup>5</sup>	NA <sup>5</sup>		NA <sup>5</sup>	NA <sup>5</sup>	831		ND					26
11/05/14		NA <sup>5</sup>	NA <sup>5</sup>		NA <sup>5</sup>	NA <sup>5</sup>	846		ND					22
11/06/14		NA <sup>5</sup>	NA <sup>5</sup>		NA <sup>5</sup>	NA <sup>5</sup>	850		ND					15
11/07/14		NA <sup>5</sup>	NA <sup>5</sup>		NA <sup>5</sup>	NA <sup>5</sup>	837		ND					5
11/08/14		NA <sup>5</sup>	NA <sup>5</sup>		NA <sup>5</sup>	NA <sup>5</sup>	842	ND	ND					6
11/09/14		NA <sup>5</sup>	NA <sup>5</sup>		NA <sup>5</sup>	NA <sup>5</sup>	736		ND					19
11/10/14		NA <sup>5</sup>	NA <sup>5</sup>		NA <sup>5</sup>	NA <sup>5</sup>	836		ND		0.01	ND		9
11/11/14		NA <sup>5</sup>	NA <sup>5</sup>		NA <sup>5</sup>	NA <sup>5</sup>	851		ND					11
11/12/14		NA <sup>5</sup>	NA <sup>5</sup>		NA <sup>5</sup>	NA <sup>5</sup>	842		ND					11
11/13/14		NA <sup>5</sup>	NA <sup>5</sup>		NA <sup>5</sup>	NA <sup>5</sup>	821		ND					7
11/14/14		NA <sup>5</sup>	NA <sup>5</sup>		NA <sup>5</sup>	NA <sup>5</sup>	845		ND					6
11/15/14		NA <sup>5</sup>	NA <sup>5</sup>		NA <sup>5</sup>	NA <sup>5</sup>	836	ND	ND					12
11/16/14		NA <sup>5</sup>	NA <sup>5</sup>		NA <sup>5</sup>	NA <sup>5</sup>	814		ND					19
11/17/14		NA <sup>5</sup>	NA <sup>5</sup>		NA <sup>5</sup>	NA <sup>5</sup>	853		ND		0.01	ND		19
11/18/14		NA <sup>5</sup>	NA <sup>5</sup>		NA <sup>5</sup>	NA <sup>5</sup>	824		ND					10
11/19/14		NA <sup>5</sup>	NA <sup>5</sup>		NA <sup>5</sup>	NA <sup>5</sup>	836		ND					13
11/20/14		NA <sup>5</sup>	NA <sup>5</sup>		NA <sup>5</sup>	NA <sup>5</sup>	841		ND					17
11/21/14		NA <sup>5</sup>	NA <sup>5</sup>		NA <sup>5</sup>	NA <sup>5</sup>	819		ND					14
11/22/14		NA <sup>5</sup>	NA <sup>5</sup>		NA <sup>5</sup>	NA <sup>5</sup>	769	ND	ND					13
11/23/14		NA <sup>5</sup>	NA <sup>5</sup>		NA <sup>5</sup>	NA <sup>5</sup>	833		ND					11
11/24/14		NA <sup>5</sup>	NA <sup>5</sup>		NA <sup>5</sup>	NA <sup>5</sup>	836		ND		0.01	ND		11
11/25/14		NA <sup>5</sup>	NA <sup>5</sup>		NA <sup>5</sup>	NA <sup>5</sup>	832		ND					12
11/26/14		NA <sup>5</sup>	NA <sup>5</sup>		NA <sup>5</sup>	NA <sup>5</sup>	823		ND					10
11/27/14		NA <sup>5</sup>	NA <sup>5</sup>		NA <sup>5</sup>	NA <sup>5</sup>	826		ND					9
11/28/14		NA <sup>5</sup>	NA <sup>5</sup>		NA <sup>5</sup>	NA <sup>5</sup>	831		ND					7
11/29/14		NA <sup>5</sup>	NA <sup>5</sup>		NA <sup>5</sup>	NA <sup>5</sup>	831	ND	ND					7
11/30/14		NA <sup>5</sup>	NA <sup>5</sup>		NA <sup>5</sup>	NA <sup>5</sup>	825		ND					9
Monthly Average		NA	NA		NA	NA	828	ND	ND	ND	0.01	ND	1200	13

Notes:

Flow reported as gpm is a daily average calculated from the totalizer reading

ND = Not detected above laboratory method detection limit (ClO<sub>2</sub> = 0.5 ug/L; ClO<sub>3</sub> = 10 ug/L; NO<sub>3</sub>-N = 0.055 mg/L, CR(VI) = 0.25 ug/L)

1: ETI = Envirogen internal process control data, TA = TestAmerica data

5: NA = Not available. No data reported due to computer outages

GW-11 Level Monitoring		
Date	Field Measurement (ft)	Volume (MG)
11/6/2014	25.5	42.5
11/13/2014	25.1	43.1
11/20/2014	25.1	43.1
11/27/2014	25.1	43.1

GW-11 Leak Detection Monitoring				
Date	Amount Pumped (gallons)			
	NE Corner	NW Corner	SE Corner	SW Corner
11/6/2014	0	640	0	0
11/20/2014	0	0	0	0

GW-11 Composite Sample <sup>1</sup>		
Analytes	Concentration	Units
Perchlorate	NA <sup>2</sup>	mg/L
Chlorate	NA <sup>2</sup>	mg/L
Ammonia as N	NA <sup>2</sup>	mg/L
Total Phosphorus	NA <sup>2</sup>	mg/L
Total Dissolved Solids (TDS)	NA <sup>2</sup>	mg/L
Total Suspended Solids (TSS)	NA <sup>2</sup>	mg/L
pH	NA <sup>2</sup>	s.u.
Calcium	NA <sup>2</sup>	mg/L
Iron	NA <sup>2</sup>	mg/L
Chromium (total)	NA <sup>2</sup>	mg/L
Chromium VI	NA <sup>2</sup>	mg/L
Chloride	NA <sup>2</sup>	mg/L
Nitrate as N	NA <sup>2</sup>	mg/L
Sulfate	NA <sup>2</sup>	mg/L

Notes:

1: Corner Composite Sample collected on: NA = Not Available.

2: Corner composite sample data not collected because GW-11 is currently offline. Sampling will resume when GW-11 comes online.



Nevada Environmental Response Trust   Groundwater Extraction and Treatment System   Enhanced Operational Metrics						
Date	Flow <sup>1</sup> (gpm)	FBR Influent Concentration			Influent Function Load <sup>2</sup> (lbs/day)	6 Month Rolling Average (lbs/day)
		ClO <sub>4</sub> (mg/L)	NO <sub>3</sub> as N (mg/L)	ClO <sub>3</sub> (mg/L)		
Dec 2013	905	101	12.2	230	741	759
Jan 2014	932	120	11.7	210	759	776
Feb 2014	950	113	12.0	210	762	778
Mar 2014	958	106	9.8	210	732	768
Apr 2014	966	56	4.0	110	376	674
May 2014	951	84	8.9	170	594	660
June 2014	906	123	9.0	220	735	660
July 2014	786	123	8.8	220	636	639
Aug 2014	880	116	10.6	190	663	623
Sept 2014	828	120	10.8	200	649	609
Oct 2014	825	113	12.0	200	645	654
Nov 2014	828	108	9.4	160	548	646

Notes:

Concentrations and flow are presented as monthly average

1: Flow used in loading calculation is average monthly FBR effluent flow to be consistent with historical loading calculations

2: FBR loading calculated as  $[0.9 \cdot \text{NO}_3 \text{ as N} + 0.17 \cdot \text{ClO}_3 + 0.18 \cdot \text{ClO}_4 \cdot \text{Flow} \cdot 1440 / 1000000 \cdot 8.34]$

Figure 1 - GW-11 Pond Volume and Perchlorate Concentration

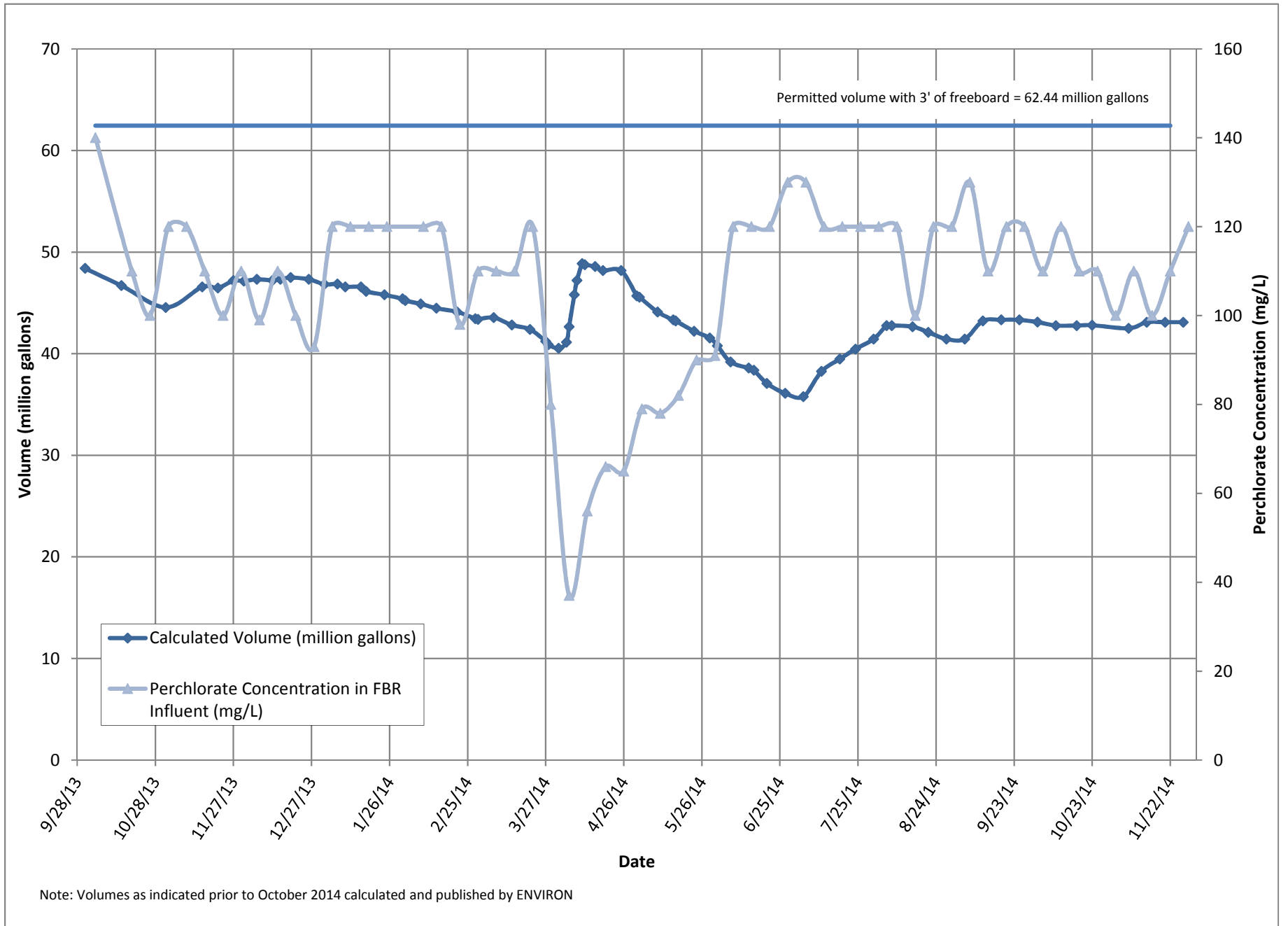


Figure 2 - FBR Equivalent Loading Calculation

