

Path: H:\Perfomance\NERT\GWT\21-32100H05 - Mass Calculations\Python\GIS Maps\12R1_Contour_cr_2006.mxd



2200 Powell St., Suite 700, Emeryville, CA 94608

Contour Interpolation of Groundwater Chromium (2006)
Nevada Environmental Response Trust Site, Henderson, Nevada

Drafter: EA

Date: 8/29/2013

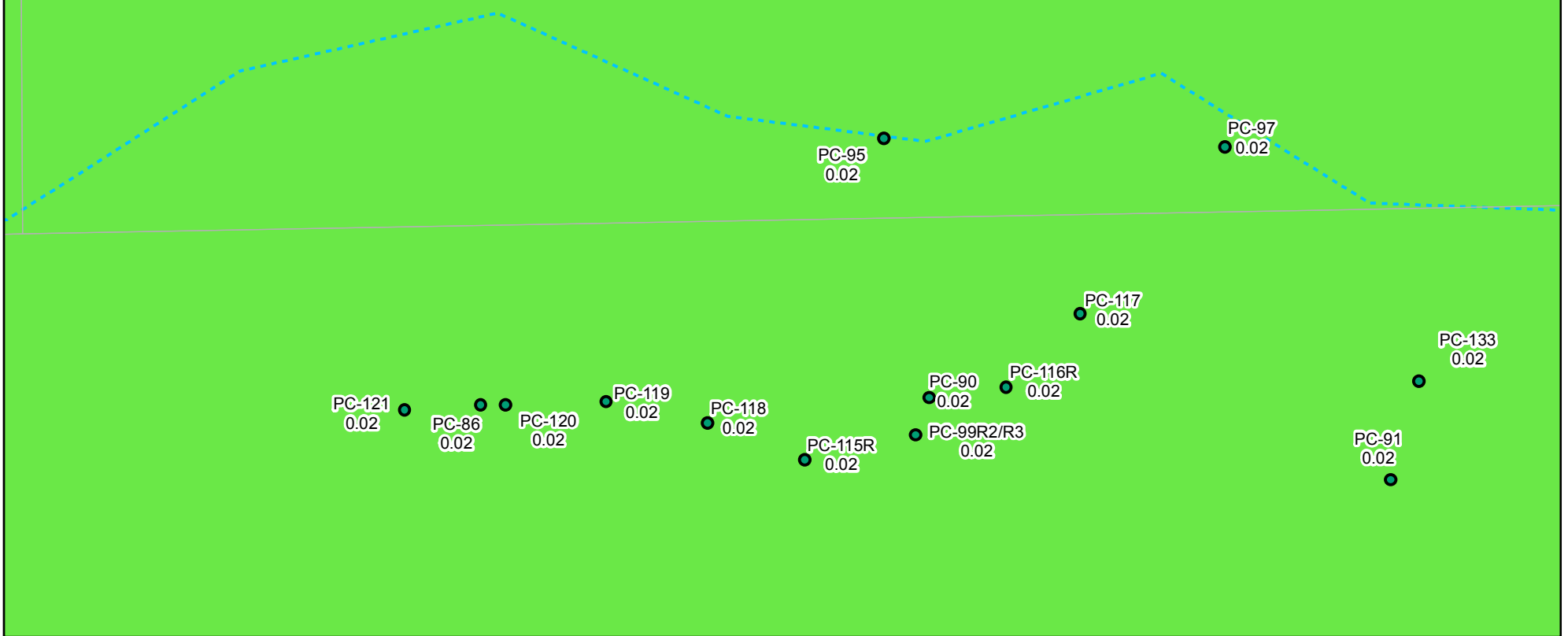
Contract Number: 21-32100H05

Approved by:

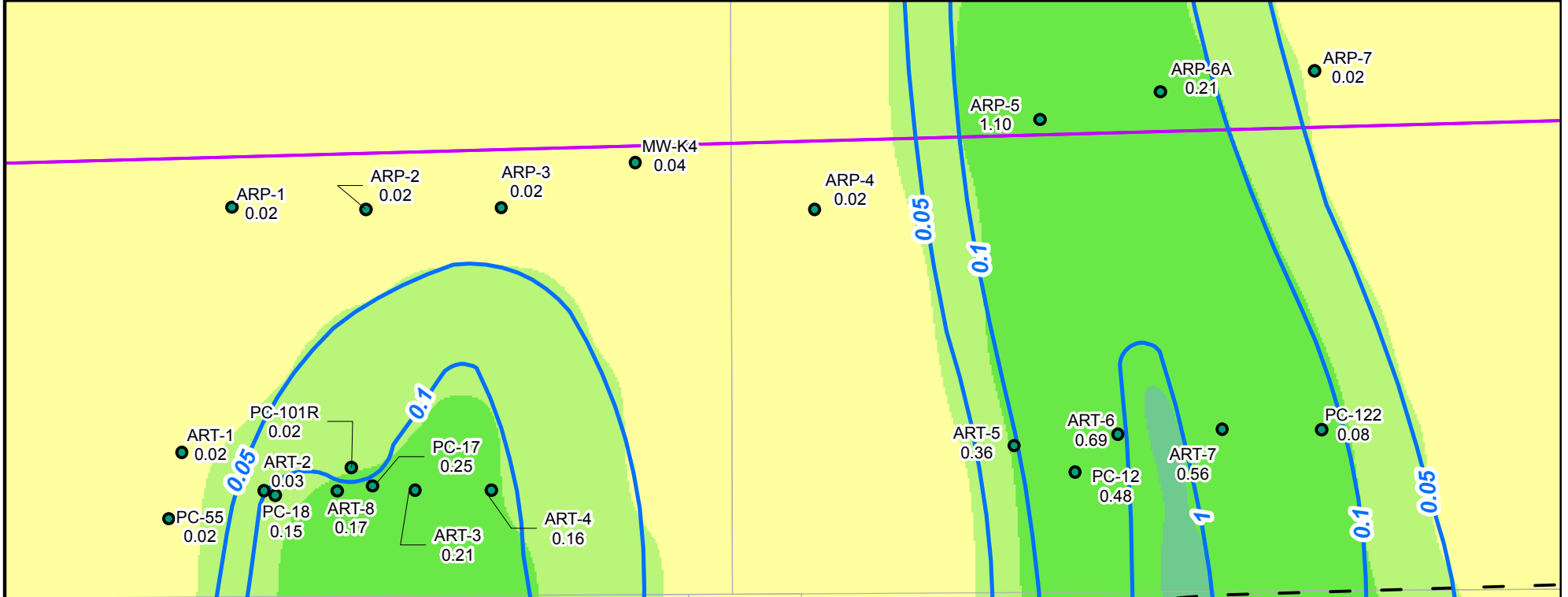
Revised:

Figure
3-1a

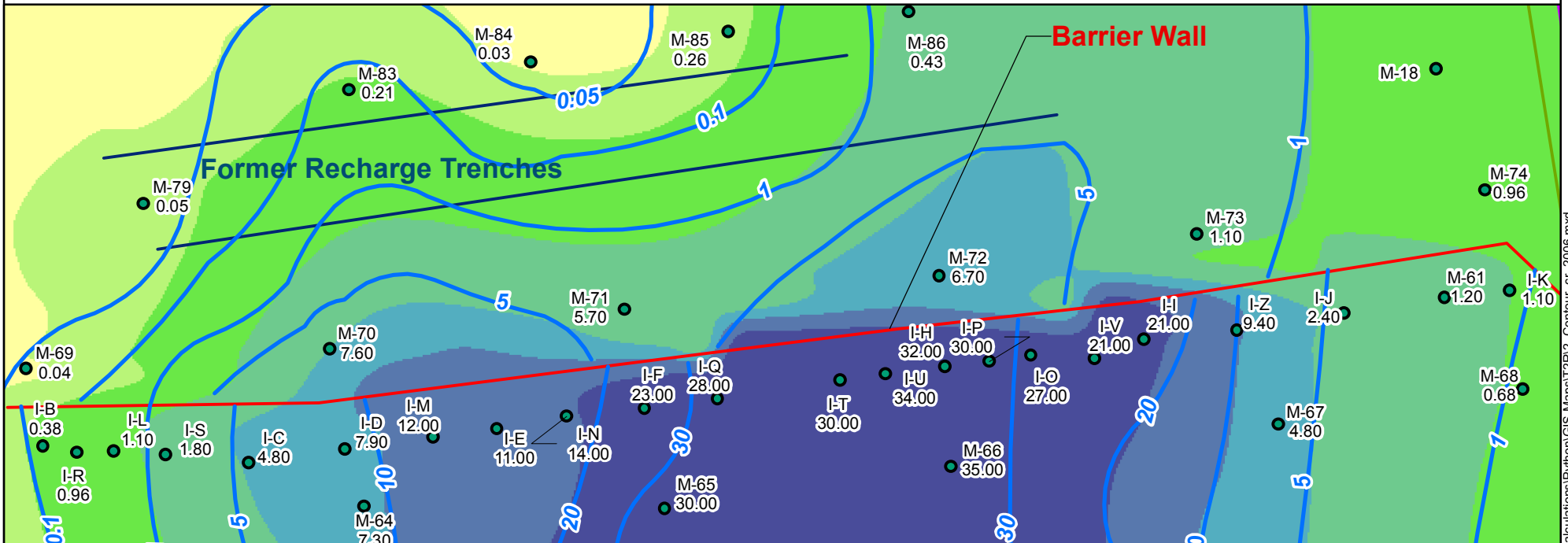
Inset C



Inset B



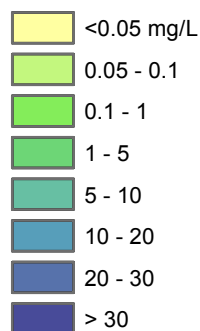
Inset A



LEGEND

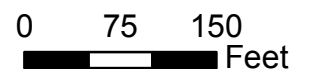
- Shallow Water Bearing Zone Well (used in Contouring)
- 1- Total Chromium Iso-concentration Line (mg/L)
(Dashed where approximate)
- 1700 Total Chromium Concentration (mg/L)
- ▭ Plume Mass Estimation Boundary

Chromium Interpolated Concentrations for 2006 (Contour)



1 : 1,800

1 inch = 150 ft



Grid: State Plane, Nevada East, NAD83, Feet



2200 Powell St., Suite 700, Emeryville, CA 94608

Contour Interpolation of Groundwater Chromium (2006)
Nevada Environmental Response Trust Site, Henderson, Nevada

Drafter: EA

Date: 8/29/2013

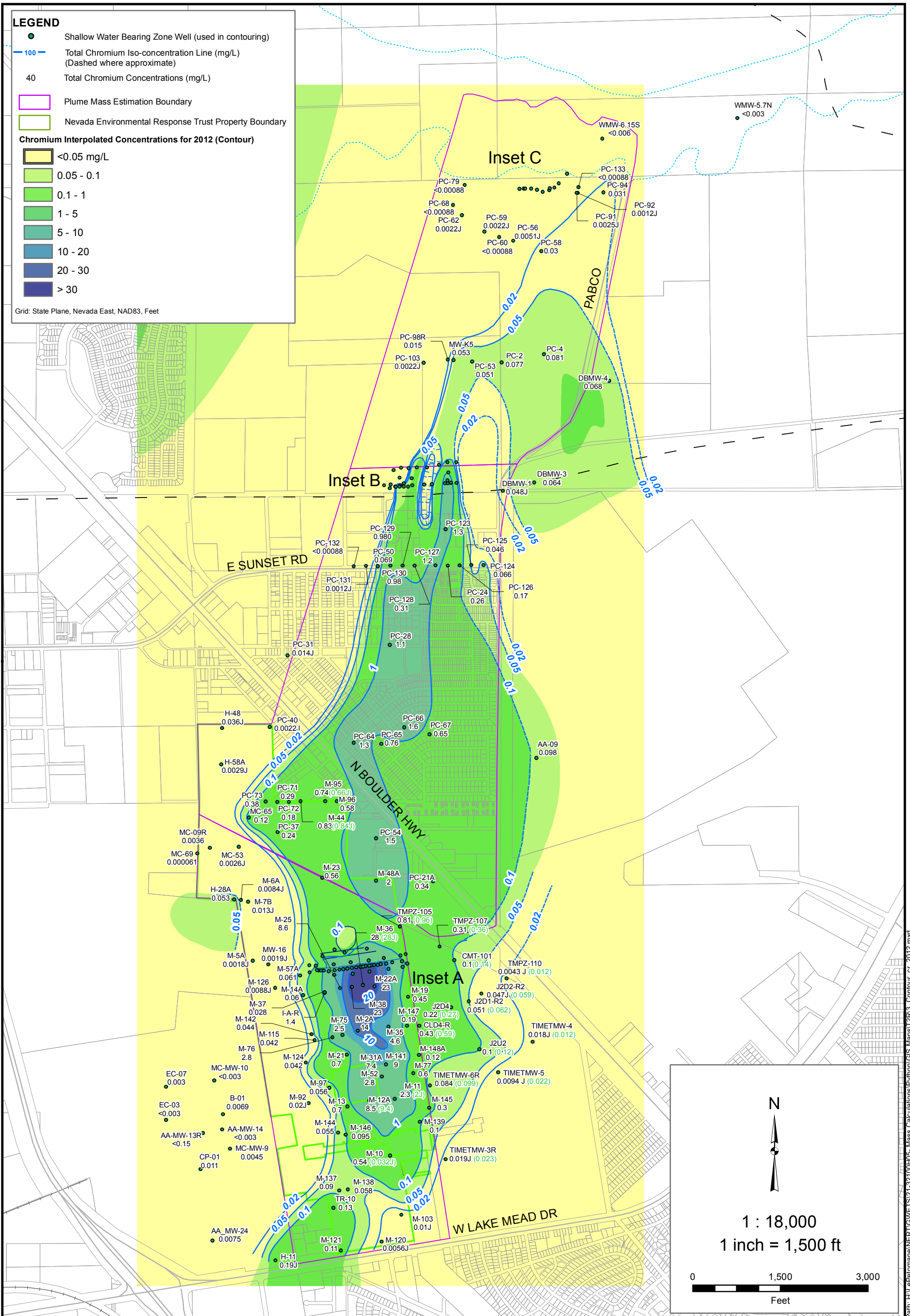
Contract Number: 21-32100H05

Approved by:

Revised:

Figure
3-1b

Path: H:\LePetomane\NERT\GWE\TS21-32100H05 - Mass Calculations\Python\GIS Maps\12R2 - Contour_cr_2006.mxd



Path: H:\Perfomance\NERT\GIS\21-32100H05-Mass Calculations\Python\GIS Maps\12R3_Contour_cr_2012.mxd



2200 Powell St., Suite 700, Emeryville, CA 94608

Contour Interpolation of Groundwater Chromium (2012)
Nevada Environmental Response Trust Site, Henderson, Nevada

Drafter: EA

Date: 8/29/2013

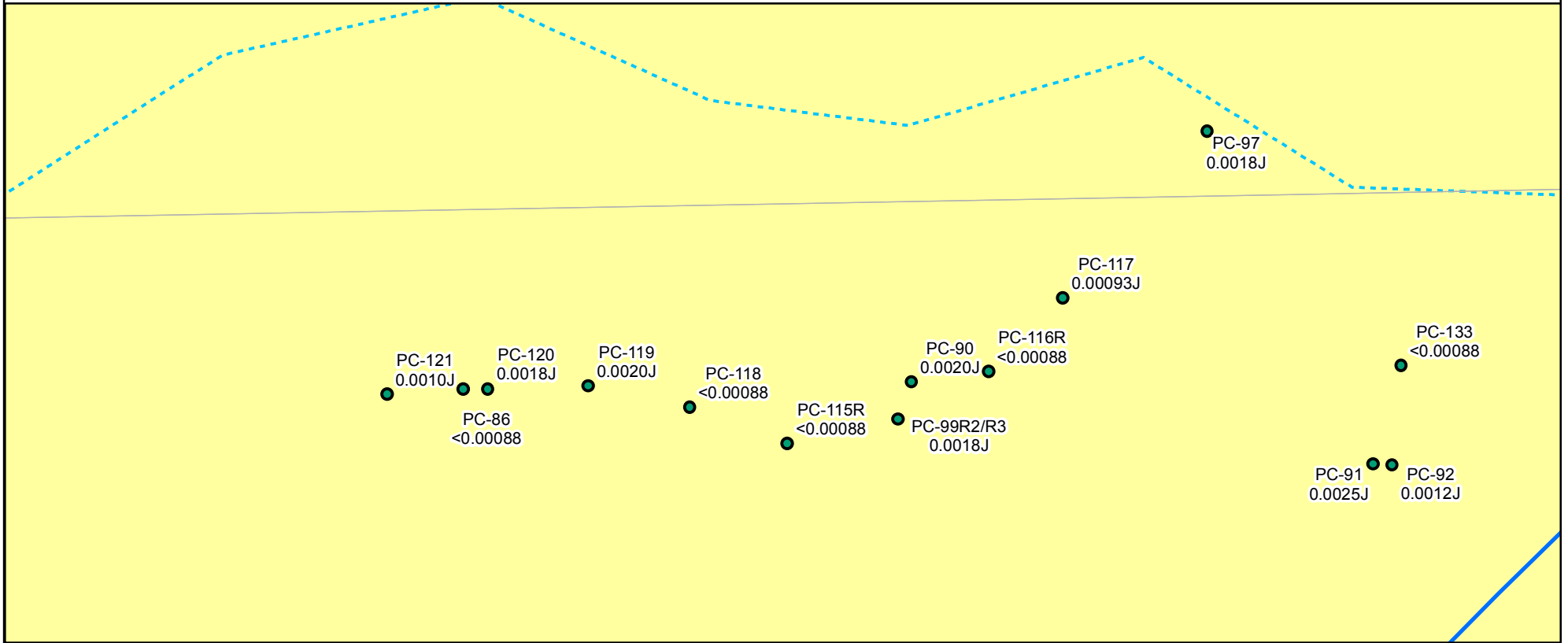
Contract Number: 21-32100H05

Approved by:

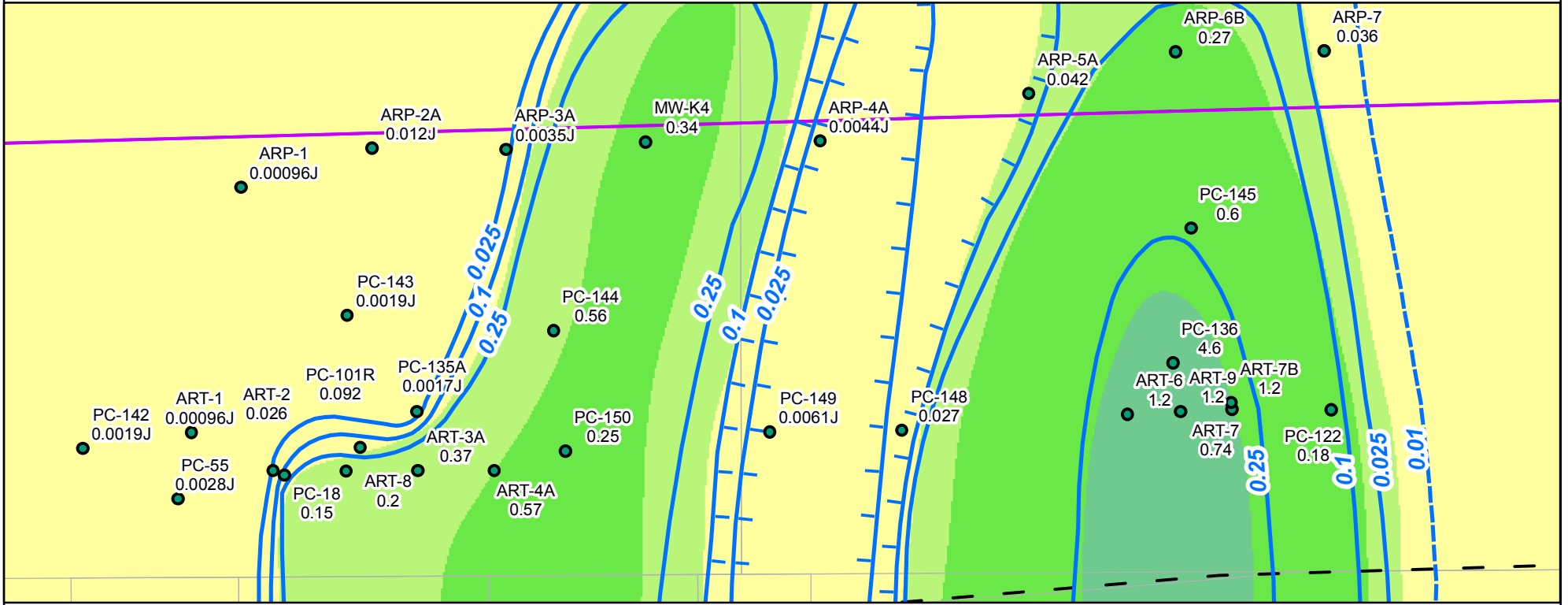
Revised:

Figure
3-2a

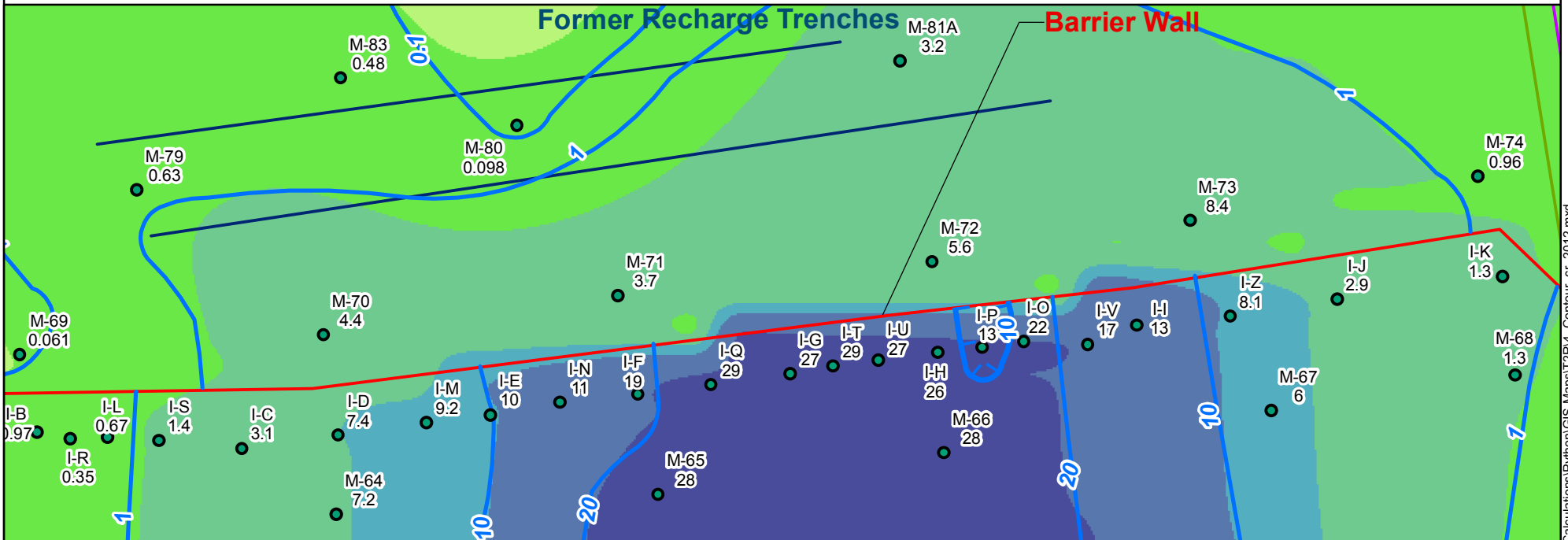
Inset C



Inset B



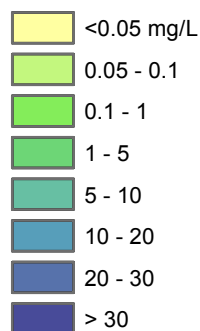
Inset A



LEGEND

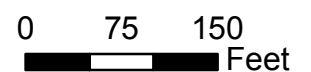
- Shallow Water Bearing Zone Well (used in Contouring)
- 1- Perchlorate Iso-concentration Line (mg/L) (Dashed where approximate)
- 1700 Total Chromium Concentration (mg/L)
- ▭ Plume Mass Estimation Boundary

Chromium Interpolated Concentrations for 2012 (Contour)



1:1,800

1 inch = 150 ft



Grid: State Plane, Nevada East, NAD83, Feet



2200 Powell St., Suite 700, Emeryville, CA 94608

Contour Interpolation of Groundwater Chromium (2012) Nevada Environmental Response Trust Site, Henderson, Nevada

Drafter: EA

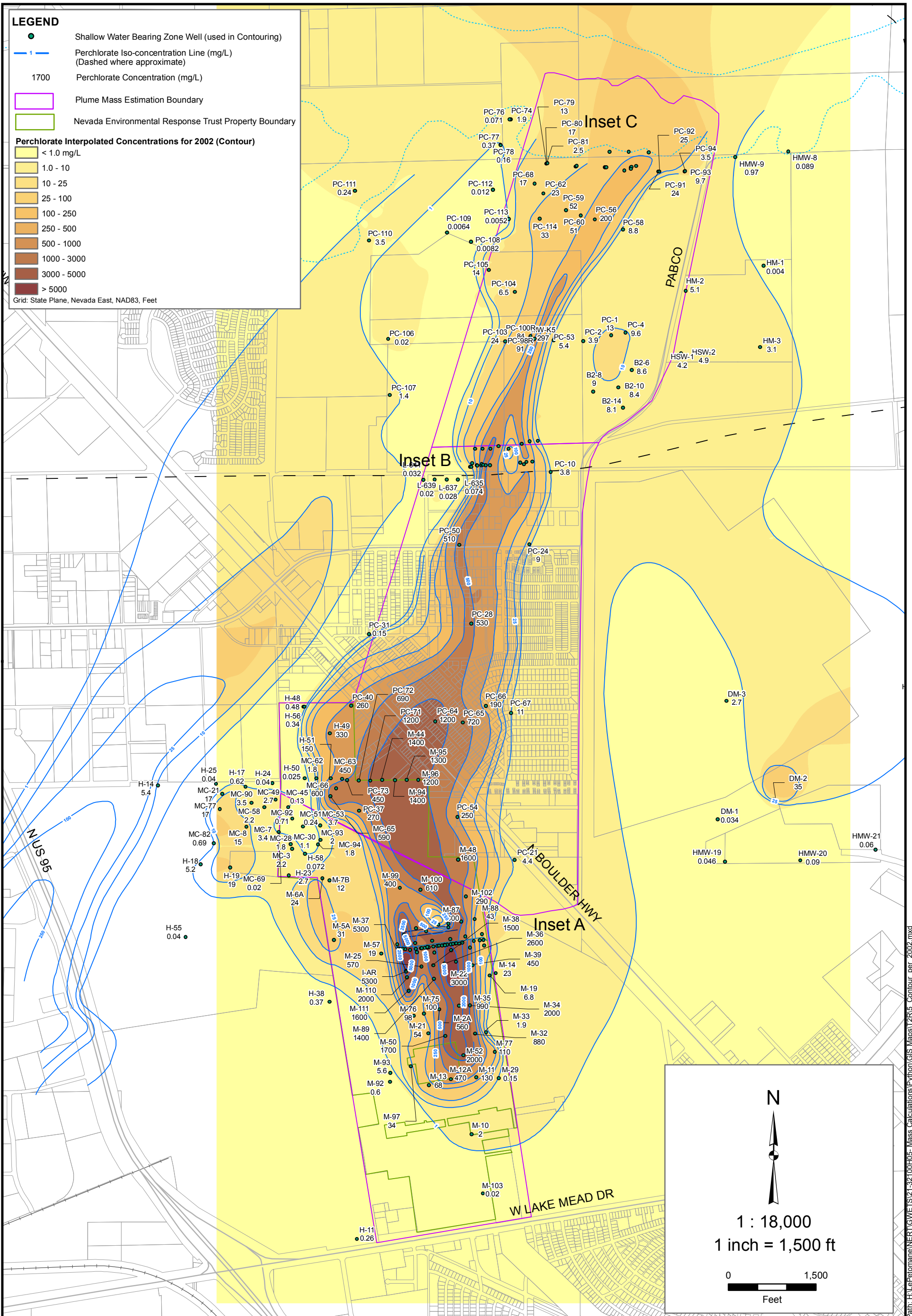
Date: 8/29/2013

Contract Number: 21-32100H05

Approved by:

Revised:

Figure
3-2b



2200 Powell St., Suite 700, Emeryville, CA 94608

Contour Interpolation of Groundwater Perchlorate (2002)
Nevada Environmental Response Trust Site, Henderson, Nevada

Drafter: EA

Date: 8/29/2013

Contract Number: 21-32100H05

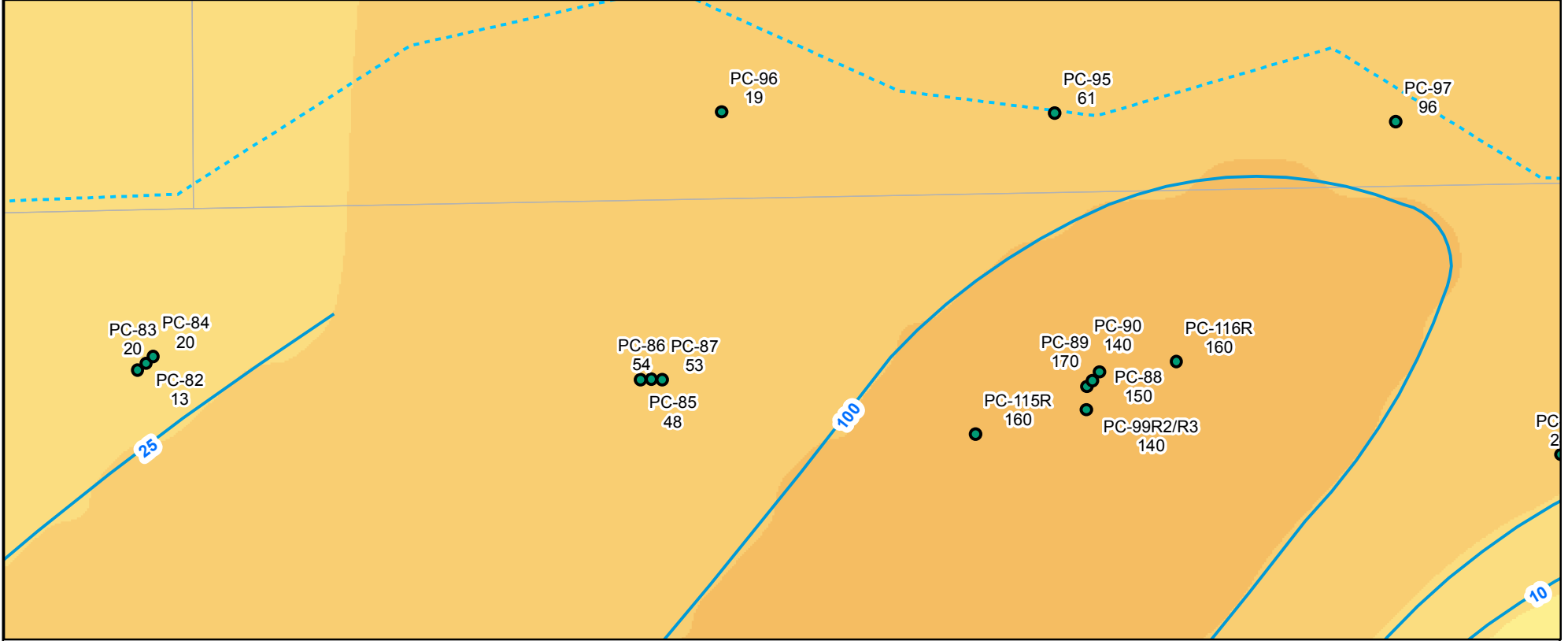
Approved by:

Revised:

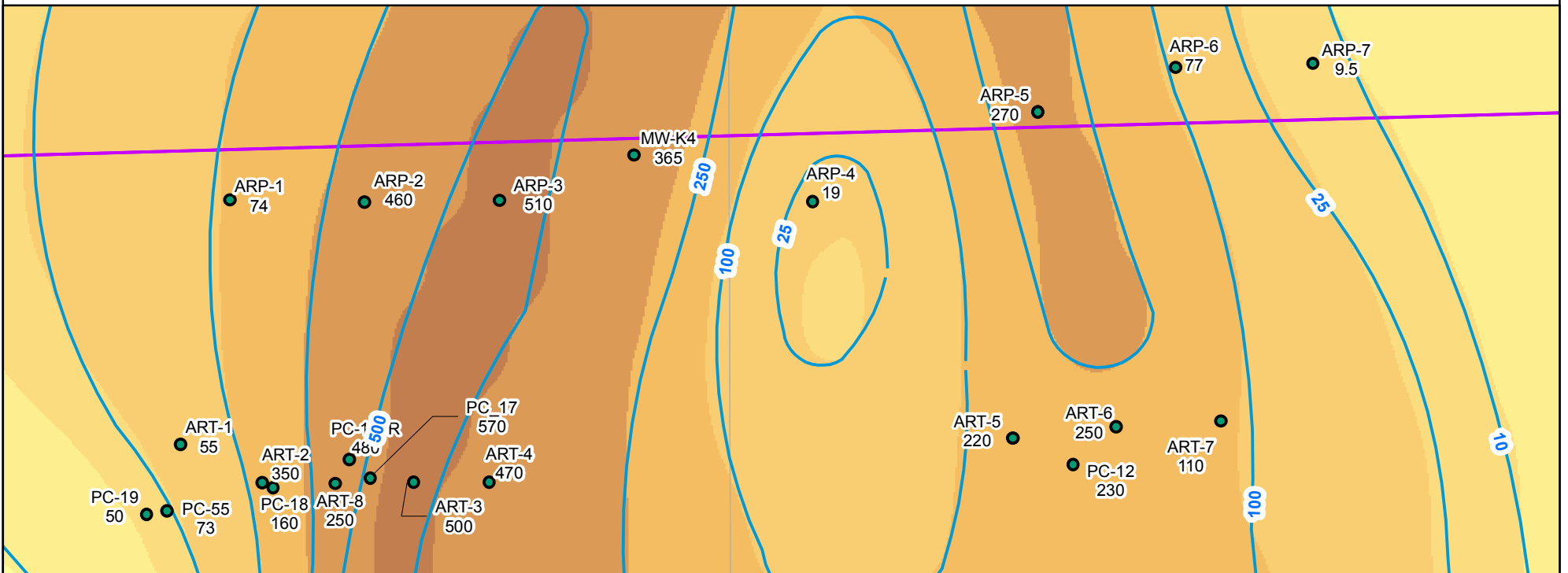
Figure
3-3a

Path: H:\Perchlorate\NERT\GIS\21-32100H05 - Mass Calculations\Python\GIS Maps\12R15_Contour_per_2002.mxd

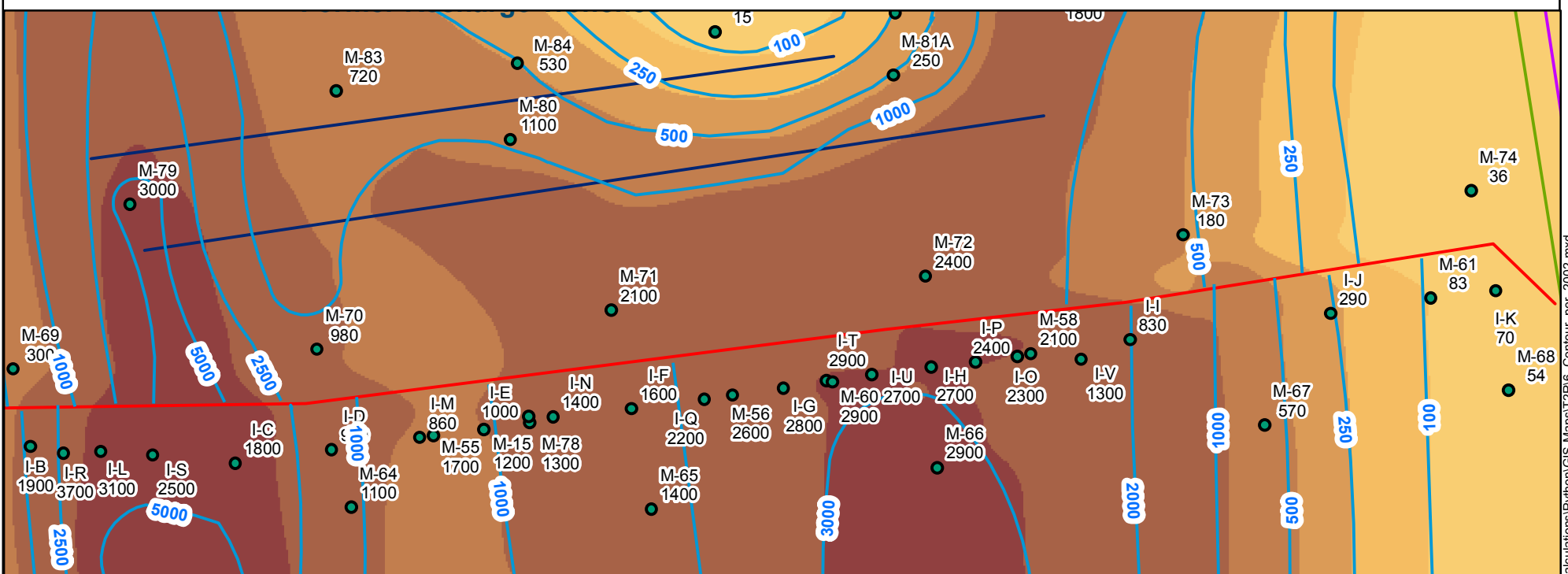
Inset C



Inset B



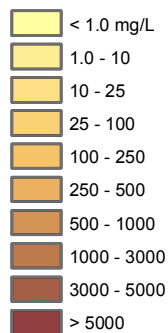
Inset A



LEGEND

- Shallow Water Bearing Zone Well (used in Contouring)
- - - Perchlorate Iso-concentration Line (mg/L)
(Dashed where approximate)
- 1700 Perchlorate Concentration (mg/L)
- Plume Mass Estimation Boundary

Perchlorate Interpolated Concentrations for 2002 (Contour)

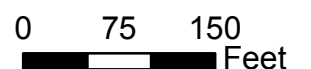


N



1 : 1,800

1 inch = 150 ft



Grid: State Plane, Nevada East, NAD83, Feet



2200 Powell St., Suite 700, Emeryville, CA 94608

Contour Interpolation of Groundwater Perchlorate (2002)
Nevada Environmental Response Trust Site, Henderson, Nevada

Drafter: EA

Date: 8/29/2013

Contract Number: 21-32100H05

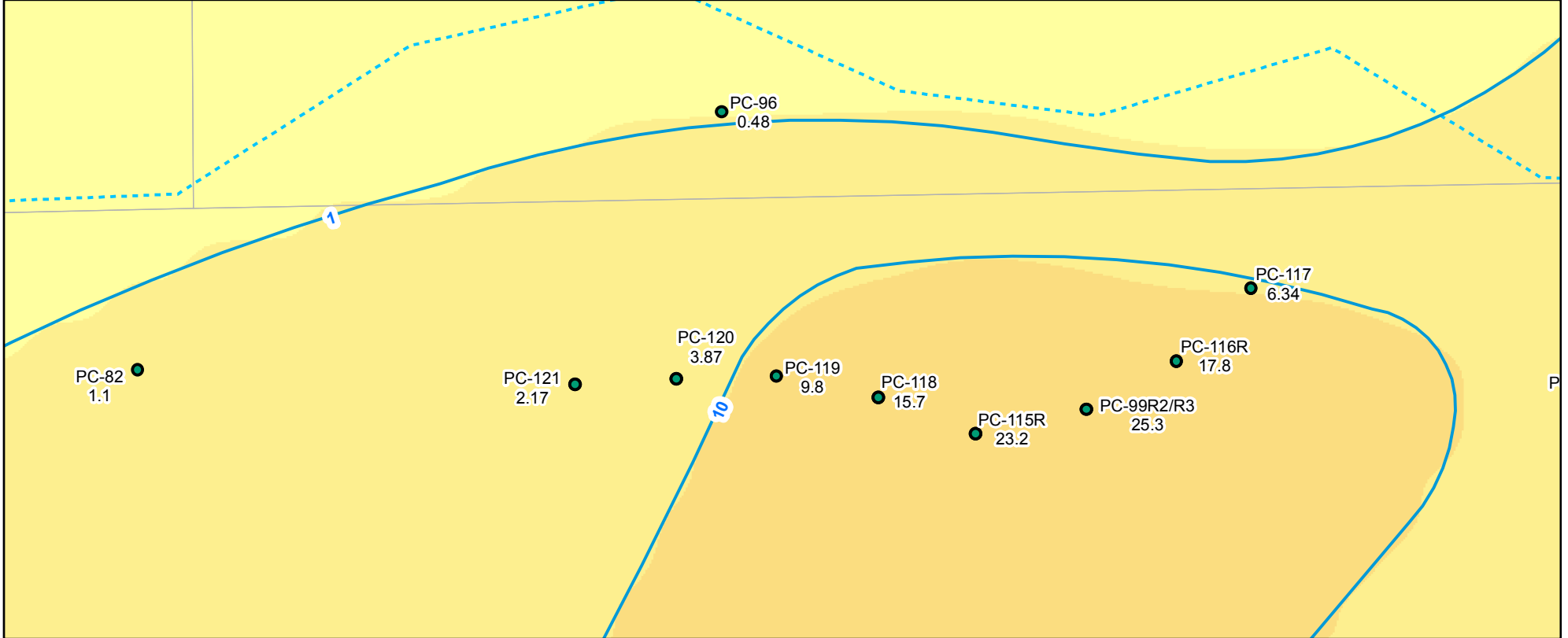
Approved by:

Revised:

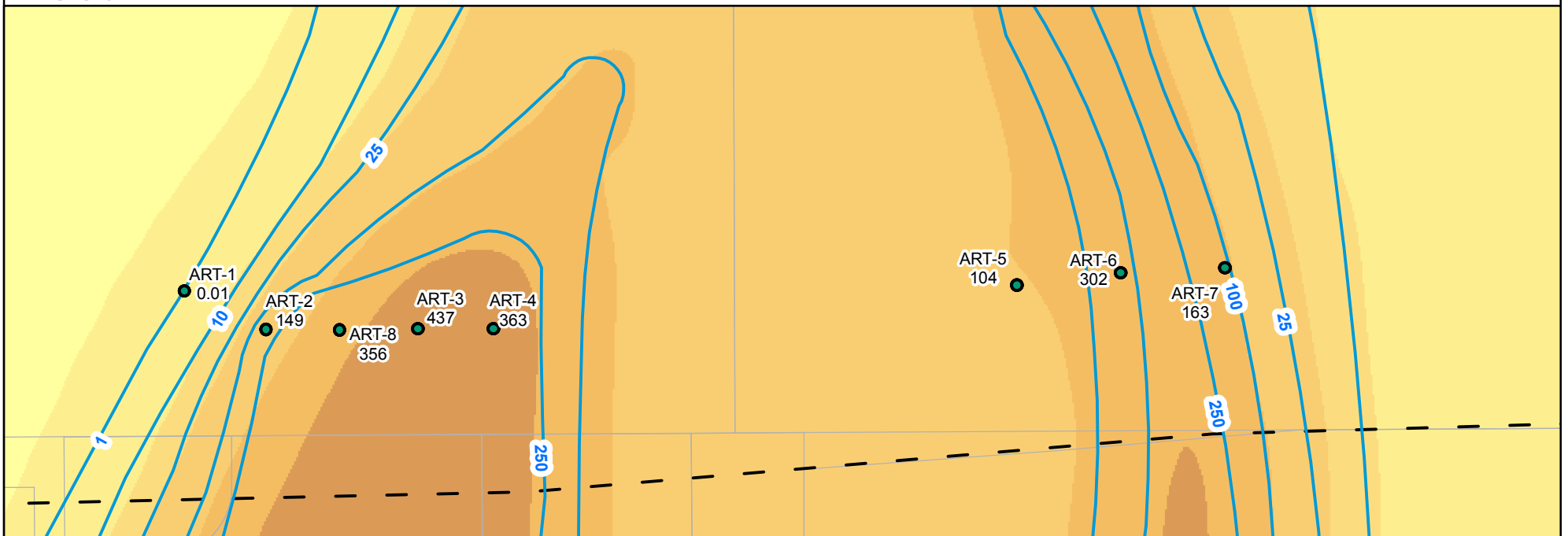
Figure
3-3b

Path: H:\LePetomane\NERT\GWE\TS21-32100H05 - Mass Calculations\Python\GIS Maps\12R16_Contour_per_2002.mxd

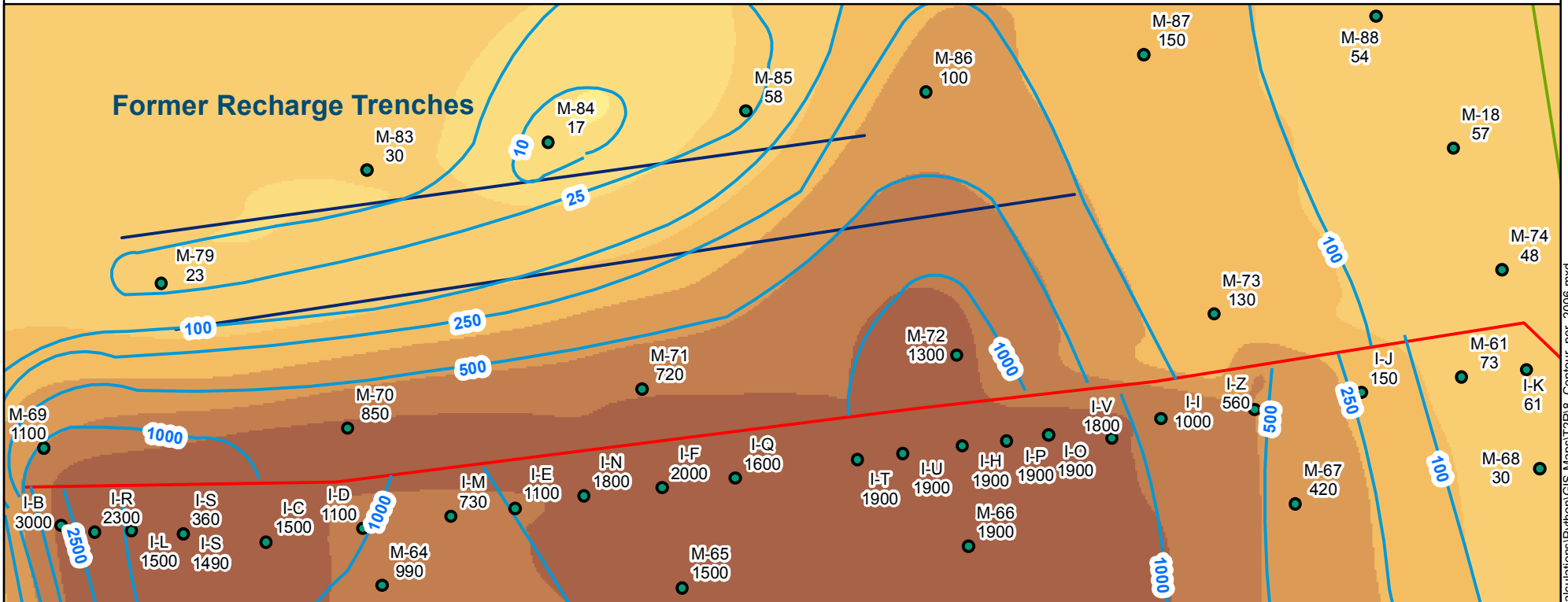
Inset C



Inset B



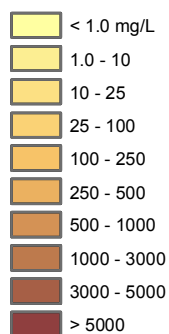
Inset A



LEGEND

- Shallow Water Bearing Zone Well (used in Contouring)
- 1- Perchlorate Iso-concentration Line (mg/L)
(Dashed where approximate)
- 1700 Perchlorate Concentration (mg/L)
- Plume Mass Estimation Boundary

Perchlorate Interpolated Concentrations for 2006 (Contour)

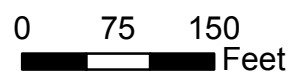


N



1 : 1,800

1 inch = 150 ft



Grid: State Plane, Nevada East, NAD83, Feet



2200 Powell St., Suite 700, Emeryville, CA 94608

Contour Interpolation of Groundwater Perchlorate (2006)
Nevada Environmental Response Trust Site, Henderson, Nevada

Drafter: EA

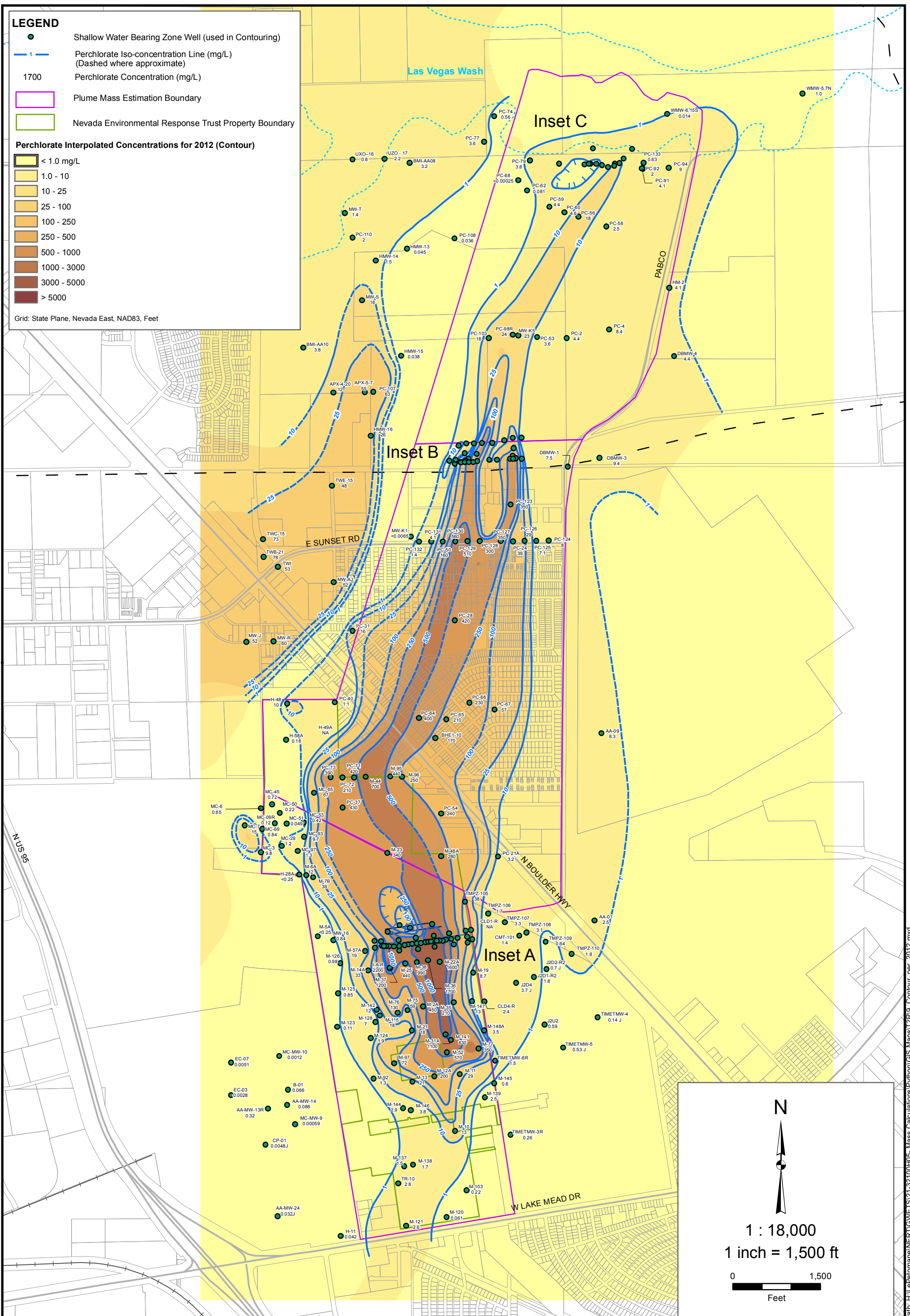
Date: 8/29/2013

Contract Number: 21-32100H05

Approved by:

Revised:

Figure
3-4b



Path: H:\Perchlorate\NERT\GIS\21-32100H05 - Mass Calculations\Python\GIS Maps\21-32100H05 - Contour_per_2012.mxd



2200 Powell St., Suite 700, Emeryville, CA 94608

Contour Interpolation of Groundwater Perchlorate (2012)
Nevada Environmental Response Trust Site, Henderson, Nevada

Drafter: EA

Date: 8/29/2013

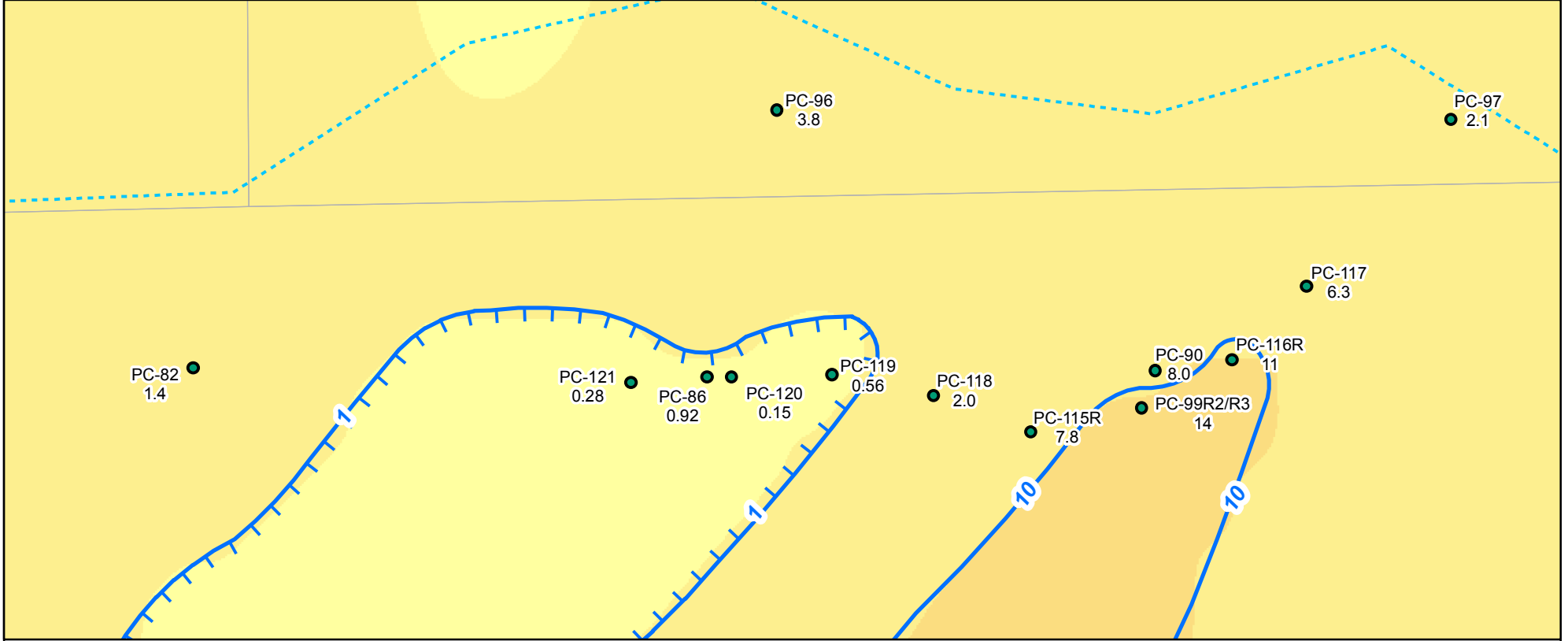
Contract Number: 21-32100H05

Approved by:

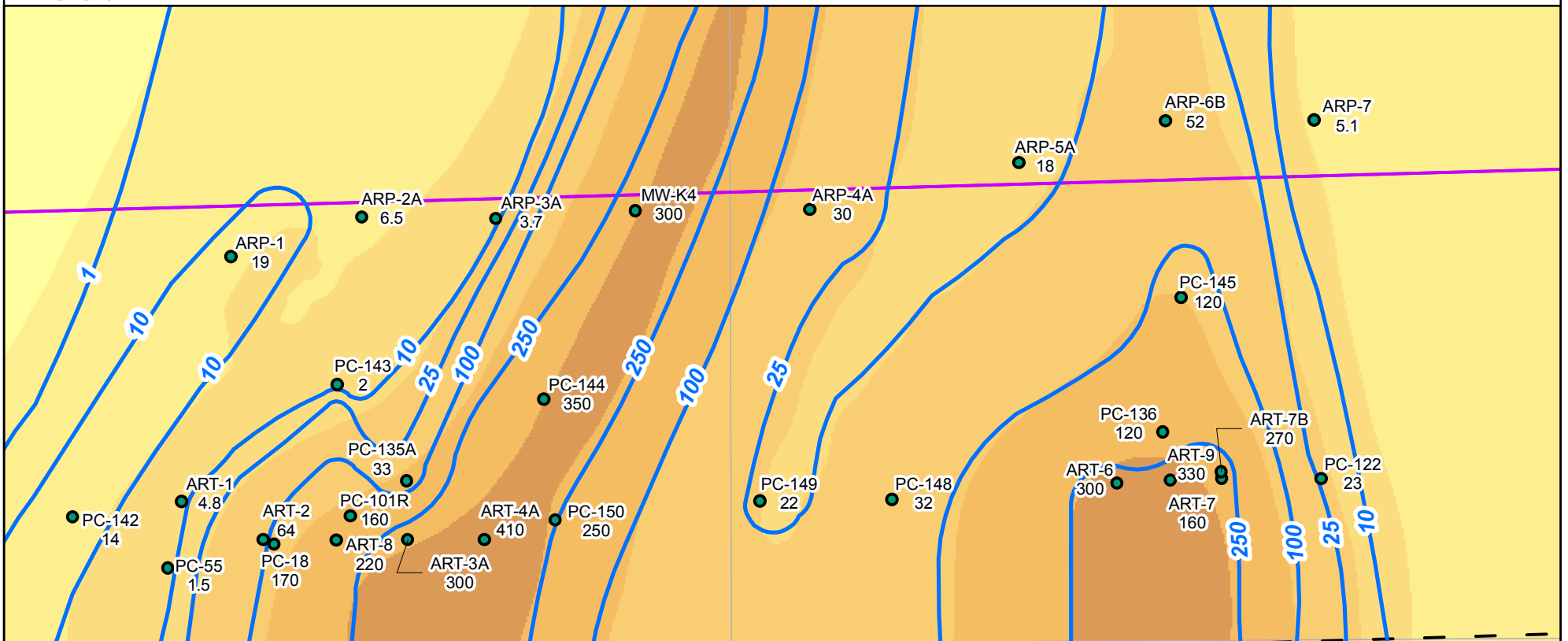
Revised:

Figure
3-5a

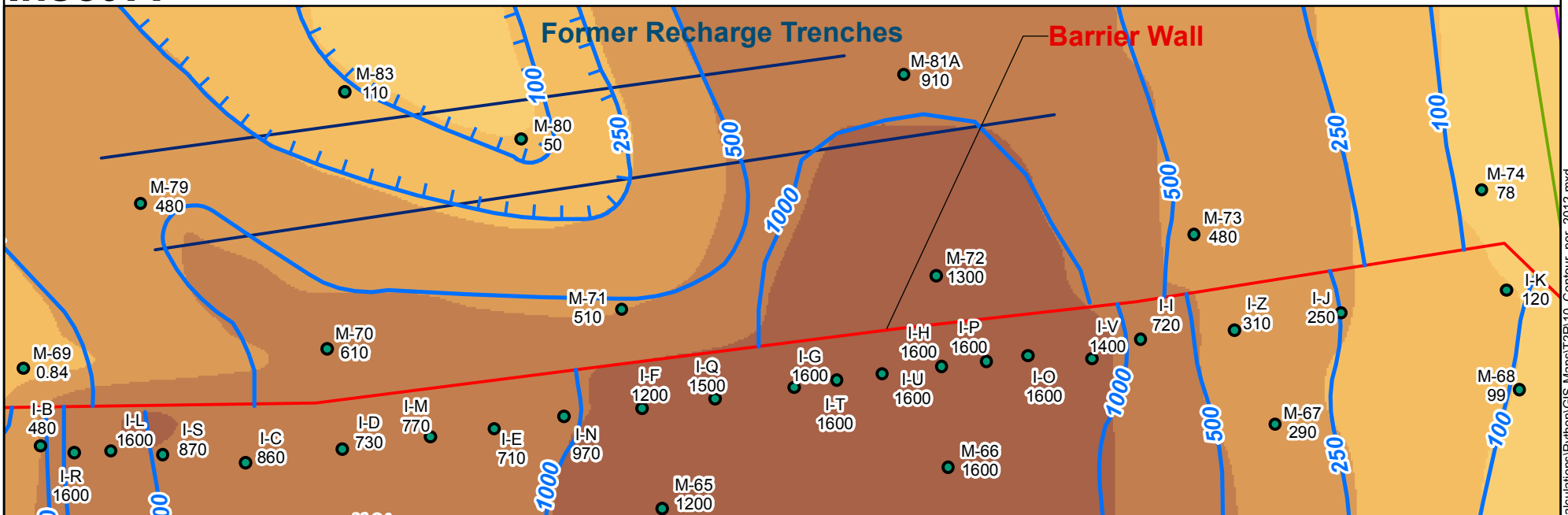
Inset C



Inset B



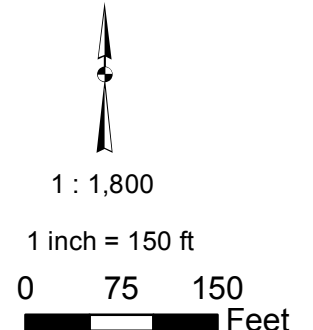
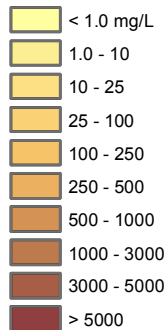
Inset A



LEGEND

- Shallow Water Bearing Zone Well (used in Contouring)
- - - Perchlorate Iso-concentration Line (mg/L)
(Dashed where approximate)
- 1700 Perchlorate Concentration (mg/L)
- ▭ Plume Mass Estimation Boundary

Perchlorate Interpolated Concentrations for 2012 (Contour)N



Grid: State Plane, Nevada East, NAD83, Feet



2200 Powell St., Suite 700, Emeryville, CA 94608

Contour Interpolation of Groundwater Perchlorate (2012)
Nevada Environmental Response Trust Site, Henderson, Nevada

Drafter: EA

Date: 8/29/2013

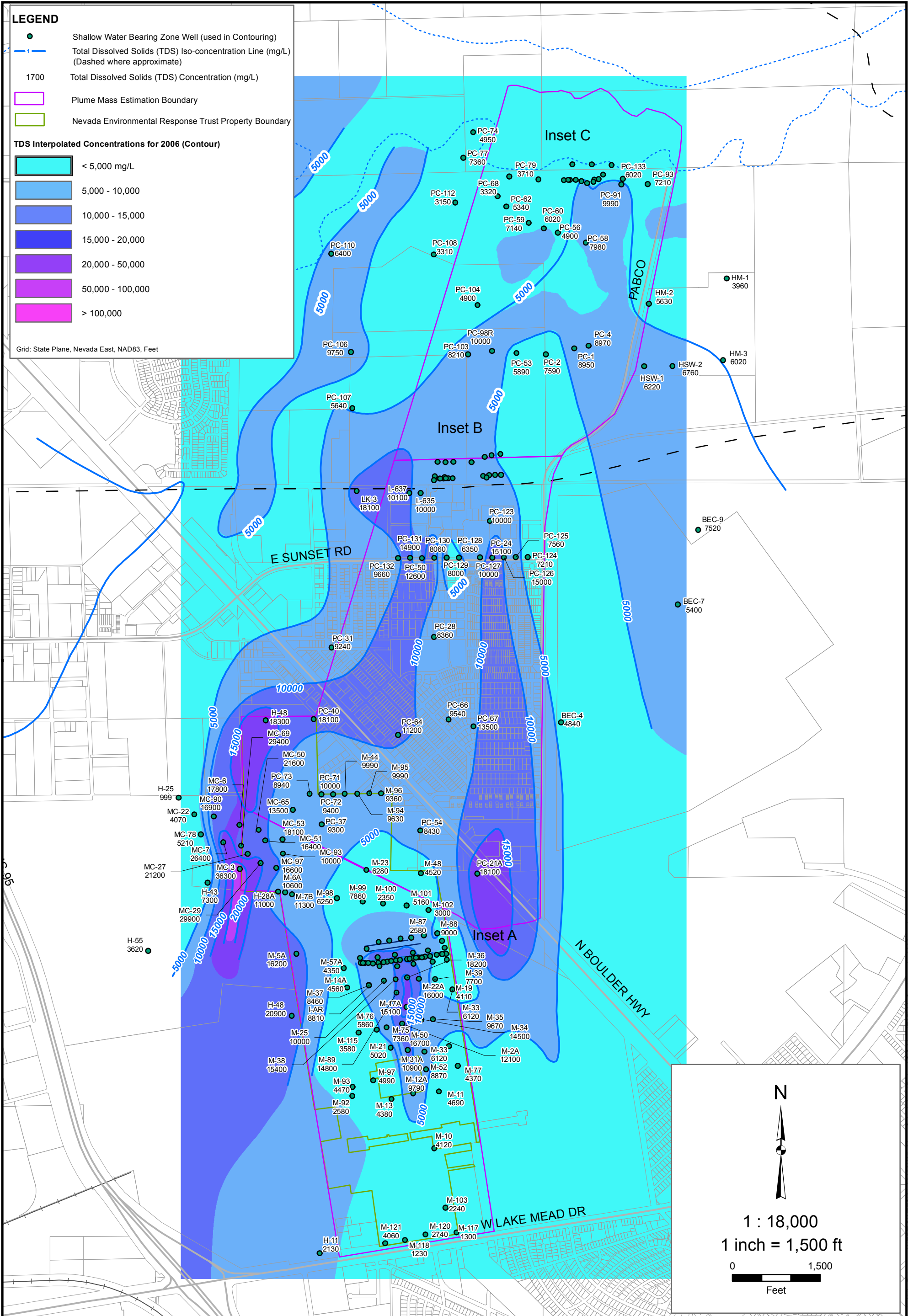
Contract Number: 21-32100H05

Approved by:

Revised:

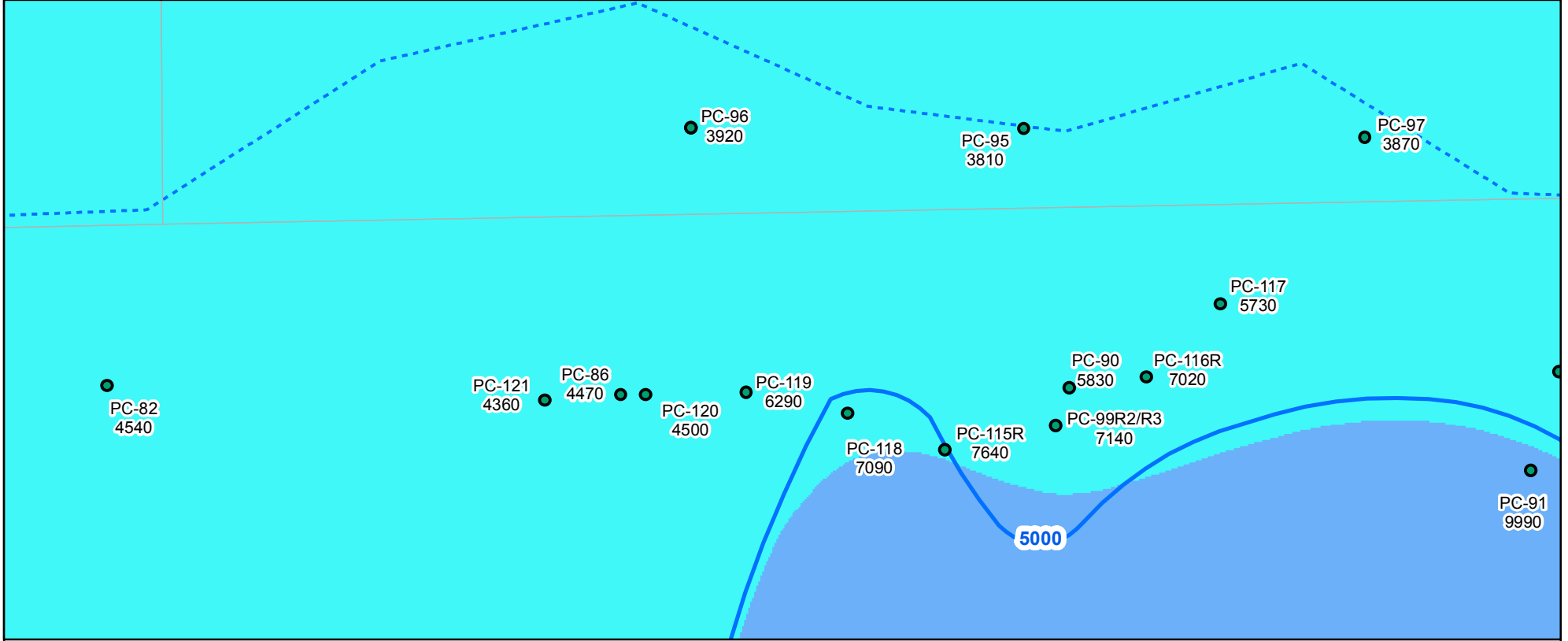
Figure
3-5b

Path: H:\LePétomane\NERT\GWE\TS21-32100H05 - Mass Calculations\Python\GIS Maps\12R110_Contour_per_2012.mxd

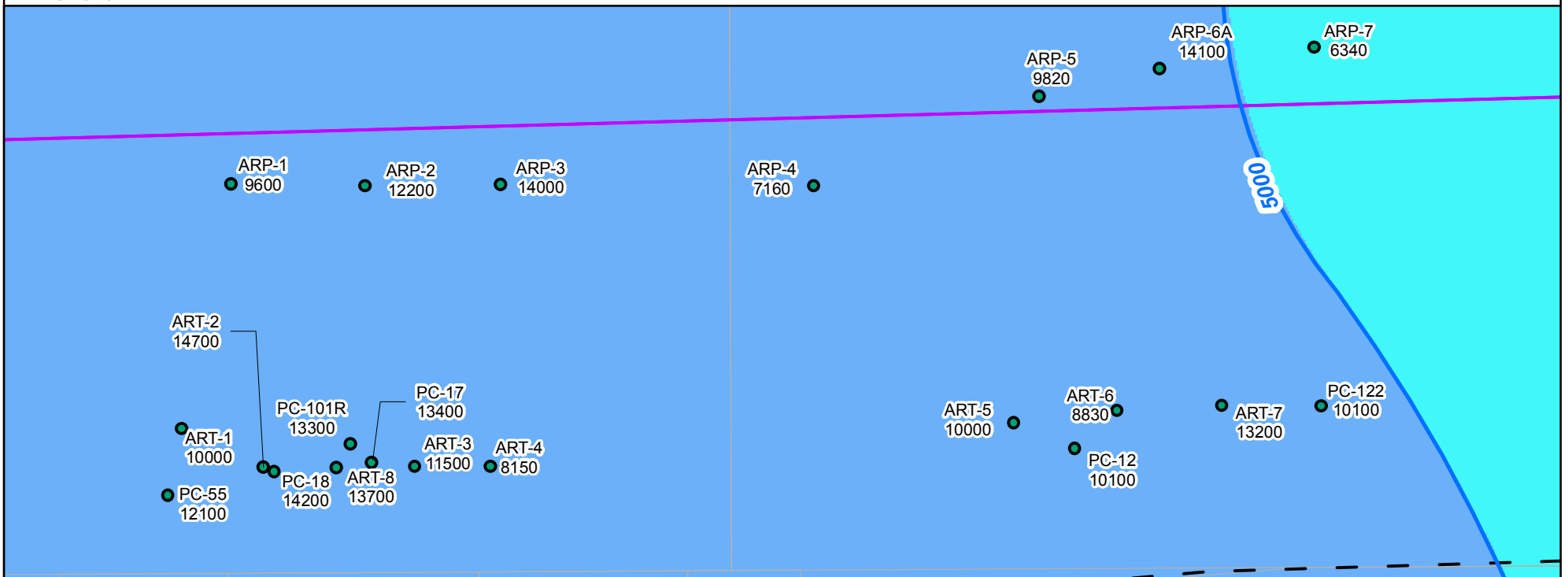


Path: H:\Perfomance\NERT\GIS\21-32100H05 - Mass Calculations\Python\GIS Maps\12R111_Contour_us_2006.mxd

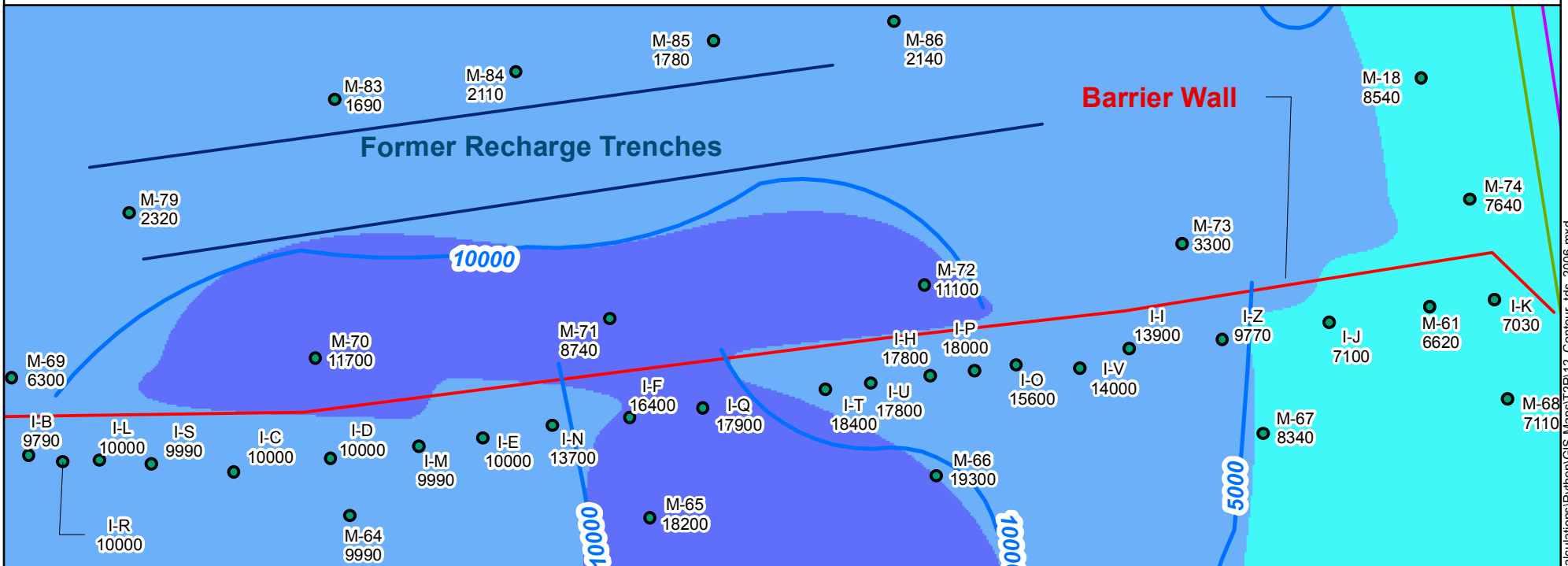
Inset C



Inset B



Inset A



LEGEND

- Shallow Water Bearing Zone Well (used in Contouring)
- - - Total Dissolved Solids (TDS) Iso-concentration Line (mg/L) (Dashed where approximate)
- 1700 Total Dissolved Solids (TDS) Concentration (mg/L)
- Plume Mass Estimation Boundary

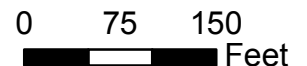
TDS Interpolated Concentrations for 2006 (Contour)

- < 5,000 mg/L
- 5,000 - 10,000
- 10,000 - 15,000
- 15,000 - 20,000
- 20,000 - 50,000
- 50,000 - 100,000
- > 100,000



1 : 1,800

1 inch = 150 ft



Grid: State Plane, Nevada East, NAD83, Feet



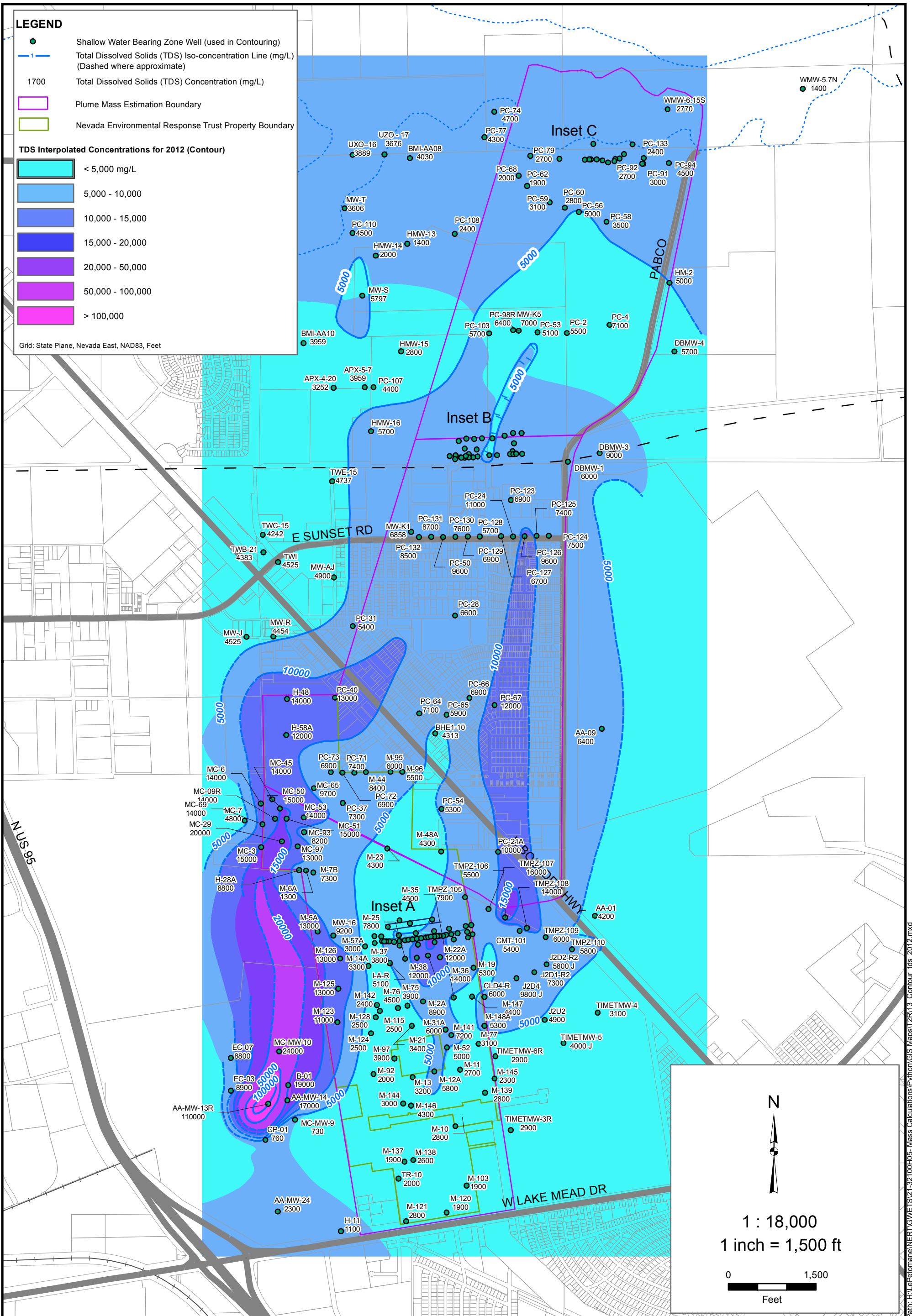
2200 Powell St., Suite 700, Emeryville, CA 94608

Contour Interpolation of Groundwater TDS (2006)
Nevada Environmental Response Trust Site, Henderson, Nevada

Drafter: EA Date: 8/29/2013 Contract Number: 21-32100H05 Approved by: Revised:

Figure
3-6b

Path: H:\LePetomane\NERT\GWE\TS21-32100H05 - Mass Calculations\Python\GIS Maps\12R12_Contour_Lvs_2006.mxd



Contour Interpolation of Groundwater TDS (2012)
 Nevada Environmental Response Trust Site, Henderson, Nevada

Figure
3-7a



2200 Powell St., Suite 700, Emeryville, CA 94608

Drafter: EA

Date: 8/29/2013

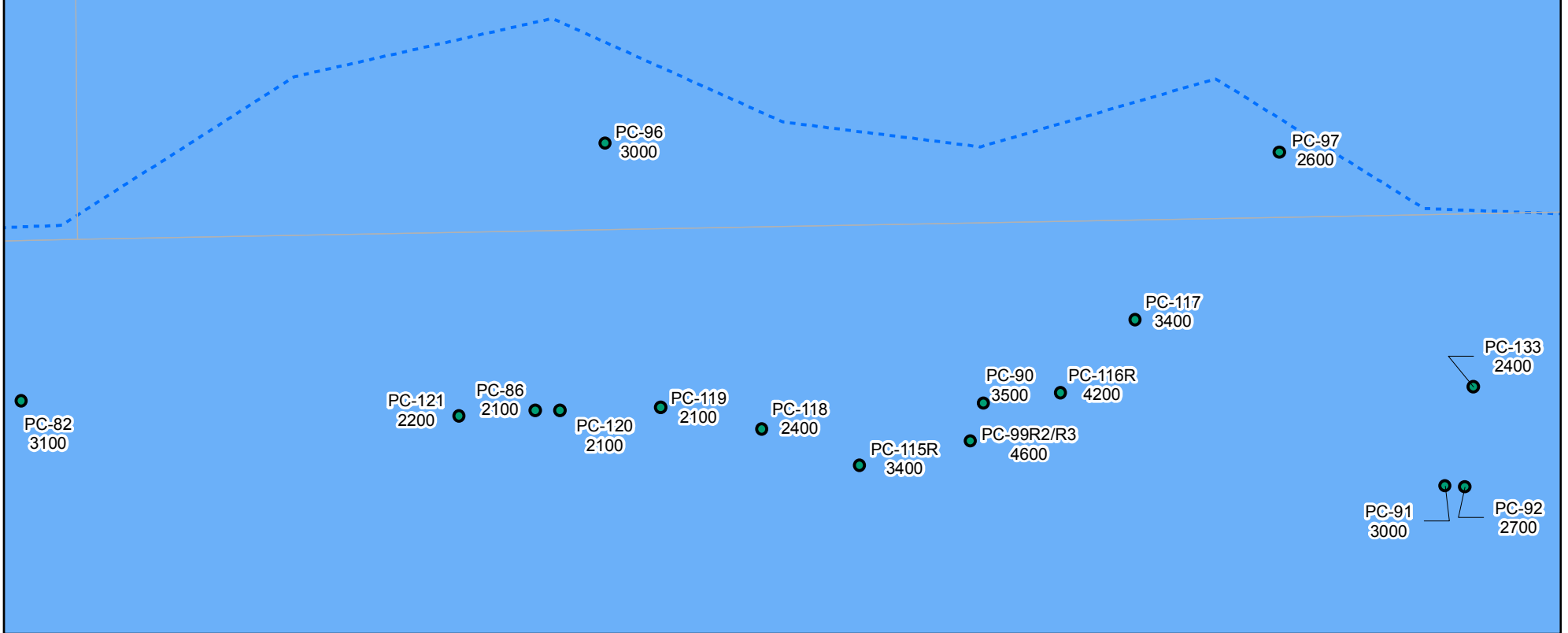
Contract Number: 21-32100H05

Approved by:

Revised:

Path: H:\Perfomance\NERT\GIS\21-32100H05 - Mass Calculations\Python\GIS Maps\12R13 - Contour_105_2012.mxd

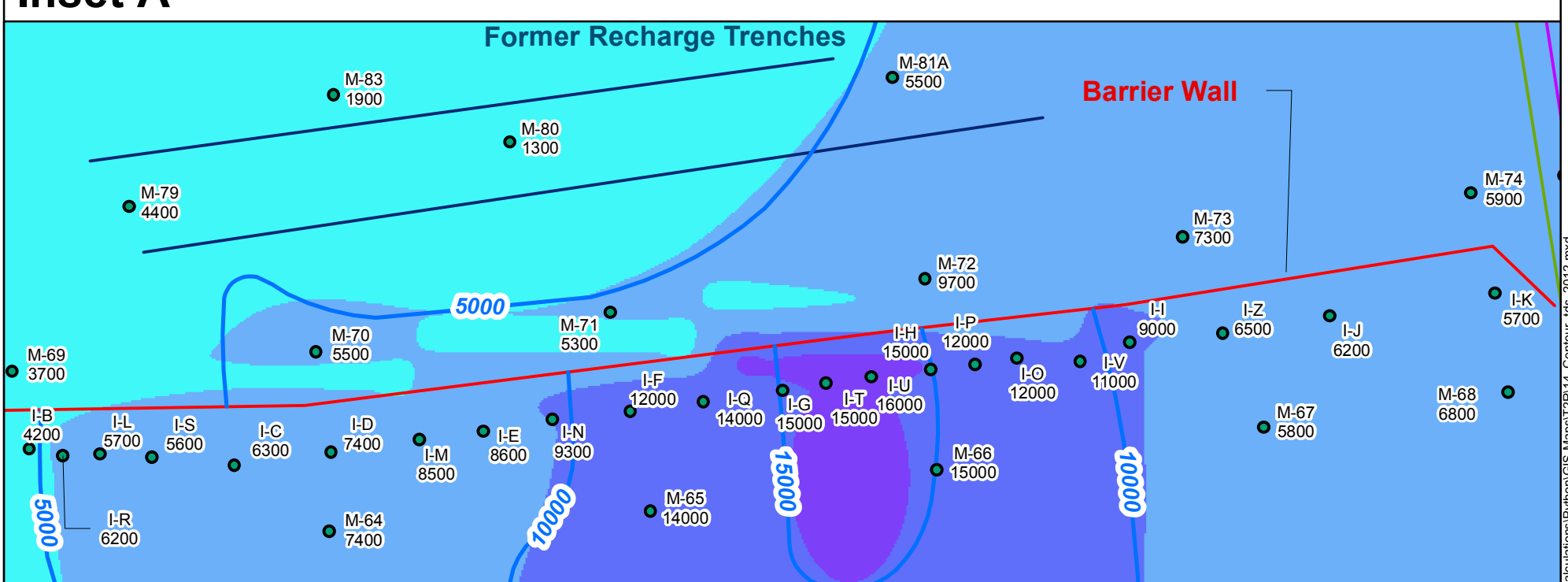
Inset C



Inset B



Inset A



LEGEND

- Shallow Water Bearing Zone Well (used in Contouring)
- - - Total Dissolved Solids (TDS) Iso-concentration Line (mg/L) (Dashed where approximate)
- 1700 Total Dissolved Solids (TDS) Concentration (mg/L)
- Plume Mass Estimation Boundary

TDS Interpolated Concentrations for 2012 (Contour)

	< 5,000 mg/L
	5,000 - 10,000
	10,000 - 15,000
	15,000 - 20,000
	20,000 - 50,000
	50,000 - 100,000
	> 100,000

Grid: State Plane, Nevada East, NAD83, Feet

Scale: 1 : 1,800
1 inch = 150 ft
0 75 150 Feet

North Arrow

Path: H:\LePetomaine\NER\GIS\Map\21-32100H05 - Mass Calculations\Python\GIS Maps\21R14_Contour_Lvs_2012.mxd