

October 8, 2012

NPDES Compliance Coordinator
Nevada Division of Environmental Protection
Bureau of Water Pollution Control
901 South Stewart Street, Suite 4001
Carson City, Nevada 89701-5249

**Re: Report of Minor Leaks of Treated Wastewater from Effluent Pipeline
NPDES Permit NV0023060**

Dear NPDES Compliance Coordinator:

The Nevada Environmental Response Trust (NERT) maintains NPDES Permit NV0023060 for discharge of treated water to the Las Vegas Wash, as part of their on-going effort to capture and treat groundwater containing perchlorate in the Henderson area. Per Section II.A.3., *Noncompliance, Unauthorized Discharge, Bypassing and Upset*, of the permit, ENVIRON International Corporation (ENVIRON), on behalf of NERT, informed Mr. Jeryl Gardner, Bureau of Water Pollution Control, via telephone conversation on October 2, 2012, that two minor leaks of treated wastewater (meeting discharge limitations) from the effluent pipeline were discovered on October 1, 2012. The leaks were repaired on October 2, 2012. This correspondence serves as written notification of these leaks, which are detailed below.

Per Section II.A.3.b. of the permit, the written report shall include the following information:

i. Time and date of discharge

The leaks were discovered and reported by BMI to Mr. Greg Lovato, Bureau of Corrective Actions, on October 1, 2012. In turn, Mr. Lovato notified ENVIRON. In turn, ENVIRON notified Mr. Russell Speckin from Veolia Water North America (Veolia), who operates the treatment facility on behalf of NERT, at approximately 1:45pm on October 1, 2012. Mr. Speckin immediately went out to the area to investigate the situation.

ii. Exact location and estimated amount of discharge

The minor leaks of treated wastewater from the effluent pipeline were from two locations near Pabco Road, just east of Galleria Drive in Henderson, Nevada. The locations of the leaks are shown on the attached map. One leak was located approximately 1,000 feet east of the intersection of Galleria Drive and Pabco Road (approximate Latitude, Longitude: 36.072058, -114.988393). The other leak was located approximately 1,800 feet northeast of the intersection of Galleria Drive and Pabco Road (approximate Latitude, Longitude: 36.076788, -114.989800). Discharge for both leak locations is estimated at less than 50 gallons.

iii. Flow path and any bodies of water which the discharge reached

The discharged water stayed localized around the leak areas, wetting the soil beneath the pipeline. The discharge did not flow onto any roadway or into any body of water.

iv. The specific cause of the discharge

The minor leak of treated wastewater at both locations was caused by debris trapped in the air release valves, which prevented the valves from sealing properly, thus allowing water to escape through the valve. Debris appears to have been washed into the valves from the recent storm activity and subsequent flooding in the area.

v. The preventive and/or corrective actions taken.

Veolia cleaned and repaired the air release valves at both leak locations on October 2, 2012. The ground beneath both leak locations is now dry. Future preventative action will include detailed inspection of all air release valves after any storm/flooding activity in the area of the effluent pipeline.

Should you have any questions concerning this correspondence, please contact Kimberly Kuwabara at (510) 420-2525 or kkuwabara@environcorp.com. Thank you.

Sincerely,



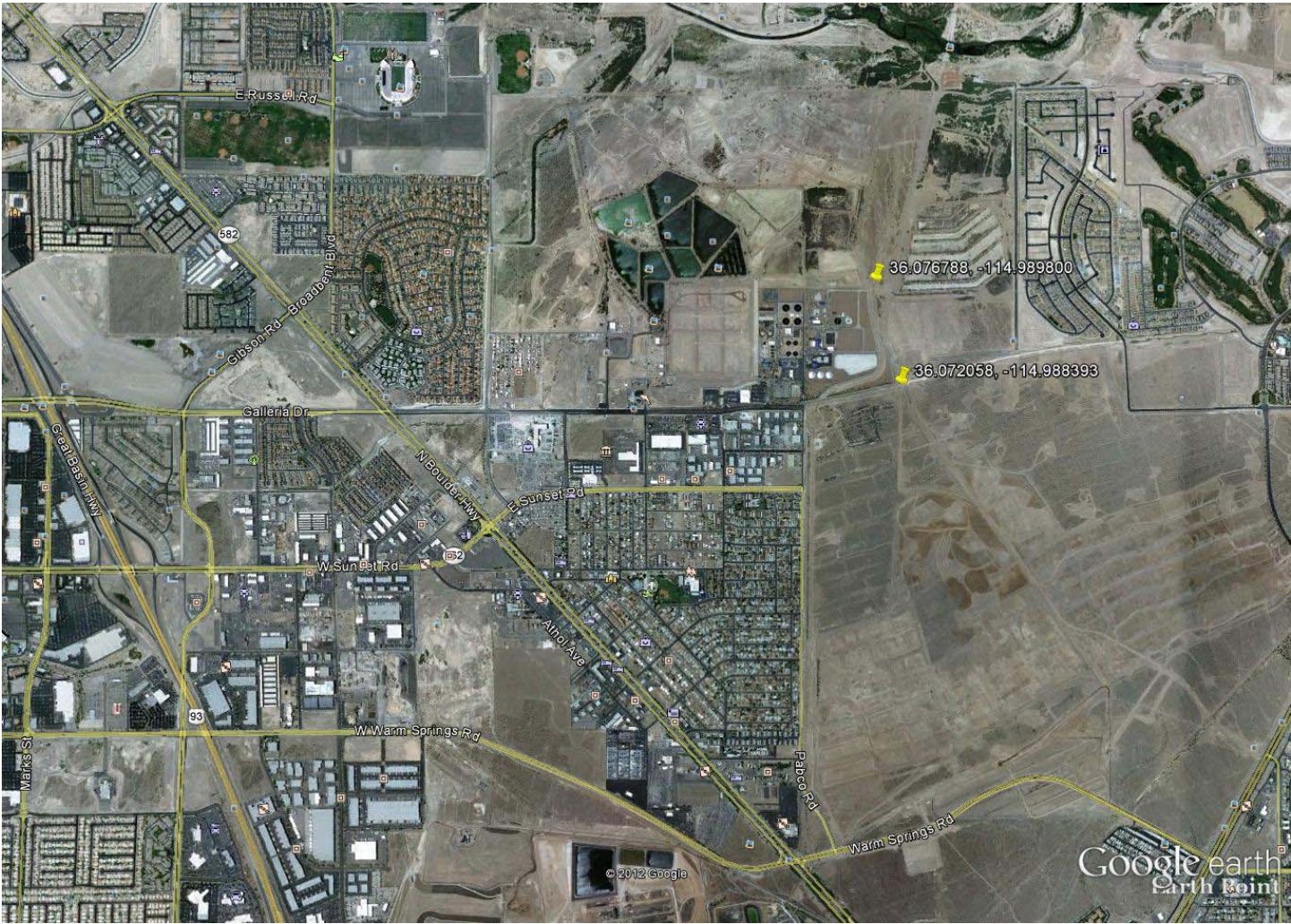
John M. Pekala, PG
Senior Manager
Nevada CEM 2347, exp. 9/20/2014



Kimberly Kuwabara, MS
Manager

cc. Jeryl Gardner, Bureau of Water Pollution Control, NDEP
Greg Lovato, Bureau of Corrective Actions, NDEP
Shannon Harbour, Bureau of Corrective Actions, NDEP
Jay Steinberg, Nevada Environmental Response Trust
Andy Steinberg, Nevada Environmental Response Trust
Tanya O'Neil, Esq., Foley and Lardner
Sachin Chawla, Veolia Water North America
Steve Kubacki, Veolia Water North America
Allan DeLorme, ENVIRON International Corporation
Mark Travers, ENVIRON International Corporation

Attachment



Google earth

