




Legend

 Proposed Excavation Control Areas (ECAs)

Excavation Area Status

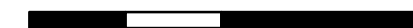
 Excavation In Progress

 Excavation and Backfill/Grading Complete

 Excavation Complete. Backfill/Grading In Progress.

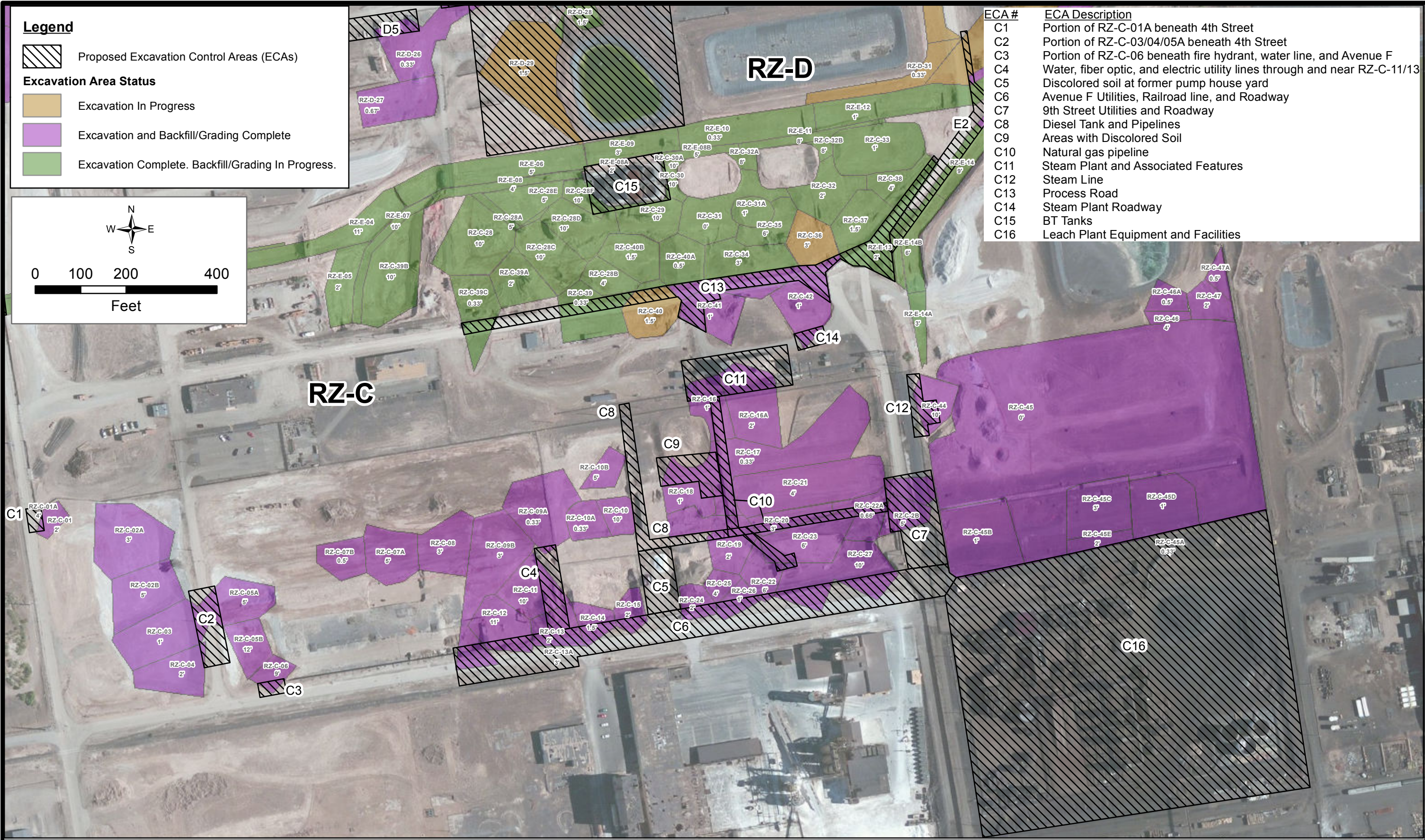


0 100 200 400



Feet

ECA #	ECA Description
C1	Portion of RZ-C-01A beneath 4th Street
C2	Portion of RZ-C-03/04/05A beneath 4th Street
C3	Portion of RZ-C-06 beneath fire hydrant, water line, and Avenue F
C4	Water, fiber optic, and electric utility lines through and near RZ-C-11/13
C5	Discolored soil at former pump house yard
C6	Avenue F Utilities, Railroad line, and Roadway
C7	9th Street Utilities and Roadway
C8	Diesel Tank and Pipelines
C9	Areas with Discolored Soil
C10	Natural gas pipeline
C11	Steam Plant and Associated Features
C12	Steam Line
C13	Process Road
C14	Steam Plant Roadway
C15	BT Tanks
C16	Leach Plant Equipment and Facilities



ENVIRON

6001 Shellmound St., Suite 700, Emeryville, CA 94608

Polygon Excavation Areas & Proposed Excavation Control Areas (ECAs) in RZ-C
 Nevada Environmental Reponse Trust Site, Henderson, Nevada

DRAFT

Work In Progress
 Based on Preliminary Data

Figure

3