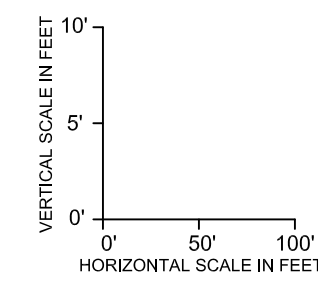
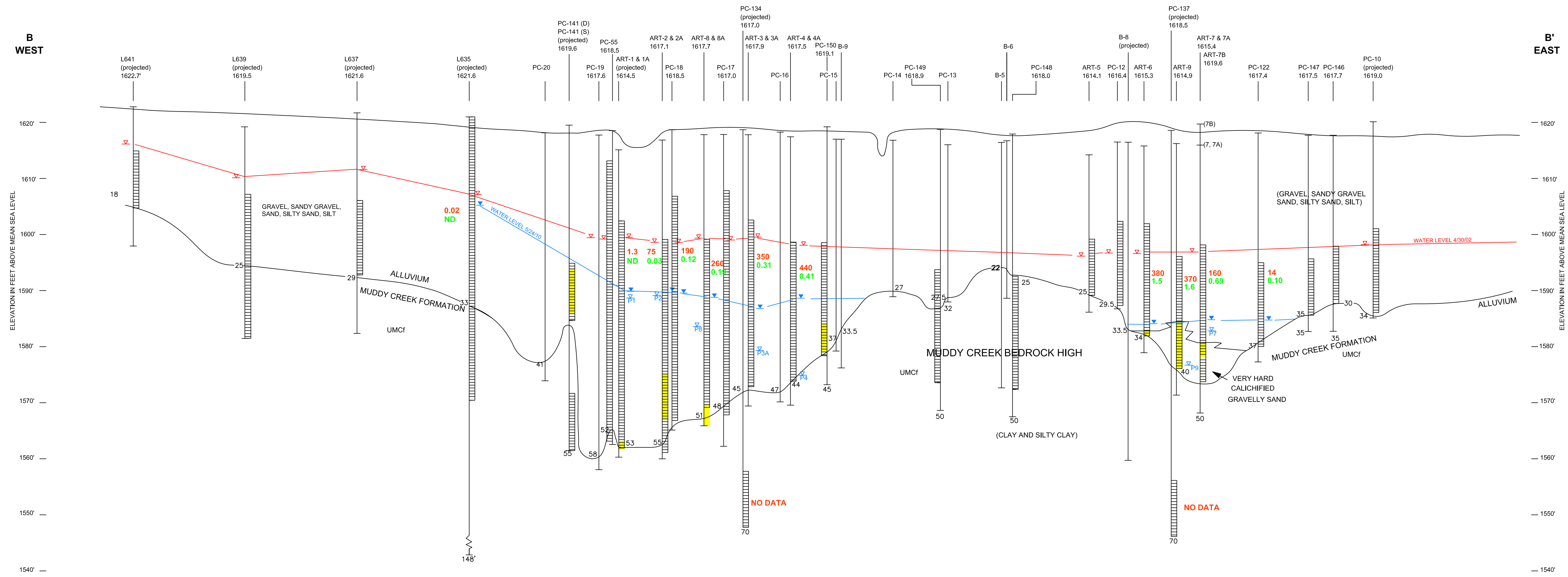


M:\01_Projects\2027_Tronox\2027_02_Perchlorate\151_2010_Annual_Performance_Report\10_2010_APR\Plates - GW Cross Sections.dwg Layout: BB Athens Rd w/ User: dleg Aug 24, 2010 - 12:20pm



LEGEND

- 1750.0' TOP OF CASING ELEVATION
- SCREENED INTERVAL (D) DEEP (M) MIDDLE (S) SHALLOW
- CALICIFIED ZONE
- BLANK CASING
- ALLUVIUM-MUDDY CREEK FM CONTACT (FT BGS)
- UMCI - UPPER MUDDY CREEK FORMATION
- TOTAL DEPTH (FT BGS)
- ▼ STATIC WATER LEVEL PRIOR TO INITIAL PUMPING
- ▼ GROUNDWATER LEVELS MEASURED MAY 2010
- ▼ PUMPING WELL AND WELL NAME, MAY 2010
- 1.9 PERCHLORATE CONCENTRATION AS OF MAY 2010 (mg/L) ND <0.004 mg/L
- 1.9 TOTAL CHROMIUM CONCENTRATION AS OF MAY 2010 (mg/L) ND <0.01 mg/L

DESIGNED BY:	E. KRISH
DRAWN BY:	O. SIVINYAK
CHECKED BY:	J. OTIS
APPROVED BY:	J. OTIS
NO.:	
REVISIONS	
DESCRIPTION:	
DATE:	
BY:	

WEST - EAST HYDROGEOLOGIC CROSS SECTION B-B' ATHENS ROAD WELL FIELD MAY 2010	
Annual Performance Report Tronox Facility, Henderson, Nevada	
SCALE:	as noted
DATE:	08/28/10
PROJECT NUMBER:	2027.02 T.51

PLATE NUMBER:	4
SHEET NUMBER:	X