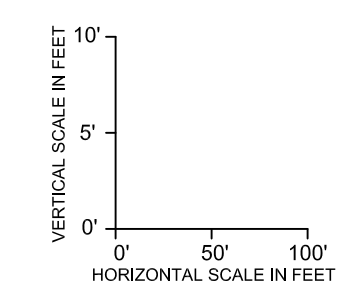
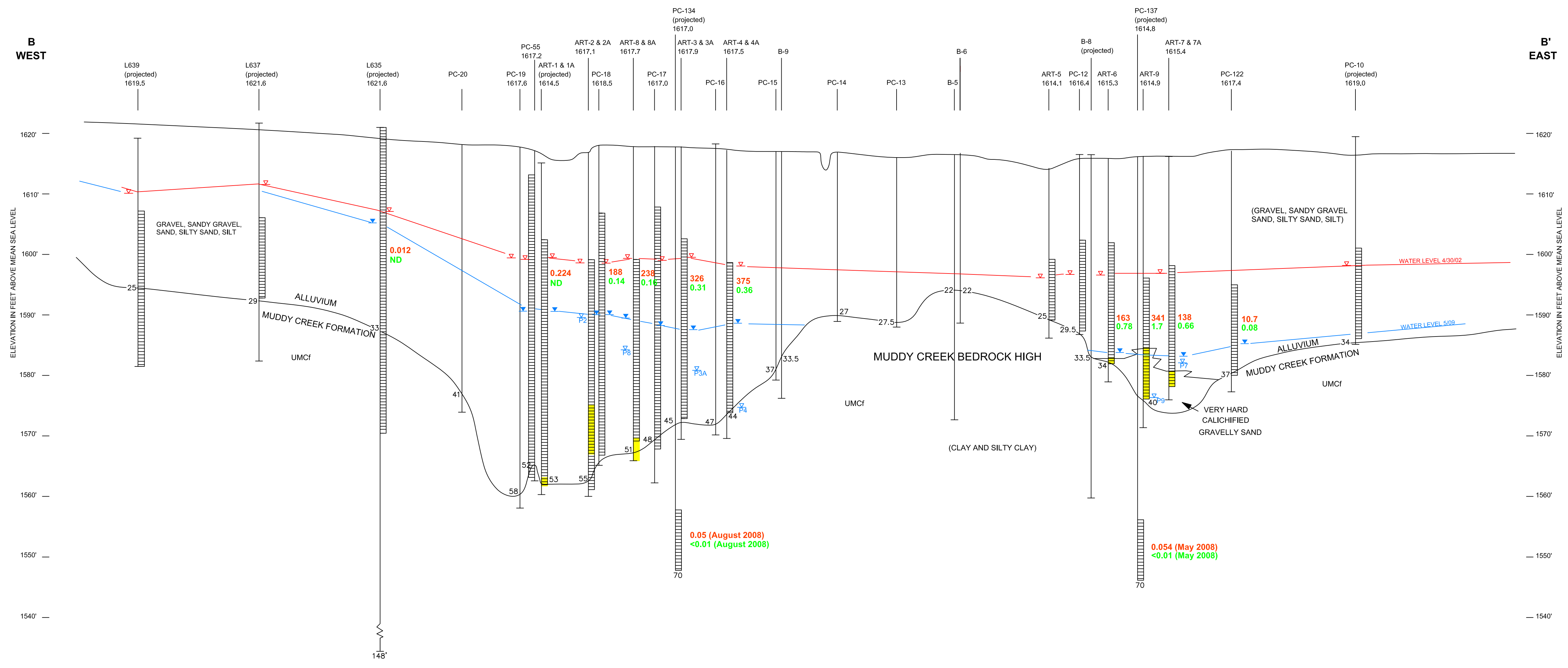


M:\01_Proj\GIS\2027_Tronox\Perchlorate\2009_CZE_Revise\AutoCAD_Figures\P\Plates - GW Cross Sections.dwg Layout: BB Athens Rd w/ User: elg Mar 16, 2010 - 1:03pm



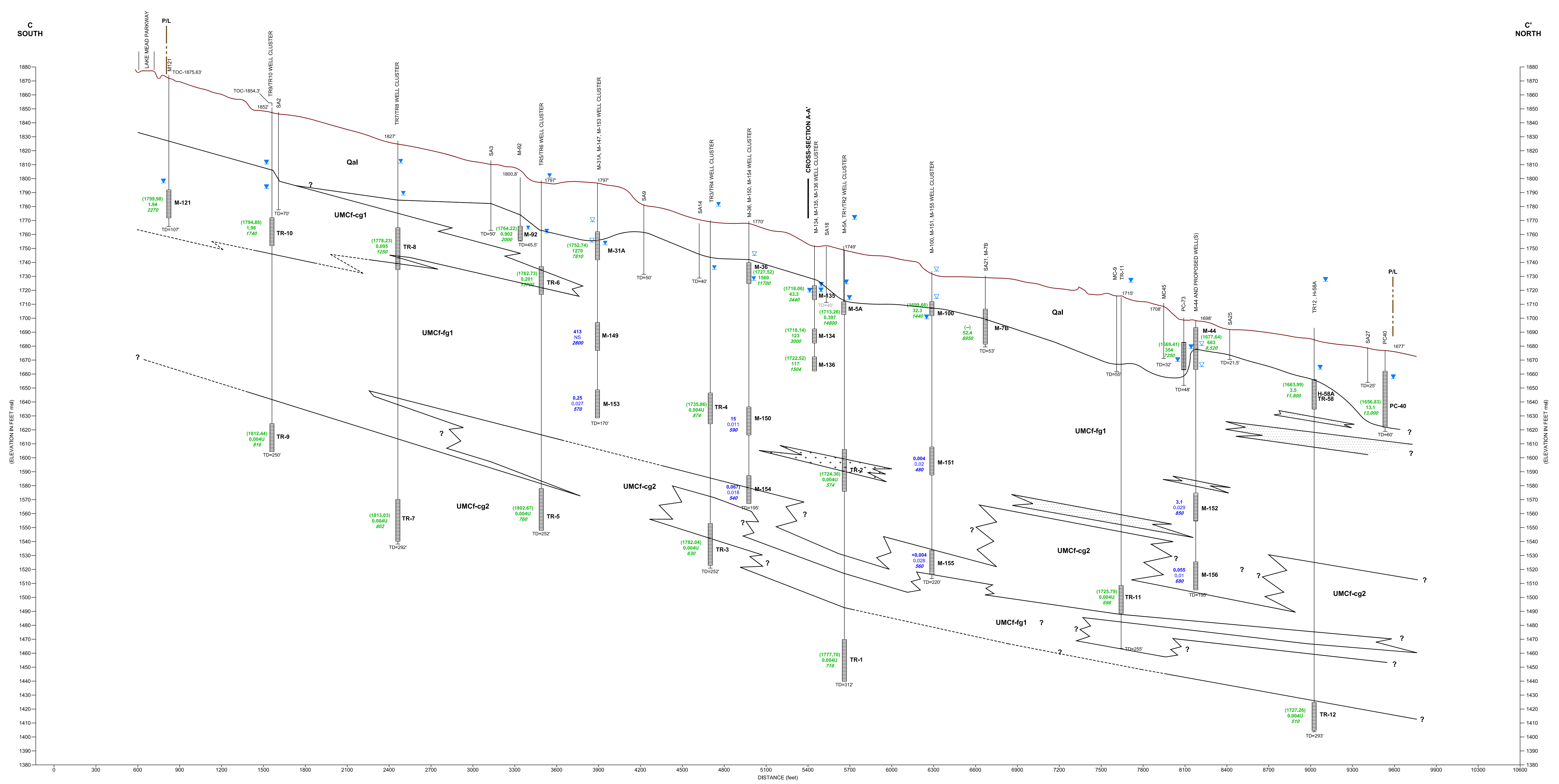
LEGEND

- 1750.0' TOP OF CASING ELEVATION
- SCREENED INTERVAL (D) DEEP (M) MIDDLE (S) SHALLOW
- CALICHIFIED ZONE
- BLANK CASING
- 40' ALLUVIUM-MUDDY CREEK FM CONTACT (FT BGS)
- 57' UMC1 - UPPER MUDDY CREEK FORMATION TOTAL DEPTH (FT BGS)
- ▽ STATIC WATER LEVEL PRIOR TO INITIAL PUMPING
- ▽ GROUNDWATER LEVELS MEASURED MAY 2009
- P PUMPING WELL AND WELL NAME, MAY 2009
- 1.9 PERCHLORATE CONCENTRATION AS OF MAY 2009 (mg/L) ND <0.004 mg/L
- 1.9 TOTAL CHROMIUM CONCENTRATION AS OF MAY 2009 (mg/L) ND <0.01 mg/L

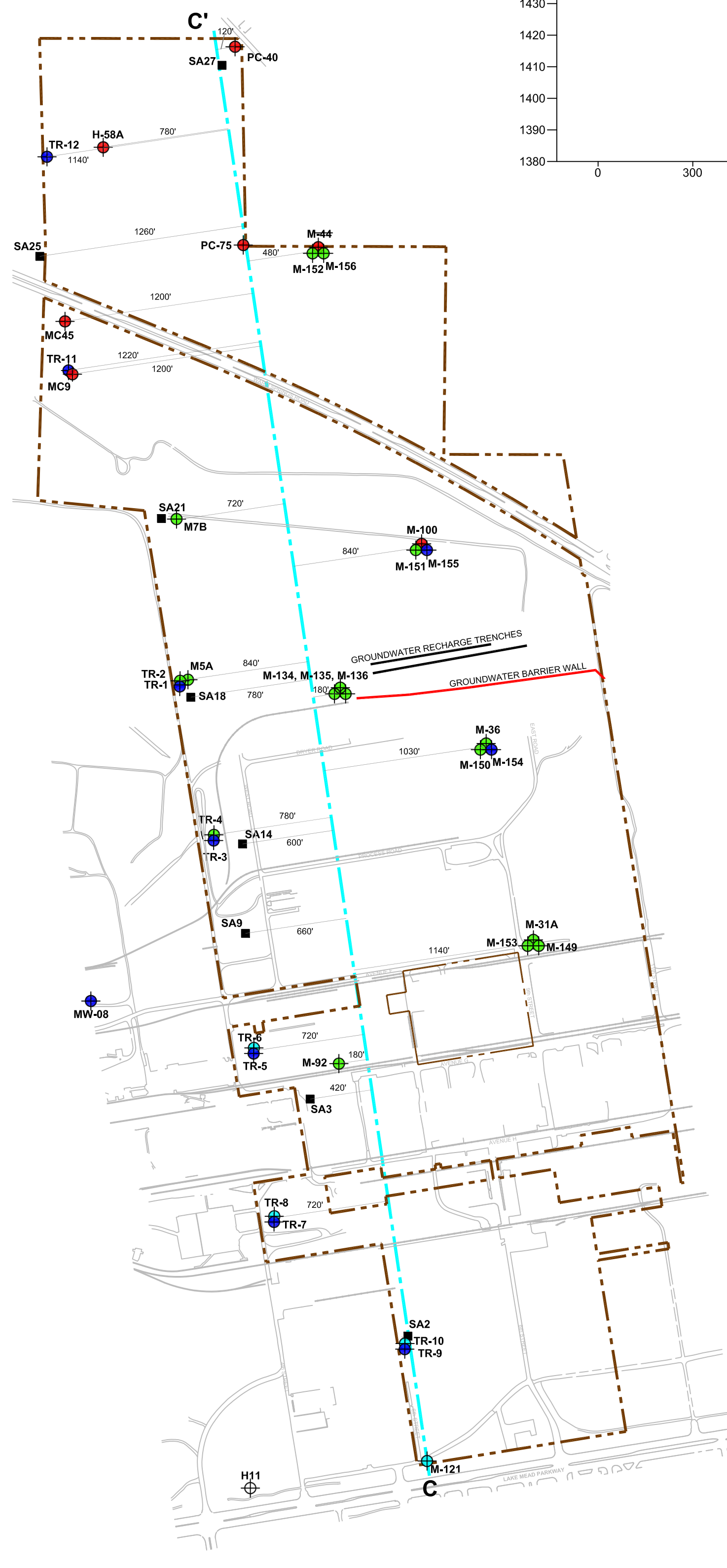
DESIGNED BY:		REVISIONS	
NGEM		NO.	DESCRIPTION
DRAWN BY:		DATE:	
NGEM		BY:	
CHECKED BY:			
NGEM			
APPROVED BY:			
NGEM			

WEST - EAST HYDROGEOLOGIC CROSS SECTION B-B' ATHENS ROAD WELL FIELD MAY 2009
Interim Groundwater Capture Evaluation and Vertical Delineation Report
Tronox Facility, Henderson, Nevada

SCALE: as noted
DATE: 03/15/10
PROJECT NUMBER: 2027.02



INDEX MAP
Scale (Feet)
0 600 1,200



LEGEND

- Qal QUATERNARY ALLUVIUM
- UMCf-fg1 MUDDY CREEK FORMATION FINE-GRAINED FACIES #1
- UMCf-cg1 MUDDY CREEK FORMATION COARSE-GRAINED FACIES #1
- UMCf-cg2 MUDDY CREEK FORMATION COARSE-GRAINED FACIES #2
- C-C' LINE OF GEOLOGICAL SECTION
- PROPERTY BOUNDARY
- MONITORING WELL WITH SCREEN IN THE ALLUVIAL AQUIFER (M1)
- MONITORING WELL WITH SCREEN IN THE MUDDY CREEK FINE GRAIN FACIES (MC1)
- MONITORING WELL WITH SCREEN IN THE MUDDY CREEK COARSE GRAIN FACIES 1 (MC1)
- MONITORING WELL WITH SCREEN IN THE MUDDY CREEK COARSE GRAIN FACIES 2 (MC2)

REFERENCE:
APPENDIX A - ANNUAL REMEDIAL PERFORMANCE REPORT FOR CHROMIUM AND PERCHLORATE, JULY 2009 THROUGH JUNE 2009 (TRONOX LLC, HENDERSON, NEVADA) (AUGUST 2009).
HYDROSTRATIGRAPHIC NOMENCLATURE FOLLOWS UNITED HYDROGEOLOGIC NOMENCLATURE PROPOSED BY NDEP IN JANUARY 6, 2009 LETTER.
INFORMATION ON WELLS MC-9 AND H-58A PROVIDED TO TRONOX BY EDD MCDONNANO IN AN EMAIL TO SUSAN GROWLEY (9-23-2008).

SCALE
0' 150' 300'

PERCHLORATE CONCENTRATION (MAY 2009)
1.1 0.055 2850
IN mg/lugars / l Bar (mg/L)

PERCHLORATE CONCENTRATION (NOVEMBER 2009)
0.055 0.011 680
IN mg/lugars / l Bar (mg/L)

TOTAL DISSOLVED SOLIDS (MAY 2009)
2850
IN mg/lugars / l Bar (mg/L)

TOTAL DISSOLVED SOLIDS (NOVEMBER 2009)
680
IN mg/lugars / l Bar (mg/L)

J NOT REPORTED AT THE PRACTICAL QUANTITATION LIMIT SHOWN
(-) NO WATER LEVEL
NS NOT SAMPLED

EXISTING BORING/WELL IDENTIFICATION
1797' GROUND SURFACE ELEVATION (ft. msl)
GROUNDWATER LEVEL (MAY 2009)
SCREEN INTERVAL
WELL (SCREEN) IDENTIFICATION
TOTAL DEPTH OF BORING/WELL

DESIGNED BY:	NGEM
DRAWN BY:	NGEM
CHECKED BY:	NGEM
APPROVED BY:	NGEM
NO.	
DATE:	
BY:	
REVISIONS	
DESCRIPTION:	

SOUTH - NORTH HYDROGEOLOGIC CROSS SECTION C-C'
Interim Groundwater Capture Evaluation and Vertical Delineation Report
Tronox Facility, Henderson, Nevada

PROJECT NUMBER: 2027_02
DATE: 03/15/10
SCALE: as noted

M:01_Projects2027_TronoxPerchlorate2009_CZE_RevisedAutoCAD_Figures/cross section CC.dwg Layout1 User: oleg Mar 16, 2010 - 3:35pm