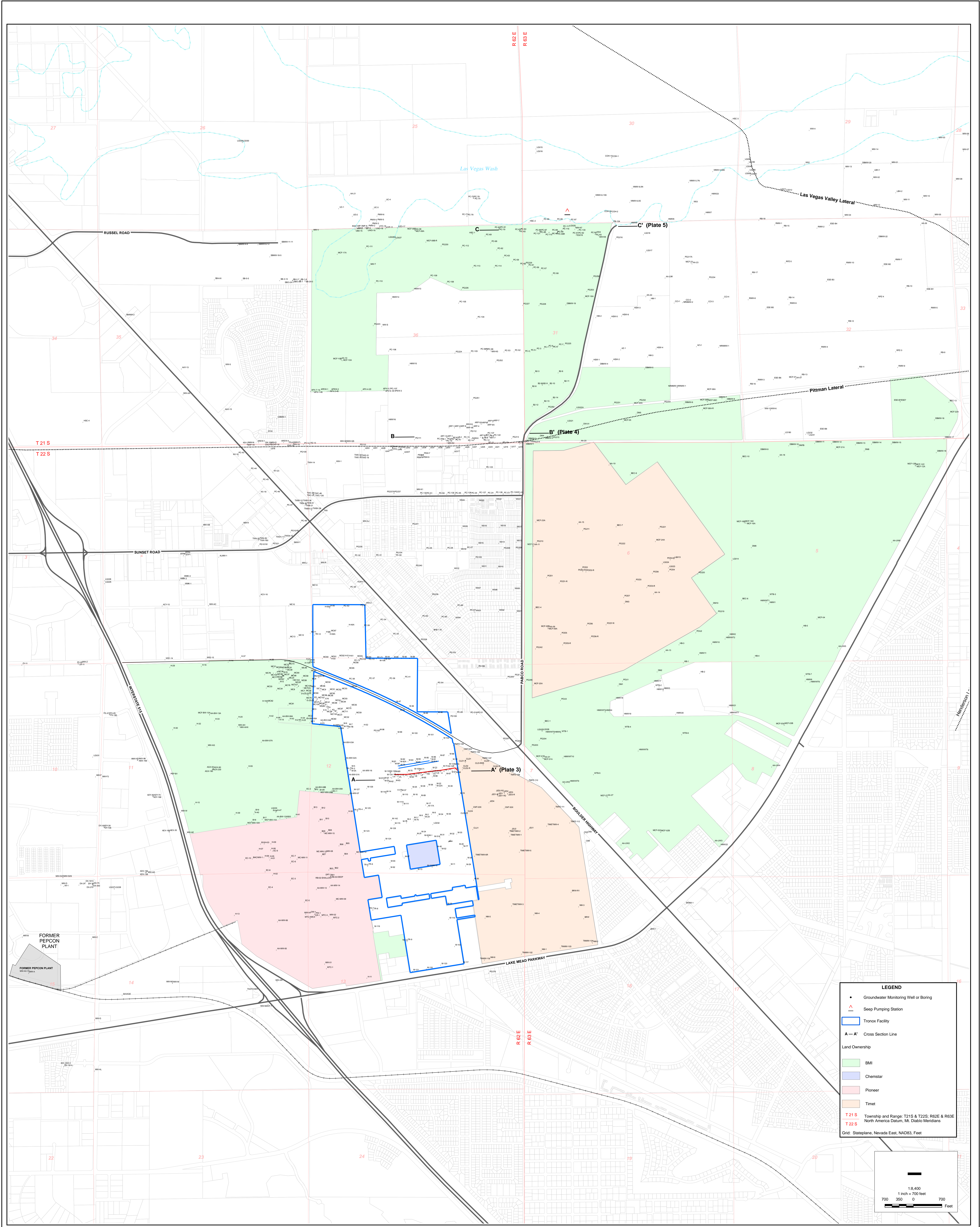


PLATES





SHEET NUMBER: 1	PLATE NUMBER: 1	ALL WELL LOCATION MAP		
		Annual Performance Report Tronox Facility Henderson, Nevada		
SCALE: 1:8,400	DATE: 8/12/2009	PROJECT NUMBER: 2027		

DESIGNED BY:	REVISIONS			
E. Kish	NO.	DESCRIPTION	DATE	BY
DRAWN BY:				
NGEM				
CHECKED BY:				
NGEM				
APPROVED BY:				
NGEM				

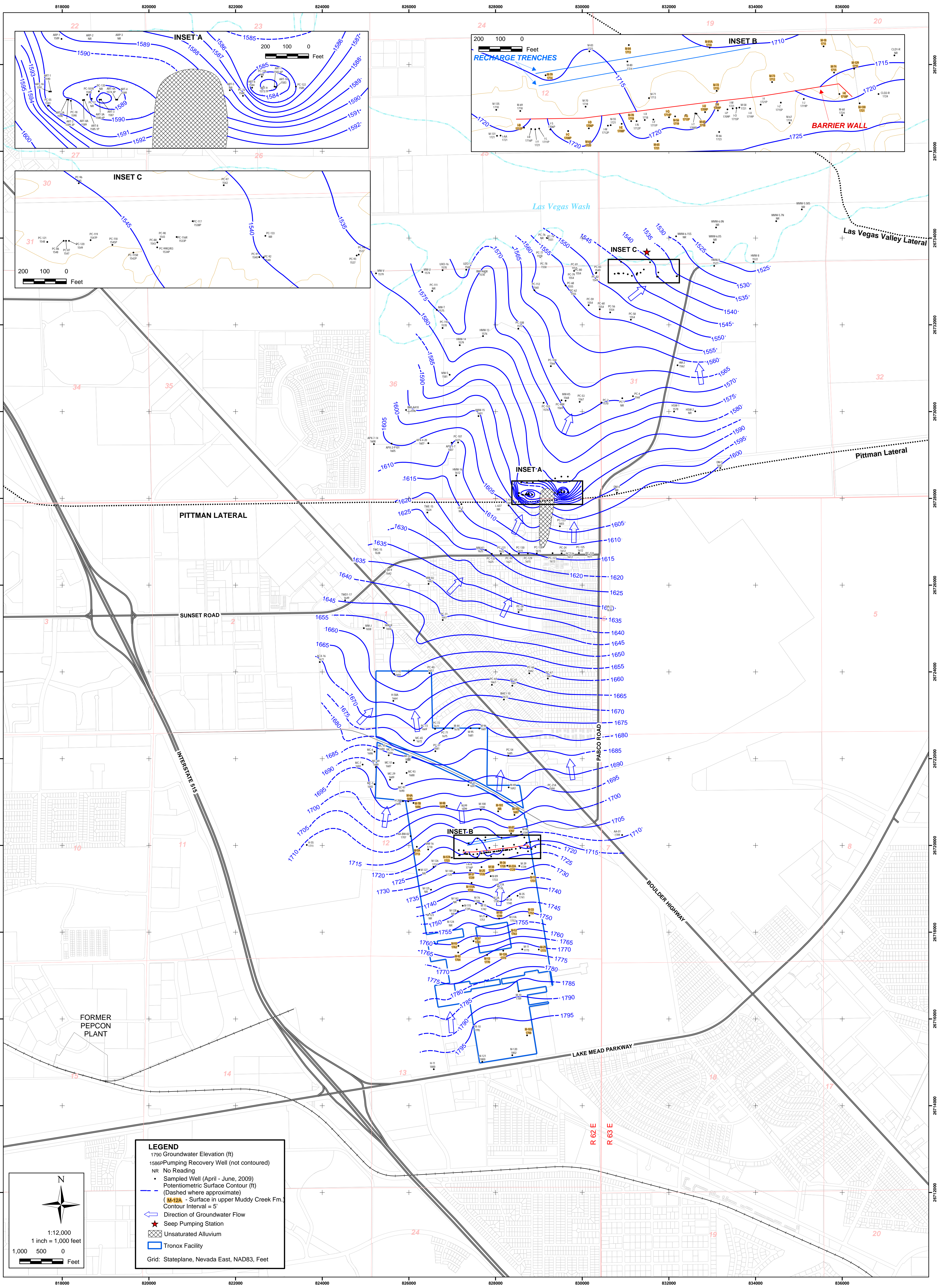


northgate
environmental management, inc.



TRONOX

<http://www.ngem.com>



**POTENTIOMETRIC SURFACE MAP
SHALLOW WATER BEARING ZONE
SECOND QUARTER 2009**
Annual Performance Report
Tronox Facility
Henderson, Nevada

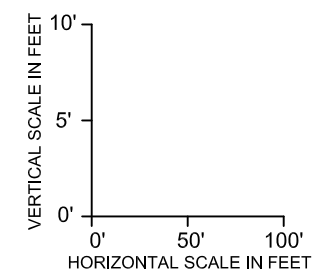
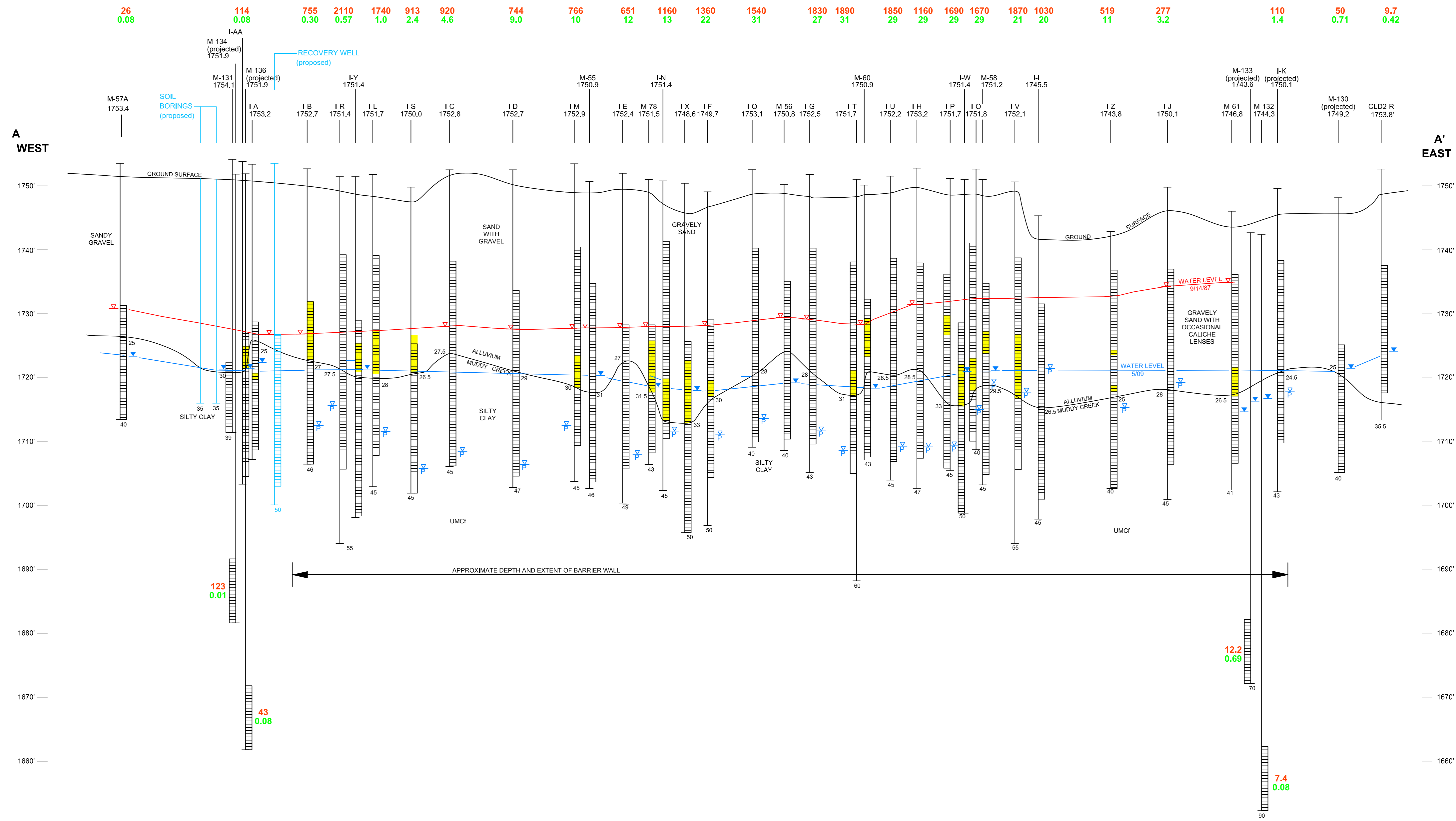
SCALE: 1:12,000 DATE: 8/12/2009 PROJECT NUMBER: 2027

DESIGNED BY:		REVISIONS		
E. Krish	NO.:	DESCRIPTION:	DATE:	BY:
DRAWN BY:				
NGEM				
CHECKED BY:				
NGEM				
APPROVED BY:				
NGEM				

northgate
environmental management, inc.
TRONOX
http://www.ngem.com

SHEET NUMBER: 1
PLATE NUMBER: 2

M:\Projects\2027_Trionox\NGEM\Groundwater_Reports\2009_annual_report\Figures\Plates - GW Cross Sections.dwg Layout: AA Interceptor W/F User: abg Aug 13, 2009 - 9:17am



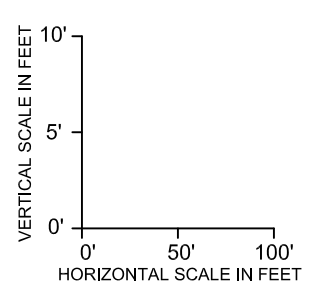
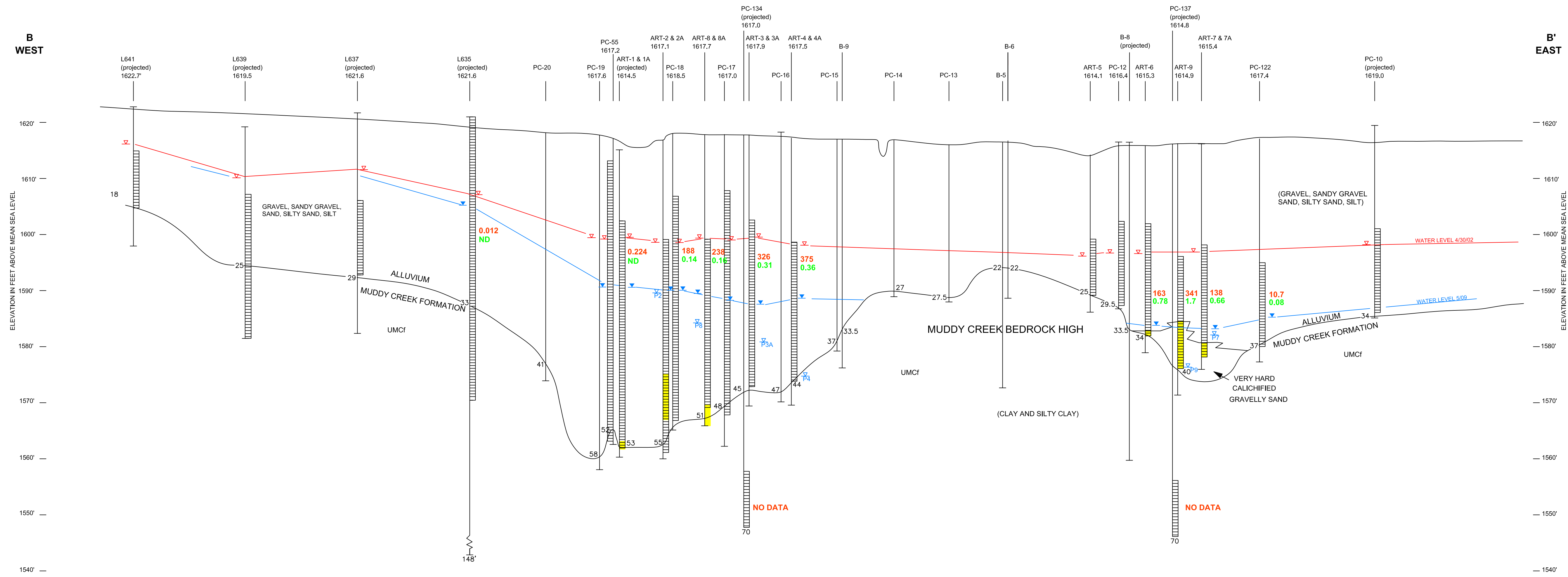
LEGEND

TOP OF CASING ELEVATION	PROPOSED SOIL BORING OR RECOVERY WELL	STATIC WATER LEVEL PRIOR TO INITIAL PUMPING	PERCHLORATE CONCENTRATION AS OF MAY 2009 (mg/L) ND <0.004 mg/L
SCREENED INTERVAL (D) DEEP (M) MIDDLE (S) SHALLOW	CALICHIFIED ZONE	GROUNDWATER LEVELS MEASURED MAY 2009	TOTAL CHROMIUM CONCENTRATION AS OF MAY 2009 (mg/L) ND <0.01 mg/L
BLANK CASING	ALLUVIUM-MUDDY CREEK FM CONTACT (FT BGS)	PUMPING WELL (AND WELL NAME - ATHENS ROAD WELLFIELD ONLY) MAY 2009	
ALLUVIUM-MUDDY CREEK FM CONTACT (FT BGS)	UMCi - UPPER MUDDY CREEK FORMATION		
TOTAL DEPTH (FT BGS)			

DESIGNED BY:	E. Krish
DRAWN BY:	M. Scop
CHECKED BY:	E. Krish
APPROVED BY:	M. Fleck
NO.:	
REVISIONS:	
DESCRIPTION:	
DATE:	
BY:	

WEST - EAST HYDROGEOLOGIC CROSS SECTION A-A' INTERCEPTOR WELL FIELD MAY 2009
Annual Performance Report
Trionox Facility, Henderson, Nevada
DATE: 06/03/09
PROJECT NUMBER: 2027.02
SCALE: as noted

M:\Projects\2027_Tronox\NGEM\Groundwater_Reports\2009_annual_report\Figures\Plates - GW Cross Sections.dwg Layout: BB Athens Rd w/ User: dkg Aug 13, 2009 - 9:18am



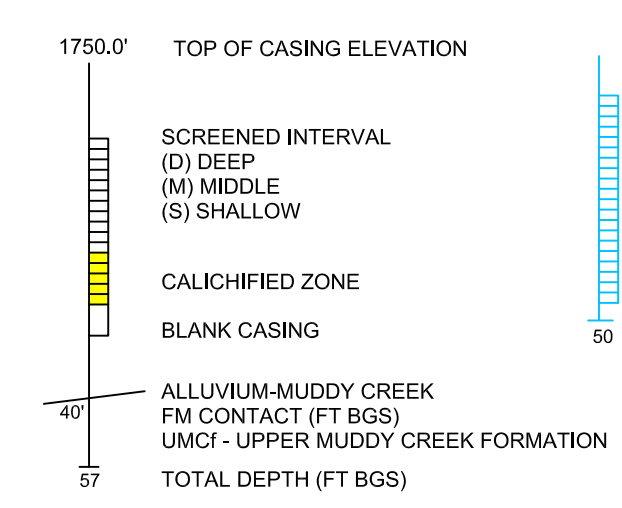
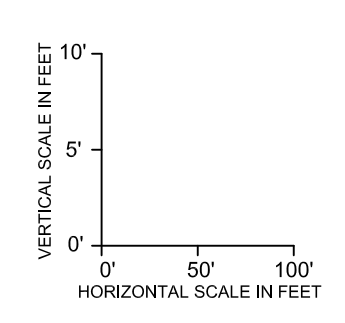
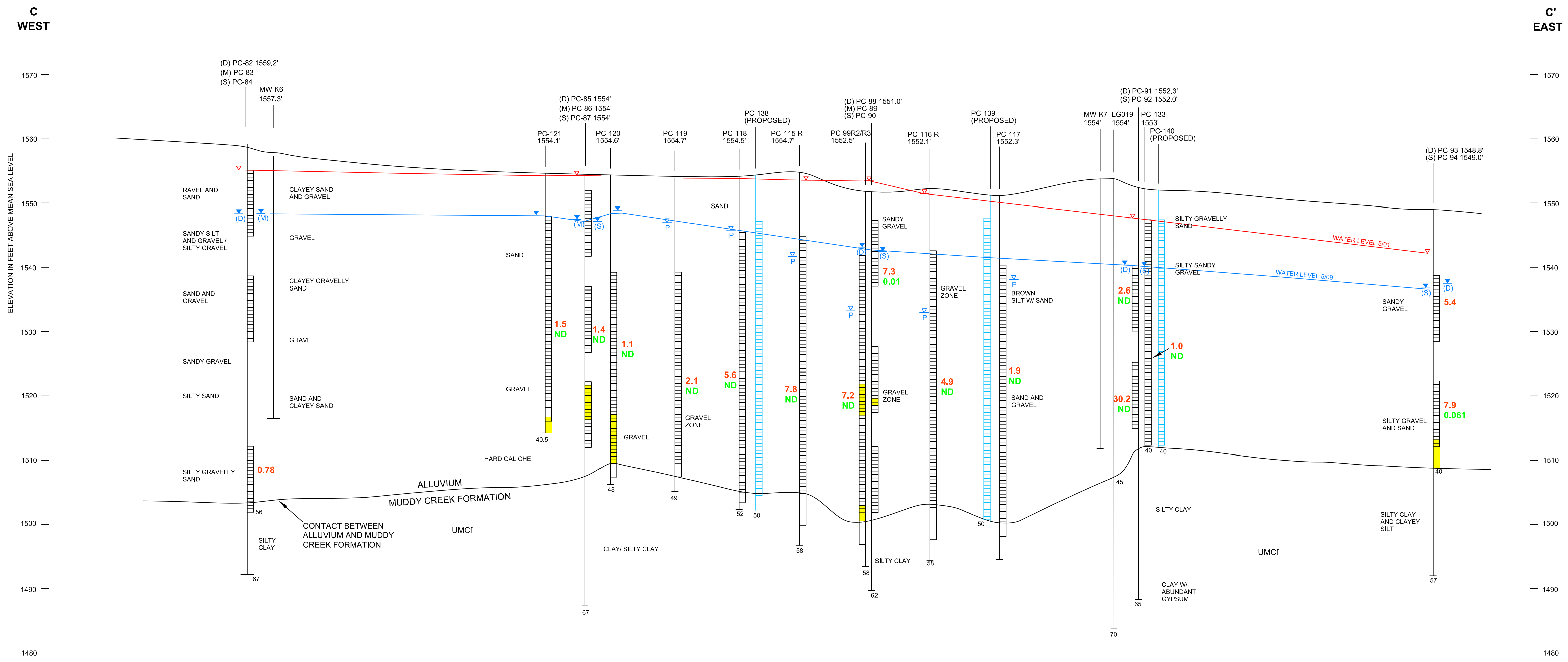
LEGEND

- 1750.0' TOP OF CASING ELEVATION
- SCREENED INTERVAL (D) DEEP (M) MIDDLE (S) SHALLOW
- CALICHIFIED ZONE
- BLANK CASING
- 40' ALLUVIUM-MUDDY CREEK FM CONTACT (FT BGS)
- 57' UMCf - UPPER MUDDY CREEK FORMATION TOTAL DEPTH (FT BGS)
- ▽ STATIC WATER LEVEL PRIOR TO INITIAL PUMPING
- ▼ GROUNDWATER LEVELS MEASURED MAY 2009
- P ATHENS ROAD WELLFIELD ONLY MAY 2009
- 1.9 PERCHLORATE CONCENTRATION AS OF MAY 2009 (mg/L) ND <0.004 mg/L
- 1.9 TOTAL CHROMIUM CONCENTRATION AS OF MAY 2009 (mg/L) ND <0.01 mg/L

DESIGNED BY:	E. Krish
DRAWN BY:	M. Scop
CHECKED BY:	E. Krish
APPROVED BY:	M. Fleck
NO.:	
REVISIONS:	
DESCRIPTION:	
DATE:	
BY:	

WEST - EAST HYDROGEOLOGIC CROSS SECTION B-B' ATHENS ROAD WELL FIELD MAY 2009	
Annual Performance Report Tronox Facility, Henderson, Nevada	
SCALE:	as noted
DATE:	06/03/09
PROJECT NUMBER:	2027.02

M:\Projects\2027_Trionox\GEM\Groundwater_Reports\2009_annual_report\Figures\Plate5 - GW Cross Sections.dwg Layout: CC seep-wf User: dlag Aug 13, 2009 - 9:20am



LEGEND

- 1750.0' TOP OF CASING ELEVATION
- SCREENED INTERVAL (D) DEEP (M) MIDDLE (S) SHALLOW
- CALICHIFIED ZONE
- BLANK CASING
- ALLUVIUM-MUDDY CREEK FM CONTACT (FT BGS)
- UMC1 - UPPER MUDDY CREEK FORMATION
- TOTAL DEPTH (FT BGS)
- CAPTURE WORK PLAN (AUGUST 2007) PROPOSED MONITORING WELL
- STATIC WATER LEVEL PRIOR TO INITIAL PUMPING
- GROUNDWATER LEVELS MEASURED MAY 2009
- PUMPING WELL (AND WELL NAME- ATHENS ROAD WELLFIELD ONLY) MAY 2009
- 1.9 PERCHLORATE CONCENTRATION AS OF MAY 2009 (mg/L) ND <0.004 mg/L
- 1.9 TOTAL CHROMIUM CONCENTRATION AS OF MAY 2009 (mg/L) ND <0.01 mg/L

NO.	REVISIONS DESCRIPTION	DATE	BY:

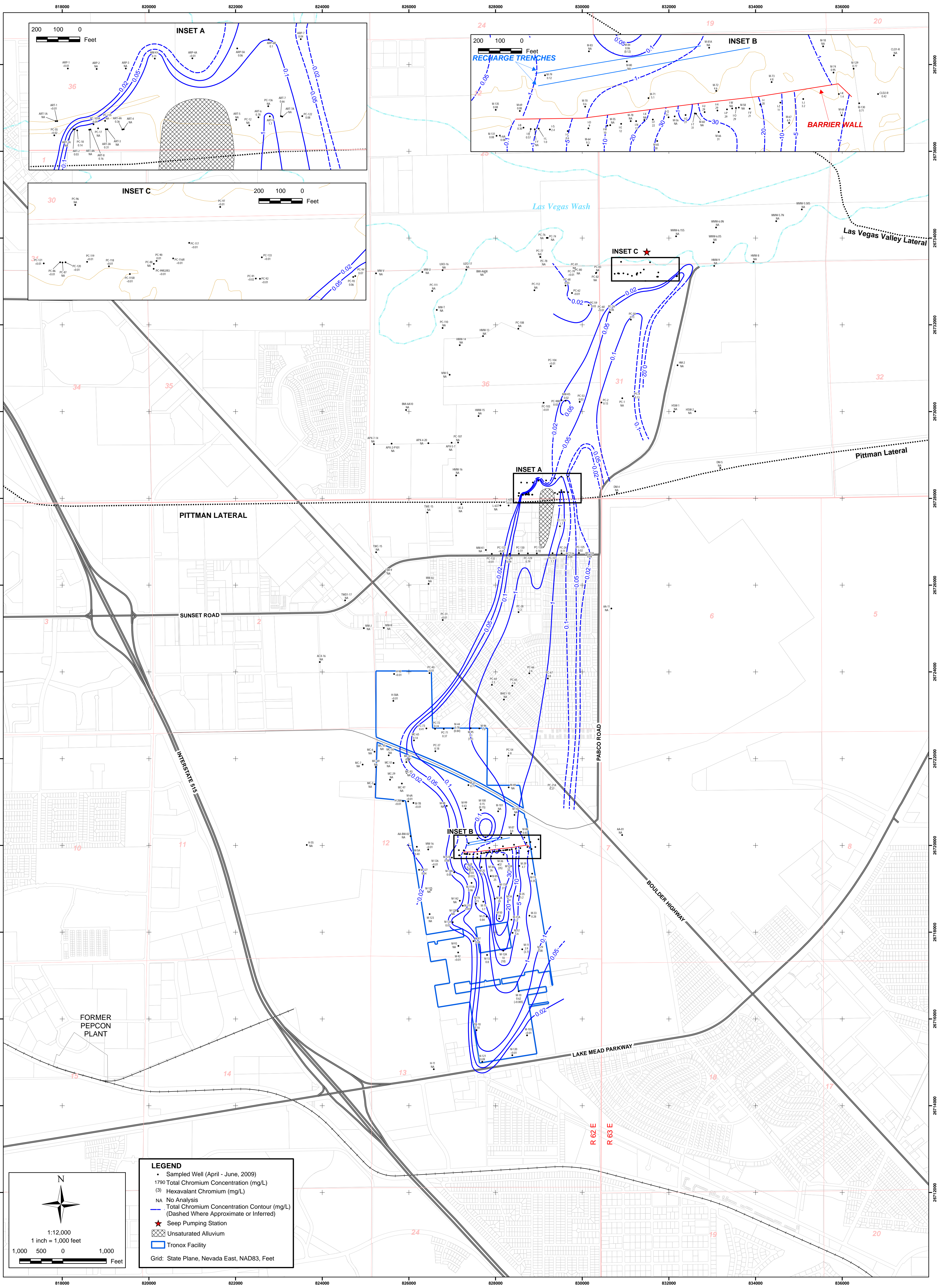
DESIGNED BY: E. Krish	DRAWN BY: M. Scop	CHECKED BY: E. Krish	APPROVED BY: M. Fleck
--------------------------	----------------------	-------------------------	--------------------------

WEST - EAST HYDROGEOLOGIC CROSS SECTION C-C' SEEP WELL FIELD MAY 2009
 Annual Performance Report
 Trionox Facility, Henderson, Nevada

SCALE: as noted
 DATE: 06/03/09
 PROJECT NUMBER: 2027.02

PLATE NUMBER:
5

SHEET NUMBER:
 X



LEGEND

- Sampled Well (April - June, 2009)
- 1790 Total Chromium Concentration (mg/L)
- (3) Hexavalent Chromium (mg/L)
- NA No Analysis
- Total Chromium Concentration Contour (mg/L)
(Dashed Where Approximate or Inferred)
- ★ Seep Pumping Station
- ▨ Unsaturated Alluvium
- ▭ Tronox Facility
- Grid: State Plane, Nevada East, NAD83, Feet

1:12,000
1 inch = 1,000 feet
1,000 500 0 1,000 Feet

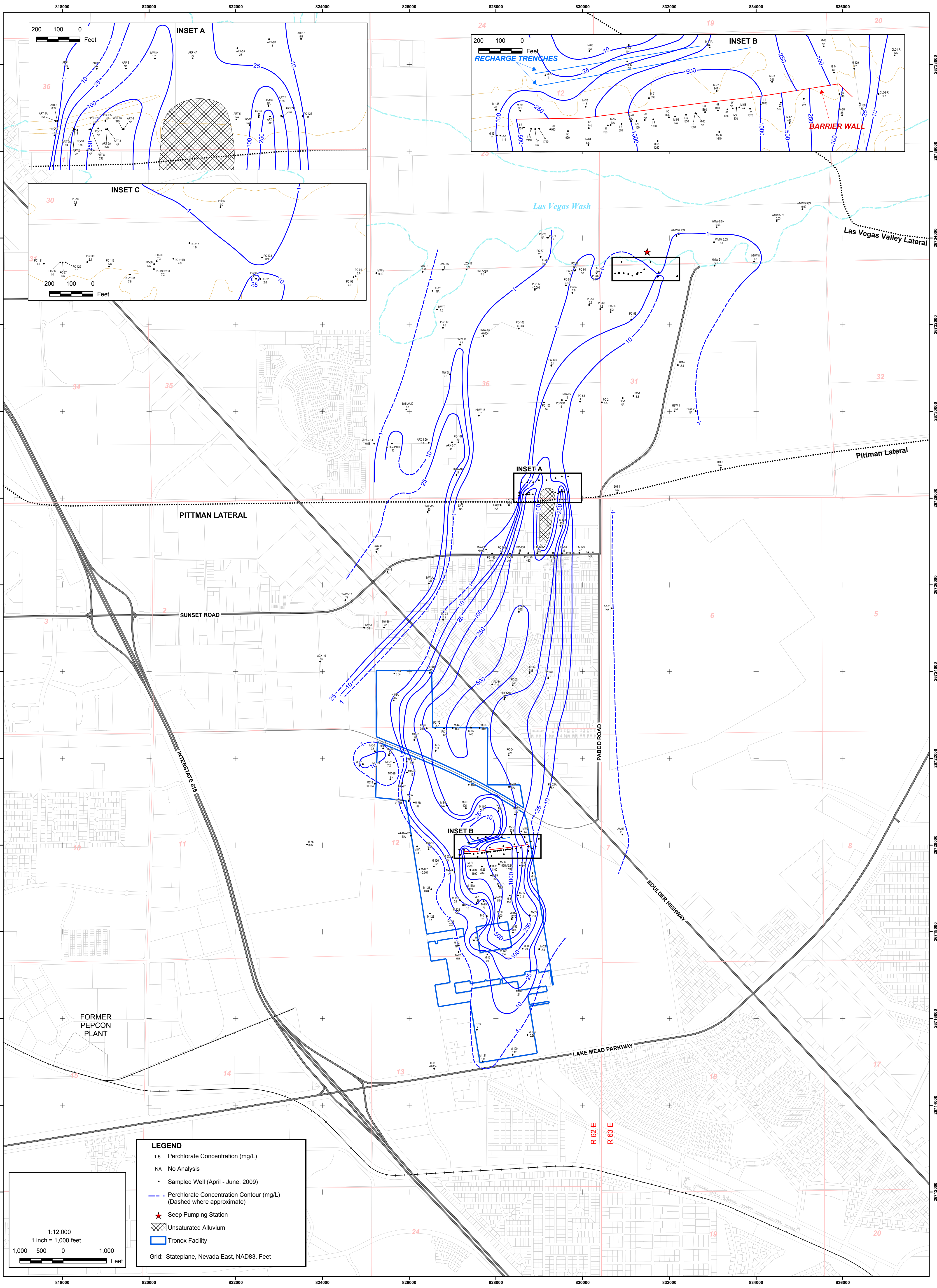
**GROUNDWATER TOTAL CHROMIUM MAP
SHALLOW WATER-BEARING ZONE
SECOND QUARTER 2009**
Annual Performance Report
Tronox Facility
Henderson, Nevada

SCALE: 1:12,000 DATE: 8/12/2009 PROJECT NUMBER: 2027

DESIGNED BY:		REVISIONS	
E. Krish	NO.:	DESCRIPTION:	DATE:
DRAWN BY:			BY:
NGEM			
CHECKED BY:			
NGEM			
APPROVED BY:			
NGEM			

northgate
environmental management, inc.
TRONOX
http://www.ngem.com

SHEET NUMBER: 1
PLATE NUMBER: 6



LEGEND

- 1.5 Perchlorate Concentration (mg/L)
- NA No Analysis
- Sampled Well (April - June, 2009)
- Perchlorate Concentration Contour (mg/L)
(Dashed where approximate)
- ★ Seep Pumping Station
- ▨ Unsaturated Alluvium
- ▭ Tronox Facility
- Grid: Stateplane, Nevada East, NAD83, Feet

1:12,000
1 inch = 1,000 feet
1,000 500 0 1,000
Feet

**GROUNDWATER PERCHLORATE MAP
SHALLOW WATER-BEARING ZONE
SECOND QUARTER 2009**
Annual Performance Report
Tronox Facility
Henderson, Nevada

SCALE: 1:12,000 DATE: 8/12/2009 PROJECT NUMBER: 2027

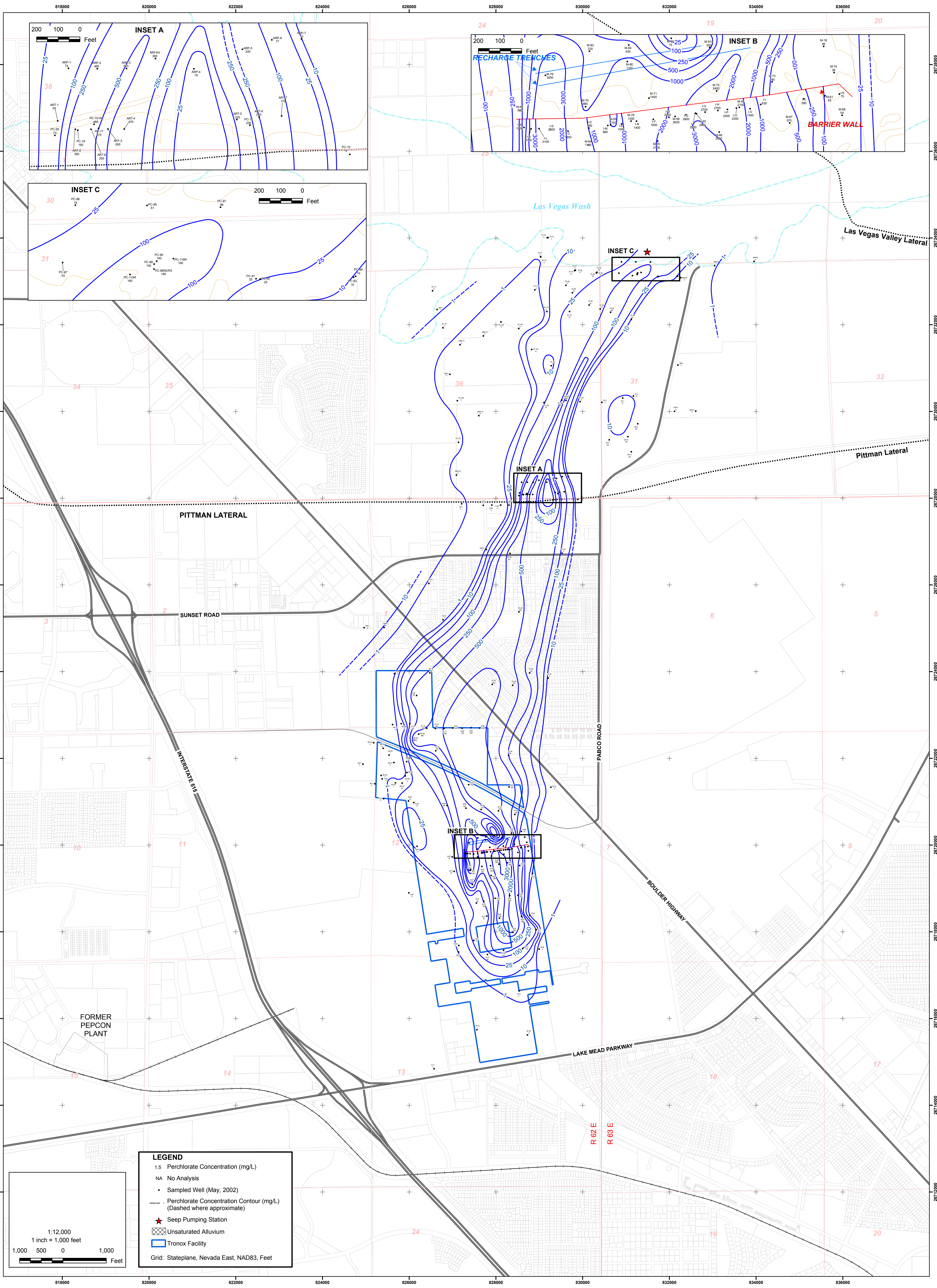
DESIGNED BY:	REVISIONS			
E. Krish	NO.:	DESCRIPTION:	DATE:	BY:
DRAWN BY:				
NGEM				
CHECKED BY:				
NGEM				
APPROVED BY:				
NGEM				

northgate
environmental management, inc.

TRONOX

http://www.ngem.com

SHEET NUMBER: 1
PLATE NUMBER: 7



SHEET NUMBER:
1

PLATE NUMBER:
7a

**GROUNDWATER PERCHLORATE MAP
SHALLOW WATER-BEARING ZONE
SECOND QUARTER 2002**
Annual Performance Report
Tronox Facility
Henderson, Nevada

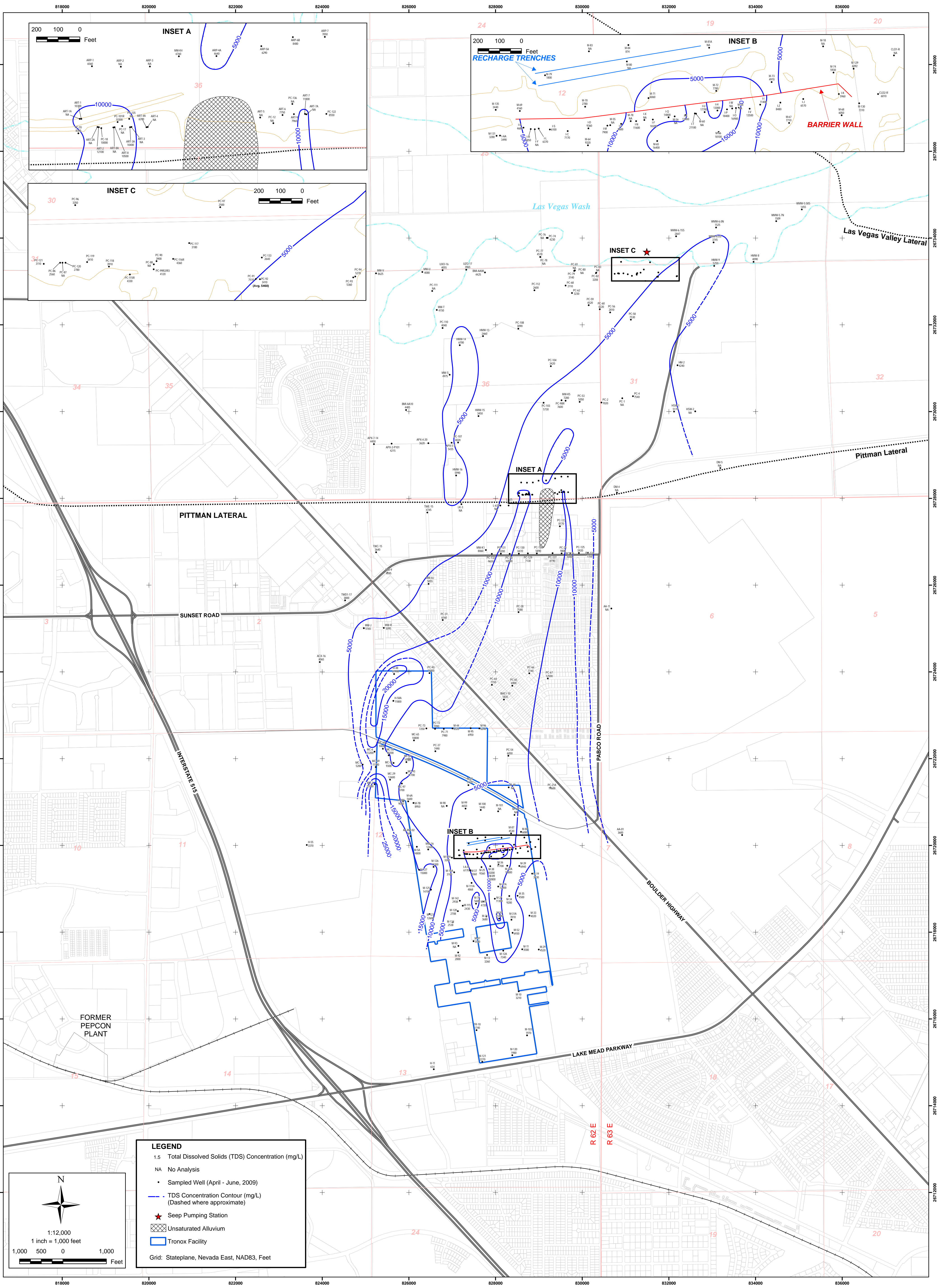
SCALE: 1:12,000 DATE: 8/12/2009 PROJECT NUMBER: 2027

DESIGNED BY:	REVISIONS		
E. Krish	NO.:	DESCRIPTION:	DATE: BY:
DRAWN BY:			
NGEM			
CHECKED BY:			
NGEM			
APPROVED BY:			
NGEM			

northgate
environmental management, inc.

TRONOX

<http://www.ngem.com>



LEGEND

- 1.5 Total Dissolved Solids (TDS) Concentration (mg/L)
- NA No Analysis
- Sampled Well (April - June, 2009)
- TDS Concentration Contour (mg/L)
(Dashed where approximate)
- ★ Seep Pumping Station
- ▨ Unsaturated Alluvium
- ▭ Tronox Facility

Grid: Stateplane, Nevada East, NAD83, Feet

North Arrow

1:12,000
1 inch = 1,000 feet

1,000 500 0 1,000 Feet

SHEET NUMBER:
1

PLATE NUMBER:
8

**GROUNDWATER TOTAL DISSOLVED SOLIDS MAP
SHALLOW WATER-BEARING ZONE
SECOND QUARTER 2009**
Annual Performance Report
Tronox Facility
Henderson, Nevada

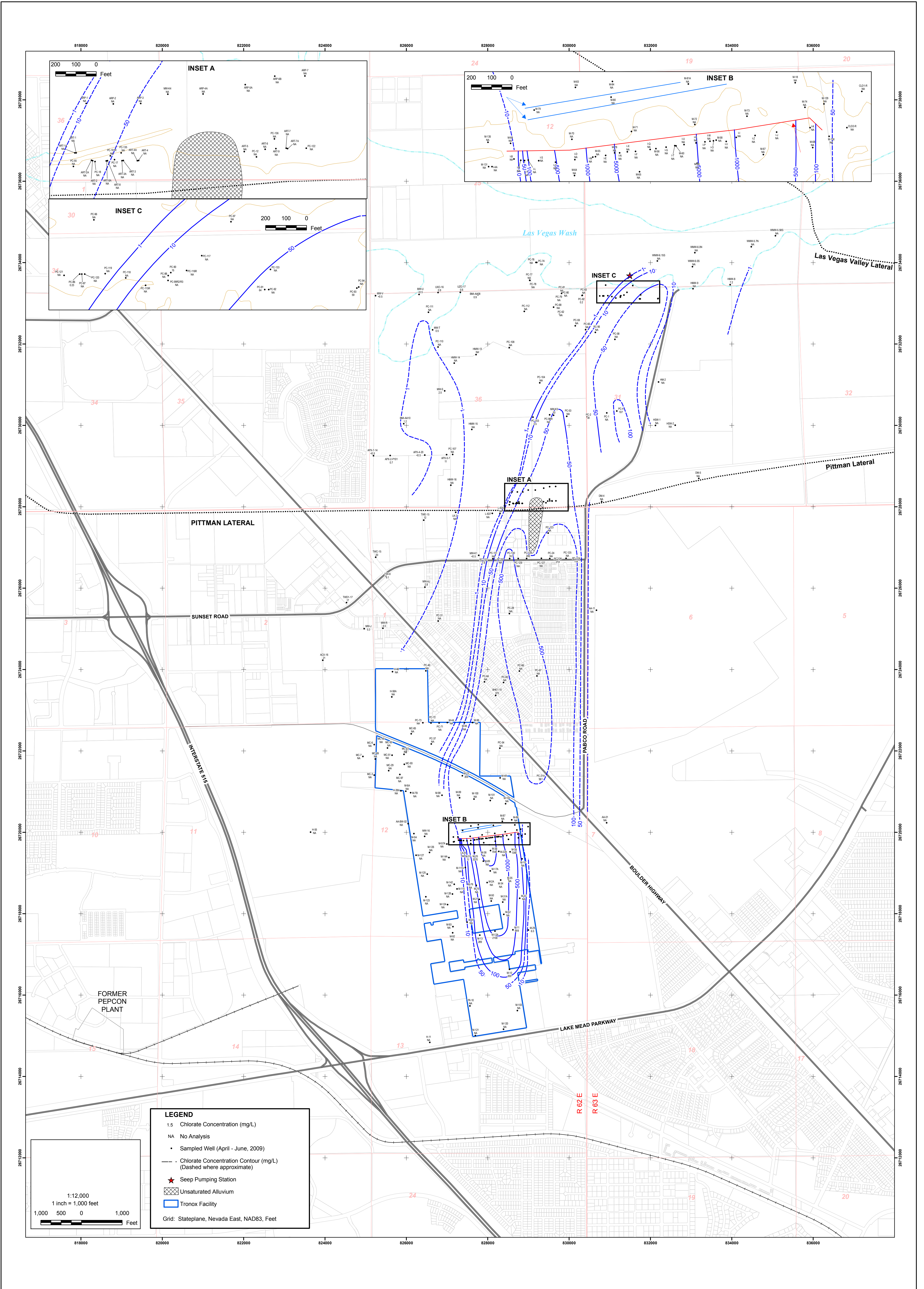
SCALE: 1:12,000 DATE: 8/12/2009 PROJECT NUMBER: 2027

DESIGNED BY:		REVISIONS	
E. Krish	NO.:	DESCRIPTION:	DATE:
DRAWN BY:			BY:
NGEM			
CHECKED BY:			
NGEM			
APPROVED BY:			
NGEM			

northgate
environmental management, inc.

TRONOX

http://www.ngem.com

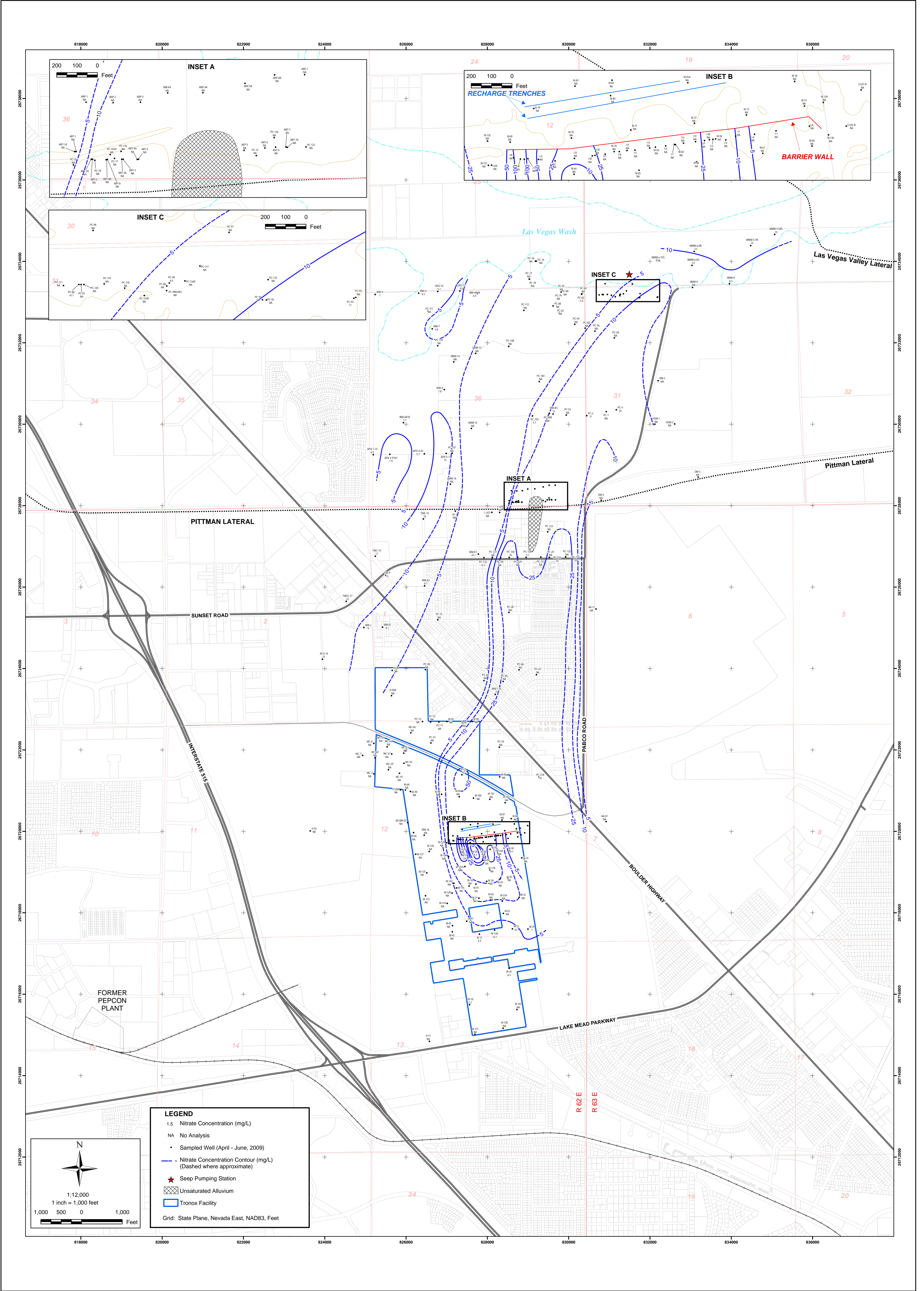


SHEET NUMBER: 1	PLATE NUMBER: 9	GROUNDWATER CHLORATE MAP SHALLOW WATER-BEARING ZONE SECOND QUARTER 2009			DESIGNED BY: E. Krish		REVISIONS	
		Annual Performance Report Tronox Facility Henderson, Nevada			NO.:	DESCRIPTION:	DATE:	BY:
		SCALE: 1:12,000	DATE: 8/12/2009	PROJECT NUMBER: 2027	DRAWN BY: NGEM			
				CHECKED BY: NGEM				
				APPROVED BY: NGEM				

northgate
environmental management, inc.

TRONOX

http://www.ngem.com



SHEET NUMBER: 10	PLATE NUMBER: 10	GROUNDWATER NITRATE MAP SHALLOW WATER-BEARING ZONE SECOND QUARTER 2009 Annual Performance Report Tronox Facility Henderson, Nevada			DESIGNED BY:	REVISIONS		
		SCALE:	DATE:	PROJECT NUMBER:	E. Krish	NO.:	DESCRIPTION:	DATE:
1:12,000	8/12/2009	2027	NGEM	NGEM	NGEM	NGEM	NGEM	NGEM

northgate
environmental management, inc.
TRONOX
<http://www.ngem.com>