

| ELEVATION, ft | DEPTH, ft | MATERIAL SYMBOL | SAMPLES | BLOWS/FT | SAMPLE NO. | LOCATION: Former diesel fuel storage tank area   | PID READING (PPMV) |
|---------------|-----------|-----------------|---------|----------|------------|--|--------------------|
|               |           |                 |         |          |            | SURFACE EL: Not Surveyed   |                    |
|               |           |                 |         |          |            | MATERIAL DESCRIPTIONS  |                    |
| 1             |           |                 |         |          |            |  |                    |
| 2             |           |                 |         |          |            |  |                    |
| 3             |           |                 |         |          |            |  |                    |
| 4             |           |                 |         |          |            |  |                    |
| 5             |           |                 |         | 34       | SB5-4-5.0  | Silty SAND (SM): Poorly graded, fine grained sand, medium dense, non consolidated, dry, trace angular gravel, light orangish brown, no odors or staining |                    |
| 6             |           |                 |         |          |            |  |                    |
| 7             |           |                 |         |          |            |  |                    |
| 8             |           |                 |         |          |            |  |                    |
| 9             |           |                 |         |          |            |  |                    |
| 10            |           |                 |         | 65       | SB5-4-10.0 |  |                    |
| 11            |           |                 |         |          |            |  |                    |
| 12            |           |                 |         |          |            |  |                    |
| 13            |           |                 |         |          |            |  |                    |
| 14            |           |                 |         |          |            |  |                    |
| 15            |           |                 |         | 80       | SB5-4-15.5 | occasional fine-grained sub-angular gravel   |                    |
| 16            |           |                 |         |          |            |  |                    |
| 17            |           |                 |         |          |            |  |                    |
| 18            |           |                 |         |          |            |  |                    |
| 19            |           |                 |         |          |            |  |                    |
| 20            |           |                 |         | 126      | SB5-4-20.0 |  |                    |
| 21            |           |                 |         | 5"       |            |  |                    |
| 22            |           |                 |         |          |            |  |                    |
| 23            |           |                 |         |          |            |  |                    |
| 24            |           |                 |         |          |            |  |                    |
| 25            |           |                 |         | 90       | SB5-4-25.0 | Sandy Gravel (GP): Orangish red matrix, very dense, dark gray fine grained sub-angular gravel  |                    |
| 26            |           |                 |         |          |            |  |                    |
| 27            |           |                 |         |          |            |  |                    |
| 28            |           |                 |         |          |            |  |                    |
| 29            |           |                 |         |          |            |  |                    |
| 30            |           |                 |         |          |            |  |                    |
| 31            |           |                 |         | 75       | SB5-4-30.0 | Silty SAND (SM): Orangish brown, trace angular igneous inclusions, damp, no unusual odors or stains noted  |                    |
| 32            |           |                 |         |          |            |  |                    |
| 33            |           |                 |         |          |            |  |                    |

COMPLETION DEPTH: 41.5 Ft.

DEPTH TO WATER

First Encountered (▽): None

At End of Drilling (▽): None

BACKFILLED WITH: Bentonite Chips

DRILLING DATE: March 29, 1999

DRILLING METHOD: Hollow Stem

DRILLED BY: Gregg Drilling

LOGGED BY: DJ. Poehls

CHECKED BY: D. Gerry

The log and data presented are a simplification of actual condition encountered at the time of probing at the probed locations. Subsurface conditions may differ at other locations and with the passage of time.

**LOG OF SOIL BORING SB5-4**  
**Kerr-McGee Chemical LLC**  
**Henderson, Nevada Facility**

| ELEVATION, ft | DEPTH, ft | MATERIAL SYMBOL | SAMPLES | BLOWS/FT | SAMPLE NO. | LOCATION: Former diesel fuel storage tank area  | PID READING (PPMV) |
|---------------|-----------|-----------------|---------|----------|------------|---|--------------------|
|               |           |                 |         |          |            | SURFACE EL: Not Surveyed  |                    |
|               |           |                 |         |          |            | MATERIAL DESCRIPTIONS   |                    |
| 35            |           |                 |         | 100      | SB5-4-35.0 | Silty SAND (SM): Orangish brown, trace angular igneous inclusions, damp, no unusual odors or stains noted |                    |
| 36            |           |                 |         | 1/6"     |            |   |                    |
| 37            |           |                 |         |          |            |   |                    |
| 38            |           |                 |         |          |            |   |                    |
| 39            |           |                 |         |          |            | Clayey SILT (ML): Stiff, medium orange, top of muddy creek, moist to wet                                  |                    |
| 40            |           |                 |         | 43       | SB5-4-40.0 |   |                    |
| 41            |           |                 |         |          |            |   |                    |
| 42            |           |                 |         |          |            |   |                    |
| 43            |           |                 |         |          |            |   |                    |
| 44            |           |                 |         |          |            | Boring terminated at the capillary fringe   |                    |
| 45            |           |                 |         |          |            |   |                    |
| 46            |           |                 |         |          |            |   |                    |
| 47            |           |                 |         |          |            |   |                    |
| 48            |           |                 |         |          |            |   |                    |
| 49            |           |                 |         |          |            |   |                    |
| 50            |           |                 |         |          |            |   |                    |
| 51            |           |                 |         |          |            |   |                    |
| 52            |           |                 |         |          |            |   |                    |
| 53            |           |                 |         |          |            |   |                    |
| 54            |           |                 |         |          |            |   |                    |
| 55            |           |                 |         |          |            |   |                    |
| 56            |           |                 |         |          |            |   |                    |
| 57            |           |                 |         |          |            |   |                    |
| 58            |           |                 |         |          |            |   |                    |
| 59            |           |                 |         |          |            |   |                    |
| 60            |           |                 |         |          |            |   |                    |
| 61            |           |                 |         |          |            |   |                    |
| 62            |           |                 |         |          |            |   |                    |
| 63            |           |                 |         |          |            |   |                    |
| 64            |           |                 |         |          |            |   |                    |
| 65            |           |                 |         |          |            |   |                    |
| 66            |           |                 |         |          |            |   |                    |
| 67            |           |                 |         |          |            |   |                    |

COMPLETION DEPTH: 41.5 Ft.

DEPTH TO WATER

First Encountered (☒): None

At End of Drilling (☒): None

BACKFILLED WITH: Bentonite Chips

DRILLING DATE: March 29, 1999

DRILLING METHOD: Hollow Stem

DRILLED BY: Gregg Drilling

LOGGED BY: DJ. Poehls

CHECKED BY: D. Gerry

The log and data presented are a simplification of actual condition encountered at the time of probing at the probed locations. Subsurface conditions may differ at other locations and with the passage of time.

**LOG OF SOIL BORING SB5-4  
 Kerr-McGee Chemical LLC  
 Henderson, Nevada Facility**

| ELEVATION, ft | DEPTH, ft | MATERIAL SYMBOL | SAMPLES | BLOWS/FT | SAMPLE NO. | LOCATION: Former diesel fuel storage tank area  | PID READING (PPMV) |
|---------------|-----------|-----------------|---------|----------|------------|---|--------------------|
|               |           |                 |         |          |            | MATERIAL DESCRIPTIONS   |                    |
| 1             |           |                 |         |          |            |   |                    |
| 2             |           |                 |         |          |            |   |                    |
| 3             |           |                 |         |          |            |   |                    |
| 4             |           |                 |         |          |            |   |                    |
| 5             |           |                 |         |          |            |   |                    |
| 6             |           |                 | 43      |          | SB5-5-5.0  | Silty SAND (SM): Poorly graded fine grained sand, dense, dry, trace sub-angular fine grained gravel, medium orange brown, no odors or staining noted          |                    |
| 7             |           |                 |         |          |            |   |                    |
| 8             |           |                 |         |          |            |   |                    |
| 9             |           |                 |         |          |            |   |                    |
| 10            |           |                 | 27      |          | SB5-5-10.0 |   |                    |
| 11            |           |                 | 50/4    |          |            |   |                    |
| 12            |           |                 |         |          |            |   |                    |
| 13            |           |                 |         |          |            |   |                    |
| 14            |           |                 |         |          |            |   |                    |
| 15            |           |                 | 100     |          | SB5-5-15.0 | trace medium inclusions, subrounded   |                    |
| 16            |           |                 | 76      |          |            |   |                    |
| 17            |           |                 |         |          |            |   |                    |
| 18            |           |                 |         |          |            |   |                    |
| 19            |           |                 |         |          |            |   |                    |
| 20            |           |                 | 47      |          | SB5-5-20.0 |   |                    |
| 21            |           |                 | 50/8    |          |            |   |                    |
| 22            |           |                 |         |          |            |   |                    |
| 23            |           |                 |         |          |            |   |                    |
| 24            |           |                 |         |          |            |   |                    |
| 25            |           |                 | 68      |          | SB5-5-25.0 | Sandy Gravel (GP): Dense, medium orange brown, poorly graded fine grained sand, very fine to medium grained sub-angular gravel, dry, no stains or odors noted |                    |
| 26            |           |                 |         |          |            |   |                    |
| 27            |           |                 |         |          |            |   |                    |
| 28            |           |                 |         |          |            |   |                    |
| 29            |           |                 |         |          |            |   |                    |
| 30            |           |                 |         |          |            |   |                    |
| 31            |           |                 | 115     |          | SB5-5-30.0 | Sandy SILT (ML): Very stiff, medium orangish brown, non-plastic, dry, no unusual odors or stains noted  |                    |
| 32            |           |                 |         |          |            |   |                    |
| 33            |           |                 |         |          |            |   |                    |

COMPLETION DEPTH: 41.5 Ft.

DEPTH TO WATER

First Encountered (☒): 41.5 Ft.

At End of Drilling (☒): None

BACKFILLED WITH: Bentonite Chips

DRILLING DATE: March 29, 1999

DRILLING METHOD: Hollow Stem

DRILLED BY: Gregg Drilling

LOGGED BY: DJ. Poehls

CHECKED BY: D. Gerry

The log and data presented are a simplification of actual condition encountered at the time of probing at the probed locations. Subsurface conditions may differ at other locations and with the passage of time.

**LOG OF SOIL BORING SB5-5**  
**Kerr-McGee Chemical LLC**  
**Henderson, Nevada Facility**

| ELEVATION, ft | DEPTH, ft | MATERIAL SYMBOL          | SAMPLES | BLOWS/FT | SAMPLE NO. | LOCATION: Former diesel fuel storage tank area<br>SURFACE EL: Not Surveyed<br>MATERIAL DESCRIPTIONS                         | PID READING (PPMV) |  |
|---------------|-----------|--------------------------|---------|----------|------------|---|--------------------|--|
| 35            |           | [Symbol: Dotted pattern] | 59      |          | SB5-5-35.0 | Silty SAND (SM): Very fine lenses or stringers of caliche (hydrochloric acid reactive)                                      |                    |  |
| 36            |           |                          |         |          |            |   |                    |  |
| 37            |           |                          |         |          |            |   |                    |  |
| 38            |           |                          |         |          |            |   |                    |  |
| 39            |           |                          |         |          |            |   |                    |  |
| 40            |           |                          | 44      |          | SB5-5-40.0 | with saturated coarse sand, strong hydrocarbon odor   |                    |  |
| 41            |           |                          |         |          |            |   |                    |  |
| 42            |           |                          |         |          |            | Boring advancement terminated at top of water table. Temporary monitoring well set for the collection of groundwater sample |                    |  |
| 43            |           |                          |         |          |            |   |                    |  |
| 44            |           |                          |         |          |            |   |                    |  |
| 45            |           |                          |         |          |            |   |                    |  |
| 46            |           |                          |         |          |            |   |                    |  |
| 47            |           |                          |         |          |            |   |                    |  |
| 48            |           |                          |         |          |            |   |                    |  |
| 49            |           |                          |         |          |            |   |                    |  |
| 50            |           |                          |         |          |            |   |                    |  |
| 51            |           |                          |         |          |            |   |                    |  |
| 52            |           |                          |         |          |            |   |                    |  |
| 53            |           |                          |         |          |            |   |                    |  |
| 54            |           |                          |         |          |            |   |                    |  |
| 55            |           |                          |         |          |            |   |                    |  |
| 56            |           |                          |         |          |            |   |                    |  |
| 57            |           |                          |         |          |            |   |                    |  |
| 58            |           |                          |         |          |            |   |                    |  |
| 59            |           |                          |         |          |            |   |                    |  |
| 60            |           |                          |         |          |            |   |                    |  |
| 61            |           |                          |         |          |            |   |                    |  |
| 62            |           |                          |         |          |            |   |                    |  |
| 63            |           |                          |         |          |            |   |                    |  |
| 64            |           |                          |         |          |            |   |                    |  |
| 65            |           |                          |         |          |            |   |                    |  |
| 66            |           |                          |         |          |            |   |                    |  |
| 67            |           |                          |         |          |            |   |                    |  |

COMPLETION DEPTH: 41.5 ft.  
 DEPTH TO WATER  
 First Encountered (☒): 41.5 ft.  
 At End of Drilling (☒): None  
 BACKFILLED WITH: Bentonite Chips  
 DRILLING DATE: March 29, 1999

DRILLING METHOD: Hollow Stem  
 DRILLED BY: Gregg Drilling  
 LOGGED BY: DJ. Poehls  
 CHECKED BY: D. Gerry

The log and data presented are a simplification of actual condition encountered at the time of probing at the probed locations. Subsurface conditions may differ at other locations and with the passage of time.

**LOG OF SOIL BORING SB5-5  
 Kerr-McGee Chemical LLC  
 Henderson, Nevada Facility**

G:\DWG\4020\004\SB5-5A

| ELEVATION, ft | DEPTH, ft | MATERIAL SYMBOL | SAMPLES | BLOWS/FT | SAMPLE NO.     | LOCATION: Former diesel fuel storage tank Area   | PID READING (PPMV) |
|---------------|-----------|-----------------|---------|----------|----------------|--|--------------------|
|               |           |                 |         |          |                | SURFACE EL: Not Surveyed   |                    |
|               |           |                 |         |          |                | MATERIAL DESCRIPTIONS  |                    |
| 1             |           |                 |         |          |                |  |                    |
| 2             |           |                 |         |          |                |  |                    |
| 3             |           |                 |         |          |                |  |                    |
| 4             |           |                 |         |          |                |  |                    |
| 5             |           |                 |         |          |                |  |                    |
| 6             |           |                 |         |          | 34 SB5-6-5.0   | Sandy SILT (ML): Very fine grained sand, dense, dry, trace very fine grained gravel, orangish brown, no odors or staining  |                    |
| 7             |           |                 |         |          |                |  |                    |
| 8             |           |                 |         |          |                |  |                    |
| 9             |           |                 |         |          |                |  |                    |
| 10            |           |                 |         |          |                |  |                    |
| 11            |           |                 |         |          | 43 SB5-6-10.0  | Silty SAND (SM): Trace gravel, poorly graded fine grained sand, very dense, medium orangish brown, no stains or odors noted                                      |                    |
| 12            |           |                 |         |          |                |  |                    |
| 13            |           |                 |         |          |                |  |                    |
| 14            |           |                 |         |          |                |  |                    |
| 15            |           |                 |         |          |                |  |                    |
| 16            |           |                 |         |          | 47 SB5-6-15.0  | increased gravel   |                    |
| 17            |           |                 |         |          |                |  |                    |
| 18            |           |                 |         |          |                |  |                    |
| 19            |           |                 |         |          |                |  |                    |
| 20            |           |                 |         |          |                |  |                    |
| 21            |           |                 |         |          | 63 SB5-6-20.0  | Silty sandy GRAVEL (GM): Very dense, orange brown, very poorly graded fine grained sand, fine grained angular gravel, sub-angular, dry, no odors or stains noted |                    |
| 22            |           |                 |         |          |                |  |                    |
| 23            |           |                 |         |          |                |  |                    |
| 24            |           |                 |         |          |                |  |                    |
| 25            |           |                 |         |          |                |  |                    |
| 26            |           |                 |         |          | 115 SB5-6-25.0 |  |                    |
| 27            |           |                 |         |          |                |  |                    |
| 28            |           |                 |         |          |                |  |                    |
| 29            |           |                 |         |          |                |  |                    |
| 30            |           |                 |         |          |                |  |                    |
| 31            |           |                 |         |          | 108 SB5-6-30.0 | Silty SAND (SM): Very dense, medium orange brown, trace sub-angular fine grained gravel, medium grained sand, dry, no unusual odors or stains noted              |                    |
| 32            |           |                 |         |          |                |  |                    |
| 33            |           |                 |         |          |                |  |                    |

COMPLETION DEPTH: 41.5 ft.  
 DEPTH TO WATER  
 First Encountered (☒): 41.5 ft.  
 At End of Drilling (☒): None  
 BACKFILLED WITH: Bentonite Chips  
 DRILLING DATE: March 29, 1999

DRILLING METHOD: Hollow Stem  
 DRILLED BY: Gregg Drilling  
 LOGGED BY: DJ. Poehls  
 CHECKED BY: D. Gerry

The log and data presented are a simplification of actual condition encountered at the time of probing at the probed locations. Subsurface conditions may differ at other locations and with the passage of time.

**LOG OF SOIL BORING SB5-6  
 Kerr-McGee Chemical LLC  
 Henderson, Nevada Facility**

G:\DWG\4020\004\SB5-6

| ELEVATION, ft | DEPTH, ft | MATERIAL SYMBOL | SAMPLES | BLOWS/FT | SAMPLE NO. | LOCATION: Former diesel fuel storage tank area   | PID READING (PPMV) |
|---------------|-----------|-----------------|---------|----------|------------|--|--------------------|
|               |           |                 |         |          |            | SURFACE EL: Not Surveyed   |                    |
|               |           |                 |         |          |            | MATERIAL DESCRIPTIONS  |                    |
| 35            |           |                 |         | 125      | SB5-6-35.0 | Silty SAND (SM): very dense, light orange brown, poorly graded fine grained sand, trace fine grained sub-angular gravel, dry, no unusual odors or stains noted |                    |
| 36            |           |                 |         | 6"       |            |  |                    |
| 37            |           |                 |         |          |            |  |                    |
| 38            |           |                 |         |          |            |  |                    |
| 39            |           |                 |         |          |            |  |                    |
| 40            |           |                 |         | 39       | SB5-6-40.0 | SILT (ML): Medium orange brown, no gravel, moist to wet, no stains or odors  |                    |
| 41            |           |                 |         |          |            |  |                    |
| 42            |           |                 |         |          |            |  |                    |
| 43            |           |                 |         |          |            |  |                    |
| 44            |           |                 |         |          |            | Boring terminated at the capillary fringe  |                    |
| 45            |           |                 |         |          |            |  |                    |
| 46            |           |                 |         |          |            |  |                    |
| 47            |           |                 |         |          |            |  |                    |
| 48            |           |                 |         |          |            |  |                    |
| 49            |           |                 |         |          |            |  |                    |
| 50            |           |                 |         |          |            |  |                    |
| 51            |           |                 |         |          |            |  |                    |
| 52            |           |                 |         |          |            |  |                    |
| 53            |           |                 |         |          |            |  |                    |
| 54            |           |                 |         |          |            |  |                    |
| 55            |           |                 |         |          |            |  |                    |
| 56            |           |                 |         |          |            |  |                    |
| 57            |           |                 |         |          |            |  |                    |
| 58            |           |                 |         |          |            |  |                    |
| 59            |           |                 |         |          |            |  |                    |
| 60            |           |                 |         |          |            |  |                    |
| 61            |           |                 |         |          |            |  |                    |
| 62            |           |                 |         |          |            |  |                    |
| 63            |           |                 |         |          |            |  |                    |
| 64            |           |                 |         |          |            |  |                    |
| 65            |           |                 |         |          |            |  |                    |
| 66            |           |                 |         |          |            |  |                    |
| 67            |           |                 |         |          |            |  |                    |

COMPLETION DEPTH: 41.5 ft.  
 DEPTH TO WATER  
 First Encountered (☒): 41.5 ft.  
 At End of Drilling (☒): None  
 BACKFILLED WITH: Bentonite Chips  
 DRILLING DATE: March 29, 1999

DRILLING METHOD: Hollow Stem  
 DRILLED BY: Gregg Drilling  
 LOGGED BY: DJ. Poehls  
 CHECKED BY: D. Gerry

The log and data presented are a simplification of actual condition encountered at the time of probing at the probed locations. Subsurface conditions may differ at other locations and with the passage of time.

**LOG OF SOIL BORING SB5-6  
 Kerr-McGee Chemical LLC  
 Henderson, Nevada Facility**

| ELEVATION, ft | DEPTH, ft | MATERIAL SYMBOL | SAMPLES | BLOWS/FT | SAMPLE NO. | LOCATION: Former diesel fuel storage tank area   | PID READING (PPMV) |
|---------------|-----------|-----------------|---------|----------|------------|--|--------------------|
|               |           |                 |         |          |            | SURFACE EL: Not Surveyed   |                    |
|               |           |                 |         |          |            | MATERIAL DESCRIPTIONS  |                    |
| 1             |           |                 |         |          |            |  |                    |
| 2             |           |                 |         |          |            |  |                    |
| 3             |           |                 |         |          |            |  |                    |
| 4             |           |                 |         |          |            |  |                    |
| 5             |           |                 | 51      |          | SB5-7-5.0  | Silty SAND (SM): Dense, dry, trace fine grained sub-angular gravel, dark orangish brown, no odors or staining  |                    |
| 6             |           |                 |         |          |            |  |                    |
| 7             |           |                 |         |          |            |  |                    |
| 8             |           |                 |         |          |            |  |                    |
| 9             |           |                 |         |          |            |  |                    |
| 10            |           |                 | 71      |          | SB5-7-10.0 |  |                    |
| 11            |           |                 |         |          |            |  |                    |
| 12            |           |                 |         |          |            |  |                    |
| 13            |           |                 |         |          |            |  |                    |
| 14            |           |                 |         |          |            |  |                    |
| 15            |           |                 | 60      |          | SB5-7-15.0 | Gravelly silty SAND (SM): Dense, orange brown, poorly graded fine grained sand, very fine to fine, sub-angular gravel, dry, no odors or stains         |                    |
| 16            |           |                 |         |          |            |  |                    |
| 17            |           |                 |         |          |            |  |                    |
| 18            |           |                 |         |          |            |  |                    |
| 19            |           |                 |         |          |            |  |                    |
| 20            |           |                 | 89      |          | SB5-7-20.0 | increasing silt  |                    |
| 21            |           |                 |         |          |            |  |                    |
| 22            |           |                 |         |          |            |  |                    |
| 23            |           |                 |         |          |            |  |                    |
| 24            |           |                 |         |          |            |  |                    |
| 25            |           |                 | 58      |          | SB5-7-25.0 | Sandy SILT (ML): Dense, medium orange brown, very fine grained sand, trace very fine grained sub-angular gravel, dry, no unusual odors or stains noted |                    |
| 26            |           |                 |         |          |            |  |                    |
| 27            |           |                 |         |          |            |  |                    |
| 28            |           |                 |         |          |            |  |                    |
| 29            |           |                 |         |          |            |  |                    |
| 30            |           |                 | 51      |          | SB5-7-30.0 | Silty SAND (SM): Dense, medlum brown, very fine grained sand, trace coarse grained sand, no odors or stains noted                                      |                    |
| 31            |           |                 |         |          |            |  |                    |
| 32            |           |                 |         |          |            |  |                    |
| 33            |           |                 |         |          |            |  |                    |

COMPLETION DEPTH: 41.5 ft.  
 DEPTH TO WATER  
 First Encountered (☒): 41.5 ft.  
 At End of Drilling (☒): None  
 BACKFILLED WITH: Bentonite Chips  
 DRILLING DATE: March 29, 1999

DRILLING METHOD: Hollow Stem  
 DRILLED BY: Gregg Drilling  
 LOGGED BY: DJ. Poehls  
 CHECKED BY: D. Gerry

The log and data presented are a simplification of actual condition encountered at the time of probing at the probed locations. Subsurface conditions may differ at other locations and with the passage of time.

**LOG OF SOIL BORING SB5-7  
 Kerr-McGee Chemical LLC  
 Henderson, Nevada Facility**

| ELEVATION, ft | DEPTH, ft | MATERIAL SYMBOL | SAMPLES | BLOWS/FT | SAMPLE NO. | LOCATION: Former diesel fuel storage tank area  | PID READING (PPMV) |
|---------------|-----------|-----------------|---------|----------|------------|---|--------------------|
|               |           |                 |         |          |            | SURFACE EL: Not Surveyed  |                    |
|               |           |                 |         |          |            | MATERIAL DESCRIPTIONS   |                    |
| 35            |           |                 |         | 33       | SB5-7-35.0 | Firm, medium orangish brown, very fine grained poorly graded sand, damp, no unusual odors or stains noted |                    |
| 36            |           |                 |         |          |            | Sandy SILT (ML):  |                    |
| 37            |           |                 |         |          |            |   |                    |
| 38            |           |                 |         |          |            |   |                    |
| 39            |           |                 |         |          |            |   |                    |
| 40            |           |                 |         | 25       | SB5-7-40.0 | SILT (ML): Trace clay, medium orange brown, moist to wet, very slightly plastic, no stains or odors       |                    |
| 41            |           |                 |         |          |            |   |                    |
| 42            |           |                 |         |          |            |   |                    |
| 43            |           |                 |         |          |            |   |                    |
| 44            |           |                 |         |          |            |   |                    |
| 45            |           |                 |         |          |            | Boring terminated at the capillary fringe   |                    |
| 46            |           |                 |         |          |            |   |                    |
| 47            |           |                 |         |          |            |   |                    |
| 48            |           |                 |         |          |            |   |                    |
| 49            |           |                 |         |          |            |   |                    |
| 50            |           |                 |         |          |            |   |                    |
| 51            |           |                 |         |          |            |   |                    |
| 52            |           |                 |         |          |            |   |                    |
| 53            |           |                 |         |          |            |   |                    |
| 54            |           |                 |         |          |            |   |                    |
| 55            |           |                 |         |          |            |   |                    |
| 56            |           |                 |         |          |            |   |                    |
| 57            |           |                 |         |          |            |   |                    |
| 58            |           |                 |         |          |            |   |                    |
| 59            |           |                 |         |          |            |   |                    |
| 60            |           |                 |         |          |            |   |                    |
| 61            |           |                 |         |          |            |   |                    |
| 62            |           |                 |         |          |            |   |                    |
| 63            |           |                 |         |          |            |   |                    |
| 64            |           |                 |         |          |            |   |                    |
| 65            |           |                 |         |          |            |   |                    |
| 66            |           |                 |         |          |            |   |                    |
| 67            |           |                 |         |          |            |   |                    |

COMPLETION DEPTH: 41.5 ft.  
 DEPTH TO WATER  
 First Encountered (☒): 41.5 ft.  
 At End of Drilling (☒): None  
 BACKFILLED WITH: Bentonite Chips  
 DRILLING DATE: March 29, 1999

DRILLING METHOD: Hollow Stem  
 DRILLED BY: Gregg Drilling  
 LOGGED BY: DJ. Poehls  
 CHECKED BY: D. Gerry

The log and data presented are a simplification of actual condition encountered at the time of probing at the probed locations. Subsurface conditions may differ at other locations and with the passage of time.

**LOG OF SOIL BORING SB5-7  
 Kerr-McGee Chemical LLC  
 Henderson, Nevada Facility**

G:\DWG\402000\SB5-7A



| ELEVATION, ft | DEPTH, ft | MATERIAL SYMBOL | SAMPLES | BLOWS/FT | SAMPLE NO.  | LOCATION: Old P-2 pond bottom<br>SURFACE EL: Not Surveyed<br>MATERIAL DESCRIPTIONS               | PID READING (PPMV) |
|---------------|-----------|-----------------|---------|----------|-------------|--|--------------------|
| 1             |           |                 |         |          |             | Gravelly SAND (SW): Dry, no unusual odors or stains noted  |                    |
| 2             |           |                 |         |          | SB2-14-1.5  |  |                    |
| 3             |           |                 |         |          |             |  |                    |
| 4             |           |                 |         |          | SB2-14-3.0  | SAND (SW): Well graded, trace fine gravel  |                    |
| 5             |           |                 |         |          | SB2-14-4.5  |  |                    |
| 6             |           |                 |         |          | SB2-14-6.0  |  |                    |
| 7             |           |                 |         |          |             | Silty SAND (SM):   |                    |
| 8             |           |                 |         |          | SB2-14-7.5  |  |                    |
| 9             |           |                 |         |          |             | Gravelly SAND (SW):  |                    |
| 10            |           |                 |         |          | SB2-14-9.0  | Silty SAND (SM):   |                    |
| 11            |           |                 |         |          |             |  |                    |
| 12            |           |                 |         |          | SB2-14-10.5 | Gravelly silty SAND (SM):  |                    |
| 13            |           |                 |         |          | SB2-14-12.0 | Silty SAND (SM):   |                    |
| 14            |           |                 |         |          | SB2-14-13.5 | Gravelly SAND (SW): Damp   |                    |
| 15            |           |                 |         |          | SB2-14-15.0 | Silty SAND (SM): Damp  |                    |
| 16            |           |                 |         |          | SB2-14-16.5 | Gravelly SAND (SW):  |                    |
| 17            |           |                 |         |          |             |  |                    |
| 18            |           |                 |         |          | SB2-14-18.0 |  |                    |
| 19            |           |                 |         |          |             | Sandy GRAVEL (GW):   |                    |
| 20            |           |                 |         |          | SB2-14-19.5 | dark orange brown  |                    |
| 21            |           |                 |         |          | SB2-14-21.0 | Gravelly SAND (SW):  |                    |
| 22            |           |                 |         |          |             |  |                    |
| 23            |           |                 |         |          | SB2-14-22.5 | Sandy GRAVEL (GW):   |                    |
| 24            |           |                 |         |          |             |  |                    |
| 25            |           |                 |         |          | SB2-14-24.0 | Gravelly SILT (ML): No odors or stains noted   |                    |
| 26            |           |                 |         |          | SB2-14-25.5 | SILT (SM): Yellow brown, fine caliche stringers, trace fine grained gravel, sweet odor no stains |                    |
| 27            |           |                 |         |          | SB2-14-27.0 |  |                    |
| 28            |           |                 |         |          | SB2-14-28.5 |  |                    |
| 29            |           |                 |         |          |             |  |                    |
| 30            |           |                 |         |          | SB2-14-30.0 |  |                    |
| 31            |           |                 |         |          |             |  |                    |
| 32            |           |                 |         |          | SB2-14-31.5 | SILT (ML): Orange brown, moist   |                    |
| 33            |           |                 |         |          | SB2-14-33.0 | SILT (ML) wet: (Boring terminated at capillary fringe)   |                    |

COMPLETION DEPTH: 33.5 Ft.

DEPTH TO WATER

First Encountered (☒): 33.0 ft.

At End of Drilling (☒): None

BACKFILLED WITH: Bentonite Chips

DRILLING DATE: March 30, 1999

DRILLING METHOD: Hollow Stem

DRILLED BY: Gregg Drilling

LOGGED BY: DJ. Poehls

CHECKED BY: D. Gerry

The log and data presented are a simplification of actual condition encountered at the time of probing at the probed locations. Subsurface conditions may differ at other locations and with the passage of time.

**LOG OF SOIL BORING SB2-14  
 Kerr-McGee Chemical LLC  
 Henderson, Nevada Facility**

| ELEVATION, ft | DEPTH, ft | MATERIAL SYMBOL | SAMPLES | BLOWS/FT | SAMPLE NO.  | LOCATION: Old P-2 pond bottom<br>SURFACE EL: Not Surveyed<br>MATERIAL DESCRIPTIONS | PID READING (PPMV) |
|---------------|-----------|-----------------|---------|----------|-------------|--|--------------------|
| 1             |           |                 |         |          |             | Gravelly SAND (SW):  |                    |
| 2             |           |                 |         |          | SB2-15-1.5  |  |                    |
| 3             |           |                 |         |          | SB2-15-3.0  | light orange brown   |                    |
| 4             |           |                 |         |          | SB2-15-4.5  |  |                    |
| 5             |           |                 |         |          | SB2-15-6.0  | Silty SAND (SM): Trace of fine grained gravel                                      |                    |
| 6             |           |                 |         |          | SB2-15-7.5  | Gravelly SAND (SW):  |                    |
| 7             |           |                 |         |          | SB2-15-9.0  |  |                    |
| 8             |           |                 |         |          | SB2-15-10.5 | Silty SAND (SM):   |                    |
| 9             |           |                 |         |          | SB2-15-12.0 | trace of fine grained angular gravel   |                    |
| 10            |           |                 |         |          | SB2-15-13.5 | SAND (SP): Trace gravel  |                    |
| 11            |           |                 |         |          | SB2-15-15.0 | Gravelly silty SAND (SM): Poorly graded, very fine sand, occasional medium gravel  |                    |
| 12            |           |                 |         |          | SB2-15-16.5 |  |                    |
| 13            |           |                 |         |          | SB2-15-18.0 | Sandy GRAVEL (GP):   |                    |
| 14            |           |                 |         |          | SB2-15-19.5 | SAND (SW): Very well graded, angular coarse grained, fine grained gravel           |                    |
| 15            |           |                 |         |          | SB2-15-21.0 |  |                    |
| 16            |           |                 |         |          | SB2-15-22.5 | Silty SAND (SM): Very fine sand, dry, light orange brown                           |                    |
| 17            |           |                 |         |          | SB2-15-25.5 | SAND (SP): Poorly graded, very fine sand, trace coarse sand                        |                    |
| 18            |           |                 |         |          | SB2-15-27.0 |  |                    |
| 19            |           |                 |         |          | SB2-15-28.5 | Gravelly silty SAND (SP): Thin layers of caliche                                   |                    |
| 20            |           |                 |         |          | SB2-15-30.0 | SAND (SW): Very well graded, moist   |                    |
| 21            |           |                 |         |          | SB2-15-31.5 | SILT (ML): Slightly compacted  |                    |
| 22            |           |                 |         |          | SB2-15-33.0 | SAND (SP): moderately well graded, silt layers, wet                                |                    |

COMPLETION DEPTH: 33.5 Ft.

(Boring terminated at the capillary fringe)

DRILLING METHOD: Hollow Stem

DEPTH TO WATER

DRILLED BY: Gregg Drilling

First Encountered (☒): None

LOGGED BY: DJ. Poehls

At End of Drilling (☒): None

CHECKED BY: D. Gerry

BACKFILLED WITH: Bentonite Chips

DRILLING DATE: March 30, 1999

The log and data presented are a simplification of actual condition encountered at the time of probing at the probed locations. Subsurface conditions may differ at other locations and with the passage of time.

**LOG OF SOIL BORING SB2-15**  
**Kerr-McGee Chemical LLC**  
**Henderson, Nevada Facility**

| ELEVATION, ft | DEPTH, ft | MATERIAL SYMBOL | SAMPLES BLOWS/FT | SAMPLE NO.  | LOCATION: Old P-3 pond bottom<br>SURFACE EL: Not Surveyed<br>MATERIAL DESCRIPTIONS | PID READING (PPMV) |
|---------------|-----------|-----------------|------------------|-------------|--|--------------------|
| 1             |           |                 |                  |             |  |                    |
| 2             |           |                 |                  | SB2-16-1.5  | Sandy SILT (ML): coarse grained, black silt  |                    |
| 3             |           |                 |                  | SB2-16-3.0  |  |                    |
| 4             |           |                 |                  | SB2-16-4.5  |  |                    |
| 5             |           |                 |                  | SB2-16-6.0  | Gravelly SAND (SP):  |                    |
| 6             |           |                 |                  | SB2-16-7.5  |  |                    |
| 7             |           |                 |                  | SB2-16-9.0  |  |                    |
| 8             |           |                 |                  | SB2-16-10.5 | SAND (SP):   |                    |
| 9             |           |                 |                  | SB2-16-12.0 | Gravelly SAND (SP):  |                    |
| 10            |           |                 |                  | SB2-16-13.5 | Silty SAND (SM):   |                    |
| 11            |           |                 |                  | SB2-16-15.0 | Gravelly silty SAND (SW):  |                    |
| 12            |           |                 |                  | SB2-16-16.5 |  |                    |
| 13            |           |                 |                  | SB2-16-18.0 | SAND (SP):   |                    |
| 14            |           |                 |                  | SB2-16-19.5 | Gravelly SAND (SP):  |                    |
| 15            |           |                 |                  | SB2-16-21.0 | SAND (SW): Very well graded, predominately coarse grained, trace silt              |                    |
| 16            |           |                 |                  | SB2-16-22.5 | trace fine gravel  |                    |
| 17            |           |                 |                  | SB2-16-24.0 | dark brown, black, orange  |                    |
| 18            |           |                 |                  | SB2-16-25.5 | Silty SAND (SM): Stringers of caliche, light orange brown                          |                    |
| 19            |           |                 |                  | SB2-16-27.0 |  |                    |
| 20            |           |                 |                  | SB2-16-28.5 | Gravelly silty SAND (SW): dark orange brown  |                    |
| 21            |           |                 |                  | SB2-16-30.0 | Silty SAND (SM): Tan, dry, partially cemented                                      |                    |
| 22            |           |                 |                  | SB2-16-31.5 |  |                    |
| 23            |           |                 |                  | SB2-16-33.0 | SILT (ML): Slightly compacted, moist   |                    |
| 24            |           |                 |                  | SB2-16-34.0 |  |                    |

COMPLETION DEPTH: 34.5 Ft.  
DEPTH TO WATER

(Boring terminated at the capillary fringe)

DRILLING METHOD: Hollow Stem  
DRILLED BY: Gregg Drilling  
LOGGED BY: DJ. Poehls  
CHECKED BY: D. Gerry

First Encountered (☒): None  
At End of Drilling (☒): None

BACKFILLED WITH: Bentonite Chips  
DRILLING DATE: March 30, 1999

The log and data presented are a simplification of actual condition encountered at the time of probing at the probed locations. Subsurface conditions may differ at other locations and with the passage of time.

**LOG OF SOIL BORING SB2-16  
Kerr-McGee Chemical LLC  
Henderson, Nevada Facility**

| ELEVATION, ft | DEPTH, ft | MATERIAL SYMBOL | SAMPLES BLOWS/FT | SAMPLE NO.  | LOCATION: Old P-3 Pond Bottom<br>SURFACE EL: Not Surveyed<br>MATERIAL DESCRIPTIONS                              | PID READING (PPMV) |
|---------------|-----------|-----------------|------------------|-------------|---|--------------------|
| 1             |           |                 |                  | SB2-17-1.5  | Silty Sand (SM): Lenses of black loam, no unusual odors or stains noted   |                    |
| 2             |           |                 |                  | SB2-17-3.0  |   |                    |
| 3             |           |                 |                  | SB2-17-4.5  |   |                    |
| 4             |           |                 |                  | SB2-17-6.0  |   |                    |
| 5             |           |                 |                  | SB2-17-7.5  | SAND (SP): Fine to very fine, poorly graded<br>gravel at 7.5', moderately graded sand, very fine-medium, graded |                    |
| 6             |           |                 |                  | SB2-17-8.0  |   |                    |
| 7             |           |                 |                  | SB2-17-9.0  | No Sample   |                    |
| 8             |           |                 |                  | SB2-17-10.0 |   |                    |
| 9             |           |                 |                  | SB2-17-11.0 | fine to medium graded sand as above   |                    |
| 10            |           |                 |                  | SB2-17-12.0 |   |                    |
| 11            |           |                 |                  | SB2-17-13.5 | Gravelly SAND (GP): Moderately graded   |                    |
| 12            |           |                 |                  | SB2-17-15.0 |   |                    |
| 13            |           |                 |                  | SB2-17-16.5 | SAND (SP):<br>Gravelly SAND (GP): Moderately graded   |                    |
| 14            |           |                 |                  | SB2-17-18.0 |   |                    |
| 15            |           |                 |                  | SB2-17-19.5 | SAND (SP): Fine to coarse sand with gravel, partially cemented with "caliche"                                   |                    |
| 16            |           |                 |                  | SB2-17-21.0 |   |                    |
| 17            |           |                 |                  | SB2-17-22.5 | SAND (SW): Moderately well graded   |                    |
| 18            |           |                 |                  | SB2-17-24.0 |   |                    |
| 19            |           |                 |                  | SB2-17-25.5 | SAND (SW): Very well graded coarse graded sand  |                    |
| 20            |           |                 |                  | SB2-17-27.0 |   |                    |
| 21            |           |                 |                  | SB2-17-28.5 | SILT (ML): Light orange brown, damp, no unusual odors or stains noted   |                    |
| 22            |           |                 |                  | SB2-17-30.0 |   |                    |
| 23            |           |                 |                  | SB2-17-31.5 | Sandy SILT (SM): Light orange brown, damp, no unusual odors or stains noted                                     |                    |
| 24            |           |                 |                  | SB2-17-33.0 |   |                    |
| 25            |           |                 |                  | SB2-17-33.0 | SILT (ML): Light orange brown, wet, no unusual odors or stains noted  |                    |

COMPLETION DEPTH: 33.5 Ft.  
DEPTH TO WATER

First Encountered (▽): 33.0 ft.  
At End of Drilling (⊕): None

BACKFILLED WITH: Bentonite Chips  
DRILLING DATE: March 30, 1999

(Boring terminated at the capillary fringe)

DRILLING METHOD: Hollow Stem  
DRILLED BY: Gregg Drilling  
LOGGED BY: DJ. Poehls  
CHECKED BY: D. Gerry

The log and data presented are a simplification of actual condition encountered at the time of probing at the probed locations. Subsurface conditions may differ at other locations and with the passage of time.

**LOG OF SOIL BORING SB2-17**  
**Kerr-McGee Chemical LLC**  
**Henderson, Nevada Facility**

| ELEVATION, ft | DEPTH, ft | MATERIAL SYMBOL | SAMPLES BLOWS/FT | SAMPLE NO.  | LOCATION: North side of old P-2 Pond<br>SURFACE EL: Not Surveyed<br>MATERIAL DESCRIPTIONS             | PID READING (PPMV) |
|---------------|-----------|-----------------|------------------|-------------|---|--------------------|
| 1             | 2         |                 |                  | SB2-18-2.0  | Silty Sand (SM): poorly graded fine grained sand, dry, no unusual odors or stains noted               |                    |
| 3             | 4         |                 |                  |             |   |                    |
| 5             | 6         |                 |                  | SB2-18-5.0  |   |                    |
| 7             | 8         |                 |                  | SB2-18-6.5  |   |                    |
| 9             | 10        |                 |                  | SB2-18-8.0  |   |                    |
| 11            | 12        |                 |                  | SB2-18-9.5  | Gravelly silty SAND (SM): light orange to brown, medium grained with sub-angular gravel               |                    |
| 13            | 14        |                 |                  |             |   |                    |
| 15            | 16        |                 |                  | SB2-18-11.0 |   |                    |
| 17            | 18        |                 |                  | SB2-18-12.5 |   |                    |
| 19            | 20        |                 |                  | SB2-18-14.0 |   |                    |
| 21            | 22        |                 |                  | SB2-18-15.5 | Gravelly SAND (SP): Very fine grained poorly graded sand, no odors or stains noted                    |                    |
| 23            | 24        |                 |                  |             |   |                    |
| 25            | 26        |                 |                  | SB2-18-17.0 |   |                    |
| 27            | 28        |                 |                  | SB2-18-18.5 |   |                    |
| 29            | 30        |                 |                  | SB2-18-20.0 |   |                    |
| 31            | 32        |                 |                  | SB2-18-21.5 | Sandy GRAVEL (GW): Sub-angular fine to medium grained gravel  |                    |
| 33            | 34        |                 |                  |             |   |                    |
| 35            | 36        |                 |                  | SB2-18-23.0 |   |                    |
| 37            | 38        |                 |                  | SB2-18-24.5 |   |                    |
| 39            | 40        |                 |                  | SB2-18-26.0 |   |                    |
| 41            | 42        |                 |                  | SB2-18-27.5 | SAND (SP): Very fine to fine grained sand, trace fine gravel, poorly graded, no odors or stains noted |                    |
| 43            | 44        |                 |                  |             |   |                    |
| 45            | 46        |                 |                  | SB2-18-29.0 |   |                    |
| 47            | 48        |                 |                  | SB2-18-30.5 |   |                    |
| 49            | 50        |                 |                  | SB2-18-32.0 |   |                    |
| 51            | 52        |                 |                  |             | Sandy SILT (SM): Very fine grained sand, occasional fine grained gravel, no odors or stains           |                    |
| 53            | 54        |                 |                  |             |   |                    |

COMPLETION DEPTH: 43.0 ft.  
 DEPTH TO WATER  
 First Encountered (☒): 43.0 ft.  
 At End of Drilling (☒): None  
 BACKFILLED WITH: Bentonite Chips  
 DRILLING DATE: March 31, 1999

DRILLING METHOD: Hollow Stem  
 DRILLED BY: Gregg Drilling  
 LOGGED BY: D.J. Poehlis  
 CHECKED BY: D. Gerry

The log and data presented are a simplification of actual condition encountered at the time of probing at the probed locations. Subsurface conditions may differ at other locations and with the passage of time.

**LOG OF SOIL BORING SB2-18**  
**Kerr-McGee Chemical LLC**  
**Henderson, Nevada Facility**

| ELEVATION, ft | DEPTH, ft | MATERIAL SYMBOL | SAMPLES | BLOWS/FT | SAMPLE NO.  | LOCATION: North Side of old P-2 Pond<br>SURFACE EL: Not Surveyed<br>MATERIAL DESCRIPTIONS | PID READING (PPMV) |
|---------------|-----------|-----------------|---------|----------|-------------|---|--------------------|
| 35            |           |                 |         |          |             | SILT (ML):  |                    |
| 36            |           |                 |         |          |             |   |                    |
| 37            |           |                 |         |          | SB2-18-36.5 | SAND (SP): Coarse grained sand, mottled black, brown and orange                           |                    |
| 38            |           |                 |         |          | SB2-18-38.0 | Silty SAND (SM): Light tan, partly cemented caliche                                       |                    |
| 39            |           |                 |         |          | SB2-18-39.5 |   |                    |
| 40            |           |                 |         |          | SB2-18-39.5 | SILT (ML): With laminations of fine sand  |                    |
| 41            |           |                 |         |          | SB2-18-41.0 |   |                    |
| 42            |           |                 |         |          | SB2-18-42.5 | Sandy SILT (SM): Orange brown, very fine grained sand, wet                                |                    |
| 43            |           |                 |         |          |             |   |                    |
| 44            |           |                 |         |          |             | Boring terminated at the capillary fringe   |                    |
| 45            |           |                 |         |          |             |   |                    |
| 46            |           |                 |         |          |             |   |                    |
| 47            |           |                 |         |          |             |   |                    |
| 48            |           |                 |         |          |             |   |                    |
| 49            |           |                 |         |          |             |   |                    |
| 50            |           |                 |         |          |             |   |                    |
| 51            |           |                 |         |          |             |   |                    |
| 52            |           |                 |         |          |             |   |                    |
| 53            |           |                 |         |          |             |   |                    |
| 54            |           |                 |         |          |             |   |                    |
| 55            |           |                 |         |          |             |   |                    |
| 56            |           |                 |         |          |             |   |                    |
| 57            |           |                 |         |          |             |   |                    |
| 58            |           |                 |         |          |             |   |                    |
| 59            |           |                 |         |          |             |   |                    |
| 60            |           |                 |         |          |             |   |                    |
| 61            |           |                 |         |          |             |   |                    |
| 62            |           |                 |         |          |             |   |                    |
| 63            |           |                 |         |          |             |   |                    |
| 64            |           |                 |         |          |             |   |                    |
| 65            |           |                 |         |          |             |   |                    |
| 66            |           |                 |         |          |             |   |                    |
| 67            |           |                 |         |          |             |   |                    |

COMPLETION DEPTH: 43.0 ft.  
 DEPTH TO WATER  
 First Encountered (☒): 43.0 ft.  
 At End of Drilling (☒): None  
 BACKFILLED WITH: Bentonite Chips  
 DRILLING DATE: March 31, 1999

DRILLING METHOD: Hollow Stem  
 DRILLED BY: Gregg Drilling  
 LOGGED BY: DJ. Poehls  
 CHECKED BY: D. Gerry

The log and data presented are a simplification of actual condition encountered at the time of probing at the probed locations. Subsurface conditions may differ at other locations and with the passage of time.

**LOG OF SOIL BORING SB2-18**  
**Kerr-McGee Chemical LLC**  
**Henderson, Nevada Facility**

G:\DWG\4020\004\SB2-18.dwg

| ELEVATION, ft | DEPTH, ft | MATERIAL SYMBOL | SAMPLES BLOWS/FT | SAMPLE NO.  | LOCATION: East berm of old P-2 Pond<br>SURFACE EL: Not Surveyed<br>MATERIAL DESCRIPTIONS  | PID READING (PPMV) |
|---------------|-----------|-----------------|------------------|-------------|---|--------------------|
| 1             | 2         |                 |                  | SB2-19-2.0  | Silty SAND (SC): Mixture of sand, silt and clay with organic matter (loam), black, dry, fibrous, soft, no unusual odors or stains noted |                    |
| 3             | 5         |                 |                  | SB2-19-5.0  | as above, more consolidated   |                    |
| 6             | 6.5       |                 |                  | SB2-19-6.5  |   |                    |
| 8             | 8.0       |                 |                  | SB2-19-8.0  |   |                    |
| 9             | 9.5       |                 |                  | SB2-19-9.5  | Gravelly SAND (GP): Medium orange brown, dry, poorly graded, no odors or stains noted   |                    |
| 10            | 11.0      |                 |                  | SB2-19-11.0 | SAND (SP): Dark brown (loam) with dark orange brown sand, no odors or stains noted  |                    |
| 12            | 12.5      |                 |                  | SB2-19-12.5 | Silty SAND (SM): Trace inclusions of caliche, no odors or stains noted  |                    |
| 14            | 14.0      |                 |                  | SB2-19-14.0 | Gravelly SAND to Sandy GRAVEL (SP-GP): Very dense, medium to grained sub-angular gravel, no odors or stains                             |                    |
| 15            | 15.5      |                 |                  | SB2-19-15.5 |   |                    |
| 17            | 17.0      |                 |                  | SB2-19-17.0 |   |                    |
| 18            | 18.5      |                 |                  | SB2-19-18.5 | Silty gravelly SAND (SM): Very dense, poorly graded fine to medium grained sand   |                    |
| 19            | 20.0      |                 |                  | SB2-19-20.0 |   |                    |
| 21            | 21.5      |                 |                  | SB2-19-21.5 |   |                    |
| 22            | 23.0      |                 |                  | SB2-19-23.0 | Silty sandy GRAVEL (GM): Fine to medium grained gravel, well graded sand  |                    |
| 24            | 24.5      |                 |                  | SB2-19-24.5 | Gravelly silty SAND (SM): Very dense  |                    |
| 25            | 26.0      |                 |                  | SB2-19-26.0 | Silty GRAVEL (GM): very dense, Fine to medium grained gravel  |                    |
| 26            | 27.5      |                 |                  | SB2-19-27.5 | Gravelly SAND (SW): Well graded sand  |                    |
| 28            | 29.0      |                 |                  | SB2-19-29.0 | SAND (SW): well graded  |                    |
| 29            | 30.5      |                 |                  | SB2-19-30.5 |   |                    |
| 31            | 32.0      |                 |                  | SB2-19-32.0 | Gravelly SAND with silt (SM): moderately graded very fine to medium grained sand, fine gravel   |                    |
| 32            |           |                 |                  |             | Silty SAND (SM): Fine grained sand, very poorly graded, no unusual odors or stains  |                    |
| 33            |           |                 |                  |             |   |                    |

COMPLETION DEPTH: 43.0 ft.

DEPTH TO WATER

First Encountered (☒): None

At End of Drilling (☒): None

BACKFILLED WITH: Bentonite Chips

DRILLING DATE: March 31, 1999

DRILLING METHOD: Hollow Stem

DRILLED BY: Gregg Drilling

LOGGED BY: DJ. Poehls

CHECKED BY: D. Gerry

The log and data presented are a simplification of actual condition encountered at the time of probing at the probed locations. Subsurface conditions may differ at other locations and with the passage of time.

**LOG OF SOIL BORING SB2-19**  
**Kerr-McGee Chemical LLC**  
**Henderson, Nevada Facility**

| ELEVATION, ft | DEPTH, ft | MATERIAL SYMBOL | SAMPLES | BLOWS/FT | SAMPLE NO.  | LOCATION: East berm of old P-2 Pond<br>SURFACE EL: Not Surveyed<br>MATERIAL DESCRIPTIONS | PID READING (PPMV) |
|---------------|-----------|-----------------|---------|----------|-------------|--|--------------------|
| 35            |           |                 |         |          | SB2-19-35.0 | Silty SAND (SM): Very poorly graded, fine grained sand                                   |                    |
| 36            |           |                 |         |          |             | SAND (SP): Poorly graded fine sand, layers partly cemented with caliche                  |                    |
| 37            |           |                 |         |          | SB2-19-36.5 | Silty SAND (SM): Very poorly graded, fine grained sand                                   |                    |
| 38            |           |                 |         |          | SB2-19-38.0 |  |                    |
| 39            |           |                 |         |          | SB2-19-39.5 |  |                    |
| 40            |           |                 |         |          | SB2-19-41.0 | SILT (ML): With trace clay and occasional coarse grained sand (SP) , moist               |                    |
| 41            |           |                 |         |          | SB2-19-41.0 |  |                    |
| 42            |           |                 |         |          | SB2-19-42.5 | Clayey SILT (ML): with trace of sub-rounded medium grained gravel, moist to wet          |                    |
| 43            |           |                 |         |          |             | Boring terminated at the capillary fringe - 43.0 ft.                                     |                    |
| 44            |           |                 |         |          |             |  |                    |
| 45            |           |                 |         |          |             |  |                    |
| 46            |           |                 |         |          |             |  |                    |
| 47            |           |                 |         |          |             |  |                    |
| 48            |           |                 |         |          |             |  |                    |
| 49            |           |                 |         |          |             |  |                    |
| 50            |           |                 |         |          |             |  |                    |
| 51            |           |                 |         |          |             |  |                    |
| 52            |           |                 |         |          |             |  |                    |
| 53            |           |                 |         |          |             |  |                    |
| 54            |           |                 |         |          |             |  |                    |
| 55            |           |                 |         |          |             |  |                    |
| 56            |           |                 |         |          |             |  |                    |
| 57            |           |                 |         |          |             |  |                    |
| 58            |           |                 |         |          |             |  |                    |
| 59            |           |                 |         |          |             |  |                    |
| 60            |           |                 |         |          |             |  |                    |
| 61            |           |                 |         |          |             |  |                    |
| 62            |           |                 |         |          |             |  |                    |
| 63            |           |                 |         |          |             |  |                    |
| 64            |           |                 |         |          |             |  |                    |
| 65            |           |                 |         |          |             |  |                    |
| 66            |           |                 |         |          |             |  |                    |
| 67            |           |                 |         |          |             |  |                    |

COMPLETION DEPTH: 43.0 ft.  
 DEPTH TO WATER  
 First Encountered (☒): None  
 At End of Drilling (☒): None  
 BACKFILLED WITH: Bentonite Chips  
 DRILLING DATE: March 31, 1999

DRILLING METHOD: Hollow Stem  
 DRILLED BY: Gregg Drilling  
 LOGGED BY: DJ. Poehls  
 CHECKED BY: D. Gerry

The log and data presented are a simplification of actual condition encountered at the time of probing at the probed locations. Subsurface conditions may differ at other locations and with the passage of time.

**LOG OF SOIL BORING SB2-19**  
**Kerr-McGee Chemical LLC**  
**Henderson, Nevada Facility**



| ELEVATION, ft | DEPTH, ft | MATERIAL SYMBOL | SAMPLES | BLOWS/FT | SAMPLE NO.  | LOCATION: North berm of former P-3 Pond<br><br>SURFACE EL: Not Surveyed<br><br>MATERIAL DESCRIPTIONS | PID READING (PPMV) |
|---------------|-----------|-----------------|---------|----------|-------------|--|--------------------|
| 1             | 2         |                 |         |          |             | Hand Augered to 5', No samples collected   |                    |
| 5             | 6         |                 |         |          | SB2-20-5.0  | Silty SAND (SM):   |                    |
| 7             | 8         |                 |         |          | SB2-20-7.0  | Gravelly SAND (SP):  |                    |
| 10            | 11        |                 |         |          | SB2-20-9.5  | Silty SAND (SM): Very fine grained, very poorly graded   |                    |
| 11            | 12        |                 |         |          | SB2-20-11.0 | Gravelly SAND (SP):  |                    |
| 13            | 14        |                 |         |          | SB2-20-12.5 | SAND (SP):   |                    |
| 15            | 16        |                 |         |          | SB2-20-14.0 | occasional gravel  |                    |
| 16            | 17        |                 |         |          | SB2-20-15.5 |  |                    |
| 17            | 18        |                 |         |          | SB2-20-17.0 |  |                    |
| 18            | 19        |                 |         |          | SB2-20-18.5 | silty sand with trace gravel   |                    |
| 20            | 21        |                 |         |          | SB2-20-20.0 |  |                    |
| 22            | 23        |                 |         |          | SB2-20-21.5 |  |                    |
| 23            | 24        |                 |         |          | SB2-20-23.0 | occasional to trace gravel   |                    |
| 25            | 26        |                 |         |          | SB2-20-24.5 | Gravelly SAND (SP): With trace silt:   |                    |
| 27            | 28        |                 |         |          | SB2-20-26.0 | Silty SAND (SW): With occasional fine grained gravel   |                    |
| 28            | 29        |                 |         |          | SB2-20-27.5 | Gravelly SAND (SP): Trace silt, very well graded sand, occasional sub-angular gravel                 |                    |
| 30            | 31        |                 |         |          | SB2-20-28.0 |  |                    |
| 31            | 32        |                 |         |          | SB2-20-30.5 | SAND (SW): Very well graded  |                    |
| 32            | 33        |                 |         |          | SB2-20-32.0 | Gravelly SAND (SW): Very well graded sand as above, fine grained gravel, black, brown to orange:     |                    |

COMPLETION DEPTH: 41.5 ft.

DEPTH TO WATER

First Encountered (☒): None

At End of Drilling (☒): None

BACKFILLED WITH: Bentonite Chips

DRILLING DATE: March 31, 1999

DRILLING METHOD: Hollow Stem

DRILLED BY: Gregg Drilling

LOGGED BY: DJ. Poehls

CHECKED BY: D. Gerry

The log and data presented are a simplification of actual condition encountered at the time of probing at the probed locations. Subsurface conditions may differ at other locations and with the passage of time.

**LOG OF SOIL BORING SB2-20**  
**Kerr-McGee Chemical LLC**  
**Henderson, Nevada Facility**

| ELEVATION, ft | DEPTH, ft | MATERIAL SYMBOL | SAMPLES | BLOWS/FT | SAMPLE NO.  | LOCATION: North berm of former P-3 Pond<br><br>SURFACE EL: Not Surveyed<br><br>MATERIAL DESCRIPTIONS | PID READING (PPMV) |
|---------------|-----------|-----------------|---------|----------|-------------|--|--------------------|
| 35            |           |                 |         |          | SB2-20-35.0 | Gravelly SAND (SP-GW): Very well graded sand as above, fine grained gravel, black, brown to orange   |                    |
| 36            |           |                 |         |          | SB2-20-36.5 | SILT (ML): Slightly compacted, orange brown with very fine grained sand                              |                    |
| 37            |           |                 |         |          | SB2-20-38.0 |  |                    |
| 38            |           |                 |         |          | SB2-20-39.5 |  |                    |
| 39            |           |                 |         |          | SB2-20-41.0 | Clayey SILT (ML): Moist  |                    |
| 40            |           |                 |         |          |             | Boring terminated at the capillary fringe - 41.5 ft.   |                    |
| 41            |           |                 |         |          |             |  |                    |
| 42            |           |                 |         |          |             |  |                    |
| 43            |           |                 |         |          |             |  |                    |
| 44            |           |                 |         |          |             |  |                    |
| 45            |           |                 |         |          |             |  |                    |
| 46            |           |                 |         |          |             |  |                    |
| 47            |           |                 |         |          |             |  |                    |
| 48            |           |                 |         |          |             |  |                    |
| 49            |           |                 |         |          |             |  |                    |
| 50            |           |                 |         |          |             |  |                    |
| 51            |           |                 |         |          |             |  |                    |
| 52            |           |                 |         |          |             |  |                    |
| 53            |           |                 |         |          |             |  |                    |
| 54            |           |                 |         |          |             |  |                    |
| 55            |           |                 |         |          |             |  |                    |
| 56            |           |                 |         |          |             |  |                    |
| 57            |           |                 |         |          |             |  |                    |
| 58            |           |                 |         |          |             |  |                    |
| 59            |           |                 |         |          |             |  |                    |
| 60            |           |                 |         |          |             |  |                    |
| 61            |           |                 |         |          |             |  |                    |
| 62            |           |                 |         |          |             |  |                    |
| 63            |           |                 |         |          |             |  |                    |
| 64            |           |                 |         |          |             |  |                    |
| 65            |           |                 |         |          |             |  |                    |
| 66            |           |                 |         |          |             |  |                    |
| 67            |           |                 |         |          |             |  |                    |

COMPLETION DEPTH: 41.5 ft.  
 DEPTH TO WATER  
 First Encountered (☒): None  
 At End of Drilling (☒): None  
 BACKFILLED WITH: Bentonite Chips  
 DRILLING DATE: March 31, 1999

DRILLING METHOD: Hollow Stem  
 DRILLED BY: Gregg Drilling  
 LOGGED BY: DJ. Poehls  
 CHECKED BY: D. Gerry

The log and data presented are a simplification of actual condition encountered at the time of probing at the probed locations. Subsurface conditions may differ at other locations and with the passage of time.

**LOG OF SOIL BORING SB2-20**  
**Kerr-McGee Chemical LLC**  
**Henderson, Nevada Facility**

G:\DWG\4020\004\SB2-20.dwg

| ELEVATION, ft | DEPTH, ft | MATERIAL SYMBOL | SAMPLES | BLOWS/FT | SAMPLE NO.  | LOCATION: West berm of former P-3 Pond<br>SURFACE EL: Not Surveyed<br>MATERIAL DESCRIPTIONS | PID READING (PPMV) |
|---------------|-----------|-----------------|---------|----------|-------------|---|--------------------|
| 1             | 1         |                 |         |          |             | Hand Augered to 5', No samples collected  |                    |
| 2             | 2         |                 |         |          |             |   |                    |
| 3             | 3         |                 |         |          |             |   |                    |
| 4             | 4         |                 |         |          |             |   |                    |
| 5             | 5         |                 |         |          |             |   |                    |
| 6             | 6         |                 |         |          | SB2-21-6.5  | Gravelly SAND (SP):   |                    |
| 7             | 7         |                 |         |          | SB2-21-8.0  |   |                    |
| 8             | 8         |                 |         |          | SB2-21-9.5  |   |                    |
| 9             | 9         |                 |         |          | SB2-21-11.0 | Gravelly SAND (SW): Moderately graded, very fine to medium grained sand                     |                    |
| 10            | 10        |                 |         |          | SB2-21-12.5 |   |                    |
| 11            | 11        |                 |         |          | SB2-21-14.0 | Gravelly silty SAND (SW); Moderately well graded sand                                       |                    |
| 12            | 12        |                 |         |          | SB2-21-15.5 | trace clay  |                    |
| 13            | 13        |                 |         |          | SB2-21-17.0 |   |                    |
| 14            | 14        |                 |         |          | SB2-21-18.5 | Silty SAND (SM): With occasional gravel   |                    |
| 15            | 15        |                 |         |          | SB2-21-20.0 |   |                    |
| 16            | 16        |                 |         |          | SB2-21-21.5 | Gravelly SILT (ML): Semi-consolidated, very dense, firm                                     |                    |
| 17            | 17        |                 |         |          | SB2-21-23.0 |   |                    |
| 18            | 18        |                 |         |          | SB2-21-24.5 | Gravelly SAND (SP): poorly graded fine grained sand very fine grained gravel                |                    |
| 19            | 19        |                 |         |          | SB2-21-26.0 |   |                    |
| 20            | 20        |                 |         |          | SB2-21-27.5 | damp, moist   |                    |
| 21            | 21        |                 |         |          | SB2-21-28.0 | Sandy GRAVEL (GP): Poorly graded fine grained gravel, well graded sand                      |                    |
| 22            | 22        |                 |         |          | SB2-21-28.5 | fine to medium grained gravel   |                    |
| 23            | 23        |                 |         |          | SB2-21-29.0 | well graded sand, black/brown little or no fines  |                    |
| 24            | 24        |                 |         |          | SB2-21-29.5 | increasing fine grained gravel  |                    |
| 25            | 25        |                 |         |          | SB2-21-30.0 |   |                    |
| 26            | 26        |                 |         |          | SB2-21-30.5 |   |                    |
| 27            | 27        |                 |         |          | SB2-21-31.0 |   |                    |
| 28            | 28        |                 |         |          | SB2-21-31.5 |   |                    |
| 29            | 29        |                 |         |          | SB2-21-32.0 | Gravelly SAND (SW): Well graded sand predominately coarse grained                           |                    |
| 30            | 30        |                 |         |          |             |   |                    |
| 31            | 31        |                 |         |          |             |   |                    |
| 32            | 32        |                 |         |          |             |   |                    |
| 33            | 33        |                 |         |          |             |   |                    |

COMPLETION DEPTH: 43.0 Ft.

DEPTH TO WATER

First Encountered (☒): None

At End of Drilling (☒): None

BACKFILLED WITH: Bentonite Chips

DRILLING DATE: April 1, 1999

DRILLING METHOD: Hollow Stem

DRILLED BY: Gregg Drilling

LOGGED BY: DJ. Poehls

CHECKED BY: D. Gerry

The log and data presented are a simplification of actual condition encountered at the time of probing at the probed locations. Subsurface conditions may differ at other locations and with the passage of time.

**LOG OF SOIL BORING SB2-21**  
**Kerr-McGee Chemical LLC**  
**Henderson, Nevada Facility**

| ELEVATION, ft | DEPTH, ft | MATERIAL SYMBOL | SAMPLES | BLOWS/FT | SAMPLE NO.  | LOCATION: West berm of former P-3 Pond<br><br>SURFACE EL: Not Surveyed<br><br>MATERIAL DESCRIPTIONS | PID READING (PPMV) |
|---------------|-----------|-----------------|---------|----------|-------------|---|--------------------|
| 35            |           |                 |         |          | SB2-21-35.0 | Silty SAND (SM): Very poorly graded, very fine grained sand, firm                                   |                    |
| 36            |           |                 |         |          |             | Sandy SILT (ML): Firm   |                    |
| 37            |           |                 |         |          | SB2-21-36.5 |   |                    |
| 38            |           |                 |         |          | SB2-21-38.0 | Gravelly SILT (ML): Very fine, dry  |                    |
| 39            |           |                 |         |          |             |   |                    |
| 40            |           |                 |         |          | SB2-21-39.5 | SILT (ML): Occasional gravel  |                    |
| 41            |           |                 |         |          | SB2-21-41.0 |   |                    |
| 42            |           |                 |         |          |             | moist   |                    |
| 43            |           |                 |         |          | SB2-21-42.5 |   |                    |
| 44            |           |                 |         |          |             | Boring terminated at the capillary fringe - 43.0 ft.  |                    |
| 45            |           |                 |         |          |             |   |                    |
| 46            |           |                 |         |          |             |   |                    |
| 47            |           |                 |         |          |             |   |                    |
| 48            |           |                 |         |          |             |   |                    |
| 49            |           |                 |         |          |             |   |                    |
| 50            |           |                 |         |          |             |   |                    |
| 51            |           |                 |         |          |             |   |                    |
| 52            |           |                 |         |          |             |   |                    |
| 53            |           |                 |         |          |             |   |                    |
| 54            |           |                 |         |          |             |   |                    |
| 55            |           |                 |         |          |             |   |                    |
| 56            |           |                 |         |          |             |   |                    |
| 57            |           |                 |         |          |             |   |                    |
| 58            |           |                 |         |          |             |   |                    |
| 59            |           |                 |         |          |             |   |                    |
| 60            |           |                 |         |          |             |   |                    |
| 61            |           |                 |         |          |             |   |                    |
| 62            |           |                 |         |          |             |   |                    |
| 63            |           |                 |         |          |             |   |                    |
| 64            |           |                 |         |          |             |   |                    |
| 65            |           |                 |         |          |             |   |                    |
| 66            |           |                 |         |          |             |   |                    |
| 67            |           |                 |         |          |             |   |                    |

COMPLETION DEPTH: 43.0 ft.

DEPTH TO WATER

First Encountered (☒): None

At End of Drilling (☒): None

BACKFILLED WITH: Bentonite Chips

DRILLING DATE: April 1, 1999

DRILLING METHOD: Hollow Stem

DRILLED BY: Gregg Drilling

LOGGED BY: DJ. Poehls

CHECKED BY: D. Gerry

The log and data presented are a simplification of actual condition encountered at the time of probing at the probed locations. Subsurface conditions may differ at other locations and with the passage of time.

**LOG OF SOIL BORING SB2-21  
 Kerr-McGee Chemical LLC  
 Henderson, Nevada Facility**

| ELEVATION, ft | DEPTH, ft | MATERIAL SYMBOL | SAMPLES | BLOWS/FT | SAMPLE NO.  | LOCATION: South berm of former P-3 Pond<br><br>SURFACE EL: Not Surveyed<br><br>MATERIAL DESCRIPTIONS                                | PID READING (PPMV) |
|---------------|-----------|-----------------|---------|----------|-------------|---|--------------------|
| 1             | 2         |                 |         |          |             | Hand Augered to 5', No samples collected  |                    |
| 3             | 4         |                 |         |          |             |   |                    |
| 5             | 6         |                 |         |          |             | Gravelly SILT (ML): Very soft, extremely low blow count   |                    |
| 7             | 8         |                 |         |          | SB2-22-6.5  |   |                    |
| 9             | 10        |                 |         |          | SB2-22-8.0  |   |                    |
| 11            | 12        |                 |         |          | SB2-22-9.5  |   |                    |
| 13            | 14        |                 |         |          | SB2-22-11.0 | Difficult sample driving, pulled up and checked cuttings-Rx fragments, unknown subsurface obstruction, pulled out & reprob 5' south |                    |
| 15            | 16        |                 |         |          | SB2-22-12.5 |   |                    |
| 17            | 18        |                 |         |          | SB2-22-14.0 |   |                    |
| 19            | 20        |                 |         |          | SB2-22-15.5 | Boring SB2-22B begins here  |                    |
| 21            | 22        |                 |         |          | SB2-22-17.0 | Silty SAND (SM): Silt slightly consolidated but easily broken   |                    |
| 23            | 24        |                 |         |          | SB2-22-18.5 | loose   |                    |
| 25            | 26        |                 |         |          | SB2-22-20.0 | Rock in shoe  |                    |
| 27            | 28        |                 |         |          | SB2-22-21.5 |   |                    |
| 29            | 30        |                 |         |          | SB2-22-23.0 | Poorly graded fine and coarse grained sand  |                    |
| 31            | 32        |                 |         |          | SB2-22-24.5 | Gravelly SAND (SW): Very dense, gravelly  |                    |
| 33            | 34        |                 |         |          | SB2-22-26.0 | well graded sand  |                    |
| 35            | 36        |                 |         |          | SB2-22-27.5 | sand predominately coarse grained, black/brown  |                    |
| 37            | 38        |                 |         |          | SB2-22-29.0 |   |                    |
| 39            | 40        |                 |         |          | SB2-22-30.5 |   |                    |
| 41            | 42        |                 |         |          | SB2-22-32.0 |   |                    |

COMPLETION DEPTH: 44.5 Ft.  
 DEPTH TO WATER

First Encountered (☒): 44.0 ft.  
 At End of Drilling (☒): None

BACKFILLED WITH: Bentonite Chips

DRILLING DATE: April 1, 1999

DRILLING METHOD: Hollow Stem  
 DRILLED BY: Gregg Drilling  
 LOGGED BY: DJ. Poehls  
 CHECKED BY: D. Gerry

The log and data presented are a simplification of actual condition encountered at the time of probing at the probed locations. Subsurface conditions may differ at other locations and with the passage of time.

**LOG OF SOIL BORING SB2-22 And SB2-22B**  
**Kerr-McGee Chemical LLC**  
**Henderson, Nevada Facility**

| ELEVATION, ft | DEPTH, ft | MATERIAL SYMBOL | SAMPLES | BLOWS/FT | SAMPLE NO.  | LOCATION: South berm of former P-3 Pond<br><br>SURFACE EL: Not Surveyed<br><br>MATERIAL DESCRIPTIONS | PID READING (PPMV) |
|---------------|-----------|-----------------|---------|----------|-------------|--|--------------------|
| 35            |           | [Symbol]        |         |          | SB2-22-35.0 | SAND (SW): Very well graded, very dense, non-consolidated, black/brown                               |                    |
| 36            |           | [Symbol]        |         |          | SB2-22-36.5 |  |                    |
| 37            |           | [Symbol]        |         |          | SB2-22-37.5 | Silty SAND (SM): Dry, very poorly graded, very fine grained sand, firm                               |                    |
| 38            |           | [Symbol]        |         |          | SB2-22-38.0 | SILT (ML): zones of partial consolidation and zones of clay  |                    |
| 39            |           | [Symbol]        |         |          |             |  |                    |
| 40            |           | [Symbol]        |         |          | SB2-22-39.5 | caliche stringers  |                    |
| 41            |           | [Symbol]        |         |          | SB2-22-41.0 | trace clay, moist  |                    |
| 42            |           | [Symbol]        |         |          |             |  |                    |
| 43            |           | [Symbol]        |         |          | SB2-22-42.5 |  |                    |
| 44            |           | [Symbol]        |         |          | SB2-22-44.0 |  |                    |
| 45            |           |                 |         |          |             |  |                    |
| 46            |           |                 |         |          |             |  |                    |
| 47            |           |                 |         |          |             | Boring terminated at the capillary fringe - 44.5 ft.   |                    |
| 48            |           |                 |         |          |             |  |                    |
| 49            |           |                 |         |          |             |  |                    |
| 50            |           |                 |         |          |             |  |                    |
| 51            |           |                 |         |          |             |  |                    |
| 52            |           |                 |         |          |             |  |                    |
| 53            |           |                 |         |          |             |  |                    |
| 54            |           |                 |         |          |             |  |                    |
| 55            |           |                 |         |          |             |  |                    |
| 56            |           |                 |         |          |             |  |                    |
| 57            |           |                 |         |          |             |  |                    |
| 58            |           |                 |         |          |             |  |                    |
| 59            |           |                 |         |          |             |  |                    |
| 60            |           |                 |         |          |             |  |                    |
| 61            |           |                 |         |          |             |  |                    |
| 62            |           |                 |         |          |             |  |                    |
| 63            |           |                 |         |          |             |  |                    |
| 64            |           |                 |         |          |             |  |                    |
| 65            |           |                 |         |          |             |  |                    |
| 66            |           |                 |         |          |             |  |                    |
| 67            |           |                 |         |          |             |  |                    |

COMPLETION DEPTH: 44.5 ft.  
 DEPTH TO WATER

First Encountered (▽): 44.0 ft.  
 At End of Drilling (▽): None

BACKFILLED WITH: Bentonite Chips  
 DRILLING DATE: April 1, 1999

DRILLING METHOD: Hollow Stem  
 DRILLED BY: Gregg Drilling  
 LOGGED BY: DJ. Poehls  
 CHECKED BY: D. Gerry

The log and data presented are a simplification of actual condition encountered at the time of probing at the probed locations. Subsurface conditions may differ at other locations and with the passage of time.

**LOG OF SOIL BORING SB2-22 and SB2-22B**  
**Kerr-McGee Chemical LLC**  
**Henderson, Nevada Facility**

| ELEVATION, ft | DEPTH, ft | MATERIAL SYMBOL | SAMPLES | BLOWS/FT | SAMPLE NO.  | LOCATION: West side of Pond P-2 (between Ponds P-2 and P-3)<br>SURFACE EL: Not Surveyed<br>MATERIAL DESCRIPTIONS                                | PID READING (PPMV) |
|---------------|-----------|-----------------|---------|----------|-------------|---|--------------------|
| 1             | 2         |                 |         |          |             | Hand Augered to 5', No samples collected  |                    |
| 5             | 6         |                 |         |          | SB2-23-6.5  | Gravelly SAND (SW): Moderately well graded sand   |                    |
| 6             | 7         |                 |         |          | SB2-23-8.0  |   |                    |
| 7             | 8         |                 |         |          | SB2-23-9.5  |   |                    |
| 10            | 11        |                 |         |          | SB2-23-11.0 | Silty SAND (SM): Trace fine grained gravel, moderately graded sand fine to medium grained gravel  |                    |
| 11            | 12        |                 |         |          | SB2-23-12.5 |   |                    |
| 12            | 13        |                 |         |          | SB2-23-14.0 |   |                    |
| 15            | 16        |                 |         |          | SB2-23-15.5 | Gravelly silty SAND (SM): Very poorly graded, fine grained sand, fine grained gravel  |                    |
| 16            | 17        |                 |         |          | SB2-23-17.0 |   |                    |
| 17            | 18        |                 |         |          | SB2-23-18.5 | Silty SAND to sandy SILT (SM-ML): Very poorly graded, fine grained sand   |                    |
| 18            | 19        |                 |         |          | SB2-23-20.0 |   |                    |
| 19            | 20        |                 |         |          | SB2-23-20.0 | Gravelly silty SAND (SM): Moderately graded, fine to medium grained gravel, poorly graded fine grained sand<br>increasing medium grained gravel |                    |
| 20            | 21        |                 |         |          | SB2-23-21.5 |   |                    |
| 21            | 22        |                 |         |          | SB2-23-23.0 |   |                    |
| 22            | 23        |                 |         |          | SB2-23-23.0 | Silty or sandy GRAVEL (GM): Very well graded gravel, very fine grained sand   |                    |
| 23            | 24        |                 |         |          | SB2-23-24.5 |   |                    |
| 24            | 25        |                 |         |          | SB2-23-26.0 | SAND (SW): Very well graded, predominately coarse grained, black/brown  |                    |
| 25            | 26        |                 |         |          | SB2-23-27.6 |   |                    |
| 26            | 27        |                 |         |          | SB2-23-27.6 | Gravelly SILT (ML): Trace very fine grained sand  |                    |
| 27            | 28        |                 |         |          | SB2-23-29.0 |   |                    |
| 28            | 29        |                 |         |          | SB2-23-29.0 | Sandy SILT (ML): Grading to silt, partially consolidated, very firm   |                    |
| 29            | 30        |                 |         |          | SB2-23-30.5 |   |                    |
| 30            | 31        |                 |         |          | SB2-23-32.0 | SILT (ML): Partially consolidated, very firm, dry   |                    |
| 31            | 32        |                 |         |          | SB2-23-32.0 |   |                    |
| 32            | 33        |                 |         |          |             |   |                    |

COMPLETION DEPTH: 42.5 ft.

DEPTH TO WATER

First Encountered (☒): 42.5 ft.

At End of Drilling (☒): None

BACKFILLED WITH: Bentonite Chips

DRILLING DATE: April 1, 1999

DRILLING METHOD: Hollow Stem

DRILLED BY: Gregg Drilling

LOGGED BY: DJ. Poehls

CHECKED BY: D. Gerry

The log and data presented are a simplification of actual condition encountered at the time of probing at the probed locations. Subsurface conditions may differ at other locations and with the passage of time.

**LOG OF SOIL BORING SB2-23**  
**Kerr-McGee Chemical LLC**  
**Henderson, Nevada Facility**

| ELEVATION, ft | DEPTH, ft | MATERIAL SYMBOL | SAMPLES | BLOWS/FT | SAMPLE NO.  | LOCATION: West side of Pond P-2 (between Ponds P-2 and P-3)<br><br>SURFACE EL: Not Surveyed<br><br>MATERIAL DESCRIPTIONS | PID READING (PPMV) |
|---------------|-----------|-----------------|---------|----------|-------------|--|--------------------|
| 35            |           |                 |         |          | SB2-23-35.0 | SILT (ML): Trace medium grained gravel   |                    |
| 36            |           |                 |         |          | SB2-23-36.5 | Gravely clayey SILT (GM): Damp, angular medium grained gravel  |                    |
| 37            |           |                 |         |          | SB2-23-38.0 | Clayey Silt (ML): Very slight plasticity, no gravel, moist   |                    |
| 38            |           |                 |         |          | SB2-23-39.5 |  |                    |
| 39            |           |                 |         |          | SB2-23-41.0 | non plastic, moist to wet  |                    |
| 40            |           |                 |         |          |             |  |                    |
| 41            |           |                 |         |          |             |  |                    |
| 42            |           |                 |         |          |             | Boring terminated at the capillary fringe - 42.5 ft.   |                    |
| 43            |           |                 |         |          |             |  |                    |
| 44            |           |                 |         |          |             |  |                    |
| 45            |           |                 |         |          |             |  |                    |
| 46            |           |                 |         |          |             |  |                    |
| 47            |           |                 |         |          |             |  |                    |
| 48            |           |                 |         |          |             |  |                    |
| 49            |           |                 |         |          |             |  |                    |
| 50            |           |                 |         |          |             |  |                    |
| 51            |           |                 |         |          |             |  |                    |
| 52            |           |                 |         |          |             |  |                    |
| 53            |           |                 |         |          |             |  |                    |
| 54            |           |                 |         |          |             |  |                    |
| 55            |           |                 |         |          |             |  |                    |
| 56            |           |                 |         |          |             |  |                    |
| 57            |           |                 |         |          |             |  |                    |
| 58            |           |                 |         |          |             |  |                    |
| 59            |           |                 |         |          |             |  |                    |
| 60            |           |                 |         |          |             |  |                    |
| 61            |           |                 |         |          |             |  |                    |
| 62            |           |                 |         |          |             |  |                    |
| 63            |           |                 |         |          |             |  |                    |
| 64            |           |                 |         |          |             |  |                    |
| 65            |           |                 |         |          |             |  |                    |
| 66            |           |                 |         |          |             |  |                    |
| 67            |           |                 |         |          |             |  |                    |

COMPLETION DEPTH: 42.5 ft.  
 DEPTH TO WATER

First Encountered (☉): 42.5 ft.  
 At End of Drilling (☉): None

BACKFILLED WITH: Bentonite Chips

DRILLING DATE: April 1, 1999

DRILLING METHOD: Hollow Stem  
 DRILLED BY: Gregg Drilling  
 LOGGED BY: DJ. Poehls  
 CHECKED BY: D. Gerry

The log and data presented are a simplification of actual condition encountered at the time of probing at the probed locations. Subsurface conditions may differ at other locations and with the passage of time.

**LOG OF SOIL BORING SB2-23**  
**Kerr-McGee Chemical LLC**  
**Henderson, Nevada Facility**



| ELEVATION, ft | DEPTH, ft | MATERIAL SYMBOL | SAMPLES BLOWS/FT | SAMPLE NO.  | LOCATION: South of P-2 pond<br>SURFACE EL: Not Surveyed<br>MATERIAL DESCRIPTIONS                      | PID READING (PPMV) |
|---------------|-----------|-----------------|------------------|-------------|---|--------------------|
| 1             | 2         |                 |                  |             | Hand Augured to 5', No samples collected  |                    |
| 3             | 4         |                 |                  |             |   |                    |
| 5             | 6         |                 |                  |             |   |                    |
| 7             | 8         |                 |                  | SB2-24-6.5  | Gravelly SAND (SW): Moderately graded very fine to medium grained sand, fine to medium grained gravel |                    |
| 9             | 10        |                 |                  | SB2-24-8.0  |   |                    |
| 11            | 12        |                 |                  | SB2-24-9.5  | Silty SAND (SM): Poorly graded, very fine grained sand  |                    |
| 13            | 14        |                 |                  | SB2-24-11.0 | Gravelly silty SAND (SM): Fine grained gravel   |                    |
| 15            | 16        |                 |                  | SB2-24-12.5 |   |                    |
| 17            | 18        |                 |                  | SB2-24-14.0 | gravel-fine to medium grained   |                    |
| 19            | 20        |                 |                  | SB2-24-15.5 |   |                    |
| 21            | 22        |                 |                  | SB2-24-17.0 | Gravelly SAND (SP): Very poorly graded, very fine grained sand  |                    |
| 23            | 24        |                 |                  | SB2-24-18.5 |   |                    |
| 25            | 26        |                 |                  | SB2-24-20.0 | as above with silt  |                    |
| 27            | 28        |                 |                  | SB2-24-21.5 | Sandy GRAVEL (GP): Fine to medium grained angular gravel  |                    |
| 29            | 30        |                 |                  | SB2-24-23.0 |   |                    |
| 31            | 32        |                 |                  | SB2-24-24.5 | trace silt  |                    |
| 33            | 34        |                 |                  | SB2-24-26.0 | Gravelly SAND (SW): Very well graded sand, trace silt, black/brown                                    |                    |
| 35            | 36        |                 |                  | SB2-24-27.5 |   |                    |
| 37            | 38        |                 |                  | SB2-24-29.0 | Silty SAND (SM): Very poorly graded fine grained sand   |                    |
| 39            | 40        |                 |                  | SB2-24-30.5 |   |                    |
| 41            | 42        |                 |                  | SB2-24-32.0 | Sandy SILT (ML): Poorly graded very fine grained sand   |                    |

COMPLETION DEPTH: 42.5 ft.

DEPTH TO WATER

First Encountered (☒): 42.5 ft.

At End of Drilling (☒): None

BACKFILLED WITH: Bentonite Chips

DRILLING DATE: April 1, 1999

DRILLING METHOD: Hollow Stem

DRILLED BY: Gregg Drilling

LOGGED BY: DJ. Poehls

CHECKED BY: D. Gerry

The log and data presented are a simplification of actual condition encountered at the time of probing at the probed locations. Subsurface conditions may differ at other locations and with the passage of time.

**LOG OF SOIL BORING SB2-24**  
**Kerr-McGee Chemical LLC**  
**Henderson, Nevada Facility**

| ELEVATION, ft | DEPTH, ft | MATERIAL SYMBOL | SAMPLES | BLOWS/FT | SAMPLE NO.  | LOCATION: South of P-2 Pond<br>SURFACE EL: Not Surveyed<br>MATERIAL DESCRIPTIONS | PID READING (PPMV) |
|---------------|-----------|-----------------|---------|----------|-------------|--|--------------------|
| 35            |           |                 |         |          | SB2-24-35.0 | Gravelly SILT (ML):  |                    |
| 36            |           |                 |         |          | SB2-24-36.5 |  |                    |
| 37            |           |                 |         |          | SB2-24-38.0 | Sandy SILT (ML): Layered caliche, very poorly graded, very fine sand, wet        |                    |
| 38            |           |                 |         |          | SB2-24-39.5 |  |                    |
| 39            |           |                 |         |          | SB2-24-39.5 | SILT (ML): Trace clay, holds water   |                    |
| 40            |           |                 |         |          | SB2-24-41.0 |  |                    |
| 41            |           |                 |         |          |             |  |                    |
| 42            |           |                 |         |          |             |  |                    |
| 43            |           |                 |         |          |             | Boring terminated at the capillary fringe - 42.5 ft.                             |                    |
| 44            |           |                 |         |          |             |  |                    |
| 45            |           |                 |         |          |             |  |                    |
| 46            |           |                 |         |          |             |  |                    |
| 47            |           |                 |         |          |             |  |                    |
| 48            |           |                 |         |          |             |  |                    |
| 49            |           |                 |         |          |             |  |                    |
| 50            |           |                 |         |          |             |  |                    |
| 51            |           |                 |         |          |             |  |                    |
| 52            |           |                 |         |          |             |  |                    |
| 53            |           |                 |         |          |             |  |                    |
| 54            |           |                 |         |          |             |  |                    |
| 55            |           |                 |         |          |             |  |                    |
| 56            |           |                 |         |          |             |  |                    |
| 57            |           |                 |         |          |             |  |                    |
| 58            |           |                 |         |          |             |  |                    |
| 59            |           |                 |         |          |             |  |                    |
| 60            |           |                 |         |          |             |  |                    |
| 61            |           |                 |         |          |             |  |                    |
| 62            |           |                 |         |          |             |  |                    |
| 63            |           |                 |         |          |             |  |                    |
| 64            |           |                 |         |          |             |  |                    |
| 65            |           |                 |         |          |             |  |                    |
| 66            |           |                 |         |          |             |  |                    |
| 67            |           |                 |         |          |             |  |                    |

COMPLETION DEPTH: 42.5 ft.

DEPTH TO WATER

First Encountered (▽): 42.5 ft.

At End of Drilling (▽): None

BACKFILLED WITH: Bentonite Chips

DRILLING DATE: April 1, 1999

DRILLING METHOD: Hollow Stem

DRILLED BY: Gregg Drilling

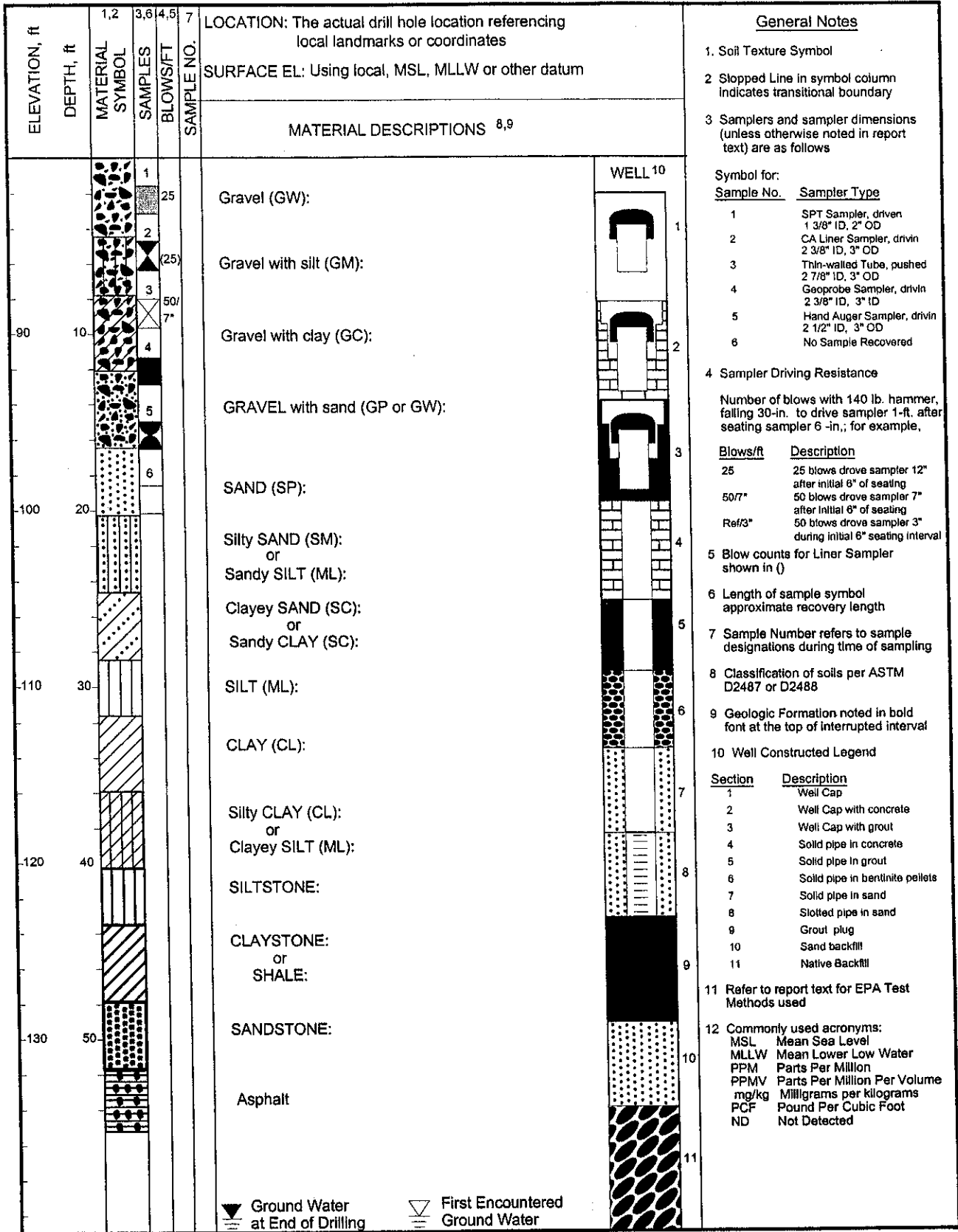
LOGGED BY: DJ. Poehls

CHECKED BY: D. Gerry

The log and data presented are a simplification of actual condition encountered at the time of probing at the probed locations. Subsurface conditions may differ at other locations and with the passage of time.

**LOG OF SOIL BORING SB2-24**  
**Kerr-McGee Chemical LLC**  
**Henderson, Nevada Facility**

G:\DWG\4020004\SB2-24A



**KEY TO TERMS AND SYMBOLS USED ON LOGS**

**Kerr-McGee Chemical LLC  
Henderson, Nevada Facility**