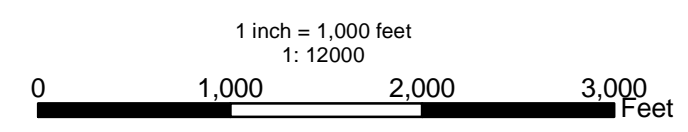


**PLATE: 1
SITE PLAN AND TOPOGRAPHY**

KERR-McGEE CHEMICAL LLC
HENDERSON, NEVADA

- | | | | |
|---|-----------------------------------|---|------------------------|
| • | MONITOR WELL | ■ | LAND OWNERSHIP |
| • | RECOVERY WELL | ■ | BMI |
| • | SOIL BORING / P&A WELLS | ■ | CHEMSTAR |
| □ | PROPERTY PARCELS | ■ | KERR-McGEE |
| — | ELEVATION CONTOUR (C.I. = 5 FEET) | ■ | PIONEER |
| — | RAILROADS | ■ | TIMET |
| — | MAJOR ROADS | — | A — A' LINE OF SECTION |
| □ | BUILDINGS | | |
| ★ | SEEP PUMPING STATION | | |
| — | BARRIER WALL | | |



FEBRUARY 2005

NEVADA EAST (NAD 83)

Plate_1_Location_Map.mxd

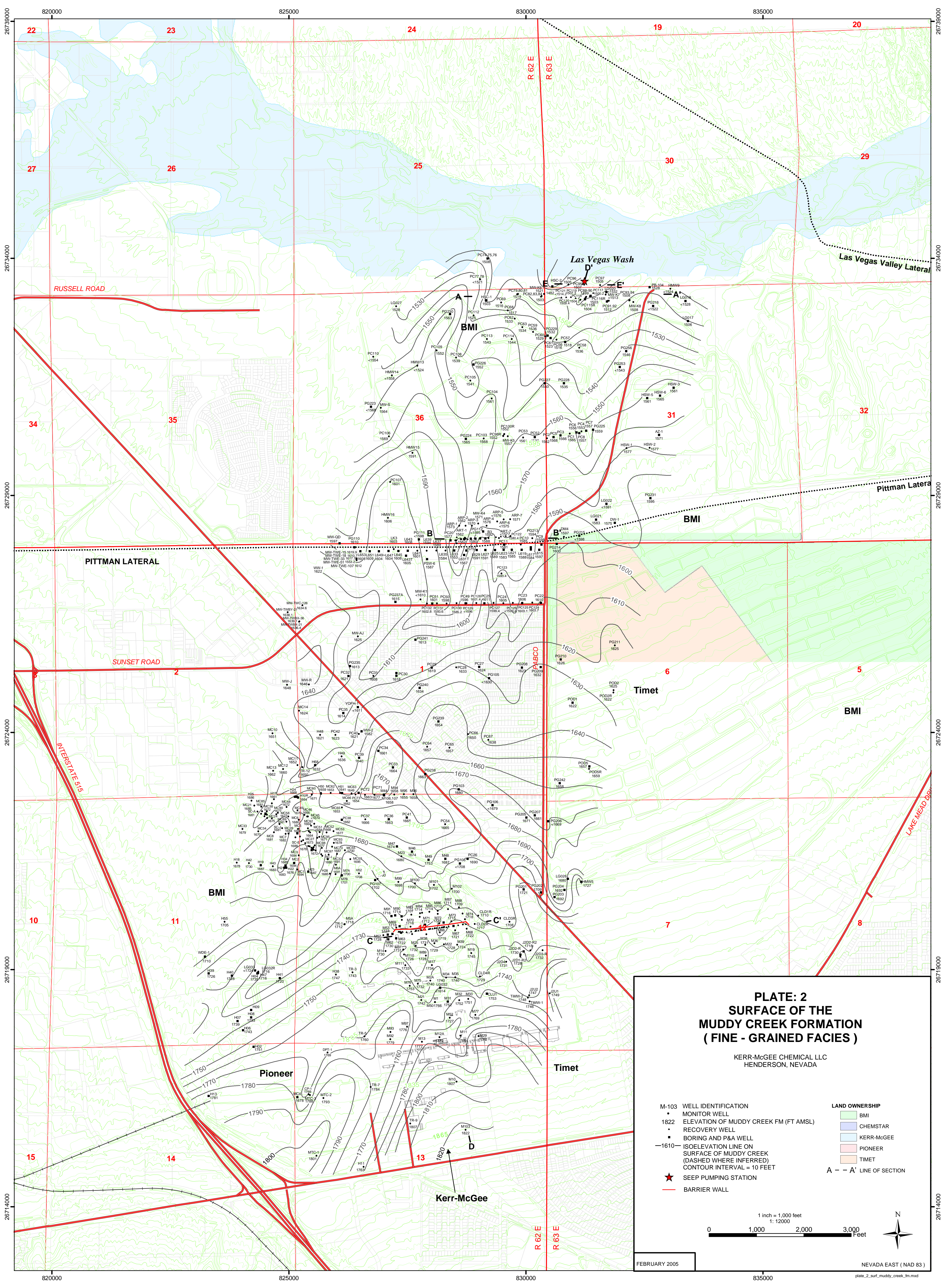
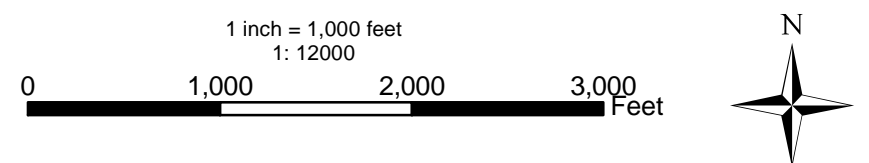


PLATE: 2
SURFACE OF THE
MUDDY CREEK FORMATION
(FINE - GRAINED FACIES)

KERR-McGEE CHEMICAL LLC
 HENDERSON, NEVADA

- | | | |
|--------|--|--------------------------|
| M-103 | WELL IDENTIFICATION | LAND OWNERSHIP |
| • | MONITOR WELL | BMI |
| 1822 | ELEVATION OF MUDDY CREEK FM (FT AMSL) | CHEMSTAR |
| ▲ | RECOVERY WELL | KERR-McGEE |
| ■ | BORING AND P&A WELL | PIONEER |
| -1610- | ISOELEVATION LINE ON SURFACE OF MUDDY CREEK (DASHED WHERE INFERRED) CONTOUR INTERVAL = 10 FEET | TIMET |
| ★ | SEEP PUMPING STATION | A - - A' LINE OF SECTION |
| — | BARRIER WALL | |



FEBRUARY 2005

NEVADA EAST (NAD 83)

WEST
B

EAST
B'

L641 (projected) | L639 (projected) | L637 (projected) | L635 (projected) | PC20 | PC19 | PC55 | PC18 | PC17 | PC16 | PC15 | PC14 | PC13 | B6 | B5 | PC12 | B8(projected) | PC11(projected) | PC-122 | PC10(projected)

ART-1 (projected) | ART-2 (projected) | ART-3 | ART-4 | ART-5 | ART-6 | ART-7

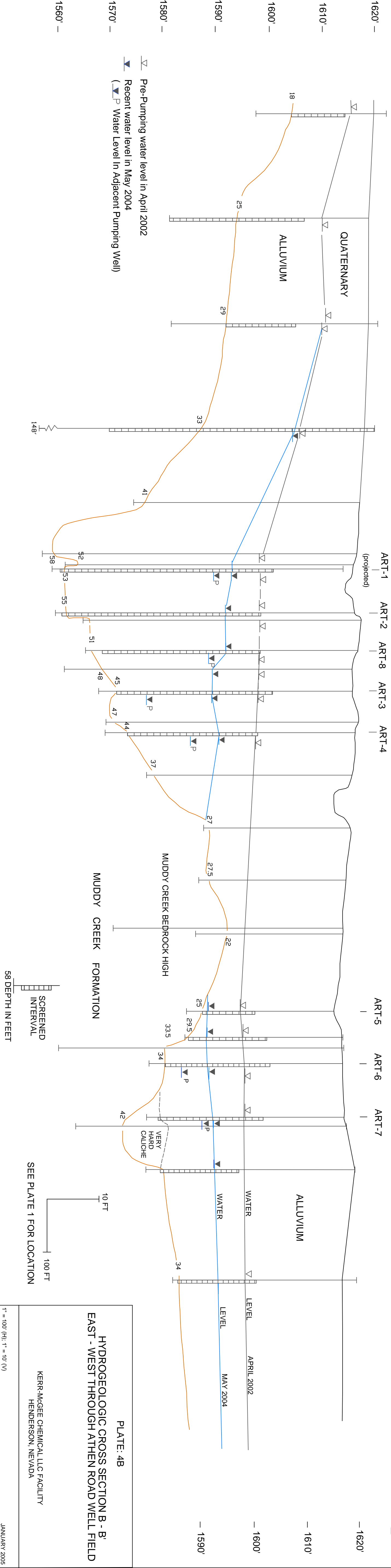
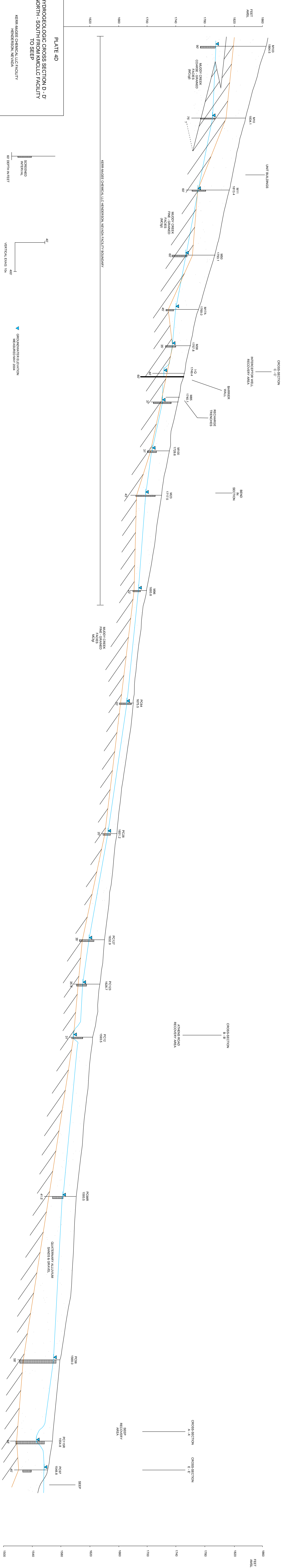


PLATE: 4B
 HYDROGEOLOGIC CROSS SECTION B - B'
 EAST - WEST THROUGH ATHEN ROAD WELL FIELD
 KERR-MCGEE CHEMICAL, LLC FACILITY
 HENDERSON, NEVADA
 JANUARY 2005
 1" = 100' (H); 1" = 10' (V)
 plate_4b_hydrogeological_X_section_B_B.dwg

D
SOUTH



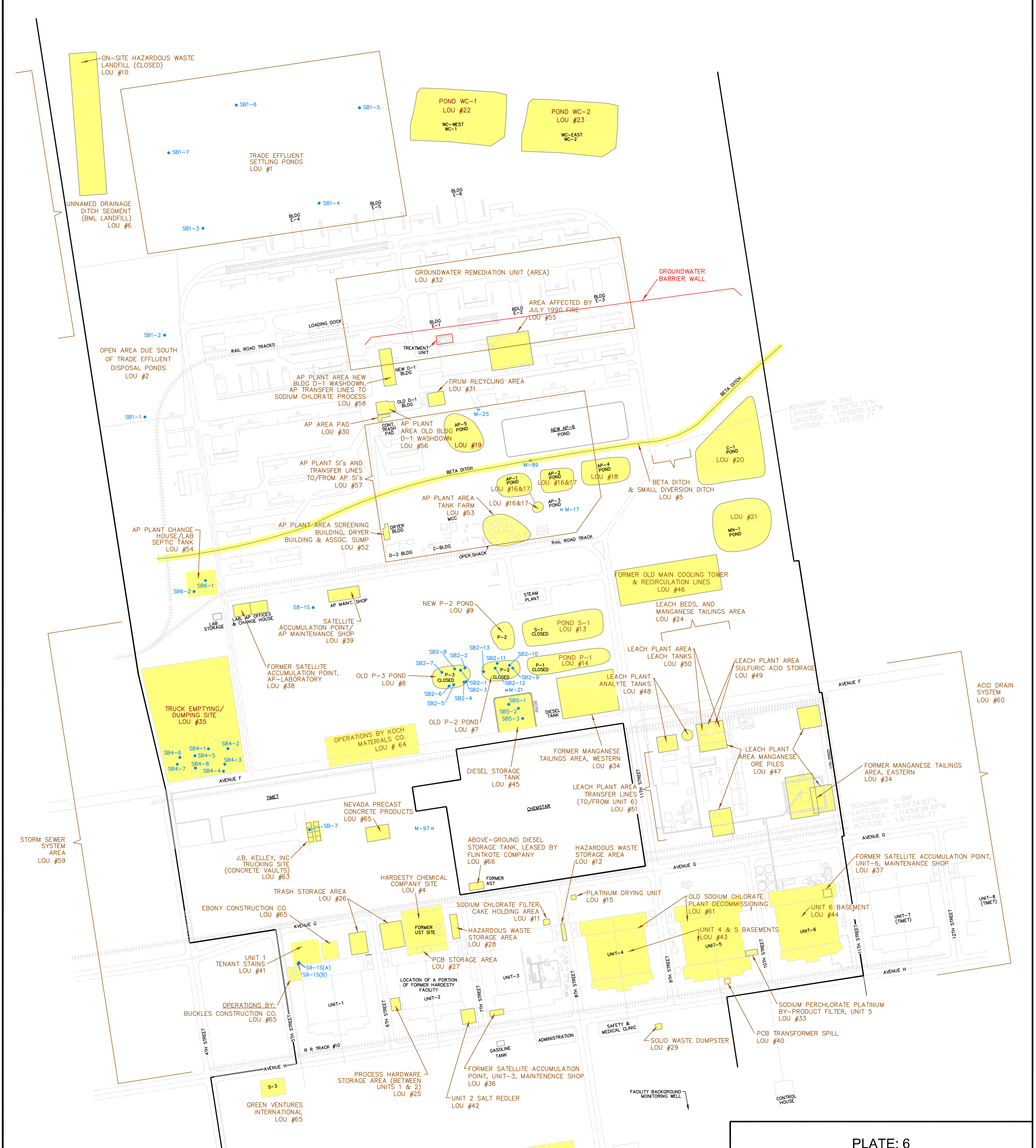
BMI COMMON AREA DISPOSAL
(UPPER & LOWER BMI PONDS)

(NE CORNER OF PROPERTY)

OPERATIONS BY:
DELBERT MADSEN & ESTATE OF
DELBERT MADSEN. (2 ACRES)
LOU #67

SOUTHERN NEVADA AUTO PARTS (SNAP)
AREA (10 ACRES)
LOU #68

DILLON POTTER SITE (2 ACRES)
LOU #69



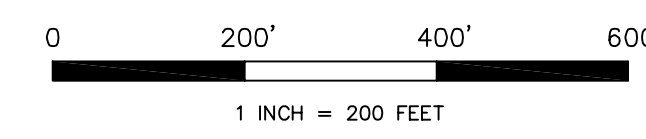
BENCHMARK - BM2
LATITUDE - 36°02'50.35"N
LONGITUDE - 113°00'01.62"W
ALTITUDE - 1,765.220 FT

BENCHMARK - BM1
LATITUDE - 36°02'34.83"N
LONGITUDE - 113°59'58.45"W
ALTITUDE - 1,812.660 FT

PLATE: 6 KERR-McGEE SOURCE AREAS IDENTIFIED IN THE LOU

KERR-McGEE CHEMICAL LLC FACILITY
HENDERSON, NEVADA

- SB6-1 • SOIL SAMPLING LOCATION WITH DESIGNATION
- M-10 • MONITORING WELL LOCATION WITH DESIGNATION
- KMCC PROPERTY BOUNDARY
- RAILROAD TRACKS
- BETA DITCH
- LOU #19 ITEMS IDENTIFIED BY NEVADA DIVISION OF ENVIRONMENTAL PROTECTION IN THE 1994 LETTER OF UNDERSTANDING (LOU)
- [NOT SHOWN] LOU #3 - AIR POLLUTION EMISSIONS ASSOCIATED w/ INDUSTRIAL PROCESSES
- SI SURFACE IMPOUNDMENT



JANUARY 2005

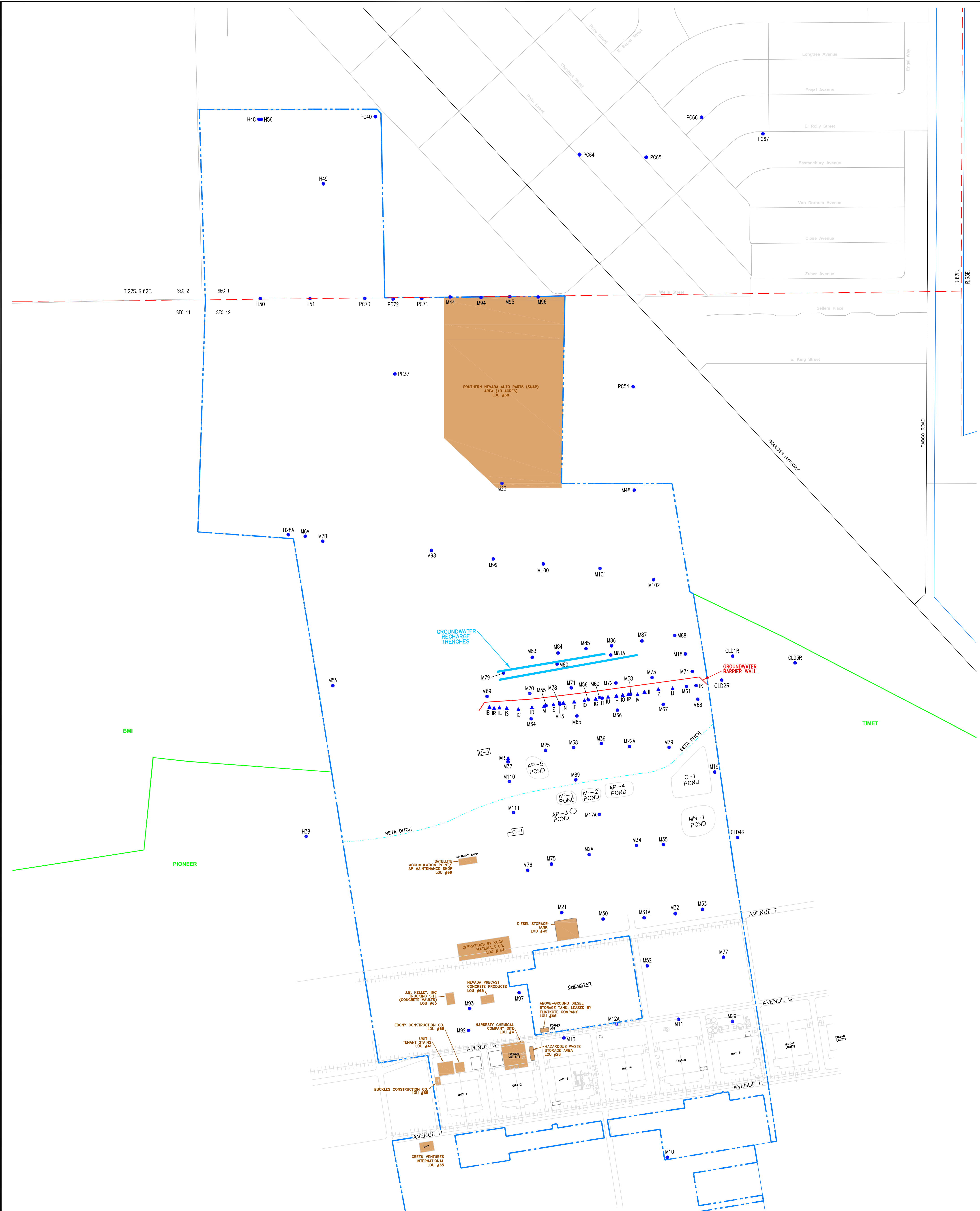
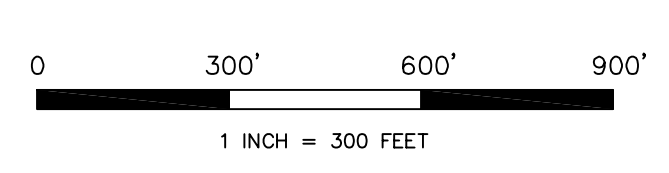


PLATE: 14
PETROLEUM HYDROCARBON
POTENTIAL SOURCE AREAS

KERR-McGEE CHEMICAL LLC FACILITY
 HENDERSON, NEVADA

- GROUNDWATER MONITOR WELL
WELL IDENTIFICATION
- RECOVERY WELL
- KERR-McGEE PROPERTY BOUNDARY
- NEIGHBORING PROPERTY LINES
- BETA DITCH
- RAILROAD TRACKS
- POTENTIAL SOURCE AREA



JANUARY 2005

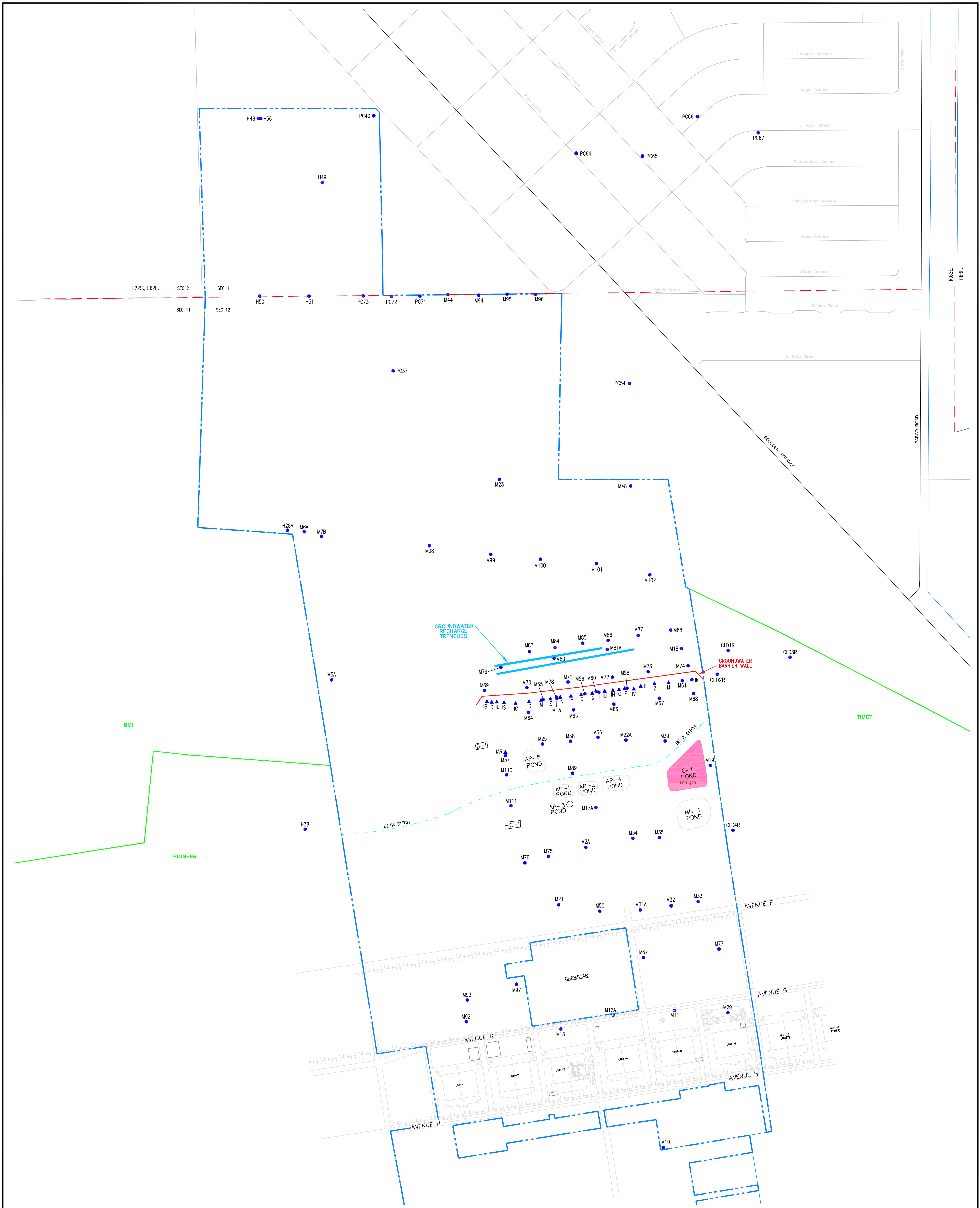


PLATE: 15
BORON POTENTIAL
SOURCE AREA

KERR-McGEE CHEMICAL LLC FACILITY
 HENDERSON, NEVADA

- GROUNDWATER MONITOR WELL
- ▲ WELL IDENTIFICATION
- ▲ RECOVERY WELL
- KERR-McGEE PROPERTY BOUNDARY
- NEIGHBORING PROPERTY LINES
- BETA DITCH
- RAILROAD TRACKS
- POTENTIAL BORON SOURCE AREA

0 300' 600' 900'

1 INCH = 300 FEET

JANUARY 2005



PLATE: 16
MISCELLANEOUS POTENTIAL SOURCE AREAS

KERR-McGEE CHEMICAL LLC FACILITY
 HENDERSON, NEVADA

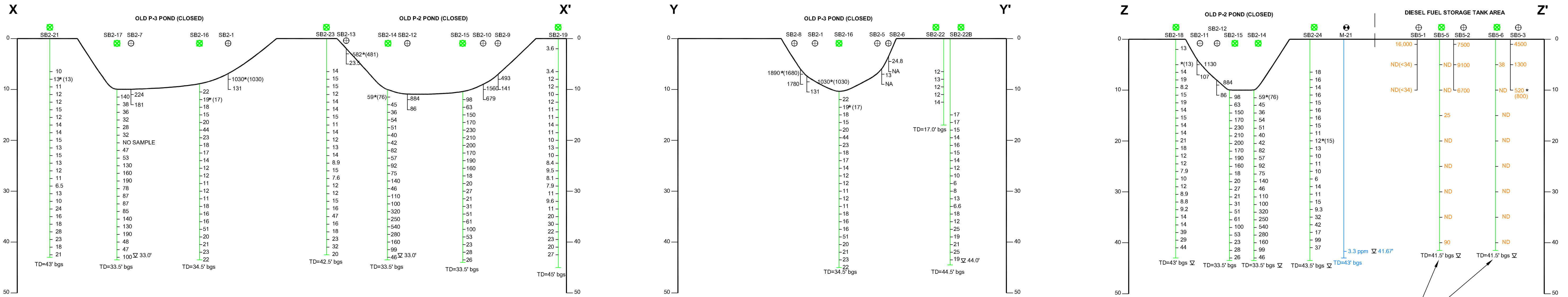
- GROUNDWATER MONITOR WELL
- ▲ WELL IDENTIFICATION
- ▲ RECOVERY WELL
- KERR-McGEE PROPERTY BOUNDARY
- NEIGHBORING PROPERTY LINES
- BETA DITCH
- RAILROAD TRACKS
- [NOT SHOWN] LOU #3 - AIR POLLUTION EMISSIONS ASSOCIATED W/ INDUSTRIAL PROCESSES
- POTENTIAL MISCELLANEOUS SOURCE AREA (HATCHED WHERE AREA IS LESS DEFINED)

0 300' 600' 900'
 1 INCH = 300 FEET

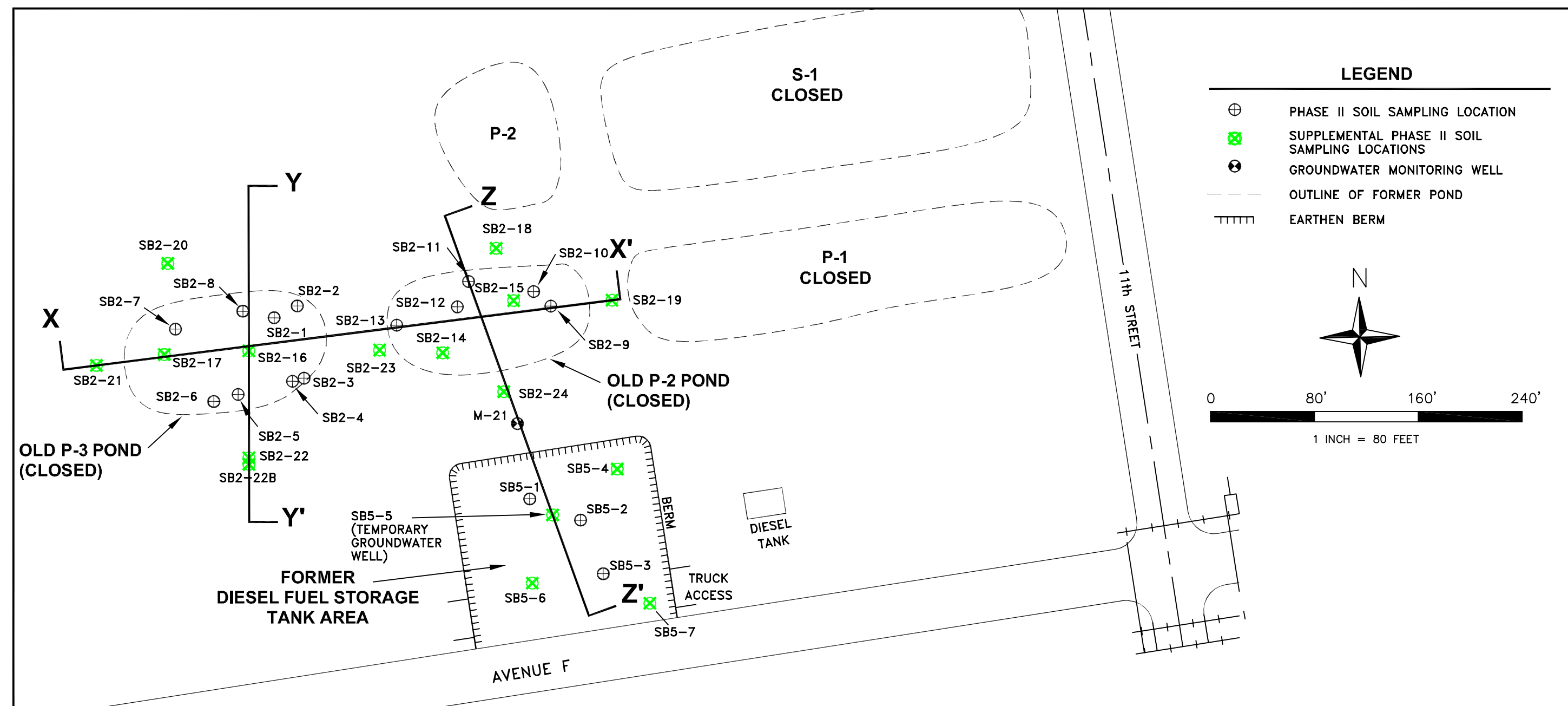
N

JANUARY 2005

Miscellaneous Potential Source Areas.dwg



SAMPLED FOR BTEX, TPH AND PAH'S (METHODS 8015, 8020 AND 8270 RESPECTIVELY). TPH VALUES ARE SHOWN. ALL BTEX AND PAH'S WERE NON-DETECT (<5 mg/kg AND <0.5 µg/kg, RESPECTIVELY).



LEGEND

- ⊕ PHASE II SOIL SAMPLING LOCATION
- ⊗ SUPPLEMENTAL PHASE II SOIL SAMPLING LOCATIONS
- ⊖ GROUNDWATER MONITORING WELL
- OUTLINE OF FORMER POND
- TTTTTT EARTHEN BERM

N

0 80' 160' 240'

1 INCH = 80 FEET

CROSS-SECTION LOCATION MAP AREA

ts\04020 - Kerr-McGee\023 - ECA Henderson, NV\figures\Figure 1 Site Location m

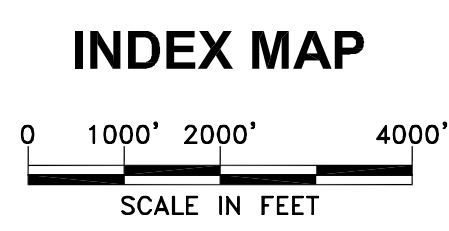


PLATE: 17

CROSS SECTIONS OF OLD P-2, P-3 PONDS AND FORMER DIESEL FUEL STORAGE TANK AREA

KERR-McGEE CHEMICAL LLC FACILITY
HENDERSON, NEVADA

- SB2-21 DEEP BORING, HOLLOW STEM AUGER (DRILLED 1999)
- SB2-7 SHALLOW, HAND AUGERED (DRILLED 1997)
- M-21 GROUNDWATER MONITORING WELL (DRILLED 1983)
- 10 TOTAL CHROMIUM CONCENTRATION (n mg/kg) METHOD 6010
- 3.3 ppm TOTAL PETROLEUM HYDROCARBON (TPH) CONCENTRATION (n mg/kg). METHOD 8015 FOR DEEP BORINGS AND 8015 M-D FOR SHALLOW HAND AUGERING.
- 3.3 ppm GROUNDWATER SAMPLE TESTED FOR TOTAL CHROMIUM
- NA NOT ANALYZED
- ND NON DETECT FOR ALL TPH RANGES (<10 mg/kg)
- * DUPLICATE SAMPLE TAKEN, DUPLICATE RESULT SHOWN IN PARENTHESIS
- ∇ 33.0' GROUNDWATER LEVEL FIRST MEASURED
- bgs BELOW GROUND SURFACE

JANUARY 2005

x-sections.dwg