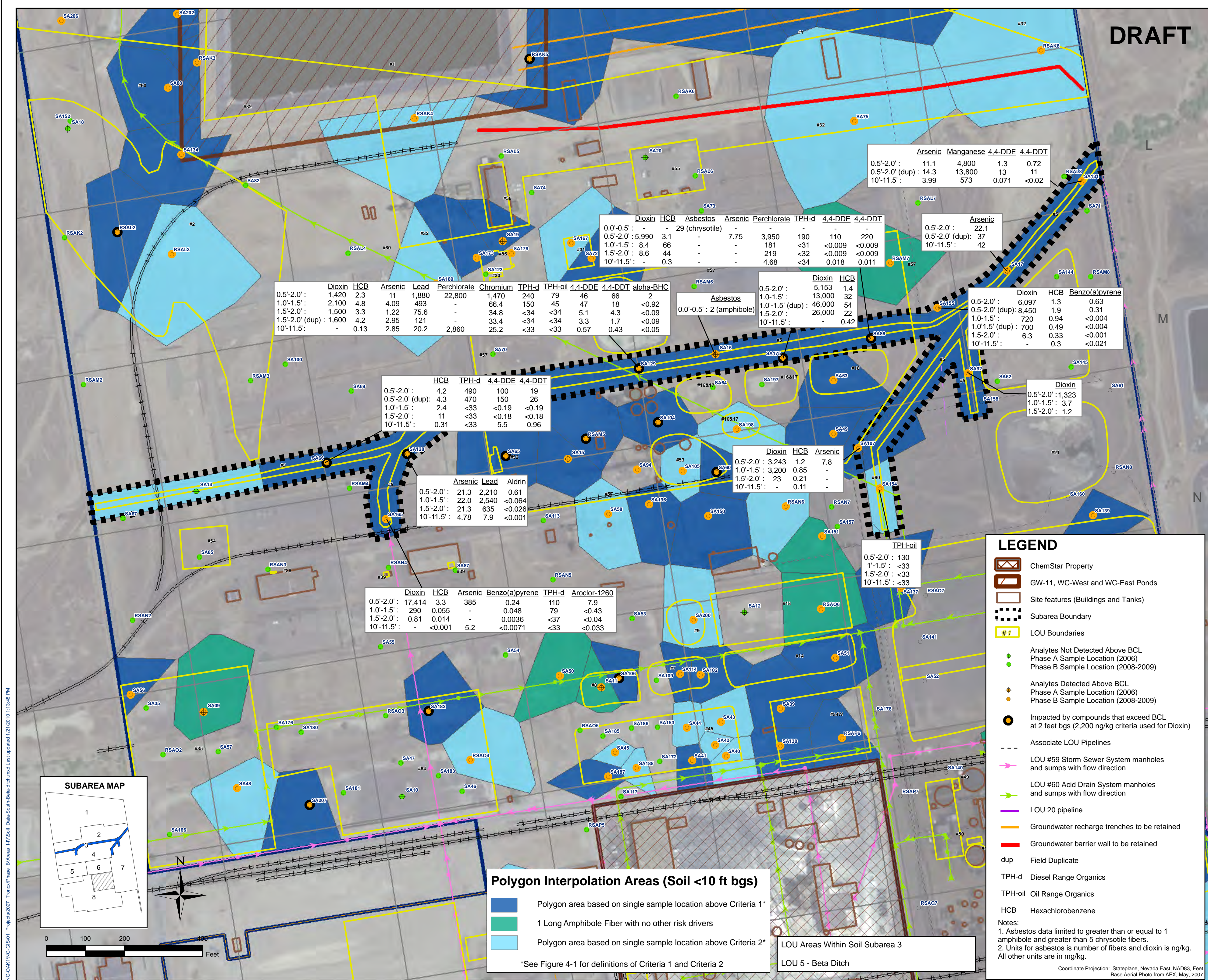


DRAFT

N:\G-04\1\NG-01\Projects\2027_TronoxPhase_B\Areas_A\Soil_Data\Soil-Data-Beta-Ditch.mxd Last updated 1/21/2010 11:38:48 PM



Depth	Dioxin	HCb	Arsenic	Lead	Perchlorate	Chromium	TPH-d	TPH-oil	4,4-DDE	4,4-DDT	alpha-BHC
0.5'-2.0'	1,420	2.3	11	1,880	22,800	1,470	240	79	46	66	2
1.0'-1.5'	2,100	4.8	4.09	493	-	66.4	150	45	47	18	<0.92
1.5'-2.0'	1,500	3.3	1.22	75.6	-	34.8	<34	<34	5.1	4.3	<0.09
1.5'-2.0' (dup)	1,600	4.2	2.95	121	-	33.4	<34	<34	3.3	1.7	<0.09
10'-11.5'	-	0.13	2.85	20.2	2,860	25.2	<33	<33	0.57	0.43	<0.05

Depth	Dioxin	HCb	Asbestos	Arsenic	Perchlorate	TPH-d	4,4-DDE	4,4-DDT
0.0'-0.5'	-	-	29 (chrysotile)	-	-	-	-	-
0.5'-2.0'	5,990	3.1	-	7.75	3,950	190	110	220
1.0'-1.5'	8.4	66	-	-	181	<31	<0.009	<0.009
1.5'-2.0'	8.6	44	-	-	219	<32	<0.009	<0.009
10'-11.5'	-	0.3	-	-	4.68	<34	0.018	0.011

Depth	Arsenic	Manganese	4,4-DDE	4,4-DDT
0.5'-2.0'	11.1	4,800	1.3	0.72
0.5'-2.0' (dup)	14.3	13,800	13	11
10'-11.5'	3.99	573	0.071	<0.02

Depth	Arsenic
0.5'-2.0'	22.1
0.5'-2.0' (dup)	37
10'-11.5'	42

Depth	Dioxin	HCb	Benzo(a)pyrene
0.5'-2.0'	6,097	1.3	0.63
0.5'-2.0' (dup)	8,450	1.9	0.31
1.0'-1.5'	720	0.94	<0.004
1.0'-1.5' (dup)	700	0.49	<0.004
1.5'-2.0'	6.3	0.33	<0.001
10'-11.5'	-	0.3	<0.021

Depth	HCb	TPH-d	4,4-DDE	4,4-DDT
0.5'-2.0'	4.2	490	100	19
0.5'-2.0' (dup)	4.3	470	150	26
1.0'-1.5'	2.4	<33	<0.19	<0.19
1.5'-2.0'	11	<33	<0.18	<0.18
10'-11.5'	0.31	<33	5.5	0.96

Depth	Arsenic	Lead	Aldrin
0.5'-2.0'	21.3	2,210	0.61
1.0'-1.5'	22.0	2,540	<0.064
1.5'-2.0'	21.3	635	<0.026
10'-11.5'	4.78	7.9	<0.001

Depth	Dioxin	HCb	Arsenic
0.5'-2.0'	3,243	1.2	7.8
1.0'-1.5'	3,200	0.85	-
1.5'-2.0'	23	0.21	-
10'-11.5'	-	0.11	-

Depth	Dioxin	HCb	Arsenic	Benzo(a)pyrene	TPH-d	Aroclor-1260
0.5'-2.0'	17,414	3.3	385	0.24	110	7.9
1.0'-1.5'	290	0.055	-	0.048	79	<0.43
1.5'-2.0'	0.81	0.014	-	0.0036	<37	<0.04
10'-11.5'	-	<0.001	5.2	<0.0071	<33	<0.033

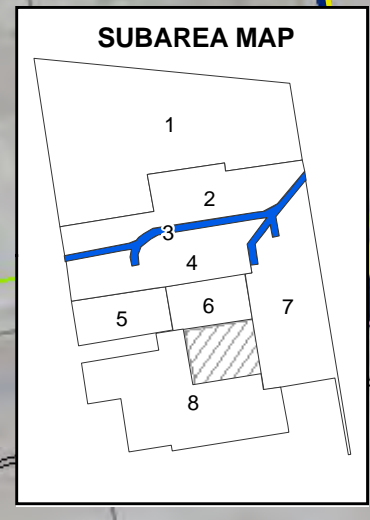
Depth	TPH-oil
0.5'-2.0'	130
1'-1.5'	<33
1.5'-2.0'	<33
10'-11.5'	<33

LEGEND

- ChemStar Property
- GW-11, WC-West and WC-East Ponds
- Site features (Buildings and Tanks)
- Subarea Boundary
- #1 LOU Boundaries
- Analytes Not Detected Above BCL Phase A Sample Location (2006)
- Analytes Not Detected Above BCL Phase B Sample Location (2008-2009)
- Analytes Detected Above BCL Phase A Sample Location (2006)
- Analytes Detected Above BCL Phase B Sample Location (2008-2009)
- Impacted by compounds that exceed BCL at 2 feet bgs (2,200 ng/kg criteria used for Dioxin)
- Associate LOU Pipelines
- LOU #59 Storm Sewer System manholes and sumps with flow direction
- LOU #60 Acid Drain System manholes and sumps with flow direction
- LOU 20 pipeline
- Groundwater recharge trenches to be retained
- Groundwater barrier wall to be retained
- dup Field Duplicate
- TPH-d Diesel Range Organics
- TPH-oil Oil Range Organics
- HCb Hexachlorobenzene

Notes:
 1. Asbestos data limited to greater than or equal to 1 amphibole and greater than 5 chrysotile fibers.
 2. Units for asbestos is number of fibers and dioxin is ng/kg. All other units are in mg/kg.

Coordinate Projection: Stateplane, Nevada East, NAD83, Feet
 Base Aerial Photo from AEX, May, 2007



Polygon Interpolation Areas (Soil <10 ft bgs)

- Polygon area based on single sample location above Criteria 1*
- 1 Long Amphibole Fiber with no other risk drivers
- Polygon area based on single sample location above Criteria 2*

LOU Areas Within Soil Subarea 3
 LOU 5 - Beta Ditch

*See Figure 4-1 for definitions of Criteria 1 and Criteria 2

DESIGNED BY:	NO:	REVISIONS:	DATE:	BY:
NGEM				
DRAWN BY:				
NGEM				
CHECKED BY:				
NGEM				
APPROVED BY:				
NGEM				

SOIL SUBAREA 3 - BETA DITCH

Tronox Facility
Henderson, Nevada

PROJECT NUMBER: 2027.01
 DATE: 01/29/10
 SCALE: AS SHOWN