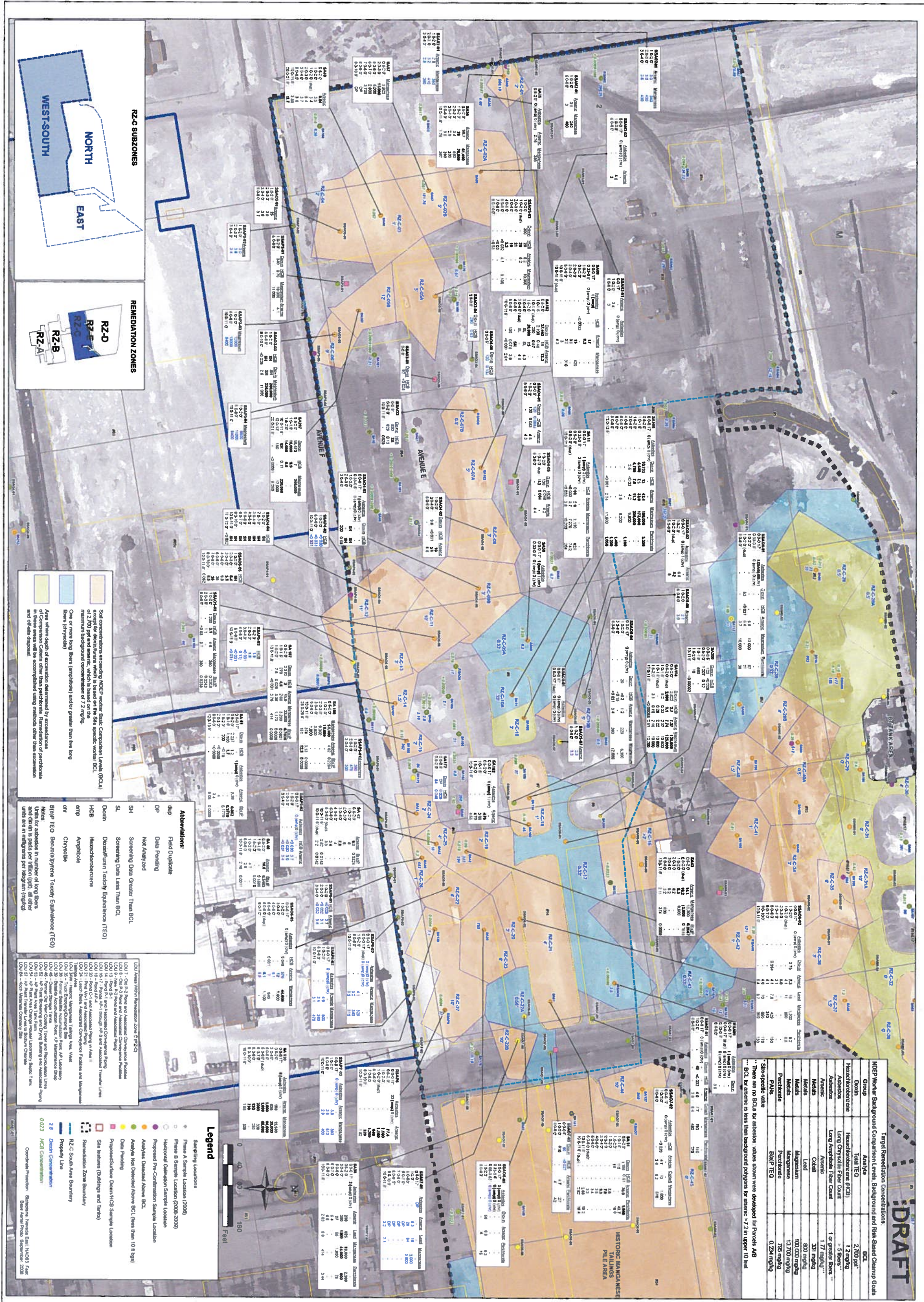


DRAFT

Target Remediation Concentrations

Group	Analite	BCL
Dioxin	Total TEQ	2,800 pg/l
	Hexachlorocyclopentadiene (HxCDD)	1,200 pg/l
Asbestos	Long Chain Sulfate Fiber Count	1 to 3 fibers
	Amphibole Fiber Count	1 to 3 fibers
Metals	Asbestos	1.77 mg/kg
	Cobalt	331 mg/kg
Metals	Lead	800 mg/kg
	Magnesium	100,000 mg/kg
Pesticides	Permethrin	13,700 mg/kg
	Pachlobutrazol	795 mg/kg
PAHs	Benzo(a)pyrene	0.224 mg/kg
	Benzo(a)anthracene	0.224 mg/kg

NOTE: There are no BCLs for asbestos values shown with developed by Patents AIB
 -- BCL for asbestos is less than background polygons for asbestos >7.2 in upper 10 feet



Soil concentrations exceeding NDEP water base, Construction Levels (BCL) except for dioxin/furan which is based on the site specific, wetland BCL, or maximum background concentration of 7.2 mg/kg.

One or more long Bases (Amphibole) and/or greater than five long Bases (Chrysotile).

Anywhere depth of excavation determined by exceedance of Construction Levels other than perfluorinated. Remediation of perfluorinated is based on the site specific, wetland BCL, or maximum background concentration of 7.2 mg/kg.

Abbreviations:

- dup Field Duplicate
- DP Data Pending
- NA Not Analyzed
- SH Screening Data Greater Than BCL
- SL Screening Data Less Than BCL
- Dioxin Dioxin/Furan Toxicity Equivalence (TEQ)
- HCB Hexachlorocyclopentadiene
- amp Amp
- Chrysotile Chrysotile
- RIAP TEQ Benzo(a)pyrene Toxicity Equivalence (TEQ)

Units for asbestos in number of long fibers and clean to point per liter (GPL) all other units are in milligrams per kilogram (mg/kg)

LOU 1 - 0.01 mg/l Total and Associated Compounds

LOU 2 - 0.01 mg/l Total and Associated Compounds

LOU 3 - 0.01 mg/l Total and Associated Compounds

LOU 4 - 0.01 mg/l Total and Associated Compounds

LOU 5 - 0.01 mg/l Total and Associated Compounds

LOU 6 - 0.01 mg/l Total and Associated Compounds

LOU 7 - 0.01 mg/l Total and Associated Compounds

LOU 8 - 0.01 mg/l Total and Associated Compounds

LOU 9 - 0.01 mg/l Total and Associated Compounds

LOU 10 - 0.01 mg/l Total and Associated Compounds

LOU 11 - 0.01 mg/l Total and Associated Compounds

LOU 12 - 0.01 mg/l Total and Associated Compounds

LOU 13 - 0.01 mg/l Total and Associated Compounds

LOU 14 - 0.01 mg/l Total and Associated Compounds

LOU 15 - 0.01 mg/l Total and Associated Compounds

LOU 16 - 0.01 mg/l Total and Associated Compounds

LOU 17 - 0.01 mg/l Total and Associated Compounds

LOU 18 - 0.01 mg/l Total and Associated Compounds

LOU 19 - 0.01 mg/l Total and Associated Compounds

LOU 20 - 0.01 mg/l Total and Associated Compounds

LOU 21 - 0.01 mg/l Total and Associated Compounds

LOU 22 - 0.01 mg/l Total and Associated Compounds

LOU 23 - 0.01 mg/l Total and Associated Compounds

LOU 24 - 0.01 mg/l Total and Associated Compounds

LOU 25 - 0.01 mg/l Total and Associated Compounds

LOU 26 - 0.01 mg/l Total and Associated Compounds

LOU 27 - 0.01 mg/l Total and Associated Compounds

LOU 28 - 0.01 mg/l Total and Associated Compounds

LOU 29 - 0.01 mg/l Total and Associated Compounds

LOU 30 - 0.01 mg/l Total and Associated Compounds

LOU 31 - 0.01 mg/l Total and Associated Compounds

Legend

- Sampling Locations
- Press A Sample Location (2009)
- Press B Sample Location (2009-2009)
- Horizontal Delimitation Sample Location
- Proposed Pre-Construction Sample Location
- Analyses Deleted Above BCL
- Analyses Not Deleted Above BCL (less than 10 x 8 ft)
- Data Pending
- Proposed/Status Down/Not Sample Location
- Site Release (Buildings and Tanks)
- Remediation Zone Boundary
- RZ-C South Area Boundary
- Property Line
- Dioxin Concentration
- HCB Concentration

REMEDATION ZONE C-WEST AND -SOUTH EXCAVATION

RZ-C Excavation Plan
 Tronox LLC
 Henderson, Nevada

SCALE	DATE	PROJECT NUMBER
1 in = 80 ft	10/12/10	2027.01 T90

DESIGNED BY	NO	DESCRIPTION	DATE	BY
NGEM				
DRAWN BY				
OS				
CHECKED BY				
NGEM				
APPROVED BY				
NGEM				

northgate
 environmental management, inc.

TRONOX www.ngem.com