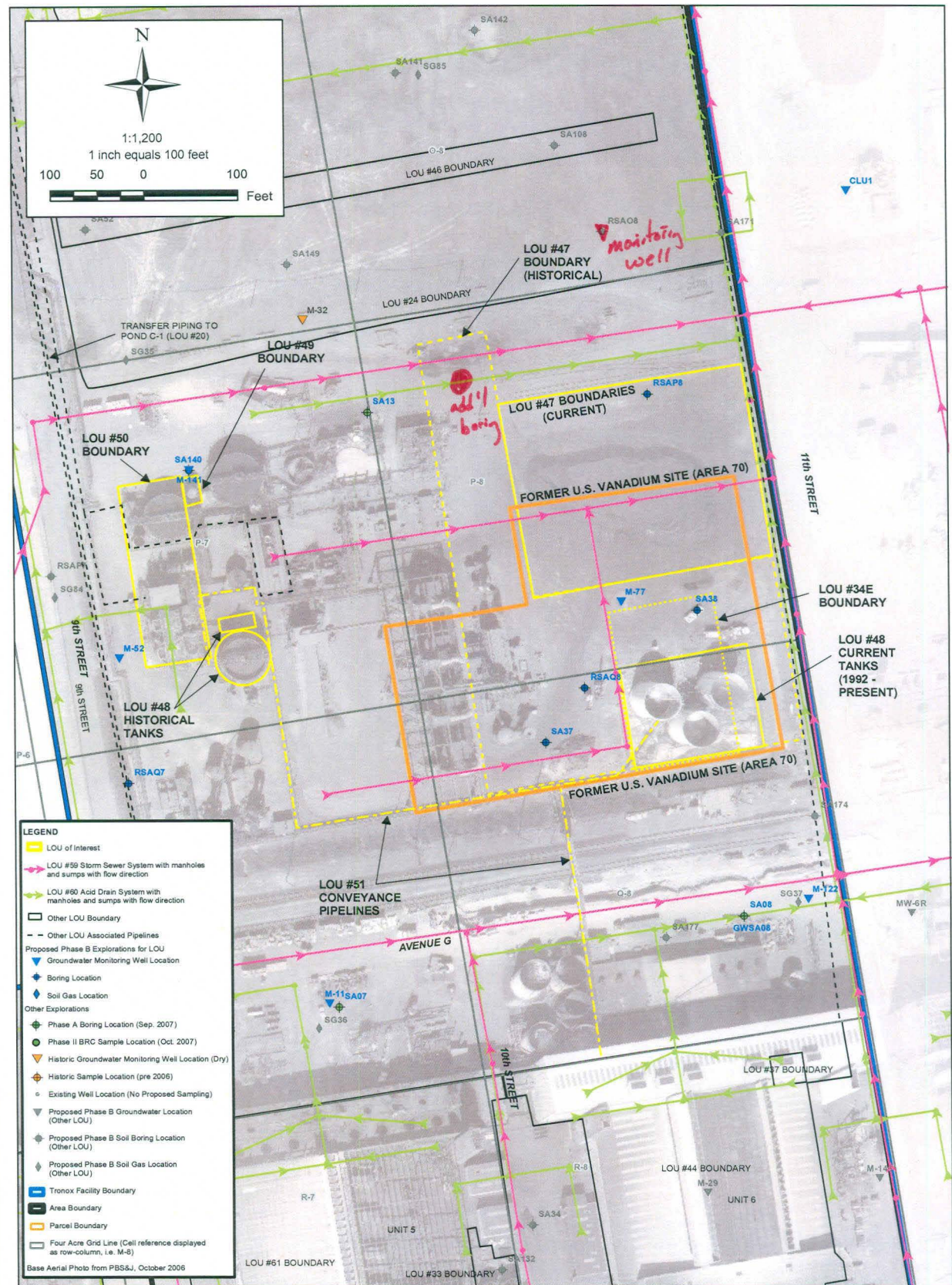


*additional boring located in surface flow from MN TAILINGS Area  
 move SA139 to just north of LOU 24 & convert to monitoring well.*

SHEET NUMBER: X	FIGURE NUMBER: 1	<b>SAMPLE LOCATIONS FOR LOU #24 AND #46                  MN TAILINGS AREA AND                  OLD MAIN COOLING TOWER</b> Phase B Area III Source Area Investigation Tronox Facility Henderson, Nevada		ENSR AECOM ENSR CORPORATION 1220 AVENIDA ACASO CAMARILLO, CALIFORNIA 93012 PHONE: (805) 388-3775 FAX: (805) 388-3577 WEB: HTTP://WWW.ENSR.AECOM.COM	DESIGNED BY: B. Ho DRAWN BY: M. Scop CHECKED BY: C. Schnell APPROVED BY: B. Ho	LOU #24 AND LOU #46
		SCALE: AS SHOWN	DATE: 6/4/2008			



*Additional boring on LOU 60 in northern portion of historical land. Convert RSA08 to monitoring well.*



SHEET NUMBER	1
FIGURE NUMBER	X

<b>SAMPLE LOCATIONS FOR LOUS #34E, #47, #48, #49, #50, #51 AND AREA 70 (FORMER U.S. VANADIUM SITE)</b> Phase B Area III Source Area Investigation Tronox Facility Henderson, Nevada		
SCALE:	DATE:	PROJECT NUMBER:
AS SHOWN	6/3/2008	04020-023-430

**ENSR AECOM**

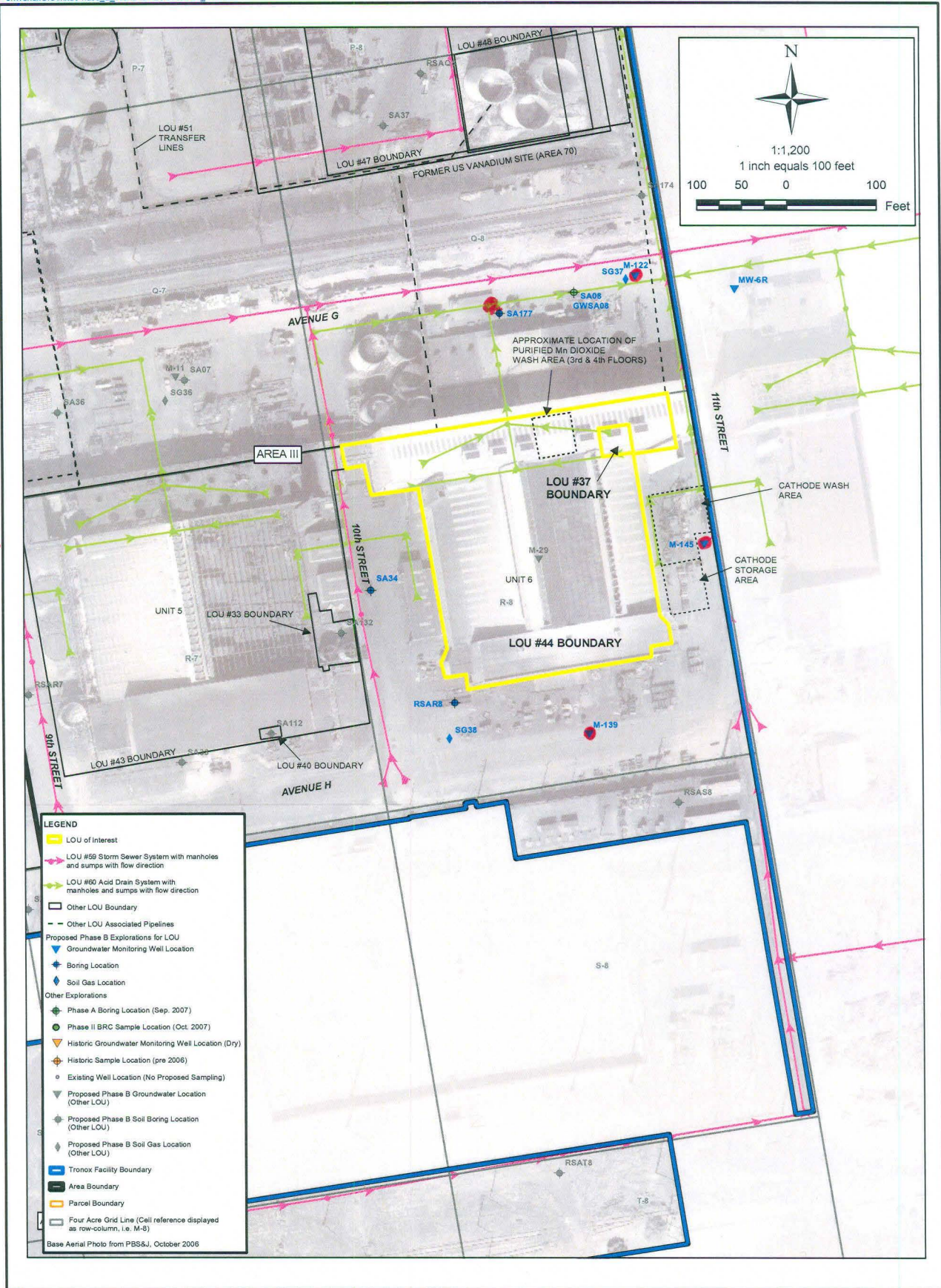
ENSR CORPORATION  
 1220 AVENIDA ACASO  
 CAMARILLO, CALIFORNIA 93012  
 PHONE: (805) 388-3775  
 FAX: (805) 388-3577  
 WEB: [HTTP://WWW.ENSR.AECOM.COM](http://www.ensr.aecom.com)

DESIGNED BY:	B. Ho
DRAWN BY:	M. Scop
CHECKED BY:	C. Schnell
APPROVED BY:	B. Ho





SA177 move to intersection/junction LOU 60.  
Add borings collect samples for M-122, M-145 & M-139



SHEET NUMBER:	X
FIGURE NUMBER:	1

SAMPLE LOCATIONS FOR LOUs #44 & #37 UNIT 6 BASEMENT & FORMER SATELLITE ACCUMULATION POINT - UNIT 6 MAINTENANCE SHOP Phase B Area III Source Area Investigation Tronox Facility, Henderson, Nevada		
SCALE:	DATE:	PROJECT NUMBER:
AS SHOWN	6/4/2008	04020-023-430

ENSR AECOM

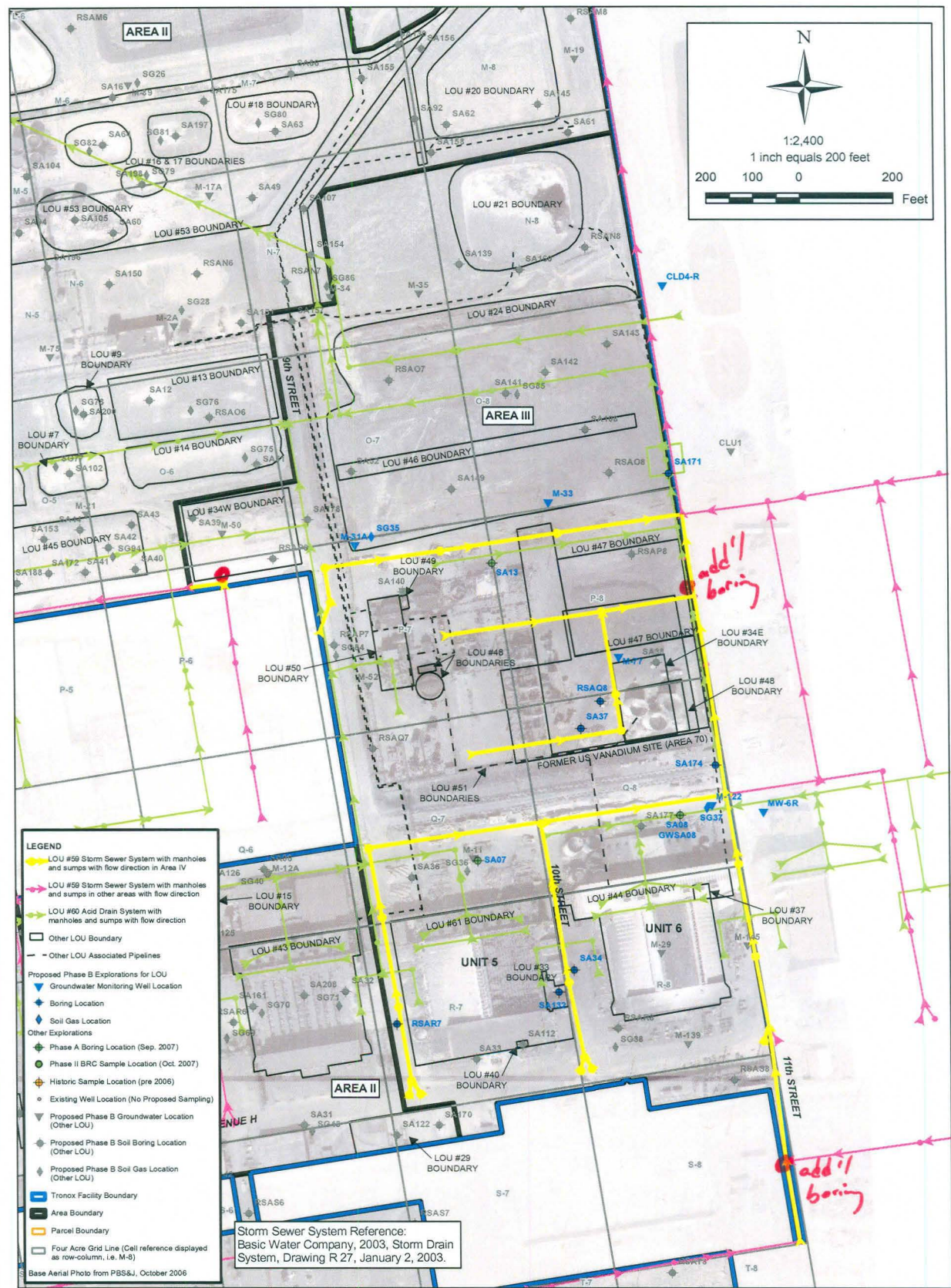
ENSR CORPORATION  
1220 AVENIDA ACASO  
CAMARILLO, CALIFORNIA 93012  
PHONE: (805) 388-3775  
FAX: (805) 388-3577  
WEB: HTTP://WWW.ENSR.AECOM.COM

DESIGNED BY:	B. Ho
DRAWN BY:	M. Scop
CHECKED BY:	G. Hels
APPROVED BY:	B. Ho





• additional boring south of LOU 34W at 90° North of a clean star.  
 • additional boring at junction on east side of LOU #7.  
 • additional boring southeast portion of LOU



**LEGEND**

- LOU #59 Storm Sewer System with manholes and sumps with flow direction in Area IV
- LOU #59 Storm Sewer System with manholes and sumps in other areas with flow direction
- LOU #60 Acid Drain System with manholes and sumps with flow direction
- Other LOU Boundary
- Other LOU Associated Pipelines
- Proposed Phase B Explorations for LOU
  - ▼ Groundwater Monitoring Well Location
  - ◆ Boring Location
  - ◆ Soil Gas Location
- Other Explorations
  - ◆ Phase A Boring Location (Sep. 2007)
  - ◆ Phase II BRC Sample Location (Oct. 2007)
  - ◆ Historic Sample Location (pre 2006)
  - Existing Well Location (No Proposed Sampling)
  - ▼ Proposed Phase B Groundwater Location (Other LOU)
  - ◆ Proposed Phase B Soil Boring Location (Other LOU)
  - ◆ Proposed Phase B Soil Gas Location (Other LOU)
- Tronox Facility Boundary
- Area Boundary
- Parcel Boundary
- Four Acre Grid Line (Call reference displayed as row-column, i.e. M-8)

Storm Sewer System Reference:  
 Basic Water Company, 2003, Storm Drain System, Drawing R 27, January 2, 2003.

Base Aerial Photo from PBSS&J, October 2006

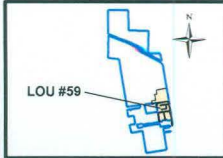
SHEET NUMBER	1
FIGURE NUMBER	X

SAMPLE LOCATIONS FOR LOU #59 IN AREA III STORM DRAIN SYSTEM SEGMENT		
Phase B Area III Source Area Investigation Tronox Facility Henderson, Nevada		
SCALE:	DATE:	PROJECT NUMBER:
AS SHOWN	6/3/2008	04020-023-430

ENSR AECOM

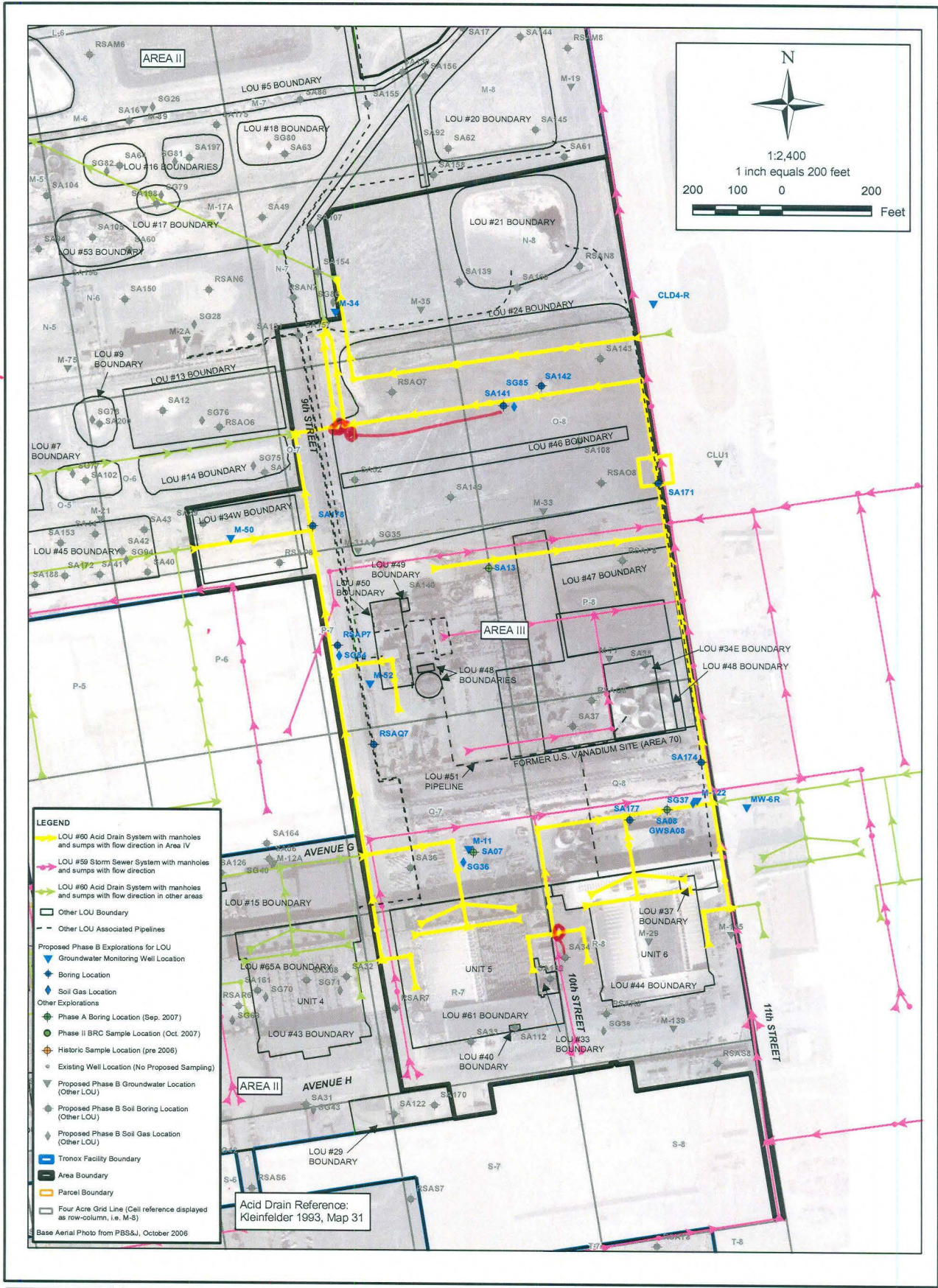
ENSR CORPORATION  
 1220 AVENIDA ACASO  
 CAMARILLO, CALIFORNIA 93012  
 PHONE: (805) 388-3775  
 FAX: (805) 388-3577  
 WEB: HTTP://WWW.ENSR.AECOM.COM

DESIGNED BY:	B. Ho
DRAWN BY:	M. Scop
CHECKED BY:	C. Schnell
APPROVED BY:	B. Ho





move SA141 west to the two legs of Lou60.  
 move SA34 north over Lou60.



**LEGEND**

- Yellow arrow: LOU #60 Acid Drain System with manholes and sumps with flow direction in Area IV
- Pink arrow: LOU #59 Storm Sewer System with manholes and sumps with flow direction
- Green arrow: LOU #60 Acid Drain System with manholes and sumps with flow direction in other areas
- Black line: Other LOU Boundary
- Dashed black line: Other LOU Associated Pipelines
- Blue triangle: Proposed Phase B Explorations for LOU Groundwater Monitoring Well Location
- Blue diamond: Boring Location
- Green diamond: Soil Gas Location
- Green circle: Phase A Boring Location (Sep. 2007)
- Green circle with dot: Phase II BRC Sample Location (Oct. 2007)
- Orange circle with dot: Historic Sample Location (pre 2006)
- Green circle with cross: Existing Well Location (No Proposed Sampling)
- Green triangle: Proposed Phase B Groundwater Location (Other LOU)
- Green diamond: Proposed Phase B Soil Boring Location (Other LOU)
- Green diamond with dot: Proposed Phase B Soil Gas Location (Other LOU)
- Blue line: Tronox Facility Boundary
- Black line: Area Boundary
- Orange line: Parcel Boundary
- Grey box: Four Acre Grid Line (Cell reference displayed as row-column, i.e. M-8)

Base Aerial Photo from PBS&J, October 2006

Acid Drain Reference:  
 Kleinfelder 1993, Map 31

SHEET NUMBER	X
FIGURE NUMBER	1

**SAMPLE LOCATIONS FOR LOU #60 IN AREA III  
 FORMER ACID DRAIN SYSTEM SEGMENT**

Phase B Area III Source Area Investigation  
 Tronox Facility  
 Henderson, Nevada

SCALE:	DATE:	PROJECT NUMBER:
AS SHOWN	6/3/2008	04020-023-430

ENSR | AECOM

ENSR CORPORATION  
 1220 AVENIDA ACASO  
 CAMARILLO, CALIFORNIA 93012  
 PHONE: (805) 388-3775  
 FAX: (805) 388-3577  
 WEB: HTTP://WWW.ENSR.AECOM.COM

DESIGNED BY:	B. Ho
DRAWN BY:	M. Scop
CHECKED BY:	C. Schnell
APPROVED BY:	B. Ho

