

DESIGNED BY:	B. Wilson
DRAWN BY:	M. Scop
CHECKED BY:	C. Schnell
APPROVED BY:	B. Ho

**ENSR** AECOM

ENSR CORPORATION  
 1220 AVENIDA ACASO  
 CARMARILLO, CALIFORNIA 93012  
 PHONE: (805) 388-3775  
 FAX: (805) 388-3577  
 WEB: HTTP://WWW.ENSR.AECOM.COM

SAMPLE LOCATIONS FOR LOU #5	
BETA DITCH	
Phase B Area II Source Area Investigation	
Tronox Facility	
Henderson, Nevada	
SCALE:	PROJECT NUMBER: 04020-023-430
DATE:	6/11/2008
AS SHOWN:	

FIGURE NUMBER:	1
SHEET NUMBER:	X

- move SA67 N into Beta Ditch
- move SA129 downstream of LOU60
- move SA165 downstream
- additional boring at outfall of LOU59 (just downstream)





DESIGNED BY:	G. Heils
DRAWN BY:	M. Scop
CHECKED BY:	C. Schrell
APPROVED BY:	B. Ho

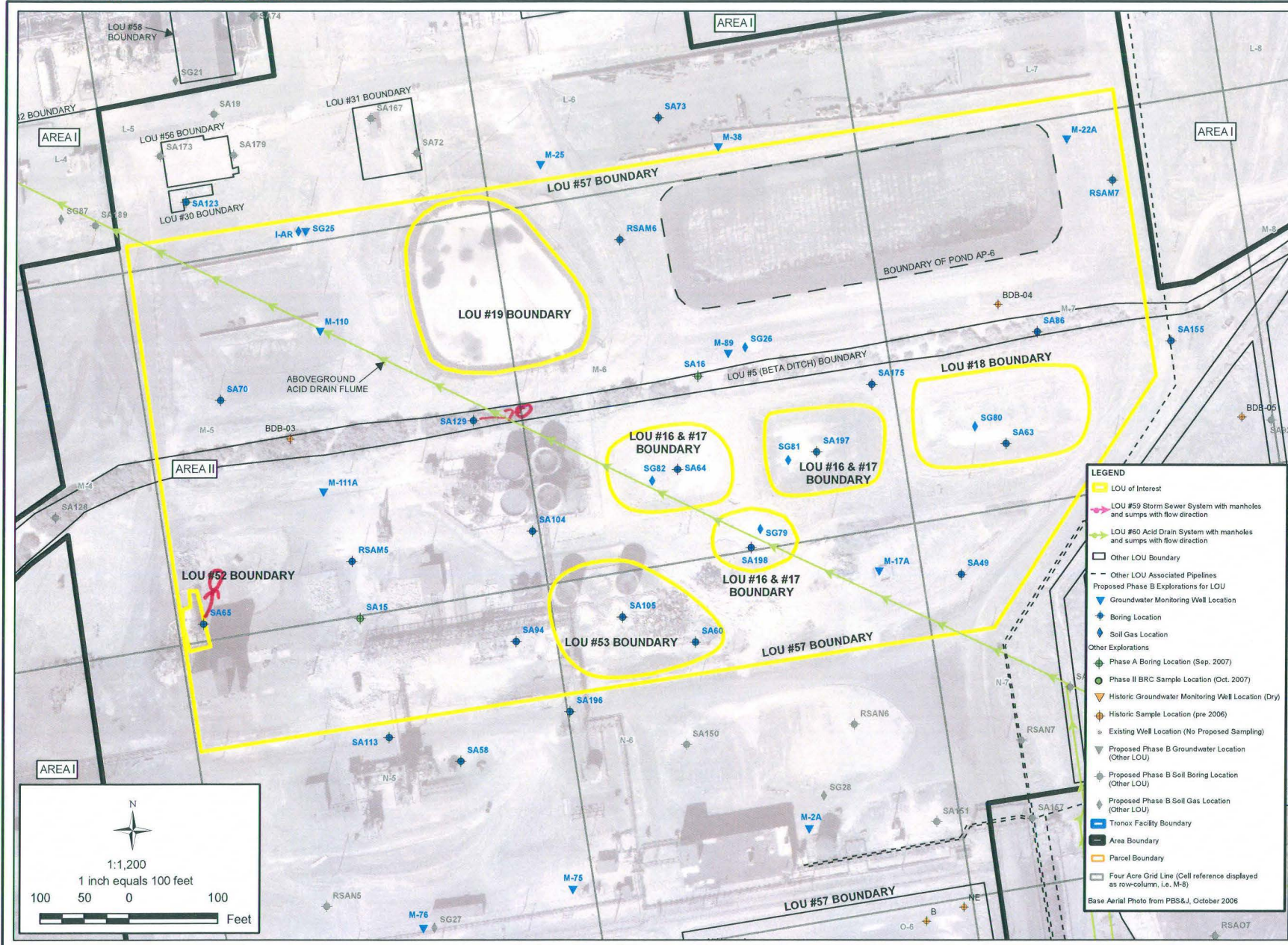
ENSR CORPORATION  
1220 AVENIDA CASCO  
CAMARILLO, CALIFORNIA 93012  
PHONE: (805) 388-3775  
FAX: (805) 388-3577  
WEB: HTTP://WWW.ENSR.AECOM.COM

SAMPLE LOCATIONS FOR LOU #7, #8, #9, #13 AND #14 OLD PONDS P-2 AND P-3, NEW POND P-3, POND S-1, P-1 AND ASSOCIATED CONVEYANCE PIPING	
Phase B Area II Source Area Investigation Tronox Facility, Henderson, Nevada	
SCALE:	PROJECT NUMBER
DATE:	04/20-02/3-4/30
AS SHOWN	6/13/2008

FIGURE NUMBER:	1
SHEET NUMBER:	X

- move SA53 to white stained soil West of LOU 9
- additional boring near SB2-8 (LOU8)
- additional boring in LOU 7 where wall stains are noted
- additional boring in LOU 7 where "white encrustments" are located





DESIGNED BY:	G. Heis
DRAWN BY:	M. Scapp
CHECKED BY:	G. Heis
APPROVED BY:	B. Hg

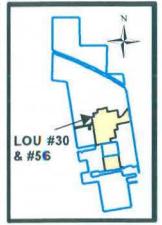
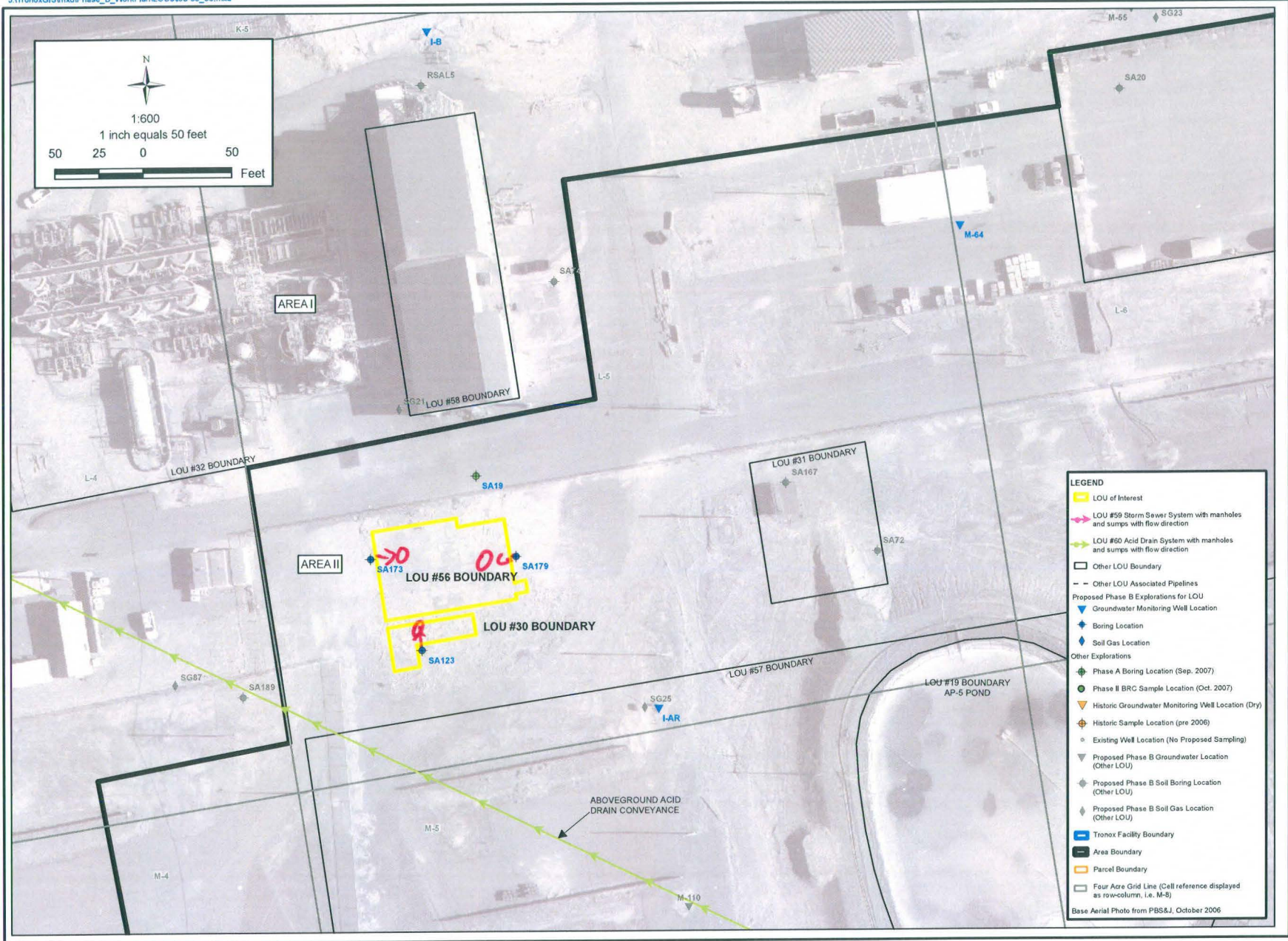
ENSR AECOM  
**ENSR**  
 ENSR CORPORATION  
 1500 N. W. 34th St., Suite 200  
 Chamblee, GA 30128  
 PHONE: (605) 388-5775  
 FAX: (605) 388-3577  
 WEB: HTTP://WWW.ENSR.AECOM.COM

<b>SAMPLE LOCATIONS FOR LOU #57, #16, #17, #18, #19, #52 &amp; #53</b>	
Phase B Area II Source Area Investigation	
Tronox Facility Henderson, Nevada	
SCALE:	PROJECT NUMBER: 04020-023-430
DATE:	6/11/2008
AS SHOWN	

FIGURE NUMBER:	1
SHEET NUMBER:	X

*move SA65 to area of depression off of NEC of Lou 52*





DESIGNED BY:	G. HEB
DRAWN BY:	M. SCOP
CHECKED BY:	G. HEB
APPROVED BY:	B. Hc

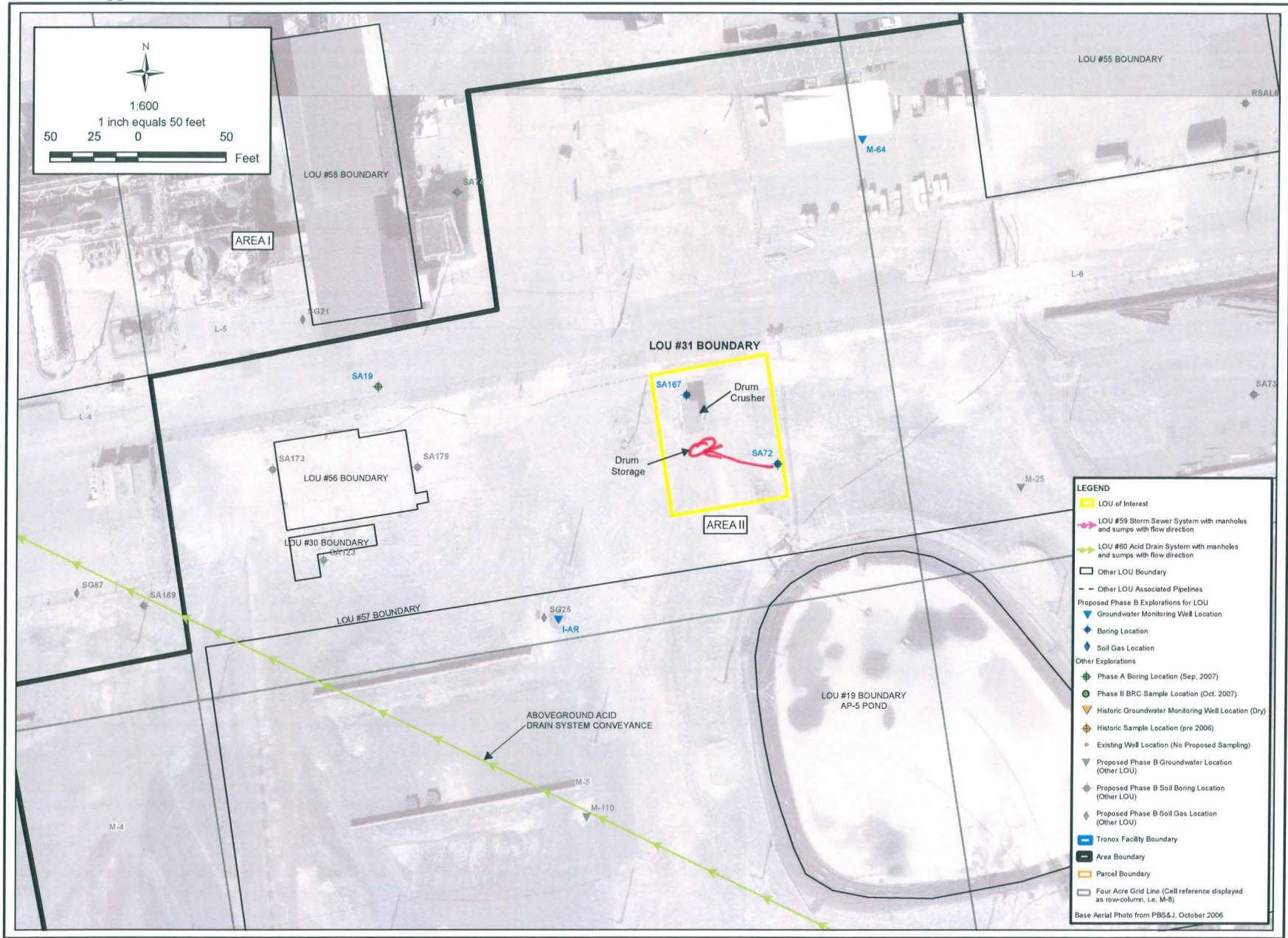
ENSR CORPORATION  
 1220 AVENIDA ACASO  
 CAMARILLO, CALIFORNIA 93012  
 PHONE: (805) 388-3775  
 FAX: (805) 388-3577  
 WEB: HTTP://WWW.ENSR.AECOM.COM

<b>SAMPLE LOCATIONS FOR LOU #30 &amp; #56</b>	
<b>AP AREA - PAD 95 AND OLD BUILDING</b>	
<b>D-1 WASHDOWN</b>	
Phase B Area II Source Area Investigation	
Tronox Facility	
Henderson, Nevada	
SCALE:	AS SHOWN
DATE:	6/16/2008
PROJECT NUMBER:	04020-023-430

FIGURE NUMBER:	1
SHEET NUMBER:	X

. move all boring w/in LOUs





*move SA7Z to Drum Storage Area*



DESIGNED BY: B. Wilson	DRAWN BY: M. Scop	CHECKED BY: C. Schriell	APPROVED BY: B. Hg
---------------------------	----------------------	----------------------------	-----------------------

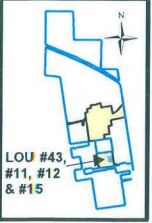
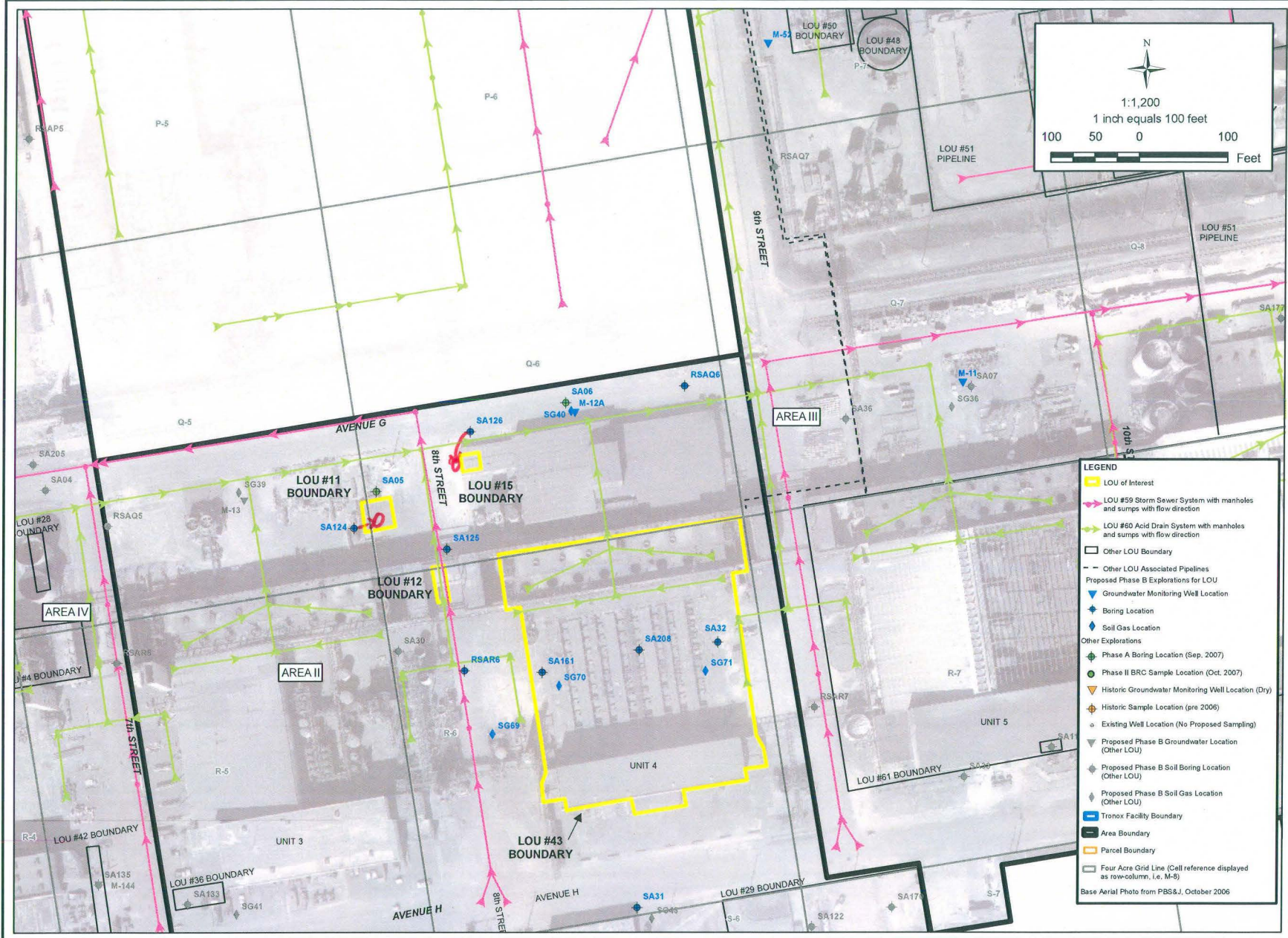
ENSR AECOM  
 ENSR CORPORATION  
 1220 AVENUE CASCORNIA 93012  
 CHICO, CALIFORNIA 95926  
 PHONE: (865) 388-5775  
 FAX: (865) 388-3877  
 WEB: HTTP://WWW.ENSRAECOM.COM

<b>SAMPLE LOCATIONS FOR LOU #31</b>	
Phase B Area II Source Area Investigation	
Tronox Facility Henderson, Nevada	
SCALE:	PROJECT NUMBER: 04020-023-430
DATE:	6/11/2008
AS SHOWN	

FIGURE NUMBER: <b>1</b>
SHEET NUMBER: X

- LEGEND**
- LOU of Interest
  - LOU #59 Storm Sewer System with manholes and sumps with flow direction
  - LOU #60 Acid Drain System with manholes and sumps with flow direction
  - Other LOU Boundary
  - Other LOU Associated Pipelines
  - Proposed Phase B Explorations for LOU
  - ▼ Groundwater Monitoring Well Location
  - ◆ Boring Location
  - ◆ Soil Gas Location
  - Other Explorations
    - ◆ Phase A Boring Location (Sep. 2007)
    - ◆ Phase II BRC Sample Location (Oct. 2007)
    - ◆ Historic Groundwater Monitoring Well Location (Dry)
    - ◆ Historic Sample Location (pre 2006)
    - ◆ Existing Well Location (No Proposed Sampling)
    - ▼ Proposed Phase B Groundwater Location (Other LOU)
    - ◆ Proposed Phase B Soil Boring Location (Other LOU)
    - ◆ Proposed Phase B Soil Gas Location (Other LOU)
  - Tronox Facility Boundary
  - Area Boundary
  - Parcel Boundary
  - Four Acre Grid Line (Cell reference displayed as row-column, i.e. M-8)
- Base Aerial Photo from PBS&J, October 2006





DESIGNED BY:	G. Heib
DRAWN BY:	M. Scpp
CHECKED BY:	C. Schnell
APPROVED BY:	B. Ho

**ENSR AECOM**

**ENSR CORPORATION**  
 1740 N. DRAKE BOULEVARD  
 CHANDLER, ARIZONA 85012  
 PHONE: (602) 388-3775  
 FAX: (602) 388-3577  
 WEB: HTTP://WWW.ENSR.AECOM.COM

- LEGEND**
- LOU of Interest
  - LOU #59 Storm Sewer System with manholes and sumps with flow direction
  - LOU #60 Acid Drain System with manholes and sumps with flow direction
  - Other LOU Boundary
  - Other LOU Associated Pipelines
  - Proposed Phase B Explorations for LOU
  - Groundwater Monitoring Well Location
  - Boring Location
  - Soil Gas Location
  - Other Explorations
  - Phase A Boring Location (Sep. 2007)
  - Phase II BRC Sample Location (Oct. 2007)
  - Historic Groundwater Monitoring Well Location (Dry)
  - Historic Sample Location (pre 2006)
  - Existing Well Location (No Proposed Sampling)
  - Proposed Phase B Groundwater Location (Other LOU)
  - Proposed Phase B Soil Boring Location (Other LOU)
  - Proposed Phase B Soil Gas Location (Other LOU)
  - Tronox Facility Boundary
  - Area Boundary
  - Parcel Boundary
  - Four Acre Grid Line (Cell reference displayed as row-column, i.e. M-8)
- Base Aerial Photo from PBS&J, October 2006

**SAMPLE LOCATIONS FOR LOU #43, #11, #12 & #15**

**UNIT 4 BASEMENT AND OLD CHLORATE PLANT DECOMMISSIONING, SODIUM CHLORATE FILTER CAKE HOLDING AREA, HAZARDOUS WASTE STORAGE AREA & PLATINUM DRYING UNIT**

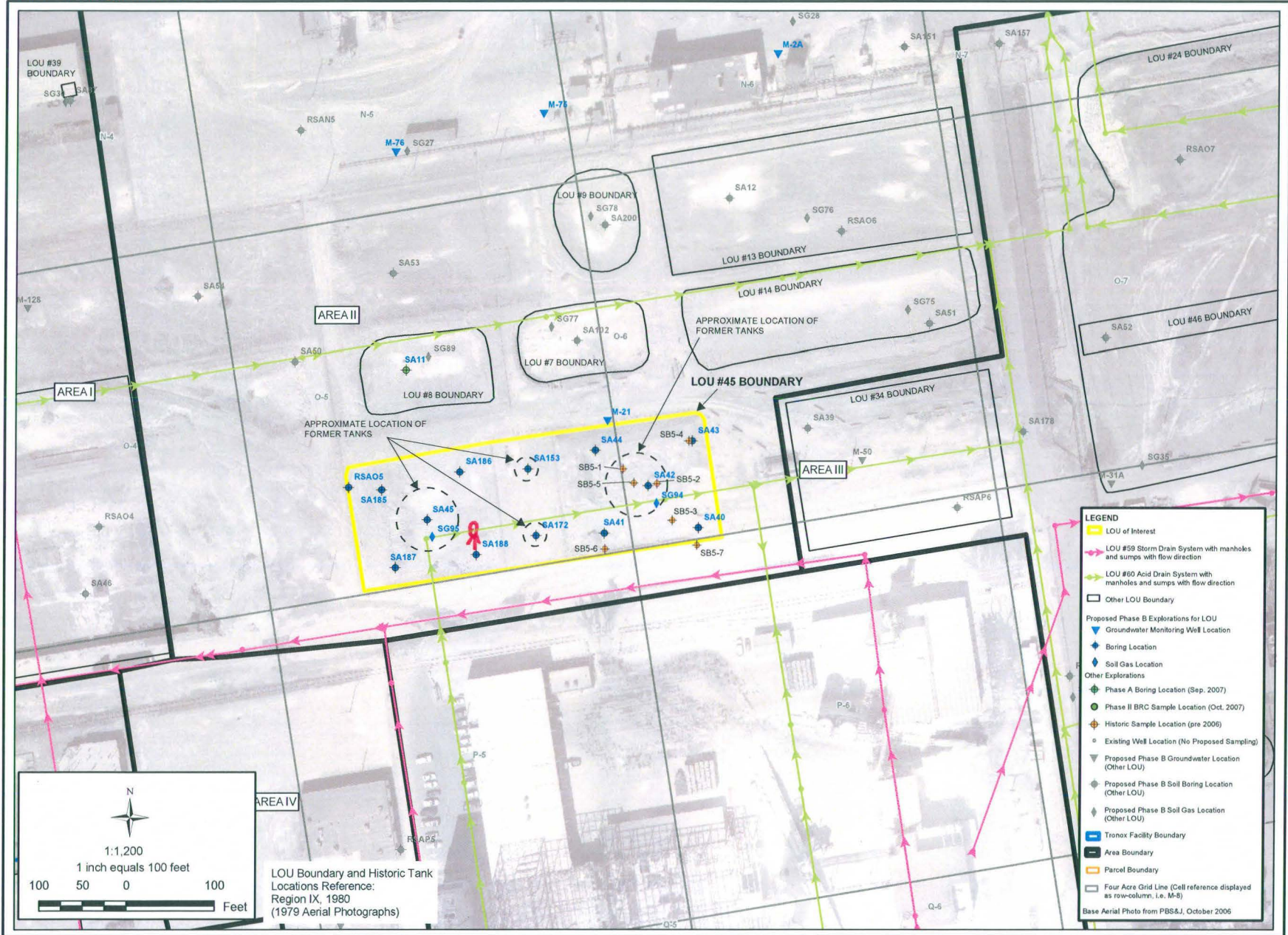
Phase B Area II Source Area Investigation, Tronox Facility Henderson, Nevada

SCALE:	DATE:	PROJECT NUMBER:
AS SHOWN	6/13/2008	04020-023-430

FIGURE NUMBER:	1
SHEET NUMBER:	X

*• move SA124 into LOU 11*  
*• move SA126 adjacent to LOU 15 to the West.*





DESIGNED BY:	B. Wilson
DRAWN BY:	M. Scop
CHECKED BY:	C. Schell
APPROVED BY:	B. Ho

**ENSR AECOM**

**ENSR CORPORATION**  
 1000 PACIFIC ST  
 CAMARILLO, CALIFORNIA 93012  
 PHONE: (805) 388-3775  
 FAX: (805) 388-3577  
 WEB: HTTP://WWW.ENSR.AECOM.COM

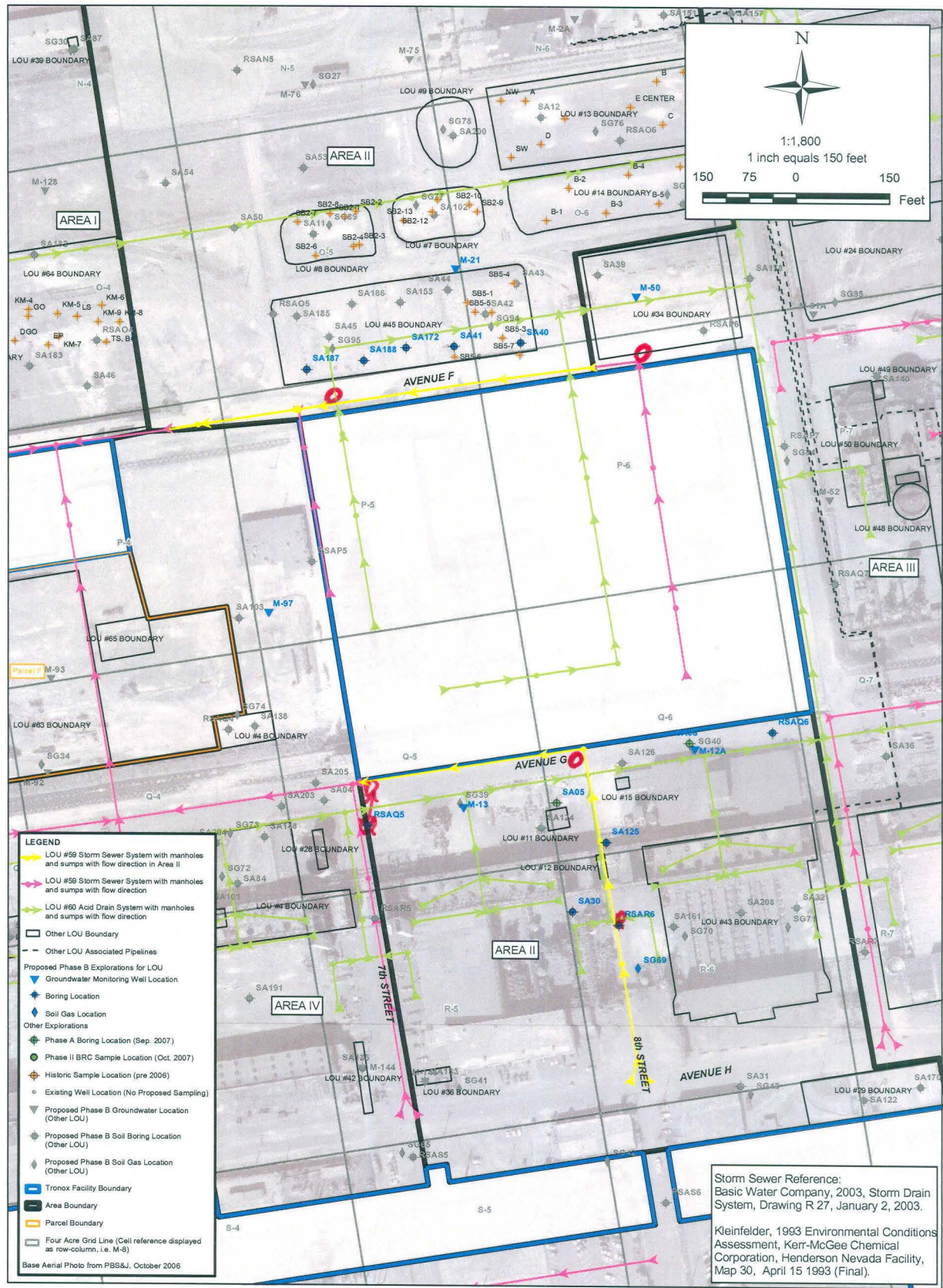
<b>SAMPLE LOCATIONS FOR LOU #45 DIESEL STORAGE TANKS</b>	
Phase B Area II Source Area Investigation Tronox Facility Henderson, Nevada	
SCALE:	PROJECT NUMBER: 04020-023-430
DATE:	6/16/2008
AS SHOWN:	

FIGURE NUMBER:	1
SHEET NUMBER:	X

*Move SA188 north over LOU 60.*



additional boring  
 additional boring  
 move RSAOS to south of Chemstar  
 North of Chemstar, south of Lou 45, over Lou 60  
 North of Chemstar, south of Lou 34, at 90° turn  
 south of Chemstar, at 90° turn  
 south of Chemstar  
 adjacent to Lou 59  
 move RSA B6 overlaid



SHEET NUMBER 1	FIGURE NUMBER 1	<p><b>SAMPLE LOCATIONS FOR LOU #59 STORM SEWER SYSTEM SEGMENT IN AREA II</b></p> <p>Phase B Area II Source Area Investigation                  Tronox Facility                  Henderson, Nevada</p>	<p>ENSR AECOM</p>	<p>DESIGNED BY: B. Ho</p> <p>DRAWN BY: M. Scop</p> <p>CHECKED BY: C. Schnell</p> <p>APPROVED BY: B. Ho</p>	
SCALE: AS SHOWN		DATE: 6/16/2008	PROJECT NUMBER: 04020-023-430	<p>ENSR CORPORATION                  1220 AVENIDA ACASO                  CAMARILLO, CALIFORNIA 93012                  PHONE: (805) 388-3775                  FAX: (805) 388-3577                  WEB: HTTP://WWW.ENSR.AECOM.COM</p>	