

Table 1 - Seep Well Field (SWF) Operational Metrics

Nevada Environmental Response Trust Groundwater Extraction and Treatment System Enhanced Operational Metrics																				
Date	LS #1 Flow (gpm)	PC-116R (East Well)		PC-99R2/R3 (Center Well)		PC-115R (West Well)		PC-117		PC-118		PC-119		PC-120		PC-121		PC-133		
		Flow (gpm)	Water Elevation (ft amsl)	Flow (gpm)	Water Elevation (ft amsl)	Flow (gpm)	Water Elevation (ft amsl)	Flow (gpm)	Water Elevation (ft amsl)	Flow (gpm)	Water Elevation (ft amsl)	Flow (gpm)	Water Elevation (ft amsl)	Flow (gpm)	Water Elevation (ft amsl)	Flow (gpm)	Water Elevation (ft amsl)	Flow (gpm)	Water Elevation (ft amsl)	
09/01/02	484	159	1536.06	78	1543.19	129	1542.54	107	1533.15	65	1547.74	109	1548.48	25	1550.04	20	1550.78	5.9	< 1520.00	
09/02/02	484	159	1536.03	78	1543.18	129	1542.51	107	1533.13	65	1547.72	109	1548.43	37	1548.09	20	1550.73	5.9	< 1520.00	
09/03/02	488	159	1535.95	78	1543.26	129	1542.44	107	1533.06	65	1547.65	109	1548.32	51	1549.36	20	1550.62	5.9	< 1520.00	
09/04/02	493	159	1535.92	78	1543.25	129	1542.42	107	1533.04	65	1547.63	109	1548.30	51	1549.34	20	1550.60	5.9	< 1520.00	
09/05/02	483	159	1535.90	78	1543.24	129	1542.40	107	1533.02	65	1547.62	108	1548.28	51	1549.32	20	1550.59	5.9	< 1520.00	
09/06/02	483	159	1535.87	78	1543.17	129	1542.39	107	1533.00	65	1547.61	108	1548.27	51	1549.30	20	1550.57	5.9	< 1520.00	
09/07/02	484	159	1535.84	78	1543.09	129	1542.37	107	1532.97	65	1547.59	108	1548.25	51	1549.29	20	1550.56	6.0	< 1520.00	
09/08/02	484	159	1535.83	78	1543.07	129	1542.36	107	1532.96	65	1547.59	108	1548.25	51	1549.28	20	1550.55	5.9	< 1520.00	
09/09/02	483	159	1535.80	78	1543.06	129	1542.35	107	1532.94	65	1547.58	108	1548.23	51	1549.27	20	1550.54	5.9	< 1520.00	
09/10/02	484	158	1535.79	78	1543.07	129	1542.34	107	1532.93	65	1547.57	108	1548.22	51	1549.26	20	1550.53	6.0	< 1520.00	
09/11/02	483	158	1535.80	78	1543.08	129	1542.35	107	1532.93	65	1547.58	108	1548.23	51	1549.26	20	1550.54	6.0	< 1520.00	
09/12/02	485	158	1535.81	78	1543.08	129	1542.36	107	1532.94	65	1547.59	108	1548.24	51	1549.27	20	1550.55	6.0	< 1520.00	
09/13/02	484	158	1535.81	78	1543.08	129	1542.37	107	1532.94	65	1547.59	108	1548.25	51	1549.29	20	1550.56	6.0	< 1520.00	
09/14/02	484	158	1535.80	78	1543.09	129	1542.37	107	1532.93	65	1547.59	108	1548.25	51	1549.29	20	1550.57	6.0	< 1520.00	
09/15/02	483	158	1535.80	78	1543.09	129	1542.37	107	1532.93	65	1547.59	108	1548.26	51	1549.29	20	1550.57	6.0	< 1520.00	
09/16/02	483	158	1535.80	78	1543.08	129	1542.38	107	1532.93	65	1547.61	108	1548.27	51	1549.32	20	1550.60	6.0	< 1520.00	
09/17/02	483	158	1535.83	78	1543.09	129	1542.43	107	1532.96	65	1547.64	108	1548.33	51	1549.38	20	1550.67	6.0	< 1520.00	
09/18/02	484	158	1535.87	78	1543.12	129	1542.48	107	1532.99	65	1547.69	108	1548.39	51	1549.45	20	1550.75	6.0	< 1520.00	
09/19/02	481	156	1536.33	77	1543.42	128	1542.73	106	1533.39	64	1547.95	107	1548.58	50	1549.63	20	1550.91	6.7	< 1520.00	
09/20/02	485	158	1536.22	78	1543.47	129	1542.69	107	1533.24	65	1547.94	109	1548.58	51	1549.65	20	1550.95	6.5	< 1520.00	
09/21/02	486	158	1536.22	79	1543.48	129	1542.72	107	1533.25	65	1547.96	109	1548.62	51	1549.70	20	1551.00	6.4	< 1520.00	
09/22/02	486	158	1536.23	79	1543.50	129	1542.74	107	1533.25	65	1547.99	109	1548.65	51	1549.72	20	1551.03	6.4	< 1520.00	
09/23/02	484	158	1536.25	79	1543.51	129	1542.76	107	1533.26	65	1548.00	109	1548.66	51	1549.74	20	1551.04	6.5	< 1520.00	
09/24/02	485	158	1536.25	79	1543.52	129	1542.76	107	1533.26	65	1548.00	109	1548.66	51	1549.73	20	1551.03	6.5	< 1520.00	
09/25/02	485	158	1536.25	79	1543.52	129	1542.75	107	1533.25	65	1548.00	109	1548.66	51	1549.72	20	1551.02	6.5	< 1520.00	
09/26/02	485	158	1536.24	79	1543.51	129	1542.74	107	1533.24	65	1547.99	109	1548.64	51	1549.71	20	1551.01	6.5	< 1520.00	
09/27/02	485	158	1536.22	78	1543.50	129	1542.73	107	1533.22	65	1547.98	109	1548.63	51	1549.69	20	1550.98	6.6	< 1520.00	
09/28/02	485	158	1536.20	78	1543.50	129	1542.72	107	1533.21	65	1547.96	109	1548.62	51	1549.67	20	1550.97	6.6	< 1520.00	
09/29/02	485	158	1536.20	78	1543.50	129	1542.72	107	1533.20	65	1547.96	109	1548.61	51	1549.67	20	1550.96	6.6	< 1520.00	
09/30/02	484	158	1536.18	78	1543.48	129	1542.70	107	1533.19	65	1547.95	109	1548.60	51	1549.66	20	1550.95	6.6	< 1520.00	
Monthly Average	484	158	1536.01	78	1543.27	129	1542.53	107	1533.09	65	1547.76	108	1548.43	50	1549.45	20	1550.76	6.2	< 1520.00	
Analytical	Conc (mg/L)		Date		Conc (mg/L)		Date		Conc (mg/L)		Date		Conc (mg/L)		Date		Conc (mg/L)		Date	
Perchlorate	14	9/8/2022	18	9/8/2022	15	9/8/2022	5.3	9/8/2022	4.9	9/8/2022	1.3	9/8/2022	0.24	9/8/2022	0.36	9/8/2022	1.3	9/8/2022	1.3	9/8/2022
Hexavalent Chromium	0.011	9/8/2022	0.0012	9/8/2022	ND	9/8/2022	0.0087	9/8/2022	ND	9/8/2022	ND	9/8/2022	ND	9/8/2022	ND	9/8/2022	ND	9/8/2022	ND	9/8/2022
Total Chromium	0.0081 J	9/8/2022	ND	9/8/2022	ND	9/8/2022	0.0066 J	9/8/2022	ND	9/8/2022	ND	9/8/2022	ND	9/8/2022	ND	9/8/2022	ND	9/8/2022	ND	9/8/2022

Notes:
 Flow reported as gpm is a daily average calculated from the totalizer reading.
 ND = Not detected above laboratory method detection limit (Cr(TR)=2.5 ug/L; Cr(VI) =0.20 ug/L).
 J = Result is less than the reporting limit but greater than or equal to the method detection limit and the concentration is an approximate value.
 1: Analytical results are reported from Eurofins TestAmerica.
 2: Duplicates taken on 09/08 for well PC-120; average of both values is presented and used for calculations.

Nevada Environmental Response Trust Groundwater Extraction and Treatment System Enhanced Operational Metrics																	
Date	LS #3 Flow (gpm)	ART-1/1A		ART-2/2A		ART-3/3A		ART-4/4A		ART-9		ART-7A/7B		ART-8/8A		PC-150	
		Flow (gpm)	Water Elevation (ft amsl)	Flow ² (gpm)	Water Elevation (ft amsl)	Flow (gpm)	Water Elevation (ft amsl)	Flow ² (gpm)	Water Elevation (ft amsl)	Flow (gpm)	Water Elevation (ft amsl)	Flow ² (gpm)	Water Elevation (ft amsl)	Flow (gpm)	Water Elevation (ft amsl)	Flow ³ (gpm)	Water Elevation (ft amsl)
09/01/22	397	42	1584.06	141	1583.90	22	1582.81	3.6	1578.84	38	1576.66	27	1579.50	172	1581.40	1.5	1578.70
09/02/22	396	42	1584.05	141	1583.89	22	1582.81	3.6	1578.84	38	1576.66	26	1579.53	172	1581.39	1.5	1578.70
09/03/22	396	42	1584.05	141	1583.89	22	1582.81	3.6	1578.84	38	1576.67	26	1579.64	172	1581.39	1.5	1578.70
09/04/22	396	42	1584.05	141	1583.89	22	1582.81	3.6	1578.84	38	1576.67	26	1579.62	172	1581.40	1.5	1578.70
09/05/22	396	42	1584.06	141	1583.89	22	1582.81	3.6	1578.84	38	1576.67	26	1579.57	172	1581.40	1.5	1578.70
09/06/22	395	42	1584.06	141	1583.90	22	1582.81	3.6	1578.84	37	1576.67	26	1579.61	172	1581.40	1.5	1578.70
09/07/22	396	42	1584.06	141	1583.90	22	1582.81	3.6	1578.84	37	1576.68	26	1579.69	172	1581.40	1.5	1578.70
09/08/22	396	42	1584.07	141	1583.91	22	1582.82	3.6	1578.84	37	1576.70	26	1579.54	172	1581.41	1.5	1578.70
09/09/22	396	42	1584.07	141	1583.91	22	1582.82	3.6	1578.84	37	1576.70	26	1579.45	172	1581.41	1.5	1578.70
09/10/22	395	42	1584.06	141	1583.90	22	1582.81	3.6	1578.83	38	1576.69	26	1579.70	172	1581.41	1.5	1578.70
09/11/22	395	42	1584.07	141	1583.91	22	1582.82	3.6	1578.84	38	1576.69	26	1579.77	172	1581.41	1.5	1578.70
09/12/22	390	35	1581.30	141	1583.96	22	1582.84	3.6	1580.52	38	1576.68	26	1579.72	171	1581.42	1.5	1578.70
09/13/22	390	32	1580.38	141	1584.05	22	1582.90	3.7	1579.96	37	1576.67	26	1579.56	172	1581.51	1.5	1578.70
09/14/22	396	42	1584.09	141	1583.97	22	1582.87	3.7	1578.83	38	1576.66	26	1579.63	172	1581.46	1.5	1578.70
09/15/22	396	42	1584.11	141	1583.97	22	1582.86	3.7	1578.83	38	1576.67	26	1579.63	172	1581.46	1.5	1578.70
09/16/22	396	42	1584.13	141	1583.97	22	1582.87	3.7	1578.83	38	1576.67	26	1579.60	172	1581.46	1.5	1578.70
09/17/22	396	42	1584.14	141	1583.98	22	1582.87	3.7	1578.83	38	1576.67	26	1579.47	172	1581.47	1.5	1578.70
09/18/22	396	42	1584.15	141	1583.98	22	1582.88	3.7	1578.83	37	1576.67	26	1579.48	172	1581.47	1.5	1578.70
09/19/22	385	41	1584.31	139	1584.24	22	1583.10	3.7	1578.90	38	1576.78	26	1579.68	170	1581.69	1.5	1578.70
09/20/22	398	42	1584.25	142	1584.11	22	1582.97	3.8	1578.83	38	1576.69	26	1579.60	173	1581.56	1.5	1578.70
09/21/22	397	42	1584.22	142	1584.06	22	1582.93	3.7	1578.83	38	1576.68	26	1579.61	173	1581.53	1.5	1578.70
09/22/22	397	42	1584.21	142	1584.05	22	1582.92	3.7	1578.83	38	1576.69	26	1579.71	172	1581.52	1.5	1578.70
09/23/22	396	42	1584.20	142	1584.04	22	1582.91	3.7	1578.83	38	1576.69	26	1579.76	172	1581.51	1.5	1578.70
09/24/22	396	42	1584.20	142	1584.04	22	1582.91	3.7	1578.83	38	1576.67	26	1579.82	172	1581.51	1.5	1578.70
09/25/22	397	42	1584.20	142	1584.04	22	1582.91	3.7	1578.83	38	1576.67	26	1579.81	172	1581.51	1.5	1578.70
09/26/22	396	42	1584.20	141	1584.04	22	1582.91	3.7	1578.83	38	1576.68	26	1579.75	172	1581.52	1.5	1578.70
09/27/22	396	42	1584.20	141	1584.04	22	1582.92	3.7	1578.83	38	1576.68	26	1579.74	172	1581.52	1.5	1578.70
09/28/22	396	42	1584.20	141	1584.04	22	1582.92	3.7	1578.83	38	1576.67	26	1579.81	172	1581.52	1.5	1578.70
09/29/22	397	42	1584.21	141	1584.05	22	1582.93	3.7	1578.83	38	1576.68	26	1579.72	172	1581.45	1.5	1578.70
09/30/22	397	42	1584.22	141	1584.06	22	1582.93	3.7	1578.83	38	1576.68	26	1579.58	172	1581.39	1.5	1578.70
Monthly Average	395	41	1583.92	141	1583.99	22	1582.88	3.7	1578.93	38	1576.68	26	1579.64	172	1581.46	1.5	1578.70
Analytical ¹	Conc (mg/L)	Date	Conc (mg/L)	Date	Conc (mg/L)	Date	Conc (mg/L)	Date	Conc (mg/L)	Date	Conc (mg/L)	Date	Conc (mg/L)	Date	Conc (mg/L)	Date	
Perchlorate	20	9/8/2022	6.4	9/8/2022	160	9/8/2022	96	9/8/2022	160	9/8/2022	64	9/8/2022	54	9/8/2022	37	9/8/2022	
Hexavalent Chromium	ND	9/8/2022	0.0032	9/8/2022	0.30	9/8/2022	0.15	9/8/2022	0.59	9/8/2022	0.47	9/8/2022	0.064	9/8/2022	0.040	9/8/2022	
Total Chromium	ND	9/8/2022	ND	9/8/2022	0.27	9/8/2022	0.13	9/8/2022	0.55	9/8/2022	0.43	9/8/2022	0.053	9/8/2022	0.034	9/8/2022	

Notes:
 Flow reported as gpm is a daily average calculated from the totalizer reading.
 ND = Not detected above laboratory method detection limit (ClO₄ = 0.5 ug/L; ClO₃ = 10 ug/L; NO₃-N = 0.055 mg/L; Cr(VI) = 0.25 ug/L).
 ART-1, 2, 3, 4, 7B, and 8 have adjacent recovery wells, both of which can be used for extraction. The pumping well can be chosen manually or automatically, based on operational considerations.
 The wells with transducers are ART-1, -2, -3, -4, -7A, -8, -9, and PC-150
 1: Analytical results are reported from Eurofins TestAmerica.
 2: On 09/12, ART-2/2A offline briefly; ART-4 switched to ART-4A and ART-7 switched to ART-7A
 3: Conducted periodic bucket tests to confirm flow rates for PC-150. Average flow of 1.5 gpm determined from flow tests is presented for 09/01-09/30 flows and used for calculation purposes. Flow was steady throughout the month but the totalizer showed zero flow because totalizer units are 1,000 gallons.

Table 3 - Interceptor Well Field (IWF) Operational Metrics

Nevada Environmental Response Trust Groundwater Extraction and Treatment System Enhanced Operational Metrics																				
Date	I-AR		I-AA		I-AB		I-AC		I-AD		I-B		I-C		I-D		I-E		I-F	
	Flow (gpm)	Water Elevation (ft amsl)	Flow (gpm)	Water Elevation (ft amsl)	Flow (gpm)	Water Elevation (ft amsl)	Flow (gpm)	Water Elevation (ft amsl)	Flow ^{3,4} (gpm)	Water Elevation (ft amsl)	Flow ^{3,5} (gpm)	Water Elevation (ft amsl)	Flow ⁶ (gpm)	Water Elevation (ft amsl)	Flow ^{3,5,6,7,8} (gpm)	Water Elevation (ft amsl)	Flow ^{5,10} (gpm)	Water Elevation (ft amsl)	Flow ⁵ (gpm)	Water Elevation (ft amsl)
09/01/22	0.19	1714.96	0.88	1707.64	0.3	1713.12	0.0	1723.44	0.73	1720.17	0.31	1709.72	2.6	1708.74	0.72	1712.39	1.1	1708.59	2.8	1708.94
09/02/22	0.19	1714.97	0.87	1707.64	0.4	1710.00	0.0	1723.42	0.72	1720.24	0.29	1709.71	2.6	1708.73	0.81	1711.02	1.1	1710.55	2.8	1708.94
09/03/22	0.19	1714.97	0.87	1707.64	0.4	1710.00	0.0	1723.39	0.69	1720.42	0.26	1709.71	2.5	1708.73	0.77	1711.58	1.1	1711.08	2.7	1708.95
09/04/22 ²	0.19	1715.18	0.83	1708.26	0.4	1710.49	0.0	1723.38	0.45	1721.89	0.23	1712.44	2.4	1709.72	0.47	1713.62	0.92	1713.12	1.8	1712.44
09/05/22	0.18	1715.33	0.87	1707.64	0.4	1710.00	0.0	1723.36	0.20	1723.49	0.23	1713.74	2.6	1708.74	0.35	1714.75	0.89	1714.43	3.4	1711.30
09/06/22	0.18	1715.33	0.87	1707.64	0.4	1710.00	0.0	1723.35	0.21	1723.45	0.29	1711.47	2.6	1708.74	0.68	1713.13	1.1	1711.11	3.2	1708.72
09/07/22	0.18	1715.33	0.87	1707.64	0.39	1710.00	0.016	1722.49	0.21	1723.47	0.28	1711.99	2.5	1708.74	0.67	1713.19	1.1	1710.83	3.1	1708.72
09/08/22	0.18	1715.33	0.87	1707.64	0.4	1710.00	0.0	1723.73	0.2	1723.48	0.26	1712.86	2.5	1708.74	0.66	1713.27	1.1	1710.71	3.1	1708.73
09/09/22	0.18	1715.33	0.87	1707.65	0.4	1710.00	0.0	1723.78	0.20	1723.51	0.24	1713.52	2.5	1708.74	0.67	1713.22	1.1	1711.47	3.0	1708.74
09/10/22	0.18	1715.41	0.87	1707.64	0.2	1713.02	0.0	1723.81	0.19	1723.51	0.22	1714.49	2.7	1708.74	0.73	1712.70	1.1	1711.98	3.0	1708.75
09/11/22	0.19	1715.62	0.88	1707.65	0.0	1718.75	0.0	1723.69	0.19	1723.52	0.22	1714.56	2.7	1708.74	0.87	1711.32	1.1	1712.16	3.0	1708.81
09/12/22	0.19	1715.47	0.89	1707.64	0.0	1718.78	0.0	1723.69	0.19	1723.54	0.20	1714.70	2.7	1708.74	0.83	1711.89	1.1	1712.35	3.0	1708.80
09/13/22	0.19	1715.35	0.89	1707.64	0.0	1718.79	0.0	1723.66	0.19	1723.56	0.21	1714.66	2.8	1708.74	0.79	1712.41	1.1	1712.49	3.0	1708.78
09/14/22	0.19	1715.30	0.89	1707.64	0.0	1718.79	0.0	1723.72	0.19	1723.56	0.22	1714.55	2.8	1708.74	0.76	1712.75	1.1	1712.47	3.0	1708.80
09/15/22	0.18	1715.31	0.88	1707.65	0.0	1718.78	0.0	1723.65	0.44	1721.84	0.26	1712.71	2.7	1708.74	0.84	1711.93	1.1	1712.54	3.0	1708.80
09/16/22	0.19	1715.31	0.88	1707.65	0.0	1718.76	0.0	1723.64	0.91	1718.33	0.27	1712.18	2.7	1708.74	0.93	1710.64	1.1	1712.50	3.1	1708.74
09/17/22	0.19	1715.31	0.88	1707.65	0.0	1718.76	0.0	1723.65	0.89	1718.56	0.26	1712.20	2.7	1708.74	0.87	1711.18	1.1	1712.32	3.1	1708.71
09/18/22	0.19	1715.31	0.88	1707.67	0.0	1718.76	0.0	1723.62	0.86	1718.80	0.25	1713.20	2.7	1708.74	0.85	1711.06	1.1	1712.28	3.0	1708.71
09/19/22 ³	0.20	1716.07	0.89	1707.80	0.0	1718.86	0.0	1723.54	0.55	1721.24	0.35	1711.05	2.7	1708.91	0.46	1713.23	1.0	1713.48	3.3	1709.46
09/20/22	0.20	1715.69	0.89	1707.66	0.0	1718.86	0.0	1723.46	0.41	1722.26	0.37	1709.58	2.8	1708.75	0.35	1714.93	1.0	1713.94	3.3	1708.71
09/21/22	0.19	1715.62	0.89	1707.65	0.0	1718.79	0.0	1723.46	0.41	1722.27	0.36	1709.56	2.7	1708.75	0.87	1711.25	1.0	1713.81	3.1	1708.71
09/22/22	0.16	1716.31	0.88	1707.65	0.0	1718.73	0.0	1723.44	0.74	1719.58	0.36	1709.56	2.7	1708.74	0.96	1709.62	1.0	1713.66	3.0	1708.79
09/23/22	0.15	1718.00	0.88	1707.69	0.0	1718.73	0.0	1723.45	0.86	1718.72	0.35	1709.56	2.7	1708.74	0.87	1710.97	1.0	1713.58	2.9	1708.90
09/24/22	0.15	1717.58	0.88	1707.69	0.0	1718.80	0.0	1723.40	0.69	1720.29	0.36	1709.58	2.7	1708.75	0.50	1713.94	1.0	1713.71	2.8	1708.98
09/25/22	0.14	1717.62	0.88	1707.68	0.0	1718.86	0.0	1723.40	0.66	1720.57	0.38	1709.58	2.7	1708.74	0.44	1714.54	1.0	1713.79	2.9	1708.84
09/26/22	0.14	1718.41	0.89	1707.68	0.0	1718.88	0.0	1723.42	0.65	1720.62	0.39	1709.58	2.7	1708.74	0.44	1714.59	1.0	1713.84	2.9	1708.83
09/27/22	0.15	1717.73	0.89	1707.68	0.0	1718.88	0.0	1723.41	0.65	1720.68	0.38	1709.58	2.7	1708.74	0.44	1714.65	1.0	1713.89	2.9	1708.81
09/28/22	0.15	1717.28	0.89	1707.67	0.0	1718.88	0.0	1723.41	0.63	1720.78	0.39	1709.58	2.7	1708.74	0.44	1714.69	0.99	1713.99	2.9	1708.83
09/29/22	0.15	1717.26	0.89	1707.67	0.0	1718.89	0.0	1723.42	0.62	1720.86	0.43	1709.59	2.7	1708.74	0.46	1714.67	0.96	1714.21	2.9	1708.81
09/30/22	0.15	1717.22	0.88	1707.67	0.0	1718.79	0.0	1723.41	0.61	1720.94	0.40	1709.55	2.7	1708.74	0.83	1710.83	1.0	1713.84	2.9	1708.82
Monthly Average	0.18	1716.00	0.88	1707.68	0.1	1716.09	0.0	1723.49	0.51	1721.47	0.30	1711.49	2.7	1708.78	0.68	1712.66	1.1	1712.62	3.0	1709.03
Analytical ¹	Conc (mg/L)	Date	Conc (mg/L)	Date	Conc (mg/L)	Date	Conc (mg/L)	Date	Conc (mg/L)	Date	Conc (mg/L)	Date	Conc (mg/L)	Date	Conc (mg/L)	Date	Conc (mg/L)	Date	Conc (mg/L)	Date
Perchlorate	340	9/1/2022	24	9/1/2022	71	9/1/2022	180	9/7/2022	180	9/7/2022	220	9/1/2022	420	9/1/2022	340	9/1/2022	340	9/1/2022	490	9/1/2022
Hexavalent Chromium	0.86	9/1/2022	0.055	9/1/2022	ND	9/1/2022	1.8	9/7/2022	1.9	9/7/2022	0.13	9/1/2022	2.5	9/1/2022	4.1	9/1/2022	5.8	9/1/2022	12	9/1/2022
Total Chromium	0.89	9/1/2022	0.054	9/1/2022	0.017	9/1/2022	2.1	9/7/2022	1.8	9/7/2022	0.13	9/1/2022	2.6	9/1/2022	4.1	9/1/2022	5.9	9/1/2022	10	9/1/2022

Notes:
 Flow reported as gpm is a daily average calculated from the totalizer reading.
 ND = Not detected above laboratory method detection limit (ClO₂ = 0.5 ug/L; ClO₃ = 10 ug/L; NO₃-N = 0.055 mg/L; Cr(VI) = 0.25 ug/L).
 1: Analytical results are reported from Eurofins TestAmerica.
 2: On 09/04 and 09/19, IWF offline due to maintenance.
 3: On 09/15, I-AD, I-B, I-D, and I-M adjusted to meet flow targets as directed by the Trust.
 4: On 09/22, I-AD adjusted to meet flow targets as directed by the Trust.
 5: On 09/05, I-B, I-D, I-E, I-F, I-H, I-M, I-N, I-O, I-Q, I-R, I-W, and I-X adjusted to meet flow targets as directed by the Trust.
 6: On 9/10, I-C, I-D, I-H, I-O, I-Q, and I-R adjusted to meet flow targets as directed by the Trust.
 7: On 09/02, I-D, I-M, I-N, and I-O adjusted to meet flow targets as directed by the Trust.
 8: On 9/18, I-D, I-H, I-M, I-N, and I-U adjusted to meet flow targets as directed by the Trust.
 9: On 9/20, I-D, I-H, I-M, I-N, I-Q, and I-R adjusted to meet flow targets as directed by the Trust.
 10: On 9/30, I-D, I-E, I-H, I-M, I-N, and I-R adjusted to meet flow targets as directed by the Trust.

Nevada Environmental Response Trust Groundwater Extraction and Treatment System Enhanced Operational Metrics																				
Date	I-G		I-H		I-I		I-J		I-K		I-L		I-M		I-N		I-O		I-P	
	Flow ¹¹ (gpm)	Water Elevation (ft amsl)	Flow ^{5,6,7,8,9,10} (gpm)	Water Elevation (ft amsl)	Flow ¹² (gpm)	Water Elevation (ft amsl)	Flow ¹³ (gpm)	Water Elevation (ft amsl)	Flow (gpm)	Water Elevation (ft amsl)	Flow ¹⁴ (gpm)	Water Elevation (ft amsl)	Flow ^{3,5,7,8,9,10} (gpm)	Water Elevation (ft amsl)	Flow ^{5,7,8,9,10,15} (gpm)	Water Elevation (ft amsl)	Flow ^{5,6,7} (gpm)	Water Elevation (ft amsl)	Flow (gpm)	Water Elevation (ft amsl)
09/01/22	0.22	1711.24	0.68	1709.83	2.9	1721.13	5.6	1712.28	3.0	1708.45	1.0	< 1714.01	1.9	1717.08	1.1	1717.41	0.51	1720.50	2.0	1718.77
09/02/22	0.22	1711.24	0.67	1709.32	3.0	1721.12	5.6	1712.29	3.0	1708.89	1.1	< 1714.01	2.1	1716.37	1.2	1717.23	0.61	1720.46	2.0	1718.74
09/03/22	0.22	1711.24	0.67	1709.31	3.0	1721.11	5.6	1712.29	3.0	1709.07	1.0	< 1714.01	2.2	1715.83	1.2	1717.13	0.62	1720.44	1.9	1718.71
09/04/22 ²	0.22	1711.52	0.42	1714.23	2.8	1721.26	5.3	1713.73	2.8	1710.39	0.68	1715.90	1.8	1717.04	0.69	1717.56	0.57	1720.51	1.8	1718.96
09/05/22	0.23	1711.24	0.29	1719.85	3.0	1721.17	5.6	1712.29	2.9	1711.69	0.89	1715.29	1.4	1718.55	0.38	1715.68	1.1	1720.31	2.0	1718.94
09/06/22	0.23	1711.24	0.56	1718.43	3.0	1721.12	5.6	1712.29	2.9	1711.40	1.1	< 1714.01	1.8	1717.62	0.78	1712.61	0.80	1720.36	2.0	1718.71
09/07/22	0.22	1711.24	0.53	1718.49	2.9	1721.09	5.6	1712.29	2.9	1711.09	1.1	< 1714.01	1.7	1717.86	0.75	1710.02	0.72	1720.33	2.0	1718.59
09/08/22	0.23	1711.24	0.54	1718.50	2.9	1721.09	5.6	1712.29	2.9	1711.24	1.0	< 1714.01	1.5	1718.21	0.72	< 1710.00	0.70	1720.33	2.0	1718.54
09/09/22	0.22	1711.24	0.53	1718.53	2.8	1721.08	5.6	1712.29	2.9	1711.13	1.1	< 1714.01	1.4	1718.58	0.71	< 1710.00	0.72	1720.33	2.0	1718.46
09/10/22	0.22	1711.24	0.58	1716.88	3.2	1721.06	5.6	1712.28	2.9	1710.67	1.0	< 1714.01	1.3	1718.84	0.70	< 1710.00	0.85	1720.31	2.0	1718.37
09/11/22	0.22	1711.24	0.66	1709.37	3.2	1721.05	5.6	1712.28	2.9	1710.74	1.0	< 1714.01	1.2	1719.11	0.69	< 1710.00	0.80	1720.31	2.0	1718.29
09/12/22	0.22	1711.24	0.65	1709.28	3.3	1721.05	5.6	1712.28	2.9	1711.23	1.0	< 1714.01	1.1	1719.26	0.69	< 1710.00	0.70	1720.33	2.0	1718.23
09/13/22	0.22	1711.24	0.70	1709.29	3.3	1721.05	5.6	1712.28	2.8	1711.34	1.0	< 1714.01	1.0	1719.49	0.69	< 1710.00	0.70	1720.33	2.0	1718.20
09/14/22	0.22	1711.24	0.71	1709.27	3.5	1721.04	5.6	1712.28	2.8	1711.38	1.0	< 1714.01	0.98	1719.63	0.70	< 1710.00	0.69	1720.33	2.0	1718.20
09/15/22	0.22	1711.27	0.66	1709.29	3.4	1721.04	5.6	1712.28	2.8	1711.45	1.0	< 1712.58	1.2	1719.12	0.58	< 1710.00	0.68	1720.33	2.0	1718.17
09/16/22	0.22	1711.27	0.62	1709.30	3.2	1721.03	5.6	1712.28	2.8	1711.52	1.0	< 1712.58	1.7	1718.11	0.58	1714.21	0.67	1720.33	2.0	1718.13
09/17/22	0.22	1711.27	0.61	1709.31	2.9	1721.18	5.6	1712.28	2.8	1711.63	1.0	< 1712.58	1.8	1717.64	0.87	1716.22	0.65	1720.35	2.0	1718.18
09/18/22	0.22	1711.24	0.58	1709.27	3.3	1721.02	5.6	1712.28	2.8	1711.71	1.1	< 1712.58	1.8	1717.51	0.93	1716.22	0.66	1720.33	2.0	1718.15
09/19/22 ²	0.23	1711.32	0.54	1715.16	3.0	1721.29	5.6	1707.36	2.8	1712.38	1.1	< 1712.58	1.7	1717.95	0.64	1716.79	0.77	1720.40	2.0	1718.52
09/20/22	0.22	1711.24	0.55	1716.99	3.3	1721.09	5.6	1707.36	2.8	1712.36	1.1	< 1712.58	1.6	1718.31	0.59	1716.45	0.73	1720.37	2.0	1718.50
09/21/22	0.22	1711.24	0.60	1711.79	3.0	1720.94	5.6	1707.36	2.8	1712.36	1.1	< 1712.58	2.0	1717.31	1.2	1717.10	0.69	1720.34	2.0	1718.37
09/22/22	0.22	1711.24	0.57	1715.24	3.4	1720.99	5.6	1707.33	2.7	1712.54	1.1	< 1712.33	2.0	1717.10	1.3	1717.49	0.65	1720.30	2.0	1718.31
09/23/22	0.22	1711.24	0.53	1717.03	3.4	1720.97	5.6	1707.33	2.7	1712.70	1.1	< 1712.33	1.9	1717.17	1.3	1717.42	0.67	1720.27	2.0	1718.26
09/24/22	0.22	1711.24	0.40	1718.90	3.4	1720.96	5.6	1707.33	2.7	1712.77	1.1	< 1712.33	1.7	1717.61	0.96	1711.15	0.63	1720.26	1.9	1718.35
09/25/22	0.22	1711.23	0.36	1719.41	3.4	1720.95	5.6	1707.33	2.7	1712.91	1.1	< 1712.33	1.7	1717.80	0.94	< 1710.00	0.63	1720.27	1.9	1718.38
09/26/22	0.22	1711.24	0.39	1719.47	3.4	1720.95	5.6	1707.33	2.7	1712.91	1.1	< 1712.33	1.7	1717.92	0.96	< 1710.00	0.65	1720.27	1.9	1718.39
09/27/22	0.22	1711.24	0.37	1719.49	3.3	1720.95	5.6	1707.33	2.7	1712.86	1.1	< 1712.33	1.6	1718.03	0.98	< 1710.00	0.72	1720.28	1.9	1718.43
09/28/22	0.22	1711.24	0.35	1719.52	3.4	1720.95	5.6	1707.33	2.7	1712.89	1.1	< 1712.33	1.6	1718.14	0.99	< 1710.00	0.74	1720.28	1.9	1718.51
09/29/22	0.22	1711.24	0.37	1719.55	3.4	1720.96	5.6	1707.37	2.7	1712.92	1.1	< 1712.28	1.6	1718.29	0.96	< 1710.00	0.76	1720.29	1.9	1718.58
09/30/22	0.22	1711.24	0.55	1714.42	3.4	1720.96	5.6	1707.37	2.7	1712.90	1.1	< 1712.28	1.9	1717.50	1.4	< 1710.00	0.74	1720.30	1.9	1718.57
Monthly Average	0.22	1711.25	0.54	1714.49	3.2	1721.06	5.6	1710.36	2.8	1711.58	1.1	< 1713.27	1.6	1717.97	0.87	1713.02	0.70	1720.34	2.0	1718.45
Analytical ¹	Conc (mg/L)	Date	Conc (mg/L)	Date	Conc (mg/L)	Date	Conc (mg/L)	Date	Conc (mg/L)	Date	Conc (mg/L)	Date	Conc (mg/L)	Date	Conc (mg/L)	Date	Conc (mg/L)	Date	Conc (mg/L)	Date
Perchlorate	870	9/9/2022	640	9/9/2022	360	9/7/2022	160	9/7/2022	230	9/7/2022	240	9/1/2022	520	9/1/2022	400	9/1/2022	530	9/9/2022	590	9/9/2022
Hexavalent Chromium	17	9/9/2022	11	9/9/2022	6.6	9/7/2022	3.6	9/7/2022	2.5	9/7/2022	1.4	9/1/2022	5.4	9/1/2022	6.9	9/1/2022	9.8	9/9/2022	10	9/9/2022
Total Chromium	18	9/9/2022	12	9/9/2022	6.1	9/7/2022	3.6	9/7/2022	2.6	9/7/2022	1.3	9/1/2022	4.9	9/1/2022	6.8	9/1/2022	10	9/9/2022	10	9/9/2022

- Notes:
- Flow reported as gpm is a daily average calculated from the totalizer reading.
 - 1: Analytical results are reported from Eurofins TestAmerica.
 - 2: On 09/04 and 09/19, IWF offline due to maintenance.
 - 3: On 09/15, I-AD, I-B, I-D, and I-M adjusted to meet flow targets as directed by the Trust.
 - 5: On 09/05, I-B, I-D, I-E, I-F, I-H, I-M, I-N, I-O, I-Q, I-R, I-W, and I-X adjusted to meet flow targets as directed by the Trust.
 - 6: On 9/10, I-C, I-D, I-H, I-O, I-Q, and I-R adjusted to meet flow targets as directed by the Trust.
 - 7: On 09/02, I-D, I-M, I-N, and I-O adjusted to meet flow targets as directed by the Trust.
 - 8: On 9/18, I-D, I-H, I-M, I-N, and I-U adjusted to meet flow targets as directed by the Trust.
 - 9: On 9/20, I-D, I-H, I-M, I-N, I-Q, and I-R adjusted to meet flow targets as directed by the Trust.
 - 10: On 9/30, I-D, I-E, I-H, I-M, I-N, and I-R adjusted to meet flow targets as directed by the Trust.
 - 11: On 09/15, I-G water level taken manually due to water level dropping below transducer level.
 - 12: On 09/19 and 09/21, I-I offline intermittently due to maintenance.
 - 13: On 09/22 and 9/29, I-J water level taken manually due to a transducer failure on 9/19.
 - 14: On 09/15, 09/22, and 9/29, I-L water level taken manually due to water level dropping below transducer level.
 - 15: On 09/16, I-N and I-Q adjusted to meet flow targets as directed by the Trust.

Nevada Environmental Response Trust Groundwater Extraction and Treatment System Enhanced Operational Metrics																				
Date	I-Q		I-R		I-S		I-T		I-U		I-V		I-W		I-X		I-Y		I-Z	
	Flow (gpm)	Water Elevation (ft amsl)	Flow (gpm)	Water Elevation (ft amsl)	Flow (gpm)	Water Elevation (ft amsl)	Flow (gpm)	Water Elevation (ft amsl)	Flow (gpm)	Water Elevation (ft amsl)	Flow (gpm)	Water Elevation (ft amsl)	Flow (gpm)	Water Elevation (ft amsl)	Flow (gpm)	Water Elevation (ft amsl)	Flow (gpm)	Water Elevation (ft amsl)	Flow (gpm)	Water Elevation (ft amsl)
09/01/22	0.27	1714.95	0.99	1710.51	1.4	1709.34	0.70	1707.51	0.75	1707.63	4.2	1717.95	0.63	1716.34	3.0	1703.68	1.2	1699.94	5.5	1709.98
09/02/22	0.27	1714.95	0.98	1710.70	1.3	1710.34	0.70	1707.51	0.75	1707.63	4.1	1717.92	0.64	1715.57	3.0	1703.60	1.2	1699.94	5.1	1709.98
09/03/22	0.27	1714.94	0.97	1710.76	1.3	1710.25	0.70	1707.51	0.74	1707.63	4.0	1717.87	0.64	1715.05	3.0	1703.47	1.2	1699.94	5.0	1709.98
09/04/22 ²	0.22	1715.39	0.88	1712.10	0.76	1714.60	0.68	1708.13	0.67	1709.24	3.7	1718.37	0.56	1716.62	2.7	1707.83	1.2	1705.76	5.0	1710.79
09/05/22	0.21	1715.87	0.87	1712.90	1.0	1715.14	0.71	1707.54	0.66	1710.56	4.0	1718.08	0.60	1718.02	2.8	1711.92	1.3	1699.94	5.4	1709.98
09/06/22	0.21	1715.66	0.84	1713.99	1.5	1708.74	0.71	1707.54	0.76	1707.63	4.0	1717.89	0.66	1714.23	3.0	1707.39	1.3	1699.94	5.2	1709.98
09/07/22	0.19	1715.77	0.76	1714.60	1.5	1708.32	0.70	1707.54	0.76	1707.65	4.0	1717.80	0.66	1713.37	3.0	1706.72	1.3	1699.94	5.0	1709.98
09/08/22	0.18	1715.88	0.76	1714.79	1.5	1708.21	0.70	1707.54	0.76	1707.68	4.0	1717.77	0.66	1713.06	3.0	1706.44	1.3	1700.05	5.0	1710.00
09/09/22	0.18	1715.86	0.77	1714.90	1.5	1708.09	0.70	1707.54	0.76	1707.71	4.0	1717.74	0.67	1712.51	3.0	1706.25	1.3	1700.05	5.1	1710.00
09/10/22	0.21	1715.57	0.88	1714.12	1.5	1708.01	0.70	1707.53	0.74	1707.70	4.3	1717.67	0.67	1711.24	3.0	1706.00	1.3	1700.05	6.0	1710.00
09/11/22	0.28	1714.79	1.1	1711.25	1.5	1708.00	0.70	1707.53	0.74	1707.79	4.3	1717.63	0.67	1710.90	3.1	1706.01	1.2	1700.05	6.4	1710.00
09/12/22	0.26	1715.03	1.0	1711.79	1.5	1708.02	0.70	1707.53	0.73	1708.73	4.3	1717.61	0.67	1710.74	3.1	1705.94	1.2	1700.05	6.4	1710.00
09/13/22	0.26	1715.10	1.0	1711.86	1.5	1708.10	0.70	1707.54	0.72	1708.99	4.3	1717.61	0.67	1711.10	3.1	1705.92	1.2	1700.05	6.3	1710.00
09/14/22	0.25	1715.14	0.97	1712.35	1.5	1708.29	0.70	1707.53	0.67	1709.38	4.3	1717.58	0.66	1711.32	3.1	1706.19	1.3	1700.05	6.4	1710.00
09/15/22	0.25	1715.18	0.99	1712.44	1.5	1708.61	0.70	1707.54	0.65	1709.94	4.3	1717.57	0.66	1711.17	3.1	1706.40	1.3	1700.12	6.3	1710.08
09/16/22	0.26	1715.06	1.0	1712.43	1.5	1708.79	0.70	1707.54	0.63	1710.26	4.3	1717.55	0.66	1710.23	3.1	1707.30	1.3	1700.12	6.1	1710.08
09/17/22	0.30	1714.56	1.0	1712.33	1.5	1708.74	0.70	1707.54	0.65	1710.65	4.3	1717.69	0.66	1710.15	3.0	1706.73	1.2	1700.12	6.3	1710.08
09/18/22	0.29	1714.63	0.98	1712.63	1.5	1708.25	0.70	1707.54	0.68	1709.99	4.3	1717.56	0.66	1710.20	3.0	1706.21	1.2	1700.12	6.3	1710.08
09/19/22 ²	0.20	1715.65	0.69	1715.74	1.6	1706.87	0.71	1707.94	0.76	1708.03	4.3	1718.10	0.63	1713.93	3.0	1709.74	1.3	1700.12	6.5	1710.08
09/20/22	0.18	1715.92	0.61	1716.42	1.7	1706.50	0.70	1707.58	0.75	1707.67	4.3	1717.80	0.66	1712.26	3.0	1710.89	1.3	1700.12	6.5	1710.08
09/21/22	0.26	1715.16	0.85	1714.56	1.6	1706.49	0.69	1707.58	0.74	1707.69	4.3	1717.76	0.66	1711.31	3.0	1709.72	1.3	1700.12	6.4	1710.08
09/22/22	0.25	1715.22	0.87	1713.71	1.6	1706.49	0.69	1707.57	0.74	1707.69	4.3	1717.56	0.66	1710.60	3.0	1707.74	1.2	1700.07	6.4	1709.97
09/23/22	0.24	1715.27	0.87	1714.38	1.6	1706.49	0.69	1707.57	0.74	1707.72	4.3	1717.50	0.68	1710.14	2.9	1707.11	1.2	1700.07	6.2	1709.97
09/24/22	0.18	1715.77	0.42	1717.33	1.6	1706.48	0.69	1707.56	0.74	1707.72	4.3	1717.46	0.70	1710.01	2.9	1707.96	1.3	1700.07	6.4	1709.97
09/25/22	0.17	1715.88	0.30	1717.90	1.6	1706.48	0.69	1707.55	0.74	1707.72	4.3	1717.45	0.71	1710.01	2.9	1708.49	1.3	1700.07	6.4	1709.97
09/26/22	0.18	1715.87	0.32	1717.91	1.6	1706.50	0.69	1707.55	0.75	1707.71	4.3	1717.45	0.71	1710.01	2.9	1708.54	1.3	1700.07	6.4	1709.97
09/27/22	0.18	1715.88	0.29	1717.94	1.6	1706.50	0.69	1707.56	0.76	1707.92	4.3	1717.45	0.71	1710.02	2.9	1708.43	1.3	1700.07	6.4	1709.97
09/28/22	0.18	1715.85	0.27	1717.94	1.6	1706.51	0.69	1707.55	0.73	1708.78	4.3	1717.43	0.71	1710.02	2.9	1708.76	1.3	1700.07	6.4	1709.97
09/29/22	0.18	1715.88	0.33	1717.95	1.6	1706.50	0.69	1707.56	0.73	1708.77	4.3	1717.45	0.72	1710.02	2.9	1708.90	1.3	1700.10	6.4	1709.99
09/30/22	0.18	1715.92	1.0	1714.29	1.6	1706.51	0.70	1707.56	0.70	1709.35	4.3	1717.47	0.72	1710.02	2.9	1708.48	1.3	1700.10	6.2	1709.99
Monthly Average	0.22	1715.42	0.79	1714.08	1.5	1708.21	0.70	1707.58	0.72	1708.45	4.2	1717.69	0.67	1712.01	3.0	1707.29	1.3	1700.24	6.0	1710.03
Analytical ¹	Conc (mg/L)	Date	Conc (mg/L)	Date	Conc (mg/L)	Date	Conc (mg/L)	Date	Conc (mg/L)	Date	Conc ¹⁶ (mg/L)	Date	Conc (mg/L)	Date	Conc (mg/L)	Date	Conc (mg/L)	Date	Conc (mg/L)	Date
Perchlorate	640	9/9/2022	560	9/1/2022	320	9/1/2022	810	9/9/2022	800	9/9/2022	490	9/7/2022	420	9/9/2022	560	9/1/2022	310	9/1/2022	260	9/7/2022
Hexavalent Chromium	14	9/9/2022	0.89	9/1/2022	1.6	9/1/2022	14	9/9/2022	12	9/9/2022	6.6	9/7/2022	11	9/9/2022	8.4	9/1/2022	1.3	9/1/2022	4.5	9/7/2022
Total Chromium	13	9/9/2022	0.82	9/1/2022	1.6	9/1/2022	15	9/9/2022	14	9/9/2022	6.3	9/7/2022	9.6	9/9/2022	8.2	9/1/2022	1.2	9/1/2022	5.0	9/7/2022

Notes:
 1: Analytical results are reported from Eurofins TestAmerica.
 2: On 09/04 and 09/19, IWF offline due to maintenance.
 5: On 09/05, I-B, I-D, I-E, I-F, I-H, I-M, I-N, I-O, I-R, I-W, and I-X adjusted to meet flow targets as directed by the Trust.
 6: On 9/10, I-C, I-D, I-H, I-O, I-Q, and I-R adjusted to meet flow targets as directed by the Trust.
 8: On 9/18, I-D, I-H, I-M, I-N, and I-U adjusted to meet flow targets as directed by the Trust.
 9: On 9/20, I-D, I-H, I-M, I-N, I-Q, and I-R adjusted to meet flow targets as directed by the Trust.
 10: On 9/30, I-D, I-E, I-H, I-M, I-N, and I-R adjusted to meet flow targets as directed by the Trust.
 15: On 09/16, I-N and I-Q adjusted to meet flow targets as directed by the Trust.
 16: Duplicates taken on 09/07 for well I-V; average of both values is presented and used for calculations.
 17: On 09/01, 09/08, 09/15, 9/22, and 09/29, I-Y and I-Z water level taken manually due to water level dropping below transducer level.

Nevada Environmental Response Trust Groundwater Extraction and Treatment System Enhanced Operational Metrics																
Date	LS #2	GWTP Effluent ¹				GW-11 Influent ¹				FBR Plant Influent ¹						
	Flow (gpm)	Flow (gpm)	TA - Cr (TR) (mg/L)	TA - Cr (VI) (mg/L)	TA - ClO ₂ (mg/L)	Flow (gpm)	TA - Cr (TR) (mg/L)	TA - Cr (VI) (mg/L)	TA - ClO ₂ (mg/L)	Flow (gpm)	TA - ClO ₂ (mg/L)	ETI - ClO ₂ (mg/L)	TA - ClO ₂ (mg/L)	TA - NO ₂ - N (mg/L)	TA - Cr (TR) (mg/L)	TA - Cr (VI) (mg/L) ⁴
09/01/22	849	63				0.0				912		56				
09/02/22	848	62				0.0				910		58				
09/03/22	852	62				0.0				914	53	58				
09/04/22	857	55				0.0				913		58				
09/05/22	846	56				0.0				902		53				
09/06/22 ³	847	59				397				509		NA				
09/07/22 ³	847	59	0.45	0.00070 J	370	894	0.12	0.042	57	0.0		NA				
09/08/22	847	62				436				473		58				
09/09/22	846	62				0.0				909		59				
09/10/22	845	61				0.0				906	52	59				
09/11/22	846	60				0.0				906		55				
09/12/22	841	61				0.0				902		59				
09/13/22	842	58				0.0				900		60	110	11	0.080 B	0.038
09/14/22	846	65	0.45	0.00078 J	410	0.0				911		59				
09/15/22	846	61				0.0				907		53				
09/16/22	846	62				0.0				908		56				
09/17/22	845	61				0.0				907	56	53				
09/18/22	846	61				0.0				907		51				
09/19/22	841	55				0.0				896		52		11	0.064	NA
09/20/22	849	62				0.0				911		55				
09/21/22	849	58	0.27	ND	400	0.0				907		55				
09/22/22	848	62				0.0				911		56				
09/23/22	848	62				0.0				910		55				
09/24/22	848	61				0.0				918	54	55				
09/25/22	848	60				0.0				918		56				
09/26/22	846	61				0.0				936		48		11	0.083	ND
09/27/22	848	62				0.0				923		56				
09/28/22	848	62	ND	ND	420	120				916		56				
09/29/22	847	61				0.0				909		60				
09/30/22	848	62				0.0				912		58				
Monthly Average ²	847	61	0.32	0.00042	398	62	0.12	0.042	57	852	54	55	110	11	0.08	0.024

Notes:
 Flow reported as gpm is a daily average calculated from the totalizer reading. The only exceptions are the instantaneous flow readings recorded for the 1st and 2nd Stage FBR flows.
 NA = Not analyzed
 ND = Not detected above laboratory method detection limit (ClO₄ = 0.5 ug/L; ClO₃ = 10 ug/L; NO₃-N= 0.055 mg/L; Cr(VI) = 0.25 ug/L).
 J = Result is less than the reporting limit but greater than or equal to the method detection limit and the concentration is an approximate value.
 B = Compound was found in the blank and sample.
 1: ETI = Envirogen internal process control data, TA = Eurofins TestAmerica data.
 2: All average concentrations reported are monthly flow weighted averages.
 3: From 09/06 to 09/07, FBR Treatment Plant offline due to maintenance; flow from well fields diverted to GW-11 Pond.
 4: On 09/19, the sample hold time for hexavalent chromium was exceeded for the FBR influent and effluent samples.

Table 4 - Treatment Plant Operational Metrics

Nevada Environmental Response Trust Groundwater Extraction and Treatment System Enhanced Operational Metrics														
Date	1st Stage FBR ⁵			2nd Stage FBR ⁵			FBR Plant Effluent ¹							
	Flow (gpm)	pH (s.u.)	ORP (mV)	Flow (gpm)	pH (s.u.)	ORP (mV)	Flow ⁶ (gpm)	TA - ClO ₂ (mg/L)	ETI - ClO ₄ (mg/L)	TA - ClO ₃ (mg/L)	TA - Cr (TR) (mg/L)	TA - Cr (VI) (mg/L) ⁴	TA - NO ₂ - N (mg/L)	ETI - Turbidity (NTU)
09/01/22	951	6.8	-378	545	6.5	-420	799		0.0					7.0
09/02/22	785	6.8	-374	294	6.5	-425	820		0.0					8.0
09/03/22	853	6.8	-394	972	6.5	-428	797	ND	0.0					8.0
09/04/22	863	6.9	-416	604	6.6	-444	623		0.0					12
09/05/22	834	6.8	-392	623	6.5	-444	686		0.0					13
09/06/22 ³	0.0	NA	NA	0.0	NA	NA	253		NA					NA
09/07/22 ³	0.0	NA	NA	0.0	NA	NA	0.0		NA					NA
09/08/22	494	7.0	-352	102	6.7	-420	389		0.0					37
09/09/22	596	7.0	-386	171	6.5	-438	23		0.0					35
09/10/22	610	7.0	-410	82	6.5	-442	845	ND	0.0					17
09/11/22	593	6.8	-1048	475	6.8	-444	938		0.0					15
09/12/22	947	6.7	-225	807	6.3	-425	938		0.0					40
09/13/22	940	6.7	-261	831	6.5	-419	942		0.0	ND	0.031 B	ND	ND	29
09/14/22	941	6.7	-353	725	6.5	-421	949		0.0					28
09/15/22	956	6.8	-363	851	6.5	-422	888		0.0					25
09/16/22	936	6.7	-372	784	6.5	-420	906		0.0					16
09/17/22	941	6.7	-309	813	6.5	-420	929	0.0060	0.0					13
09/18/22	944	6.7	-356	853	6.7	-421	889		0.0					21
09/19/22	982	6.7	-249	763	6.7	-417	1016		0.0		0.011		0.014 J	11
09/20/22	965	6.7	-227	826	6.7	-418	938		0.0					10
09/21/22	954	6.7	-253	755	6.7	-421	936		0.0					18
09/22/22	922	6.7	-358	887	6.6	-423	904		0.0					18
09/23/22	999	6.7	-381	710	6.5	-421	934		0.0					15
09/24/22	966	6.7	-242	825	6.5	-418	950	ND	0.0					14
09/25/22	1008	6.7	-375	762	6.5	-422	943		0.0					15
09/26/22	991	6.7	-369	904	6.5	-425	943		0.0		0.0074 J	ND	0.12	17
09/27/22	967	6.7	-257	698	6.5	-420	934		0.0					20
09/28/22	971	6.7	-326	888	6.5	-424	691		0.0					21
09/29/22	982	6.7	-336	754	6.5	-400	915		0.0					22
09/30/22	994	6.7	-349	882	6.5	-401	943		0.0					17
Monthly Average ²	829	6.7	-349	640	6.5	-422	789	0.0017	ND	ND	0.019	ND	0.040	18

Notes:

Flow reported as gpm is a daily average calculated from the totalizer reading. The only exceptions are the instantaneous flow readings recorded for the 1st and 2nd Stage FBR flows.

ND = Not detected above laboratory method detection limit (ClO₂ = 0.5 ug/L; ClO₃ = 10 ug/L; NO₂-N = 0.055 mg/L; Cr(VI) = 0.25 ug/L).

J = Result is less than the reporting limit but greater than or equal to the method detection limit and the concentration is an approximate value.

B = Compound was found in the blank and sample.

NA = Not analyzed

1: ETI = Envirogen internal process control data, TA = Eurofins TestAmerica data.

2: All average concentrations reported are monthly flow weighted averages.

3: From 09/06 to 09/07, FBR Treatment Plant offline due to maintenance; flow from well fields diverted to GW-11 Pond.

4: On 09/19, the sample hold time for hexavalent chromium was exceeded for the FBR influent and effluent samples.

5: For 1st and 2nd stage FBRs, flow measurements are collected from the influent lines and pH and ORP samples are collected from the recycle lines.

6: FBR Plant Effluent represents effluent discharged to Las Vegas Wash. While this may represent the entirety of the FBR Plant effluent, any diversions to GW-11 are subtracted from the original effluent flow.

GW-11 Level Monitoring ¹		
Date	Field Measurement (ft)	Volume (MG)
09/15/22	27.3	40.1
09/30/22	28.0	39.3

GW-11 Leak Detection Monitoring				
Date	Amount Pumped ² (gallons)			
	NW Corner	NE Corner	SW Corner	SE Corner
09/13/22	0.0	0.0	707	0.0
09/27/22	0.0	0.0	459	0.0

GW-11 Composite Sample ³		
Analytes	Concentration	Units
Perchlorate	0.63	mg/L
Chlorate	0.18	mg/L
Ammonia as N	ND	mg/L
Total Phosphorus	3.5	mg/L
Total Dissolved Solids (TDS)	17000 D	mg/L
Total Suspended Solids (TSS)	63	mg/L
pH	8.2 HF	s.u.
Calcium	850	mg/L
Iron	0.24	mg/L
Chromium (total)	0.0011	mg/L
Chromium VI	ND	mg/L
Chloride	6,600	mg/L
Nitrate as N	ND	mg/L
Sulfate	5,500	mg/L

Notes:

D = Result was obtained from the analysis of a dilution.

HF = Field parameter with a holding time of 15 minutes. Test performed by laboratory at client's request.

1: A transducer installed along the eastern berm provides water pressure measurements that are correlated to elevations for calculation of water depths.

2: Pumping occurs over three consecutive days. The total amount pumped over the three day period is listed with the last day pumping occurred.

3: GW-11 Corner Composite Sample is collected quarterly, most recent sampling results are presented. Sampled on: August 26, 2022.

Nevada Environmental Response Trust Groundwater Extraction and Treatment System Enhanced Operational Metrics						
Date	Flow ¹ (gpm)	FBR Influent Concentration			Influent Function Load ² (lbs/day)	6 Month Rolling Average (lbs/day)
		ClO ₄ (mg/L)	NO ₃ as N (mg/L)	ClO ₃ (mg/L)		
Oct 2021	924	66	11	120	464	475
Nov 2021	879	49	10	120	406	473
Dec 2021	934	42	10	110	391	471
Jan 2022	992	58	11	120	481	457
Feb 2022	1,050	56	18	110	563	466
Mar 2022	1,022	50	20	110	556	477
Apr 2022	957	59	17	110	509	485
May 2022	944	56	14	110	471	495
June 2022	921	52	12	110	430	502
July 2022	912	50	12	100	402	488
Aug 2022	911	50	11	120	429	466
Sep 2022	852	54	11	110	392	439

Notes:

Concentrations and flow are presented as monthly average.

1: Flow used in loading calculation is average monthly FBR influent flow.

2: FBR loading calculated as $[(0.9 \cdot \text{NO}_3 \text{ as N} + 0.17 \cdot \text{ClO}_3 + 0.18 \cdot \text{ClO}_4) \cdot \text{Flow} \cdot 1440 / 1000000 \cdot 8.34]$.

Nevada Environmental Response Trust Groundwater Extraction and Treatment System Enhanced Operational Metrics																
Date	E1-1		E1-2		E1-3		E2-1		E2-2		E2-3		E2-4		E2-5	
	Flow (gpm)	Water Elevation (ft amsl)	Flow (gpm)	Water Elevation (ft amsl)	Flow (gpm)	Water Elevation (ft amsl)	Flow (gpm)	Water Elevation (ft amsl)	Flow (gpm)	Water Elevation (ft amsl)	Flow (gpm)	Water Elevation (ft amsl)	Flow (gpm)	Water Elevation (ft amsl)	Flow (gpm)	Water Elevation (ft amsl)
09/01/22	3.0	1711.52	0.85	1710.81	0.88	1711.95	1.2	1712.81	0.93	1715.26	1.1	1715.90	1.0	1716.06	0.36	1710.87
09/02/22	3.1	1711.43	0.84	1711.25	0.87	1711.70	1.2	1712.47	0.94	1715.77	1.1	1716.60	1.1	1720.81	0.38	1710.62
09/03/22	3.1	1711.33	0.83	1710.92	0.83	1711.72	1.2	1712.74	0.94	1715.72	1.1	1716.27	1.2	1715.66	0.38	1710.67
09/04/22 ²	3.1	1711.48	0.81	1711.11	0.91	1711.89	1.1	1712.70	0.94	1716.27	1.1	1716.14	1.1	1715.57	0.39	1710.90
09/05/22	2.7	1717.38	0.89	1709.84	0.58	1715.69	1.3	1712.92	0.69	1718.38	0.96	1718.45	1.1	1716.76	0.41	1710.22
09/06/22	2.6	1717.23	0.91	1711.07	0.67	1716.52	1.3	1713.43	0.69	1719.34	0.95	1718.76	1.1	1716.80	0.34	1710.60
09/07/22	2.7	1717.33	0.92	1710.46	0.67	1718.11	1.3	1713.28	0.69	1719.77	0.97	1719.11	1.1	1716.99	0.43	1711.02
09/08/22	2.7	1716.21	0.91	1709.35	0.66	1716.17	1.2	1712.56	0.94	1713.26	0.93	1718.10	1.1	1716.35	0.41	1710.50
09/09/22	2.8	1715.47	0.90	1708.70	0.94	1716.29	1.3	1712.40	0.84	1713.41	0.94	1718.05	1.1	1715.59	0.36	1710.56
09/10/22	2.9	1716.22	0.86	1708.67	0.88	1716.48	1.2	1712.61	0.9	1713.28	0.84	1718.24	1.1	1715.97	0.33	1710.44
09/11/22	2.8	1715.97	0.81	1709.05	0.86	1716.68	1.3	1712.34	0.91	1713.50	0.77	1717.87	1.1	1716.73	0.33	1710.51
09/12/22	2.8	1715.71	0.81	1709.17	0.86	1716.53	1.3	1712.52	0.91	1713.20	0.77	1717.84	1.1	1715.69	0.33	1710.40
09/13/22	2.8	1715.73	0.90	1709.10	0.85	1716.51	1.1	1712.60	0.86	1713.07	0.73	1717.88	1.1	1715.60	0.42	1710.34
09/14/22	2.9	1715.10	0.74	1712.89	0.85	1713.41	1.2	1712.94	0.89	1716.82	0.75	1721.21	1.1	1716.71	0.35	1712.90
09/15/22	3.1	1713.15	0.79	1712.11	0.98	1712.98	1.2	1715.11	0.87	1718.65	0.84	1720.50	1.0	1717.83	0.33	1713.93
09/16/22	3.1	1713.11	0.75	1712.16	0.90	1713.14	1.2	1714.89	1.1	1716.25	0.89	1719.69	1.0	1717.59	0.28	1713.83
09/17/22	3.0	1713.41	0.75	1712.97	0.89	1713.20	1.2	1715.34	1.0	1716.01	1.1	1717.92	1.0	1717.49	0.29	1713.95
09/18/22	3.1	1712.95	0.76	1713.42	0.89	1713.07	1.2	1715.18	1.1	1716.41	1.0	1718.34	0.99	1718.14	0.29	1713.76
09/19/22	3.1	1713.07	0.72	1713.35	0.85	1713.16	1.2	1714.41	1.0	1715.66	1.0	1718.03	1.0	1718.01	0.29	1713.87
09/20/22	3.0	1713.01	0.71	1713.17	0.88	1713.01	1.2	1714.07	1.0	1715.07	0.99	1717.98	1.0	1718.04	0.29	1713.34
09/21/22	3.1	1713.04	0.79	1713.11	0.93	1713.10	1.2	1713.96	1.0	1715.01	1.0	1717.95	1.0	1717.99	0.27	1714.77
09/22/22	3.0	1712.88	0.73	1712.99	0.89	1712.94	1.1	1714.12	0.97	1714.71	0.98	1717.29	1.0	1716.76	0.26	1713.60
09/23/22	3.1	1712.67	0.71	1712.96	0.83	1712.70	1.1	1714.16	0.99	1714.35	1.00	1716.19	0.98	1716.06	0.22	1712.50
09/24/22	3.2	1713.34	0.77	1713.10	0.99	1712.58	1.3	1714.41	1.0	1713.81	1.0	1715.91	1.0	1716.01	0.24	1713.41
09/25/22	3.1	1712.89	0.75	1712.52	0.90	1712.01	1.1	1714.26	0.90	1714.34	1.00	1716.15	1.0	1716.22	0.34	1712.84
09/26/22	3.1	1711.83	0.65	1712.49	0.90	1712.04	1.2	1713.88	0.91	1715.27	0.99	1715.92	1.0	1716.72	0.28	1714.10
09/27/22	3.2	1711.80	0.66	1712.62	0.91	1711.92	1.2	1713.77	0.91	1714.66	0.99	1715.77	1.0	1716.76	0.36	1714.01
09/28/22	3.2	1711.83	0.75	1712.03	0.91	1711.72	1.2	1715.35	0.88	1716.43	0.98	1718.17	1.0	1714.71	0.33	1714.82
09/29/22	3.1	1711.46	0.86	1711.48	0.93	1712.06	1.2	1715.77	0.92	1716.00	0.96	1718.25	1.1	1715.55	0.21	1714.00
09/30/22	3.2	1711.01	0.71	1711.26	0.88	1711.98	1.1	1716.26	0.92	1716.28	0.92	1718.24	1.0	1716.48	0.29	1714.10
Monthly Average	3.0	1713.65	0.80	1711.47	0.86	1713.71	1.2	1713.77	0.92	1715.54	0.95	1717.76	1.1	1716.72	0.33	1712.38
Analytical ¹	Conc (mg/L)	Date	Conc (mg/L)	Date	Conc (mg/L)	Date	Conc (mg/L)	Date	Conc (mg/L)	Date	Conc ² (mg/L)	Date	Conc (mg/L)	Date	Conc (mg/L)	Date
Perchlorate	480	9/9/2022	1,000	9/9/2022	340	9/9/2022	110	9/9/2022	380	9/9/2022	845	9/9/2022	880	9/9/2022	1,100	9/9/2022
Hexavalent Chromium	0.088	9/9/2022	0.58	9/9/2022	0.64	9/9/2022	0.029	9/9/2022	0.028	9/9/2022	0.087	9/9/2022	0.093	9/9/2022	0.23	9/9/2022
Total Chromium	0.081	9/9/2022	0.55	9/9/2022	0.61	9/9/2022	0.029	9/9/2022	0.041	9/9/2022	0.080	9/9/2022	0.083	9/9/2022	0.23	9/9/2022

Notes:
 Flow reported as gpm is a daily average calculated from the totalizer reading.
 The flow rate at individual wells is adjusted daily to maintain the water level in the wells above the pump.
 1: Analytical results are reported from Eurofins TestAmerica.
 2: On 09/04, AP wells offline briefly.
 3: Duplicates taken on 09/09 for well E2-3; average of both values is presented and used for calculations.

Figure 1 - GW-11 Pond Volume and FBR Influent Perchlorate Concentration

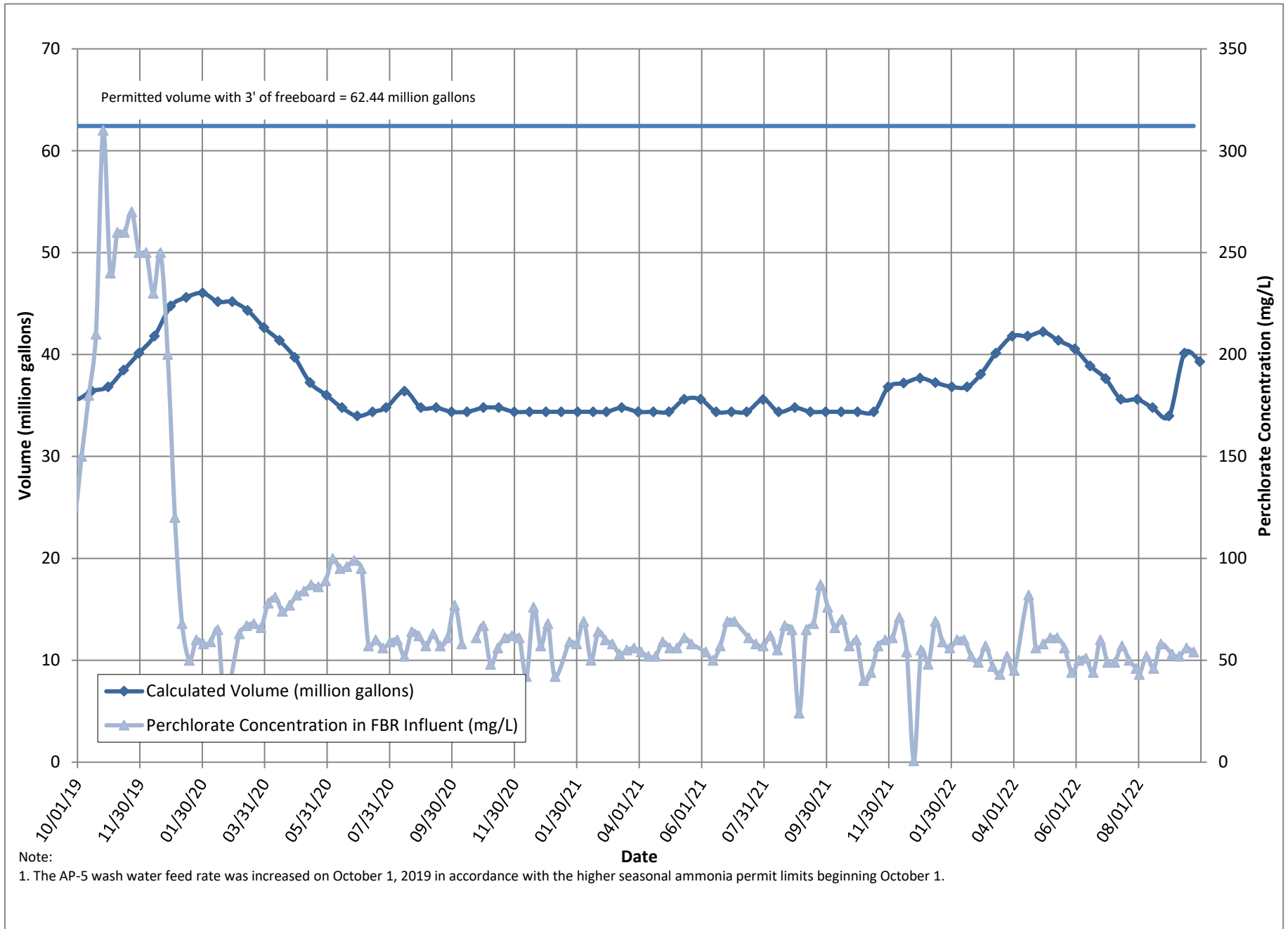


Figure 2 - FBR Equivalent Loading Calculation

