

Table 1 - Seep Well Field (SWF) Operational Metrics

Nevada Environmental Response Trust   Groundwater Extraction and Treatment System   Enhanced Operational Metrics																											
Date	LS #1 Flow (gpm)	PC-116R (East Well)		PC-99R2/R3 (Center Well)		PC-115R (West Well)		PC-117		PC-118		PC-119		PC-120		PC-121		PC-133									
		Flow <sup>2</sup> (gpm)	Water Elevation (ft amsl)	Flow (gpm)	Water Elevation (ft amsl)	Flow (gpm)	Water Elevation (ft amsl)	Flow (gpm)	Water Elevation (ft amsl)	Flow <sup>4</sup> (gpm)	Water Elevation (ft amsl)	Flow <sup>5,6</sup> (gpm)	Water Elevation (ft amsl)	Flow <sup>5,6</sup> (gpm)	Water Elevation (ft amsl)	Flow (gpm)	Water Elevation (ft amsl)	Flow (gpm)	Water Elevation (ft amsl)								
06/01/22	481	129	1539.63	84	1539.66	114	1543.78	91	1536.28	68	1548.02	109	1548.68	118	1547.70	34	1550.31	6.9	< 1520.00								
06/02/22	474	144	1538.43	84	1539.55	122	1543.42	99	1535.14	70	1548.00	109	1548.75	85	1548.78	27	1550.69	6.9	< 1520.00								
06/03/22	467	159	1537.22	84	1540.35	130	1543.04	107	1533.95	72	1547.99	109	1548.85	51	1549.90	21	1551.09	6.9	< 1520.00								
06/04/22	465	159	1537.17	84	1540.90	130	1543.00	107	1533.88	72	1547.99	109	1548.82	51	1549.88	21	1551.07	6.8	< 1520.00								
06/05/22	465	159	1537.10	84	1540.85	130	1542.96	107	1533.83	71	1547.98	109	1548.80	51	1549.86	21	1551.05	6.7	< 1520.00								
06/06/22	466	159	1537.04	84	1540.81	130	1542.93	107	1533.78	71	1547.97	109	1548.77	51	1549.83	21	1551.02	6.7	< 1520.00								
06/07/22	466	159	1536.99	84	1540.80	130	1542.90	107	1533.74	71	1547.97	109	1548.75	51	1549.81	21	1551.00	6.6	< 1520.00								
06/08/22	465	159	1536.94	84	1540.81	130	1542.88	107	1533.69	70	1547.98	109	1548.72	51	1549.78	21	1550.97	6.5	< 1520.00								
06/09/22	465	159	1536.89	84	1540.84	130	1542.85	107	1533.66	70	1547.98	109	1548.70	51	1549.76	21	1550.95	6.5	< 1520.00								
06/10/22	465	159	1536.85	84	1540.86	130	1542.83	107	1533.63	69	1547.98	109	1548.68	51	1549.74	21	1550.93	6.5	< 1520.00								
06/11/22	465	159	1536.80	84	1540.86	130	1542.80	107	1533.59	69	1547.98	109	1548.66	51	1549.72	21	1550.91	6.5	< 1520.00								
06/12/22	465	159	1536.76	83	1540.85	130	1542.78	107	1533.56	69	1547.96	109	1548.64	51	1549.70	21	1550.89	6.3	< 1520.00								
06/13/22	465	159	1536.71	83	1540.60	130	1542.75	107	1533.53	69	1547.91	109	1548.62	51	1549.68	21	1550.87	6.2	< 1520.00								
06/14/22	465	159	1536.69	83	1540.66	130	1542.73	106	1533.51	69	1547.91	109	1548.59	51	1549.66	21	1550.85	6.2	< 1520.00								
06/15/22	465	159	1536.66	83	1540.68	130	1542.72	106	1533.49	69	1547.91	109	1548.58	51	1549.64	21	1550.83	6.2	< 1520.00								
06/16/22	465	159	1536.63	83	1540.68	130	1542.70	107	1533.48	69	1547.91	109	1548.57	51	1549.63	21	1550.82	6.1	< 1520.00								
06/17/22	465	159	1536.60	83	1540.69	130	1542.68	107	1533.45	68	1547.91	109	1548.55	51	1549.61	21	1550.80	6.1	< 1520.00								
06/18/22	466	159	1536.56	83	1540.73	130	1542.66	106	1533.43	68	1547.90	109	1548.54	51	1549.59	21	1550.78	6.0	< 1520.00								
06/19/22	466	159	1536.54	83	1540.79	130	1542.65	106	1533.41	68	1547.90	109	1548.52	51	1549.58	20	1550.77	6.0	< 1520.00								
06/20/22	465	159	1536.53	82	1540.83	130	1542.64	106	1533.40	68	1547.90	109	1548.51	51	1549.57	20	1550.76	6.1	< 1520.00								
06/21/22	465	159	1536.51	82	1540.87	130	1542.64	106	1533.40	68	1547.91	109	1548.51	51	1549.57	20	1550.76	6.0	< 1520.00								
06/22/22	465	159	1536.49	82	1540.91	130	1542.63	106	1533.38	68	1547.91	109	1548.50	51	1549.56	20	1550.75	6.0	< 1520.00								
06/23/22	465	159	1536.48	82	1540.93	130	1542.62	106	1533.38	68	1547.92	109	1548.50	51	1549.57	20	1550.76	5.9	< 1520.00								
06/24/22	465	159	1536.45	82	1540.95	130	1542.61	106	1533.36	68	1547.91	109	1548.49	51	1549.55	20	1550.74	6.0	< 1520.00								
06/25/22	465	159	1536.43	82	1540.99	130	1542.59	106	1533.35	68	1547.91	109	1548.47	51	1549.54	20	1550.72	5.9	< 1520.00								
06/26/22	465	159	1536.40	82	1541.03	130	1542.58	106	1533.33	68	1547.91	109	1548.46	51	1549.52	21	1550.71	5.8	< 1520.00								
06/27/22	465	159	1536.38	82	1541.07	130	1542.56	106	1533.31	68	1547.90	109	1548.44	51	1549.50	21	1550.69	5.9	< 1520.00								
06/28/22	464	159	1536.35	82	1541.11	130	1542.55	106	1533.30	68	1547.90	109	1548.43	52	1549.48	21	1550.68	5.8	< 1520.00								
06/29/22	464	159	1536.32	81	1541.13	130	1542.53	107	1533.28	67	1547.89	109	1548.42	51	1549.47	21	1550.66	5.9	< 1520.00								
06/30/22	464	159	1536.29	81	1541.16	130	1542.52	107	1533.26	67	1547.89	109	1548.40	51	1549.46	20	1550.65	5.9	< 1520.00								
Monthly Average	466	158	1536.83	83	1540.77	129	1542.79	106	1533.66	69	1547.94	109	1548.60	54	1549.56	21	1550.82	6.3	< 1520.00								
Analytical <sup>1</sup>	Conc (mg/L)		Date	Conc (mg/L)		Date	Conc (mg/L)		Date	Conc (mg/L)		Date	Conc (mg/L)		Date	Conc (mg/L)		Date	Conc (mg/L)		Date						
Perchlorate	6.7		6/9/2022	5.3		6/9/2022	4.8		6/9/2022	2.9		6/9/2022	3.3		6/9/2022	2.1		6/9/2022	0.83		6/9/2022	1.1		6/9/2022	4.0		6/9/2022
Hexavalent Chromium	0.0035		6/9/2022	0.00078		6/9/2022	ND		6/9/2022	0.0024		6/9/2022	ND		6/9/2022	ND		6/9/2022	ND		6/9/2022	ND		6/9/2022	ND		6/9/2022
Total Chromium	0.0016		6/9/2022	ND		6/9/2022	ND		6/9/2022	ND		6/9/2022	ND		6/9/2022	ND		6/9/2022	ND		6/9/2022	ND		6/9/2022	ND		6/9/2022

**Notes:**  
 Flow reported as gpm is a daily average calculated from the totalizer reading.  
 ND = Not detected above laboratory method detection limit (Cr(TR)=2.5 ug/L, Cr(VI) =0.20 ug/L).  
 J = Result is less than the reporting limit but greater than or equal to the method detection limit and the concentration is an approximate value.  
 1: Analytical results are reported from Eurofins TestAmerica.  
 2: On 06/02, PC-116R, PC-115R, and PC-117 flows increased  
 3: Duplicates taken on 06/09 for well PC-99R2/R3; average of both values is presented and used for calculations.  
 4: On 06/02, PC-118 flow switched from LS-1 to IX.  
 5: On 06/02, PC-120 and PC-121 flows decreased.  
 6: On 06/23, PC120 and PC-121 offline briefly for maintenance.  
 7: A "<" preceding the water elevation indicates the reported water level is below the transducer. Average monthly water elevation calculations include the transducer elevation in instances where the water level is below the transducer.

Nevada Environmental Response Trust   Groundwater Extraction and Treatment System   Enhanced Operational Metrics																	
Date	LS #3 Flow (gpm)	ART-1/1A		ART-2/2A		ART-3/3A		ART-4/4A		ART-9		ART-7A/7B		ART-8/8A		PC-150	
		Flow (gpm)	Water Elevation (ft amsl)	Flow (gpm)	Water Elevation (ft amsl)	Flow (gpm)	Water Elevation (ft amsl)	Flow <sup>2</sup> (gpm)	Water Elevation (ft amsl)	Flow (gpm)	Water Elevation (ft amsl)	Flow (gpm)	Water Elevation (ft amsl)	Flow (gpm)	Water Elevation (ft amsl)	Flow <sup>4</sup> (gpm)	Water Elevation (ft amsl)
06/01/22	411	42	1584.62	142	1584.77	24	1583.51	4.3	1578.97	56	1576.42	25	1582.71	171	1582.03	1.5	1579.18
06/02/22	413	42	1584.60	142	1584.75	24	1583.49	4.0	1580.81	54	1576.55	28	1581.54	171	1582.02	1.5	1579.18
06/03/22	412	42	1584.58	142	1584.72	23	1583.47	4.2	1580.05	52	1577.48	28	1581.34	171	1581.99	1.5	1579.16
06/04/22	411	42	1584.55	142	1584.68	23	1583.44	4.2	1578.82	50	1577.66	28	1581.27	171	1581.96	1.5	1578.79
06/05/22	411	42	1584.53	142	1584.65	23	1583.42	4.2	1578.82	49	1577.27	28	1581.17	171	1581.94	1.5	1578.79
06/06/22	410	42	1584.51	141	1584.63	23	1583.40	4.1	1578.82	48	1577.17	28	1581.10	171	1581.92	1.5	1578.78
06/07/22	409	42	1584.49	141	1584.60	23	1583.38	4.1	1578.83	48	1577.05	28	1581.05	171	1581.90	1.5	1578.76
06/08/22	409	42	1584.47	141	1584.57	23	1583.36	4.1	1578.83	47	1576.97	28	1580.97	171	1581.88	1.5	1578.76
06/09/22	408	42	1584.44	141	1584.54	23	1583.34	4.1	1578.83	47	1576.91	28	1580.93	171	1581.85	1.5	1578.75
06/10/22	407	42	1584.42	141	1584.51	23	1583.32	4.1	1578.83	46	1576.88	28	1580.88	171	1581.83	1.5	1578.75
06/11/22	407	42	1584.41	141	1584.49	23	1583.30	4.0	1578.83	46	1576.85	28	1580.74	171	1581.82	1.5	1578.75
06/12/22	407	42	1584.39	141	1584.47	23	1583.28	4.0	1578.83	45	1576.82	28	1580.53	171	1581.80	1.5	1578.74
06/13/22	406	42	1584.36	142	1584.43	23	1583.26	4.0	1578.82	45	1576.77	28	1580.41	171	1581.77	1.5	1578.73
06/14/22	406	42	1584.34	142	1584.40	23	1583.24	4.0	1578.82	45	1576.72	27	1580.54	171	1581.75	1.5	1578.72
06/15/22	405	42	1584.32	141	1584.38	23	1583.22	4.0	1578.83	44	1576.66	27	1580.42	171	1581.73	1.5	1578.72
06/16/22	405	42	1584.31	141	1584.37	23	1583.21	4.0	1578.83	44	1576.62	28	1580.22	171	1581.72	1.5	1578.72
06/17/22	404	42	1584.29	141	1584.35	23	1583.19	3.9	1578.83	43	1576.61	27	1580.06	171	1581.70	1.5	1578.71
06/18/22	404	42	1584.27	142	1584.32	23	1583.17	3.9	1578.83	43	1576.57	27	1580.05	171	1581.68	1.5	1578.71
06/19/22	404	42	1584.25	142	1584.29	22	1583.15	3.9	1578.83	42	1576.53	27	1580.12	171	1581.66	1.5	1578.71
06/20/22	403	42	1584.24	142	1584.28	22	1583.14	3.9	1578.83	42	1576.53	27	1580.12	171	1581.65	1.5	1578.71
06/21/22	403	42	1584.23	141	1584.26	22	1583.13	3.9	1578.83	42	1576.58	27	1580.00	171	1581.63	1.5	1578.71
06/22/22	403	42	1584.21	141	1584.24	22	1583.11	3.9	1578.83	42	1576.58	27	1579.93	171	1581.62	1.5	1578.71
06/23/22	403	42	1584.20	141	1584.22	22	1583.10	3.9	1578.83	41	1576.57	27	1579.77	171	1581.60	1.5	1578.71
06/24/22	403	42	1584.19	141	1584.20	22	1583.08	3.8	1578.84	41	1576.53	27	1579.71	171	1581.59	1.5	1578.70
06/25/22	401	42	1584.17	141	1584.18	22	1583.07	3.8	1578.84	41	1576.52	27	1579.74	171	1581.57	1.5	1578.70
06/26/22	401	42	1584.15	141	1584.16	22	1583.05	3.8	1578.84	41	1576.55	27	1579.79	171	1581.56	1.5	1578.70
06/27/22	400	42	1584.14	141	1584.14	22	1583.04	3.8	1578.84	41	1576.60	27	1579.80	171	1581.54	1.5	1578.70
06/28/22	400	42	1584.13	141	1584.12	22	1583.02	3.8	1578.84	41	1576.60	27	1579.69	171	1581.53	1.5	1578.70
06/29/22	400	42	1584.11	141	1584.10	22	1583.01	3.8	1578.84	40	1576.60	27	1579.62	171	1581.51	1.5	1578.70
06/30/22	399	42	1584.09	141	1584.07	22	1582.99	3.8	1578.84	40	1576.59	27	1579.60	171	1581.49	1.5	1578.70
Monthly Average	405	42	1584.33	141	1584.40	23	1583.23	4.0	1578.94	45	1576.76	27	1580.46	171	1581.74	1.5	1578.77
Analytical <sup>1</sup>	Conc (mg/L)	Date	Conc (mg/L)	Date	Conc (mg/L)	Date	Conc (mg/L)	Date	Conc (mg/L)	Date	Conc (mg/L)	Date	Conc (mg/L)	Date	Conc (mg/L)	Date	
Perchlorate	23	6/9/2022	7.7	6/9/2022	190	6/9/2022	105	6/9/2022	170	6/9/2022	74	6/9/2022	53	6/9/2022	36	6/9/2022	
Hexavalent Chromium	ND	6/9/2022	0.0035	6/9/2022	0.29	6/9/2022	0.13	6/9/2022	0.60	6/9/2022	0.43	6/9/2022	0.068	6/9/2022	0.043	6/9/2022	
Total Chromium	ND	6/9/2022	ND	6/9/2022	0.26	6/9/2022	0.12	6/9/2022	0.60	6/9/2022	0.44	6/9/2022	0.060	6/9/2022	0.038	6/9/2022	

Notes:  
 Flow reported as gpm is a daily average calculated from the totalizer reading.  
 ND = Not detected above laboratory method detection limit (ClO<sub>4</sub> = 0.5 ug/L; ClO<sub>3</sub> = 10 ug/L; NO<sub>3</sub>-N = 0.055 mg/L, Cr(VI) = 0.25 ug/L).  
 ART-1, 2, 3, 4, 7B, and 8 have adjacent recovery wells, both of which can be used for extraction. The pumping well can be chosen manually or automatically, based on operational considerations.  
 The wells with transducers are ART-1, -2, -3, -4, -7A, -8, -9, and PC-150  
 1: Analytical results are reported from Eurofins TestAmerica.  
 2: From 06/02 to 06/03, ART-4 switched to ART4A.  
 3: Duplicates taken on 06/09 for well ART4; average of both values is presented and used for calculations.  
 4: Conducted periodic bucket tests to confirm flow rates for PC-150. Average flow of 1.5 gpm determined from flow tests is presented for 06/01-06/30 flows and used for calculation purposes  
 Flow was steady throughout the month but the totalizer showed zero flow because totalizer units are 1,000 gallons.

Nevada Environmental Response Trust   Groundwater Extraction and Treatment System   Enhanced Operational Metrics																				
Date	I-AR		I-AA <sup>3,4,5,6,7</sup>		I-AB		I-AC		I-AD <sup>8,9,10,11</sup>		I-B		I-C		I-D		I-E		I-F	
	Flow (gpm)	Water Elevation (ft amsl)	Flow (gpm)	Water Elevation (ft amsl)	Flow (gpm)	Water Elevation (ft amsl)	Flow (gpm)	Water Elevation (ft amsl)	Flow (gpm)	Water Elevation (ft amsl)	Flow (gpm)	Water Elevation (ft amsl)	Flow (gpm)	Water Elevation (ft amsl)	Flow (gpm)	Water Elevation (ft amsl)	Flow (gpm)	Water Elevation (ft amsl)	Flow (gpm)	Water Elevation (ft amsl)
06/01/22	0.10	1719.93	0.83	1709.53	0.0	1718.93	0.0	1723.80	0.76	1720.11	0.32	1709.72	2.8	1708.79	1.1	1706.48	1.1	1712.70	3.3	1709.24
06/02/22	0.10	1719.95	0.91	1707.60	0.0	1718.88	0.0	1723.82	0.75	1720.23	0.31	1709.71	2.7	1708.79	1.1	1707.02	1.1	1712.54	3.0	1709.31
06/03/22	0.10	1719.99	0.90	1707.60	0.0	1718.88	0.0	1723.80	0.75	1720.17	0.33	1709.72	2.7	1708.79	1.1	1707.19	1.1	1712.56	3.0	1709.35
06/04/22	0.10	1719.94	0.90	1707.60	0.0	1718.88	0.0	1723.79	0.76	1720.13	0.30	1709.72	2.7	1708.79	1.1	1707.40	1.0	1712.66	2.9	1709.36
06/05/22	0.10	1720.02	0.90	1707.66	0.0	1718.91	0.0	1723.79	0.76	1720.07	0.30	1709.68	2.7	1708.79	1.1	1708.14	1.0	1712.78	2.8	1709.37
06/06/22	0.10	1720.00	0.89	1707.91	0.0	1718.90	0.0	1723.77	0.77	1720.00	0.34	1709.61	2.7	1708.79	1.0	1709.27	1.0	1712.85	2.8	1709.36
06/07/22	0.10	1719.97	0.88	1708.22	0.014	1718.56	0.0	1723.76	0.56	1721.19	0.38	1709.58	2.7	1708.79	1.0	1709.85	1.0	1712.93	2.9	1709.36
06/08/22	0.10	1719.90	0.86	1708.49	0.0	1718.84	0.0	1723.76	0.82	1715.96	0.39	1709.60	2.7	1708.79	1.0	1710.57	1.0	1713.03	2.9	1709.36
06/09/22	0.10	1719.95	0.83	1709.12	0.0	1718.85	0.0	1723.72	0.63	1721.06	0.39	1709.61	2.6	1708.79	0.99	1711.05	1.0	1713.14	2.9	1709.32
06/10/22	0.10	1719.94	0.83	1709.18	0.0	1718.86	0.0	1723.72	0.58	1721.39	0.39	1709.63	2.6	1708.79	0.98	1711.44	1.0	1713.22	3.0	1709.32
06/11/22	0.10	1719.97	0.83	1709.28	0.0	1718.86	0.0	1723.70	0.56	1721.55	0.38	1709.64	2.6	1708.79	0.97	1711.51	1.0	1713.24	3.0	1709.33
06/12/22	0.10	1720.03	0.83	1709.23	0.0	1718.86	0.0	1723.72	0.55	1721.62	0.38	1709.63	2.6	1708.79	0.98	1711.50	1.0	1713.25	3.0	1709.34
06/13/22	0.10	1720.03	0.70	1711.69	0.0	1718.88	0.0	1723.74	0.53	1721.68	0.37	1709.62	2.7	1708.79	0.97	1711.50	1.0	1713.24	3.1	1709.34
06/14/22	0.10	1720.00	0.65	1712.66	0.0	1718.91	0.018	1723.72	0.89	1716.22	0.35	1709.62	2.7	1708.79	0.97	1711.72	1.0	1713.40	3.2	1709.29
06/15/22	0.10	1719.99	0.48	1714.65	0.0	1718.95	0.0	1723.81	1.1	1711.65	0.34	1709.62	2.7	1708.79	0.97	1711.64	1.0	1713.47	3.2	1709.27
06/16/22	0.10	1719.99	0.72	1710.94	0.0	1718.97	0.0	1723.75	0.50	1721.01	0.33	1709.66	2.5	1711.19	1.0	1710.22	0.91	1714.31	3.4	1709.31
06/17/22	0.10	1719.98	0.90	1707.72	0.0	1718.87	0.0	1723.69	0.36	1722.82	0.33	1709.63	2.4	1712.10	1.0	1710.45	0.91	1714.47	3.5	1709.09
06/18/22	0.10	1720.00	0.84	1708.91	0.0	1718.88	0.0	1723.69	0.27	1723.29	0.38	1709.60	2.1	1714.36	0.87	1714.17	0.90	1714.60	3.7	1708.81
06/19/22	0.10	1720.17	0.81	1709.59	0.0	1718.89	0.0	1723.67	0.25	1723.42	0.37	1709.58	2.4	1712.55	1.0	1711.61	1.1	1712.36	3.8	1708.71
06/20/22	0.10	1720.20	0.76	1710.59	0.0	1718.86	0.0	1723.66	0.28	1723.28	0.35	1709.61	2.6	1711.15	1.0	1710.39	1.1	1712.73	3.9	1708.71
06/21/22	0.10	1719.98	0.73	1711.21	0.0	1718.86	0.0	1723.66	0.29	1723.19	0.33	1709.60	2.5	1711.72	1.0	1711.45	1.1	1713.23	3.9	1708.71
06/22/22	0.10	1719.99	0.72	1711.43	0.0	1718.86	0.0	1723.64	0.30	1723.16	0.32	1709.59	2.5	1712.05	0.97	1712.79	1.1	1713.42	4.0	1709.24
6/23/22 <sup>2</sup>	0.09	1720.04	0.75	1710.98	0.0	1718.89	0.0	1723.66	0.43	1722.33	0.31	1709.66	2.3	1713.57	0.82	1715.41	0.98	1714.24	4.1	1713.15
06/24/22	0.09	1720.08	0.89	1707.64	0.0	1718.85	0.0	1723.64	0.69	1720.69	0.32	1709.64	2.3	1713.51	0.88	1714.41	0.96	1714.50	4.1	1715.31
06/25/22	0.10	1720.01	0.89	1707.68	0.0	1718.82	0.0	1723.63	0.69	1720.69	0.31	1709.64	2.5	1711.95	1.2	1705.99	0.95	1714.50	4.1	1714.68
06/26/22	0.09	1720.00	0.89	1707.67	0.0	1718.81	0.0	1723.60	0.69	1720.68	0.33	1709.63	2.4	1712.01	1.1	1707.34	1.0	1713.75	4.1	1713.03
06/27/22	0.09	1720.04	0.89	1707.68	0.0	1718.81	0.0	1723.59	0.81	1719.61	0.36	1709.62	2.5	1709.96	1.1	1707.12	1.1	1712.81	3.9	1709.14
06/28/22	0.09	1720.10	0.89	1707.67	0.0	1718.78	0.0	1723.59	0.80	1719.76	0.38	1709.66	2.6	1708.81	1.1	1707.04	1.1	1712.83	3.6	1708.78
06/29/22	0.09	1720.16	0.89	1707.67	0.0	1718.77	0.0	1723.58	0.89	1718.60	0.38	1709.64	2.6	1708.81	1.1	1706.62	1.1	1712.54	3.4	1709.20
06/30/22	0.09	1720.24	0.89	1707.66	0.0	1718.76	0.0	1723.57	0.93	1718.02	0.38	1709.65	2.6	1708.81	1.1	1706.58	1.1	1712.51	3.3	1709.33
Monthly Average	0.10	1720.02	0.82	1709.18	0.0	1718.85	0.0026	1723.66	0.63	1720.45	0.35	1709.64	2.6	1710.15	1.0	1709.93	1.0	1713.26	3.4	1709.84
Analytical <sup>1</sup>	Conc (mg/L)	Date	Conc (mg/L)	Date	Conc (mg/L)	Date	Conc (mg/L)	Date	Conc (mg/L)	Date	Conc (mg/L)	Date	Conc (mg/L)	Date	Conc (mg/L)	Date	Conc (mg/L)	Date	Conc (mg/L)	Date
Perchlorate	360	6/7/2022	24	6/7/2022	64	6/7/2022	200	6/14/2022	200	6/14/2022	250	6/7/2022	440	6/7/2022	440	6/7/2022	330	6/7/2022	490	6/7/2022
Hexavalent Chromium	0.58	6/7/2022	0.054	6/7/2022	ND	6/7/2022	1.8	6/14/2022	1.8	6/14/2022	0.14	6/7/2022	2.7	6/7/2022	4.5	6/7/2022	5.7	6/7/2022	12	6/7/2022
Total Chromium	1.4	6/7/2022	0.053	6/7/2022	0.017	6/7/2022	1.7	6/14/2022	1.8	6/14/2022	0.14	6/7/2022	2.7	6/7/2022	4.4	6/7/2022	5.9	6/7/2022	11	6/7/2022

Notes:  
 Flow reported as gpm is a daily average calculated from the totalizer reading.  
 ND = Not detected above laboratory method detection limit (ClO<sub>4</sub> = 0.5 ug/L; ClO<sub>3</sub> = 10 ug/L; NO<sub>3</sub>-N = 0.055 mg/L, Cr(VI) = 0.25 ug/L).  
 1: Analytical results are reported from Eurofins TestAmerica.  
 2: On 06/23, IWF offline briefly due to maintenance.  
 3: On 06/13, I-AA adjusted to meet flow targets as directed by the Trust.  
 4: On 06/15, I-AA offline due to maintenance.  
 5: On 06/01, I-AA and I-N adjusted to meet flow targets as directed by the Trust.  
 6: On 06/23, I-AA, I-H, and I-W adjusted to meet flow targets as directed by the Trust.  
 7: On 06/16, I-AA and I-R adjusted to meet flow targets as directed by the Trust.  
 8: On 06/07, I-AD offline due to maintenance.  
 9: On 06/14, I-AD adjusted to meet flow targets as directed by the Trust.  
 10: On 06/27, I-AD, I-C, and I-K adjusted to meet flow targets as directed by the Trust.  
 11: On 06/29, I-AD and I-N adjusted to meet flow targets as directed by the Trust.  
 12: On 06/18, I-C, I-L, and I-S adjusted to meet flow targets as directed by the Trust.  
 13: On 06/19, I-C, I-D, I-E, I-L, I-N, and I-R adjusted to meet flow targets as directed by the Trust.  
 14: On 06/26, I-E, I-N, and I-X adjusted to meet flow targets as directed by the Trust.  
 15: On 06/02, I-F, I-L, I-U, I-W, and I-X adjusted to meet flow targets as directed by the Trust.

Nevada Environmental Response Trust   Groundwater Extraction and Treatment System   Enhanced Operational Metrics																				
Date	I-G		I-H		I-I		I-J		I-K		I-L		I-M		I-N		I-O		I-P	
	Flow (gpm)	Water Elevation (ft amsl)	Flow <sup>5</sup> (gpm)	Water Elevation (ft amsl)	Flow (gpm)	Water Elevation (ft amsl)	Flow (gpm)	Water Elevation (ft amsl)	Flow <sup>10</sup> (gpm)	Water Elevation (ft amsl)	Flow <sup>12,13,15,16,17</sup> (gpm)	Water Elevation (ft amsl)	Flow (gpm)	Water Elevation (ft amsl)	Flow <sup>5,11,13,14,18</sup> (gpm)	Water Elevation (ft amsl)	Flow <sup>19</sup> (gpm)	Water Elevation (ft amsl)	Flow (gpm)	Water Elevation (ft amsl)
06/01/22	0.20	1714.86	0.90	1709.74	3.8	1721.60	6.0	1712.10	3.0	1711.89	0.85	1715.26	2.0	1716.40	2.0	1714.97	0.59	1721.10	1.8	1720.63
06/02/22	0.20	1714.87	0.85	1709.63	3.7	1721.60	6.0	1712.10	3.0	1711.96	1.0	< 1714.01	2.0	1716.41	2.1	1713.82	0.56	1721.09	1.8	1720.59
06/03/22	0.20	1714.87	0.85	1709.57	3.5	1721.59	6.0	1712.10	3.0	1711.99	1.0	< 1714.01	2.0	1716.42	2.1	1713.49	0.53	1721.09	1.8	1720.58
06/04/22	0.20	1714.85	0.83	1709.56	3.5	1721.58	6.0	1712.10	3.0	1712.08	0.85	1715.24	2.0	1716.42	2.2	1712.42	0.49	1721.09	1.8	1720.56
06/05/22	0.20	1714.83	0.83	1709.56	3.5	1721.58	5.9	1712.10	3.0	1712.07	0.55	1717.67	2.0	1716.41	2.1	1712.67	0.46	1721.08	1.8	1720.55
06/06/22	0.20	1714.80	0.84	1709.58	3.4	1721.57	5.9	1712.10	2.9	1712.27	0.80	1715.72	2.0	1716.41	1.9	1713.74	0.44	1721.08	1.8	1720.53
06/07/22	0.20	1714.76	0.85	1709.52	3.3	1721.56	5.9	1712.10	2.9	1712.57	0.95	1714.28	2.0	1716.42	1.8	1714.62	0.44	1721.08	1.8	1720.51
06/08/22	0.20	1714.73	0.84	1709.51	3.3	1721.56	5.9	1712.10	2.9	1712.59	0.96	1714.16	2.0	1716.44	1.8	1715.01	0.45	1721.08	1.8	1720.50
06/09/22	0.20	1714.71	0.84	1709.50	3.2	1721.55	5.9	1712.10	2.9	1712.61	0.88	1714.81	2.0	1716.40	1.7	1715.33	0.66	1720.99	1.8	1720.47
06/10/22	0.20	1714.68	0.82	1709.46	3.2	1721.54	5.9	1712.10	2.9	1712.67	0.82	1715.45	2.0	1716.38	1.7	1715.53	0.68	1720.95	1.9	1720.32
06/11/22	0.20	1714.68	0.74	1709.42	3.1	1721.53	5.9	1712.10	2.9	1712.69	0.80	1715.63	2.0	1716.39	1.7	1715.64	0.63	1720.93	2.0	1720.17
06/12/22	0.20	1714.71	0.77	1709.41	3.2	1721.52	5.9	1712.10	2.9	1712.74	0.95	1714.79	2.0	1716.41	1.7	1716.00	0.61	1720.91	2.0	1720.12
06/13/22	0.20	1714.64	0.83	1709.40	3.3	1721.51	5.9	1712.10	2.9	1712.73	0.99	< 1714.01	2.0	1716.43	1.6	1716.29	0.66	1720.90	2.0	1720.08
06/14/22	0.20	1714.58	0.83	1709.37	3.6	1721.49	5.9	1712.09	2.9	1712.72	0.94	1714.19	2.0	1716.44	1.6	1716.50	0.70	1720.88	2.0	1719.96
06/15/22	0.20	1714.56	0.82	1709.34	3.6	1721.48	5.9	1712.10	2.9	1712.73	0.87	1714.92	2.0	1716.45	1.6	1716.67	0.67	1720.86	2.0	1719.88
06/16/22	0.19	1714.80	0.80	1710.54	3.5	1721.50	5.9	1712.22	2.9	1712.86	0.76	1715.96	2.0	1716.57	1.3	1717.29	0.47	1720.95	1.9	1720.04
06/17/22	0.19	1714.80	0.81	1709.79	3.3	1721.48	5.9	1712.09	2.9	1712.81	0.78	1715.89	2.0	1716.60	1.1	1717.66	0.84	1720.82	1.9	1720.01
06/18/22	0.19	1714.87	0.86	1710.08	3.6	1721.46	5.9	1712.15	2.9	1712.64	0.84	1715.51	2.0	1716.73	0.95	1717.92	0.83	1720.81	1.9	1719.98
06/19/22	0.19	1714.93	0.87	1709.74	3.9	1721.44	5.9	1712.09	2.9	1712.62	1.0	1714.59	2.0	1716.82	1.1	1717.93	0.75	1720.82	1.9	1719.95
06/20/22	0.19	1714.95	0.81	1710.00	3.8	1721.44	5.9	1712.09	2.9	1712.80	1.1	< 1714.01	2.0	1716.81	1.1	1717.98	0.75	1720.81	1.9	1719.90
06/21/22	0.19	1714.97	0.78	1709.90	3.7	1721.43	5.8	1712.09	2.9	1712.81	1.1	< 1714.01	2.0	1716.82	0.80	1718.15	0.74	1720.81	1.9	1719.89
06/22/22	0.19	1714.95	0.82	1709.98	3.6	1721.42	5.8	1712.09	2.9	1712.84	1.0	< 1714.01	2.0	1716.84	0.57	1718.31	0.73	1720.80	1.9	1719.87
6/23/22 <sup>2</sup>	0.23	1713.14	0.81	1710.71	3.7	1721.44	5.8	1712.21	2.8	1713.08	0.90	1714.74	2.0	1716.98	0.32	1718.50	0.64	1720.83	1.9	1719.91
06/24/22	0.25	1711.94	0.78	1709.41	3.5	1721.42	5.8	1712.09	2.8	1713.06	0.92	1714.83	2.0	1717.05	0.44	1718.58	0.58	1720.81	1.9	1719.82
06/25/22	0.24	1711.98	0.78	1709.40	3.4	1721.41	5.8	1712.09	2.8	1712.99	1.1	< 1714.01	2.0	1717.07	0.81	1718.35	0.59	1720.80	1.9	1719.78
06/26/22	0.24	1712.01	0.73	1709.39	3.3	1721.40	5.8	1712.09	2.8	1713.02	0.96	1714.35	2.0	1717.05	0.88	1718.26	0.63	1720.79	1.9	1719.75
06/27/22	0.24	1712.00	0.76	1709.32	3.3	1721.39	5.8	1712.09	3.0	1711.02	0.89	1714.74	2.0	1716.97	1.2	1717.94	0.66	1720.77	1.9	1719.71
06/28/22	0.24	1711.99	0.77	1709.32	3.2	1721.39	5.8	1712.09	3.1	1709.74	0.84	1715.12	2.0	1716.90	1.4	1717.57	0.64	1720.76	1.9	1719.70
06/29/22	0.24	1711.95	0.74	1709.34	3.2	1721.38	5.8	1712.09	3.1	1709.68	0.82	1715.31	2.0	1716.81	1.8	1716.72	0.62	1720.75	1.9	1719.68
06/30/22	0.24	1711.89	0.73	1709.45	3.2	1721.38	5.8	1712.09	3.1	1709.55	0.94	1714.61	2.0	1716.76	1.7	1716.60	0.62	1720.74	1.9	1719.65
Monthly Average	0.21	1714.08	0.81	1709.63	3.5	1721.49	5.9	1712.10	2.9	1712.26	0.91	1714.86	2.0	1716.64	1.4	1716.35	0.62	1720.91	1.9	1720.10
Analytical <sup>1</sup>	Conc (mg/L)	Date	Conc (mg/L)	Date	Conc (mg/L)	Date	Conc (mg/L)	Date	Conc (mg/L)	Date	Conc (mg/L)	Date	Conc (mg/L)	Date	Conc (mg/L)	Date	Conc (mg/L)	Date	Conc <sup>20</sup> (mg/L)	Date
Perchlorate	850	6/14/2022	620	6/14/2022	390	6/14/2022	160	6/14/2022	210	6/14/2022	220	6/7/2022	560	6/7/2022	430	6/7/2022	520	6/14/2022	545	6/14/2022
Hexavalent Chromium	16	6/14/2022	12	6/14/2022	6.3	6/14/2022	3.5	6/14/2022	2.5	6/14/2022	1.3	6/7/2022	5.2	6/7/2022	7.1	6/7/2022	8.7	6/14/2022	11	6/14/2022
Total Chromium	16	6/14/2022	12	6/14/2022	6.4	6/14/2022	3.4	6/14/2022	2.3	6/14/2022	1.4	6/7/2022	5.4	6/7/2022	6.9	6/7/2022	8.9	6/14/2022	10	6/14/2022

Notes:  
 Flow reported as gpm is a daily average calculated from the totalizer reading.  
 1: Analytical results are reported from Eurofins TestAmerica.  
 2: On 06/23, IWF offline briefly due to maintenance.  
 5: On 06/01, I-AA and I-N adjusted to meet flow targets as directed by the Trust.  
 6: On 06/23, I-AA, I-H, and I-W adjusted to meet flow targets as directed by the Trust.  
 10: On 06/27, I-AD, I-C, and I-K adjusted to meet flow targets as directed by the Trust.  
 11: On 06/29, I-AD and I-N adjusted to meet flow targets as directed by the Trust.  
 12: On 06/18, I-C, I-L, and I-S adjusted to meet flow targets as directed by the Trust.  
 13: On 06/19, I-C, I-D, I-E, I-L, I-N, and I-R adjusted to meet flow targets as directed by the Trust.  
 14: On 06/26, I-E, I-N, and I-X adjusted to meet flow targets as directed by the Trust.  
 15: On 06/02, I-F, I-L, I-U, I-W, and I-X adjusted to meet flow targets as directed by the Trust.  
 16: On 06/06, I-L and I-R adjusted to meet flow targets as directed by the Trust.  
 17: On 06/09, 06/16, and 06/23, I-L, I-Y, and I-Z water level taken manually due to water level dropping below transducer level.  
 18: On 06/04, I-N adjusted to meet flow targets as directed by the Trust.  
 19: On 06/17, I-O adjusted to meet flow targets as directed by the Trust.  
 20: Duplicates taken on 06/14 for well I-P; average of both values is presented and used for calculations.

Nevada Environmental Response Trust   Groundwater Extraction and Treatment System   Enhanced Operational Metrics																				
Date	I-Q		I-R		I-S		I-T		I-U		I-V		I-W		I-X		I-Y		I-Z	
	Flow (gpm)	Water Elevation (ft amsl)	Flow <sup>7,13,16</sup> (gpm)	Water Elevation (ft amsl)	Flow <sup>12</sup> (gpm)	Water Elevation (ft amsl)	Flow (gpm)	Water Elevation (ft amsl)	Flow <sup>15</sup> (gpm)	Water Elevation (ft amsl)	Flow (gpm)	Water Elevation (ft amsl)	Flow <sup>6,15</sup> (gpm)	Water Elevation (ft amsl)	Flow <sup>14,15</sup> (gpm)	Water Elevation (ft amsl)	Flow <sup>17</sup> (gpm)	Water Elevation (ft amsl)	Flow <sup>17</sup> (gpm)	Water Elevation (ft amsl)
06/01/22	0.21	1716.18	1.1	1714.75	1.7	1706.51	0.60	1709.06	0.67	1711.43	4.3	1719.41	0.59	1719.85	2.7	1712.35	1.3	1699.90	6.8	1709.86
06/02/22	0.25	1715.92	1.1	1714.35	1.7	1706.51	0.60	1708.86	0.80	1707.69	4.3	1719.40	0.72	1719.12	3.0	1703.92	1.3	1699.90	6.8	1709.86
06/03/22	0.22	1716.06	0.96	1714.64	1.7	1706.52	0.60	1708.80	0.81	1707.67	4.2	1719.40	0.65	1719.54	2.9	1705.73	1.3	1699.90	6.8	1709.86
06/04/22	0.21	1716.12	0.89	1714.84	1.7	1706.52	0.60	1708.76	0.81	1707.71	4.3	1719.38	0.66	1719.53	2.9	1705.95	1.3	1699.90	6.8	1709.86
06/05/22	0.21	1716.15	0.86	1715.11	1.7	1706.52	0.60	1708.54	0.80	1707.67	4.3	1719.37	0.63	1719.64	2.8	1706.08	1.3	1699.90	6.8	1709.86
06/06/22	0.20	1716.15	1.0	1713.37	1.7	1706.52	0.61	1707.88	0.80	1707.71	4.2	1719.36	0.63	1719.65	2.8	1706.34	1.3	1699.90	6.6	1709.86
06/07/22	0.20	1716.15	1.1	1711.99	1.7	1706.52	0.61	1707.65	0.80	1707.74	4.1	1719.34	0.62	1719.68	2.8	1707.18	1.3	1699.90	6.2	1709.86
06/08/22	0.20	1716.17	1.2	1712.38	1.7	1706.52	0.61	1707.86	0.80	1707.73	4.2	1719.34	0.61	1719.68	2.8	1708.95	1.3	1699.90	6.3	1709.86
06/09/22	0.20	1716.18	1.1	1712.87	1.7	1706.52	0.61	1707.80	0.80	1707.74	4.1	1719.31	0.68	1719.14	2.7	1710.99	1.3	1699.78	6.4	1710.02
06/10/22	0.20	1716.20	1.1	1713.20	1.7	1706.52	0.61	1707.69	0.80	1707.75	4.1	1719.28	0.70	1719.07	2.7	1711.46	1.3	1699.78	6.4	1710.02
06/11/22	0.19	1716.22	1.1	1713.43	1.7	1706.52	0.61	1707.63	0.80	1707.75	4.1	1719.26	0.70	1718.95	2.7	1711.94	1.3	1699.78	6.0	1710.02
06/12/22	0.19	1716.22	0.98	1713.34	1.7	1706.52	0.61	1707.65	0.80	1708.03	4.1	1719.23	0.71	1718.83	2.6	1712.33	1.3	1699.78	6.2	1710.02
06/13/22	0.19	1716.21	0.96	1713.24	1.6	1706.52	0.61	1707.64	0.78	1708.51	4.1	1719.20	0.70	1718.73	2.6	1712.72	1.3	1699.78	6.3	1710.02
06/14/22	0.22	1716.01	0.97	1713.27	1.6	1706.51	0.61	1707.61	0.76	1709.01	4.3	1719.15	0.74	1717.10	2.5	1713.03	1.3	1699.78	6.7	1710.02
06/15/22	0.32	1715.16	1.0	1713.58	1.6	1706.52	0.61	1707.61	0.77	1709.01	4.3	1719.12	0.76	1715.79	2.4	1713.32	1.3	1699.78	6.7	1710.02
06/16/22	0.27	1715.63	1.0	1713.40	1.7	1706.55	0.59	1708.20	0.79	1708.21	4.2	1719.19	0.70	1718.12	2.3	1713.72	1.3	1699.95	6.5	1710.04
06/17/22	0.25	1715.84	1.0	1713.08	1.7	1706.51	0.59	1708.21	0.79	1707.68	4.1	1719.14	0.70	1718.47	2.2	1714.12	1.3	1699.95	6.2	1710.04
06/18/22	0.21	1716.09	1.0	1714.02	1.7	1706.52	0.57	1709.22	0.77	1707.70	4.3	1719.11	0.67	1718.74	2.1	1714.40	1.3	1699.95	6.7	1710.04
06/19/22	0.18	1716.23	1.0	1713.14	1.7	1706.51	0.55	1709.77	0.78	1707.63	4.3	1719.06	0.67	1718.93	2.1	1714.64	1.3	1699.95	6.7	1710.04
06/20/22	0.19	1716.22	1.1	1712.66	1.7	1706.51	0.56	1709.57	0.78	1707.63	4.3	1719.04	0.67	1718.83	2.0	1714.70	1.3	1699.95	6.7	1710.04
06/21/22	0.19	1716.24	1.1	1712.59	1.7	1706.51	0.58	1708.79	0.79	1707.62	4.3	1719.02	0.65	1719.01	2.0	1714.80	1.3	1699.95	6.7	1710.04
06/22/22	0.19	1716.25	1.1	1712.90	1.7	1706.51	0.60	1707.70	0.79	1707.62	4.3	1719.01	0.63	1719.21	2.0	1714.92	1.3	1699.95	6.6	1710.04
6/23/22 <sup>2</sup>	0.23	1716.02	0.99	1713.60	1.7	1706.55	0.59	1707.89	0.79	1707.67	4.3	1719.07	0.64	1718.54	1.7	1715.64	1.3	1699.91	6.6	1710.13
06/24/22	0.25	1715.97	1.0	1713.94	1.7	1706.52	0.59	1707.66	0.79	1707.61	4.3	1719.01	0.77	1714.45	1.8	1715.60	1.3	1699.91	6.5	1710.13
06/25/22	0.26	1715.81	1.1	1713.81	1.7	1706.51	0.59	1707.67	0.78	1707.63	4.1	1718.98	0.77	1714.44	2.4	1714.27	1.3	1699.91	6.3	1710.13
06/26/22	0.28	1715.61	1.0	1713.96	1.7	1706.52	0.59	1707.65	0.77	1707.65	4.1	1718.95	0.76	1714.56	2.5	1714.01	1.3	1699.91	6.2	1710.13
06/27/22	0.28	1715.57	1.0	1712.64	1.7	1706.52	0.59	1707.64	0.78	1707.63	4.1	1718.93	0.76	1714.35	2.8	1712.75	1.3	1699.91	6.1	1710.13
06/28/22	0.28	1715.51	1.1	1711.54	1.6	1706.52	0.59	1707.64	0.79	1707.61	4.1	1718.92	0.76	1714.06	2.8	1712.66	1.3	1699.91	6.0	1710.13
06/29/22	0.27	1715.50	1.1	1711.56	1.6	1706.52	0.59	1707.64	0.79	1707.61	4.1	1718.90	0.76	1713.59	2.7	1712.60	1.3	1699.91	6.0	1710.13
06/30/22	0.27	1715.49	1.1	1711.57	1.6	1706.52	0.59	1707.66	0.78	1707.61	4.1	1718.88	0.76	1713.44	2.7	1712.45	1.2	1699.94	6.1	1710.11
Monthly Average	0.23	1715.97	1.0	1713.29	1.7	1706.52	0.60	1708.13	0.79	1707.94	4.2	1719.16	0.69	1717.77	2.5	1711.79	1.3	1699.88	6.5	1710.01
Analytical <sup>1</sup>	Conc (mg/L)	Date	Conc (mg/L)	Date	Conc (mg/L)	Date	Conc (mg/L)	Date	Conc (mg/L)	Date	Conc (mg/L)	Date	Conc (mg/L)	Date	Conc (mg/L)	Date	Conc (mg/L)	Date	Conc (mg/L)	Date
Perchlorate	570	6/14/2022	570	6/7/2022	320	6/7/2022	710	6/14/2022	750	6/14/2022	530	6/14/2022	570	6/14/2022	540	6/7/2022	330	6/7/2022	170	6/14/2022
Hexavalent Chromium	14	6/14/2022	0.83	6/7/2022	1.6	6/7/2022	16	6/14/2022	14	6/14/2022	9.5	6/14/2022	6.6	6/14/2022	9.2	6/7/2022	1.2	6/7/2022	4.9	6/14/2022
Total Chromium	13	6/14/2022	0.83	6/7/2022	1.5	6/7/2022	11	6/14/2022	14	6/14/2022	6.5	6/14/2022	9.1	6/14/2022	9.0	6/7/2022	1.2	6/7/2022	4.8	6/14/2022

Notes:  
 Flow reported as gpm is a daily average calculated from the totalizer reading.  
 1: Analytical results are reported from Eurofins TestAmerica.  
 2: On 06/23, IWF offline briefly due to maintenance.  
 6: On 06/23, I-AA, I-H, and I-W adjusted to meet flow targets as directed by the Trust.  
 7: On 06/16, I-AA and I-R adjusted to meet flow targets as directed by the Trust.  
 12: On 06/18, I-C, I-L, and I-S adjusted to meet flow targets as directed by the Trust.  
 13: On 06/19, I-C, I-D, I-E, I-L, I-N, and I-R adjusted to meet flow targets as directed by the Trust.  
 14: On 06/26, I-E, I-N, and I-X adjusted to meet flow targets as directed by the Trust.  
 15: On 06/02, I-F, I-L, I-U, I-W, and I-X adjusted to meet flow targets as directed by the Trust.  
 16: On 06/06, I-L and I-R adjusted to meet flow targets as directed by the Trust.  
 17: On 06/09, 06/16, and 06/23, I-L, I-Y, and I-Z water level taken manually due to water level dropping below transducer level

Nevada Environmental Response Trust   Groundwater Extraction and Treatment System   Enhanced Operational Metrics																
Date	LS #2	GWTP Effluent <sup>1</sup>				GW-11 Influent <sup>1</sup>				FBR Plant Influent <sup>1</sup>						
	Flow (gpm)	Flow (gpm)	TA - Cr (TR) (mg/L)	TA - Cr (VI) (mg/L)	TA - ClO <sub>2</sub> (mg/L)	Flow <sup>3</sup> (gpm)	TA - Cr (TR) (mg/L)	TA - Cr (VI) (mg/L)	TA - ClO <sub>2</sub> (mg/L)	Flow (gpm)	TA - ClO <sub>2</sub> (mg/L)	ETI - ClO <sub>2</sub> (mg/L)	TA - ClO <sub>2</sub> (mg/L)	TA - NO <sub>2</sub> - N (mg/L)	TA - Cr (TR) (mg/L)	TA - Cr (VI) (mg/L)
06/01/22	411	56	1.0	0.00055 J	410	0.0				939		41				
06/02/22	413	59				0.0				938		46				
06/03/22	412	56				0.0				927		47				
06/04/22	411	58				0.0				927	50	47				
06/05/22	411	63				0.0				930		45				
06/06/22	410	56				0.0				925		49	110	12	0.077	0.023
06/07/22	409	55				0.0				923		44				
06/08/22	409	56				0.90	0.14	0.062	40	921		46				
06/09/22	408	55	3.2	0.00098 J	440	0.0				920		49				
06/10/22	407	55				0.0				920		47				
06/11/22	407	54				0.0				918	51	47				
06/12/22	407	61				0.0				924		47				
06/13/22	406	62				0.0				925		41		12	0.28	0.039
06/14/22	406	58				0.0				920		43				
06/15/22	405	55	0.25	ND	610	0.0				916		43				
06/16/22	405	60				0.0				921		41				
06/17/22	404	63				0.0				923		51				
06/18/22	404	61				0.0				922	44	53				
06/19/22	404	59				0.0				919		51				
06/20/22	403	59				0.0				918		55		12	0.11	0.047
06/21/22	403	58				0.0				916		51				
06/22/22	403	58	0.17	0.00061 J	410	0.0				916		55				
06/23/22	403	60				0.0				918		53				
06/24/22	403	60				0.0				918		52				
06/25/22	401	61				0.0				918	120	52				
06/26/22	401	62				0.0				918		51				
06/27/22	400	60				0.0				915		52		12	0.082	0.0051
06/28/22	400	59				0.0				913		54				
06/29/22	400	60	0.5	ND	400	0.0				915		56				
06/30/22	399	61				0.0				914		57				
Monthly Average <sup>2</sup>	405	59	1.06	0.00045	456	0.03	0.14	0.062	40	921	70	49	110	12	0.13	0.028

Notes:  
 Flow reported as gpm is a daily average calculated from the totalizer reading. The only exceptions are the instantaneous flow readings recorded for the 1st and 2nd Stage FBR flows.  
 J = Result is less than the reporting limit but greater than or equal to the method detection limit and the concentration is an approximate value.  
 ND = Not detected above laboratory method detection limit (ClO<sub>2</sub> = 0.5 ug/L; ClO<sub>3</sub> = 10 ug/L; NO<sub>3</sub>-N = 0.055 mg/L, Cr(VI) = 0.25 ug/L).  
 1: ETI = Envirogen internal process control data, TA = Eurofins TestAmerica data.  
 2: All average concentrations reported are monthly flow weighted averages.  
 3: Flows bypassed GW-11 Influent and FBR Plant Influent totalizers from 06/01 to 06/30 due to FBR plant influent strainers clogging, except for monthly sampling and maintenance.

Nevada Environmental Response Trust   Groundwater Extraction and Treatment System   Enhanced Operational Metrics														
Date	1st Stage FBR <sup>4</sup>			2nd Stage FBR <sup>4</sup>			FBR Plant Effluent <sup>1</sup>							
	Flow (gpm)	pH (s.u.)	ORP (mV)	Flow (gpm)	pH (s.u.)	ORP (mV)	Flow <sup>5</sup> (gpm)	TA - ClO <sub>2</sub> (mg/L)	ETI - ClO <sub>4</sub> (mg/L)	TA - ClO <sub>3</sub> (mg/L)	TA - Cr (TR) (mg/L)	TA - Cr (VI) (mg/L)	TA - NO <sub>2</sub> - N (mg/L)	ETI - Turbidity (NTU)
06/01/22	989	6.7	-296	892	6.5	-400	948		0.0					10
06/02/22	991	6.7	-247	845	6.5	-337	943		47					14
06/03/22	979	6.8	-263	844	6.5	-340	947		0.0					20
06/04/22	983	6.8	-304	805	6.5	-348	948	ND	0.0					17
06/05/22	981	6.8	-356	725	6.5	-379	942		0.0					20
06/06/22	999	6.8	-339	796	6.5	-397	950		0.0	0.018	0.007 J	ND	0.096	20
06/07/22	995	6.8	-351	695	6.5	-400	937		0.0					19
06/08/22	977	6.8	-298	884	6.5	-402	948		0.0					15
06/09/22	987	6.8	-320	773	6.5	-395	940		0.0					14
06/10/22	976	6.8	-316	678	6.5	-399	946		0.0					20
06/11/22	972	6.8	-353	833	6.5	-401	945	ND	0.0					18
06/12/22	974	6.9	-385	745	6.5	-409	937		0.0					18
06/13/22	975	6.9	-334	890	6.5	-401	939		0.0		0.016	ND	0.14	19
06/14/22	986	6.8	-328	879	6.4	-408	948		0.0					15
06/15/22	989	6.8	-342	796	6.4	-415	946		0.0					15
06/16/22	970	6.9	-381	673	6.5	-406	943		0.0					44
06/17/22	981	6.8	-331	657	6.4	-404	941		0.0					18
06/18/22	962	6.8	377	912	6.4	416	933	ND	0.0					13
06/19/22	978	6.8	-387	807	6.4	-419	936		0.0					8.5
06/20/22	980	6.8	-321	798	6.5	-389	941		0.0		0.0077 J	ND	0.22	11
06/21/22	981	6.8	-339	836	6.5	-411	939		0.0					18
06/22/22	989	6.8	-364	869	6.5	-412	940		0.0					20
06/23/22	977	7.8	-349	711	6.5	-409	947		0.0					18
06/24/22	995	6.8	-270	809	6.5	-406	948		0.0					15
06/25/22	999	6.9	-370	885	6.5	-411	863	ND	0.0					12
06/26/22	1284	6.9	-371	889	6.4	-412	952		0.0		0.0060 J	ND	0.17	19
06/27/22	1002	6.9	-372	744	6.4	-414	945		0.0					17
06/28/22	989	6.9	-355	899	6.4	-659	943		0.0					19
06/29/22	987	7.0	-400	816	6.5	-419	947		0.0					21
06/30/22	998	7.1	-365	879	6.7	-375	956		0.0					62
Monthly Average <sup>2</sup>	994	6.9	-315	809	6.5	-376	941	ND	1.6	0.018	0.0090	ND	0.15	19

Notes:

Flow reported as gpm is a daily average calculated from the totalizer reading. The only exceptions are the instantaneous flow readings recorded for the 1st and 2nd Stage FBR flows.

ND = Not detected above laboratory method detection limit (ClO<sub>2</sub> = 0.5 ug/L; ClO<sub>3</sub> = 10 ug/L; NO<sub>2</sub>-N = 0.055 mg/L, Cr(VI) = 0.25 ug/L).

H = Sample was prepped or analyzed beyond the specified holding time.

J = Result is less than the reporting limit but greater than or equal to the method detection limit and the concentration is an approximate value.

1: ETI = Envirogen internal process control data, TA = Eurofins TestAmerica data.

2: All average concentrations reported are monthly flow weighted averages.

4: For 1st and 2nd stage FBRs, flow measurements are collected from the influent lines and pH and ORP samples are collected from the recycle lines.

5: FBR Plant Effluent represents effluent discharged to Las Vegas Wash. While this may represent the entirety of the FBR Plant effluent, any diversions to GW-11 are subtracted from the original effluent flow.

GW-11 Level Monitoring <sup>1</sup>		
Date	Field Measurement (ft)	Volume (MG)
06/15/22	28.3	38.9
06/30/22	29.2	37.7

GW-11 Leak Detection Monitoring				
Date	Amount Pumped <sup>2</sup> (gallons)			
	NW Corner	NE Corner	SW Corner	SE Corner
6/14/2022	0	0	1,168	0
6/28/2022	0	0	574	0

GW-11 Composite Sample <sup>3</sup>		
Analytes	Concentration	Units
Perchlorate	16	mg/L
Chlorate	13	mg/L
Ammonia as N	0.43	mg/L
Total Phosphorus	0.31	mg/L
Total Dissolved Solids (TDS)	11,000 D	mg/L
Total Suspended Solids (TSS)	54 D	mg/L
pH	8.5 HF	s.u.
Calcium	570	mg/L
Iron	0.6	mg/L
Chromium (total)	0.032	mg/L
Chromium VI	0.0046	mg/L
Chloride	4,600	mg/L
Nitrate as N	2.9	mg/L
Sulfate	3,800	mg/L

Notes:

D = Result was obtained from the analysis of a dilution.

HF = Field parameter with a holding time of 15 minutes. Test performed by laboratory at client's request.

1: A transducer installed along the eastern berm provides water pressure measurements that are correlated to elevations for calculation of water depths.

2: Pumping occurs over three consecutive days. The total amount pumped over the three day period is listed with the last day pumping occurred.

3: GW-11 Corner Composite Sample is collected quarterly, most recent sampling results are presented. Sampled on: May 11, 2022



Nevada Environmental Response Trust   Groundwater Extraction and Treatment System   Enhanced Operational Metrics						
Date	Flow <sup>1</sup> (gpm)	FBR Influent Concentration			Influent Function Load <sup>2</sup> (lbs/day)	6 Month Rolling Average (lbs/day)
		ClO <sub>4</sub> (mg/L)	NO <sub>3</sub> as N (mg/L)	ClO <sub>3</sub> (mg/L)		
July 2021	1,043	62	8.1	120	487	454
Aug 2021	1,063	62	8.6	120	502	460
Sep 2021	954	62	10.7	130	492	467
Oct 2021	924	66	11	120	464	475
Nov 2021	879	49	10.2	120	406	473
Dec 2021	934	42	9.6	110	391	471
Jan 2022	992	58	11	120	481	457
Feb 2022	1,050	56	18	110	563	466
Mar 2022	1,022	50	20	110	556	477
Apr 2022	957	59	17	110	509	485
May 2022	944	56	14	110	471	495
June 2022	921	70	12	110	465	508

Notes:

Concentrations and flow are presented as monthly average.

1: Flow used in loading calculation is average monthly FBR influent flow.

2: FBR loading calculated as  $[(0.9 \cdot \text{NO}_3 \text{ as N} + 0.17 \cdot \text{ClO}_3 + 0.18 \cdot \text{ClO}_4) \cdot \text{Flow} \cdot 1440 / 1000000 \cdot 8.34]$ .

Table 7 - AP Area Operational Metrics

Nevada Environmental Response Trust   Groundwater Extraction and Treatment System   Enhanced Operational Metrics																
Date	E1-1		E1-2		E1-3		E2-1		E2-2		E2-3		E2-4		E2-5	
	Flow (gpm)	Water Elevation (ft amsl)	Flow (gpm)	Water Elevation (ft amsl)	Flow (gpm)	Water Elevation (ft amsl)	Flow (gpm)	Water Elevation (ft amsl)	Flow (gpm)	Water Elevation (ft amsl)	Flow (gpm)	Water Elevation (ft amsl)	Flow (gpm)	Water Elevation (ft amsl)	Flow <sup>3</sup> (gpm)	Water Elevation (ft amsl)
06/01/22	2.8	1713.13	0.80	1711.48	0.85	1710.31	1.1	1713.62	1.0	1716.07	1.1	1717.05	1.0	1716.30	0.39	1713.37
06/02/22	2.8	1713.04	0.80	1711.26	0.84	1710.15	1.1	1713.54	0.97	1715.73	1.3	1716.06	1.0	1716.23	0.30	1713.50
06/03/22	2.9	1713.13	0.85	1710.96	0.85	1711.44	1.1	1714.50	1.0	1716.10	1.1	1717.12	1.1	1716.31	0.31	1713.79
06/04/22	2.9	1712.78	0.80	1711.07	0.87	1710.94	1.2	1714.52	1.0	1715.97	1.1	1716.97	1.1	1716.39	0.34	1713.40
06/05/22	2.9	1712.25	0.83	1711.84	0.87	1710.38	1.2	1713.66	1.1	1715.99	1.0	1717.97	1.1	1717.01	0.40	1713.21
06/06/22	2.9	1712.09	0.83	1711.63	0.85	1710.65	1.2	1713.61	1.0	1715.67	1.0	1717.83	1.1	1716.26	0.38	1713.50
06/07/22	3.0	1710.85	0.84	1711.66	0.81	1710.47	1.1	1713.33	1.0	1715.58	1.1	1717.29	1.1	1716.11	0.36	1712.18
06/08/22	2.9	1710.76	0.83	1711.35	0.88	1709.95	1.2	1713.02	1.0	1715.23	1.1	1717.06	1.1	1715.69	0.36	1711.60
06/09/22	2.9	1710.82	0.83	1711.19	0.93	1709.80	1.2	1712.97	1.0	1715.20	1.1	1716.82	1.1	1715.48	0.15	1719.41
06/10/22	2.9	1712.01	0.82	1711.35	0.83	1711.20	1.2	1713.02	1.0	1715.46	1.1	1717.06	1.1	1716.89	0.30	1715.91
06/11/22	3.0	1711.93	0.86	1711.19	0.94	1711.06	1.2	1712.97	1.0	1715.40	0.94	1716.82	1.1	1716.60	0.29	1715.81
06/12/22	3.0	1712.18	0.83	1711.86	0.89	1710.77	1.2	1713.97	0.95	1715.27	0.93	1717.67	1.1	1716.96	0.29	1715.68
06/13/22	2.9	1711.27	0.79	1711.73	0.91	1711.62	1.2	1713.71	1.0	1714.25	0.94	1717.60	1.0	1717.90	0.31	1715.36
06/14/22	3.0	1712.34	0.83	1711.65	0.87	1712.50	1.2	1713.56	0.91	1713.71	0.89	1717.84	1.1	1717.85	0.28	1715.47
06/15/22	3.0	1712.48	0.76	1711.64	0.90	1713.37	1.2	1712.71	0.97	1715.90	0.88	1718.59	1.0	1716.20	0.25	1714.07
6/16/22 <sup>2</sup>	2.9	1712.82	0.82	1711.70	0.55	1714.59	1.2	1713.30	0.91	1716.57	1.3	1717.50	1.0	1717.03	0.28	1714.77
06/17/22	3.0	1713.91	0.87	1711.81	0.38	1716.67	1.0	1713.69	0.96	1716.87	0.98	1717.26	1.0	1717.74	0.23	1715.63
6/18/22 <sup>2</sup>	2.8	1714.47	0.78	1713.63	0.76	1715.70	1.2	1714.64	0.99	1716.80	1.0	1717.74	1.0	1717.66	0.25	1715.60
06/19/22	2.9	1715.01	0.87	1710.65	0.82	1714.44	1.1	1714.53	0.94	1719.83	1.1	1719.53	1.0	1718.59	0.00	1720.31
06/20/22	3.0	1712.16	0.86	1710.24	0.81	1713.07	1.1	1714.24	1.0	1715.62	1.3	1714.17	1.1	1716.11	0.13	1720.47
06/21/22	3.1	1711.01	0.87	1709.90	0.83	1712.02	1.1	1712.74	1.0	1714.28	1.2	1713.33	1.1	1715.99	0.42	1709.86
06/22/22	3.0	1711.78	0.80	1709.70	0.80	1712.79	1.1	1712.85	1.0	1715.92	1.3	1714.72	1.1	1714.61	0.38	1709.68
06/23/22	3.0	1711.72	0.87	1709.81	0.82	1712.65	1.1	1711.65	1.0	1715.81	1.3	1714.37	1.1	1714.49	0.37	1709.44
06/24/22	3.1	1711.69	0.93	1710.09	0.84	1712.84	1.1	1715.29	1.0	1716.55	1.3	1715.79	1.1	1715.73	0.36	1711.88
06/25/22	3.0	1711.77	0.92	1709.59	0.83	1712.51	1.1	1713.23	1.0	1715.79	1.2	1714.49	1.1	1714.64	0.39	1711.80
06/26/22	3.1	1711.68	0.91	1710.21	0.84	1712.74	1.1	1713.04	1.0	1716.05	1.3	1715.33	1.1	1714.00	0.36	1712.12
06/27/22	3.1	1711.38	0.93	1710.30	0.82	1712.57	1.1	1709.77	1.0	1715.85	1.3	1715.20	1.1	1716.42	0.31	1709.32
06/28/22	3.0	1711.43	0.90	1710.17	0.85	1712.68	1.1	1715.57	1.1	1715.81	1.3	1715.09	1.1	1716.10	0.53	1709.52
06/29/22	3.1	1712.27	0.94	1710.75	0.83	1711.97	1.1	1715.63	1.0	1715.87	1.3	1714.96	1.0	1715.75	0.36	1710.11
06/30/22	3.1	1712.18	0.93	1710.90	0.82	1712.12	1.1	1715.57	1.0	1716.00	1.3	1714.92	0.75	1715.71	0.33	1711.82
Monthly Average	3.0	1712.21	0.85	1711.05	0.82	1712.13	1.1	1713.61	1.0	1715.84	1.1	1716.47	1.1	1716.29	0.31	1713.62
Analytical <sup>1</sup>	Conc (mg/L)	Date	Conc (mg/L)	Date	Conc (mg/L)	Date	Conc (mg/L)	Date	Conc (mg/L)	Date	Conc (mg/L)	Date	Conc (mg/L)	Date	Conc (mg/L)	Date
Perchlorate	500	6/2/2022	790	6/2/2022	400	6/2/2022	81	6/2/2022	320	6/2/2022	690	6/2/2022	770	6/2/2022	910	6/2/2022
Hexavalent Chromium	0.086	6/2/2022	0.51	6/2/2022	0.63	6/2/2022	0.028	6/2/2022	0.028	6/2/2022	0.082	6/2/2022	0.080	6/2/2022	0.225	6/2/2022
Total Chromium	0.087 B	6/2/2022	0.53 B	6/2/2022	0.64 B	6/2/2022	0.035 B	6/2/2022	0.032 B	6/2/2022	0.097 B	6/2/2022	0.081 B	6/2/2022	0.235 B	6/2/2022

Notes:  
 Flow reported as gpm is a daily average calculated from the totalizer reading.  
 The flow rate at individual wells is adjusted daily to maintain the water level in the wells above the pump.  
 B = Compound was found in the blank and sample.  
 1: Analytical results are reported from Eurofins TestAmerica.  
 2: On 06/16 and 06/18, AP Area wells offline due to maintenance.  
 3: From 06/19, E2-5 flow meter faulted.  
 4: Duplicates taken on 06/02 for well E2-5; average of both values is presented and used for calculations.

Figure 1 - GW-11 Pond Volume and FBR Influent Perchlorate Concentration

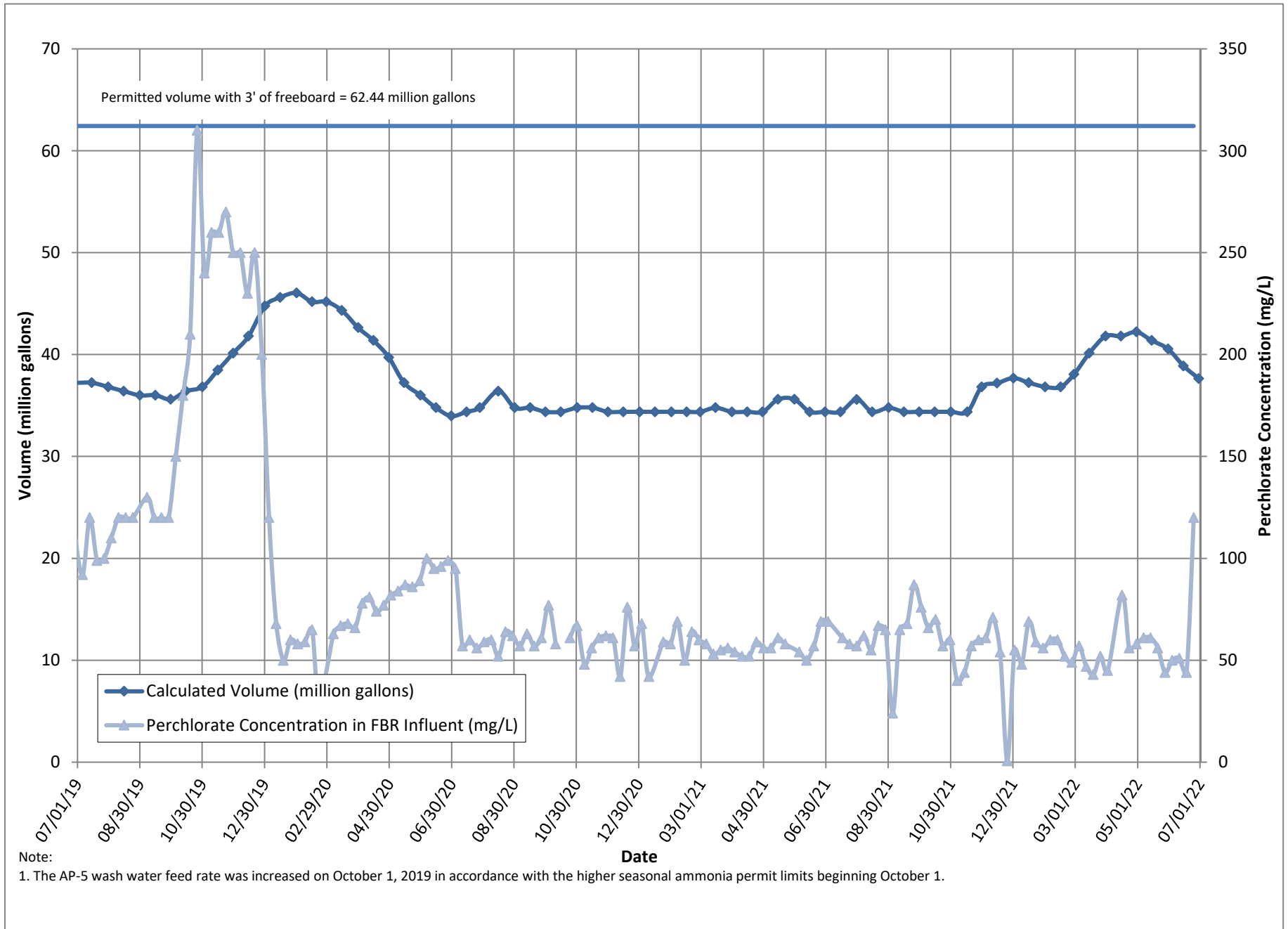


Figure 2 - FBR Equivalent Loading Calculation

