

Table 1 - Seep Well Field (SWF) Operational Metrics

Nevada Environmental Response Trust   Groundwater Extraction and Treatment System   Enhanced Operational Metrics																											
Date	LS #1 Flow (gpm)	PC-116R (East Well)		PC-99R2/R3 (Center Well)		PC-115R (West Well)		PC-117		PC-118		PC-119		PC-120		PC-121		PC-133									
		Flow (gpm)	Water Elevation (ft amsl)	Flow <sup>3</sup> (gpm)	Water Elevation (ft amsl)	Flow <sup>4</sup> (gpm)	Water Elevation (ft amsl)	Flow (gpm)	Water Elevation (ft amsl)	Flow (gpm)	Water Elevation (ft amsl)	Flow (gpm)	Water Elevation (ft amsl)	Flow (gpm)	Water Elevation (ft amsl)	Flow (gpm)	Water Elevation (ft amsl)	Flow (gpm)	Water Elevation <sup>6</sup> (ft amsl)								
03/01/21 <sup>1</sup>	432	160	1536.81	51	1541.29	128	1542.76	106	1536.71	70	1547.04	100	1547.94	49	1549.04	20	1549.98	9.8	1521.64								
03/02/21	482	163	1536.48	95	1539.98	130	1542.56	108	1536.42	71	1546.92	102	1547.83	50	1548.97	20	1549.94	10	1521.33								
03/03/21	483	163	1536.41	95	1539.84	130	1542.54	108	1536.39	71	1546.91	102	1547.82	50	1548.96	20	1549.93	10	1520.36								
03/04/21	481	163	1536.36	95	1539.84	130	1542.52	108	1536.35	71	1546.90	102	1547.80	50	1548.94	20	1549.91	10.0	< 1520.00								
03/05/21	481	163	1536.36	95	1539.81	130	1542.53	108	1536.34	71	1546.91	102	1547.81	50	1548.95	20	1549.92	9.9	< 1520.00								
03/06/21	478	163	1536.35	95	1539.75	130	1542.54	108	1536.34	71	1546.93	102	1547.83	50	1548.97	20	1549.95	9.8	< 1520.00								
03/07/21	470	163	1536.35	95	1539.74	130	1542.55	108	1536.34	71	1546.95	102	1547.84	50	1548.98	20	1549.96	9.8	< 1520.00								
03/08/21	479	163	1536.38	95	1539.71	130	1542.60	108	1536.36	71	1546.98	102	1547.88	50	1549.02	20	1550.00	9.8	< 1520.00								
03/09/21	474	163	1536.41	95	1539.71	130	1542.64	108	1536.38	71	1547.02	102	1547.92	50	1549.06	20	1550.04	9.8	< 1520.00								
03/10/21	473	163	1536.44	95	1539.71	130	1542.67	108	1536.41	71	1547.06	102	1547.95	50	1549.10	20	1550.09	9.8	< 1520.00								
03/11/21	471	163	1536.48	95	1539.71	130	1542.70	108	1536.42	71	1547.09	102	1547.99	50	1549.14	20	1550.12	9.8	< 1520.00								
03/12/21	471	163	1536.52	95	1539.72	130	1542.73	108	1536.45	71	1547.13	102	1548.03	50	1549.18	20	1550.17	9.8	< 1520.00								
03/13/21	470	163	1536.57	95	1539.70	130	1542.77	108	1536.48	71	1547.18	102	1548.07	50	1549.22	20	1550.21	9.8	< 1520.00								
03/14/21	470	163	1536.60	95	1539.68	130	1542.81	108	1536.50	71	1547.22	102	1548.12	50	1549.27	20	1550.26	9.8	< 1520.00								
03/15/21	470	163	1536.63	96	1539.61	130	1542.85	108	1536.53	71	1547.26	102	1548.16	50	1549.31	20	1550.31	9.8	< 1520.00								
03/16/21	478	163	1536.65	96	1539.61	130	1542.86	108	1536.54	71	1547.28	102	1548.18	50	1549.33	20	1550.33	9.7	< 1520.00								
03/17/21	479	163	1536.68	96	1539.63	131	1542.88	108	1536.55	71	1547.30	102	1548.20	50	1549.35	20	1550.35	9.8	< 1520.00								
03/18/21	475	163	1536.72	96	1539.63	131	1542.90	108	1536.57	71	1547.33	103	1548.22	50	1549.38	20	1550.37	9.8	< 1520.00								
03/19/21	477	163	1536.73	96	1539.62	131	1542.92	108	1536.58	71	1547.35	103	1548.24	50	1549.39	20	1550.39	9.8	< 1520.00								
03/20/21	469	163	1536.74	96	1539.59	131	1542.93	108	1536.59	71	1547.36	103	1548.25	50	1549.40	20	1550.39	9.8	< 1520.00								
03/21/21	471	163	1536.74	96	1539.60	131	1542.93	108	1536.59	71	1547.37	102	1548.25	50	1549.40	20	1550.39	9.8	< 1520.00								
03/22/21	470	163	1536.75	96	1539.59	131	1542.94	108	1536.59	71	1547.38	102	1548.26	50	1549.41	20	1550.40	9.8	< 1520.00								
03/23/21	470	163	1536.75	96	1539.56	131	1542.94	108	1536.59	71	1547.38	102	1548.26	50	1549.41	20	1550.39	9.8	< 1520.00								
03/24/21	476	162	1536.82	96	1539.60	130	1542.94	108	1536.61	71	1547.39	102	1548.25	50	1549.40	20	1550.38	9.8	1520.01								
03/25/21	456	162	1536.98	96	1539.68	130	1542.99	107	1536.73	71	1547.42	102	1548.27	50	1549.41	20	1550.39	9.9	1520.29								
03/26/21	459	163	1536.86	96	1539.69	131	1542.93	108	1536.63	71	1547.37	102	1548.22	50	1549.36	20	1550.35	9.9	< 1520.00								
03/27/21	458	163	1543.55	96	1539.72	131	1542.91	108	1536.60	71	1547.35	102	1548.19	50	1549.33	20	1550.32	9.9	< 1520.00								
03/28/21	457	163	1550.00	96	1539.69	131	1542.90	108	1536.58	71	1547.35	102	1548.18	50	1549.32	20	1550.31	9.9	< 1520.00								
03/29/21	456	163	1550.00	96	1539.59	131	1542.90	108	1536.57	71	1547.35	102	1548.18	50	1549.32	20	1550.31	9.9	< 1520.00								
03/30/21	456	163	1550.00	96	1539.63	131	1542.87	108	1536.53	71	1547.33	102	1548.14	50	1549.29	20	1550.27	9.8	< 1520.00								
03/31/21	463	163	1550.00	96	1539.68	131	1542.85	108	1536.51	71	1547.31	102	1548.12	50	1549.26	20	1550.24	9.8	< 1520.00								
Monthly Average	470	163	1538.55	94	1539.74	130	1542.79	108	1536.51	71	1547.20	102	1548.08	50	1549.22	20	1550.21	9.8	1520.12								
Analytical <sup>5</sup>	Conc (mg/L)		Date	Conc (mg/L)		Date	Conc (mg/L)		Date	Conc (mg/L)		Date	Conc (mg/L)		Date	Conc (mg/L)		Date	Conc (mg/L)		Date						
Perchlorate	15		3/2/2021	11.0		3/2/2021	3.3		3/2/2021	11		3/2/2021	1.7		3/2/2021	0.27		3/2/2021	0.0045		3/2/2021	0.0013		3/2/2021	2.3		3/2/2021
Hexavalent Chromium	0.0030		3/2/2021	ND		3/2/2021	ND		3/2/2021	0.0039		3/2/2021	ND		3/2/2021	ND		3/2/2021	ND		3/2/2021	ND		3/2/2021	ND		3/2/2021
Total Chromium	0.0026 J		3/2/2021	ND		3/2/2021	ND		3/2/2021	0.0048 J		3/2/2021	ND		3/2/2021	ND		3/2/2021	0.0006 J		3/2/2021	ND		3/2/2021	ND		3/2/2021

Notes:  
 Flow reported as gpm is a daily average calculated from the totalizer reading.  
 ND = Not detected above laboratory method detection limit (Cr(TR)=2.5 ug/L, Cr(VI) =0.20 ug/L).  
 J = Result is less than the reporting limit but greater than or equal to the method detection limit and the concentration is an approximate value.  
 1: Analytical results are reported from Eurofins TestAmerica.  
 2: On 03/01 SWF offline briefly due to maintenance.  
 5: Duplicates taken on 03/2 for well PC-120; average of both values is presented and used for calculations.  
 6: A "<" preceding the water elevation indicates the reported water level is below the transducer. Average monthly water elevation calculations include the transducer elevation in instances where the water level is below the transducer.

Nevada Environmental Response Trust   Groundwater Extraction and Treatment System   Enhanced Operational Metrics																	
Date	LS #3 Flow <sup>2</sup> (gpm)	ART-1/1A		ART-2/2A		ART-3/3A		ART-4/4A		ART-9		ART-7A/7B		ART-8/8A		PC-150	
		Flow (gpm)	Water Elevation (ft amsl)	Flow <sup>3</sup> (gpm)	Water Elevation (ft amsl)	Flow <sup>3</sup> (gpm)	Water Elevation <sup>7</sup> (ft amsl)	Flow <sup>4</sup> (gpm)	Water Elevation (ft amsl)	Flow (gpm)	Water Elevation (ft amsl)	Flow (gpm)	Water Elevation (ft amsl)	Flow <sup>5</sup> (gpm)	Water Elevation (ft amsl)	Flow <sup>4</sup> (gpm)	Water Elevation (ft amsl)
03/01/21 <sup>2</sup>	396	41	1583.59	149	1583.28	20	1585.86	3.3	1578.92	55	1577.63	19	1584.49	168	1583.17	1.5	1578.78
03/02/21	402	42	1583.57	152	1583.23	21	1585.82	3.4	1580.00	55	1577.57	19	1584.48	171	1583.13	1.5	1578.65
03/03/21	401	42	1583.56	152	1583.21	21	1585.81	3.3	1582.64	55	1577.55	19	1584.47	171	1583.11	1.5	1578.65
03/04/21	398	42	1583.54	152	1583.19	21	1585.81	3.3	1580.30	55	1577.55	19	1584.47	171	1583.09	1.5	1578.64
03/05/21	398	42	1583.54	152	1583.19	21	1585.83	3.4	1578.85	55	1577.55	19	1584.47	171	1583.10	1.5	1578.64
03/06/21	401	42	1583.54	152	1583.19	21	1585.83	3.4	1578.85	55	1577.54	19	1584.47	171	1583.10	1.5	1578.64
03/07/21	401	42	1583.53	152	1583.19	21	1585.83	3.4	1578.85	55	1577.55	19	1584.47	171	1583.09	1.5	1578.64
03/08/21	401	42	1583.53	152	1583.19	21	1585.84	3.4	1578.85	55	1577.56	19	1584.47	171	1583.09	1.5	1578.64
03/09/21	401	42	1583.53	151	1583.19	21	1585.84	3.3	1578.85	55	1577.57	19	1584.50	171	1583.09	1.5	1578.64
03/10/21	401	42	1583.52	151	1583.18	21	1585.85	3.3	1578.84	55	1577.58	19	1584.50	171	1583.09	1.5	1578.64
03/11/21	398	42	1583.52	151	1583.18	21	1585.85	3.3	1578.84	55	1577.57	19	1584.50	171	1583.09	1.5	1578.64
03/12/21	398	42	1583.53	151	1583.19	21	1585.86	3.3	1578.84	55	1577.58	19	1584.50	171	1583.09	1.5	1578.64
03/13/21	401	42	1583.54	152	1583.20	21	1585.87	3.3	1578.84	55	1577.59	19	1584.50	171	1583.10	1.5	1578.64
03/14/21	401	42	1583.55	152	1583.22	21	1585.89	3.3	1578.84	55	1577.60	19	1584.51	171	1583.12	1.5	1578.64
03/15/21	398	42	1583.57	152	1583.24	21	1585.90	3.4	1578.84	55	1577.60	19	1584.51	171	1583.13	1.5	1578.64
03/16/21	401	42	1583.56	152	1583.24	21	1585.90	3.4	1578.84	55	1577.59	19	1584.51	171	1583.13	1.5	1578.64
03/17/21	401	42	1583.57	152	1583.25	21	1585.91	3.4	1578.84	55	1577.59	19	1584.52	171	1583.14	1.5	1578.64
03/18/21	401	42	1583.58	152	1583.26	21	1585.93	3.4	1578.84	55	1577.61	19	1584.52	170	1583.15	1.5	1578.64
03/19/21	398	42	1583.58	152	1583.27	21	1585.94	3.4	1578.84	55	1577.62	19	1584.52	170	1583.15	1.5	1578.64
03/20/21	401	42	1583.59	152	1583.27	21	1585.95	3.4	1578.84	55	1577.61	19	1584.52	170	1583.16	1.5	1578.64
03/21/21	401	42	1583.58	152	1583.27	21	1585.95	3.4	1578.84	55	1577.63	19	1584.52	170	1583.16	1.5	1578.64
03/22/21	401	42	1583.58	152	1583.27	21	1585.96	3.4	1578.84	55	1577.68	19	1584.52	170	1583.16	1.5	1578.64
03/23/21	401	42	1583.58	152	1583.27	21	1585.96	3.4	1578.84	55	1577.73	19	1584.51	170	1583.16	1.5	1578.64
03/24/21	401	42	1583.58	152	1583.27	21	1585.96	3.4	1578.84	55	1577.74	19	1584.51	170	1583.15	1.5	1578.64
03/25/21	401	42	1583.58	152	1583.27	21	1585.96	3.4	1578.84	55	1577.73	19	1584.52	170	1583.16	1.5	1578.64
03/26/21	401	42	1583.56	152	1583.25	21	1585.95	3.4	1578.84	55	1577.71	19	1584.51	170	1583.14	1.5	1578.64
03/27/21	401	42	1583.55	152	1583.24	21	1585.94	3.4	1578.84	55	1577.72	19	1584.50	171	1583.13	1.5	1578.64
03/28/21	401	42	1583.55	152	1583.24	21	1585.94	3.4	1578.84	55	1577.71	19	1584.50	170	1583.13	1.5	1578.64
03/29/21	398	42	1583.55	152	1583.24	21	1585.95	3.4	1578.84	55	1577.71	19	1584.50	170	1583.13	1.5	1578.64
03/30/21	397	42	1583.53	151	1583.22	21	1585.93	3.4	1578.84	55	1577.69	19	1584.49	170	1583.12	1.5	1578.64
03/31/21	401	42	1583.52	151	1583.21	21	1585.93	3.3	1578.84	55	1577.68	19	1584.48	170	1583.11	1.5	1578.63
Monthly Average	400	42	1583.55	152	1583.23	21	1585.90	3.4	1579.05	55	1577.62	19	1584.50	170	1583.12	1.5	1578.64
Analytical <sup>1</sup>		Conc (mg/L)	Date	Conc (mg/L)	Date	Conc (mg/L)	Date	Conc (mg/L)	Date	Conc (mg/L)	Date	Conc (mg/L)	Date	Conc (mg/L)	Date	Conc (mg/L)	Date
Perchlorate		25	3/2/2021	9.5	3/2/2021	180	3/2/2021	120	3/2/2021	140	3/2/2021	73	3/2/2021	69	3/2/2021	48	3/2/2021
Hexavalent Chromium		ND	3/2/2021	0.0045	3/2/2021	0.32	3/2/2021	0.14	3/2/2021	0.58	3/2/2021	0.45	3/2/2021	0.077	3/2/2021	0.043	3/2/2021
Total Chromium		ND	3/2/2021	ND	3/2/2021	0.30 B	3/2/2021	0.13 B	3/2/2021	0.58 B	3/2/2021	0.48 B	3/2/2021	0.080 B	3/2/2021	0.047 B	3/2/2021

Notes:  
 Flow reported as gpm is a daily average calculated from the totalizer reading.  
 ND = Not detected above laboratory method detection limit (ClO<sub>2</sub> = 0.5 ug/L; ClO<sub>3</sub> = 10 ug/L; NO<sub>3</sub>-N = 0.055 mg/L, Cr(VI) = 0.25 ug/L).  
 B = Compound was found in the blank and sample.  
 ART-1, 2, 3, 4, 7B, and 8 have adjacent recovery wells, both of which can be used for extraction. The pumping well can be chosen manually or automatically, based on operational considerations. The wells with transducers are ART-1, -2, -3, -4, -7A, -8, -9, and PC-150.  
 1: Analytical results are reported from Eurofins TestAmerica.  
 2: On 03/01 AWF offline briefly due to maintenance.  
 3: On 03/02, ART-4 switched to ART-4A until 03/04  
 4: Conducted periodic bucket tests to confirm flow rates for PC-150. Average flow of 1.5 gpm determined from flow tests is presented for 01/01-01/31 flows and used for calculation purposes. Flow was steady throughout the month but the totalizer showed zero flow because totalizer units are 1,000 gallons.  
 5: Duplicates taken on 03/02 for well ART8/8A; average of both values is presented and used for calculations.

Table 3 - Interceptor Well Field (IWF) Operational Metrics

Nevada Environmental Response Trust   Groundwater Extraction and Treatment System   Enhanced Operational Metrics																				
Date	I-AR		I-AA		I-AB		I-AC		I-AD		I-B		I-C		I-D		I-E		I-F	
	Flow (gpm)	Water Elevation (ft amsl)	Flow (gpm)	Water Elevation (ft amsl)	Flow (gpm)	Water Elevation (ft amsl)	Flow (gpm)	Water Elevation (ft amsl)	Flow (gpm)	Water Elevation (ft amsl)	Flow (gpm)	Water Elevation (ft amsl)	Flow (gpm)	Water Elevation (ft amsl)	Flow (gpm)	Water Elevation (ft amsl)	Flow (gpm)	Water Elevation (ft amsl)	Flow (gpm)	Water Elevation (ft amsl)
03/01/21	0.11	1723.37	1.0	1707.61	0.00	1719.63	0.00	1726.53	0.75	1722.65	0.36	1715.69	3.8	1708.18	1.6	1721.29	1.0	1717.63	4.3	1720.69
03/02/21	0.38	1718.32	1.0	1707.63	0.00	1719.66	0.00	1726.55	0.77	1722.60	0.28	1716.59	3.7	1708.27	1.5	1721.27	0.99	1717.78	4.2	1720.70
03/03/21	0.25	1719.69	1.0	1707.66	0.00	1719.67	0.00	1726.54	0.80	1722.38	0.30	1716.45	3.7	1708.17	1.5	1721.25	0.99	1717.80	4.3	1720.68
03/04/21	0.40	1715.43	1.0	1707.64	0.00	1719.64	0.00	1726.47	0.80	1722.32	0.33	1715.66	3.7	1708.24	1.5	1721.24	1.0	1717.75	4.2	1720.66
03/05/21	0.39	1715.28	1.0	1707.61	0.00	1719.67	0.00	1726.48	0.81	1722.27	0.28	1716.51	3.7	1708.26	1.5	1721.22	1.00	1717.63	4.2	1720.65
03/06/21	0.39	1715.28	1.0	1707.57	0.00	1719.67	0.00	1726.49	0.82	1722.24	0.28	1716.65	3.7	1708.18	1.5	1721.20	1.0	1717.53	4.3	1720.62
03/07/21	0.39	1715.28	1.0	1707.57	0.00	1719.65	0.00	1726.45	0.83	1722.19	0.29	1716.24	3.7	1708.19	1.5	1721.17	1.00	1717.57	4.3	1720.60
03/08/21	0.32	1716.08	1.0	1707.62	0.00	1719.65	0.00	1726.43	0.83	1722.15	0.28	1716.38	3.7	1708.19	1.5	1721.14	0.99	1717.63	4.3	1720.58
03/09/21	0.21	1720.75	1.0	1707.62	0.0	1719.65	0.00	1726.42	0.83	1722.15	0.28	1716.28	3.7	1708.19	1.5	1721.11	0.97	1717.67	4.3	1720.57
03/10/21	0.21	1721.54	1.0	1707.70	0.00	1719.67	0.00	1726.45	0.82	1722.24	0.23	1717.18	3.7	1708.36	1.5	1721.09	0.97	1717.64	4.2	1720.57
03/11/21 <sup>2</sup>	0.18	1722.21	0.93	1708.96	0.012	1719.50	0.01	1726.32	0.76	1722.49	0.16	1718.61	3.4	1709.89	1.3	1721.15	0.91	1717.89	3.7	1720.72
03/12/21 <sup>2</sup>	0.34	1720.63	0.96	1708.74	0.00	1719.80	0.00	1727.30	0.86	1721.93	0.41	1713.73	3.4	1709.69	1.4	1721.19	1.0	1717.25	3.8	1720.78
03/13/21 <sup>2</sup>	0.30	1717.44	1.0	1707.75	0.00	1719.72	0.00	1727.14	0.98	1721.24	0.48	1710.91	3.6	1708.48	1.5	1721.16	1.1	1716.77	4.2	1720.65
03/14/21	0.20	1721.09	1.0	1707.57	0.00	1719.69	0.00	1727.02	1.01	1720.99	0.45	1711.35	3.6	1708.19	1.5	1721.09	1.1	1716.70	4.3	1720.55
03/15/21	0.21	1721.48	1.0	1707.57	0.00	1719.67	0.00	1727.00	1.02	1720.95	0.45	1711.32	3.6	1708.19	1.6	1721.02	1.1	1716.77	4.3	1720.52
03/16/21 <sup>2</sup>	0.37	1718.51	0.98	1708.27	0.00	1719.76	0.00	1727.00	0.99	1721.11	0.30	1716.30	3.5	1709.15	1.4	1721.05	1.0	1717.14	4.0	1720.59
03/17/21 <sup>2</sup>	0.33	1718.70	0.90	1709.38	0.00	1719.87	0.00	1726.76	0.92	1721.32	0.22	1718.37	3.2	1710.50	1.1	1721.17	0.94	1717.53	3.6	1720.71
03/18/21	0.40	1715.83	1.0	1707.63	0.00	1719.78	0.00	1726.80	1.09	1720.45	0.25	1717.55	3.6	1708.18	1.2	1721.25	0.99	1717.54	4.3	1720.56
03/19/21	0.40	1715.30	1.0	1707.66	0.00	1719.73	0.00	1726.75	1.07	1720.62	0.22	1717.68	3.6	1708.32	1.2	1721.23	1.0	1717.34	4.2	1720.50
03/20/21	0.41	1715.29	1.0	1707.63	0.00	1719.71	0.00	1726.70	1.07	1720.60	0.28	1716.42	3.6	1708.20	1.2	1721.19	1.0	1717.22	4.3	1720.46
03/21/21	0.35	1716.03	1.0	1707.67	0.00	1719.66	0.00	1726.70	1.01	1720.97	0.28	1715.27	3.6	1708.30	1.4	1721.10	0.99	1717.40	4.2	1720.44
03/22/21 <sup>2</sup>	0.37	1717.45	1.0	1707.62	0.00	1719.64	0.00	1726.70	1.00	1721.09	0.38	1713.05	3.6	1708.29	1.4	1721.05	1.0	1717.03	4.2	1720.42
03/23/21 <sup>2</sup>	0.35	1718.18	0.94	1709.05	0.00	1719.69	0.00	1726.71	0.91	1721.65	0.33	1714.87	3.3	1709.61	1.3	1721.10	0.96	1717.48	3.8	1720.55
03/24/21 <sup>2</sup>	0.28	1718.21	1.0	1708.17	0.00	1719.73	0.00	1726.79	1.05	1720.81	0.41	1713.56	3.6	1708.88	1.4	1721.08	1.0	1717.21	4.1	1720.53
03/25/21	0.18	1721.39	1.0	1707.58	0.00	1719.63	0.00	1726.74	1.10	1720.45	0.47	1710.70	3.6	1708.21	1.5	1721.00	1.1	1716.99	4.3	1720.42
03/26/21	0.07	1723.81	1.0	1707.95	0.00	1719.63	0.00	1726.66	1.06	1720.66	0.38	1713.90	3.5	1708.35	1.5	1720.93	1.0	1717.09	4.2	1720.38
03/27/21	0.35	1719.55	1.0	1707.73	0.00	1719.59	0.00	1726.58	1.07	1720.63	0.38	1713.59	3.6	1708.19	1.5	1720.85	1.0	1716.97	4.3	1720.34
03/28/21 <sup>2</sup>	0.31	1718.87	0.99	1708.32	0.00	1719.60	0.00	1726.55	1.02	1720.96	0.34	1714.91	3.5	1708.42	1.4	1720.85	1.0	1717.17	4.2	1720.36
03/29/21 <sup>2</sup>	0.29	1719.28	0.92	1709.68	0.00	1719.69	0.00	1726.51	0.90	1721.85	0.36	1713.36	3.3	1709.44	1.2	1721.04	0.92	1717.77	3.9	1720.55
03/30/21 <sup>2</sup>	0.28	1719.18	0.97	1708.75	0.00	1719.60	0.00	1726.55	0.93	1721.71	0.40	1711.48	3.6	1708.59	1.3	1721.13	1.00	1717.37	4.2	1720.48
03/31/21	0.31	1718.47	0.98	1708.54	0.00	1719.56	0.00	1726.50	0.96	1721.52	0.43	1711.09	3.6	1708.21	1.2	1721.11	1.0	1717.26	4.3	1720.39
Monthly Average	0.30	1718.64	1.00	1708.01	0.00	1719.67	0.00	1726.66	0.93	1721.52	0.33	1714.89	3.6	1708.56	1.4	1721.12	1.0	1717.37	4.2	1720.56
Analytical <sup>1</sup>	Conc (mg/L)	Date	Conc (mg/L)	Date	Conc (mg/L)	Date	Conc (mg/L)	Date	Conc (mg/L)	Date	Conc (mg/L)	Date	Conc (mg/L)	Date	Conc (mg/L)	Date	Conc (mg/L)	Date	Conc (mg/L)	Date
Perchlorate	410	3/11/2021	34	3/11/2021	150	3/11/2021	190	3/11/2021	180	3/11/2021	380	3/11/2021	480	3/10/2021	330	3/10/2021	340	3/10/2021	520	3/10/2021
Hexavalent Chromium	0.47	3/11/2021	0.055	3/11/2021	ND	3/11/2021	1.7	3/11/2021	1.7	3/11/2021	0.25	3/11/2021	3.4	3/10/2021	5.5	3/10/2021	6.5	3/10/2021	13	3/10/2021
Total Chromium	12	3/11/2021	0.057	3/11/2021	0.024	3/11/2021	1.8	3/11/2021	1.8	3/11/2021	0.27	3/11/2021	2.9	3/10/2021	4.5	3/10/2021	5.5	3/10/2021	12	3/10/2021

Notes:  
 Flow reported as gpm is a daily average calculated from the totalizer reading.  
 1: Analytical results are reported from Eurofins TestAmerica.  
 2: On 03/11, 03/12, 03/13, 03/16, 03/17, 03/21, 03/22, 03/23, 03/24, 3/28, 3/29, and 3/30 IWF offline intermittently due to maintenance at GWTP.

Table 3 - Interceptor Well Field (IWF) Operational Metrics

Nevada Environmental Response Trust   Groundwater Extraction and Treatment System   Enhanced Operational Metrics																				
Date	I-G		I-H		I-I		I-J		I-K		I-L		I-M		I-N		I-O		I-P	
	Flow <sup>3</sup> (gpm)	Water Elevation (ft amsl)	Flow <sup>4</sup> (gpm)	Water Elevation (ft amsl)	Flow (gpm)	Water Elevation (ft amsl)	Flow (gpm)	Water Elevation (ft amsl)	Flow (gpm)	Water Elevation (ft amsl)	Flow (gpm)	Water Elevation (ft amsl)	Flow <sup>4</sup> (gpm)	Water Elevation (ft amsl)	Flow <sup>3,4</sup> (gpm)	Water Elevation (ft amsl)	Flow <sup>3,5</sup> (gpm)	Water Elevation (ft amsl)	Flow (gpm)	Water Elevation (ft amsl)
03/01/21	0.18	1722.23	0.88	1721.63	5.0	1722.88	7.2	1712.63	3.9	1708.15	1.2	1717.02	1.8	1721.11	3.0	1719.91	0.51	1722.72	1.8	1722.71
03/02/21	0.16	1722.28	0.89	1721.66	4.9	1722.93	7.2	1712.55	3.9	1708.25	1.2	1717.17	1.8	1721.11	2.9	1719.95	0.46	1722.77	1.8	1722.75
03/03/21	0.15	1722.31	0.91	1721.63	5.0	1722.94	7.3	1712.30	3.9	1708.15	1.2	1717.03	1.8	1721.08	2.9	1719.94	0.44	1722.80	1.8	1722.77
03/04/21	0.19	1722.22	1.0	1721.31	4.9	1722.91	7.2	1712.72	3.9	1708.21	1.1	1717.13	1.9	1720.93	3.1	1719.85	0.42	1722.77	1.7	1722.75
03/05/21	0.19	1722.21	1.1	1720.96	4.9	1722.92	7.2	1712.69	3.9	1708.23	1.2	1717.02	2.1	1720.75	3.3	1719.77	0.44	1722.77	1.7	1722.77
03/06/21	0.19	1722.21	1.1	1721.02	4.9	1722.93	7.3	1712.37	3.9	1708.15	1.2	1716.86	2.1	1720.69	3.2	1719.76	0.46	1722.78	1.7	1722.78
03/07/21	0.18	1722.20	1.1	1720.99	4.9	1722.91	7.3	1712.45	3.9	1708.15	1.2	1716.84	2.1	1720.65	3.2	1719.74	0.51	1722.73	1.7	1722.74
03/08/21	0.18	1722.19	1.1	1720.99	4.9	1722.90	7.3	1712.46	3.9	1708.15	1.2	1716.95	2.1	1720.61	3.2	1719.73	0.51	1722.72	1.6	1722.74
03/09/21	0.19	1722.18	1.1	1720.98	5.0	1722.90	7.2	1712.45	3.9	1708.15	1.2	1716.97	2.1	1720.58	3.2	1719.71	0.51	1722.71	1.7	1722.72
03/10/21	0.17	1722.20	1.1	1721.02	4.9	1722.92	7.2	1712.74	3.9	1708.32	1.1	1717.18	2.0	1720.58	3.0	1719.78	0.52	1722.72	1.6	1722.74
03/11/21 <sup>2</sup>	0.14	1722.24	0.95	1721.40	4.3	1723.11	6.5	1715.20	3.5	1709.95	1.0	1717.98	1.8	1720.78	2.7	1719.94	0.45	1722.80	1.4	1722.87
03/12/21 <sup>2</sup>	0.23	1722.11	0.95	1721.55	4.5	1723.19	6.8	1715.19	3.7	1709.66	1.0	1718.55	1.8	1720.81	2.9	1719.93	0.56	1722.86	1.4	1722.93
03/13/21 <sup>2</sup>	0.22	1722.10	1.0	1721.44	4.9	1723.07	7.3	1712.27	3.9	1708.50	1.0	1718.39	2.0	1720.65	3.2	1719.77	0.42	1722.87	1.5	1722.90
03/14/21	0.23	1722.09	1.0	1721.37	5.0	1723.00	7.4	1712.57	4.0	1708.15	1.1	1718.00	2.1	1720.54	3.4	1719.65	0.43	1722.83	1.7	1722.83
03/15/21	0.23	1722.09	1.0	1721.36	5.0	1722.99	7.4	1712.33	3.9	1708.15	1.1	1717.83	2.0	1720.51	3.4	1719.62	0.42	1722.83	1.7	1722.82
03/16/21 <sup>2</sup>	0.54	1721.48	0.96	1721.52	4.7	1723.08	7.0	1713.92	3.8	1709.06	0.97	1718.79	1.9	1720.61	3.2	1719.69	0.55	1722.81	1.5	1722.86
03/17/21 <sup>2</sup>	0.50	1721.50	0.86	1721.73	4.2	1723.22	6.5	1715.85	3.5	1710.08	0.88	1719.66	1.7	1720.79	2.9	1719.82	0.66	1722.83	1.4	1722.93
03/18/21	0.52	1721.44	1.00	1721.51	5.0	1723.05	7.5	1712.69	4.0	1708.15	1.0	1719.03	2.0	1720.63	3.4	1719.65	0.90	1722.75	1.7	1722.83
03/19/21	0.51	1721.43	0.98	1721.50	4.9	1723.01	7.4	1712.80	3.9	1708.28	1.0	1718.79	2.0	1720.63	3.4	1719.59	0.44	1722.82	1.7	1722.81
03/20/21	0.47	1721.49	1.0	1721.43	5.0	1722.98	7.4	1712.55	3.9	1708.15	1.0	1718.34	2.0	1720.58	3.4	1719.55	0.26	1722.85	1.7	1722.81
03/21/21	0.53	1721.34	0.99	1721.44	4.9	1722.98	7.3	1712.83	3.9	1708.29	1.2	1716.98	2.0	1720.54	3.4	1719.53	0.26	1722.84	1.7	1722.79
03/22/21 <sup>2</sup>	0.48	1721.44	0.96	1721.53	4.9	1722.98	7.3	1712.71	3.9	1708.26	1.2	1716.63	2.0	1720.47	3.4	1719.51	0.25	1722.84	1.7	1722.79
03/23/21 <sup>2</sup>	0.39	1721.60	0.87	1721.74	4.4	1723.17	6.7	1715.04	3.6	1709.74	1.1	1717.81	1.8	1720.66	2.9	1719.72	0.41	1722.89	1.6	1722.89
03/24/21 <sup>2</sup>	0.32	1721.77	0.95	1721.63	4.8	1723.13	7.3	1713.79	3.9	1708.81	1.1	1717.78	2.0	1720.60	3.1	1719.70	0.23	1722.95	1.7	1722.89
03/25/21	0.33	1721.76	1.00	1721.54	5.0	1723.05	7.5	1712.37	4.0	1708.15	1.2	1716.96	2.0	1720.47	3.3	1719.57	0.22	1722.92	1.8	1722.85
03/26/21	0.33	1721.72	0.97	1721.50	4.9	1723.01	7.3	1712.92	3.9	1708.34	1.2	1716.93	2.0	1720.47	3.3	1719.53	0.86	1722.73	1.8	1722.78
03/27/21	0.33	1721.70	0.96	1721.44	5.0	1722.92	7.3	1712.70	3.9	1708.15	1.2	1716.56	2.0	1720.42	3.3	1719.49	0.96	1722.62	1.8	1722.70
03/28/21 <sup>2</sup>	0.32	1721.72	0.96	1721.45	4.8	1722.95	7.2	1712.92	3.9	1708.41	1.2	1716.81	2.0	1720.45	3.2	1719.52	0.43	1722.75	1.8	1722.72
03/29/21 <sup>2</sup>	0.29	1721.81	0.89	1721.70	4.5	1723.20	6.9	1715.92	3.7	1709.52	1.1	1717.91	1.8	1720.66	2.9	1719.73	0.40	1722.90	1.6	1722.90
03/30/21 <sup>2</sup>	0.27	1721.83	0.96	1721.61	4.9	1723.11	7.4	1713.43	3.9	1708.51	1.1	1717.62	2.0	1720.59	3.0	1719.71	0.41	1722.91	1.6	1722.91
03/31/21	0.41	1721.53	0.97	1721.53	5.0	1723.01	7.4	1712.70	4.0	1708.15	1.1	1717.38	2.0	1720.52	3.1	1719.63	0.48	1722.83	1.7	1722.82
Monthly Average	0.30	1721.88	0.99	1721.42	4.8	1723.01	7.2	1713.20	3.9	1708.53	1.1	1717.58	2.0	1720.66	3.2	1719.71	0.48	1722.80	1.7	1722.81
Analytical <sup>6</sup>	Conc (mg/L)	Date	Conc (mg/L)	Date	Conc (mg/L)	Date	Conc (mg/L)	Date	Conc (mg/L)	Date	Conc (mg/L)	Date	Conc (mg/L)	Date	Conc (mg/L)	Date	Conc (mg/L)	Date	Conc (mg/L)	Date
Perchlorate	730	3/10/2021	800	3/10/2021	530	3/11/2021	190	3/11/2021	240	3/11/2021	200	3/11/2021	210	3/10/2021	420	3/10/2021	595	3/10/2021	720	3/10/2021
Hexavalent Chromium	17	3/10/2021	14	3/10/2021	7.7	3/11/2021	4.0	3/11/2021	2.4	3/11/2021	1.4	3/11/2021	6.6	3/10/2021	7.3	3/10/2021	12	3/10/2021	13	3/10/2021
Total Chromium	15	3/10/2021	14	3/10/2021	7.4	3/11/2021	4.0	3/11/2021	2.5	3/11/2021	1.5	3/11/2021	5.3	3/10/2021	6.8	3/10/2021	11	3/10/2021	13	3/10/2021

Notes:  
 Flow reported as gpm is a daily average calculated from the totalizer reading.  
 1: Analytical results are reported from Eurofins TestAmerica.  
 2: On 03/11, 03/12, 03/13, 03/16, 03/17, 03/21, 03/22, 03/23, 03/24, 3/28, 3/29, and 3/30 IWF offline intermittently due to maintenance at GWTP.  
 3: On 03/11, I-G, I-N, I-O, and I-W adjusted to meet target as directed by the Trust.  
 4: On 03/04, I-H, I-M, and I-N adjusted to meet flow target as directed by the Trust.  
 5: On 03/23, I-O and I-Q adjusted to meet target as directed by the Trust.  
 6: Duplicates taken on 03/11 for well I-O; average of both values is presented and used for calculations.

Table 3 - Interceptor Well Field (IWF) Operational Metrics

Nevada Environmental Response Trust   Groundwater Extraction and Treatment System   Enhanced Operational Metrics																				
Date	I-Q		I-R		I-S		I-T		I-U		I-V		I-W		I-X		I-Y		I-Z	
	Flow <sup>3,5,7</sup> (gpm)	Water Elevation (ft amsl)	Flow <sup>6,7,8</sup> (gpm)	Water Elevation (ft amsl)	Flow <sup>7,8,9,10</sup> (gpm)	Water Elevation (ft amsl)	Flow (gpm)	Water Elevation (ft amsl)	Flow <sup>7</sup> (gpm)	Water Elevation (ft amsl)	Flow (gpm)	Water Elevation (ft amsl)	Flow <sup>3,7,9</sup> (gpm)	Water Elevation (ft amsl)	Flow (gpm)	Water Elevation (ft amsl)	Flow <sup>7,9</sup> (gpm)	Water Elevation (ft amsl)	Flow (gpm)	Water Elevation (ft amsl)
03/01/21	0.22	1720.68	1.1	1719.02	2.3	1715.40	0.40	1718.86	0.68	1715.09	4.4	1721.70	0.52	1723.02	3.7	1717.37	1.2	1715.52	8.5	1714.37
03/02/21	0.16	1720.87	1.1	1719.29	2.3	1715.56	0.40	1718.90	0.67	1715.40	4.4	1721.79	0.48	1723.11	3.7	1717.41	1.2	1715.62	8.4	1714.58
03/03/21	0.15	1720.92	1.1	1719.25	2.3	1715.08	0.41	1718.82	0.69	1715.11	4.4	1721.81	0.48	1723.14	3.7	1717.36	1.2	1715.56	8.5	1714.47
03/04/21	0.18	1720.79	1.1	1719.05	2.3	1713.74	0.43	1718.52	0.68	1715.10	4.4	1721.75	0.45	1723.14	3.7	1717.34	1.2	1715.54	8.5	1714.36
03/05/21	0.18	1720.80	1.1	1718.50	2.4	1711.73	0.49	1717.80	0.71	1714.59	4.4	1721.77	0.43	1723.16	3.7	1717.32	1.2	1715.57	8.5	1714.50
03/06/21	0.18	1720.81	1.1	1718.35	2.3	1712.16	0.50	1717.59	0.72	1714.49	4.4	1721.79	0.52	1723.09	3.7	1717.28	1.3	1714.30	8.5	1714.44
03/07/21	0.18	1720.78	1.1	1718.27	1.9	1717.31	0.50	1717.52	0.70	1714.70	4.4	1721.74	0.65	1722.90	3.7	1717.24	1.5	1711.39	8.5	1714.32
03/08/21	0.18	1720.77	1.1	1718.29	1.8	1718.46	0.51	1717.49	0.70	1714.74	4.4	1721.72	0.64	1722.90	3.7	1717.21	1.5	1711.34	8.5	1714.27
03/09/21	0.18	1720.76	1.1	1718.32	1.9	1717.86	0.51	1717.38	0.68	1714.97	4.4	1721.71	0.64	1722.88	3.7	1717.19	1.5	1711.29	8.5	1714.24
03/10/21	0.16	1720.80	1.1	1718.70	2.0	1717.45	0.53	1717.14	0.67	1715.15	4.4	1721.75	0.55	1722.95	3.7	1717.25	1.4	1712.13	8.4	1714.46
03/11/21 <sup>2</sup>	0.15	1720.84	0.88	1719.52	2.2	1714.84	0.54	1716.70	0.55	1716.91	3.9	1721.08	0.45	1723.14	3.2	1717.80	1.3	1714.17	7.5	1715.99
03/12/21 <sup>2</sup>	0.18	1720.78	0.75	1719.86	2.3	1716.14	0.56	1716.47	0.60	1716.22	4.0	1722.20	0.54	1723.12	3.3	1717.83	1.3	1714.47	7.7	1716.35
03/13/21 <sup>2</sup>	0.18	1720.77	0.68	1719.98	2.5	1714.36	0.59	1716.21	0.69	1714.99	4.3	1722.02	0.67	1722.98	3.6	1717.45	1.4	1713.55	8.4	1715.38
03/14/21	0.17	1720.76	0.70	1719.90	2.4	1712.31	0.60	1715.98	0.67	1715.27	4.4	1721.91	0.72	1722.89	3.7	1717.25	1.5	1712.69	8.5	1714.84
03/15/21	0.18	1720.74	0.70	1719.91	2.4	1711.70	0.60	1716.05	0.66	1715.40	4.4	1721.90	0.77	1722.88	3.7	1717.20	1.5	1712.79	8.5	1714.75
03/16/21 <sup>2</sup>	0.15	1720.77	0.52	1720.46	2.1	1716.69	0.55	1716.63	0.58	1716.59	4.1	1722.04	0.71	1722.92	3.5	1717.49	1.4	1714.37	8.0	1715.60
03/17/21 <sup>3</sup>	0.15	1720.77	0.59	1720.63	1.8	1719.86	0.51	1716.93	0.46	1718.04	3.7	1722.25	0.66	1723.03	3.2	1717.86	1.2	1715.43	7.3	1716.51
03/18/21	0.27	1720.32	1.2	1718.79	2.1	1719.84	0.60	1715.95	0.78	1713.44	4.4	1721.97	0.74	1722.94	3.7	1717.26	1.5	1713.43	8.5	1715.18
03/19/21	0.21	1720.48	1.1	1718.79	2.0	1719.38	0.61	1715.74	0.76	1713.81	4.4	1721.93	0.70	1722.95	3.7	1717.23	1.4	1713.33	8.5	1714.99
03/20/21	0.19	1720.55	1.1	1718.97	2.0	1718.95	0.62	1715.43	0.74	1713.97	4.4	1721.89	0.71	1722.95	3.7	1717.14	1.5	1712.93	8.5	1714.71
03/21/21	0.17	1720.57	1.1	1718.87	2.2	1715.85	0.61	1715.54	0.76	1713.72	4.4	1721.88	0.69	1722.95	3.7	1717.16	1.4	1712.56	8.4	1714.77
03/22/21 <sup>2</sup>	0.23	1720.34	1.1	1719.08	2.2	1713.99	0.61	1715.38	0.77	1713.47	4.4	1721.88	0.69	1722.96	3.7	1717.13	1.4	1712.30	8.5	1714.77
03/23/21 <sup>2</sup>	0.15	1720.62	0.89	1719.53	2.0	1716.29	0.55	1716.35	0.69	1714.69	3.9	1722.19	0.52	1723.17	3.3	1717.60	1.3	1713.98	7.6	1716.15
03/24/21 <sup>3</sup>	0.19	1720.52	0.89	1720.79	2.2	1717.20	0.59	1715.96	0.77	1713.64	4.3	1722.13	0.61	1723.16	3.6	1717.41	1.4	1713.78	8.2	1715.76
03/25/21	0.21	1720.44	0.94	1719.85	2.2	1715.25	0.62	1715.43	0.82	1712.90	4.4	1722.01	0.68	1723.08	3.7	1717.14	1.5	1712.28	8.5	1715.02
03/26/21	0.16	1720.53	0.93	1719.88	2.1	1715.68	0.64	1714.80	0.82	1712.76	4.4	1721.92	0.64	1723.02	3.7	1717.14	1.4	1712.57	8.4	1714.94
03/27/21	0.16	1720.55	1.2	1719.54	2.1	1715.26	0.65	1714.50	0.84	1712.18	4.4	1721.75	0.64	1722.90	3.7	1717.03	1.4	1711.53	8.5	1714.61
03/28/21 <sup>2</sup>	0.24	1720.23	1.1	1720.56	2.0	1716.02	0.63	1714.75	0.83	1712.26	4.3	1721.81	0.59	1722.98	3.6	1717.12	1.4	1712.42	8.4	1714.98
03/29/21 <sup>2</sup>	0.20	1720.40	1.1	1720.23	1.9	1718.10	0.58	1715.68	0.79	1713.36	4.0	1722.20	0.51	1723.22	3.4	1717.58	1.3	1714.14	7.8	1716.36
03/30/21 <sup>2</sup>	0.24	1720.25	1.2	1718.36	2.0	1718.16	0.65	1714.55	0.85	1712.20	4.3	1722.09	0.60	1723.15	3.6	1717.31	1.4	1712.96	8.4	1715.65
03/31/21	0.20	1720.37	1.2	1718.76	2.0	1717.22	0.67	1713.93	0.83	1712.45	4.4	1721.93	0.77	1722.90	3.7	1717.12	1.4	1712.24	8.5	1715.08
Monthly Average	0.19	1720.63	0.99	1719.33	2.1	1716.06	0.56	1716.42	0.71	1714.44	4.3	1721.92	0.61	1723.02	3.6	1717.33	1.4	1713.43	8.3	1715.04
Analytical <sup>4</sup>	Conc (mg/L)	Date	Conc (mg/L)	Date	Conc (mg/L)	Date	Conc (mg/L)	Date	Conc (mg/L)	Date	Conc (mg/L)	Date	Conc (mg/L)	Date	Conc (mg/L)	Date	Conc (mg/L)	Date	Conc (mg/L)	Date
Perchlorate	610	3/10/2021	500	3/11/2011	320	3/11/2011	840	3/10/2021	900	3/10/2021	570	3/11/2021	620	3/10/2021	630	3/10/2021	270	3/11/2021	290	3/11/2021
Hexavalent Chromium	16	3/10/2021	0.94	3/11/2011	1.6	3/11/2011	17	3/10/2021	17	3/10/2021	8.5	3/11/2021	13	3/10/2021	9.7	3/10/2021	1.3	3/11/2021	7.0	3/11/2021
Total Chromium	14	3/10/2021	1.0	3/11/2011	1.8	3/11/2011	15	3/10/2021	15	3/10/2021	8.0	3/11/2021	12	3/10/2021	8.8	3/10/2021	1.3	3/11/2021	7.1	3/11/2021

Notes:  
 Flow reported as gpm is a daily average calculated from the totalizer reading.  
 1: Analytical results are reported from Eurofins TestAmerica.  
 2: On 03/11, 03/12, 03/13, 03/16, 03/17, 03/21, 03/22, 03/23, 03/24, 3/28, 3/29, and 3/30 IWF offline intermittently due to maintenance at GWTP.  
 3: On 03/11, I-G, I-N, I-O, I-Q, and I-W adjusted to meet target as directed by the Trust.  
 5: On 03/23, I-O and I-Q adjusted to meet target as directed by the Trust.  
 7: On 03/23, I-Q, I-R, and I-U adjusted to meet target as directed by the Trust.  
 8: On 03/23, I-R adjusted to meet target as directed by the Trust.  
 9: On 03/06, I-S, I-W, and I-Y adjusted to meet flow target as directed by the Trust.  
 10: On 03/09, I-S adjusted to meet flow target as directed by the Trust.

Table 4 - Treatment Plant Operational Metrics

Nevada Environmental Response Trust   Groundwater Extraction and Treatment System   Enhanced Operational Metrics																
Date	LS #2	GWTP Effluent <sup>1</sup>				GW-11 Influent <sup>1</sup>				FBR Plant Influent <sup>1</sup>						
	Flow (gpm)	Flow (gpm)	TA - Cr (TR) (mg/L)	TA - Cr (VI) (mg/L)	TA - ClO <sub>4</sub> (mg/L)	Flow <sup>4</sup> (gpm)	TA - Cr (TR) (mg/L)	TA - Cr (VI) (mg/L)	TA - ClO <sub>4</sub> (mg/L)	Flow (gpm)	TA - ClO <sub>4</sub> (mg/L)	ETI - ClO <sub>4</sub> (mg/L)	TA - ClO <sub>3</sub> (mg/L)	TA - NO <sub>3</sub> - N (mg/L)	TA - Cr (TR) (mg/L)	TA - Cr (VI) (mg/L)
03/01/21 <sup>3</sup>	893	62				0.05				958		5				
03/02/21 <sup>3</sup>	944	62				0.04				1,014		0	120	8.8	0.010	0.010
03/03/21	944	43				0.25				1,023		0				
03/04/21	940	61	0.083	ND	430	0.02				1,014		0				
03/05/21	941	63				0.02				1,005		0				
03/06/21	943	63				0.01				1,011	58	0				
03/07/21	943	63				0.01				1,008		0				
03/08/21	954	54				8.3	0.055	0.053	35	1,014		0		8.4	0.023	0.024
03/09/21	945	63				0.00				1,007		0				
03/10/21	944	63	0.087	ND	430	0.04				1,007		0				
03/11/21	941	56				0.04				1,017		0				
03/12/21	941	56				0.06				1,009		0				
03/13/21	944	61				0.03				1,005	53	0				
03/14/21	944	60				0.03				1,004		0				
03/15/21	942	60				0.02				1,018		0		7.8	0.023	0.023
03/16/21	952	56				0.04				1,017		0				
03/17/21	947	55				0.02				1,015		0				
03/18/21	945	62	0.11	ND	430	0.01				1,022		0				
03/19/21	949	62				0.01				1,032		0				
03/20/21	945	63				0.00				1,010		0				
03/21/21	945	62				0.00				1,007	55	1				
03/22/21	945	62				0.02				1,016		4		7.7	0.016	0.018
03/23/21	945	55				0.00				1,031		6				
03/24/21	953	60	0.12	ND	440	0.01				1,027		0				
03/25/21	943	63				0.00				1,014		0				
03/26/21	945	62				0.01				1,008		0				
03/27/21	945	63				0.01				1,027	56	0				
03/28/21	945	62				0.01				1,012		0				
03/29/21 <sup>3</sup>	942	53				0.00				1,000		0		4.0	0.041	0.049
03/30/21	942	39				0.42				999		0				
03/31/21	951	73	0.11	ND	440	0.01				1,024		0.0				
Monthly Average <sup>2</sup>	943	59	0.07	ND	253	0.31	0.055	0.053	35	1,012	56	0.5	120	7.1	0.024	0.026

Notes:  
 Flow reported as gpm is a daily average calculated from the totalizer reading. The only exceptions are the instantaneous flow readings recorded for the 1st and 2nd Stage FBR flows.  
 ND = Not detected above laboratory method detection limit (ClO<sub>4</sub> = 0.5 ug/L; ClO<sub>3</sub> = 10 ug/L; NO<sub>3</sub>-N = 0.055 mg/L, Cr(VI) = 0.25 ug/L).  
 B = Compound was found in the blank and sample.  
 1: ETI = Envirogen internal process control data, TA = Eurofins TestAmerica data.  
 2: All average concentrations reported are monthly flow weighted averages.  
 3: On 03/01, 03/02, and 3/29 Treatment Plant offline briefly due to maintenance.

Table 4 - Treatment Plant Operational Metrics

Nevada Environmental Response Trust   Groundwater Extraction and Treatment System   Enhanced Operational Metrics														
Date	1st Stage FBR <sup>4</sup>			2nd Stage FBR <sup>4</sup>			FBR Plant Effluent							
	Flow (gpm)	pH (s.u.)	ORP (mV)	Flow (gpm)	pH (s.u.)	ORP (mV)	Flow <sup>5</sup> (gpm)	TA - ClO <sub>2</sub> (mg/L)	ETI - ClO <sub>2</sub> (mg/L)	TA - ClO <sub>2</sub> (mg/L)	TA - Cr (TR) (mg/L)	TA - Cr (VI) (mg/L)	TA - NO <sub>3</sub> - N (mg/L)	ETI - Turbidity (NTU)
03/01/21 <sup>3</sup>	1,025	6.6	-352	937	6.6	-381	731		0.00					27
03/02/21 <sup>3</sup>	1,079	6.6	-357	905	6.6	-370	980		0.00	0.069	0.0025 J	ND	ND	21
03/03/21	1,041	6.7	-362	924	6.7	-379	985		9.0					66
03/04/21	1,039	6.7	-383	759	6.7	-365	1,056		0.00					25
03/05/21	1,062	6.7	-394	916	6.7	-372	1,038		0.00					25
03/06/21	1,064	6.7	-401	856	6.7	-383	1,052	ND	0.00					33
03/07/21	1,046	6.7	-409	922	6.7	-391	1,049		0.00					19
03/08/21	1,046	6.7	-398	922	6.7	-397	999		0.00		0.0067 J	ND	ND	35
03/09/21	1,046	6.7	-400	922	6.7	-401	996		0.00					25
03/10/21	1,046	6.7	-416	922	6.7	-405	1,042		0.00					35
03/11/21	1,046	6.8	-398	922	6.8	-387	1,048		0.00					44
03/12/21	1,046	6.7	-401	922	6.7	-391	1,042		0.00					29
03/13/21	1,046	6.6	-407	922	6.7	-401	1,044	ND	0.00					27
03/14/21	1,046	6.7	-384	922	6.7	-404	1,050		0.00					33
03/15/21	1,046	6.7	-382	922	6.7	-408	1,058		0.00		ND	ND	ND	19
03/16/21	1,046	6.6	-395	922	6.7	-410	1,034		0.00					28
03/17/21	1,046	6.6	-395	922	6.7	-413	1,049		0.00					17
03/18/21	1,046	6.6	-306	922	6.6	-381	1,077		0.00					20
03/19/21	1,046	6.6	-313	922	6.7	-373	1,053		0.00					20
03/20/21	1,046	6.6	-292	922	6.7	-378	1,053	ND	0.00					18
03/21/21	1,046	6.7	-327	922	6.7	-380	1,024		0.00					21
03/22/21	1,046	6.7	-348	922	6.7	-388	1,061		0.00		ND	ND	ND	17
03/23/21	1,046	6.7	-418	922	6.8	-392	1,082		0.00					25
03/24/21	1,046	6.7	-391	922	6.7	-389	1,075		0.00					20
03/25/21	1,046	6.7	-237	922	6.7	-374	1,057		0.00					19
03/26/21	1,046	6.7	-417	922	6.7	-385	1,057		0.00					20
03/27/21	1,046	6.7	-427	922	6.7	-392	1,057	ND	0.00					24
03/28/21	1,046	6.7	-435	922	6.7	-392	1,048		0.00					25
03/29/21 <sup>3</sup>	1,046	6.5	-324	922	6.7	-386	1,032		0.00		ND	ND	ND	33
03/30/21	1,046	6.6	-343	922	6.7	-358	1,014		0.00					40
03/31/21	1,046	6.4	-344	922	6.5	-347	1,053		0.00					20
Monthly Average <sup>4</sup>	1,047	6.7	-373	914	6.7	-386	1,032	ND	ND	0.069	0.0018	ND	ND	27

Notes:  
 Flow reported as gpm is a daily average calculated from the totalizer reading. The only exceptions are the instantaneous flow readings recorded for the 1st and 2nd Stage FBR flows.  
 ND = Not detected above laboratory method detection limit (ClO<sub>2</sub> = 0.5 ug/L; ClO<sub>3</sub> = 10 ug/L; NO<sub>3</sub>-N = 0.055 mg/L, Cr(VI) = 0.25 ug/L).  
 J = Result is less than the reporting limit but greater than or equal to the method detection limit and the concentration is an approximate value.  
 1: ETI = Envirogen internal process control data, TA = Eurofins TestAmerica data.  
 3: On 03/01, 03/02, and 3/29 Treatment Plant offline briefly due to maintenance.  
 4: For 1st and 2nd stage FBRs, flow measurements are collected from the influent lines and pH and ORP samples are collected from the recycle lines  
 5: FBR Plant Effluent represents effluent discharged to Las Vegas Wash. While this may represent the entirety of the FBR Plant effluent, any diversions to GW-11 are subtracted from the original effluent flow.

GW-11 Level Monitoring <sup>1</sup>		
Date	Field Measurement (ft)	Volume (MG)
03/15/21	31.4	34.8
03/31/21	31.7	34.4

GW-11 Leak Detection Monitoring				
Date	Amount Pumped <sup>2</sup> (gallons)			
	NW Corner	NE Corner	SW Corner	SE Corner
03/10/21	0	0	606	0
03/24/21	0	0	566	0

GW-11 Composite Sample <sup>3</sup>		
Analytes	Concentration	Units
Perchlorate	5.7	mg/L
Chlorate	5.0	mg/L
Ammonia as N	0.069	mg/L
Total Phosphorus	0.57	mg/L
Total Dissolved Solids (TDS)	12,000	mg/L
Total Suspended Solids (TSS)	60	mg/L
pH	8.8 HF	s.u.
Calcium	550	mg/L
Iron	1.0	mg/L
Chromium (total)	0.022	mg/L
Chromium VI	ND	mg/L
Chloride	4,000	mg/L
Nitrate as N	ND	mg/L
Sulfate	3,500	mg/L

Notes:

HF = Field parameter with a holding time of 15 minutes. Test performed by laboratory at client's request.

J = Result is less than the reporting limit but greater than or equal to the method detection limit and the concentration is an approximate value.

ND = Not detected above laboratory method detection limit (NH<sub>3</sub>-N= 0.1 mg/L; Total P = 0.025 ug/L; Cr(VI) = 0.25 ug/L).

1: A transducer installed along the eastern berm provides water pressure measurements that are correlated to elevations for calculation of water depths. Results from a December 2018 bathymetric survey of the pond will be used to identify adjustment to the procedure, if necessary.

2: Pumping occurs over three consecutive days. The total amount pumped over the three day period is listed with the last day pumping occurred.

3: GW-11 Corner Composite Sample is collected quarterly, most recent sampling results are presented. Sampled on: November 12, 2020.



Nevada Environmental Response Trust   Groundwater Extraction and Treatment System   Enhanced Operational Metrics						
Date	Flow <sup>1</sup> (gpm)	FBR Influent Concentration			Influent Function Load <sup>3</sup> (lbs/day)	6 Month Rolling Average (lbs/day)
		ClO <sub>4</sub> <sup>2</sup> (mg/L)	NO <sub>3</sub> as N (mg/L)	ClO <sub>3</sub> (mg/L)		
Apr 2020	1,078	77	11	100	525	658
May 2020	1,065	86	11	120	582	598
June 2020	1,019	98	12	120	592	548
July 2020	1,035	66	11	91	458	536
Aug 2020	1,040	59	8.7	100	444	526
Sep 2020	1,038	59	9	120	492	516
Oct 2020	1,029	64	9	94	441	501
Nov 2020	1,037	56	10	100	451	480
Dec 2020	1,027	59	9	130	507	465
Jan 2021	1,047	54	9	110	454	465
Feb 2021	1,023	61	8	110	457	467
March 2021	1,012	56	7	120	447	460

## Notes:

Concentrations and flow are presented as monthly average.

1: Flow used in loading calculation is average monthly FBR influent flow.

2: The AP-5 wash water feed rate was increased on October 1, 2019 in accordance with the higher seasonal ammonia permit limits beginning October 1. The AP-5 wash water feed rate was decreased in March 2020 to prepare for the lower seasonal ammonia permit limits beginning April 1. AP-5 sediment mixing and solids washing activities were completed on January 4, 2020. AP-5 tank processing was completed on 7/15/20.

3: FBR loading calculated as  $[(0.9 \cdot \text{NO}_3 \text{ as N} + 0.17 \cdot \text{ClO}_3 + 0.18 \cdot \text{ClO}_4) \cdot \text{Flow} \cdot 1440 / 1000000 \cdot 8.34]$ .

Nevada Environmental Response Trust   Groundwater Extraction and Treatment System   Enhanced Operational Metrics																
Date	E1-1		E1-2		E1-3		E2-1		E2-2		E2-3		E2-4		E2-5	
	Flow <sup>3</sup> (gpm)	Water Elevation (ft amsl)	Flow (gpm)	Water Elevation (ft amsl)	Flow (gpm)	Water Elevation (ft amsl)	Flow (gpm)	Water Elevation (ft amsl)	Flow (gpm)	Water Elevation (ft amsl)	Flow (gpm)	Water Elevation (ft amsl)	Flow (gpm)	Water Elevation (ft amsl)	Flow (gpm)	Water Elevation (ft amsl)
03/01/21	2.4	1710.61	0.88	1709.84	0.66	1710.60	0.90	1718.47	1.1	1717.27	1.0	1718.86	1.5	1713.85	0.30	1718.25
03/02/21	2.4	1710.59	0.88	1709.24	0.64	1709.92	1.0	1714.67	1.1	1715.41	1.3	1713.25	1.5	1713.16	0.39	1713.24
03/03/21	2.4	1710.05	0.89	1709.76	0.63	1710.50	1.0	1715.87	1.1	1716.12	1.3	1716.02	1.5	1713.78	0.38	1714.94
03/04/21	2.4	1710.18	0.90	1709.81	0.63	1710.45	1.0	1715.02	1.1	1716.26	1.3	1714.50	1.5	1713.61	0.34	1716.47
03/05/21	2.4	1713.78	0.90	1709.46	0.69	1710.42	1.1	1715.77	1.1	1716.59	1.3	1715.86	1.5	1713.08	0.35	1716.09
03/06/21	2.5	1712.97	0.90	1709.86	0.69	1710.62	0.70	1715.12	0.64	1716.43	1.3	1714.61	1.5	1713.24	0.35	1715.80
03/07/21	2.4	1713.78	0.89	1713.86	0.68	1710.60	1.6	1713.60	1.7	1715.79	1.3	1713.26	1.5	1713.82	0.36	1715.16
03/08/21	2.4	1713.02	0.89	1709.91	0.68	1710.36	1.1	1714.38	1.1	1716.00	1.3	1714.07	1.5	1713.76	0.35	1715.52
03/09/21	2.4	1713.68	0.90	1709.71	0.68	1710.51	0.93	1715.12	1.1	1715.44	1.4	1714.95	1.5	1713.60	0.32	1717.62
03/10/21	2.4	1714.22	0.90	1709.71	0.61	1710.51	0.91	1714.97	1.0	1716.53	1.3	1714.75	1.5	1713.71	0.29	1717.12
03/11/21 <sup>2</sup>	2.4	1712.43	0.88	1709.86	0.74	1710.07	0.90	1715.17	1.0	1716.02	1.3	1716.05	1.5	1713.56	0.30	1717.20
03/12/21 <sup>2</sup>	2.2	1715.51	0.88	1709.66	0.65	1710.60	0.70	1717.04	0.87	1718.97	0.79	1722.35	1.4	1713.60	0.16	1722.14
03/13/21	2.1	1711.32	0.88	1709.74	0.64	1710.47	0.77	1715.05	1.4	1713.83	1.5	1714.53	1.5	1714.02	0.50	1717.93
03/14/21	2.3	1711.72	0.86	1709.94	0.63	1711.51	0.59	1715.60	1.3	1713.11	1.3	1714.85	1.4	1713.94	0.44	1717.37
03/15/21	2.5	1714.35	0.9	1709.86	0.66	1710.57	0.67	1718.24	1.4	1710.82	1.4	1713.44	1.5	1713.80	0.48	1709.91
03/16/21	2.2	1717.35	0.81	1711.64	0.61	1710.44	0.80	1715.37	0.76	1721.24	1.3	1717.61	1.3	1713.90	0.41	1714.91
03/17/21 <sup>2</sup>	2.6	1711.48	0.91	1709.82	0.64	1709.81	0.86	1709.06	1.4	1707.70	1.5	1708.04	1.5	1713.71	0.47	1709.84
03/18/21	2.3	1712.18	0.83	1709.71	0.65	1710.53	0.73	1713.23	0.58	1721.12	0.36	1723.40	1.4	1713.69	0.18	1718.82
03/19/21	2.6	1711.75	0.90	1709.77	0.69	1709.94	0.78	1715.77	0.92	1717.54	0.86	1718.05	1.6	1713.41	0.28	1717.79
03/20/21	2.6	1712.12	0.90	1710.54	0.71	1709.87	0.00	1715.67	0.84	1717.37	0.00	1717.97	1.6	1713.99	0.28	1717.61
03/21/21 <sup>2</sup>	2.6	1711.86	0.91	1710.25	0.72	1710.77	0.56	1715.15	0.83	1717.62	0.63	1718.05	1.6	1714.39	0.24	1717.23
03/22/21 <sup>2</sup>	2.4	1712.13	0.82	1709.81	0.66	1710.31	1.0	1716.04	0.74	1721.17	0.57	1722.87	1.5	1713.61	0.17	1720.22
03/23/21 <sup>2</sup>	2.6	1710.58	0.91	1709.86	0.69	1710.59	0.78	1715.80	0.95	1735.73	0.67	1718.62	1.1	1735.73	0.27	1721.12
03/24/21	2.1	1710.88	0.76	1709.65	0.57	1710.40	0.69	1715.34	0.85	1718.62	0.59	1722.25	0.96	1713.53	0.24	1721.62
03/25/21	2.6	1710.95	0.91	1710.98	0.67	1709.72	0.83	1716.22	1.1	1718.01	1.1	1718.27	0.00	1713.13	0.10	1720.14
03/26/21	2.6	1709.81	0.89	1709.81	0.67	1710.01	0.84	1713.99	1.1	1716.77	1.2	1718.59	1.5	1721.11	0.53	1709.20
03/27/21	2.5	1709.92	0.90	1710.54	0.66	1710.27	0.82	1714.61	1.1	1716.70	1.3	1715.17	1.4	1715.30	0.40	1715.51
03/28/21	2.6	1710.43	0.90	1710.36	0.66	1710.10	0.84	1714.15	1.1	1716.45	1.4	1715.55	1.4	1716.86	0.39	1714.77
03/29/21	2.5	1710.25	0.89	1709.81	0.65	1710.42	0.80	1713.64	1.1	1716.52	1.3	1715.67	1.4	1713.31	0.39	1714.68
03/30/21	2.4	1711.80	0.90	1709.64	0.67	1709.87	0.82	1711.72	1.2	1715.27	1.1	1715.07	1.4	1713.67	0.34	1715.74
03/31/21	2.5	1711.18	0.92	1709.86	0.63	1710.37	0.74	1716.11	1.3	1715.77	0.99	1718.85	1.4	1713.51	0.34	1716.20
Monthly Average	2.4	1712.03	0.88	1710.08	0.66	1710.36	0.83	1715.03	1.1	1717.04	1.1	1716.63	1.4	1714.76	0.33	1716.45
Analytical <sup>1</sup>	Conc (mg/L)	Date	Conc <sup>2</sup> (mg/L)	Date	Conc (mg/L)	Date	Conc (mg/L)	Date	Conc (mg/L)	Date	Conc (mg/L)	Date	Conc (mg/L)	Date	Conc (mg/L)	Date
Perchlorate	530	3/8/2021	1,100	3/8/2021	420	3/8/2021	90	3/8/2021	380	3/8/2021	850	3/8/2021	890	3/8/2021	1,100	3/8/2021
Hexavalent Chromium	0.067	3/8/2021	0.45	3/8/2021	0.66	3/8/2021	0.029	3/8/2021	0.027	3/8/2021	0.073	3/8/2021	0.071	3/8/2021	0.02	3/8/2021
Total Chromium	0.064	3/8/2021	0.43	3/8/2021	0.63	3/8/2021	0.041	3/8/2021	0.026	3/8/2021	0.072	3/8/2021	0.074	3/8/2021	0.02	3/8/2021

Notes:

Flow reported as gpm is a daily average calculated from the totalizer reading.

The flow rate at individual wells is adjusted daily to maintain the water level in the wells above the pump.

1: Analytical results are reported from Eurofins TestAmerica.

2: On 03/11, 03/12, 03/17, 03/21, 03/22, and 03/23, AP Area wells offline intermittently due to maintenance.

3: Flow meter installed for E1-1 provided faulty readings from 12/14/20 to 3/05/21; flow during this period assumed to equal 2.43 gpm based on historic flow rates and water levels.

4: Duplicates taken on 03/11 for well E1-2; average of both values is presented and used for calculations.

Figure 1 - GW-11 Pond Volume and FBR Influent Perchlorate Concentration

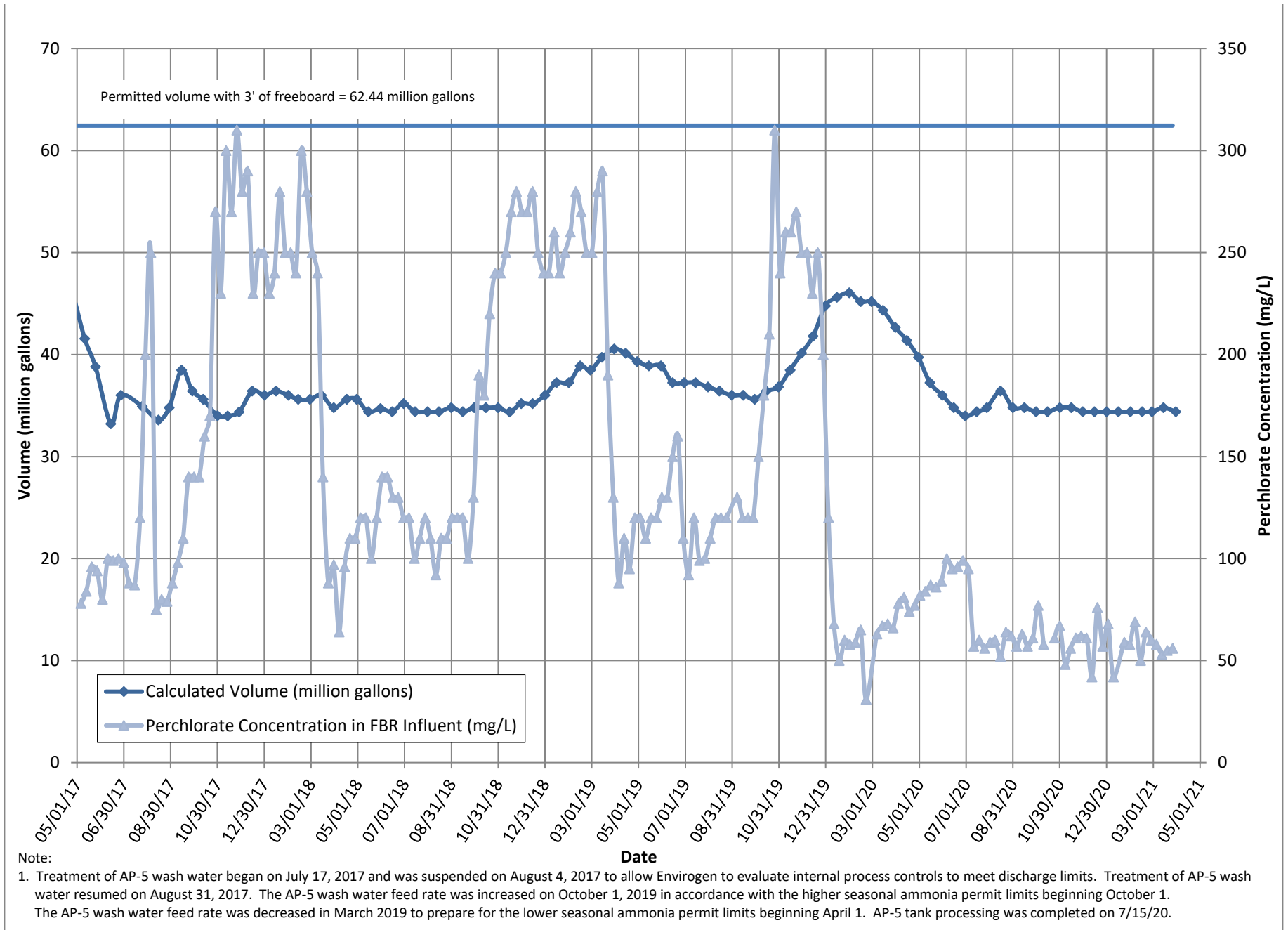


Figure 2 - FBR Equivalent Loading Calculation

