

Table 1 - Seep Well Field (SWF) Operational Metrics

Nevada Environmental Response Trust Groundwater Extraction and Treatment System Enhanced Operational Metrics																				
Date	LS #1	PC-116R (East Well)		PC-99R2/R3 (Center Well)		PC-115R (West Well)		PC-117		PC-118		PC-119		PC-120		PC-121		PC-133		
	Flow (gpm)	Flow (gpm)	Water Elevation (ft amsl)	Flow (gpm)	Water Elevation (ft amsl)	Flow (gpm)	Water Elevation (ft amsl)	Flow* (gpm)	Water Elevation (ft amsl)	Flow (gpm)	Water Elevation (ft amsl)	Flow (gpm)	Water Elevation (ft amsl)	Flow (gpm)	Water Elevation (ft amsl)	Flow (gpm)	Water Elevation (ft amsl)	Flow (gpm)	Water Elevation (ft amsl)	
02/01/19	593	158	1536.87	83	1539.94	121	1542.15	86	1538.10	74	1545.95	95	1547.68	48	1548.72	18	1549.83	9.6	1523.06	
02/02/19	642	171	1536.83	89	1539.95	134	1542.14	113	1538.06	80	1545.94	103	1547.68	51	1548.71	20	1549.82	11	1522.89	
02/03/19	643	169	1536.80	88	1540.40	132	1542.13	111	1538.04	79	1545.95	102	1547.67	51	1548.72	20	1549.82	9.8	1522.70	
02/04/19 ²	571	167	1536.79	93	1540.34	131	1542.13	110	1538.01	78	1545.96	101	1547.67	50	1548.71	19	1549.83	9.9	1522.61	
02/05/19	642	168	1536.77	88	1539.97	131	1542.10	111	1537.98	79	1545.93	101	1547.65	50	1548.69	19	1549.81	10	1522.47	
02/06/19	644	165	1536.72	86	1539.95	129	1542.06	109	1537.93	78	1545.90	100	1547.61	50	1548.66	19	1549.77	9.6	1522.30	
02/07/19	644	167	1536.71	88	1539.84	131	1542.05	110	1537.91	79	1545.88	101	1547.60	50	1548.65	19	1549.76	9.7	1522.35	
02/08/19	653	166	1536.71	86	1540.15	129	1542.08	110	1537.91	78	1545.90	100	1547.61	50	1548.65	19	1549.76	10	1522.32	
02/09/19	644	168	1536.69	88	1539.90	131	1542.07	111	1537.89	79	1545.89	101	1547.59	50	1548.63	20	1549.75	9.8	1522.32	
02/10/19	644	168	1536.66	87	1540.02	131	1542.03	112	1537.85	79	1545.87	101	1547.56	50	1548.61	20	1549.72	9.8	1522.23	
02/11/19 ²	579	167	1536.62	86	1540.21	130	1542.01	111	1537.82	79	1545.84	101	1547.54	50	1548.58	19	1549.70	10	1522.12	
02/12/19	643	167	1536.62	87	1540.00	130	1542.01	110	1537.81	78	1545.85	101	1547.54	50	1548.58	19	1549.69	9.7	1522.12	
02/13/19	652	167	1536.72	87	1538.64	130	1542.02	110	1537.87	78	1545.85	101	1547.53	50	1548.57	19	1549.68	10	1522.02	
02/14/19	643	169	1536.81	85	1539.20	132	1542.12	111	1537.96	79	1545.95	102	1547.63	50	1548.66	19	1549.76	9.8	1522.15	
02/15/19	642	165	1536.88	83	1539.10	128	1542.20	109	1538.00	77	1546.06	100	1547.75	49	1548.78	17	1549.88	9.6	1522.19	
02/16/19	643	167	1536.92	85	1539.53	130	1542.24	110	1538.02	78	1546.09	100	1547.78	50	1548.81	21	1549.92	9.7	1522.09	
02/17/19	643	170	1536.93	87	1539.39	133	1542.24	113	1538.01	80	1546.09	103	1547.78	52	1548.82	20	1549.93	11	1522.03	
02/18/19 ²	573	168	1536.92	88	1539.50	131	1542.23	111	1538.04	79	1546.09	101	1547.78	50	1548.86	19	1549.92	9.9	1522.04	
02/19/19	614	168	1536.90	86	1539.71	131	1542.21	111	1538.02	79	1546.08	101	1547.76	50	1548.85	20	1549.91	10	1521.98	
02/20/19	690	162	1536.99	83	1539.36	126	1542.24	107	1537.88	76	1546.11	98	1547.77	49	1548.86	18	1549.91	9.5	1522.71	
02/21/19	653	166	1536.98	87	1539.23	130	1542.26	110	1538.10	78	1546.13	101	1547.79	50	1548.88	19	1549.94	9.7	1522.60	
02/22/19	643	167	1536.94	87	1538.97	130	1542.24	110	1538.06	78	1546.11	101	1547.77	50	1548.87	19	1549.92	10	1522.77	
02/23/19	645	168	1536.93	87	1539.02	131	1542.22	111	1538.04	79	1546.10	101	1547.76	50	1548.85	20	1549.91	9.8	1522.36	
02/24/19	645	169	1536.91	87	1539.35	132	1542.21	112	1538.03	79	1546.10	101	1547.75	50	1548.84	20	1549.90	9.8	1522.35	
02/25/19 ²	643	168	1536.88	86	1539.49	131	1542.19	111	1538.01	79	1546.07	101	1547.72	50	1548.81	20	1549.87	10	1522.32	
02/26/19	641	167	1536.85	86	1539.62	130	1542.16	110	1537.97	78	1546.05	101	1547.69	50	1548.79	19	1549.84	10	1522.19	
02/27/19	653	167	1536.81	87	1539.39	131	1542.13	110	1537.94	79	1546.03	101	1547.66	50	1548.76	19	1549.81	9.7	1522.19	
02/28/19	643	165	1536.78	86	1538.97	129	1542.10	109	1537.92	78	1546.00	99	1547.64	50	1548.73	19	1549.79	9.6	1522.11	
Monthly Average	636	167	1536.82	87	1539.61	130	1542.14	110	1537.97	78	1545.99	101	1547.68	50	1548.74	19	1549.83	10	1522.34	
Analytical	Conc ¹ (mg/L)	Date	Conc (mg/L)	Date	Conc (mg/L)	Date	Conc (mg/L)	Date	Conc (mg/L)	Date	Conc (mg/L)	Date	Conc (mg/L)	Date	Conc (mg/L)	Date	Conc (mg/L)	Date	Conc (mg/L)	Date
Perchlorate	16	2/18/2019	14	2/18/2019	7.3	2/18/2019	8.5	2/18/2019	3.7	2/18/2019	0.64	2/18/2019	0.024	2/18/2019	0.029	2/18/2019	0.67	2/18/2019		
Hexavalent Chromium	0.0033	2/18/2019	ND	2/18/2019	ND	2/18/2019	0.0041	2/18/2019	ND	2/18/2019	ND	2/18/2019	ND	2/18/2019	ND	2/18/2019	ND	2/18/2019	ND	2/18/2019
Total Chromium	0.0030 J	2/18/2019	ND	2/18/2019	ND	2/18/2019	0.0037 J	2/18/2019	ND	2/18/2019	ND	2/18/2019	ND	2/18/2019	ND	2/18/2019	ND	2/18/2019	ND	2/18/2019

Notes:
 Flow reported as gpm is a daily average calculated from the totalizer reading.
 ND = Not detected above laboratory method detection limit (Cr(TR)=2.5 ug/L, Cr(VI) =0.20 ug/L).
 J = Result is less than the reporting limit but greater than or equal to the method detection limit and the concentration is an approximate value.
 1: Analytical results are reported from TestAmerica.
 2: On 02/04, 02/11, 02/18, and 02/25, the LS #1 and SWF totalizers were reset. Instantaneous flow rate at the time of the water level measurement was used for these dates.
 3: Duplicates taken on 02/18 for well PC-116R; average of both values is presented and used for calculations.
 4: On 02/01, PC-117 offline briefly for motor replacement.

Table 2 - Athens Well Field (AWF) Operational Metrics

Nevada Environmental Response Trust Groundwater Extraction and Treatment System Enhanced Operational Metrics																	
Date	LS #3 Flow (gpm)	ART-1/1A		ART-2/2A		ART-3/3A		ART-4/4A		ART-9		ART-7A/7B		ART-8/8A		PC-150	
		Flow (gpm)	Water Elevation (ft amsl)	Flow (gpm)	Water Elevation (ft amsl)	Flow (gpm)	Water Elevation (ft amsl)	Flow (gpm)	Water Elevation (ft amsl)	Flow ³ (gpm)	Water Elevation (ft amsl)	Flow (gpm)	Water Elevation (ft amsl)	Flow (gpm)	Water Elevation (ft amsl)	Flow ⁵ (gpm)	Water Elevation (ft amsl)
02/01/19	382	38	1583.11	143	1581.83	18	1583.48	2.3	1579.21	58	1576.58	17	1583.95	170	1582.70	1.5	1576.31
02/02/19	398	39	1583.08	151	1581.80	19	1583.45	2.7	1579.22	61	1576.52	18	1583.97	179	1582.66	1.5	1576.30
02/03/19	398	39	1583.05	152	1581.77	18	1583.44	2.8	1579.21	60	1576.52	18	1583.92	178	1582.64	1.5	1576.30
02/04/19 ²	491	38	1583.04	150	1581.76	22	1583.43	2.7	1579.21	58	1576.45	17	1583.90	179	1582.63	1.5	1576.30
02/05/19	398	38	1583.03	151	1581.76	18	1583.42	2.8	1579.21	59	1576.45	17	1583.91	178	1582.63	1.5	1576.30
02/06/19	398	39	1583.03	151	1581.75	19	1583.42	2.8	1579.21	59	1576.42	18	1583.91	178	1582.63	1.5	1576.30
02/07/19	397	38	1583.03	151	1581.75	18	1583.42	2.1	1579.21	60	1576.40	18	1583.91	178	1582.63	1.5	1576.29
02/08/19	397	38	1583.03	151	1581.75	18	1583.42	2.8	1579.21	59	1576.40	18	1583.91	177	1582.63	1.5	1576.29
02/09/19	397	38	1583.02	151	1581.75	18	1583.42	2.8	1579.21	59	1576.32	17	1583.91	177	1582.62	1.5	1576.29
02/10/19	396	38	1583.01	152	1581.74	18	1583.41	2.8	1579.21	59	1576.31	17	1583.89	177	1582.61	1.5	1576.29
02/11/19 ²	424	39	1583.00	148	1581.73	22	1583.41	2.6	1579.21	59	1576.31	17	1583.91	178	1582.61	1.5	1576.29
02/12/19	397	38	1583.00	151	1581.73	18	1583.41	2.8	1579.21	59	1576.31	18	1583.90	178	1582.61	1.5	1576.29
02/13/19	396	38	1582.99	151	1581.72	18	1583.40	2.8	1579.21	59	1576.30	17	1583.90	177	1582.61	1.5	1576.29
02/14/19	396	38	1582.98	151	1581.71	18	1583.39	2.1	1579.21	58	1576.24	18	1583.90	177	1582.59	1.5	1576.31
02/15/19	395	38	1583.03	150	1581.76	18	1583.43	2.7	1579.21	59	1576.30	18	1583.90	176	1582.64	1.5	1576.31
02/16/19	395	38	1583.05	151	1581.79	18	1583.45	2.8	1579.21	59	1576.30	17	1583.87	176	1582.66	1.5	1576.31
02/17/19	396	39	1583.05	151	1581.79	18	1583.45	2.8	1579.21	58	1576.24	18	1583.83	177	1582.66	1.5	1576.31
02/18/19 ²	409	38	1583.05	153	1581.79	21	1583.45	2.8	1579.21	58	1576.27	17	1583.90	181	1582.66	1.5	1576.31
02/19/19	380	38	1582.66	151	1581.66	18	1580.59	2.8	1579.22	59	1576.27	17	1583.86	178	1582.17	1.5	1576.30
02/20/19	413	38	1582.65	150	1581.88	18	1580.59	2.7	1579.22	58	1576.27	18	1583.87	179	1582.17	1.5	1576.30
02/21/19	397	37	1582.65	150	1581.88	18	1580.58	2.1	1579.22	58	1576.27	17	1583.86	179	1582.17	1.5	1576.30
02/22/19	395	38	1582.66	151	1581.89	18	1580.59	2.8	1579.21	58	1576.24	17	1583.83	178	1582.18	1.5	1576.30
02/23/19	396	38	1582.67	151	1581.90	18	1580.60	2.8	1579.21	59	1576.27	17	1583.87	179	1582.19	1.5	1576.30
02/24/19	396	38	1582.68	151	1581.90	18	1580.60	2.8	1579.22	58	1576.24	18	1583.84	179	1582.19	1.5	1576.30
02/25/19 ²	393	38	1582.68	151	1581.91	19	1580.61	2.8	1579.21	51	1576.27	18	1583.87	179	1582.19	1.5	1576.30
02/26/19	389	38	1582.67	151	1581.90	19	1580.60	2.8	1579.22	43	1576.99	18	1583.92	179	1582.19	1.5	1576.30
02/27/19	398	38	1582.67	150	1581.89	18	1580.60	2.8	1579.22	59	1576.63	17	1583.90	179	1582.19	1.5	1576.30
02/28/19	398	38	1582.67	150	1581.89	19	1580.60	2.1	1579.21	59	1576.49	18	1583.85	179	1582.19	1.5	1576.30
Monthly Average	401	38	1582.90	150	1581.80	19	1582.42	2.6	1579.21	58	1576.38	18	1583.89	178	1582.47	1.5	1576.30
Analytical	Conc (mg/L)	Date	Conc (mg/L)	Date	Conc (mg/L)	Date	Conc (mg/L)	Date	Conc ² (mg/L)	Date	Conc (mg/L)	Date	Conc (mg/L)	Date	Conc (mg/L)	Date	
Perchlorate	24	2/19/2019	13	2/19/2019	280	2/19/2019	140	2/19/2019	200	2/19/2019	110	2/19/2019	82	2/19/2019	47	2/19/2019	
Hexavalent Chromium	ND	2/19/2019	0.0069	2/19/2019	0.35	2/19/2019	0.16	2/19/2019	0.62	2/19/2019	0.51	2/19/2019	0.088	2/19/2019	0.035	2/19/2019	
Total Chromium	ND	2/19/2019	0.0067	2/19/2019	0.35	2/19/2019	0.16	2/19/2019	0.65	2/19/2019	0.49	2/19/2019	0.095	2/19/2019	0.039	2/19/2019	

Notes:
 Flow reported as gpm is a daily average calculated from the totalizer reading.
 ND = Not detected above laboratory method detection limit (ClO₂ = 0.5 ug/L; ClO₃ = 10 ug/L; NO₂-N= 0.055 mg/L, Cr(VI) = 0.25 ug/L).
 ART-1, 2, 3, 4, 7B, and 8 have adjacent recovery wells, both of which can be used for extraction. The pumping well can be chosen manually or automatically, based on operational considerations. The wells with transducers are ART-1, -2, -3, -4, -7A, -8, -9, and PC-150.
 1: Analytical results are reported from TestAmerica.
 2: On 02/04, 02/11, 02/18, and 02/25, the LS #3 and AWF totalizers were reset. Instantaneous flow rate at the time of the water level measurement was used for these dates.
 3: From 02/25 to 02/26, ART-9 offline intermittently due to instrument error.
 4: Duplicates taken on 02/19 for well ART-9; average of both values is presented and used for calculations.
 5: Conducted periodic bucket tests to confirm flow rates for PC-150. Average flow of 1.5 gpm determined from flow tests is presented for 02/01-02/28 flows and used for calculation purposes. Flow was steady throughout the month but the totalizer showed zero flow because totalizer units are 1,000 gallons.

Table 3 - Interceptor Well Field (IWF) Operational Metrics

Nevada Environmental Response Trust Groundwater Extraction and Treatment System Enhanced Operational Metrics																				
Date	I-AR		I-AA		I-AB		I-AC		I-AD		I-B		I-C		I-D		I-E		I-F	
	Flow (gpm)	Water Elevation (ft amsl)	Flow (gpm)	Water Elevation (ft amsl)	Flow (gpm)	Water Elevation (ft amsl)	Flow (gpm)	Water Elevation (ft amsl)	Flow (gpm)	Water Elevation (ft amsl)	Flow (gpm)	Water Elevation (ft amsl)	Flow (gpm)	Water Elevation (ft amsl)	Flow ^{5,6} (gpm)	Water Elevation (ft amsl)	Flow (gpm)	Water Elevation (ft amsl)	Flow (gpm)	Water Elevation (ft amsl)
02/01/19	0.21	1722.25	1.1	1707.10	0.00	1719.50	0.00	1723.77	0.00	1737.18	0.53	1709.38	3.4	1707.97	1.1	1713.87	1.2	1708.44	3.6	1708.76
02/02/19 ²	0.18	1724.42	0.89	1720.17	0.00	1719.68	0.00	1723.74	0.00	1737.18	0.45	1720.63	2.9	1707.88	0.87	1714.11	1.0	1719.71	3.1	1717.78
02/03/19 ²	0.17	1723.08	0.89	1707.14	0.00	1719.76	0.00	1723.82	0.00	1737.24	0.52	1709.39	2.6	1711.25	0.59	1718.06	1.0	1708.45	3.5	1714.78
02/04/19 ³	0.11	1722.87	0.99	1707.11	0.00	1719.79	0.00	1723.79	0.00	1737.31	0.70	1709.39	3.2	1707.48	0.72	1717.76	1.2	1708.53	4.3	1710.36
02/05/19	0.11	1722.79	1.1	1707.12	0.00	1719.81	0.00	1723.75	0.00	1737.27	0.59	1709.39	3.2	1707.65	0.74	1717.58	1.3	1708.59	4.3	1709.64
02/06/19	0.13	1722.79	1.1	1707.11	0.00	1719.67	0.00	1723.67	0.00	1737.16	0.57	1709.40	3.2	1708.52	0.94	1716.71	1.2	1708.66	4.2	1708.78
02/07/19	0.17	1722.80	1.1	1707.11	0.00	1719.63	0.00	1723.66	0.00	1737.12	0.54	1709.37	3.2	1708.42	1.1	1716.97	1.2	1708.63	4.1	1708.78
02/08/19	0.20	1722.73	1.1	1707.10	0.00	1719.64	0.00	1723.71	0.00	1737.28	0.54	1709.39	3.2	1707.94	1.0	1716.06	1.2	1708.62	4.0	1708.77
02/09/19	0.23	1722.70	1.1	1707.10	0.00	1719.63	0.00	1723.72	0.00	1737.20	0.54	1709.38	3.2	1708.05	0.97	1716.56	1.2	1708.53	3.9	1708.78
02/10/19	0.23	1722.99	1.1	1707.11	0.00	1719.63	0.00	1723.69	0.00	1737.21	0.53	1709.39	3.2	1708.18	0.95	1716.78	1.2	1708.45	3.9	1708.78
02/11/19 ³	0.21	1722.83	1.1	1707.11	0.00	1719.66	0.00	1723.64	0.00	1737.17	0.53	1709.37	3.2	1707.74	0.78	1717.38	1.3	1708.44	4.1	1708.77
02/12/19	0.23	1722.83	1.1	1707.11	0.00	1719.69	0.00	1723.68	0.00	1737.15	0.55	1709.38	3.3	1707.98	0.76	1716.76	1.2	1708.45	3.9	1708.78
02/13/19	0.23	1722.80	1.1	1707.11	0.00	1719.71	0.00	1723.71	0.00	1737.15	0.55	1709.39	3.3	1707.82	0.73	1717.19	1.2	1708.46	4.0	1708.77
02/14/19	0.23	1722.90	1.1	1707.11	0.00	1719.72	0.00	1723.72	0.00	1737.21	0.55	1709.41	3.3	1708.02	0.71	1716.77	1.2	1708.44	4.0	1708.78
02/15/19	0.23	1722.90	1.1	1707.11	0.00	1719.74	0.00	1723.70	0.00	1737.19	0.55	1709.38	3.3	1707.89	0.66	1716.84	1.2	1708.44	4.0	1708.77
02/16/19	0.23	1722.92	1.1	1707.11	0.00	1719.74	0.00	1723.67	0.00	1737.19	0.55	1709.37	3.3	1707.92	1.1	1716.83	1.2	1708.44	4.0	1708.77
02/17/19	0.23	1722.88	1.1	1707.11	0.00	1719.75	0.00	1723.67	0.00	1737.16	0.55	1709.38	3.3	1707.72	1.0	1716.68	1.2	1708.44	4.0	1708.79
02/18/19 ³	0.21	1722.78	1.1	1707.11	0.00	1719.75	0.00	1723.64	0.00	1737.10	0.63	1709.38	3.3	1707.79	1.0	1716.74	1.3	1708.44	4.2	1708.77
02/19/19	0.23	1722.79	1.1	1707.11	0.00	1719.76	0.02	1723.94	0.03	1737.10	0.55	1709.40	3.3	1707.84	1.0	1716.82	1.3	1708.45	4.0	1708.78
02/20/19	0.23	1722.80	1.1	1707.11	0.00	1719.79	0.00	1723.98	0.00	1737.07	0.55	1709.38	3.3	1707.74	1.1	1716.67	1.3	1708.45	4.1	1708.80
02/21/19	0.22	1722.79	1.1	1707.11	0.00	1719.79	0.00	1723.93	0.00	1737.04	0.55	1709.38	3.3	1707.73	1.0	1717.48	1.3	1708.44	4.1	1708.79
02/22/19	0.23	1722.74	1.1	1707.11	0.00	1719.78	0.00	1723.84	0.00	1736.72	0.55	1709.38	3.3	1707.81	1.0	1717.28	1.3	1708.44	4.1	1708.80
02/23/19	0.22	1722.77	1.1	1707.11	0.00	1719.83	0.00	1723.81	0.00	1736.66	0.56	1709.37	3.3	1707.98	1.0	1716.97	1.2	1708.45	4.1	1708.78
02/24/19	0.22	1722.76	1.1	1707.11	0.00	1719.87	0.00	1723.84	0.00	1736.78	0.57	1709.39	3.3	1707.72	1.0	1717.13	1.3	1708.45	4.1	1708.79
02/25/19 ³	0.22	1722.75	1.1	1707.11	0.02	1719.92	0.00	1723.85	0.00	1736.79	0.58	1709.37	3.3	1707.84	0.97	1718.29	1.3	1708.47	4.1	1708.80
02/26/19	0.23	1722.90	1.1	1707.15	0.00	1719.95	0.00	1723.85	0.00	1736.88	0.59	1709.38	3.3	1707.70	0.94	1718.66	1.3	1708.47	4.1	1708.79
02/27/19	0.22	1722.91	1.1	1707.16	0.00	1719.98	0.00	1723.86	0.00	1736.87	0.59	1709.38	3.3	1707.65	0.93	1717.98	1.3	1708.47	4.2	1708.80
02/28/19	0.23	1722.85	1.1	1707.17	0.00	1720.01	0.00	1723.86	0.00	1736.94	0.60	1709.39	3.4	1707.90	0.91	1718.40	1.3	1708.46	4.2	1708.80
Monthly Average	0.21	1722.87	1.1	1707.58	0.00	1719.76	0.00	1723.77	0.00	1737.08	0.56	1709.79	3.2	1708.00	0.91	1716.98	1.2	1708.88	4.0	1709.41
Analytical ¹	Conc (mg/L)	Date	Conc ⁴ (mg/L)	Date	Conc (mg/L)	Date	Conc (mg/L)	Date	Conc (mg/L)	Date	Conc (mg/L)	Date	Conc (mg/L)	Date	Conc (mg/L)	Date	Conc (mg/L)	Date	Conc (mg/L)	Date
Perchlorate	860	2/25/2019	52	2/25/2019	130	2/25/2019	250	2/19/2019	170	2/19/2019	340	2/25/2019	620	2/25/2019	460	2/25/2019	460	2/25/2019	670	2/20/2019
Hexavalent Chromium	0.42	2/25/2019	0.055	2/25/2019	0.011	2/25/2019	2.2	2/19/2019	1.4	2/19/2019	0.16	2/25/2019	2.6	2/25/2019	4.4	2/25/2019	6.0	2/25/2019	12	2/20/2019
Total Chromium	1.3	2/25/2019	0.064	2/25/2019	0.016	2/25/2019	2.2	2/19/2019	1.3	2/19/2019	0.17	2/25/2019	2.6	2/25/2019	4.6	2/25/2019	6.0	2/25/2019	13	2/20/2019

Notes:

- 1: Flow reported as gpm is a daily average calculated from the totalizer reading.
- 2: Analytical results are reported from TestAmerica.
- 3: On 02/02 and 02/03, IWF wells offline intermittently due to maintenance.
- 4: On 02/04, 02/11, 02/18, and 02/25, the IWF totalizers were reset. Instantaneous flow rate at the time of the water level measurement was used for these dates.
- 5: Duplicates taken on 02/25 for well I-AA; average of both values is presented and used for calculations.
- 6: On 02/06, I-D, I-L, I-M, I-N, I-P, I-R, I-U, and I-W adjusted to meet flow target as directed by the Trust.
- 7: On 02/15, I-D adjusted to meet flow target as directed by the Trust.

Table 3 - Interceptor Well Field (IWF) Operational Metrics

Nevada Environmental Response Trust Groundwater Extraction and Treatment System Enhanced Operational Metrics																				
Date	I-G		I-H		I-I		I-J		I-K		I-L		I-M		I-N		I-O		I-P	
	Flow (gpm)	Water Elevation (ft amsl)	Flow (gpm)	Water Elevation (ft amsl)	Flow (gpm)	Water Elevation (ft amsl)	Flow (gpm)	Water Elevation (ft amsl)	Flow (gpm)	Water Elevation (ft amsl)	Flow ⁵ (gpm)	Water Elevation (ft amsl)	Flow ⁵ (gpm)	Water Elevation (ft amsl)	Flow ⁵ (gpm)	Water Elevation (ft amsl)	Flow (gpm)	Water Elevation (ft amsl)	Flow ⁵ (gpm)	Water Elevation (ft amsl)
02/01/19	0.13	1711.27	1.0	1709.26	5.1	1721.08	6.1	1712.03	3.5	1710.12	0.95	1715.65	2.1	1716.79	2.3	1715.94	1.5	1720.01	1.2	1719.38
02/02/19 ²	0.11	1718.92	0.89	1720.91	4.4	1722.72	5.2	1726.30	2.9	1721.05	0.80	1721.22	1.8	1720.69	2.0	1718.47	1.2	1721.20	1.0	1720.71
02/03/19 ²	0.10	1712.96	1.0	1709.34	4.2	1721.45	5.4	1712.03	3.1	1710.57	0.17	1720.90	1.5	1718.08	1.4	1718.11	1.2	1720.65	0.81	1720.03
02/04/19 ³	0.13	1713.78	2.1	1709.21	5.1	1721.32	6.1	1712.03	4.6	1709.46	0.59	1719.65	1.8	1718.16	1.7	1718.05	1.5	1720.57	1.1	1719.93
02/05/19	0.11	1713.69	1.2	1709.30	5.1	1721.26	6.3	1712.03	3.5	1709.17	0.59	1719.64	1.9	1718.23	1.7	1718.00	1.5	1720.52	1.1	1719.89
02/06/19	0.11	1713.58	1.2	1709.28	5.0	1721.21	6.2	1712.03	3.5	1710.04	0.97	1713.79	2.0	1717.63	2.4	1715.56	1.5	1720.37	1.5	1718.91
02/07/19	0.11	1713.69	1.1	1709.25	5.1	1721.15	6.2	1712.03	3.5	1709.95	1.3	1713.57	2.1	1717.58	2.7	1715.06	1.5	1720.18	1.7	1718.75
02/08/19	0.11	1713.80	1.1	1709.25	5.1	1721.14	6.2	1712.03	3.5	1709.38	1.2	1713.58	2.1	1717.57	2.7	1714.81	1.5	1720.09	1.6	1718.79
02/09/19	0.11	1713.70	1.1	1709.30	5.2	1721.13	6.2	1712.03	3.5	1710.43	1.2	1713.61	2.1	1717.61	2.7	1714.75	1.5	1720.09	1.6	1718.78
02/10/19	0.11	1713.63	1.1	1709.29	5.1	1721.11	6.2	1712.03	3.5	1709.88	1.2	1713.47	2.1	1717.62	2.7	1714.76	1.5	1720.04	1.6	1718.78
02/11/19 ³	0.11	1713.66	1.2	1709.24	5.1	1721.06	6.0	1712.03	3.3	1710.34	1.1	1714.91	2.1	1717.65	2.5	1715.47	1.5	1719.81	1.6	1718.77
02/12/19	0.11	1713.79	1.1	1709.36	5.1	1721.09	6.2	1712.03	3.5	1709.20	1.1	1714.80	2.1	1717.72	2.5	1715.62	1.5	1719.78	1.6	1718.76
02/13/19	0.11	1713.79	1.1	1709.27	5.1	1721.11	6.2	1712.03	3.5	1710.22	1.1	1715.38	2.1	1717.79	2.5	1715.86	1.5	1719.84	1.6	1718.75
02/14/19	0.11	1713.83	1.1	1709.28	5.1	1721.10	6.2	1712.03	3.5	1709.42	1.1	1715.25	2.0	1718.09	2.5	1715.73	1.5	1719.82	1.6	1718.75
02/15/19	0.11	1713.77	1.1	1709.24	5.1	1721.07	6.1	1712.04	3.5	1710.07	1.1	1715.24	2.0	1718.19	2.5	1715.82	1.5	1719.78	1.6	1718.72
02/16/19	0.11	1713.75	1.1	1709.22	5.2	1721.06	6.1	1712.04	3.5	1710.36	1.1	1715.27	1.9	1718.20	2.6	1715.92	1.5	1719.76	1.6	1718.77
02/17/19	0.11	1713.66	1.1	1709.24	5.2	1721.06	6.1	1712.04	3.5	1710.26	1.1	1714.91	2.0	1718.17	2.5	1716.24	1.5	1719.55	1.5	1718.88
02/18/19 ³	0.11	1713.67	1.5	1709.30	5.1	1721.05	6.2	1712.03	3.1	1710.42	1.1	1715.07	2.0	1718.21	2.5	1716.30	1.5	1719.34	1.5	1718.88
02/19/19	0.11	1713.76	1.1	1709.26	5.1	1721.06	6.2	1712.01	3.5	1709.77	1.1	1715.11	2.0	1718.22	2.5	1716.25	1.5	1719.14	1.5	1718.86
02/20/19	0.11	1713.77	1.1	1709.30	5.1	1721.10	6.2	1712.01	3.5	1710.12	1.1	1715.24	2.0	1718.29	2.5	1716.36	1.5	1718.93	1.5	1718.94
02/21/19	0.11	1713.75	1.1	1709.30	5.2	1721.10	6.2	1712.02	3.5	1709.22	1.1	1715.36	1.9	1718.31	2.5	1716.36	1.5	1718.72	1.5	1718.99
02/22/19	0.11	1713.68	1.1	1709.34	5.2	1721.05	6.2	1712.01	3.5	1709.16	1.1	1715.51	1.9	1718.37	2.5	1716.39	1.5	1718.74	1.5	1718.95
02/23/19	0.11	1713.74	1.1	1709.39	5.2	1721.05	6.1	1712.01	3.5	1709.81	1.1	1715.75	1.9	1718.37	2.5	1716.45	1.5	1719.22	1.5	1718.93
02/24/19	0.11	1713.84	1.1	1709.32	5.2	1721.08	6.2	1712.02	3.5	1710.20	1.1	1716.14	1.9	1718.40	2.5	1716.50	1.5	1718.87	1.5	1718.97
02/25/19 ³	0.11	1713.87	1.1	1709.40	5.1	1721.11	6.2	1712.02	3.5	1710.33	1.0	1716.74	1.9	1718.31	2.5	1716.58	1.5	1719.21	1.5	1718.96
02/26/19	0.11	1713.87	1.1	1709.28	5.1	1721.12	6.2	1712.02	3.5	1710.26	0.99	1716.66	1.9	1718.37	2.4	1716.62	1.5	1718.64	1.5	1718.97
02/27/19	0.11	1713.90	1.1	1709.35	5.1	1721.14	6.2	1712.02	3.5	1710.15	1.0	1716.70	1.9	1718.41	2.4	1716.67	1.5	1718.58	1.5	1718.98
02/28/19	0.11	1713.96	1.1	1709.41	5.1	1721.17	6.2	1712.02	3.5	1710.17	1.0	1716.80	1.9	1718.45	2.5	1716.75	1.5	1718.75	1.5	1719.02
Monthly Average	0.11	1713.83	1.1	1709.71	5.1	1721.18	6.1	1712.54	3.5	1710.34	1.0	1715.93	2.0	1718.12	2.4	1716.26	1.5	1719.65	1.5	1719.06
Analytical ¹	Conc (mg/L)	Date	Conc (mg/L)	Date	Conc (mg/L)	Date	Conc (mg/L)	Date	Conc (mg/L)	Date	Conc (mg/L)	Date	Conc (mg/L)	Date	Conc (mg/L)	Date	Conc (mg/L)	Date	Conc (mg/L)	Date
Perchlorate	1,300	2/20/2019	990	2/20/2019	720	2/19/2019	320	2/19/2019	270	2/19/2019	320	2/25/2019	660	2/25/2019	460	2/20/2019	860	2/20/2019	930	2/20/2019
Hexavalent Chromium	19	2/20/2019	14	2/20/2019	8.9	2/19/2019	3.9	2/19/2019	2.4	2/19/2019	0.86	2/25/2019	5.6	2/25/2019	5.9	2/20/2019	15	2/20/2019	14	2/20/2019
Total Chromium	20	2/20/2019	14	2/20/2019	9.4	2/19/2019	3.9	2/19/2019	2.3	2/19/2019	1.1	2/25/2019	5.8	2/25/2019	6.7	2/20/2019	17	2/20/2019	16	2/20/2019

Notes:

Flow reported as gpm is a daily average calculated from the totalizer reading.

1: Analytical results are reported from TestAmerica.

2: On 02/02 and 02/03, IWF wells offline intermittently due to maintenance.

3: On 02/04, 02/11, 02/18, and 02/25, the IWF totalizers were reset. Instantaneous flow rate at the time of the water level measurement was used for these dates.

5: On 02/06, I-D, I-L, I-M, I-N, I-P, I-R, I-U, and I-W adjusted to meet flow target as directed by the Trust.

Table 3 - Interceptor Well Field (IWF) Operational Metrics

Nevada Environmental Response Trust Groundwater Extraction and Treatment System Enhanced Operational Metrics																				
Date	I-Q		I-R		I-S		I-T		I-U		I-V		I-W		I-X		I-Z			
	Flow (gpm)	Water Elevation (ft amsl)	Flow ³ (gpm)	Water Elevation (ft amsl)	Flow (gpm)	Water Elevation (ft amsl)	Flow (gpm)	Water Elevation (ft amsl)	Flow ³ (gpm)	Water Elevation (ft amsl)	Flow (gpm)	Water Elevation (ft amsl)	Flow ³ (gpm)	Water Elevation (ft amsl)	Flow (gpm)	Water Elevation (ft amsl)	Flow (gpm)	Water Elevation ⁷ (ft amsl)		
02/01/19	0.36	1714.83	0.83	1716.55	2.0	1705.75	0.45	1707.92	0.62	1712.36	4.2	1718.08	0.69	1700.48	3.2	1698.30	1.4	1700.15	7.2	< 1707.89
02/02/19 ²	0.30	1718.31	0.69	1720.71	1.7	1721.23	0.38	1719.58	0.47	1720.57	3.6	1721.97	0.62	1700.53	2.7	1717.86	1.2	1700.25	6.1	< 1707.89
02/03/19 ²	0.26	1716.10	0.34	1719.00	2.0	1705.72	0.41	1707.87	0.24	1717.51	3.4	1718.99	0.64	1699.73	3.0	1698.29	1.1	1711.57	6.4	< 1707.89
02/04/19 ³	0.29	1716.56	0.40	1718.99	2.0	1705.78	0.47	1707.86	0.35	1717.14	4.3	1718.81	0.81	1699.98	3.0	1698.35	1.4	1710.64	7.6	< 1707.89
02/05/19	0.29	1716.66	0.39	1718.96	2.4	1705.72	0.48	1707.86	0.35	1716.98	4.3	1718.69	0.82	1700.05	3.5	1698.29	1.4	1710.17	7.4	< 1707.89
02/06/19	0.24	1717.00	0.80	1715.67	2.3	1705.87	0.47	1707.85	0.54	1711.48	4.2	1718.57	0.80	1699.61	3.4	1698.29	1.4	1708.13	7.3	< 1707.89
02/07/19	0.24	1716.96	1.1	1715.36	2.2	1705.87	0.47	1707.85	0.68	1711.27	4.3	1718.41	0.76	1699.95	3.4	1698.33	1.4	1708.26	7.4	< 1707.89
02/08/19	0.24	1716.97	1.1	1715.24	2.2	1705.79	0.47	1707.85	0.69	1711.32	4.2	1718.37	0.75	1699.51	3.3	1698.32	1.4	1708.04	7.3	< 1707.89
02/09/19	0.24	1716.97	1.1	1715.32	2.2	1705.85	0.47	1707.85	0.67	1711.29	4.2	1718.35	0.74	1699.64	3.3	1698.27	1.4	1708.16	7.3	< 1707.89
02/10/19	0.24	1716.95	1.1	1715.28	2.1	1705.73	0.46	1707.85	0.67	1711.07	4.2	1718.29	0.73	1699.91	3.3	1698.28	1.4	1708.13	7.3	< 1707.89
02/11/19 ³	0.20	1717.14	1.0	1715.87	2.2	1705.73	0.48	1707.85	0.67	1711.53	4.3	1718.18	0.74	1700.02	3.6	1698.35	1.4	1704.20	7.4	< 1707.89
02/12/19	0.19	1717.28	1.0	1715.89	2.2	1705.71	0.46	1707.86	0.66	1711.56	4.3	1718.19	0.72	1699.55	3.3	1698.31	1.4	1705.42	7.3	< 1707.89
02/13/19	0.20	1717.13	1.0	1715.81	2.2	1705.81	0.46	1707.86	0.65	1711.97	4.3	1718.24	0.72	1699.72	3.3	1698.35	1.4	1705.36	7.3	< 1707.89
02/14/19	0.22	1717.14	1.0	1715.76	2.2	1705.84	0.47	1707.86	0.64	1712.11	4.2	1718.22	0.72	1699.62	3.3	1698.32	1.4	1705.46	7.3	< 1707.89
02/15/19	0.22	1717.18	1.0	1715.82	2.2	1705.83	0.46	1707.86	0.63	1712.18	4.2	1718.19	0.72	1699.97	3.3	1698.32	1.4	1705.77	7.3	< 1707.89
02/16/19	0.23	1716.91	1.0	1715.86	2.2	1705.90	0.46	1707.86	0.62	1712.17	4.2	1718.15	0.71	1699.85	3.4	1698.33	1.4	1705.62	7.3	< 1707.89
02/17/19	0.25	1716.90	1.0	1715.91	2.2	1705.73	0.46	1707.86	0.85	1711.91	4.2	1718.16	0.72	1700.43	3.4	1698.26	1.4	1705.26	7.3	< 1707.89
02/18/19 ³	0.26	1716.74	0.98	1716.00	2.1	1705.87	0.44	1707.86	0.65	1711.90	4.3	1718.12	0.73	1700.32	3.5	1698.25	1.4	1705.38	7.6	< 1707.89
02/19/19	0.26	1716.84	0.99	1715.88	2.2	1705.93	0.46	1707.86	0.65	1711.81	4.3	1718.13	0.72	1700.22	3.4	1698.28	1.4	1705.33	7.3	< 1707.89
02/20/19	0.25	1716.93	0.97	1716.06	2.2	1705.83	0.47	1707.78	0.65	1712.16	4.3	1718.23	0.72	1700.38	3.4	1698.19	1.4	1705.41	7.3	< 1707.89
02/21/19	0.25	1716.94	0.97	1716.08	2.2	1705.75	0.47	1707.77	0.63	1712.10	4.3	1718.24	0.73	1700.48	3.4	1698.16	1.4	1706.08	7.3	< 1707.89
02/22/19	0.25	1716.86	0.96	1716.21	2.2	1705.73	0.47	1707.78	0.63	1712.07	4.3	1718.13	0.72	1700.40	3.4	1698.18	1.4	1706.02	7.3	< 1707.89
02/23/19	0.25	1716.84	0.79	1717.24	2.2	1705.74	0.46	1707.78	0.62	1712.27	4.3	1718.11	0.71	1700.51	3.4	1698.19	1.4	1706.06	7.2	< 1707.89
02/24/19	0.24	1716.93	0.73	1717.56	2.3	1705.73	0.47	1707.77	0.63	1712.07	4.2	1718.20	0.72	1700.43	3.4	1698.12	1.4	1705.91	7.3	< 1707.89
02/25/19 ³	0.23	1717.12	0.66	1717.77	2.3	1705.73	0.47	1707.78	0.63	1712.17	4.3	1718.25	0.72	1700.49	3.4	1698.21	1.4	1708.77	7.3	< 1707.89
02/26/19	0.22	1717.13	0.60	1717.89	2.3	1705.69	0.47	1707.78	0.62	1712.36	4.3	1718.27	0.72	1700.49	3.4	1698.12	1.4	1709.39	7.3	< 1707.89
02/27/19	0.22	1717.15	0.57	1718.01	2.3	1705.72	0.47	1707.79	0.61	1712.59	4.3	1718.29	0.73	1700.06	3.4	1698.13	1.4	1709.57	7.3	< 1707.89
02/28/19	0.22	1717.20	0.58	1718.03	2.3	1705.87	0.47	1707.79	0.60	1712.46	4.3	1718.34	0.73	1701.20	3.4	1698.21	1.4	1709.88	7.3	< 1707.89
Monthly Average	0.24	1716.92	0.84	1716.74	2.2	1706.34	0.46	1708.25	0.60	1712.80	4.2	1718.43	0.73	1700.13	3.3	1698.96	1.4	1706.73	7.3	< 1707.89
Analytical ¹	Conc (mg/L)	Date	Conc (mg/L)	Date	Conc (mg/L)	Date	Conc (mg/L)	Date	Conc (mg/L)	Date	Conc (mg/L)	Date	Conc (mg/L)	Date	Conc (mg/L)	Date	Conc (mg/L)	Date	Conc (mg/L)	Date
Perchlorate	690	2/20/2019	890	2/25/2019	400	2/25/2019	1,200	2/20/2019	1,300	2/20/2019	830	2/19/2019	890	2/20/2019	1,800	2/20/2019	600	2/25/2019	550	2/19/2019
Hexavalent Chromium	15	2/20/2019	0.54	2/25/2019	1.3	2/25/2019	18	2/20/2019	16	2/20/2019	12	2/19/2019	14	2/20/2019	8.5	2/20/2019	0.84	2/25/2019	7.4	2/19/2019
Total Chromium	16	2/20/2019	0.56	2/25/2019	1.3	2/25/2019	19	2/20/2019	19	2/20/2019	12	2/19/2019	16	2/20/2019	9.5	2/20/2019	0.88	2/25/2019	7.3	2/19/2019

Notes:
 Flow reported as gpm is a daily average calculated from the totalizer reading.
 1: Analytical results are reported from TestAmerica.
 2: On 02/02 and 02/03, IWF wells offline intermittently due to maintenance.
 3: On 02/04, 02/11, 02/18, and 02/25, the IWF totalizers were reset. Instantaneous flow rate at the time of the water level measurement was used for these dates.
 5: On 02/06, I-D, I-L, I-M, I-N, I-P, I-R, I-U, and I-W adjusted to meet flow target as directed by the Trust.
 7: A "<" preceding the water elevation indicates the reported water level is below the transducer. Average monthly water elevation calculations include the transducer elevation in instances where the water level is below the transducer.

Nevada Environmental Response Trust Groundwater Extraction and Treatment System Enhanced Operational Metrics																
Date	LS #2	GWTP Effluent ¹				GW-11 Influent ¹				FBR Plant Influent ¹						
	Flow (gpm)	Flow ⁴ (gpm)	TA - Cr (TR) (mg/L)	TA - Cr (VI) (mg/L)	TA - ClO ₂ (mg/L)	Flow ⁵ (gpm)	TA - Cr (TR) (mg/L)	TA - Cr (VI) (mg/L)	TA - ClO ₂ (mg/L)	Flow ⁶ (gpm)	TA - ClO ₂ (mg/L)	ETI - ClO ₂ (mg/L)	TA - ClO ₂ (mg/L)	TA - NO ₃ - N (mg/L)	TA - Cr (TR) (mg/L)	TA - Cr (VI) (mg/L)
02/01/19	901	56				0.00				1,103		271				
02/02/19	958	57				0.00				1,123	260	264				
02/03/19	957	51				2.3				1,267		244				
02/04/19 ³	994	57				1.5				1,103		226		7.5	0.063	0.053
02/05/19	955	72				0.00				1,027		221				
02/06/19	955	68	0.13	0.0015	640	0.00				1,023		231				
02/07/19	955	68				0.00				1,023		256				
02/08/19	963	69				0.00				1,032		274				
02/09/19	954	69				0.00				1,023	280	257				
02/10/19	954	67				0.00				1,021		250				
02/11/19 ³	1,008	72				0.00				1,080		224	130	8.6	0.025	0.023
02/12/19	953	72				0.00				1,041		268				
02/13/19	963	72	0.39	ND	610	0.00				1,035		252				
02/14/19	954	69				0.00				1,028		261				
02/15/19	952	69				0.00				1,049		229				
02/16/19	953	69				0.00				1,111	270	225				
02/17/19	953	71				0.00				1,097		203				
02/18/19 ³	1,028	72				0.00				1,100		199		10	0.026	0.025
02/19/19	912	73				0.00				985		228				
02/20/19	1,014	73				5.2	0.25	0.21	51	1,104		226				
02/21/19	962	72	0.44	ND	710	0.00				1,056		222				
02/22/19	952	70				0.00				1,022		219				
02/23/19	955	70				0.00				1,067	250	213				
02/24/19	954	70				0.00				1,109		227				
02/25/19 ³	949	73				0.00				1,138		209		9.2	0.065	0.033
02/26/19	945	72				0.00				1,061		177				
02/27/19	965	72	1.9 B	ND	780	0.00				1,076		232				
02/28/19	955	69				0.00				1,068		214				
Monthly Average ²	960	68	0.61	0.00044	677	0.32	0.25	0.21	51	1,070	264	233	130	8.8	0.045	0.034

Notes:

Flow reported as gpm is a daily average calculated from the totalizer reading. The only exceptions are the instantaneous flow readings recorded for the 1st and 2nd Stage FBR flows.

ND = Not detected above laboratory method detection limit (ClO₂ = 0.5 ug/L; ClO₃ = 10 ug/L; NO₃-N= 0.055 mg/L, Cr(VI) = 0.25 ug/L).

B = Compound was found in the blank and sample.

1: ETI = Envirogen internal process control data, TA = TestAmerica data.

2: All average concentrations reported are monthly flow weighted averages.

3: On 02/04, 02/11, 02/18, and 02/25, the LS #2 totalizers was reset. Instantaneous flow rate at the time of the water level measurement was used for these dates.

4: On 02/02, GWTP offline briefly due to maintenance.

5: Flows bypassed GW-11 Influent and FBR Plant Influent totalizers from 02/01 to 02/28 due to FBR plant influent strainers clogging, except for monthly sampling and from 02/03 to 02/04 due to maintenance.

6: From 02/01 to 02/28, the FBR Plant Influent Flow was estimated by summing flows for LS #2, GWTP Effluent, and GW-11 Effluent.

Table 4 - Treatment Plant Operational Metrics

Nevada Environmental Response Trust Groundwater Extraction and Treatment System Enhanced Operational Metrics														
Date	1st Stage FBR ⁷			2nd Stage FBR ⁷			FBR Plant Effluent ¹							
	Flow (gpm)	pH (s.u.)	ORP (mV)	Flow (gpm)	pH (s.u.)	ORP (mV)	Flow ⁸ (gpm)	TA - ClO ₂ (mg/L)	ETI - ClO ₂ (mg/L)	TA - ClO ₃ (mg/L)	TA - Cr (TR) (mg/L)	TA - Cr (VI) (mg/L)	TA - NO ₃ - N (mg/L)	ETI - Turbidity (NTU)
02/01/19	1,141	6.7	-350	1,005	6.8	-374	993		ND					2
02/02/19	1,142	6.9	-387	958	7.1	-382	1,110	ND	ND					2
02/03/19	1,085	7.3	-386	897	7.2	-399	1,070		ND					2
02/04/19	1,098	6.6	-350	781	6.7	-387	1,036		ND		0.012	ND	ND	2
02/05/19	964	6.4	-378	790	6.6	-382	1,002		ND					3
02/06/19	963	6.4	-385	719	6.6	-382	951		ND					3
02/07/19	964	6.4	-388	606	6.4	-380	949		ND					3
02/08/19	1,040	6.4	-388	928	6.4	-379	951		ND					3
02/09/19	1,091	6.6	-390	982	6.8	-380	1,066	0.014	ND					3
02/10/19	1,090	6.5	-387	854	6.6	-383	1,072		ND					2
02/11/19	1,062	6.4	-391	898	6.6	-384	1,060		ND	ND	0.0079	ND	ND	2
02/12/19	1,076	6.5	-394	779	6.8	-384	1,063		ND					3
02/13/19	1,066	6.7	-395	847	7.0	-387	1,067		ND					3
02/14/19	1,118	6.5	-395	931	7.1	-388	1,068		ND					2
02/15/19	1,138	6.6	-397	902	7.0	-390	1,092		ND					2
02/16/19	1,137	6.6	-398	1,009	6.8	-391	1,114	0.026	ND					2
02/17/19	1,064	6.4	-399	791	6.7	-392	1,087		ND					2
02/18/19	1,074	6.4	-400	1,064	6.8	-393	1,060		ND		0.0067	ND	ND	2
02/19/19	1,082	6.5	-379	951	6.6	-394	1,048		ND					2
02/20/19	1,087	6.6	-386	900	6.8	-384	1,076		ND					2
02/21/19	1,087	6.6	-386	900	6.8	-384	1,089		ND					2
02/22/19	1,112	6.5	-384	870	6.6	-384	1,072		ND					2
02/23/19	1,138	6.6	-386	948	6.6	-382	1,083	0.018	ND					2
02/24/19	1,137	6.8	-389	1,009	6.8	-383	1,121		ND					2
02/25/19	1,132	7.0	-385	974	6.9	-375	1,110		ND		0.0130	ND	ND	9
02/26/19	1,132	6.8	-390	1,078	6.8	-374	1,107		ND					5
02/27/19	1,066	6.9	-381	946	7.0	-377	1,081		ND					4
02/28/19	1,153	7.0	-392	894	7.1	-378	1,096		ND					2
Monthly Average ²	1,087	6.6	-386	900	6.8	-384	1,060	0.016	ND	ND	0.0099	ND	ND	3

Notes:

Flow reported as gpm is a daily average calculated from the totalizer reading. The only exceptions are the instantaneous flow readings recorded for the 1st and 2nd Stage FBR flows.

ND = Not detected above laboratory method detection limit (ClO₂ = 0.5 ug/L; ClO₃ = 10 ug/L; NO₃-N= 0.055 mg/L, Cr(VI) = 0.25 ug/L).

J = Result is less than the reporting limit but greater than or equal to the method detection limit and the concentration is an approximate value.

1: ETI = Envirogen internal process control data, TA = TestAmerica data.

2: All average concentrations reported are monthly flow weighted averages.

7: For 1st and 2nd stage FBRs, flow measurements are collected from the influent lines and pH and ORP samples are collected from the recycle lines.

8: FBR Plant Effluent represents effluent discharged to Las Vegas Wash. While this may represent the entirety of the FBR Plant effluent, any diversions to GW-11 are subtracted from the original effluent flow.

GW-11 Level Monitoring		
Date	Field Measurement (ft)	Volume (MG)
02/15/19	28.3	38.9
02/28/19	28.6	38.5

GW-11 Leak Detection Monitoring				
Date	Amount Pumped ¹ (gallons)			
	NW Corner	NE Corner	SW Corner	SE Corner
02/13/19	0	968	687	0
02/27/19	0	344	659	0

GW-11 Composite Sample ²		
Analytes	Concentration	Units
Perchlorate	26	mg/L
Chlorate	98	mg/L
Ammonia as N	0.60	mg/L
Total Phosphorus	1.2	mg/L
Total Dissolved Solids (TDS)	9,000	mg/L
Total Suspended Solids (TSS)	95	mg/L
pH	8.3 HF	s.u.
Calcium	420	mg/L
Iron	1.5	mg/L
Chromium (total)	0.36	mg/L
Chromium VI	0.16	mg/L
Chloride	2,800	mg/L
Nitrate as N	ND	mg/L
Sulfate	2,400	mg/L

Notes:

HF = Field parameter with a holding time of 15 minutes. Test performed by laboratory at client's request.

B = Compound was found in the blank and sample.

ND = Not detected above laboratory method detection limit (NH₃-N = 0.1 mg/L; Total P = 0.025 ug/L; Cr(VI) = 0.25 ug/L).

1: Pumping occurs over three consecutive days. The total amount pumped over the three day period is listed with the last day pumping occurred.

2: GW-11 Corner Composite Sample is collected quarterly, most recent sampling results are presented. Sampled on: February 27, 2019.

Nevada Environmental Response Trust Groundwater Extraction and Treatment System Enhanced Operational Metrics						
Date	Flow ¹ (gpm)	FBR Influent Concentration			Influent Function Load ³ (lbs/day)	6 Month Rolling Average (lbs/day)
		ClO ₄ ² (mg/L)	NO ₃ as N (mg/L)	ClO ₃ (mg/L)		
Mar 2018	1,094	168	13	130	836	978
Apr 2018	1,079	91	13	120	624	945
May 2018	1,044	116	12	150	719	894
June 2018	1,037	133	11	160	765	843
July 2018	1,028	113	11	150	691	788
Aug 2018	1,005	106	11	140	633	711
Sep 2018	1,030	117	10	150	691	687
Oct 2018	1,028	208	10.0	140	867	728
Nov 2018	1,042	262	10	130	979	771
Dec 2018	1,046	262	10	140	1,009	811
Jan 2019	1,067	247	10	140	991	861
Feb 2019	1,070	264	9	130	997	922

Notes:

Concentrations and flow are presented as monthly average.

1: Flow used in loading calculation is average monthly FBR effluent flow to be consistent with historical loading calculations.

2: Treatment of AP-5 wash water began on July 17, 2017 and was suspended on August 4, 2017 to allow Envirogen to evaluate internal process controls to meet discharge limits. Treatment of AP-5 wash water resumed on August 31, 2017. The AP-5 wash water feed rate was decreased on March 13, 2018 to prepare for the lower seasonal ammonia permit limits beginning April 1. The AP-5 wash water feed rate was increased on October 1, 2018 in accordance with the higher seasonal ammonia permit limits beginning October 1.

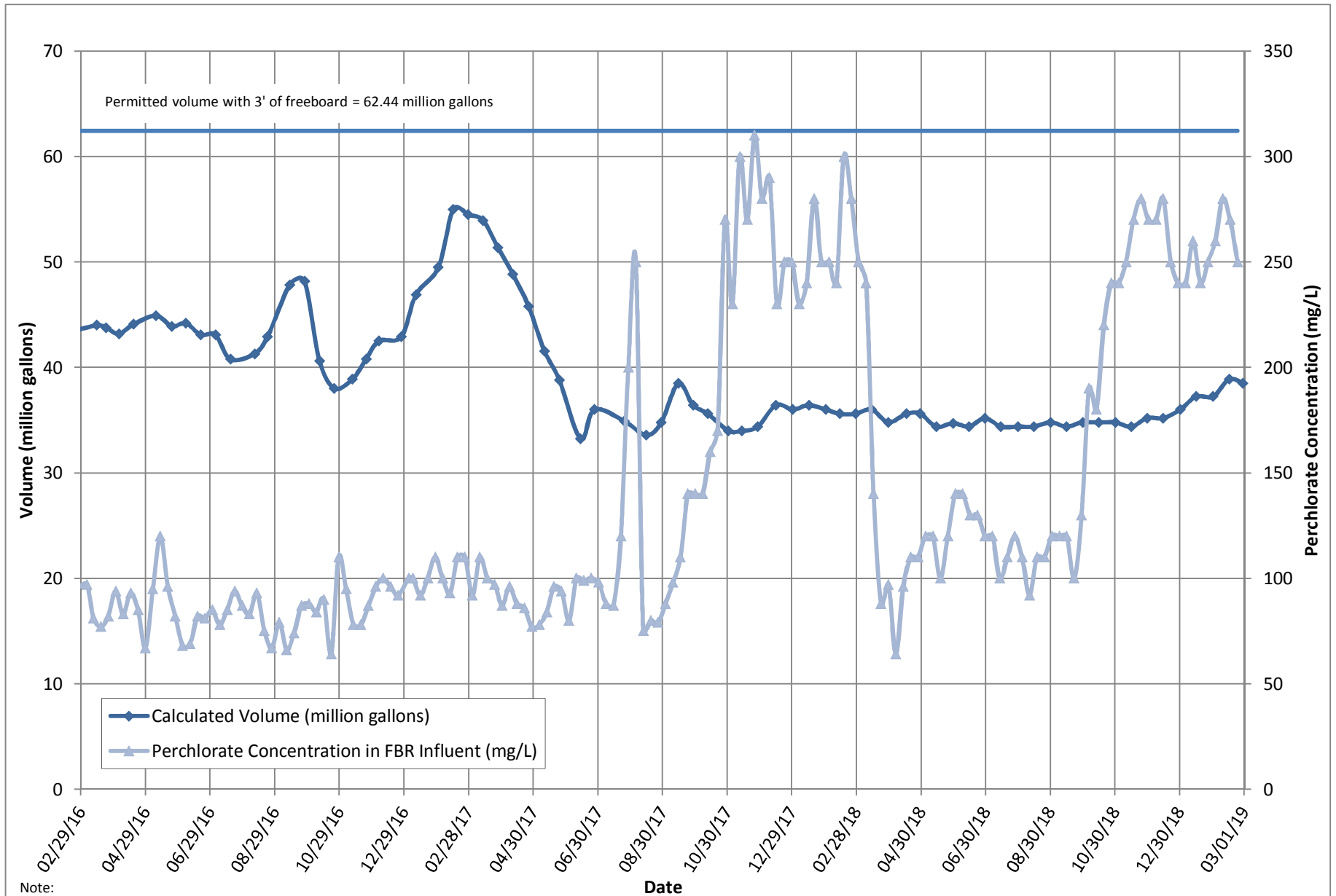
3: FBR loading calculated as $[(0.9 \times \text{NO}_3 \text{ as N} + 0.17 \times \text{ClO}_3 + 0.18 \times \text{ClO}_4) \times \text{Flow} \times 1440 / 1000000 \times 8.34]$.

Table 7 - AP Area Operational Metrics

Nevada Environmental Response Trust Groundwater Extraction and Treatment System Enhanced Operational Metrics																
Date	E1-1		E1-2		E1-3		E2-1		E2-2		E2-3		E2-4		E2-5	
	Flow (gpm)	Water Elevation (ft amsl)	Flow ³ (gpm)	Water Elevation (ft amsl)	Flow (gpm)	Water Elevation (ft amsl)	Flow ^{4,5,6,7} (gpm)	Water Elevation (ft amsl)	Flow (gpm)	Water Elevation (ft amsl)	Flow (gpm)	Water Elevation (ft amsl)	Flow (gpm)	Water Elevation (ft amsl)	Flow (gpm)	Water Elevation (ft amsl)
02/01/19	2.2	1713.63	0.75	1708.90	0.74	1713.47	0.79	1715.24	1.4	1714.87	1.6	1717.23	1.4	1716.59	0.40	1716.46
02/02/19	1.7	1713.31	0.60	1712.19	0.60	1713.28	0.79	1713.86	1.2	1714.40	0.94	1716.43	1.0	1715.65	0.29	1715.34
02/03/19	2.0	1717.18	0.00	1709.51	0.68	1715.28	0.79	1717.60	1.4	1712.74	0.12	1723.70	1.2	1718.40	0.34	1718.27
02/04/19	1.9	1715.99	0.00	1709.60	0.83	1715.12	0.79	1719.90	1.6	1713.52	0.68	1723.40	1.3	1718.81	0.37	1718.47
02/05/19	2.1	1717.60	0.78	1720.96	0.53	1716.00	0.79	1718.93	1.5	1712.74	0.91	1722.20	1.3	1717.52	0.32	1716.42
02/06/19	0.93	1717.35	0.78	1707.21	0.61	1710.66	0.79	1716.98	1.4	1714.40	0.92	1724.69	1.3	1717.93	0.32	1717.48
02/07/19	3.8	1716.44	0.18	1708.43	0.70	1710.81	0.79	1708.91	1.8	1714.44	0.37	1723.01	1.5	1717.91	0.41	1717.51
02/08/19	2.6	1719.97	0.50	1714.60	0.64	1710.50	0.79	1714.20	1.6	1714.00	0.83	1721.57	1.6	1715.27	0.42	1715.46
02/09/19	2.6	1713.66	0.52	1714.20	0.63	1710.66	0.79	1720.65	1.2	1714.26	0.58	1718.91	1.1	1715.66	0.30	1715.60
02/10/19	2.6	1713.19	0.49	1713.41	0.64	1711.49	0.79	1757.32	1.6	1723.50	0.68	1727.03	1.4	1725.96	0.44	1725.47
02/11/19	2.6	1711.63	0.56	1715.32	0.65	1710.82	0.79	1708.72	1.6	1715.64	0.78	1725.15	1.4	1718.56	0.42	1716.77
02/12/19	2.5	1711.51	0.54	1714.24	0.63	1710.76	0.79	1716.66	1.6	1714.27	0.88	1723.89	1.4	1715.85	0.41	1715.94
02/13/19 ²	2.5	1711.53	0.56	1714.28	0.64	1710.71	0.79	1708.77	1.5	1713.07	0.93	1723.07	1.3	1717.22	0.39	1716.10
02/14/19 ²	2.6	1711.82	0.52	1714.46	0.65	1710.82	0.79	1720.87	1.5	1714.61	0.76	1723.07	1.3	1716.10	0.38	1716.08
02/15/19	2.4	1710.61	0.60	1714.70	0.62	1710.70	0.79	1718.80	1.5	1716.30	0.77	1717.87	1.3	1719.39	0.38	1717.28
02/16/19	2.5	1710.81	0.79	1713.71	0.65	1710.74	0.79	1718.36	1.4	1716.46	0.79	1717.50	1.2	1717.43	0.37	1717.40
02/17/19	2.4	1710.88	0.74	1713.74	0.68	1711.01	0.79	1718.92	1.5	1715.40	0.78	1717.44	1.3	1718.61	0.43	1717.37
02/18/19	2.6	1710.93	0.70	1714.00	0.60	1711.04	0.79	1718.58	1.5	1715.30	0.82	1717.47	2.0	1718.00	0.31	1717.42
02/19/19	2.2	1710.94	0.70	1713.76	0.59	1711.11	0.79	1708.72	1.4	1715.42	0.45	1722.94	0.76	1714.71	0.37	1717.32
02/20/19	2.8	1711.02	0.67	1714.22	0.68	1712.63	0.64	1720.78	1.6	1715.45	2.0	1719.11	2.6	1715.57	0.33	1717.44
02/21/19	2.4	1710.95	0.67	1714.32	0.60	1711.71	0.97	1718.61	1.4	1715.42	1.2	1721.17	1.4	1715.59	0.37	1717.42
02/22/19	2.5	1710.67	0.70	1713.75	0.60	1711.54	1.0	1717.21	1.4	1715.26	1.2	1715.69	1.4	1716.16	0.36	1716.43
02/23/19	2.4	1711.31	0.67	1713.56	0.58	1711.75	1.0	1717.07	1.4	1715.06	1.2	1718.60	1.4	1716.37	0.38	1717.62
02/24/19	2.5	1711.01	0.55	1713.71	0.72	1711.96	0.91	1715.82	1.6	1715.35	1.5	1717.94	1.8	1715.49	0.64	1717.64
02/25/19	2.5	1710.92	0.69	1713.75	0.71	1711.48	0.91	1710.32	1.5	1713.62	1.3	1717.25	1.5	1714.61	0.42	1712.32
02/26/19	2.5	1710.39	0.70	1713.45	0.70	1711.43	1.0	1722.12	1.5	1714.72	1.4	1717.70	1.5	1714.83	0.37	1714.48
02/27/19	2.5	1710.64	0.44	1709.57	0.70	1710.82	0.80	1708.62	1.5	1713.16	1.4	1716.79	1.4	1714.36	0.49	1713.54
02/28/19	2.2	1712.26	0.06	1723.76	0.71	1712.90	0.93	1717.33	1.5	1713.18	1.4	1716.34	1.5	1714.82	0.35	1712.87
Monthly Average	2.4	1712.79	0.55	1713.48	0.65	1711.83	0.83	1717.49	1.5	1714.88	0.97	1720.26	1.4	1716.91	0.38	1716.71
Analytical ¹	Conc (mg/L)	Date	Conc (mg/L)	Date	Conc (mg/L)	Date	Conc (mg/L)	Date	Conc (mg/L)	Date	Conc (mg/L)	Date	Conc (mg/L)	Date	Conc ⁸ (mg/L)	Date
Perchlorate	660	2/25/2019	1,700	2/25/2019	780	2/25/2019	160	2/25/2019	440	2/25/2019	980	2/25/2019	2,000	2/25/2019	1,950	2/25/2019
Hexavalent Chromium	0.040	2/25/2019	0.099	2/25/2019	0.20	2/25/2019	0.027	2/25/2019	0.025	2/25/2019	0.024	2/25/2019	0.034	2/25/2019	0.13	F1 2/25/2019
Total Chromium	0.044	2/25/2019	0.20	2/25/2019	0.44	2/25/2019	0.030	2/25/2019	0.027	2/25/2019	0.038	2/25/2019	0.15	2/25/2019	0.14	2/25/2019

Notes:
 Flow reported as gpm is a daily average calculated from the totalizer reading.
 The flow rate at individual wells is adjusted daily to maintain the water level in the wells above the pump.
 F1 = MS and/or MSD Recovery is outside acceptance limits.
 1: Analytical results are reported from TestAmerica.
 2: From 02/13 to 02/14, all AP Area wells offline due to rain.
 3: On 02/28, E1-2 offline briefly to install new motor.
 4: On 02/07, E2-1 offline briefly due to motor replacement.
 5: From 02/10 to 02/11, E2-1 offline intermittently due to instrument error and maintenance.
 6: On 02/19, E2-1 offline briefly to install new totalizer.
 7: On 02/25, E2-1 offline intermittently due to instrument error.
 8: Duplicates taken on 02/25 for well E2-5; average of both values is presented and used for calculations.

Figure 1 - GW-11 Pond Volume and FBR Influent Perchlorate Concentration



Note:

1. Treatment of AP-5 wash water began on July 17, 2017 and was suspended on August 4, 2017 to allow Envirogen to evaluate internal process controls to meet discharge limits. Treatment of AP-5 wash water resumed on August 31, 2017. The AP-5 wash water feed rate was decreased on March 13, 2018 to prepare for the lower seasonal ammonia permit limits beginning April 1. The AP-5 wash water feed rate was increased on October 1, 2018 in accordance with the higher seasonal ammonia permit limits beginning October 1.

Figure 2 - FBR Equivalent Loading Calculation

