

Nevada Environmental Response Trust Groundwater Extraction and Treatment System Enhanced Operational Metrics																				
Date	LS #1 Flow (gpm)	East Well (PC 116R)		Center Well (PC99R3)		West Well (PC 115R)		PC 117		PC 118		PC 119		PC 120		PC 121		PC 133		
		Flow (gpm)	Water Elevation (ft amsl)	Flow (gpm)	Water Elevation (ft amsl)	Flow (gpm)	Water Elevation (ft amsl)	Flow ⁹ (gpm)	Water Elevation (ft amsl)	Flow ^{9 10 11 12} (gpm)	Water Elevation (ft amsl)	Flow ^{9 10 11 12} (gpm)	Water Elevation (ft amsl)	Flow ^{9 12} (gpm)	Water Elevation (ft amsl)	Flow ¹² (gpm)	Water Elevation (ft amsl)	Flow ^{9 12} (gpm)	Water Elevation ² (ft amsl)	
03/01/17	538.0	133.9	1540.6	61.1	1543.7	114.3	1542.7	113.7	1538.8	59.9	1547.0	67.8	1548.3	90.2	1547.5	40.3	1549.2	9.0	1533.7	
03/02/17	546.0	134.2	1540.0	59.5	1543.5	108.4	1542.7	109.0	1538.6	57.7	1547.0	64.9	1548.3	80.2	1547.5	36.9	1549.3	9.9	1534.0	
03/03/17	556.0	133.2	1540.0	60.4	1543.7	109.6	1542.7	112.4	1538.6	60.4	1547.0	67.3	1548.3	86.7	1547.5	38.9	1549.3	5.6	1533.9	
03/04/17	557.0	134.8	1539.9	61.1	1543.7	111.7	1542.7	114.5	1538.6	60.4	1547.0	68.1	1548.3	86.4	1547.5	39.3	1549.2	6.3	1533.9	
03/05/17	555.0	133.2	1539.9	61.1	1543.9	110.3	1542.7	112.4	1538.6	59.7	1547.0	67.3	1548.2	90.6	1547.5	41.6	1549.2	11.1	1533.9	
03/06/17 ³	545.0	130.9	1539.9	55.4	1543.9	108.6	1542.7	109.8	1538.5	60.3	1546.9	65.9	1548.2	87.6	1547.5	39.3	1549.2	7.9	1533.9	
03/07/17	571.0	132.6	1539.8	60.4	1543.5	110.4	1542.5	109.7	1538.5	59.7	1546.9	67.4	1548.2	88.9	1547.4	40.3	1549.2	16.0	1533.8	
03/08/17	574.0	131.9	1539.8	59.8	1543.6	109.2	1542.5	114.5	1538.5	59.1	1546.9	66.6	1548.2	88.6	1547.4	39.8	1549.2	41.2	1533.8	
03/09/17	543.0	135.0	1539.8	61.2	1543.5	111.8	1542.5	113.9	1538.5	61.2	1546.9	68.2	1548.2	90.0	1547.4	40.8	1549.1	43.6	1520.2	
03/10/17	476.0	133.5	1539.8	60.5	1543.0	110.6	1542.5	112.7	1538.5	59.8	1546.9	67.5	1548.2	89.7	1547.4	40.3	1549.1	12.5	1520.0	
03/11/17	459.0	132.2	1539.7	60.9	1543.5	110.0	1542.4	112.1	1538.4	59.5	1546.8	67.1	1548.1	88.6	1547.4	40.8	1549.1	2.0	1520.0	
03/12/17 ⁴	478.0	127.8	1539.7	57.6	1543.3	106.3	1542.4	107.6	1538.4	57.6	1546.8	64.6	1548.1	85.4	1547.3	38.2	1549.1	3.0	< 1520.0	
03/13/17 ⁵	470.0	134.8	1539.7	87.8	1543.5	109.3	1542.4	110.9	1538.4	58.7	1546.8	68.4	1548.1	86.4	1547.3	40.9	1549.0	1.5	< 1520.0	
03/14/17	441.0	135.5	1539.6	61.4	1543.5	112.2	1542.4	114.3	1538.4	60.7	1546.8	68.5	1548.1	90.3	1547.3	40.9	1549.0	0.71	1520.0	
03/15/17	452.0	133.3	1539.6	61.1	1543.3	111.1	1542.4	112.5	1538.4	59.7	1546.8	67.4	1548.1	89.6	1547.3	40.3	1549.0	0.20	1520.0	
03/16/17	482.3	134.5	1539.6	60.9	1543.2	111.3	1542.3	113.4	1538.3	60.2	1546.7	68.6	1548.0	89.6	1547.2	41.3	1549.0	0.10	1520.0	
03/17/17	552.0	132.9	1539.6	60.2	1543.6	110.7	1542.3	112.1	1538.3	59.5	1546.7	67.1	1548.0	89.3	1547.2	41.5	1549.0	0.10	1525.2	
03/18/17	564.5	132.5	1539.6	60.7	1543.6	109.7	1542.3	111.8	1538.3	60.0	1546.7	66.9	1548.0	90.9	1547.3	40.5	1549.0	0.10	1525.1	
03/19/17	544.1	132.4	1539.5	60.0	1543.4	109.7	1542.3	111.0	1538.3	59.3	1546.7	66.9	1548.0	88.3	1547.2	39.3	1548.9	0.10	1525.0	
03/20/17 ³	528.0	134.2	1539.5	57.6	1543.3	109.8	1542.3	110.9	1538.3	58.3	1546.7	68.1	1548.0	90.8	1547.2	40.9	1548.9	0.10	1525.0	
03/21/17	529.0	133.0	1539.7	60.9	1543.5	110.6	1542.4	98.0	1538.4	60.2	1546.7	67.2	1548.0	60.9	1547.3	40.6	1549.0	2.1	1520.1	
03/22/17	547.2	131.9	1539.6	60.4	1543.4	110.4	1542.3	112.5	1538.3	60.4	1546.7	67.4	1548.0	88.2	1547.2	40.3	1548.9	9.0	< 1520.0	
03/23/17	546.5	131.9	1539.5	59.7	1543.4	110.4	1542.2	112.5	1538.3	59.7	1546.6	66.7	1547.9	87.5	1547.2	34.0	1548.2	9.7	< 1520.0	
03/24/17	546.8	131.9	1539.5	61.1	1543.5	111.0	1542.2	113.1	1538.2	60.4	1546.6	67.3	1547.9	88.1	1547.2	39.6	1548.1	9.7	< 1520.0	
03/25/17	546.2	132.0	1539.4	59.8	1543.2	109.8	1542.2	111.9	1538.2	59.8	1546.6	66.7	1547.9	87.6	1547.1	38.9	1548.1	9.0	< 1520.0	
03/26/17	546.5	132.8	1539.4	60.1	1543.4	111.1	1542.2	112.5	1538.2	60.1	1546.6	67.8	1547.8	88.7	1547.1	38.4	1548.1	9.8	< 1520.0	
03/27/17	546.1	131.2	1539.3	60.4	1543.5	110.3	1542.1	111.7	1538.2	59.7	1546.5	66.6	1547.8	87.4	1547.1	38.9	1548.6	9.7	< 1520.0	
03/28/17	546.8	131.9	1539.3	60.4	1543.2	108.3	1542.1	112.4	1538.2	59.7	1546.5	66.6	1547.8	87.4	1547.1	38.9	1548.6	9.0	< 1520.0	
03/29/17 ⁶	458.8	111.3	1539.6	50.8	1543.5	94.1	1542.4	93.4	1538.5	50.8	1546.7	56.3	1548.0	73.5	1547.3	24.0	1549.5	8.9	1520.0	
03/30/17	555.6	134.2	1539.4	60.1	1543.6	110.4	1542.2	112.5	1538.3	58.0	1546.6	65.0	1547.9	85.3	1547.2	31.4	1548.8	9.8	1520.0	
03/31/17	535.7	133.2	1539.3	61.1	1543.6	110.3	1542.1	112.4	1538.2	59.7	1546.5	66.6	1547.8	84.0	1547.1	37.5	1548.7	9.0	< 1520.0	
Monthly Average	527.0	132.2	1539.7	60.8	1543.5	109.7	1542.4	111.0	1538.4	59.4	1546.8	66.7	1548.0	86.7	1547.3	38.9	1548.9	8.6	1524.2	
Analytical ¹	Conc (mg/L)	Date	Conc (mg/L)	Date	Conc (mg/L)	Date	Conc (mg/L)	Date	Conc (mg/L)	Date	Conc (mg/L)	Date	Conc (mg/L)	Date	Conc (mg/L)	Date	Conc (mg/L)	Date	Conc (mg/L)	Date
Perchlorate	9.4	3/20/2017	11	3/20/2017	9.7	3/20/2017	4.5	3/20/2017	7.4	3/20/2017	2.4	3/20/2017	0.40	3/20/2017	0.44	3/20/2017	1.6	3/21/2017		
Hexavalent Chromium	0.0013	3/20/2017	ND	3/20/2017	ND	3/20/2017	0.0015	3/20/2017	ND	3/20/2017	ND	3/20/2017	ND	3/20/2017	ND	3/20/2017	ND	3/21/2017		
Total Chromium	0.0016	3/20/2017	0.00038 J	3/20/2017	ND	3/20/2017	0.0024 J	3/20/2017	ND	3/20/2017	ND	3/20/2017	ND	3/20/2017	ND	3/20/2017	0.00080 J	3/21/2017		

Notes:
 Flow reported as gpm is a daily average calculated from the totalizer reading.
 ND = Not detected above laboratory method detection limit (Cr(TR)=2.5 ug/L, Cr(VI) =0.20 ug/L).
 J = Result is less than the RL but greater than or equal to the MDL and the concentration is an approximate value. Indicates an Estimated Value for TICs.
 1: Analytical results are reported from TestAmerica.
 2: A "*" preceding the water elevation indicates the reported water level is below the transducer. Average monthly water elevation calculations include the transducer elevation in instances where the water level is below the transducer.
 3: On 03/06 and 03/20, SWF and LS #1 totalizers were reset.
 4: On 03/12, LS #1 was down due to LS #2 maintenance from 6:15 pm to 6:40 pm.
 5: On 03/13, SWF totalizers were reset.
 6: On 03/29, LS #1 off from 7:07 am to 10:48 am due to maintenance.
 7: Duplicate taken on 03/20 for Center Well; average of both values is presented and used for calculation purposes. The Total Chromium sample result was ND and was treated as a zero value for calculation of the average.
 8: On 03/21, PC 117, PC 120, and PC 133 off at 9:28 am for maintenance. PC 117 online at 12:31 pm, PC 120 and PC 133 online at 5:01 pm.
 9: On 03/02, PC 118, PC 119 and PC 133 off from 7:40 am to 8:53 am for maintenance.
 10: On 03/18, PC 118 and PC 119 flow directed to LS #1 at 7:12 am, then re-directed to IX system at 9:53 am.
 11: On 03/20, PC 118 and PC 119 flow redirected from IX to wet well from 10:05 am to 12:40 pm.
 12: On 03/30, PC 118, PC 119, PC 120, PC 121, and PC 133 off from 4:30 pm to 5:20 pm due to equipment malfunction after a 10-year wind storm.

Nevada Environmental Response Trust Groundwater Extraction and Treatment System Enhanced Operational Metrics																	
Date	LS #3 Flow (gpm)	ART 1A/1B		ART 2A/2B		ART 3A/3B		ART 4A/4B		ART 6/9		ART 7A/7B		ART 8A/8B		PC 150	
		Flow ⁵ (gpm)	Water Elevation (ft amsl)	Flow ^{6,7,8} (gpm)	Water Elevation (ft amsl)	Flow ⁶ (gpm)	Water Elevation ² (ft amsl)	Flow ^{6,7} (gpm)	Water Elevation ² (ft amsl)	Flow ^{6,7} (gpm)	Water Elevation (ft amsl)	Flow ^{6,7} (gpm)	Water Elevation (ft amsl)	Flow ¹⁰ (gpm)	Water Elevation (ft amsl)	Flow ^{6,7,11,12} (gpm)	Water Elevation (ft amsl)
03/01/17	370.3	34.2	1586.9	109.8	1586.5	31.4	1584.5	4.5	< 1575.0	55.5	1577.7	19.0	1579.6	142.3	1582.1	0.56	1584.1
03/02/17	369.4	34.2	1586.9	109.9	1586.6	31.5	1584.5	4.5	< 1575.0	55.9	1576.8	19.8	1579.6	142.3	1582.1	2.8	1584.2
03/03/17	370.6	34.0	1586.9	110.3	1586.6	30.5	1584.5	4.2	< 1575.0	55.5	1577.9	19.4	1579.6	143.0	1582.1	0.69	1584.2
03/04/17	369.4	34.4	1586.9	109.6	1586.6	31.6	1584.5	4.9	< 1575.0	54.8	1576.8	19.0	1579.7	143.3	1582.1	3.7	1584.3
03/05/17	369.2	33.3	1586.9	110.3	1586.6	31.2	1584.5	4.2	< 1575.0	54.8	1576.3	20.1	1579.6	142.3	1582.1	0.69	1584.2
03/06/17 ³	271.1	33.8	1586.9	111.2	1586.5	34.2	1584.5	3.2	< 1575.0	27.3	1577.7	17.8	1579.6	140.3	1582.0	3.5	1584.0
03/07/17	368.8	34.0	1586.9	109.7	1586.5	31.3	1584.5	4.2	< 1575.0	56.3	1576.0	19.4	1579.6	142.4	1582.0	0.69	1584.2
03/08/17	368.8	33.7	1586.9	109.9	1586.5	30.9	1584.5	4.1	< 1575.0	55.6	1576.0	19.2	1579.7	142.9	1582.0	1.2	1584.2
03/09/17	369.2	33.8	1586.9	109.7	1586.5	30.9	1584.5	4.2	< 1575.0	56.3	1575.9	19.0	1579.6	142.8	1582.0	0.70	1584.1
03/10/17	363.0	33.4	1586.9	107.8	1586.5	29.9	1584.4	4.2	< 1575.0	55.6	1577.6	19.5	1579.7	142.6	1582.0	1.0	1584.1
03/11/17	368.2	32.5	1586.9	109.3	1586.5	31.8	1584.4	4.2	< 1575.0	56.7	1576.5	19.4	1579.7	143.9	1582.0	0.69	1583.9
03/12/17 ⁴	347.9	31.9	1586.9	103.5	1586.5	28.5	1584.4	4.9	< 1575.0	53.5	1578.8	17.4	1579.6	138.2	1582.0	0.69	1584.1
03/13/17 ⁵	368.1	33.9	1586.8	107.2	1586.5	34.8	1584.4	4.3	< 1575.0	55.6	1577.2	21.0	1579.6	143.3	1582.0	1.3	1584.2
03/14/17	367.7	33.9	1586.8	108.7	1586.5	31.8	1584.4	4.9	< 1575.0	57.2	1576.8	19.1	1579.6	142.6	1582.0	0.71	1584.2
03/15/17	363.9	33.3	1586.8	104.2	1586.6	31.9	1584.4	4.2	< 1575.0	56.3	1576.6	18.8	1579.7	143.1	1582.0	1.3	1584.1
03/16/17	366.9	32.9	1586.8	109.2	1586.5	31.5	1584.4	4.9	< 1575.0	56.7	1576.3	20.3	1579.7	142.9	1581.9	0.70	1584.1
03/17/17	347.4	33.2	1587.0	108.7	1586.8	31.8	1584.5	4.2	< 1575.0	56.1	1576.0	18.7	1579.7	121.8	1582.1	0.69	1584.2
03/18/17	366.5	32.4	1586.8	109.0	1585.7	31.7	1584.4	4.8	< 1575.0	56.6	1576.0	19.3	1579.7	144.2	1582.0	0.50	1584.2
03/19/17	366.2	32.4	1586.8	108.3	1586.6	31.0	1584.4	4.1	< 1575.0	55.2	1576.0	18.6	1579.7	144.8	1581.9	2.4	1584.1
03/20/17 ⁶	373.3	32.3	1586.8	110.2	1586.6	34.8	1584.3	4.6	< 1575.0	56.7	1576.0	16.5	1579.7	142.0	1581.9	0.70	1583.9
03/21/17	367.4	32.9	1586.8	107.8	1586.6	31.5	1584.3	4.9	< 1575.0	55.3	1576.0	18.9	1579.7	143.5	1581.9	3.5	1584.1
03/22/17	366.7	32.6	1586.7	109.0	1586.6	30.6	1584.3	4.2	< 1575.0	56.3	1576.0	18.8	1579.7	143.1	1581.9	3.2	1584.2
03/23/17	366.7	33.3	1586.7	108.3	1586.5	31.3	1584.3	4.9	< 1575.0	55.6	1576.0	18.8	1579.6	143.1	1581.9	0.69	1583.8
03/24/17	367.1	33.3	1586.7	109.6	1586.5	31.2	1584.3	4.9	< 1575.0	55.5	1576.1	18.0	1579.7	143.0	1581.8	0.69	1584.0
03/25/17	365.5	32.7	1586.7	109.1	1586.5	30.6	1584.3	4.2	< 1575.0	54.9	1576.0	18.8	1579.7	143.8	1581.8	1.4	1583.9
03/26/17	366.2	32.8	1586.7	108.3	1586.5	31.4	1584.3	4.9	< 1575.0	55.9	1576.0	18.9	1579.7	143.3	1581.8	1.3	1584.1
03/27/17	350.5	32.6	1587.1	110.3	1587.1	30.5	1584.5	4.2	< 1575.0	54.8	1576.2	18.7	1579.7	128.4	NM	3.2	1584.2
03/28/17	287.3	33.3	1587.5	109.0	1587.5	32.6	1584.8	4.9	< 1575.0	55.5	1576.6	18.0	1584.2	62.5	NM	1.9	1584.2
03/29/17	303.6	33.0	1587.4	109.9	1587.2	33.7	1584.8	5.5	< 1575.0	59.1	1579.8	15.8	1584.3	87.9	1582.7	0.69	1584.2
03/30/17	313.1	28.0	NM	107.6	1587.4	28.0	< 1575.0	3.5	< 1575.0	59.4	1580.3	16.1	1584.3	109.0	1583.0	0.70	1584.0
03/31/17	314.4	26.4	1587.4	106.9	1587.2	27.8	1584.9	4.9	< 1575.0	56.9	1581.1	16.0	1584.4	110.3	1582.7	0.69	1584.3
Monthly Average	354.6	32.9	1586.9	108.8	1586.6	31.4	1584.2	4.4	< 1575.0	55.1	1576.9	18.6	1580.2	135.1	1582.1	1.4	1584.1
Analytical ¹		Conc (mg/L)	Date	Conc (mg/L)	Date	Conc (mg/L)	Date	Conc (mg/L)	Date	Conc ² (mg/L)	Date	Conc (mg/L)	Date	Conc (mg/L)	Date	Conc (mg/L)	Date
Perchlorate		16	3/20/2017	14	3/20/2017	220	3/20/2017	180	3/20/2017	250	3/20/2017	85	3/20/2017	110	3/20/2017	180	3/20/2017
Hexavalent Chromium		ND	3/20/2017	0.0030	3/20/2017	0.28	3/20/2017	0.29	3/20/2017	0.66	3/20/2017	0.47	3/20/2017	0.082	3/20/2017	0.15	3/20/2017
Total Chromium		ND	3/20/2017	0.0037 J	3/20/2017	0.32	3/20/2017	0.31	3/20/2017	0.73	3/20/2017	0.50	3/20/2017	0.086	3/20/2017	0.17	3/20/2017

- Notes:
- 1: Flow reported as gpm is a daily average calculated from the totalizer reading.
 - 2: NM = No measurement.
 - 3: ND = Not detected above laboratory method detection limit (ClO₂ = 0.5 ug/L; ClO₃ = 10 ug/L; NO₃-N = 0.055 mg/L, Cr(VI) = 0.25 ug/L).
 - 4: J = Result is less than the RL but greater than or equal to the MDL and the concentration is an approximate value. Indicates an Estimated Value for TICs.
 - 5: 1: Analytical results are reported from TestAmerica.
 - 6: 2: A "<" preceding the water elevation indicates the reported water level is below the transducer. Average monthly water elevation calculations include the transducer elevation in instances where the water level is below the transducer.
 - 7: 3: On 03/06, 03/13, and 03/20 AWF and LS #3 totalizers were reset.
 - 8: 4: On 03/12, LS #3 was down due to LS #2 maintenance from 6:15 pm to 6:40 pm.
 - 9: 5: On 03/30, flow for well ART 1A switched to backup well ART 1B due to pump problems and VFD fault. Flow switched back to ART 1B on 03/31.
 - 10: 6: On 03/12, ART 2, ART 3, ART 4, ART 7, ART 9, PC 150 off briefly from 2:48 pm to 3:09 pm due to instrument issues.
 - 11: 7: On 03/10, ART 2, ART 4, ART 7, ART 9, and PC 150 off from 12:48 pm to 1:13 pm due to instrument issues.
 - 12: 8: On 03/30, ART 2 and ART 8 off from 3:30 pm to 4:23 pm due to inclement weather.
 - 13: 9: Duplicate taken on 03/20 for well ART 9; average of both values is presented and used for calculation purposes.
 - 14: 10: On 03/27, flow for Well ART 8A switched to backup well ART 8B at 5:57 pm. Flow switched back to ART 8A on 03/29 at 1:58 pm. ART 8A pump not producing desired volume; replacement pump has been ordered.
 - 15: 11: Flow meter for PC 150 records flow in units of 1,000 gallons. Flow change of one unit (1,000 gallons per day) results in approximate change of 0.69 gpm for daily average flow.
 - 16: 12: For days flow did not register on the totalizer for well PC 150, PLC flow values were used.

Table 3 - Interceptor Well Field (IWF) Operational Metrics

Nevada Environmental Response Trust Groundwater Extraction and Treatment System Enhanced Operational Metrics																				
Date	I-AR		I-AA		I-AB		I-AC		I-AD		I-B		I-C		I-D		I-E		I-F	
	Flow (gpm)	Water Elevation ² (ft amsl)	Flow (gpm)	Water Elevation (ft amsl)	Flow (gpm)	Water Elevation (ft amsl)	Flow (gpm)	Water Elevation (ft amsl)	Flow (gpm)	Water Elevation (ft amsl)	Flow ⁵ (gpm)	Water Elevation (ft amsl)	Flow ⁵ (gpm)	Water Elevation (ft amsl)	Flow (gpm)	Water Elevation (ft amsl)	Flow (gpm)	Water Elevation (ft amsl)	Flow (gpm)	Water Elevation ² (ft amsl)
03/01/17	0.22	< 1714.00	1.1	1714.10	0.00	1721.60	0.00	1723.60	0.00	1725.20	0.98	1709.80	4.3	1717.30	2.6	1722.70	1.9	1708.40	4.4	< 1705.00
03/02/17	0.21	< 1714.00	1.3	1714.21	0.00	1721.61	0.00	1723.65	0.00	1725.18	0.99	1709.59	4.2	1717.27	2.6	1722.70	1.8	1708.37	4.3	< 1705.00
03/03/17	0.21	< 1714.00	1.2	1714.24	0.00	1721.63	0.00	1723.70	0.00	1725.20	1.0	1709.60	4.2	1717.39	2.6	1722.71	1.9	1708.37	4.3	< 1705.00
03/04/17	0.20	< 1714.00	1.2	1714.38	0.00	1721.65	0.00	1723.71	0.00	1725.22	1.1	1709.82	4.1	1717.42	2.6	1722.71	1.9	1708.38	4.4	< 1705.00
03/05/17	0.21	< 1714.00	1.2	1714.38	0.00	1721.65	0.00	1723.69	0.00	1725.21	1.3	1709.84	4.1	1717.08	2.6	1722.67	1.9	1708.37	4.5	< 1705.00
03/06/17 ³	0.20	< 1714.00	1.2	1714.33	0.00	1721.61	0.00	1723.65	0.00	1725.19	0.62	1709.61	0.62	1717.99	2.6	1722.66	1.9	1708.37	4.4	< 1705.00
03/07/17	0.21	< 1714.00	1.2	1714.35	0.00	1721.63	0.00	1723.65	0.00	1725.19	1.00	1709.80	3.9	1718.07	2.6	1722.68	1.9	1708.37	4.4	< 1705.00
03/08/17	0.21	< 1714.00	1.2	1714.53	0.00	1721.66	0.00	1723.67	0.00	1725.19	1.0	1709.73	3.9	1718.17	2.6	1722.71	1.9	1708.37	4.4	< 1705.00
03/09/17	0.21	< 1714.00	1.2	1714.65	0.00	1721.69	0.00	1723.67	0.00	1725.19	1.0	1709.83	3.9	1718.16	2.6	1722.72	1.9	1708.37	4.3	< 1705.00
03/10/17	0.21	< 1714.00	1.2	1714.85	0.00	1721.71	0.00	1723.68	0.00	1725.20	1.1	1709.61	3.9	1718.27	2.6	1722.74	1.9	1708.37	4.3	< 1705.00
03/11/17	0.20	< 1714.00	1.2	1715.06	0.00	1721.72	0.00	1723.67	0.00	1725.20	1.0	1709.99	3.8	1718.31	2.6	1722.74	1.9	1708.37	4.4	< 1705.00
03/12/17	0.19	< 1714.00	1.1	1715.30	0.00	1721.70	0.00	1723.70	0.00	1725.20	0.95	1709.70	3.7	1718.30	2.5	1722.70	1.8	1708.40	4.3	< 1705.00
03/13/17 ³	0.21	< 1714.00	1.5	1715.60	0.00	1721.80	0.00	1723.70	0.00	1725.20	0.38	1709.90	3.8	1718.50	2.6	1722.80	1.9	1708.40	4.4	< 1705.00
03/14/17	0.20	< 1714.00	1.2	1715.68	0.00	1721.76	0.00	1723.67	0.00	1725.19	0.98	1709.82	3.8	1718.56	2.5	1722.77	1.9	1708.37	4.4	< 1705.00
03/15/17	0.20	< 1714.00	1.2	1715.90	0.00	1721.78	0.00	1723.67	0.00	1725.20	0.95	1709.77	3.8	1718.61	2.6	1722.78	1.9	1708.37	4.4	< 1705.00
03/16/17	0.20	< 1714.00	1.1	1716.29	0.00	1721.79	0.00	1723.67	0.00	1725.19	0.94	1709.91	3.8	1718.66	2.6	1722.78	1.9	1708.37	4.3	< 1705.00
03/17/17	0.20	< 1714.00	1.1	1716.63	0.00	1721.73	0.00	1723.67	0.00	1725.19	0.91	1709.67	4.0	1717.12	2.5	1722.77	1.9	1708.37	4.2	< 1705.00
03/18/17	0.20	< 1714.00	1.1	1716.48	0.00	1721.67	0.00	1723.67	0.00	1725.19	0.81	1709.71	4.3	1716.91	2.6	1722.72	1.9	1708.37	4.4	< 1705.00
03/19/17	0.19	< 1714.00	1.1	1716.33	0.00	1721.65	0.00	1723.67	0.00	1725.20	0.81	1709.75	4.3	1716.88	2.6	1722.70	1.9	1708.37	4.5	< 1705.00
03/20/17 ³	0.18	< 1714.00	1.1	1716.34	0.00	1721.65	0.00	1723.68	0.00	1725.20	0.49	1709.64	4.3	1716.96	2.6	1722.69	1.9	1708.37	4.4	< 1705.00
03/21/17	0.19	< 1714.00	1.1	1716.35	0.00	1721.65	0.00	1723.68	0.00	1725.20	0.86	1709.61	4.2	1716.99	2.5	1722.67	1.9	1708.37	4.4	< 1705.00
03/22/17	0.20	< 1714.00	1.1	1716.35	0.00	1721.65	0.00	1723.69	0.00	1725.21	0.96	1709.60	4.2	1717.20	2.5	1722.65	1.9	1708.37	4.4	< 1705.00
03/23/17 ⁴	0.19	< 1714.00	1.1	1716.84	0.00	1721.63	0.01	1723.63	0.00	1725.19	0.95	1709.68	3.4	1719.96	2.5	1722.64	1.9	1708.36	4.3	< 1705.00
03/24/17	0.17	< 1714.00	1.1	1717.12	0.00	1721.66	0.00	1723.65	0.00	1725.19	0.98	1709.91	3.0	1720.28	2.5	1722.70	1.9	1708.37	4.3	< 1705.00
03/25/17	0.17	< 1714.00	1.1	1717.15	0.00	1721.67	0.00	1723.65	0.00	1725.19	0.99	1709.75	2.9	1720.49	2.5	1722.71	1.9	1708.37	4.4	< 1705.00
03/26/17	0.17	< 1714.00	1.1	1717.05	0.00	1721.68	0.00	1723.67	0.00	1725.20	0.99	1709.60	2.8	1720.59	2.5	1722.74	1.9	1708.37	4.5	< 1705.00
03/27/17	0.17	< 1714.00	1.1	1717.38	0.00	1721.68	0.00	1723.65	0.00	1725.19	1.00	1709.73	2.7	1720.64	2.5	1722.71	1.9	1708.37	4.5	< 1705.00
03/28/17	0.18	< 1714.00	1.1	1717.01	0.00	1721.68	0.00	1723.62	0.00	1725.18	1.0	1709.78	2.9	1720.70	2.5	1722.71	1.9	1708.36	4.5	< 1705.00
03/29/17	0.17	< 1714.00	1.1	1716.95	0.00	1721.69	0.00	1723.65	0.00	1725.18	1.0	1709.84	2.8	1720.79	2.4	1722.75	1.9	1708.37	4.5	< 1705.00
03/30/17	0.17	< 1714.00	1.1	1717.03	0.00	1721.69	0.00	1723.70	0.00	1725.21	1.0	1709.83	2.7	1721.03	2.3	1722.77	1.9	1708.36	4.4	< 1705.00
03/31/17	0.18	< 1714.00	1.1	1717.00	0.00	1721.69	0.00	1723.65	0.00	1725.19	1.0	1709.62	2.6	1721.12	2.3	1722.76	1.9	1708.37	4.2	< 1705.00
Monthly Average	0.19	< 1714.00	1.1	1715.80	0.00	1721.68	0.00	1723.67	0.00	1725.20	0.94	1709.74	3.6	1718.57	2.5	1722.72	1.9	1708.37	4.4	< 1705.00
Analytical ¹	Conc (mg/L)	Date	Conc (mg/L)	Date	Conc (mg/L)	Date	Conc (mg/L)	Date	Conc (mg/L)	Date	Conc (mg/L)	Date	Conc (mg/L)	Date	Conc (mg/L)	Date	Conc (mg/L)	Date	Conc (mg/L)	Date
Perchlorate	570	3/22/2017	88	3/22/2017	200	3/22/2017	250	3/23/2017	220	3/23/2017	390	3/22/2017	540	3/22/2017	540	3/22/2017	540	3/22/2017	660	3/22/2017
Hexavalent Chromium	ND	3/22/2017	0.042	3/22/2017	ND	3/22/2017	1.8	3/23/2017	0.92	3/23/2017	0.049	3/22/2017	1.9	3/22/2017	4.9	3/22/2017	5.8	3/22/2017	10	3/22/2017
Total Chromium	0.054	3/22/2017	0.048	3/22/2017	0.019	3/22/2017	1.9	3/23/2017	0.76	3/23/2017	0.061	3/22/2017	2.1	3/22/2017	5.5	3/22/2017	6.3	3/22/2017	12	3/22/2017

Notes:
 Flow reported as gpm is a daily average calculated from the totalizer reading.
 ND = Not detected above laboratory method detection limit (Cr(VI) = 1.0 ug/L).
 1: Analytical results are reported from TestAmerica.
 2: A "c" preceding the water elevation indicates the reported water level is below the transducer. Average monthly water elevation calculations include the transducer elevation in instances where the water level is below the transducer.
 3: On 03/06, 03/13, and 03/20 IWF totalizers were reset.
 4: On 03/23, IWF down briefly.
 5: On 03/17, I-B, I-C, I-L, I-M, I-R, I-X, and I-Y adjusted to meet flow target as directed by the Trust.

Nevada Environmental Response Trust Groundwater Extraction and Treatment System Enhanced Operational Metrics																				
Date	I-G		I-H		I-I		I-J		I-K		I-L		I-M		I-N		I-O		I-P	
	Flow (gpm)	Water Elevation (ft amsl)	Flow (gpm)	Water Elevation (ft amsl)	Flow (gpm)	Water Elevation (ft amsl)	Flow (gpm)	Water Elevation (ft amsl)	Flow (gpm)	Water Elevation (ft amsl)	Flow ⁵ (gpm)	Water Elevation (ft amsl)	Flow ⁵ (gpm)	Water Elevation (ft amsl)	Flow (gpm)	Water Elevation (ft amsl)	Flow (gpm)	Water Elevation (ft amsl)	Flow (gpm)	Water Elevation (ft amsl)
03/01/17	0.18	1718.00	1.6	1709.20	5.0	1721.90	6.7	1707.10	3.5	1712.50	1.4	1720.90	1.3	1714.30	4.5	1719.80	0.16	1721.90	1.8	1721.10
03/02/17	0.18	1717.81	1.6	1709.20	5.0	1721.97	6.7	1707.08	3.5	1712.53	1.3	1721.00	1.3	1722.92	4.5	1719.81	0.16	1721.92	1.8	1721.11
03/03/17	0.18	1717.79	1.6	1709.19	5.0	1722.00	6.7	1707.08	3.5	1712.67	1.3	1721.11	1.3	1722.92	4.5	1719.83	0.16	1721.95	1.8	1721.14
03/04/17	0.18	1717.79	1.6	1709.27	4.9	1722.02	6.8	1707.08	3.5	1712.75	1.3	1721.07	1.3	1714.24	4.5	1719.84	0.16	1721.97	1.8	1721.17
03/05/17	0.18	1717.79	1.6	1709.11	4.9	1722.00	6.8	1707.08	3.5	1712.70	1.3	1721.14	1.3	1714.21	4.5	1719.82	0.16	1721.96	1.8	1721.17
03/06/17 ³	0.12	1717.75	3.3	1709.15	5.1	1721.97	6.5	1707.08	3.5	1712.50	1.3	1721.02	1.3	1714.25	4.5	1719.83	0.15	1721.94	1.7	1721.16
03/07/17	0.18	1717.28	1.6	1709.05	5.0	1721.98	6.7	1707.09	3.5	1712.48	1.3	1721.19	1.3	1714.32	4.5	1719.86	0.17	1721.95	1.8	1721.18
03/08/17	0.18	1717.25	1.6	1709.19	5.0	1722.00	6.7	1707.08	3.5	1712.54	1.3	1721.30	1.2	1714.39	4.5	1719.89	0.16	1721.96	1.7	1721.20
03/09/17	0.16	1717.23	1.5	1709.03	5.0	1722.01	6.7	1707.08	3.5	1712.54	1.3	1721.35	1.2	1714.43	4.5	1719.91	0.17	1722.00	1.7	1721.24
03/10/17	0.21	1717.24	1.6	1709.16	5.0	1722.03	6.8	1707.08	3.5	1712.61	1.3	1721.38	1.2	1714.49	4.5	1719.93	0.17	1721.99	1.8	1721.24
03/11/17	0.19	1717.26	1.5	1709.22	4.9	1722.02	6.8	1707.08	3.5	1712.56	1.3	1721.42	1.2	1714.51	4.5	1719.94	0.16	1721.99	1.7	1721.24
03/12/17	0.18	1717.30	1.5	1709.20	4.7	1722.00	6.5	1707.10	3.4	1712.50	1.2	1721.50	1.2	1714.50	4.3	1719.90	0.17	1722.00	1.7	1721.30
03/13/17 ³	0.23	1717.30	3.1	1709.20	5.0	1722.00	6.6	1707.10	3.5	1712.50	1.3	1721.50	1.3	1723.00	4.5	1720.00	0.17	1722.00	1.7	1721.30
03/14/17	0.19	1717.35	1.5	1709.26	5.0	1722.03	6.7	1707.09	3.5	1712.57	1.3	1721.55	1.3	1714.35	4.5	1719.99	0.16	1722.01	1.0	1721.31
03/15/17	0.19	1717.36	1.6	1709.28	5.0	1722.03	6.7	1707.08	3.5	1712.50	1.2	1721.65	1.3	1714.35	4.5	1720.00	0.16	1722.00	2.4	1721.31
03/16/17	0.19	1717.39	1.5	1709.19	5.0	1722.02	6.7	1707.09	3.5	1712.48	1.2	1721.70	1.3	1714.35	4.5	1720.01	0.17	1722.00	1.6	1721.31
03/17/17	0.19	1717.56	1.5	1709.21	4.9	1722.06	6.6	1707.09	3.4	1712.65	1.6	1717.73	1.4	1711.95	4.4	1720.00	0.17	1722.08	1.6	1721.43
03/18/17	0.19	1717.50	1.5	1709.31	4.9	1722.07	6.8	1707.09	3.5	1712.61	1.8	1718.01	1.4	1711.92	4.5	1719.98	0.16	1722.11	1.6	1721.47
03/19/17	0.20	1717.77	1.6	1709.25	4.9	1722.08	6.8	1707.10	3.5	1712.58	1.7	1718.19	1.4	1711.95	4.5	1719.98	0.17	1722.12	1.6	1721.50
03/20/17 ³	0.23	1718.05	1.2	1709.15	5.0	1722.10	6.6	1707.10	3.5	1712.75	1.7	1718.50	1.4	1714.28	4.5	1719.99	0.18	1722.13	1.6	1721.53
03/21/17	0.20	1718.20	1.5	1709.25	5.0	1722.11	6.8	1707.09	3.5	1712.76	1.6	1718.65	1.4	1714.30	4.5	1719.98	0.18	1722.14	1.6	1721.54
03/22/17	0.20	1718.29	1.7	1709.19	5.0	1722.12	6.8	1707.08	3.5	1712.80	1.8	1713.37	1.5	1722.62	4.5	1719.92	0.19	1722.15	1.6	1721.57
03/23/17 ⁴	0.20	1718.34	1.7	1709.32	5.0	1722.08	6.8	1707.08	3.5	1711.90	1.7	1718.97	1.5	1722.78	4.4	1719.84	0.18	1722.08	1.6	1721.51
03/24/17	0.20	1717.35	1.7	1709.14	5.0	1722.08	6.8	1707.09	3.5	1711.87	1.5	1719.28	1.4	1714.25	4.5	1719.83	0.18	1722.08	1.5	1721.51
03/25/17	0.20	1717.28	1.7	1709.20	4.9	1722.07	6.8	1707.09	3.5	1711.85	1.5	1719.18	1.3	1714.22	4.5	1719.81	0.18	1722.06	1.6	1721.48
03/26/17	0.20	1717.30	1.7	1709.07	4.9	1722.08	6.8	1707.09	3.5	1711.91	1.6	1719.32	1.3	1714.26	4.5	1719.82	0.17	1722.08	1.5	1721.50
03/27/17	0.20	1717.28	1.7	1709.31	4.9	1722.06	6.7	1707.08	3.5	1711.81	1.5	1719.52	1.3	1714.24	4.5	1719.80	0.15	1722.06	1.5	1721.49
03/28/17	0.20	1716.98	1.7	1709.16	4.9	1722.04	6.6	1707.08	3.5	1711.71	1.5	1719.62	1.3	1714.26	4.5	1719.79	0.17	1722.04	1.5	1721.48
03/29/17	0.20	1716.45	1.7	1709.08	5.0	1722.06	6.6	1707.09	3.5	1711.75	1.5	1719.78	1.3	1714.31	4.5	1719.82	0.17	1722.06	1.5	1721.50
03/30/17	0.20	1716.44	1.7	1709.02	5.2	1722.10	6.7	1707.07	3.5	1711.89	1.5	1719.61	1.3	1714.37	4.4	1719.91	0.17	1722.13	1.5	1721.59
03/31/17	0.20	1716.39	1.7	1709.30	5.2	1722.08	6.7	1707.08	3.5	1711.74	1.5	1719.70	1.2	1714.37	4.2	1719.97	0.18	1722.13	1.5	1721.60
Monthly Average	0.19	1717.45	1.7	1709.19	5.0	1722.04	6.7	1707.09	3.5	1712.37	1.5	1720.01	1.3	1715.47	4.4	1719.90	0.17	1722.03	1.6	1721.36
Analytical ¹	Conc (mg/L)	Date	Conc (mg/L)	Date	Conc (mg/L)	Date	Conc (mg/L)	Date	Conc (mg/L)	Date	Conc (mg/L)	Date	Conc (mg/L)	Date	Conc (mg/L)	Date	Conc (mg/L)	Date	Conc (mg/L)	Date
Perchlorate	1,500	3/22/2017	1,200	3/22/2017	870	3/23/2017	290	3/23/2017	230	3/23/2017	630	3/22/2017	480	3/22/2017	450	3/22/2017	960	3/22/2017	1,000	3/22/2017
Hexavalent Chromium	19	3/22/2017	17	3/22/2017	11	3/23/2017	3.4	3/23/2017	1.9	3/23/2017	0.22	3/22/2017	5.7	3/22/2017	5.3	3/22/2017	16	3/22/2017	17	3/22/2017
Total Chromium	22	3/22/2017	18	3/22/2017	12	3/23/2017	3.8	3/23/2017	2.0	3/23/2017	0.23	3/22/2017	5.9	3/22/2017	6.6	3/22/2017	19	3/22/2017	19	3/22/2017

Notes:
 Flow reported as gpm is a daily average calculated from the totalizer reading.
 ND = Not detected above laboratory method detection limit (ClO₄ = 0.5 ug/L; ClO₃ = 10 ug/L; NO₃-N= 0.055 mg/L, Cr(VI) = 0.25 ug/L).
 1: Analytical results are reported from TestAmerica.
 2: A "e" preceding the water elevation indicates the reported water level is below the transducer. Average monthly water elevation calculations include the transducer elevation in instances where the water level is below the transducer.
 3: On 03/06, 03/13, and 03/20 IWF totalizers were reset.
 4: On 03/23, IWF down briefly.
 5: On 03/17, I-B, I-C, I-L, I-M, I-R, I-X, and I-Y adjusted to meet flow target as directed by the Trust.

Table 3 - Interceptor Well Field (IWF) Operational Metrics

Nevada Environmental Response Trust Groundwater Extraction and Treatment System Enhanced Operational Metrics																				
Date	I-Q		I-R		I-S		I-T		I-U		I-V		I-W		I-X		I-Y		I-Z	
	Flow (gpm)	Water Elevation (ft amsl)	Flow ⁵ (gpm)	Water Elevation ² (ft amsl)	Flow (gpm)	Water Elevation ² (ft amsl)	Flow (gpm)	Water Elevation ² (ft amsl)	Flow (gpm)	Water Elevation (ft amsl)	Flow (gpm)	Water Elevation (ft amsl)	Flow ⁶ (gpm)	Water Elevation (ft amsl)	Flow ⁵ (gpm)	Water Elevation (ft amsl)	Flow ⁵ (gpm)	Water Elevation (ft amsl)	Flow (gpm)	Water Elevation (ft amsl)
03/01/17	0.76	1711.60	1.1	< 1707.00	5.4	< 1710.00	0.52	< 1705.00	0.89	1707.10	4.4	1719.70	0.74	1719.60	1.1	1716.70	1.7	1714.80	7.9	1711.70
03/02/17	0.76	1711.62	1.1	< 1707.00	5.4	< 1710.00	0.52	< 1705.00	0.90	1707.15	4.4	1719.76	0.75	1719.58	2.6	1716.81	1.5	1716.08	7.8	1711.86
03/03/17	0.76	1711.62	0.98	< 1707.00	5.4	< 1710.00	0.53	< 1705.00	0.91	1707.15	4.4	1719.80	0.76	1719.67	1.6	1716.85	1.3	1717.10	7.8	1711.98
03/04/17	0.76	1711.62	0.95	< 1707.00	5.4	< 1710.00	0.53	< 1705.00	0.91	1707.15	4.4	1719.83	0.78	1719.65	1.6	1716.86	1.3	1717.21	7.9	1712.05
03/05/17	0.76	1711.62	0.87	< 1707.00	5.4	< 1710.00	0.53	< 1705.00	0.90	1707.15	4.5	1719.81	0.77	1719.66	1.6	1716.98	1.2	1717.50	8.0	1711.95
03/06/17 ³	0.77	1711.62	1.5	< 1707.00	5.5	< 1710.00	0.54	< 1705.00	0.90	1707.15	4.4	1719.77	0.78	1719.63	3.1	1717.08	1.1	1718.19	7.9	1711.78
03/07/17	0.77	1711.62	1.2	< 1707.00	5.4	< 1710.00	0.53	< 1705.00	0.90	1707.15	4.4	1719.78	0.77	1719.65	1.6	1717.16	1.0	1718.43	7.9	1711.80
03/08/17	0.77	1711.62	0.89	< 1707.00	5.4	< 1710.00	0.53	< 1705.00	0.90	1707.15	4.4	1719.81	0.78	1719.62	1.5	1717.30	1.0	1718.66	7.8	1711.88
03/09/17	0.77	1711.62	0.79	< 1707.00	5.4	< 1710.00	0.53	< 1705.00	0.90	1707.16	4.4	1719.82	0.78	1721.66	1.5	1717.36	0.99	1718.80	7.9	1711.86
03/10/17	0.77	1711.63	0.76	< 1707.00	5.4	< 1710.00	0.53	< 1705.00	0.90	1707.16	4.4	1719.84	0.76	1719.75	1.5	1717.49	1.0	1718.82	7.9	1711.90
03/11/17	0.77	1711.63	0.70	< 1707.00	5.4	< 1710.00	0.53	< 1705.00	0.90	1707.16	4.4	1719.83	0.77	1719.72	1.4	1717.54	0.98	1719.01	7.9	1711.85
03/12/17	0.74	1711.60	0.62	< 1707.00	5.2	< 1710.00	0.51	< 1705.00	0.86	1707.20	4.3	1719.80	0.74	1719.70	1.3	1717.60	0.93	1719.10	7.6	1711.80
03/13/17 ³	0.80	1711.60	0.63	< 1707.00	5.5	< 1710.00	0.53	< 1705.00	0.92	1707.10	4.4	1719.80	0.76	1719.70	2.8	1717.60	0.87	1719.70	7.9	1711.90
03/14/17	0.78	1711.63	0.59	< 1707.00	5.5	< 1710.00	0.53	< 1705.00	0.90	1707.15	4.4	1719.86	0.68	1719.71	1.4	1717.63	0.83	1719.93	7.8	1711.90
03/15/17	0.78	1711.63	0.60	< 1707.00	5.5	< 1710.00	0.53	< 1705.00	0.91	1707.16	4.4	1719.84	0.83	1719.55	1.4	1717.63	0.79	1720.01	7.9	1711.78
03/16/17	0.78	1711.63	0.57	< 1707.00	5.5	< 1710.00	0.53	< 1705.00	0.91	1707.16	4.4	1719.84	0.86	1719.52	1.4	1717.65	0.74	1720.39	7.9	1711.72
03/17/17	0.78	1711.63	1.0	< 1707.00	5.5	< 1710.00	0.53	< 1705.00	0.89	1707.16	4.3	1719.92	0.63	1721.22	1.6	1717.04	1.4	1707.66	7.8	1712.22
03/18/17	0.79	1711.63	1.1	< 1707.00	5.4	< 1710.00	0.53	< 1705.00	0.90	1707.18	4.4	1719.95	0.29	1721.18	1.6	1717.14	1.8	1714.02	8.0	1712.06
03/19/17	0.79	1711.63	0.88	< 1707.00	5.4	< 1710.00	0.53	< 1705.00	0.90	1707.42	4.5	1719.96	0.31	1721.18	1.6	1717.19	1.6	1715.43	8.0	1712.02
03/20/17 ³	0.80	1711.63	0.79	< 1707.00	5.4	< 1710.00	0.53	< 1705.00	0.94	1707.37	4.4	1720.01	0.33	1721.19	3.2	1717.23	1.5	1716.01	7.9	1712.20
03/21/17	0.79	1711.62	0.78	< 1707.00	5.4	< 1710.00	0.54	< 1705.00	0.90	1708.53	4.4	1720.02	0.32	1721.19	1.6	1717.28	1.4	1716.25	7.9	1712.18
03/22/17	0.79	1711.62	1.1	< 1707.00	5.4	< 1710.00	0.54	< 1705.00	0.87	1708.93	4.4	1720.04	0.32	1721.19	1.7	1715.76	1.6	1705.01	7.9	1712.21
03/23/17 ⁴	0.78	1711.62	0.80	< 1707.00	5.4	< 1710.00	0.54	< 1705.00	0.87	1708.70	4.3	1719.99	0.45	1719.48	1.9	1716.09	1.8	1713.93	7.9	1712.60
03/24/17	0.77	1711.62	0.50	< 1707.00	5.4	< 1710.00	0.54	< 1705.00	0.88	1708.08	4.3	1719.99	0.91	1719.52	1.9	1716.19	1.7	1714.55	7.9	1712.45
03/25/17	0.77	1711.62	0.52	< 1707.00	5.4	< 1710.00	0.54	< 1705.00	0.87	1708.70	4.4	1719.96	0.90	1719.49	1.9	1716.17	1.6	1715.01	7.9	1712.40
03/26/17	0.77	1711.62	0.50	< 1707.00	5.4	< 1710.00	0.54	< 1705.00	0.87	1709.08	4.5	1719.98	0.89	1719.53	1.9	1716.22	1.6	1715.15	8.0	1712.40
03/27/17	0.77	1711.61	0.44	< 1707.00	5.4	< 1710.00	0.54	< 1705.00	0.88	1709.12	4.5	1719.95	0.86	1719.65	1.9	1716.23	1.5	1716.26	8.0	1712.32
03/28/17	0.76	1711.61	0.43	< 1707.00	5.4	< 1710.00	0.54	< 1705.00	0.86	1709.30	4.5	1719.93	0.85	1719.62	1.9	1716.28	1.4	1716.33	8.0	1712.20
03/29/17	0.76	1711.61	0.42	< 1707.00	5.2	< 1710.00	0.54	< 1705.00	0.83	1709.45	4.5	1719.96	0.82	1719.70	1.8	1716.40	1.4	1716.23	8.0	1712.26
03/30/17	0.76	1711.60	0.42	< 1707.00	5.2	< 1710.00	0.54	< 1705.00	0.83	1709.97	4.4	1720.04	0.70	1720.85	1.6	1717.68	1.4	1716.94	8.0	1712.38
03/31/17	0.76	1711.61	0.43	< 1707.00	5.2	< 1710.00	0.53	< 1705.00	0.82	1709.90	4.2	1720.02	0.47	1720.78	1.3	1717.82	1.2	1717.63	7.9	1712.28
Monthly Average	0.77	1711.62	0.78	< 1707.00	5.4	< 1710.00	0.53	< 1705.00	0.89	1707.85	4.4	1719.89	0.69	1720.07	1.8	1717.00	1.3	1716.46	7.9	1712.06
Analytical ¹	Conc (mg/L)	Date	Conc (mg/L)	Date	Conc (mg/L)	Date	Conc (mg/L)	Date	Conc (mg/L)	Date	Conc (mg/L)	Date	Conc (mg/L)	Date	Conc (mg/L)	Date	Conc (mg/L)	Date	Conc (mg/L)	Date
Perchlorate	980	3/22/2017	1,000	3/22/2017	490	3/22/2017	1,500	3/22/2017	1,700	3/22/2017	850	3/23/2017	820	3/22/2017	950	3/22/2017	1,500	3/22/2017	450	3/23/2017
Hexavalent Chromium	19	3/22/2017	0.13	3/22/2017	0.43	3/22/2017	19	3/22/2017	19	3/22/2017	15	3/23/2017	17	3/22/2017	7.2	3/22/2017	0.18	3/22/2017	8.7	3/23/2017
Total Chromium	20	3/22/2017	0.15	3/22/2017	0.47	3/22/2017	24	3/22/2017	22	3/22/2017	16	3/23/2017	19	3/22/2017	8.5	3/22/2017	0.22	3/22/2017	8.5	3/23/2017

Notes:
 Flow reported as gpm is a daily average calculated from the totalizer reading.
 ND = Not detected above laboratory method detection limit (ClO₄ = 0.5 ug/L; ClO₃ = 10 ug/L; NO₃-N = 0.055 mg/L, Cr(VI) = 0.25 ug/L).
 1: Analytical results are reported from TestAmerica.
 2: A "<" preceding the water elevation indicates the reported water level is below the transducer. Average monthly water elevation calculations include the transducer elevation in instances where the water level is below the transducer.
 3: On 03/06, 03/13, and 03/20 IWF totalizers were reset.
 4: On 03/23, IWF down briefly.
 5: On 03/17, I-B, I-C, I-L, I-M, I-R, I-X, and I-Y adjusted to meet flow target as directed by the Trust.
 6: On 03/09 and 03/15, I-W was reset.
 7: Duplicate taken on 03/22 for well I-X; average of both values is presented and used for calculation purposes.

Table 4 - Treatment Plant Operational Metrics

Nevada Environmental Response Trust Groundwater Extraction and Treatment System Enhanced Operational Metrics																	
Date	LS #2	GWTP Effluent				GW-11 Influent				FBR Plant Influent ¹							
	Flow ⁵ (gpm)	Flow ⁵ (gpm)	TA - Cr (TR) (mg/L)	TA - Cr (VI) (mg/L)	TA - ClO ₄ (mg/L)	Flow ⁶ (gpm)	Cr (TR) (mg/L)	Cr (VI) (mg/L)	ClO ₄ (mg/L)	Flow ^{6,7,8} (gpm)	TA - ClO ₄ (mg/L)	ETI - ClO ₄ (mg/L)	TA - ClO ₃ (mg/L)	TA - SO ₄ ⁹ (mg/L)	TA - NO ₃ - N (mg/L)	TA - Cr (TR) (mg/L)	TA - Cr (VI) (mg/L)
03/01/17	827.5	83.5				0.00				952.1		111.00					
03/02/17	833.3	82.4	0.97	ND	790	0.00				987.8		95.00					
03/03/17	861.9	83.3				0.00				974.3		91.00					
03/04/17	824.4	82.2				0.00				946.6	92	91.00					
03/05/17	825.8	82.1				0.00				944.0		90.00					
03/06/17 ³	857.9	82.7				0.00				987.6		89.80	180	NA	12	0.062	0.052
03/07/17	827.1	81.7				0.00				970.7		90.00					
03/08/17	826.9	82.6				0.00				985.8		89.00					
03/09/17	826.3	77.8				0.00				944.0		94.00					
03/10/17	816.4	79.1				0.00				951.4		96.00					
03/11/17	814.5	80.1				0.00				941.8	120	90.00					
03/12/17	787.5	76.6				0.00				916.3		88.00					
03/13/17	719.2	79.5				0.00				859.5		88.00			12 H	0.029	0.0050 H
03/14/17	731.8	79.6				0.00				857.8		86.30					
03/15/17	804.9	79.7				0.00				939.0		91.00					
03/16/17	682.8	78.4	0.26 B	ND	690	0.00				815.7		91.00					
03/17/17	597.2	81.4				0.00				741.0		89.00					
03/18/17	729.5	82.9				0.00				839.9	100	81.00					
03/19/17	629.0	82.7				0.00				764.1		86.00					
03/20/17 ³	1066.7	81.7				0.00				1,203.7		94.00					
03/21/17	852.3	76.9				0.00				990.4		86.00			11	0.011	0.0054
03/22/17	870.1	80.6				0.00				979.7		88.00					
03/23/17	870.8	81.1	0.13	ND	880	3.6	0.11	0.00090 J	93	1,005.4		89.00					
03/24/17	870.2	80.9				0.00				993.5		93.00					
03/25/17	869.4	80.2				0.00				977.1	97	91.00					
03/26/17	868.6	80.0				0.00				999.6		84.41					
03/27/17	853.6	79.6				0.00				988.7		76.89			11	0.045	0.027
03/28/17	784.9	79.3				0.00				1,009.4		93.23					
03/29/17	690.2	79.5				0.00				1,063.0		84.08					
03/30/17	823.2	76.3	0.94	ND	690	102				973.8		82.00					
03/31/17	811.9	76.2				0.00				986.4		86.00					
Monthly Average ²	808.3	80.2	0.57	ND	766	3.4	0.11	0.00090	93	951.3	102	89.57	180	NA	12	0.039	0.025

Notes:

- Flow reported as gpm is a daily average calculated from the totalizer reading.
- NA = Not Analyzed; ND = Not detected above laboratory method detection limit (ClO₄ = 0.5 ug/L; ClO₃ = 10 ug/L; NO₃-N = 0.055 mg/L, Cr(VI) = 0.25 ug/L).
- B = Compound was found in the blank and sample.
- H = Sample was prepped or analyzed beyond the specified holding time
- J = Result is less than the RL but greater than or equal to the MDL and the concentration is an approximate value. Indicates an Estimated Value for TICs.
- 1: ETI = Envirogen internal process control data, TA = TestAmerica data.
- 2: All average concentrations reported are monthly flow weighted averages.
- 3: On 03/06 and 03/20, LS #2 totalizer was reset.
- 4: From 03/13 to 03/15, LS #2 off intermittently due to instrument error and maintenance.
- 5: On 03/30, LS #2 and GWTP flow directed to GW-11 from 8:13 am to 11:10 am during the tie in for the AP-5 treatment system and FBR Plant maintenance.
- 6: Flows bypassed GW-11 Influent and FBR Plant Influent totalizers from 03/01 to 03/31 due to FBR plant influent strainers clogging.
- 7: From 03/01 to 03/31, FBR Plant Influent flow estimated by summing LS #2, GWTP, and FBR Plant Influent totalizers.
- 8: On 03/29, FBR Plant in recycle from 11:46 am to 3:49 pm. FBR Plant Influent flow was estimated by using 1st Stage FBR Influent Flow.
- 9: Sulfate is not required for permitting. Therefore, sulfate was not analyzed and will not be included in future tables.

Table 4 - Treatment Plant Operational Metrics

Nevada Environmental Response Trust Groundwater Extraction and Treatment System Enhanced Operational Metrics															
Date	1st Stage FBR Influent			2nd Stage FBR Influent			FBR Plant Effluent ^{1 10}								
	Flow (gpm)	pH (s.u.)	ORP (mV)	Flow (gpm)	pH (s.u.)	ORP (mV)	Flow (gpm)	TA - ClO ₄ (mg/L)	ETI - ClO ₂ (mg/L)	TA - ClO ₃ (mg/L)	TA - Cr (TR) (mg/L)	TA - Cr (VI) (mg/L)	TA - SO ₄ ⁹ (mg/L)	TA - NO ₃ - N (mg/L)	ETI - Turbidity (NTU)
03/01/17	1,062.1	7.1	-313	904.7	6.7	-395	964.3		ND						8
03/02/17	1,043.2	7.0	-325	885.3	6.7	-380	1,001.2		ND						37
03/03/17	1,065.8	7.1	-322	1,000.4	6.7	-390	987.3		ND						24
03/04/17	1,027.8	7.0	-308	927.3	6.7	-398	972.7	ND	ND						21
03/05/17	1,059.2	7.0	-322	860.4	6.7	-402	963.3		ND						30
03/06/17	1,036.4	7.0	-314	823.4	6.7	-400	980.2		ND	ND		0.012	ND	NA	22
03/07/17	1,104.9	7.0	-318	949.4	6.7	-402	888.1		ND						13
03/08/17	1,045.0	6.9	-337	956.9	6.7	-403	992.9		ND						11
03/09/17	1,047.9	6.9	-345	913.6	6.7	-403	968.6		ND						7
03/10/17	1,038.4	6.8	-346	824.1	6.7	-404	983.0		ND						8
03/11/17	1,069.6	7.5	-338	907.5	6.7	-405	967.0	ND	ND						14
03/12/17	1,082.5	7.4	-343	800.5	6.6	-404	925.2		ND						18
03/13/17	1,035.7	7.4	-336	732.6	6.6	-404	983.3		ND		0.0091 J	ND	H		17
03/14/17	1,047.2	7.4	-350	846.9	6.6	-406	976.6		ND						14
03/15/17	1,052.7	7.7	-334	857.9	6.6	-406	971.1		ND						15
03/16/17	1,039.0	7.8	-350	832.0	6.7	-407	982.2		ND						8
03/17/17	1,040.9	7.6	-344	646.0	6.6	-407	963.6		ND						19
03/18/17	1,021.4	7.6	-339	768.5	6.7	-408	965.6	ND	ND						12
03/19/17	1,077.1	7.5	-350	977.3	6.7	-409	974.0		ND						14
03/20/17	1,057.2	7.5	-358	611.0	6.7	-409	991.5		ND		0.0087	ND		ND	22
03/21/17	1,066.7	7.4	-362	769.5	6.7	-397	977.1		ND						22
03/22/17	1,037.7	7.4	-354	842.1	6.7	-397	961.4		ND						8
03/23/17	1,024.2	7.3	-368	931.4	6.7	-400	970.7		ND						8
03/24/17	1,082.0	7.4	-319	908.4	6.7	-400	967.0		ND						8
03/25/17	1,056.2	7.3	-296	933.9	6.6	-401	961.1	ND	ND						5
03/26/17	1,030.1	7.4	-306	943.4	6.6	-401	971.1		ND						11
03/27/17	1,059.8	7.3	-280	914.9	6.7	-402	967.2		ND		0.0085 J	ND		ND	18
03/28/17	1,043.8	7.3	-214	915.0	6.7	-400	987.3		ND						14
03/29/17	1,063.0	7.4	-330	1,024.4	6.7	-386	821.4		ND						14
03/30/17 ⁴	1,083.5	7.3	-277	886.3	6.7	-399	839.3		ND						10
03/31/17	1,056.0	7.3	-337	920.9	6.7	-402	962.4		ND						8
Monthly Average ²	1,053.5	7.3	-327	871.5	6.7	-401	960.9	ND	ND	ND	0.0077	ND	NA	ND	15

Notes:

Flow reported as gpm is a daily average calculated from the totalizer reading.

NA = Not Analyzed; ND = Not detected above laboratory method detection limit (ClO₄ = 0.5 ug/L; ClO₃ = 10 ug/L; NO₃-N = 0.055 mg/L, Cr(VI) = 0.25 ug/L).

H= Sample was prepped or analyzed beyond the specified holding time

J = Result is less than the reporting limit but greater than or equal to the method detection limit and the concentration is an approximate value.

1: ETI = Envirogen internal process control data, TA = TestAmerica data.

2: All average concentrations reported are monthly flow weighted averages.

9: Sulfate is not required for permitting. Therefore, sulfate was not analyzed and will not be included in future tables.

10: FBR Plant Effluent represents effluent discharged to Las Vegas Wash. While this may represent the entirety of the FBR Plant effluent, any diversions to GW-11 are subtracted from the original effluent flow.

GW-11 Level Monitoring		
Date	Field Measurement (ft)	Volume (MG)
3/14/2017	17.2	53.9
3/28/2017	19.0	51.4

GW-11 Leak Detection Monitoring				
Date	Amount Pumped ¹ (gallons)			
	NW Corner	NE Corner	SW Corner	SE Corner
3/17/2017	0	2	0	0
3/30/2017	0	0	0	0

GW-11 Composite Sample ²		
Analytes	Concentration	Units
Perchlorate	74	mg/L
Chlorate	130	mg/L
Ammonia as N	0.36	mg/L
Total Phosphorus	0.035 J	mg/L
Total Dissolved Solids (TDS)	6,100	mg/L
Total Suspended Solids (TSS)	37	mg/L
pH	8.3	s.u.
Calcium	300	mg/L
Iron	0.15	mg/L
Chromium (total)	0.051	mg/L
Chromium VI	0.033	mg/L
Chloride	1,600	mg/L
Nitrate as N	6.3	mg/L
Sulfate	1,500	mg/L

Notes:

ND = Not detected above laboratory method detection limit (NH₃-N= 0.1 mg/L; Total P = 0.025 ug/L; Cr(VI) = 0.25 ug/L).

J= Result is less than the RL but greater than or equal to the MDL and the concentration is an approximate value. Indicates an Estimated Value for TICs.

1: Pumping occurs over three consecutive days. The total amount pumped over the three day period is listed with the last day pumping occurred.

2: Corner Composite Sample collected quarterly, most recent sampling results presented. Sampled on: February 14, 2017 by Envirogen.

Nevada Environmental Response Trust Groundwater Extraction and Treatment System Enhanced Operational Metrics						
Date	Flow ¹ (gpm)	FBR Influent Concentration			Influent Function Load ² (lbs/day)	6 Month Rolling Average (lbs/day)
		ClO ₄ (mg/L)	NO ₃ as N (mg/L)	ClO ₃ (mg/L)		
April 2016	944	84	9.0	160	572	595
May 2016	976	98	9.0	230	760	639
June 2016	902	75	9.3	130	476	629
July 2016	878	86	11	140	519	626
Aug 2016	901	80	9.2	180	577	581
Sep 2016	843	78	7.7	150	470	562
Oct 2016	860	86	8.6	190	573	563
Nov 2016	935	85	7.1	120	473	515
Dec 2016	979	96	9.0	170	638	542
Jan 2017	1,005	100	9.9	170	675	568
Feb 2017	1,017	103	11	170	697	588
Mar 2017	951	102	12	180	677	600

Notes:

Concentrations and flow are presented as monthly average.

1: Flow used in loading calculation is average monthly FBR effluent flow to be consistent with historical loading calculations.

2: FBR loading calculated as $[(0.9 \times \text{NO}_3 \text{ as N} + 0.17 \times \text{ClO}_3 + 0.18 \times \text{ClO}_4) \times \text{Flow} \times 1440 / 1000000 \times 8.34]$.

Nevada Environmental Response Trust Groundwater Extraction and Treatment System Enhanced Operational Metrics																
Date	E1-1				E1-2				E1-3				E2-1 ⁶			
	Flow (gpm)	Water Elevation (ft amsl)	Cr (VI) ³ (mg/L)	ClO ₂ ³ (mg/L)	Flow (gpm)	Water Elevation (ft amsl)	Cr (VI) ⁴ (mg/L)	ClO ₂ ⁴ (mg/L)	Flow (gpm)	Water Elevation (ft amsl)	Cr (VI) ⁵ (mg/L)	ClO ₂ ⁵ (mg/L)	Flow (gpm)	Water Elevation (ft amsl)	Cr (VI) ¹ (mg/L)	ClO ₂ ¹ (mg/L)
03/01/17	3.2	1,713.96			1.2	1,713.47			0.98	1,710.96			0.00			
03/02/17	3.2	1,714.48	0.023	1,100	1.2	1,712.26	0.033	2,750	1.0	1,710.96	0.080	1,600	0.00			
03/03/17	3.3	1,711.67			1.2	1,714.21			1.0	1,710.97			0.00			
03/04/17	3.3				1.2				1.0				0.00			
03/05/17	3.3				1.2				1.0				0.00			
03/06/17	3.2	1,711.67	0.020	930	1.2	1,713.92	0.028	2,000	1.0	1,710.98	0.073	1,450	0.00			
03/07/17	3.2	1,711.71			1.2	1,713.96			1.0	1,710.97			0.00			
03/08/17	4.0	1,711.67			1.5	1,712.38			1.2	1,710.97			0.00			
03/09/17	2.4	1,711.77			0.75	1,710.16			0.76	1,710.97			0.00			
03/10/17	3.2	1,711.82			1.1	1,714.08			0.96	1,710.97			0.00			
03/11/17	3.2				1.1				0.96				0.00			
03/12/17	3.2				1.1				0.96				0.00			
03/13/17	3.3	1,711.72	0.023 H	905	1.1	1,715.60	0.029 H	2,000	1.0	1,710.96	0.076 H	1,400	0.00			
03/14/17	3.3	1,712.13			1.2	1,717.41			0.98	1,710.98			0.00			
03/15/17	3.3	1,712.39			1.4	1,718.13			0.98	1,710.97			0.00			
03/16/17	3.4	1,711.67			1.2	1,711.46			1.0	1,710.96			0.00			
03/17/17	3.3	1,711.69			1.2	1,716.44			0.99	1,710.96			0.00			
03/18/17	3.3				1.2				0.99				0.00			
03/19/17	3.3				1.2				0.99				0.00			
03/20/17	3.0	1,711.67	0.023	990	0.98	1,718.78	0.026	1,400	0.88	1,710.96	0.083	1,200	0.00			
03/21/17	3.2	1,711.67			1.0	1,720.32			0.96	1,710.97			0.00			
03/22/17	3.6	1,711.68			1.1	1,720.61			1.1	1,710.95			0.00			
03/23/17	3.4	1,711.66			1.0	1,719.48			1.0	1,710.99			0.00			
03/24/17	3.1	1,711.68			0.96	1,718.24			0.93	1,710.98			0.00			
03/25/17	3.1				0.96				0.93				0.00			
03/26/17	3.1				0.96				0.93				0.00			
03/27/17	3.5	1,711.68	0.024	780	1.2	1,716.48	0.034	1,700	1.0	1,710.96	0.084	1,200	0.00			
03/28/17	3.1	1,711.67			1.0	1,715.96			0.91	1,710.96			0.00			
03/29/17	3.1	1711.70			1.1	1715.51			0.90	1710.97			0.00			
03/30/17	3.0	1711.68			1.0	1716.44			0.89	1710.97			0.00			
03/31/17	3.2	1711.67			1.2	1718.37			0.95	1710.97			0.00			
Monthly Average ²	3.2	1711.96	0.023	922	1.1	1715.81	0.030	1,900	0.98	1710.97	0.080	1,339	0.00			

Notes:
 Flow reported as gpm is a daily average calculated from the totalizer reading. *Italicized* flow rates indicate a totalizer reading was not recorded that day.
 H= Sample was prepped or analyzed beyond the specified holding time
 1: Analytical results are reported from TestAmerica.
 2: All average concentrations reported are monthly flow weighted averages.
 3: Duplicates taken on 03/13 and 03/20 for well E1-1; average of both values is presented and used for calculation purposes.
 4: Duplicates taken on 03/02 and 03/27 for well E1-2; average of both values is presented and used for calculation purposes.
 5: Duplicates taken on 03/06 for well E1-3; average of both values is presented and used for calculation purposes.
 6: No flushing and no pumping occurring at E2 plot from 03/1 to 03/31.

Nevada Environmental Response Trust Groundwater Extraction and Treatment System Enhanced Operational Metrics																
Date	E2-2 ⁶				E2-3 ⁶				E2-4 ⁶				E2-5 ⁶			
	Flow (gpm)	Water Elevation (ft amsl)	Cr (VI) ¹ (mg/L)	ClO ₂ ¹ (mg/L)	Flow (gpm)	Water Elevation (ft amsl)	Cr (VI) ¹ (mg/L)	ClO ₂ ¹ (mg/L)	Flow (gpm)	Water Elevation (ft amsl)	Cr (VI) ¹ (mg/L)	ClO ₂ ¹ (mg/L)	Flow (gpm)	Water Elevation (ft amsl)	Cr (VI) ¹ (mg/L)	ClO ₂ ¹ (mg/L)
03/01/17	0.00				0.00				0.00				0.00			
03/02/17	0.00				0.00				0.00				0.00			
03/03/17	0.00				0.00				0.00				0.00			
03/04/17	0.00				0.00				0.00				0.00			
03/05/17	0.00				0.00				0.00				0.00			
03/06/17	0.00				0.00				0.00				0.00			
03/07/17	0.00				0.00				0.00				0.00			
03/08/17	0.00				0.00				0.00				0.00			
03/09/17	0.00				0.00				0.00				0.00			
03/10/17	0.00				0.00				0.00				0.00			
03/11/17	0.00				0.00				0.00				0.00			
03/12/17	0.00				0.00				0.00				0.00			
03/13/17	0.00				0.00				0.00				0.00			
03/14/17	0.00				0.00				0.00				0.00			
03/15/17	0.00				0.00				0.00				0.00			
03/16/17	0.00				0.00				0.00				0.00			
03/17/17	0.00				0.00				0.00				0.00			
03/18/17	0.00				0.00				0.00				0.00			
03/19/17	0.00				0.00				0.00				0.00			
03/20/17	0.00				0.00				0.00				0.00			
03/21/17	0.00				0.00				0.00				0.00			
03/22/17	0.00				0.00				0.00				0.00			
03/23/17	0.00				0.00				0.00				0.00			
03/24/17	0.00				0.00				0.00				0.00			
03/25/17	0.00				0.00				0.00				0.00			
03/26/17	0.00				0.00				0.00				0.00			
03/27/17	0.00				0.00				0.00				0.00			
03/28/17	0.00				0.00				0.00				0.00			
03/29/17	0.00				0.00				0.00				0.00			
03/30/17	0.00				0.00				0.00				0.00			
03/31/17	0.00				0.00				0.00				0.00			
Monthly Average ²	0.00				0.00				0.00				0.00			

Notes:
 Flow reported as gpm is a daily average calculated from the totalizer reading.
 1: Analytical results are reported from TestAmerica.
 2: All average concentrations reported are monthly flow weighted averages.
 6: No flushing and no pumping occurring at E2 plot from 3/1 to 3/31.

Figure 1 - GW-11 Pond Volume and Perchlorate Concentration

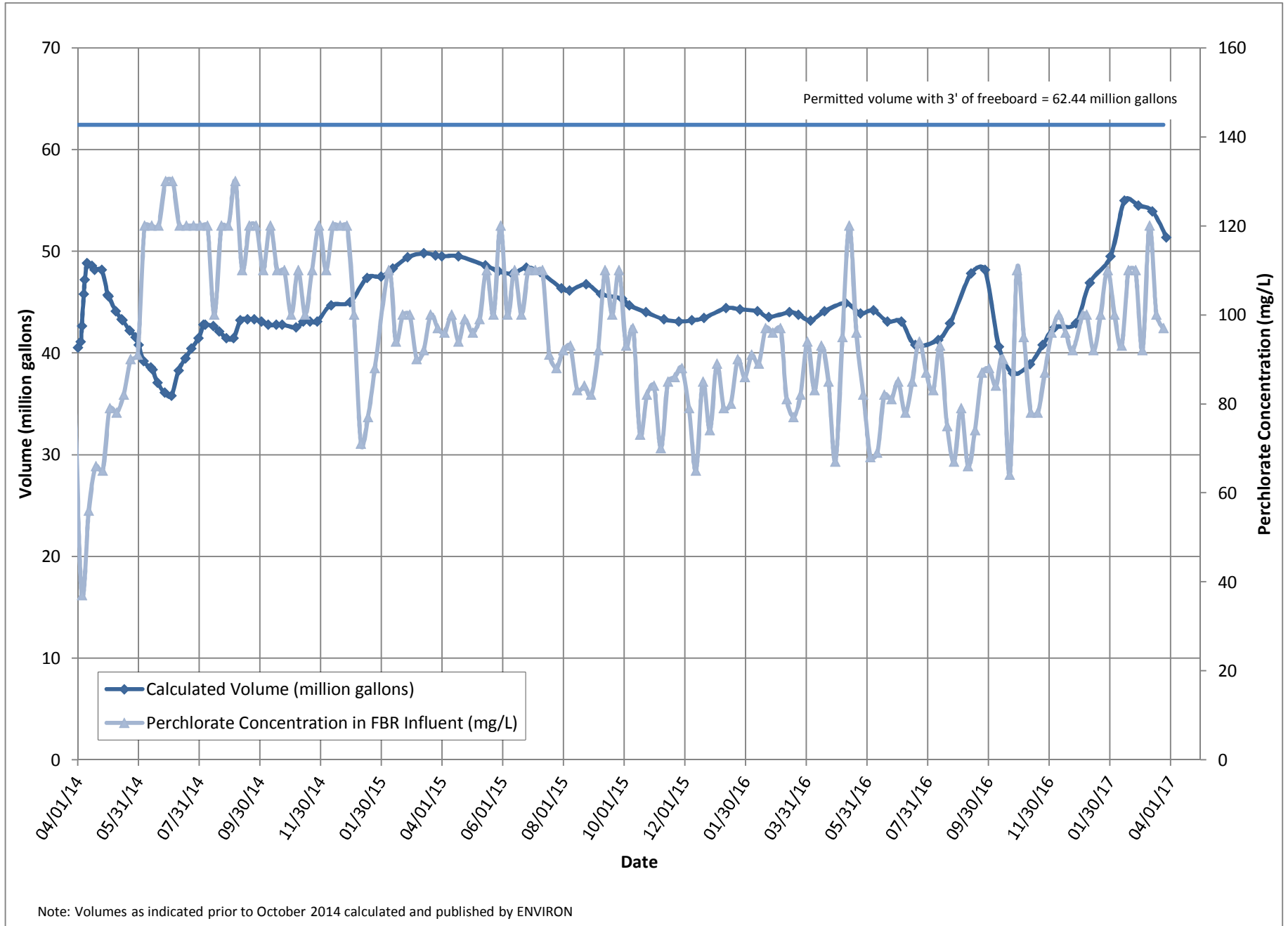


Figure 2 - FBR Equivalent Loading Calculation

