

Nevada Environmental Response Trust Groundwater Extraction and Treatment System Enhanced Operational Metrics																											
Date	LS #1 Flow (gpm)	East Well (PC-116R)		Center Well (PC99R3)		West Well (PC-115R)		PC 117		PC 118		PC 119		PC 120		PC 121		PC 133									
		Flow (gpm)	Water Elevation (ft amsl)	Flow (gpm)	Water Elevation (ft amsl)	Flow (gpm)	Water Elevation (ft amsl)	Flow (gpm)	Water Elevation (ft amsl)	Flow (gpm)	Water Elevation (ft amsl)	Flow (gpm)	Water Elevation (ft amsl)	Flow (gpm)	Water Elevation (ft amsl)	Flow (gpm)	Water Elevation (ft amsl)	Flow ² (gpm)	Water Elevation (ft amsl)								
07/01/16	561	152	1539.1	71	1541.1	102	1525.0	121	1538.5	70	1547.3	41	1549.1	0	1550.8	0	1550.5	7	1520.0								
07/02/16	553	149	1539.1	69	1540.7	100	1525.0	119	1538.4	69	1547.3	40	1549.1	0	1550.8	0	1550.5	7	1520.0								
07/03/16	536	149	1539.2	70	1541.1	100	1525.0	119	1538.5	69	1547.4	41	1549.2	0	1550.9	0	1550.6	7	1520.0								
07/04/16	527	148	1539.1	69	1541.0	99	1525.0	118	1538.4	69	1547.4	40	1549.2	0	1550.9	0	1550.7	7	1520.0								
07/05/16	524	148	1539.1	69	1541.1	100	1525.0	118	1538.4	69	1547.4	41	1549.2	0	1550.9	0	1550.7	7	1520.0								
07/06/16	510	149	1539.1	70	1540.9	100	1525.0	119	1538.4	70	1547.4	40	1549.2	0	1550.9	0	1550.6	7	1520.0								
07/07/16	573	149	1539.1	69	1541.2	87	1525.0	118	1538.4	69	1547.3	40	1549.2	0	1550.9	0	1550.6	7	1520.0								
07/08/16	634	152	1539.0	71	1540.7	90	1525.0	121	1538.4	71	1547.3	42	1549.2	0	1550.9	0	1550.6	7	1520.0								
07/09/16	625	149	1539.0	69	1540.8	88	1525.0	119	1538.3	69	1547.3	40	1549.1	0	1550.9	0	1550.6	7	1520.0								
07/10/16	622	149	1539.0	69	1540.9	88	1525.0	119	1538.3	69	1547.3	40	1549.1	0	1550.9	0	1550.6	7	1520.0								
07/11/16	597	149	1538.9	69	1541.1	93	1525.0	119	1538.3	69	1547.3	40	1549.1	0	1550.8	0	1550.6	2	1520.0								
07/12/16	575	149	1538.9	70	1541.0	92	1525.0	119	1538.3	70	1547.3	41	1549.1	0	1550.8	0	1550.6	2	1520.0								
07/13/16	516	146	1538.8	70	1540.9	112	1525.0	119	1538.2	69	1547.2	41	1549.1	0	1550.8	0	1550.5	2	1520.0								
07/14/16	512	145	1538.8	69	1540.6	111	1525.0	118	1538.2	69	1547.2	40	1549.1	0	1550.8	0	1550.5	2	1520.0								
07/15/16	508	149	1538.8	70	1541.0	91	1525.0	119	1538.2	70	1547.2	41	1549.0	0	1550.8	0	1550.5	2	1520.0								
07/16/16	519	153	1538.9	69	1541.0	92	1525.0	119	1538.2	69	1547.2	40	1549.0	0	1550.7	0	1550.5	2	1520.0								
07/17/16	517	152	1538.9	69	1540.7	92	1525.0	119	1538.1	69	1547.2	40	1549.0	0	1550.7	0	1550.5	2	1520.0								
07/18/16	511	151	1538.8	69	1541.0	93	1525.0	118	1538.1	69	1547.2	40	1549.0	0	1550.7	0	1550.4	2	1520.0								
07/19/16	505	150	1538.8	68	1540.8	97	1525.0	117	1538.1	68	1547.1	39	1549.0	0	1550.7	0	1550.4	2	1520.0								
07/20/16	508	153	1538.8	69	1540.7	98	1525.0	120	1538.0	70	1547.1	41	1549.0	0	1550.7	0	1550.4	2	1520.0								
07/21/16	469	152	1538.8	69	1540.8	99	1525.0	118	1538.0	69	1547.1	40	1548.9	0	1550.6	0	1550.4	2	1520.0								
07/22/16	468	154	1538.7	70	1540.7	99	1525.0	120	1538.0	70	1547.1	41	1548.9	0	1550.6	0	1550.3	2	1520.0								
07/23/16	469	151	1538.7	68	1540.9	98	1525.0	118	1538.0	69	1547.1	40	1548.9	0	1550.6	0	1550.3	2	1520.0								
07/24/16	469	152	1538.7	69	1540.7	100	1525.0	119	1538.0	69	1547.1	41	1548.9	0	1550.6	0	1550.3	2	1520.0								
07/25/16	468	151	1538.7	69	1540.8	100	1525.0	119	1537.9	70	1547.0	40	1548.9	0	1550.6	0	1550.3	2	1520.0								
07/26/16	469	149	1538.6	68	1541.0	98	1525.0	117	1537.9	68	1547.0	40	1548.9	0	1550.6	0	1550.3	2	1520.0								
07/27/16	477	153	1538.6	69	1540.8	100	1525.0	120	1537.9	70	1547.0	41	1548.9	0	1550.5	0	1550.3	2	1520.0								
07/28/16	469	152	1538.6	69	1540.7	100	1525.0	119	1537.9	70	1547.0	40	1548.8	0	1550.5	0	1550.3	0	1520.0								
07/29/16	469	152	1538.6	69	1540.9	100	1525.0	119	1537.9	70	1547.0	41	1548.8	0	1550.5	0	1550.3	0	1520.0								
07/30/16	469	150	1538.6	68	1540.8	98	1525.0	118	1537.9	68	1547.0	40	1548.8	0	1550.5	0	1550.2	0	1520.0								
07/31/16	469	154	1538.6	70	1540.9	100	1525.0	120	1537.9	70	1547.0	40	1548.8	0	1550.5	0	1550.2	0	1520.0								
Monthly Average	519	150	1538.9	69	1540.9	97	1525.0	119	1538.2	69	1547.2	40	1549.0	0	1550.7	0	1550.5	3	1520.0								
Analytical ¹	Conc (mg/L)		Date	Conc (mg/L)		Date	Conc (mg/L)		Date	Conc (mg/L)		Date	Conc (mg/L)		Date	Conc (mg/L)		Date	Conc (mg/L)		Date						
Perchlorate	13		7/5/2016	17		7/5/2016	14		7/5/2016	5.6		7/5/2016	5.2		7/5/2016	0.65		7/5/2016	0.0056		7/5/2016	ND		7/5/2016	0.74		7/5/2016
Hexavalent Chromium	ND		7/5/2016	ND		7/5/2016	ND		7/5/2016	0.0022		7/5/2016	ND		7/5/2016	ND		7/5/2016	ND		7/5/2016	ND		7/5/2016	ND		7/5/2016
Total Chromium	ND		7/5/2016	ND		7/5/2016	ND		7/5/2016	ND		7/5/2016	ND		7/5/2016	ND		7/5/2016	ND		7/5/2016	ND		7/5/2016	ND		7/5/2016

Notes:
 Flow reported as gpm is a daily average calculated from the totalizer reading.
 NA = Not Available; ND = Not detected above laboratory method detection limit (CIO₄ = 0.5 ug/L; Cr(TR)=2.5 ug/L, Cr(VI) = 1 ug/L).
 1: Analytical results are reported from TestAmerica.
 2: PC 133 off starting 07/28, awaiting motor replacement.

Nevada Environmental Response Trust Groundwater Extraction and Treatment System Enhanced Operational Metrics																	
Date	LS #3 Flow (gpm)	ART 1A/1B		ART 2A/2B		ART 3A/3B		ART 4A/4B		ART 6/9		ART 7A/7B		ART 8A/8B		PC-150	
		Flow (gpm)	Water Elevation (ft amsl)	Flow ⁵ (gpm)	Water Elevation (ft amsl)	Flow (gpm)	Water Elevation (ft amsl)	Flow (gpm)	Water Elevation (ft amsl)	Flow ^{3,4} (gpm)	Water Elevation (ft amsl)	Flow ^{3,5,6} (gpm)	Water Elevation (ft amsl)	Flow ^{3,4,6} (gpm)	Water Elevation (ft amsl)	Flow (gpm)	Water Elevation (ft amsl)
07/01/16	234	0	1591.7	88	1590.7	47	1587.7	7	1575.0	73	1582.2	15	1585.7	59	1587.2	4	1583.8
07/02/16	235	0	1591.7	88	1590.7	45	1587.7	6	1575.0	73	1582.2	15	1585.8	59	1587.2	3	1585.0
07/03/16	234	0	1591.7	88	1590.7	44	1587.7	7	1575.0	72	1582.2	14	1585.8	58	1587.2	3	1584.2
07/04/16	234	0	1591.7	88	1590.7	44	1587.7	7	1575.0	72	1582.2	14	1585.8	59	1587.2	3	1584.6
07/05/16	235	0	1591.7	88	1590.7	44	1587.7	8	1575.0	73	1582.2	15	1585.8	59	1587.2	3	1585.2
07/06/16	234	0	1591.7	88	1590.7	45	1587.7	8	1575.0	73	1582.2	14	1585.8	58	1587.2	3	1584.2
07/07/16	234	0	1591.7	88	1590.7	44	1587.7	8	1575.0	72	1582.2	14	1585.8	59	1587.2	3	1584.1
07/08/16	234	0	1591.7	88	1590.7	44	1587.7	8	1575.0	73	1582.3	14	1585.8	59	1587.2	3	1584.4
07/09/16	234	0	1591.7	88	1590.7	44	1587.7	8	1575.0	73	1582.2	14	1585.9	58	1587.2	3	1583.9
07/10/16	235	0	1591.7	88	1590.7	44	1587.8	8	1575.0	73	1582.2	15	1585.9	59	1587.2	3	1584.1
07/11/16	234	0	1591.7	88	1590.7	44	1587.7	8	1575.0	72	1582.3	14	1585.9	58	1587.2	3	1583.8
07/12/16	234	0	1591.7	88	1590.7	45	1587.8	9	1575.0	73	1582.2	14	1585.9	59	1587.2	3	1584.6
07/13/16	235	0	1591.7	88	1590.7	44	1587.7	8	1575.0	62	1582.3	15	1585.9	58	1587.2	3	1583.8
07/14/16	234	0	1591.7	88	1590.7	44	1587.7	8	1575.0	59	1582.3	14	1585.9	59	1587.2	3	1584.6
07/15/16	234	0	1591.7	88	1590.7	44	1587.8	8	1575.0	58	1582.3	15	1585.9	59	1587.2	4	1583.8
07/16/16	234	0	1591.7	88	1591.3	44	1587.7	8	1575.0	58	1582.3	15	1586.0	58	1587.2	3	1583.9
07/17/16	235	0	1591.7	88	1591.3	44	1587.7	8	1575.0	59	1587.2	14	1582.3	58	1585.9	3	1584.8
07/18/16	234	0	1591.6	88	1591.2	44	1587.7	8	1575.0	59	1582.3	14	1585.9	59	1587.2	3	1584.5
07/19/16	234	0	1591.6	88	1591.2	45	1587.7	8	1575.0	58	1582.3	14	1585.9	59	1587.2	3	1583.8
07/20/16	234	0	1591.6	88	1591.2	44	1587.7	8	1575.0	59	1582.3	14	1585.9	59	1587.2	4	1584.4
07/21/16	235	0	1591.6	88	1591.2	44	1587.7	8	1575.0	59	1582.3	15	1586.0	58	1587.2	3	1585.0
07/22/16	235	0	1591.6	88	1591.2	44	1587.7	8	1575.0	58	1582.3	15	1586.0	58	1587.2	4	1584.0
07/23/16	234	0	1591.6	87	1591.2	45	1587.7	10	1575.0	58	1582.3	14	1586.0	59	1587.2	3	1585.1
07/24/16	235	0	1591.6	88	1591.2	44	1587.7	9	1575.0	59	1582.3	15	1586.0	58	1587.2	3	1584.0
07/25/16	250	0	1591.6	85	1591.2	44	1587.7	9	1575.0	0	1582.3	0	1585.9	0	1587.1	3	1584.4
07/26/16	326	0	1591.4	100	1590.9	44	1587.5	9	1575.0	57	1578.5	19	1588.0	46	1586.6	3	1584.2
07/27/16	335	0	1591.0	92	1590.4	43	1587.1	8	1575.0	69	1578.1	18	1588.2	105	1585.7	4	1584.6
07/28/16	343	0	1591.1	86	1590.6	43	1587.2	8	1575.0	84	1582.2	15	1579.2	124	1586.2	3	1585.2
07/29/16	350	0	1590.9	88	1590.3	44	1586.9	8	1575.0	88	1582.1	15	1579.9	146	1585.5	3	1583.8
07/30/16	352	0	1590.7	88	1590.1	44	1586.7	8	1575.0	88	1582.0	14	1579.7	147	1585.3	3	1584.2
07/31/16	351	0	1590.6	88	1589.9	44	1586.6	7	1575.0	88	1582.0	15	1579.7	146	1585.2	3	1585.1
Monthly Average	256	0	1591.5	88	1590.8	44	1587.6	8	1575.0	66	1582.1	14	1585.1	68	1586.9	3	1584.4
Analytical ¹		Conc (mg/L)	Date	Conc (mg/L)	Date	Conc (mg/L)	Date	Conc (mg/L)	Date	Conc (mg/L) ²	Date	Conc (mg/L)	Date	Conc (mg/L)	Date	Conc (mg/L)	Date
Perchlorate		23	7/5/2016	26	7/5/2016	170	7/5/2016	260	7/5/2016	220	7/5/2016	120	7/5/2016	100	7/5/2016	230	7/5/2016
Hexavalent Chromium		0.00186	7/5/2016	ND	7/5/2016	0.225	7/5/2016	0.433	7/5/2016	0.821	7/5/2016	0.548	7/5/2016	0.100	7/5/2016	0.289	7/5/2016
Total Chromium		0.074	7/5/2016	0.0092	7/5/2016	0.25	7/5/2016	0.46	7/5/2016	0.78	7/5/2016	0.61	7/5/2016	0.087	7/5/2016	0.34	7/5/2016

Notes:
 Flow reported as gpm is a daily average calculated from the totalizer reading. NA = Not Available.
 1: Analytical results are reported from TestAmerica.
 2: Concentrations reported for ART-9.
 3: Motors for ART 6/9, ART 7A/7B and ART 8A/8B pulled on 07/25.
 4: ART 6/9 and ART 8A/8B back online after new pump and motor installed on 07/26.
 5: ART 7A/7B back online on 07/26.
 6: Flow increased at the direction of the Trust on 07/26 for ART 2A/2B, ART 7A/7B and ART 8A/8B.

Table 3 - Interceptor Well Field (IWF) Operational Metrics

Nevada Environmental Response Trust Groundwater Extraction and Treatment System Enhanced Operational Metrics																				
Date	I-AR		I-AA		I-AB		I-AC		I-AD		I-B		I-C		I-D		I-E		I-F	
	Flow ² (gpm)	Water Elevation (ft amsl)	Flow ^{2 3} (gpm)	Water Elevation (ft amsl)	Flow ² (gpm)	Water Elevation (ft amsl)	Flow (gpm)	Water Elevation (ft amsl)	Flow (gpm)	Water Elevation (ft amsl)	Flow (gpm)	Water Elevation (ft amsl)	Flow (gpm)	Water Elevation (ft amsl)	Flow ⁴ (gpm)	Water Elevation (ft amsl)	Flow ⁴ (gpm)	Water Elevation (ft amsl)	Flow ² (gpm)	Water Elevation (ft amsl)
07/01/16	0.42	1725.6	0.87	1713.6	0.00	1710.0	0.00	1723.4	0.00	1725.1	0.36	1717.6	0.80	1722.1	0.00	1706.0	0.00	1706.0	4.69	1719.3
07/02/16	0.41	1725.8	0.82	1714.2	0.00	1710.0	0.00	1723.3	0.00	1725.1	0.37	1717.4	0.78	1722.3	0.00	1706.0	0.00	1706.0	4.69	1719.9
07/03/16	0.40	1725.8	0.82	1714.6	0.00	1710.0	0.00	1723.4	0.00	1725.1	0.46	1717.0	0.74	1722.4	0.00	1706.0	0.00	1706.0	4.69	1720.3
07/04/16	0.41	1726.0	0.82	1714.7	0.00	1710.0	0.00	1723.4	0.00	1725.1	0.40	1716.8	0.78	1722.5	0.00	1706.0	0.00	1706.0	4.69	1720.5
07/05/16	0.41	1725.8	0.81	1714.8	0.18	1710.0	0.00	1723.4	0.00	1725.1	0.47	1716.9	2.21	1720.2	0.00	1706.0	0.00	1706.0	4.69	1720.8
07/06/16	0.24	1725.7	0.01	1714.8	0.18	1710.0	0.00	1723.4	0.00	1725.1	0.54	1716.3	2.11	1720.0	1.58	1706.0	1.09	1706.0	0.78	1721.0
07/07/16	0.00	1714.0	0.00	1721.1	0.18	1710.0	0.00	1723.4	0.00	1725.1	0.60	1716.3	2.54	1720.2	2.13	1723.0	1.58	1717.9	0.00	1705.0
07/08/16	0.00	1714.0	0.00	1721.2	0.18	1710.0	0.00	1723.4	0.00	1725.1	0.63	1715.3	2.91	1717.9	2.53	1722.9	1.56	1717.1	0.00	1705.0
07/09/16	0.00	1714.0	0.00	1721.2	0.18	1710.0	0.00	1723.4	0.00	1725.1	0.62	1717.0	2.81	1718.1	2.58	1722.9	1.53	1717.0	0.00	1705.0
07/10/16	0.00	1714.0	0.00	1721.3	0.18	1710.0	0.00	1723.4	0.00	1725.1	0.66	1718.0	2.82	1718.4	2.58	1722.9	1.52	1717.1	0.00	1705.0
07/11/16	0.76	1714.0	0.00	1721.3	0.20	1710.0	0.00	1723.4	0.00	1725.1	0.69	1718.1	2.51	1718.7	2.58	1722.9	1.87	1717.1	3.04	1705.0
07/12/16	0.65	1717.4	0.00	1721.4	0.18	1720.7	0.00	1723.4	0.00	1725.1	0.74	1717.2	2.74	1719.1	2.41	1722.9	1.85	1716.8	4.22	1705.0
07/13/16	0.64	1723.1	0.00	1721.4	0.18	1721.6	0.00	1723.4	0.00	1725.1	0.66	1717.4	2.69	1719.0	2.34	1722.9	1.83	1716.6	4.21	1705.0
07/14/16	0.64	1723.4	0.00	1721.4	0.18	1721.6	0.00	1723.4	0.00	1725.1	0.70	1717.6	3.72	1719.0	2.34	1722.9	1.83	1716.5	4.22	1705.0
07/15/16	0.65	1723.4	0.00	1721.4	0.18	1721.5	0.00	1710.0	0.00	1710.0	0.66	1715.2	4.01	1710.0	2.35	1722.8	1.83	1716.3	4.22	1705.0
07/16/16	0.63	1723.4	0.00	1721.4	0.18	1721.5	0.00	1710.0	0.00	1710.0	0.70	1714.7	3.77	1710.0	2.34	1722.7	1.78	1716.2	4.22	1705.0
07/17/16	0.64	1723.4	0.00	1721.4	0.18	1721.4	0.00	1710.0	0.00	1710.0	0.56	1714.7	3.75	1710.0	2.34	1722.6	1.77	1716.1	4.45	1705.0
07/18/16	0.61	1723.3	0.00	1721.4	0.18	1721.4	0.00	1710.0	0.00	1710.0	0.55	1714.7	3.75	1710.0	2.34	1722.5	1.68	1716.1	4.69	1705.0
07/19/16	0.59	1723.2	0.00	1721.4	0.18	1721.4	0.00	1710.0	0.00	1710.0	0.57	1714.8	3.75	1710.0	2.34	1722.5	1.57	1716.0	4.69	1705.0
07/20/16	0.59	1723.1	0.00	1721.4	0.18	1721.4	0.00	1710.0	0.00	1710.0	0.57	1714.8	3.75	1710.0	2.34	1722.5	1.48	1715.9	4.69	1705.0
07/21/16	0.59	1723.1	0.00	1721.4	0.18	1721.4	0.00	1710.0	0.00	1710.0	0.53	1715.0	3.75	1710.0	2.34	1722.4	1.48	1715.9	4.69	1705.0
07/22/16	0.59	1722.9	0.00	1721.3	0.18	1721.3	0.00	1722.9	0.00	1725.3	0.54	1716.9	3.75	1710.0	2.34	1722.4	1.49	1715.8	4.69	1705.0
07/23/16	0.59	1722.9	0.00	1721.4	0.18	1721.3	0.00	1722.9	0.00	1725.3	0.53	1716.7	3.75	1710.0	2.34	1722.4	1.42	1715.9	4.69	1705.0
07/24/16	0.59	1722.9	0.00	1721.3	0.18	1721.3	0.00	1722.9	0.00	1725.3	0.50	1716.9	3.75	1710.0	2.34	1722.4	1.41	1715.8	4.69	1705.0
07/25/16	0.59	1722.7	0.00	1721.3	0.18	1721.3	0.00	1722.9	0.00	1725.3	0.54	1717.0	3.75	1710.7	2.34	1722.4	1.41	1715.8	4.69	1705.0
07/26/16	0.59	1722.7	0.00	1721.3	0.18	1721.3	0.00	1722.9	0.00	1725.3	0.51	1717.0	3.69	1710.9	2.34	1722.3	1.41	1715.8	4.69	1705.0
07/27/16	0.59	1722.7	0.00	1721.3	0.18	1721.3	0.00	1722.9	0.00	1725.3	0.53	1717.1	3.75	1710.3	2.09	1722.3	1.41	1715.8	4.69	1705.0
07/28/16	0.59	1722.7	0.00	1721.3	0.18	1721.3	0.00	1723.0	0.00	1725.3	0.55	1715.8	3.75	1710.2	1.88	1722.3	1.41	1715.7	4.69	1705.0
07/29/16	0.59	1722.6	0.00	1721.3	0.18	1721.3	0.00	1723.0	0.00	1725.3	0.60	1714.9	3.66	1710.3	1.87	1722.3	1.41	1715.7	4.69	1705.0
07/30/16	0.59	1722.5	0.00	1721.3	0.18	1721.2	0.00	1723.0	0.00	1725.3	0.66	1710.0	2.81	1716.0	1.87	1722.3	1.41	1715.7	4.69	1705.0
07/31/16	0.59	1722.4	0.00	1721.3	0.18	1721.2	0.00	1722.9	0.00	1725.3	0.60	1713.6	2.81	1716.7	1.88	1722.3	1.41	1715.7	4.69	1705.0
Monthly Average	0.49	1721.9	0.13	1720.0	0.15	1717.3	0.00	1720.2	0.00	1721.8	0.57	1716.1	2.97	1665.3	1.90	1719.4	1.30	1714.3	3.82	1708.0
Analytical ¹	Conc (mg/L)	Date	Conc (mg/L)	Date	Conc (mg/L)	Date	Conc (mg/L)	Date	Conc (mg/L)	Date	Conc (mg/L)	Date	Conc (mg/L)	Date	Conc (mg/L)	Date	Conc (mg/L)	Date	Conc (mg/L)	Date
Perchlorate	1600	7/6/2016	99	7/6/2016	86	7/12/2016	130	7/12/2016	130	7/12/2016	420	7/6/2016	680	7/6/2016	690	7/12/2016	550	7/12/2016	920	7/6/2016
Hexavalent Chromium ⁵	0.087	6/13/2016	0.049	6/13/2016	ND	6/13/2016	1.53	6/8/2016	0.136	6/8/2016	0.094	6/13/2016	3.39	6/13/2016	5.22	6/13/2016	8.12	6/13/2016	11.4	6/13/2016
Total Chromium	0.14	7/6/2016	0.055	7/6/2016	0.046	7/12/2016	1.0	7/12/2016	0.73	7/12/2016	0.12	7/6/2016	2.7	7/6/2016	6.1	7/12/2016	8.4	7/12/2016	12	7/6/2016

Notes:
 Flow reported as gpm is a daily average calculated from the totalizer reading. NA=Not Available.
 1: Analytical results are reported from TestAmerica.
 2: Wells I-AR, I-AA, I-F, I-H, I-S and I-W off for optimization testing by Ramboll starting 07/06.
 3: Well I-AB inadvertently turned on after completion of I-AA testing.
 4: Wells I-D, I-E, I-G, I-M, I-N and I-X off for optimization testing by Ramboll starting 06/30.
 5: July 2016 hexavalent chromium data not available from TestAmerica at time of submission. June 2016 data are presented for calculation purposes.

Nevada Environmental Response Trust Groundwater Extraction and Treatment System Enhanced Operational Metrics																				
Date	I-G		I-H		I-I		I-J		I-K		I-L		I-M		I-N		I-O		I-P	
	Flow ⁴ (gpm)	Water Elevation (ft amsl)	Flow ² (gpm)	Water Elevation (ft amsl)	Flow ⁷ (gpm)	Water Elevation (ft amsl)	Flow (gpm)	Water Elevation (ft amsl)	Flow (gpm)	Water Elevation (ft amsl)	Flow (gpm)	Water Elevation (ft amsl)	Flow ⁴ (gpm)	Water Elevation (ft amsl)	Flow ⁴ (gpm)	Water Elevation (ft amsl)	Flow ⁴ (gpm)	Water Elevation (ft amsl)	Flow ⁴ (gpm)	Water Elevation (ft amsl)
07/01/16	0.00	1710.0	1.13	1709.5	5.04	1721.3	6.30	1707.0	3.05	1713.6	1.06	1721.7	0.00	1710.0	0.00	1710.0	0.57	1721.1	2.60	1716.7
07/02/16	0.00	1710.0	1.12	1709.4	5.15	1721.3	6.39	1707.0	3.05	1713.6	1.00	1721.7	0.00	1710.0	0.00	1710.0	0.58	1721.1	2.58	1716.7
07/03/16	0.00	1710.0	1.07	1709.4	5.15	1721.3	9.16	1707.0	3.05	1713.6	0.92	1721.9	0.00	1710.0	0.00	1710.0	0.55	1721.1	2.58	1716.8
07/04/16	0.00	1710.0	1.07	1709.5	5.15	1721.3	10.31	1707.0	3.05	1713.6	0.92	1722.1	0.00	1710.0	0.00	1710.0	0.55	1721.1	2.58	1716.8
07/05/16	0.00	1710.0	1.08	1709.4	5.15	1721.3	10.31	1707.0	3.05	1713.6	1.10	1721.7	0.00	1710.0	0.00	1710.0	0.56	1721.2	2.58	1716.9
07/06/16	0.00	1710.0	0.23	1709.5	5.16	1721.3	10.31	1707.0	3.02	1714.9	1.05	1721.7	0.46	1710.0	1.59	1710.0	0.57	1721.1	2.58	1717.0
07/07/16	0.16	1710.0	0.00	1707.0	5.16	1721.4	10.31	1707.0	2.81	1715.0	1.05	1722.7	0.54	1723.5	3.55	1719.2	0.55	1721.4	2.58	1718.3
07/08/16	0.21	1711.6	0.00	1707.0	5.16	1721.5	10.31	1707.0	2.81	1715.1	1.05	1723.0	0.51	1723.5	4.22	1719.3	0.54	1721.5	2.58	1718.8
07/09/16	0.20	1712.4	0.00	1707.0	5.16	1721.5	10.31	1707.0	2.81	1715.2	1.05	1723.2	0.47	1723.5	4.22	1719.3	0.53	1721.6	2.58	1719.0
07/10/16	0.21	1712.8	0.00	1707.0	4.83	1721.6	10.08	1707.0	2.81	1715.2	1.05	1723.4	0.47	1723.6	4.21	1719.7	0.53	1721.7	2.47	1719.3
07/11/16	0.20	1713.2	0.90	1707.0	4.69	1721.6	6.56	1707.0	2.81	1715.2	0.89	1723.5	1.11	1723.6	4.22	1719.7	0.18	1721.7	0.73	1719.4
07/12/16	0.20	1715.3	1.34	1718.0	4.69	1721.7	5.77	1707.0	2.81	1715.2	1.17	1722.8	1.03	1723.0	4.22	1712.4	0.00	1710.0	0.00	1705.0
07/13/16	0.20	1715.8	1.32	1718.5	4.69	1721.7	8.96	1707.0	2.81	1715.1	1.18	1722.6	0.94	1723.3	4.22	1715.3	0.00	1710.0	0.00	1705.0
07/14/16	0.19	1716.7	1.27	1718.9	1.10	1721.7	9.38	1707.0	1.80	1715.2	1.22	1722.6	1.60	1723.3	4.22	1715.1	0.98	1710.0	1.32	1705.0
07/15/16	0.21	1716.4	1.22	1719.0	0.00	1710.0	9.38	1705.0	1.30	1706.0	1.17	1722.2	1.56	1722.7	4.22	1714.6	1.03	1721.8	1.44	1721.3
07/16/16	0.20	1716.2	1.17	1719.4	0.00	1710.0	9.37	1705.0	1.41	1706.0	1.17	1722.1	1.41	1722.8	4.22	1713.6	1.00	1722.1	1.41	1721.5
07/17/16	0.20	1716.0	1.17	1719.7	0.00	1710.0	9.37	1705.0	1.38	1706.0	1.17	1722.0	1.41	1722.8	4.22	1713.5	1.03	1722.3	1.41	1721.7
07/18/16	0.18	1715.8	1.17	1720.0	0.00	1710.0	9.38	1705.0	1.41	1706.0	1.17	1721.9	1.27	1722.7	4.22	1713.4	1.05	1722.4	1.41	1721.9
07/19/16	0.18	1716.3	1.17	1720.2	4.18	1710.0	9.37	1705.0	2.53	1706.0	1.17	1721.9	1.17	1722.7	4.22	1718.1	1.06	1722.6	1.41	1722.1
07/20/16	0.18	1716.8	1.17	1720.3	4.69	1723.4	9.38	1716.7	2.81	1719.4	1.17	1721.9	1.17	1722.7	4.22	1718.1	0.99	1722.4	1.41	1722.0
07/21/16	0.18	1716.9	1.14	1720.4	4.69	1723.3	9.38	1715.5	2.81	1719.2	1.17	1721.9	1.01	1722.7	4.55	1718.4	1.02	1722.3	1.41	1722.0
07/22/16	0.18	1717.4	1.00	1720.5	4.69	1723.2	9.37	1714.4	2.72	1719.2	1.17	1721.8	0.94	1722.7	4.69	1718.4	1.02	1722.2	1.41	1722.0
07/23/16	0.18	1717.4	0.99	1720.5	4.69	1723.2	9.37	1714.5	2.35	1719.2	1.17	1721.8	0.94	1722.8	4.69	1718.3	1.07	1722.2	1.41	1722.0
07/24/16	0.18	1717.4	1.02	1720.5	4.69	1723.2	9.38	1714.4	2.34	1719.2	1.17	1721.8	0.94	1722.7	4.69	1718.4	1.19	1722.2	1.41	1722.0
07/25/16	0.18	1717.3	1.00	1720.5	4.69	1723.2	9.37	1714.2	2.34	1719.3	1.17	1721.8	0.94	1722.8	4.69	1718.5	1.10	1722.2	1.41	1722.0
07/26/16	0.18	1717.5	0.97	1720.6	4.69	1723.2	9.37	1713.3	2.51	1719.5	1.17	1721.8	0.94	1722.7	4.69	1719.0	1.17	1722.2	1.41	1722.0
07/27/16	0.18	1717.4	0.94	1720.6	4.69	1723.2	9.38	1713.3	2.18	1719.5	1.17	1721.8	0.94	1722.7	4.69	1719.0	1.03	1722.2	1.41	1722.0
07/28/16	0.17	1717.7	1.01	1720.6	4.69	1723.2	9.38	1713.2	1.88	1719.5	1.17	1721.4	0.94	1722.7	4.69	1719.0	0.96	1722.3	1.41	1722.0
07/29/16	0.15	1717.9	1.04	1720.7	4.69	1722.9	9.26	1711.9	1.87	1719.6	1.17	1721.3	0.94	1722.6	4.69	1719.0	0.97	1722.2	1.41	1722.0
07/30/16	0.15	1718.0	1.06	1720.6	4.69	1722.7	7.50	1707.4	1.87	1719.6	1.17	1721.2	0.94	1722.6	4.69	1708.9	1.10	1722.1	1.41	1722.0
07/31/16	0.14	1718.5	1.05	1720.6	4.69	1722.6	7.50	1707.3	1.88	1719.5	1.17	1721.1	0.94	1722.6	4.69	1719.0	1.08	1722.0	1.41	1721.9
Monthly Average	0.15	1714.8	0.93	1715.9	4.09	1720.3	9.03	1709.0	2.43	1715.1	1.12	1722.1	0.82	1720.4	3.59	1715.7	0.79	1720.7	1.67	1718.8
Analytical ¹	Conc (mg/L)	Date	Conc (mg/L)	Date	Conc (mg/L)	Date	Conc (mg/L)	Date	Conc (mg/L)	Date	Conc (mg/L)	Date	Conc (mg/L)	Date	Conc (mg/L)	Date	Conc (mg/L)	Date	Conc (mg/L)	Date
Perchlorate	1500	7/12/2016	1800	7/6/2016	780	7/12/2016	310	7/12/2016	230	7/12/2016	720	7/6/2016	690	7/12/2016	790	7/12/2016	1100	7/6/2016	1300	7/6/2016
Hexavalent Chromium ⁵	20	6/13/2016	20.1	6/13/2016	14.7	6/8/2016	3.8	6/8/2016	3.9	6/8/2016	6.13	6/13/2016	7.93	6/13/2016	8.93	6/13/2016	18.7	6/13/2016	19.7	6/13/2016
Total Chromium	23	7/12/2016	20	7/6/2016	13	7/12/2016	4.0	7/12/2016	2.4	7/12/2016	0.63	7/6/2016	7.7	7/12/2016	8.4	7/12/2016	19	7/6/2016	20	7/6/2016

Notes:
 Flow reported as gpm is a daily average calculated from the totalizer reading. NA=Not Available.
 1: Analytical results are reported from TestAmerica.
 2: Wells I-AR, I-AA, I-F, I-H, I-S and I-W off for optimization testing by Ramboll starting 07/06.
 4: Wells I-D, I-E, I-G, I-M, I-N and I-X off for optimization testing by Ramboll starting 06/30.
 5: July 2016 hexavalent chromium data not available from TestAmerica at time of submission. June 2016 data are presented for calculation purposes.
 6: Wells I-O, I-P, I-Q, I-T, I-U off for optimization testing by Ramboll starting 07/11.
 7: Wells I-I, I-V and I-Z off for optimization testing by Ramboll starting 07/14.

Table 3 - Interceptor Well Field (IWF) Operational Metrics

Nevada Environmental Response Trust Groundwater Extraction and Treatment System Enhanced Operational Metrics																				
Date	I-Q		I-R		I-S		I-T		I-U		I-V		I-W		I-X		I-Y		I-Z	
	Flow ⁶ (gpm)	Water Elevation (ft amsl)	Flow ⁸ (gpm)	Water Elevation (ft amsl)	Flow ² (gpm)	Water Elevation (ft amsl)	Flow ⁶ (gpm)	Water Elevation (ft amsl)	Flow ⁶ (gpm)	Water Elevation (ft amsl)	Flow ⁷ (gpm)	Water Elevation (ft amsl)	Flow ² (gpm)	Water Elevation (ft amsl)	Flow ⁴ (gpm)	Water Elevation (ft amsl)	Flow (gpm)	Water Elevation (ft amsl)	Flow ^{7 9} (gpm)	Water Elevation (ft amsl)
07/01/16	0.65	1711.6	0.00	1721.4	6.09	1710.0	0.51	1705.3	0.84	1707.2	4.22	1718.7	0.94	1710.0	0.00	1700.0	0.60	1719.5	7.40	1710.0
07/02/16	0.65	1711.8	0.00	1721.6	6.24	1710.0	0.51	1705.1	0.84	1707.4	4.22	1718.7	0.94	1710.0	0.00	1700.0	0.59	1720.4	7.40	1710.0
07/03/16	0.65	1713.9	0.00	1721.7	6.54	1710.0	0.52	1705.1	0.84	1707.5	4.22	1718.7	0.94	1710.0	0.00	1700.0	0.57	1720.7	7.20	1710.0
07/04/16	0.65	1714.5	0.00	1721.8	6.56	1710.0	0.53	1705.1	0.84	1707.4	4.22	1718.7	0.94	1710.0	0.00	1700.1	0.67	1721.0	7.30	1710.0
07/05/16	0.65	1715.1	0.00	1718.8	6.30	1710.0	0.53	1705.1	0.84	1707.4	4.22	1718.7	0.94	1710.0	0.00	1700.1	0.71	1719.1	7.16	1710.0
07/06/16	0.65	1715.4	0.00	1707.0	0.79	1710.0	0.53	1705.1	0.83	1707.5	4.22	1718.7	0.36	1710.0	0.01	1700.1	0.61	1719.9	7.43	1710.0
07/07/16	0.65	1716.1	0.00	1707.0	0.00	1710.0	0.53	1705.1	0.84	1707.5	4.22	1718.9	0.00	1710.0	1.15	1722.3	0.60	1721.2	7.28	1710.0
07/08/16	0.65	1716.4	0.00	1707.0	0.00	1710.0	0.53	1705.1	0.85	1707.5	4.22	1719.0	0.00	1710.0	1.79	1718.2	0.58	1721.5	7.31	1710.0
07/09/16	0.65	1716.5	0.00	1707.0	0.00	1710.0	0.53	1705.1	0.85	1707.5	4.22	1719.1	0.00	1710.0	1.76	1718.2	0.48	1722.1	7.29	1710.0
07/10/16	0.69	1716.7	0.00	1707.0	0.00	1710.0	0.53	1705.1	0.86	1707.6	4.22	1719.2	0.00	1710.0	1.71	1718.3	0.45	1723.5	7.40	1710.0
07/11/16	0.10	1716.8	0.00	1707.0	4.04	1710.0	0.09	1705.1	0.17	1707.5	4.22	1719.3	0.87	1710.0	2.05	1718.4	0.74	1722.6	7.41	1710.0
07/12/16	0.00	1710.0	0.00	1707.0	5.01	1710.0	0.00	1705.0	0.00	1706.0	4.22	1719.4	1.29	1710.0	1.96	1717.1	0.78	1720.6	7.38	1710.0
07/13/16	0.00	1710.0	0.00	1707.0	4.70	1710.0	0.00	1705.0	0.00	1706.0	4.36	1719.5	1.29	1710.0	1.87	1717.0	0.68	1721.2	7.42	1710.0
07/14/16	0.72	1712.5	1.40	1707.0	4.69	1710.0	0.31	1705.0	0.65	1706.0	0.92	1719.6	1.29	1710.0	2.11	1716.9	1.31	1721.2	1.93	1710.0
07/15/16	0.73	1716.2	1.44	1707.0	4.69	1710.0	0.37	1713.7	0.70	1713.6	0.00	1710.0	1.32	1710.0	2.11	1716.0	0.42	1720.6	0.00	1710.0
07/16/16	0.70	1715.4	1.49	1707.0	4.69	1710.0	0.41	1712.5	0.70	1712.8	0.00	1710.0	1.40	1710.0	2.11	1715.9	0.35	1721.3	0.00	1710.0
07/17/16	0.70	1714.9	1.48	1707.0	4.69	1710.0	0.41	1712.7	0.70	1712.8	0.00	1710.0	1.43	1710.0	2.11	1715.9	0.33	1721.4	0.00	1710.0
07/18/16	0.74	1714.9	1.36	1707.0	4.69	1710.0	0.44	1712.5	0.70	1712.9	0.00	1710.0	1.49	1710.0	2.11	1715.8	0.32	1721.6	0.00	1710.0
07/19/16	0.73	1711.6	1.28	1707.0	4.69	1710.0	0.46	1711.9	0.70	1713.2	4.32	1710.0	1.50	1710.0	2.11	1715.8	0.28	1721.5	2.08	1710.0
07/20/16	0.71	1713.4	1.26	1707.0	4.69	1710.0	0.38	1712.2	0.70	1713.1	4.69	1721.4	1.37	1710.0	2.07	1715.7	0.32	1721.8	0.00	1723.9
07/21/16	0.70	1714.2	1.20	1707.0	4.69	1710.0	0.35	1712.9	0.70	1713.2	4.69	1721.3	1.23	1717.9	1.88	1716.3	0.24	1721.5	0.00	1723.8
07/22/16	0.70	1711.6	1.27	1707.0	4.69	1710.0	0.35	1712.8	0.70	1713.7	4.69	1721.2	1.45	1710.0	1.87	1716.4	0.23	1722.0	0.00	1723.7
07/23/16	0.71	1713.4	1.25	1707.0	4.69	1710.0	0.35	1712.7	0.70	1713.5	4.69	1721.3	1.41	1710.0	1.87	1716.4	0.30	1721.6	0.00	1723.7
07/24/16	0.71	1711.6	1.23	1707.0	4.69	1710.0	0.35	1712.8	0.70	1713.7	4.69	1721.2	1.41	1710.0	1.88	1716.4	0.30	1722.0	0.00	1723.7
07/25/16	0.70	1711.6	1.19	1707.0	4.69	1710.0	0.36	1712.6	0.70	1713.7	4.69	1721.2	1.41	1710.0	1.87	1716.4	0.30	1721.6	0.00	1723.7
07/26/16	0.70	1711.6	1.17	1707.0	4.69	1710.0	0.35	1712.6	0.70	1713.7	4.69	1721.2	1.41	1710.0	1.88	1716.4	0.30	1722.0	0.00	1723.7
07/27/16	0.70	1711.6	1.17	1707.0	4.69	1710.0	0.35	1712.8	0.70	1713.9	4.69	1721.2	1.41	1710.0	1.88	1716.4	1.39	1722.1	0.00	1723.7
07/28/16	0.70	1711.6	1.17	1707.0	4.69	1710.0	0.35	1712.7	0.70	1713.9	4.69	1721.3	1.41	1710.0	1.88	1716.4	1.79	1711.3	5.33	1722.5
07/29/16	0.70	1711.5	1.17	1707.0	4.69	1710.0	0.35	1712.8	0.70	1713.8	4.69	1721.1	1.41	1710.0	1.87	1716.4	1.80	1712.5	8.33	1716.3
07/30/16	0.47	1711.6	1.15	1707.0	4.69	1710.0	0.41	1712.7	0.70	1713.5	4.69	1720.9	1.41	1710.0	1.43	1716.8	1.63	1712.3	7.99	1715.0
07/31/16	1.00	1720.2	1.15	1707.0	4.69	1710.0	0.43	1712.6	0.70	1713.5	4.69	1720.7	1.41	1710.0	1.41	1717.0	1.63	1713.2	7.50	1714.2
Monthly Average	0.63	1714.0	0.74	1709.3	4.21	1710.0	0.39	1709.3	0.68	1710.6	3.76	1718.4	1.08	1710.3	1.51	1713.6	0.69	1720.2	4.15	1714.4
Analytical ¹	Conc (mg/L)	Date	Conc (mg/L)	Date	Conc (mg/L)	Date	Conc (mg/L)	Date	Conc (mg/L)	Date	Conc (mg/L)	Date	Conc (mg/L)	Date	Conc (mg/L)	Date	Conc (mg/L)	Date	Conc (mg/L)	Date
Perchlorate	1500	7/6/2016	1400	7/6/2016	530	7/6/2016	1800	7/6/2016	2000	7/6/2016	960	7/12/2016	1100	7/6/2016	1200	7/12/2016	1700	7/6/2016	370	7/12/2016
Hexavalent Chromium ⁵	20	6/13/2016	0.318	6/13/2016	1.21	6/13/2016	22.7	6/13/2016	22.4	6/13/2016	14.2	6/8/2016	18	6/13/2016	13.5	6/13/2016	0.441	6/13/2016	8.49	6/8/2016
Total Chromium	22	7/6/2016	0.28	7/6/2016	1.3	7/6/2016	24	7/6/2016	23	7/6/2016	20	7/12/2016	19	7/6/2016	12	7/12/2016	0.46	7/6/2016	10	7/12/2016

- Notes:
- Flow reported as gpm is a daily average calculated from the totalizer reading. NA = Not Available
 - Analytical results are reported from TestAmerica.
 - Wells I-AR, I-AA, I-F, I-H, I-S and I-W off for optimization testing by Ramboll starting 07/06.
 - Wells I-D, I-E, I-G, I-M, I-N and I-X off for optimization testing by Ramboll starting 06/30.
 - July 2016 hexavalent chromium data not available from TestAmerica at time of submission. June 2016 data are presented for calculation purposes.
 - Wells I-O, I-P, I-Q, I-T, I-U off for optimization testing by Ramboll starting 07/11.
 - Wells I-V and I-Z off for optimization testing by Ramboll starting 07/14.
 - Well I-R off for optimization testing by Ramboll starting 06/27.
 - Well I-Z off starting 07/20 until motor replacement on 07/27.

Nevada Environmental Response Trust Groundwater Extraction and Treatment System Enhanced Operational Metrics																	
Date	LS #2	GWTP Effluent				GW-11 Influent				FBR Plant Influent ¹							
		Flow (gpm)	TA - Cr (TR) (mg/L)	TA - Cr (VI) (mg/L)	TA - ClO ₄ (mg/L)	Flow ² (gpm)	Cr (TR) (mg/L)	Cr (VI) (mg/L)	ClO ₄ (mg/L)	Flow ^{2,3} (gpm)	TA - ClO ₄ (mg/L)	ETI - ClO ₄ (mg/L)	TA - ClO ₃ (mg/L)	TA - SO ₄ (mg/L)	TA - NO ₃ - N (mg/L)	TA - Cr (TR) (mg/L)	TA - Cr (VI) (mg/L)
07/01/16	914	49				550				963		77					
07/02/16	932	50				450				982		73					
07/03/16	938	48				0				986	85	75					
07/04/16	937	49				0				986		75					
07/05/16	938	52				0				990		77	140	1,100	9.8	0.047	0.037
07/06/16	937	43				0				980		75					
07/07/16	938	47	1.6	ND	820	0				985		71					
07/08/16	937	50				1				988		81					
07/09/16	938	50				0				988	78	82					
07/10/16	938	51				0				988		84					
07/11/16	938	55				0				993		83			10	0.054	0.044
07/12/16	938	56				0				994		84					
07/13/16	938	55				0				993		83					
07/14/16	938	47	0.44	ND	690	370				985		83					
07/15/16	937	39				0				976		83					
07/16/16	938	39				0				977		83					
07/17/16	938	39				0				976	85	81					
07/18/16	937	39				0				976		68			11	0.041	0.035
07/19/16	938	58				0				995		80					
07/20/16	937	57				0				994		89					
07/21/16	938	54	0.21	ND	850	0				992		89					
07/22/16	937	55				0				992		89					
07/23/16	937	57				0				995	94	90					
07/24/16	938	58				0				996		88					
07/25/16	937	57				0	0.16	ND	120	994		88			12	0.028	0.022
07/26/16	938	54				3				992		90					
07/27/16	937	55				0				992		86					
07/28/16	927	62	6.2	2.8	930	0				989		92					
07/29/16	938	67				0				1005		93					
07/30/16	937	62				0				1000	87	91					
07/31/16	938	65				0				1003		90					
Monthly Average	936	52	2.1	0.70	823	44	0.16	ND	120	989	86	83	140	1100	11	0.043	0.035

Notes:
 Flow reported as gpm is a daily average calculated from the totalizer reading.
 ND = Not detected above laboratory method detection limit (ClO₄ = 0.5 ug/L; ClO₃ = 10 ug/L; NO₃-N = 0.055 mg/L, CR(VI) = 0.25 ug/L); NA = Not Available, sample result not reported.
 1: ETI = Envirogen internal process control data, TA = TestAmerica data.
 2: Flows bypassed GW-11 Influent and FBR Plant Influent totalizers from 07/03 - 07/31 due to FBR plant influent strainers clogging.
 3: FBR Plant Influent flows estimated using LS#2 and GWTP for 07/01 - 07/31.

Table 4 - Treatment Plant Operational Metrics

Nevada Environmental Response Trust Groundwater Extraction and Treatment System Enhanced Operational Metrics															
Date	1st Stage FBR Influent			2nd Stage FBR Influent			FBR Plant Effluent ¹								
	Flow (gpm)	pH (s.u.)	ORP (mV)	Flow ⁴ (gpm)	pH (s.u.)	ORP (mV)	Flow (gpm)	TA - ClO ₂ (mg/L)	ETI - ClO ₂ (mg/L)	TA - ClO ₂ (mg/L)	TA - Cr (TR) (mg/L)	TA - Cr (VI) (mg/L)	TA - SO ₄ (mg/L)	TA - NO ₃ - N (mg/L)	ETI - Turbidity (NTU)
07/01/16	870	6.7	-408	821	6.5	-401	956		ND						3
07/02/16	883	7.0	-428	815	6.7	-418	923	ND							6
07/03/16	874	6.7	-400	800	6.4	-372	962								7
07/04/16	922	6.7	-400	866	6.5	-393	865								8
07/05/16	937	6.8	-353	860	6.5	-398	833			ND	0.0049	ND	980	ND	1
07/06/16	924	6.8	-373	920	6.6	-381	935								15
07/07/16	948	6.8	-381	842	6.5	-397	906								19
07/08/16	933	6.8	-386	843	6.5	-398	901								6
07/09/16	938	6.8	-392	833	6.5	-406	890	ND							4
07/10/16	934	6.8	-396	827	6.5	-406	844								2
07/11/16	935	6.8	-392	831	6.5	-407	890				0.0035	ND		ND	6
07/12/16	940	6.8	-393	837	6.5	-408	891								5
07/13/16	949	6.8	-377	944	6.5	-380	910								10
07/14/16	899	6.8	-388	933	6.6	-375	850								37
07/15/16	914	6.8	-394	812	6.6	-397	864								30
07/16/16	935	6.9	-401	828	6.6	-405	878	ND							4
07/17/16	924	6.9	-394	817	6.6	-411	854								2
07/18/16	919	6.8	-403	822	6.6	-410	874				0.0078	ND		ND	2
07/19/16	940	6.8	-384	838	6.5	-405	771								15
07/20/16	915	6.8	-373	846	6.5	-403	874								32
07/21/16	928	6.8	-158	935	6.5	-376	879								9
07/22/16	938	6.8	-157	906	6.5	-344	917								10
07/23/16	831	6.9	-287	937	6.5	-357	879	ND							8
07/24/16	841	6.9	-333	788	6.6	-367	923								9
07/25/16	860	7.2	-341	828	6.6	-356	855				0.020	ND		ND	19
07/26/16	938	7.3	-319	637	6.6	-350	926								1
07/27/16	930	7.5	-328	879	6.6	-354	811								2
07/28/16	901	7.1	-305	868	6.6	-367	810								12
07/29/16	876	7.0	-301	884	6.6	-374	824								15
07/30/16	897	7.2	-310	886	6.7	-371	848								19
07/31/16	974	7.1	-303	875	6.6	-361	886								3
Monthly Average	914	6.9	-354	850	6.6	-385	878	ND	ND	ND	0.0091	ND	980	ND	10

Notes:
 Flow reported as gpm is a daily average calculated from the totalizer reading.
 ND = Not detected above laboratory method detection limit (ClO₂ = 0.5 ug/L; ClO₂ = 10 ug/L; NO₃-N = 0.055 mg/L, CR(VI) = 0.25 ug/L); NA = Not Available, sample result not reported.
 1: ETI = Envirogen internal process control data, TA = TestAmerica data.
 4: 2nd Stage FBR Influent flows were averaged on 07/01 and 07/02 due to inaccuracies with transmitted data.

GW-11 Level Monitoring		
Date	Field Measurement (ft)	Volume (MG)
7/5/2016	25.1	43.1
7/19/2016	26.8	40.8

GW-11 Leak Detection Monitoring				
Date	Amount Pumped ¹ (gallons)			
	NW Corner	NE Corner	SW Corner	SE Corner
7/7/2016	19	1124	0	0
7/22/2016	0	919	0	0

GW-11 Composite Sample ²		
Analytes	Concentration	Units
Perchlorate	79	mg/L
Chlorate	140	mg/L
Ammonia as N	0.27	mg/L
Total Phosphorus	0.039	mg/L
Total Dissolved Solids (TDS)	6200	mg/L
Total Suspended Solids (TSS)	11	mg/L
pH	8.55	s.u.
Calcium	360	mg/L
Iron	0.19	mg/L
Chromium (total)	0.019	mg/L
Chromium VI	0.013	mg/L
Chloride	1800	mg/L
Nitrate as N	6.7	mg/L
Sulfate	1600	mg/L

Notes:

ND = Not detected above laboratory method detection limit (NH₃-N= 0.1 mg/L; Total P = 0.025 ug/L; Cr(VI) = 0.25 ug/L).

1: Pumping occurs over three consecutive days. The total amount pumped over the three day period is listed with the last day pumping occurred.

2: Corner Composite Sample collected quarterly, most recent sampling results presented. Sampled on: July 13, 2016 by Envirogen.

Nevada Environmental Response Trust Groundwater Extraction and Treatment System Enhanced Operational Metrics						
Date	Flow ¹ (gpm)	FBR Influent Concentration			Influent Function Load ² (lbs/day)	6 Month Rolling Average (lbs/day)
		ClO ₄ (mg/L)	NO ₃ as N (mg/L)	ClO ₃ (mg/L)		
Aug 2015	891	87	6.0	160	516	518
Sep 2015	785	103	9.0	180	540	534
Oct 2015	950	86	6.0	180	587	542
Nov 2015	927	82	6.6	140	496	536
Dec 2015	919	76	9.0	160	537	537
Jan 2016	892	85	9.0	160	542	536
Feb 2016	930	93	8.8	300	846	591
Mar 2016	960	84	9.0	160	581	598
April 2016	944	84	9.0	160	572	595
May 2016	976	98	9.0	230	760	639
June 2016	902	75	9.3	130	476	629
July 2016	878	86	11	140	519	626

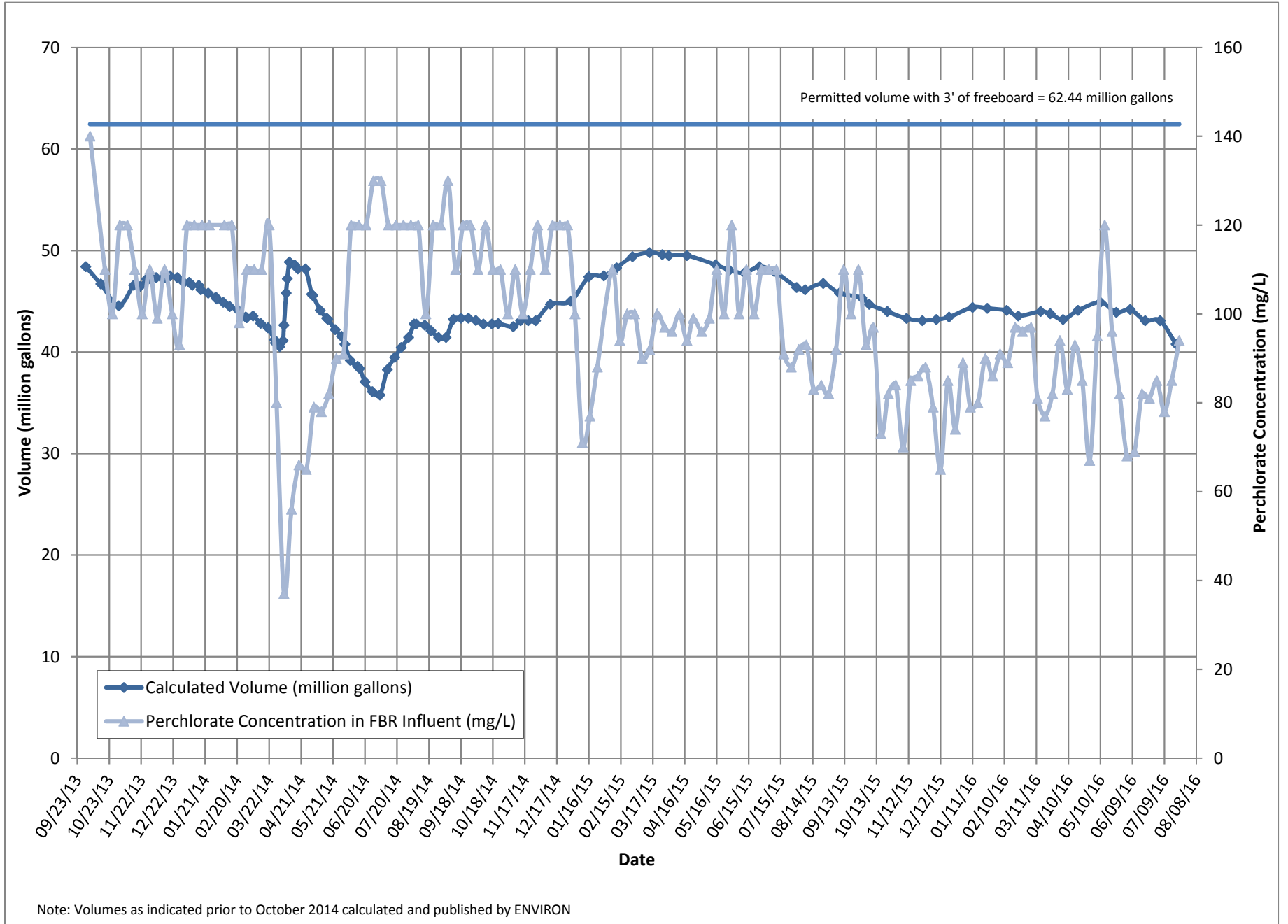
Notes:

Concentrations and flow are presented as monthly average.

1: Flow used in loading calculation is average monthly FBR effluent flow to be consistent with historical loading calculations.

2: FBR loading calculated as $[(0.9 \times \text{NO}_3 \text{ as N} + 0.17 \times \text{ClO}_3 + 0.18 \times \text{ClO}_4) \times \text{Flow} \times 1440 / 1000000 \times 8.34]$.

Figure 1 - GW-11 Pond Volume and Perchlorate Concentration



Note: Volumes as indicated prior to October 2014 calculated and published by ENVIRON

Figure 2 - FBR Equivalent Loading Calculation

