

Nevada Environmental Response Trust   Groundwater Extraction and Treatment System   Enhanced Operational Metrics																											
Date	LS #1 Flow (gpm)	East Well (PC-116R)		Center Well (PC99R3)		West Well (PC-115R)		PC 117		PC 118		PC 119		PC 120		PC 121		PC 133									
		Flow (gpm)	Water Elevation (ft amsl)	Flow (gpm)	Water Elevation (ft amsl)	Flow <sup>2</sup> (gpm)	Water Elevation (ft amsl)	Flow (gpm)	Water Elevation (ft amsl)	Flow <sup>2</sup> (gpm)	Water Elevation (ft amsl)	Flow <sup>2</sup> (gpm)	Water Elevation (ft amsl)	Flow (gpm)	Water Elevation (ft amsl)	Flow (gpm)	Water Elevation (ft amsl)	Flow (gpm)	Water Elevation (ft amsl)								
06/01/16	575	153	1538.9	70	1541.0	96	1543.9	119	1538.4	70	1547.0	61	1548.6	0	1550.6	0	1550.4	7	1520.0								
06/02/16	572	153	1538.9	70	1540.8	96	1543.9	118	1538.4	69	1547.0	60	1548.6	0	1550.6	0	1550.3	7	1520.0								
06/03/16	572	153	1538.9	69	1540.8	96	1543.9	118	1538.4	69	1547.0	60	1548.6	0	1550.5	0	1550.3	7	1520.0								
06/04/16	573	153	1538.8	70	1540.9	95	1543.9	117	1538.3	69	1547.0	60	1548.6	0	1550.5	0	1550.3	7	1520.0								
06/05/16	569	151	1538.8	69	1541.1	95	1543.9	117	1538.3	69	1547.0	60	1548.5	0	1550.5	0	1550.3	7	1520.0								
06/06/16	569	150	1538.8	70	1541.0	95	1543.9	118	1538.3	70	1547.0	60	1548.5	0	1550.5	0	1550.3	7	1520.0								
06/07/16	558	149	1538.8	70	1541.2	96	1543.9	118	1538.3	69	1547.0	49	1548.5	0	1550.5	0	1550.3	8	1520.0								
06/08/16	552	150	1538.8	71	1541.0	95	1543.9	117	1538.3	70	1547.1	41	1548.9	0	1550.6	0	1550.4	8	1520.0								
06/09/16	547	148	1538.9	70	1540.9	95	1544.0	117	1538.4	69	1547.1	40	1548.9	0	1550.6	0	1550.4	8	1520.0								
06/10/16	549	149	1538.9	71	1541.0	95	1544.0	117	1538.4	69	1547.1	41	1548.9	0	1550.6	0	1550.4	8	1520.0								
06/11/16	557	149	1538.8	70	1540.7	103	1544.0	117	1538.3	69	1547.1	41	1548.9	0	1550.6	0	1550.4	8	1520.0								
06/12/16	503	150	1538.8	71	1540.6	43	1544.0	117	1538.3	68	1547.1	40	1548.9	0	1550.7	0	1550.4	13	1520.0								
06/13/16	531	151	1539.3	71	1541.1	75	1547.2	117	1538.6	68	1547.7	40	1549.3	0	1551.0	0	1550.6	9	1520.0								
06/14/16	556	150	1539.0	70	1541.0	103	1544.0	117	1538.4	68	1547.2	40	1549.0	0	1550.7	0	1550.7	7	1520.0								
06/15/16	551	147	1538.9	71	1540.8	102	1543.9	117	1538.3	68	1547.2	40	1549.0	0	1550.7	0	1550.5	7	1520.0								
06/16/16	554	146	1538.9	71	1540.9	103	1543.9	117	1538.3	69	1547.2	40	1549.0	0	1550.7	0	1550.4	7	1520.0								
06/17/16	559	147	1538.9	74	1540.8	100	1543.9	117	1538.3	73	1547.1	41	1548.9	0	1550.7	0	1550.4	7	1520.0								
06/18/16	559	146	1538.8	73	1541.0	103	1525.0	117	1538.2	74	1547.1	41	1548.9	0	1550.7	0	1550.4	6	1520.0								
06/19/16	560	147	1538.8	74	1541.1	103	1525.0	117	1538.2	73	1547.1	41	1548.9	0	1550.6	0	1550.4	7	1520.0								
06/20/16	562	147	1538.8	73	1540.8	103	1525.0	117	1538.2	74	1547.1	41	1548.9	0	1550.6	0	1550.4	7	1520.0								
06/21/16	560	146	1538.8	73	1540.8	102	1525.0	117	1538.2	73	1547.1	42	1548.9	0	1550.6	0	1550.4	7	1520.0								
06/22/16	560	147	1538.8	73	1540.7	102	1525.0	117	1538.2	73	1547.1	41	1548.9	0	1550.6	0	1550.4	7	1520.0								
06/23/16	567	146	1538.7	73	1541.0	103	1525.0	117	1538.2	73	1547.1	41	1548.9	0	1550.6	0	1550.3	7	1520.0								
06/24/16	594	153	1538.7	70	1540.8	100	1525.0	119	1538.2	70	1547.1	41	1548.9	0	1550.6	0	1550.3	7	1520.0								
06/25/16	581	153	1538.7	69	1541.1	99	1525.0	118	1538.1	69	1547.0	40	1548.9	0	1550.6	0	1550.3	7	1520.0								
06/26/16	553	153	1538.7	70	1540.8	99	1525.0	119	1538.1	69	1547.0	41	1548.9	0	1550.6	0	1550.3	7	1520.0								
06/27/16	538	153	1538.7	69	1541.0	99	1525.0	118	1538.1	70	1547.0	40	1548.8	0	1550.6	0	1550.3	7	1520.0								
06/28/16	552	150	1538.7	69	1541.0	97	1525.0	117	1538.1	69	1547.0	40	1548.8	0	1550.6	0	1550.3	7	1520.0								
06/29/16	525	151	1538.6	68	1540.7	97	1525.0	117	1538.1	68	1547.0	40	1548.8	0	1550.6	0	1550.3	7	1520.0								
06/30/16	545	146	1538.6	68	1540.9	97	1525.0	116	1538.1	67	1547.0	39	1548.8	0	1550.5	0	1550.3	7	1520.0								
Monthly Average	557	150	1538.8	71	1540.9	96	1535.8	117	1538.3	70	1547.1	45	1548.8	0	1550.6	0	1550.4	7	1520.0								
Analytical <sup>1</sup>	Conc (mg/L)		Date	Conc (mg/L)		Date	Conc (mg/L)		Date	Conc (mg/L)		Date	Conc (mg/L)		Date	Conc (mg/L)		Date	Conc (mg/L)		Date						
Perchlorate	15		6/13/2016	18		6/13/2016	17		6/13/2016	6.7		6/13/2016	5.1		6/13/2016	0.56		6/13/2016	0.0070		6/13/2016	ND		6/13/2016	0.69		6/13/2016
Hexavalent Chromium	0.0012		6/13/2016	ND		6/13/2016	ND		6/13/2016	0.0028		6/13/2016	ND		6/13/2016	ND		6/13/2016	ND		6/13/2016	ND		6/13/2016	ND		6/13/2016
Total Chromium	ND		6/13/2016	ND		6/13/2016	ND		6/13/2016	0.0031		6/13/2016	ND		6/13/2016	ND		6/13/2016	ND		6/13/2016	ND		6/13/2016	ND		6/13/2016

Notes:  
 Flow reported as gpm is a daily average calculated from the totalizer reading.  
 NA = Not Available; ND = Not detected above laboratory method detection limit (ClO<sub>4</sub> = 0.5 ug/L; Cr(TR)=2.5 ug/L, Cr(VI) = 1 ug/L).  
 1: Analytical results are reported from TestAmerica.  
 2: Pump motor replaced on 06/13.  
 3: Flow decreased at the direction of the Trust on 06/07.

Table 2 - Athens Well Field (AWF) Operational Metrics

Nevada Environmental Response Trust   Groundwater Extraction and Treatment System   Enhanced Operational Metrics																	
Date	LS #3 Flow (gpm)	ART 1A/1B		ART 2A/2B		ART 3A/3B		ART 4A/4B		ART 6/9		ART 7A/7B		ART 8A/8B		PC-150	
		Flow (gpm)	Water Elevation (ft amsl)	Flow <sup>4</sup> (gpm)	Water Elevation (ft amsl)	Flow (gpm)	Water Elevation (ft amsl)	Flow (gpm)	Water Elevation (ft amsl)	Flow (gpm)	Water Elevation (ft amsl)	Flow (gpm)	Water Elevation (ft amsl)	Flow (gpm)	Water Elevation (ft amsl)	Flow (gpm)	Water Elevation (ft amsl)
06/01/16	234	0	1591.9	59	1591.2	59	1587.9	14	1575.0	59	1581.6	8	1584.4	59	1587.4	3	1585.0
06/02/16 <sup>3</sup>	234	0	1591.9	59	1591.2	59	1587.9	13	1575.0	59	1581.7	12	1584.6	59	1587.4	3	1584.1
06/03/16	235	0	1591.9	61	1591.2	47	1587.9	9	1575.0	67	1581.7	15	1584.7	62	1587.4	3	1584.8
06/04/16	234	0	1591.9	61	1591.2	47	1587.9	9	1575.0	67	1581.7	14	1584.8	62	1587.5	3	1584.6
06/05/16	235	0	1592.0	62	1591.2	48	1587.9	9	1575.0	67	1581.8	14	1584.9	62	1587.5	3	1584.4
06/06/16	235	0	1592.0	61	1591.2	47	1587.9	10	1575.0	68	1581.8	14	1585.0	62	1587.5	3	1584.1
06/07/16	244	0	1592.0	73	1591.2	48	1587.9	9	1575.0	67	1581.9	14	1585.1	62	1587.5	3	1584.1
06/08/16	235	0	1591.9	82	1590.9	48	1587.9	9	1575.0	66	1581.9	14	1585.1	62	1587.4	4	1584.2
06/09/16	234	0	1591.8	81	1590.9	47	1587.9	8	1575.0	67	1581.9	14	1585.2	61	1587.4	3	1584.7
06/10/16	234	0	1591.8	83	1590.9	48	1587.8	7	1575.0	67	1581.9	14	1585.2	62	1587.3	4	1584.8
06/11/16	238	0	1591.8	82	1590.8	47	1587.8	7	1575.0	67	1582.0	14	1585.3	62	1587.3	3	1584.3
06/12/16	234	0	1591.8	81	1590.8	48	1587.8	8	1575.0	67	1582.0	15	1585.3	63	1587.3	3	1584.2
06/13/16	235	0	1591.8	81	1590.8	47	1587.8	7	1575.0	63	1582.0	14	1585.4	61	1587.3	4	1584.7
06/14/16	234	0	1591.8	81	1590.8	48	1587.8	8	1575.0	68	1582.0	14	1585.5	59	1587.6	3	1584.8
06/15/16	234	0	1591.8	81	1590.8	48	1587.8	8	1575.0	66	1582.0	14	1585.5	59	1587.3	3	1583.8
06/16/16	234	0	1591.8	81	1590.8	48	1587.8	8	1575.0	66	1582.0	14	1585.5	59	1587.3	3	1584.8
06/17/16	234	0	1591.8	81	1590.8	48	1587.8	8	1575.0	66	1582.1	15	1585.6	59	1587.3	4	1584.5
06/18/16	234	0	1591.8	80	1590.8	47	1587.8	9	1575.0	66	1582.1	14	1585.6	59	1587.3	3	1584.3
06/19/16	235	0	1591.8	81	1590.8	48	1587.8	9	1575.0	66	1582.1	15	1585.6	59	1587.3	3	1584.5
06/20/16	234	0	1591.8	81	1590.8	48	1587.8	10	1575.0	66	1582.1	14	1585.6	59	1587.3	3	1584.9
06/21/16	234	0	1591.8	88	1590.8	47	1587.8	9	1575.0	66	1582.1	15	1585.7	59	1587.3	3	1584.3
06/22/16	235	0	1591.7	87	1590.8	47	1587.8	8	1575.0	65	1582.1	14	1585.7	59	1587.3	3	1584.8
06/23/16	234	0	1591.7	88	1590.8	48	1587.8	9	1575.0	68	1582.2	14	1585.7	59	1587.3	3	1584.5
06/24/16	235	0	1591.7	88	1590.8	48	1587.8	9	1575.0	73	1582.2	15	1585.7	58	1587.3	4	1584.3
06/25/16	234	0	1591.7	88	1590.8	47	1587.8	9	1575.0	73	1582.2	14	1585.7	59	1587.2	3	1584.1
06/26/16	235	0	1591.7	88	1590.7	48	1587.8	8	1575.0	72	1582.2	15	1585.7	59	1587.2	3	1584.1
06/27/16	234	0	1591.7	88	1591.7	47	1587.8	9	1575.0	73	1582.2	15	1585.7	58	1587.2	3	1585.0
06/28/16	235	0	1591.7	88	1590.7	47	1587.8	9	1575.0	73	1582.2	14	1585.8	58	1587.2	3	1584.9
06/29/16	234	0	1591.7	88	1590.7	48	1587.8	9	1575.0	73	1582.2	14	1585.8	59	1587.2	3	1584.9
06/30/16	252	0	1591.7	88	1590.7	48	1587.8	8	1575.0	72	1582.2	18	1585.8	58	1587.2	4	1583.9
Monthly Average	235	0	1591.8	79	1590.9	48	1587.8	9	1575.0	67	1582.0	14	1585.4	60	1587.3	4	1584.5
Analytical <sup>1</sup>	Conc (mg/L)	Date	Conc (mg/L)	Date	Conc (mg/L)	Date	Conc (mg/L)	Date	Conc (mg/L) <sup>2</sup>	Date	Conc (mg/L)	Date	Conc (mg/L)	Date	Conc (mg/L)	Date	
Perchlorate	22	6/9/2016	24	6/9/2016	180	6/9/2016	250	6/9/2016	240	6/9/2016	110	6/9/2016	100	6/9/2016	220	6/9/2016	
Hexavalent Chromium	0.001	6/9/2016	ND	6/9/2016	0.233	6/9/2016	0.469	6/9/2016	0.899	6/9/2016	0.67	6/9/2016	0.09	6/9/2016	0.412	6/9/2016	
Total Chromium	0.013	6/9/2016	0.0073	6/9/2016	0.24	6/9/2016	0.47	6/9/2016	0.84	6/9/2016	0.54	6/9/2016	0.085	6/9/2016	0.36	6/9/2016	

Notes:  
 Flow reported as gpm is a daily average calculated from the totalizer reading. NA = Not Available.  
 1: Analytical results are reported from TestAmerica.  
 2: Concentrations reported for ART-9.  
 3: Totalizer reset for the AWF on 06/02.  
 4: Flow increased at the direction of the Trust on 06/07.

Nevada Environmental Response Trust   Groundwater Extraction and Treatment System   Enhanced Operational Metrics																				
Date	I-AR		I-AA		I-AB		I-AC		I-AD		I-B		I-C		I-D		I-E		I-F	
	Flow (gpm)	Water Elevation (ft amsl)	Flow <sup>3</sup> (gpm)	Water Elevation (ft amsl)	Flow <sup>3</sup> (gpm)	Water Elevation (ft amsl)	Flow (gpm)	Water Elevation (ft amsl)	Flow (gpm)	Water Elevation (ft amsl)	Flow <sup>3</sup> (gpm)	Water Elevation (ft amsl)	Flow <sup>3</sup> (gpm)	Water Elevation (ft amsl)	Flow <sup>4</sup> (gpm)	Water Elevation (ft amsl)	Flow <sup>4</sup> (gpm)	Water Elevation (ft amsl)	Flow (gpm)	Water Elevation (ft amsl)
06/01/16	0.20	1728.6	0.94	1708.0	0.12	1721.0	0.00	1723.4	0.00	1725.1	0.90	1709.6	3.75	1712.2	3.75	1708.0	1.74	1708.8	3.75	1717.8
06/02/16	0.29	1727.9	0.94	1708.0	0.12	1721.0	0.00	1723.4	0.00	1725.1	0.93	1709.4	3.75	1713.4	3.75	1707.5	1.22	1713.7	3.75	1717.8
06/03/16	0.47	1727.8	0.94	1708.0	0.12	1721.0	0.00	1723.4	0.00	1725.1	0.93	1709.4	3.75	1713.7	3.75	1708.6	0.94	1713.7	3.75	1717.8
06/04/16	0.47	1727.7	0.94	1708.0	0.12	1721.0	0.00	1723.4	0.00	1725.1	0.93	1709.4	3.75	1714.3	3.75	1709.2	0.94	1713.8	3.75	1717.8
06/05/16	0.35	1727.6	0.94	1708.0	0.12	1721.1	0.00	1723.4	0.00	1725.1	0.93	1709.4	3.75	1714.8	3.75	1710.7	0.94	1713.9	3.75	1717.8
06/06/16	0.47	1727.7	0.95	1708.0	0.13	1721.1	0.00	1723.4	0.00	1725.1	0.92	1709.4	3.75	1714.8	3.75	1711.6	0.88	1714.0	3.75	1717.9
06/07/16	0.17	1727.7	0.94	1708.0	0.13	1721.1	0.00	1723.4	0.00	1725.1	0.93	1709.5	3.77	1714.9	3.75	1713.1	0.94	1714.4	3.75	1718.0
06/08/16	0.60	1727.8	0.98	1708.0	0.12	1721.0	0.00	1723.4	0.03	1725.1	0.93	1709.4	3.72	1714.9	3.75	1714.6	0.94	1714.5	3.74	1718.0
06/09/16	0.41	1728.6	0.99	1708.0	0.13	1721.0	0.00	1723.4	0.00	1725.1	0.85	1709.5	3.75	1717.0	3.75	1718.9	0.94	1714.6	3.75	1718.1
06/10/16	0.47	1724.1	1.12	1708.0	0.12	1721.0	0.00	1723.4	0.00	1725.1	0.92	1709.4	3.75	1717.1	3.75	1720.6	0.94	1714.6	3.75	1718.1
06/11/16	0.47	1723.8	1.14	1708.0	0.12	1721.0	0.00	1723.4	0.00	1725.1	0.93	1709.4	3.75	1717.2	3.75	1721.0	0.94	1714.7	3.75	1718.2
06/12/16	0.47	1723.9	1.14	1708.0	0.13	1721.0	0.00	1723.4	0.00	1725.1	0.94	1709.5	3.75	1717.3	3.75	1721.3	0.94	1714.7	3.75	1718.3
06/13/16	0.47	1723.9	1.05	1708.0	0.13	1721.0	0.00	1723.4	0.00	1725.1	0.93	1709.4	3.75	1717.3	3.75	1721.4	0.94	1714.8	3.75	1718.3
06/14/16	0.47	1723.8	0.98	1708.0	0.13	1721.1	0.00	1723.4	0.00	1725.1	0.94	1709.4	3.75	1717.4	3.75	1721.5	0.94	1714.8	3.75	1718.4
06/15/16	0.47	1723.8	0.98	1708.0	0.13	1721.1	0.00	1723.4	0.00	1725.1	0.96	1709.4	3.75	1717.5	3.75	1721.6	1.69	1714.9	5.17	1718.4
06/16/16	0.47	1723.7	1.01	1708.0	0.13	1721.0	0.00	1723.4	0.00	1725.1	0.88	1709.4	3.75	1711.9	3.75	1721.5	1.73	1714.9	7.50	1718.4
06/17/16	0.47	1724.0	1.00	1708.0	0.13	1721.0	0.00	1723.4	0.00	1725.1	0.91	1709.4	3.73	1713.0	3.73	1721.3	1.86	1714.9	7.43	1718.4
06/18/16	0.47	1725.2	1.01	1708.0	0.13	1721.0	0.00	1723.4	0.00	1725.1	0.92	1709.4	3.75	1718.6	3.75	1721.3	1.87	1715.0	7.50	1718.5
06/19/16	0.47	1724.4	1.00	1708.0	0.13	1721.0	0.00	1723.4	0.00	1725.1	0.91	1709.5	3.74	1718.8	3.75	1721.4	1.88	1715.0	7.50	1718.5
06/20/16	0.47	1724.4	1.05	1708.0	0.12	1721.0	0.00	1723.4	0.00	1725.1	0.93	1709.4	3.74	1718.8	3.75	1721.5	1.88	1715.0	7.50	1718.5
06/21/16	0.47	1724.2	1.06	1708.0	0.12	1721.0	0.00	1723.4	0.00	1725.1	0.93	1709.4	3.74	1718.8	3.75	1721.6	1.87	1715.0	7.50	1718.6
06/22/16 <sup>2</sup>	0.47	1724.4	1.01	1708.0	0.13	1721.0	0.00	1723.4	0.00	1725.1	0.92	1709.6	3.74	1718.9	3.75	1721.6	1.83	1715.0	7.16	1718.6
06/23/16	0.48	1724.2	1.25	1708.0	0.17	1721.0	0.00	1723.4	0.00	1725.1	0.61	1709.4	2.05	1719.0	2.15	1721.6	0.96	1715.0	4.57	1718.6
06/24/16	0.48	1724.5	1.25	1708.0	0.17	1721.0	0.00	1723.4	0.00	1725.1	0.56	1709.4	2.04	1719.0	2.14	1721.7	0.95	1715.0	4.57	1718.6
06/25/16	0.48	1724.6	1.25	1708.0	0.17	1721.1	0.00	1723.4	0.00	1725.1	0.56	1709.9	2.07	1719.1	2.11	1721.7	0.94	1715.0	4.57	1718.6
06/26/16	0.48	1724.2	1.25	1708.0	0.17	1721.1	0.00	1723.4	0.00	1725.1	0.61	1709.4	2.02	1719.1	2.11	1721.7	0.93	1715.1	4.57	1718.6
06/27/16	0.48	1724.5	0.07	1708.0	0.00	1721.1	0.00	1723.4	0.00	1725.1	0.09	1709.4	0.72	1719.2	2.11	1721.7	0.93	1715.1	4.65	1718.7
06/28/16	0.48	1724.6	0.00	1708.1	0.00	1710.0	0.00	1723.4	0.00	1725.1	0.00	1708.0	0.00	1710.0	2.11	1721.8	0.93	1715.1	4.69	1718.7
06/29/16	0.48	1724.6	0.00	1708.0	0.00	1710.0	0.00	1723.4	0.00	1725.1	0.00	1708.0	0.00	1710.0	2.10	1721.9	0.91	1715.1	4.69	1718.7
06/30/16	0.44	1724.8	0.89	1708.0	0.00	1710.0	0.00	1723.4	0.00	1725.1	0.28	1708.0	0.64	1710.0	0.00	1722.2	0.21	1715.2	4.69	1718.7
Monthly Average	0.44	1725.4	0.94	1708.0	0.11	1719.9	0.00	1723.4	0.00	1725.1	0.77	1709.3	3.07	1715.9	3.24	1718.5	1.18	1714.5	4.89	1718.3
Analytical <sup>1</sup>	Conc (mg/L)	Date	Conc (mg/L)	Date	Conc (mg/L)	Date	Conc (mg/L)	Date	Conc (mg/L)	Date	Conc (mg/L)	Date	Conc (mg/L)	Date	Conc (mg/L)	Date	Conc (mg/L)	Date	Conc (mg/L)	Date
Perchlorate	2000	6/13/2016	82	6/13/2016	220	6/13/2016	120	6/8/2016	120	6/8/2016	370	6/13/2016	630	6/13/2016	680	6/13/2016	540	6/13/2016	730	6/13/2016
Hexavalent Chromium	0.087	6/13/2016	0.049	6/13/2016	ND	6/13/2016	1.53	6/8/2016	0.136	6/8/2016	0.094	6/13/2016	3.39	6/13/2016	5.22	6/13/2016	8.12	6/13/2016	11.4	6/13/2016
Total Chromium	0.34	6/13/2016	0.067	6/13/2016	0.0041	6/13/2016	0.83	6/8/2016	0.97	6/8/2016	0.11	6/13/2016	3.0	6/13/2016	5.8	6/13/2016	7.4	6/13/2016	11	6/13/2016

Notes:  
 Flow reported as gpm is a daily average calculated from the totalizer reading. NA=Not Available.  
 1: Analytical results are reported from TestAmerica.  
 2: All well field totalizers reset.  
 3: Well off for optimization testing by Ramboll starting 06/27.  
 4: Well off for optimization testing by Ramboll starting 06/30.

Nevada Environmental Response Trust   Groundwater Extraction and Treatment System   Enhanced Operational Metrics																				
Date	I-G		I-H		I-I		I-J		I-K		I-L		I-M		I-N		I-O		I-P	
	Flow <sup>1</sup> (gpm)	Water Elevation (ft amsl)	Flow (gpm)	Water Elevation (ft amsl)	Flow (gpm)	Water Elevation (ft amsl)	Flow (gpm)	Water Elevation (ft amsl)	Flow (gpm)	Water Elevation (ft amsl)	Flow <sup>3</sup> (gpm)	Water Elevation (ft amsl)	Flow <sup>4</sup> (gpm)	Water Elevation (ft amsl)	Flow <sup>4</sup> (gpm)	Water Elevation (ft amsl)	Flow (gpm)	Water Elevation (ft amsl)	Flow (gpm)	Water Elevation (ft amsl)
06/01/16	0.23	1715.0	0.94	1716.0	7.50	1721.2	7.50	1707.0	3.75	1713.3	1.87	1711.4	1.88	1719.4	3.92	1712.2	0.94	1721.4	1.88	1719.3
06/02/16	0.23	1710.9	0.94	1715.7	7.50	1721.2	7.50	1707.0	3.75	1713.2	1.87	1711.3	1.87	1719.6	3.75	1712.4	0.94	1721.4	1.36	1719.3
06/03/16	0.23	1711.0	0.94	1715.7	7.50	1721.2	7.50	1707.0	3.75	1713.3	1.88	1711.2	1.88	1719.6	3.75	1717.2	0.94	1721.4	1.27	1719.4
06/04/16	0.23	1710.9	0.94	1715.6	7.50	1721.2	7.50	1707.0	3.75	1713.2	1.88	1711.3	1.88	1719.7	3.75	1717.8	0.94	1721.4	1.07	1719.4
06/05/16	0.23	1711.0	0.94	1715.7	7.50	1721.3	7.50	1707.0	3.75	1713.3	1.88	1711.3	1.88	1719.7	3.75	1718.2	0.94	1721.4	0.61	1719.4
06/06/16	0.23	1711.0	0.94	1717.1	7.50	1722.9	7.50	1707.0	3.75	1713.3	1.88	1712.1	1.88	1719.7	3.75	1718.4	0.93	1721.6	0.76	1719.6
06/07/16	0.23	1711.0	0.94	1718.0	7.50	1723.0	7.50	1707.0	3.75	1713.3	1.88	1713.2	1.87	1719.8	3.75	1720.5	0.94	1721.7	2.52	1719.8
06/08/16	0.23	1711.0	0.94	1717.7	6.48	1723.0	9.57	1707.0	3.75	1713.4	1.87	1711.3	1.87	1719.9	3.75	1720.6	0.94	1721.6	3.75	1717.7
06/09/16	0.23	1711.0	0.94	1716.7	7.50	1722.0	5.41	1707.0	3.75	1713.5	1.87	1711.5	1.87	1720.4	3.75	1720.7	0.94	1721.5	3.75	1717.9
06/10/16	0.23	1711.0	0.94	1715.3	7.50	1721.7	7.50	1707.0	3.75	1713.6	1.88	1711.4	1.88	1720.5	3.75	1720.6	0.94	1721.4	3.75	1717.2
06/11/16	0.23	1711.0	0.94	1713.5	7.50	1721.5	7.50	1707.0	3.75	1713.5	1.87	1711.9	1.87	1720.6	3.75	1720.8	0.94	1721.3	3.75	1717.2
06/12/16	0.23	1711.0	0.94	1711.7	7.50	1721.5	7.50	1707.0	3.75	1713.5	1.88	1712.6	1.88	1720.7	3.75	1721.0	0.94	1721.3	3.75	1716.5
06/13/16	0.23	1711.0	0.94	1711.0	7.50	1721.4	7.50	1707.0	3.75	1713.5	1.88	1713.2	1.88	1720.8	3.75	1721.1	0.94	1721.2	3.75	1713.1
06/14/16	0.23	1711.0	0.94	1709.5	7.50	1721.4	7.50	1707.0	3.75	1713.5	1.88	1714.2	1.88	1720.9	3.75	1721.2	0.94	1721.2	3.75	1711.0
06/15/16	0.23	1711.0	0.94	1709.5	7.50	1721.4	7.50	1707.0	3.75	1713.5	1.87	1714.4	1.87	1720.9	3.75	1721.3	0.94	1721.2	3.75	1709.7
06/16/16	0.23	1711.0	0.94	1709.5	7.50	1721.3	6.21	1707.0	3.75	1713.4	1.88	1713.5	2.52	1718.7	3.75	1717.3	0.94	1721.2	3.75	1709.1
06/17/16	0.23	1711.0	0.93	1709.5	7.45	1721.3	7.32	1707.0	3.73	1713.4	1.86	1713.4	3.73	1718.7	3.73	1718.2	0.93	1721.2	3.72	1709.1
06/18/16	0.23	1710.9	1.56	1709.5	7.50	1721.3	7.29	1707.0	3.75	1713.5	1.87	1714.5	3.75	1719.0	3.75	1720.4	0.94	1721.2	3.75	1715.3
06/19/16	0.23	1711.0	1.87	1709.5	7.50	1721.3	7.26	1707.0	3.75	1713.5	1.88	1714.8	3.75	1719.1	3.75	1720.6	0.94	1721.2	3.75	1715.9
06/20/16	0.23	1711.0	1.87	1709.5	7.50	1721.3	7.23	1707.0	3.75	1713.5	1.88	1715.9	3.75	1719.1	3.75	1720.6	0.94	1721.1	3.75	1716.2
06/21/16	0.23	1711.0	1.87	1709.5	7.50	1721.3	7.19	1707.0	3.75	1713.5	1.87	1716.3	3.75	1719.3	3.75	1720.8	0.94	1721.1	3.75	1716.4
06/22/16 <sup>2</sup>	0.23	1710.9	1.43	1709.4	7.49	1721.3	7.14	1707.0	3.75	1713.5	1.87	1716.3	3.30	1719.4	3.75	1721.0	0.94	1721.1	3.75	1716.2
06/23/16	0.15	1711.0	1.05	1709.5	4.95	1721.3	6.82	1707.0	3.16	1713.4	1.55	1716.2	2.45	1719.4	3.73	1721.1	0.55	1721.1	2.53	1716.8
06/24/16	0.15	1711.0	1.06	1709.5	4.94	1721.3	8.88	1707.0	3.16	1713.5	1.54	1716.3	2.46	1719.5	3.73	1721.1	0.54	1721.1	2.54	1716.8
06/25/16	0.15	1711.0	1.07	1709.5	4.93	1721.3	10.08	1707.0	3.16	1713.5	1.55	1716.5	2.46	1719.5	3.74	1721.2	0.56	1721.1	2.55	1716.7
06/26/16	0.15	1711.0	1.05	1709.4	4.93	1721.3	10.08	1707.0	3.17	1713.5	1.54	1716.6	2.46	1719.6	3.75	1721.3	0.55	1721.1	2.53	1716.7
06/27/16	0.15	1711.0	1.01	1709.4	4.92	1721.3	9.89	1707.0	3.16	1713.5	0.26	1716.6	2.45	1719.6	3.74	1721.4	0.54	1721.1	2.50	1716.7
06/28/16	0.15	1711.0	1.04	1709.5	4.92	1721.3	9.84	1707.0	3.16	1713.6	0.00	1709.0	2.40	1719.8	3.74	1721.4	0.55	1721.1	2.53	1716.7
06/29/16	0.15	1710.9	1.04	1709.4	4.92	1721.3	9.85	1707.0	3.10	1713.3	0.00	1709.0	2.41	1720.0	3.75	1721.5	0.54	1721.1	2.49	1716.8
06/30/16	0.07	1711.0	1.11	1709.5	4.92	1721.3	7.58	1707.0	3.05	1713.6	0.72	1709.0	0.07	1720.2	0.70	1721.7	0.56	1721.2	2.62	1716.8
Monthly Average	0.21	1711.1	1.10	1712.0	6.78	1721.5	7.84	1707.0	3.59	1713.4	1.61	1713.2	2.33	1719.8	3.65	1719.8	0.83	1721.3	2.87	1716.3
Analytical <sup>1</sup>	Conc (mg/L)	Date	Conc (mg/L)	Date	Conc (mg/L)	Date	Conc (mg/L)	Date	Conc (mg/L)	Date	Conc (mg/L)	Date	Conc (mg/L)	Date	Conc (mg/L)	Date	Conc (mg/L)	Date	Conc (mg/L)	Date
Perchlorate	1700	6/13/2016	1600	6/13/2016	770	6/8/2016	310	6/8/2016	220	6/8/2016	910	6/13/2016	640	6/13/2016	740	6/13/2016	1000	6/13/2016	1600	6/13/2016
Hexavalent Chromium	20	6/13/2016	20.1	6/13/2016	14.7	6/8/2016	3.78	6/8/2016	3.88	6/8/2016	6.13	6/13/2016	7.93	6/13/2016	8.93	6/13/2016	18.7	6/13/2016	19.7	6/13/2016
Total Chromium	21	6/13/2016	23	6/13/2016	10	6/8/2016	3.4	6/8/2016	2.0	6/8/2016	0.72	6/13/2016	7.5	6/13/2016	7.8	6/13/2016	21	6/13/2016	21	6/13/2016

Notes:  
 Flow reported as gpm is a daily average calculated from the totalizer reading. NA=Not Available.  
 1: Analytical results are reported from TestAmerica.  
 2: All well field totalizers reset.  
 3: Well off for optimization testing by Ramboll starting 06/27.  
 4: Well off for optimization testing by Ramboll starting 06/30.

Table 3 - Interceptor Well Field (IWF) Operational Metrics

Nevada Environmental Response Trust   Groundwater Extraction and Treatment System   Enhanced Operational Metrics																				
Date	I-Q		I-R		I-S		I-T		I-U		I-V		I-W		I-X		I-Y		I-Z	
	Flow (gpm)	Water Elevation (ft amsl)	Flow <sup>3</sup> (gpm)	Water Elevation (ft amsl)	Flow (gpm)	Water Elevation (ft amsl)	Flow (gpm)	Water Elevation (ft amsl)	Flow (gpm)	Water Elevation (ft amsl)	Flow (gpm)	Water Elevation (ft amsl)	Flow (gpm)	Water Elevation (ft amsl)	Flow <sup>4</sup> (gpm)	Water Elevation (ft amsl)	Flow <sup>3</sup> (gpm)	Water Elevation (ft amsl)	Flow (gpm)	Water Elevation (ft amsl)
06/01/16	0.94	1711.6	1.87	1709.4	3.75	1710.0	0.47	1705.1	0.94	1707.2	3.75	1719.0	0.94	1719.7	1.88	1708.1	0.20	1720.6	7.50	1710.0
06/02/16	0.94	1711.6	1.87	1708.8	3.75	1710.0	0.47	1705.1	0.94	1707.2	3.75	1719.0	0.94	1719.7	1.87	1709.5	0.40	1709.5	7.50	1710.0
06/03/16	0.94	1711.6	1.88	1711.7	3.75	1710.0	0.47	1705.1	0.94	1707.3	3.75	1719.0	0.93	1719.7	1.88	1709.5	0.40	1709.5	7.50	1710.0
06/04/16	0.94	1711.6	1.87	1714.7	3.75	1710.0	0.47	1705.1	0.94	1707.4	3.75	1719.0	0.94	1719.5	1.87	1709.2	0.40	1709.2	7.50	1710.0
06/05/16	0.94	1711.6	1.88	1715.7	3.75	1710.0	0.47	1705.1	0.94	1707.3	3.75	1719.0	0.94	1719.4	1.88	1709.6	0.40	1709.6	7.50	1710.0
06/06/16	0.94	1711.6	1.88	1716.2	3.75	1710.0	0.47	1705.1	0.94	1707.3	3.75	1719.7	0.94	1719.6	1.88	1712.3	0.40	1712.3	7.50	1710.0
06/07/16	0.94	1711.6	1.88	1716.2	3.75	1710.0	0.47	1705.1	0.94	1707.3	3.75	1719.9	0.98	1719.8	1.88	1713.6	1.70	1713.6	7.50	1710.0
06/08/16	0.94	1711.6	1.87	1715.4	3.75	1710.0	0.47	1705.1	0.94	1707.3	3.75	1719.9	0.93	1719.0	1.87	1713.5	1.83	1713.5	7.50	1710.0
06/09/16	0.94	1711.6	1.87	1715.8	3.75	1710.0	0.47	1705.1	0.94	1707.3	3.75	1719.5	0.94	1719.0	1.87	1713.6	1.86	1708.2	7.03	1720.6
06/10/16	0.94	1711.6	1.88	1716.0	5.24	1710.0	0.47	1705.1	0.94	1707.4	3.75	1719.3	0.94	1719.0	1.88	1713.6	1.87	1707.9	7.50	1710.0
06/11/16	0.94	1711.6	1.88	1716.3	7.50	1710.0	0.47	1705.1	0.94	1707.3	5.70	1719.1	0.94	1719.0	1.87	1714.0	1.83	1707.9	7.50	1710.0
06/12/16	0.94	1711.6	1.88	1716.3	7.50	1710.0	0.47	1705.1	0.94	1707.3	7.50	1719.0	0.94	1719.0	1.88	1714.0	1.15	1713.9	7.50	1710.0
06/13/16	0.94	1711.5	1.88	1716.3	7.50	1710.0	0.47	1705.1	0.94	1707.3	7.50	1718.9	0.94	1719.0	1.88	1714.1	0.91	1716.0	7.50	1710.0
06/14/16	0.94	1711.6	1.88	1716.2	7.50	1710.0	0.47	1705.1	0.94	1707.4	7.50	1718.9	0.94	1719.0	1.88	1714.3	0.92	1716.1	7.50	1710.0
06/15/16	0.94	1711.6	1.87	1716.3	7.50	1710.0	0.47	1705.1	0.94	1707.2	7.50	1718.9	0.94	1719.0	1.87	1714.3	0.93	1716.4	7.50	1710.0
06/16/16	0.94	1711.6	1.88	1710.8	7.50	1710.0	0.47	1705.1	0.94	1707.3	7.50	1718.8	0.94	1719.0	1.88	1714.3	0.92	1716.1	7.50	1710.0
06/17/16	0.93	1711.6	1.86	1711.7	7.45	1710.0	0.46	1705.1	0.92	1707.3	7.45	1718.8	0.92	1719.0	1.83	1714.2	0.91	1716.5	7.32	1710.0
06/18/16	0.94	1711.6	1.87	1713.1	7.50	1710.0	0.47	1705.1	0.94	1707.5	7.50	1718.8	0.94	1719.0	1.87	1714.4	0.92	1716.6	7.50	1710.0
06/19/16	0.94	1711.6	1.88	1713.7	7.50	1710.0	0.47	1705.1	0.94	1707.4	7.50	1718.8	0.94	1719.0	1.88	1714.4	0.90	1716.6	7.50	1710.0
06/20/16	0.94	1711.6	1.88	1714.2	7.50	1710.0	0.47	1705.1	0.94	1707.4	7.50	1718.8	0.94	1719.0	1.88	1714.4	0.92	1717.3	7.50	1710.0
06/21/16	0.94	1711.6	1.87	1714.2	7.50	1710.0	0.47	1705.1	0.94	1707.5	7.50	1718.8	0.94	1719.0	1.87	1714.4	0.93	1717.5	7.50	1710.0
06/22/16 <sup>2</sup>	0.94	1711.6	1.87	1714.2	7.49	1710.0	0.47	1705.1	0.94	1707.5	7.49	1718.8	0.94	1719.0	1.87	1714.3	0.92	1717.5	7.47	1710.0
06/23/16	0.62	1711.6	1.55	1714.3	4.77	1710.0	0.50	1705.1	0.84	1707.4	4.28	1718.7	0.94	1719.0	2.07	1714.4	0.96	1717.5	7.15	1710.0
06/24/16	0.62	1711.6	1.51	1714.6	4.80	1710.0	0.50	1705.1	0.84	1707.4	4.29	1718.7	0.94	1719.0	2.08	1714.3	0.90	1717.3	7.24	1710.0
06/25/16	0.62	1711.6	1.53	1714.8	4.82	1710.0	0.50	1705.1	0.84	1707.3	4.33	1718.7	0.93	1719.0	2.11	1714.3	0.91	1717.6	7.17	1710.0
06/26/16	0.62	1711.6	1.52	1715.2	4.87	1710.0	0.50	1705.1	0.84	1707.3	4.33	1718.7	0.93	1719.0	2.11	1714.3	0.83	1718.0	7.22	1710.0
06/27/16	0.62	1711.6	0.00	1715.5	5.23	1710.0	0.50	1705.1	0.84	1707.2	4.28	1718.7	0.93	1719.0	2.11	1714.3	0.00	1718.2	7.11	1710.0
06/28/16	0.62	1711.6	0.00	1717.4	5.87	1710.0	0.50	1705.1	0.83	1707.2	4.22	1718.7	0.93	1719.0	2.11	1714.3	0.00	1705.0	7.23	1710.0
06/29/16	0.62	1711.6	0.00	1717.8	6.23	1710.0	0.50	1705.1	0.84	1707.3	4.22	1718.7	0.94	1719.0	2.11	1714.3	0.00	1705.0	7.20	1710.0
06/30/16	0.63	1711.6	0.00	1718.0	6.26	1710.0	0.50	1705.1	0.84	1707.4	4.22	1718.7	0.94	1719.0	0.87	1714.4	0.00	1705.0	7.28	1710.0
Monthly Average	0.85	1711.6	1.58	1714.7	5.73	1710.0	0.48	1705.1	0.91	1707.3	5.33	1719.0	0.94	1712.2	1.89	1713.3	0.84	1713.5	7.40	1710.0
Analytical <sup>1</sup>	Conc (mg/L)	Date	Conc (mg/L)	Date	Conc (mg/L)	Date	Conc (mg/L)	Date	Conc (mg/L)	Date	Conc (mg/L)	Date	Conc (mg/L)	Date	Conc (mg/L)	Date	Conc (mg/L)	Date	Conc (mg/L)	Date
Perchlorate	1400	6/13/2016	1000	6/13/2016	530	6/13/2016	2000	6/13/2016	2000	6/13/2016	830	6/8/2016	1100	6/13/2016	1100	6/13/2016	1500	6/13/2016	370	6/8/2016
Hexavalent Chromium	20	6/13/2016	0.318	6/13/2016	1.21	6/13/2016	22.7	6/13/2016	22.4	6/13/2016	14.2	6/8/2016	18	6/13/2016	13.5	6/13/2016	0.441	6/13/2016	8.49	6/8/2016
Total Chromium	20	6/13/2016	0.37	6/13/2016	1.3	6/13/2016	23	6/13/2016	20	6/13/2016	16	6/8/2016	22	6/13/2016	11	6/13/2016	0.48	6/13/2016	7.9	6/8/2016

Notes:  
 Flow reported as gpm is a daily average calculated from the totalizer reading. NA = Not Available  
 1: Analytical results are reported from TestAmerica.  
 2: All well field totalizers reset.  
 3: Well off for optimization testing by Ramboll starting 06/27.  
 4: Well off for optimization testing by Ramboll starting 06/30.

Nevada Environmental Response Trust   Groundwater Extraction and Treatment System   Enhanced Operational Metrics																	
Date	LS #2	GWTP Effluent				GW-11 Influent				FBR Plant Influent <sup>1</sup>							
	Flow (gpm)	Flow (gpm)	TA - Cr (TR) (mg/L)	TA - Cr (VI) (mg/L)	TA - ClO <sub>2</sub> (mg/L)	Flow <sup>2</sup> (gpm)	Cr (TR) (mg/L)	Cr (VI) (mg/L)	ClO <sub>2</sub> (mg/L)	Flow <sup>2,3</sup> (gpm)	TA - ClO <sub>2</sub> (mg/L)	ETI - ClO <sub>2</sub> (mg/L)	TA - ClO <sub>2</sub> (mg/L)	TA - SO <sub>4</sub> (mg/L)	TA - NO <sub>3</sub> - N (mg/L)	TA - Cr (TR) (mg/L)	TA - Cr (VI) (mg/L)
06/01/16	821	69				896				907							
06/02/16	821	72	0.13	ND	700	890				908							
06/03/16	829	73				888				937							
06/04/16	830	71				889				920	68						
06/05/16	835	64				888				921							
06/06/16	823	59				888				776							
06/07/16	821	61				885	0.086	0.018	88	1054			130	1,400	8.0	0.046	0.034
06/08/16	821	61				878				921							
06/09/16	837	67	0.25	ND	760	836				864							
06/10/16	917	67				876				891							
06/11/16	937	71				876				904	69						
06/12/16	824	68				815				912							
06/13/16	858	74				855				904				8.8	0.044	0.030	
06/14/16	932	69				881				886							
06/15/16	917	71				525				988							
06/16/16	919	70	0.48	ND	810	450				989							
06/17/16	938	66				30				1004							
06/18/16	938	65				0				1003	82						
06/19/16	924	66				0				990							
06/20/16	897	65				0				961				12	0.060	0.052	
06/21/16	915	66				10				980							
06/22/16	870	65				0				935							
06/23/16	937	33	0.38	ND	770	862				902							
06/24/16	938	104				888				926							
06/25/16	918	70				884				915	81						
06/26/16	938	70				885				913							
06/27/16	937	63				879				886							
06/28/16	938	59				880				896				8.3	0.039	0.024	
06/29/16	907	57				135				964							
06/30/16	854	52	1.3	ND	830	0				906							
Monthly Average	886	66	0.51	ND	774	622	0.086	0.018	88	929	75	76	130	1400	9.3	0.047	0.035

Flow reported as gpm is a daily average calculated from the totalizer reading.  
 ND = Not detected above laboratory method detection limit (ClO<sub>2</sub> = 0.5 ug/L; ClO<sub>3</sub> = 10 ug/L; NO<sub>3</sub>-N = 0.055 mg/L, CR(VI) = 0.25 ug/L); NA = Not Available, sample result not reported.  
 1: ETI = Envirogen internal process control data, TA = TestAmerica data.  
 2: Flows bypassed GW-11 and FBR plant influent totalizers from 06/15 - 06/22 and 06/29 - 06/30 due to FBR plant influent strainers clogging.  
 3: Flows estimated using LS#2 and GWTP for 06/15 - 06/22 and 06/29 - 06/30.

Table 4 - Treatment Plant Operational Metrics

Nevada Environmental Response Trust   Groundwater Extraction and Treatment System   Enhanced Operational Metrics																
Date	1st Stage FBR Influent			2nd Stage FBR Influent			FBR Plant Effluent <sup>1</sup>									
	Flow (gpm)	pH (s.u.)	ORP (mV)	Flow (gpm)	pH (s.u.)	ORP (mV)	Flow (gpm)	TA - ClO <sub>4</sub> (mg/L)	ETI - ClO <sub>2</sub> (mg/L)	TA - ClO <sub>3</sub> (mg/L)	TA - Cr (TR) (mg/L)	TA - Cr (VI) (mg/L)	TA - SO <sub>4</sub> (mg/L)	TA - NO <sub>3</sub> - N (mg/L)	ETI - Turbidity (NTU)	
06/01/16	918	6.7	-408	509	6.4	-384	954		ND						15	
06/02/16	931	6.7	-406	887	6.4	-384	884		ND						7	
06/03/16	928	6.7	-406	579	6.4	-388	916		ND						3	
06/04/16	915	6.7	-407	895	6.4	-389	893	ND							3	
06/05/16	913	6.7	-409	894	6.4	-392	871								2	
06/06/16	908	6.8	-409	889	6.4	-391	872			ND	0.0030	ND	1,400	1.0	3	
06/07/16	907	6.7	-411	901	6.4	-388	866								3	
06/08/16	928	6.7	-410	903	6.4	-394	895								3	
06/09/16	916	6.8	-408	896	6.5	-375	896								3	
06/10/16	900	6.8	-381	376	6.6	-403	906								2	
06/11/16	916	6.8	-375	892	6.5	-401	904	ND							3	
06/12/16	905	6.8	-395	885	6.5	-398	904								2	
06/13/16	916	6.8	-400	850	6.5	-397	850			0.0049	ND		0.20		1	
06/14/16	883	6.8	-403	735	6.5	-394	992								2	
06/15/16	942	6.8	-404	889	6.5	-390	923								11	
06/16/16	903	6.8	-386	880	6.5	-387	942								6	
06/17/16	910	6.7	-389	891	6.4	-385	859								2	
06/18/16	957	6.7	-392	886	6.4	-393	912	ND							4	
06/19/16	951	6.7	-311	897	6.4	-392	983								3	
06/20/16	933	6.7	-349	876	6.4	-395	848			0.0078	ND			ND	4	
06/21/16	924	6.7	-387	891	6.4	-392	864								12	
06/22/16	954	6.7	-392	872	6.4	-394	848								15	
06/23/16	933	6.8	-403	859	6.5	-407	833								5	
06/24/16	910	6.7	-401	865	6.4	-405	868								10	
06/25/16	919	6.6	-399	765	6.4	-403	920	ND							12	
06/26/16	914	6.6	-398	833	6.4	-401	925								13	
06/27/16	867	6.7	-403	816	6.4	-405	925			0.014	ND		0.44		11	
06/28/16	925	6.7	-403	713	6.4	-407	955								13	
06/29/16	900	6.7	-403	888	6.5	-393	939								9	
06/30/16	933	6.8	-408	866	6.6	-410	906								12	
Monthly Average	919	6.7	-395	826	6.4	-395	902	ND	ND	ND	0.0074	ND	1400	0.41	6	

Notes:  
 Flow reported as gpm is a daily average calculated from the totalizer reading.  
 ND = Not detected above laboratory method detection limit (ClO<sub>4</sub> = 0.5 ug/L; ClO<sub>3</sub> = 10 ug/L; NO<sub>3</sub>-N= 0.055 mg/L, CR(VI) = 0.25 ug/L); NA = Not Available, sample result not reported.  
 1: ETI = Envirogen internal process control data, TA = TestAmerica data.

GW-11 Level Monitoring		
Date	Field Measurement (ft)	Volume (MG)
6/7/2016	24.3	44.2
6/21/2016	25.1	43.1

GW-11 Leak Detection Monitoring				
Date	Amount Pumped <sup>1</sup> (gallons)			
	NW Corner	NE Corner	SW Corner	SE Corner
6/9/2016	0	1707	0	0
6/24/2016	0	2215	0	0

GW-11 Composite Sample <sup>2</sup>		
Analytes	Concentration	Units
Perchlorate	79	mg/L
Chlorate	200	mg/L
Ammonia as N	1.80	mg/L
Total Phosphorus	ND	mg/L
Total Dissolved Solids (TDS)	5500	mg/L
Total Suspended Solids (TSS)	8.0	mg/L
pH	8.01	s.u.
Calcium	370	mg/L
Iron	0.37	mg/L
Chromium (total)	0.047	mg/L
Chromium VI	0.018	mg/L
Chloride	1700	mg/L
Nitrate as N	NA <sup>3</sup>	mg/L
Sulfate	1500	mg/L

## Notes:

ND = Not detected above laboratory method detection limit (NH<sub>3</sub>-N= 0.1 mg/L; Total P = 0.025 ug/L; Cr(VI) = 0.25 ug/L).

1: Pumping occurs over three consecutive days. The total amount pumped over the three day period is listed with the last day pumping occurred.

2: Corner Composite Sample collected quarterly, most recent sampling results presented. Sampled on: April 26, 2016 by Envirogen.

3: No value reported from TestAmerica for the April 26, 2016 sample.



Nevada Environmental Response Trust   Groundwater Extraction and Treatment System   Enhanced Operational Metrics						
Date	Flow <sup>1</sup> (gpm)	FBR Influent Concentration			Influent Function Load <sup>2</sup> (lbs/day)	6 Month Rolling Average (lbs/day)
		ClO <sub>4</sub> (mg/L)	NO <sub>3</sub> as N (mg/L)	ClO <sub>3</sub> (mg/L)		
July 2015	857	100	5.0	180	547	555
Aug 2015	891	87	6.0	160	516	518
Sep 2015	785	103	9.0	180	540	534
Oct 2015	950	86	6.0	180	587	542
Nov 2015	927	82	6.6	140	496	536
Dec 2015	919	76	9.0	160	537	537
Jan 2016	892	85	9.0	160	542	536
Feb 2016	930	93	8.8	300	846	591
Mar 2016	960	84	9.0	160	581	598
April 2016	944	84	9.0	160	572	595
May 2016	976	98	9.0	230	760	639
June 2016	902	75	9.3	130	476	629

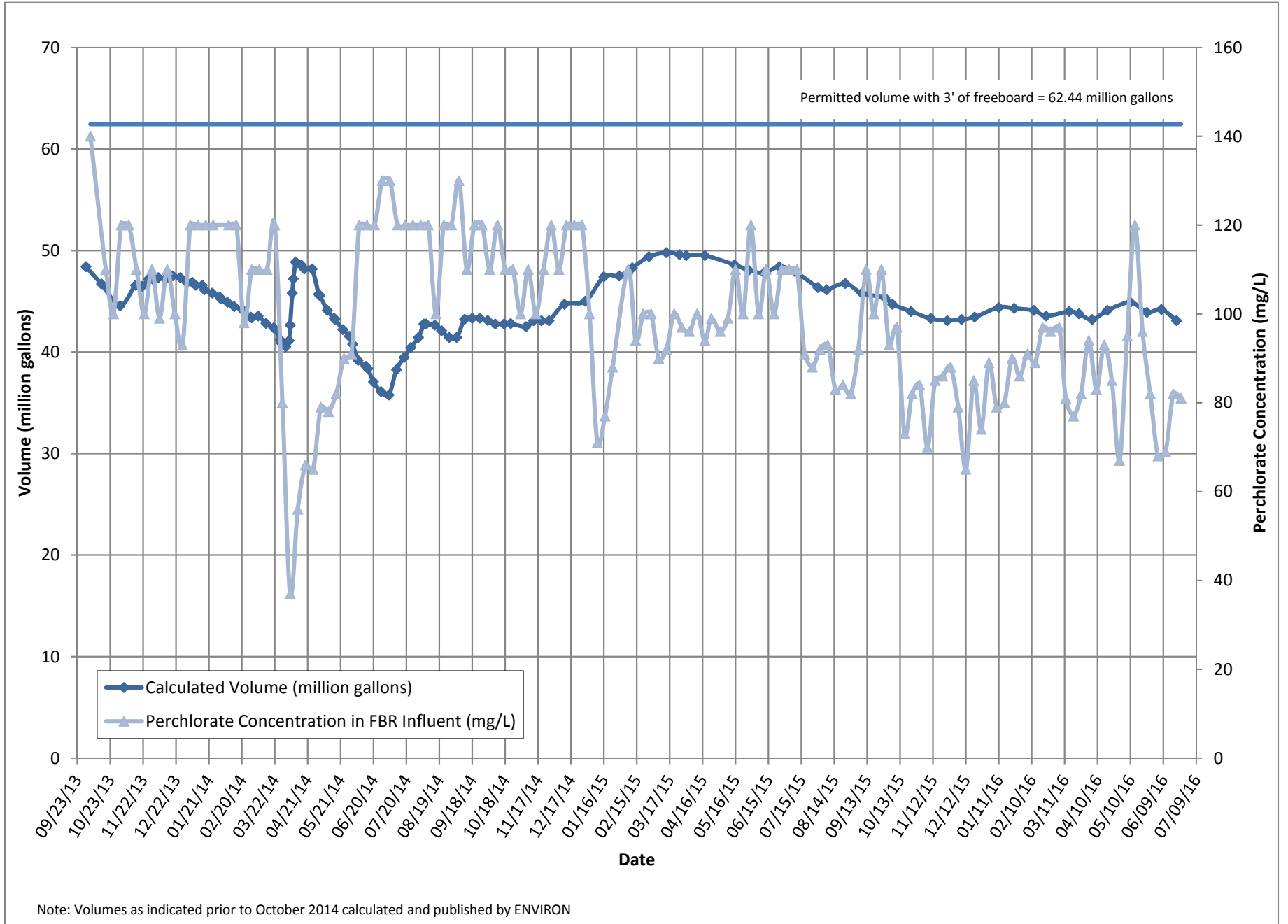
Notes:

Concentrations and flow are presented as monthly average.

1: Flow used in loading calculation is average monthly FBR effluent flow to be consistent with historical loading calculations.

2: FBR loading calculated as  $[(0.9 \times \text{NO}_3 \text{ as N} + 0.17 \times \text{ClO}_3 + 0.18 \times \text{ClO}_4) \times \text{Flow} \times 1440 / 1000000 \times 8.34]$ .

Figure 1 - GW-11 Pond Volume and Perchlorate Concentration



Note: Volumes as indicated prior to October 2014 calculated and published by ENVIRON

Figure 2 - FBR Equivalent Loading Calculation

