

Nevada Environmental Response Trust Groundwater Extraction and Treatment System Enhanced Operational Metrics																				
Date	LS #1	East Well (PC-116R)		Center Well (PC99R2/99R3)		West Well (PC-115R)		PC 117		PC 118		PC 119		PC 120		PC 121		PC 133		
	Flow (gpm)	Flow (gpm)	Level (ft)	Flow (gpm)	Level (ft)	Flow (gpm)	Level (ft)	Flow (gpm)	Level (ft)	Flow (gpm)	Level (ft)	Flow (gpm)	Level (ft)	Flow (gpm)	Level (ft)	Flow (gpm)	Level (ft)	Flow (gpm)	Level (ft)	
08/01/15	623	151		63		88		94		78		62		0		0		8		
08/02/15	626	150		63		88		94		78		63		0		0		8		
08/03/15	623	150		62		91		93		78		62		0		0		8		
08/04/15	622	148		63		93		94		78		63		0		0		8		
08/05/15	624	149		63		94		94		78		63		0		0		9		
08/06/15	625	148		63		94		94		78		63		0		0		8		
08/07/15	624	149		63		94		94		78		63		0		0		8		
08/08/15	624	148		63		93		94		78		63		0		0		8		
08/09/15	622	149		63		94		94		78		63		0		0		9		
08/10/15	625	149	Future Metric - Enhanced Operations	63	Future Metric - Enhanced Operations	94	Future Metric - Enhanced Operations	94	Future Metric - Enhanced Operations	78	Future Metric - Enhanced Operations	63	Future Metric - Enhanced Operations	0	Future Metric - Enhanced Operations	0	Future Metric - Enhanced Operations	8	Future Metric - Enhanced Operations	
08/11/15	625	149		63		93		94		78		63		0		0		8		
08/12/15	626	150		63		94		94		78		63		0		0		9		
08/13/15	624	150		63		93		94		78		63		0		0		8		
08/14/15	624	151		63		94		94		78		63		0		0		8		
08/15/15	625	152		63		94		94		78		63		0		0		9		
08/16/15	626	151		63		92		94		78		63		0		0		8		
08/17/15	625	152		63		94		94		78		63		0		0		8		
08/18/15	625	151		63		92		94		78		63		0		0		8		
08/19/15	622	149		63		92		93		78		62		0		0		9		
08/20/15	625	149	63	94	94	78	63	0	0	8										
08/21/15	624	151	63	93	94	78	63	0	0	8										
08/22/15	625	150	63	92	94	78	63	0	0	8										
08/23/15	625	149	63	92	94	78	63	0	0	9										
08/24/15	625	146	63	88	94	78	63	0	0	8										
08/25/15	624	148	62	86	94	78	63	0	0	8										
08/26/15	620	153	63	94	94	78	63	0	0	8										
08/27/15	619	151	63	94	94	78	63	0	0	8										
08/28/15	624	152	63	94	93	78	63	0	0	9										
08/29/15	625	152	63	94	94	78	63	0	0	8										
08/30/15	625	151	63	94	94	78	63	0	0	8										
08/31/15	624	151	63	94	94	78	63	0	0	9										
Monthly Average	624	150		62		93		94		78		62		0		0		9		
Analytical ¹	Conc (mg/L)	Date	Conc (mg/L)	Date	Conc (mg/L)	Date	Conc (mg/L)	Date	Conc (mg/L)	Date	Conc (mg/L)	Date	Conc (mg/L)	Date	Conc (mg/L)	Date	Conc (mg/L)	Date	Conc (mg/L)	Date
Perchlorate	18	8/3/2015	20	8/3/2015	11	8/3/2015	8.6	8/3/2015	3.0	8/3/2015	0.23	8/3/2015	0.077	8/3/2015	0.20	8/3/2015	0.78	8/3/2015		
Hexavalent Chromium	Future Metric - Enhanced Operations																			
Total Chromium ²	ND	8/3/2015	0.004	8/3/2015	ND	8/3/2015	ND	8/3/2015	ND	8/3/2015	ND	8/3/2015	ND	8/3/2015	ND	8/3/2015	ND	8/3/2015	ND	8/3/2015

Notes:
 Flow reported as gpm is a daily average calculated from the totalizer reading.
 ND = Not detected above laboratory method detection limit (ClO₄ = 0.5 ug/L; ClO₃ = 10 ug/L; NO₃-N= 0.055 mg/L, CR(VI) = 0.25 ug/L).
 1: Analytical results are reported from TestAmerica.
 2: Quarterly results, most recent sampling concentrations listed (Samples will be transitioned to monthly reporting in the future).

Table 2 - Athens Road Well Field (AWF) Operational Metrics

Nevada Environmental Response Trust Groundwater Extraction and Treatment System Enhanced Operational Metrics																									
Date	LS #3	ART 1		ART 2		ART 3		ART 4		ART 9	ART 6	ART 9	ART 7B		ART 8		PC-150								
	Flow (gpm)	Flow (gpm)	Level (ft)	Flow (gpm)	Level (ft)	Flow (gpm)	Level (ft)	Flow (gpm)	Level (ft)	Flow (gpm)	Level (ft)	Level (ft)	Flow (gpm)	Level (ft)	Flow (gpm)	Level (ft)	Flow ¹ (gpm)	Level (ft)							
08/01/15	249	8		63		43		16		56			27		63		3								
08/02/15	251	9		57		43		15		56			26		64		4								
08/03/15	249	8		62 ⁴		43		16		56			24		62		3								
08/04/15	249	8		62		43		15		56			25		63		3								
08/05/15	250	8		63		43		16		57			24		63		3								
08/06/15	250	8		63		43		15		56			24		63		4								
08/07/15	251	8		63		44		16		56			25		63		3								
08/08/15	249	8		62		44		15		56			24		63		4								
08/09/15	249	8	Future Metric - Enhanced Operations	63	Future Metric - Enhanced Operations	44	Future Metric - Enhanced Operations	16	Future Metric - Enhanced Operations	57	Future Metric - Enhanced Operations	Future Metric - Enhanced Operations	25	Future Metric - Enhanced Operations	63	Future Metric - Enhanced Operations	3	Future Metric - Enhanced Operations							
08/10/15	251	8		63		44		15		56			24		63		4								
08/11/15	249	8		63		44		15		56			25		63		3								
08/12/15	251	8		63		44		16		55			25		63		4								
08/13/15	249	8		63		43		16		56			24		63		3								
08/14/15	250	8		63		43		16		56			24		63		4								
08/15/15	250	8		63		44		15		56			24		63		3								
08/16/15	250	8		63		43		16		56			24		63		3								
08/17/15	250	8		63		44		16		56			24		63		3								
08/18/15	250	8		63		44		16		56			24		62		4								
08/19/15	249	8	62	44	15	56	24	63	3																
08/20/15	250	8	63	44	16	56	24	62	4																
08/21/15	249	8	62	44	16	56	24	63	3																
08/22/15	250	8	62	44	15	56	24	62	3																
08/23/15	250	8	62	43	16	56	24	62	4																
08/24/15	250	8	62	42	16	56	24	62	5																
08/25/15	250	10	63	34	15	57	25	64	5																
08/26/15	250	8	61	40	16	55	26	61 ⁶	4																
08/27/15	249	8	63	40	15	55	26 ⁷	63	4																
08/28/15	250	8	63	40	15	54	29	63	5																
08/29/15	250	8	63	40	16	55	24	62	4																
08/30/15	250	8	62	40	15	54	26	63	4																
08/31/15	250	8	63	33	15	56	35	63	4																
Monthly Average	262	8		62		42		16		56			25		62		4								
Analytical ²	Conc (mg/L)		Date	Conc (mg/L)		Date	Conc (mg/L)		Date	ART-9 (mg/L)		ART-6 (mg/L)	Date	Conc (mg/L)		Date	Conc (mg/L)		Date						
Perchlorate	13		8/3/2015	59		8/3/2015	210		8/3/2015	230		8/3/2015	230	30	8/3/2015	140		8/3/2015	150		8/3/2015	200		8/3/2015	
Hexavalent Chromium	Future Metric - Enhanced Operations																								
Total Chromium ³	ND		8/3/2015	0.032		8/3/2015	0.3		8/3/2015	0.42		8/3/2015	0.84		0.11	8/3/2015	0.71		8/3/2015	0.14		8/3/2015	0.3		8/3/2015

Notes:
 Flow reported as gpm is a daily average calculated from the totalizer reading.
 1: PC-150 flow estimated 07/01-07/19. Pump replaced on 07/19 and readings reported on 07/20-07/31.
 2: Analytical results are reported from TestAmerica.
 3: Quarterly results, most recent sampling concentrations listed (Samples will be transitioned to monthly reporting in the future).
 4: ART-2 was manually turned off to replace the motor and pump and was later restarted. During this time, ART-1, ART-4 and ART-7 flows were increased to compensate for maintenance on ART-2.
 5: ART-8 was off due to an unbalanced current due to electrical repairs on ART-3A and as a result the flow was redirected to ART-8A, ART-8 is back online.
 6.The electrical wires were switched in order to make ART-7B the primary well and ART-7A the buddy well.

Table 3 - Interceptor Well Field (IWF) Operational Metrics

Nevada Environmental Response Trust Groundwater Extraction and Treatment System Enhanced Operational Metrics																				
Date	I-AR		I-AA		I-AB		I-AC		I-AD		I-B		I-C		I-D		I-E		I-F	
	Flow (gpm)	Level (ft)	Flow (gpm)	Level (ft)	Flow (gpm)	Level (ft)	Flow (gpm)	Level (ft)	Flow (gpm)	Level (ft)	Flow (gpm)	Level (ft)	Flow (gpm)	Level (ft)	Flow (gpm)	Level (ft)	Flow (gpm)	Level (ft)	Flow (gpm)	Level (ft)
08/01/15	0.81		1.22		0.00		0.00		0.00		1.07		3.57		1.56		1.12		3.29	
08/02/15	0.73		1.14		0.00		0.00		0.00		1.03		3.26		1.45		1.05		3.61	
08/03/15	0.74		1.20		0.00		0.00		0.00		1.02		3.44		1.43		1.10		3.67	
08/04/15	0.72		1.19		0.00		0.00		0.00		1.04		3.40		1.42		1.07		3.68	
08/05/15	0.70		1.20		0.00		0.00		0.00		1.06		3.41		1.42		1.07		3.63	
08/06/15	0.74		1.21		0.00		0.00		0.00		0.99		3.46		1.42		1.11		3.70	
08/07/15	0.67		1.20		0.00		0.00		0.00		1.04		3.44		1.43		1.10		3.72	
08/08/15	0.69		1.23		0.00		0.00		0.00		1.10		3.53		1.47		1.13		3.84	
08/09/15	0.66		1.19		0.00		0.00		0.00		1.03		3.42		1.43		1.10		3.70	
08/10/15	0.67		1.17		0.00		0.00		0.00		1.03		3.29		1.38		1.04		3.57	
08/11/15	0.67		1.20		0.00		0.00		0.00		1.06		3.31		1.43		1.09		3.60	
08/12/15	0.68		1.21		0.00		0.00		0.00		1.01		3.42		1.43		1.10		3.69	
08/13/15	0.65		1.21		0.00		0.00		0.00		1.00		3.47		1.44		1.10		3.67	
08/14/15	0.61		1.20		0.00		0.00		0.00		0.99		3.37		1.44		1.10		3.66	
08/15/15	0.69		1.20		0.00		0.00		0.00		1.04		3.44		1.43		1.10		3.65	
08/16/15	0.53		1.20		0.00		0.00		0.00		0.99		3.39		1.44		1.09		3.60	
08/17/15	0.59		1.21		0.00		0.00		0.00		1.04		3.38		1.45		1.10		3.70	
08/18/15	0.66		1.21		0.00		0.00		0.00		0.97		3.37		1.44		1.09		3.67	
08/19/15	0.68		1.21		0.00		0.00		0.00		1.04		3.40		1.44		1.10		3.68	
08/20/15	0.59		1.20		0.00		0.00		0.00		0.97		3.38		1.45		1.14		3.64	
08/21/15	0.59		1.25		0.00		0.00		0.00		1.06		3.46		1.49		1.14		3.79	
08/22/15	0.61		1.28		0.00		0.00		0.00		1.05		3.58		1.53		1.15		3.86	
08/23/15	0.54		1.12		0.00		0.00		0.00		1.01		3.11		1.34		1.01		3.35	
08/24/15	0.60		1.22		0.00		0.00		0.00		0.97		3.39		1.47		1.13		3.67	
08/25/15	0.57		1.21		0.00		0.00		0.00		1.03		3.36		1.45		1.10		3.63	
08/26/15	0.58		1.24		0.00		0.00		0.00		1.04		3.47		1.49		1.12		3.75	
08/27/15	0.57		1.22		0.00		0.00		0.00		1.03		3.38		1.49		1.12		3.68	
08/28/15	0.57		1.23		0.00		0.00		0.00		1.06		3.39		1.51		1.11		3.70	
08/29/15	0.73		1.55		0.00		0.00		0.00		1.31		4.29		1.89		1.37		4.64	
08/30/15	0.46		0.95		0.00		0.00		0.00		0.82		2.60		1.17		0.85		2.90	
08/31/15	0.58		1.23		0.00		0.00		0.00		1.11		3.39		1.50		1.10		3.67	
Monthly Average	0.65		1.21		0.00		0.00		0.00		1.03		3.41		1.46		1.10		3.66	
Analytical ¹	Conc (mg/L)	Date	Conc (mg/L)	Date	Conc (mg/L)	Date	Conc (mg/L)	Date	Conc (mg/L)	Date	Conc (mg/L)	Date	Conc (mg/L)	Date	Conc (mg/L)	Date	Conc (mg/L)	Date	Conc (mg/L)	Date
Perchlorate ²	2200	8/3/2015	110	8/3/2015	400	8/3/2015	NA ³	8/7/2015	120	8/7/2015	530	8/3/2015	840	8/3/2015	890	8/3/2015	840	8/3/2015	980	8/3/2015
Hexavalent Chromium	Future Metric - Enhanced Operations																			
Total Chromium ²	3.3	8/3/2015	0.058	8/3/2015	0.03	8/3/2015	NA ³	8/7/2015	1.1	8/7/2015	0.14	8/3/2015	3.2	8/3/2015	13	8/3/2015	9.3	8/3/2015	19	8/3/2015

Notes:
 Flow reported as gpm is a daily average calculated from the totalizer reading.
 1: Analytical results are reported from TestAmerica.
 2: Quarterly results, most recent sampling concentrations listed (Samples will be transitioned to monthly reporting in the future).
 3. Sample not taken due to lack of water availability in well I-AC.

Table 3 - Interceptor Well Field (IWF) Operational Metrics

Nevada Environmental Response Trust Groundwater Extraction and Treatment System Enhanced Operational Metrics																				
Date	I-G		I-H		I-I		I-J		I-K		I-L		I-M		I-N		I-O		I-P	
	Flow (gpm)	Level (ft)	Flow (gpm)	Level (ft)	Flow (gpm)	Level (ft)	Flow (gpm)	Level (ft)	Flow (gpm)	Level (ft)	Flow (gpm)	Level (ft)	Flow (gpm)	Level (ft)	Flow (gpm)	Level (ft)	Flow (gpm)	Level (ft)	Flow (gpm)	Level (ft)
08/01/15	0.14		0.75		4.91		6.31		3.75		2.71		2.40		2.56		1.25		1.61	
08/02/15	0.13		0.70		5.41		6.92		4.10		2.49		2.25		2.39		1.18		1.50	
08/03/15	0.13		0.69		5.10		6.50		3.86		2.56		2.25		2.49		1.22		1.56	
08/04/15	0.13		0.73		4.28		6.26		3.71		2.57		2.22		2.47		1.21		1.55	
08/05/15	0.13		0.73		4.99		6.41		3.79		2.57		2.22		2.47		1.23		1.54	
08/06/15	0.14		0.74		5.07		6.52		3.84		2.57		2.26		2.48		1.22		1.56	
08/07/15	0.13		0.74		5.03		6.51		3.83		2.57		2.26		2.48		1.23		1.55	
08/08/15	0.14		0.77		4.89		6.28		3.69		2.66		2.35		2.56		1.28		1.62	
08/09/15	0.13		0.73		5.00		6.45		3.81		2.54		2.27		2.47		1.18		1.53	
08/10/15	0.12		0.69		5.23		6.76		3.99		2.42		2.21		2.41		1.07		1.46	
08/11/15	0.13		0.71		5.01		6.41		3.78		2.55		2.24		2.48		1.09		1.53	
08/12/15	0.14		0.72		5.17		6.64		3.92		2.58		2.30		2.51		1.09		1.54	
08/13/15	0.15		0.72		4.97		6.40		3.79		2.55		2.29		2.49		2.42		1.54	
08/14/15	0.13		0.72		5.07		6.52		3.85		2.50		2.29		2.46		0.09		1.52	
08/15/15	0.14		0.73		5.67		7.32		4.32		2.43		2.29		2.46		1.10		1.53	
08/16/15	0.13		0.66		4.53		5.84		3.45		2.43		2.30		2.45		1.11		1.53	
08/17/15	0.13		0.00*		5.06		6.53		3.85		2.42		2.32		2.45		1.17		1.58	
08/18/15	0.13		0.54		5.02		6.48		3.82		2.41		2.32		2.44		1.20		1.60	
08/19/15	0.13		0.67		5.03		6.48		3.81		2.44		2.32		2.43		1.14		1.55	
08/20/15	0.13		0.64		5.00		6.44		3.79		2.42		2.31		2.41		1.12		1.51	
08/21/15	0.13		0.66		4.47		6.28		3.70		2.51		2.41		2.49		1.14		1.55	
08/22/15	0.14		0.67		3.87		6.61		3.88		2.55		2.44		2.53		1.16		1.58	
08/23/15	0.12		0.58		5.27		6.74		3.96		2.23		2.13		2.22		1.00		1.39	
08/24/15	0.12		0.64		5.06		6.50		3.82		2.45		2.33		2.42		1.11		1.50	
08/25/15	0.13		0.63		4.94		6.36		3.75		2.42		2.29		2.38		1.08		1.47	
08/26/15	0.12		0.64		5.12		6.58		3.86		2.46		2.35		2.42		1.11		1.51	
08/27/15	0.13		0.64		5.15		6.63		3.89		2.45		2.33		2.40		1.10		1.49	
08/28/15	0.13		0.63		5.03		6.43		3.78		2.43		2.31		2.41		1.07		1.51	
08/29/15	0.16		0.80		6.35		8.16		4.79		3.07		2.90		3.03		1.36		1.89	
08/30/15	0.10		0.50		3.94		5.06		2.98		1.90		1.80		1.87		0.85		1.16	
08/31/15	0.12		0.64		5.09		6.47		3.81		2.44		2.33		2.39		1.07		1.49	
Monthly Average	0.13		0.68		4.99		6.51		3.84		2.49		2.30		2.45		1.15		1.53	
Analytical ¹	Conc (mg/L)	Date	Conc (mg/L)	Date	Conc (mg/L)	Date	Conc (mg/L)	Date	Conc (mg/L)	Date	Conc (mg/L)	Date	Conc (mg/L)	Date	Conc (mg/L)	Date	Conc (mg/L)	Date	Conc (mg/L)	Date
Perchlorate ²	660	8/3/2015	1900	8/3/2015	720	8/7/2015	280	8/7/2015	950	8/3/2015	960	8/3/2015	960	8/3/2015	1100	8/3/2015	1300	8/3/2015		
Hexavalent Chromium	Future Metric - Enhanced Operations																			
Total Chromium ²	10	8/3/2015	21	8/3/2015	13	8/7/2015	3.5	8/7/2015	2	8/7/2015	0.89	8/3/2015	9.3	8/3/2015	10	8/3/2015	18	8/3/2015	17	8/3/2015

Notes:

Flow reported as gpm is a daily average calculated from the totalizer reading.

1: Analytical results are reported from TestAmerica.

2: Quarterly results, most recent sampling concentrations listed (Samples will be transitioned to monthly reporting in the future).

4. Well I-H was offline for motor and electrical connection replacement, the well is now back online.

Table 3 - Interceptor Well Field (IWF) Operational Metrics

Nevada Environmental Response Trust Groundwater Extraction and Treatment System Enhanced Operational Metrics																				
Date	I-Q		I-R		I-S		I-T		I-U		I-V		I-W		I-X		I-Y		I-Z	
	Flow (gpm)	Level (ft)	Flow (gpm)	Level (ft)	Flow (gpm)	Level (ft)	Flow (gpm)	Level (ft)	Flow (gpm)	Level (ft)	Flow (gpm)	Level (ft)	Flow (gpm)	Level (ft)	Flow (gpm)	Level (ft)	Flow (gpm)	Level (ft)	Flow (gpm)	Level (ft)
08/01/15	0.41		2.53		5.09		0.43		0.93		4.18		0.61		2.21		1.44		6.46	
08/02/15	0.38		2.34		4.76		0.43		0.87		4.60		0.56		1.87		1.33		7.08	
08/03/15	0.40		2.47		4.84		0.40		0.91		4.32		0.59		1.98		1.28		6.64	
08/04/15	0.40		2.46		4.83		0.42		0.90		4.17		0.58		1.91		1.28		6.40	
08/05/15	0.40		2.46		4.85		0.39		0.90		4.27		0.58		1.94		1.27		6.53	
08/06/15	0.40		2.48		4.91		0.37		0.91		4.36		0.60		2.15		2.58		6.64	
08/07/15	0.40		2.47		4.88		0.44		0.90		4.33		0.58		1.98		0.79		6.62	
08/08/15	0.42		2.54		5.04		0.47		0.94		4.20		0.61		1.99		1.36		6.39	
08/09/15	0.40		2.45		4.88		0.27		0.90		4.29		0.58		1.92		1.28		6.57	
08/10/15	0.38		2.40		4.76		0.38		0.86		4.48		0.54		1.95		1.29		6.86	
08/11/15	0.39		2.43		4.85		0.14		0.91		4.28		0.59		1.89		1.26		6.55	
08/12/15	0.40		2.47		4.95		0.00 ⁵		0.92		4.44		0.58		1.96		1.29		6.76	
08/13/15	0.41		2.47		4.95		0.00 ⁵		0.93		4.28		0.58		1.97		1.29		6.51	
08/14/15	0.40		2.45		4.97		0.40		0.91		4.36		0.57		1.96		1.26		6.62	
08/15/15	0.40		2.45		5.03		0.47		0.91		4.88		0.58		1.92		1.30		7.42	
08/16/15	0.40		2.45		5.05		0.39		0.90		3.89		0.57		2.09		1.24		5.92	
08/17/15	0.40		2.46		5.06		0.39		0.92		4.37		0.59		1.95		1.23		6.60	
08/18/15	0.40		2.47		5.10		0.45		0.91		4.35		0.60		1.89		1.27		6.57	
08/19/15	0.40		2.48		5.12		0.42		0.91		4.33		0.58		1.92		1.21		6.54	
08/20/15	0.40		2.48		5.10		0.39		0.90		4.33		0.57		1.97		1.22		6.50	
08/21/15	0.41		2.57		4.71		0.40		0.93		4.21		0.59		2.05		1.28		6.34	
08/22/15	0.41		2.60		5.37		0.42		0.95		4.42		0.62		2.06		1.30		6.66	
08/23/15	0.37		2.29		4.70		0.39		0.83		4.50		0.52		1.79		1.18		6.80	
08/24/15	0.39		2.50		5.15		0.42		0.91		4.33		0.57		1.94		1.25		6.55	
08/25/15	0.39		2.46		5.02		0.41		0.90		4.21		0.57		1.90		1.23		6.41	
08/26/15	0.40		2.52		5.16		0.35		0.92		4.39		0.58		1.96		1.24		6.61	
08/27/15	0.40		2.49		5.09		0.44		0.91		4.40		0.58		2.07		1.21		6.98	
08/28/15	0.40		2.49		5.07		0.37		0.92		4.32		0.56		1.87		1.39		6.28	
08/29/15	0.50		3.11		6.40		0.52		1.15		5.44		0.73		2.50		1.68		8.23	
08/30/15	0.30		1.92		3.95		0.37		0.71		3.36		0.45		1.56		1.05		5.09	
08/31/15	0.39		2.47		5.07		0.35		0.91		4.34		0.58		1.93		1.14		6.55	
Monthly Average	0.40		2.47		4.99		0.40		0.91		4.34		0.58		1.97		1.30		6.60	
Analytical ¹	Conc (mg/L)	Date	Conc (mg/L)	Date	Conc (mg/L)	Date	Conc (mg/L)	Date	Conc (mg/L)	Date	Conc (mg/L)	Date	Conc (mg/L)	Date	Conc (mg/L)	Date	Conc (mg/L)	Date	Conc (mg/L)	Date
Perchlorate ²	1500	8/3/2015	1300	8/3/2015	730	8/3/2015	1200	8/3/2015	2000	8/3/2015	950	8/7/2015	1000	8/3/2015	1400	8/3/2015	1700	8/3/2015	330	8/7/2015
Hexavalent Chromium	Future Metric - Enhanced Operations																			
Total Chromium ²	24	8/3/2015	0.51	8/3/2015	1.7	8/3/2015	27	8/3/2015	21	8/3/2015	12	8/7/2015	17	8/3/2015	15	8/3/2015	1	8/3/2015	8.2	8/7/2015

Notes:
 Flow reported as gpm is a daily average calculated from the totalizer reading. NA = Not Available
 1: Analytical results are reported from TestAmerica.
 2: Quarterly results, most recent sampling concentrations listed (Samples will be transitioned to monthly reporting in the future).
 5. Well I-T was reset manually on 8/14/2015.

Table 4 - Treatment Plant Operational Metrics

Nevada Environmental Response Trust Groundwater Extraction and Treatment System Enhanced Operational Metrics																	
Date	LS #2	GWTP Effluent				GW-11 Influent ²				FBR Plant Influent ¹							
		Flow (gpm)	TA - Cr (TR) (mg/L)	TA - Cr (VI) (mg/L)	TA - ClO ₄ (mg/L)	Flow ³ (gpm)	Cr (TR) (mg/L)	Cr (VI) (mg/L)	ClO ₄ (mg/L)	Flow (gpm)	TA - ClO ₄ (mg/L)	ETI - ClO ₄ (mg/L)	TA - ClO ₃ (mg/L)	TA - SO ₄ (mg/L)	TA - NO ₃ - N (mg/L)	TA - Cr (TR) (mg/L)	TA - Cr (VI) (mg/L)
08/01/15	747	56				861											
08/02/15	751	54				864						92	84				
08/03/15	747	54				855						83	84				
08/04/15	748	55				861						83	84	160	1,700	6	0.008
08/05/15	751	54				862						84	84				
08/06/15	747	56	0.15	ND	800	868						84	84				
08/07/15	751	55				866						84	84				
08/08/15	748	53				867						93	80				
08/09/15	749	54				867						85	85				
08/10/15	751	54				867						85	85				
08/11/15	749	67				867						85	85			7	0.011
08/12/15	776	69				868						83	83				
08/13/15	748	69	0.17	ND	850	861						84	84				
08/14/15	749	70				874						81	81				
08/15/15	750	70				869						83	81				
08/16/15	751	67				865						85	85				
08/17/15	750	57				869						79	79			5.5	0.013
08/18/15	751	55				864						81	81				
08/19/15	747	57				867						82	82				
08/20/15	751	62	0.94	ND	750	864						79	79				
08/21/15	750	68				875						81	81				
08/22/15	750	65				863						85	85				
08/23/15	750	64				868						88	88				
08/24/15	750	68				870						78	78			6	0.004
08/25/15	750	62				863						80	80				
08/26/15	750	63				859						79	79				
08/27/15	749	63	0.25	ND	720	865						80	80				
08/28/15	750	56				871						80	80				
08/29/15	749	55				865						82	78				
08/30/15	751	55				866						77	77				
08/31/15	749	56				869						80	80			6	0.008
Monthly Average	750	60	0.42	ND	780	866						87	82	160	1700	6	0.009

Notes:

Flow reported as gpm is a daily average calculated from the totalizer reading.

ND = Not detected above laboratory method detection limit (ClO₄ = 0.5 ug/L; ClO₃ = 10 ug/L; NO₃-N= 0.055 mg/L, CR(VI) = 0.25 ug/L).

1: ETI = Envirogen internal process control data, TA = TestAmerica data.

2: Following contractual amendment agreements, ETI will begin collecting new analytical samples at the GW-11 influent sample tap.

Table 4 - Treatment Plant Operational Metrics

Nevada Environmental Response Trust Groundwater Extraction and Treatment System Enhanced Operational Metrics																
Date	1st Stage FBR Influent ³			2nd Stage FBR Influent			FBR Plant Effluent ¹									
	Flow (gpm)	pH (s.u.)	ORP (mV)	Flow (gpm)	pH (s.u.)	ORP (mV)	Flow (gpm)	TA - ClO ₄ (mg/L)	ETI - ClO ₄ (mg/L)	TA - ClO ₃ (mg/L)	TA - Cr (TR) (mg/L)	TA - Cr (VI) (mg/L)	TA - SO ₄ (mg/L)	TA - NO ₃ - N (mg/L)	ETI - Turbidity (NTU)	
08/01/15		7.14	-373		7.37	-360	921	ND	ND						12	
08/02/15		6.93	-388		7.29	-358	961		ND						6	
08/03/15		6.99	-398		7.21	-357	957		ND	0.05	0.005	ND	1,400	0.26	27	
08/04/15		2.64	-963		ND	-1000	927		ND						10	
08/05/15		2.64	-963		ND	-1000	938		ND						16	
08/06/15		2.12	-963		ND	-1000	916		ND						10	
08/07/15		2.64	-963		ND	-1000	915		ND						12	
08/08/15		2.64	-963		ND	-1000	938	ND	ND						14	
08/09/15		2.12	-963		ND	-1000	933		ND						10	
08/10/15		2.64	-963		ND	-1000	933		ND						16	
08/11/15		2.12	-963		ND	-1000	883		ND		0.01	ND		1.3	19	
08/12/15		0.00	-1000		ND	-1000	888		ND						64	
08/13/15		6.97	-233		7.17	-275	732 ²		ND						9	
08/14/15		7.14	-406		7.27	-313	910		ND						35	
08/15/15		6.92	-409		7.19	-339	910	ND	ND						22	
08/16/15		7.13	-419		7.26	-361	852		ND						2	
08/17/15		7.30	-430		7.27	-358	935		ND		0.0062	ND		0.22	22	
08/18/15		7.33	-415		7.25	-353	801		ND						8	
08/19/15		7.34	-422		7.27	-362	950		ND						6	
08/20/15		7.28	-424		7.29	-359	903		ND						25	
08/21/15		7.21	-421		7.26	-360	891		ND						23	
08/22/15		7.15	-418		7.24	-360	826		ND						22	
08/23/15		6.97	-419		7.15	-359	897		ND						22	
08/24/15		7.07	-420		7.12	-359	947	ND	ND		ND	ND		0.63	32	
08/25/15		7.14	-425		7.18	-358	942		ND						4	
08/26/15		7.14	-423		7.18	-361	913		ND						5	
08/27/15		6.90	-416		7.12	-360	930		ND						6	
08/28/15		7.04	-416		7.12	-360	938		ND						15	
08/29/15		7.00	-414		7.07	-358	913	ND	ND						25	
08/30/15		7.11	-417		7.18	-361	893		ND						12	
08/31/15		7.09	-414		7.14	-361	942		ND		ND	ND		0.67	6	
Monthly Average		5.67	-568		7.21	-540	913	ND	ND	ND	0.01	ND	1400	0.62	17	

Notes:

Flow reported as gpm is a daily average calculated from the totalizer reading.

ND = Not detected above laboratory method detection limit (ClO₄ = 0.5 ug/L; ClO₃ = 10 ug/L; NO₃-N = 0.055 mg/L, CR(VI) = 0.25 ug/L).

1: ETI = Envirogen internal process control data, TA = TestAmerica data.

3. Due to communication issues with the plant, the FBR effluent was diverted to GW-11 for 1.5 hours until issues resolved.

4. The FBR plant experienced communication issues during the dates of 8/4/2015-8/12/2015

GW-11 Level Monitoring		
Date	Field Measurement (ft)	Volume (MG)
8/7/2015	22.10	46.1
8/24/2015	22.5	46.8

GW-11 Leak Detection Monitoring				
Date	Amount Pumped (gallons)			
	NW Corner	NE Corner	SW Corner	SE Corner
8/13/2015	0	0	0	102
8/27/2015	3	3	0	75

GW-11 Composite Sample ¹		
Analytes	Concentration	Units
Perchlorate	700	mg/L
Chlorate	150	mg/L
Ammonia as N	2	mg/L
Total Phosphorus	0	mg/L
Total Dissolved Solids (TDS)	5400	mg/L
Total Suspended Solids (TSS)	89	mg/L
pH	8	s.u.
Calcium	460	mg/L
Iron	7	mg/L
Chromium (total)	0	mg/L
Chromium VI	ND	mg/L
Chloride	1600	mg/L
Nitrate as N	6	mg/L
Sulfate	1500	mg/L

Notes:

ND = Not detected above laboratory method detection limit (NH3-N= 0.1 mg/L; Total P = .025 ug/L).

1: Corner Composite Sample collected on: August 27, 2015 by Envirogen.

Nevada Environmental Response Trust Groundwater Extraction and Treatment System Enhanced Operational Metrics						
Date	Flow ¹ (gpm)	FBR Influent Concentration			Influent Function Load ² (lbs/day)	6 Month Rolling Average (lbs/day)
		ClO ₄ (mg/L)	NO ₃ as N (mg/L)	ClO ₃ (mg/L)		
July 2014	786	123	8.8	220	636	636
Aug 2014	880	116	11	190	663	649
Sept 2014	828	120	11	200	649	649
Oct 2014	825	113	12	200	645	648
Nov 2014	828	108	9.4	160	548	628
Dec 2014	785	118	11	210	628	628
Jan 2015	844	84	6.6	190	628	627
Feb 2015	1021	101	7.0	210	542	613
Mar 2015	918	95	7.0	100	445	594
Apr 2015	916	97	7.0	140	523	576
May 2015	858	105	6.1	170	549	582
June 2015	824	108	6.0	170	532	569
July 2015	852	100	5.0	180	543	567
August 2015	866	87	6.0	160	502	553

Notes:

Concentrations and flow are presented as monthly average.

1: Flow used in loading calculation is average monthly FBR effluent flow to be consistent with historical loading calculations.

2: FBR loading calculated as $[0.9 \cdot \text{NO}_3 \text{ as N} + 0.17 \cdot \text{ClO}_3 + 0.18 \cdot \text{ClO}_4 \cdot \text{Flow} \cdot 1440 / 1000000 \cdot 8.34]$.

Figure 1 - GW-11 Pond Volume and Perchlorate Concentration

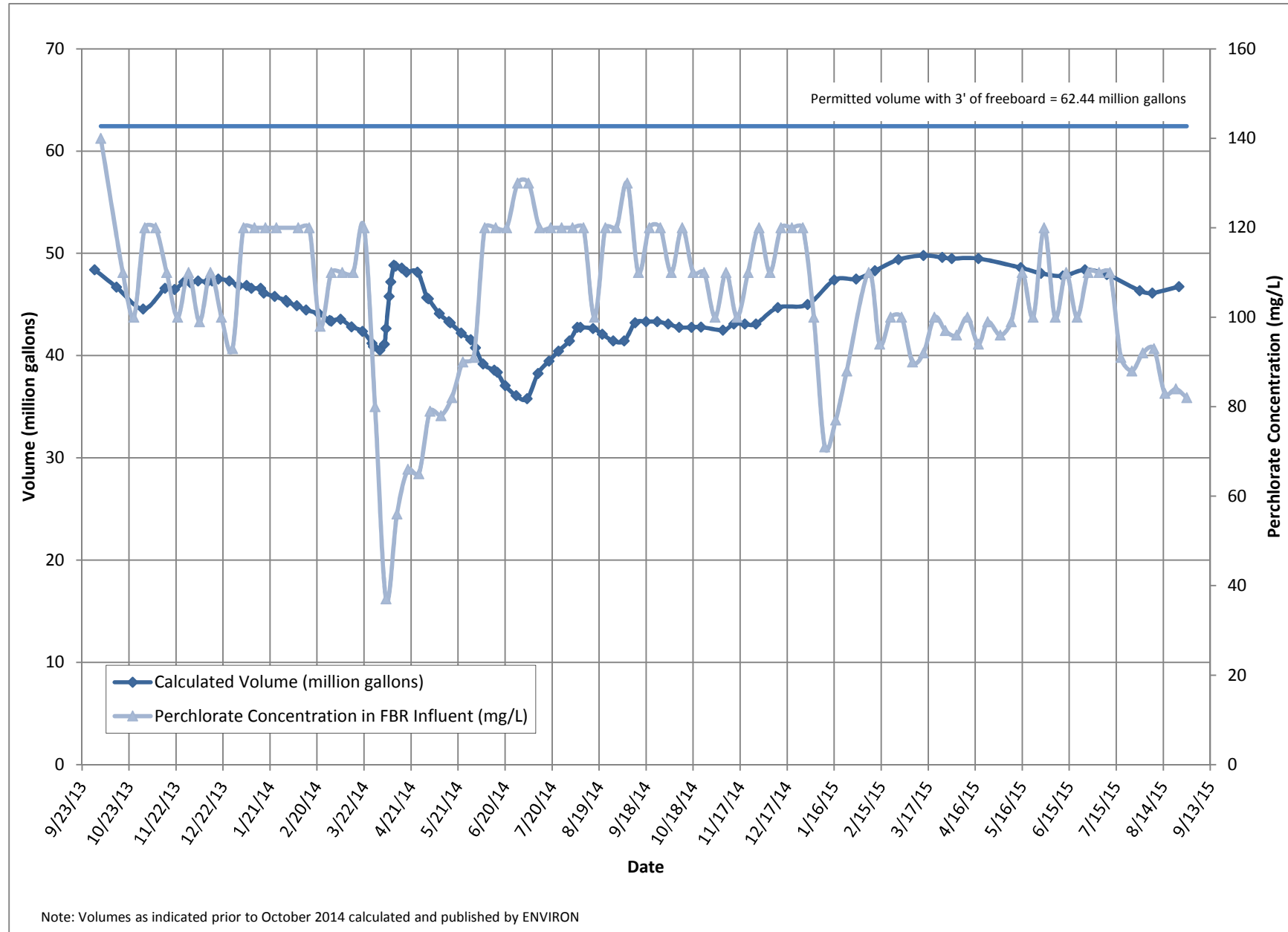


Figure 2 - FBR Equivalent Loading Calculation

