

Table 1 - Seep Well Field (SWF) Operational Metrics

Nevada Environmental Response Trust   Groundwater Extraction and Treatment System   Enhanced Operational Metrics																			
Date	LS #1 Flow (gpm)	East Well (PC-116R) Flow (gpm)	Level (ft)	Center Well (PC99R2/99R3) Flow (gpm)	Level (ft)	West Well (PC-115R) Flow (gpm)	Level (ft)	PC 117 Flow (gpm)	Level (ft)	PC 118 Flow (gpm)	Level (ft)	PC 119 Flow (gpm)	Level (ft)	PC 120 Flow (gpm)	Level (ft)	PC 121 Flow (gpm)	Level (ft)	PC 133 Flow (gpm)	Level (ft)
12/01/14	626	125		62		91		94		78		63		0		0		4'	
12/02/14	623	125		63		97		94		78		62		0.5		0.5		4'	
12/03/14	626	126		63		97		94		78		63		0		0		4	
12/04/14	623	124		63		96		93		78		63		0		0		4	
12/05/14	626	125		63		97		94		78		63		0		0		4	
12/06/14	625	125		63		97		93		78		63		0		0		4	
12/07/14	625	125		63		96		94		78		63		0		0		4	
12/08/14	624	125		63		94		94		78		63		0		0		4	
12/09/14	626	125		63		97		94		78		63		0		0		4	
12/10/14	624	125		63		96		94		78		63		0		0		4	
12/11/14	625	125		63		94		94		78		63		0		0		4	
12/12/14	622	124		62		96		93		78		63		0		0		4	
12/13/14	625	125		63		95		94		78		63		0		0		4	
12/14/14	624	124		63		96		94		78		62		0		0		3	
12/15/14	625	125		63		96		94		78		63		0		0		4	
12/16/14	624	125		63		97		94		78		63		0		0		4	
12/17/14	626	125		63		97		94		78		63		0		0		4	
12/18/14	625	125		63		94		94		78		63		0		0		4	
12/19/14	625	125		63		96		94		78		63		0		0		4	
12/20/14	624	125		63		96		94		78		63		0		0		4	
12/21/14	624	125		63		94		94		78		63		0		0		4	
12/22/14	625	125		63		94		94		78		63		0		0		4	
12/23/14	625	125		63		94		94		78		63		0		0		4	
12/24/14	624	125		63		95		93		78		63		0		0		4	
12/25/14	625	125		63		97		94		78		63		0		0		4	
12/26/14	624	125		63		93		94		78		63		0		0		4	
12/27/14	625	125		63		94		94		78		63		0		0		4	
12/28/14	624	124		63		94		94		78		63		0		0		4	
12/29/14	626	125		63		93		94		78		63		0		0		4	
12/30/14	624	125		63		97		94		78		63		0		0		4	
12/31/14	625	125		63		100		94		78		63		0		0		4	
Monthly Average	625	125		62		95		94		78		62		0.02		0.02		4	
Analytical <sup>1</sup>	Conc (mg/L)	Date	Conc (mg/L)	Date	Conc (mg/L)	Date	Conc (mg/L)	Date	Conc (mg/L)	Date	Conc (mg/L)	Date	Conc (mg/L)	Date	Conc (mg/L)	Date	Conc (mg/L)	Date	
Perchlorate	16	12/1/2014	17	12/1/2014	10	12/1/2014	9.3	12/1/2014	3.0	12/1/2014	0.48	12/1/2014	0.17	12/1/2014	0.27	12/1/2014	8.9	12/1/2014	
Hexavalent Chromium	Future Metric - Enhanced Operations																		
Total Chromium <sup>3</sup>	0.0025	11/3/2014	0.0033	11/3/2014	ND	11/3/2014	ND	11/3/2014	ND	11/3/2014	ND	11/3/2014	ND	11/3/2014	ND	11/3/2014	ND	11/3/2014	

Notes:  
 Flow reported as gpm is a daily average calculated from the totalizer reading  
 ND = Not detected above laboratory method detection limit (ClO<sub>4</sub> = 0.5 ug/L; ClO<sub>3</sub> = 10 ug/L; NO<sub>3</sub>-N= 0.055 mg/L, CR(VI) = 0.25 ug/L)  
 1: Flow estimated  
 2: Analytical results are reported from TestAmerica  
 3: Quarterly results, most recent sampling concentrations listed (Samples will be transitioned to monthly reporting in the future)

Table 2 - Athens Road Well Field (AWF) Operational Metrics

Nevada Environmental Response Trust   Groundwater Extraction and Treatment System   Enhanced Operational Metrics																	
Date	LS #3 Flow (gpm)	ART 1		ART 2		ART 3		ART 4		ART 6 / ART 9		ART 7B		ART 8		PC-150	
		Flow (gpm)	Level (ft)	Flow (gpm)	Level (ft)	Flow (gpm)	Level (ft)	Flow (gpm)	Level (ft)	Flow (gpm)	Level (ft)	Flow (gpm)	Level (ft)	Flow (gpm)	Level (ft)	Flow <sup>1</sup> (gpm)	Level (ft)
12/01/14	251	20		46		46		16		58		31		62		5	
12/02/14	354	19		47		46		16		61		32		62		5	
12/03/14	314	19		47		45		15		63		31		63		5	
12/04/14	312	19		47		46		16		60		31		62		5	
12/05/14	313	20		47		46		15		63		31		63		5	
12/06/14	306	19		47		45		16		63		31		63		5	
12/07/14	319	19		47		46		15		65		31		63		5	
12/08/14	313	19		47		46		16		66		31		63		5	
12/09/14	313	19		56		46		15		66		31		63		5	
12/10/14	313	19		58		45		16		67		31		63		5	
12/11/14	333	13		63		45		15		58		31		63		5	
12/12/14	312	8		63		45		16		51		31		63		5	
12/13/14	311	8		63		46		15		51		31		63		5	
12/14/14	312	8		63		45		15		50		31		63		5	
12/15/14	313	8		63		46		16		51		31		63		5	
12/16/14	311	8		63		46		15		51		31		63		5	
12/17/14	260	8		63		45		16		51		31		63		5	
12/18/14	250	8		63		46		15		51		31		63		5	
12/19/14	250	8		63		46		16		51		31		63		5	
12/20/14	249	8		63		46		15		51		31		63		5	
12/21/14	250	8		63		46		16		51		31		63		5	
12/22/14	250	8		62		45		15		51		31		62		5	
12/23/14	250	8		62		46		16		50		31		63		5	
12/24/14	250	8		63		46		15		51		31		62		5	
12/25/14	250	8		62		46		16		51		31		62		5	
12/26/14	249	8		62		45		15		50		31		63		5	
12/27/14	250	8		63		46		15		51		31		62		5	
12/28/14	249	8		62		46		16		50		31		62		5	
12/29/14	251	8		61		45		15		51		31		61		5	
12/30/14	250	8		62		46		15		51		29		63		5	
12/31/14	250	8		63		46		16		52		29		63		5	
Monthly Average	282	12		58		46		16		55		31		62		5	
Analytical <sup>2</sup>	Conc (mg/L)	Date	Conc (mg/L)	Date	Conc (mg/L)	Date	Conc (mg/L)	Date	ART-6 (mg/L)	ART-9 (mg/L)	Date	Conc (mg/L) <sup>3</sup>	Date	Conc (mg/L)	Date	Conc (mg/L)	Date
Perchlorate	12	12/1/2014	40	12/1/2014	210	12/1/2014	270	12/1/2014	36	210	12/1/2014	140	12/1/2014	150	12/1/2014	170	12/1/2014
Hexavalent Chromium	Future Metric - Enhanced Operations																
Total Chromium <sup>4</sup>	0.0027	11/3/2014	0.027	11/3/2014	0.39	11/3/2014	0.6	11/3/2014	0.21	1.1	11/3/2014	0.65	11/3/2014	0.16	11/3/2014	NA <sup>5</sup>	11/3/2014

Notes:

- Flow reported as gpm is a daily average calculated from the totalizer reading
- 1: PC-150 Flow was manually entered into ETI field spreadsheet due to flow meter problems from 12/01/2014 - 12/29/2014
- 2: Analytical results are reported from TestAmerica
- 3: Perchlorate concentration was sampled at ART-7
- 4: Quarterly results, most recent sampling concentrations listed (Samples will be transitioned to monthly reporting in the future)
- 5: NA = Not Available. PC-150 was not in operation at time of quarterly sampling.

Table 3 - Interceptor Well Field (IWF) Operational Metrics

Nevada Environmental Response Trust   Groundwater Extraction and Treatment System   Enhanced Operational Metrics																				
Date	I-AR		I-AA		I-AB		I-AC		I-AD		I-B		I-C		I-D		I-E		I-F	
	Flow (gpm)	Level (ft)	Flow (gpm)	Level (ft)	Flow (gpm)	Level (ft)	Flow (gpm)	Level (ft)	Flow (gpm)	Level (ft)	Flow (gpm)	Level (ft)	Flow (gpm)	Level (ft)	Flow (gpm)	Level (ft)	Flow (gpm)	Level (ft)	Flow (gpm)	Level (ft)
12/01/14	0.79		1.22		0.00		0.00		0.00		1.01		5.73		1.78		0.63		4.30	
12/02/14	0.74		1.19		0.00		0.00		0.00		0.99		5.87		1.78		0.00		4.37	
12/03/14	0.78		1.18		0.00		0.00		0.00		0.98		5.40		1.70		0.00		4.08	
12/04/14	0.78		1.20		0.00		0.00		0.00		0.94		5.96		1.76		0 <sup>4</sup>		4.35	
12/05/14	0.76		1.21		0.00		0.00		0.00		1.03		6.39		1.83		0.00		4.57	
12/06/14	0.76		1.22		0.00		0.00		0.00		0.99		6.47		1.84		0.09 <sup>4</sup>		4.67	
12/07/14	0.75		1.21		0.00		0.00		0.00		1.03		6.36		1.81		0.89		4.59	
12/08/14	0.76		1.23		0.00		0.00		0.00		1.04		6.42		1.83		0.98		4.65	
12/09/14	0.76		1.23		0.00		0.00		0.00		0.92		6.42		1.82		0.99		4.61	
12/10/14	0.75		1.24		0.00		0.00		0.00		1.05		6.40		2.59		0.72		4.76	
12/11/14	0.76		1.24		0.00		0.00		0.00		0.97		6.39		1.07		0.84		4.53	
12/12/14	0.76		1.26		0.00		0.00		0.00		1.07		6.40		1.83		0.80		4.64	
12/13/14	0.74		1.24		0.00		0.00		0.00		1.05		6.40		1.83		0.75		4.58	
12/14/14	0.76		1.24		0.00		0.00		0.00		1.06		6.43		1.82		0.8 <sup>5</sup>		4.69	
12/15/14	0.75		1.25		0.00		0.00		0.00		1.06		6.44		1.82		1.06		4.65	
12/16/14	0.75		1.25		0.00		0.00		0.00		1.03		5.89		1.83		1.08		4.62	
12/17/14	0.75		1.25		0.00		0.00		0.00		1.11		5.88		1.82		1.07		4.60	
12/18/14	0.75		1.24		0.00		0.00		0.00		1.04		5.95		1.85		1.09		4.63	
12/19/14	0.74		1.25		0.00		0.00		0.00		1.04		5.97		1.86		1.13		4.57	
12/20/14	0.73		1.24		0.00		0.00		0.00		1.07		5.94		1.85		1.13		4.56	
12/21/14	0.74		1.25		0.00		0.00		0.00		1.07		5.91		1.87		1.09		4.60	
12/22/14	0.73		1.24		0.00		0.00		0.00		1.06		5.92		1.84		1.10		4.52	
12/23/14	0.75		1.25		0.00		0.00		0.00		1.03		5.93		1.85		1.15		4.58	
12/24/14	0.73		1.25		0.00		0.00		0.00		1.05		5.93		1.85		1.15		4.56	
12/25/14	0.74		1.27		0.00		0.00		0.00		1.02		6.12		1.88		1.16		4.57	
12/26/14	0.71		1.23		0.00		0.00		0.00		1.08		6.03		1.83		1.13		4.48	
12/27/14	0.71		1.23		0.00		0.00		0.00		1.01		6.08		1.83		1.13		4.40	
12/28/14	0.74		1.27		0.00		0.00		0.00		1.07		6.32		1.88		1.16		4.57	
12/29/14	0.72		1.25		0.00		0.00		0.00		1.10		6.25		1.86		1.15		4.56	
12/30/14	0.71		1.25		0.00		0.00		0.00		1.03		6.21		1.86		1.15		4.46	
12/31/14	0.72		1.26		0.00		0.00		0.00		1.08		6.24		1.85		1.13		4.46	
Monthly Average	0.75		1.24		0.00		0.00		0.00		1.04		6.13		1.83		0.92		4.54	
Analytical <sup>1</sup>	Conc (mg/L)	Date	Conc (mg/L)	Date	Conc (mg/L)	Date	Conc (mg/L)	Date	Conc (mg/L)	Date	Conc (mg/L)	Date	Conc (mg/L)	Date	Conc (mg/L)	Date	Conc (mg/L)	Date	Conc (mg/L)	Date
Perchlorate <sup>2</sup>	2100	12/1/2014	91	12/1/2014	470	12/1/2014	25	12/2/2014	140	12/2/2014	760	12/1/2014	880	12/1/2014	980	12/1/2014	860	12/1/2014	1300	12/1/2014
Hexavalent Chromium	Future Metric - Enhanced Operations																			
Total Chromium <sup>2</sup>	0.5	12/1/2014	1.4	12/1/2014	0.016	12/1/2014	1	12/2/2014	2.4	12/2/2014	0.14	12/1/2014	2.8	12/1/2014	6.3	12/1/2014	8.6	12/1/2014	17	12/1/2014

Notes:  
 Flow reported as gpm is a daily average calculated from the totalizer reading  
 1: Analytical results are reported from TestAmerica  
 2: Quarterly results, most recent sampling concentrations listed (Samples will be transitioned to monthly reporting in the future)  
 3: Current fault was noted in the ETI field spreadsheet  
 4: I-E pump replaced  
 5: Changed the flow set point

Nevada Environmental Response Trust   Groundwater Extraction and Treatment System   Enhanced Operational Metrics																				
Date	I-G		I-H		I-I		I-J		I-K		I-L		I-M		I-N		I-O		I-P	
	Flow (gpm)	Level (ft)	Flow (gpm)	Level (ft)	Flow (gpm)	Level (ft)	Flow (gpm)	Level (ft)	Flow (gpm)	Level (ft)	Flow (gpm)	Level (ft)	Flow (gpm)	Level (ft)	Flow (gpm)	Level (ft)	Flow (gpm)	Level (ft)	Flow (gpm)	Level (ft)
12/01/14	0.15		1.46		4.51		2.50		5.01		2.51		2.41		2.05		3.04		3.78	
12/02/14	0.13		1.44		4.73		2.61		5.23		2.48		2.42		2.07		3.04		3.75	
12/03/14	0.13		1.45		4.39		2.44		4.97		2.42		2.27		1.92		3.00		3.75	
12/04/14	0.14		1.48		4.49		2.47		5.11		2.54		2.33		1.92		3.09		3.85	
12/05/14	0.15		1.45		4.87		2.68		5.44		2.52		2.41		2.01		3.03		3.74	
12/06/14	0.18		1.47		4.58		2.52		5.11		2.52		2.42		2.02		3.05		3.76	
12/07/14	0.17		1.41		4.83		2.67		5.38		2.50		2.36		1.96		2.93		3.60	
12/08/14	0.17		1.44		4.74		2.61		5.26		2.54		2.40		1.99		3.01		3.69	
12/09/14	0.15		1.42		4.65		2.56		5.17		2.53		2.39		1.97		2.98		3.64	
12/10/14	0.17		1.42		4.73		2.61		5.26		2.53		2.40		1.97		3.00		3.67	
12/11/14	0.16		1.43		4.73		2.61		5.26		2.51		2.40		1.96		2.99		3.67	
12/12/14	0.13		1.42		4.70		2.75		5.24		2.51		2.40		1.93		2.89		3.60	
12/13/14	0.15		1.41		4.64		2.58		5.00		2.47		2.40		1.94		2.74		3.46	
12/14/14	0.15		1.38		4.64		2.56		4.88		2.47		2.40		1.94		2.60		3.29	
12/15/14	0.11		1.35		4.68		2.64		4.87		2.30		2.39		1.94		2.51		3.15	
12/16/14	0.12		1.34		4.67		2.53		4.74		2.72		2.41		1.94		2.42		3.05	
12/17/14	0.10		1.32		4.67		2.42		4.72		2.54		2.44		1.92		2.34		2.95	
12/18/14	0.11		1.31		4.72		2.40		4.73		2.43		2.37		1.92		2.27		2.88	
12/19/14	0.13		1.27		4.68		2.25		4.64		2.41		2.42		1.93		2.19		2.81	
12/20/14	0.12		1.26		4.69		2.20		4.60		2.36		2.41		1.94		2.18		2.77	
12/21/14	0.05		1.24		4.64		2.08		4.52		2.35		2.40		1.94		2.10		2.70	
12/22/14	0.00		1.23		4.68		2.12		4.53		2.34		2.39		1.93		2.09		2.69	
12/23/14	0.16		1.20		4.67		2.06		4.51		2.34		2.40		1.93		2.03		2.62	
12/24/14	0.18		1.20		4.69		2.09		4.54		2.35		2.40		1.93		2.04		2.63	
12/25/14	0.18		1.22		4.58		2.88		4.40		2.38		2.48		1.95		2.03		2.64	
12/26/14	0.18		1.16		4.77		2.12		4.54		2.30		2.40		1.88		1.93		2.51	
12/27/14	0.19		1.16		4.69		2.99		4.48		2.30		2.43		1.88		1.92		2.51	
12/28/14	0.18		1.16		4.70		2.97		4.47		2.38		2.49		1.93		1.94		2.52	
12/29/14	0.18		1.15		4.93		2.98		4.47		2.35		2.45		1.87		1.93		2.50	
12/30/14	0.19		1.15		4.85		2.83		4.38		2.31		2.47		1.88		1.90		2.49	
12/31/14	0.19		1.14		4.94		2.92		4.47		2.35		2.46		1.87		1.88		2.45	
Monthly Average	0.14		1.32		4.69		2.57		4.84		2.44		2.41		1.94		2.49		3.13	
Analytical <sup>1</sup>	Conc (mg/L)	Date	Conc (mg/L)	Date	Conc (mg/L)	Date	Conc (mg/L)	Date	Conc (mg/L)	Date	Conc (mg/L)	Date	Conc (mg/L)	Date	Conc (mg/L)	Date	Conc (mg/L)	Date	Conc (mg/L)	Date
Perchlorate <sup>2</sup>	1900	12/1/2014	1900	12/1/2014	530	12/2/2014	260	12/2/2014	250	12/2/2014	950	12/1/2014	1000	12/1/2014	1100	12/1/2014	1100	12/1/2014	1200	12/1/2014
Hexavalent Chromium	Future Metric - Enhanced Operations																			
Total Chromium <sup>2</sup>	24	12/1/2014	21	12/1/2014	11	12/2/2014	3.9	12/2/2014	2.1	12/2/2014	0.92	12/1/2014	7.4	12/1/2014	9.3	12/1/2014	13	12/1/2014	17	12/1/2014

Notes:

Flow reported as gpm is a daily average calculated from the totalizer reading

1: Analytical results are reported from TestAmerica

2: Quarterly results, most recent sampling concentrations listed (Samples will be transitioned to monthly reporting in the future)

Table 3 - Interceptor Well Field (IWF) Operational Metrics

Nevada Environmental Response Trust   Groundwater Extraction and Treatment System   Enhanced Operational Metrics																				
Date	I-Q		I-R		I-S		I-T		I-U		I-V		I-W		I-X		I-Y		I-Z	
	Flow (gpm)	Level (ft)	Flow (gpm)	Level (ft)	Flow (gpm)	Level (ft)	Flow (gpm)	Level (ft)	Flow (gpm)	Level (ft)	Flow (gpm)	Level (ft)	Flow (gpm)	Level (ft)	Flow (gpm)	Level (ft)	Flow (gpm)	Level (ft)	Flow (gpm)	Level (ft)
12/01/14	0.47		2.58		4.91		0.13		0.93		5.25		0.84		3.28		1.36		2.60	
12/02/14	0.46		2.51		4.92		0.00		0.92		1.76		0.77		3.27		1.35		2.73	
12/03/14	0.48		2.46		4.64		0.00		0.94		5.12		0.61		3.27		1.26		2.54	
12/04/14	0.49		2.50		4.82		0 <sup>6</sup>		0.94		5.17		1.03		3.39		1.30		2.60	
12/05/14	0.48		2.51		5.00		0.39		0.93		5.60		1.14		3.43		1.35		2.81	
12/06/14	0.49		2.52		6.99		0.53		0.94		6.58		1.15		3.47		1.36		2.64	
12/07/14	0.48		2.41		3.11		0.48		0.91		4.34		1.10		3.37		1.32		2.79	
12/08/14	0.48		2.26		4.97		0.49		0.93		5.44		1.11		3.42		1.33		2.74	
12/09/14	0.47		2.27		4.97		0.46		0.92		5.34		1.12		3.38		1.34		2.70	
12/10/14	0.48		2.28		4.97		0.49		0.93		5.43		1.10		3.38		1.32		2.74	
12/11/14	0.48		2.28		4.98		0.49		0.93		5.44		1.14		3.38		1.29		2.74	
12/12/14	0.47		2.26		4.99		0.54		0.92		5.43		1.11		3.37		1.21		8.61	
12/13/14	0.48		2.25		5.00		0.46		0.92		4.68		1.11		3.38		1.19		8.37	
12/14/14	0.47		2.24		5.04		0.53		0.92		6.23		1.12		3.37		1.20		8.33	
12/15/14	0.48		2.27		5.06		0.49		0.92		5.38		1.06		3.37		1.13		8.36	
12/16/14	0.47		2.37		5.07		0.48		0.92		5.35		1.04		3.36		0 <sup>7</sup>		8.28 <sup>8</sup>	
12/17/14	0.47		2.31		5.06		0.49		0.93		5.34		1.04		3.35		0.93		8.10	
12/18/14	0.47		2.23		5.10		0.48		0.93		5.43		1.00		3.33		1.43		8.17	
12/19/14	0.46		2.24		5.08		0.46		0.93		5.35		1.00		3.32		1.44		7.99 <sup>8</sup>	
12/20/14	0.47		2.19		5.07		0.50		0.93		5.35		1.00		3.33		1.42		7.97	
12/21/14	0.46		2.21		5.09		0.49		0.93		5.27		0.99		3.31		1.44		7.85	
12/22/14	0.47		2.21		5.08		0.49		0.93		5.32		1.01		3.31		1.45		7.59	
12/23/14	0.46		2.24		5.11		0.48		0.92		5.35		0.95		3.30		1.44		7.57	
12/24/14	0.47		2.21		5.08		0.47		0.93		5.38		0.98		3.31		1.47		7.60	
12/25/14	0.46		2.25		5.15		0.48		0.95		5.24		1.01		3.35		1.47		7.43	
12/26/14	0.45		2.19		5.00		0.51		0.91		5.41		0.98		3.24		1.45		7.72	
12/27/14	0.45		2.23		5.00		0.43		0.93		5.32		1.00		3.26		1.46		7.59	
12/28/14	0.46		2.29		5.14		0.53		0.94		5.33		0.98		3.33		1.52		7.58	
12/29/14	0.46		2.24		5.07		0.44		0.94		5.31		0.97		3.30		1.50		7.58	
12/30/14	0.46		2.23		5.14		0.48		0.95		5.21		0.98		3.32		1.50		7.45	
12/31/14	0.46		2.27		5.17		0.48		0.95		5.30		0.98		3.29		1.50		7.57	
Monthly Average	0.47		2.31		5.02		0.44		0.93		5.24		1.01		3.34		1.36		5.90	
Analytical <sup>1</sup>	Conc (mg/L)	Date	Conc (mg/L)	Date	Conc (mg/L)	Date	Conc (mg/L)	Date	Conc (mg/L)	Date	Conc (mg/L)	Date	Conc (mg/L)	Date	Conc (mg/L)	Date	Conc (mg/L)	Date	Conc (mg/L)	Date
Perchlorate <sup>2</sup>	1800	12/1/2014	1500	12/1/2014	640	12/1/2014	1800	12/1/2014	1800	12/1/2014	920	12/2/2014	1100	12/1/2014	1900	12/1/2014	1400	12/1/2014	280	12/2/2014
Hexavalent Chromium	Future Metric - Enhanced Operations																			
Total Chromium <sup>2</sup>	23	12/1/2014	0.53	12/1/2014	1.7	12/1/2014	24	12/1/2014	23	12/1/2014	11	12/2/2014	14	12/1/2014	12	12/1/2014	0.82	12/1/2014	6.7	12/2/2014

Notes:  
 Flow reported as gpm is a daily average calculated from the totalizer reading  
 1: Analytical results are reported from TestAmerica  
 2: Quarterly results, most recent sampling concentrations listed (Samples will be transitioned to monthly reporting in the future)  
 6: I-E had a current fault and was reset  
 7: PVC piping on I-Y spun apart. Pump repaired same day and back online at 3:30 PM  
 8: Adjusted I-Z flow down

Table 4 - Treatment Plant Operational Metrics

Nevada Environmental Response Trust   Groundwater Extraction and Treatment System   Enhanced Operational Metrics																
Date	LS #2	GWTP Effluent <sup>1</sup>				GW-11 Influent <sup>2</sup>				FBR Plant Influent <sup>3</sup>						
	Flow (gpm)	Flow (gpm)	TA - Cr (TR) (mg/L)	TA - Cr (VI) (mg/L)	TA - ClO <sub>2</sub> (mg/L)	Flow (gpm)	Cr (TR) (mg/L)	Cr (VI) (mg/L)	ClO <sub>2</sub> (mg/L)	Flow <sup>3</sup> (gpm)	TA - ClO <sub>2</sub> (mg/L)	ETI - ClO <sub>2</sub> (mg/L)	TA - ClO <sub>2</sub> (mg/L)	TA - NO <sub>3</sub> - N (mg/L)	TA-Cr (TR) (mg/L)	TA-Cr (VI) (mg/L)
12/01/14	877	56				0				932		99		10	0.06	0.04
12/02/14	872	57				0				929		107				
12/03/14	876	54				0				930		101				
12/04/14	872	54	0.83	ND	780	0				926		95				
12/05/14	876	57				0				933		103				
12/06/14	875	57				0				932	110	103				
12/07/14	875	58				0				933		104				
12/08/14	874	58				0				932		104		10	0.19	0.06
12/09/14	876	58				0				934		102				
12/10/14	873	57				0				930		101				
12/11/14	846	58	0.36	0.001	1000	0				904		101	210			
12/12/14	875	68				0				943		103				
12/13/14	875	68				0				943	120	104				
12/14/14	873	68				0				940		102				
12/15/14	875	67				0				942		103				
12/16/14	874	66				0				940		101		12	0.09	0.07
12/17/14	876	66				0				942		100				
12/18/14	875	66	0.59	ND	830	0				941		101				
12/19/14	875	65				0				940		103				
12/20/14	874	65				0				939	120	104				
12/21/14	874	65				0				940		103				
12/22/14	875	64				0				939		99		11	0.06	0.06
12/23/14	874	64				0				938		102				
12/24/14	874	64				0				939		106				
12/25/14	875	64	0.23	ND	770	0				939		101				
12/26/14	874	64				0				937		103				
12/27/14	875	63				0				938	120	105				
12/28/14	874	64				0				938		102				
12/29/14	875	63				0				938		96		11	0.19	0.07
12/30/14	875	64				0				939		102				
12/31/14	875	63				0				938		101				
Monthly Average	874	62	0.50	0.001	845	0				936	118	102	210	11	0.12	0.06

Notes:  
 Flow reported as gpm is a daily average calculated from the totalizer reading  
 ND = Not detected above laboratory method detection limit (ClO<sub>2</sub> = 0.5 ug/L; ClO<sub>3</sub> = 10 ug/L; NO<sub>3</sub>-N= 0.055 mg/L, CR(VI) = 0.25 ug/L)  
 1: ETI = Envirogen internal process control data, TA = TestAmerica data  
 2: GW-11 currently offline. Combined LS#2 and GWTP flow is currently being sent to FBRs  
 3: FBR Plant Influent Flow calculated as the sum of GWTP Effluent Flow + LS2 Flow

Table 4 - Treatment Plant Operational Metrics

Nevada Environmental Response Trust   Groundwater Extraction and Treatment System   Enhanced Operational Metrics														
Date	1st Stage FBR Influent			2nd Stage FBR Influent			FBR Plant Effluent <sup>1</sup>							
	Flow (gpm)	pH (s.u.)	ORP (mV)	Flow (gpm)	pH (s.u.)	ORP (mV)	Flow (gpm)	TA - ClO <sub>2</sub> (mg/L)	ETI - ClO <sub>2</sub> (mg/L)	TA - ClO <sub>3</sub> (mg/L)	TA-Cr (TR) (mg/L)	TA-Cr (VI) (mg/L)	TA - SO <sub>4</sub> (mg/L)	ETI - Turbidity (NTU)
12/01/14		NA <sup>4</sup>	NA <sup>4</sup>		NA <sup>4</sup>	NA <sup>4</sup>	830		ND		0.01	ND		9
12/02/14		7.0	-396		7.3	-396	831		ND					19
12/03/14		7.0	-398		7.3	-402	703		ND					11
12/04/14		7.0	-394		7.3	-397	808		ND					4
12/05/14		7.0	-397		7.3	-398	770		ND					4
12/06/14		7.0	-389		7.3	-398	807	ND	ND					11
12/07/14		7.0	-389		7.3	-397	807		ND					1
12/08/14		7.0	-391		7.3	-398	787		ND		0.01	ND		10
12/09/14		7.0	-391		7.3	-400	796		ND					8
12/10/14		7.0	-391		7.3	-404	819		ND					11
12/11/14		7.0	-391		7.3	-405	819		ND	ND			1200	11
12/12/14		7.0	-390		7.3	-400	816		ND					7
12/13/14		7.0	-389		7.3	-400	809	ND	ND					6
12/14/14		7.0	-386		7.3	-400	753		ND					9
12/15/14		7.0	-390		7.3	-403	713		ND		0.02	ND		14
12/16/14		7.0	-392		7.3	-404	795		ND					11
12/17/14		7.0	-390		7.3	-403	776		ND					15
12/18/14		7.0	-385		7.3	-401	802		ND					11
12/19/14		7.0	-385		7.3	-403	770		ND					23
12/20/14		7.0	-382		7.3	-402	792	ND	ND					10
12/21/14		6.9	-378		7.3	-401	784		ND					95
12/22/14		6.9	-375		7.2	-400	745		ND		0.013	ND		95
12/23/14		6.9	-370		7.2	-398	729		ND					14
12/24/14		6.9	-375		7.3	-400	793		ND					8
12/25/14		7.0	-372		7.2	-395	818		ND					10
12/26/14		6.9	-373		7.2	-397	811		ND					5
12/27/14		6.9	-373		7.2	-397	807	ND	ND					0
12/28/14		7.0	-373		7.2	-397	798		ND					1
12/29/14		7.0	-373		7.2	-398	779		ND		0.02	ND		15
12/30/14		7.0	-373		7.3	-390	750		ND					8
12/31/14		7.0	-374		7.2	-398	720		ND					17
Monthly Average		7.0	-384		7.3	-399	785	ND	ND	ND	0.01	ND	1200	15

Notes:

Flow reported as gpm is a daily average calculated from the totalizer reading

ND = Not detected above laboratory method detection limit (ClO<sub>2</sub> = 0.5 ug/L; ClO<sub>3</sub> = 10 ug/L; NO<sub>3</sub>-N= 0.055 mg/L, CR(VI) = 0.25 ug/L)

1: ETI = Envirogen internal process control data, TA = TestAmerica data

4: NA = Not available. No data reported due to computer outages

GW-11 Level Monitoring		
Date	Field Measurement (ft)	Volume (MG)
12/11/2014	23.9	44.7
12/30/2014	23.7	45.0

GW-11 Leak Detection Monitoring				
Date	Amount Pumped (gallons)			
	NW Corner	NE Corner	SW Corner	SE Corner
12/11/2014	0	575	0	0
12/30/2014	0	840	30	0

GW-11 Composite Sample <sup>1</sup>		
Analytes	Concentration	Units
Perchlorate	NA <sup>2</sup>	mg/L
Chlorate	NA <sup>2</sup>	mg/L
Ammonia as N	NA <sup>2</sup>	mg/L
Total Phosphorus	NA <sup>2</sup>	mg/L
Total Dissolved Solids (TDS)	NA <sup>2</sup>	mg/L
Total Suspended Solids (TSS)	NA <sup>2</sup>	mg/L
pH	NA <sup>2</sup>	s.u.
Calcium	NA <sup>2</sup>	mg/L
Iron	NA <sup>2</sup>	mg/L
Chromium (total)	NA <sup>2</sup>	mg/L
Chromium VI	NA <sup>2</sup>	mg/L
Chloride	NA <sup>2</sup>	mg/L
Nitrate as N	NA <sup>2</sup>	mg/L
Sulfate	NA <sup>2</sup>	mg/L

Notes:

1: Corner Composite Sample collected on: not collected.

2: NA = Not Available. Corner composite sample data not collected because GW-11 is currently offline. Sampling will resume when GW-11 comes online.



Nevada Environmental Response Trust   Groundwater Extraction and Treatment System   Enhanced Operational Metrics						
Date	Flow <sup>1</sup> (gpm)	FBR Influent Concentration			Influent Function Load <sup>2</sup> (lbs/day)	6 Month Rolling Average (lbs/day)
		ClO <sub>4</sub> (mg/L)	NO <sub>3</sub> as N (mg/L)	ClO <sub>3</sub> (mg/L)		
Dec 2013	905	101	12.2	230	741	759
Jan 2014	932	120	11.7	210	759	776
Feb 2014	950	113	12.0	210	762	778
Mar 2014	958	106	9.8	210	732	768
Apr 2014	966	56	4.0	110	376	674
May 2014	951	84	8.9	170	594	660
June 2014	906	123	9.0	220	735	660
July 2014	786	123	8.8	220	636	639
Aug 2014	880	116	10.6	190	663	623
Sept 2014	828	120	10.8	200	649	609
Oct 2014	825	113	12.0	200	645	654
Nov 2014	828	108	9.4	160	548	646
Dec 2014	785	118	10.8	210	628	628

Notes:

Concentrations and flow are presented as monthly average

1: Flow used in loading calculation is average monthly FBR effluent flow to be consistent with historical loading calculations

2: FBR loading calculated as  $[0.9 \cdot \text{NO}_3 \text{ as N} + 0.17 \cdot \text{ClO}_3 + 0.18 \cdot \text{ClO}_4 \cdot \text{Flow} \cdot 1440 / 1000000 \cdot 8.34]$

Figure 1 - GW-11 Pond Volume and Perchlorate Concentration

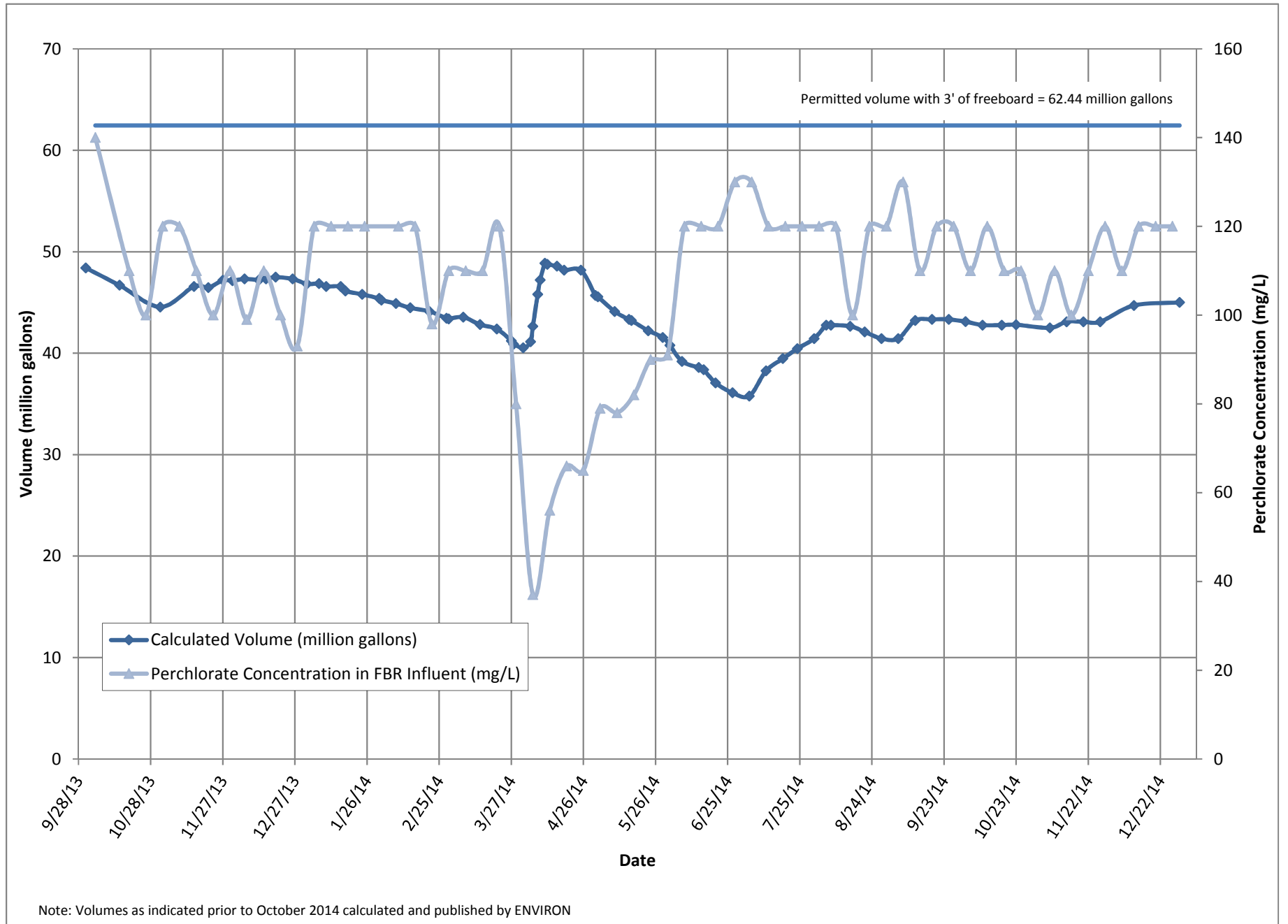


Figure 2 - FBR Equivalent Loading Calculation

