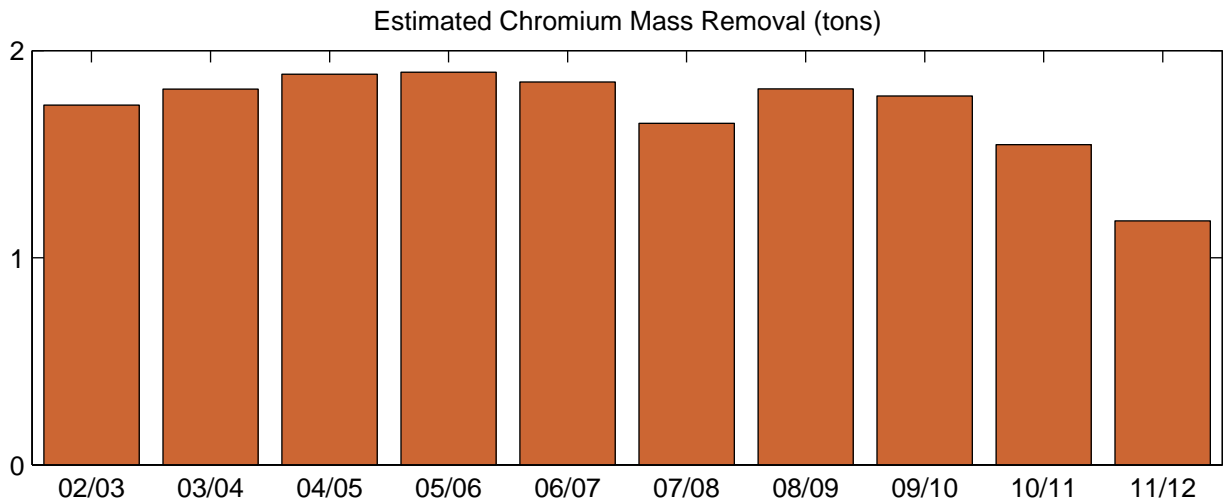
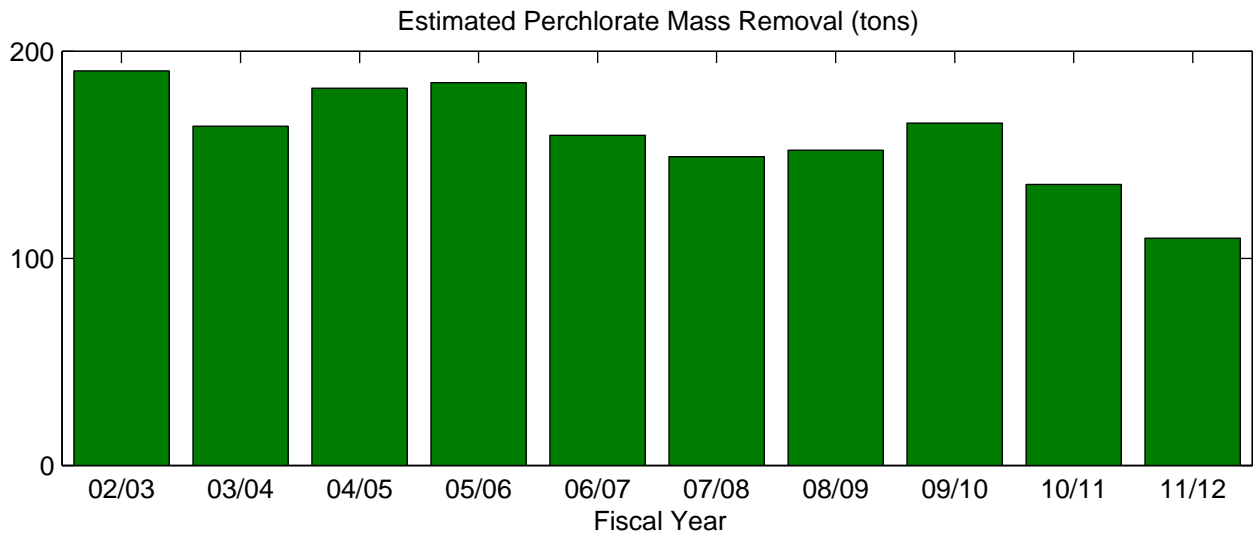
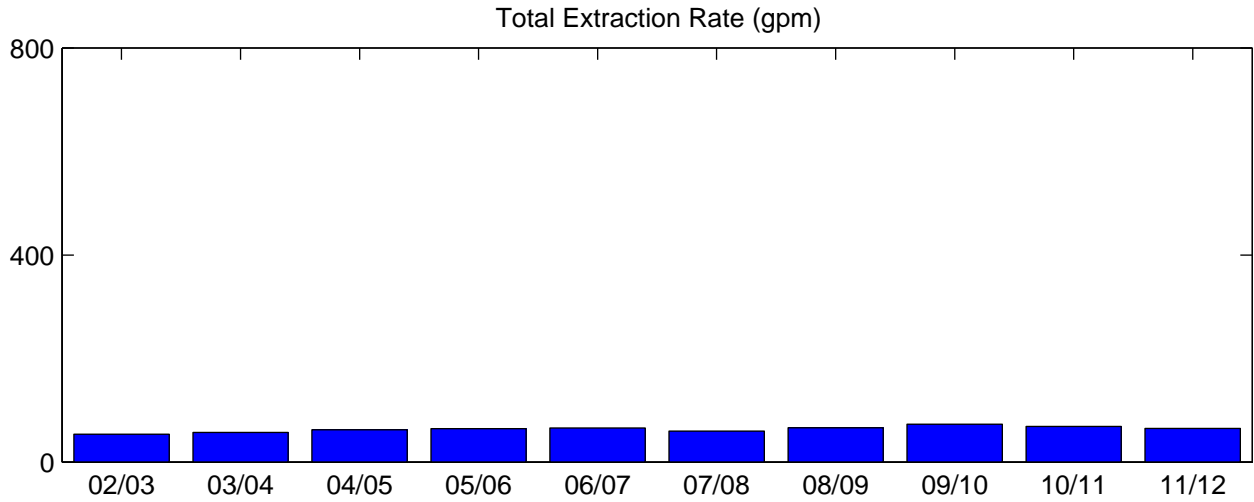
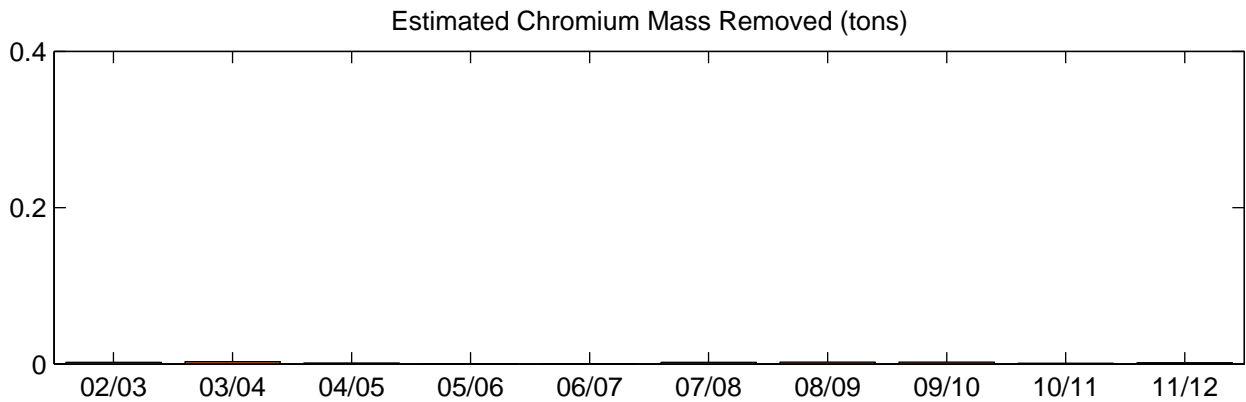
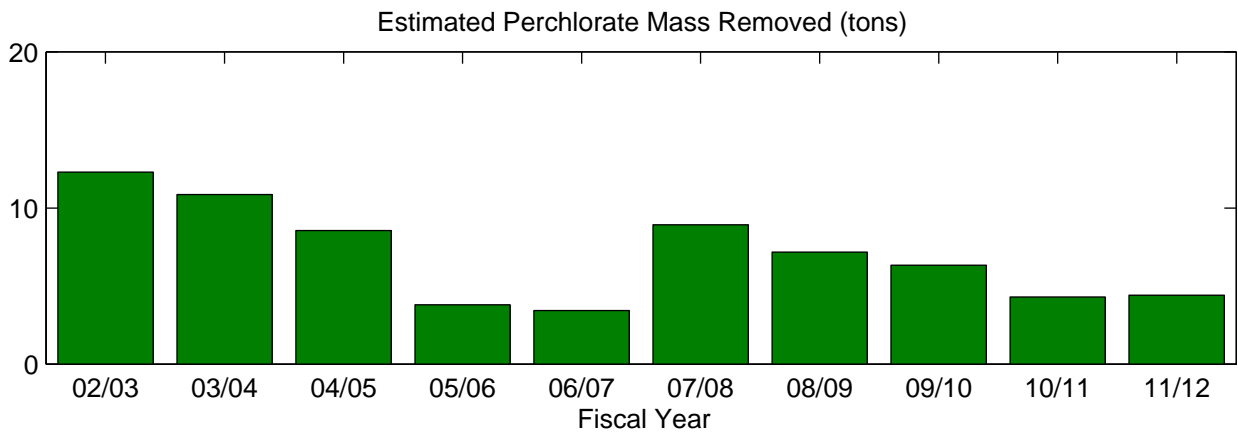
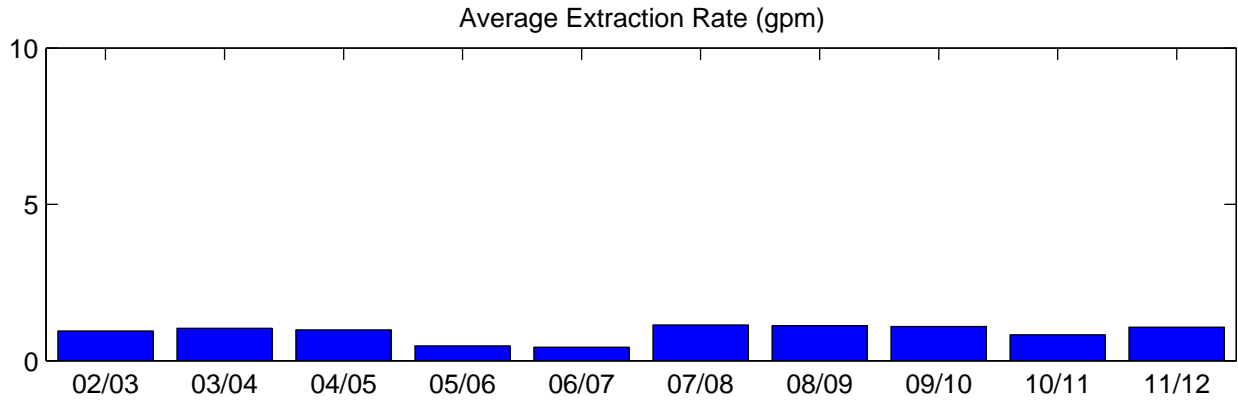
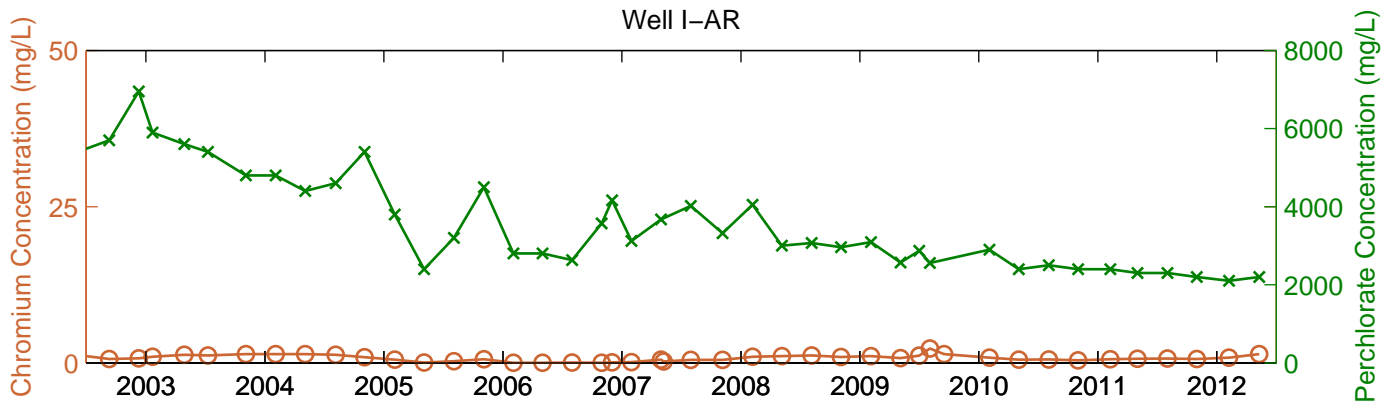
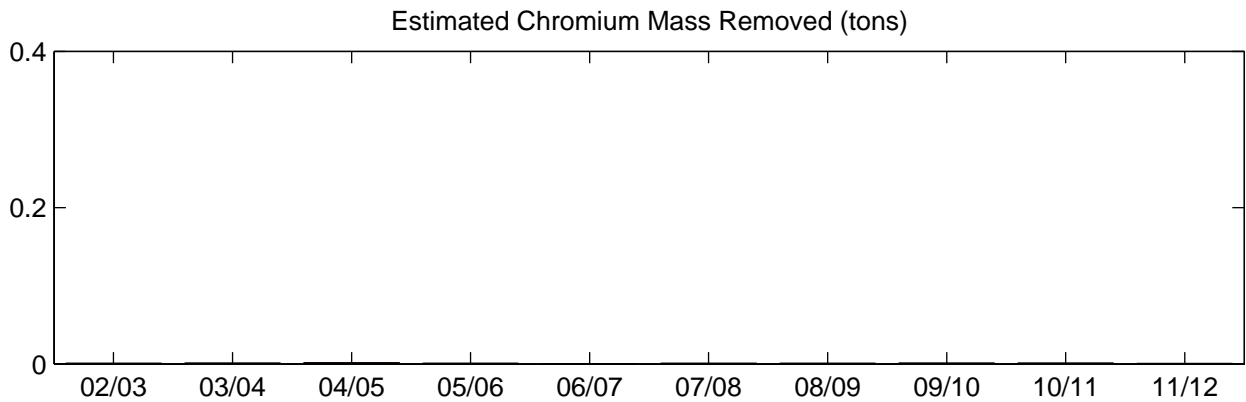
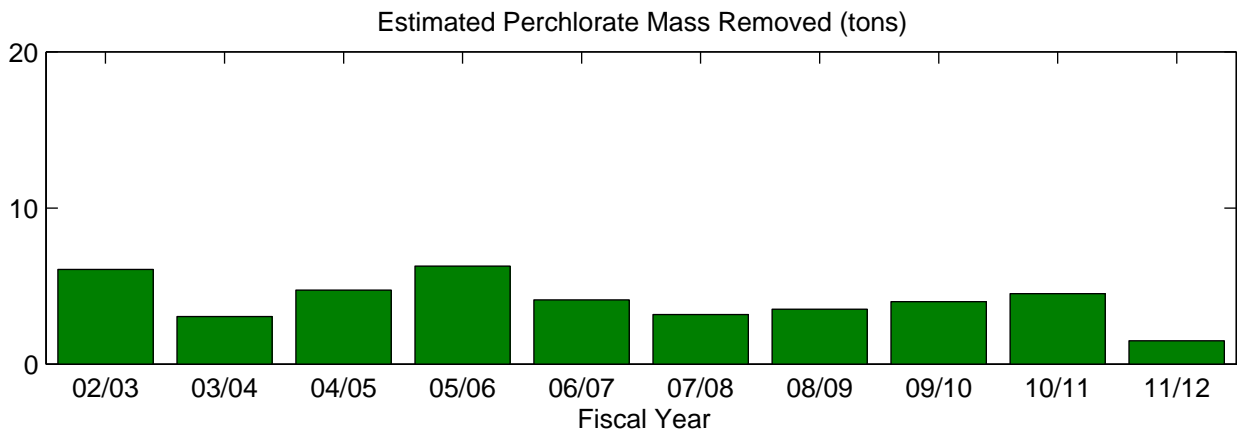
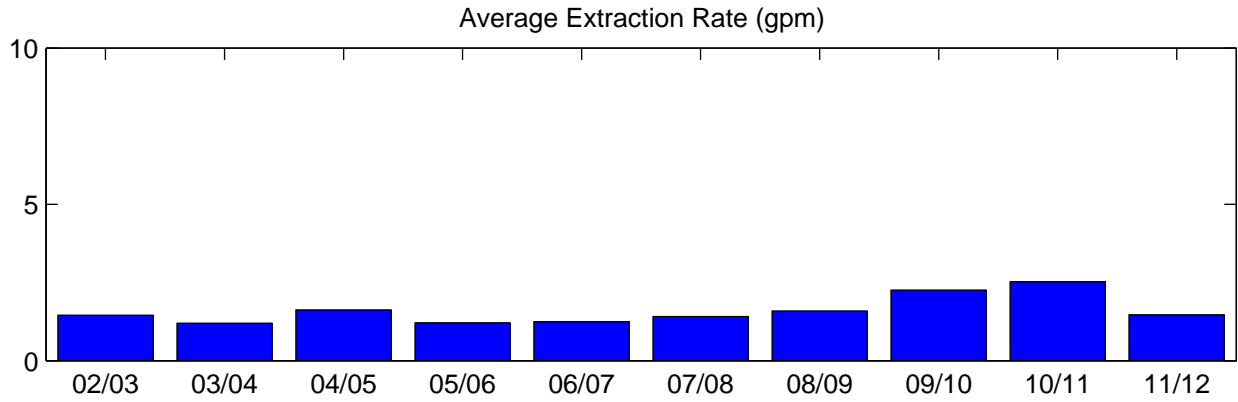
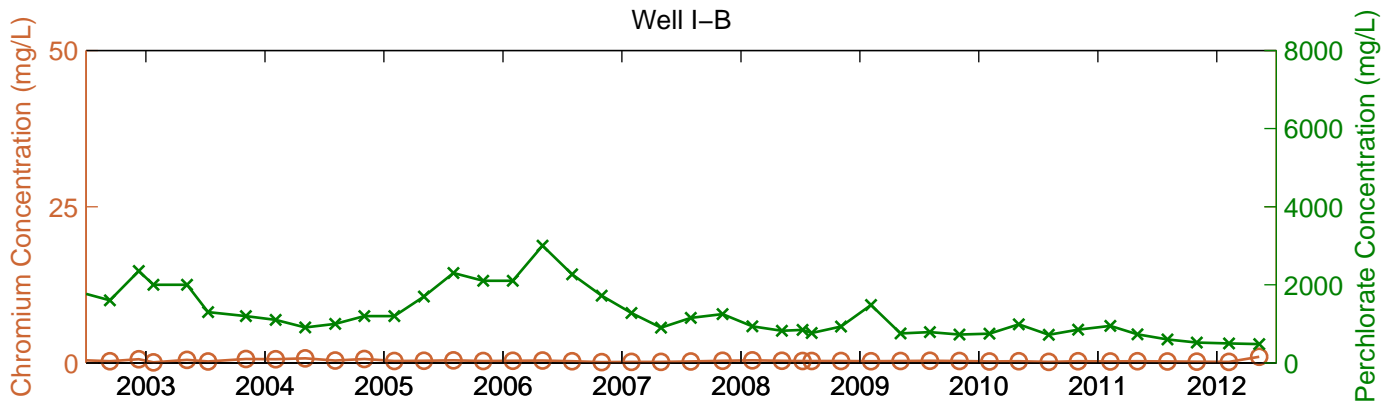


Interceptor Well Field (IWF) Summary

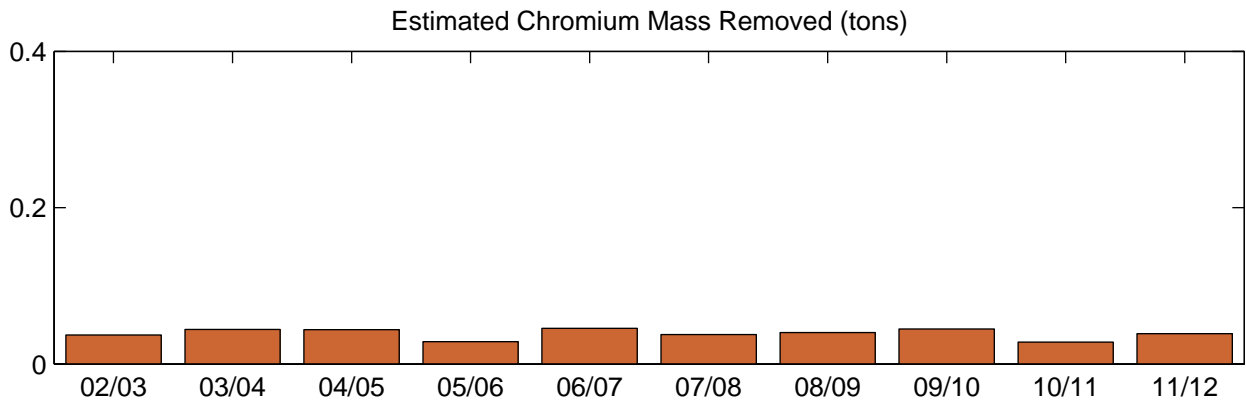
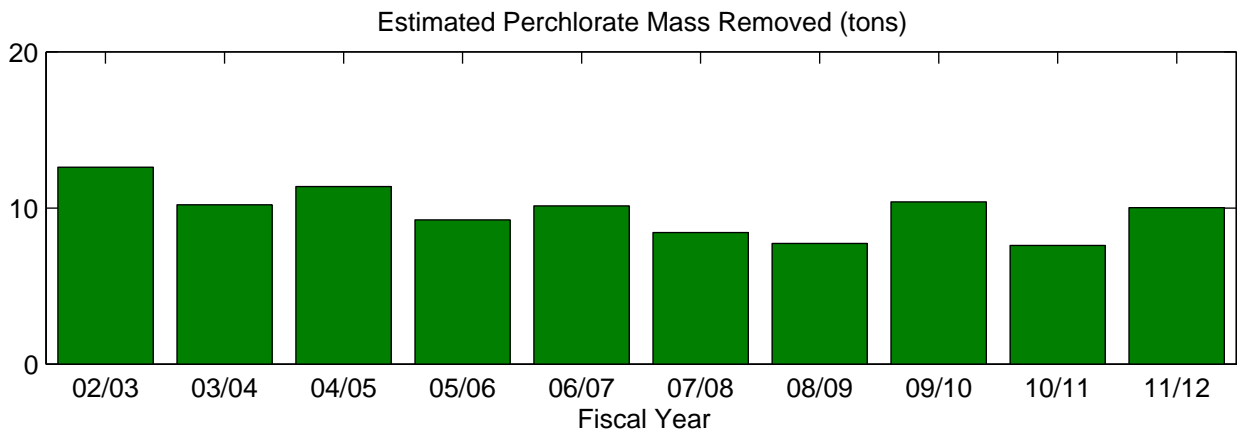
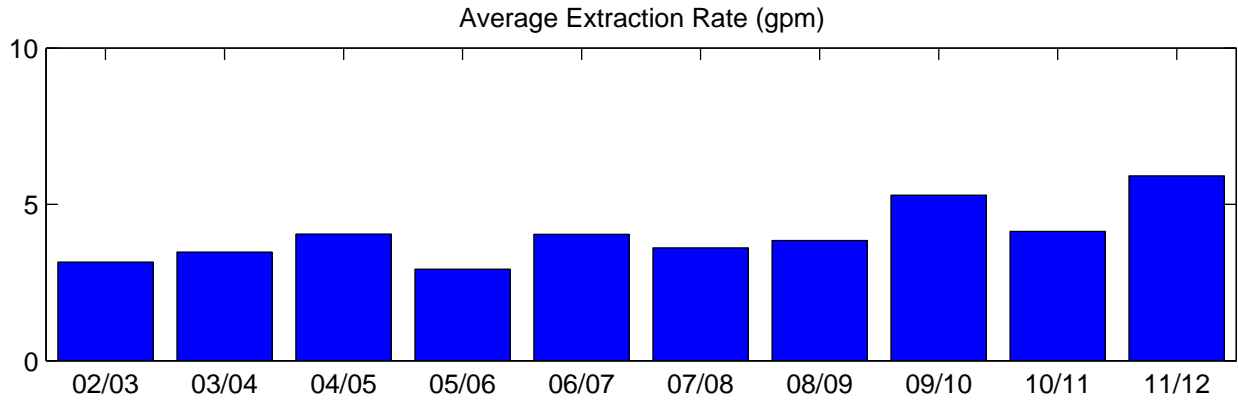
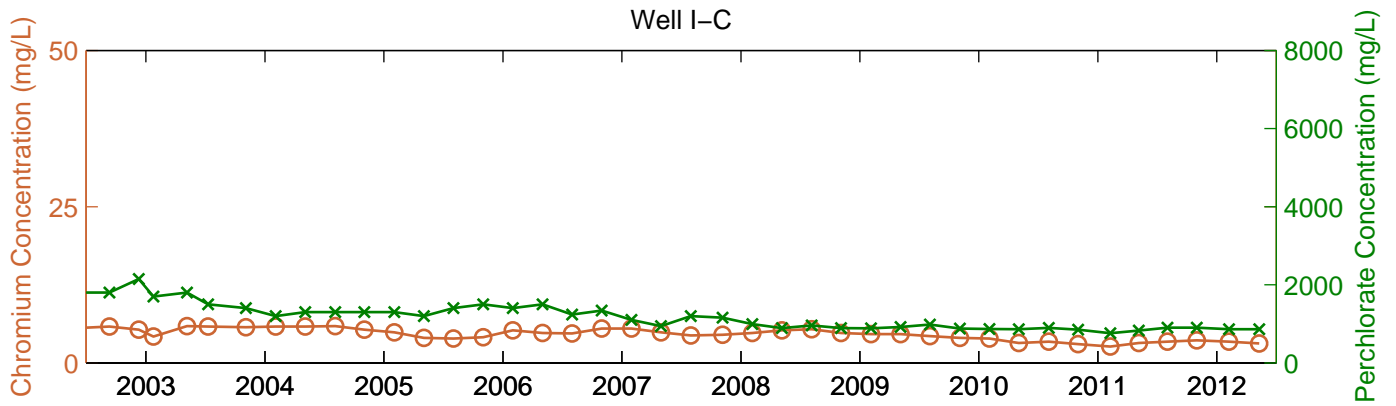




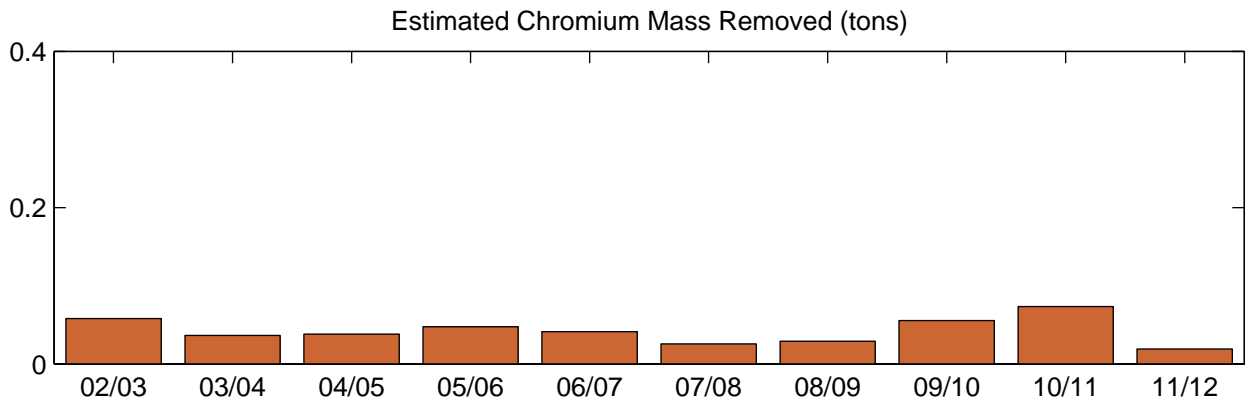
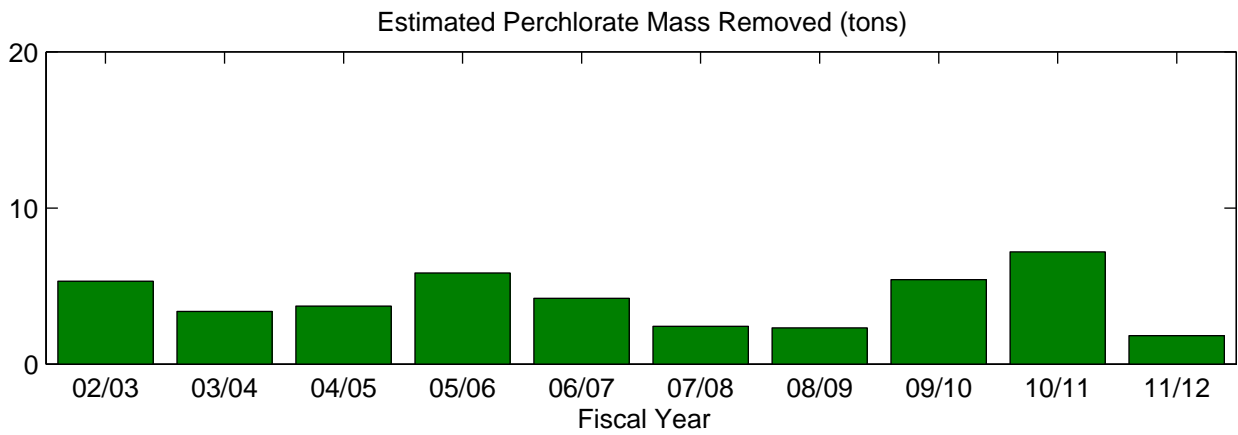
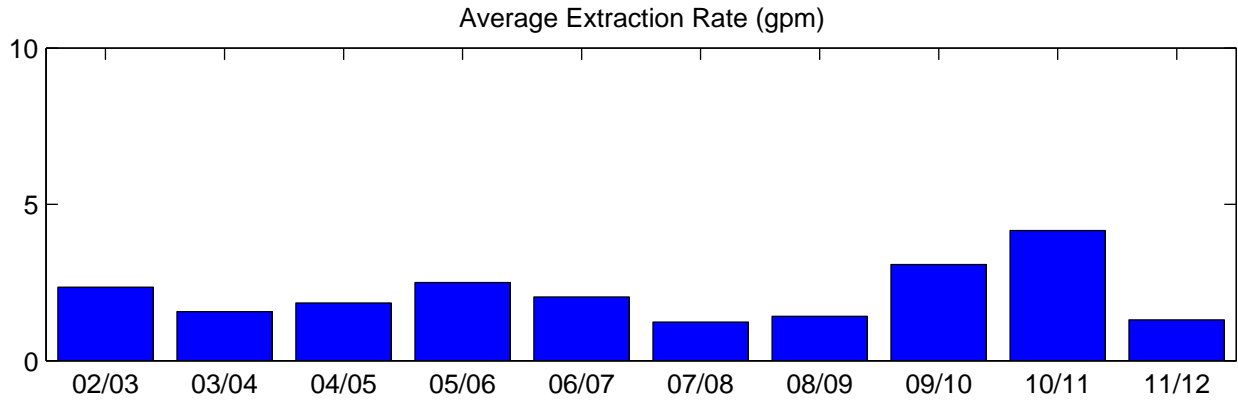
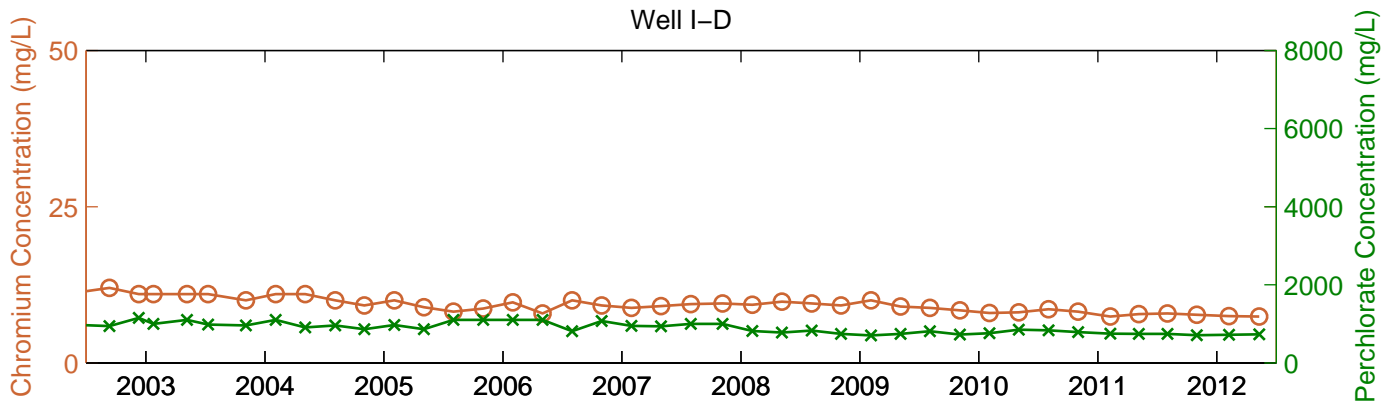
* Extraction rates for FY02/03 are the average of discharge rates reported for December 2002 and June 2003.



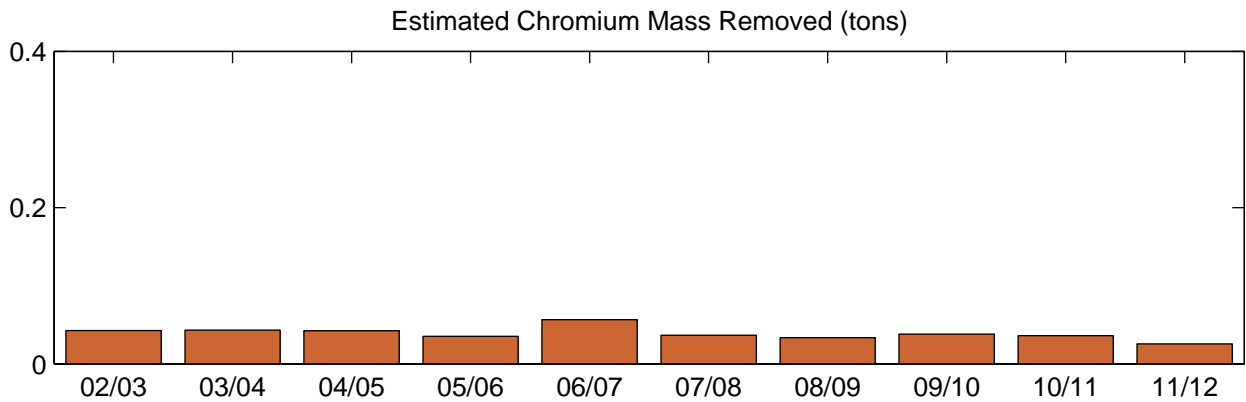
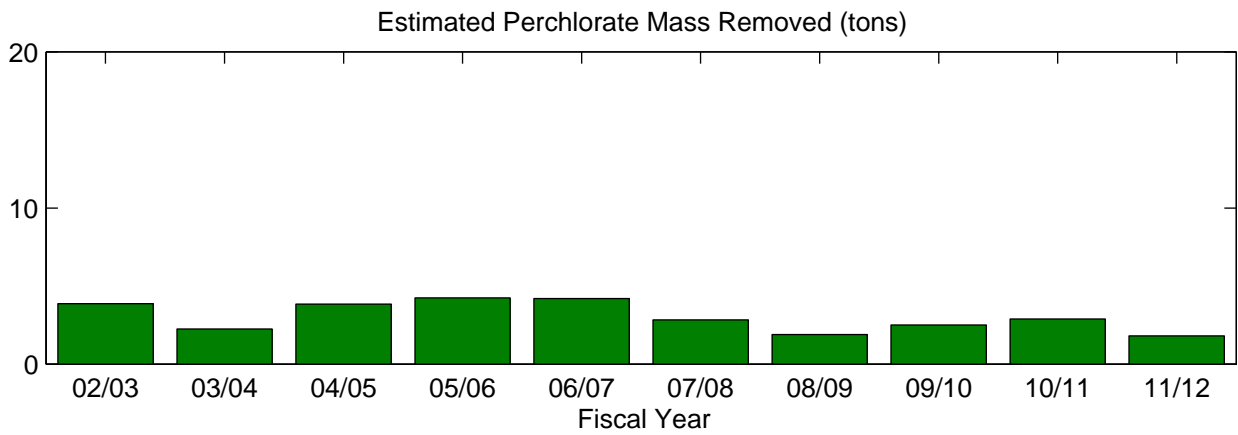
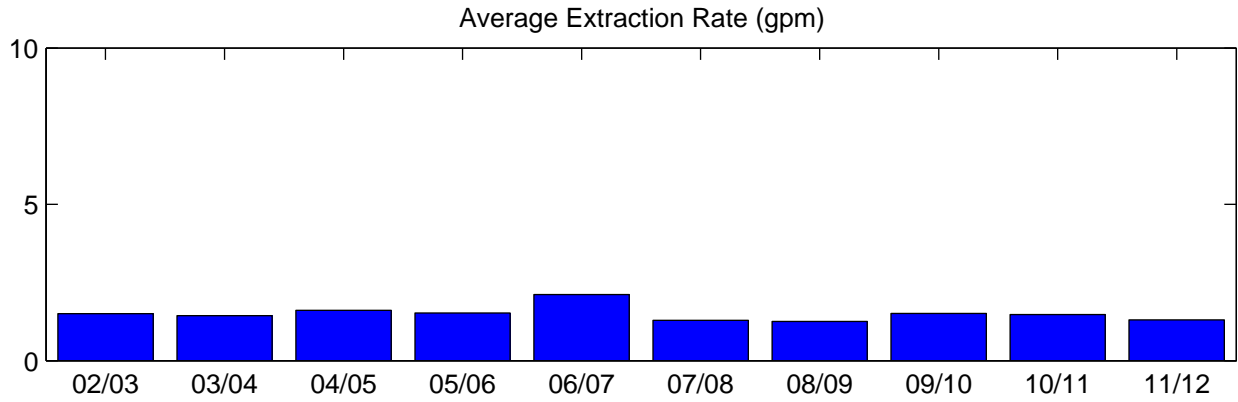
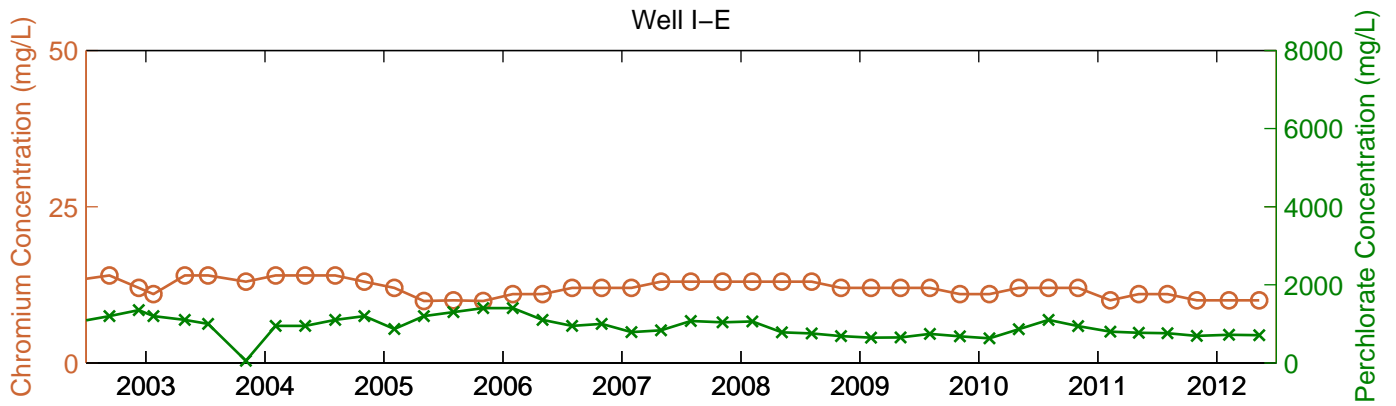
* Extraction rates for FY02/03 are the average of discharge rates reported for December 2002 and June 2003.



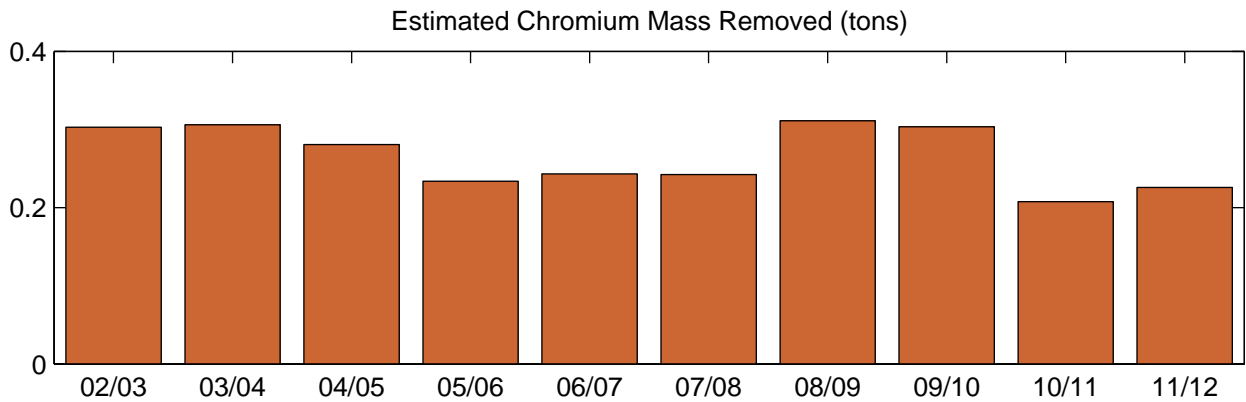
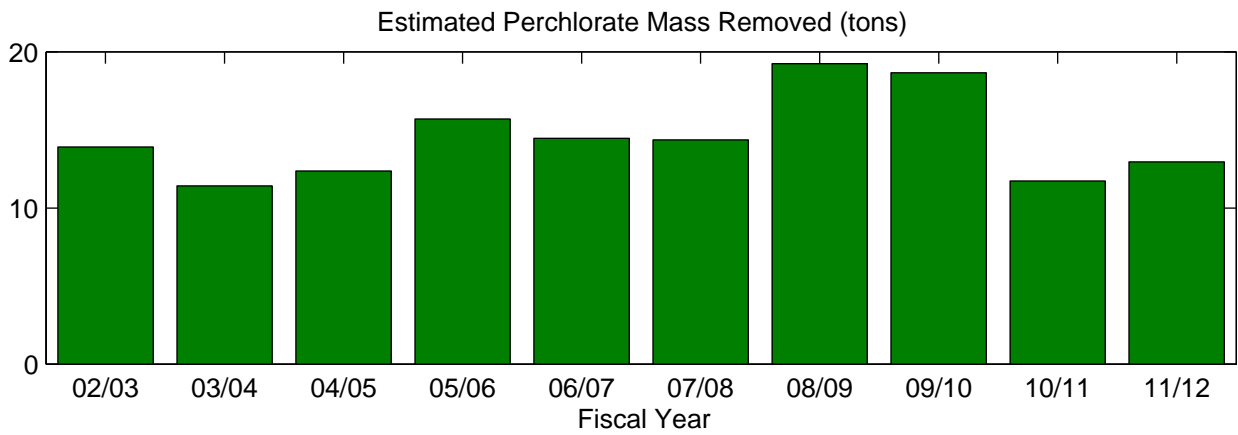
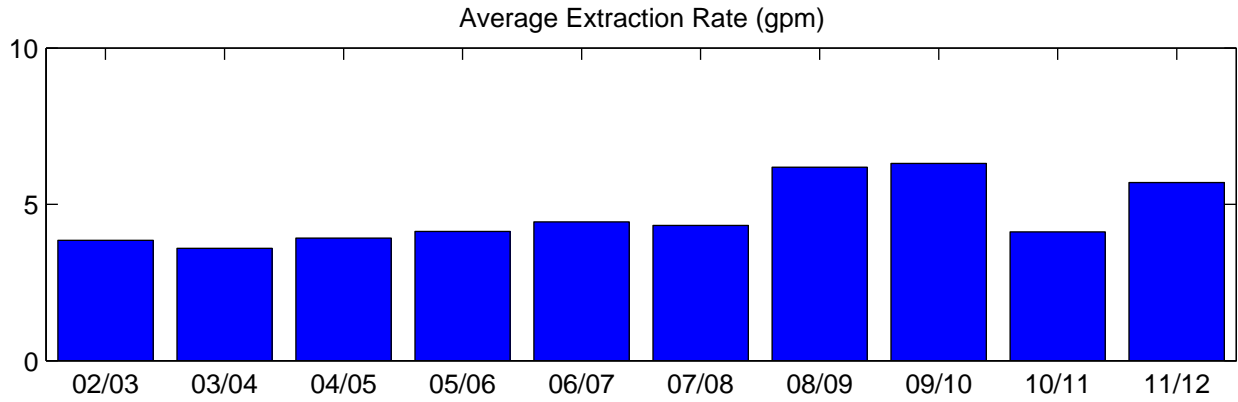
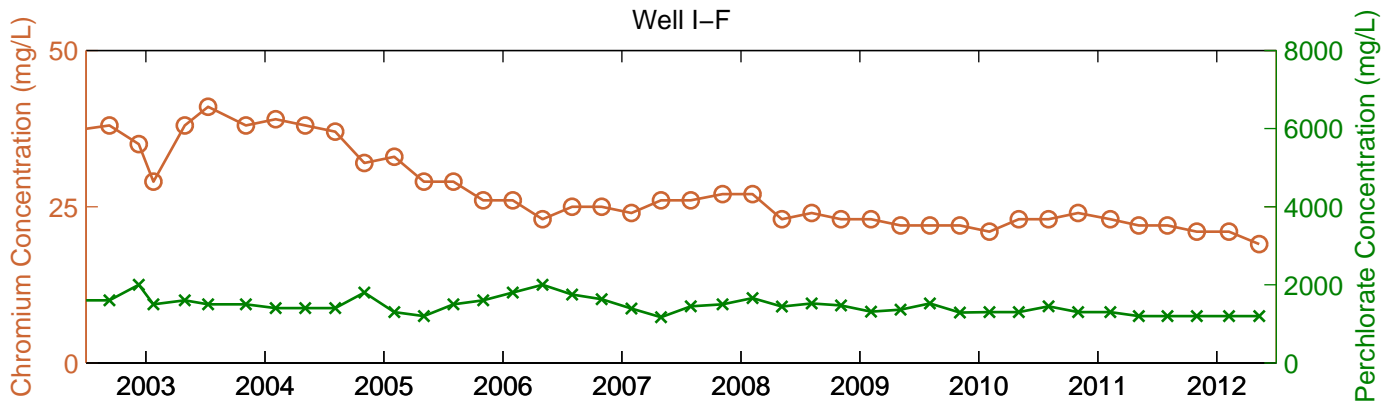
* Extraction rates for FY02/03 are the average of discharge rates reported for December 2002 and June 2003.



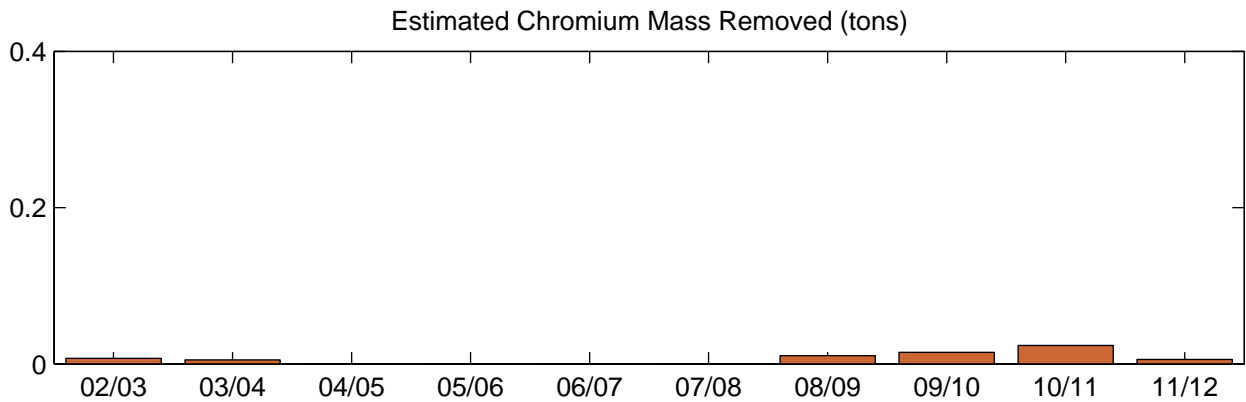
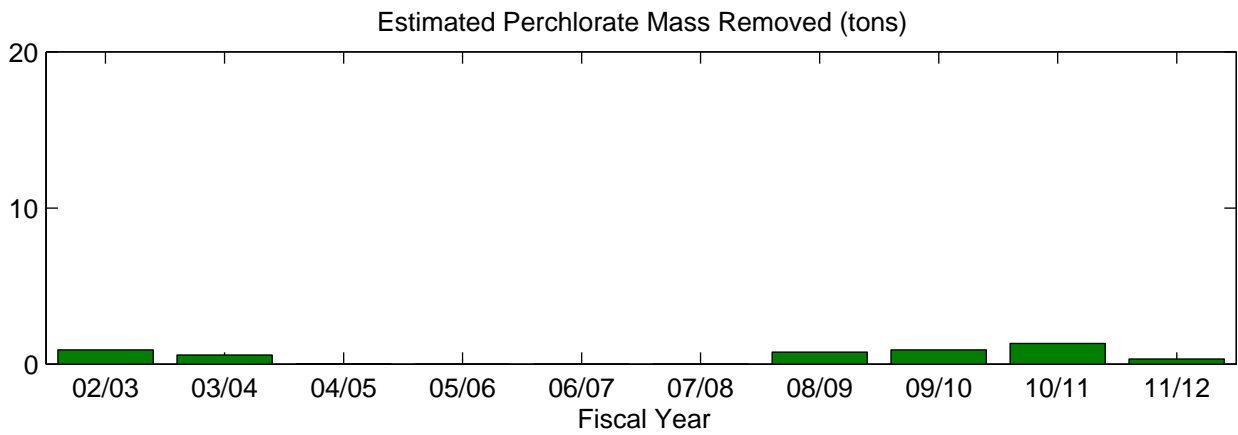
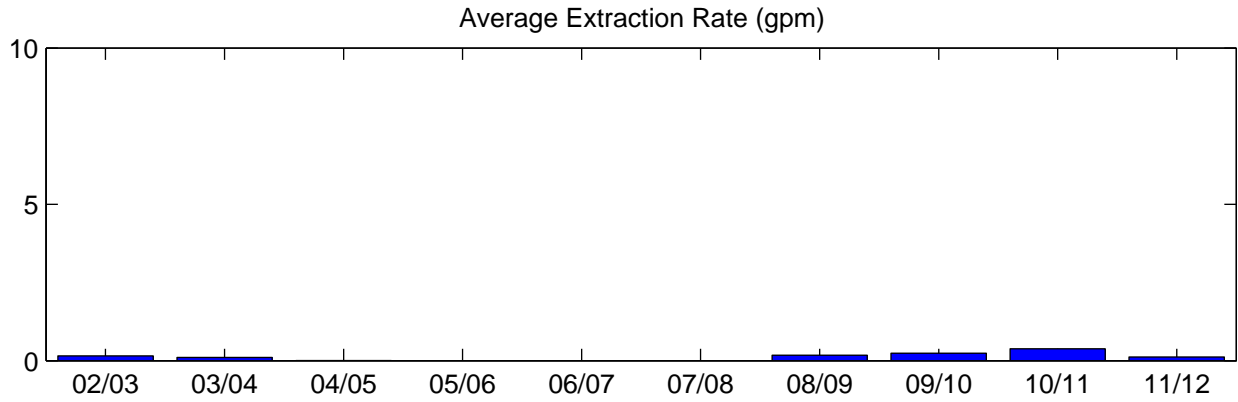
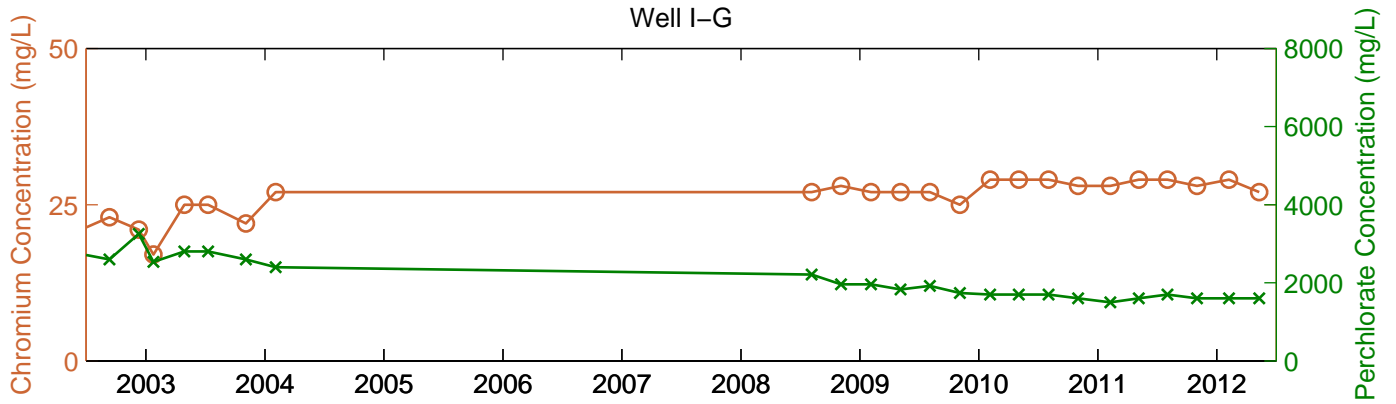
* Extraction rates for FY02/03 are the average of discharge rates reported for December 2002 and June 2003.



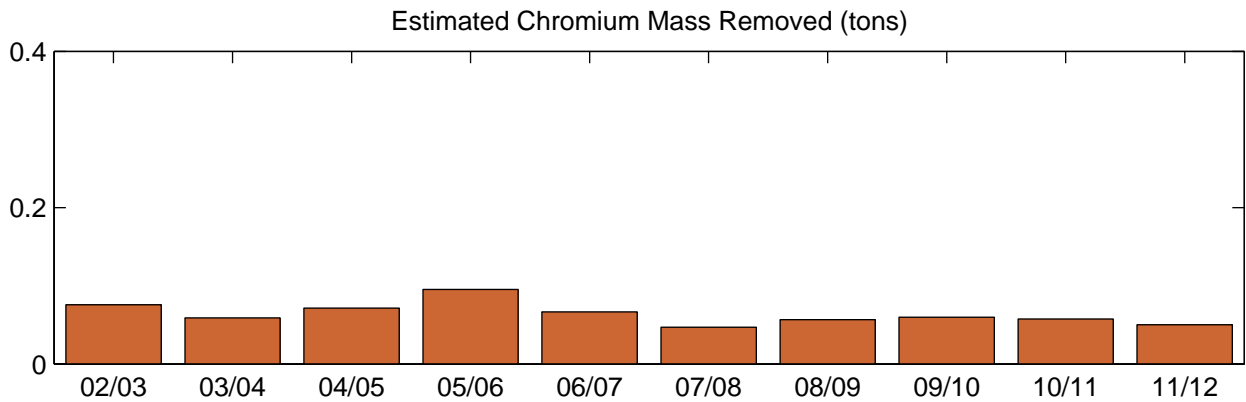
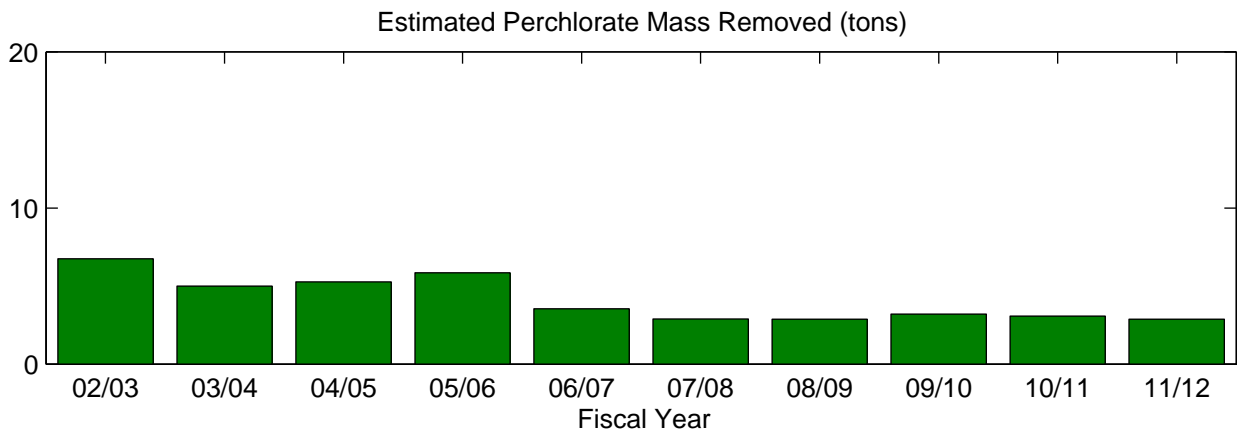
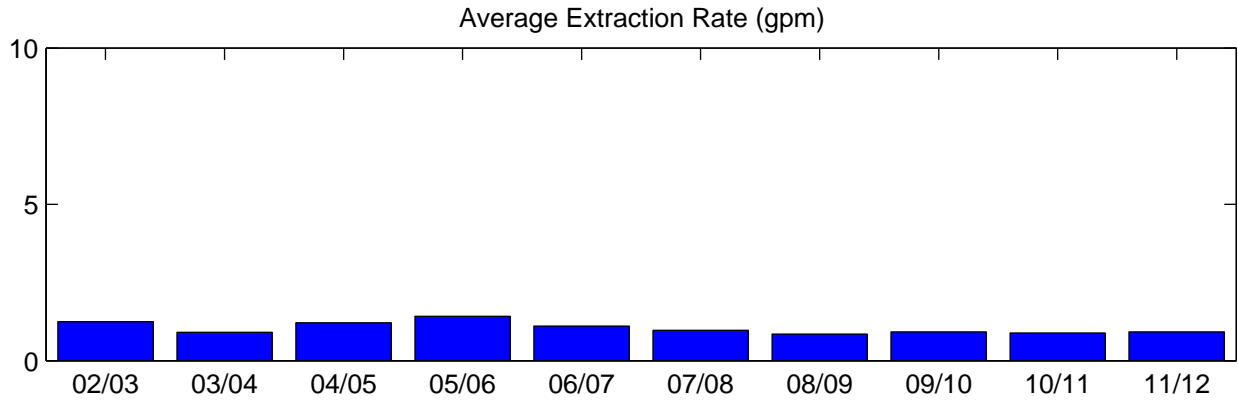
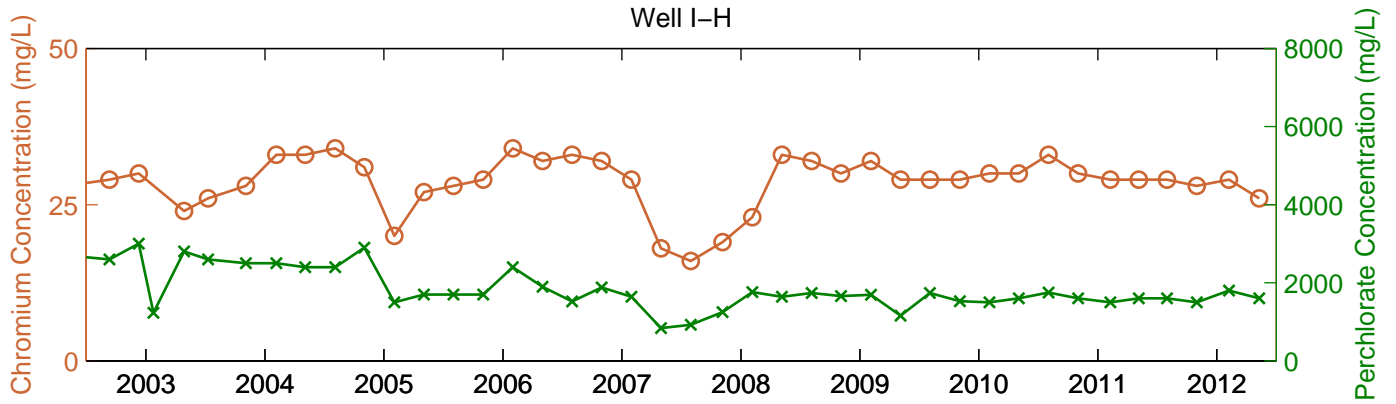
* Extraction rates for FY02/03 are the average of discharge rates reported for December 2002 and June 2003.



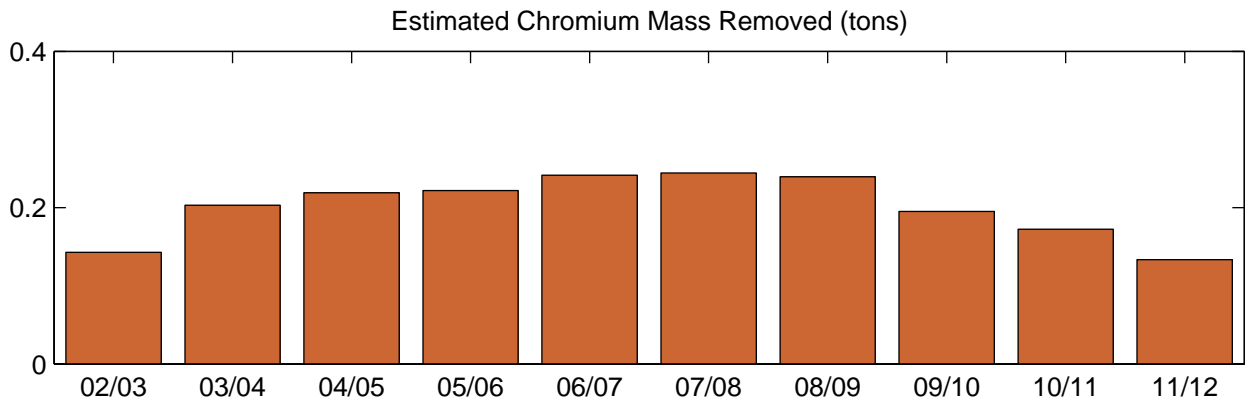
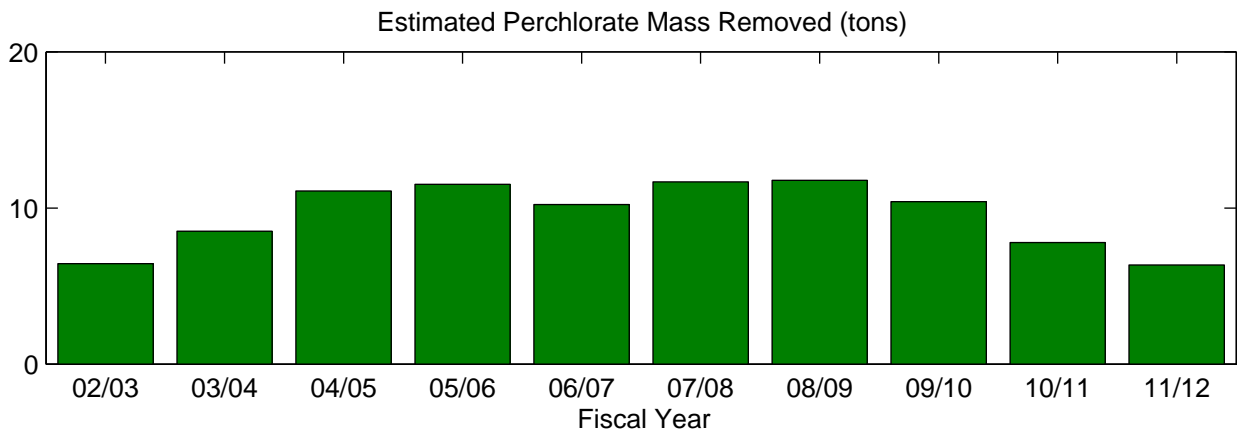
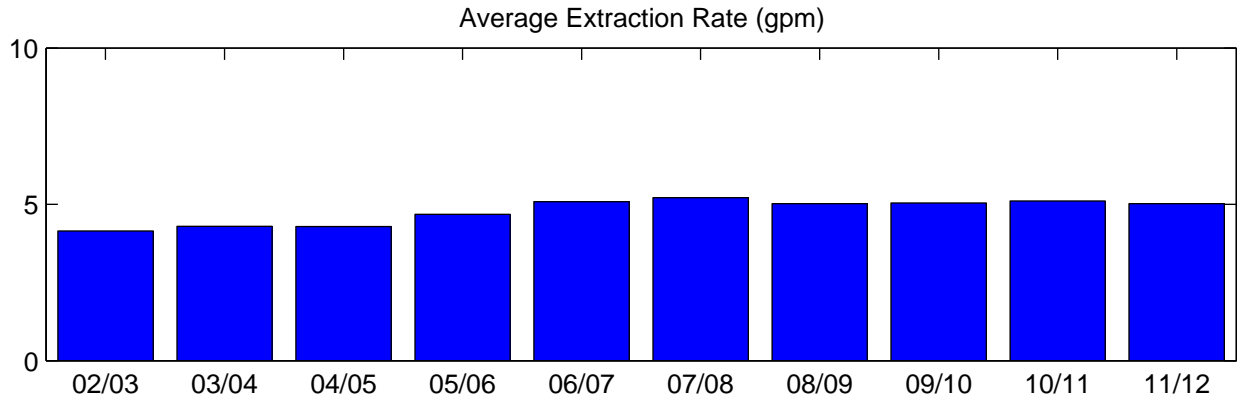
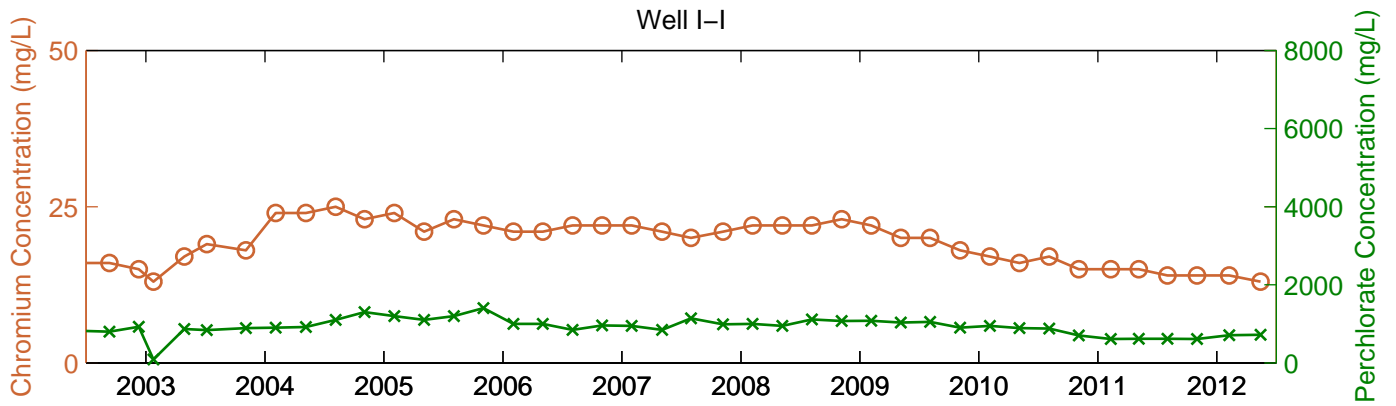
* Extraction rates for FY02/03 are the average of discharge rates reported for December 2002 and June 2003.



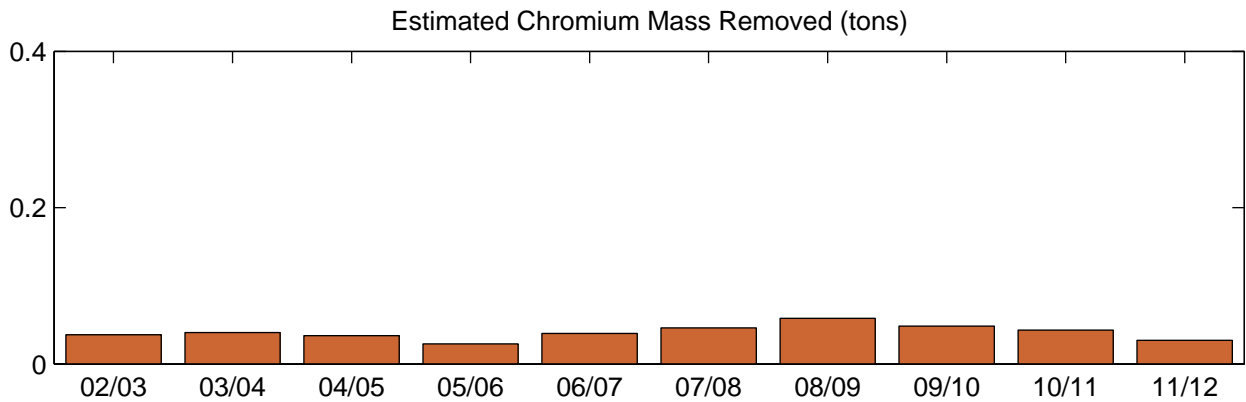
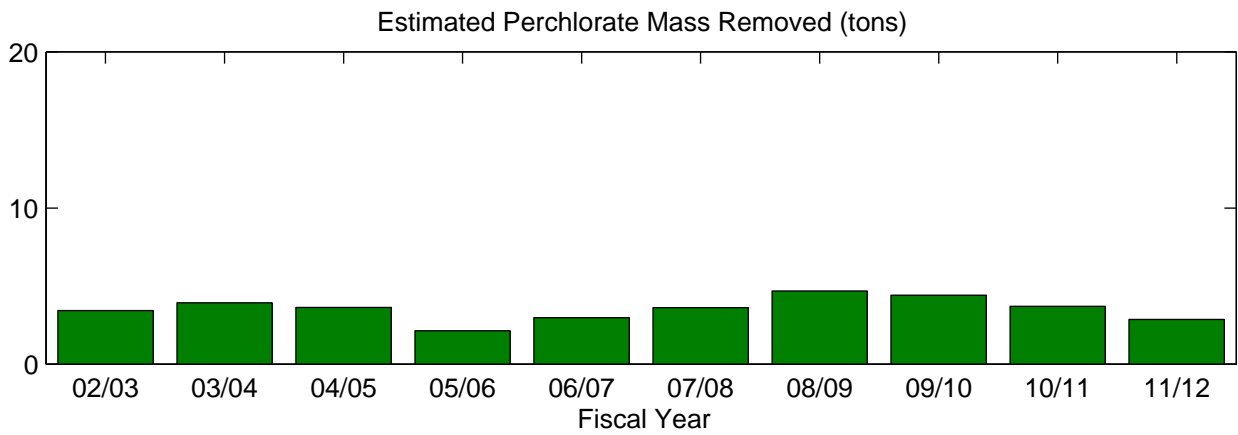
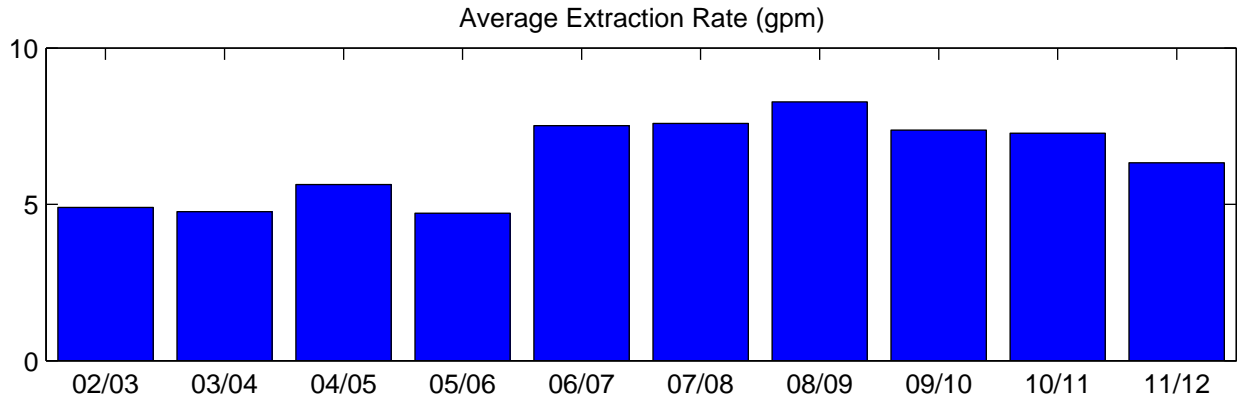
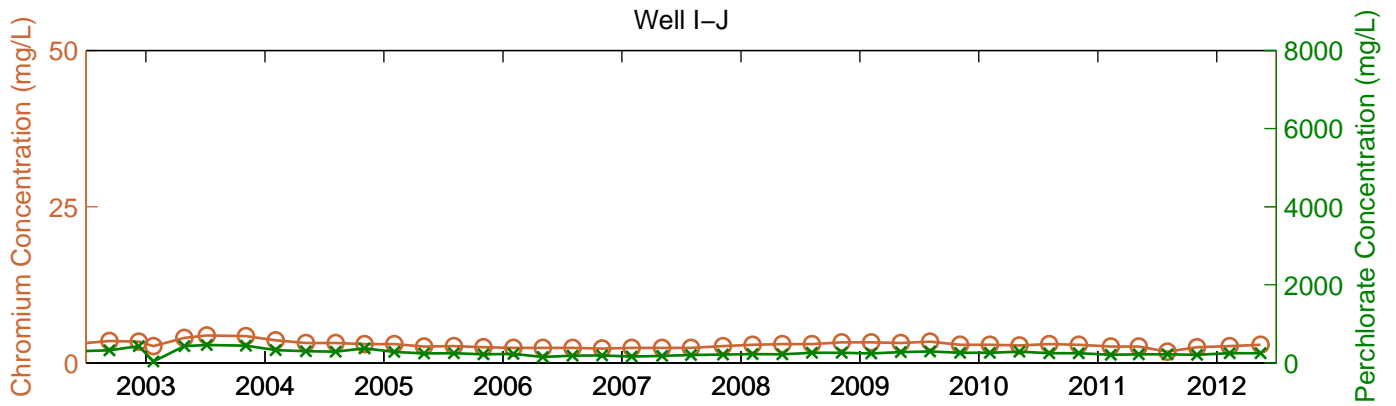
* Extraction rates for FY02/03 are the average of discharge rates reported for December 2002 and June 2003.



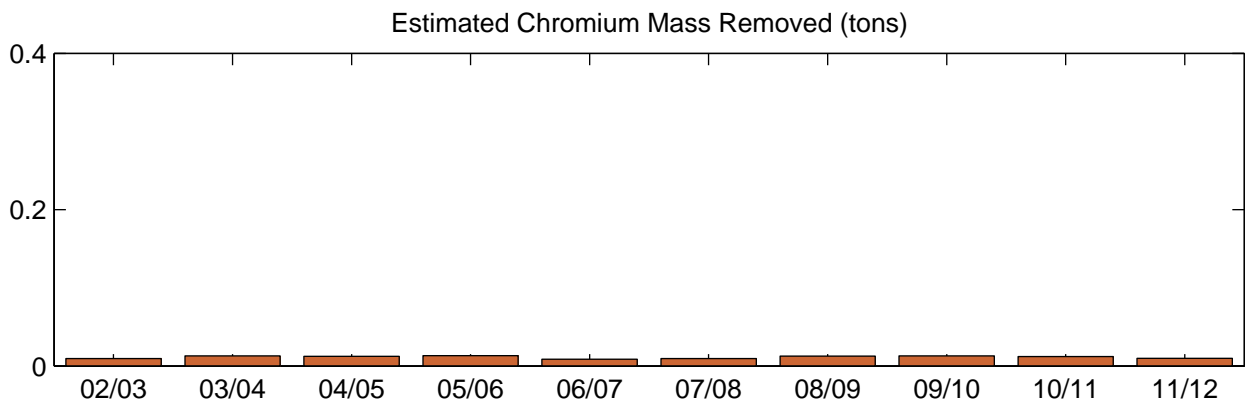
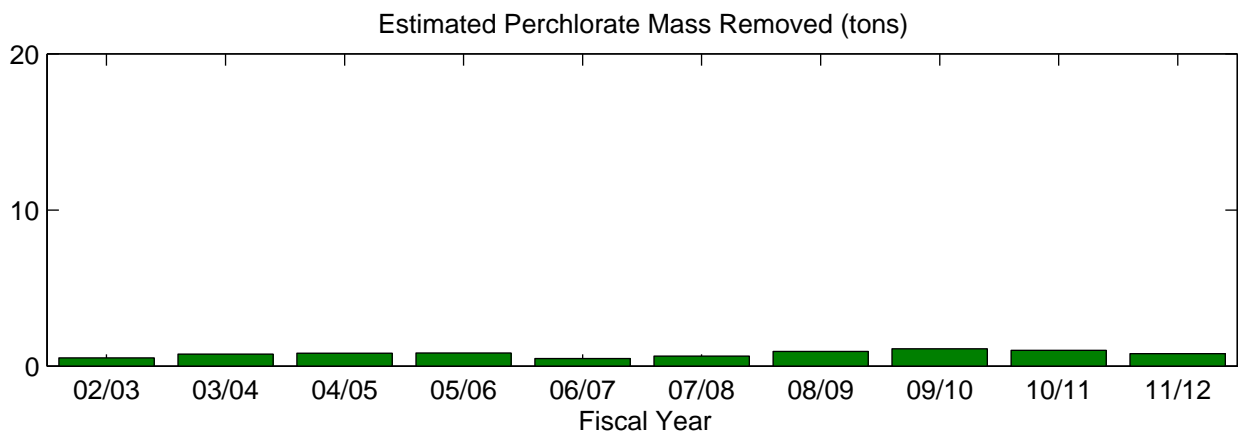
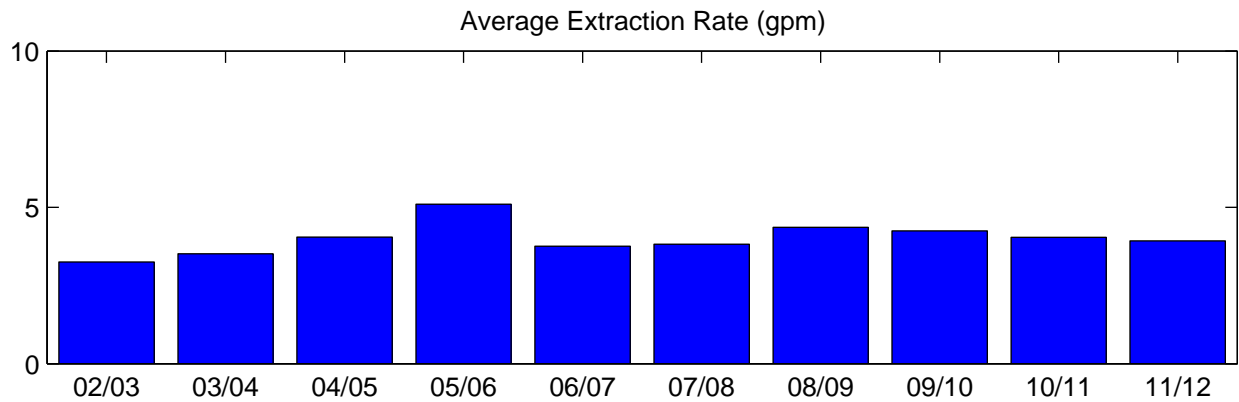
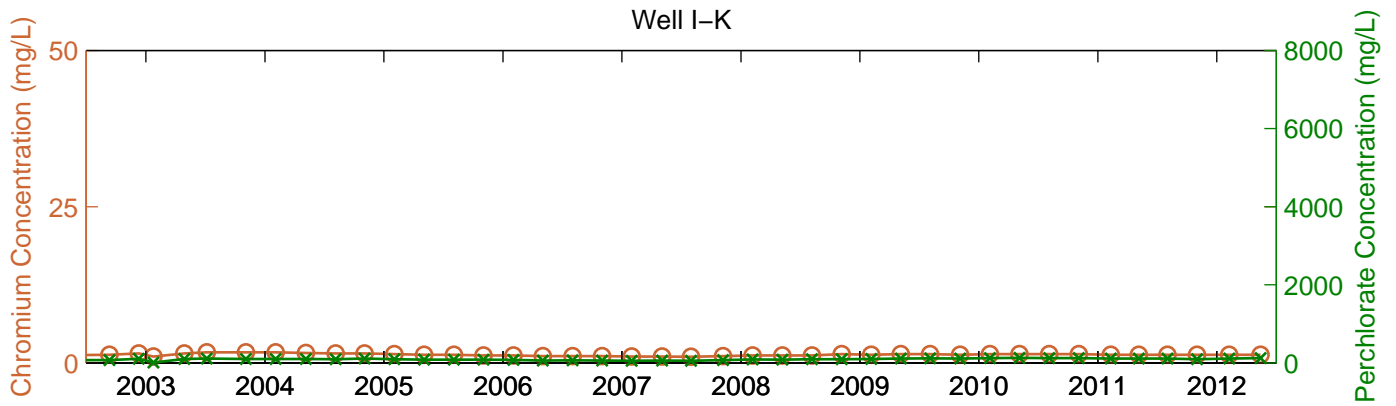
* Extraction rates for FY02/03 are the average of discharge rates reported for December 2002 and June 2003.



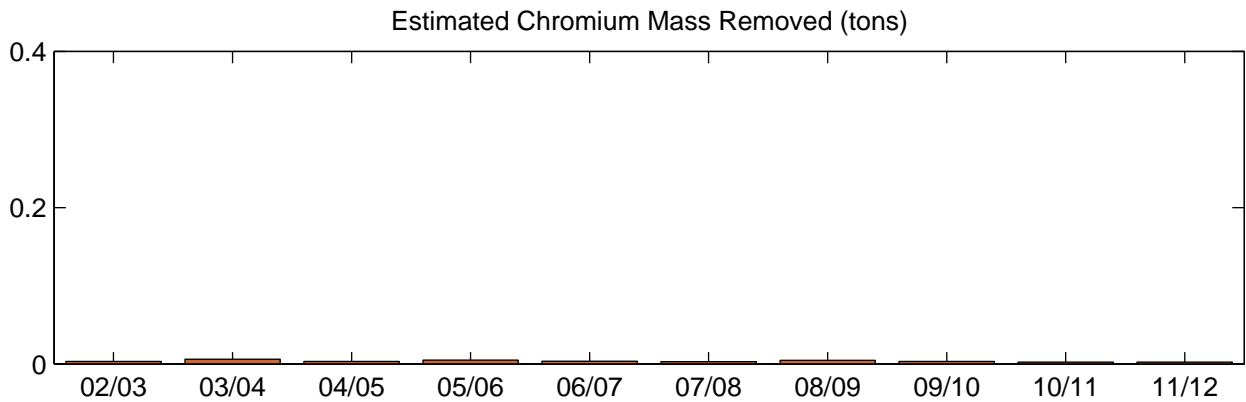
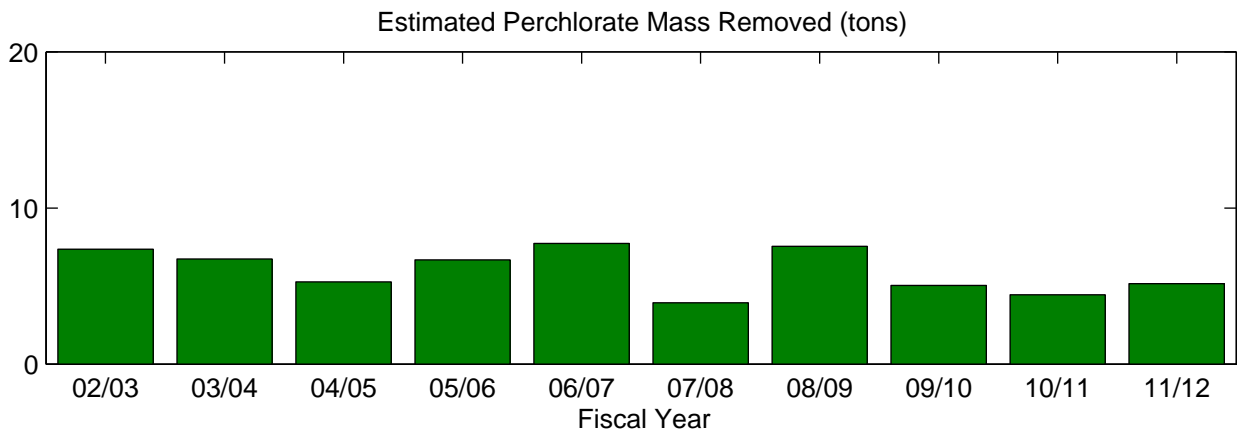
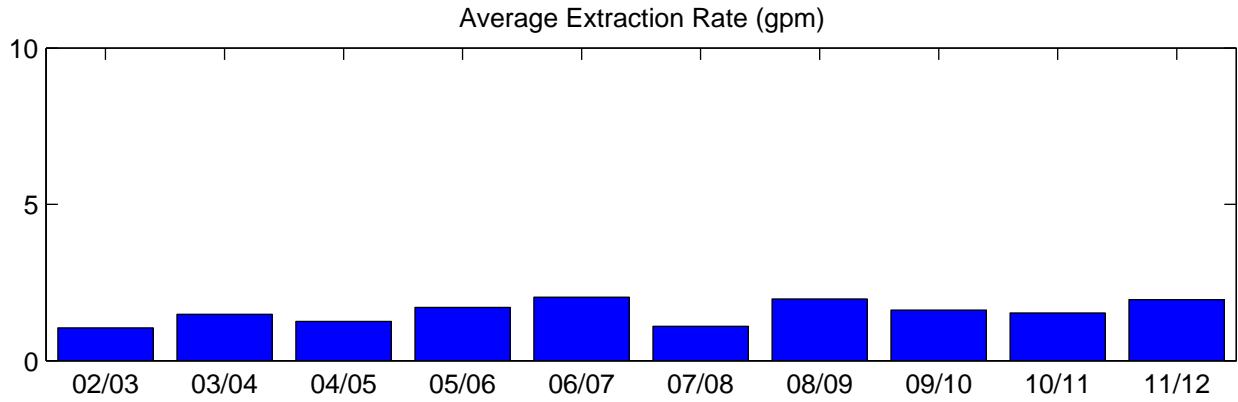
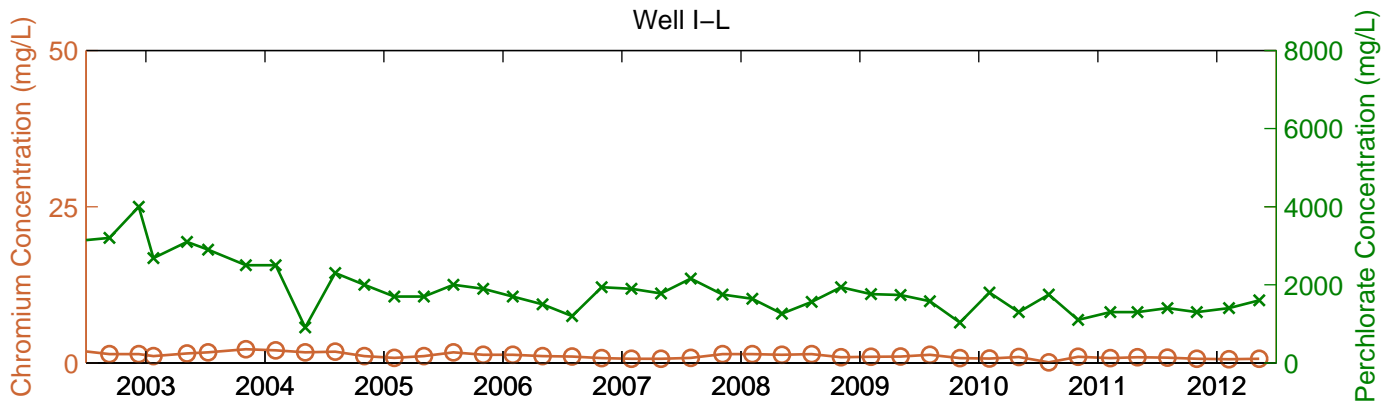
* Extraction rates for FY02/03 are the average of discharge rates reported for December 2002 and June 2003.



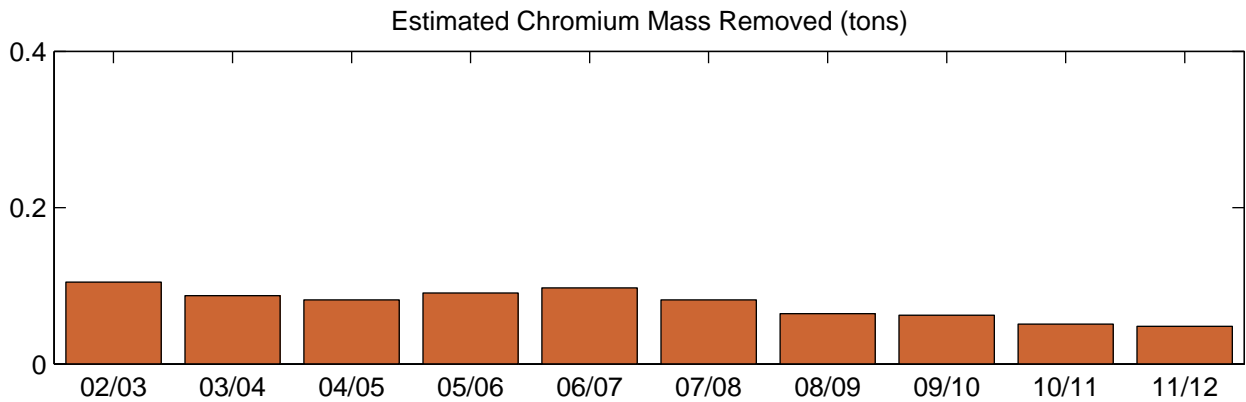
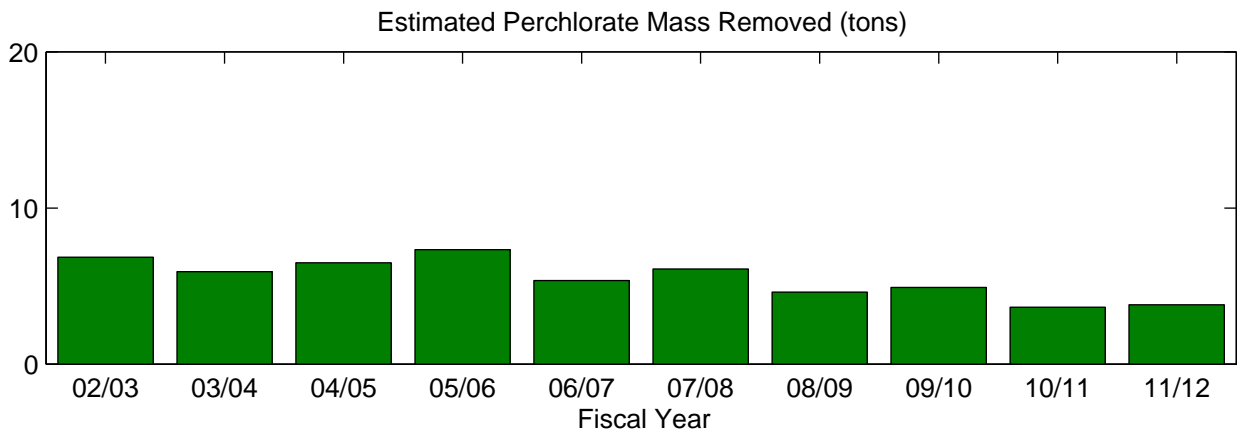
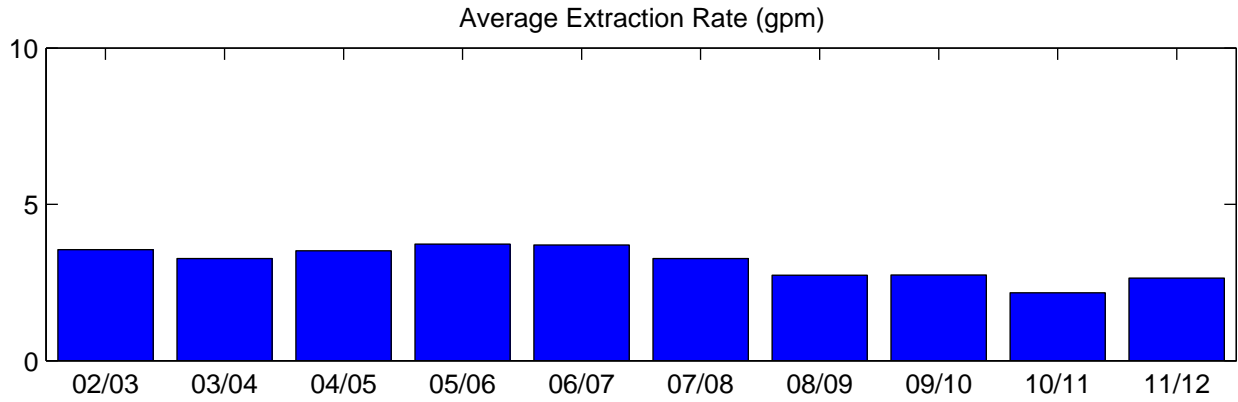
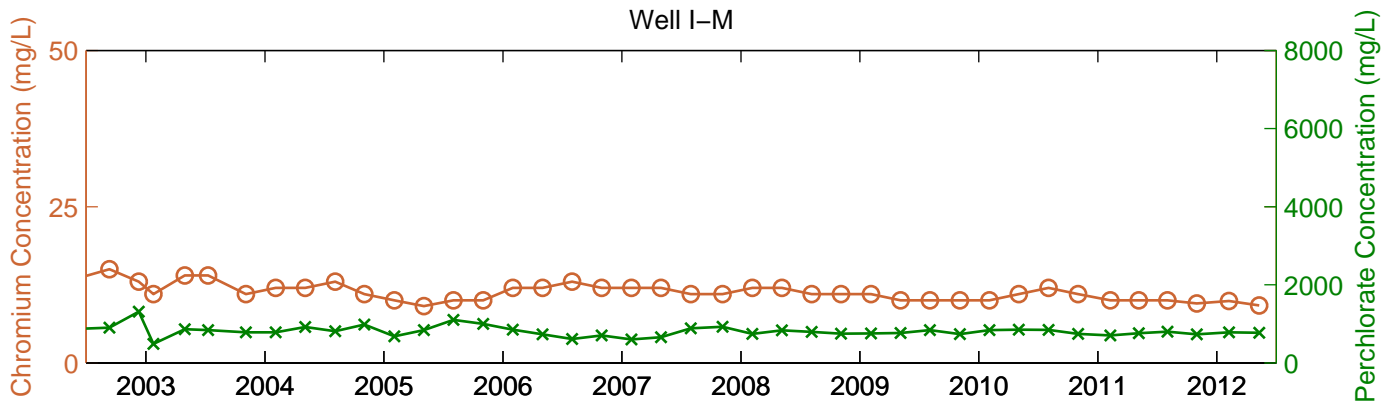
* Extraction rates for FY02/03 are the average of discharge rates reported for December 2002 and June 2003.



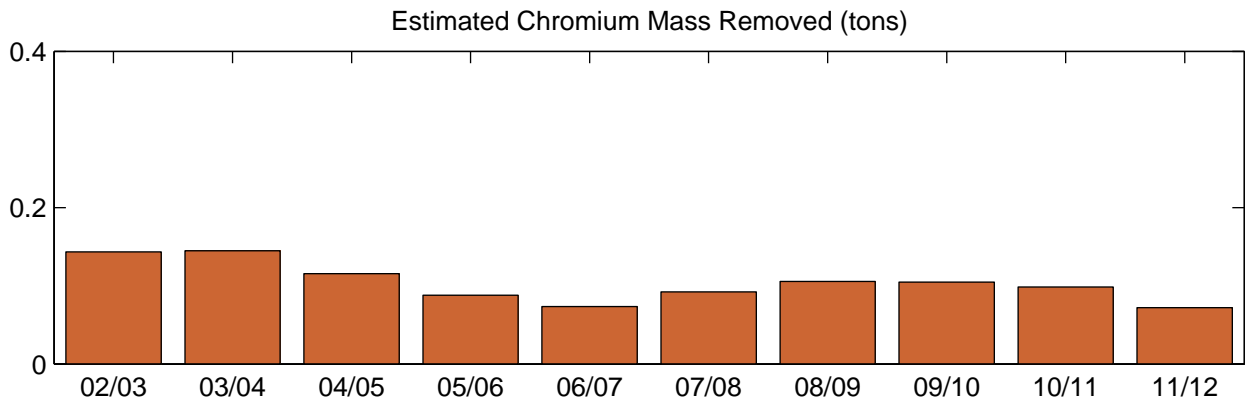
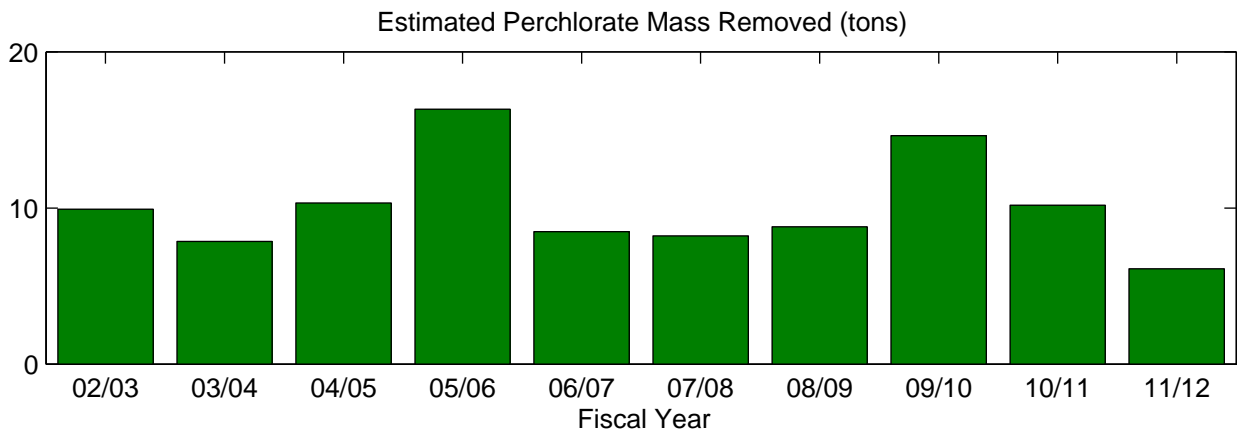
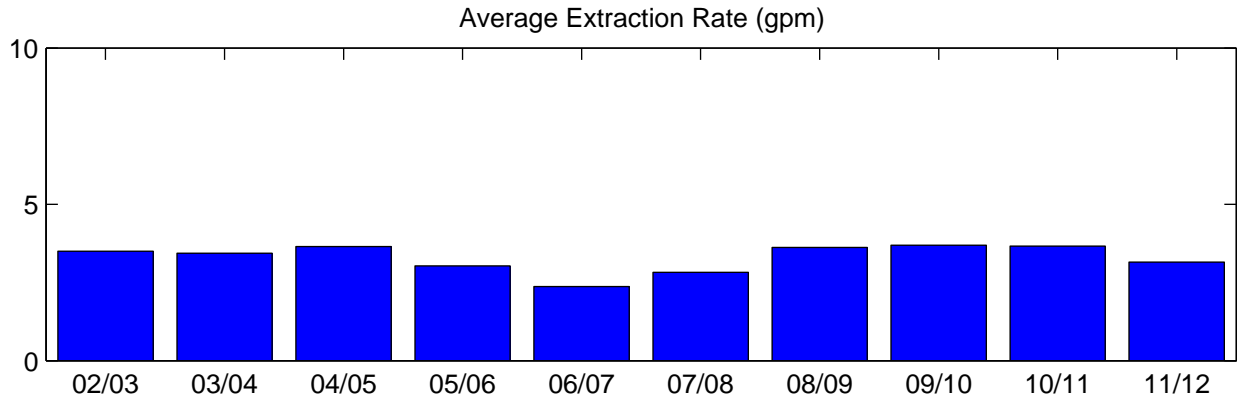
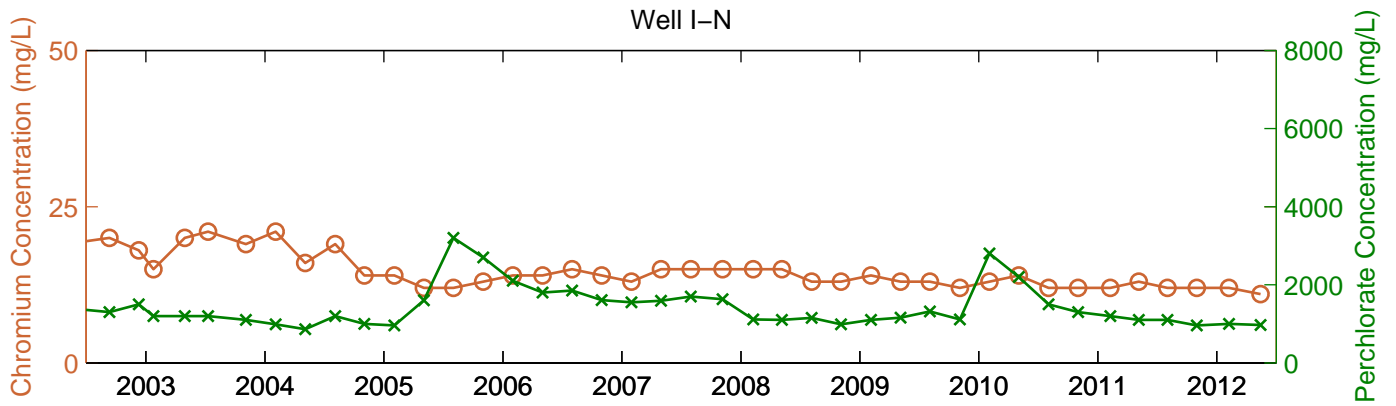
* Extraction rates for FY02/03 are the average of discharge rates reported for December 2002 and June 2003.



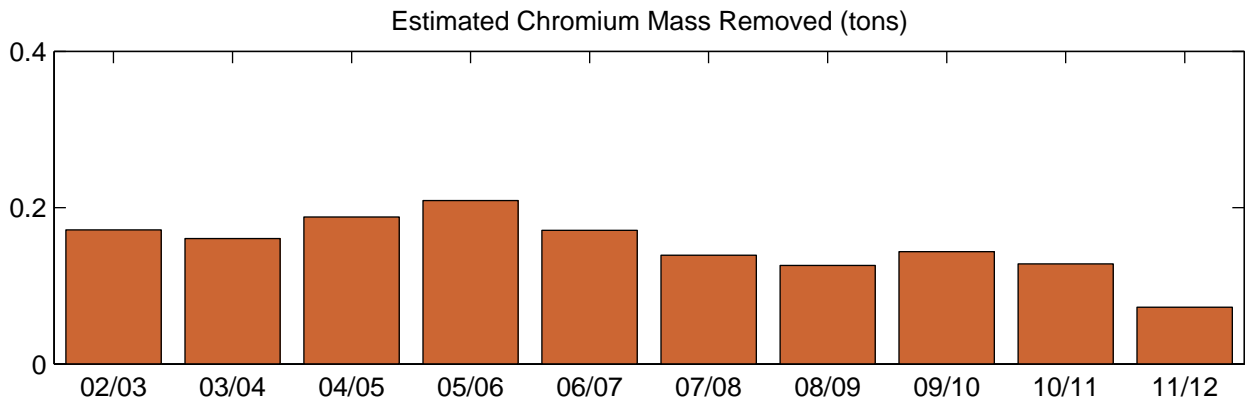
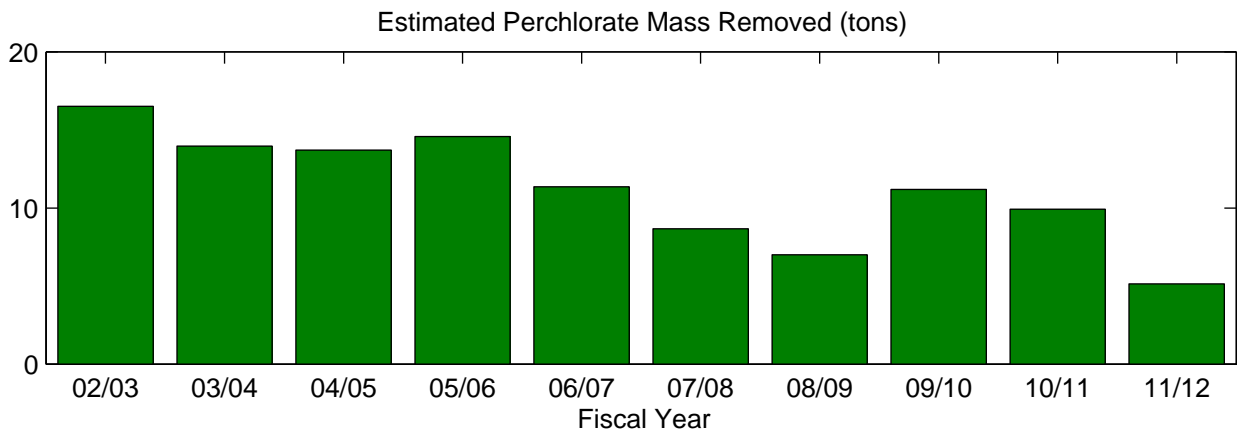
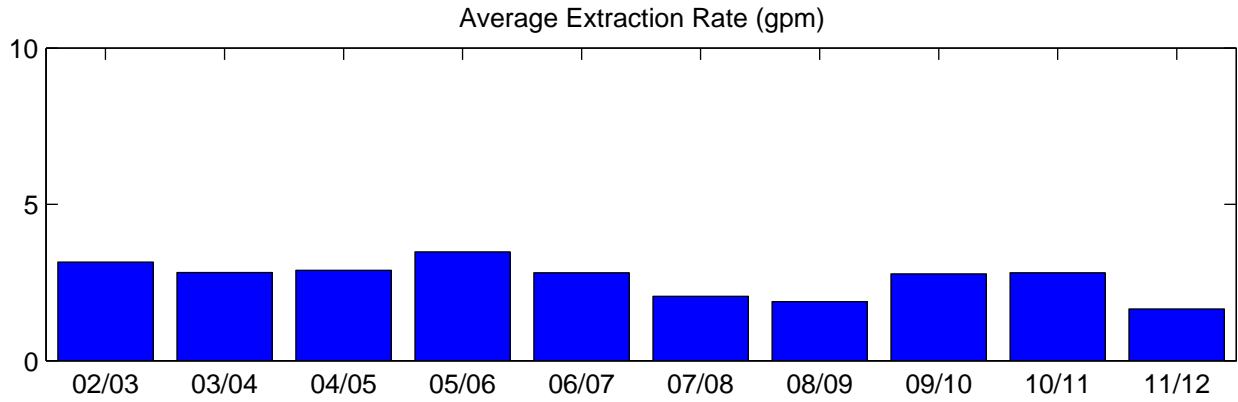
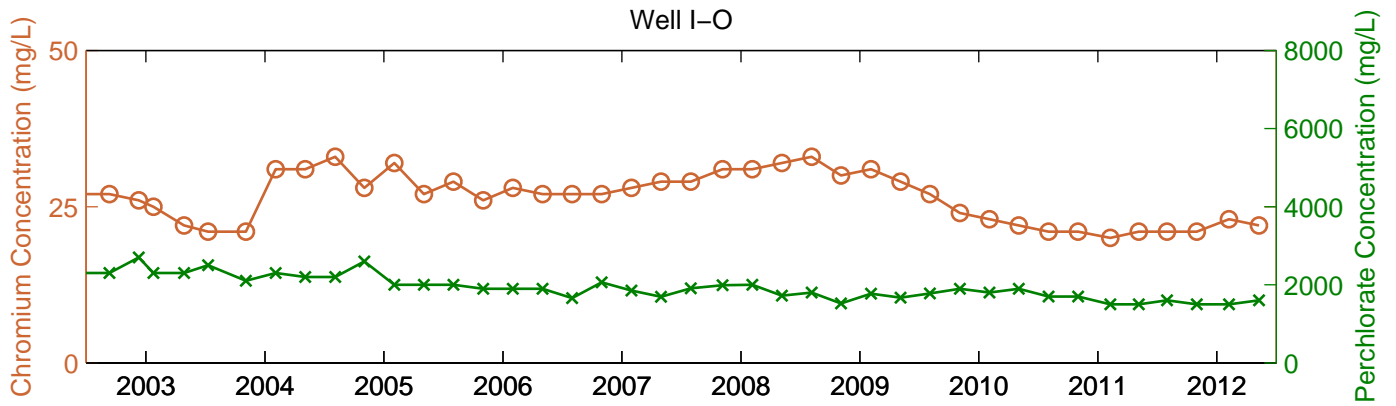
* Extraction rates for FY02/03 are the average of discharge rates reported for December 2002 and June 2003.



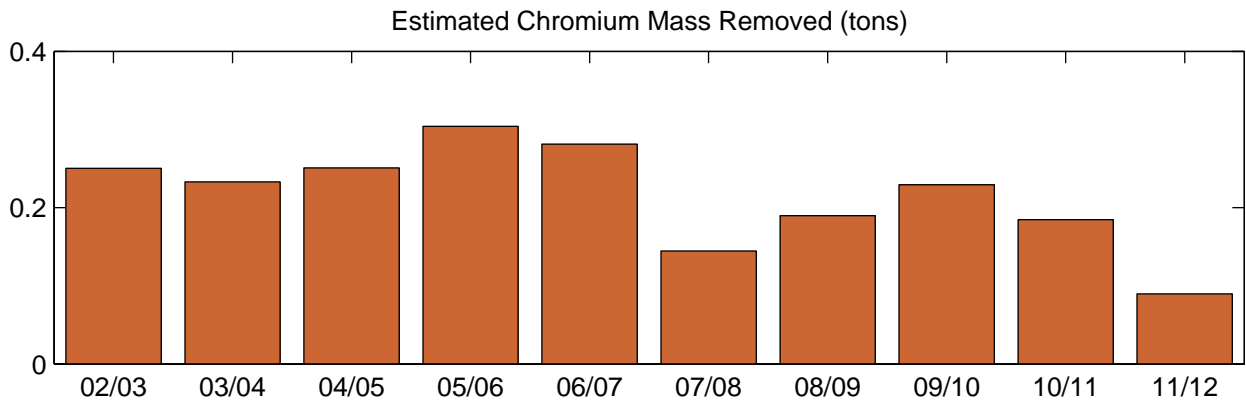
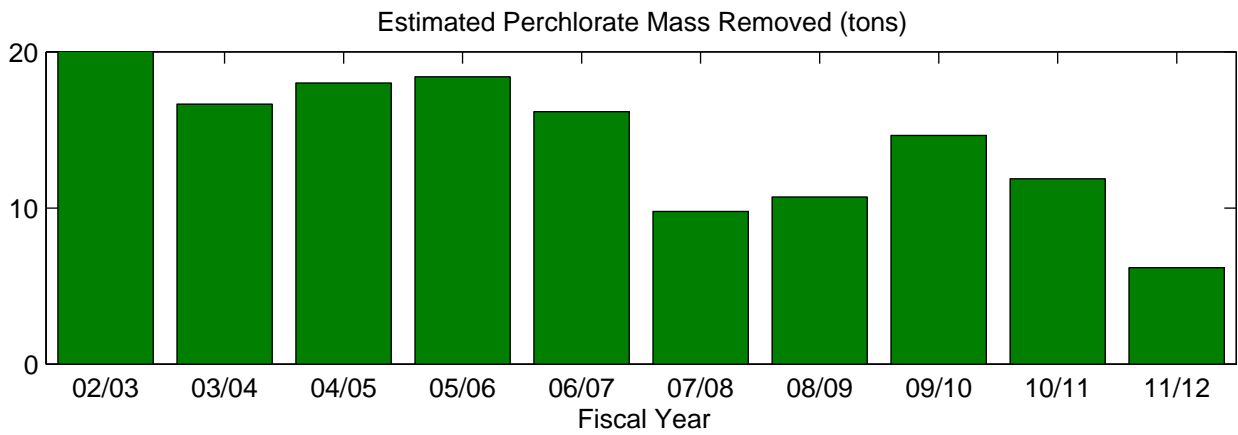
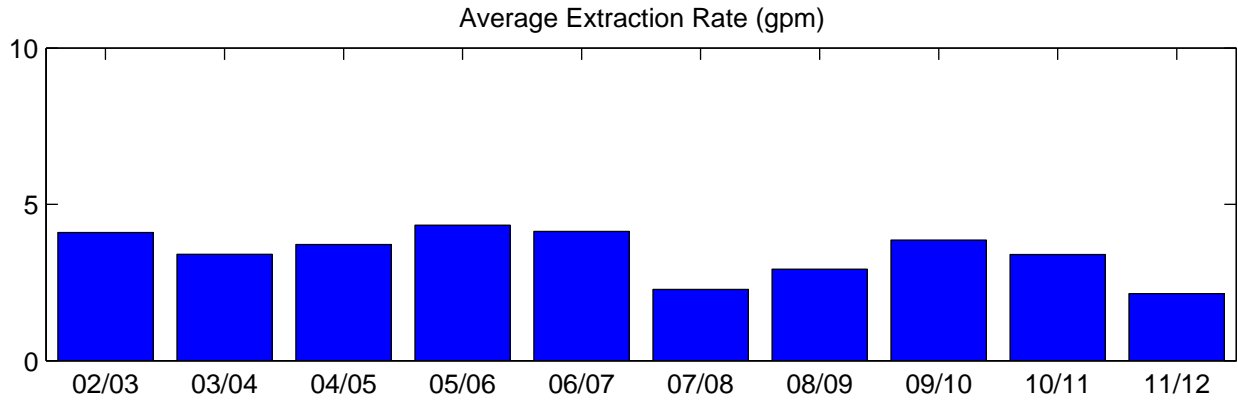
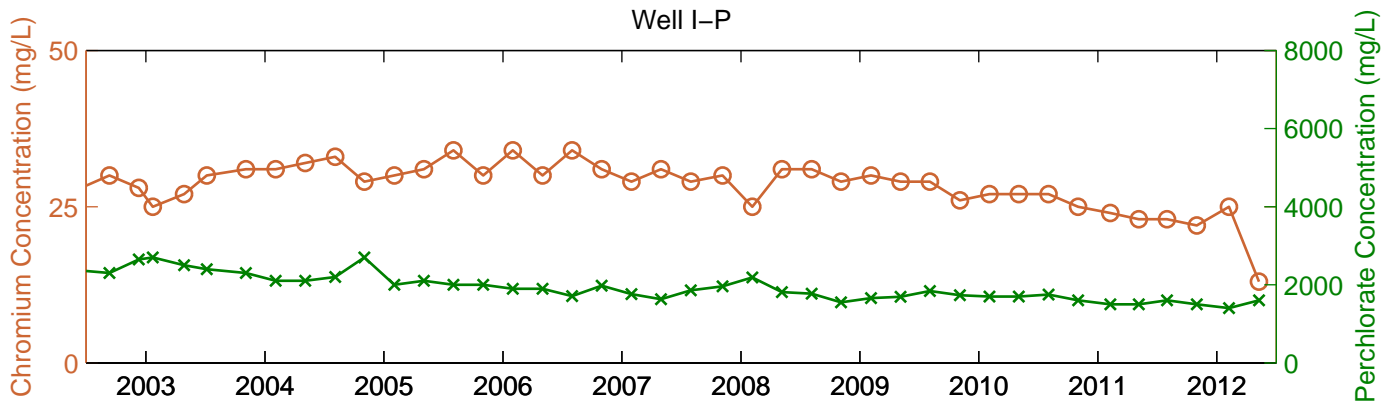
* Extraction rates for FY02/03 are the average of discharge rates reported for December 2002 and June 2003.



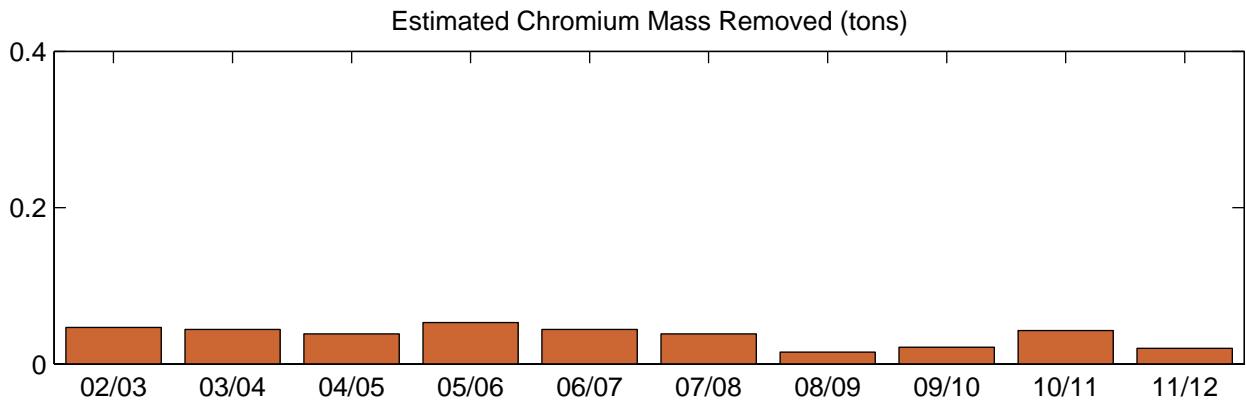
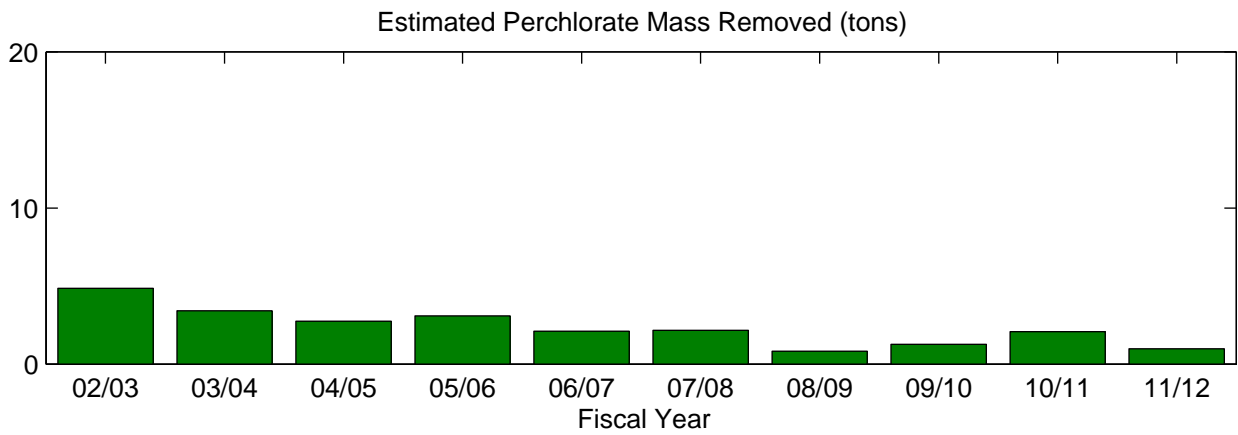
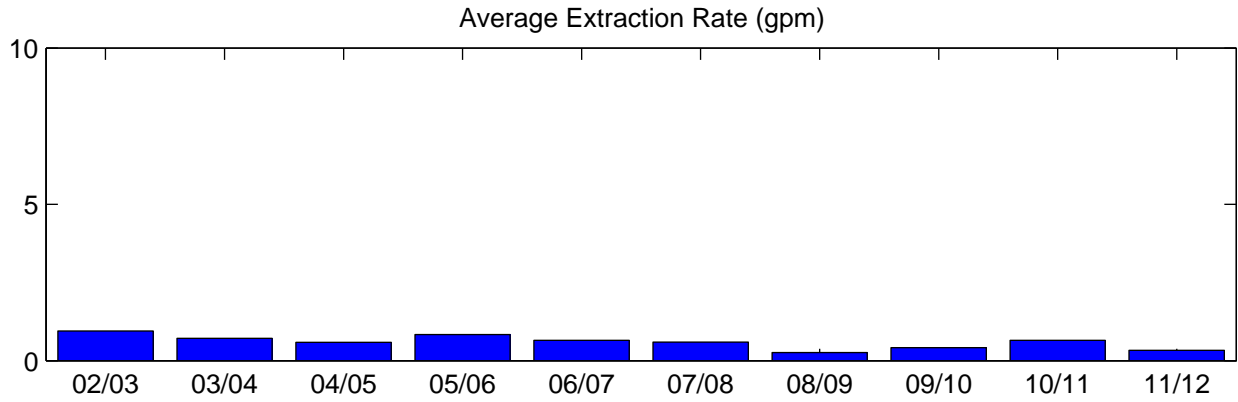
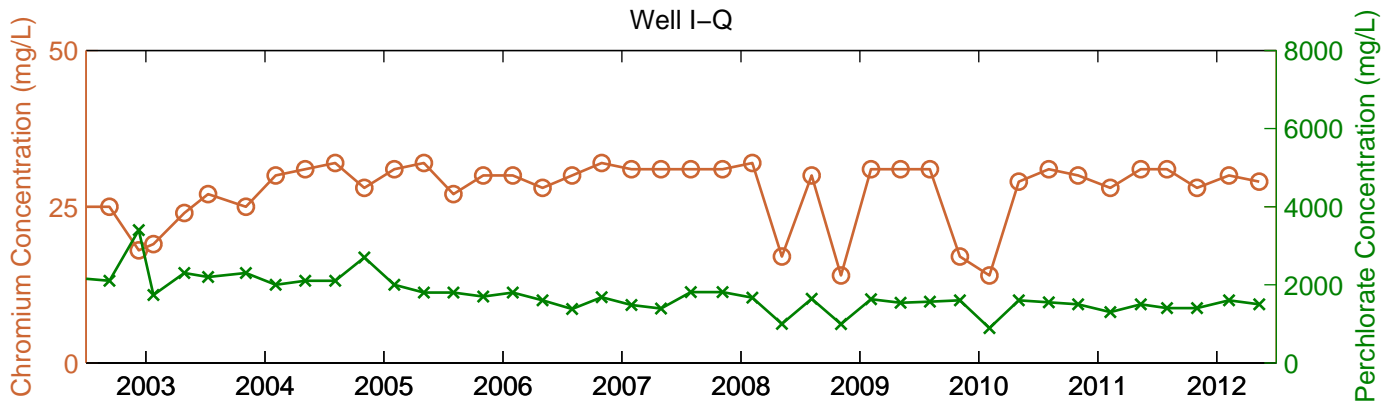
* Extraction rates for FY02/03 are the average of discharge rates reported for December 2002 and June 2003.



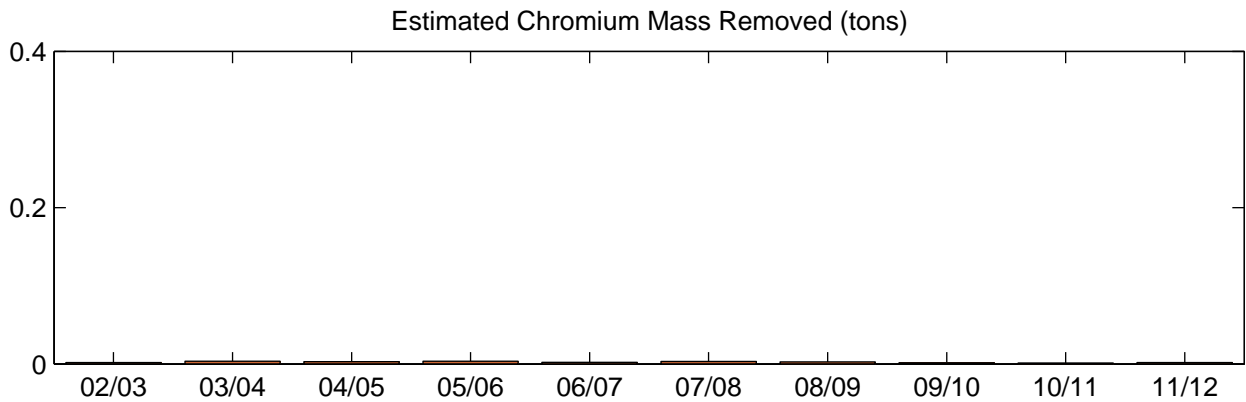
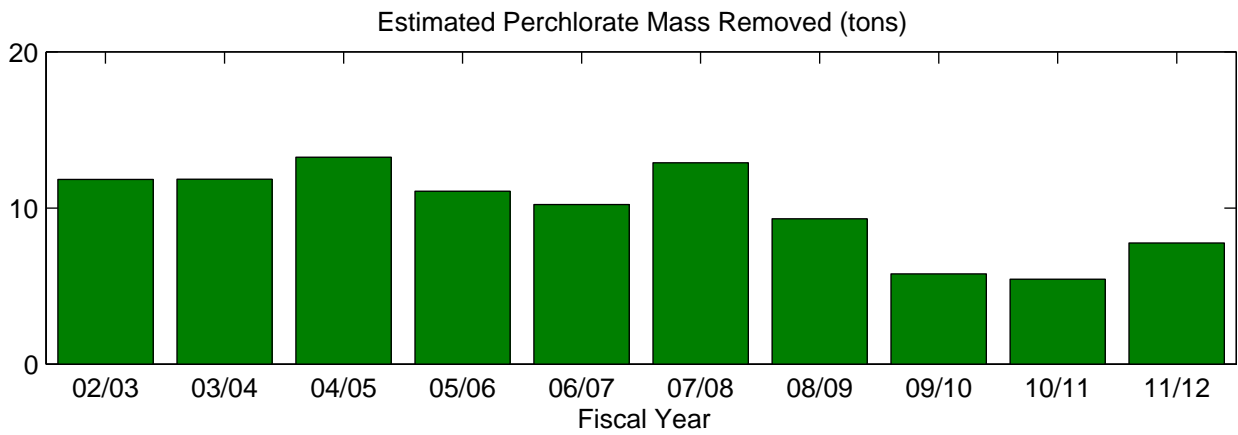
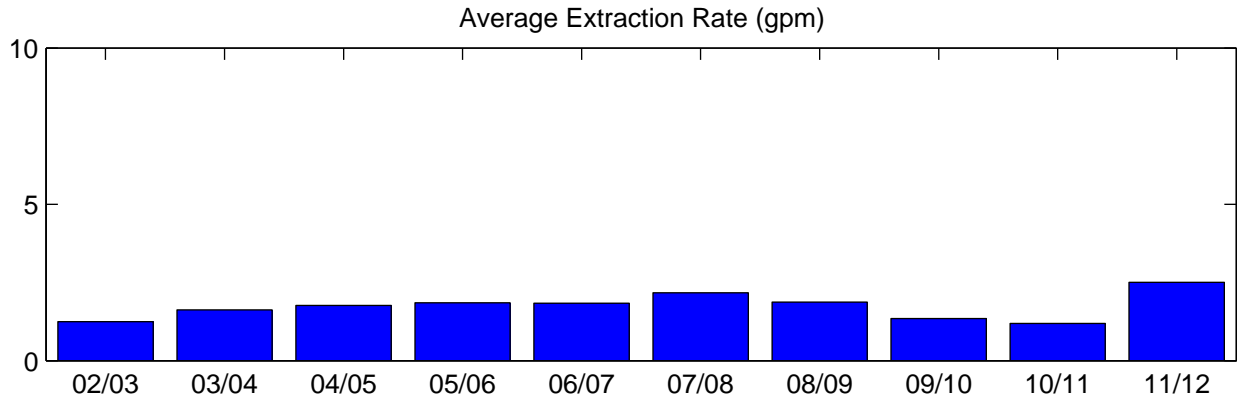
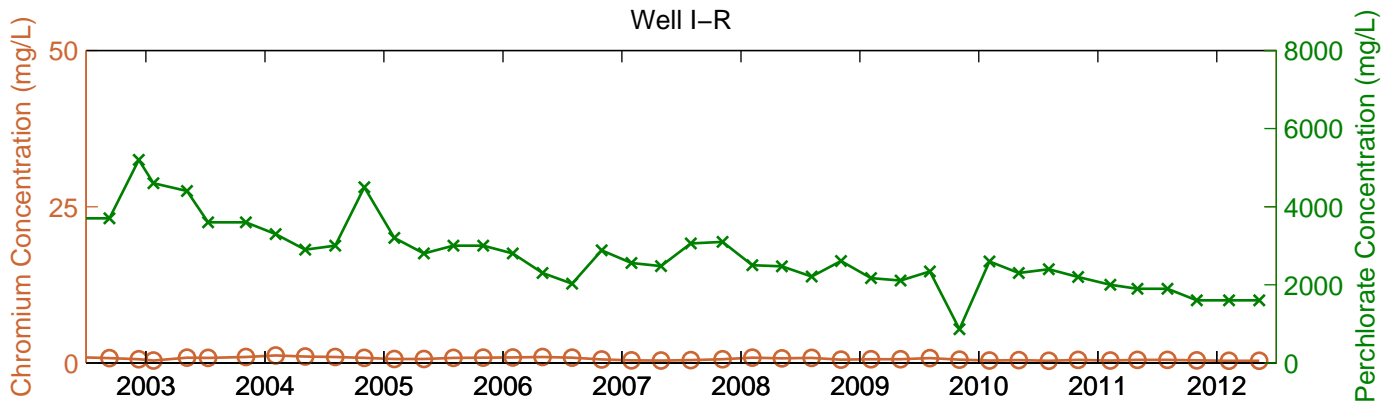
* Extraction rates for FY02/03 are the average of discharge rates reported for December 2002 and June 2003.



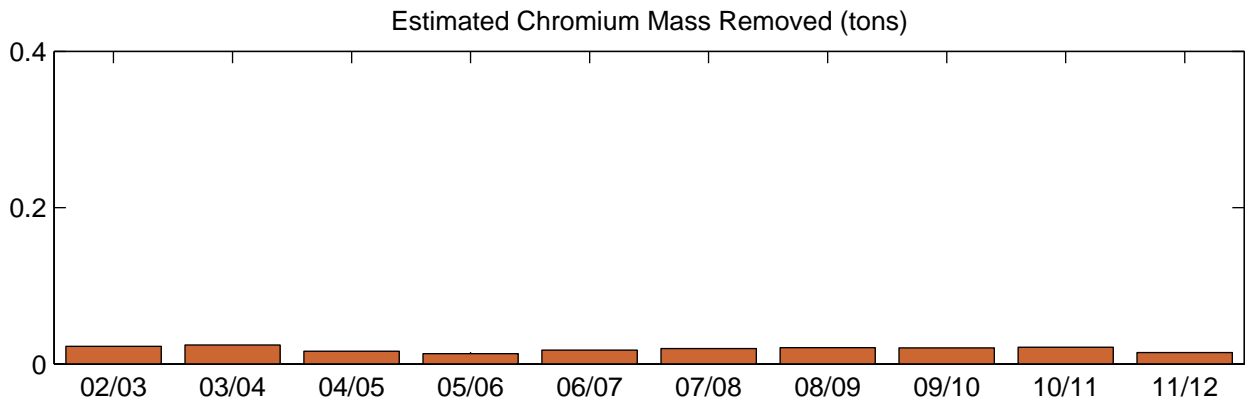
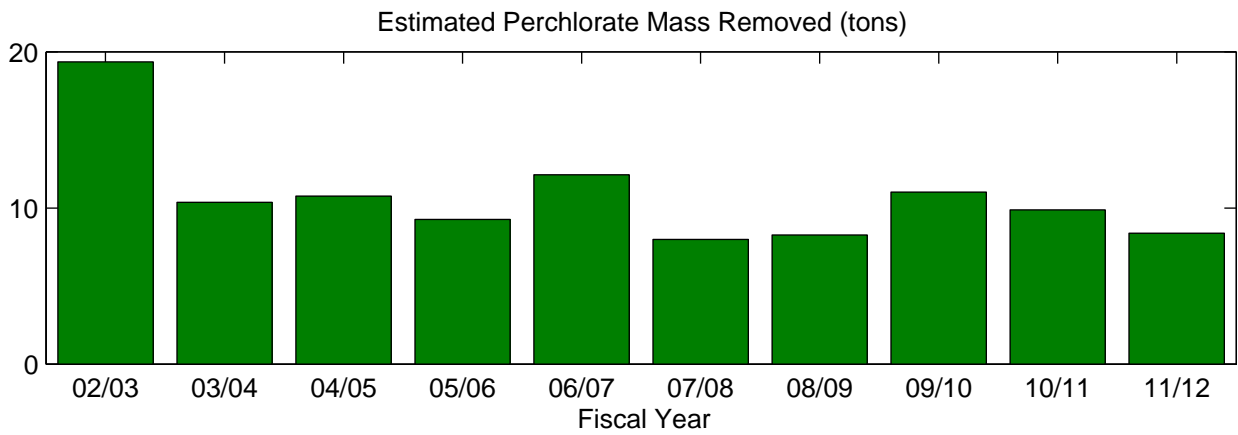
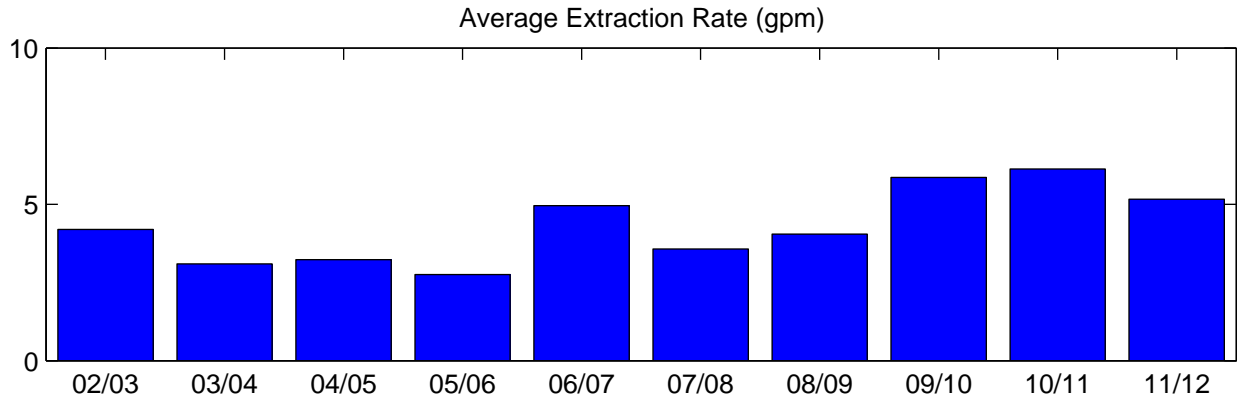
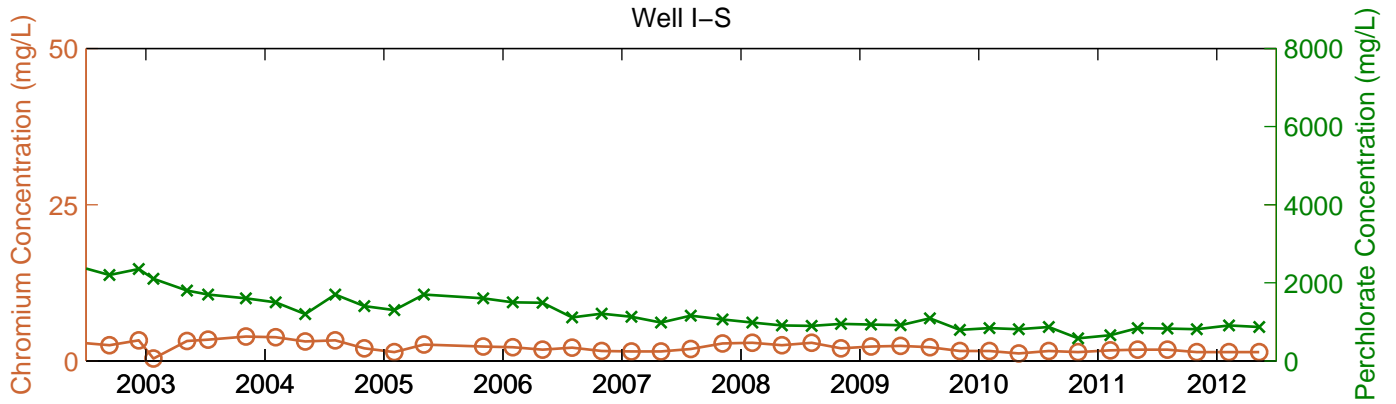
* Extraction rates for FY02/03 are the average of discharge rates reported for December 2002 and June 2003.



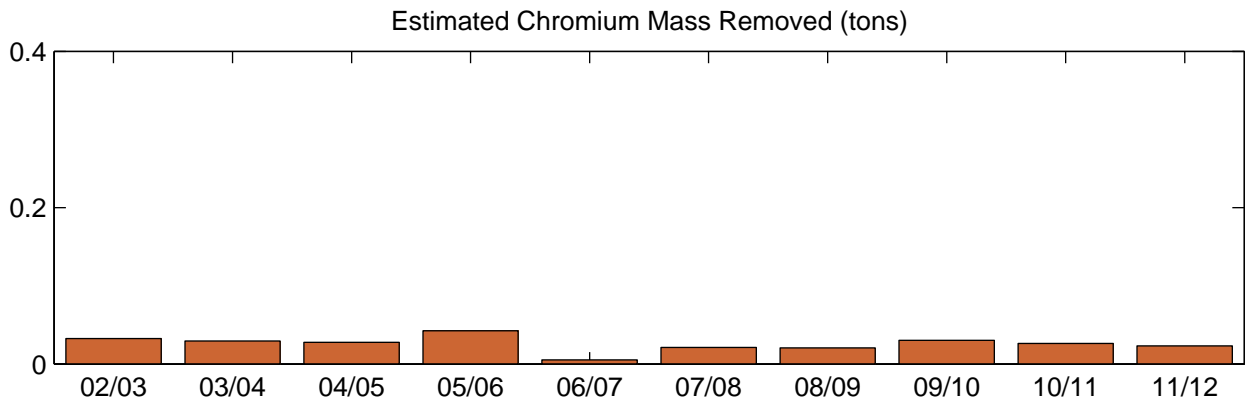
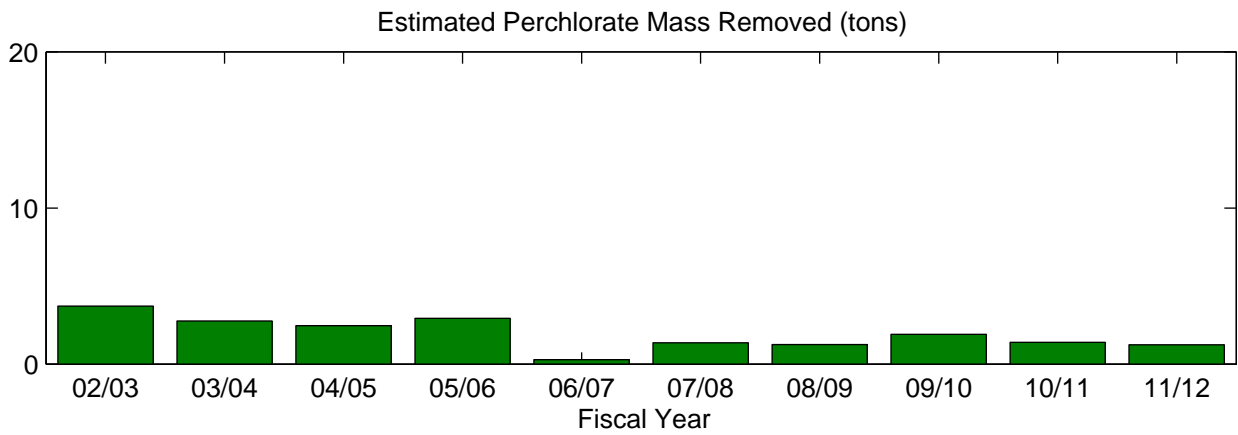
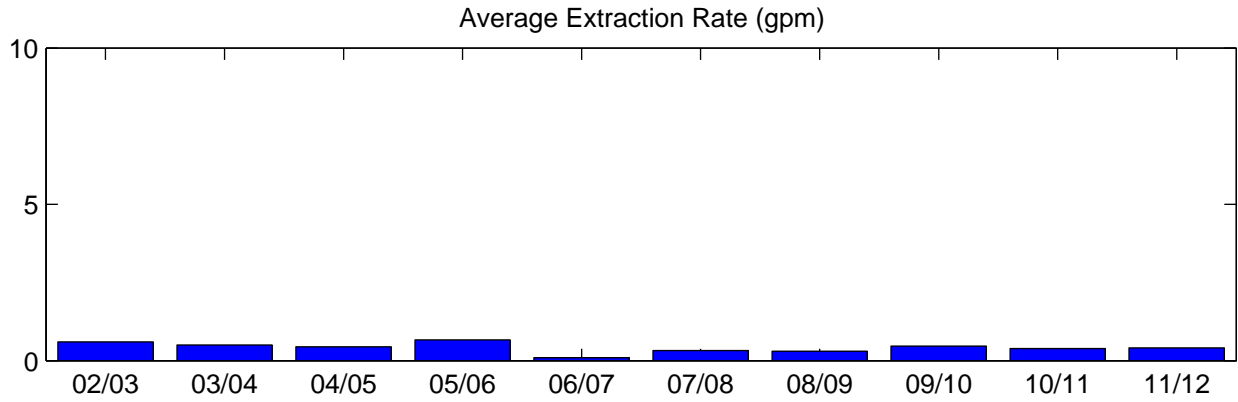
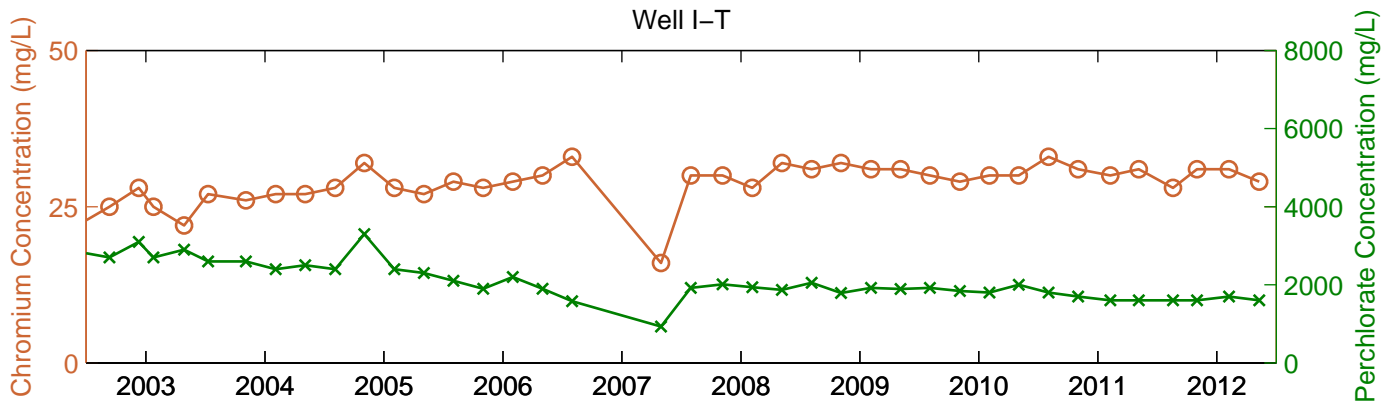
* Extraction rates for FY02/03 are the average of discharge rates reported for December 2002 and June 2003.



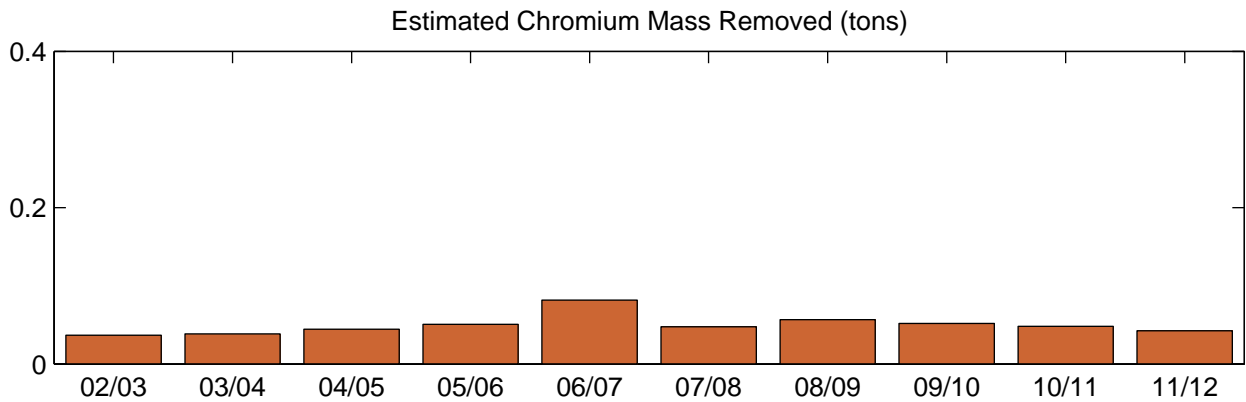
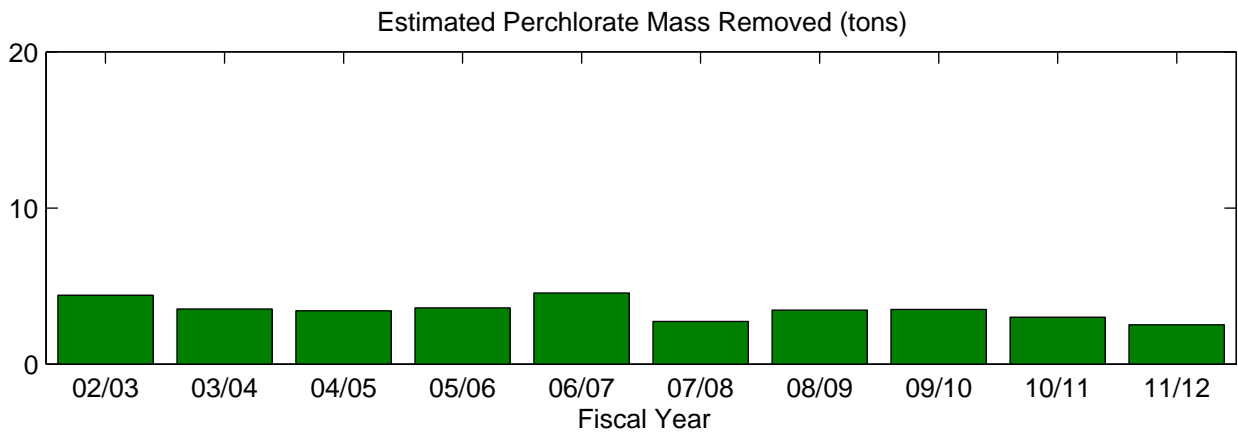
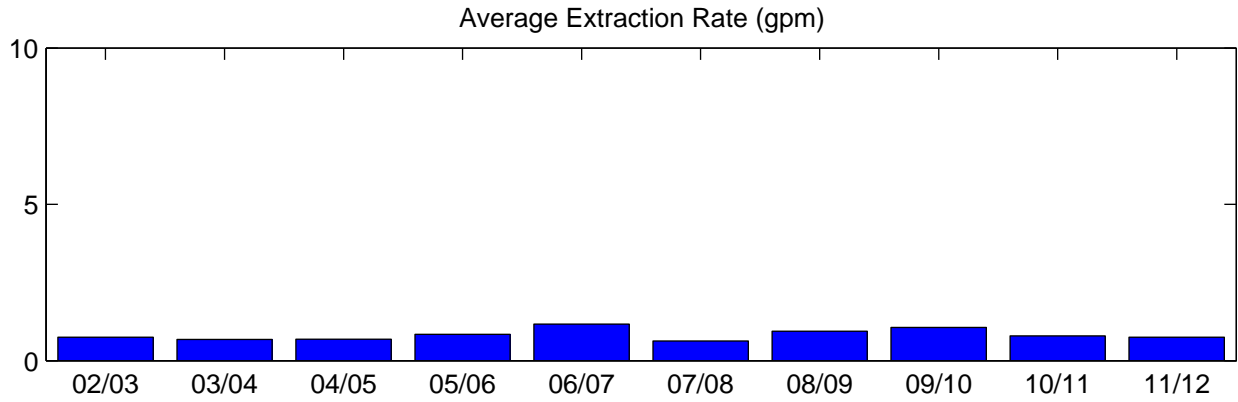
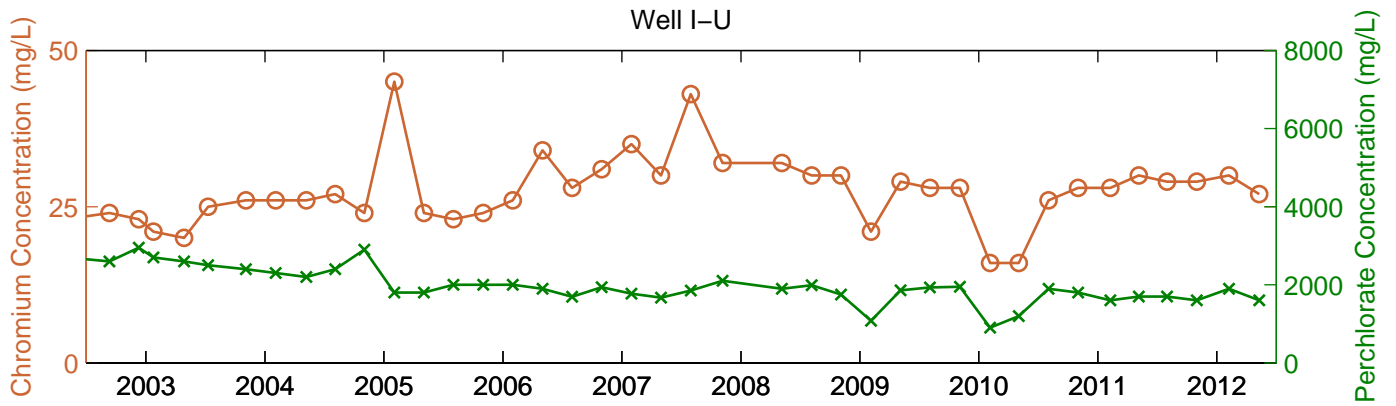
* Extraction rates for FY02/03 are the average of discharge rates reported for December 2002 and June 2003.



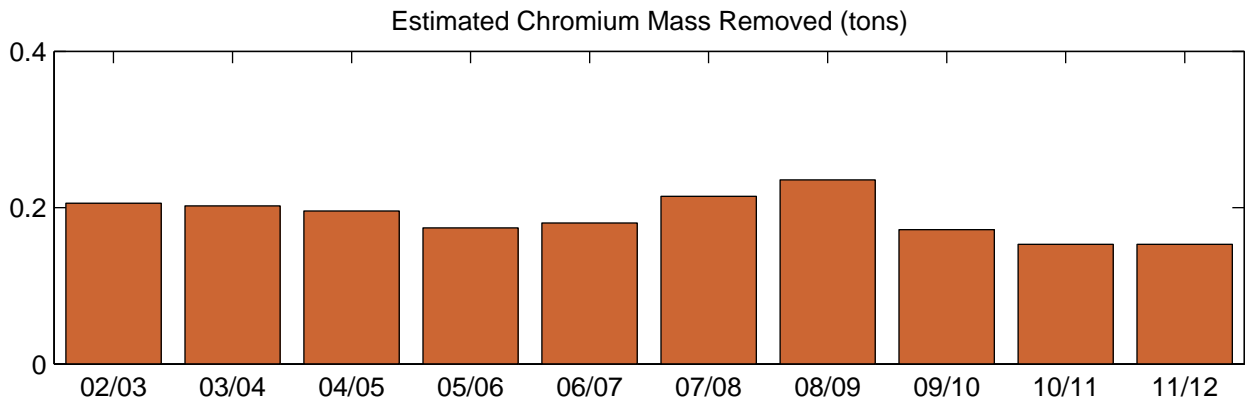
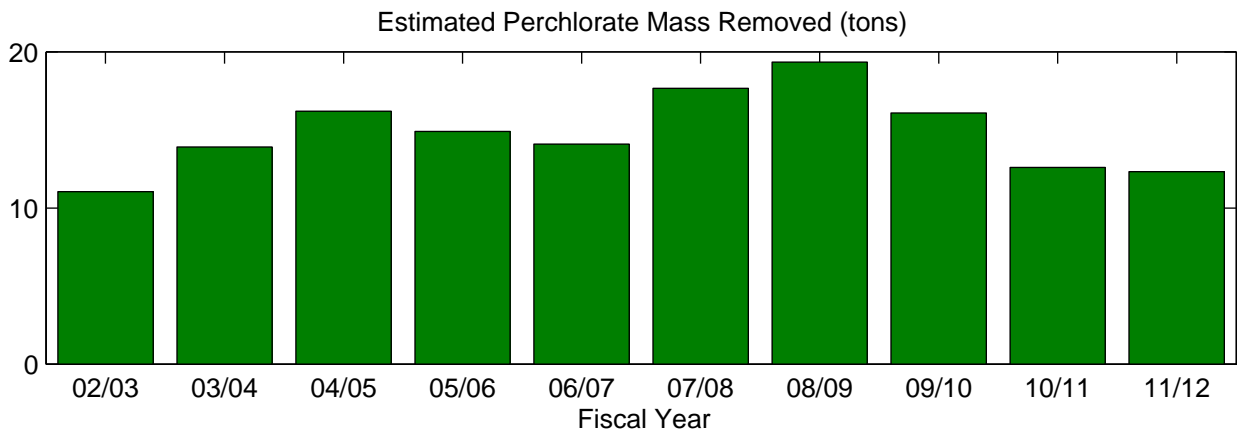
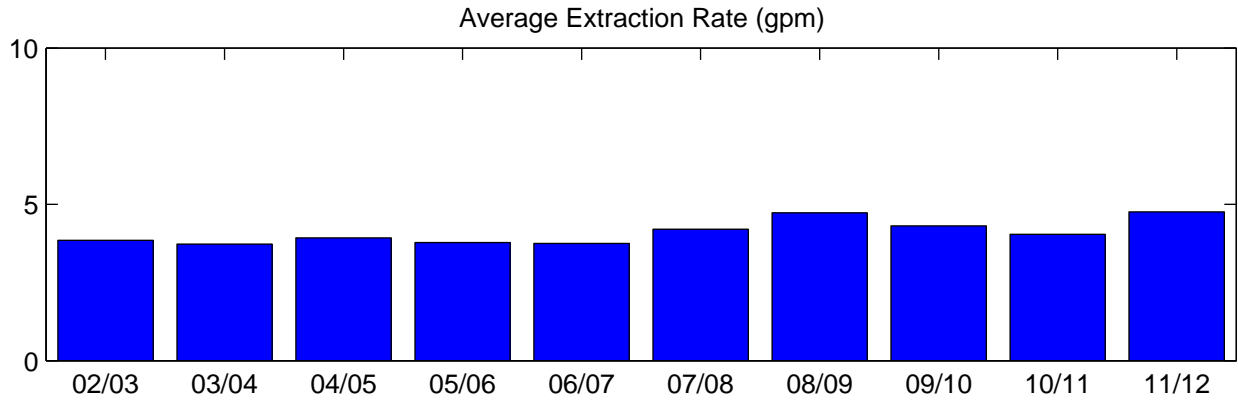
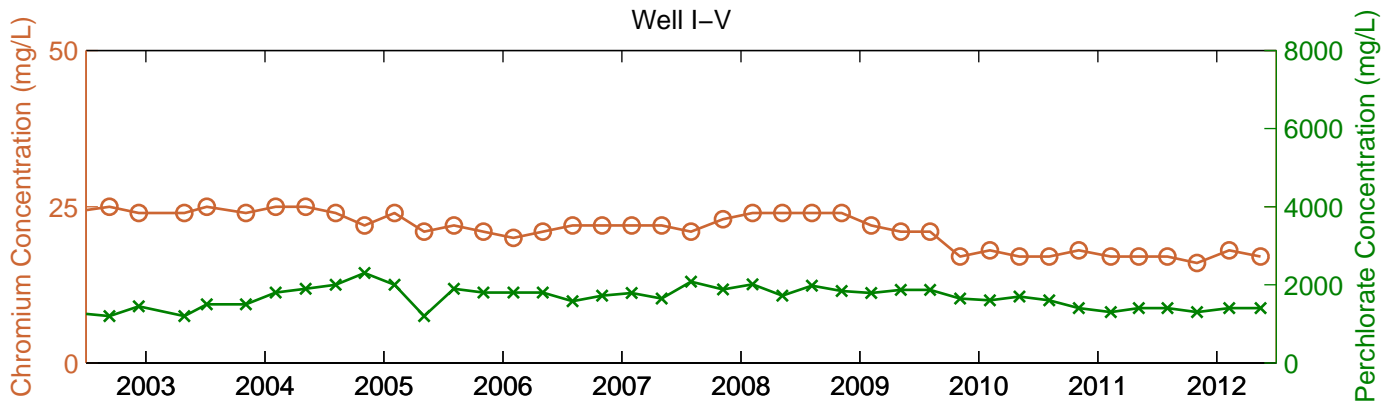
* Extraction rates for FY02/03 are the average of discharge rates reported for December 2002 and June 2003.



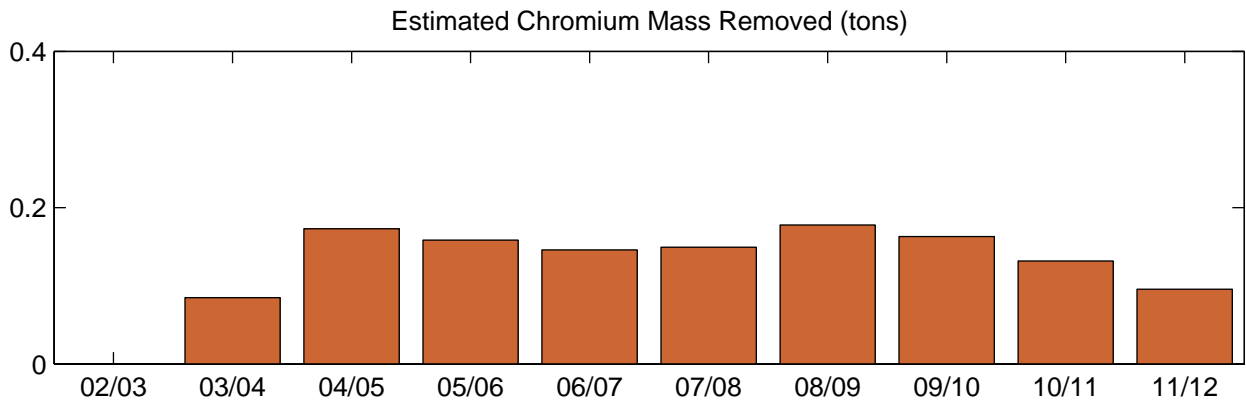
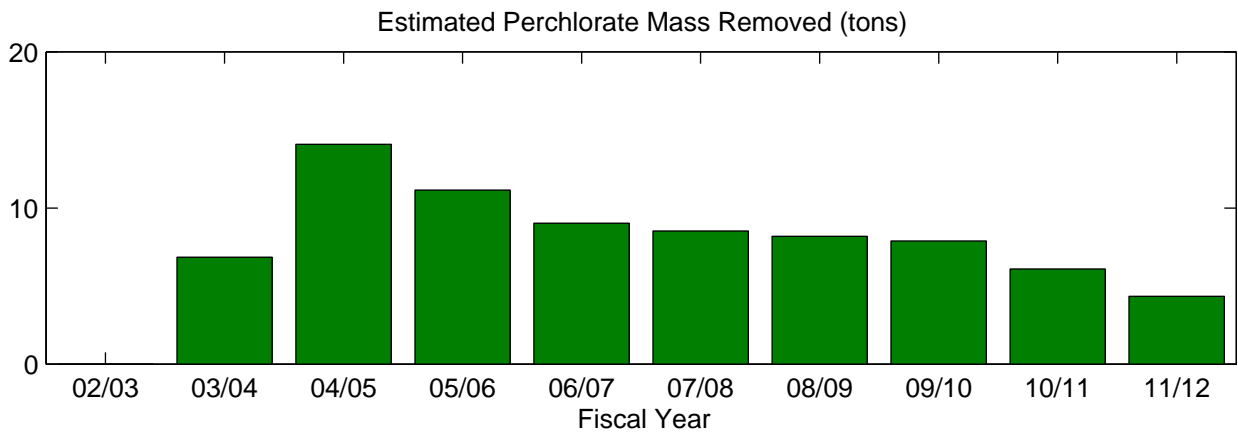
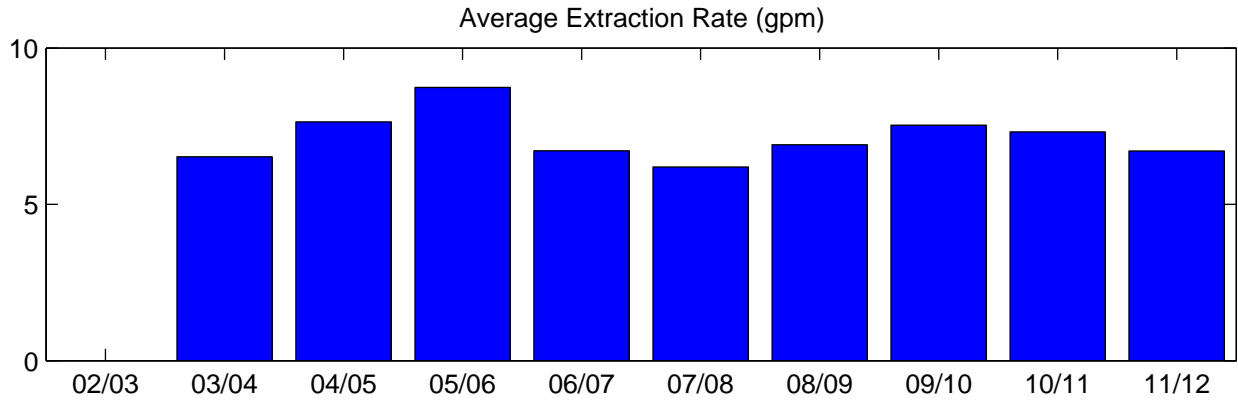
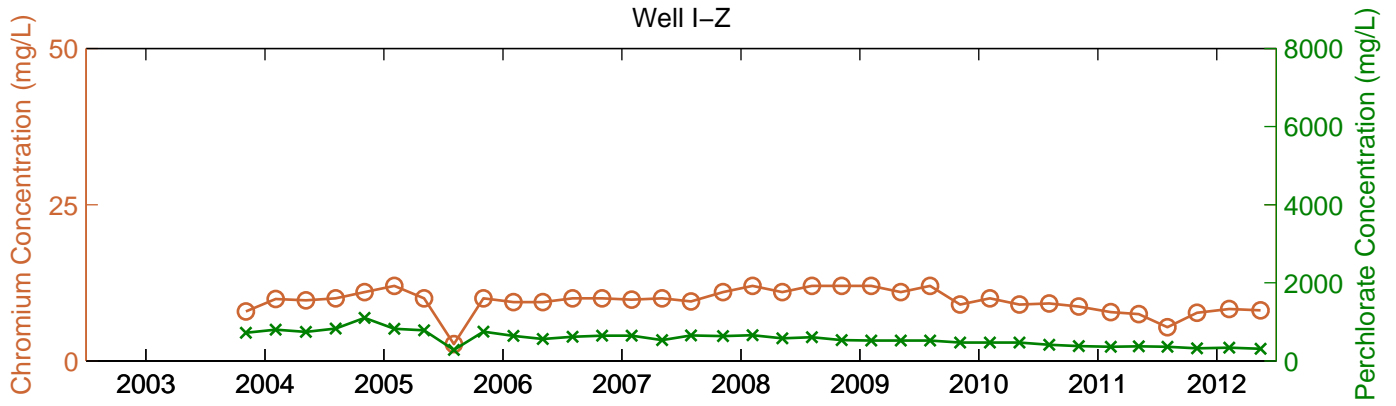
* Extraction rates for FY02/03 are the average of discharge rates reported for December 2002 and June 2003.



* Extraction rates for FY02/03 are the average of discharge rates reported for December 2002 and June 2003.



* Extraction rates for FY02/03 are the average of discharge rates reported for December 2002 and June 2003.



* Extraction rates for FY02/03 are the average of discharge rates reported for December 2002 and June 2003.