

**LEGEND**

- Sampled / Measured Well
- ★ Seep Surface-Flow Capture Sump (no longer operating)
- ▭ Nevada Environmental Response Trust Property Boundary
- ▨ Unsaturated Alluvium

**LAND OWNERSHIP**

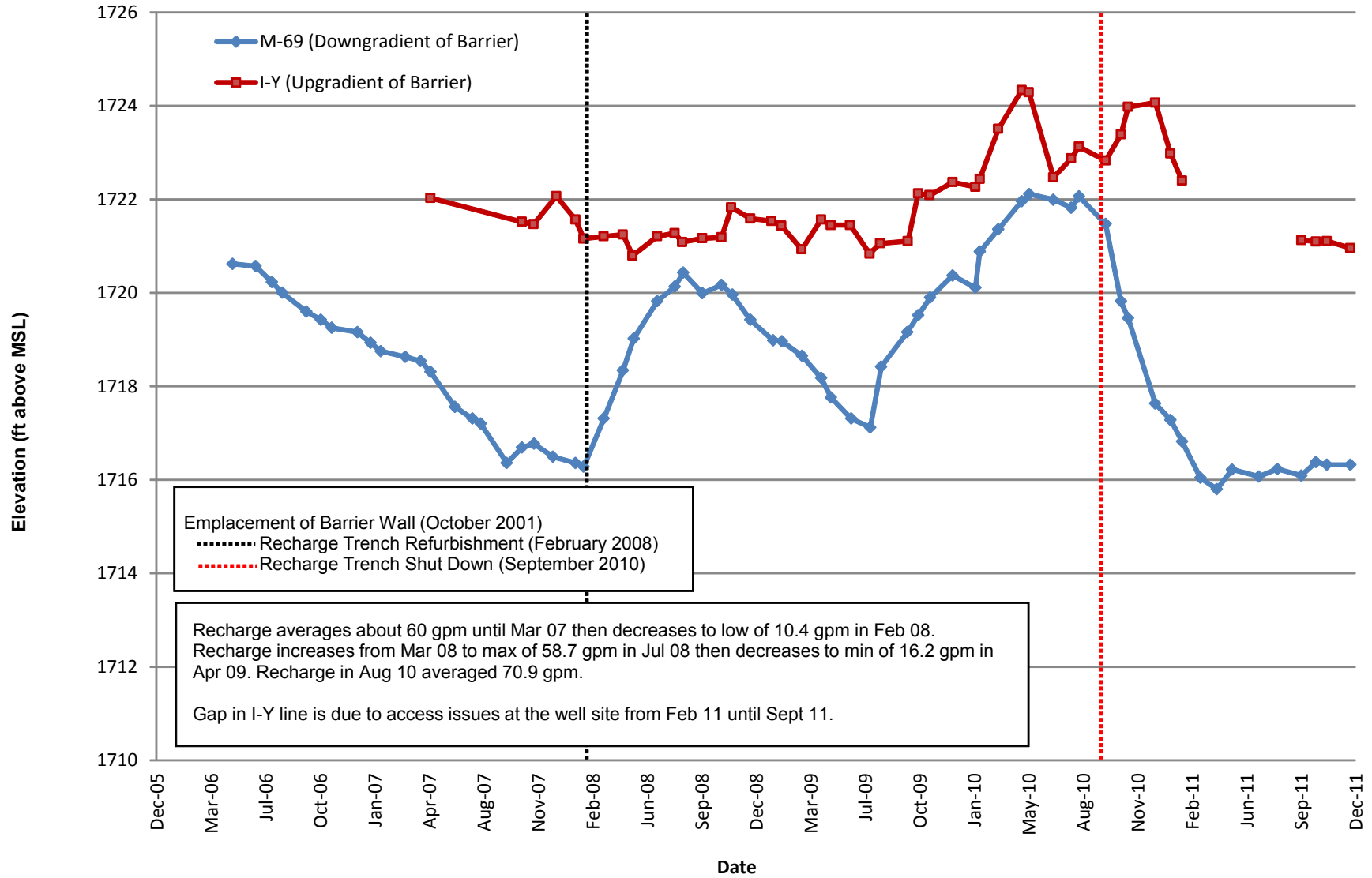
- BMI
- Chemstar
- Pioneer
- Timet

Figure 1  
**LOCATION MAP**  
 Semi-Annual Remedial Performance Report  
 Nevada Environmental Response Trust Site (NERT)  
 Henderson, Nevada

DESIGNED BY:		REVISIONS		DATE:	BY:
EJK	No.	DESCRIPTION:		2/23/2012	RS
DRAWN BY:	0	GENERATE APPROVED MAP			
RS					
CHECKED BY:					
CJR					
APPROVED BY:					
CJR/EJK					



Path: H:\LePetomane\NERT\Annual Performance Reports\2011 Semi-Annual Performance Reports\2011 - Location Map - v2 - annotations - new\_title\_block.mxd

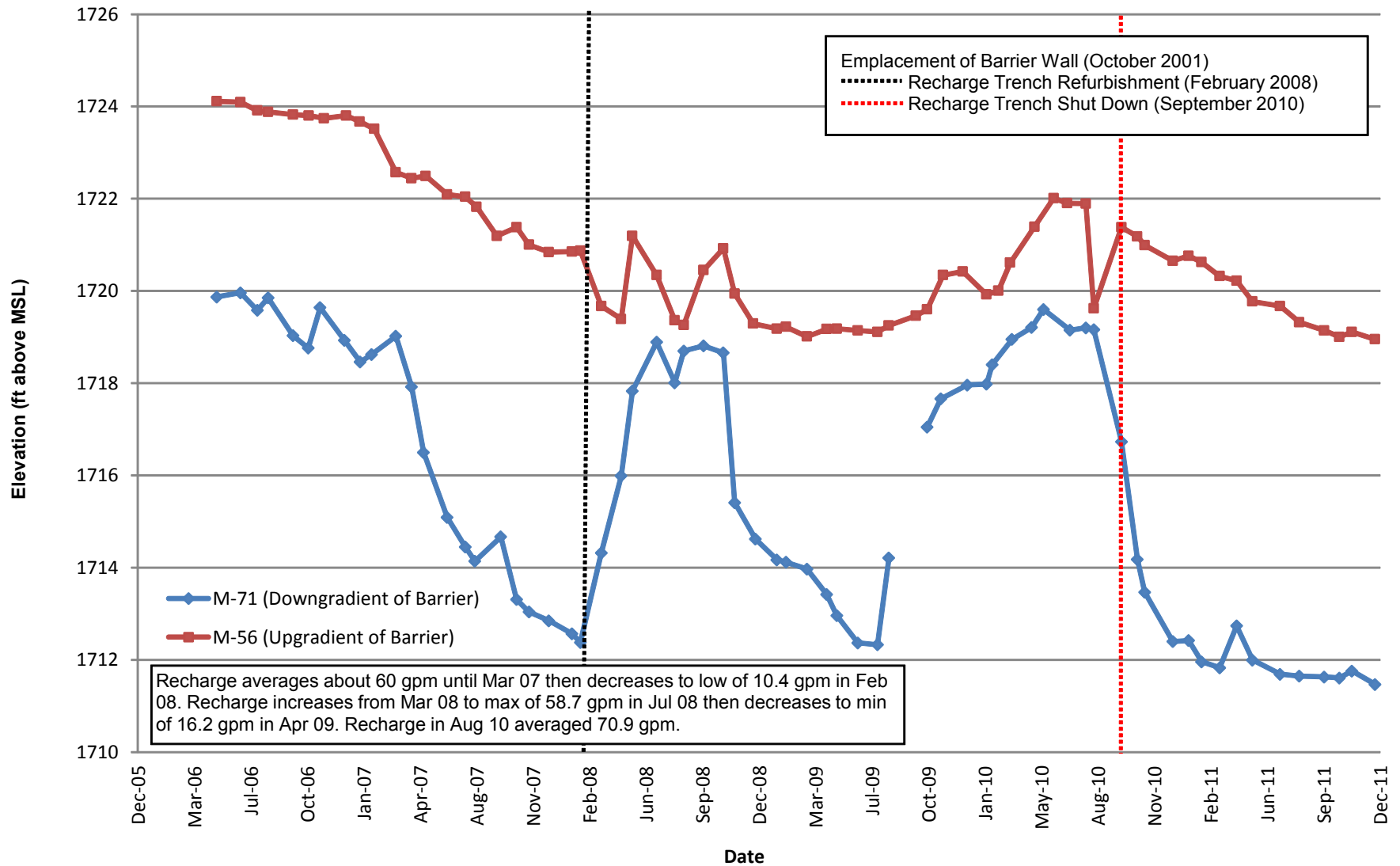


**Hydrograph Pair Across the Barrier Wall - M-69 and I-Y**  
 Nevada Environmental Response Trust Site (NERT)  
 Henderson, Nevada

Figure

**2A**

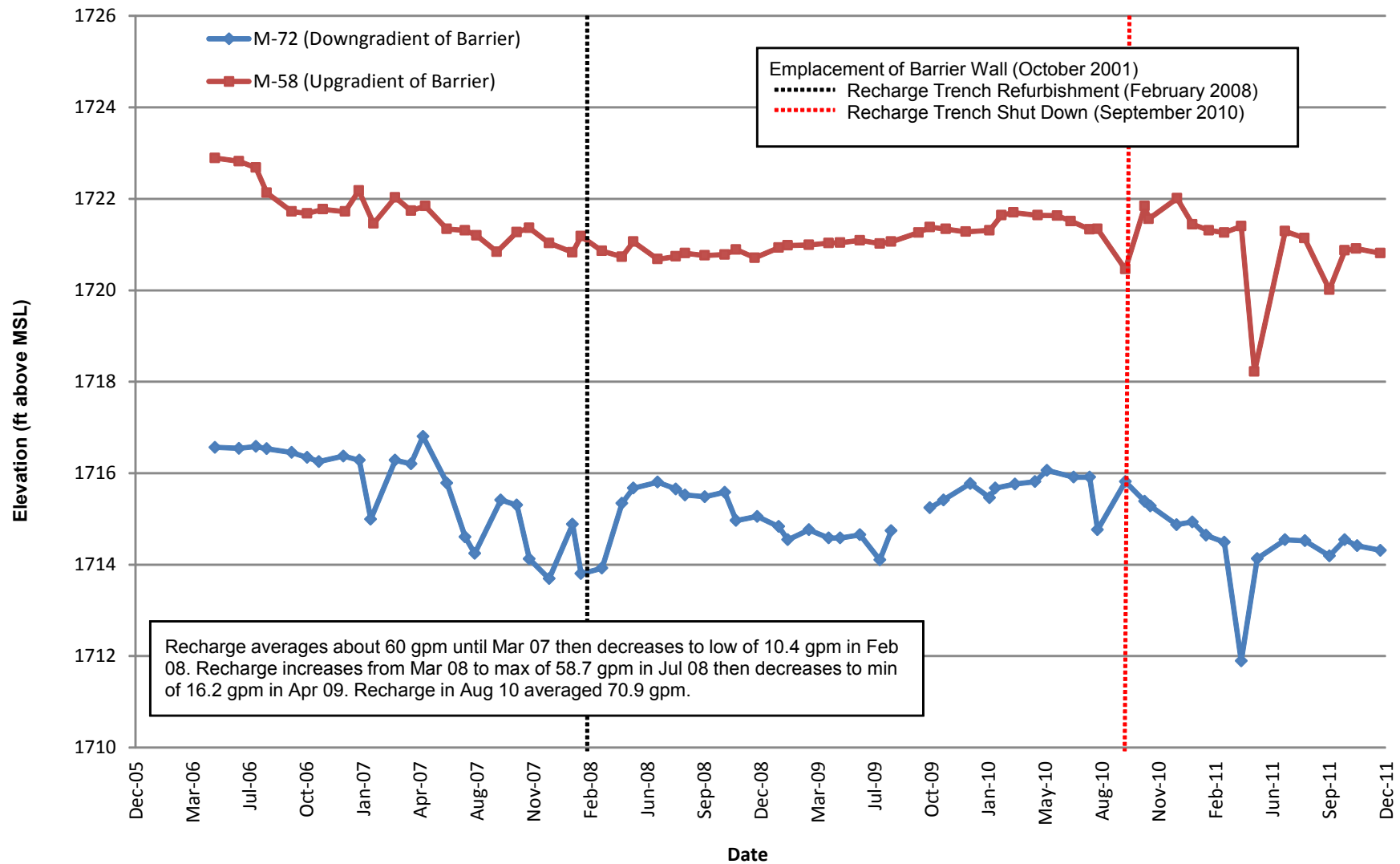




**Hydrograph Pair Across the Barrier Wall - M-71 and M-56**  
 Nevada Environmental Response Trust Site (NERT)  
 Henderson, Nevada

Figure

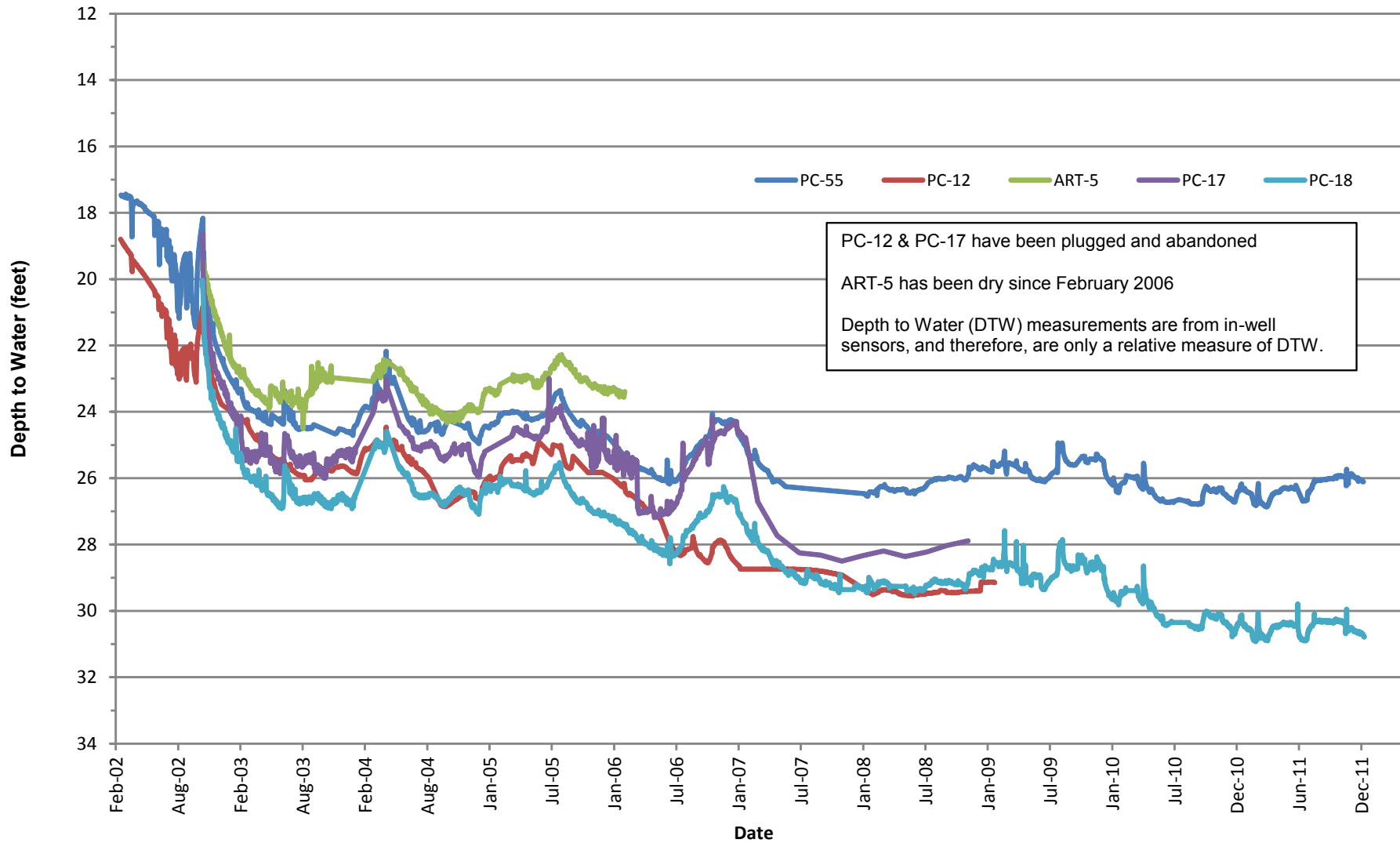
**2C**



**Hydrograph Pair Across the Barrier Wall - M-72 and M-58**  
 Nevada Environmental Response Trust Site (NERT)  
 Henderson, Nevada

Figure

**2D**



**Athens Road Well Field Drawdown**  
 Nevada Environmental Response Trust Site (NERT)  
 Henderson, Nevada

Figure

**3**

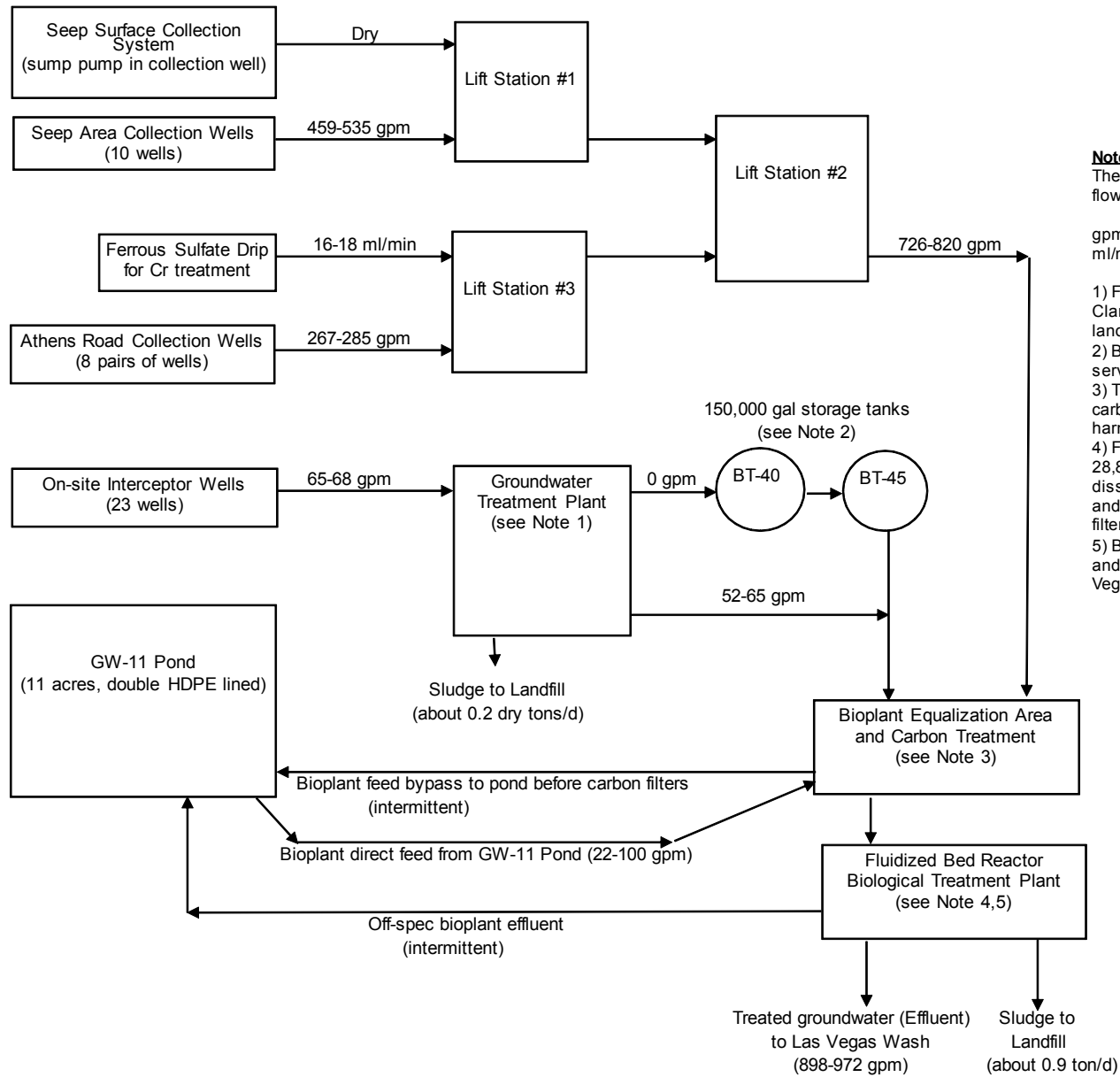
Drafter: RS

Date: 2/29/12

Contract Number: 21-29100G

Approved:

Revised:



**Notes:**

The process flows shown are average monthly flows from July-December 2011.

gpm = gallons per minute  
ml/min = milliliters per minute

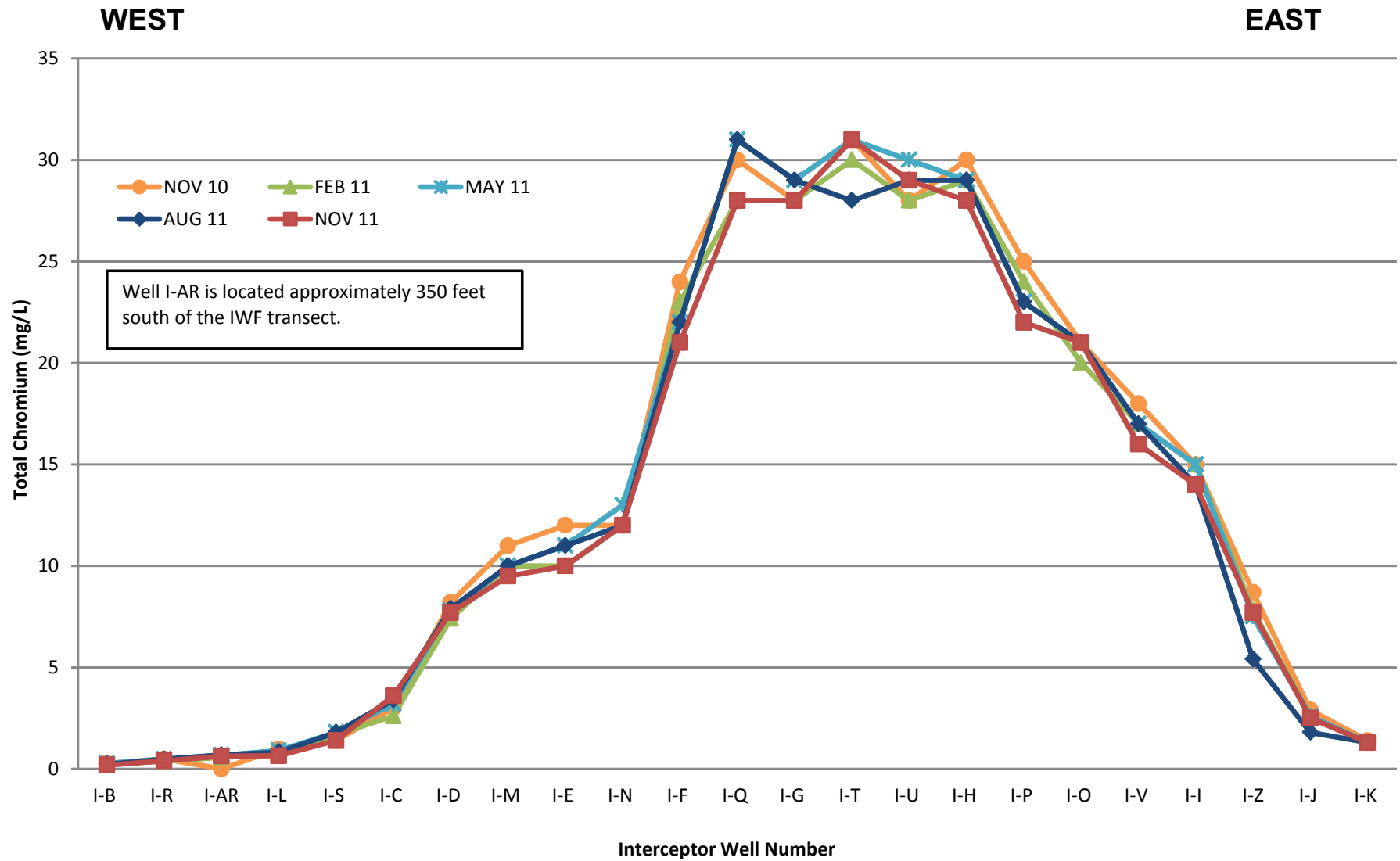
- 1) Ferrous sulfate added for chromium removal. Clarifier settles solids. Sludge is removed and landfilled.
- 2) BT-40 and BT-45 tanks not currently in service.
- 3) Two 12,000 gallon tanks plus three activated carbon vessels to remove organics which could harm bacteria, followed by cartridge filters.
- 4) Five 33,000 gallon primary reactors, four 28,800 gallon secondary reactors, aeration, dissolved air flotation, UV disinfection, two plate and frame filter presses, and a sand filter.
- 5) Biopant feed is sampled after cartridge filters and effluent is sampled at the discharge to Las Vegas Wash.



**Groundwater Extraction and Treatment System (GWETS) Flow Diagram**  
Nevada Environmental Response Trust Site (NERT)  
Henderson, Nevada

Figure

**4**

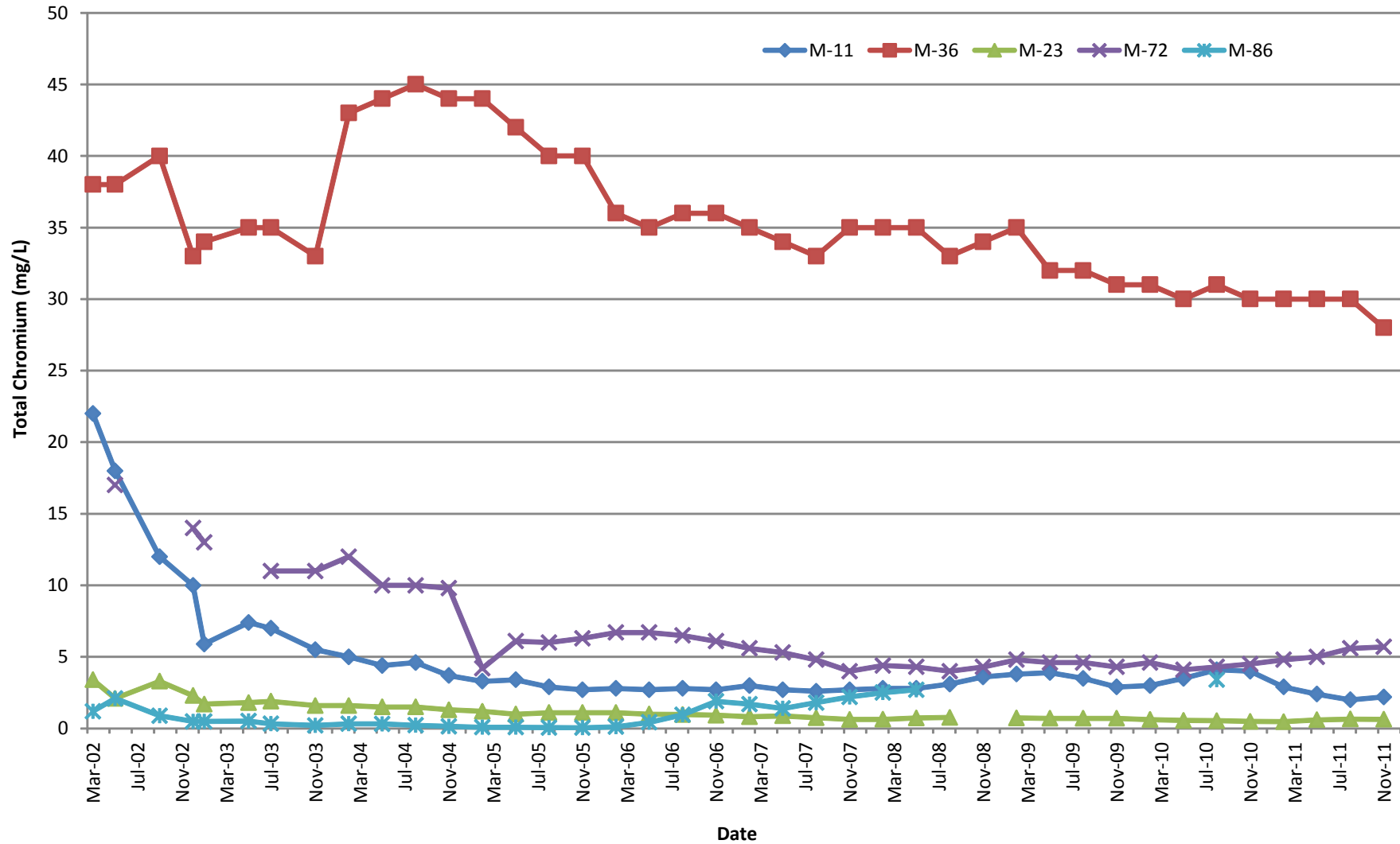


**Interceptor Well Field Transect Total Chromium Concentrations**  
 Nevada Environmental Response Trust Site (NERT)  
 Henderson, Nevada

Figure

**5**

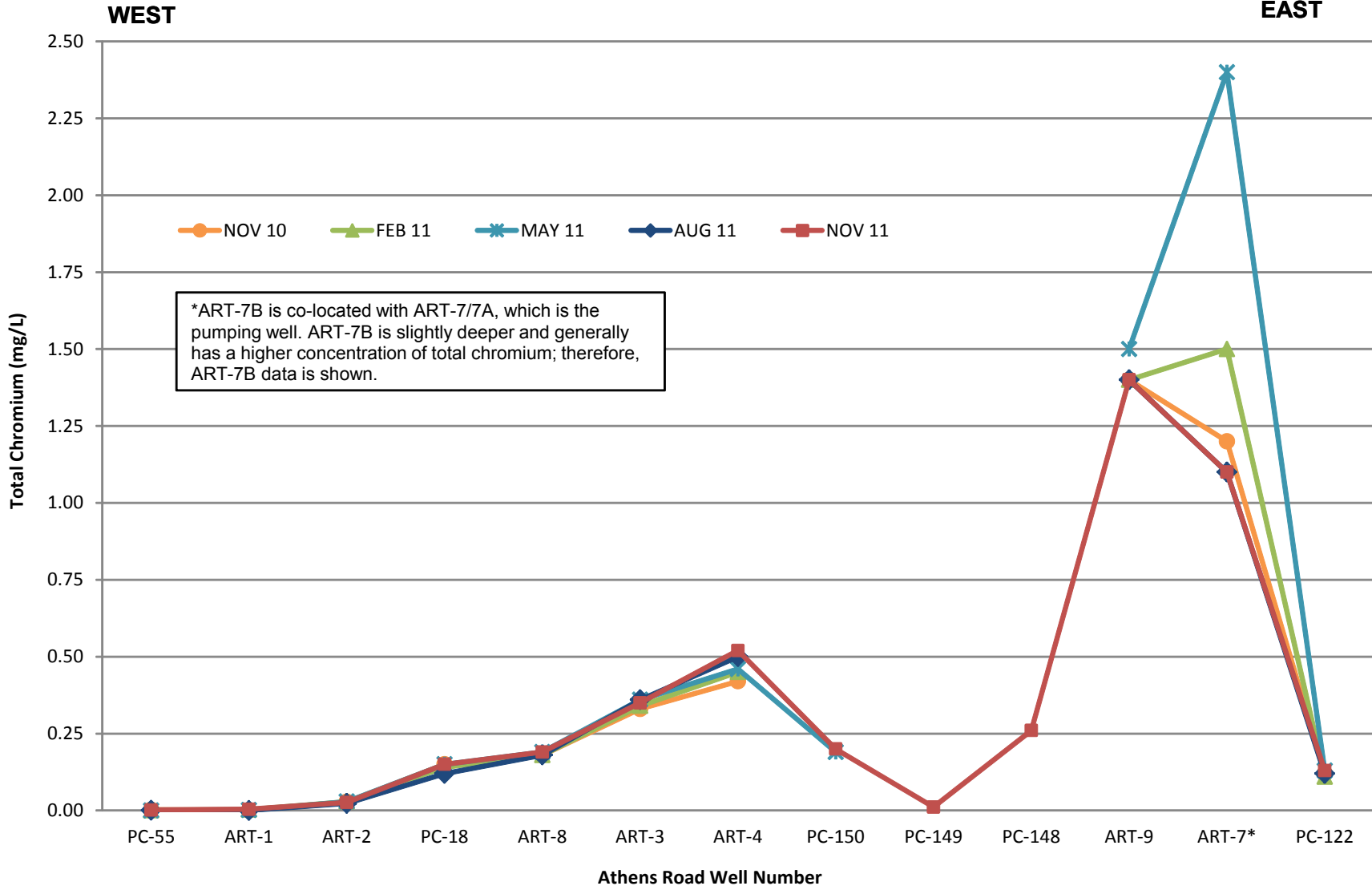




**Consent Order Appendix J Wells Total Chromium Concentration Trends**  
 Nevada Environmental Response Trust Site (NERT)  
 Henderson, Nevada

Figure

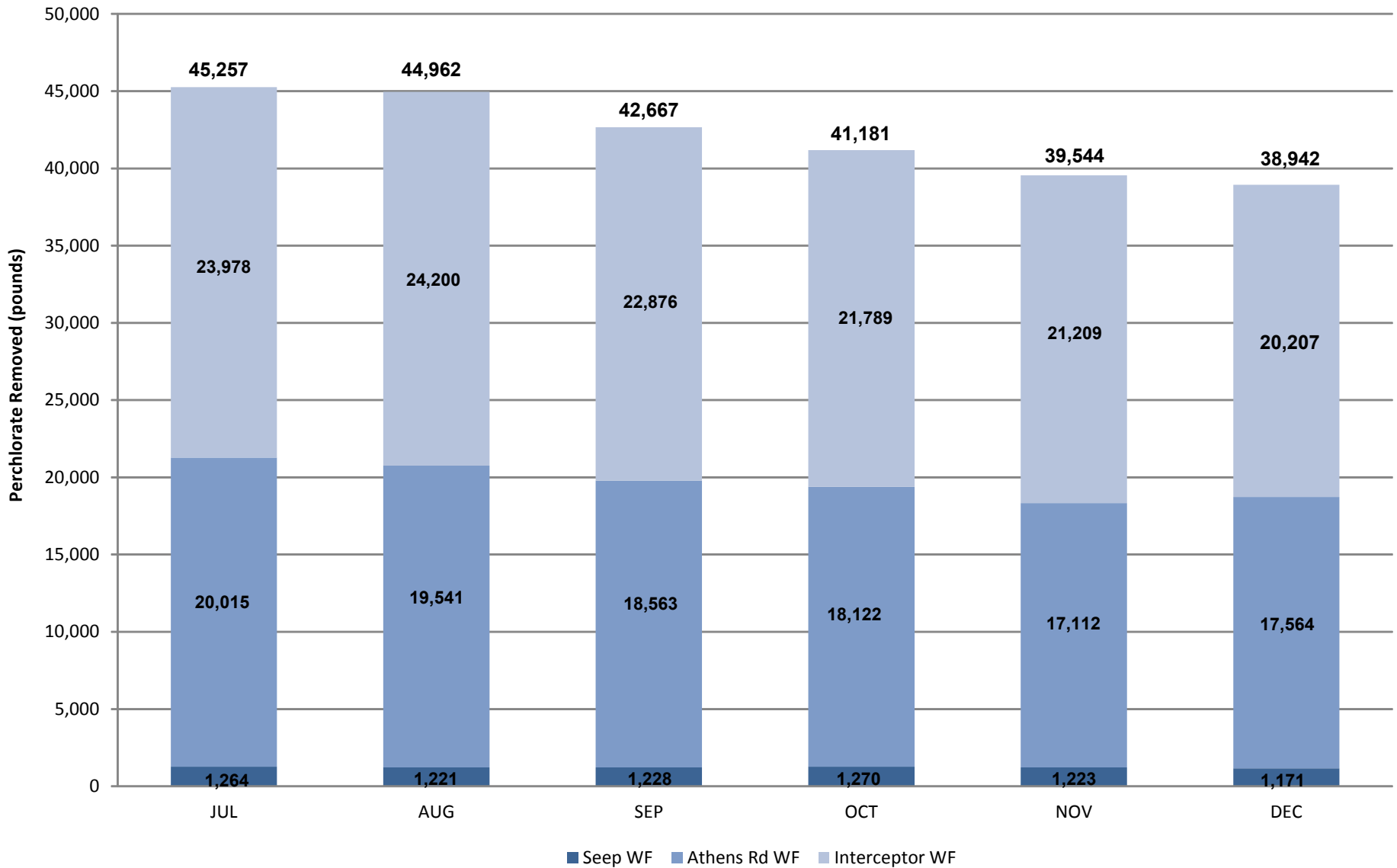
**6**



**Athens Road Well Field Transect Total Chromium Concentrations**  
 Nevada Environmental Response Trust Site (NERT)  
 Henderson, Nevada

Figure

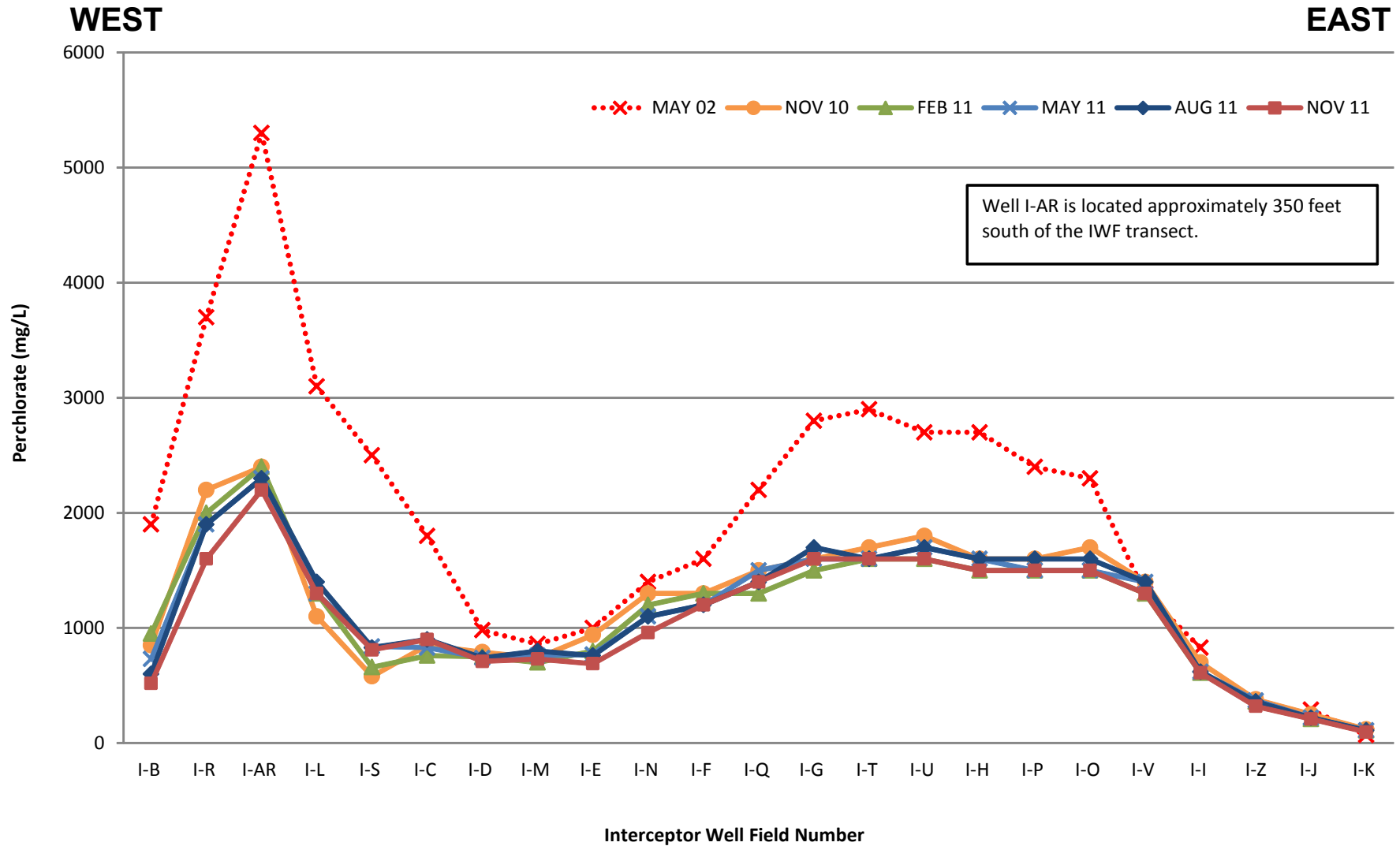
**7**



**Perchlorate Removed from the Environment July 2011 - December 2011**  
 Nevada Environmental Response Trust Site (NERT)  
 Henderson, Nevada

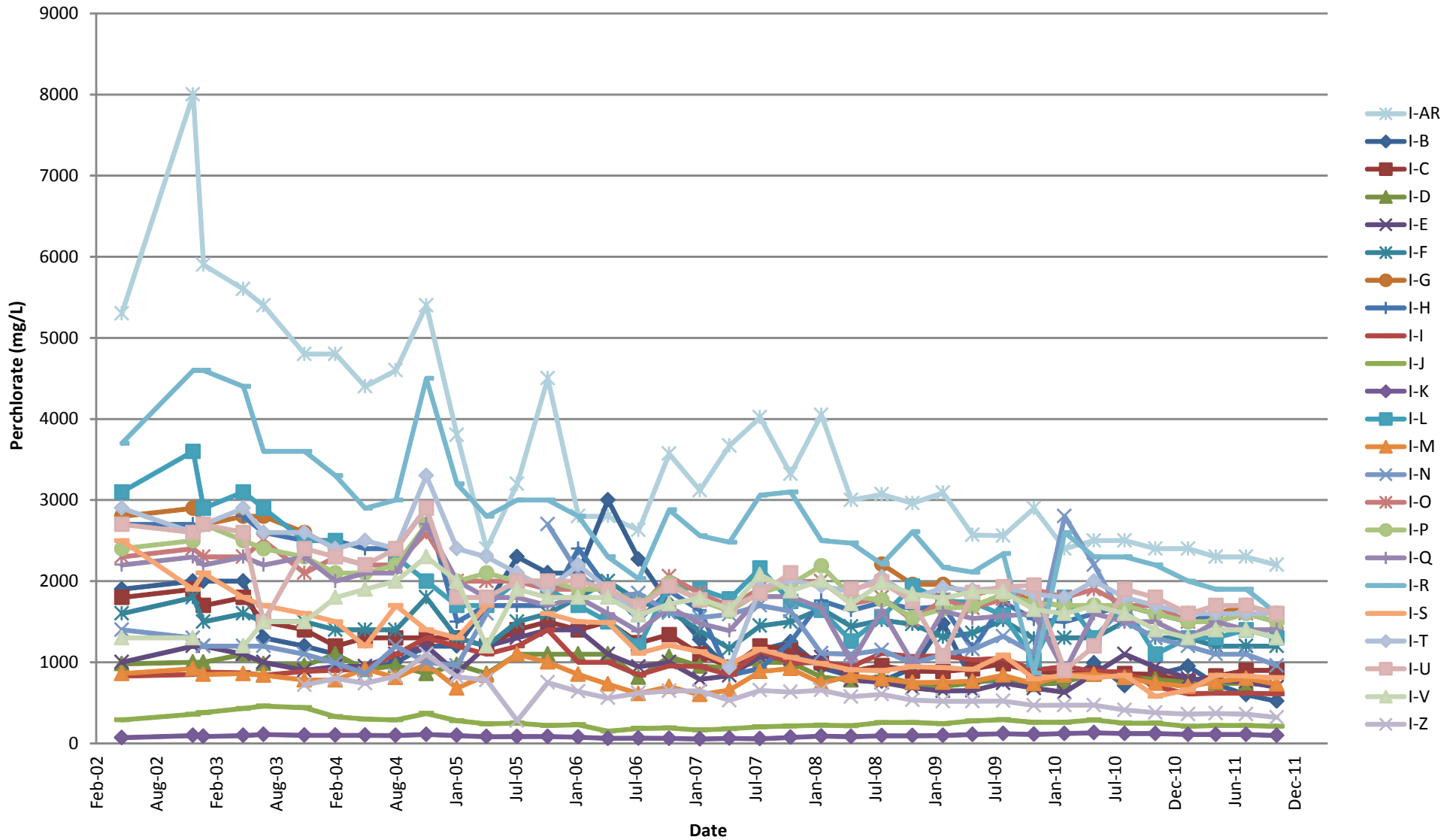
Figure

**8**



**Interceptor Well Field Transect Perchlorate Concentrations**  
 Nevada Environmental Response Trust Site (NERT)  
 Henderson, Nevada

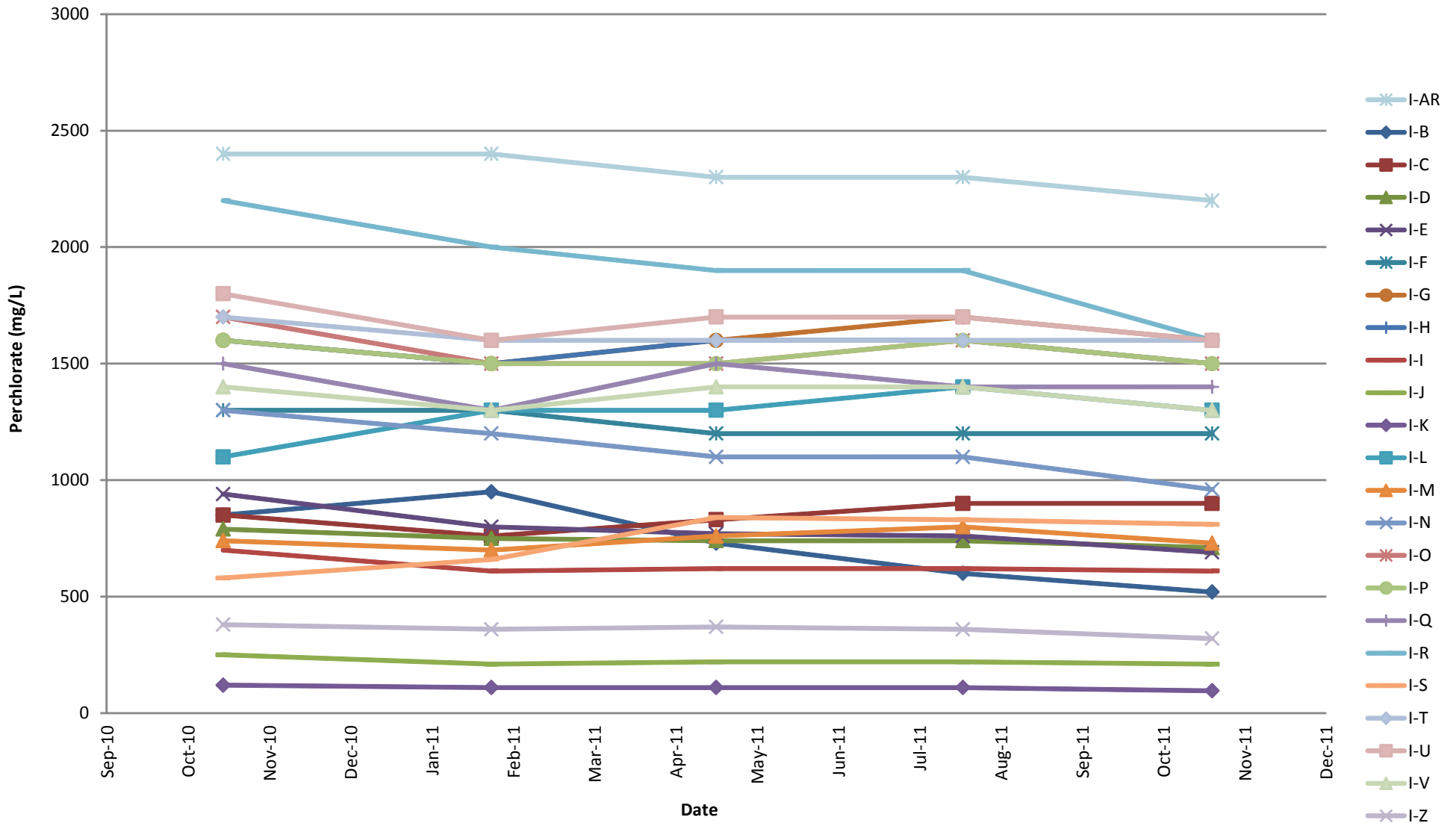
Figure



**Interceptor Well Field Perchlorate Concentration Trends**  
 Nevada Environmental Response Trust Site (NERT)  
 Henderson, Nevada

Figure

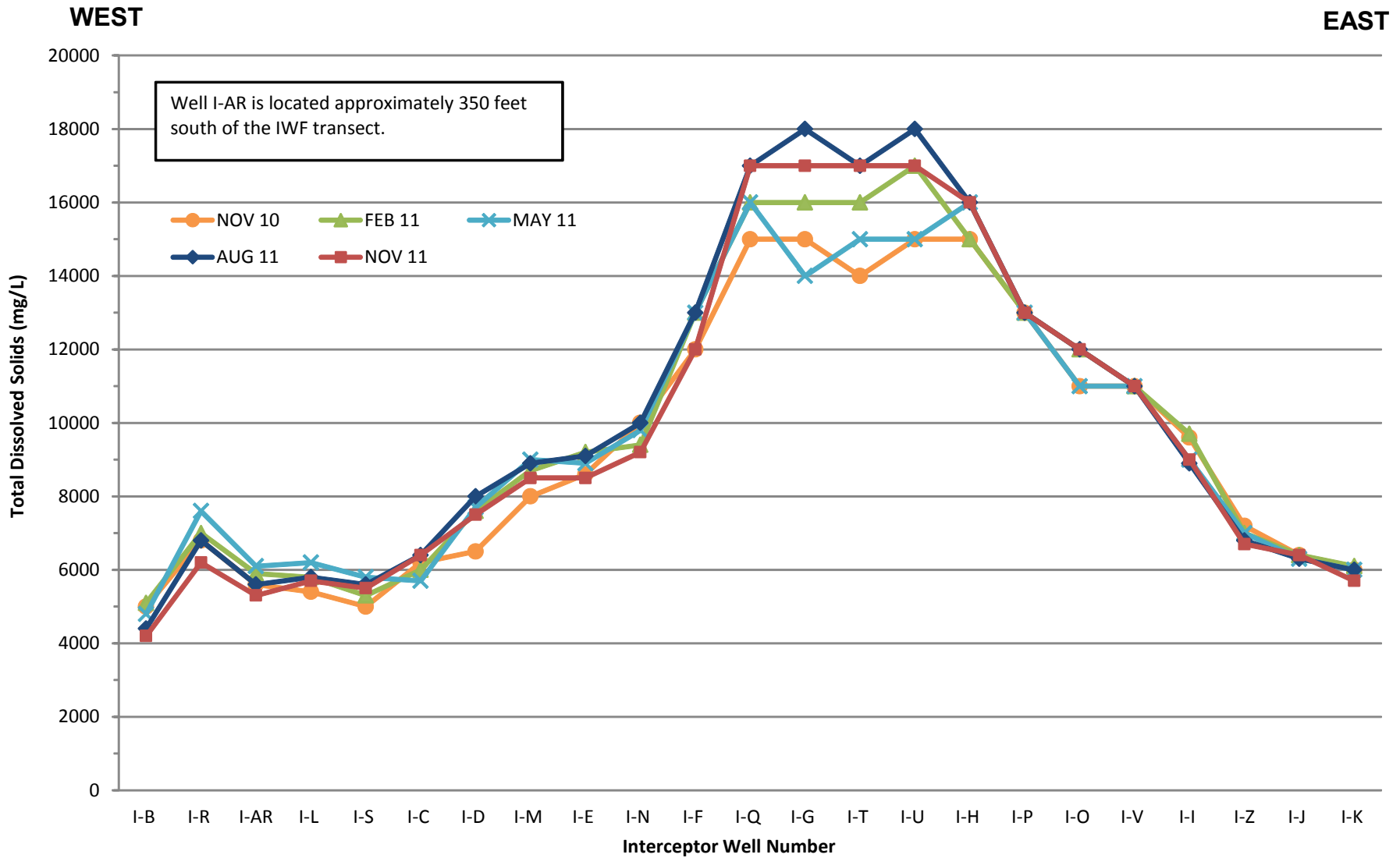
**10**



**Interceptor Well Field Perchlorate Concentration Trends, Nov 2010 - Nov 2011**  
 Nevada Environmental Response Trust Site (NERT)  
 Henderson, Nevada

Figure

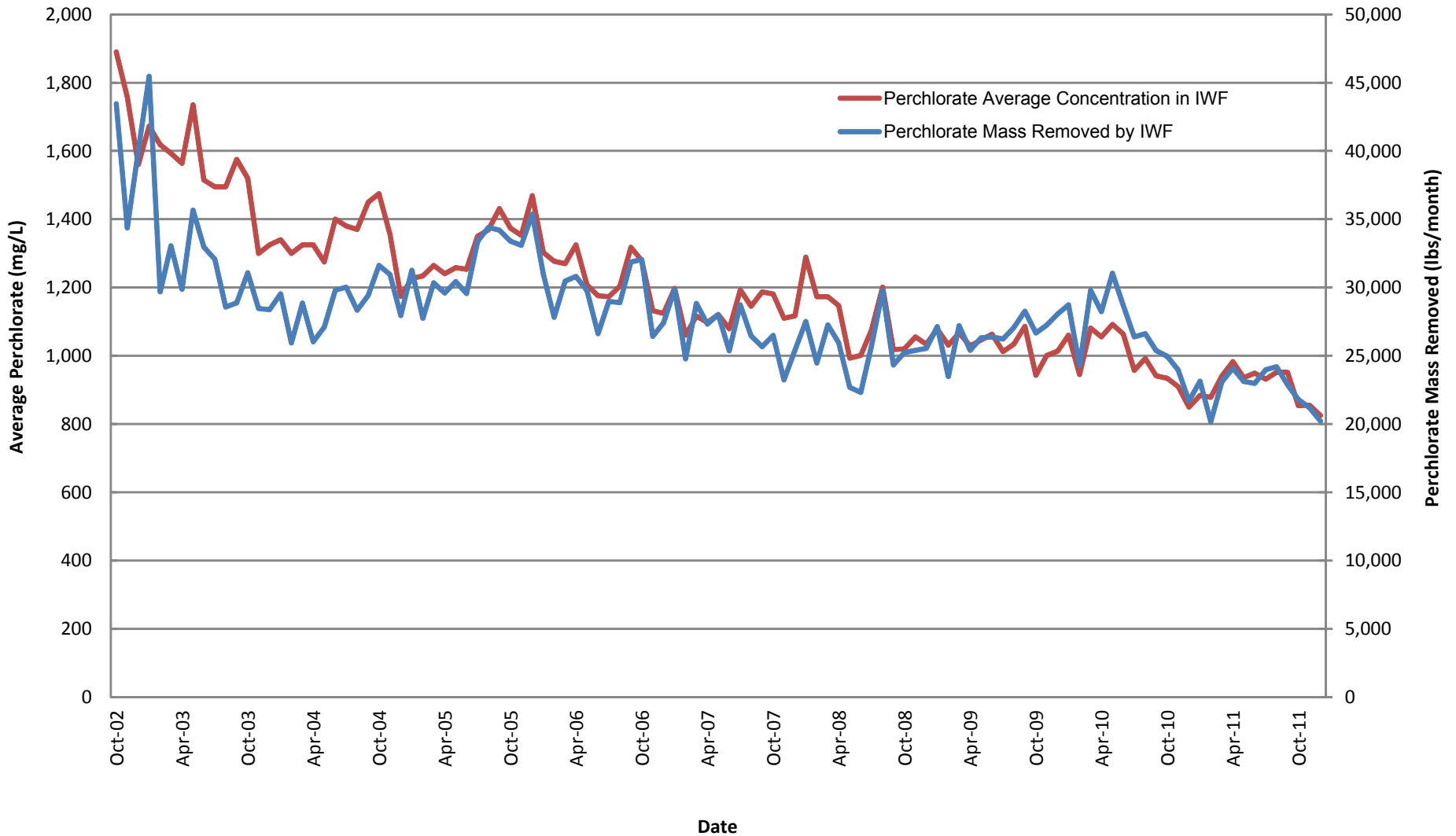
**10A**



**Interceptor Well Field Transect Total Dissolved Solids Concentrations**  
 Nevada Environmental Response Trust Site (NERT)  
 Henderson, Nevada

Figure

**11**

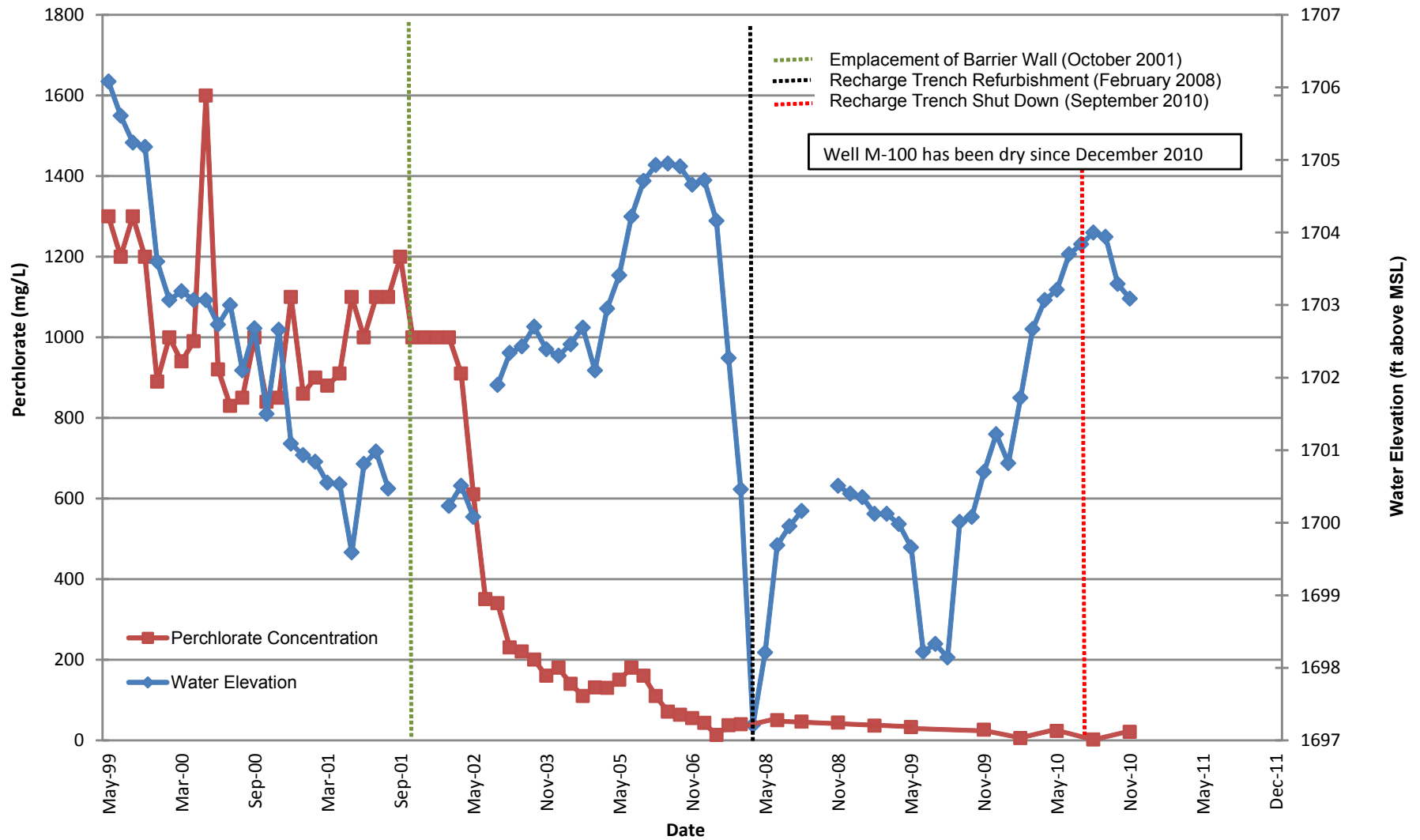


**Interceptor Well Field Average Perchlorate Concentration and Mass Removed**  
 Nevada Environmental Response Trust Site (NERT)  
 Henderson, Nevada

Figure

**12**

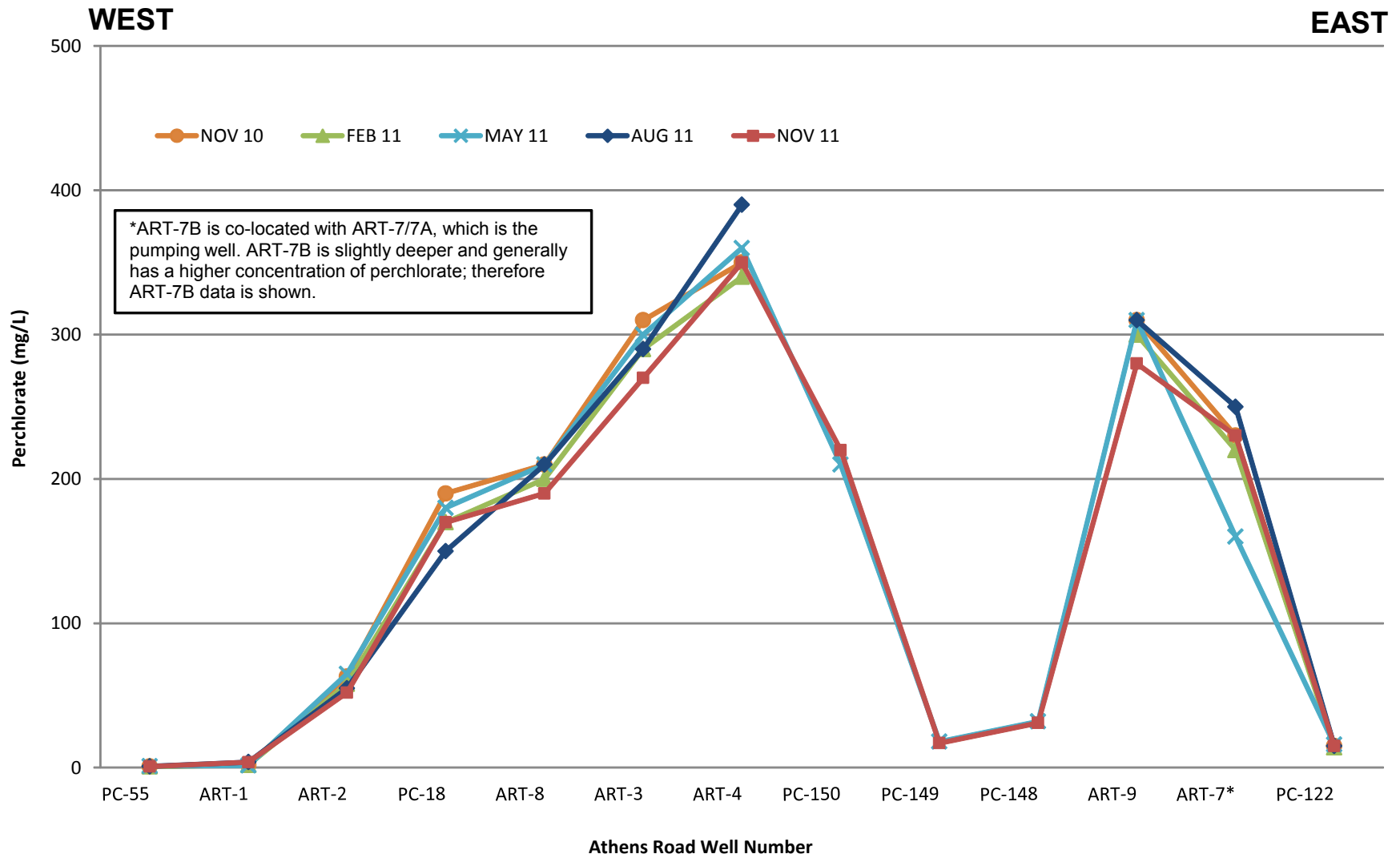




**Well M-100 Perchlorate Concentration vs. Water Elevation Trends**  
 Nevada Environmental Response Trust Site (NERT)  
 Henderson, Nevada

Figure

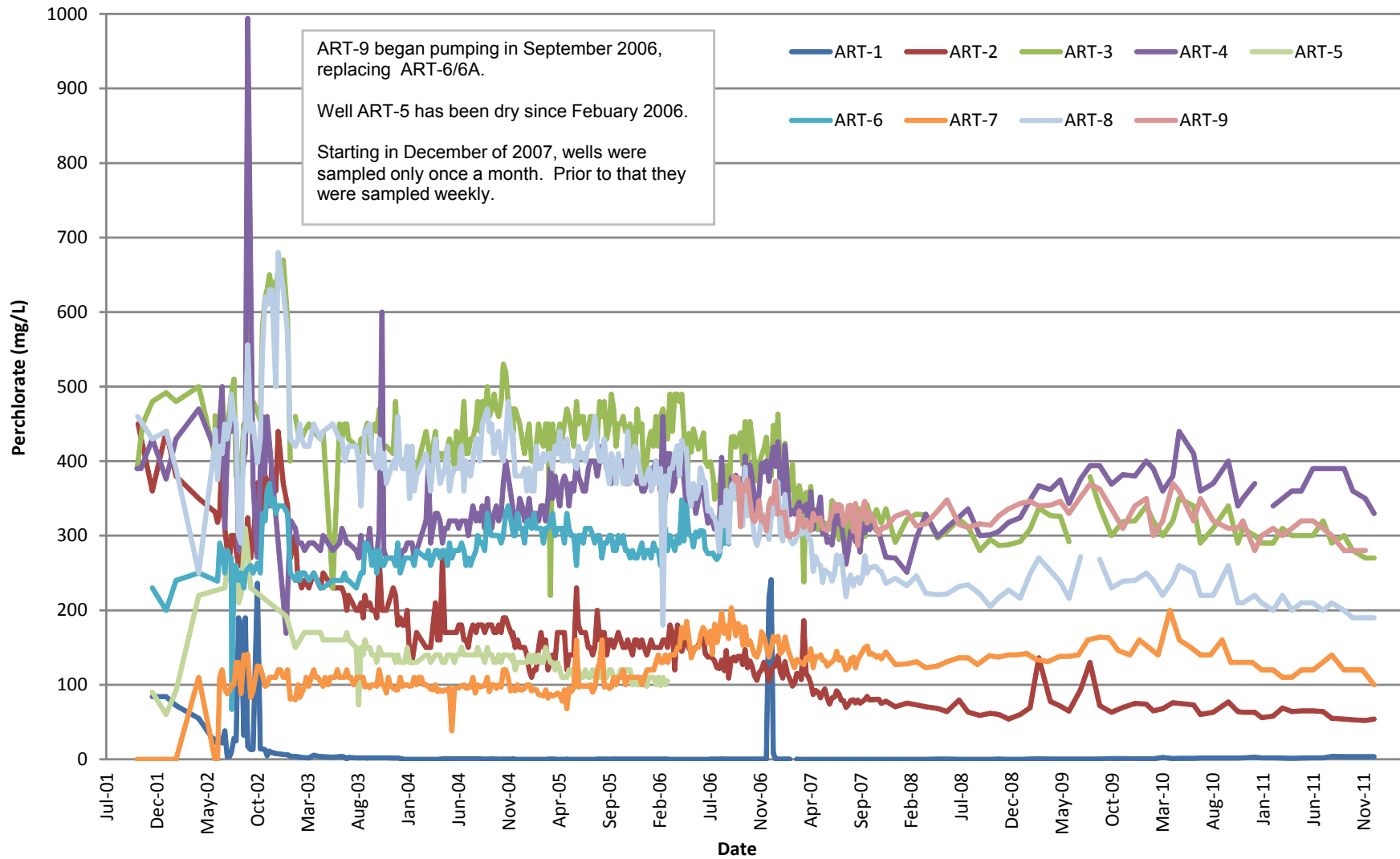
**13**



**Athens Road Well Field Transect Perchlorate Concentrations**  
 Nevada Environmental Response Trust Site (NERT)  
 Henderson, Nevada

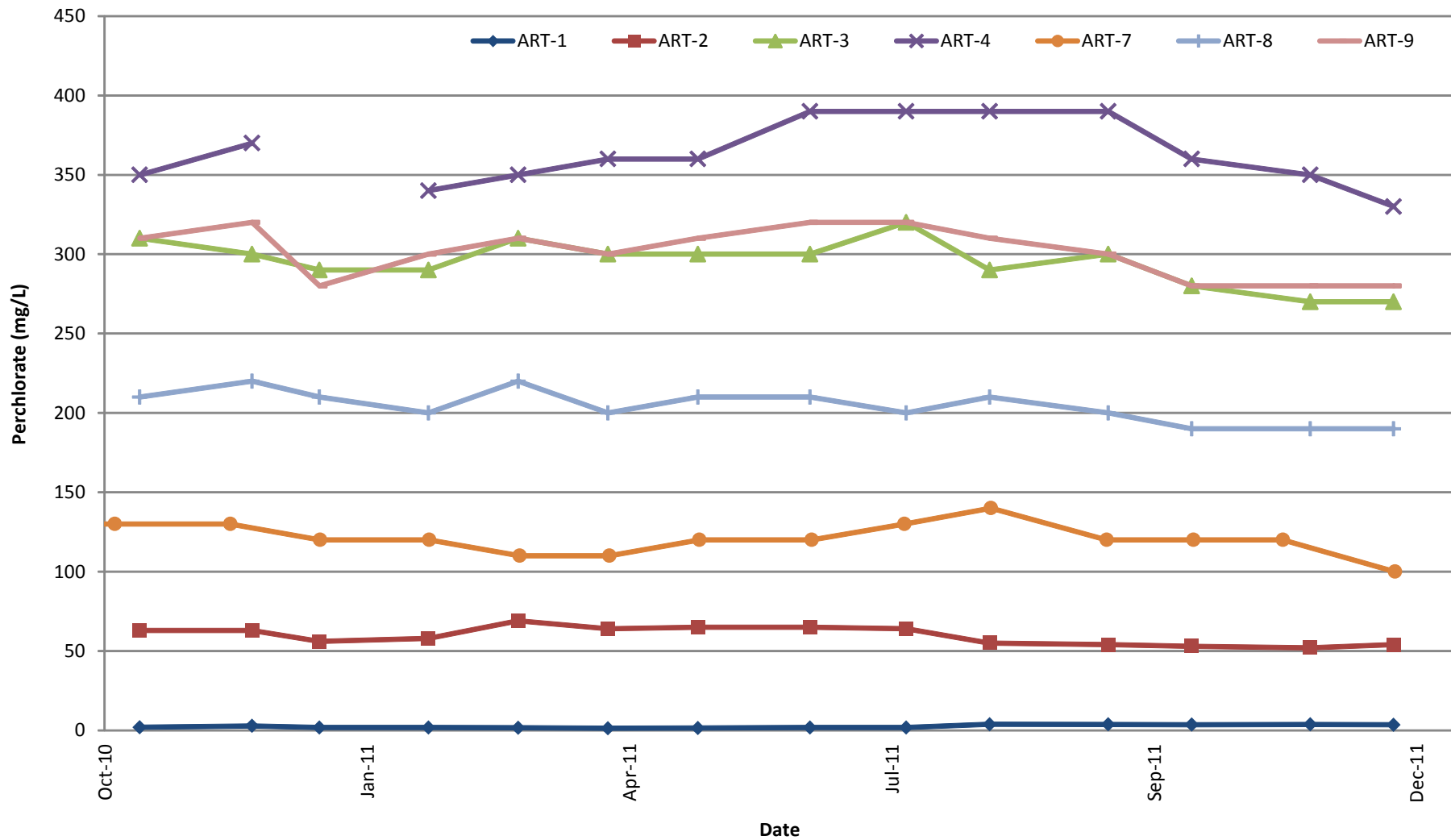
Figure

**14**



**Athens Road Well Field Perchlorate Concentration Trends**  
 Nevada Environmental Response Trust Site (NERT)  
 Henderson, Nevada

Figure



**Athens Road WF Perchlorate Concentration Trends, May 2010 - June 2011**  
 Nevada Environmental Response Trust Site (NERT)  
 Henderson, Nevada

Figure

**15A**

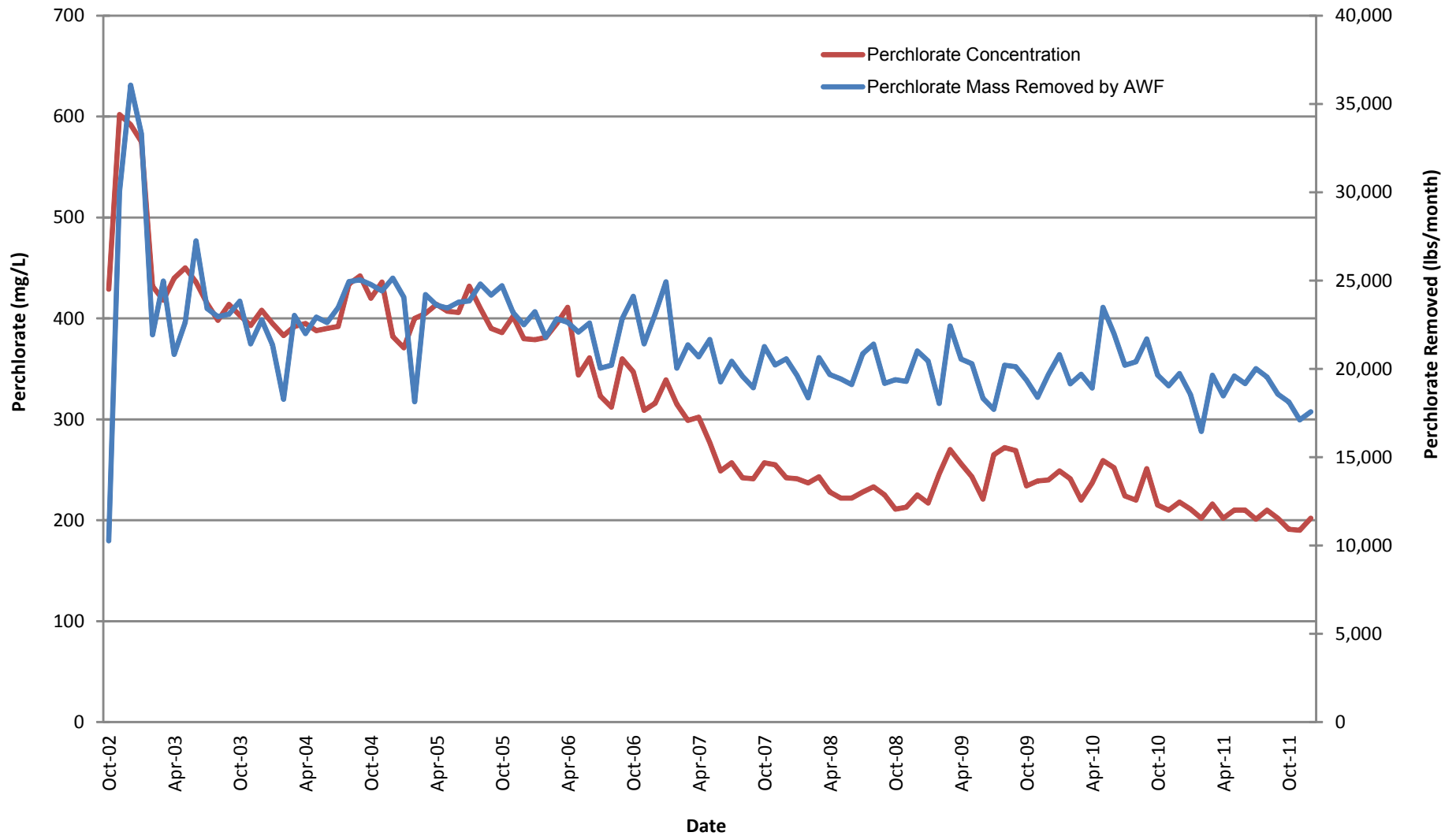
Drafter: RS

Date: 2/29/12

Contract Number: 21-29100G

Approved:

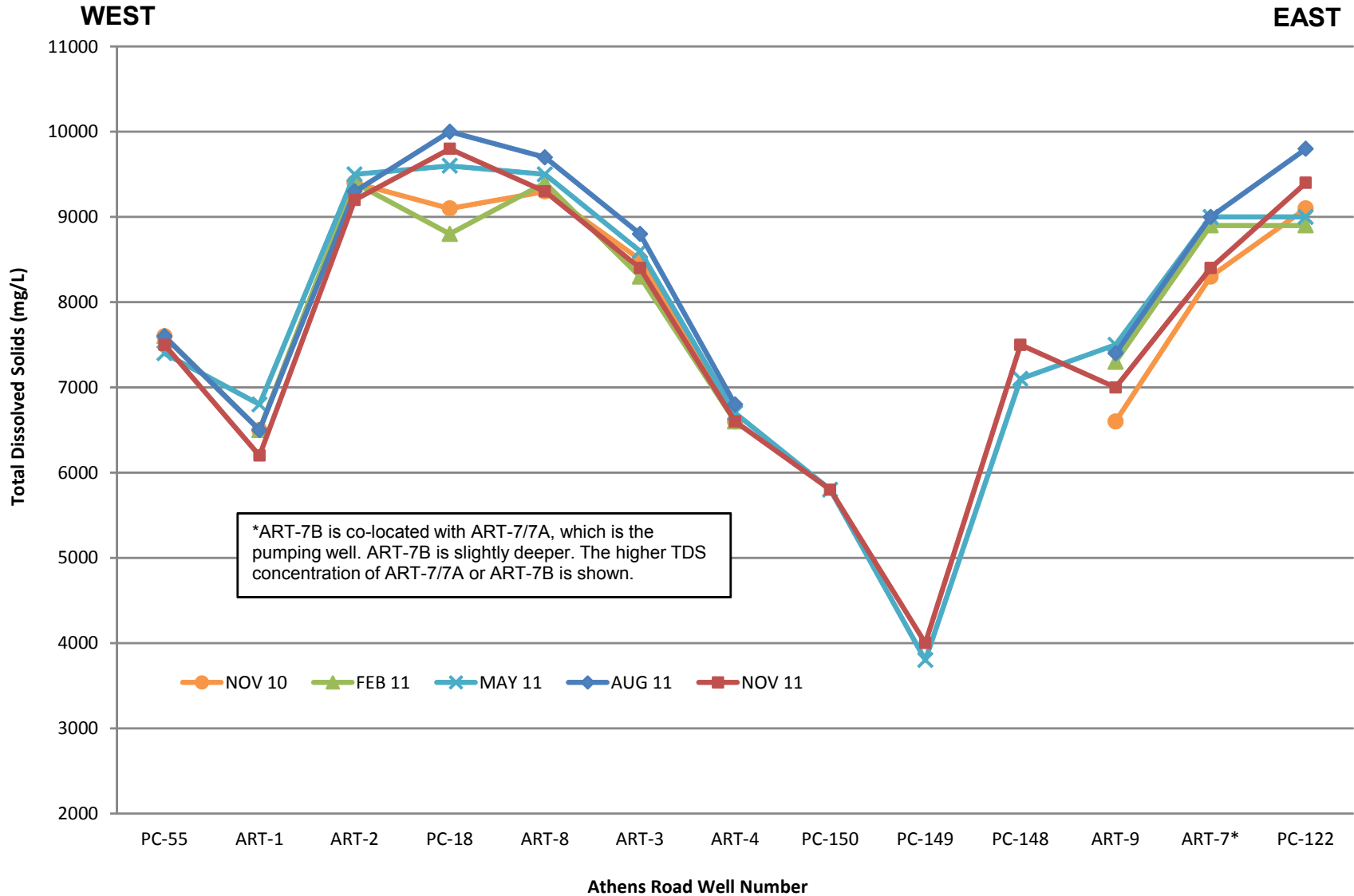
Revised:



**Athens Road Well Field Perchlorate Concentration in ART-8 and Mass Removed**  
 Nevada Environmental Response Trust Site (NERT)  
 Henderson, Nevada

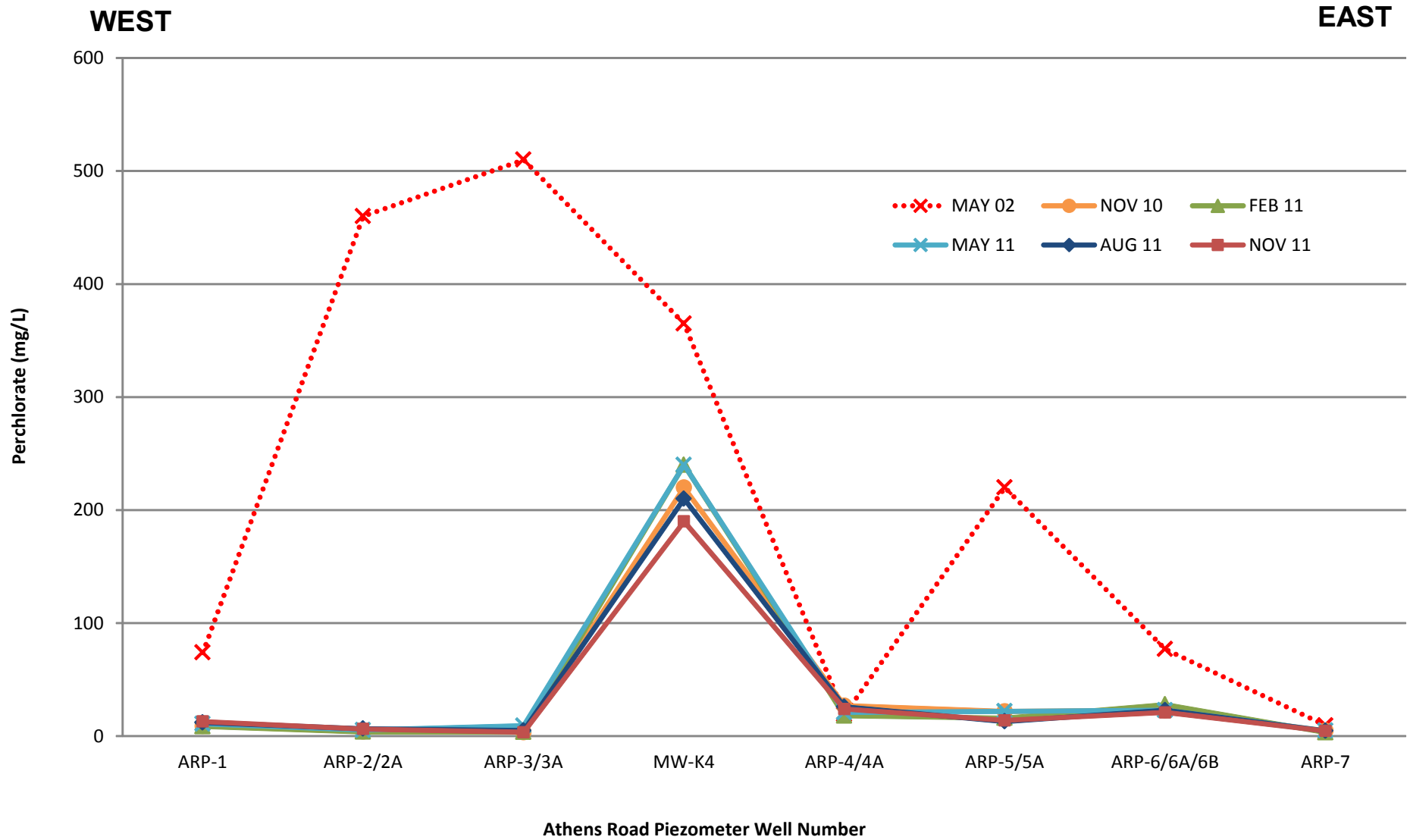
Figure

**16**



**Athens Road Well Field Transect Total Dissolved Solids Concentrations**  
 Nevada Environmental Response Trust Site (NERT)  
 Henderson, Nevada

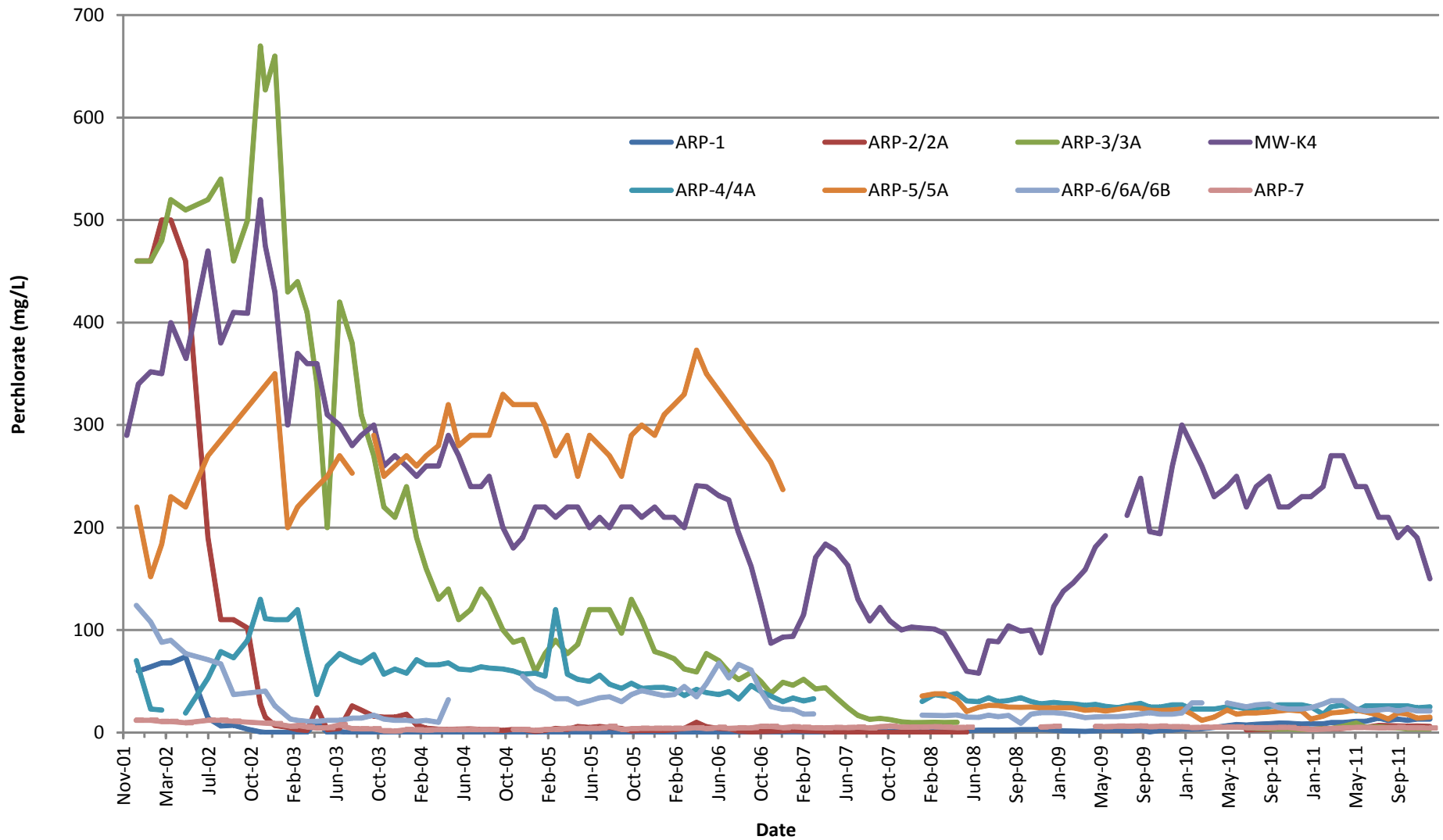
Figure



**Athens Road Piezometer Well Line Transect Perchlorate Concentrations**  
 Nevada Environmental Response Trust Site (NERT)  
 Henderson, Nevada

Figure

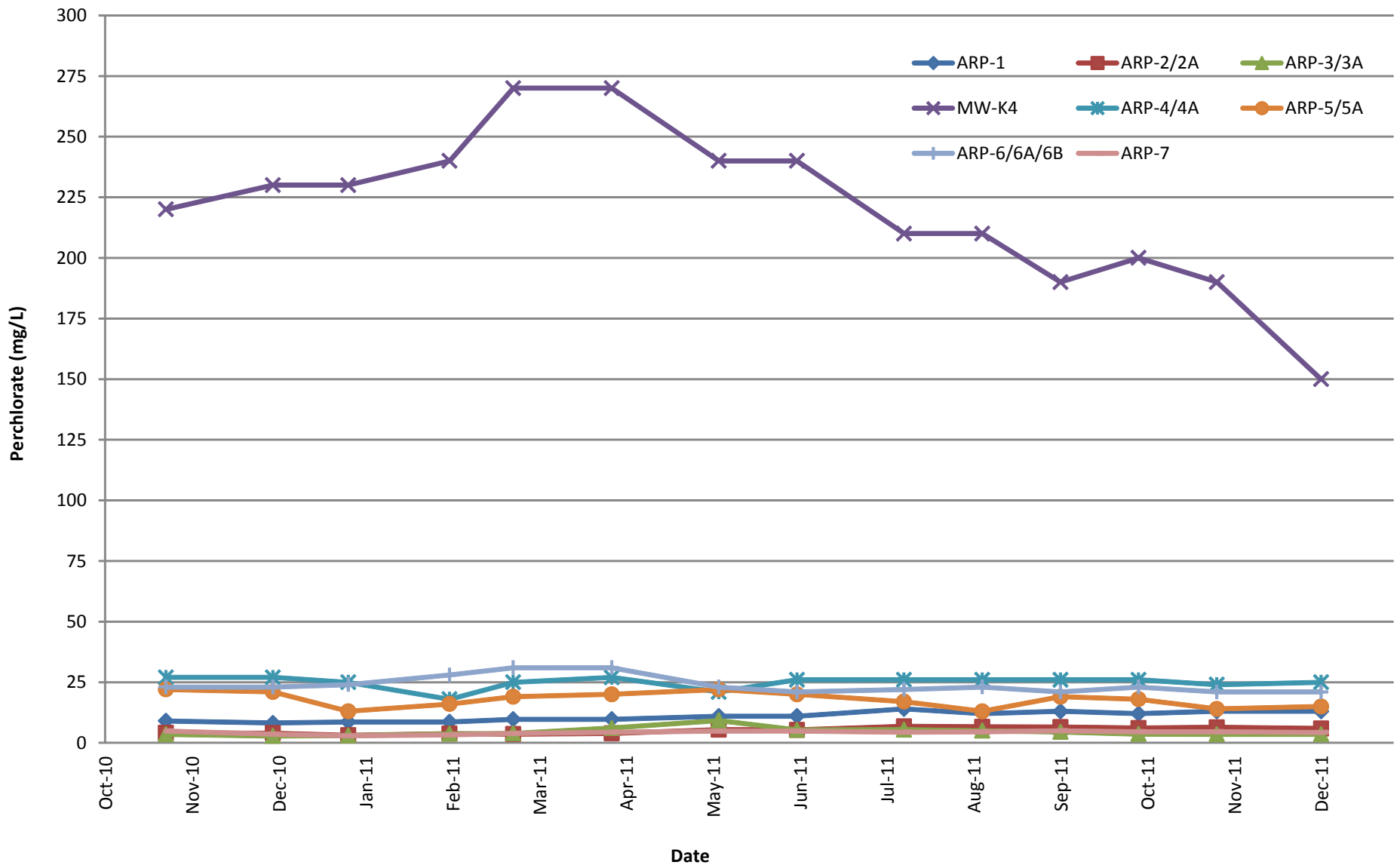
**18**



**Athens Road Piezometer Well Line Perchlorate Concentration Trends**  
 Nevada Environmental Response Trust Site (NERT)  
 Henderson, Nevada

Figure





**Athens Road Piezometer Well Line Perchlorate Concentration Trends, Nov 2010 - Dec 2011**  
 Nevada Environmental Response Trust Site (NERT)  
 Henderson, Nevada

Figure

**19A**

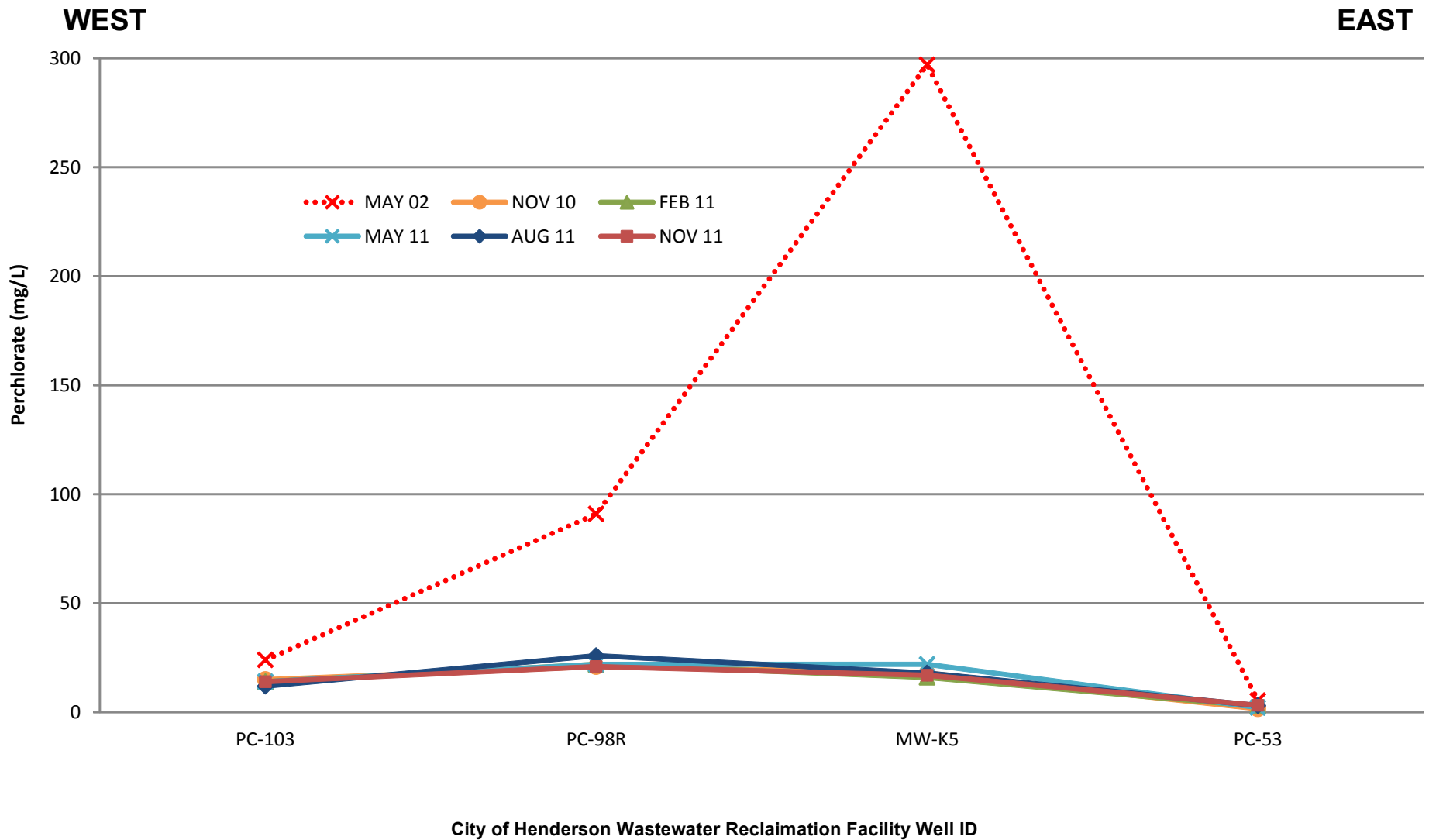
Drafter: RS

Date: 2/29/12

Contract Number: 21-29100G

Approved:

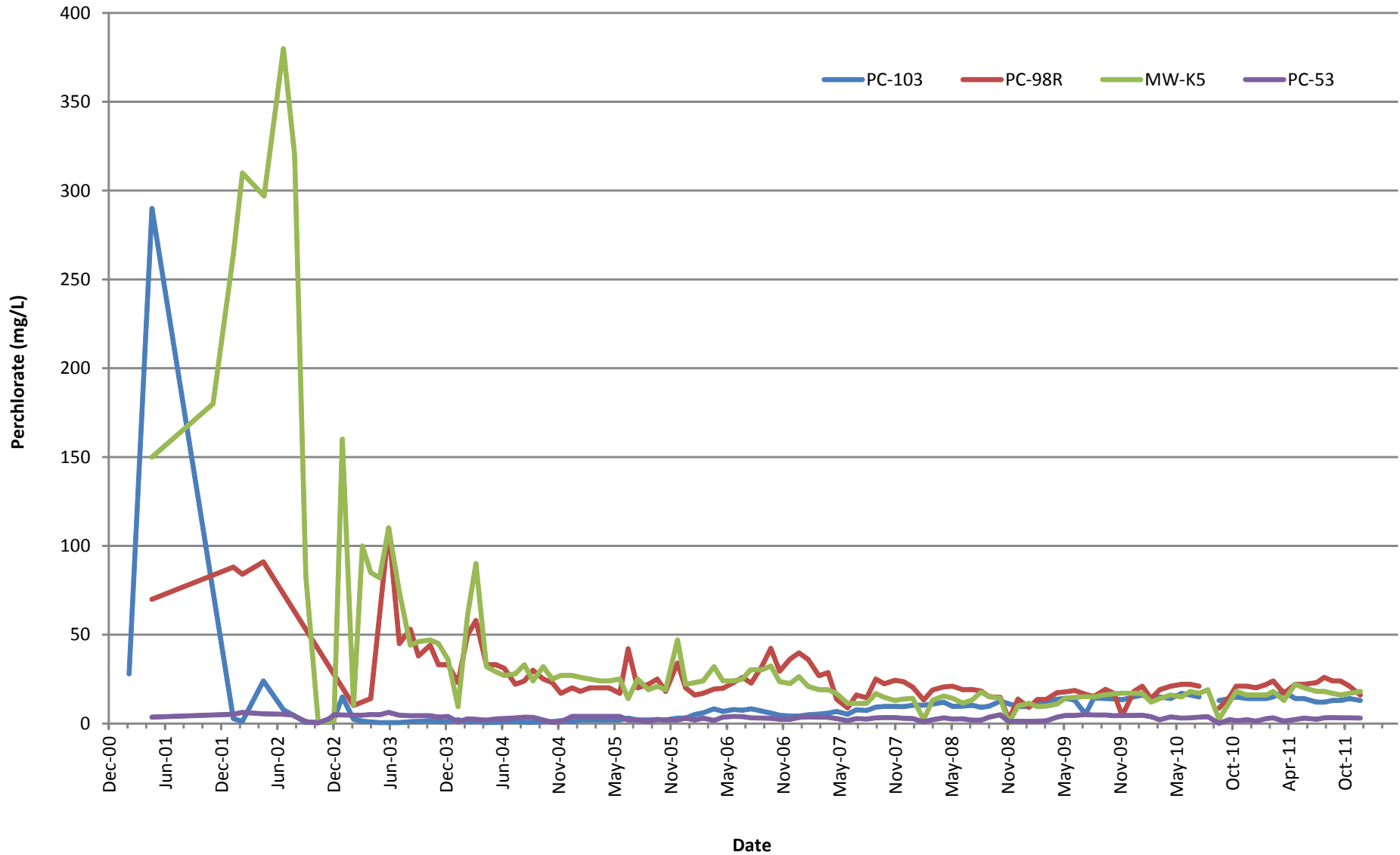
Revised:



**City of Henderson WRF Well Line Transect Perchlorate Concentrations**  
 Nevada Environmental Response Trust Site (NERT)  
 Henderson, Nevada

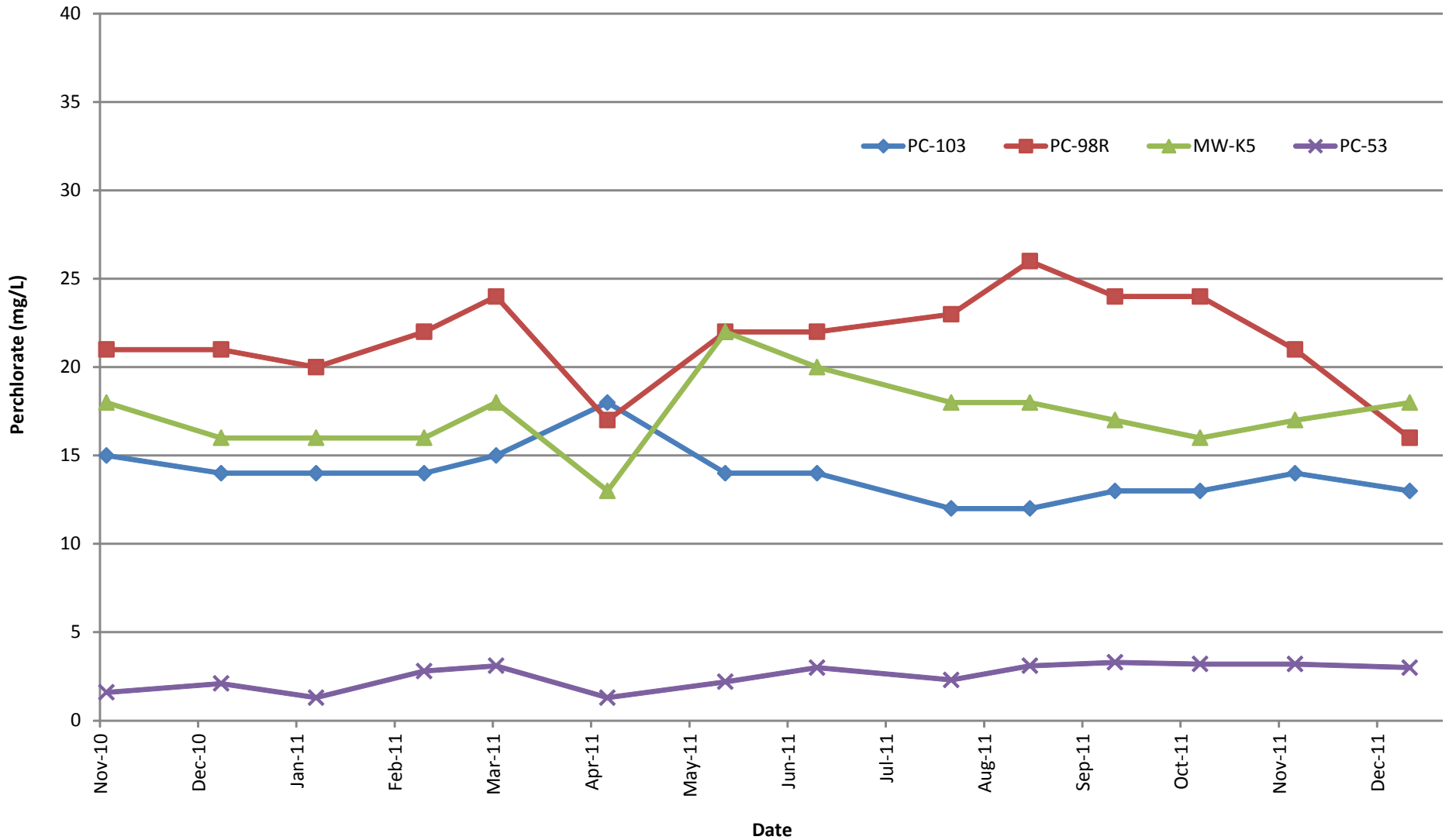
Figure

**20**



**City of Henderson WRF Well Line Perchlorate Concentration Trends**  
 Nevada Environmental Response Trust Site (NERT)  
 Henderson, Nevada

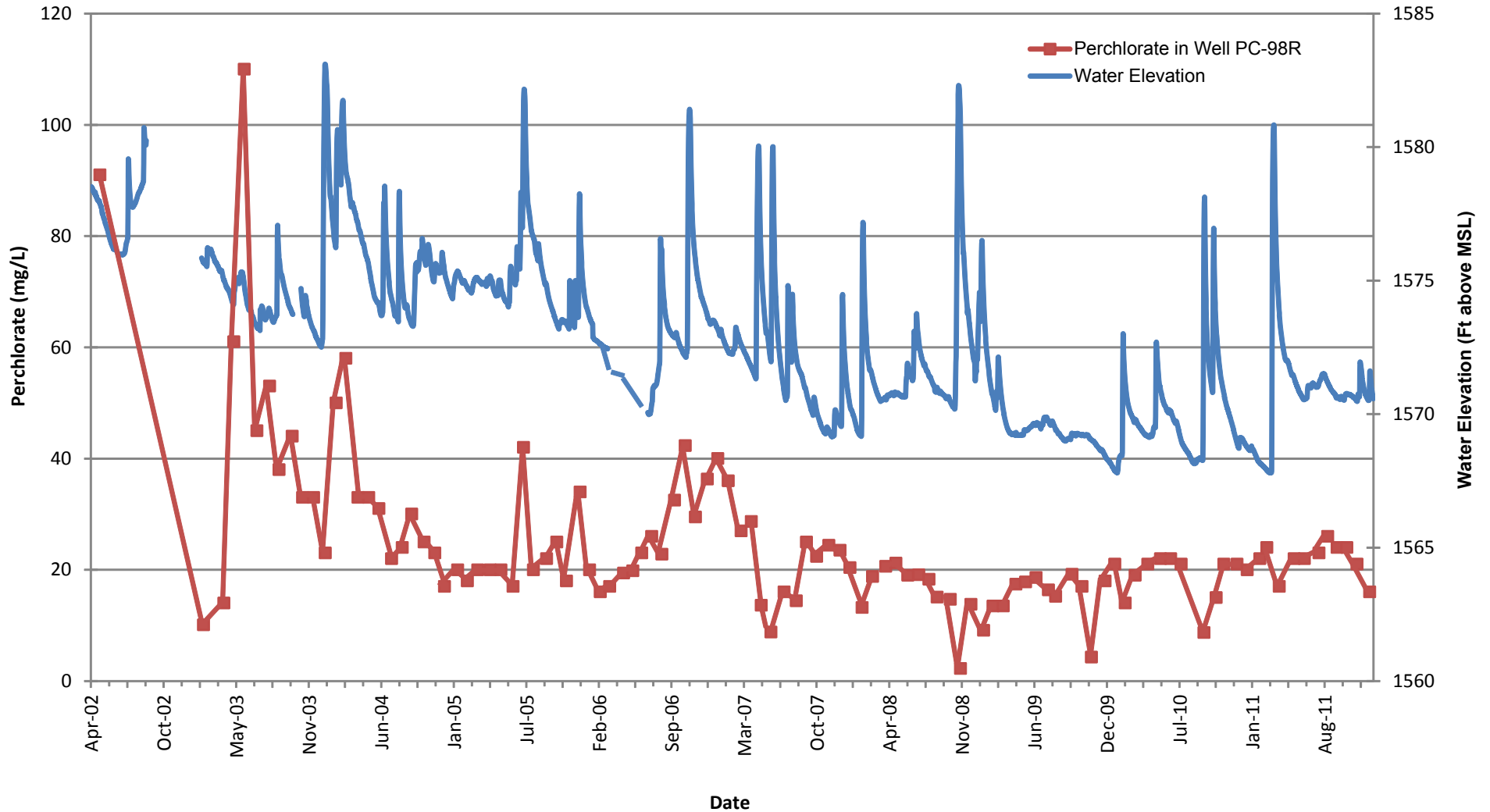
Figure



**City of Henderson WRF Well Line Perchlorate Concentration Trends, Nov 2010 - Dec 2011**  
 Nevada Environmental Response Trust Site (NERT)  
 Henderson, Nevada

Figure

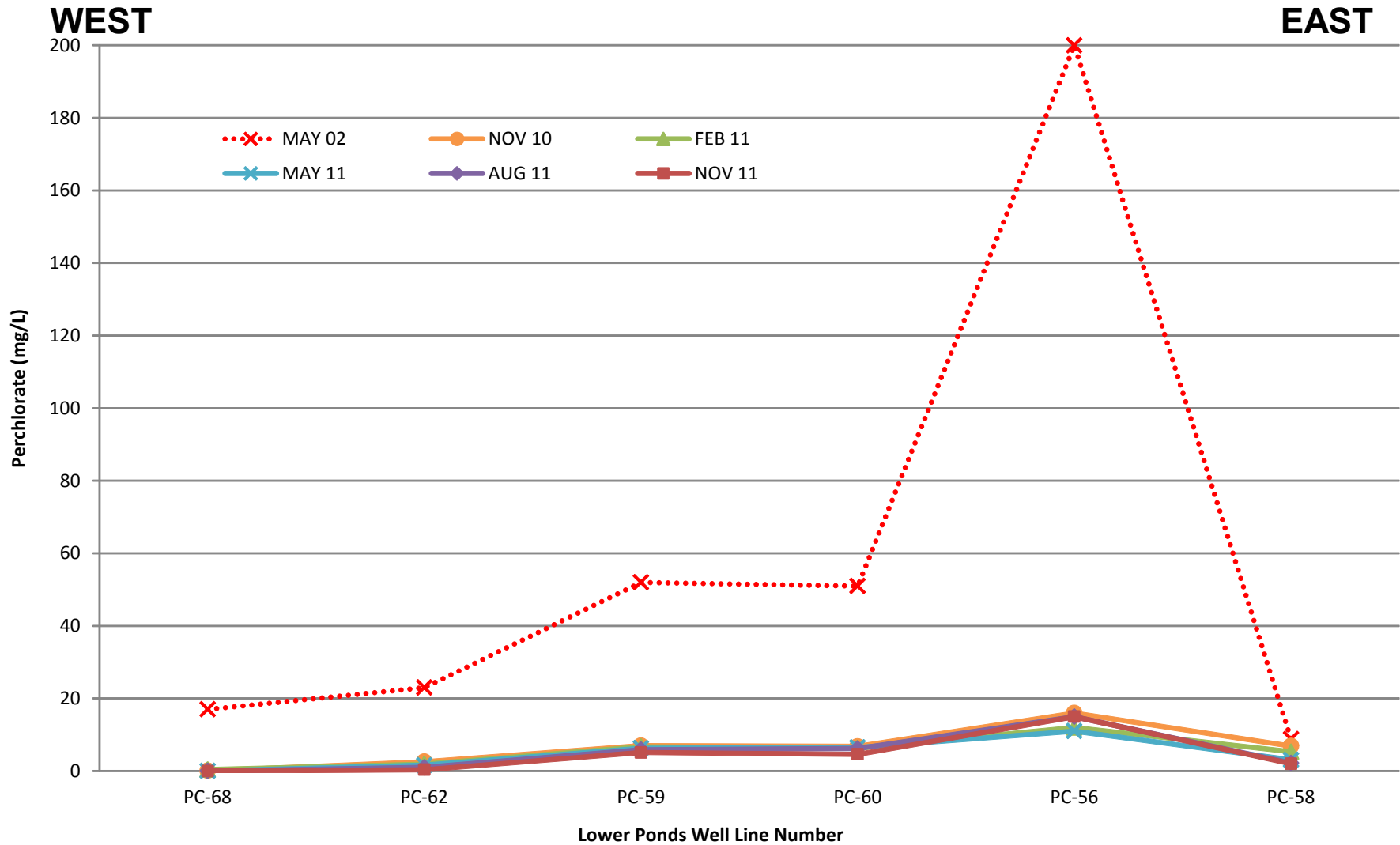
**21A**



**Well PC-98R Perchlorate Concentration vs. Water Elevation Trends**  
 Nevada Environmental Response Trust Site (NERT)  
 Henderson, Nevada

Figure

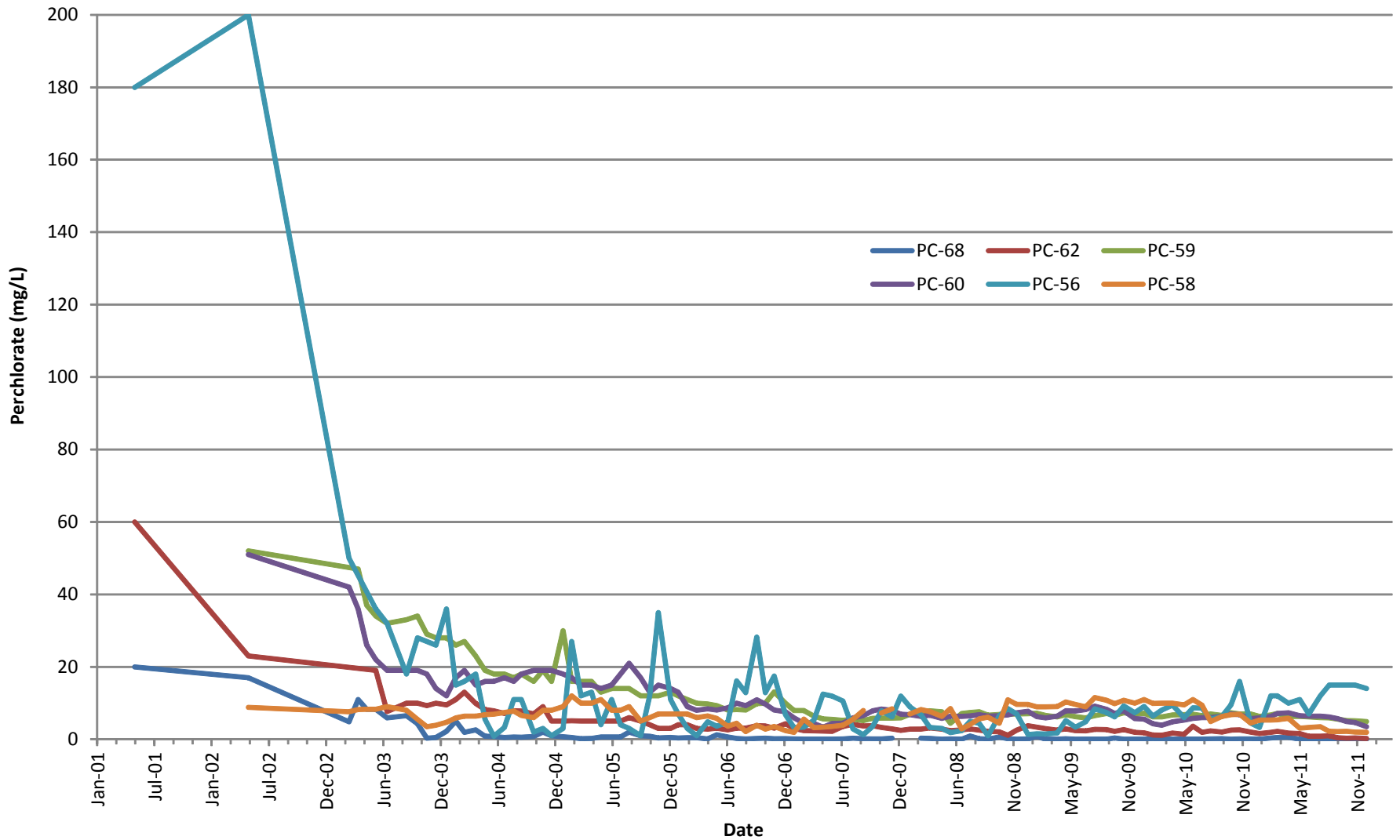
**22**



**Lower Ponds Well Line Transect Perchlorate Concentrations**  
 Nevada Environmental Response Trust Site (NERT)  
 Henderson, Nevada

Figure

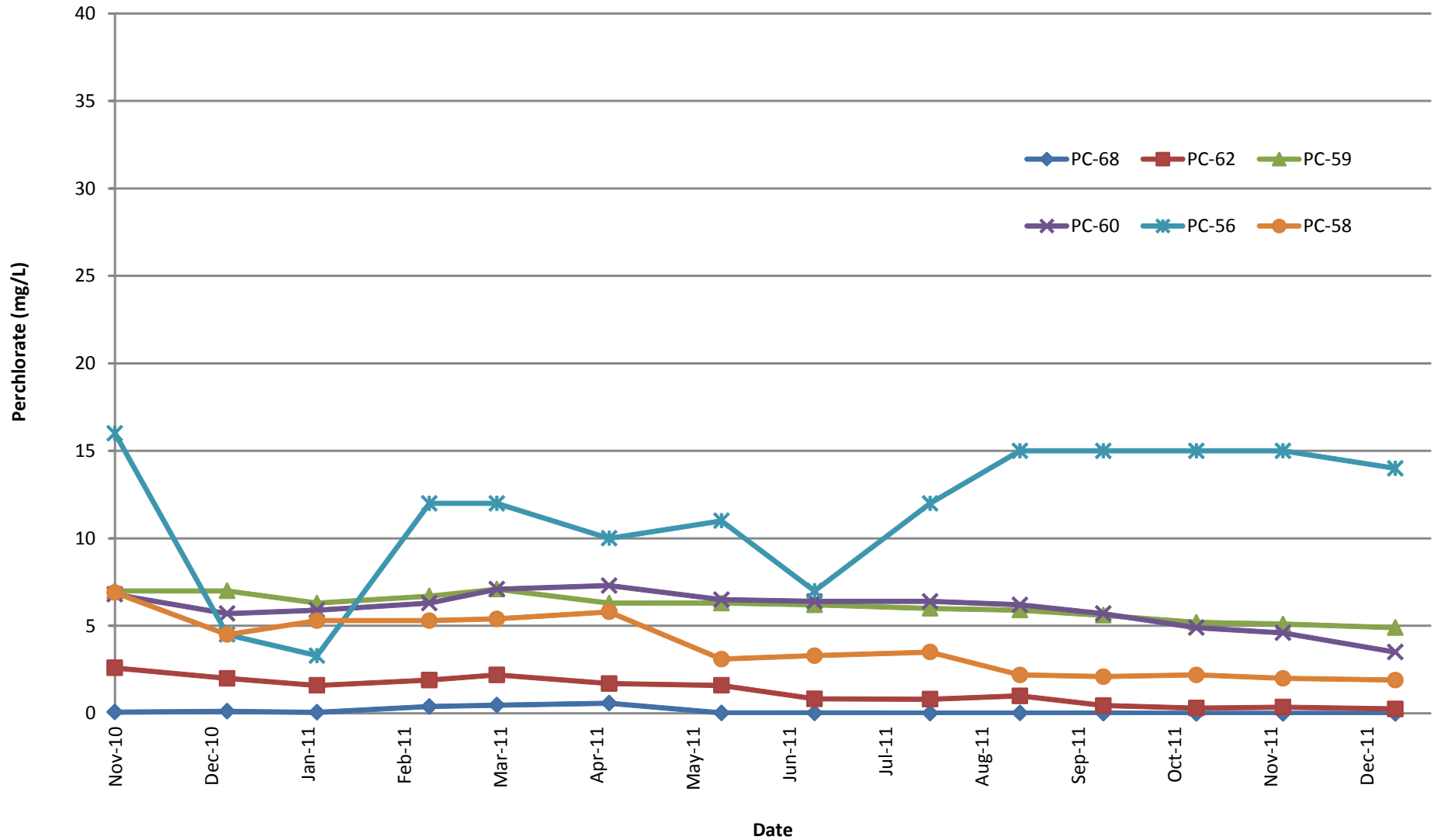
**23**



**Lower Ponds Well Line Perchlorate Concentration Trends**  
 Nevada Environmental Response Trust Site (NERT)  
 Henderson, Nevada

Figure

**24**



**Lower Ponds Well Line Perchlorate Concentration Trends, Nov 2010 - Dec 2011**  
 Nevada Environmental Response Trust Site (NERT)  
 Henderson, Nevada

Figure

**24A**

Drafter: RS

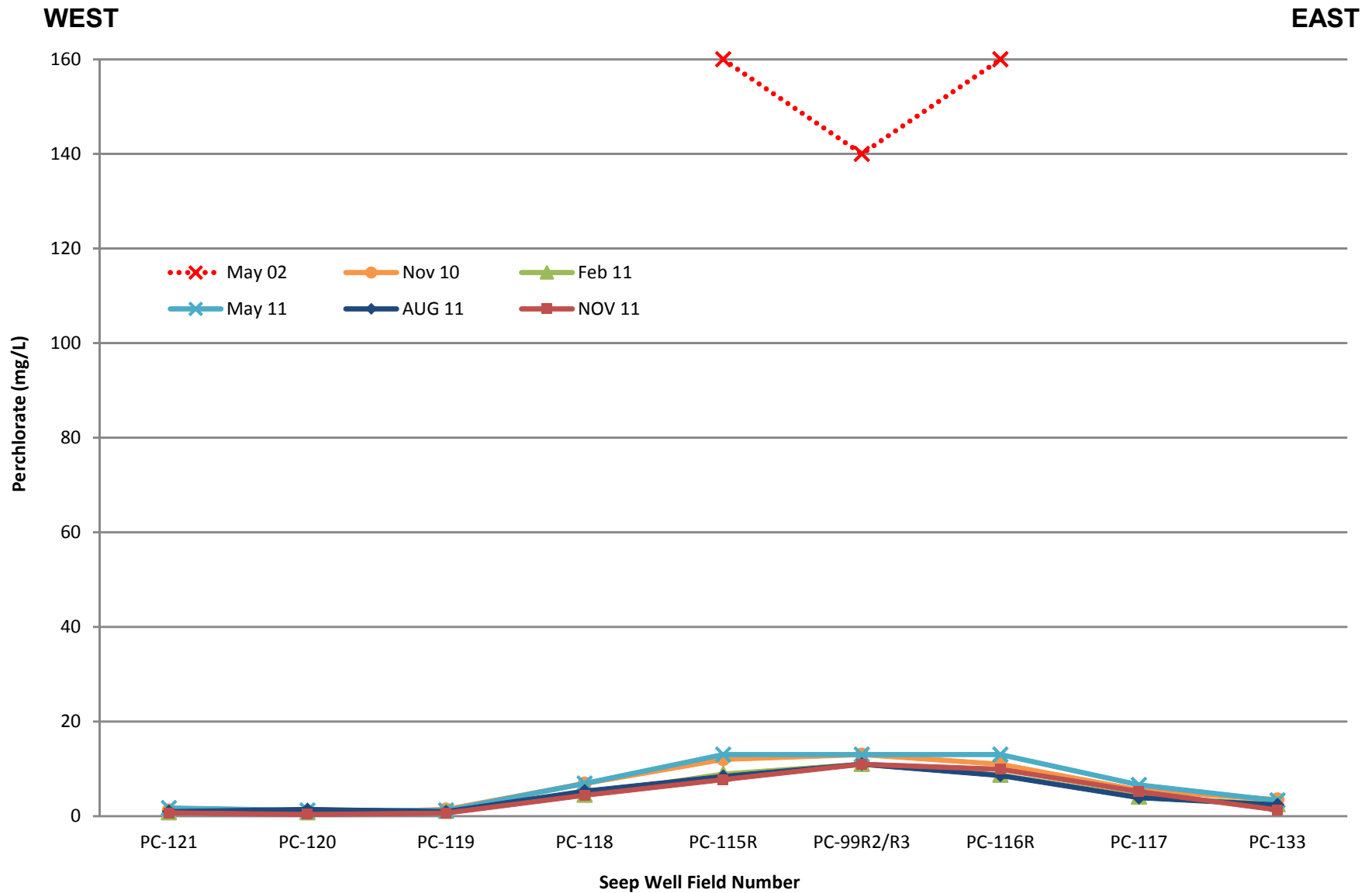
Date: 2/29/12

Contract Number: 21-29100G

Approved:

Revised:

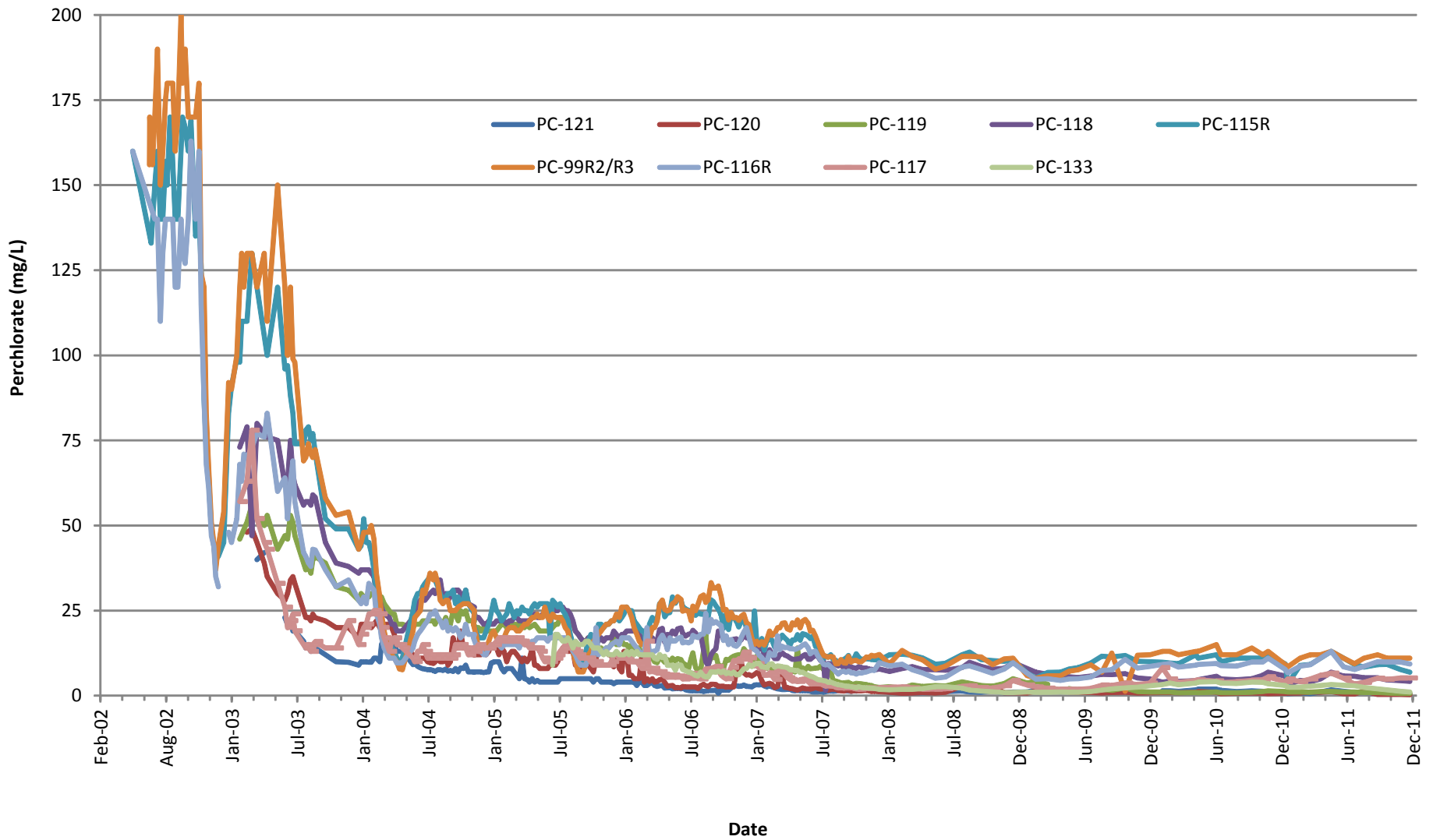




**Seep Well Field Transect Perchlorate Concentrations**  
 Nevada Environmental Response Trust Site (NERT)  
 Henderson, Nevada

Figure

**25**



**Seep Well Field Perchlorate Concentration Trends**  
 Nevada Environmental Response Trust Site (NERT)  
 Henderson, Nevada

Figure

**26**

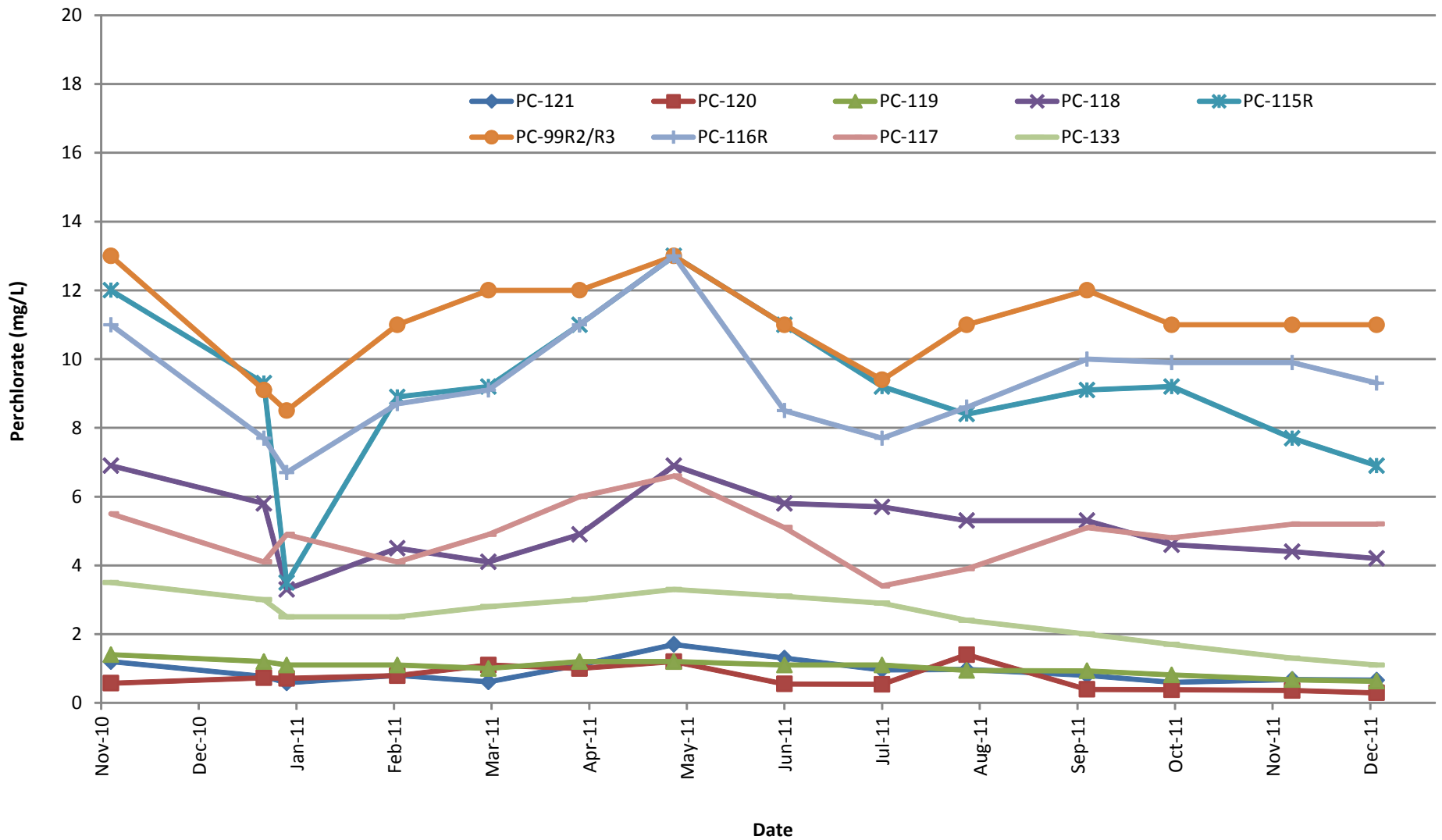
Drafter: RS

Date: 2/29/12

Contract Number: 21-29100G

Approved:

Revised:



**Seep Well Field Perchlorate Concentration Trends, Nov 2010 - Dec 2011**  
 Nevada Environmental Response Trust Site (NERT)  
 Henderson, Nevada

Figure

**26A**

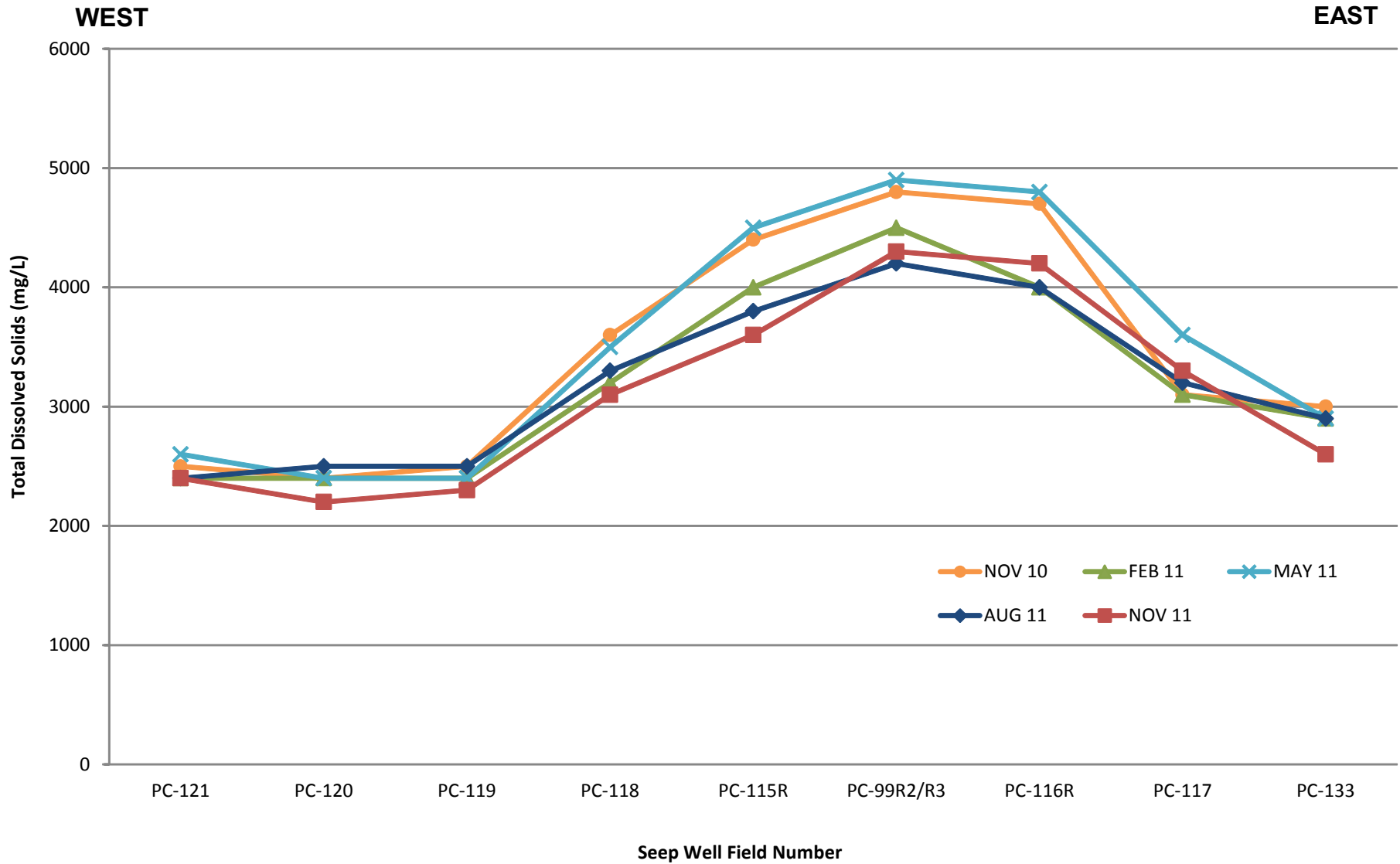
Drafter: RS

Date: 2/29/12

Contract Number: 21-29100G

Approved:

Revised:



**Seep Well Field Transect Total Dissolved Solids Concentrations**  
 Nevada Environmental Response Trust Site (NERT)  
 Henderson, Nevada

Figure

**27**

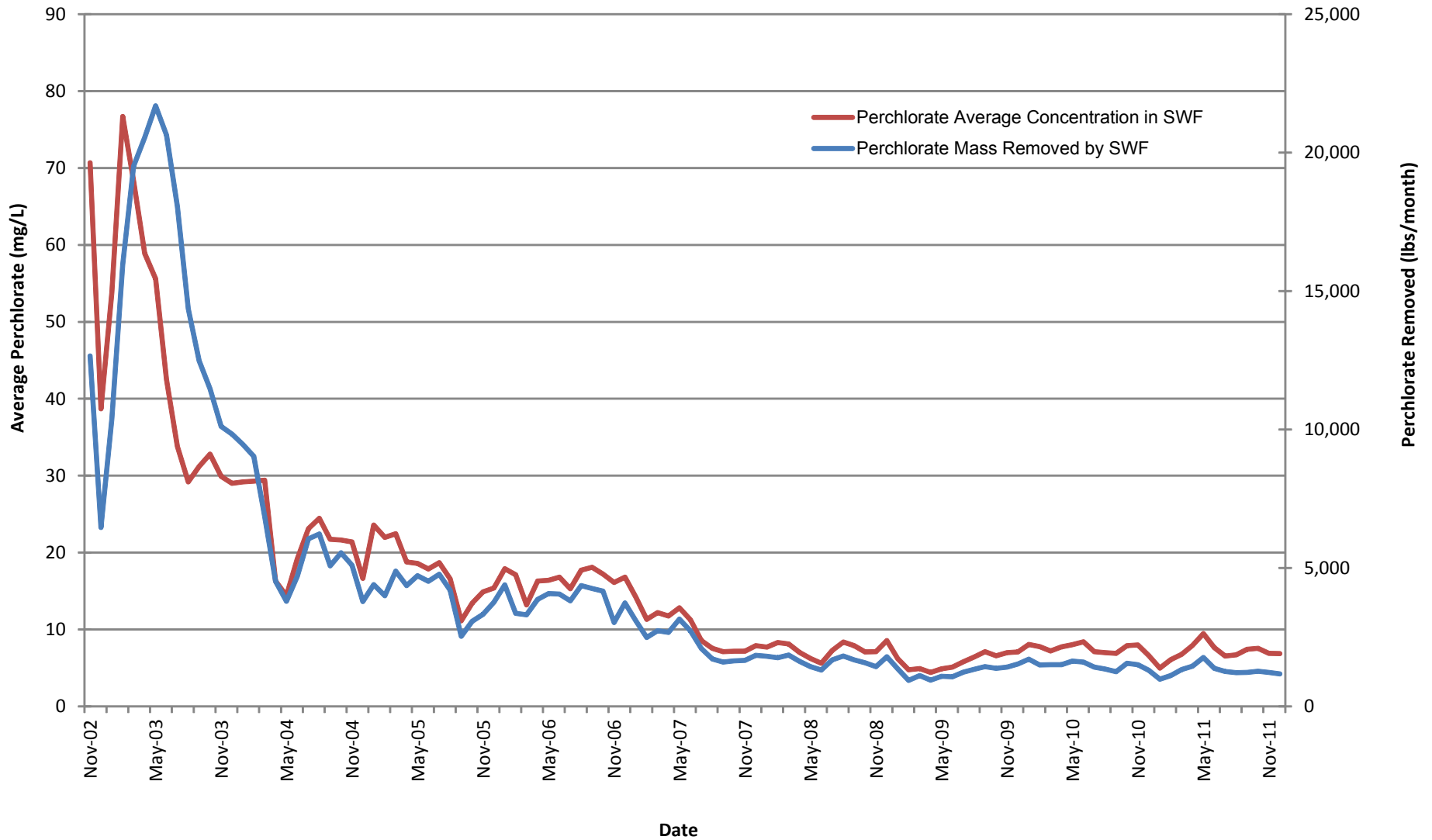
Drafter: RS

Date: 2/29/12

Contract Number: 21-29100G

Approved:

Revised:



**Seep Well Field Average Perchlorate Concentration and Mass Removed**  
 Nevada Environmental Response Trust Site (NERT)  
 Henderson, Nevada

Figure

**28**