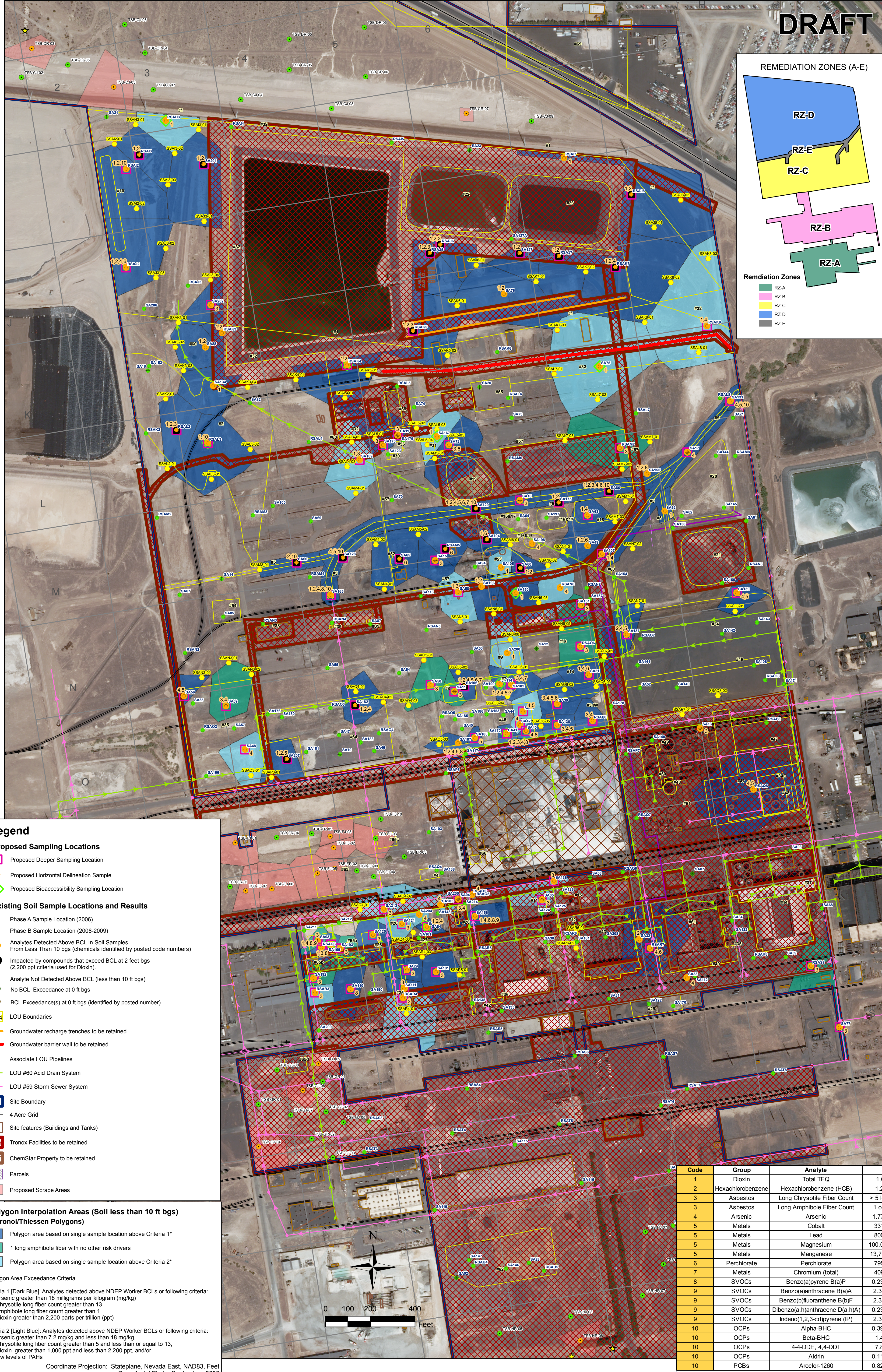
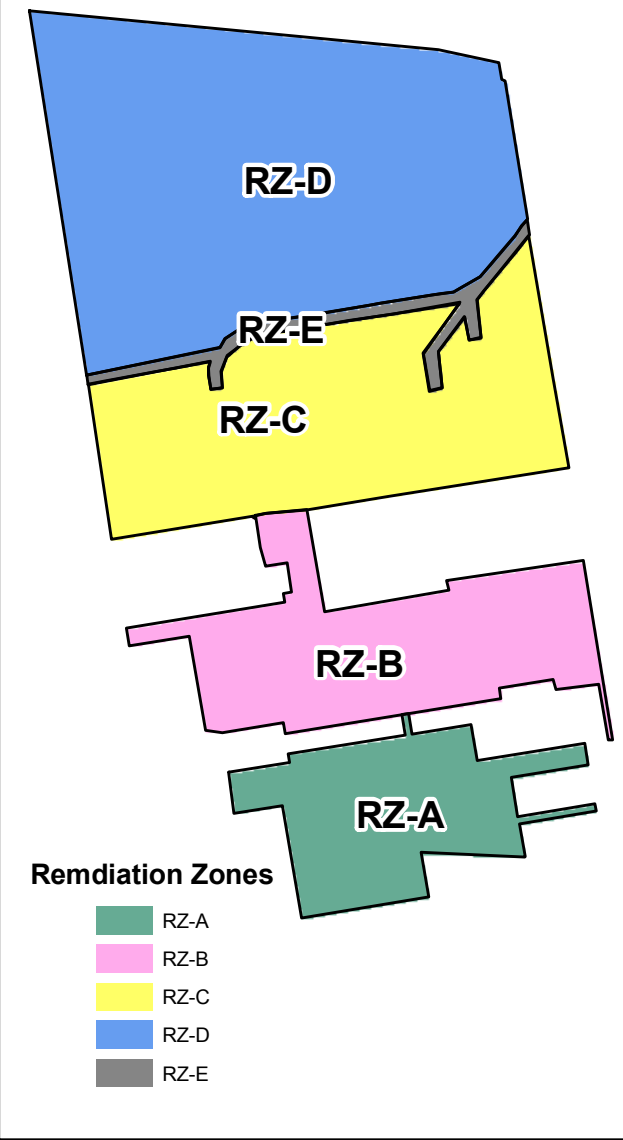


DRAFT

\\ng-oak1ng-GIS01\_Projects\2027\_Tronox\Phase\_B\Remediation\RZ\_Polygons\Figure\_1-1-RemediationZones-ALL\_R01.mxd Last Updated 3/17/2010 4:42:02 PM

REMEDIATION ZONES (A-E)



Legend

- Proposed Sampling Locations**
- Proposed Deeper Sampling Location
  - Proposed Horizontal Delineation Sample
  - Proposed Bioaccessibility Sampling Location
- Existing Soil Sample Locations and Results**
- Phase A Sample Location (2006)
  - Phase B Sample Location (2008-2009)
  - Analytes Detected Above BCL in Soil Samples From Less Than 10 bgs (chemicals identified by posted code numbers)
  - Impacted by compounds that exceed BCL at 2 feet bgs (2,200 ppt criteria used for Dioxin)
  - Analyte Not Detected Above BCL (less than 10 ft bgs)
  - No BCL Exceedance at 0 ft bgs
  - BCL Exceedance(s) at 0 ft bgs (identified by posted number)
- LOU Boundaries**
- Groundwater recharge trenches to be retained
  - Groundwater barrier wall to be retained
  - Associate LOU Pipelines
  - LOU #60 Acid Drain System
  - LOU #59 Storm Sewer System
- Site Boundary**
- 4 Acre Grid
  - Site features (Buildings and Tanks)
  - Tronox Facilities to be retained
  - ChemStar Property to be retained
  - Parcels
  - Proposed Scrape Areas
- Polygon Interpolation Areas (Soil less than 10 ft bgs) (Voronoi/Thiessen Polygons)**
- Polygon area based on single sample location above Criteria 1\*
  - 1 long amphibole fiber with no other risk drivers
  - Polygon area based on single sample location above Criteria 2\*
- \*Polygon Area Exceedance Criteria**
- Criteria 1 [Dark Blue]: Analytes detected above NDEP Worker BCLs or following criteria:  
 Arsenic greater than 18 milligrams per kilogram (mg/kg)  
 Chrysotile long fiber count greater than 13  
 Amphibole long fiber count greater than 1  
 Dioxin greater than 2,200 parts per trillion (ppt)
- Criteria 2 [Light Blue]: Analytes detected above NDEP Worker BCLs or following criteria:  
 Arsenic greater than 7.2 mg/kg and less than 18 mg/kg  
 Chrysotile long fiber count greater than 5 and less than or equal to 13,  
 Dioxin greater than 1,000 ppt and less than 2,200 ppt, and/or  
 low levels of PAHs
- Coordinate Projection: Stateplane, Nevada East, NAD83, Feet  
 Base Aerial Photo: September, 2008

Code	Group	Analyte	BCL
1	Dioxin	Total TEQ	1,000 ppt
2	Hexachlorobenzene	Hexachlorobenzene (HCB)	1.2 mg/kg
3	Asbestos	Long Chrysotile Fiber Count	> 5 long fibers
3	Asbestos	Long Amphibole Fiber Count	1 or greater
4	Arsenic	Arsenic	1.77 mg/kg*
5	Metals	Cobalt	331 mg/kg
5	Metals	Lead	800 mg/kg
5	Metals	Magnesium	100,000 mg/kg
5	Metals	Manganese	13,700 mg/kg
6	Perchlorate	Perchlorate	795 mg/kg
7	Metals	Chromium (total)	409 mg/kg
8	SVOCs	Benzo(a)pyrene B(a)P	0.234 mg/kg
9	SVOCs	Benzo(a)anthracene B(a)A	2.34 mg/kg
9	SVOCs	Benzo(b)fluoranthene B(b)F	2.34 mg/kg
9	SVOCs	Dibenzo(a,h)anthracene D(a,h)A	0.234 mg/kg
9	SVOCs	Indeno(1,2,3-cd)pyrene (IP)	2.34 mg/kg
10	OCPs	Alpha-BHC	0.399 mg/kg
10	OCPs	Beta-BHC	1.4 mg/kg
10	OCPs	4,4-DDE, 4,4-DDT	7.8 mg/kg
10	OCPs	Aldrin	0.113 mg/kg
10	PCBs	Aroclor-1260	0.826 mg/kg

\* BCL for arsenic is less than background polygons for arsenic >7.2 in upper 10 feet

**EXCAVATION POLYGONS AND NATURE OF CONTAMINATION**  
 Tronox LLC  
 Henderson, Nevada

SCALE: 1 in = 200 ft  
 DATE: 03/29/10  
 PROJECT NUMBER: 2027.01

DESIGNED BY:	NO.:	REVISIONS	DATE:	BY:
DRAWN BY:		DESCRIPTION:		
CHECKED BY:				
APPROVED BY:				

**northgate**  
 environmental management, inc.  
**TRONOX**  
<http://www.ngem.com>