

# TECHNICAL MEMORANDUM

---

**To:** Nevada Environmental Response Trust

---

**Cc:** Nevada Division of Environmental Protection  
United States Environmental Protection Agency

---

**From:** Chris Hayes and Dana Grady

---

**Date:** July 3, 2024

---

**Subject:** Unit 4 Source Area In-Situ Bioremediation Treatability Study Monthly Progress Report

---

At the direction of the Nevada Environmental Response Trust (NERT or Trust), Tetra Tech, Inc. (Tetra Tech) has prepared this memorandum to summarize Tetra Tech's progress during May 2024 toward successfully implementing the Unit 4 Source Area In-Situ Bioremediation (ISB) Treatability Study.

## Task Progress Update: May 2024

### Task M21 – Unit 4 Source Area ISB Treatability Study

- Current Status
  - Operations and maintenance activities for Phase 2 of the Unit 4 Source Area ISB Treatability Study began on September 8, 2023 and were completed on April 9, 2024. Following system shutdown, system decommissioning activities, consisting of decommissioning and demobilization of the extraction system, office trailer, electrical components, and frac tanks, were completed in May 2024. Tetra Tech is coordinating with Clean Harbors for the final demobilization of the injection system.
  - The study has now transitioned into the post-treatment evaluation phase to evaluate long-term changes in contaminant concentrations and geochemical conditions following system shut down. The post-treatment effectiveness monitoring program will consist of two quarterly sampling events scheduled to be completed in June 2024 and September 2024. A layout map and construction details of all injection, monitoring, and extraction wells are provided on **Figure 1** and in **Table 1**, respectively. Results for these sampling events will be provided in future monthly progress reports as sampling activities are completed and data becomes available.
- Schedule and Progress Updates
  - Two quarterly post-treatment effectiveness monitoring events are scheduled to be performed in June 2024 and September 2024 in accordance with the Work Plan Addendum.
- Health and Safety
  - There were no health and safety incidents related to Task M21 in May 2024.

## CERTIFICATION

---

### Unit 4 Source Area In-Situ Bioremediation Treatability Study Monthly Progress Report

#### Nevada Environmental Response Trust Site (Former Tronox LLC Site) Henderson, Nevada

#### Nevada Environmental Response Trust (NERT) Representative Certification

I certify that this document and all attachments submitted to the Division were prepared at the request of, or under the direction or supervision of NERT. Based on my own involvement and/or my inquiry of the person or persons who manage the systems(s) or those directly responsible for gathering the information or preparing the document, or the immediate supervisor of such person(s), the information submitted and provided herein is, to the best of my knowledge and belief, true, accurate, and complete in all material respects.

Office of the Nevada Environmental Response Trust

Le Petomane XXVII, not individually, but solely in its representative capacity as the Nevada Environmental Response Trust Trustee

**Signature:**  not individually, but solely in his representative capacity as President of the Nevada Environmental Response Trust Trustee

**Name:** Jay A. Steinberg, not individually, but solely in his representative capacity as President of the Nevada Environmental Response Trust Trustee

**Title:** Solely as President and not individually

**Company:** Le Petomane XXVII, Inc., not individually, but solely in its representative capacity as the Nevada Environmental Response Trust Trustee

**Date:** 7/3/24

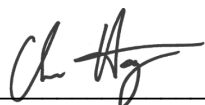
## CERTIFICATION

---

I hereby certify that I am responsible for the services described in this document and for the preparation of this document. The services described in this document have been prepared in a manner consistent with the current standards of the profession, and to the best of my knowledge, comply with all applicable federal, state, and local statutes, regulations, and ordinances. I hereby certify that all laboratory analytical data was generated by a laboratory certified by the NDEP for each constituent and media presented herein.

***Description of Services Provided:***

Prepared Unit 4 Source Area In-Situ Bioremediation Treatability Study Monthly Progress Report.



\_\_\_\_\_  
**Christopher Hayes, CEM**  
Environmental Engineer  
Tetra Tech, Inc.

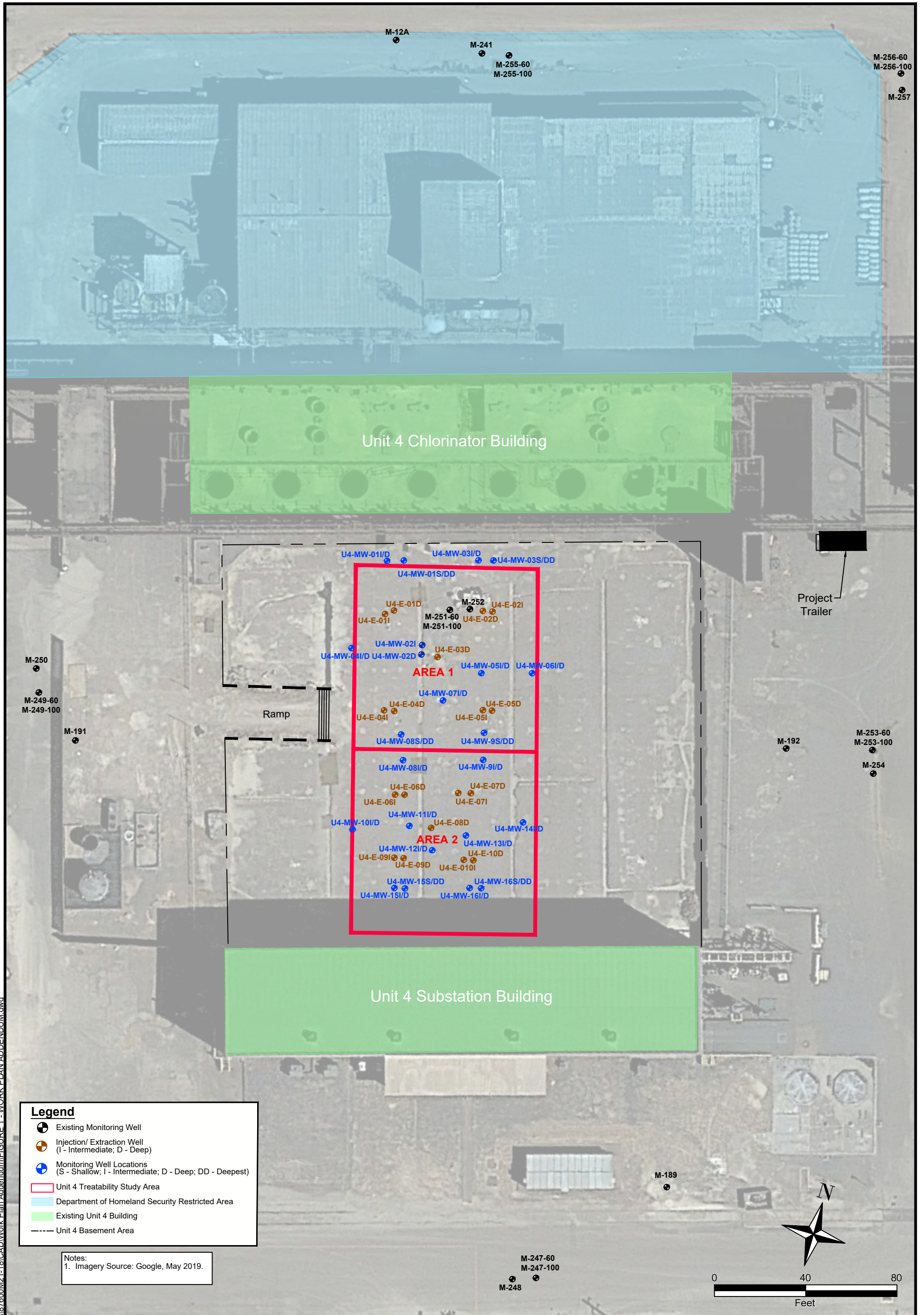
July 3, 2024

\_\_\_\_\_  
Date

Nevada CEM Certificate Number: EM2499  
Nevada CEM Expiration Date: December 15, 2024

**Figure**





**Legend**

- Existing Monitoring Well
- ⊕ Injection/ Extraction Well (I - Intermediate, D - Deep)
- ⊕ Monitoring Well Locations (S - Shallow; I - Intermediate; D - Deep; DD - Deepest)
- ▭ Unit 4 Treatability Study Area
- ▭ Department of Homeland Security Restricted Area
- ▭ Existing Unit 4 Building
- Unit 4 Basement Area

Notes:  
1. Imagery Source: Google, May 2019.

NEVADA ENVIRONMENTAL RESPONSE TRUST SITE  
UNIT 4 SOURCE AREA IN-SITU BIOREMEDIATION TREATABILITY STUDY  
HENDERSON, NEVADA

**INJECTION/ EXTRACTION AND MONITORING WELL LAYOUT**

Project No.: 117-7502021-M21  
Date: May 10, 2022  
Designed By: AC

Figure No.  
**1**

**TETRA TECH**

www.tetrattech.com  
150 S. 4th Street, Unit A  
Henderson, Nevada 89015  
Phone: (702) 854-2293

\\its318fs3.tl.local\CES\Projects\87600\M21-18\CAD\Work Plan Addendum\FIGURE 1 - WORK PLAN ADDENDUM.dwg



## Table

Table 1  
Well Construction Details  
Unit 4 Source Area In-Situ Bioremediation Treatability Study

Well ID	Screened Lithology	Northing	Easting	Ground Surface Elevation <sup>1</sup>	Top of Casing Elevation	Construction Type	Casing Material	Screen Material	Slot Size	Filter Pack Gradation	Borehole Diameter	Borehole Total Depth	Well Diameter	Nominal Screen Length	Well Total Depth	Bottom of Screen	Top of Screen
				feet amsl	feet amsl				inches								
U4-E-01D	UMCf	26717332.49	828215.74	1805.50	1805.11	Single	Schedule 80 PVC	Stainless Steel	0.010	#2/16	8	115.0	4	15	110.3	94.7	109.7
U4-E-01I	UMCf	26717330.42	828212.11	1805.40	1805.15	Single	Schedule 80 PVC	Stainless Steel	0.010	#2/16	8	92.0	4	15	90.3	74.6	89.6
U4-E-02D	UMCf	26717338.47	828258.40	1805.55	1804.99	Single	Schedule 80 PVC	Stainless Steel	0.010	#2/16	8	115.0	4	15	110.3	94.4	109.4
U4-E-02I	UMCf	26717338.14	828254.24	1805.51	1804.99	Single	Schedule 80 PVC	Stainless Steel	0.010	#2/16	8	92.0	4	15	90.3	74.4	89.4
U4-E-04D	UMCf	26717288.90	828222.53	1805.49	1804.95	Single	Schedule 80 PVC	Stainless Steel	0.010	#2/16	8	115.0	4	15	110.3	95.0	110.0
U4-E-03D	UMCf	26717310.37	828241.13	1805.49	1804.94	Single	Schedule 80 PVC	Stainless Steel	0.010	#2/16	8	113.0	4	15	111.1	110.1	95.1
U4-E-04I	UMCf	26717288.51	828217.91	1805.64	1805.03	Single	Schedule 80 PVC	Stainless Steel	0.010	#2/16	8	92.0	4	15	90.3	75.0	90.0
U4-E-05D	UMCf	26717295.64	828264.86	1805.48	1804.95	Single	Schedule 80 PVC	Stainless Steel	0.010	#2/16	8	115.0	4	15	110.3	95.0	110.0
U4-E-05I	UMCf	26717295.15	828260.95	1805.58	1804.72	Single	Schedule 80 PVC	Stainless Steel	0.010	#2/16	8	92.0	4	15	90.3	75.0	90.0
U4-E-06D	UMCf	26717253.44	828232.43	1805.44	1804.74	Single	Schedule 80 PVC	Stainless Steel	0.010	#2/16	8	112.0	4	15	111.1	110.1	95.1
U4-E-06I	UMCf	26717252.90	828228.29	1805.47	1805.04	Single	Schedule 80 PVC	Stainless Steel	0.010	#2/16	8	92.5	4	15	89.2	88.2	73.2
U4-E-07D	UMCf	26717258.48	828261.02	1805.62	1805.31	Single	Schedule 80 PVC	Stainless Steel	0.010	#2/16	8	111.5	4	15	110.6	109.6	94.6
U4-E-07I	UMCf	26717257.68	828255.56	1805.62	1805.16	Single	Schedule 80 PVC	Stainless Steel	0.010	#2/16	8	92.0	4	15	90.7	89.7	74.7
U4-E-08D	UMCf	26717240.82	828246.11	1805.45	1804.91	Single	Schedule 80 PVC	Stainless Steel	0.010	#2/16	8	120.0	4	15	110.6	109.6	94.6
U4-E-09D	UMCf	26717225.92	828236.22	1805.45	1804.91	Single	Schedule 80 PVC	Stainless Steel	0.010	#2/16	8	112.0	4	15	110.5	109.5	94.5
U4-E-09I	UMCf	26717225.46	828232.18	1805.47	1805.14	Single	Schedule 80 PVC	Stainless Steel	0.010	#2/16	8	93.3	4	15	90.9	89.9	74.9
U4-E-10D	UMCf	26717229.55	828266.50	1805.66	1805.28	Single	Schedule 80 PVC	Stainless Steel	0.010	#2/16	8	112.0	4	15	110.5	109.5	94.5
U4-E-10I	UMCf	26717229.15	828262.34	1805.71	1805.37	Single	Schedule 80 PVC	Stainless Steel	0.010	#2/16	8	92.0	4	15	90.2	89.2	74.2
U4-MW-01I	UMCf	26717353.59	828209.51	1805.57	1805.14	Dual-Nested	Schedule 80 PVC	Stainless Steel	0.010	#2/16	11	108.0	2	10	86.7	86.7	76.7
U4-MW-01D	UMCf	26717353.51	828209.25	1805.57	1805.10		Schedule 80 PVC	Stainless Steel	0.010	#2/16					106.7	106.7	96.7
U4-MW-01S	UMCf	26717354.83	828216.42	1805.57	1805.02	Dual-Nested	Schedule 80 PVC	Stainless Steel	0.010	#2/16	11	131.0	2	10	64.7	64.7	54.7
U4-MW-01DD	UMCf	26717354.86	828216.87	1805.57	1805.09		Schedule 80 PVC	Stainless Steel	0.010	#2/16					129.9	129.9	119.9
U4-MW-02D	UMCf	26717315.33	828230.47	1805.50	1805.07	Single	Schedule 80 PVC	Stainless Steel	0.010	#2/16	8	115.0	4	15	110.3	95.0	110.0
U4-MW-02I	UMCf	26717319.45	828230.17	1805.47	1805.07	Single	Schedule 80 PVC	Stainless Steel	0.010	#2/16	8	92.0	4	15	90.3	75.0	90.0
U4-MW-03I	UMCf	26717359.79	828248.76	1805.61	1805.17	Dual-Nested	Schedule 80 PVC	Stainless Steel	0.010	#2/16	11	108.3	2	10	86.6	86.6	76.6
U4-MW-03D	UMCf	26717360.01	828249.20	1805.61	1805.18		Schedule 80 PVC	Stainless Steel	0.010	#2/16					106.6	106.6	96.6
U4-MW-03S	UMCf	26717360.79	828255.35	1805.56	1805.19	Dual-Nested	Schedule 80 PVC	Stainless Steel	0.010	#2/16	11	131.3	2	10	64.5	64.5	54.5
U4-MW-03DD	UMCf	26717360.84	828255.62	1805.56	1805.20		Schedule 80 PVC	Stainless Steel	0.010	#2/16					129.7	129.7	119.7
U4-MW-04I	UMCf	26717313.50	828199.89	1805.49	1805.13	Dual-Nested	Schedule 80 PVC	Stainless Steel	0.010	#2/16	11	108.5	2	10	86.8	86.8	76.8
U4-MW-04D	UMCf	26717313.36	828199.55	1805.49	1805.15		Schedule 80 PVC	Stainless Steel	0.010	#2/16					107.0	107.0	97.0
U4-MW-05I	UMCf	26717311.18	828257.53	1805.52	1805.06	Dual-Nested	Schedule 80 PVC	Stainless Steel	0.010	#2/16	11	108.0	2	10	86.6	86.6	76.6
U4-MW-05D	UMCf	26717311.18	828257.89	1805.52	1805.05		Schedule 80 PVC	Stainless Steel	0.010	#2/16					108.2	108.2	98.2
U4-MW-06I	UMCf	26717314.46	828279.53	1805.52	1805.21	Dual-Nested	Schedule 80 PVC	Stainless Steel	0.010	#2/16	11	108.3	2	10	86.5	86.5	76.5
U4-MW-06D	UMCf	26717314.51	828279.82	1805.52	1805.20		Schedule 80 PVC	Stainless Steel	0.010	#2/16					107.1	107.1	97.1
U4-MW-07I	UMCf	26717296.98	828242.85	1805.36	1805.16	Dual-Nested	Schedule 80 PVC	Stainless Steel	0.010	#2/16	11	109.2	2	10	86.8	86.8	76.8
U4-MW-07D	UMCf	26717296.68	828242.80	1805.36	1805.01		Schedule 80 PVC	Stainless Steel	0.010	#2/16					106.5	106.5	96.5
U4-MW-08I	UMCf	26717268.25	828229.36	1805.45	1804.97	Dual-Nested	Schedule 80 PVC	Stainless Steel	0.010	#2/16	11	108.0	2	10	88.0	88.0	78.0
U4-MW-08D	UMCf	26717268.30	828229.62	1805.45	1804.99		Schedule 80 PVC	Stainless Steel	0.010	#2/16					108.6	108.6	98.6
U4-MW-08S	UMCf	26717279.33	828226.78	1805.47	1804.94	Dual-Nested	Schedule 80 PVC	Stainless Steel	0.010	#2/16	11	131.2	2	10	64.9	64.9	54.9
U4-MW-08DD	UMCf	26717279.35	828227.22	1805.47	1804.95		Schedule 80 PVC	Stainless Steel	0.010	#2/16					129.8	129.8	119.8
U4-MW-09I	UMCf	26717273.70	828264.04	1805.62	1805.22	Dual-Nested	Schedule 80 PVC	Stainless Steel	0.010	#2/16	11	108.0	2	10	86.8	86.8	76.8
U4-MW-09D	UMCf	26717273.73	828264.40	1805.62	1805.20		Schedule 80 PVC	Stainless Steel	0.010	#2/16					106.9	106.9	96.9
U4-MW-09S	UMCf	26717285.44	828262.62	1805.55	1805.12	Dual-Nested	Schedule 80 PVC	Stainless Steel	0.010	#2/16	11	132.0	2	10	65.3	65.3	55.3
U4-MW-09DD	UMCf	26717285.52	828263.00	1805.55	1805.12		Schedule 80 PVC	Stainless Steel	0.010	#2/16					129.8	129.8	119.8
U4-MW-10I	UMCf	26717234.83	828212.05	1805.55	1805.10	Dual-Nested	Schedule 80 PVC	Stainless Steel	0.010	#2/16	11	109.0	2	10	87.1	87.1	77.1
U4-MW-10D	UMCf	26717235.18	828212.26	1805.55	1805.07		Schedule 80 PVC	Stainless Steel	0.010	#2/16					106.9	106.9	96.9
U4-MW-11I	UMCf	26717240.19	828236.42	1805.41	1805.03	Dual-Nested	Schedule 80 PVC	Stainless Steel	0.010	#2/16	11	109.0	2	10	87.0	87.0	77.0
U4-MW-11D	UMCf	26717240.23	828236.77	1805.41	1804.96		Schedule 80 PVC	Stainless Steel	0.010	#2/16					107.4	107.4	97.4
U4-MW-12I	UMCf	26717231.25	828247.87	1805.47	1805.11	Dual-Nested	Schedule 80 PVC	Stainless Steel	0.010	#2/16	11	108.0	2	10	86.8	86.8	76.8
U4-MW-12D	UMCf	26717231.22	828248.29	1805.47	1805.12		Schedule 80 PVC	Stainless Steel	0.010	#2/16					107.1	107.1	97.1
U4-MW-13I	UMCf	26717242.66	828261.00	1805.64	1805.28	Dual-Nested	Schedule 80 PVC	Stainless Steel	0.010	#2/16	11	109.0	2	10	87.1	87.1	77.1
U4-MW-13D	UMCf	26717242.70	828261.37	1805.64	1805.35		Schedule 80 PVC	Stainless Steel	0.010	#2/16					108.2	108.2	98.2
U4-MW-14I	UMCf	26717249.26	828285.32	1805.43	1805.13	Dual-Nested	Schedule 80 PVC	Stainless Steel	0.010	#2/16	11	109.0	2	10	87.3	87.3	77.3
U4-MW-14D	UMCf	26717249.24	828285.84	1805.43	1805.05		Schedule 80 PVC	Stainless Steel	0.010	#2/16					107.3	107.3	97.3
U4-MW-15I	UMCf	26717212.34	828233.91	1805.48	1805.03	Dual-Nested	Schedule 80 PVC	Stainless Steel	0.010	#2/16	11	109.0	2	10	86.8	86.8	76.8
U4-MW-15D	UMCf	26717212.35	828234.41	1805.48	1804.97		Schedule 80 PVC	Stainless Steel	0.010	#2/16					106.0	106.0	96.0
U4-MW-15S	UMCf	26717212.89	828238.61	1805.44	1805.05	Dual-Nested	Schedule 80 PVC	Stainless Steel	0.010	#2/16	11	132.0	2	10	64.8	64.8	54.8
U4-MW-15DD	UMCf	26717212.87	828239.01	1805.44	1804.98		Schedule 80 PVC	Stainless Steel	0.010	#2/16					130.3	130.3	120.3
U4-MW-16I	UMCf	26717217.25	828266.62	1805.68	1805.36	Dual-Nested	Schedule 80 PVC	Stainless Steel	0.010	#2/16	11	108.5	2	10	87.0	87.0	77.0
U4-MW-16D	UMCf	26717217.40	828266.90	1805.68	1805.27		Schedule 80 PVC	Stainless Steel	0.010	#2/16					106.8	106.8	96.8
U4-MW-16S	UMCf	26717217.87	828271.70	1805.59	1805.24	Dual-Nested	Schedule 80 PVC	Stainless Steel	0.010	#2/16	11	131.0	2	10	64.8	64.8	54.8
U4-MW-16DD	UMCf	26717218.04	828271.95	1805.59	1805.32		Schedule 80 PVC	Stainless Steel	0.010	#2/16					130.8	130.8	120.8

Notes

- amsl - above mean sea level
- bgs - below ground surface
- bTOC - below top of casing
- PVC - polyvinyl chloride
- UMCf - Upper Muddy Creek formation
- 1. Ground surface refers to the concrete floor of the Unit 4 basement, which is approximately 8 feet below the surrounding grade.
- 2. Well names including E indicate an extraction/injection well. Well names including MW indicate a monitoring well.