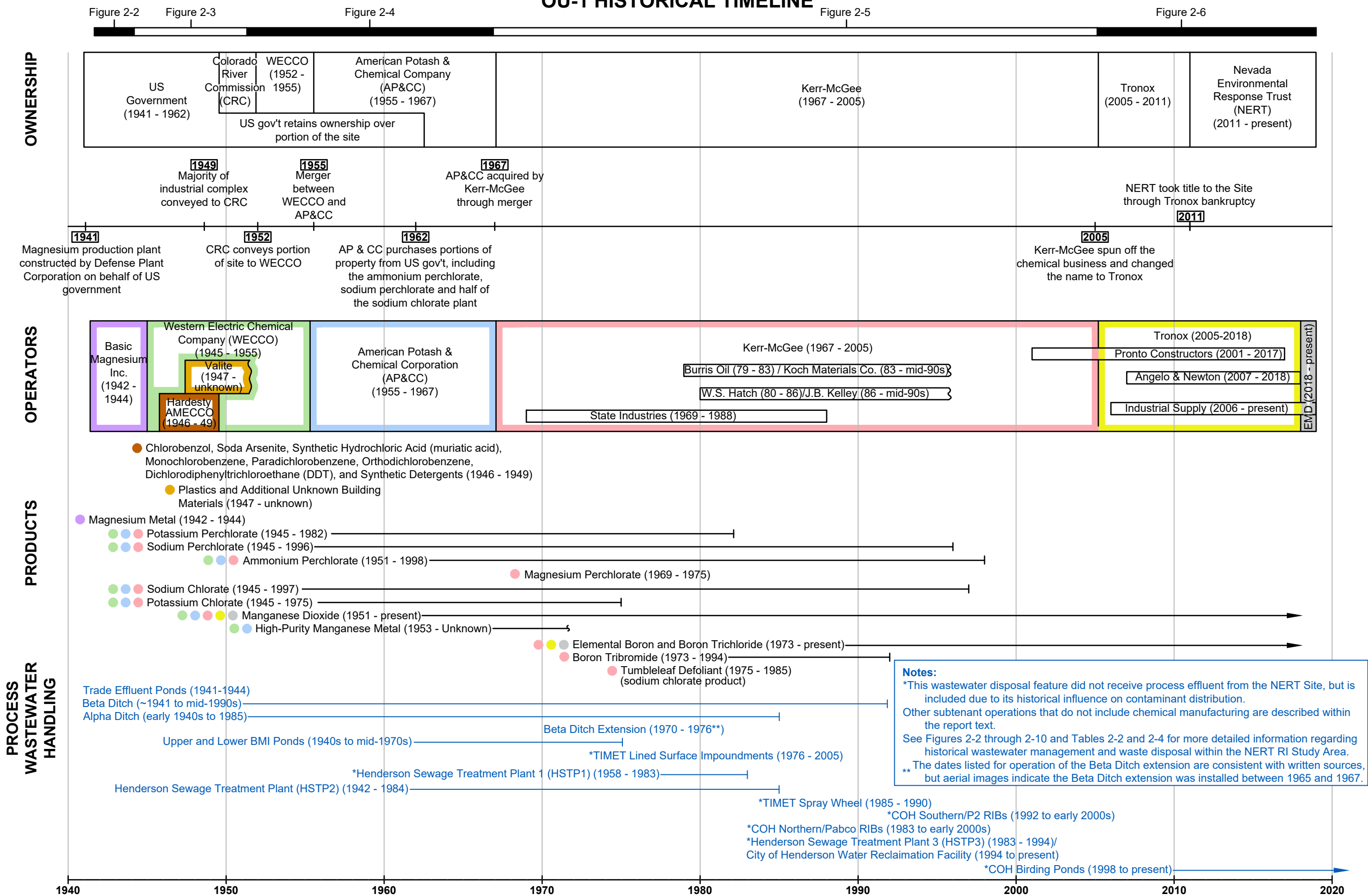


OU-1 HISTORICAL TIMELINE

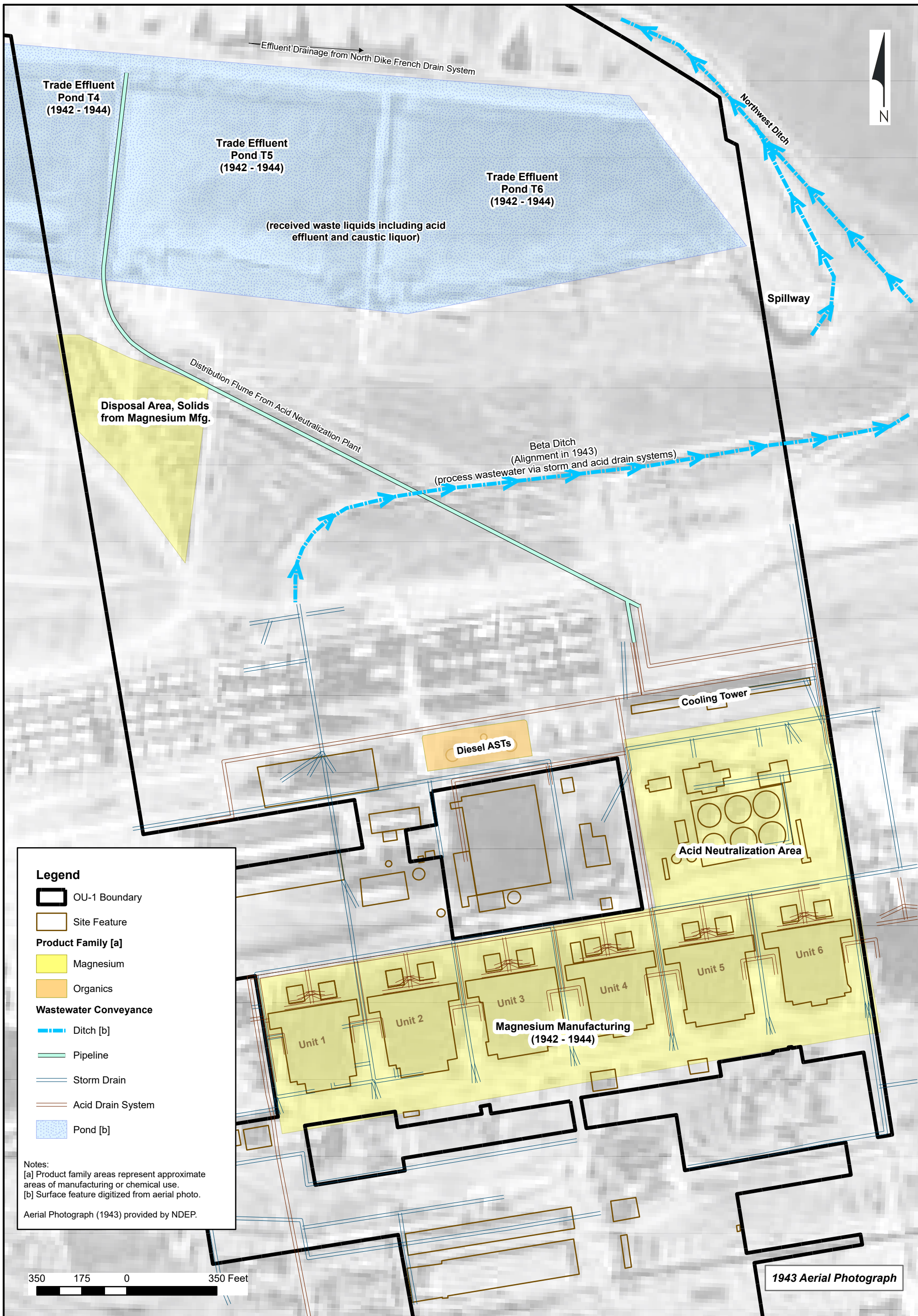


RMSO 8/3/22 C:\USERS\RMSO\ONEEDRIVE - RAMBOLL\DESKTOP\DRAWING\1690006943 - NERT HISTORICAL TIMELINE-AUG2022 >



OU-1 Historical Timeline
Nevada Environmental Response Trust Site
Henderson, Nevada

Figure
2-1

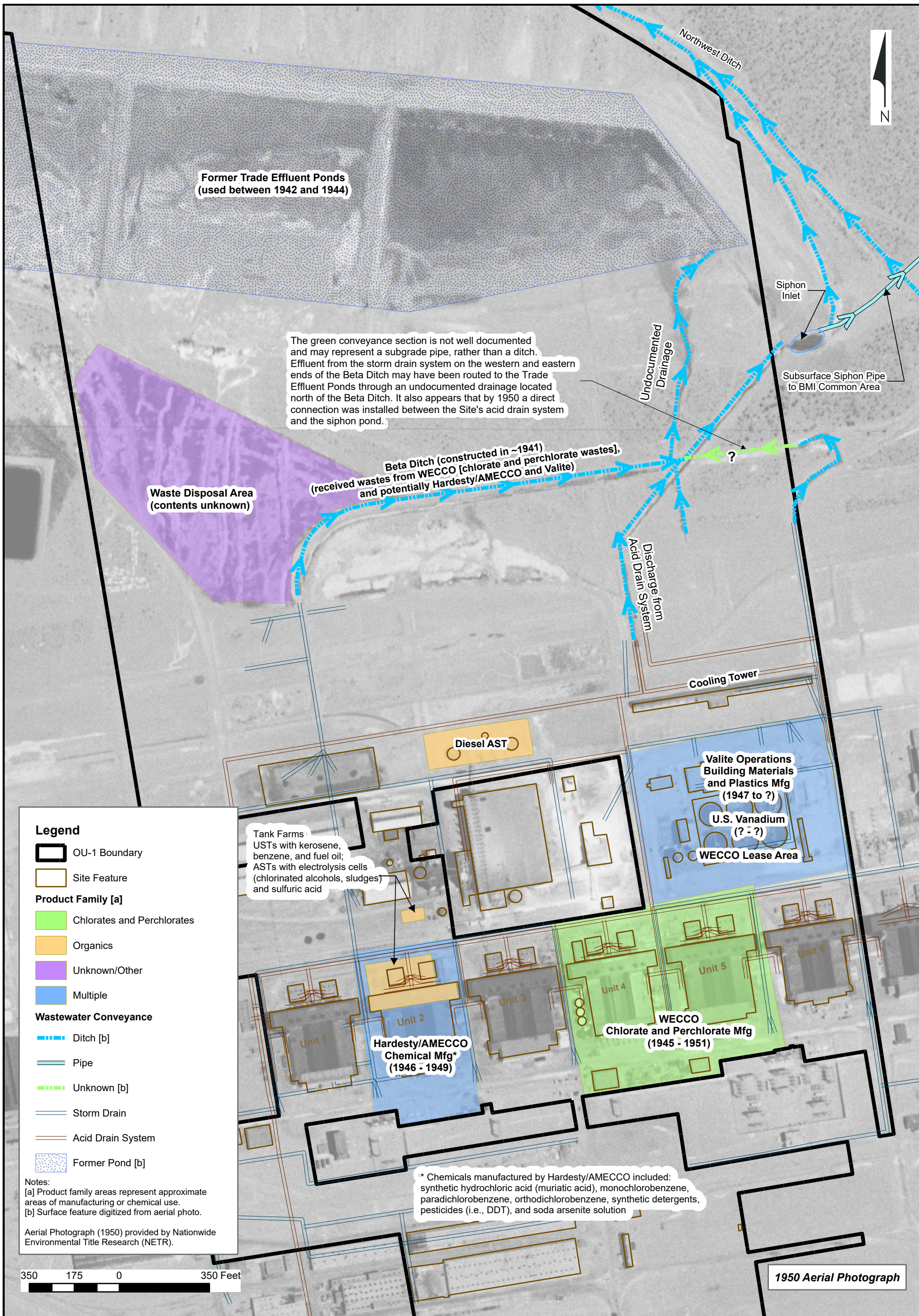


Path: H:\L\Petromane\NERT\OU-1_OU-2_RI_Report\GIS\revision1.aprx\Fig 2-2 1941-1944



U.S. Government Operations, 1941-1944
 Nevada Environmental Response Trust Site
 Henderson, Nevada

Figure
2-2

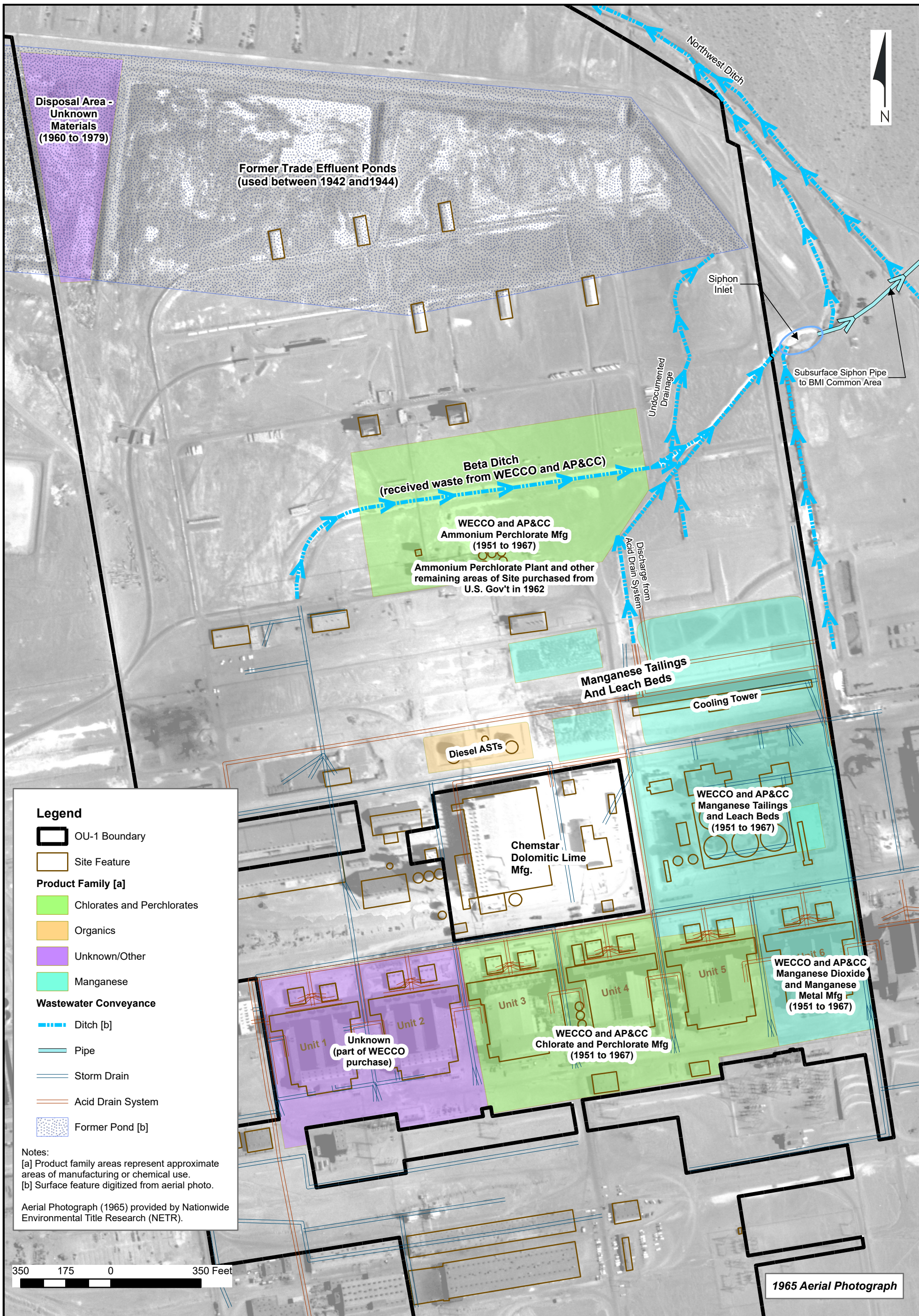


Path: H:\LePetomane\NETR\OU-1_OU-2_RI_Report\GIS\revision1.aprx\Fig 2-3 1945-1950



WECCO, Hardesty/AMECCO, and Valite, 1945 to Approximately 1950
Nevada Environmental Response Trust Site
Henderson, Nevada

Figure
2-3

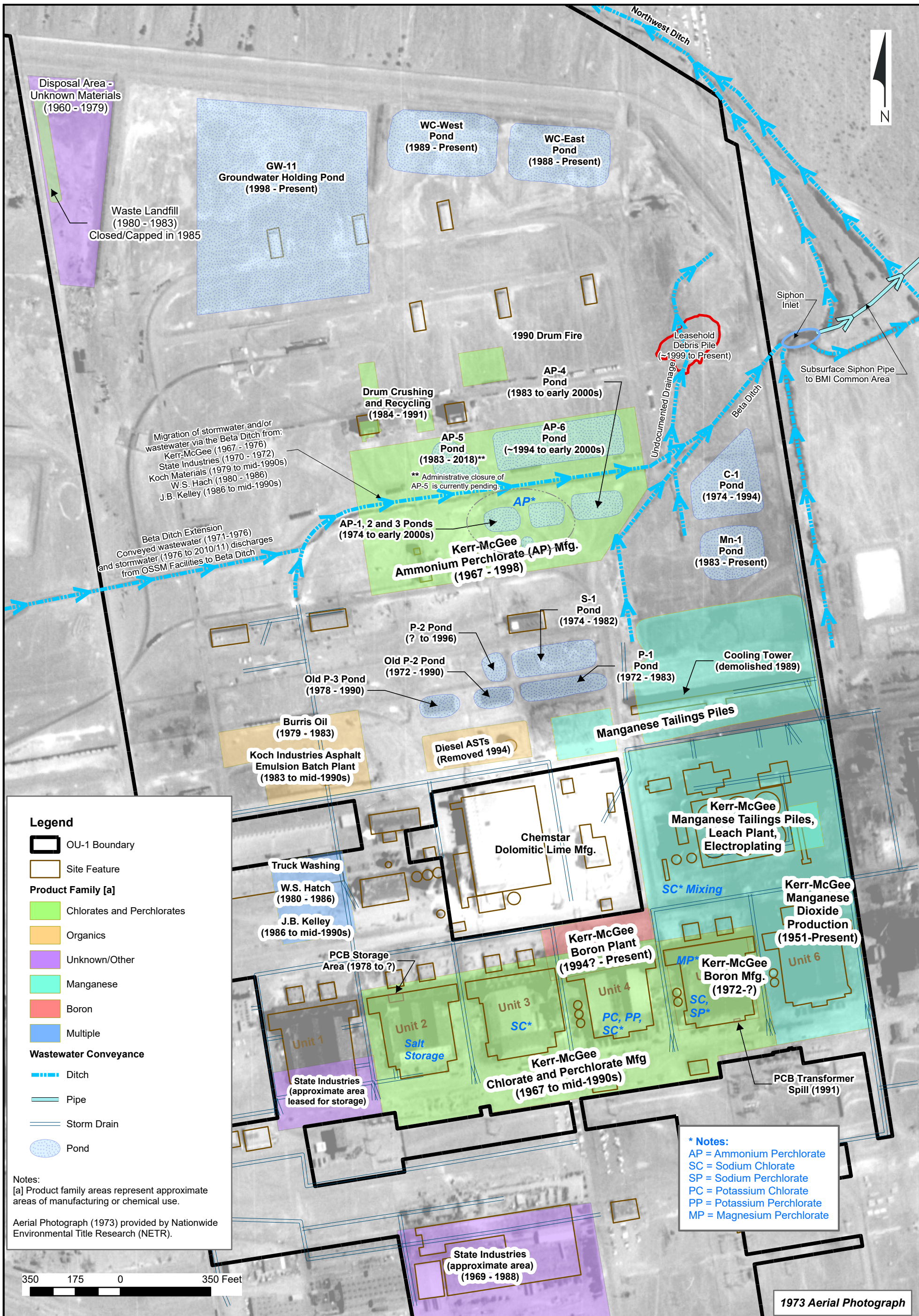


Path: H:\L\Petromane\NETR\OU-1_OU-2 RI Report\GIS\revision1\revision1.aprx\Fig 2-4 1951-1967



WECCO and AP&CC Operations, 1951-1967
 Nevada Environmental Response Trust Site
 Henderson, Nevada

Figure
2-4



Notes:
 [a] Product family areas represent approximate areas of manufacturing or chemical use.
 Aerial Photograph (1973) provided by Nationwide Environmental Title Research (NETR).

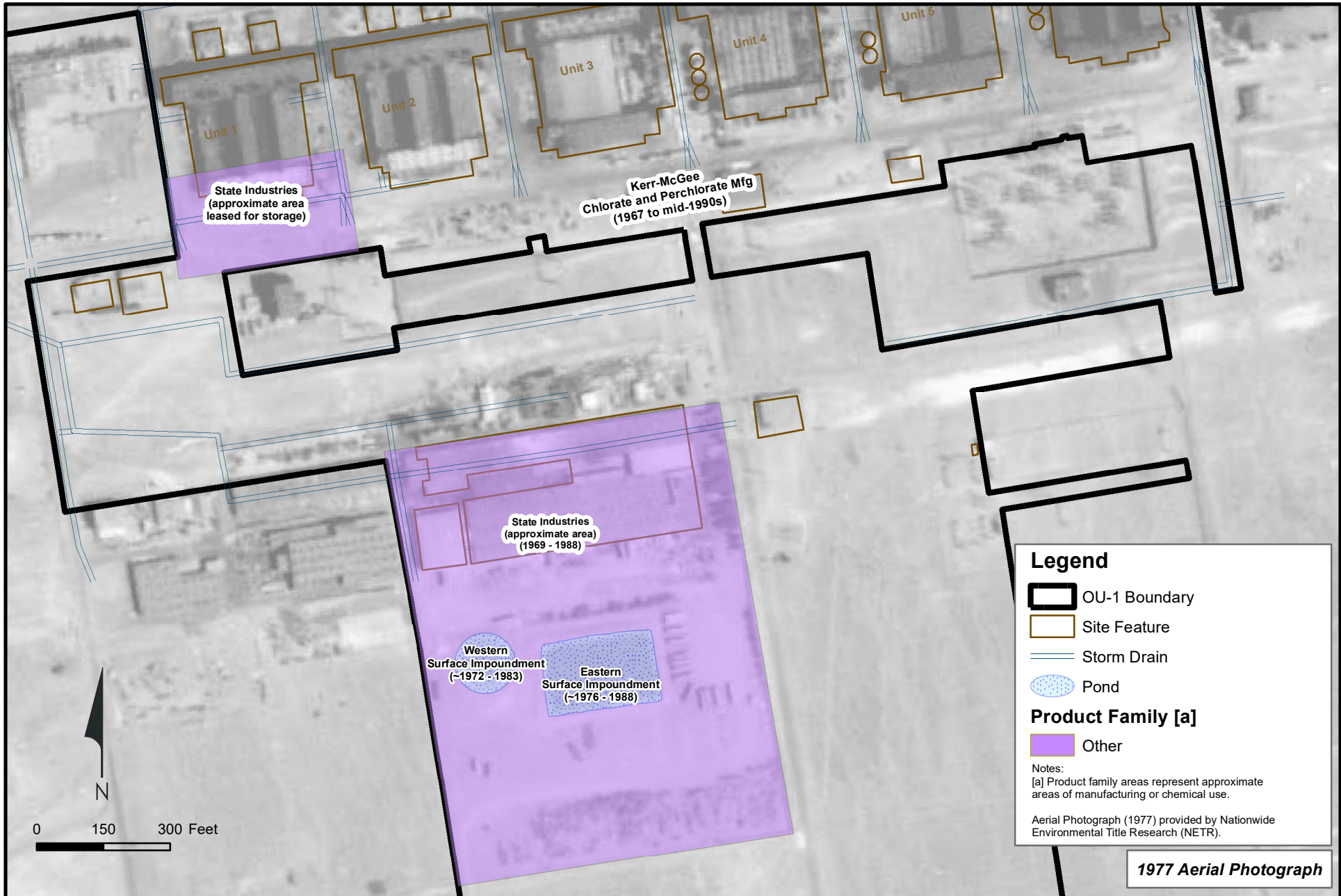
*** Notes:**
 AP = Ammonium Perchlorate
 SC = Sodium Chlorate
 SP = Sodium Perchlorate
 PC = Potassium Chlorate
 PP = Potassium Perchlorate
 MP = Magnesium Perchlorate



Kerr-McGee Operations, 1967-2005
 Nevada Environmental Response Trust Site
 Henderson, Nevada

Figure
2-5a

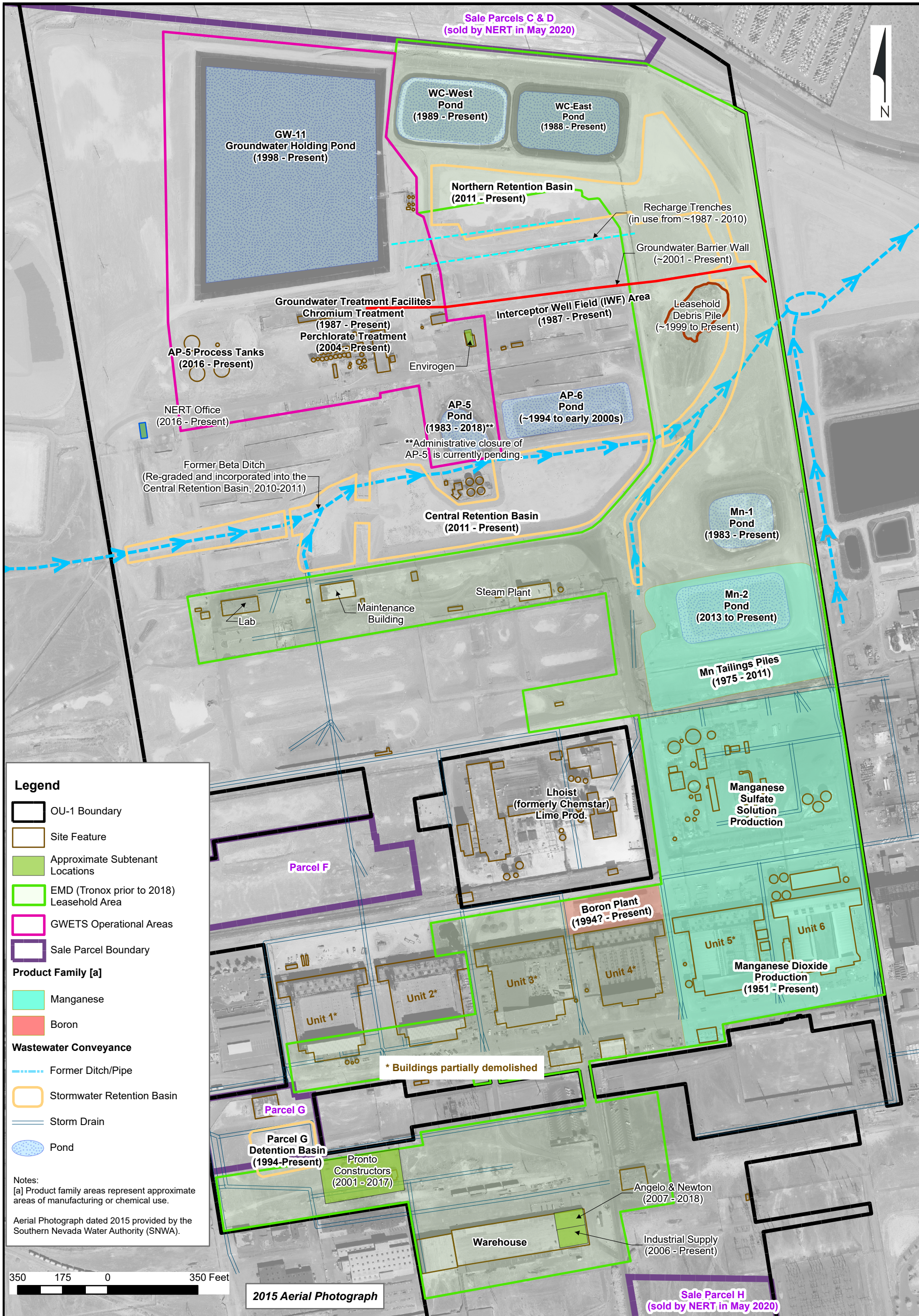
Path: H:\L\Petromane\NETR\OU-1_OU-2_RI_Report\GIS\revision1.aprx\Fig 2-5a 1967-2005



State Industries Operations, Sublessee of Kerr-McGee, 1969-1988
Nevada Environmental Response Trust Site
Henderson, Nevada

Figure
2-5b

Path: \\wcevfps1\ENGL\LePetomane\NERT\RI OU-1_OU-2 RI Report\Sections\Section 2 - Site History\GIS\fig_2-5b_1969-1988-2.mxd



Legend

- OU-1 Boundary
- Site Feature
- Approximate Subtenant Locations
- EMD (Tronox prior to 2018) Leasehold Area
- GWETS Operational Areas
- Sale Parcel Boundary

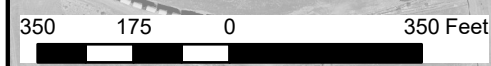
Product Family [a]

- Manganese
- Boron

Wastewater Conveyance

- Former Ditch/Pipe
- Stormwater Retention Basin
- Storm Drain
- Pond

Notes:
 [a] Product family areas represent approximate areas of manufacturing or chemical use.
 Aerial Photograph dated 2015 provided by the Southern Nevada Water Authority (SNWA).



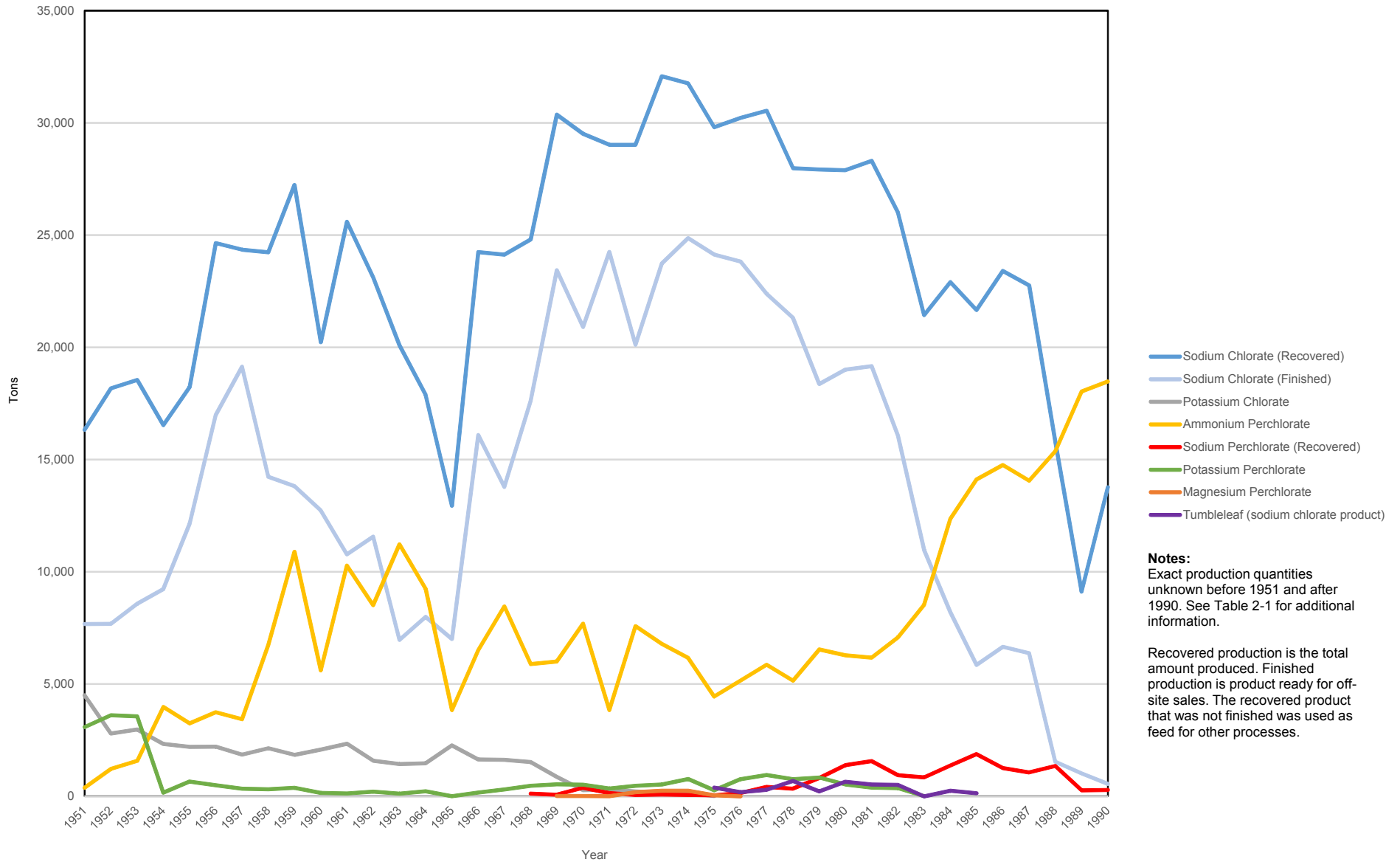
2015 Aerial Photograph



EMD/Tronox and NERT (Current Operations), 2005 - Present
 Nevada Environmental Response Trust Site
 Henderson, Nevada

Figure
2-6

Path: H:\LePetomane\NERT\OU-1_OU-2_RI\Report\GIS\revision1\revision1.aprx\Fig 2-6 2005-present



Notes:
Exact production quantities unknown before 1951 and after 1990. See Table 2-1 for additional information.

Recovered production is the total amount produced. Finished production is product ready for off-site sales. The recovered product that was not finished was used as feed for other processes.

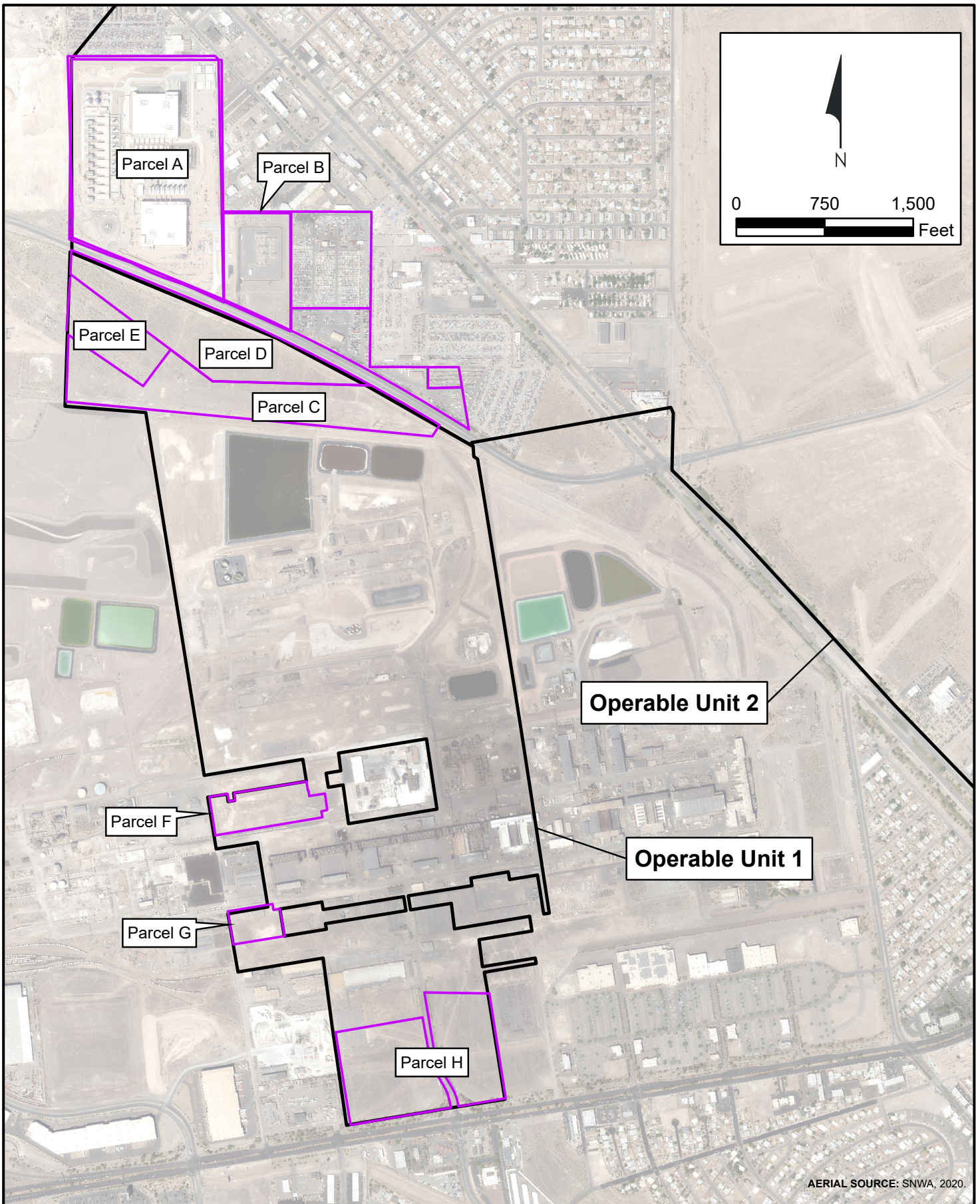


Chemical Production Summary (1951-1990)

Nevada Environmental Response Trust (NERT) Site
Henderson, Nevada

Figure

2-7



Sale Parcels
 Nevada Environmental Response Trust Site
 Henderson, Nevada

Figure
2-8

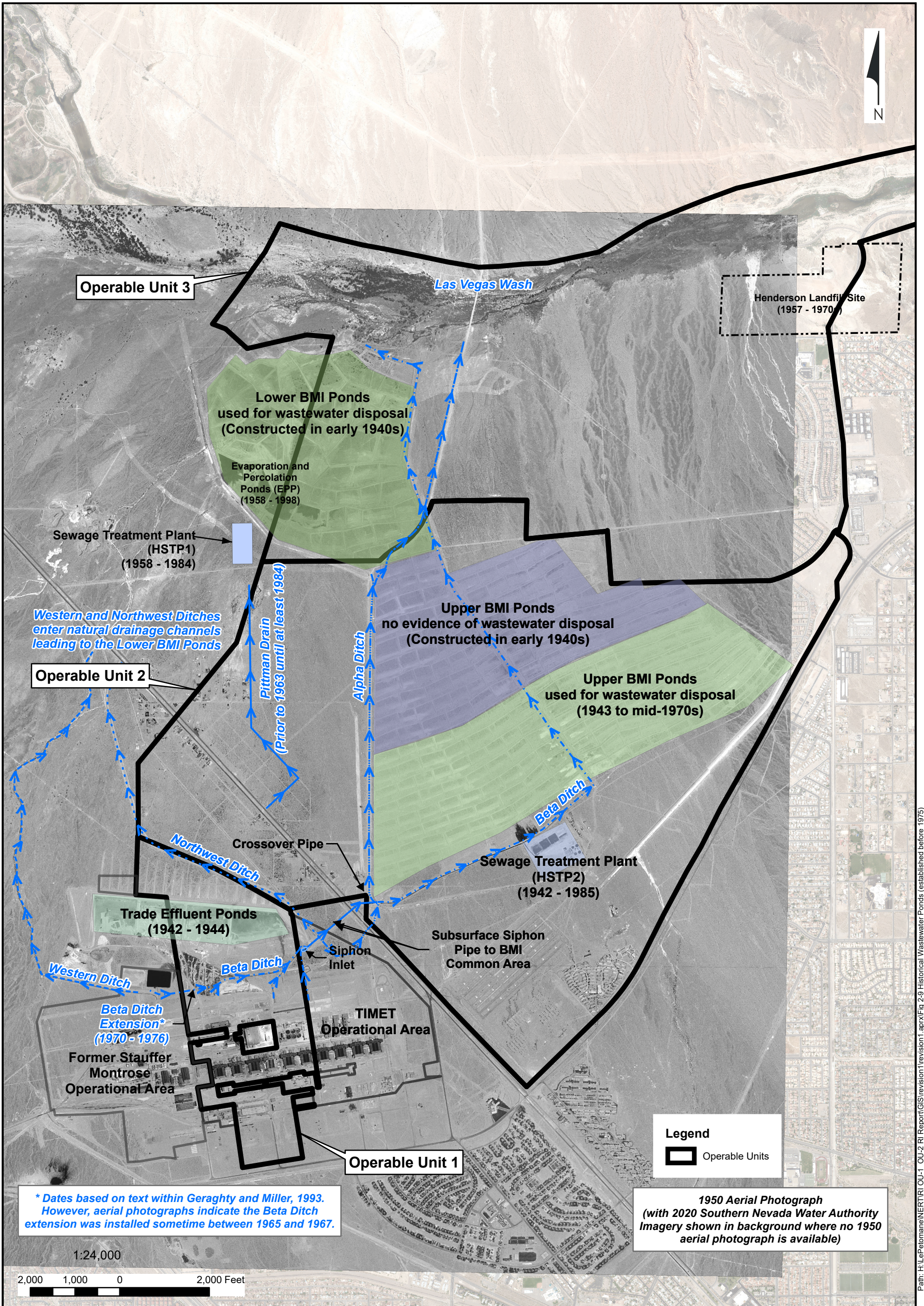
Drafter: RS/JC

Date: 2023-01-09.

Contract Number: 1690025040

Approved:

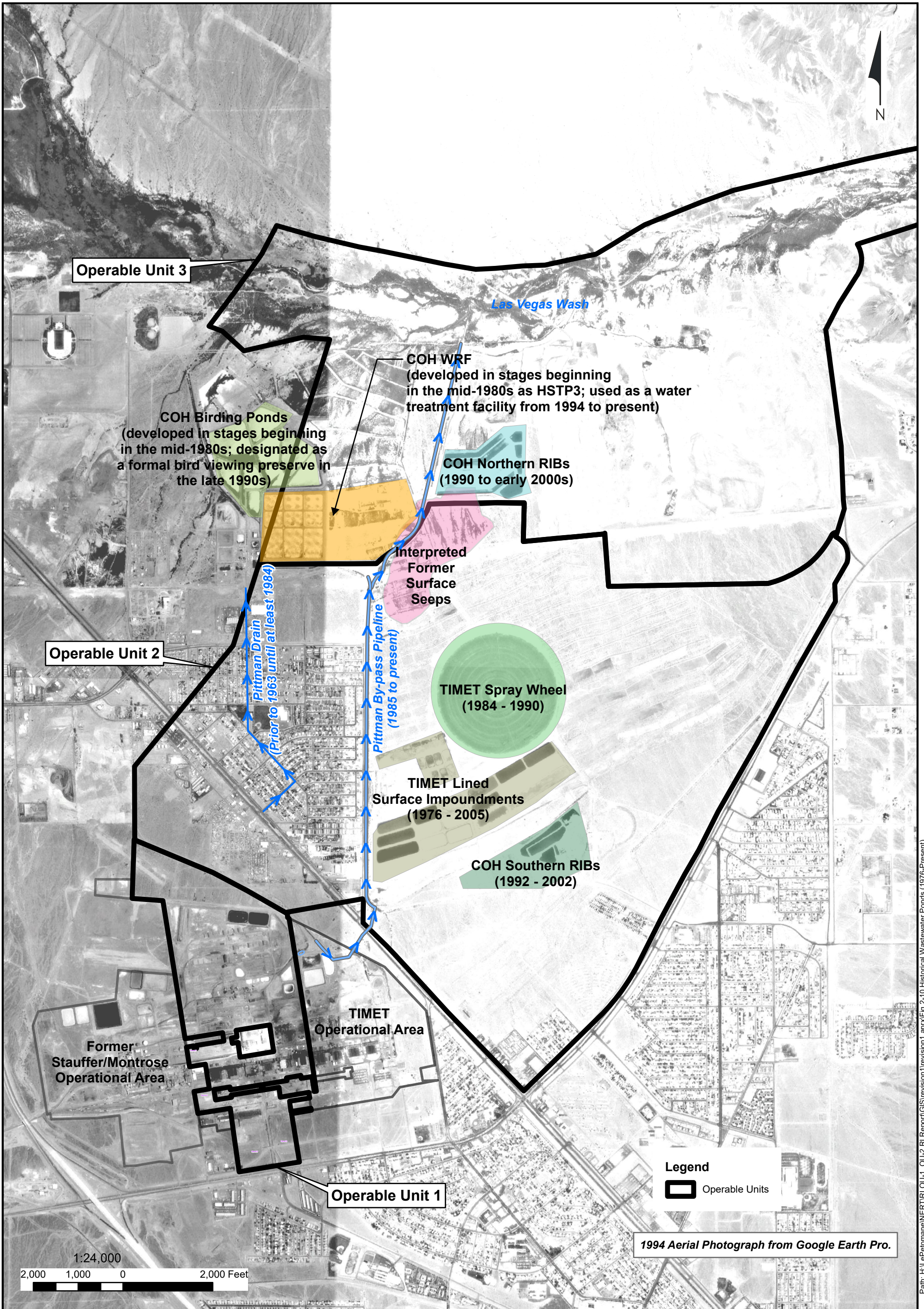
Revised:



* Dates based on text within Geraghty and Miller, 1993. However, aerial photographs indicate the Beta Ditch extension was installed sometime between 1965 and 1967.

1950 Aerial Photograph
(with 2020 Southern Nevada Water Authority Imagery shown in background where no 1950 aerial photograph is available)

Path: H:\L\Pateman\NERT\OU-1_OU-2_RI Report\GIS\revision1\revision1.aprx\Fig 2-9 Historical Wastewater Ponds (established before 1975)



Path: H:\L\Patman\NERT\RI_OU-2_RI_Report\GIS\revision1\revision1.aprx|Fig 2-10 Historical Wastewater Ponds (1976-Present)