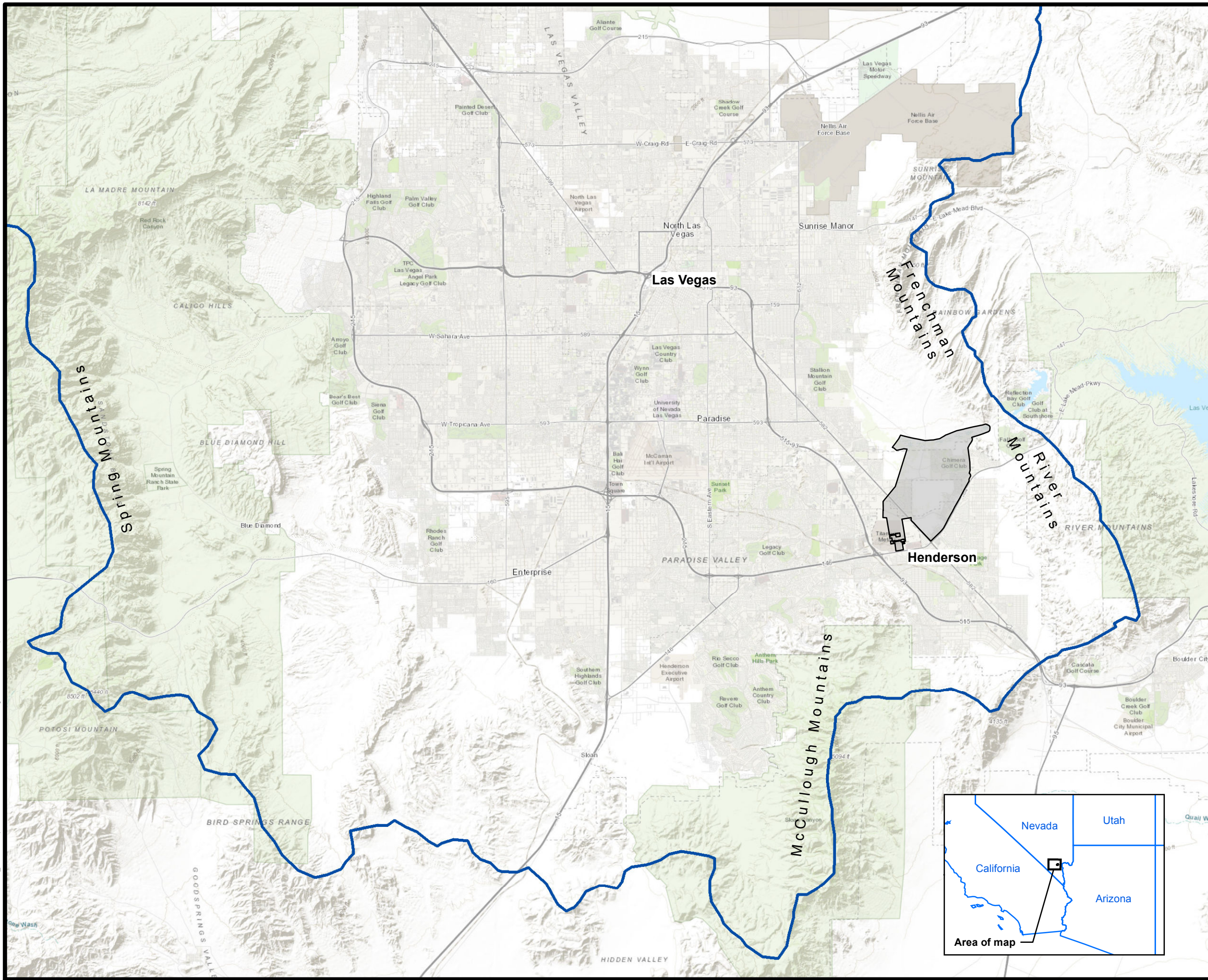

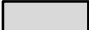


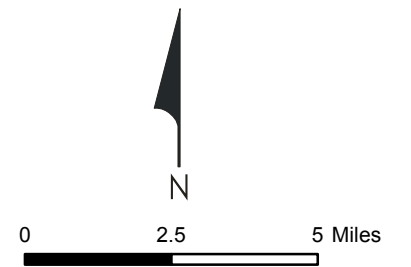
Path: H:\LePetra\NERT\RI\_OU-1\_OU-2\RI\_Report\Sections\Section 1 - Introduction\GIS\Fig 1-1 RI Location Map.mxd



**LEGEND:**

-  Las Vegas Valley Hydrologic Basin
-  NERT RI Study Area

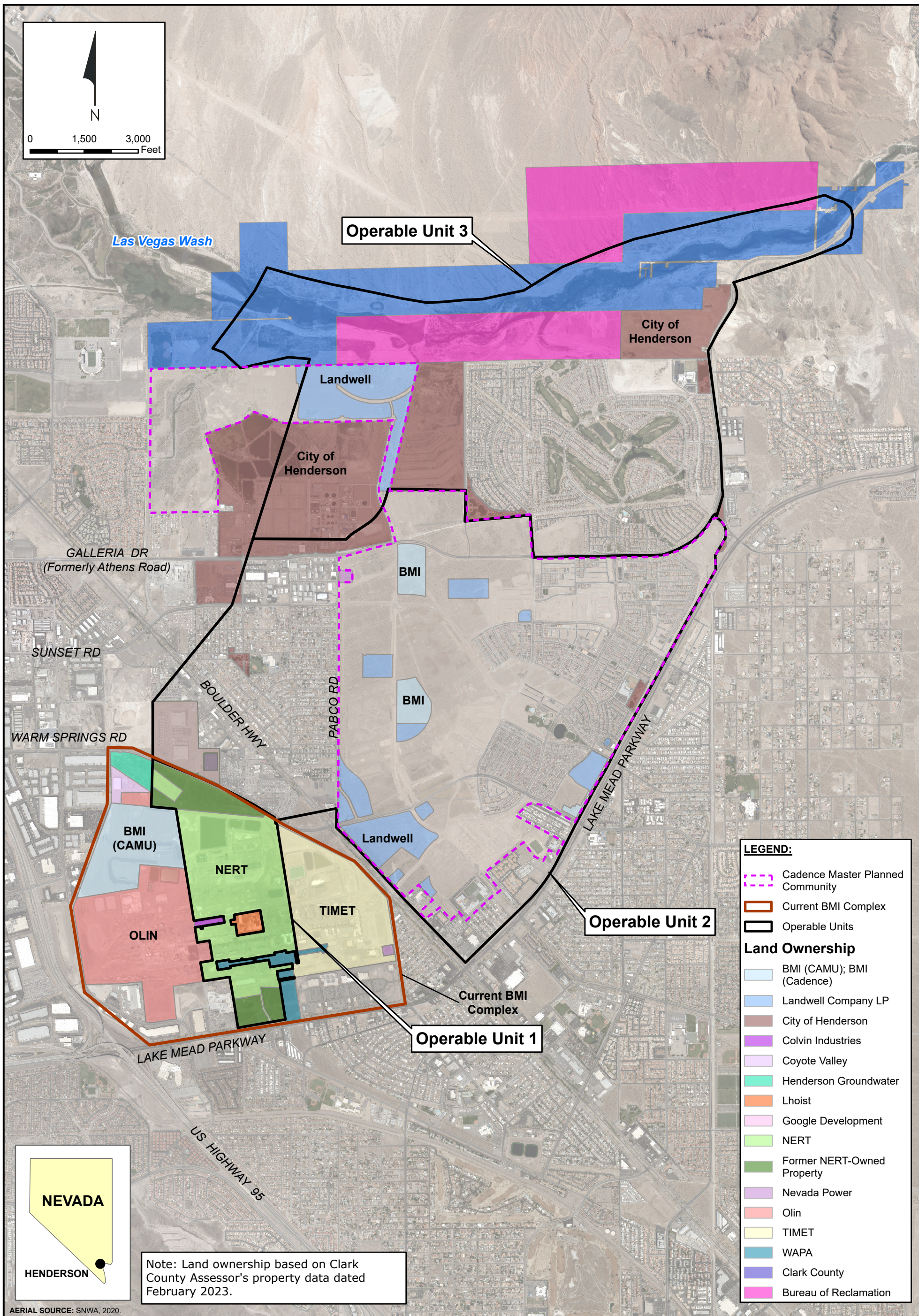
**Note:**  
See Figure ES-3 for NERT RI Study Area details.



**NERT RI Study Area Location Map**  
Nevada Environmental Response Trust Site  
Henderson, Nevada

Date: 5/4/2020	Contract Number: 169001 6064	Figure
Drafter: RS	Approved:	Revised:
		<b>ES-1</b>



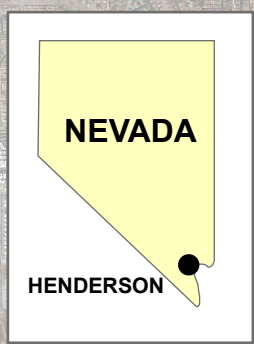


**LEGEND:**

- Cadence Master Planned Community
- Current BMI Complex
- Operable Units

**Land Ownership**

- BMI (CAMU); BMI (Cadence)
- Landwell Company LP
- City of Henderson
- Colvin Industries
- Coyote Valley
- Henderson Groundwater
- Lhoist
- Google Development
- NERT
- Former NERT-Owned Property
- Nevada Power
- Olin
- TIMET
- WAPA
- Clark County
- Bureau of Reclamation



Note: Land ownership based on Clark County Assessor's property data dated February 2023.

AERIAL SOURCE: SNWA, 2020.

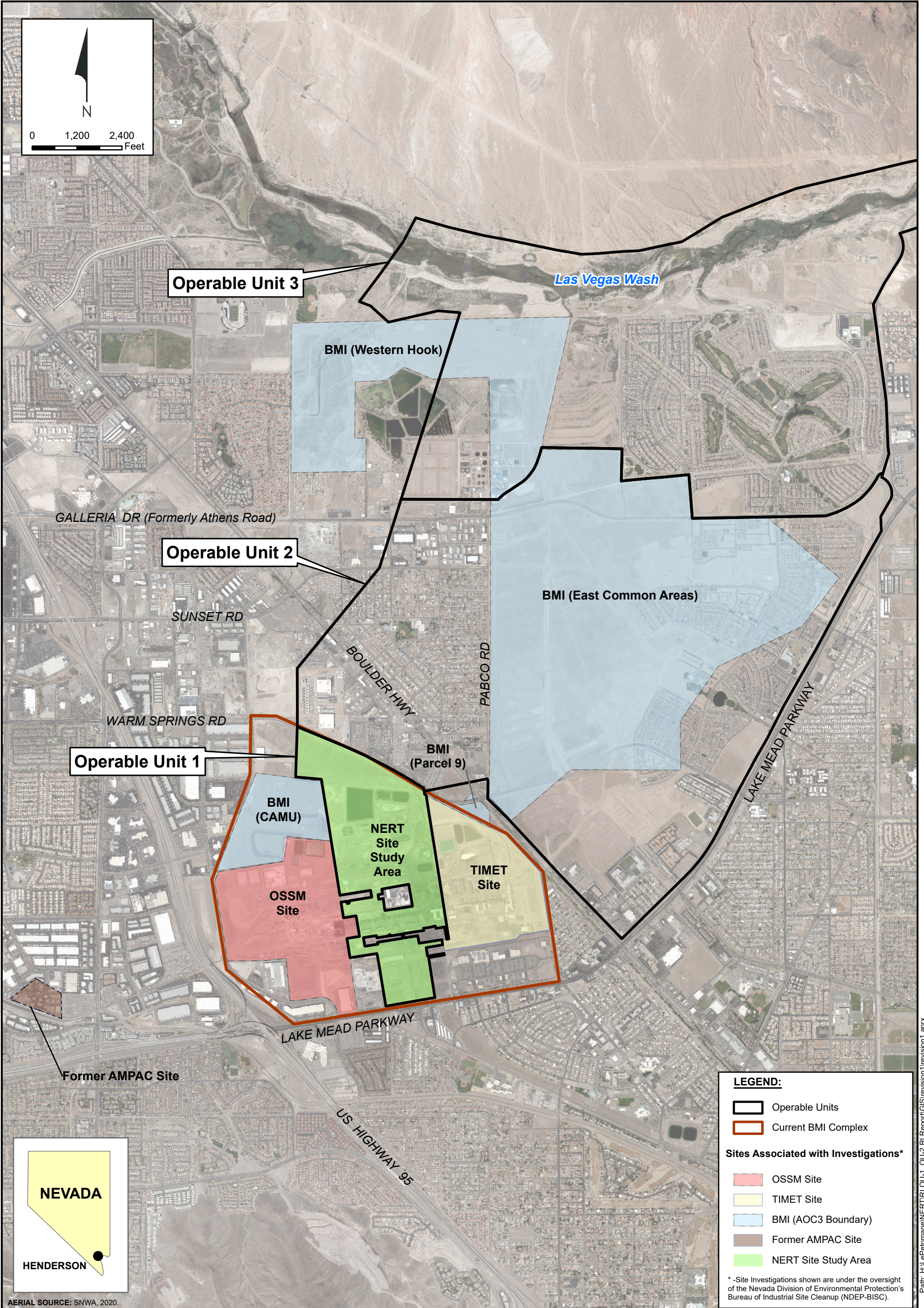
Path: H:\LePetomane\NERT\RI OU-1\_OU-2 RI Report\GIS\revision1\revision1.aprx



**Major Land Ownership in the RI Study Area**  
 Nevada Environmental Response Trust Site  
 Henderson, Nevada

Figure  
**ES-2a**





**LEGEND:**

- Operable Units
- Current BMI Complex

**Sites Associated with Investigations\***

- OSSM Site
- TIMET Site
- BMI (AOC3 Boundary)
- Former AMPAC Site
- NERT Site Study Area

\* -Site Investigations shown are under the oversight of the Nevada Division of Environmental Protection's Bureau of Industrial Site Cleanup (NDEP-BISC).



AERIAL SOURCE: SNWA, 2020.

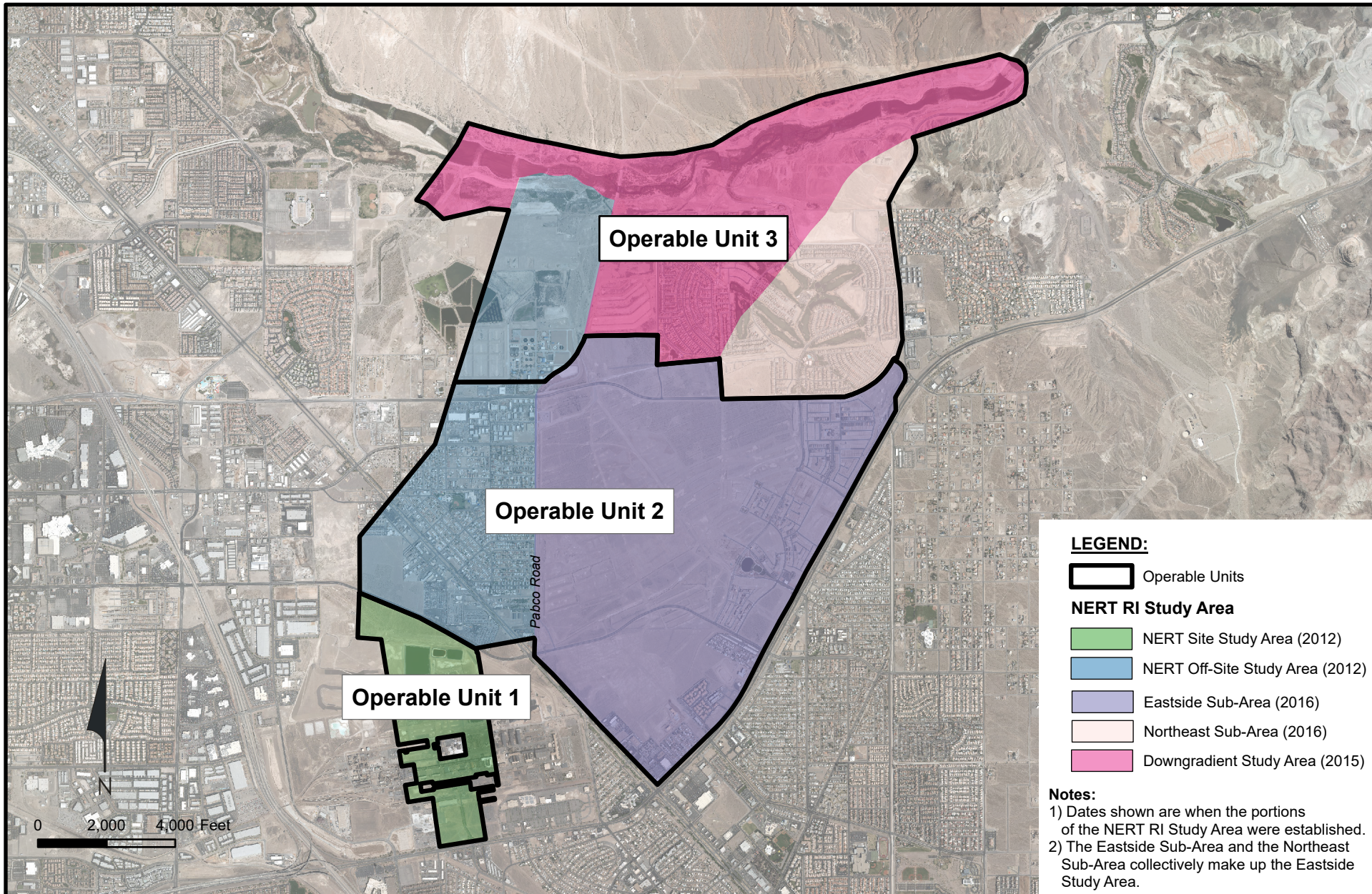


**Environmental Site Investigations in the RI Study Area**  
 Nevada Environmental Response Trust Site  
 Henderson, Nevada

Figure  
**ES-2b**

Path: H:\L\Petromane\NERT\RI\_OU-1\_OU-2\_RI\_Report\GIS\revision1\revision1.aprx





**NERT RI Study Area Operable Units**  
 Nevada Environmental Response Trust Site  
 Henderson, Nevada

Figure  
**ES-3a**

Drafter: RS

Date: 2023-01-09

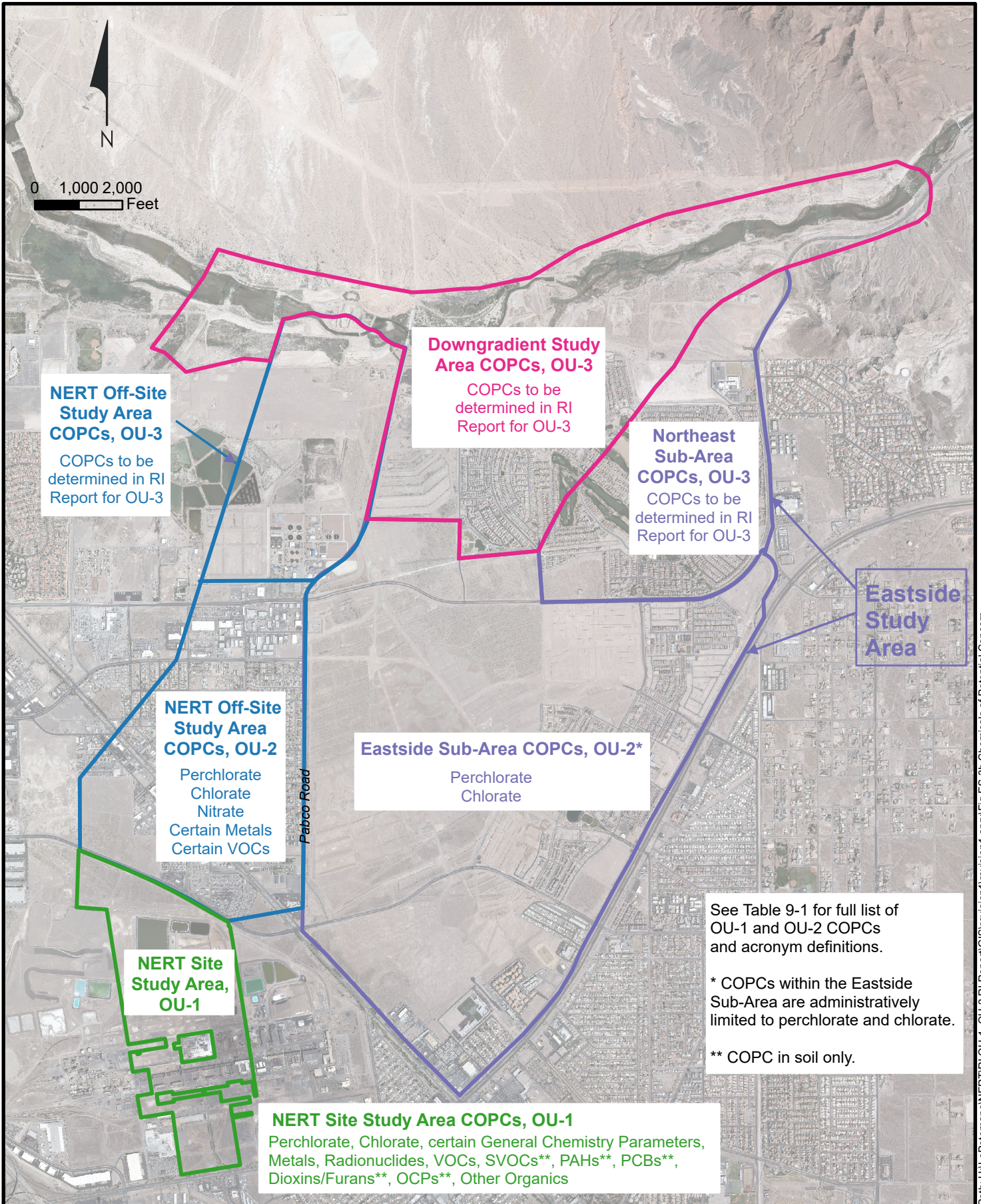
Contract Number:

1590025040

Approved:

Revised:





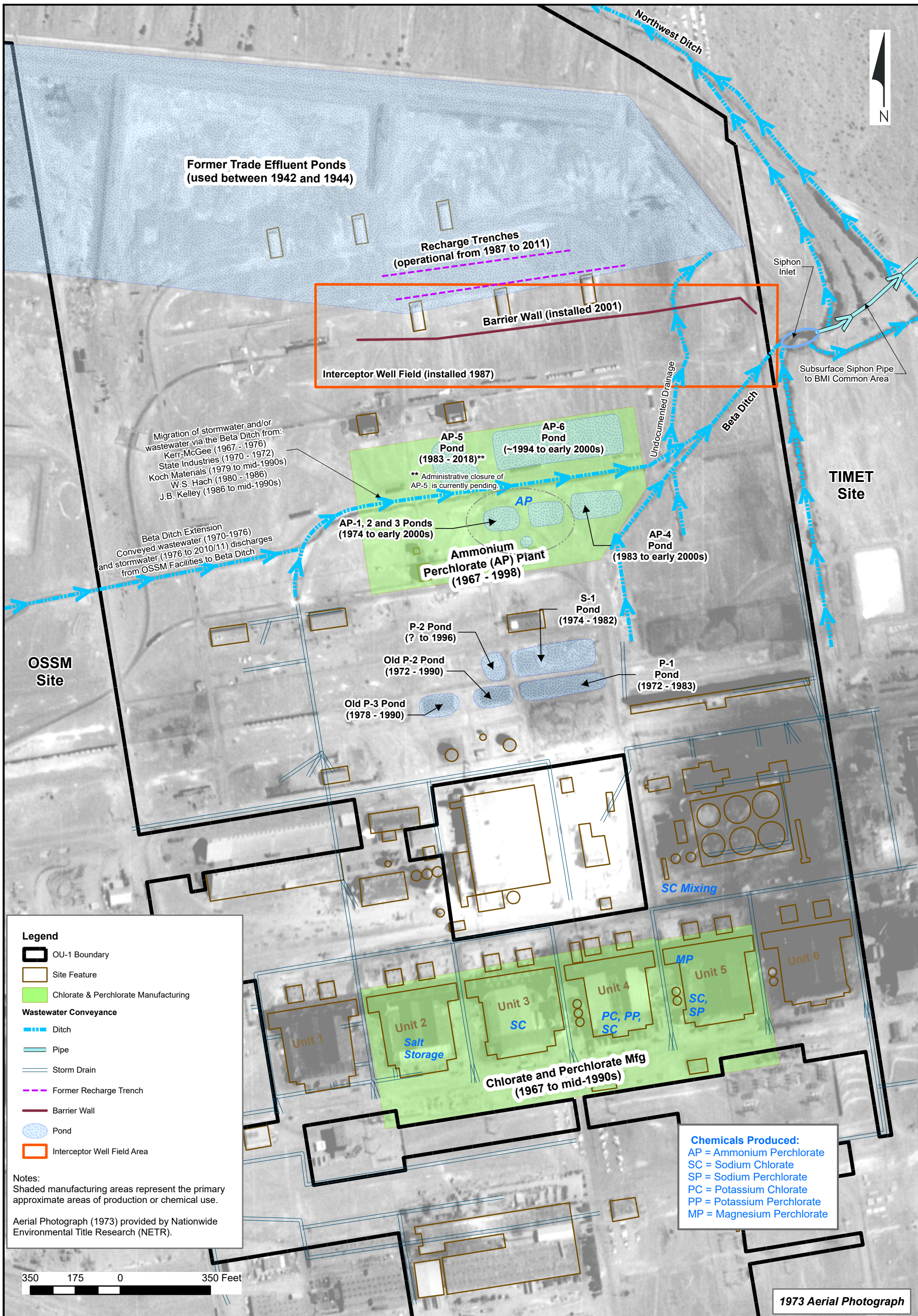
Path: H:\LePetomane\NERT\RI\OU-1\_OU-2 RI Report\GIS\revision1\revision1.aprx\Fig ES-3b Chemicals of Potential Concern



**Chemicals of Potential Concern (COPCs), NERT RI Study Area**  
Nevada Environmental Response Trust Site  
Henderson, Nevada

Figure  
**ES-3b**





Path: H:\L\Petromane\NETR\OU-1\_OU-2\_RI\_Report\GIS\revision1.aprx\Fig ES-4a Major Historical Sources of Contamination



**Historical Sources of Contamination in OU-1**  
Nevada Environmental Response Trust Site  
Henderson, Nevada

Figure  
**ES-4a**



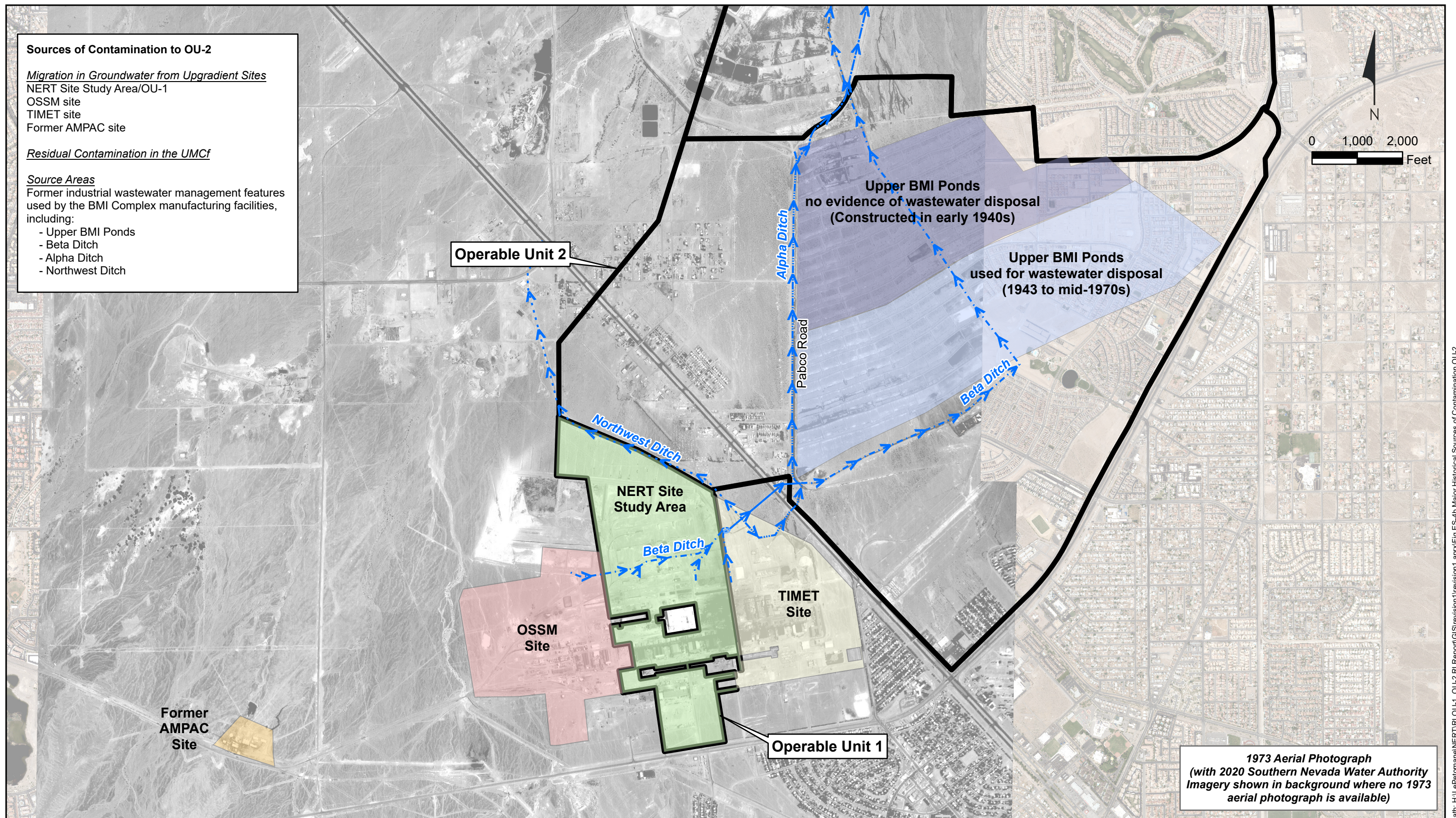
**Sources of Contamination to OU-2**

*Migration in Groundwater from Upgradient Sites*  
 NERT Site Study Area/OU-1  
 OSSM site  
 TIMET site  
 Former AMPAC site

*Residual Contamination in the UMCf*

*Source Areas*  
 Former industrial wastewater management features used by the BMI Complex manufacturing facilities, including:

- Upper BMI Ponds
- Beta Ditch
- Alpha Ditch
- Northwest Ditch



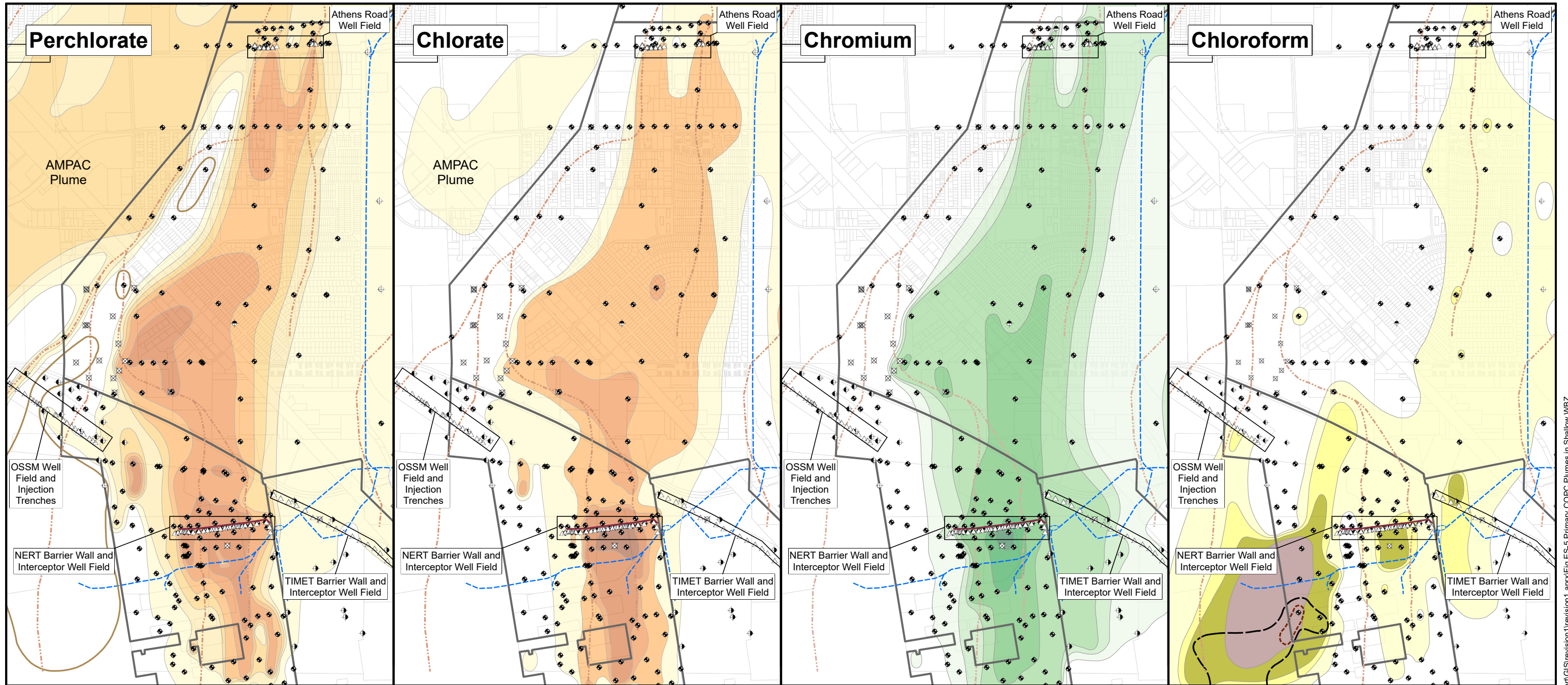
1973 Aerial Photograph  
 (with 2020 Southern Nevada Water Authority  
 Imagery shown in background where no 1973  
 aerial photograph is available)



**Historical Sources of Contamination to OU-2**  
 Nevada Environmental Response Trust Site  
 Henderson, Nevada

Figure  
**ES-4b**





Perchlorate Concentration - mg/L



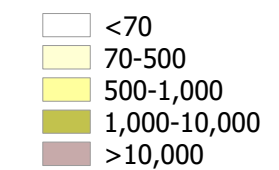
Chlorate Concentration - mg/L



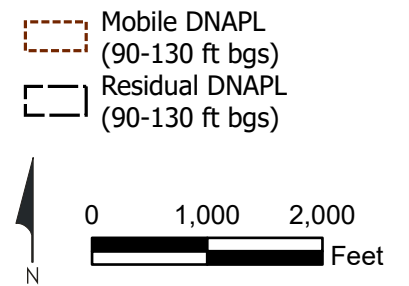
Chromium Concentration - µg/L



Chloroform Concentration - µg/L



- - - Paleochannel (approximate)
- - - Former Ditch
- ▭ OU Boundary
- Barrier Wall
- ▭ Well Field Area
- △ Extraction Well



**Primary COPC Plumes in the Shallow WBZ (0-55 ft bgs)**  
 Nevada Environmental Response Trust Site  
 Henderson, Nevada

Figure  
**ES-5**

Path: H:\LePetomane\NERT\RI\_OU-2\RI\_Report\GIS\revision1\revision1.aprx\Fig ES-5 Primary COPC Plumes in Shallow WBZ