

TECHNICAL MEMORANDUM

To: Nevada Environmental Response Trust

Cc: Nevada Division of Environmental Protection
United States Environmental Protection Agency

From: Dana Grady

Date: October 24, 2023

Subject: Las Vegas Wash ZVI-Enhanced Bioremediation Treatability Study Monthly Progress Report

At the direction of the Nevada Environmental Response Trust (NERT or Trust), Tetra Tech, Inc. (Tetra Tech) has prepared this memorandum to summarize Tetra Tech's progress during August 2023 toward successfully implementing the Las Vegas Wash Zero-Valent Iron (ZVI)-Enhanced Bioremediation Treatability Study.

Task Progress Update: August 2023

Task M18 – Las Vegas Wash ZVI-Enhanced Bioremediation Treatability Study

- Current Status –
 - The Las Vegas Wash ZVI-Enhanced Bioremediation Treatability Study is being conducted to evaluate the effectiveness of ZVI-enhanced bioremediation of perchlorate-contaminated groundwater that has migrated downgradient of the NERT site toward the Las Vegas Wash. The general treatability study layout, including locations of the continuous and discontinuous ZVI walls and associated injection well and monitoring well network, is presented on Figures 1, 2a, and 2b. Well construction details are provided in Table 1. The construction phase of the treatability study was completed on April 24, 2023 and the performance monitoring phase is ongoing.
 - Performance Monitoring – The performance monitoring program is being implemented in accordance with the NDEP-approved Work Plan Addendum. The monitoring program included a pre-construction, baseline groundwater sampling event completed in October 2022 prior to installation of the continuous and discontinuous ZVI walls and the larger performance monitoring well network. Following completion of construction activities, the performance monitoring program includes a groundwater sampling event at approximately one month after completion of the construction phase and quarterly events thereafter for a total performance monitoring duration of 16 months. Available draft groundwater analytical results from the baseline sampling event and the subsequent Month 1 performance monitoring event were presented in the July 2023 monthly progress report.

The first quarterly performance monitoring event was conducted from August 21 to August 31, 2023, which is approximately four months after completion of the construction phase. In addition,

Bio-Trap® samplers were installed in twenty-three monitoring wells on August 31, 2023 and will be retrieved approximately 30 days after deployment. The analytical results from the Bio-Trap® samplers will be used to evaluate the microbial community within each test area on a semi-annual basis. Results from the August sampling event (both groundwater sampling and Bio-Traps®) will be summarized in future monthly progress reports when the laboratory data have been received.

- Monthly Synoptic Monitoring – Monthly synoptic monitoring is also being performed to evaluate changes in horizontal and vertical gradients, assess for potential groundwater mounding upgradient of the ZVI reactive zones, assess hydraulic effects of seasonal precipitation, and evaluate potential non-uniform flow. Results from the August monthly synoptic monitoring event, performed on August 16, 2023 did not indicate any significant changes to groundwater elevations in monitoring wells located upgradient, within, and/or downgradient of ZVI reactive zones.
- **Schedule and Progress Updates**
 - Groundwater levels will be measured on a monthly basis for the duration of the treatability study. The next monthly synoptic event and Bio-Traps® sample collection are scheduled for the week of September 25, 2023.
 - Groundwater samples will continue to be collected on a quarterly basis to generate time-series data to evaluate the treatment effectiveness of the ZVI installations with respect to the design performance criteria. The next quarterly groundwater sampling event is planned for November 2023.
- **Health and Safety**
 - There were no health and safety incidents related to Task M18 during August 2023.

CERTIFICATION

Las Vegas Wash ZVI-Enhanced Bioremediation Treatability Study Monthly Progress Report

**Nevada Environmental Response Trust Site
(Former Tronox LLC Site)
Henderson, Nevada**

Nevada Environmental Response Trust (NERT) Representative Certification

I certify that this document and all attachments submitted to the Division were prepared at the request of, or under the direction or supervision of NERT. Based on my own involvement and/or my inquiry of the person or persons who manage the systems(s) or those directly responsible for gathering the information or preparing the document, or the immediate supervisor of such person(s), the information submitted and provided herein is, to the best of my knowledge and belief, true, accurate, and complete in all material respects.

Office of the Nevada Environmental Response Trust

Le Petomane XXVII, not individually, but solely in its representative capacity as the Nevada Environmental Response Trust Trustee

Not Individually, but Solely
as President of the Trustee

Signature:  _____, not individually, but solely in his representative capacity as President of the Nevada Environmental Response Trust Trustee

Name: Jay A. Steinberg, not individually, but solely in his representative capacity as President of the Nevada Environmental Response Trust Trustee

Title: Solely as President and not individually

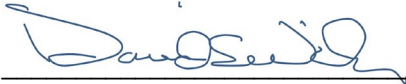
Company: Le Petomane XXVII, Inc., not individually, but solely in its representative capacity as the Nevada Environmental Response Trust Trustee

Date: 10/24/23

CERTIFICATION

I hereby certify that I am responsible for the services described in this document and for the preparation of this document. The services described in this document have been prepared in a manner consistent with the current standards of the profession, and to the best of my knowledge, comply with all applicable federal, state, and local statutes, regulations, and ordinances. I hereby certify that all laboratory analytical data was generated by a laboratory certified by the NDEP for each constituent and media presented herein.

Description of Services Provided: Prepared Las Vegas Wash ZVI-Enhanced Bioremediation Treatability Study Monthly Progress Report.



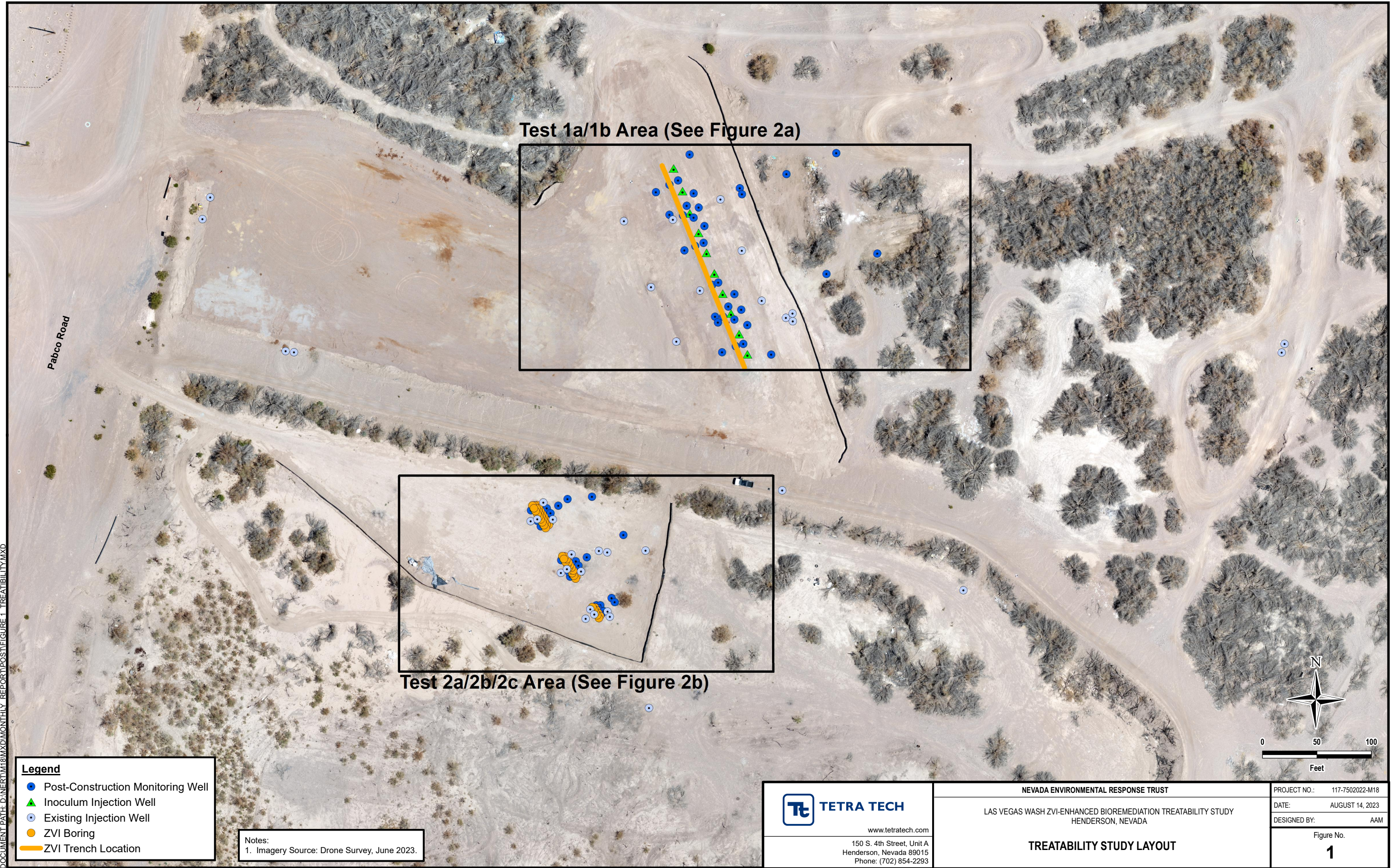
David S. Wilson, CEM
Principal Engineer
Tetra Tech, Inc.

October 24, 2023

Date

Nevada CEM Certificate Number: 2385
Nevada CEM Expiration Date: September 19, 2024

Figures



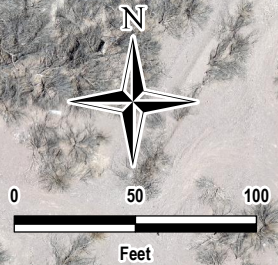
Test 1a/1b Area (See Figure 2a)

Test 2a/2b/2c Area (See Figure 2b)

Pabco Road

- Legend**
- Post-Construction Monitoring Well
 - ▲ Inoculum Injection Well
 - Existing Injection Well
 - ZVI Boring
 - ZVI Trench Location

Notes:
 1. Imagery Source: Drone Survey, June 2023.



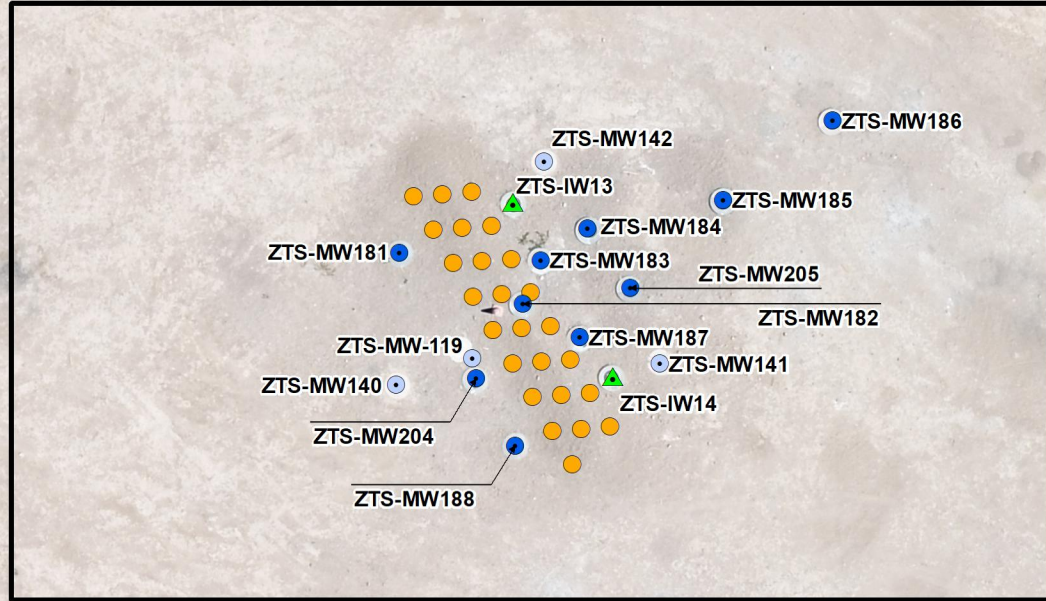
TETRA TECH
 www.tetrattech.com
 150 S. 4th Street, Unit A
 Henderson, Nevada 89015
 Phone: (702) 854-2293

NEVADA ENVIRONMENTAL RESPONSE TRUST
 LAS VEGAS WASH ZVI-ENHANCED BIOREMEDIATION TREATABILITY STUDY
 HENDERSON, NEVADA
TREATABILITY STUDY LAYOUT

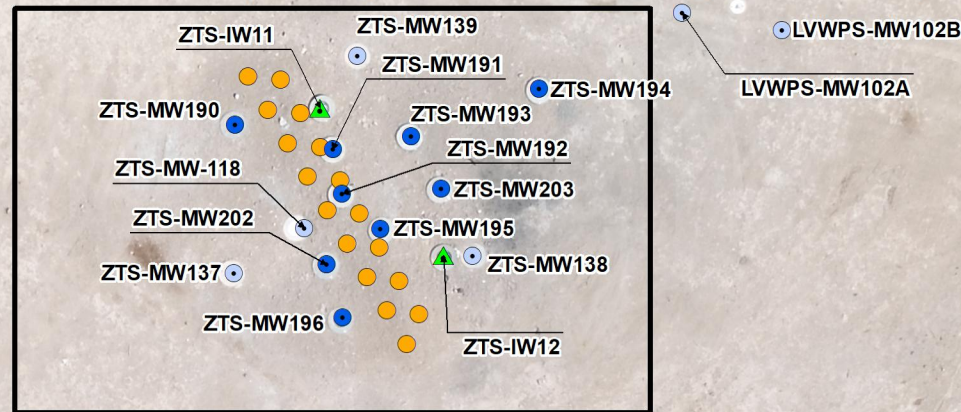
PROJECT NO.: 117-7502022-M18
 DATE: AUGUST 14, 2023
 DESIGNED BY: AAM
 Figure No.
1

DOCUMENT PATH: D:\NERT\18\MONTHLY REPORT\POST\FIGURE 1_TREATABILITY.MXD

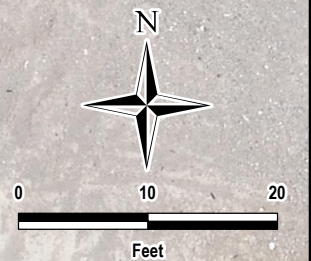
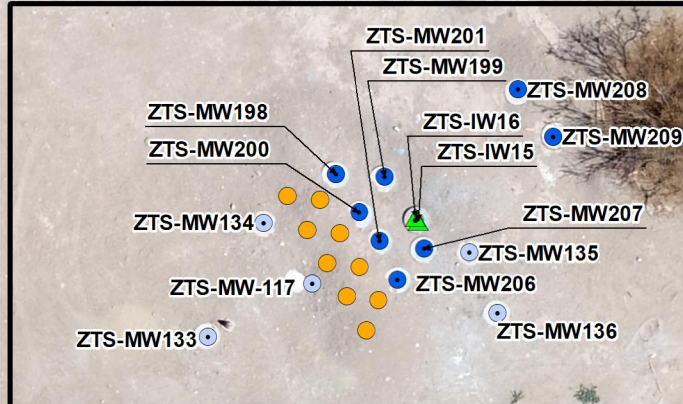
Test 2c Area (Borings ZTS-BH01 through ZTS-BH25)



Test 2a Area (Borings ZTS-BH26 through ZTS-BH42)



Test 2b Area (Borings ZTS-BH43 through ZTS-BH51)



Legend	
	Post-Construction Monitoring Well
	Inoculum Injection Well
	ZVI Boring
	Existing Monitoring Well

Notes:
1. Imagery Source: Drone Survey, June 2023.



www.tetrattech.com
150 S. 4th Street, Unit A
Henderson, Nevada 89015
Phone: (702) 854-2293

NEVADA ENVIRONMENTAL RESPONSE TRUST

LAS VEGAS WASH ZVI-ENHANCED BIOREMEDIATION TREATABILITY STUDY
HENDERSON, NEVADA

TEST AREA 2a/2b/2c LAYOUT

PROJECT NO.: 117-7502022-M18
DATE: AUGUST 14, 2023
DESIGNED BY: AAM

Figure No.
2b

Tables

Table 1
Well Construction Details
 Las Vegas Wash ZVI-Enhanced Bioremediation Treatability Study

Well ID	Screened Lithology	Northing	Easting	Ground Surface Elevation	Top of Casing Elevation	Depth to Water ¹	Groundwater Elevation	Casing Material	Slot Size	Filter Pack Gradation	Nominal Borehole Diameter	Borehole Total Depth	Well Diameter	Nominal Screen Length	Well Total Depth	Bottom of Screen	Top of Screen
				feet amsl	feet amsl	ft bTOC	amsl		inches		inches	feet bgs	inches	feet	feet bgs	feet bgs	feet bgs
Test Area 1A																	
ZTS-MW124R	Alluvium	26732932.91	833021.97	1545.35	1545.24	16.94	1528.30	Schedule 40 PVC	0.020	#3	8	35.0	4	10.0	34.5	34.0	24.5
ZTS-MW125	UMCf	26732907.80	833037.00	1546.94	1546.51	17.84	1528.67	Schedule 40 PVC	0.010	#2/16	8	75	4	10	50.5	50	40
ZTS-MW143	Alluvium	26732906.40	832992.60	1545.04	1544.90	16.13	1528.77	Schedule 40 PVC	0.020	#3	6	35	2	10	33.5	33	23
ZTS-MW144	Alluvium	26732926.25	833081.32	1544.47	1544.52	16.85	1527.67	Schedule 40 PVC	0.020	#3	6	40	2	10	34.5	34	24
ZTS-MW149	Alluvium	26732967.42	833052.83	1544.31	1544.20	16.38	1527.82	Schedule 40 PVC	0.020	#3	6	35.0	2	10.0	33.5	33.0	23.3
ZTS-MW150	Alluvium	26732939.76	833034.23	1546.83	1546.74	18.70	1528.04	Schedule 40 PVC	0.020	#3	6	45.0	2	10.0	34.5	34.0	24.3
ZTS-MW151	Alluvium	26732943.59	833042.18	1545.72	1545.62	17.75	1527.87	Schedule 40 PVC	0.020	#3	6	37.5	2	10.0	34.5	34.0	24.3
ZTS-MW152	Alluvium	26732931.70	833056.48	1545.63	1545.50	17.81	1527.69	Schedule 40 PVC	0.020	#3	6	35.0	2	10.0	33.5	33.0	23.3
ZTS-MW153	Alluvium	26732912.34	833034.31	1545.73	1545.61	17.38	1528.23	Schedule 40 PVC	0.020	#3	6	40.0	2	10.0	34.5	34.0	24.3
ZTS-MW154	Alluvium	26732911.74	833046.57	1546.73	1546.62	18.72	1527.90	Schedule 40 PVC	0.020	#3	6	42.5	2	10.0	32.5	32.0	22.3
ZTS-MW155	Alluvium	26732920.46	833050.08	1545.97	1545.89	18.18	1527.71	Schedule 40 PVC	0.020	#3	6	40.0	2	15.0	35.5	35.0	20.3
ZTS-MW156	UMCf	26732909.63	833056.38	1546.34	1546.30	18.52	1527.78	Schedule 40 PVC	0.010	#2/16	6	55.0	2	10.0	54.0	53.5	43.8
ZTS-MW157	Alluvium	26732918.81	833061.15	1545.95	1545.87	18.21	1527.66	Schedule 40 PVC	0.020	#3	6	35.0	2	10.0	33.5	33.0	23.3
ZTS-MW158	Alluvium	26732936.67	833099.40	1544.15	1544.09	16.70	1527.39	Schedule 40 PVC	0.020	#3	6	35.0	2	10.0	33.5	33.0	23.3
ZTS-MW159	UMCf	26732930.97	833101.22	1544.36	1544.08	16.83	1527.25	Schedule 40 PVC	0.010	#2/16	6	50.0	48	10.0	49.0	48.5	38.8
ZTS-MW160	Alluvium	26732949.66	833141.96	1544.42	1544.11	16.86	1527.25	Schedule 40 PVC	0.020	#3	6	40.0	2	10.0	33.5	33.0	23.3
ZTS-MW161	Alluvium	26732968.87	833187.88	1544.23	1543.99	17.03	1526.96	Schedule 40 PVC	0.020	#3	6	45.0	2	10.0	34.5	34.0	24.3
ZTS-MW162	Alluvium	26732901.90	833066.48	1545.76	1545.61	17.94	1527.67	Schedule 40 PVC	0.020	#3	6	40.0	2	10.0	33.5	33.0	23.3
ZTS-MW163	Alluvium	26732879.80	833048.04	1546.23	1546.18	19.05	1527.13	Schedule 40 PVC	0.020	#3	6	40.0	2	10.0	34.5	34.0	24.3
ZTS-MW164	Alluvium	26732883.65	833057.93	1547.06	1546.96	17.90	1529.06	Schedule 40 PVC	0.020	#3	6	40.0	2	10.0	32.5	32.0	22.3
ZTS-MW165	Alluvium	26732886.70	833065.74	1545.63	1545.50	17.83	1527.67	Schedule 40 PVC	0.020	#3	6	38.0	2	10	32.5	32.0	22.3
Between Test Area 1A and Test Area 1B																	
ZTS-MW145	UMCf	26732845.93	833017.26	1547.43	1547.13	18.20	1528.93	Schedule 40 PVC	0.010	#2/16	8	50	4	10	49.5	49	39
ZTS-MW146	UMCf	26732879.40	833100.75	1548.63	1547.33	19.60	1527.73	Schedule 40 PVC	0.010	#2/16	8	55	4	10	51.5	51	41
Test Area 1B																	
ZTS-MW126	Alluvium	26732842.82	833063.07	1548.61	1548.47	19.35	1529.12	Schedule 40 PVC	0.020	#3	8	40	4	10	30.5	30	20
ZTS-MW127R	Alluvium	26732786.41	833082.92	1548.26	1548.18	19.80	1528.38	Schedule 40 PVC	0.020	#3	8	24.0	4	5.0	23.5	23.0	18.5
ZTS-MW147	Alluvium	26732796.25	833040.66	1547.65	1547.18	18.28	1528.90	Schedule 40 PVC	0.020	#3	6	35	2	10	30.0	29.5	19.5
ZTS-MW148	Alluvium	26732833.56	833119.27	1548.62	1548.41	20.49	1527.92	Schedule 40 PVC	0.020	#3	6	35	2	10	32.5	32.0	22.0
ZTS-MW166	Alluvium	26732847.93	833073.86	1548.22	1548.25	20.30	1527.95	Schedule 40 PVC	0.020	#3	6	38.0	2	10	30.0	29.5	19.8
ZTS-MW167	Alluvium	26732850.05	833079.50	1547.37	1547.33	19.43	1527.90	Schedule 40 PVC	0.020	#3	6	40.0	2	10.0	33.5	33.0	23.3
ZTS-MW168	Alluvium	26732839.48	833094.36	1547.52	1547.63	19.78	1527.85	Schedule 40 PVC	0.020	#3	6	32.0	2	10.0	30.5	30.0	20.3
ZTS-MW169	Alluvium	26732819.11	833076.48	1547.70	1547.57	19.44	1528.13	Schedule 40 PVC	0.020	#3	6	27.5	2	10.0	27.5	27.0	17.1
ZTS-MW170	UMCf	26732813.68	833079.28	1547.58	1547.45	19.32	1528.13	Schedule 40 PVC	0.010	#2/16	6	46.5	2	10.0	41.5	41.0	31.1
ZTS-MW171	Alluvium	26732819.11	833083.89	1548.61	1548.53	20.33	1528.20	Schedule 40 PVC	0.020	#3	6	35.0	2	10.0	29.5	29.0	19.3
ZTS-MW172	Alluvium	26732828.15	833088.77	1547.91	1547.74	19.77	1527.97	Schedule 40 PVC	0.020	#3	6	30.0	2	10.0	27.5	27.0	17.3
ZTS-MW173	UMCf	26732816.29	833094.22	1547.95	1547.78	19.77	1528.01	Schedule 40 PVC	0.010	#2/16	6	46.0	2	10.0	43.5	43.0	33.3
ZTS-MW174	Alluvium	26732825.33	833100.64	1548.30	1548.11	20.20	1527.91	Schedule 40 PVC	0.020	#3	6	31.5	2	10.0	30.0	29.5	19.8
ZTS-MW175	Alluvium	26732857.97	833178.91	1546.18	1546.25	19.24	1527.01	Schedule 40 PVC	0.020	#3	6	61.5	2	10.0	30.0	29.5	19.8
ZTS-MW176	Alluvium	26732876.92	833225.42	1543.90	1543.74	17.04	1526.70	Schedule 40 PVC	0.020	#3	6	32.0	2	10.0	30.0	29.5	19.8
ZTS-MW177	Alluvium	26732811.29	833106.07	1548.22	1548.12	20.17	1527.95	Schedule 40 PVC	0.020	#3	6	31.0	2	10.0	30.5	30.0	20.3
ZTS-MW178	Alluvium	26732791.95	833095.60	1549.21	1549.14	20.91	1528.23	Schedule 40 PVC	0.020	#3	6	34.0	2	10.0	28.0	27.5	17.8
ZTS-MW179	Alluvium	26732794.26	833102.47	1548.62	1548.45	20.23	1528.22	Schedule 40 PVC	0.020	#3	6	27.5	2	5.0	23.5	23.0	18.3
ZTS-MW180	Alluvium	26732784.25	833128.08	1548.42	1548.12	20.21	1527.91	Schedule 40 PVC	0.020	#3	6	25.0	2	5.0	23.0	22.5	17.8
LVWPS-MW107A	Alluvium	26732823.90	833144.18	1548.14	1547.58	19.96	1527.62	Schedule 40 PVC	0.020	#3	8	35.5	4	10	35.0	34.5	24.8
LVWPS-MW107B	UMCf	26732816.68	833144.44	1548.20	1547.82	16.61	1531.21	Schedule 40 PVC	0.010	#2/12	8	67.0	4	20	66.3	65.8	46.0
LVWPS-MW107C	UMCf (Semi-Cons)	26732819.93	833138.10	1548.33	1547.93	5.81	1542.12	Schedule 40 PVC	0.010	#2/12	6	121.0	2	20	120.5	120.0	100.3

Table 1
Well Construction Details
 Las Vegas Wash ZVI-Enhanced Bioremediation Treatability Study

Well ID	Screened Lithology	Northing	Easting	Ground Surface Elevation	Top of Casing Elevation	Depth to Water ¹	Groundwater Elevation	Casing Material	Slot Size	Filter Pack Gradation	Nominal Borehole Diameter	Borehole Total Depth	Well Diameter	Nominal Screen Length	Well Total Depth	Bottom of Screen	Top of Screen
				feet amsl	feet amsl	ft bTOC	amsl		inches		inches	feet bgs	inches	feet	feet bgs	feet bgs	feet bgs
Test Area 2A																	
ZTS-MW118	Alluvium	26732588.00	832939.61	1547.64	1547.41	16.34	1531.07	Schedule 40 PVC	0.020	#3	8	40	4	10	24	23.5	13.5
ZTS-MW137	Alluvium	26732584.41	832934.77	1547.68	1547.44	16.36	1531.08	Schedule 40 PVC	0.020	#3	6	28	2	10	24.5	24	14
ZTS-MW138	Alluvium	26732585.74	832953.21	1547.68	1547.35	16.37	1530.98	Schedule 40 PVC	0.020	#3	6	25	2	10	24.5	24	14
ZTS-MW139	Alluvium	26732601.13	832944.31	1547.36	1547.07	16.17	1530.90	Schedule 40 PVC	0.020	#3	6	30	2	10	23.5	23	13
ZTS-MW190	Alluvium	26732595.87	832934.90	1547.59	1547.32	16.32	1531.00	Schedule 40 PVC	0.020	#3	6	25.0	2	10.0	25.5	24.0	14.3
ZTS-MW191	Alluvium	26732593.97	832942.42	1548.18	1547.93	17.00	1530.93	Schedule 40 PVC	0.020	#3	6	30.0	2	10.0	25.0	24.5	14.8
ZTS-MW192	Alluvium	26732590.54	832943.15	1548.28	1548.11	17.16	1530.95	Schedule 40 PVC	0.020	#3	6	25.0	2	10.0	24.5	24.0	14.3
ZTS-MW193	Alluvium	26732594.97	832948.47	1547.64	1547.48	16.62	1530.86	Schedule 40 PVC	0.020	#3	6	25.0	2	10.0	23.8	23.3	13.6
ZTS-MW194	Alluvium	26732598.62	832958.35	1547.33	1547.38	16.65	1530.73	Schedule 40 PVC	0.020	#3	6	25.0	2	5.0	23.0	22.5	17.8
ZTS-MW195	Alluvium	26732587.81	832946.10	1548.38	1548.14	17.20	1530.94	Schedule 40 PVC	0.020	#3	6	25.0	2	10.0	24.5	24.0	14.3
ZTS-MW196	Alluvium	26732581.00	832943.16	1547.81	1547.34	16.29	1531.05	Schedule 40 PVC	0.020	#3	6	25.0	2	10.0	24.0	23.5	13.8
ZTS-MW197	Alluvium	26732619.07	832992.11	1547.27	1546.99	16.97	1530.02	Schedule 40 PVC	0.020	#3	6	25.0	2	10.0	23.0	22.5	12.8
ZTS-MW202	UMCf	26732585.08	832941.97	1547.83	1547.46	16.48	1530.98	Schedule 40 PVC	0.010	#2/16	6	40.0	2	10.0	39.0	38.5	28.8
ZTS-MW203	UMCf	26732590.95	832950.78	1547.77	1547.71	16.90	1530.81	Schedule 40 PVC	0.010	#2/16	6	45.0	2	10.0	38.5	38.0	28.3
LVWPS-MW102A	UMCf	26732606.35	832965.93	1547.23	1546.82	10.40	1536.42	Schedule 40 PVC	0.010	#2/12	6	67.5	2	20	67.1	66.6	47.0
LVWPS-MW102B	UMCf (Semi-Cons)	26732605.06	832973.68	1547.14	1546.78	4.77	1542.01	Schedule 40 PVC	0.010	#2/12	6	120.0	2	20	97.0	96.5	76.8
Test Area 2B																	
ZTS-MW117	UMCf	26732546.84	832964.21	1547.64	1547.32	14.75	1532.57	Schedule 40 PVC	0.010	#2/16	8	75	4	15	56	55.5	40.5
ZTS-MW133	UMCf	26732542.30	832957.28	1547.79	1547.51	11.11	1536.40	Schedule 40 PVC	0.010	#2/16	6	75	2	15	69.5	69	54
ZTS-MW134	UMCf	26732551.09	832961.57	1547.75	1547.54	16.31	1531.23	Schedule 40 PVC	0.010	#2/16	6	37	2	10	36.5	36	26
ZTS-MW135	UMCf	26732548.80	832977.51	1547.56	1547.42	10.76	1536.66	Schedule 40 PVC	0.010	#2/16	6	76	2	15	69.5	69	54
ZTS-MW136	UMCf	26732544.12	832979.70	1547.67	1547.29	16.01	1531.28	Schedule 40 PVC	0.010	#2/16	6	55	2	20	47.5	47	27
ZTS-MW198	UMCf	26732554.83	832967.16	1547.78	1547.69	16.64	1531.05	Schedule 40 PVC	0.010	#2/16	6	47.5	2	20.0	46.5	46.0	26.1
ZTS-MW199	UMCf	26732554.62	832970.93	1547.18	1546.84	10.53	1536.31	Schedule 40 PVC	0.010	#2/16	6	68.0	2	15.0	65.5	65.0	50.1
ZTS-MW200	UMCf	26732551.89	832968.94	1547.67	1547.57	11.41	1536.16	Schedule 40 PVC	0.010	#2/16	6	68.0	2	15.0	65.5	65.0	50.1
ZTS-MW201	UMCf	26732549.70	832970.52	1547.59	1547.29	16.03	1531.26	Schedule 40 PVC	0.010	#2/16	6	50.0	2	20.0	47.5	47.0	27.1
ZTS-MW206	UMCf	26732546.67	832971.91	1547.58	1547.61	11.34	1536.27	Schedule 40 PVC	0.010	#2/16	6	70.0	2	15.0	65.5	65.0	50.1
ZTS-MW207	UMCf	26732549.09	832973.98	1547.48	1547.43	16.33	1531.10	Schedule 40 PVC	0.010	#2/16	6	48.0	2	20.0	46.5	46.0	26.1
ZTS-MW208	UMCf	26732561.34	832981.27	1547.35	1547.21	16.41	1530.80	Schedule 40 PVC	0.010	#2/16	6	48.0	2	20.0	46.5	46.0	26.1
ZTS-MW209	UMCf	26732557.71	832983.97	1547.62	1547.30	11.00	1536.30	Schedule 40 PVC	0.010	#2/16	6	69.0	2	15.0	66.0	65.5	50.6
Test Area 2C																	
ZTS-MW119	Alluvium	26732634.25	832912.06	1547.46	1547.12	16.38	1530.74	Schedule 40 PVC	0.020	#3	8	37.5	4	10	25.5	25	15
ZTS-MW140	Alluvium	26732631.52	832907.03	1547.30	1546.73	15.94	1530.79	Schedule 40 PVC	0.020	#3	6	30	2	10	26.0	25.5	15.5
ZTS-MW141	Alluvium	26732633.15	832927.38	1547.65	1547.39	16.70	1530.69	Schedule 40 PVC	0.020	#3	6	30	2	10	25.0	24.5	14.5
ZTS-MW142	Alluvium	26732648.69	832918.45	1547.42	1546.81	16.21	1530.60	Schedule 40 PVC	0.020	#3	6	27	2	10	26.5	26	16
ZTS-MW181	Alluvium	26732641.70	832907.27	1547.62	1547.25	16.67	1530.58	Schedule 40 PVC	0.020	#3	6	27.5	2	10.0	27.5	27.0	17.3
ZTS-MW182	Alluvium	26732637.76	832916.80	1548.07	1547.79	17.17	1530.62	Schedule 40 PVC	0.020	#3	6	35.0	2	10.0	27.8	27.3	17.6
ZTS-MW183	Alluvium	26732641.13	832918.19	1547.72	1547.58	17.00	1530.58	Schedule 40 PVC	0.020	#3	6	28.0	2	10.0	27.5	27.0	17.3
ZTS-MW184	Alluvium	26732643.60	832921.80	1547.60	1547.53	17.02	1530.51	Schedule 40 PVC	0.020	#3	6	27.5	2	10.0	26.5	26.0	16.3
ZTS-MW185	Alluvium	26732645.77	832932.26	1547.59	1547.60	17.11	1530.49	Schedule 40 PVC	0.020	#3	6	27.5	2	10.0	25.5	25.0	15.3
ZTS-MW186	Alluvium	26732651.85	832940.71	1547.27	1547.26	16.87	1530.39	Schedule 40 PVC	0.020	#3	6	27.0	2	10.0	25.5	25.0	15.3
ZTS-MW187	Alluvium	26732635.16	832921.20	1547.70	1547.25	16.70	1530.55	Schedule 40 PVC	0.020	#3	6	28.0	2	10.0	25.5	25.0	15.3
ZTS-MW188	Alluvium	26732626.83	832916.22	1547.30	1546.93	16.25	1530.68	Schedule 40 PVC	0.020	#3	6	27.5	2	10.0	27.5	27.0	17.3
ZTS-MW189	Alluvium	26732654.00	832963.19	1547.16	1547.14	16.98	1530.16	Schedule 40 PVC	0.020	#3	6	27.5	2	10.0	23.5	23.0	12.8
ZTS-MW204	UMCf	26732632.00	832913.21	1547.40	1546.87	16.35	1530.52	Schedule 40 PVC	0.010	#2/16	6	42.5	2	10.0	40.5	40.0	30.3
ZTS-MW205	UMCf	26732638.98	832925.09	1547.61	1547.30	17.00	1530.30	Schedule 40 PVC	0.010	#2/16	6	42.5	2	10.0	40.5	40.0	30.3
General Vicinity																	
ZTS-MW116	UMCf	26732461.29	833014.94	1548.45	1547.92	16.31	1531.61	Schedule 40 PVC	0.010	#2/16	6	55	2	15	48.5	48	33
ZTS-MW128	UMCf	26732659.68	833137.95	1555.83	1555.41	26.67	1528.74	Schedule 40 PVC	0.010	#2/16	6	75	2	10	52.5	52	42

Table 1
Well Construction Details
 Las Vegas Wash ZVI-Enhanced Bioremediation Treatability Study

Well ID	Screened Lithology	Northing	Easting	Ground Surface Elevation	Top of Casing Elevation	Depth to Water ¹	Groundwater Elevation	Casing Material	Slot Size	Filter Pack Gradation	Nominal Borehole Diameter	Borehole Total Depth	Well Diameter	Nominal Screen Length	Well Total Depth	Bottom of Screen	Top of Screen
				feet amsl	feet amsl	ft bTOC	amsl		inches		inches	feet bgs	inches	feet	feet bgs	feet bgs	feet bgs
Injection Wells																	
ZTS-IW01	Alluvium	26732954.69	833038.19	1545.73	1545.62	NM	NM	Schedule 40 PVC	0.020	#3	6	40.0	2	15.0	36.0	35.5	20.8
ZTS-IW02	Alluvium	26732933.88	833046.37	1545.63	1545.70	NM	NM	Schedule 40 PVC	0.020	#3	6	37.5	2	15.0	35.5	35.0	20.3
ZTS-IW03	Alluvium	26732913.63	833053.06	1546.39	1546.35	NM	NM	Schedule 40 PVC	0.020	#3	6	40.0	2	15.0	36.0	35.5	20.8
ZTS-IW04	Alluvium	26732895.95	833061.35	1545.81	1545.64	NM	NM	Schedule 40 PVC	0.020	#3	6	38.0	2	15.0	36.0	35.5	20.8
ZTS-IW05	Alluvium	26732877.62	833068.66	1546.34	1546.32	NM	NM	Schedule 40 PVC	0.020	#3	6	37.5	2	15.0	36.0	35.5	20.8
ZTS-IW06	Alluvium	26732858.63	833075.96	1547.14	1546.96	NM	NM	Schedule 40 PVC	0.020	#3	6	35.0	2	15.0	35.0	34.5	19.8
ZTS-IW07	Alluvium	26732840.03	833083.70	1547.73	1547.48	NM	NM	Schedule 40 PVC	0.020	#3	6	30.0	2	5.0	27.5	27.0	22.3
ZTS-IW08	Alluvium	26732822.00	833091.44	1547.88	1547.75	NM	NM	Schedule 40 PVC	0.020	#3	6	31.0	2	5.0	27.5	27.0	22.3
ZTS-IW09	Alluvium	26732803.17	833098.78	1548.14	1548.30	NM	NM	Schedule 40 PVC	0.020	#3	6	27.0	2	5.0	26.5	26.0	21.3
ZTS-IW10	Alluvium	26732784.72	833106.32	1548.63	1548.48	NM	NM	Schedule 40 PVC	0.020	#3	6	25.0	2	5.0	25.0	24.5	19.8
ZTS-IW11	Alluvium	26732597.13	832941.47	1547.80	1547.86	NM	NM	Schedule 40 PVC	0.020	#3	6	25.0	2	5.0	23.5	23.0	18.3
ZTS-IW12	Alluvium	26732585.78	832951.00	1547.51	1547.54	NM	NM	Schedule 40 PVC	0.020	#3	6	26.0	2	5.0	25.0	24.5	19.8
ZTS-IW13	Alluvium	26732645.58	832916.08	1547.54	1547.64	NM	NM	Schedule 40 PVC	0.020	#3	6	30.0	2	10.0	29.5	29.0	19.3
ZTS-IW14	Alluvium	26732632.18	832923.75	1547.50	1547.55	NM	NM	Schedule 40 PVC	0.020	#3	6	30.0	2	10.0	27.3	26.8	17.1
ZTS-IW15	UMCf	26732551.24	832973.58	1547.33	1547.34	NM	NM	Schedule 40 PVC	0.010	#2/16	10	68.0	2	15.0	46.5	46.0	26.3
ZTS-IW16	UMCf	26732551.53	832973.34	1547.37	1547.44	NM	NM	Schedule 40 PVC	0.010	#2/16			2	20.0	67.5	67.0	52.3

Notes
 amsl - above mean sea level
 bgs - below ground surface
 bTOC - below top of casing
 NM - not measured
 PVC - polyvinyl chloride
 UMCf - Upper Muddy Creek formation
 Semi-Cons - Semi-Consolidated
 1. Depth to water collected on May 16-17, 2023.