

Table 1 - Seep Well Field (SWF) Operational Metrics

Nevada Environmental Response Trust Groundwater Extraction and Treatment System Enhanced Operational Metrics																				
Date	LS #1 Flow ³ (gpm)	PC-116R (East Well)		PC-99R2/R3 (Center Well)		PC-115R (West Well)		PC-117		PC-118		PC-119		PC-120		PC-121		PC-133		
		Flow ³ (gpm)	Water Elevation (ft amsl)	Flow ³ (gpm)	Water Elevation (ft amsl)	Flow ³ (gpm)	Water Elevation (ft amsl)	Flow ³ (gpm)	Water Elevation (ft amsl)	Flow (gpm)	Water Elevation (ft amsl)	Flow (gpm)	Water Elevation (ft amsl)	Flow (gpm)	Water Elevation (ft amsl)	Flow (gpm)	Water Elevation (ft amsl)	Flow (gpm)	Water Elevation (ft amsl)	Flow (gpm)
10/01/22	484	158	1536.15	78	1543.46	129	1542.69	107	1533.16	65	1547.93	109	1548.58	51	1549.64	20	1550.93	6.6	< 1520.00	
10/02/22	484	158	1536.12	78	1543.35	129	1542.67	107	1533.14	65	1547.91	109	1548.56	51	1549.62	20	1550.91	6.7	< 1520.00	
10/03/22	484	158	1536.10	78	1543.33	129	1542.65	107	1533.12	65	1547.90	108	1548.54	51	1549.60	20	1550.89	6.7	< 1520.00	
10/04/22	484	158	1536.09	78	1543.33	129	1542.64	107	1533.11	65	1547.88	108	1548.53	51	1549.58	20	1550.87	6.7	< 1520.00	
10/05/22	484	158	1536.07	78	1543.34	129	1542.62	107	1533.09	65	1547.87	108	1548.51	51	1549.57	20	1550.86	6.7	< 1520.00	
10/06/22	484	158	1536.06	78	1543.33	129	1542.61	107	1533.07	65	1547.86	108	1548.50	51	1549.56	20	1550.84	6.7	< 1520.00	
10/07/22	486	158	1536.05	78	1543.34	129	1542.60	107	1533.06	65	1547.85	108	1548.49	51	1549.54	20	1550.83	6.7	< 1520.00	
10/08/22	485	158	1536.04	78	1543.35	129	1542.60	107	1533.05	65	1547.84	108	1548.48	51	1549.54	20	1550.82	6.8	< 1520.00	
10/09/22	484	158	1536.02	78	1543.34	129	1542.59	107	1533.04	65	1547.83	108	1548.47	51	1549.53	20	1550.81	6.7	< 1520.00	
10/10/22	484	158	1536.01	78	1543.33	129	1542.59	107	1533.03	65	1547.82	108	1548.47	51	1549.52	20	1550.81	6.7	< 1520.00	
10/11/22	485	158	1536.00	78	1543.33	129	1542.58	107	1533.02	65	1547.82	108	1548.46	51	1549.51	20	1550.80	6.8	< 1520.00	
10/12/22 ²	450	144	1537.15	71	1543.88	118	1543.19	99	1534.21	60	1548.16	99	1548.77	47	1549.76	18	1550.97	7.0	< 1520.00	
10/13/22	476	158	1536.28	77	1543.61	129	1542.70	106	1533.35	65	1547.78	108	1548.52	51	1549.57	20	1550.85	7.3	< 1520.00	
10/14/22	476	158	1536.20	77	1543.58	129	1542.66	106	1533.29	65	1547.77	108	1548.49	51	1549.55	20	1550.82	7.1	< 1520.00	
10/15/22	476	158	1536.16	77	1543.57	129	1542.64	106	1533.25	65	1547.76	108	1548.48	51	1549.53	20	1550.80	7.0	< 1520.00	
10/16/22	477	158	1536.13	77	1543.57	129	1542.63	106	1533.23	65	1547.75	108	1548.46	51	1549.52	20	1550.79	7.1	< 1520.00	
10/17/22	477	158	1536.12	77	1543.56	129	1542.62	106	1533.21	65	1547.74	108	1548.46	51	1549.51	20	1550.79	7.1	< 1520.00	
10/18/22	477	158	1536.12	77	1543.56	129	1542.61	106	1533.19	65	1547.74	108	1548.45	51	1549.50	20	1550.78	7.1	< 1520.00	
10/19/22	477	158	1536.11	77	1543.55	129	1542.60	106	1533.18	65	1547.74	108	1548.44	51	1549.50	20	1550.77	7.1	< 1520.00	
10/20/20 ³	296	113	1539.57	61	1546.52	95	1544.32	76	1537.46	65	1548.09	109	1548.80	51	1549.77	20	1550.98	7.2	< 1520.00	
10/21/22	469	158	1536.35	74	1544.59	126	1542.91	107	1533.26	65	1547.87	108	1548.59	51	1549.63	20	1550.89	7.1	< 1520.00	
10/22/22	466	158	1536.25	73	1544.52	126	1542.86	107	1533.19	65	1547.84	108	1548.56	51	1549.59	20	1550.86	7.1	< 1520.00	
10/23/22	466	158	1536.17	73	1544.45	126	1542.81	107	1533.13	65	1547.80	108	1548.51	51	1549.55	20	1550.82	7.0	< 1520.00	
10/24/22	466	158	1536.18	73	1544.41	126	1542.79	107	1533.11	65	1547.78	108	1548.49	51	1549.53	20	1550.80	7.1	< 1520.00	
10/25/22	474	158	1536.30	73	1544.47	126	1542.81	107	1533.10	65	1547.79	108	1548.49	51	1549.54	20	1550.81	7.2	< 1520.00	
10/26/22	479	158	1536.28	73	1544.42	126	1542.80	107	1533.07	65	1547.80	108	1548.49	51	1549.54	20	1550.81	7.2	< 1520.00	
10/27/22	473	158	1536.22	73	1544.42	126	1542.78	107	1533.04	65	1547.79	108	1548.47	51	1549.52	20	1550.79	7.3	< 1520.00	
10/28/22	474	158	1536.21	73	1544.41	126	1542.78	107	1533.03	65	1547.78	108	1548.47	51	1549.52	20	1550.78	7.3	< 1520.00	
10/29/22	473	158	1536.20	73	1544.40	126	1542.78	107	1533.02	65	1547.78	108	1548.47	51	1549.52	20	1550.78	7.3	< 1520.00	
10/30/22	474	158	1536.17	73	1544.39	126	1542.77	107	1533.00	65	1547.78	108	1548.46	51	1549.52	20	1550.78	7.3	< 1520.00	
10/31/22	474	158	1536.15	73	1544.38	126	1542.77	107	1533.00	65	1547.78	108	1548.46	51	1549.52	20	1550.78	7.3	< 1520.00	
Monthly Average	471	156	1536.29	75	1543.91	126	1542.76	106	1533.30	65	1547.83	108	1548.51	51	1549.56	20	1550.83	7.0	< 1520.00	
Analytical	Conc (mg/L)		Date		Conc (mg/L)		Date		Conc (mg/L)		Date		Conc (mg/L)		Date		Conc (mg/L)		Date	
	Perchlorate	15	10/5/2022	21	10/5/2022	13	10/5/2022	5.2	10/5/2022	4.6	10/5/2022	1.1	10/5/2022	0.15	10/5/2022	0.23	10/5/2022	1.2	10/5/2022	
Hexavalent Chromium	0.010	10/5/2022	0.0019	10/5/2022	ND	10/5/2022	0.0087	10/5/2022	0.0030	10/5/2022	ND	10/5/2022	ND	10/5/2022	ND	10/5/2022	0.0053	10/5/2022		
Total Chromium	0.0073	10/5/2022	0.0017	10/5/2022	ND	10/5/2022	0.0070	10/5/2022	ND	10/5/2022	ND	10/5/2022	ND	10/5/2022	ND	10/5/2022	ND	10/5/2022		

Notes:
 Flow reported as gpm is a daily average calculated from the totalizer reading.
 ND = Not detected above laboratory method detection limit (Cr(TR)=2.5 ug/L; Cr(VI) =0.20 ug/L).
 J = Result is less than the reporting limit but greater than or equal to the method detection limit and the concentration is an approximate value.
 1: Analytical results are reported from Eurofins TestAmerica.
 2: On 10/12, SWF offline due to maintenance.
 3: On 10/20, LS #1 offline; All SWF wells sent to IX; PC-116R, PC-99R2/R3, PC-115R, and PC-117 flows reduced.
 4: Duplicates taken on 10/05 for well PC-133; average of both values is presented and used for calculations.

Nevada Environmental Response Trust Groundwater Extraction and Treatment System Enhanced Operational Metrics																	
Date	LS #3 Flow (gpm)	ART-1/1A		ART-2/2A		ART-3/3A		ART-4/4A		ART-9		ART-7A/7B		ART-8/8A		PC-150	
		Flow ² (gpm)	Water Elevation (ft amsl)	Flow ² (gpm)	Water Elevation (ft amsl)	Flow (gpm)	Water Elevation (ft amsl)	Flow ² (gpm)	Water Elevation (ft amsl)	Flow (gpm)	Water Elevation (ft amsl)	Flow (gpm)	Water Elevation (ft amsl)	Flow ² (gpm)	Water Elevation (ft amsl)	Flow ⁴ (gpm)	Water Elevation (ft amsl)
10/01/22	397	42	1584.22	141	1584.06	22	1582.93	3.7	1578.83	38	1576.68	26	1579.58	172	1581.38	1.5	1578.70
10/02/22	397	42	1584.23	141	1584.07	22	1582.94	3.7	1578.83	38	1576.69	26	1579.66	172	1581.55	1.5	1578.70
10/03/22	397	42	1584.23	141	1584.07	22	1582.94	3.7	1579.11	38	1576.70	26	1579.73	172	1581.61	1.5	1578.70
10/04/22	397	42	1584.23	141	1584.08	22	1582.95	3.7	1578.83	38	1576.69	26	1579.75	172	1581.62	1.5	1578.70
10/05/22	397	42	1584.24	141	1584.09	22	1582.95	3.7	1578.84	38	1576.67	26	1579.78	172	1581.62	1.5	1578.70
10/06/22	397	42	1584.24	141	1584.09	22	1582.96	3.7	1578.83	39	1576.62	26	1579.84	172	1581.63	1.5	1578.70
10/07/22	397	42	1584.25	141	1584.10	22	1582.96	3.7	1578.83	39	1576.62	26	1579.86	172	1581.63	1.5	1578.70
10/08/22	397	42	1584.25	141	1584.11	22	1582.97	3.8	1578.83	39	1576.61	26	1579.84	172	1581.64	1.5	1578.70
10/09/22	397	42	1584.26	141	1584.11	22	1582.97	3.8	1578.83	38	1576.61	26	1579.81	172	1581.64	1.5	1578.70
10/10/22	397	42	1584.26	141	1584.12	22	1582.98	3.8	1578.83	38	1576.62	26	1579.73	172	1581.65	1.5	1578.70
10/11/22	397	42	1584.27	141	1584.13	22	1582.98	3.8	1578.83	38	1576.62	26	1579.72	172	1581.65	1.5	1578.70
10/12/22	398	42	1584.27	141	1584.13	22	1582.99	3.8	1578.83	38	1576.61	26	1579.81	172	1581.66	1.5	1578.70
10/13/22	397	42	1584.28	141	1584.14	22	1583.00	3.8	1578.83	38	1576.61	26	1579.75	172	1581.67	1.5	1578.70
10/14/22	397	42	1584.28	141	1584.15	22	1583.00	3.8	1578.83	38	1576.60	26	1579.62	172	1581.67	1.5	1578.70
10/15/22	397	42	1584.28	142	1584.15	22	1583.00	3.8	1578.83	39	1576.60	26	1579.63	172	1581.67	1.5	1578.70
10/16/22	397	42	1584.28	141	1584.15	22	1583.00	3.8	1578.83	38	1576.60	26	1579.75	172	1581.67	1.5	1578.70
10/17/22	397	42	1584.29	141	1584.15	22	1583.01	3.8	1578.83	38	1576.61	26	1579.82	172	1581.68	1.5	1578.70
10/18/22	397	42	1584.29	141	1584.15	22	1583.01	3.8	1578.83	38	1576.60	26	1579.87	172	1581.68	1.5	1578.70
10/19/22	397	42	1584.29	141	1584.16	22	1583.01	3.8	1578.82	38	1576.61	26	1579.88	172	1581.68	1.5	1578.70
10/20/22	397	42	1584.29	141	1584.16	22	1583.02	3.8	1578.82	38	1576.60	26	1579.77	172	1581.69	1.5	1578.70
10/21/22	397	42	1584.30	141	1584.17	22	1583.02	3.8	1578.82	39	1576.59	26	1579.62	172	1581.70	1.5	1578.70
10/22/22	397	42	1584.30	141	1584.18	22	1583.03	3.8	1578.83	38	1576.60	26	1579.31	172	1581.70	1.5	1578.70
10/23/22	396	42	1584.28	142	1584.16	22	1583.01	3.8	1578.82	38	1576.60	26	1579.63	172	1581.69	1.5	1578.69
10/24/22	397	42	1584.28	141	1584.15	22	1583.01	3.8	1578.82	38	1576.59	26	1579.98	172	1581.68	1.5	1578.70
10/25/22	393	42	1572.72	140	1584.21	21	1583.01	3.7	1578.91	38	1576.59	26	1579.84	170	1580.72	1.5	1578.70
10/26/22	398	42	1580.43	142	1584.17	21	1583.00	3.8	1580.71	38	1576.60	26	1579.67	173	1583.51	1.5	1578.70
10/27/22	397	42	1584.26	142	1584.14	21	1582.98	3.8	1579.74	38	1576.59	26	1579.90	173	1583.49	1.5	1578.70
10/28/22	397	42	1584.26	142	1584.14	21	1582.98	3.8	1579.86	38	1576.59	26	1579.99	173	1583.49	1.5	1578.70
10/29/22	397	42	1584.26	142	1584.14	21	1582.98	3.8	1579.16	38	1576.59	26	1579.90	173	1583.49	1.5	1578.70
10/30/22	397	42	1584.26	142	1584.14	21	1582.98	3.8	1579.55	38	1576.59	26	1579.80	173	1583.49	1.5	1578.70
10/31/22	397	42	1584.26	142	1584.14	21	1582.99	3.8	1578.93	38	1576.59	26	1579.71	173	1583.49	1.5	1578.70
Monthly Average	397	42	1583.77	141	1584.13	22	1582.99	3.8	1579.00	38	1576.62	26	1579.76	172	1581.97	1.5	1578.70
Analytical	Conc (mg/L)	Date	Conc (mg/L)	Date	Conc (mg/L)	Date	Conc (mg/L)	Date	Conc (mg/L)	Date	Conc (mg/L)	Date	Conc (mg/L)	Date	Conc (mg/L)	Date	
Perchlorate	23	10/5/2022	7.2	10/5/2022	160	10/5/2022	100	10/5/2022	170	10/5/2022	81	10/5/2022	59	10/5/2022	35	10/5/2022	
Hexavalent Chromium	ND	10/5/2022	0.0028	10/5/2022	0.30	10/5/2022	0.15	10/5/2022	0.60	10/5/2022	0.46	10/5/2022	0.062	10/5/2022	0.038	10/5/2022	
Total Chromium	ND	10/5/2022	ND	10/5/2022	0.27	10/5/2022	0.13	10/5/2022	0.55	10/5/2022	0.43	10/5/2022	0.051	10/5/2022	0.033	10/5/2022	

Notes:
 Flow reported as gpm is a daily average calculated from the totalizer reading.
 ND = Not detected above laboratory method detection limit (ClO⁴ = 0.5 ug/L; ClO³ = 10 ug/L; NO³-N = 0.055 mg/L; Cr(VI) = 0.25 ug/L).
 ART-1, 2, 3, 4, 7B, and 8 have adjacent recovery wells, both of which can be used for extraction. The pumping well can be chosen manually or automatically, based on operational considerations.
 The wells with transducers are ART-1, -2, -3, -4, -7A, -8, -9, and PC-150.
 1: Analytical results are reported from Eurofins TestAmerica.
 2: On 10/25, ART-1 switched to ART-1A temporarily; ART-2/2A, ART-4, and ART-8 offline briefly.
 3: Duplicates taken on 10/05 for well ART-4; average of both values is presented and used for calculations.
 4: Conducted periodic bucket tests to confirm flow rates for PC-150. Average flow of 1.5 gpm determined from flow tests is presented for 10/01-10/30 flows and used for calculation purposes. Flow was steady throughout the month but the totalizer showed zero flow because totalizer units are 1,000 gallons.

Nevada Environmental Response Trust Groundwater Extraction and Treatment System Enhanced Operational Metrics																				
Date	I-AR		I-AA		I-AB		I-AC		I-AD		I-B		I-C		I-D ^{4,5,6,7,8}		I-E ^{5,6,8}		I-F ^{3,4,6,7,9}	
	Flow (gpm)	Water Elevation (ft amsl)	Flow (gpm)	Water Elevation (ft amsl)	Flow (gpm)	Water Elevation (ft amsl)	Flow (gpm)	Water Elevation (ft amsl)	Flow ³ (gpm)	Water Elevation (ft amsl)	Flow (gpm)	Water Elevation (ft amsl)	Flow (gpm)	Water Elevation (ft amsl)	Flow (gpm)	Water Elevation (ft amsl)	Flow (gpm)	Water Elevation (ft amsl)	Flow (gpm)	Water Elevation (ft amsl)
10/01/22	0.15	1717.11	0.88	1707.66	0.0	1718.72	0.0	1723.43	0.60	1721.01	0.36	1709.53	2.7	1708.74	0.98	1708.85	1.0	1713.38	2.8	1708.93
10/02/22	0.15	1717.26	0.88	1707.66	0.0	1718.70	0.0	1723.39	0.59	1721.06	0.34	1709.53	2.7	1708.74	0.97	1708.50	1.0	1713.49	2.7	1708.94
10/03/22	0.14	1717.42	0.87	1707.66	0.0	1718.65	0.0	1723.39	0.59	1721.08	0.33	1709.53	2.7	1708.74	0.92	1709.06	1.0	1713.50	2.6	1708.95
10/04/22	0.12	1718.62	0.87	1707.66	0.0	1718.63	0.0	1723.38	0.58	1721.10	0.34	1709.53	2.7	1708.74	0.82	1711.05	0.99	1713.60	2.5	1708.96
10/05/22	0.13	1718.45	0.87	1707.65	0.0	1718.59	0.02	1722.52	0.58	1721.09	0.33	1709.53	2.7	1708.73	0.75	1711.85	0.98	1713.67	2.5	1708.97
10/06/22	0.13	1718.23	0.87	1707.65	0.0	1718.62	0.0	1723.71	0.59	1721.06	0.32	1709.52	2.7	1708.72	0.69	1712.48	0.97	1713.76	2.4	1708.97
10/07/22	0.13	1718.27	0.87	1707.65	0.0	1718.62	0.0	1723.68	0.59	1721.07	0.32	1709.52	2.7	1708.72	0.63	1713.02	0.80	1714.98	2.4	1708.97
10/08/22	0.15	1717.69	0.87	1707.67	0.0	1718.62	0.0	1723.67	0.58	1721.08	0.32	1709.52	2.7	1708.72	0.59	1713.35	0.79	1715.05	2.4	1708.98
10/09/22	0.17	1716.78	0.87	1707.65	0.0	1718.62	0.0	1723.66	0.58	1721.10	0.31	1709.52	2.7	1708.72	0.57	1713.54	0.79	1715.09	2.4	1708.99
10/10/22	0.19	1715.53	0.87	1707.65	0.0	1718.62	0.0	1723.68	0.58	1721.11	0.32	1709.52	2.7	1708.72	0.75	1711.04	0.77	1715.21	2.4	1708.99
10/11/22	0.18	1715.40	0.87	1707.65	0.0	1718.62	0.0	1723.68	0.58	1721.12	0.32	1709.52	2.7	1708.72	1.0	1706.39	0.75	1715.37	2.4	1708.97
10/12/22	0.17	1715.73	0.87	1707.65	0.0	1718.62	0.0	1723.66	0.57	1721.14	0.31	1709.52	2.7	1708.72	0.91	1708.72	0.71	1715.70	2.6	1708.94
10/13/22	0.17	1715.97	0.87	1707.65	0.0	1718.63	0.0	1723.69	0.57	1721.15	0.33	1709.52	2.7	1708.72	0.83	1710.61	0.66	1716.13	2.8	1708.92
10/14/22	0.17	1716.07	0.87	1707.65	0.0	1718.64	0.0	1723.71	0.57	1721.17	0.33	1709.52	2.7	1708.72	0.78	1711.50	0.62	1716.40	2.9	1708.85
10/15/22	0.17	1716.17	0.87	1707.64	0.0	1718.64	0.0	1723.73	0.56	1721.18	0.33	1709.52	2.7	1708.72	0.74	1712.04	0.58	1716.74	3.0	1708.80
10/16/22	0.17	1716.26	0.87	1707.64	0.0	1718.64	0.0	1723.71	0.56	1721.18	0.37	1709.52	2.7	1708.72	0.71	1712.41	0.54	1717.00	3.0	1708.72
10/17/22	0.17	1716.36	0.87	1707.64	0.0	1718.65	0.0	1723.68	0.56	1721.20	0.39	1709.52	2.7	1708.72	0.93	1708.57	0.85	1714.75	3.0	1708.74
10/18/22	0.17	1716.30	0.87	1707.64	0.0	1718.67	0.0	1723.68	0.56	1721.23	0.38	1709.52	2.7	1708.72	0.92	1708.69	1.0	1713.49	2.7	1708.94
10/19/22	0.17	1716.25	0.87	1707.64	0.0	1718.68	0.0	1723.69	0.55	1721.23	0.34	1709.66	2.7	1708.72	0.84	1710.40	0.96	1713.88	2.5	1708.97
10/20/22	0.18	1716.26	0.87	1707.64	0.0	1718.69	0.0	1723.72	0.55	1721.25	0.36	1709.54	2.7	1708.72	0.95	1707.95	1.0	1712.20	2.4	1708.98
10/21/22	0.18	1715.92	0.87	1707.65	0.0	1718.70	0.0	1723.73	0.55	1721.25	0.38	1709.55	2.7	1708.72	0.89	1708.82	1.0	1712.94	2.3	1709.08
10/22/22	0.20	1715.33	0.87	1707.65	0.0	1718.71	0.0	1723.80	0.55	1721.30	0.40	1709.56	2.7	1708.72	0.76	1711.35	1.0	1713.32	2.3	1709.00
10/23/22	0.17	1715.88	0.87	1707.64	0.0	1718.66	0.0	1723.97	0.54	1721.29	0.39	1709.54	2.7	1708.72	0.85	1709.54	0.99	1713.52	2.3	1709.08
10/24/22 ²	0.14	1718.04	0.87	1707.68	0.0	1718.64	0.0	1723.93	0.51	1721.49	0.38	1709.70	2.7	1708.78	0.73	1711.29	0.96	1713.85	2.4	1709.00
10/25/22	0.14	1718.04	0.87	1707.64	0.0	1718.68	0.0	1723.84	0.46	1721.84	0.39	1709.57	2.7	1708.73	0.76	1711.32	0.98	1713.80	2.5	1708.96
10/26/22	0.14	1717.92	0.87	1707.64	0.0	1718.70	0.0	1723.85	0.46	1721.80	0.40	1709.60	2.7	1708.73	0.64	1712.71	0.93	1714.15	2.5	1708.96
10/27/22 ²	0.10	1719.47	0.87	1707.76	0.0	1718.73	0.0	1723.86	0.43	1721.97	0.39	1710.15	2.7	1709.01	0.77	1710.68	0.76	1715.24	2.5	1709.13
10/28/22	0.10	1719.81	0.88	1707.64	0.0	1718.83	0.0	1723.82	0.41	1722.13	0.43	1709.57	2.7	1708.74	1.1	1705.61	0.68	1716.01	2.7	1709.05
10/29/22	0.10	1719.69	0.88	1707.64	0.0	1718.85	0.0	1723.81	0.42	1722.12	0.44	1709.56	2.7	1708.73	1.1	1705.61	0.66	1716.23	3.0	1708.75
10/30/22	0.12	1719.41	0.88	1707.64	0.0	1718.86	0.0	1723.80	0.42	1722.13	0.44	1709.55	2.7	1708.73	1.2	1705.61	0.6	1716.45	3.1	1708.70
10/31/22	0.12	1718.59	0.88	1707.64	0.0	1718.88	0.0	1723.79	0.82	1717.85	0.44	1709.57	2.7	1708.73	1.2	1705.61	0.62	1716.70	3.2	1708.70
Monthly Average	0.15	1717.23	0.87	1707.65	0.0	1718.68	0.0	1723.67	0.55	1721.22	0.36	1709.57	2.7	1708.73	0.85	1709.94	0.84	1714.70	2.6	1708.93
Analytical ¹	Conc (mg/L)	Date	Conc (mg/L)	Date	Conc (mg/L)	Date	Conc (mg/L)	Date	Conc (mg/L)	Date	Conc (mg/L)	Date	Conc (mg/L)	Date	Conc (mg/L)	Date	Conc (mg/L)	Date	Conc (mg/L)	Date
Perchlorate	360	10/5/2022	24	10/5/2022	73	10/5/2022	190	10/5/2022	180	10/5/2022	240	10/5/2022	440	10/5/2022	380	10/5/2022	560	10/5/2022	560	10/5/2022
Hexavalent Chromium	0.75	10/5/2022	0.053	10/5/2022	ND	10/5/2022	1.9	10/5/2022	1.9	10/5/2022	0.16	10/5/2022	2.8	10/5/2022	4.3	10/5/2022	6.1	10/5/2022	11	10/5/2022
Total Chromium	0.82	10/5/2022	0.10	10/5/2022	0.014	10/5/2022	1.8	10/5/2022	1.8	10/5/2022	0.15	10/5/2022	2.7	10/5/2022	4.2	10/5/2022	5.8	10/5/2022	12	10/5/2022

Notes:
 Flow reported as gpm is a daily average calculated from the totalizer reading.
 ND = Not detected above laboratory method detection limit (ClO₂ = 0.5 ug/L; ClO₃ = 10 ug/L; NO₃-N= 0.055 mg/L; Cr(VI) = 0.25 ug/L).
 1: Analytical results are reported from Eurofins TestAmerica.
 2: On 10/24 and 10/27, IWF offline due to maintenance.
 3: On 10/31, I-AD, I-F, I-I, I-J, I-K, and I-Z adjusted to meet flow targets as directed by the Trust.
 4: On 10/10, I-D, I-F, I-H, I-M, I-N, and I-Q, and I-W adjusted to meet flow targets as directed by the Trust.
 5: On 10/17, I-D, I-E, I-N, and I-W adjusted to meet flow targets as directed by the Trust.
 6: On 10/20, I-D, I-E, I-F, and I-U adjusted to meet flow targets as directed by the Trust.
 7: On 10/23, I-D, I-F, I-M, I-R, and I-X adjusted to meet flow targets as directed by the Trust.
 8: On 10/24, I-D, I-E, I-M, I-N, I-R, and I-X adjusted to meet flow targets as directed by the Trust.
 9: On 10/20, I-F offline.

Nevada Environmental Response Trust Groundwater Extraction and Treatment System Enhanced Operational Metrics																				
Date	I-G		I-H		I-I		I-J		I-K		I-L		I-M		I-N		I-O		I-P	
	Flow (gpm)	Water Elevation (ft amsl)	Flow ^{4,10} (gpm)	Water Elevation (ft amsl)	Flow ³ (gpm)	Water Elevation (ft amsl)	Flow ^{3,11} (gpm)	Water Elevation (ft amsl)	Flow ³ (gpm)	Water Elevation (ft amsl)	Flow ^{11,12,13} (gpm)	Water Elevation (ft amsl)	Flow ^{4,7,8} (gpm)	Water Elevation (ft amsl)	Flow ^{4,5,7,8} (gpm)	Water Elevation (ft amsl)	Flow (gpm)	Water Elevation (ft amsl)	Flow (gpm)	Water Elevation (ft amsl)
10/01/22	0.22	1711.24	0.64	1709.56	3.4	1720.95	5.5	1707.37	2.7	1712.95	1.1	< 1712.28	2.0	1716.92	1.6	1716.51	0.71	1720.27	1.9	1718.42
10/02/22	0.22	1711.24	0.61	1709.64	3.3	1720.94	5.5	1707.37	2.7	1712.95	1.1	< 1712.28	2.0	1716.88	1.6	1716.51	0.65	1720.25	1.9	1718.37
10/03/22	0.22	1711.24	0.58	1709.36	3.4	1720.93	5.5	1707.37	2.7	1713.05	1.1	< 1712.28	1.9	1716.84	1.8	1716.51	0.70	1720.24	1.9	1718.34
10/04/22	0.22	1711.24	0.60	1709.57	3.3	1720.95	5.5	1707.37	2.7	1713.04	1.1	< 1712.28	1.9	1716.84	1.7	1716.51	0.74	1720.23	1.9	1718.36
10/05/22	0.22	1711.23	0.61	1709.60	3.4	1720.91	5.5	1707.31	2.7	1712.96	1.1	< 1712.30	1.8	1717.01	1.7	1715.99	0.77	1720.21	1.9	1718.27
10/06/22	0.22	1711.23	0.59	1709.63	3.4	1720.90	5.5	1707.37	2.7	1712.92	1.1	< 1712.30	1.8	1717.16	1.6	1715.99	0.74	1720.19	1.9	1718.19
10/07/22	0.22	1711.23	0.59	1709.65	3.4	1720.89	5.5	1723.25	2.7	1712.77	1.1	< 1712.30	1.7	1717.31	1.8	1713.00	0.67	1720.19	1.9	1718.18
10/08/22	0.22	1711.23	0.61	1709.34	3.4	1720.89	5.6	1712.27	2.7	1712.71	1.1	< 1712.30	1.7	1717.48	1.8	1715.56	0.64	1720.25	1.9	1718.39
10/09/22	0.22	1711.23	0.56	1710.45	3.4	1720.90	5.5	1712.26	2.7	1712.69	1.1	< 1712.30	1.7	1717.60	1.8	1715.55	0.64	1720.27	1.8	1718.54
10/10/22	0.22	1711.23	0.59	1709.56	3.4	1720.91	5.5	1712.26	2.7	1712.69	1.1	< 1712.30	1.8	1717.35	1.7	1715.94	0.64	1720.29	1.8	1718.63
10/11/22	0.22	1711.23	0.60	1709.31	3.5	1720.91	5.5	1712.26	2.7	1712.58	1.1	< 1712.30	2.0	1716.68	0.63	1718.99	0.64	1720.29	1.8	1718.64
10/12/22	0.22	1711.23	0.59	1709.30	3.5	1720.89	5.5	1712.25	2.7	1712.40	1.1	< 1712.30	1.9	1716.72	0.54	1719.35	0.64	1720.27	1.8	1718.62
10/13/22	0.22	1711.23	0.64	1709.31	3.5	1720.90	5.5	1712.25	2.7	1712.51	1.1	< 1712.24	1.9	1716.82	0.50	1719.51	0.67	1720.30	1.8	1718.69
10/14/22	0.22	1711.23	0.62	1709.32	3.5	1720.90	5.5	1712.25	2.7	1712.52	1.1	< 1712.24	1.9	1716.95	0.48	1719.60	0.68	1720.27	1.8	1718.63
10/15/22	0.22	1711.23	0.64	1709.32	3.6	1720.89	5.5	1712.25	2.7	1712.47	1.1	< 1712.24	1.9	1717.06	0.46	1719.66	0.65	1720.25	1.8	1718.61
10/16/22	0.22	1711.23	0.65	1709.32	3.8	1720.88	5.5	1712.25	2.7	1712.45	1.1	< 1712.24	1.8	1717.19	0.44	1719.71	0.70	1720.24	1.8	1718.59
10/17/22	0.22	1711.23	0.64	1709.43	3.9	1720.87	5.5	1712.25	2.7	1712.40	1.1	< 1712.24	2.0	1716.88	1.7	1717.68	0.65	1720.22	1.8	1718.54
10/18/22	0.22	1711.23	0.63	1709.49	3.8	1720.86	5.5	1712.25	2.7	1712.41	1.1	< 1712.24	2.0	1716.54	2.2	1715.03	0.64	1720.20	1.8	1718.46
10/19/22	0.22	1711.23	0.63	1709.47	3.4	1720.86	5.5	1712.25	2.7	1712.40	1.1	< 1712.24	2.0	1716.54	2.0	1714.92	0.62	1720.19	1.8	1718.44
10/20/22	0.22	1711.23	0.62	1709.47	3.3	1720.86	5.5	1712.25	2.7	1712.37	1.1	< 1712.28	1.9	1716.58	1.9	1715.24	0.64	1720.19	1.8	1718.45
10/21/22	0.22	1711.23	0.61	1709.48	3.3	1720.86	5.5	1712.25	2.7	1712.31	1.1	< 1712.28	1.9	1716.60	1.8	1715.31	0.66	1720.19	1.8	1718.45
10/22/22	0.22	1711.23	0.67	1709.49	3.6	1720.88	5.5	1712.25	2.8	1712.01	1.1	< 1712.28	1.9	1716.70	1.7	1715.80	0.73	1720.21	1.8	1718.51
10/23/22	0.21	1711.22	0.68	1709.50	4.1	1720.85	5.5	1712.24	2.8	1711.68	1.1	< 1712.28	1.8	1716.78	1.5	1716.88	0.76	1720.18	1.8	1718.46
10/24/22 ²	0.21	1711.23	0.67	1709.45	4.2	1720.92	5.5	1712.36	2.8	1711.78	1.0	< 1712.28	1.9	1716.55	0.88	1718.70	0.55	1720.26	1.7	1718.49
10/25/22	0.21	1711.22	0.68	1709.45	4.5	1720.89	5.5	1712.30	2.8	1711.88	1.1	< 1712.28	1.8	1716.95	1.1	1718.72	0.28	1720.43	1.7	1718.69
10/26/22	0.22	1711.23	0.69	1709.45	4.5	1720.91	5.5	1712.29	2.8	1711.88	1.1	< 1712.28	1.7	1717.27	1.4	1718.06	0.27	1720.49	1.7	1718.80
10/27/22 ²	0.21	1711.25	0.52	1713.67	2.8	1721.34	5.4	1712.70	2.7	1712.04	1.1	< 1712.57	1.4	1718.14	1.0	1718.60	0.28	1720.49	1.6	1718.96
10/28/22	0.21	1711.22	0.19	1720.23	4.5	1721.05	5.6	1712.38	2.8	1712.12	1.1	< 1712.57	0.94	1719.33	0.46	1719.52	0.33	1720.55	1.7	1719.16
10/29/22	0.22	1711.23	0.55	1717.25	4.5	1720.98	5.5	1712.37	2.8	1712.25	1.1	< 1712.57	0.87	1719.58	0.47	1719.68	0.32	1720.56	1.7	1719.20
10/30/22	0.22	1711.23	0.68	1717.20	4.5	1720.97	5.5	1712.36	2.7	1712.32	1.1	< 1712.57	0.84	1719.71	0.47	1719.77	0.32	1720.54	1.7	1719.12
10/31/22	0.22	1711.23	0.62	1718.24	3.7	1721.15	5.6	1712.29	2.9	1710.18	1.1	< 1712.57	0.81	1719.84	0.48	1719.83	0.29	1720.56	1.7	1719.13
Monthly Average	0.22	1711.23	0.61	1710.76	3.7	1720.93	5.5	1711.69	2.7	1712.38	1.1	< 1712.32	1.7	1717.32	1.3	1717.37	0.59	1720.30	1.8	1718.59
Analytical ¹	Conc (mg/L)	Date	Conc (mg/L)	Date	Conc (mg/L)	Date	Conc (mg/L)	Date	Conc (mg/L)	Date	Conc (mg/L)	Date	Conc (mg/L)	Date	Conc (mg/L)	Date	Conc (mg/L)	Date	Conc (mg/L)	Date
Perchlorate	870	10/5/2022	670	10/5/2022	370	10/5/2022	160	10/5/2022	210	10/5/2022	250	10/5/2022	570	10/5/2022	470	10/5/2022	530	10/5/2022	570	10/5/2022
Hexavalent Chromium	19	10/5/2022	11	10/5/2022	6.5	10/5/2022	3.5	10/5/2022	2.5	10/5/2022	1.4	10/5/2022	5.4	10/5/2022	7.2	10/5/2022	9.2	10/5/2022	11	10/5/2022
Total Chromium	23	10/5/2022	12	10/5/2022	6.0	10/13/2022	3.4	10/5/2022	2.4	10/5/2022	1.3	10/5/2022	5.1	10/5/2022	6.7	10/5/2022	9.6	10/5/2022	10	10/5/2022

Notes:
 Flow reported as gpm is a daily average calculated from the totalizer reading.
 1: Analytical results are reported from Eurofins TestAmerica.
 2: On 10/24 and 10/27, IWF offline due to maintenance.
 3: On 10/31, I-AD, I-F, I-I, I-J, I-K, and I-Z adjusted to meet flow targets as directed by the Trust.
 4: On 10/10, I-D, I-F, I-H, I-N, I-M, and I-O, and I-W adjusted to meet flow targets as directed by the Trust.
 5: On 10/17, I-D, I-E, I-N, and I-W adjusted to meet flow targets as directed by the Trust.
 7: On 10/23, I-D, I-F, I-M, I-N, I-R, and I-U adjusted to meet flow targets as directed by the Trust.
 8: On 10/24, I-D, I-E, I-M, I-N, I-R, and I-X adjusted to meet flow targets as directed by the Trust.
 10: On 10/29, I-H adjusted to meet flow targets as directed by the Trust.
 11: On 10/05, I-J, I-L, I-Y, and I-Z water level taken manually due to water level dropping below transducer level.
 12: On 10/13 and 10/20, I-L, I-Y, and I-Z water level taken manually due to water level dropping below transducer level.
 13: On 10/27, I-L and I-Y water level taken manually due to water level dropping below transducer level.
 14: On 10/26, I-N and I-X adjusted to meet flow targets as directed by the Trust.

Nevada Environmental Response Trust Groundwater Extraction and Treatment System Enhanced Operational Metrics																				
Date	I-Q		I-R		I-S		I-T		I-U		I-V		I-W		I-X		I-Y		I-Z	
	Flow ⁴ (gpm)	Water Elevation (ft amsl)	Flow ^{7,8} (gpm)	Water Elevation (ft amsl)	Flow (gpm)	Water Elevation (ft amsl)	Flow (gpm)	Water Elevation (ft amsl)	Flow ^{6,7} (gpm)	Water Elevation (ft amsl)	Flow (gpm)	Water Elevation (ft amsl)	Flow ^{4,5,15} (gpm)	Water Elevation (ft amsl)	Flow ^{8,14} (gpm)	Water Elevation (ft amsl)	Flow ^{11,12,13} (gpm)	Water Elevation (ft amsl)	Flow ^{3,12} (gpm)	Water Elevation (ft amsl)
10/01/22	0.18	1715.88	0.98	1714.20	1.6	1706.51	0.69	1707.56	0.69	1709.90	4.3	1717.41	0.70	1710.01	2.9	1706.72	1.2	1700.10	6.3	1709.99
10/02/22	0.17	1715.88	0.98	1713.09	1.6	1706.13	0.69	1707.56	0.73	1709.41	4.3	1717.38	0.70	1710.02	2.9	1705.38	1.2	1700.10	6.3	1709.99
10/03/22	0.17	1715.86	1.1	1710.56	1.6	1706.50	0.69	1707.56	0.77	1707.63	4.3	1717.34	0.70	1710.02	2.9	1703.71	1.2	1700.10	6.3	1709.99
10/04/22	0.17	1715.86	1.1	1711.05	1.6	1706.49	0.69	1707.56	0.77	1707.64	4.3	1717.33	0.69	1710.02	2.9	1702.47	1.2	1700.10	6.3	1709.99
10/05/22	0.17	1715.83	1.2	1711.46	1.6	1706.50	0.69	1707.56	0.78	1707.63	4.3	1717.28	0.69	1710.01	2.9	1702.10	1.2	1700.04	6.3	1710.01
10/06/22	0.17	1715.83	1.2	1711.52	1.6	1706.50	0.68	1707.55	0.76	1707.66	4.3	1717.25	0.69	1710.01	2.8	1702.35	1.2	1700.04	6.4	1710.01
10/07/22	0.17	1715.83	1.2	1711.57	1.6	1706.49	0.68	1707.55	0.75	1707.68	4.3	1717.24	0.56	1712.53	2.9	1701.47	1.2	1700.04	6.4	1710.01
10/08/22	0.17	1715.84	1.2	1711.75	1.6	1706.49	0.68	1707.55	0.74	1707.66	4.3	1717.28	0.26	1720.09	2.9	1700.38	1.2	1700.04	6.4	1710.01
10/09/22	0.17	1715.85	1.2	1711.82	1.6	1706.50	0.68	1707.55	0.75	1707.71	4.3	1717.31	0.28	1720.03	2.9	1700.11	1.2	1700.04	6.3	1710.01
10/10/22	0.19	1715.68	1.1	1711.94	1.6	1706.49	0.68	1707.55	0.73	1707.68	4.3	1717.33	0.28	1719.53	2.8	1700.33	1.2	1700.04	6.4	1710.01
10/11/22	0.22	1715.41	1.1	1712.13	1.5	1706.48	0.68	1707.55	0.73	1707.72	4.3	1717.33	0.38	1719.03	2.8	1703.45	1.2	1700.04	6.4	1710.01
10/12/22	0.21	1715.45	1.1	1712.26	1.5	1706.48	0.68	1707.55	0.72	1707.71	4.3	1717.26	0.27	1719.90	2.9	1706.21	1.2	1700.04	6.4	1710.01
10/13/22	0.21	1715.48	1.1	1712.63	1.5	1706.48	0.68	1707.55	0.71	1707.70	4.3	1717.32	0.36	1719.70	2.9	1707.53	1.2	1700.09	6.4	1709.97
10/14/22	0.21	1715.52	1.1	1712.90	1.5	1706.48	0.68	1707.55	0.72	1707.72	4.3	1717.30	0.47	1719.31	2.9	1708.36	1.2	1700.09	6.4	1709.97
10/15/22	0.21	1715.53	1.1	1713.09	1.5	1706.48	0.68	1707.55	0.73	1707.72	4.3	1717.26	0.47	1719.29	2.9	1709.20	1.2	1700.09	6.5	1709.97
10/16/22	0.21	1715.53	1.1	1713.01	1.5	1706.48	0.68	1707.55	0.71	1707.72	4.3	1717.23	0.47	1719.25	2.9	1710.02	1.2	1700.09	6.5	1709.97
10/17/22	0.21	1715.55	1.0	1713.13	1.5	1706.48	0.68	1707.55	0.67	1708.70	4.3	1717.21	0.60	1714.65	2.8	1709.89	1.2	1700.09	6.3	1709.97
10/18/22	0.21	1715.53	1.0	1713.36	1.5	1706.48	0.68	1707.55	0.70	1709.95	4.3	1717.20	0.66	1711.08	2.8	1706.75	1.2	1700.09	6.3	1709.97
10/19/22	0.20	1715.53	0.98	1713.63	1.6	1706.48	0.69	1707.55	0.65	1711.00	4.3	1717.17	0.66	1711.10	2.8	1704.64	1.2	1700.09	6.3	1709.97
10/20/22	0.20	1715.53	0.99	1713.84	1.5	1706.48	0.69	1707.55	0.63	1711.18	4.3	1717.17	0.65	1711.49	2.8	1703.24	1.2	1700.03	6.3	1709.99
10/21/22	0.20	1715.54	0.97	1714.16	1.5	1706.49	0.69	1707.55	0.55	1711.64	4.3	1717.18	0.65	1711.65	2.8	1702.50	1.2	1700.03	6.3	1709.99
10/22/22	0.20	1715.56	0.92	1714.52	1.6	1706.48	0.69	1707.55	0.57	1711.67	4.3	1717.24	0.65	1712.20	2.8	1702.79	1.2	1700.03	6.4	1709.99
10/23/22	0.23	1715.28	1.2	1710.96	1.5	1706.48	0.69	1707.55	0.60	1710.89	4.3	1717.13	0.63	1712.45	2.8	1704.01	1.2	1700.03	6.7	1709.99
10/24/22 ²	0.23	1715.12	1.1	1711.86	1.5	1706.68	0.68	1707.57	0.72	1707.83	4.2	1717.20	0.54	1717.10	2.7	1706.26	1.2	1700.03	6.7	1709.99
10/25/22	0.17	1715.81	1.0	1713.84	1.6	1706.49	0.68	1707.57	0.74	1708.10	4.3	1717.31	0.49	1719.17	2.8	1705.86	1.2	1700.03	6.8	1709.99
10/26/22	0.17	1715.82	0.90	1714.58	1.6	1706.49	0.68	1707.57	0.74	1708.26	4.3	1717.37	0.46	1719.39	2.9	1702.26	1.2	1700.03	6.7	1709.99
10/27/22 ²	0.22	1715.37	0.66	1715.98	1.5	1707.46	0.67	1707.73	0.69	1709.31	4.2	1717.75	0.50	1719.02	2.7	1707.18	1.2	1700.08	6.7	1710.24
10/28/22	0.28	1714.63	0.39	1717.57	1.6	1706.49	0.68	1707.58	0.66	1709.83	4.3	1717.79	0.60	1718.59	2.5	1712.73	1.3	1700.08	6.9	1710.00
10/29/22	0.28	1714.75	0.39	1717.63	1.6	1706.49	0.69	1707.59	0.68	1709.80	4.3	1717.65	0.56	1719.02	2.5	1712.94	1.3	1700.08	6.8	1710.00
10/30/22	0.27	1714.79	0.39	1717.65	1.6	1706.49	0.69	1707.59	0.66	1710.31	4.3	1717.60	0.54	1719.15	2.5	1713.05	1.3	1700.08	6.8	1710.00
10/31/22	0.28	1714.78	0.32	1717.95	1.6	1706.49	0.69	1707.58	0.65	1710.99	4.3	1717.70	0.53	1719.20	2.5	1713.24	1.3	1700.08	6.1	1713.54
Monthly Average	0.21	1715.51	0.96	1713.41	1.6	1706.51	0.69	1707.56	0.70	1708.91	4.3	1717.34	0.54	1715.61	2.8	1705.71	1.2	1700.06	6.5	1710.11
Analytical ¹	Conc (mg/L)	Date	Conc (mg/L)	Date	Conc (mg/L)	Date	Conc (mg/L)	Date	Conc (mg/L)	Date	Conc (mg/L)	Date	Conc (mg/L)	Date	Conc (mg/L)	Date	Conc (mg/L)	Date	Conc (mg/L)	Date
Perchlorate	550	10/5/2022	630	10/5/2022	320	10/5/2022	740	10/5/2022	900	10/5/2022	530	10/5/2022	550	10/5/2022	590	10/5/2022	350	10/5/2022	160	10/5/2022
Hexavalent Chromium	15	10/5/2022	0.83	10/5/2022	1.6	10/5/2022	15	10/5/2022	16	10/5/2022	7.0	10/5/2022	11	10/5/2022	11	10/5/2022	1.3	10/5/2022	4.6	10/5/2022
Total Chromium	13	10/5/2022	0.80	10/5/2022	1.5	10/5/2022	15	10/5/2022	14	10/5/2022	8.6	10/5/2022	10	10/5/2022	11	10/5/2022	1.2	10/5/2022	4.6	10/5/2022

- Notes:
- 1: Analytical results are reported from Eurofins TestAmerica.
 - 2: On 10/24 and 10/27, IWF offline due to maintenance.
 - 3: On 10/31, I-AD, I-F, I-H, I-J, I-K, and I-Z adjusted to meet flow targets as directed by the Trust.
 - 4: On 10/10, I-D, I-F, I-H, I-N, I-M, and I-Q, and, I-W adjusted to meet flow targets as directed by the Trust.
 - 5: On 10/17, I-D, I-E, I-N, and I-W adjusted to meet flow targets as directed by the Trust.
 - 6: On 10/20, I-D, I-E, I-F, and I-U adjusted to meet flow targets as directed by the Trust.
 - 7: On 10/23, I-D, I-F, I-M, I-N, I-R, and I-U adjusted to meet flow targets as directed by the Trust.
 - 8: On 10/24, I-D, I-E, I-M, I-N, I-R, and I-X adjusted to meet flow targets as directed by the Trust.
 - 11: On 10/05, I-J, I-L, I-Y, and I-Z water level taken manually due to water level dropping below transducer level.
 - 12: On 10/13 and 10/20, I-L, I-Y, and I-Z water level taken manually due to water level dropping below transducer level.
 - 13: On 10/27, I-L and I-Y water level taken manually due to water level dropping below transducer level.
 - 14: On 10/26, I-N and I-X adjusted to meet flow targets as directed by the Trust.
 - 15: On 10/10 and 10/12, I-W offline due to maintenance.
 - 16: Duplicates taken on 10/05 for well I-X; average of both values is presented and used for calculations.

Table 4 - Treatment Plant Operational Metrics

Nevada Environmental Response Trust Groundwater Extraction and Treatment System Enhanced Operational Metrics																
Date	LS #2	GWTP Effluent ¹				GW-11 Influent ¹				FBR Plant Influent ¹						
	Flow (gpm)	Flow (gpm)	TA - Cr (TR) (mg/L)	TA - Cr (VI) (mg/L)	TA - ClO ₄ (mg/L)	Flow (gpm)	TA - Cr (TR) (mg/L)	TA - Cr (VI) (mg/L)	TA - ClO ₄ (mg/L)	Flow (gpm)	TA - ClO ₄ (mg/L)	ETI - ClO ₄ (mg/L)	TA - ClO ₄ (mg/L)	TA - NO ₂ - N (mg/L)	TA - Cr (TR) (mg/L)	TA - Cr (VI) (mg/L)
10/01/22	847	62				0.0				909		56				
10/02/22	847	62				0.0				909	54	55				
10/03/22	846	62				0.0				908		57				
10/04/22	847	62				0.0				913		58				
10/05/22	847	60	0.40	ND	390	0.0				907		50	110	11	0.12	0.0052
10/06/22	848	60				0.0				909		54				
10/07/22	848	61				0.0				913		50				
10/08/22	848	62				0.0				911	55	56				
10/09/22	856	62				0.0				918		55				
10/10/22	844	60				0.0				905		57				
10/11/22	844	59				0.0				903		58				
10/12/22	816	61	0.22	ND	440	4.0	0.37	0.031	41	910		60		9.8	0.57	0.014
10/13/22	845	62				0.0				907		60				
10/14/22 ³	844	62				0.0				907		58				
10/15/22	845	61				0.0				906	53	56				
10/16/22	845	61				0.0				906		57				
10/17/22	846	61				0.0				907		52				
10/18/22	845	62				0.0				906		55				
10/19/22	845	61	0.070	ND	370	0.0				908		55		9.7	0.16	0.0033
10/20/22	671	62				0.0				937		35				
10/21/22	842	62				0.0				904		51				
10/22/22	839	62				0.0				902	52	51				
10/23/22	840	62				0.0				903		52				
10/24/22	839	60				0.1				900		52				
10/25/22	837	62				0.0				903		51				
10/26/22	840	62	0.43	ND	410	0.0				902		52		10	0.075	0.0071
10/27/22	840	56				0.0				896		57				
10/28/22	840	62				0.1				902		56				
10/29/22	839	61				0.1				948	56	56				
10/30/22	841	63				0.0				903		55				
10/31/22	839	63				0.0				910		56				
Monthly Average ²	837	61	0.29	ND	404	0.1	0.37	0.031	41	909	54	54	110	10	0.22	0.025

Notes:
 Flow reported as gpm is a daily average calculated from the totalizer reading. The only exceptions are the instantaneous flow readings recorded for the 1st and 2nd Stage FBR flows.
 ND = Not detected above laboratory method detection limit (ClO₄ = 0.5 ug/L; ClO₃ = 10 ug/L; NO₃-N = 0.055 mg/L; Cr(VI) = 0.25 ug/L).
 1: ETI = Envirogen internal process control data, TA = Eurofins TestAmerica data.
 2: All average concentrations reported are monthly flow weighted averages.
 3: On 10/14, FBR Treatment Plant offline briefly due to maintenance.

Table 4 - Treatment Plant Operational Metrics

Nevada Environmental Response Trust Groundwater Extraction and Treatment System Enhanced Operational Metrics														
Date	1st Stage FBR ⁴			2nd Stage FBR ⁴			FBR Plant Effluent ¹							
	Flow (gpm)	pH (s.u.)	ORP (mV)	Flow (gpm)	pH (s.u.)	ORP (mV)	Flow ⁵ (gpm)	TA - ClO ₂ (mg/L)	ETI - ClO ₄ (mg/L)	TA - ClO ₃ (mg/L)	TA - Cr (TR) (mg/L)	TA - Cr (VI) (mg/L)	TA - NO ₃ - N (mg/L)	ETI - Turbidity (NTU)
10/01/22	969	6.7	-373	724	6.7	-420	943	0.00036 J	0.0					17
10/02/22	975	6.7	-360	762	6.7	-418	922		0.0					12
10/03/22	978	6.7	-354	740	6.7	-421	939		0.0					35
10/04/22	967	6.3	-266	685	6.6	-409	951		0.0					26
10/05/22	968	6.4	-269	699	6.6	-408	943		0.0	0.022 J, D	0.018	ND	0.064	33
10/06/22	945	6.4	-360	924	6.7	-417	948		0.0					27
10/07/22	950	6.5	-269	824	6.7	-416	950		0.0					21
10/08/22	989	6.4	-372	764	6.7	-418	945	ND	0.0					20
10/09/22	852	6.4	-387	843	5.2	-420	891		0.0					30
10/10/22	980	6.4	-399	889	6.7	-419	945		0.0					30
10/11/22	1002	6.4	-400	806	6.7	-418	950		0.0					33
10/12/22	966	6.4	-307	503	6.7	-418	939		0.0		0.021	ND	0.039 J	40
10/13/22	979	6.4	-324	739	6.7	-410	942		0.0					15
10/14/22 ³	936	6.4	-366	668	6.7	-412	905		0.0					36
10/15/22	970	6.5	-359	781	6.7	-415	924	ND	0.0					33
10/16/22	954	6.6	-314	562	6.7	-403	921		0.0					28
10/17/22	955	6.6	-249	742	6.7	-406	923		0.0					42
10/18/22	971	6.6	-288	798	6.7	-417	921		0.0					12
10/19/22	973	6.6	-402	605	6.7	-413	928		0.0		0.0099 J	ND	0.017 J	31
10/20/22	954	6.6	-387	790	6.7	-413	950		0.0					18
10/21/22	967	6.6	-347	758	6.7	-411	951		0.0					18
10/22/22	956	6.7	-398	879	6.7	-414	945	ND	0.0					22
10/23/22	958	6.6	-364	869	6.7	-412	946		0.0					17
10/24/22	974	6.4	-315	725	6.6	-410	943		0.0					17
10/25/22	977	6.5	-322	811	6.6	-409	947		0.0					34
10/26/22	964	6.4	-276	849	6.7	-407	947		0.0		ND	ND	ND	26
10/27/22	961	6.5	-308	827	6.7	-408	940		0.0					54
10/28/22	977	6.5	-377	845	6.7	-407	935		0.0					43
10/29/22	981	6.5	-402	905	6.7	-407	940	0.0072	0.0					64
10/30/22	965	6.5	-412	853	6.7	-403	936		0.0					35
10/31/22	953	6.5	-406	843	6.7	-400	948		0.0					30
Monthly Average ²	963	6.5	-346	775	6.6	-412	937	0.0014	ND	0.022	0.012	ND	0.029	29

Notes:

Flow reported as gpm is a daily average calculated from the totalizer reading. The only exceptions are the instantaneous flow readings recorded for the 1st and 2nd Stage FBR flows.

ND = Not detected above laboratory method detection limit (ClO₂ = 0.5 ug/L; ClO₃ = 10 ug/L; NO₃-N = 0.055 mg/L; Cr(VI) = 0.25 ug/L).

J = Result is less than the reporting limit but greater than or equal to the method detection limit and the concentration is an approximate value.

D = Result was obtained from the analysis of a dilution.

1: ETI = Envirogen internal process control data, TA = Eurofins TestAmerica data.

2: All average concentrations reported are monthly flow weighted averages.

3: On 10/14, FBR Treatment Plant offline briefly due to maintenance.

4: For 1st and 2nd stage FBRs, flow measurements are collected from the influent lines and pH and ORP samples are collected from the recycle lines.

5: FBR Plant Effluent represents effluent discharged to Las Vegas Wash. While this may represent the entirety of the FBR Plant effluent, any diversions to GW-11 are subtracted from the original effluent flow.

GW-11 Level Monitoring ¹		
Date	Field Measurement (ft)	Volume (MG)
10/15/22	28.0	39.3
10/31/22	28.9	38.1

GW-11 Leak Detection Monitoring				
Date	Amount Pumped ² (gallons)			
	NW Corner	NE Corner	SW Corner	SE Corner
10/13/22	0.0	0.0	336	0.0
10/25/22	0.0	0.0	282	0.0

GW-11 Composite Sample ³		
Analytes	Concentration	Units
Perchlorate	0.63	mg/L
Chlorate	0.18	mg/L
Ammonia as N	ND	mg/L
Total Phosphorus	3.5	mg/L
Total Dissolved Solids (TDS)	17000 D	mg/L
Total Suspended Solids (TSS)	63	mg/L
pH	8.2 HF	s.u.
Calcium	850	mg/L
Iron	0.24	mg/L
Chromium (total)	0.0011	mg/L
Chromium VI	ND	mg/L
Chloride	6,600	mg/L
Nitrate as N	ND	mg/L
Sulfate	5,500	mg/L

Notes:

D = Result was obtained from the analysis of a dilution.

HF = Field parameter with a holding time of 15 minutes. Test performed by laboratory at client's request.

ND = Not detected above laboratory method detection limit (NH₃-N= 0.1 mg/L; NO₃-N= 0.055 mg/L).

1: A transducer installed along the eastern berm provides water pressure measurements that are correlated to elevations for calculation of water depths.

2: Pumping occurs over three consecutive days. The total amount pumped over the three day period is listed with the last day pumping occurred.

3: GW-11 Corner Composite Sample is collected quarterly, most recent sampling results are presented. Sampled on: August 26, 2022.

Nevada Environmental Response Trust Groundwater Extraction and Treatment System Enhanced Operational Metrics						
Date	Flow ¹ (gpm)	FBR Influent Concentration			Influent Function Load ² (lbs/day)	6 Month Rolling Average (lbs/day)
		ClO ₄ (mg/L)	NO ₃ as N (mg/L)	ClO ₃ (mg/L)		
Nov 2021	879	49	10	120	406	473
Dec 2021	934	42	10	110	391	471
Jan 2022	992	58	11	120	481	457
Feb 2022	1,050	56	18	110	563	466
Mar 2022	1,022	50	20	110	556	477
Apr 2022	957	59	17	110	509	485
May 2022	944	56	14	110	471	495
June 2022	921	52	12	110	430	502
July 2022	912	50	12	100	402	488
Aug 2022	911	50	11	120	429	466
Sep 2022	852	54	11	110	392	439
Oct 2022	909	54	10	110	410	422

Notes:

Concentrations and flow are presented as monthly average.

1: Flow used in loading calculation is average monthly FBR influent flow.

2: FBR loading calculated as $[(0.9 \cdot \text{NO}_3 \text{ as N} + 0.17 \cdot \text{ClO}_3 + 0.18 \cdot \text{ClO}_4) \cdot \text{Flow} \cdot 1440 / 1000000 \cdot 8.34]$.

Nevada Environmental Response Trust Groundwater Extraction and Treatment System Enhanced Operational Metrics																
Date	E1-1		E1-2		E1-3		E2-1		E2-2		E2-3		E2-4		E2-5	
	Flow (gpm)	Water Elevation (ft amsl)	Flow ² (gpm)	Water Elevation (ft amsl)	Flow (gpm)	Water Elevation (ft amsl)	Flow (gpm)	Water Elevation (ft amsl)	Flow (gpm)	Water Elevation (ft amsl)	Flow ³ (gpm)	Water Elevation (ft amsl)	Flow (gpm)	Water Elevation (ft amsl)	Flow ⁴ (gpm)	Water Elevation (ft amsl)
10/01/22	3.2	1711.52	0.82	1710.75	0.93	1713.36	1.2	1715.94	0.90	1715.99	1.0	1716.12	1.0	1717.25	0.26	1714.57
10/02/22	3.1	1711.59	0.78	1711.28	0.89	1712.58	1.2	1716.11	0.97	1716.48	1.0	1716.79	1.0	1716.87	0.24	1714.41
10/03/22	3.2	1711.67	0.75	1711.25	0.88	1712.41	1.2	1715.97	0.94	1715.66	1.0	1717.03	1.1	1716.60	0.17	1714.23
10/04/22	3.1	1711.58	0.84	1711.31	0.92	1712.45	1.2	1715.56	0.86	1714.71	0.97	1717.51	1.0	1716.38	0.00	1722.10
10/05/22	3.1	1711.62	0.82	1711.18	0.91	1712.54	1.1	1715.37	0.97	1714.89	0.97	1717.58	1.0	1716.64	0.14	1719.07
10/06/22	3.1	1711.70	0.78	1711.11	0.92	1712.52	1.1	1715.15	0.96	1715.02	0.91	1717.66	1.1	1716.55	0.32	1713.41
10/07/22	3.1	1711.52	0.79	1711.01	0.87	1712.33	1.1	1715.30	0.95	1715.02	0.92	1717.66	1.3	1716.40	0.31	1713.32
10/08/22	3.1	1711.97	0.78	1712.64	0.89	1712.90	1.1	1715.93	0.96	1716.50	0.90	1719.15	0.57	1717.54	0.33	1715.69
10/09/22	3.1	1711.93	0.58	1712.66	0.91	1713.02	1.1	1716.12	0.95	1716.50	1.0	1718.55	1.0	1716.91	0.30	1715.72
10/10/22	3.1	1711.43	0.72	1711.86	0.91	1711.64	1.1	1715.87	1.0	1716.48	0.93	1718.25	1.0	1716.69	0.19	1714.17
10/11/22	3.1	1711.31	0.80	1712.51	0.91	1711.41	1.1	1715.95	0.97	1716.41	0.96	1717.14	0.95	1716.81	0.25	1713.31
10/12/22	3.2	1711.35	0.82	1712.64	0.88	1711.51	0.99	1715.92	0.91	1716.35	0.91	1716.83	1.0	1716.95	0.31	1712.22
10/13/22	3.2	1711.33	0.81	1713.40	0.81	1712.54	0.98	1715.37	0.87	1716.42	0.89	1717.00	0.93	1716.83	0.25	1713.41
10/14/22	3.1	1711.14	0.78	1712.79	0.99	1711.02	1.1	1716.70	1.0	1716.43	0.94	1717.73	1.1	1716.54	0.16	1714.50
10/15/22	3.1	1711.45	0.78	1712.60	0.88	1710.80	1.0	1716.27	0.93	1716.73	0.90	1717.85	0.98	1716.29	0.18	1715.15
10/16/22	3.2	1711.47	0.80	1712.65	0.90	1712.46	0.97	1716.74	0.96	1717.28	0.89	1718.60	1.0	1716.07	0.17	1717.21
10/17/22	3.1	1711.58	0.79	1712.51	0.89	1711.86	0.98	1716.93	1.1	1716.85	0.92	1717.84	1.0	1716.56	0.19	1716.77
10/18/22	3.2	1711.47	0.80	1712.44	0.94	1711.16	0.91	1717.09	0.98	1716.60	0.92	1718.29	0.91	1717.94	0.24	1715.95
10/19/22	3.2	1711.68	0.79	1712.10	0.91	1711.12	0.95	1717.20	0.99	1716.67	0.84	1718.43	0.95	1717.61	0.27	1715.76
10/20/22	3.2	1711.92	0.74	1711.59	0.91	1710.77	0.92	1717.76	0.99	1716.94	0.48	1719.00	0.99	1717.63	0.21	1715.62
10/21/22	3.2	1712.34	0.73	1711.54	0.91	1710.98	0.89	1718.42	0.95	1716.90	0.63	1719.44	0.95	1717.72	0.12	1715.99
10/22/22	2.9	1712.59	0.74	1711.65	0.90	1710.92	1.1	1716.64	0.94	1717.04	0.72	1717.89	0.95	1717.20	0.19	1716.25
10/23/22	3.1	1713.43	0.71	1712.32	0.91	1711.58	0.86	1716.28	0.95	1717.15	0.74	1718.44	1.1	1717.47	0.20	1716.86
10/24/22	3.1	1713.16	0.60	1712.10	0.95	1711.04	0.73	1716.42	1.0	1717.11	0.84	1718.05	0.95	1717.38	0.31	1716.00
10/25/22	3.1	1713.08	0.63	1711.95	0.81	1711.12	0.86	1716.95	0.89	1717.48	0.87	1718.02	0.76	1717.51	0.35	1715.81
10/26/22	3.1	1713.31	0.71	1712.26	0.89	1711.49	0.40	1716.91	0.90	1717.39	0.92	1717.87	0.91	1717.49	0.34	1716.17
10/27/22	3.0	1713.23	0.86	1712.46	0.90	1710.16	1.4	1717.12	0.91	1717.44	0.89	1717.80	0.97	1717.39	0.30	1715.65
10/28/22	3.2	1713.29	0.72	1712.49	0.86	1709.53	0.86	1717.03	0.90	1716.97	0.90	1717.87	0.88	1717.50	0.35	1714.66
10/29/22	3.2	1712.32	0.76	1712.29	0.89	1708.74	0.83	1716.15	0.90	1716.84	0.90	1717.27	0.93	1716.94	0.35	1713.77
10/30/22	3.1	1713.08	0.76	1712.61	0.87	1708.52	0.80	1716.57	0.88	1716.47	0.87	1716.90	0.90	1717.71	0.33	1715.95
10/31/22	3.2	1713.14	0.80	1712.81	0.90	1709.50	0.84	1717.17	0.93	1716.55	0.90	1716.98	0.93	1717.43	0.33	1716.54
Monthly Average	3.1	1712.07	0.76	1712.09	0.90	1711.42	0.99	1716.41	0.94	1716.50	0.89	1717.79	0.97	1717.06	0.25	1715.49
Analytical ¹	Conc (mg/L)	Date	Conc (mg/L)	Date	Conc (mg/L)	Date	Conc (mg/L)	Date	Conc (mg/L)	Date	Conc (mg/L)	Date	Conc (mg/L)	Date	Conc (mg/L)	Date
Perchlorate	490	10/5/2022	820	10/5/2022	410	10/5/2022	83	10/5/2022	390	10/5/2022	810	10/5/2022	890	10/5/2022	915	10/5/2022
Hexavalent Chromium	0.091	10/5/2022	0.58	10/5/2022	0.64	10/5/2022	0.028	10/5/2022	0.029	10/5/2022	0.090	10/5/2022	0.088	10/5/2022	0.21	10/5/2022
Total Chromium	0.089	10/5/2022	0.55	10/5/2022	0.69	10/5/2022	0.030	10/5/2022	0.028	10/5/2022	0.088	10/5/2022	0.093	10/5/2022	0.21	10/5/2022

Notes:
 Flow reported as gpm is a daily average calculated from the totalizer reading.
 The flow rate at individual wells is adjusted daily to maintain the water level in the wells above the pump.
 1: Analytical results are reported from Eurofins TestAmerica.
 2: On 10/28, E1-2 offline; Averaged flows are presented for this time.
 3: From 10/17 to 10/18, E2-3 offline; Averaged flows are presented for this time.
 4: On 10/04 and 10/23, E2-5 offline.
 5: Duplicates taken on 10/05 for well E2-5; average of both values is presented and used for calculations.

Figure 1 - GW-11 Pond Volume and FBR Influent Perchlorate Concentration

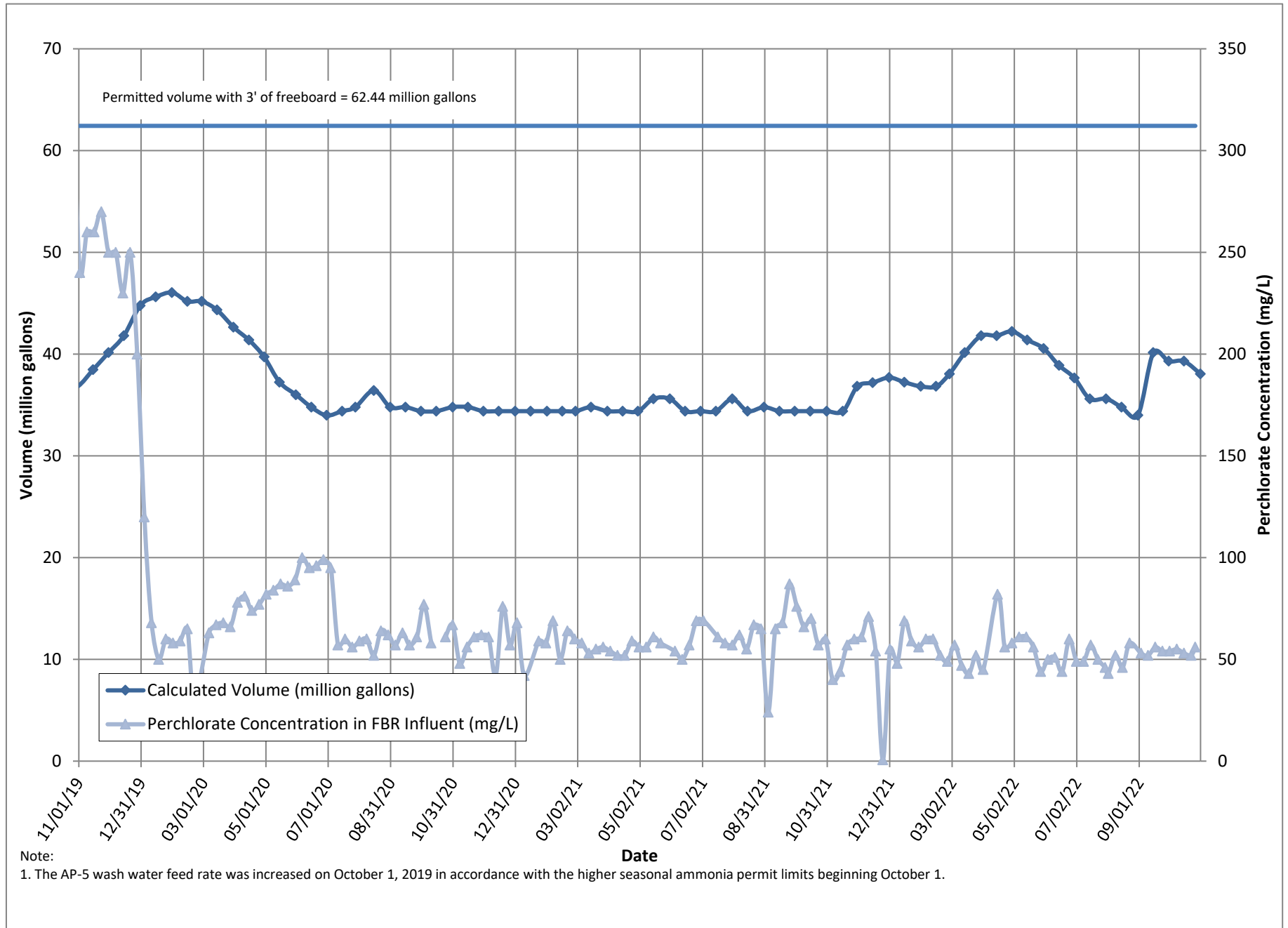


Figure 2 - FBR Equivalent Loading Calculation

