

Table 1 - Seep Well Field (SWF) Operational Metrics

Nevada Environmental Response Trust   Groundwater Extraction and Treatment System   Enhanced Operational Metrics																				
Date	LS #1 Flow (gpm)	PC-116R (East Well)		PC-99R2/R3 (Center Well)		PC-115R (West Well)		PC-117		PC-118		PC-119		PC-120		PC-121		PC-133		
		Flow (gpm)	Water Elevation (ft amsl)	Flow (gpm)	Water Elevation (ft amsl)	Flow (gpm)	Water Elevation (ft amsl)	Flow (gpm)	Water Elevation (ft amsl)	Flow (gpm)	Water Elevation (ft amsl)	Flow (gpm)	Water Elevation (ft amsl)	Flow (gpm)	Water Elevation (ft amsl)	Flow (gpm)	Water Elevation (ft amsl)	Flow (gpm)	Water Elevation (ft amsl) <sup>4</sup>	
07/01/22	464	159	1536.25	81	1541.19	130	1542.50	107	1533.24	67	1547.88	109	1548.38	51	1549.44	20	1550.63	5.9	< 1520.00	
07/02/22	464	159	1536.23	81	1541.22	130	1542.48	107	1533.22	67	1547.87	109	1548.37	51	1549.42	20	1550.61	5.8	< 1520.00	
07/03/22	464	159	1536.19	81	1541.26	130	1542.46	106	1533.20	67	1547.86	109	1548.35	51	1549.40	20	1550.59	5.8	< 1520.00	
07/04/22	464	159	1536.17	81	1541.29	130	1542.45	106	1533.18	67	1547.86	109	1548.33	51	1549.39	20	1550.58	5.7	< 1520.00	
07/05/22	464	159	1536.15	81	1541.32	130	1542.44	107	1533.17	67	1547.85	109	1548.32	51	1549.38	20	1550.57	5.8	< 1520.00	
07/06/22	464	159	1536.13	81	1541.35	130	1542.43	107	1533.15	67	1547.85	109	1548.31	51	1549.37	20	1550.55	5.6	< 1520.00	
07/07/22	463	159	1536.10	80	1541.38	130	1542.41	107	1533.14	67	1547.84	109	1548.30	51	1549.35	20	1550.54	5.6	< 1520.00	
07/08/22	470	159	1536.08	80	1541.41	130	1542.40	107	1533.12	67	1547.84	109	1548.29	51	1549.34	20	1550.53	5.6	< 1520.00	
07/09/22	470	159	1536.06	80	1541.44	130	1542.39	107	1533.11	67	1547.83	109	1548.27	51	1549.33	20	1550.52	5.6	< 1520.00	
07/10/22	468	159	1536.03	80	1541.44	130	1542.38	107	1533.09	67	1547.83	109	1548.26	51	1549.31	20	1550.50	5.6	< 1520.00	
07/11/22	477	159	1536.01	80	1541.45	130	1542.37	107	1533.08	66	1547.82	109	1548.25	51	1549.30	20	1550.49	5.5	< 1520.00	
07/12/22	478	159	1535.98	80	1541.51	130	1542.35	107	1533.06	66	1547.82	109	1548.24	51	1549.29	20	1550.47	5.5	< 1520.00	
07/13/22	478	159	1535.95	80	1541.46	130	1542.33	107	1533.03	66	1547.80	109	1548.22	51	1549.27	20	1550.46	5.6	< 1520.00	
07/14/22	478	159	1535.93	80	1541.48	130	1542.32	107	1533.02	66	1547.80	109	1548.20	51	1549.25	20	1550.44	5.6	< 1520.00	
07/15/22	477	159	1535.91	80	1541.51	130	1542.31	107	1533.01	66	1547.79	109	1548.20	51	1549.25	20	1550.43	5.6	< 1520.00	
07/16/22	475	159	1535.89	80	1541.55	130	1542.30	107	1532.99	66	1547.79	109	1548.19	51	1549.24	20	1550.43	5.5	< 1520.00	
07/17/22	472	159	1535.87	79	1541.57	130	1542.29	107	1532.98	66	1547.79	109	1548.18	51	1549.23	20	1550.42	5.6	< 1520.00	
07/18/22	474	159	1535.85	79	1541.61	130	1542.28	107	1532.97	66	1547.78	109	1548.17	51	1549.22	20	1550.41	5.5	< 1520.00	
07/19/22	473	159	1535.84	79	1541.64	130	1542.28	107	1532.96	66	1547.78	109	1548.17	51	1549.22	20	1550.41	5.6	< 1520.00	
07/20/22	474	159	1535.82	79	1541.66	130	1542.27	107	1532.95	66	1547.77	109	1548.16	51	1549.21	20	1550.40	5.6	< 1520.00	
07/21/22	510	159	1535.80	79	1541.67	130	1542.26	107	1532.93	66	1547.77	109	1548.15	51	1549.20	20	1550.39	5.5	< 1520.00	
07/22/22	481	159	1535.78	79	1541.68	130	1542.25	107	1532.92	66	1547.77	109	1548.14	51	1549.19	20	1550.38	5.5	< 1520.00	
07/23/22	481	159	1535.76	79	1541.70	130	1542.24	107	1532.91	66	1547.76	109	1548.13	51	1549.18	20	1550.37	5.6	< 1520.00	
07/24/22	483	159	1535.75	79	1541.74	130	1542.23	107	1532.90	66	1547.75	109	1548.13	51	1549.18	20	1550.37	5.5	< 1520.00	
07/25/22	481	158	1535.74	79	1541.78	129	1542.23	107	1532.90	66	1547.75	109	1548.12	51	1549.17	20	1550.36	5.4	< 1520.00	
07/26/22	482	158	1535.76	79	1541.80	129	1542.24	107	1532.92	66	1547.76	109	1548.13	51	1549.18	20	1550.37	5.5	< 1520.00	
7/27/22 <sup>2</sup>	402	139	1535.75	69	1541.86	113	1542.23	93	1532.91	52	1547.75	95	1548.13	45	1549.18	18	1550.37	4.8	< 1520.00	
7/28/22 <sup>2</sup>	173	46	1536.29	23	1542.28	38	1542.67	31	1533.42	19	1548.08	31	1548.51	15	1549.52	5.9	1550.67	1.6	1520.07	
7/29/22 <sup>2</sup>	490	155	1537.85	80	1543.12	128	1543.73	103	1534.87	57	1549.10	105	1549.47	49	1550.40	20	1551.45	5.4	1520.00	
07/30/22	482	160	1537.25	82	1542.93	130	1543.37	107	1534.21	66	1548.60	109	1549.18	51	1550.18	21	1551.31	6.1	< 1520.00	
07/31/22	484	159	1537.11	81	1542.90	130	1543.25	107	1534.04	66	1548.52	109	1549.08	51	1550.11	20	1551.25	5.9	< 1520.00	
Monthly Average	463	154	1536.11	78	1541.68	126	1542.46	104	1533.18	64	1547.91	106	1548.33	50	1549.38	20	1550.56	5.5	1520.00	
Analytical	Conc <sup>1</sup> (mg/L)	Date	Conc (mg/L)	Date	Conc (mg/L)	Date	Conc (mg/L)	Date	Conc (mg/L)	Date	Conc (mg/L)	Date	Conc (mg/L)	Date	Conc (mg/L)	Date	Conc (mg/L)	Date	Conc (mg/L)	Date
Perchlorate	10	7/12/2022	11	7/12/2022	8.2	7/12/2022	4.3	7/12/2022	3.9	7/12/2022	1.8	7/12/2022	0.51	7/12/2022	0.62	7/12/2022	2.7	7/12/2022		
Hexavalent Chromium	0.0059	7/12/2022	0.00075 J	7/12/2022	ND	7/12/2022	0.0043	7/12/2022	ND	7/12/2022	ND	7/12/2022	ND	7/12/2022	ND	7/12/2022	ND	7/12/2022	ND	7/12/2022
Total Chromium	0.0039 J	7/12/2022	ND	7/12/2022	ND	7/12/2022	0.0028 J	7/12/2022	ND	7/12/2022	ND	7/12/2022	ND	7/12/2022	ND	7/12/2022	ND	7/12/2022	ND	7/12/2022

**Notes:**  
 Flow reported as gpm is a daily average calculated from the totalizer reading.  
 ND = Not detected above laboratory method detection limit (Cr(TR)=2.5 ug/L, Cr(VI) =0.20 ug/L).  
 J = Result is less than the reporting limit but greater than or equal to the method detection limit and the concentration is an approximate value.  
 1: Analytical results are reported from Eurofins TestAmerica.  
 2: From 07/27 to 07/29, SWF offline due to electrical storm; average flows are presented for this period.  
 3: Duplicates taken on 07/12 for well PC-116R; average of both values is presented and used for calculations.  
 4: A "<" preceding the water elevation indicates the reported water level is below the transducer. Average monthly water elevation calculations include the transducer elevation in instances where the water level is below the transducer.

Nevada Environmental Response Trust   Groundwater Extraction and Treatment System   Enhanced Operational Metrics																	
Date	LS #3 Flow (gpm)	ART-1/1A		ART-2/2A		ART-3/3A		ART-4/4A		ART-9		ART-7A/7B		ART-8/8A		PC-150	
		Flow <sup>3</sup> (gpm)	Water Elevation (ft amsl)	Flow <sup>4</sup> (gpm)	Water Elevation (ft amsl)	Flow (gpm)	Water Elevation (ft amsl)	Flow <sup>5</sup> (gpm)	Water Elevation (ft amsl)	Flow (gpm)	Water Elevation (ft amsl)	Flow <sup>6</sup> (gpm)	Water Elevation (ft amsl)	Flow <sup>7</sup> (gpm)	Water Elevation (ft amsl)	Flow <sup>9</sup> (gpm)	Water Elevation (ft amsl)
07/01/22	399	42	1584.08	141	1584.05	22	1582.97	3.7	1578.84	40	1576.58	27	1579.54	171	1581.48	1.5	1578.70
07/02/22	399	42	1584.06	141	1584.03	22	1582.96	3.7	1578.84	40	1576.57	27	1579.47	171	1581.48	1.5	1578.70
07/03/22	398	42	1584.04	141	1584.01	22	1582.94	3.7	1578.84	40	1576.54	27	1579.45	172	1581.46	1.5	1578.70
07/04/22	398	42	1584.03	141	1583.99	22	1582.92	3.7	1578.84	39	1576.50	26	1579.50	172	1581.44	1.5	1578.70
07/05/22	398	42	1584.01	141	1583.97	22	1582.91	3.7	1578.84	39	1576.50	26	1579.51	171	1581.43	1.5	1578.70
07/06/22	397	42	1584.00	141	1583.95	22	1582.90	3.7	1578.84	39	1576.50	26	1579.54	171	1581.41	1.5	1578.70
07/07/22	397	42	1583.98	141	1583.93	22	1582.88	3.7	1578.84	39	1576.50	26	1579.58	171	1581.40	1.5	1578.70
07/08/22	397	42	1583.96	141	1583.91	22	1582.87	3.6	1578.84	39	1576.50	26	1579.62	171	1581.38	1.5	1578.70
07/09/22	396	42	1583.95	141	1583.89	22	1582.86	3.6	1578.84	39	1576.52	26	1579.64	171	1581.37	1.5	1578.70
07/10/22	396	42	1583.94	141	1583.88	22	1582.85	3.6	1578.84	39	1576.57	26	1579.59	171	1581.36	1.5	1578.70
07/11/22	396	42	1583.93	141	1583.87	22	1582.84	3.6	1578.84	39	1576.55	26	1579.48	171	1581.35	1.5	1578.70
07/12/22	395	42	1583.92	141	1583.85	22	1582.83	3.6	1578.84	39	1576.52	26	1579.44	171	1581.34	1.5	1578.70
07/13/22	395	42	1583.91	141	1583.84	22	1582.82	3.6	1578.84	38	1576.50	26	1579.49	171	1581.33	1.5	1578.70
07/14/22	386	41	1583.95	133	1583.95	19	1580.51	3.6	1578.84	38	1576.50	26	1579.56	172	1581.39	1.5	1578.70
07/15/22	382	25	1577.74	141	1584.07	18	1579.64	3.7	1578.84	38	1576.52	26	1579.60	172	1581.52	1.5	1578.70
07/16/22	385	25	1577.54	141	1584.06	22	1582.91	3.7	1578.84	38	1576.52	26	1579.51	172	1581.48	1.5	1578.70
07/17/22	385	25	1577.55	141	1584.06	22	1582.91	3.6	1578.84	38	1576.52	26	1579.46	172	1581.49	1.5	1578.70
07/18/22	385	24	1577.56	141	1584.07	22	1582.91	3.7	1578.84	38	1576.52	26	1579.55	172	1581.49	1.5	1578.70
07/19/22	385	24	1577.56	141	1584.08	22	1582.92	3.7	1578.84	38	1576.52	26	1579.54	172	1581.50	1.5	1578.70
07/20/22	385	24	1577.57	141	1584.09	22	1582.93	3.6	1579.04	38	1576.51	26	1579.55	172	1581.51	1.5	1578.70
07/21/22	385	24	1577.57	141	1584.10	22	1582.94	3.7	1578.84	38	1576.50	26	1579.46	172	1581.52	1.5	1578.70
07/22/22	391	35	1581.37	141	1584.04	22	1582.91	3.7	1578.84	38	1576.51	26	1579.40	172	1581.48	1.5	1578.70
07/23/22	395	42	1583.97	141	1583.91	22	1582.83	3.6	1578.84	38	1576.50	26	1579.45	172	1581.39	1.5	1578.70
07/24/22	395	42	1583.94	141	1583.87	22	1582.80	3.6	1578.83	38	1576.51	26	1579.48	172	1581.35	1.5	1578.70
07/25/22	394	42	1583.92	141	1583.84	22	1582.78	3.6	1578.83	38	1576.53	26	1579.58	172	1581.33	1.5	1578.70
07/26/22	394	42	1583.91	141	1583.82	22	1582.77	3.6	1578.83	38	1576.56	26	1579.57	172	1581.32	1.5	1578.70
7/27/22 <sup>2</sup>	388	41	1583.42	136	1583.90	21	1582.20	3.6	1579.45	38	1576.54	26	1579.58	170	1581.31	1.5	1579.88
07/28/22	394	42	1583.86	141	1583.86	21	1582.78	3.6	1581.07	38	1576.51	26	1579.55	172	1581.34	1.5	1586.53
07/29/22	394	42	1583.90	141	1583.81	21	1582.74	3.6	1578.83	37	1576.58	26	1579.59	172	1581.30	1.5	1581.61
07/30/22	394	42	1583.92	141	1583.82	21	1582.74	3.6	1578.83	37	1576.59	26	1579.63	172	1581.31	1.5	1578.70
07/31/22	396	42	1583.94	141	1583.84	21	1582.75	3.6	1578.83	37	1576.64	26	1579.68	172	1581.32	1.5	1578.70
Monthly Average	393	38	1582.42	141	1583.95	22	1582.66	3.6	1578.94	38	1576.53	26	1579.53	172	1581.41	1.5	1579.08
Analytical	Conc (mg/L)	Date	Conc (mg/L)	Date	Conc (mg/L)	Date	Conc (mg/L)	Date	Conc (mg/L)	Date	Conc (mg/L)	Date	Conc (mg/L)	Date	Conc (mg/L)	Date	
Perchlorate	22	7/12/2022	7.5	7/12/2022	160	7/12/2022	99	7/12/2022	190	7/12/2022	75	7/12/2022	56	7/12/2022	39	7/12/2022	
Hexavalent Chromium	ND	7/12/2022	0.0037	7/12/2022	0.30	7/12/2022	0.13	7/12/2022	0.58	7/12/2022	0.46	7/12/2022	0.068	7/12/2022	0.041	7/12/2022	
Total Chromium	ND	7/12/2022	ND	7/12/2022	0.30	7/12/2022	0.13	7/12/2022	0.59	7/12/2022	0.47	7/12/2022	0.064	7/12/2022	0.043	7/12/2022	

Notes:  
 Flow reported as gpm is a daily average calculated from the totalizer reading.  
 ND = Not detected above laboratory method detection limit (ClO<sub>2</sub> = 0.5 ug/L; ClO<sub>3</sub> = 10 ug/L; NO<sub>2</sub>-N = 0.055 mg/L, Cr(VI) = 0.25 ug/L).  
 ART-1, 2, 3, 4, 7B, and 8 have adjacent recovery wells, both of which can be used for extraction. The pumping well can be chosen manually or automatically, based on operational considerations.  
 The wells with transducers are ART-1, -2, -3, -4, -7A, -8, -9, and PC-150  
 1: Analytical results are reported from Eurofins TestAmerica.  
 2: On 07/27, AWF offline due to electrical storm.  
 3: From 07/14 to 07/22 and on 07/27, ART-1A switched to ART-1  
 4: On 07/14 and 07/27, ART-2/2A offline due to maintenance.  
 5: On 07/20 and 07/27, ART-4 switched to ART-4A.  
 6: On 07/27, ART-7A switched to ART-7.  
 7: On 07/27, ART-8A switched to ART-8.  
 8: Duplicates taken on 07/12 for well ART-8A; average of both values is presented and used for calculations.  
 9: Conducted periodic bucket tests to confirm flow rates for PC-150. Average flow of 1.5 gpm determined from flow tests is presented for 07/01-07/31 flows and used for calculation purposes. Flow was steady throughout the month but the totalizer showed zero flow because totalizer units are 1,000 gallons.

Nevada Environmental Response Trust   Groundwater Extraction and Treatment System   Enhanced Operational Metrics																				
Date	I-AR		I-AA		I-AB		I-AC		I-AD		I-B		I-C		I-D		I-E		I-F	
	Flow (gpm)	Water Elevation (ft amsl)	Flow (gpm)	Water Elevation (ft amsl)	Flow (gpm)	Water Elevation (ft amsl)	Flow (gpm)	Water Elevation (ft amsl)	Flow <sup>3</sup> (gpm)	Water Elevation (ft amsl)	Flow (gpm)	Water Elevation (ft amsl)	Flow <sup>3,4</sup> (gpm)	Water Elevation (ft amsl)	Flow <sup>5,6,7,8</sup> (gpm)	Water Elevation (ft amsl)	Flow <sup>8</sup> (gpm)	Water Elevation (ft amsl)	Flow <sup>9,10,11</sup> (gpm)	Water Elevation (ft amsl)
07/01/22	0.08	1720.32	0.89	1707.66	0.0	1718.75	0.0	1723.55	0.89	1718.67	0.35	1709.64	2.6	1708.81	1.1	1706.27	1.1	1712.61	3.2	1709.35
07/02/22	0.08	1720.39	0.89	1707.66	0.0	1718.75	0.0	1723.55	0.86	1719.03	0.34	1709.63	2.5	1708.81	1.1	1706.34	1.0	1712.88	3.1	1709.34
07/03/22	0.09	1720.29	0.89	1707.66	0.0	1718.74	0.0	1723.53	0.84	1719.31	0.35	1709.63	2.6	1708.81	1.1	1707.48	1.0	1713.06	3.1	1709.35
07/04/22	0.09	1720.30	0.89	1707.66	0.0	1718.74	0.0	1723.52	0.82	1719.47	0.33	1709.62	2.7	1708.81	1.1	1707.72	1.0	1713.47	3.1	1709.32
07/05/22	0.09	1720.31	0.89	1707.65	0.0	1718.73	0.0	1723.51	0.81	1719.56	0.35	1709.63	2.3	1708.70	1.0	1712.32	0.98	1713.76	3.0	1709.33
07/06/22	0.08	1720.44	0.89	1707.65	0.0	1718.74	0.0	1723.50	0.80	1719.61	0.35	1709.62	2.0	1714.74	1.0	1710.41	0.98	1713.81	2.9	1709.31
07/07/22	0.09	1720.38	0.89	1707.65	0.014	1718.44	0.0	1723.49	0.95	1717.45	0.34	1709.62	1.9	1715.10	1.1	1706.88	1.1	1709.71	2.8	1709.30
07/08/22	0.09	1720.31	0.89	1707.65	0.0	1718.73	0.0	1723.48	1.0	1716.67	0.33	1709.62	2.4	1711.82	1.1	1705.61	1.1	1708.77	2.8	1709.26
07/09/22	0.09	1720.38	0.89	1707.65	0.0	1718.73	0.0	1723.46	0.97	1717.13	0.35	1709.62	2.5	1710.47	1.1	1705.63	1.1	1709.59	2.8	1709.23
07/10/22	0.08	1720.48	0.89	1707.65	0.0	1718.72	0.0	1723.47	0.96	1717.31	0.37	1709.62	2.5	1710.50	1.1	1705.64	1.1	1711.34	2.8	1709.22
07/11/22	0.08	1720.57	0.89	1707.65	0.0	1718.71	0.0	1723.47	0.94	1717.54	0.36	1709.61	2.4	1710.57	1.1	1705.64	1.0	1712.02	2.8	1709.21
07/12/22	0.09	1720.44	0.89	1707.66	0.0	1718.70	0.0	1723.47	0.92	1717.88	0.36	1709.60	2.5	1709.10	1.1	1705.65	1.0	1712.39	2.7	1709.02
07/13/22	0.08	1720.37	0.89	1707.64	0.0	1718.69	0.03	1721.33	0.90	1718.24	0.36	1709.61	2.5	1708.78	1.1	1705.65	0.98	1712.67	2.6	1708.97
07/14/22	0.08	1720.47	0.89	1707.64	0.0	1718.70	0.0	1723.53	0.87	1718.56	0.38	1709.60	2.5	1708.76	1.1	1705.65	0.97	1712.96	2.4	1710.82
07/15/22	0.08	1720.43	0.89	1707.66	0.0	1718.72	0.0	1723.56	0.86	1718.79	0.36	1709.58	2.6	1708.76	1.1	1705.65	1.0	1713.09	2.2	1714.02
07/16/22	0.08	1720.48	0.89	1707.65	0.0	1718.71	0.0	1723.53	0.81	1719.34	0.33	1709.57	2.5	1708.76	1.1	1705.65	0.99	1713.20	2.1	1715.82
07/17/22	0.08	1720.56	0.89	1707.64	0.0	1718.71	0.0	1723.51	0.35	1722.65	0.37	1709.55	2.5	1708.76	1.0	1705.79	0.96	1713.29	2.0	1716.26
07/18/22	0.08	1720.47	0.89	1707.64	0.0	1718.68	0.0	1723.51	0.32	1722.92	0.37	1709.59	2.5	1708.75	1.0	1705.71	0.96	1713.43	2.3	1714.86
07/19/22	0.08	1720.43	0.89	1707.64	0.0	1718.67	0.0	1723.52	0.33	1722.90	0.38	1709.55	2.5	1708.74	1.0	1705.65	0.97	1713.55	2.6	1709.04
07/20/22	0.08	1720.53	0.89	1707.63	0.0	1718.67	0.0	1723.52	0.32	1722.94	0.37	1709.54	2.5	1708.73	1.0	1705.74	0.94	1713.64	2.5	1709.04
07/21/22	0.08	1720.68	0.89	1707.64	0.0	1718.66	0.0	1723.55	0.32	1722.98	0.36	1709.58	2.5	1708.73	1.0	1705.88	0.93	1713.71	2.5	1709.04
07/22/22	0.08	1720.73	0.89	1707.63	0.0	1718.66	0.0	1723.55	0.32	1722.99	0.34	1709.62	2.5	1708.73	1.0	1706.39	0.93	1713.73	2.5	1709.04
07/23/22	0.07	1720.79	0.88	1707.63	0.0	1718.65	0.0	1723.53	0.32	1722.98	0.34	1709.63	2.5	1708.73	1.0	1706.66	0.92	1713.73	2.5	1709.04
07/24/22	0.07	1720.87	0.88	1707.63	0.0	1718.65	0.0	1723.53	0.31	1723.00	0.34	1709.59	2.5	1708.73	1.00	1707.34	0.93	1713.79	2.5	1709.04
07/25/22	0.07	1720.88	0.88	1707.63	0.0	1718.64	0.0	1723.57	0.30	1723.02	0.32	1709.57	2.5	1708.73	0.96	1708.77	0.93	1713.94	2.5	1709.04
07/26/22	0.07	1720.97	0.88	1707.63	0.0	1718.65	0.0	1723.57	0.30	1723.06	0.32	1709.64	2.6	1708.73	0.95	1709.30	0.90	1714.16	2.5	1709.04
07/27/22	0.08	1720.95	0.88	1707.63	0.0	1718.65	0.0	1723.55	0.29	1723.08	0.33	1709.62	2.6	1708.73	0.94	1709.77	0.89	1714.20	2.5	1709.04
7/28/22 <sup>2</sup>	0.08	1720.80	0.88	1707.75	0.0	1718.75	0.0	1723.57	0.20	1723.55	0.26	1711.12	2.7	1709.27	0.31	1717.34	0.71	1715.49	2.7	1710.08
07/29/22	0.08	1720.63	0.89	1707.62	0.0	1718.96	0.0	1723.56	0.20	1723.63	0.26	1711.53	2.8	1708.73	0.33	1718.35	0.69	1715.79	3.1	1708.82
7/30/22 <sup>2</sup>	0.07	1720.78	0.90	1707.65	0.0	1719.00	0.0	1723.56	0.20	1723.69	0.31	1710.48	2.8	1708.86	0.47	1718.18	0.65	1716.14	3.4	1709.20
07/31/22	0.07	1720.96	0.90	1707.62	0.0	1718.92	0.0	1723.54	0.21	1723.64	0.30	1709.74	2.7	1708.74	0.57	1717.72	0.76	1715.51	3.5	1708.73
Monthly Average	0.08	1720.56	0.89	1707.65	0.0	1718.72	0.0030	1723.45	0.60	1720.70	0.34	1709.75	2.5	1709.57	0.97	1708.17	0.95	1713.21	2.7	1710.01
Analytical <sup>1</sup>	Conc (mg/L)	Date	Conc (mg/L)	Date	Conc (mg/L)	Date	Conc (mg/L)	Date	Conc (mg/L)	Date	Conc (mg/L)	Date	Conc (mg/L)	Date	Conc (mg/L)	Date	Conc (mg/L)	Date	Conc (mg/L)	Date
Perchlorate	360	7/7/2022	27	7/7/2022	60	7/7/2022	190	7/13/2022	190	7/13/2022	240	7/7/2022	370	7/7/2022	440	7/7/2022	370	7/7/2022	510	7/7/2022
Hexavalent Chromium	0.62	7/7/2022	0.053	7/7/2022	0.0095	7/7/2022	1.7	7/13/2022	1.8	7/13/2022	0.14	7/7/2022	2.5	7/7/2022	4.5	7/7/2022	5.8	7/7/2022	12	7/7/2022
Total Chromium	1.2	7/7/2022	0.053	7/7/2022	0.019	7/7/2022	1.9	7/13/2022	1.8	7/13/2022	0.14	7/7/2022	2.5	7/7/2022	4.5	7/7/2022	5.9	7/7/2022	11	7/7/2022

Notes:  
 Flow reported as gpm is a daily average calculated from the totalizer reading.  
 ND = Not detected above laboratory method detection limit (ClO<sub>2</sub> = 0.5 ug/L; ClO<sub>3</sub> = 10 ug/L; NO<sub>2</sub>-N = 0.055 mg/L, Cr(VI) = 0.25 ug/L).  
 1: Analytical results are reported from Eurofins TestAmerica.  
 2: On 07/28 and 07/30, IWF offline briefly due to maintenance.  
 3: On 07/08, I-AD and I-C adjusted to meet flow targets as directed by the Trust.  
 4: On 07/12, I-C, I-N, and I-X adjusted to meet flow targets as directed by the Trust.  
 5: On 07/07, I-D, I-L, I-M, and I-N adjusted to meet flow targets as directed by the Trust.  
 6: On 07/29, I-D offline due to maintenance.  
 7: On 07/30, I-D, I-H, I-O, I-P, and I-W adjusted to meet flow targets as directed by the Trust.  
 8: On 07/31, I-D, I-E, I-L, I-N, I-R, I-S, and I-X adjusted to meet flow targets as directed by the Trust.  
 9: On 07/13, I-F adjusted to meet flow targets as directed by the Trust.  
 10: On 07/14, I-F, I-H, I-S, and I-Z adjusted to meet flow targets as directed by the Trust.  
 11: On 07/18, I-F and I-H adjusted to meet flow targets as directed by the Trust.

Nevada Environmental Response Trust   Groundwater Extraction and Treatment System   Enhanced Operational Metrics																				
Date	I-G		I-H		I-I		I-J		I-K		I-L		I-M		I-N		I-O		I-P	
	Flow <sup>12</sup> (gpm)	Water Elevation (ft amsl)	Flow <sup>7,10,11</sup> (gpm)	Water Elevation (ft amsl)	Flow <sup>14</sup> (gpm)	Water Elevation (ft amsl)	Flow (gpm)	Water Elevation (ft amsl)	Flow (gpm)	Water Elevation (ft amsl)	Flow <sup>8</sup> (gpm)	Water Elevation (ft amsl)	Flow <sup>5</sup> (gpm)	Water Elevation (ft amsl)	Flow <sup>4,5,8,15</sup> (gpm)	Water Elevation (ft amsl)	Flow <sup>7</sup> (gpm)	Water Elevation (ft amsl)	Flow <sup>7</sup> (gpm)	Water Elevation (ft amsl)
07/01/22	0.24	1711.85	0.75	1709.41	3.2	1721.37	5.8	1712.09	3.1	1709.44	0.94	1714.13	2.0	1716.69	1.6	1716.61	0.63	1720.73	1.9	1719.63
07/02/22	0.24	1711.82	0.73	1709.39	3.2	1721.36	5.8	1712.09	3.1	1709.38	0.87	1714.69	2.0	1716.66	1.6	1716.59	0.62	1720.73	1.9	1719.62
07/03/22	0.24	1711.82	0.78	1709.37	3.3	1721.36	5.8	1712.09	3.1	1709.32	0.9	1714.84	1.9	1716.66	1.5	1716.66	0.65	1720.72	1.9	1719.59
07/04/22	0.24	1711.83	0.78	1709.37	3.4	1721.35	5.8	1712.09	3.1	1709.31	0.87	1714.71	1.9	1716.61	1.3	1716.96	0.67	1720.71	1.9	1719.57
07/05/22	0.24	1711.78	0.78	1709.33	3.4	1721.34	5.7	1712.09	3.1	1708.68	0.85	1714.90	1.9	1716.61	1.6	1716.26	0.61	1720.70	1.9	1719.55
07/06/22	0.24	1711.81	0.77	1709.31	3.4	1721.33	5.7	1712.09	3.1	1708.31	0.82	1715.23	1.9	1716.64	1.6	1716.25	0.53	1720.70	1.9	1719.50
07/07/22	0.23	1711.89	0.77	1709.29	3.3	1721.32	5.7	1712.07	3.1	1708.31	1.0	1714.32	2.1	1716.12	1.8	1715.42	0.83	1720.56	1.9	1719.43
07/08/22	0.23	1711.92	0.74	1709.29	3.3	1721.30	5.7	1712.07	3.1	1708.31	1.1	< 1714.01	2.1	1715.93	1.6	1715.69	0.93	1720.50	1.9	1719.39
07/09/22	0.23	1711.89	0.72	1709.28	3.3	1721.29	5.7	1712.07	3.1	1708.31	1.1	< 1714.01	2.1	1715.91	1.5	1716.17	0.90	1720.49	1.9	1719.36
07/10/22	0.23	1711.85	0.73	1709.27	3.2	1721.28	5.7	1712.07	3.1	1708.31	1.0	< 1714.01	2.1	1715.91	1.6	1715.51	0.87	1720.47	1.9	1719.32
07/11/22	0.23	1711.85	0.71	1709.26	3.2	1721.27	5.7	1712.13	3.1	1708.31	1.0	< 1714.01	2.1	1715.89	1.7	1714.98	0.81	1720.47	1.8	1719.30
07/12/22	0.23	1711.81	0.66	1709.52	3.1	1721.26	5.7	1712.13	3.1	1708.31	1.0	< 1714.01	2.1	1715.86	2.0	1712.94	0.76	1720.46	1.8	1719.28
07/13/22	0.23	1711.81	0.70	1709.53	3.1	1721.25	5.7	1712.13	3.1	1708.36	0.99	< 1714.01	2.1	1715.85	2.0	1712.41	0.75	1720.45	1.8	1719.25
07/14/22	0.23	1711.77	0.69	1709.69	3.9	1721.30	5.7	1712.13	3.1	1708.39	0.95	< 1714.01	2.1	1715.81	2.0	1712.48	0.75	1720.44	1.8	1719.22
07/15/22	0.23	1711.78	0.54	1718.70	4.2	1721.29	5.7	1712.12	3.0	1708.51	0.93	< 1714.06	2.1	1715.80	2.0	1712.50	0.96	1720.44	1.8	1719.25
07/16/22	0.23	1711.81	0.28	1720.22	3.5	1721.31	5.7	1712.12	3.0	1708.51	0.94	< 1714.01	2.1	1715.78	1.9	1712.77	0.93	1720.48	1.8	1719.38
07/17/22	0.23	1711.82	0.20	1720.50	3.2	1721.46	5.8	1712.12	3.0	1708.45	0.95	< 1714.01	2.1	1715.77	1.9	1712.93	0.89	1720.55	1.8	1719.53
07/18/22	0.23	1711.84	0.22	1720.52	3.1	1721.65	5.9	1712.12	3.0	1708.57	0.94	< 1714.01	2.1	1715.78	1.9	1713.25	0.83	1720.64	1.8	1719.70
07/19/22	0.23	1711.89	0.29	1720.41	3.0	1721.70	6.0	1712.13	3.0	1709.97	1.0	< 1714.01	2.1	1715.78	1.8	1713.40	0.81	1720.71	1.8	1719.85
07/20/22	0.23	1711.88	0.25	1720.54	3.1	1721.69	6.0	1712.13	2.8	1712.81	0.98	< 1714.01	2.1	1715.78	1.8	1713.38	0.72	1720.77	1.8	1719.96
07/21/22	0.23	1711.88	0.21	1720.67	3.2	1721.50	5.8	1712.13	2.8	1712.83	0.96	< 1714.01	2.1	1715.78	1.8	1713.40	0.70	1720.75	1.8	1720.00
07/22/22	0.23	1711.83	0.21	1720.64	3.2	1721.43	5.8	1712.12	2.8	1712.47	1.1	< 1714.01	2.1	1715.77	1.8	1713.37	0.69	1720.72	1.8	1719.98
07/23/22	0.16	1713.96	0.66	1718.50	3.1	1721.38	5.7	1712.12	2.7	1712.87	1.0	< 1714.01	2.1	1715.78	1.8	1713.40	0.69	1720.66	1.8	1719.79
07/24/22	0.00	1719.55	0.62	1718.49	3.1	1721.33	5.7	1712.12	2.8	1712.45	1.0	< 1714.01	2.1	1715.80	1.8	1713.48	0.69	1720.60	1.8	1719.61
07/25/22	0.13	1715.17	0.57	1718.70	3.2	1721.30	5.7	1712.12	2.8	1712.43	1.0	< 1714.01	2.1	1715.78	1.8	1713.73	0.74	1720.55	1.8	1719.52
07/26/22	0.24	1711.24	0.55	1719.05	3.3	1721.28	5.7	1712.12	2.7	1712.77	1.0	< 1714.01	2.1	1715.80	1.7	1714.19	0.90	1720.53	1.8	1719.48
07/27/22	0.24	1711.24	0.49	1719.21	3.1	1721.27	5.7	1712.12	2.6	1713.66	1.0	< 1714.01	2.1	1715.82	1.8	1714.12	0.93	1720.51	1.8	1719.45
7/28/22 <sup>2</sup>	0.23	1711.27	0.59	1718.27	3.1	1721.36	5.6	1712.75	2.3	1715.24	0.66	1716.76	1.9	1716.38	1.4	1716.09	0.51	1720.71	1.7	1719.63
07/29/22	0.23	1711.24	0.69	1717.62	3.2	1721.28	5.7	1712.12	2.4	1715.19	0.66	1717.24	2.0	1716.41	1.4	1716.96	0.48	1720.71	1.8	1719.51
7/30/22 <sup>2</sup>	0.23	1711.25	0.58	1714.98	3.2	1721.31	5.7	1712.27	2.5	1715.16	0.66	1717.43	2.0	1716.62	1.4	1717.30	0.58	1720.68	1.9	1719.50
07/31/22	0.23	1711.24	0.74	1715.67	3.1	1721.26	5.8	1712.13	2.5	1715.13	0.80	1716.25	2.0	1716.67	1.5	1717.25	0.65	1720.57	1.9	1719.20
Monthly Average	0.22	1712.15	0.58	1714.65	3.3	1721.36	5.7	1712.13	2.9	1710.58	0.94	1714.54	2.1	1716.08	1.7	1714.72	0.74	1720.60	1.8	1719.53
Analytical <sup>1</sup>	Conc (mg/L)	Date	Conc (mg/L)	Date	Conc (mg/L)	Date	Conc (mg/L)	Date	Conc (mg/L)	Date	Conc (mg/L)	Date	Conc (mg/L)	Date	Conc (mg/L)	Date	Conc (mg/L)	Date	Conc (mg/L)	Date
Perchlorate	850	7/6/2022	670	7/6/2022	400	7/13/2022	160	7/13/2022	230	7/13/2022	250	7/7/2022	540	7/7/2022	450	7/7/2022	580	7/6/2022	590	7/6/2022
Hexavalent Chromium	16	7/6/2022	12	7/6/2022	6.1	7/13/2022	3.5	7/13/2022	2.4	7/13/2022	1.4	7/7/2022	5.1	7/7/2022	6.6	7/7/2022	8.6	7/6/2022	11	7/6/2022
Total Chromium	17	7/6/2022	12	7/6/2022	6.5	7/13/2022	3.7	7/13/2022	2.5	7/13/2022	1.4	7/7/2022	5.3	7/7/2022	6.9	7/7/2022	8.5	7/6/2022	9.9	7/6/2022

- Notes:
- Flow reported as gpm is a daily average calculated from the totalizer reading.
  - 1: Analytical results are reported from Eurofins TestAmerica.
  - 2: On 07/28 and 07/30, IWF offline briefly due to maintenance.
  - 4: On 07/12, I-C, I-N, and I-X adjusted to meet flow targets as directed by the Trust.
  - 5: On 07/07, I-D, I-L, I-M, and I-N adjusted to meet flow targets as directed by the Trust.
  - 7: On 07/30, I-D, I-H, I-O, I-P, and I-W adjusted to meet flow targets as directed by the Trust.
  - 8: On 07/31, I-D, I-E, I-L, I-N, I-R, I-S, and I-X adjusted to meet flow targets as directed by the Trust.
  - 10: On 07/14, I-F, I-H, I-S, and I-Z adjusted to meet flow targets as directed by the Trust.
  - 11: On 07/18, I-F and I-H adjusted to meet flow targets as directed by the Trust.
  - 12: On 07/23, I-G offline due to maintenance.
  - 13: On 07/23 and 07/28, I-H adjusted to meet flow targets as directed by the Trust.
  - 14: On 07/14, I-I offline due to maintenance.
  - 15: On 07/04, I-N and I-X adjusted to meet flow targets as directed by the Trust.
  - 16: On 07/10, I-N adjusted to meet flow targets as directed by the Trust.

Nevada Environmental Response Trust   Groundwater Extraction and Treatment System   Enhanced Operational Metrics																				
Date	I-Q		I-R		I-S		I-T		I-U		I-V		I-W		I-X		I-Y		I-Z	
	Flow (gpm)	Water Elevation (ft amsl)	Flow <sup>8,17,18</sup> (gpm)	Water Elevation (ft amsl)	Flow <sup>8,10,20</sup> (gpm)	Water Elevation (ft amsl)	Flow <sup>21</sup> (gpm)	Water Elevation (ft amsl)	Flow (gpm)	Water Elevation (ft amsl)	Flow (gpm)	Water Elevation (ft amsl)	Flow <sup>7</sup> (gpm)	Water Elevation (ft amsl)	Flow <sup>4,8,15</sup> (gpm)	Water Elevation (ft amsl)	Flow <sup>22,23</sup> (gpm)	Water Elevation (ft amsl)	Flow <sup>10,23,24</sup> (gpm)	Water Elevation (ft amsl)
07/01/22	0.27	1715.50	1.1	1711.67	1.6	1706.52	0.59	1707.67	0.78	1707.61	4.1	1718.86	0.76	1713.57	2.7	1712.44	1.2	1699.94	6.1	1710.11
07/02/22	0.27	1715.50	1.1	1711.84	1.6	1706.52	0.58	1707.66	0.78	1707.61	4.1	1718.85	0.76	1713.69	2.7	1712.44	1.2	1699.94	6.1	1710.11
07/03/22	0.26	1715.52	1.0	1711.86	1.6	1706.52	0.58	1707.66	0.78	1707.61	4.2	1718.83	0.76	1713.61	2.7	1712.41	1.2	1699.94	6.2	1710.11
07/04/22	0.26	1715.51	1.1	1711.88	1.6	1706.51	0.58	1707.65	0.78	1707.61	4.3	1718.80	0.75	1713.36	2.7	1712.52	1.2	1699.94	6.4	1710.22
07/05/22	0.26	1715.51	1.1	1712.05	1.6	1706.52	0.58	1707.65	0.77	1707.61	4.3	1718.78	0.76	1713.10	3.0	1705.37	1.2	1699.94	6.0	1710.11
07/06/22	0.28	1715.25	1.1	1712.46	1.6	1706.52	0.58	1707.64	0.77	1707.61	4.3	1718.76	0.77	1712.38	2.9	1705.82	1.3	1699.94	6.2	1710.11
07/07/22	0.29	1715.16	1.1	1712.47	1.6	1706.52	0.58	1707.57	0.77	1707.61	4.3	1718.72	0.77	1710.64	2.9	1706.75	1.2	1699.88	6.3	1710.14
07/08/22	0.28	1715.22	1.1	1712.70	1.6	1706.52	0.58	1707.55	0.77	1707.61	4.3	1718.65	0.77	1710.19	2.9	1706.41	1.2	1699.88	6.3	1710.14
07/09/22	0.28	1715.24	1.1	1712.75	1.6	1706.52	0.58	1707.55	0.77	1707.61	4.3	1718.61	0.76	1710.02	2.8	1707.13	1.2	1699.88	6.4	1710.14
07/10/22	0.27	1715.26	1.0	1712.88	1.6	1706.52	0.58	1707.55	0.77	1707.61	4.1	1718.57	0.76	1710.03	2.8	1708.73	1.2	1699.88	6.2	1710.14
07/11/22	0.27	1715.26	1.1	1712.12	1.6	1706.61	0.58	1707.55	0.77	1707.61	4.1	1718.55	0.76	1710.02	2.8	1709.11	1.2	1699.88	5.9	1710.14
07/12/22	0.27	1715.27	1.0	1711.94	1.6	1706.64	0.58	1707.55	0.77	1707.61	4.1	1718.52	0.75	1710.04	3.0	1700.52	1.2	1699.88	5.8	1710.14
07/13/22	0.27	1715.28	1.0	1712.09	1.6	1706.64	0.58	1707.55	0.77	1707.61	4.1	1718.49	0.74	1710.62	2.9	1698.31	1.2	1699.88	5.8	1710.14
07/14/22	0.26	1715.31	0.96	1713.62	1.6	1706.57	0.57	1707.55	0.77	1707.61	4.1	1718.48	0.73	1711.22	2.9	1698.32	1.2	1699.88	5.8	1711.28
07/15/22	0.26	1715.38	1.0	1713.77	1.6	1706.53	0.57	1707.55	0.77	1707.61	4.2	1718.46	0.73	1711.49	2.9	1698.33	1.2	1699.94	6.0	1712.29
07/16/22	0.27	1715.41	1.0	1713.70	1.6	1706.53	0.57	1707.55	0.78	1707.61	4.2	1718.51	0.73	1712.52	2.9	1698.89	1.2	1699.94	5.4	1713.22
07/17/22	0.27	1715.45	1.0	1713.41	1.6	1706.53	0.58	1707.55	0.78	1707.61	4.1	1718.72	0.73	1713.73	2.9	1700.44	1.2	1699.94	3.7	1718.68
07/18/22	0.27	1715.47	1.1	1711.68	1.6	1706.53	0.58	1707.55	0.76	1707.61	4.1	1719.02	0.73	1714.71	2.9	1702.02	1.2	1699.94	2.5	1720.24
07/19/22	0.26	1715.36	1.1	1711.66	1.6	1706.53	0.58	1707.55	0.77	1707.61	4.1	1719.16	0.73	1715.62	2.9	1700.88	1.2	1699.94	3.5	1719.89
07/20/22	0.26	1715.32	1.1	1711.61	1.6	1706.53	0.91	1707.47	0.77	1707.61	4.1	1719.21	0.73	1716.47	2.9	1701.46	1.2	1699.94	5.3	1715.15
07/21/22	0.26	1715.33	1.1	1711.66	1.6	1706.53	0.73	1707.45	0.81	1707.61	4.1	1719.01	0.72	1716.93	2.9	1701.52	1.2	1699.77	6.7	1710.22
07/22/22	0.26	1715.30	1.1	1711.61	1.6	1706.53	0.73	1707.45	0.81	1707.61	4.1	1718.89	0.72	1716.62	2.8	1701.77	1.2	1699.77	6.5	1710.22
07/23/22	0.26	1715.28	1.1	1711.60	1.6	1706.52	0.73	1707.45	0.80	1707.61	4.1	1718.77	0.72	1715.76	2.8	1701.82	1.2	1699.77	6.4	1710.22
07/24/22	0.26	1715.38	1.2	1711.64	1.6	1706.53	0.74	1707.45	0.79	1707.61	4.1	1718.64	0.72	1714.74	2.8	1703.15	1.2	1699.77	6.4	1710.22
07/25/22	0.26	1715.43	1.2	1711.72	1.6	1706.52	0.74	1707.44	0.78	1707.61	4.1	1718.53	0.71	1714.93	2.8	1703.99	1.2	1699.77	6.3	1710.22
07/26/22	0.26	1715.35	1.2	1712.23	1.6	1706.52	0.73	1707.44	0.77	1707.61	4.4	1718.48	0.70	1714.85	2.8	1704.28	1.2	1699.77	6.6	1710.22
07/27/22	0.26	1715.34	1.1	1712.56	1.4	1707.66	0.72	1707.44	0.78	1707.61	4.3	1718.44	0.70	1714.61	2.8	1704.77	1.2	1699.77	6.6	1710.22
7/28/22 <sup>2</sup>	0.29	1714.92	0.83	1716.34	0.62	1718.05	0.72	1707.56	0.77	1707.81	4.2	1718.76	0.61	1718.29	2.0	1712.56	1.3	1699.77	6.6	1710.42
07/29/22	0.32	1714.58	0.12	1722.09	0.74	1718.36	0.72	1707.45	0.77	1707.63	4.4	1718.55	0.65	1718.36	1.9	1714.42	1.4	1699.89	6.8	1710.19
7/30/22 <sup>2</sup>	0.22	1715.66	0.69	1718.91	0.83	1717.54	0.72	1707.52	0.76	1707.86	4.3	1718.60	0.64	1716.22	1.7	1715.06	1.4	1699.89	6.8	1710.19
07/31/22	0.26	1715.40	0.77	1720.02	1.2	1714.27	0.72	1707.51	0.77	1707.63	4.4	1718.43	0.77	1710.07	2.0	1714.34	1.3	1699.89	6.7	1710.19
Monthly Average	0.27	1715.33	1.0	1713.18	1.5	1707.93	0.64	1707.54	0.78	1707.63	4.2	1718.70	0.73	1713.50	2.7	1705.68	1.2	1699.87	5.9	1711.45
Analytical <sup>1</sup>	Conc (mg/L)	Date	Conc (mg/L)	Date	Conc (mg/L)	Date	Conc (mg/L)	Date	Conc (mg/L)	Date	Conc (mg/L)	Date	Conc (mg/L)	Date	Conc (mg/L)	Date	Conc (mg/L)	Date	Conc (mg/L)	Date
Perchlorate	550	7/6/2022	635	7/7/2022	350	7/7/2022	800	7/6/2022	820	7/6/2022	500	7/13/2022	580	7/6/2022	550	7/7/2022	360	7/7/2022	170	7/13/2022
Hexavalent Chromium	13	7/6/2022	0.85	7/7/2022	1.5	7/7/2022	15	7/6/2022	14	7/6/2022	6.2	7/13/2022	9.1	7/6/2022	9.0	7/7/2022	1.2	7/7/2022	4.7	7/13/2022
Total Chromium	13	7/6/2022	0.84	7/7/2022	1.6	7/7/2022	15	7/6/2022	14	7/6/2022	6.5	7/13/2022	9.5	7/6/2022	9.1	7/7/2022	1.2	7/7/2022	5.0	7/13/2022

- Notes:
- Analytical results are reported from Eurofins TestAmerica.
  - On 07/28 and 07/30, IWF offline briefly due to maintenance.
  - On 07/12, I-C, I-N, and I-X adjusted to meet flow targets as directed by the Trust.
  - On 07/30, I-D, I-H, I-O, I-P, and I-W adjusted to meet flow targets as directed by the Trust.
  - On 07/31, I-D, I-E, I-L, I-R, I-S, and I-X adjusted to meet flow targets as directed by the Trust.
  - On 07/14, I-F, I-H, I-S, and I-Z adjusted to meet flow targets as directed by the Trust.
  - On 07/04, I-N and I-X adjusted to meet flow targets as directed by the Trust.
  - On 07/17 and 07/29, I-R adjusted to meet flow targets as directed by the Trust.
  - From 07/29 to 07/30, I-R offline due to maintenance.
  - Duplicates taken on 06/14 for well I-R; average of both values is presented and used for calculations.
  - On 07/27, I-S offline due to maintenance.
  - On 07/19, I-T offline due to maintenance.
  - On 07/14, I-Y water level taken manually due to water level dropping below transducer level.
  - On 07/07, I-Y and I-Z water level taken manually due to water level dropping below transducer level.
  - From 07/17 to 07/20, I-Z offline due to maintenance.
  - On 07/20, I-Z adjusted to meet flow targets as directed by the Trust.

Table 4 - Treatment Plant Operational Metrics

Nevada Environmental Response Trust   Groundwater Extraction and Treatment System   Enhanced Operational Metrics																
Date	LS #2	GWTP Effluent <sup>1</sup>				GW-11 Influent <sup>1</sup>				FBR Plant Influent <sup>1</sup>						
	Flow (gpm)	Flow (gpm)	TA - Cr (TR) (mg/L)	TA - Cr (VI) (mg/L)	TA - ClO <sub>4</sub> (mg/L)	Flow <sup>3</sup> (gpm)	TA - Cr (TR) (mg/L)	TA - Cr (VI) (mg/L)	TA - ClO <sub>4</sub> (mg/L)	Flow (gpm)	TA - ClO <sub>4</sub> (mg/L)	ETI - ClO <sub>4</sub> (mg/L)	TA - ClO <sub>4</sub> (mg/L)	TA - NO <sub>2</sub> - N (mg/L)	TA - Cr (TR) (mg/L)	TA - Cr (VI) (mg/L)
07/01/22	854	61				0.0				915		59				
07/02/22	853	59				0.0				912	49	59				
07/03/22	852	57				0.0				909		56				
07/04/22	852	57				0.0				909		59				
07/05/22	851	55				0.0				906		61	100	12	0.14	0.0087
07/06/22	851	56	1.8	ND	410	1.2	0.26	0.041	45	907		55				
07/07/22	851	56				0.0				906		56				
07/08/22	850	58				0.0				907		55				
07/09/22	849	55				0.0				905	49	55				
07/10/22	850	55				0.0				904		54				
07/11/22	849	54				0.0				904		56		12	0.18	0.0033
07/12/22	849	55				0.0				904		58				
07/13/22	849	54	2.2	ND	400	0.0				903		54				
07/14/22	840	55				0.0				896		53				
07/15/22	836	54				0.0				890		48				
07/16/22	838	53				0.0				891	57	50				
07/17/22	837	51				0.0				888		43				
07/18/22	839	51				0.0				890		44		11	0.012	0.0075
07/19/22	837	51				0.0				888		46				
07/20/22	836	54	0.44	ND	440	0.0				949		57				
07/21/22	869	54				0.0				940		44				
07/22/22	844	56				0.0				905		40				
07/23/22	846	63				0.0				909	50	53				
07/24/22	848	61				0.0				909		48				
07/25/22	846	54				0.0				900		52		12	0.37	0.38
07/26/22	844	54				0.0				898		50				
07/27/22	762	55	0.63	ND	410	0.0				924		55				
07/28/22	552	54				0.0				1046		69				
07/29/22	869	60				0.0				935		39				
07/30/22	850	59				0.0				909	46	56				
07/31/22	850	62				0.0				913		57				
Monthly Average <sup>2</sup>	836	56	1.29	ND	414	0.04	0.26	0.041	45	912	50	53	100	12	0.19	0.129

Notes:  
 Flow reported as gpm is a daily average calculated from the totalizer reading. The only exceptions are the instantaneous flow readings recorded for the 1st and 2nd Stage FBR flows.  
 ND = Not detected above laboratory method detection limit (ClO<sub>4</sub> = 0.5 ug/L; ClO<sub>3</sub> = 10 ug/L; NO<sub>3</sub>-N = 0.055 mg/L, Cr(VI) = 0.25 ug/L).  
 1: ETI = Envirogen internal process control data, TA = Eurofins TestAmerica data.  
 2: All average concentrations reported are monthly flow weighted averages.  
 3: Flows bypassed GW-11 Influent and FBR Plant Influent totalizers from 06/01 to 06/30 due to FBR plant influent strainers clogging, except for monthly sampling and maintenance.

Table 4 - Treatment Plant Operational Metrics

Nevada Environmental Response Trust   Groundwater Extraction and Treatment System   Enhanced Operational Metrics														
Date	1st Stage FBR <sup>4</sup>			2nd Stage FBR <sup>4</sup>			FBR Plant Effluent <sup>1</sup>							
	Flow (gpm)	pH (s.u.)	ORP (mV)	Flow (gpm)	pH (s.u.)	ORP (mV)	Flow <sup>5</sup> (gpm)	TA - ClO <sub>2</sub> (mg/L)	ETI - ClO <sub>4</sub> (mg/L)	TA - ClO <sub>3</sub> (mg/L)	TA - Cr (TR) (mg/L)	TA - Cr (VI) (mg/L)	TA - NO <sub>3</sub> - N (mg/L)	ETI - Turbidity (NTU)
07/01/22	1002	6.9	-389	931	6.7	-410	944		ND					32
07/02/22	1004	6.9	-398	715	6.6	-424	947	0.0040	ND					35
07/03/22	981	7.0	-339	836	6.6	-1288	957		ND					25
07/04/22	999	6.9	-393	860	6.5	-394	947		ND					17
07/05/22	1005	6.9	-398	802	6.4	-397	946		ND	0.019 J	0.0077 J	ND	0.15	17
07/06/22	996	6.7	-395	793	6.3	-390	948		ND					3.0
07/07/22	996	6.8	-379	784	6.3	-386	946		ND					15
07/08/22	982	6.8	-340	838	6.3	-388	791		ND					14
07/09/22	975	6.8	-339	649	6.3	-389	929	ND	ND					12
07/10/22	966	6.8	-353	904	6.4	-390	929		ND					15
07/11/22	985	6.9	-385	861	6.4	-385	932		ND		0.021	ND	0.10	9.0
07/12/22	985	6.9	-336	745	6.4	-384	931		ND					15
07/13/22	994	6.9	-387	894	6.3	-394	937		ND					20
07/14/22	857	6.5	-318	674	8.1	-326	917		ND					6.0
07/15/22	841	6.4	-329	771	6.2	-328	880		ND					10
07/16/22	835	6.4	-341	766	6.3	-349	875	0.00054 J	ND					9.0
07/17/22	796	5.9	-319	836	5.7	-326	872		ND					15
07/18/22	760	6.4	-309	832	6.2	-352	916		ND		0.0038 J	ND	0.049 J	8.0
07/19/22	862	6.4	-224	768	6.1	-321	901		ND					6.0
07/20/22	869	6.5	-356	732	6.2	-361	881		ND					15
07/21/22	849	6.2	-344	822	5.4	-298	1014		ND					19
07/22/22	852	6.2	-357	672	6.3	-340	936		ND					13
07/23/22	842	6.3	-362	888	6.3	-353	915	ND	ND					10
07/24/22	897	6.3	-371	679	6.3	-361	897		ND					10
07/25/22	899	6.3	-391	758	6.3	-370	860		ND		0.021	ND	0.12	5.0
07/26/22	904	6.3	-396	815	6.3	-372	906		ND					11
07/27/22	903	6.5	-399	846	6.3	-374	912		ND					11
07/28/22	910	6.5	-402	833	6.2	-373	928		ND					35
07/29/22	916	6.4	-389	853	6.3	-355	921		ND					18
07/30/22	813	6.3	-361	977	6.4	-352	924	ND	ND					7.0
07/31/22	812	6.3	-398	712	6.2	-366	922		ND					7.0
Monthly Average <sup>2</sup>	912	6.6	-362	801	6.3	-398	918	0.00079	ND	0.019	0.0137	ND	0.11	14

Notes:

Flow reported as gpm is a daily average calculated from the totalizer reading. The only exceptions are the instantaneous flow readings recorded for the 1st and 2nd Stage FBR flows.

ND = Not detected above laboratory method detection limit (ClO<sub>2</sub> = 0.5 ug/L; ClO<sub>3</sub> = 10 ug/L; NO<sub>3</sub>-N= 0.055 mg/L, Cr(VI) = 0.25 ug/L).

J = Result is less than the reporting limit but greater than or equal to the method detection limit and the concentration is an approximate value.

1: ETI = Envirogen internal process control data, TA = Eurofins TestAmerica data.

2: All average concentrations reported are monthly flow weighted averages.

4: For 1st and 2nd stage FBRs, flow measurements are collected from the influent lines and pH and ORP samples are collected from the recycle lines.

5: FBR Plant Effluent represents effluent discharged to Las Vegas Wash. While this may represent the entirety of the FBR Plant effluent, any diversions to GW-11 are subtracted from the original effluent flow.

GW-11 Level Monitoring <sup>1</sup>		
Date	Field Measurement (ft)	Volume (MG)
07/15/22	30.8	35.6
07/31/22	30.8	35.6

GW-11 Leak Detection Monitoring				
Date	Amount Pumped <sup>2</sup> (gallons)			
	NW Corner	NE Corner	SW Corner	SE Corner
07/12/22	0	0	518	0
07/26/22	0	0	579	0

GW-11 Composite Sample <sup>3</sup>		
Analytes	Concentration	Units
Perchlorate	16	mg/L
Chlorate	13	mg/L
Ammonia as N	0.43	mg/L
Total Phosphorus	0.31	mg/L
Total Dissolved Solids (TDS)	11,000 D	mg/L
Total Suspended Solids (TSS)	54 D	mg/L
pH	8.5 HF	s.u.
Calcium	570	mg/L
Iron	0.6	mg/L
Chromium (total)	0.032	mg/L
Chromium VI	0.0046	mg/L
Chloride	4,600	mg/L
Nitrate as N	2.9	mg/L
Sulfate	3,800	mg/L

Notes:

D = Result was obtained from the analysis of a dilution.

HF = Field parameter with a holding time of 15 minutes. Test performed by laboratory at client's request.

1: A transducer installed along the eastern berm provides water pressure measurements that are correlated to elevations for calculation of water depths.

2: Pumping occurs over three consecutive days. The total amount pumped over the three day period is listed with the last day pumping occurred.

3: GW-11 Corner Composite Sample is collected quarterly, most recent sampling results are presented. Sampled on: May 11, 2022



Nevada Environmental Response Trust   Groundwater Extraction and Treatment System   Enhanced Operational Metrics						
Date	Flow <sup>1</sup> (gpm)	FBR Influent Concentration			Influent Function Load <sup>2</sup> (lbs/day)	6 Month Rolling Average (lbs/day)
		ClO <sub>4</sub> (mg/L)	NO <sub>3</sub> as N (mg/L)	ClO <sub>3</sub> (mg/L)		
Aug 2021	1,063	62	8.6	120	502	460
Sep 2021	954	62	11	130	492	467
Oct 2021	924	66	11	120	464	475
Nov 2021	879	49	10	120	406	473
Dec 2021	934	42	9.6	110	391	471
Jan 2022	992	58	11	120	481	457
Feb 2022	1,050	56	18	110	563	466
Mar 2022	1,022	50	20	110	556	477
Apr 2022	957	59	17	110	509	485
May 2022	944	56	14	110	471	495
June 2022	921	52	12	110	430	502
July 2022	912	50	12	100	402	488

Notes:

Concentrations and flow are presented as monthly average.

1: Flow used in loading calculation is average monthly FBR influent flow.

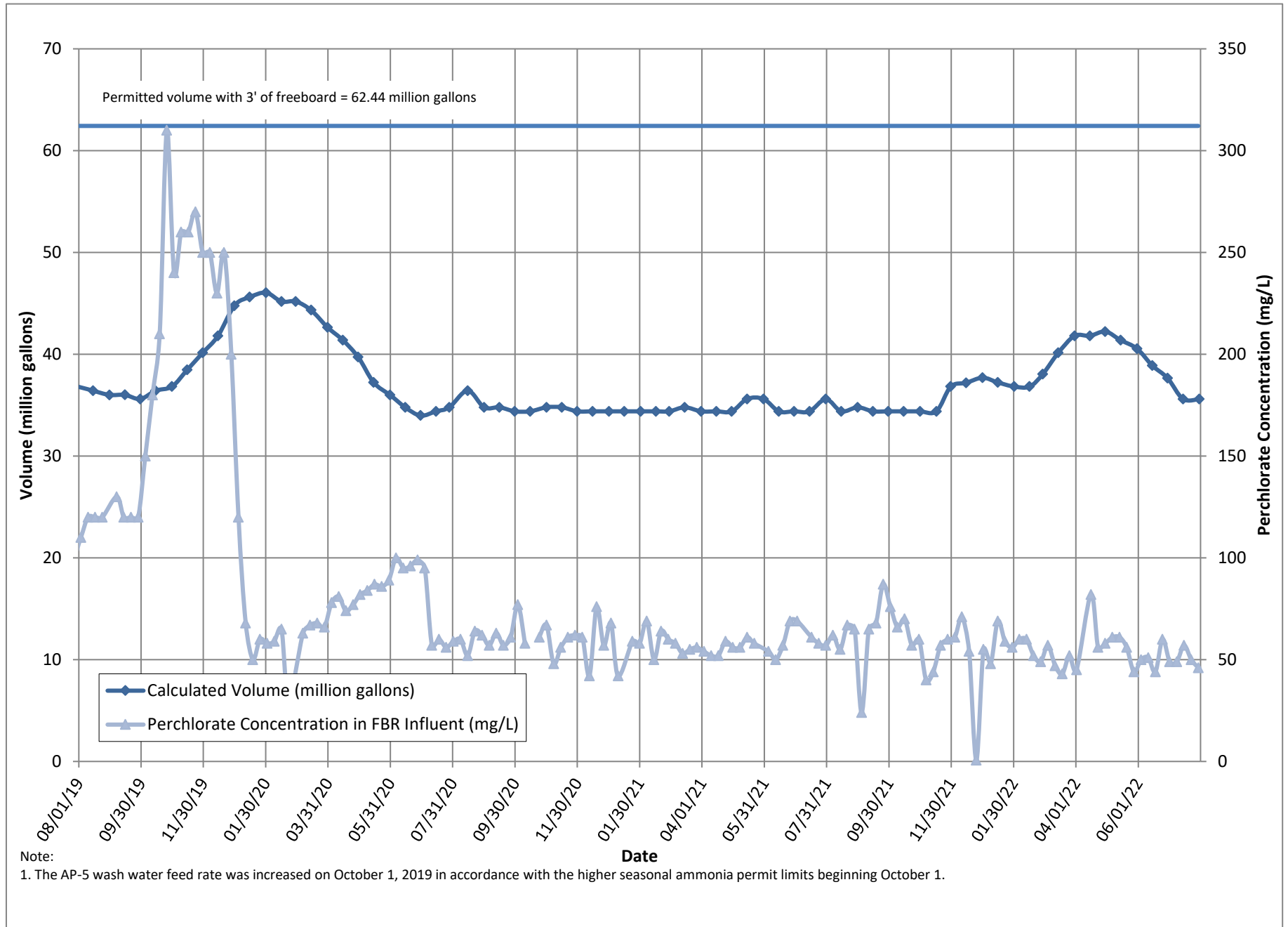
2: FBR loading calculated as  $[(0.9 \cdot \text{NO}_3 \text{ as N} + 0.17 \cdot \text{ClO}_3 + 0.18 \cdot \text{ClO}_4) \cdot \text{Flow} \cdot 1440 / 1000000 \cdot 8.34]$ .

Table 7 - AP Area Operational Metrics

Nevada Environmental Response Trust   Groundwater Extraction and Treatment System   Enhanced Operational Metrics																
Date	E1-1		E1-2		E1-3		E2-1		E2-2		E2-3		E2-4		E2-5	
	Flow (gpm)	Water Elevation (ft amsl)	Flow (gpm)	Water Elevation (ft amsl)	Flow (gpm)	Water Elevation (ft amsl)	Flow (gpm)	Water Elevation (ft amsl)	Flow (gpm)	Water Elevation (ft amsl)	Flow (gpm)	Water Elevation (ft amsl)	Flow (gpm)	Water Elevation (ft amsl)	Flow <sup>3</sup> (gpm)	Water Elevation (ft amsl)
07/01/22	3.1	1712.13	0.93	1710.95	0.82	1712.04	1.1	1715.62	0.97	1716.02	1.3	1714.85	1.3	1715.74	0.37	1712.81
07/02/22	3.1	1711.04	0.92	1709.78	0.83	1712.34	1.1	1716.14	1.1	1716.27	1.3	1715.64	1.1	1716.79	0.39	1711.87
07/03/22	3.1	1711.28	0.92	1710.75	0.81	1711.87	1.1	1715.77	0.97	1716.52	1.3	1714.90	1.1	1716.29	0.40	1712.57
07/04/22	3.1	1711.58	0.94	1711.18	0.82	1712.51	1.0	1716.11	1.1	1715.85	1.2	1715.40	1.1	1715.94	0.41	1711.97
07/05/22	3.1	1710.53	0.93	1710.06	0.82	1711.62	1.0	1716.12	1.0	1715.50	1.3	1715.23	1.1	1716.71	0.41	1710.57
07/06/22	3.1	1710.31	0.92	1709.90	0.83	1711.01	1.0	1714.49	1.0	1714.91	1.2	1714.60	1.1	1715.33	0.11	1714.96
07/07/22	3.1	1710.46	0.93	1710.01	0.81	1711.27	1.0	1715.16	1.0	1715.10	1.2	1715.16	1.1	1715.20	0.15	1714.60
07/08/22	3.1	1710.53	0.96	1710.24	0.83	1712.64	1.0	1717.04	1.0	1716.17	1.2	1716.77	1.0	1717.49	0.09	1715.21
07/09/22	3.1	1710.57	0.95	1709.90	0.83	1712.80	1.0	1715.81	1.0	1715.47	1.2	1715.90	1.0	1716.75	0.12	1715.17
07/10/22	3.1	1710.33	0.95	1710.29	0.84	1711.47	1.0	1716.04	1.0	1716.34	1.2	1715.37	1.0	1717.26	0.21	1715.01
07/11/22	3.1	1710.26	0.94	1710.37	0.83	1711.41	1.1	1715.96	1.1	1715.86	1.3	1715.54	1.1	1716.99	0.16	1714.88
07/12/22	3.1	1710.38	0.94	1710.51	0.84	1711.50	0.97	1716.10	0.99	1716.51	0.98	1715.48	0.99	1717.21	0.19	1715.21
07/13/22	3.1	1710.22	0.95	1709.21	0.84	1711.28	0.74	1717.67	1.0	1715.24	1.0	1716.76	1.0	1716.64	0.30	1713.20
07/14/22	3.1	1710.28	0.95	1709.40	0.84	1711.48	0.98	1717.21	1.0	1715.17	0.95	1716.52	1.1	1716.59	0.29	1713.41
07/15/22	3.1	1710.62	0.93	1710.95	0.84	1711.12	0.96	1716.24	1.0	1715.21	0.91	1716.50	1.0	1716.53	0.25	1713.47
07/16/22	3.1	1711.32	0.95	1710.38	0.83	1711.31	0.96	1716.27	1.0	1715.27	0.92	1716.55	1.0	1716.70	0.26	1713.39
07/17/22	3.1	1710.72	0.96	1709.85	0.85	1712.42	0.96	1717.90	0.97	1716.96	0.97	1718.14	1.0	1717.26	0.36	1712.14
07/18/22	3.1	1710.81	0.94	1709.74	0.80	1711.77	1.0	1716.37	0.94	1716.39	0.99	1718.08	1.0	1716.89	0.33	1712.21
07/19/22	3.1	1710.59	0.93	1709.88	0.89	1711.88	0.99	1716.06	0.99	1716.67	1.0	1718.00	1.1	1717.02	0.32	1712.25
07/20/22	3.1	1710.91	0.99	1710.01	0.81	1711.39	0.97	1715.94	0.91	1716.42	1.0	1716.29	1.1	1715.46	0.26	1714.04
07/21/22	3.1	1710.81	0.90	1710.29	0.91	1711.02	1.1	1715.87	0.99	1716.06	1.0	1715.75	1.0	1714.49	0.19	1713.52
07/22/22	3.2	1710.42	0.98	1709.81	0.88	1710.80	1.0	1716.36	1.0	1713.78	1.0	1715.02	1.1	1716.00	0.15	1714.40
07/23/22	3.1	1710.22	0.93	1710.34	0.86	1711.35	1.0	1716.66	0.98	1713.51	1.1	1714.33	1.1	1715.24	0.28	1713.86
07/24/22	3.1	1710.33	0.94	1709.69	0.86	1710.73	0.97	1716.25	1.0	1713.30	0.96	1714.09	1.1	1715.11	0.10	1714.29
07/25/22	3.1	1710.38	0.92	1710.08	0.85	1710.71	0.98	1716.41	1.0	1715.91	1.0	1716.43	1.1	1715.81	0.24	1716.48
07/26/22	3.0	1710.51	0.92	1710.34	0.81	1710.97	1.0	1716.54	1.1	1715.77	1.0	1716.32	1.1	1715.85	0.17	1716.13
07/27/22	3.2	1710.27	0.91	1710.59	0.88	1710.67	0.90	1716.26	0.94	1715.59	1.0	1716.31	1.0	1715.72	0.19	1718.36
07/28/22	3.2	1709.99	0.88	1710.00	0.88	1710.82	0.93	1717.19	1.0	1716.09	1.0	1717.13	1.0	1716.40	0.19	1715.36
07/29/22	3.1	1710.51	0.86	1710.31	0.88	1710.52	0.95	1718.32	1.0	1717.12	1.0	1717.10	1.0	1716.43	0.43	1714.97
07/30/22	3.2	1710.91	0.83	1710.36	0.88	1710.72	1.3	1715.17	0.99	1717.10	1.0	1717.24	1.0	1716.01	0.40	1715.41
07/31/22	3.1	1711.45	0.89	1710.66	0.87	1710.68	1.3	1715.22	0.97	1717.37	0.95	1717.12	0.99	1715.81	0.39	1715.61
Monthly Average	3.1	1710.67	0.93	1710.19	0.84	1711.43	1.0	1716.26	1.0	1715.79	1.1	1716.08	1.1	1716.25	0.26	1714.10
Analytical <sup>1</sup>	Conc (mg/L)	Date	Conc (mg/L)	Date	Conc (mg/L)	Date	Conc (mg/L)	Date	Conc (mg/L)	Date	Conc (mg/L)	Date	Conc (mg/L)	Date	Conc (mg/L)	Date
Perchlorate	520	7/11/2022	835	7/11/2022	350	7/11/2022	85	7/11/2022	400	7/11/2022	760	7/11/2022	1,000	7/11/2022	1,000	7/11/2022
Hexavalent Chromium	0.085	7/11/2022	0.53	7/11/2022	0.63	7/11/2022	0.030	7/11/2022	0.029	7/11/2022	0.092	7/11/2022	0.085	7/11/2022	0.22	7/11/2022
Total Chromium	0.089	7/11/2022	0.54	7/11/2022	0.66	7/11/2022	0.032	7/11/2022	0.029	7/11/2022	0.13	7/11/2022	0.087	7/11/2022	0.23	7/11/2022

Notes:  
 Flow reported as gpm is a daily average calculated from the totalizer reading.  
 The flow rate at individual wells is adjusted daily to maintain the water level in the wells above the pump.  
 1: Analytical results are reported from Eurofins TestAmerica.  
 2: Duplicates taken on 07/11 for well E1-2; average of both values is presented and used for calculations.  
 3: From 07/27 and 07/28, E2-5 flow meter faulted. Averaged values are presented for this period.

Figure 1 - GW-11 Pond Volume and FBR Influent Perchlorate Concentration



**DRAFT**

Figure Updated: 8/16/2022

Figure 2 - FBR Equivalent Loading Calculation

