

Table 1 - Seep Well Field (SWF) Operational Metrics

Nevada Environmental Response Trust Groundwater Extraction and Treatment System Enhanced Operational Metrics																			
Date	LS #1 Flow (gpm)	PC-116R (East Well)		PC-99R2/R3 (Center Well)		PC-115R (West Well)		PC-117		PC-118		PC-119		PC-120		PC-121		PC-133	
		Flow (gpm)	Water Elevation (ft amsl)	Flow (gpm)	Water Elevation (ft amsl)	Flow (gpm)	Water Elevation (ft amsl)	Flow ⁵ (gpm)	Water Elevation (ft amsl)	Flow ⁶ (gpm)	Water Elevation (ft amsl)	Flow (gpm)	Water Elevation (ft amsl)	Flow (gpm)	Water Elevation (ft amsl)	Flow (gpm)	Water Elevation (ft amsl)	Flow (gpm)	Water Elevation ² (ft amsl)
12/01/21 ¹	467	161	1536.23	94	1539.75	130	1542.30	106	1533.54	68	1546.48	102	1548.20	50	1549.24	20	1550.40	10	< 1520.00
12/02/21 ¹	468	161	1536.22	94	1539.75	130	1542.30	106	1533.54	68	1546.48	102	1548.20	50	1549.24	20	1550.40	10	< 1520.00
12/03/21 ¹	468	161	1536.22	94	1539.74	130	1542.30	106	1533.54	68	1546.48	102	1548.20	50	1549.24	20	1550.40	10	< 1520.00
12/04/21	470	161	1536.16	94	1539.65	130	1542.30	106	1533.47	68	1546.46	102	1548.17	50	1549.21	20	1550.36	10	< 1520.00
12/05/21	473	161	1536.17	94	1539.63	130	1542.31	106	1533.48	68	1546.47	102	1548.18	50	1549.22	20	1550.38	10	< 1520.00
12/06/21	469	161	1536.24	94	1539.63	130	1542.39	106	1533.53	68	1546.54	102	1548.27	50	1549.31	20	1550.46	10	< 1520.00
12/07/21	469	161	1536.32	94	1539.64	130	1542.45	106	1533.57	68	1546.61	102	1548.34	50	1549.38	20	1550.54	10	< 1520.00
12/08/21	472	161	1536.41	95	1539.65	130	1542.54	106	1533.63	68	1546.69	102	1548.44	50	1549.48	20	1550.64	10	< 1520.00
12/09/21	471	161	1536.52	95	1539.65	130	1542.64	106	1533.70	68	1546.77	102	1548.54	50	1549.59	20	1550.74	10	< 1520.00
12/10/21	470	161	1536.62	95	1539.71	130	1542.72	106	1533.76	68	1546.85	102	1548.63	50	1549.68	20	1550.84	10	< 1520.00
12/11/21	468	161	1536.74	95	1539.74	131	1542.82	106	1533.84	68	1546.94	102	1548.74	50	1549.79	20	1550.96	10	< 1520.00
12/12/21	469	161	1536.87	95	1539.75	131	1542.94	106	1533.93	68	1547.04	102	1548.87	50	1549.92	20	1551.08	10	< 1520.00
12/13/21	472	161	1536.99	95	1539.77	131	1543.05	106	1534.01	68	1547.14	102	1548.99	50	1550.04	20	1551.21	10	< 1520.00
12/14/21 ⁴	468	159	1537.35	95	1539.87	129	1543.28	105	1534.35	67	1547.33	101	1549.19	50	1550.24	20	1551.39	10.0	< 1520.00
12/15/21	467	161	1537.43	96	1539.88	131	1543.32	106	1534.36	68	1547.38	102	1549.25	50	1550.31	20	1551.48	10	< 1520.00
12/16/21	468	161	1537.54	96	1539.91	131	1543.45	106	1534.45	68	1547.49	102	1549.39	50	1550.45	20	1551.63	10	< 1520.00
12/17/21	471	161	1537.66	96	1539.96	131	1543.57	106	1534.54	68	1547.61	103	1549.52	50	1550.59	20	1551.76	10	< 1520.00
12/18/21	470	161	1537.78	97	1540.01	131	1543.69	106	1534.64	68	1547.71	103	1549.65	50	1550.72	20	1551.90	10	< 1520.00
12/19/21	471	161	1537.91	97	1540.05	131	1543.82	106	1534.73	69	1547.82	103	1549.78	50	1550.85	20	1552.03	10	< 1520.00
12/20/21	473	161	1538.02	97	1540.09	131	1543.93	106	1534.82	69	1547.92	103	1549.89	50	1550.96	20	1552.14	10	< 1520.00
12/21/21	477	161	1538.16	97	1540.12	131	1544.03	106	1534.93	69	1548.01	103	1550.00	50	1551.07	20	1552.25	10	< 1520.00
12/22/21	478	161	1538.31	97	1540.14	132	1544.13	106	1535.07	69	1548.09	103	1550.09	50	1551.16	20	1552.34	10	< 1520.00
12/23/21	478	161	1538.37	97	1540.17	132	1544.21	106	1535.12	69	1548.16	103	1550.17	51	1551.24	20	1552.43	10	< 1520.00
12/24/21	479	161	1538.41	97	1540.19	132	1544.26	107	1535.16	69	1548.22	103	1550.23	51	1551.30	20	1552.49	10	< 1520.00
12/25/21	479	161	1538.45	97	1540.24	132	1544.30	107	1535.19	69	1548.25	103	1550.27	51	1551.34	20	1552.53	10	< 1520.00
12/26/21	476	161	1538.54	97	1540.18	132	1544.34	106	1535.23	69	1548.29	103	1550.31	51	1551.37	20	1552.56	10	< 1520.00
12/27/21	476	161	1538.56	97	1540.19	132	1544.37	106	1535.25	69	1548.32	103	1550.34	51	1551.40	21	1552.59	10.2	< 1520.00
12/28/21	480	161	1538.56	97	1540.22	132	1544.39	106	1535.27	69	1548.34	103	1550.36	51	1551.42	21	1552.61	10	< 1520.00
12/29/21	469	161	1538.61	97	1540.26	132	1544.41	98	1536.20	69	1548.36	103	1550.38	51	1551.44	21	1552.62	10	< 1520.00
12/30/21	480	161	1538.58	97	1540.29	132	1544.41	106	1535.43	69	1548.37	103	1550.38	51	1551.44	21	1552.63	10.2	< 1520.00
12/31/21	500	161	1538.58	97	1540.30	132	1544.42	106	1535.42	70	1548.35	103	1550.39	51	1551.45	21	1552.64	10.2	< 1520.00
Monthly Average	473	161	1537.44	96	1539.94	131	1543.40	106	1534.44	68	1547.45	102	1549.33	50	1550.39	20	1551.56	10.1	< 1520.00
Analytical	Conc (mg/L)	Date	Conc (mg/L)	Date	Conc (mg/L)	Date	Conc (mg/L)	Date	Conc (mg/L)	Date	Conc (mg/L)	Date	Conc (mg/L)	Date	Conc (mg/L)	Date	Conc (mg/L)	Date	
Perchlorate	13.0	12/15/2021	10.0	12/15/2021	3.1	12/15/2021	9.6	12/15/2021	1.3	12/15/2021	0.17	12/15/2021	0.0036	12/15/2021	ND	12/15/2021	0.50	12/15/2021	
Hexavalent Chromium	0.0029	12/15/2021	ND	12/15/2021	ND	12/15/2021	0.0042	12/15/2021	ND	12/15/2021	ND	12/15/2021	ND	12/15/2021	ND	12/15/2021	ND	12/15/2021	
Total Chromium	ND	12/15/2021	ND	12/15/2021	ND	12/15/2021	0.0033	12/15/2021	ND	12/15/2021	ND	12/15/2021	ND	12/15/2021	ND	12/15/2021	ND	12/15/2021	

Notes:
 Flow reported as gpm is a daily average calculated from the totalizer reading.
 ND = Not detected above laboratory method detection limit (Cr(TR)=2.5 ug/L, Cr(VI) =0.20 ug/L).
 J = Result is less than the reporting limit but greater than or equal to the method detection limit and the concentration is an approximate value.
 1: Analytical results are reported from Eurofins TestAmerica.
 2: A "<" preceding the water elevation indicates the reported water level is below the transducer. Average monthly water elevation calculations include the transducer elevation in instances where the water level is below the transducer.
 3: From 12/01 to 12/03, the data server was offline; average flows and water levels are presented for these days.
 4: On 12/14, AWF wells were offline briefly due to maintenance.
 5: On 12/29, PC-117 offline briefly due to maintenance.
 6: On 12/31, PC-118 flow sent to LS-1.
 7: Duplicates taken on 12/15 for well PC-120; average of both values is presented and used for calculations.

Nevada Environmental Response Trust Groundwater Extraction and Treatment System Enhanced Operational Metrics																				
Date	LS #3 Flow (gpm)	ART-1/1A		ART-2/2A		ART-3/3A		ART-4/4A		ART-9		ART-7A/7B		ART-8/8A		PC-150				
		Flow ^{4,5} (gpm)	Water Elevation (ft amsl)	Flow ⁶ (gpm)	Water Elevation (ft amsl)	Flow ⁷ (gpm)	Water Elevation (ft amsl)	Flow (gpm)	Water Elevation (ft amsl)	Flow (gpm)	Water Elevation (ft amsl)	Flow (gpm)	Water Elevation (ft amsl)	Flow (gpm)	Water Elevation (ft amsl)	Flow ⁸ (gpm)	Water Elevation (ft amsl)			
12/01/21 ²	327	42	1586.12	140	1586.89	27	1584.72	4.9	1578.84	57	1579.32	19	1584.72	81	1582.45	1.5	1579.47			
12/02/21 ²	327	42	1586.13	140	1586.90	27	1584.73	4.9	1578.84	57	1579.32	19	1584.72	81	1582.46	1.5	1579.47			
12/03/21 ²	327	42	1586.14	140	1586.91	27	1584.74	4.9	1578.84	57	1579.32	19	1584.72	81	1582.47	1.5	1579.47			
12/04/21	407	42	1585.55	140	1585.56	25	1583.99	4.7	1578.84	57	1579.32	19	1584.73	173	1584.73	1.5	1579.41			
12/05/21	407	42	1585.46	140	1585.44	25	1583.90	4.5	1578.83	57	1579.31	18	1584.72	173	1584.64	1.5	1579.38			
12/06/21	405	42	1585.28	140	1585.24	25	1583.74	4.5	1578.84	57	1579.32	19	1584.73	173	1584.48	1.5	1579.32			
12/07/21	405	42	1585.19	140	1585.13	25	1583.66	4.5	1578.84	57	1579.32	19	1584.73	173	1584.39	1.5	1579.29			
12/08/21	404	42	1585.12	140	1585.05	24	1583.59	4.5	1578.84	57	1579.32	19	1584.73	172	1584.33	1.5	1579.26			
12/09/21	404	42	1585.07	140	1584.99	24	1583.54	4.4	1578.83	57	1579.32	19	1584.72	173	1584.28	1.5	1579.24			
12/10/21	404	42	1585.00	138	1584.91	24	1583.49	4.4	1578.83	57	1579.32	19	1584.72	173	1584.22	1.5	1579.22			
12/11/21	402	39	1583.25	139	1584.91	24	1583.47	4.3	1578.83	58	1579.31	19	1584.72	173	1584.22	1.5	1579.20			
12/12/21	404	42	1584.93	139	1584.89	24	1583.46	4.3	1578.83	58	1579.31	19	1584.72	173	1584.20	1.5	1579.19			
12/13/21	401	42	1584.99	139	1584.98	24	1583.48	4.3	1578.83	58	1579.31	19	1584.72	173	1584.24	1.5	1579.18			
12/14/21	406	42	1584.89	144	1584.90	24	1583.46	4.3	1578.83	59	1579.32	19	1584.72	173	1584.21	1.5	1579.19			
12/15/21	406	42	1584.95	144	1584.88	24	1583.44	4.3	1578.83	59	1579.31	19	1584.72	173	1584.20	1.5	1579.17			
12/16/21	406	42	1584.99	144	1584.92	24	1583.46	4.3	1578.83	59	1579.31	19	1584.72	173	1584.23	1.5	1579.18			
12/17/21 ¹	348	39	1585.35	125	1585.63	20	1579.81	3.9	1581.92	56	1578.78	19	1584.67	152	1584.86	1.5	1580.36			
12/18/21	399	42	1585.32	144	1585.36	17	< 1575.00	4.5	1583.95	61	1578.06	20	1584.51	173	1584.65	1.5	1579.32			
12/19/21	402	42	1585.32	144	1585.34	19	1577.19	4.5	1582.70	61	1577.98	20	1584.53	173	1584.62	1.5	1579.33			
12/20/21	411	42	1585.28	144	1585.26	25	1583.71	4.4	1578.83	62	1577.80	20	1584.57	173	1584.49	1.5	1579.31			
12/21/21	411	42	1585.28	144	1585.26	25	1583.69	4.4	1578.83	62	1577.61	20	1584.61	173	1584.48	1.5	1579.30			
12/22/21	411	42	1585.29	144	1585.27	25	1583.70	4.4	1578.83	63	1577.44	20	1584.64	173	1584.50	1.5	1579.30			
12/23/21	411	42	1585.33	144	1585.32	25	1583.73	4.4	1578.84	63	1577.21	20	1584.67	173	1584.53	1.5	1579.31			
12/24/21	412	42	1585.34	144	1585.34	25	1583.74	4.4	1578.84	64	1577.23	20	1584.71	173	1584.54	1.5	1579.31			
12/25/21	412	42	1585.34	144	1585.34	25	1583.75	4.4	1578.84	64	1576.88	20	1584.73	173	1584.55	1.5	1579.30			
12/26/21	408	42	1585.39	141	1585.44	25	1583.73	4.4	1578.95	65	1576.64	20	1584.75	170	1584.62	1.5	1579.38			
12/27/21	413	42	1585.39	144	1585.40	25	1583.78	4.5	1578.83	66	1576.42	20	1584.77	173	1584.60	1.5	1579.32			
12/28/21 ¹	395	40	1585.51	137	1585.65	24	1583.99	4.3	1579.10	64	1576.87	19	1584.82	164	1584.81	1.5	1579.69			
12/29/21	414	42	1585.43	144	1585.46	25	1583.83	4.4	1578.83	67	1576.44	20	1584.80	173	1584.65	1.5	1579.34			
12/30/21	414	42	1585.42	144	1585.45	25	1583.82	4.4	1578.84	67	1576.42	20	1584.81	172	1584.64	1.5	1579.34			
12/31/21	414	42	1585.43	144	1585.46	25	1583.83	4.4	1578.84	67	1576.43	20	1584.82	172	1584.64	1.5	1579.34			
Monthly Average	397	42	1585.27	141	1585.40	24	1583.17	4.4	1579.24	60	1578.30	19	1584.71	163	1584.29	1.5	1579.35			
Analytical ¹	Conc (mg/L)		Date		Conc (mg/L)		Date		Conc (mg/L)		Date		Conc (mg/L)		Date		Conc (mg/L)		Date	
Perchlorate	22	12/15/2021	8.1	12/15/2021	150	12/15/2021	93	12/15/2021	150	12/15/2021	75	12/15/2021	61	12/15/2021	47	12/15/2021				
Hexavalent Chromium	ND	12/15/2021	0.0030	12/15/2021	0.26	12/15/2021	0.11	12/15/2021	0.55	12/15/2021	0.41	12/15/2021	0.060	12/15/2021	0.045	12/15/2021				
Total Chromium	ND	12/15/2021	ND	12/15/2021	0.27	12/15/2021	0.11	12/15/2021	0.60	12/15/2021	0.42	12/15/2021	0.059	12/15/2021	0.045	12/15/2021				

Notes:
 Flow reported as gpm is a daily average calculated from the totalizer reading.
 ND = Not detected above laboratory method detection limit (ClO₂ = 0.5 ug/L; ClO₃ = 10 ug/L; NO₂-N = 0.055 mg/L, Cr(VI) = 0.25 ug/L).
 ART-1, 2, 3, 4, 7B, and 8 have adjacent recovery wells, both of which can be used for extraction. The pumping well can be chosen manually or automatically, based on operational considerations. The wells with transducers are ART-1, -2, -3, -4, -7A, -8, -9, and PC-150
 1: Analytical results are reported from Eurofins TestAmerica.
 2: From 12/01 to 12/03, the data server was offline; average flows and water levels are presented for these days.
 3: On 12/17 and 12/28, LS3 and AWF wells were offline intermittently due to maintenance.
 4: On 12/11, ART1A switched to ART1 briefly.
 5: On 12/14, ART1A flow meter failed; averaged flows are presented for this day.
 6: From 12/11 to 12/13, ART2/2A flow meter failed; average flows are presented for these days.
 7: From 12/17 to 12/19, ART3A switched to ART3
 8: Conducted periodic bucket tests to confirm flow rates for PC-150. Average flow of 1.5 gpm determined from flow tests is presented for 12/01 - 12/31 flows and used for calculation purposes. Flow was steady throughout the month but the totalizer showed zero flow because totalizer units are 1,000 gallons.
 9: Duplicates taken on 12/15 for well PC-150; average of both values is presented and used for calculations.

Nevada Environmental Response Trust Groundwater Extraction and Treatment System Enhanced Operational Metrics																				
Date	I-AR		I-AA		I-AB		I-AC		I-AD		I-B		I-C		I-D		I-E		I-F	
	Flow (gpm)	Water Elevation (ft amsl)	Flow ⁴ (gpm)	Water Elevation (ft amsl)	Flow (gpm)	Water Elevation (ft amsl)	Flow (gpm)	Water Elevation (ft amsl)	Flow (gpm)	Water Elevation (ft amsl)	Flow (gpm)	Water Elevation (ft amsl)	Flow (gpm)	Water Elevation (ft amsl)	Flow ⁵ (gpm)	Water Elevation (ft amsl)	Flow ⁵ (gpm)	Water Elevation (ft amsl)	Flow (gpm)	Water Elevation (ft amsl)
12/01/21 ²	0.08	1723.36	0.97	1707.68	0.00	1719.63	0.00	1725.30	0.6	1722.85	0.57	1709.81	3.7	1708.90	1.0	1721.39	0.79	1718.51	4.3	1719.85
12/02/21 ²	0.08	1723.35	0.97	1707.69	0.00	1719.63	0.00	1725.30	0.6	1722.89	0.57	1709.80	3.7	1708.91	0.98	1721.40	0.80	1718.50	4.3	1719.85
12/03/21 ²	0.08	1723.34	0.97	1707.67	0.00	1719.63	0.00	1725.30	0.6	1722.89	0.57	1709.74	3.7	1708.84	0.98	1721.41	0.80	1718.48	4.3	1719.85
12/04/21	0.06	1723.76	0.97	1707.58	0.00	1719.59	0.00	1725.25	0.6	1722.82	0.57	1709.61	3.7	1708.80	0.97	1721.37	0.8	1718.42	4.3	1719.77
12/05/21	0.07	1723.67	0.97	1707.58	0.00	1719.59	0.00	1725.28	0.6	1722.81	0.56	1709.63	3.7	1708.79	0.97	1721.36	0.79	1718.46	4.3	1719.76
12/06/21	0.06	1723.86	0.94	1708.37	0.00	1719.59	0.00	1725.26	0.6	1722.77	0.57	1709.62	3.7	1708.80	0.97	1721.36	0.79	1718.47	4.3	1719.75
12/07/21 ³	0.06	1723.90	0.72	1712.07	0.00	1719.65	0.00	1725.23	0.6	1723.12	0.56	1709.74	3.7	1709.60	0.96	1721.35	0.77	1718.54	4.2	1719.77
12/08/21 ⁴	0.07	1723.66	0.64	1712.09	0.02	1719.29	0.00	1725.22	0.6	1723.21	0.56	1709.67	3.7	1709.72	0.99	1721.34	0.78	1718.53	4.3	1719.75
12/09/21 ⁴	0.08	1723.42	0.98	1707.83	0.00	1719.66	0.00	1725.27	0.6	1723.13	0.55	1709.88	3.8	1710.61	0.98	1721.35	0.75	1718.64	4.2	1719.78
12/10/21	0.09	1723.21	0.98	1707.67	0.00	1719.63	0.00	1725.24	0.6	1722.65	0.55	1709.79	3.7	1710.24	1.0	1721.32	0.76	1718.60	4.3	1719.73
12/11/21	0.07	1723.45	0.98	1707.71	0.00	1719.62	0.00	1725.26	0.6	1722.65	0.55	1709.78	3.7	1710.40	1.0	1721.31	0.75	1718.62	4.3	1719.72
12/12/21	0.07	1723.72	0.98	1707.66	0.00	1719.62	0.00	1725.28	0.6	1722.63	0.55	1709.80	3.8	1710.58	1.0	1721.31	0.75	1718.62	4.3	1719.72
12/13/21	0.06	1723.81	0.98	1707.66	0.00	1719.60	0.00	1725.28	0.6	1722.60	0.55	1709.78	3.8	1710.76	1.0	1721.30	0.75	1718.62	4.3	1719.71
12/14/21	0.09	1723.87	0.98	1707.65	0.00	1719.60	0.00	1725.34	0.6	1722.69	0.55	1709.77	3.8	1710.97	1.0	1721.30	0.75	1718.62	4.3	1719.70
12/15/21	0.10	1722.71	0.98	1707.65	0.00	1719.57	0.00	1725.27	0.6	1722.68	0.54	1709.77	3.8	1711.04	1.0	1721.27	0.75	1718.58	4.3	1719.66
12/16/21	0.08	1723.42	0.97	1707.65	0.00	1719.56	0.01	1724.92	0.6	1722.68	0.54	1709.77	3.8	1711.01	1.0	1721.25	0.74	1718.58	4.3	1719.65
12/17/21	0.08	1723.54	0.96	1707.88	0.00	1719.54	0.00	1725.55	0.60	1722.75	0.54	1709.77	3.8	1710.98	1.0	1721.23	0.75	1718.54	4.3	1719.62
12/18/21	0.07	1723.21	0.98	1707.65	0.00	1719.54	0.00	1725.52	0.61	1722.68	0.54	1709.77	3.8	1710.92	1.0	1721.22	0.75	1718.52	4.3	1719.61
12/19/21	0.09	1723.05	0.96	1707.87	0.00	1719.51	0.00	1725.50	0.59	1722.78	0.53	1709.75	3.8	1710.89	1.2	1721.15	0.92	1717.44	4.3	1719.59
12/20/21	0.09	1723.00	0.96	1707.95	0.00	1719.40	0.00	1725.46	0.54	1723.15	0.49	1709.79	3.8	1710.78	1.5	1720.88	1.1	1716.03	4.3	1719.56
12/21/21	0.18	1720.41	0.96	1707.75	0.00	1719.36	0.00	1725.45	0.55	1723.07	0.49	1709.72	3.9	1710.56	1.5	1720.52	1.1	1716.09	4.3	1719.53
12/22/21	0.19	1718.74	0.96	1707.65	0.00	1719.34	0.00	1725.46	0.54	1723.11	0.49	1709.61	3.9	1710.31	1.5	1720.24	1.1	1716.10	4.3	1719.50
12/23/21	0.19	1718.63	0.96	1707.65	0.00	1719.34	0.00	1725.44	0.54	1723.14	0.49	1709.65	3.9	1710.07	1.5	1719.95	1.1	1716.07	4.3	1719.46
12/24/21	0.18	1718.92	0.96	1707.69	0.00	1719.34	0.00	1725.44	0.53	1723.15	0.49	1709.65	3.9	1709.89	1.5	1719.66	1.1	1716.06	4.3	1719.41
12/25/21	0.18	1719.15	0.96	1707.69	0.00	1719.33	0.00	1725.44	0.53	1723.16	0.49	1709.65	3.9	1709.72	1.5	1719.44	1.1	1716.02	4.3	1719.35
12/26/21	0.18	1719.18	0.96	1707.65	0.00	1719.32	0.00	1725.46	0.52	1723.18	0.49	1709.67	3.9	1709.57	1.5	1719.16	1.0	1716.01	4.3	1719.29
12/27/21	0.18	1719.21	0.96	1707.69	0.00	1719.32	0.00	1725.49	0.52	1723.20	0.49	1709.67	3.9	1709.44	1.5	1718.85	0.99	1716.33	4.3	1719.23
12/28/21	0.18	1719.22	0.96	1707.65	0.00	1719.30	0.00	1725.52	0.52	1723.21	0.49	1709.66	3.9	1709.26	1.5	1718.57	0.98	1716.30	4.3	1719.17
12/29/21	0.18	1719.26	0.96	1707.65	0.00	1719.29	0.00	1725.47	0.52	1723.16	0.48	1709.65	3.9	1709.09	1.5	1718.23	0.97	1716.26	4.3	1719.10
12/30/21	0.17	1719.26	0.96	1707.65	0.00	1719.28	0.00	1725.43	0.52	1723.14	0.48	1709.65	3.9	1708.85	1.5	1717.93	0.98	1716.17	4.3	1719.05
12/31/21	0.17	1719.27	0.96	1707.65	0.00	1719.28	0.00	1725.44	0.53	1723.13	0.48	1709.65	3.9	1708.94	1.5	1717.69	0.98	1716.09	4.3	1718.99
Monthly Average	0.11	1721.95	0.95	1708.00	0.00	1719.48	0.00	1725.36	0.58	1722.94	0.53	1709.72	3.8	1709.91	1.2	1720.52	0.87	1717.58	4.3	1719.56
Analytical ¹	Conc (mg/L)	Date	Conc (mg/L)	Date	Conc (mg/L)	Date	Conc (mg/L)	Date	Conc (mg/L)	Date	Conc (mg/L)	Date	Conc (mg/L)	Date	Conc (mg/L)	Date	Conc (mg/L)	Date	Conc (mg/L)	Date
Perchlorate	350	12/8/2021	29	12/8/2021	100	12/8/2021	190	12/16/2021	200	12/16/2021	310	12/8/2021	410	12/8/2021	475	12/8/2021	350	12/8/2021	480	12/8/2021
Hexavalent Chromium	0.35	12/8/2021	0.046	12/8/2021	0.0030	12/8/2021	1.7	12/16/2021	1.8	12/16/2021	0.24	12/8/2021	2.4	12/8/2021	3.45	12/8/2021	4.6	12/8/2021	12	12/8/2021
Total Chromium	1.2	12/8/2021	0.057	12/8/2021	0.0082	12/8/2021	1.9	12/16/2021	1.8	12/16/2021	0.28	12/8/2021	2.7	12/8/2021	4.1	12/8/2021	5.5	12/8/2021	11	12/8/2021

Notes:
 Flow reported as gpm is a daily average calculated from the totalizer reading.
 1: Analytical results are reported from Eurofins TestAmerica.
 2: From 12/01 to 12/03, the data server was offline; average flows and water levels are presented for these days.
 3: On 12/7 and 12/9, IWF wells were offline intermittently due to maintenance.
 4: From 12/06 to 12/08, I-AA offline intermittently due to maintenance.
 5: On 12/19, I-D, I-E, I-H, I-L, I-M, I-R, I-T, and I-U adjusted to meet flow targets as directed by the Trust.
 6: Duplicates taken on 12/08 for well I-D; average of both values is presented and used for calculations.

Nevada Environmental Response Trust Groundwater Extraction and Treatment System Enhanced Operational Metrics																						
Date	I-G		I-H		I-I		I-J		I-K		I-L		I-M		I-N		I-O		I-P			
	Flow (gpm)	Water Elevation (ft amsl)	Flow ⁵ (gpm)	Water Elevation (ft amsl)	Flow (gpm)	Water Elevation (ft amsl)	Flow (gpm)	Water Elevation (ft amsl)	Flow (gpm)	Water Elevation (ft amsl)	Flow ⁵ (gpm)	Water Elevation (ft amsl)	Flow ⁵ (gpm)	Water Elevation (ft amsl)	Flow (gpm)	Water Elevation (ft amsl)	Flow (gpm)	Water Elevation (ft amsl)	Flow (gpm)	Water Elevation (ft amsl)		
12/01/21 ²	0.36	1721.91	0.6	1722.67	4.3	1723.10	6.2	1722.95	0.99	1720.95	0.25	1721.78	1.7	1721.20	3.6	1719.02	0.55	1723.13	1.7	1723.14		
12/02/21 ²	0.35	1721.93	0.60	1722.68	4.3	1723.10	6.2	1722.97	0.98	1720.95	0.25	1721.78	1.7	1721.21	3.6	1719.03	0.55	1723.13	1.7	1723.14		
12/03/21 ²	0.35	1721.94	0.60	1722.68	4.3	1723.10	6.3	1722.94	0.98	1720.96	0.26	1721.77	1.7	1721.21	3.6	1719.03	0.55	1723.13	1.7	1723.14		
12/04/21	0.33	1721.94	0.59	1722.67	4.3	1723.05	6.3	1722.80	0.97	1720.93	0.30	1721.67	1.7	1721.12	3.5	1718.97	0.54	1723.11	1.7	1723.12		
12/05/21	0.33	1721.94	0.59	1722.66	4.3	1723.05	6.3	1722.79	0.97	1720.93	0.30	1721.66	1.7	1721.10	3.5	1718.96	0.54	1723.10	1.7	1723.12		
12/06/21	0.33	1721.95	0.59	1722.57	4.3	1723.02	6.3	1722.81	0.96	1720.95	0.30	1721.65	1.7	1721.08	3.5	1718.96	0.54	1722.97	1.7	1722.94		
12/07/21 ³	0.29	1722.01	0.6	1722.63	4.3	1723.04	6.2	1722.95	0.93	1720.97	0.29	1721.69	1.7	1721.09	3.4	1718.99	0.53	1723.04	1.6	1723.06		
12/08/21	0.27	1722.05	0.58	1722.62	4.3	1723.03	6.2	1722.87	0.94	1720.97	0.30	1721.71	1.8	1721.05	3.5	1718.97	0.53	1723.04	1.6	1723.07		
12/09/21 ⁴	0.24	1722.13	0.57	1722.66	4.2	1723.07	6.1	1723.06	0.96	1720.97	0.29	1721.73	1.7	1721.08	3.3	1719.06	0.51	1723.07	1.6	1723.06		
12/10/21	0.23	1722.11	0.58	1722.60	4.3	1723.00	6.3	1722.65	1.00	1720.88	0.30	1721.70	1.7	1721.02	3.4	1719.01	0.51	1723.03	1.7	1723.05		
12/11/21	0.23	1722.12	0.58	1722.60	4.3	1722.98	6.3	1722.59	1.0	1720.86	0.30	1721.69	1.7	1721.00	3.4	1718.97	0.50	1723.02	1.7	1723.04		
12/12/21	0.22	1722.16	0.58	1722.61	4.3	1722.99	6.3	1722.63	1.00	1722.87	0.31	1721.68	1.7	1720.99	3.4	1718.97	0.50	1723.03	1.6	1723.05		
12/13/21	0.22	1722.16	0.68	1722.44	4.3	1722.99	6.3	1722.59	0.99	1720.87	0.31	1721.68	1.7	1720.98	3.4	1718.96	0.50	1723.03	1.7	1723.04		
12/14/21	0.22	1722.16	0.77	1722.28	4.3	1723.01	6.3	1722.69	0.99	1720.89	0.31	1721.59	1.7	1720.98	3.4	1718.95	0.52	1723.02	1.7	1723.02		
12/15/21	0.22	1722.10	0.75	1722.25	4.3	1722.95	6.3	1722.42	0.99	1720.84	0.31	1721.49	1.7	1720.94	3.4	1718.91	0.52	1722.97	1.7	1722.91		
12/16/21	0.22	1722.10	0.75	1722.25	4.3	1722.95	6.3	1722.45	0.97	1720.84	0.31	1721.45	1.7	1720.93	3.4	1718.90	0.51	1722.96	1.7	1722.97		
12/17/21	0.22	1722.08	0.74	1722.25	4.3	1722.93	6.3	1722.37	0.95	1720.82	0.31	1721.42	1.7	1720.91	3.4	1718.88	0.51	1722.94	1.7	1722.95		
12/18/21	0.22	1722.07	0.73	1722.25	4.3	1722.92	6.3	1722.37	0.94	1720.83	0.31	1721.41	1.7	1720.89	3.4	1718.87	0.51	1722.93	1.7	1722.94		
12/19/21	0.22	1722.07	0.89	1721.91	4.3	1722.92	6.3	1722.39	0.94	1720.83	0.73	1719.12	1.9	1720.66	3.4	1718.84	0.51	1722.92	1.7	1722.93		
12/20/21	0.22	1722.03	1.1	1721.42	4.3	1722.90	6.3	1722.37	0.93	1720.83	1.2	1716.00	2.1	1720.26	3.4	1718.79	0.51	1722.89	1.7	1722.88		
12/21/21	0.22	1721.99	1.1	1721.41	4.3	1722.89	6.3	1722.38	0.92	1720.86	1.1	1715.97	2.1	1720.13	3.4	1718.75	0.52	1722.87	1.6	1722.86		
12/22/21	0.22	1721.97	1.1	1721.42	4.3	1722.88	6.3	1722.42	0.91	1720.87	1.1	1716.10	2.1	1720.01	3.4	1718.70	0.52	1722.85	1.6	1722.85		
12/23/21	0.22	1721.96	1.0	1721.44	4.3	1722.89	6.2	1722.56	0.91	1720.89	1.1	1716.46	2.1	1719.88	3.5	1718.65	0.52	1722.85	1.6	1722.85		
12/24/21	0.22	1721.93	1.0	1721.43	4.3	1722.88	6.2	1722.56	0.91	1720.90	1.0	1716.71	2.1	1719.78	3.5	1718.60	0.52	1722.84	1.6	1722.83		
12/25/21	0.22	1721.90	1.0	1721.42	4.3	1722.86	6.2	1722.44	0.91	1720.87	1.0	1716.67	2.1	1719.66	3.5	1718.55	0.52	1722.82	1.6	1722.81		
12/26/21	0.22	1721.88	1.0	1721.43	4.3	1722.84	6.2	1722.39	0.92	1720.85	1.0	1716.55	2.1	1719.55	3.5	1718.50	0.52	1722.80	1.6	1722.80		
12/27/21	0.22	1721.87	1.0	1721.45	4.3	1722.84	6.2	1722.38	0.91	1720.86	1.0	1716.46	2.1	1719.47	3.5	1718.45	0.51	1722.79	1.6	1722.79		
12/28/21	0.21	1721.84	0.99	1721.46	4.3	1722.83	6.2	1722.38	0.91	1720.85	1.0	1716.43	2.1	1719.37	3.5	1718.40	0.51	1722.78	1.6	1722.78		
12/29/21	0.21	1721.82	0.99	1721.45	4.3	1722.81	6.2	1722.28	0.91	1720.83	0.99	1716.42	2.1	1719.28	3.5	1718.34	0.51	1722.76	1.6	1722.77		
12/30/21	0.21	1721.80	1.0	1721.40	4.3	1722.80	6.2	1722.27	0.91	1720.83	0.98	1716.42	2.1	1719.21	3.5	1718.29	0.51	1722.75	1.6	1722.76		
12/31/21	0.21	1721.79	0.99	1721.42	4.3	1722.81	6.2	1722.35	0.91	1720.85	0.97	1716.50	2.1	1719.14	3.4	1718.26	0.51	1722.75	1.6	1722.76		
Monthly Average	0.25	1721.99	0.8	1722.08	4.3	1722.95	6.3	1722.58	0.95	1720.88	0.60	1719.53	1.9	1720.49	3.4	1718.79	0.52	1722.95	1.7	1722.95		
Analytical ¹	Conc (mg/L)	Date	Conc (mg/L)	Date	Conc (mg/L)	Date	Conc (mg/L)	Date	Conc (mg/L)	Date	Conc (mg/L)	Date	Conc (mg/L)	Date	Conc (mg/L)	Date	Conc (mg/L)	Date	Conc (mg/L)	Date		
Perchlorate	670	12/13/2021	680	12/13/2021	510	12/16/2021	210	12/16/2021	680	12/16/2021	250	12/16/2021	230	12/8/2021	420	12/8/2021	370	12/8/2021	530	12/13/2021	620	12/13/2021
Hexavalent Chromium	11	12/13/2021	9.6	12/13/2021	5.3	12/16/2021	3.0	12/16/2021	2.2	12/16/2021	0.93	12/8/2021	4.5	12/8/2021	5.6	12/8/2021	6.5	12/13/2021	8.5	12/13/2021		
Total Chromium	14	12/13/2021	11	12/13/2021	6.6	12/16/2021	3.3	12/16/2021	2.5	12/16/2021	1.1	12/8/2021	5.0	12/8/2021	6.4	12/8/2021	8.6	12/13/2021	11	12/13/2021		

Notes:
 Flow reported as gpm is a daily average calculated from the totalizer reading.
 1: Analytical results are reported from Eurofins TestAmerica.
 2: From 12/01 to 12/03, the data server was offline; average flows and water levels are presented for these days.
 3: On 12/7 and 12/9, IWF wells were offline intermittently due to maintenance.
 5: On 12/19, I-D, I-E, I-H, I-L, I-M, I-R, I-T, and I-U adjusted to meet flow targets as directed by the Trust.

Nevada Environmental Response Trust Groundwater Extraction and Treatment System Enhanced Operational Metrics																						
Date	I-Q		I-R		I-S		I-T		I-U		I-V		I-W		I-X		I-Y		I-Z			
	Flow (gpm)	Water Elevation (ft amsl)	Flow ⁵ (gpm)	Water Elevation (ft amsl)	Flow (gpm)	Water Elevation (ft amsl)	Flow ⁵ (gpm)	Water Elevation (ft amsl)	Flow ^{5,7} (gpm)	Water Elevation (ft amsl)	Flow (gpm)	Water Elevation (ft amsl)	Flow ⁸ (gpm)	Water Elevation (ft amsl)	Flow (gpm)	Water Elevation (ft amsl)	Flow (gpm)	Water Elevation (ft amsl)	Flow (gpm)	Water Elevation (ft amsl)		
12/01/21 ²	0.31	1718.41	0.83	1720.49	1.7	1720.75	0.24	1720.75	0.48	1718.78	4.4	1722.35	0.55	1723.56	3.7	1716.17	1.7	1700.10	9.0	1715.07		
12/02/21 ²	0.31	1718.38	0.83	1720.32	1.7	1720.77	0.24	1720.76	0.48	1718.78	4.4	1722.35	0.55	1723.56	3.7	1716.18	1.7	1700.15	9.0	1715.09		
12/03/21 ²	0.32	1718.36	0.83	1720.18	1.7	1720.77	0.24	1720.76	0.48	1718.77	4.4	1722.34	0.56	1723.56	3.7	1716.17	1.7	1700.05	9.0	1715.05		
12/04/21	0.31	1718.31	0.87	1719.88	1.7	1720.75	0.24	1720.74	0.42	1719.41	4.4	1722.28	0.54	1723.54	3.7	1716.01	1.6	1699.86	9.0	1714.70		
12/05/21	0.31	1718.30	0.87	1719.88	1.7	1720.75	0.24	1720.74	0.40	1719.40	4.4	1722.28	0.55	1723.54	3.7	1716.00	1.6	1700.06	9.0	1714.67		
12/06/21	0.30	1718.34	0.87	1719.84	1.7	1720.73	0.24	1720.73	0.41	1719.37	4.4	1722.18	0.60	1716.43	3.7	1715.99	1.6	1700.13	9.0	1714.64		
12/07/21 ³	0.23	1718.70	0.76	1722.71	1.7	1720.77	0.23	1720.77	0.58	1717.35	4.3	1722.24	0.73	1723.36	3.6	1716.08	1.7	1700.10	8.9	1714.89		
12/08/21	0.17	1719.01	0.72	1724.77	1.7	1720.80	0.22	1720.77	0.71	1715.47	4.4	1722.22	0.74	1723.36	3.7	1716.03	1.7	1699.98	9.0	1714.71		
12/09/21 ⁴	0.30	1718.42	0.68	1724.19	1.6	1720.85	0.22	1720.81	0.46	1718.74	4.3	1722.29	0.70	1723.42	3.6	1716.19	1.7	1699.69	8.8	1715.14		
12/10/21	0.28	1718.44	0.69	1723.61	1.6	1720.83	0.23	1720.73	0.40	1719.65	4.4	1722.19	0.73	1723.35	3.7	1716.03	1.7	1699.57	9.0	1714.65		
12/11/21	0.28	1718.45	0.69	1723.63	1.6	1720.83	0.23	1720.73	0.42	1719.54	4.4	1722.16	0.73	1723.34	3.7	1716.00	1.7	1700.23	9.0	1714.55		
12/12/21	0.26	1718.54	0.70	1723.65	1.7	1720.82	0.23	1720.75	0.42	1719.44	4.4	1722.18	0.73	1723.35	3.7	1715.98	1.7	1700.28	9.0	1714.57		
12/13/21	0.34	1718.17	0.72	1723.54	1.7	1720.82	0.23	1720.75	0.47	1718.68	4.4	1722.17	0.74	1723.34	3.7	1715.95	1.7	1700.07	9.0	1714.51		
12/14/21	0.41	1717.72	0.73	1723.47	2.3	1719.83	0.23	1720.74	0.54	1718.01	4.4	1722.18	0.74	1723.33	3.7	1715.94	1.7	1700.13	9.0	1714.58		
12/15/21	0.39	1717.77	0.76	1723.34	2.2	1719.52	0.23	1720.69	0.46	1718.80	4.4	1722.10	0.73	1723.28	3.7	1715.88	1.6	1700.10	9.0	1714.32		
12/16/21	0.38	1717.84	0.79	1723.18	2.2	1719.42	0.23	1720.69	0.45	1718.95	4.4	1722.09	0.73	1723.27	3.7	1715.85	1.6	1700.13	9.0	1714.32		
12/17/21	0.37	1717.85	0.79	1723.13	2.2	1719.21	0.23	1720.68	0.45	1718.89	4.4	1722.06	0.73	1723.24	3.7	1715.82	1.6	1700.33	9.0	1714.22		
12/18/21	0.36	1717.89	0.78	1723.14	2.1	1719.15	0.23	1720.67	0.45	1718.94	4.4	1722.04	0.73	1723.22	3.7	1715.80	1.6	1700.40	9.0	1714.18		
12/19/21	0.36	1717.90	1.0	1721.98	2.1	1718.72	0.35	1719.59	0.50	1718.23	4.4	1722.03	0.72	1723.21	3.7	1715.76	1.6	1699.85	9.0	1714.18		
12/20/21	0.36	1717.89	1.3	1720.15	2.0	1715.89	0.51	1718.05	0.58	1717.04	4.4	1722.00	0.72	1723.18	3.7	1715.71	1.5	1700.18	9.0	1714.12		
12/21/21	0.35	1717.88	1.2	1719.66	1.9	1714.67	0.50	1718.00	0.57	1717.02	4.4	1721.96	0.72	1723.14	3.7	1715.66	1.5	1700.12	9.0	1714.09		
12/22/21	0.35	1717.89	1.2	1716.72	1.9	1714.51	0.49	1718.05	0.56	1717.17	4.4	1721.95	0.72	1723.12	3.7	1715.61	1.5	1700.07	9.0	1714.08		
12/23/21	0.35	1717.89	1.2	1714.90	1.9	1714.08	0.49	1718.00	0.55	1717.18	4.4	1721.95	0.72	1723.11	3.7	1715.55	1.5	1699.74	9.0	1714.11		
12/24/21	0.34	1717.89	1.1	1714.98	1.9	1713.86	0.49	1717.93	0.54	1717.44	4.4	1721.93	0.73	1723.09	3.7	1715.48	1.5	1699.81	9.0	1714.06		
12/25/21	0.33	1717.88	1.1	1715.01	1.9	1713.61	0.49	1717.88	0.52	1717.75	4.4	1721.89	0.70	1723.08	3.7	1715.40	1.5	1700.15	8.9	1713.92		
12/26/21	0.34	1717.81	1.1	1715.21	1.9	1713.38	0.49	1717.86	0.49	1718.12	4.4	1721.86	0.71	1723.05	3.7	1715.33	1.5	1700.36	8.9	1713.79		
12/27/21	0.34	1717.79	1.1	1715.10	1.9	1713.22	0.49	1717.84	0.46	1718.18	4.4	1721.86	0.71	1723.04	3.7	1715.26	1.5	1700.33	8.9	1713.80		
12/28/21	0.33	1717.78	1	1715.08	1.9	1713.01	0.49	1717.82	0.48	1718.08	4.4	1721.83	0.71	1723.02	3.7	1715.17	1.5	1700.28	8.9	1713.71		
12/29/21	0.33	1717.71	1.1	1715.17	1.9	1712.80	0.49	1717.75	0.49	1717.97	4.4	1721.80	0.71	1723.00	3.7	1715.08	1.5	1700.17	8.9	1713.57		
12/30/21	0.33	1717.71	1.1	1715.17	1.9	1712.64	0.49	1717.74	0.49	1717.96	4.4	1721.78	0.71	1722.99	3.7	1715.00	1.5	1700.40	8.9	1713.53		
12/31/21	0.32	1717.72	1.1	1715.19	1.9	1712.51	0.49	1717.75	0.50	1717.90	4.4	1721.79	0.71	1722.99	3.7	1714.91	1.5	1800.23	8.9	1713.40		
Monthly Average	0.32	1718.09	0.92	1719.91	1.9	1717.75	0.34	1719.60	0.49	1718.29	4.4	1722.08	0.69	1723.03	3.7	1715.74	1.6	1703.32	9.0	1714.33		
Analytical ¹	Conc (mg/L)	Date	Conc (mg/L)	Date	Conc (mg/L)	Date	Conc (mg/L)	Date	Conc (mg/L)	Date	Conc (mg/L)	Date	Conc (mg/L)	Date	Conc (mg/L)	Date	Conc (mg/L)	Date	Conc (mg/L)	Date		
Perchlorate	570	12/13/2021	540	12/8/2021	230	12/8/2021	680	12/13/2021	540	12/13/2021	710	12/13/2021	550	12/16/2021	540	12/13/2021	520	12/8/2021	390	12/8/2021	250	12/16/2021
Hexavalent Chromium	10	12/13/2021	0.70	12/8/2021	1.2	12/8/2021	11	12/13/2021	11	12/13/2021	8.9	12/16/2021	6.5	12/13/2021	6.7	12/8/2021	0.87	12/8/2021	5.0	12/16/2021		
Total Chromium	13	12/13/2021	0.83	12/8/2021	1.4	12/8/2021	13	12/13/2021	13	12/13/2021	7.0	12/16/2021	9.2	12/13/2021	8.1	12/8/2021	1.0	12/8/2021	5.4	12/16/2021		

Notes:
 Flow reported as gpm is a daily average calculated from the totalizer reading.
 1: Analytical results are reported from Eurofins TestAmerica.
 2: From 12/01 to 12/03, the data server was offline; average flows and water levels are presented for these days.
 3: On 12/7 and 12/9, IWF wells were offline intermittently due to maintenance.
 5: On 12/19, I-D, I-E, I-H, I-L, I-M, I-R, I-T, and I-U adjusted to meet flow targets as directed by the Trust.
 6: On 12/22, I-R offline due to maintenance.
 7: On 12/07, I-U offline due to maintenance.
 8: On 12/06, I-W offline due to maintenance.

Nevada Environmental Response Trust Groundwater Extraction and Treatment System Enhanced Operational Metrics																
Date	LS #2	GWTP Effluent ¹				GW-11 Influent ¹				FBR Plant Influent ¹						
	Flow (gpm)	Flow (gpm)	TA - Cr (TR) (mg/L)	TA - Cr (VI) (mg/L)	TA - ClO ₄ (mg/L)	Flow ⁴ (gpm)	TA - Cr (TR) (mg/L)	TA - Cr (VI) (mg/L)	TA - ClO ₄ (mg/L)	Flow ² (gpm)	TA - ClO ₄ (mg/L)	ETI - ClO ₄ (mg/L)	TA - ClO ₃ (mg/L)	TA - NO ₃ - N (mg/L)	TA - Cr (TR) (mg/L)	TA - Cr (VI) (mg/L)
12/01/21 ³	792	60	0.42	ND	420	0.00				851		0				
12/02/21 ³	792	60				0.00				852		0				
12/03/21 ³	792	60				0.00				852		0				
12/04/21	871	59				0.04				930	61.0	0				
12/05/21	876	60				0.06				936		0				
12/06/21	870	61				0.03				931		0	110	9.5	0.011	0.014
12/07/21	871	65				0.02				935		0				
12/08/21	870	68	0.32	ND	430	0.02				937		0				
12/09/21	870	67				0.02				938		0				
12/10/21	868	72				0.05				941		0				
12/11/21	863	72				0.09				935	71	0				
12/12/21	875	67				0.09				943		0				
12/13/21	867	70				3.1	0.32	0.23	50	937		1				
12/14/21	869	69				0.05				938		1		9.4	0.34	0.32
12/15/21	872	68	0.25	0.073	390	0.08				940		0				
12/16/21	874	64				0.10				937		0				
12/17/21	817	64				0.08				1,000		0				
12/18/21	867	64				0.08				931	54	3				
12/19/21	871	64				0.09				935		0				
12/20/21	879	66				0.09				945		16		9.9	0.010	0.020
12/21/21	883	64				0.07				947		0				
12/22/21	881	58	0.13	ND	440	0.07				939		0				
12/23/21	880	59				0.02				939		0				
12/24/21	881	59				0.01				940		0				
12/25/21	882	69				0.04				951	0.65	0				
12/26/21	878	59				0.04				937		0				
12/27/21	882	58				0.05				940		0		9.5	0.008 J B	0.011
12/28/21	871	58				0.08				969		0				
12/29/21	875	58	0.13	ND	430	0.08				944		0				
12/30/21	886	59				0.04				946		0				
12/31/21	906	59				0.04				966		0				
Monthly Average ²	866	63	0.02	ND	323	0.15	0.320	0.230	50	934	42	0.7	110	9.6	0.085	0.084

Notes:
 Flow reported as gpm is a daily average calculated from the totalizer reading. The only exceptions are the instantaneous flow readings recorded for the 1st and 2nd Stage FBR flows
 B = Compound was found in the blank and sample.
 J = Result is less than the reporting limit but greater than or equal to the method detection limit and the concentration is an approximate value
 ND = Not detected above laboratory method detection limit (ClO₄ = 0.5 ug/L; ClO₃ = 10 ug/L; NO₃-N = 0.055 mg/L, Cr(VI) = 0.25 ug/L).
 1: ETI = Envirogen internal process control data, TA = Eurofins TestAmerica data
 2: All average concentrations reported are monthly flow weighted averages.
 3: From 12/01 to 12/03, the data server was offline; average flows and water levels are presented for these days.

Table 4 - Treatment Plant Operational Metrics

Date	1st Stage FBR ⁴			2nd Stage FBR ⁴			FBR Plant Effluent							
	Flow (gpm)	pH (s.u.)	ORP (mV)	Flow (gpm)	pH (s.u.)	ORP (mV)	Flow ^{5,6} (gpm)	TA - ClO ₂ (mg/L)	ETI - ClO ₄ (mg/L)	TA - ClO ₃ (mg/L)	TA - Cr (TR) (mg/L)	TA - Cr (VI) (mg/L)	TA - NO ₃ - N (mg/L)	ETI - Turbidity (NTU)
12/01/21 ²	959	6.4	-320	838	6.2	-369	921		0					17
12/02/21 ²	982	6.4	-356	787	6.2	-397	905		0					24
12/03/21 ²	1,047	6.5	-369	914	6.2	-415	989		0					14
12/04/21	958	6.5	-378	864	6.2	-430	989	ND	0					22
12/05/21	1,028	6.5	-387	956	6.3	-435	995		0					17
12/06/21	1,024	6.6	-395	950	6.3	-439	1,016		0	0.025 J	ND		0.063	22
12/07/21	961	6.6	-390	930	6.3	-441	1,009		0					25
12/08/21	1,007	6.5	-386	895	6.3	-439	1,000		0					20
12/09/21	1,026	6.5	-311	996	6.3	-267	1,007		0					22
12/10/21	1,063	6.4	-315	1,010	6.2	-267	1,003		0					19
12/11/21	991	6.4	-348	898	6.2	-300	1,022	ND	0					20
12/12/21	1,022	6.2	-320	860	6.2	-297	711		0					20
12/13/21	1,029	6.5	-315	874	6.3	-316	924		0		0.010		ND	15
12/14/21	1,019	6.5	-321	948	8.1	-326	987		0					22
12/15/21	998	6.5	-332	785	6.2	-328	975		0					20
12/16/21	1,035	6.5	-342	914	6.3	-349	1,015		0					27
12/17/21	1,021	5.8	-317	914	5.7	-326	1,018		0					40
12/18/21	1,017	6.4	-317	867	6.2	-352	624	ND	0					30
12/19/21	1,052	6.3	-241	1,000	6.1	-321	1,003		0					17
12/20/21	1,096	6.4	-346	910	6.2	-361	705		0		0.025		ND	28
12/21/21	1,062	6.2	-336	1,038	5.4	-298	1,034		0					29
12/22/21	1,058	6.2	-342	730	6.3	-340	1,033		0					35
12/23/21	1,008	6.2	-343	513	6.3	-353	1,023		0					20
12/24/21	1,058	6.3	-358	813	6.3	-361	1,022		0					20
12/25/21	1,058	6.3	-376	992	6.3	-370	1,036	ND	0					18
12/26/21	1,061	6.3	-384	766	6.3	-372	1,038		0					28
12/27/21	1,063	6.5	-388	961	6.3	-374	1,037		0		0.004 J B		0.034 J	18
12/28/21	1,072	6.4	-395	1,014	6.2	-373	1,033		0					20
12/29/21	1,056	6.4	-378	986	6.3	-355	1,039		0					19
12/30/21	1,058	6.3	-362	837	6.4	-352	1,034		0					20
12/31/21	1,046	6.3	-397	797	6.2	-366	1,034		0					20
Monthly Average ²	1,030	6.4	-351	889	6.3	-357	974	ND	ND	0.025	0.0085	ND	0.028	22

Notes:

- Flow reported as gpm is a daily average calculated from the totalizer reading. The only exceptions are the instantaneous flow readings recorded for the 1st and 2nd Stage FBR flows
- ND = Not detected above laboratory method detection limit (ClO₂ = 0.5 ug/L; ClO₃ = 10 ug/L; NO₃-N = 0.055 mg/L, Cr(VI) = 0.25 ug/L).
- J = Result is less than the reporting limit but greater than or equal to the method detection limit and the concentration is an approximate value
- 1: ETI = Envirogen internal process control data, TA = Eurofins TestAmerica data
- 2: All average concentrations reported are monthly flow weighted averages.
- 3: From 12/01 to 12/03, the data server was offline; average flows and water levels are presented for these days.
- 4: For 1st and 2nd stage FBRs, flow measurements are collected from the influent lines and pH and ORP samples are collected from the recycle line:
- 5: FBR Plant Effluent represents effluent discharged to Las Vegas Wash. While this may represent the entirety of the FBR Plant effluent, any diversions to GW-11 are subtracted from the original effluent flow
- 6: On 12/13, FBR effluent totalizer offline; manual totalizer readings are presented for this day.

GW-11 Level Monitoring ¹		
Date	Field Measurement (ft)	Volume (MG)
12/15/21	29.5	37.2
12/31/21	29.2	37.7

GW-11 Leak Detection Monitoring				
Date	Amount Pumped ² (gallons)			
	NW Corner	NE Corner	SW Corner	SE Corner
12/15/2021	0	0	651.4	0
12/29/2021	0	0	652.2	0

GW-11 Composite Sample ³		
Analytes	Concentration	Units
Perchlorate	1.40	mg/L
Chlorate	3.70	mg/L
Ammonia as N	0.088	mg/L
Total Phosphorus	0.71	mg/L
Total Dissolved Solids (TDS)	11,000 D	mg/L
Total Suspended Solids (TSS)	71	mg/L
pH	8.5 HF	s.u.
Calcium	570 B	mg/L
Iron	0.30	mg/L
Chromium (total)	0.0420	mg/L
Chromium VI	ND	mg/L
Chloride	5,100	mg/L
Nitrate as N	0.410	mg/L
Sulfate	4,200	mg/L

Notes:

B = Compound was found in the blank and sample.

HF = Field parameter with a holding time of 15 minutes. Test performed by laboratory at client's request.

J = Result is less than the reporting limit but greater than or equal to the method detection limit and the concentration is an approximate value.

ND = Not detected above laboratory method detection limit (NH₃-N= 0.1 mg/L; Total P = 0.025 ug/L; Cr(VI) = 0.25 ug/L).

1: A transducer installed along the eastern berm provides water pressure measurements that are correlated to elevations for calculation of water depths. Results from a December 2018 bathymetric survey of the pond will be used to identify adjustment to the procedure, if necessary.

2: Pumping occurs over three consecutive days. The total amount pumped over the three day period is listed with the last day pumping occurred.

3: GW-11 Corner Composite Sample is collected quarterly, most recent sampling results are presented. Sampled on: November 16, 2021

Nevada Environmental Response Trust Groundwater Extraction and Treatment System Enhanced Operational Metrics						
Date	Flow ¹ (gpm)	FBR Influent Concentration			Influent Function Load ³ (lbs/day)	6 Month Rolling Average (lbs/day)
		ClO ₄ ² (mg/L)	NO ₃ as N (mg/L)	ClO ₃ (mg/L)		
Jan 2021	1,047	54	9	110	454	465
Feb 2021	1,023	61	8	110	457	465
March 2021	1,012	56	7	120	447	467
April 2021	1,027	55	6.1	110	420	460
May 2021	1,031	58	8	120	476	456
June 2021	1,027	58	8	120	470	454
July 2021	1,043	62	8	120	487	460
Aug 2021	1,063	62	9	120	502	467
Sep 2021	954	62	11	130	492	475
Oct 2021	924	66	11	120	464	473
Nov 2021	879	49	10	120	406	471
Dec 2021	934	42	10	110	391	457

Notes:

Concentrations and flow are presented as monthly average.

1: Flow used in loading calculation is average monthly FBR influent flow.

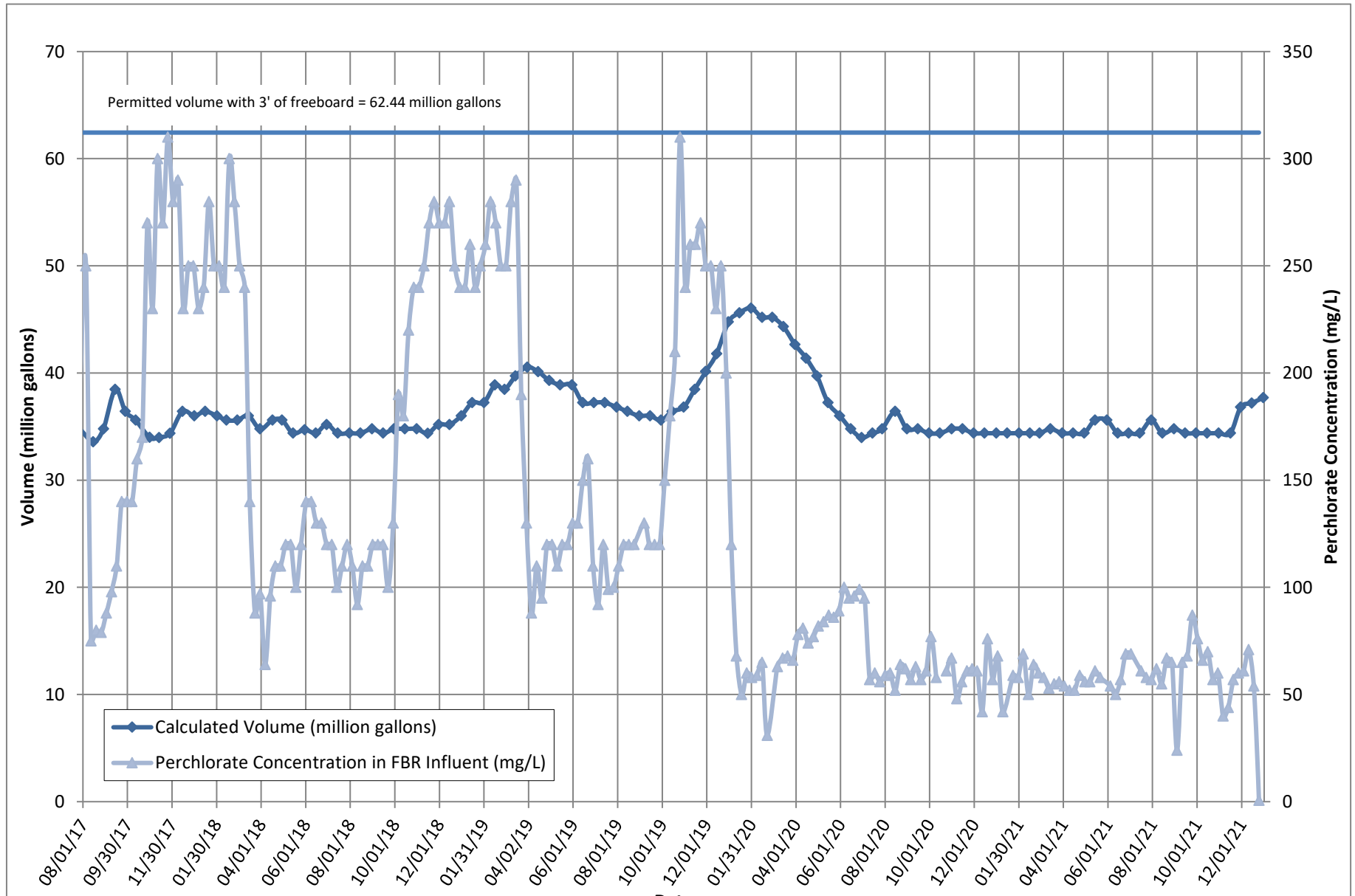
2: The AP-5 wash water feed rate was increased on October 1, 2019 in accordance with the higher seasonal ammonia permit limits beginning October 1. The AP-5 wash water feed rate was decreased in March 2020 to prepare for the lower seasonal ammonia permit limits beginning April 1. AP-5 sediment mixing and solids washing activities were completed on January 4, 2020. AP-5 tank processing was completed on 7/15/20.

3: FBR loading calculated as $[(0.9 \cdot \text{NO}_3 \text{ as N} + 0.17 \cdot \text{ClO}_3 + 0.18 \cdot \text{ClO}_4) \cdot \text{Flow} \cdot 1440 / 1000000 \cdot 8.34]$.

Nevada Environmental Response Trust Groundwater Extraction and Treatment System Enhanced Operational Metrics																
Date	E1-1		E1-2		E1-3		E2-1		E2-2		E2-3		E2-4		E2-5	
	Flow (gpm)	Water Elevation (ft amsl)	Flow (gpm)	Water Elevation (ft amsl)	Flow (gpm)	Water Elevation (ft amsl)	Flow (gpm)	Water Elevation (ft amsl)	Flow (gpm)	Water Elevation (ft amsl)	Flow (gpm)	Water Elevation (ft amsl)	Flow (gpm)	Water Elevation (ft amsl)	Flow (gpm)	Water Elevation (ft amsl)
12/01/21 ²	2.1	1714.61	0.91	1710.91	0.86	1712.02	0.93	1715.80	1.1	1717.06	1.2	1717.14	1.6	1715.59	0.21	1714.57
12/02/21 ²	2.2	1714.20	0.90	1712.44	0.85	1711.91	0.98	1716.02	0.99	1716.71	1.3	1716.95	1.0	1716.12	0.57	1714.21
12/03/21 ²	2.5	1713.45	0.89	1714.41	0.81	1711.70	0.93	1716.74	1.0	1717.54	1.2	1716.42	1.3	1716.29	0.40	1713.59
12/04/21	2.5	1713.37	0.87	1714.31	0.65	1712.03	0.92	1716.69	0.98	1718.20	1.2	1716.27	1.2	1717.26	0.42	1713.62
12/05/21	2.5	1713.08	0.92	1713.81	1.3	1712.84	0.95	1716.11	1.2	1717.45	1.2	1717.67	1.2	1716.96	0.47	1713.88
12/06/21	2.3	1713.22	0.83	1713.51	0.71	1712.31	0.91	1716.27	1.2	1717.40	1.2	1717.40	1.2	1717.07	0.45	1714.01
12/07/21 ³	2.4	1713.13	0.87	1713.71	0.79	1712.52	0.95	1716.41	1.2	1716.54	1.2	1716.85	1.2	1716.75	0.47	1714.03
12/08/21	2.5	1713.19	0.87	1713.22	0.85	1712.61	0.94	1715.67	1.2	1715.12	1.1	1717.73	1.2	1716.52	0.42	1715.61
12/09/21 ³	2.5	1712.48	0.83	1712.51	0.85	1712.42	0.96	1714.96	1.2	1716.39	1.1	1717.85	1.2	1716.50	0.43	1714.43
12/10/21	2.6	1711.32	0.85	1711.35	0.82	1713.19	1.0	1716.17	1.1	1717.36	1.1	1719.13	1.2	1716.37	0.39	1715.37
12/11/21 ³	2.6	1711.62	0.85	1711.65	0.81	1713.17	1.0	1716.07	1.1	1717.11	1.4	1715.97	1.2	1716.50	0.37	1714.68
12/12/21	2.6	1712.05	0.86	1712.08	0.82	1713.10	0.97	1715.92	1.1	1717.26	1.3	1715.90	1.2	1716.33	0.34	1714.52
12/13/21 ³	2.7	1711.44	0.90	1711.71	0.82	1712.12	0.83	1716.12	0.98	1717.32	0.78	1715.55	1.0	1716.11	0.35	1714.12
12/14/21 ³	2.5	1711.42	0.90	1711.45	0.88	1711.35	0.94	1716.17	0.87	1717.33	1.3	1715.47	0.99	1716.10	0.25	1714.04
12/15/21	2.5	1711.33	0.8	1710.71	0.80	1711.45	0.80	1716.27	1.0	1717.42	1.0	1715.40	1.1	1716.36	0.19	1714.21
12/16/21	2.6	1711.72	0.86	1710.78	0.92	1710.52	0.88	1716.92	1.1	1716.81	1.1	1719.11	1.2	1716.70	0.23	1719.61
12/17/21	2.5	1712.24	0.84	1711.59	0.84	1712.74	0.81	1718.69	1.1	1717.81	1.0	1720.44	1.2	1717.40	0.34	1717.44
12/18/21	2.5	1711.73	0.84	1711.46	0.89	1712.57	0.96	1718.32	1.2	1717.42	0.93	1722.05	1.2	1717.11	0.53	1716.62
12/19/21	2.5	1711.58	0.82	1711.29	0.86	1712.07	0.90	1717.40	1.1	1716.47	0.90	1722.90	1.2	1716.96	0.51	1716.01
12/20/21	2.5	1711.43	0.81	1711.41	0.85	1712.50	0.85	1717.11	1.1	1716.87	1.7	1718.55	1.2	1717.24	0.52	1717.07
12/21/21	2.4	1711.60	0.80	1711.57	0.86	1713.10	0.81	1717.31	1.1	1715.72	1.6	1708.19	1.2	1715.74	0.51	1715.50
12/22/21	2.7	1711.43	0.87	1710.66	0.94	1710.20	0.92	1716.36	1.2	1714.53	0.13	1722.30	1.3	1715.44	0.53	1714.70
12/23/21	2.4	1709.66	0.83	1710.38	0.85	1711.74	0.78	1716.50	1.1	1714.92	0.34	1724.49	1.2	1715.64	0.34	1717.36
12/24/21	2.5	1709.71	0.84	1710.70	0.86	1712.10	0.86	1717.78	1.2	1716.20	0.51	1723.43	1.2	1717.00	0.31	1715.49
12/25/21	2.5	1709.57	0.84	1710.34	0.88	1712.08	0.95	1715.37	1.2	1715.64	0.69	1721.65	1.3	1715.89	0.32	1716.08
12/26/21	2.5	1711.71	0.82	1711.77	0.88	1712.24	0.93	1718.57	1.2	1717.44	0.78	1723.09	1.3	1717.55	0.34	1716.98
12/27/21	2.5	1712.05	0.80	1712.05	0.88	1712.65	1.1	1716.70	1.1	1717.28	1.1	1720.64	1.2	1717.67	0.32	1716.80
12/28/21	2.3	1711.53	0.70	1712.09	0.82	1711.97	0.96	1716.21	1.1	1716.50	1.2	1717.34	1.1	1717.14	0.28	1716.37
12/29/21	2.5	1711.32	0.78	1711.80	0.91	1712.08	1.1	1716.30	1.2	1715.62	1.3	1717.39	1.2	1717.17	0.30	1716.00
12/30/21	2.5	1710.78	0.78	1711.46	0.88	1710.60	1.0	1715.47	1.1	1715.24	1.2	1715.90	1.2	1716.51	0.27	1715.55
12/31/21	2.5	1709.66	0.78	1711.33	0.88	1710.08	1.0	1715.39	1.1	1714.44	1.2	1716.01	1.2	1716.24	0.27	1715.30
Monthly Average	2.5	1711.86	0.84	1711.90	0.86	1712.07	0.93	1716.51	1.1	1716.62	1.1	1718.22	1.2	1716.59	0.38	1715.41
Analytical ¹	Conc (mg/L)	Date	Conc (mg/L)	Date	Conc (mg/L)	Date	Conc (mg/L)	Date	Conc (mg/L)	Date	Conc (mg/L)	Date	Conc (mg/L)	Date	Conc (mg/L)	Date
Perchlorate	380	12/16/2021	930	12/16/2021	520	12/16/2021	84	12/16/2021	340	12/16/2021	640	12/16/2021	740	12/16/2021	870	12/16/2021
Hexavalent Chromium	0.53	12/16/2021	0.44	12/16/2021	0.071	12/16/2021	0.027	12/16/2021	0.025	12/16/2021	0.063	12/16/2021	0.073	12/16/2021	0.14	12/16/2021
Total Chromium	0.60	12/16/2021	0.48	12/16/2021	0.074	12/16/2021	0.031	12/16/2021	0.026	12/16/2021	0.068	12/16/2021	0.074	12/16/2021	0.20	12/16/2021

Notes:
 Flow reported as gpm is a daily average calculated from the totalizer reading.
 The flow rate at individual wells is adjusted daily to maintain the water level in the wells above the pump.
 1: Analytical results are reported from Eurofins TestAmerica.
 2: From 12/01 to 12/03, the data server was offline; average flows and water levels are presented for these days.
 3: On 12/07, 12/09, 12/11, 12/13, and 12/14, AP Area wells offline intermittently.
 4: Duplicates taken on 12/16 for well E2-1; average of both values is presented and used for calculations.

Figure 1 - GW-11 Pond Volume and FBR Influent Perchlorate Concentration



Note:
 1. Treatment of AP-5 wash water began on July 17, 2017 and was suspended on August 4, 2017 to allow Envirogen to evaluate internal process controls to meet discharge limits. Treatment of AP-5 wash water resumed on August 31, 2017. The AP-5 wash water feed rate was increased on October 1, 2019 in accordance with the higher seasonal ammonia permit limits beginning October 1. The AP-5 wash water feed rate was decreased in March 2019 to prepare for the lower seasonal ammonia permit limits beginning April 1. AP-5 tank processing was completed on 7/15/20.

Figure 2 - FBR Equivalent Loading Calculation

