

Table 1 - Seep Well Field (SWF) Operational Metrics

Nevada Environmental Response Trust Groundwater Extraction and Treatment System Enhanced Operational Metrics																			
Date	LS #1 Flow (gpm)	PC-116R (East Well)		PC-99R2/R3 (Center Well)		PC-115R (West Well)		PC-117		PC-118		PC-119		PC-120		PC-121		PC-133	
		Flow (gpm)	Water Elevation (ft amsl)	Flow (gpm)	Water Elevation (ft amsl)	Flow (gpm)	Water Elevation (ft amsl)	Flow (gpm)	Water Elevation (ft amsl)	Flow (gpm)	Water Elevation (ft amsl)	Flow (gpm)	Water Elevation (ft amsl)	Flow (gpm)	Water Elevation (ft amsl)	Flow (gpm)	Water Elevation (ft amsl)	Flow ⁴ (gpm)	Water Elevation ² (ft amsl)
11/01/21	460	162	1536.20	93	1540.03	130	1542.21	106	1533.63	68	1546.41	102	1548.07	50	1549.11	20	1550.27	9.8	< 1520.00
11/02/21	461	162	1536.18	93	1540.02	130	1542.19	106	1533.60	68	1546.41	102	1548.06	50	1549.10	20	1550.26	9.7	< 1520.00
11/03/21	479	162	1536.16	93	1540.00	130	1542.19	106	1533.59	68	1546.40	102	1548.06	50	1549.10	20	1550.26	9.7	< 1520.00
11/04/21	478	162	1536.16	93	1539.98	130	1542.19	106	1533.58	68	1546.40	102	1548.06	50	1549.10	20	1550.26	9.8	< 1520.00
11/05/21	478	162	1536.15	93	1539.95	130	1542.19	106	1533.58	68	1546.40	102	1548.06	50	1549.10	20	1550.26	9.7	< 1520.00
11/06/21	476	162	1536.14	93	1539.94	130	1542.19	106	1533.57	68	1546.40	102	1548.06	50	1549.10	20	1550.26	9.7	< 1520.00
11/07/21	476	162	1536.14	93	1539.91	130	1542.18	106	1533.56	68	1546.39	102	1548.06	50	1549.10	20	1550.25	9.7	< 1520.00
11/08/21	480	162	1536.13	93	1539.90	130	1542.18	106	1533.55	68	1546.38	102	1548.05	50	1549.09	20	1550.25	9.7	< 1520.00
11/09/21	466	162	1536.12	93	1539.89	130	1542.17	106	1533.54	68	1546.38	102	1548.05	50	1549.08	20	1550.24	9.7	< 1520.00
11/10/21	467	162	1536.12	93	1539.89	130	1542.17	106	1533.53	68	1546.38	102	1548.05	50	1549.09	20	1550.24	9.7	< 1520.00
11/11/21	466	161	1536.13	93	1539.89	130	1542.19	106	1533.54	68	1546.39	102	1548.07	50	1549.10	20	1550.26	8.4	< 1520.00
11/12/21	465	161	1536.13	93	1539.89	130	1542.20	106	1533.53	68	1546.40	102	1548.09	50	1549.12	20	1550.28	10	< 1520.00
11/13/21	465	161	1536.15	93	1539.87	130	1542.22	106	1533.54	68	1546.41	102	1548.11	50	1549.14	20	1550.30	10	< 1520.00
11/14/21	463	161	1536.16	93	1539.86	130	1542.23	106	1533.54	68	1546.42	102	1548.12	50	1549.16	20	1550.32	10	< 1520.00
11/15/21	461	161	1536.18	94	1539.85	130	1542.25	106	1533.56	68	1546.44	102	1548.14	50	1549.18	20	1550.34	10	< 1520.00
11/16/21	462	161	1536.19	94	1539.82	130	1542.27	106	1533.57	68	1546.45	102	1548.16	50	1549.20	20	1550.35	10	< 1520.00
11/17/21	461	161	1536.20	94	1539.82	130	1542.27	106	1533.57	68	1546.45	102	1548.16	50	1549.20	20	1550.36	10	< 1520.00
11/18/21	460	161	1536.21	94	1539.82	130	1542.28	106	1533.57	68	1546.46	102	1548.17	50	1549.21	20	1550.37	10	< 1520.00
11/19/21	462	161	1536.23	94	1539.80	130	1542.29	106	1533.58	68	1546.47	102	1548.19	50	1549.22	20	1550.38	10	< 1520.00
11/20/21	465	161	1536.24	94	1539.79	130	1542.30	106	1533.58	68	1546.48	102	1548.20	50	1549.24	20	1550.39	10	< 1520.00
11/21/21	466	161	1536.24	94	1539.81	130	1542.30	106	1533.58	68	1546.48	102	1548.20	50	1549.24	20	1550.39	10	< 1520.00
11/22/21	469	161	1536.25	94	1539.79	130	1542.31	106	1533.58	68	1546.49	102	1548.21	50	1549.25	20	1550.41	10	< 1520.00
11/23/21	467	161	1536.26	94	1539.75	130	1542.32	106	1533.58	68	1546.50	102	1548.22	50	1549.26	20	1550.42	10	< 1520.00
11/24/21	467	161	1536.24	94	1539.77	130	1542.31	106	1533.56	68	1546.49	102	1548.20	50	1549.24	20	1550.40	10	< 1520.00
11/25/21	467	161	1536.23	94	1539.79	130	1542.30	106	1533.55	68	1546.48	102	1548.20	50	1549.23	20	1550.39	10	< 1520.00
11/26/21	468	161	1536.23	94	1539.76	130	1542.30	106	1533.55	68	1546.49	102	1548.21	50	1549.24	20	1550.40	10	< 1520.00
11/27/21	468	161	1536.23	94	1539.73	130	1542.30	106	1533.54	68	1546.48	102	1548.20	50	1549.24	20	1550.40	10.1	< 1520.00
11/28/21	467	161	1536.21	94	1539.73	130	1542.29	106	1533.53	68	1546.48	102	1548.19	50	1549.23	20	1550.39	10	< 1520.00
11/29/21	468	161	1536.21	94	1539.71	130	1542.29	106	1533.53	68	1546.48	102	1548.19	50	1549.23	20	1550.39	10	< 1520.00
11/30/21 ¹	467	161	1536.23	94	1539.75	130	1542.30	106	1533.55	68	1546.49	102	1548.20	50	1549.24	20	1550.40	10.1	< 1520.00
Monthly Average	468	161	1536.19	94	1539.85	130	1542.25	106	1533.56	68	1546.44	102	1548.13	50	1549.17	20	1550.33	10.0	< 1520.00
Analytical ¹	Conc (mg/L)	Date	Conc (mg/L)	Date	Conc (mg/L)	Date	Conc (mg/L)	Date	Conc ² (mg/L)	Date	Conc (mg/L)	Date	Conc (mg/L)	Date	Conc (mg/L)	Date	Conc (mg/L)	Date	
Perchlorate	13	11/15/2021	8.2	11/15/2021	2.4	11/15/2021	8.4	11/15/2021	1.2	11/15/2021	0.11	11/15/2021	0.0024	11/15/2021	ND	11/15/2021	0.51	11/15/2021	
Hexavalent Chromium	0.0027	11/15/2021	ND	11/15/2021	ND	11/15/2021	0.0038	11/15/2021	ND	11/15/2021	ND	11/15/2021	ND	11/15/2021	ND	11/15/2021	ND	11/15/2021	
Total Chromium	ND	11/15/2021	ND	11/15/2021	ND	11/15/2021	0.0018	11/15/2021	ND	11/15/2021	ND	11/15/2021	ND	11/15/2021	ND	11/15/2021	ND	11/15/2021	

Notes:
 Flow reported as gpm is a daily average calculated from the totalizer reading.
 ND = Not detected above laboratory method detection limit (Cr(TR)=2.5 ug/L, Cr(VI) =0.20 ug/L).
 J = Result is less than the reporting limit but greater than or equal to the method detection limit and the concentration is an approximate value.
 1: Analytical results are reported from Eurofins TestAmerica.
 2: A "<" preceding the water elevation indicates the reported water level is below the transducer. Average monthly water elevation calculations include the transducer elevation in instances where the water level is below the transducer.
 3: On 11/30, the data server was offline; average flows and water levels are presented for this day.
 4: On 11/11, PC-133 down for maintenance
 5: Duplicates taken on 11/15 for well PC-118; average of both values is presented and used for calculations.

Table 2 - Athens Well Field (AWF) Operational Metrics

Nevada Environmental Response Trust Groundwater Extraction and Treatment System Enhanced Operational Metrics																		
Date	LS #3 Flow (gpm)	ART-1/1A		ART-2/2A		ART-3/3A		ART-4/4A		ART-9		ART-7A/7B		ART-8/8A		PC-150		
		Flow (gpm)	Water Elevation (ft amsl)	Flow ³ (gpm)	Water Elevation (ft amsl)	Flow (gpm)	Water Elevation (ft amsl)	Flow (gpm)	Water Elevation (ft amsl)	Flow (gpm)	Water Elevation (ft amsl)	Flow (gpm)	Water Elevation (ft amsl)	Flow ⁴ (gpm)	Water Elevation (ft amsl)	Flow ⁵ (gpm)	Water Elevation (ft amsl)	
11/01/21	399	42	1584.62	138	1584.43	23	1583.09	4.1	1578.84	58	1579.32	19	1584.73	170	1583.85	1.5	1579.13	
11/02/21	399	42	1584.59	139	1584.40	23	1583.07	4.0	1578.84	58	1579.32	19	1584.73	170	1583.83	1.5	1579.12	
11/03/21	399	42	1584.57	139	1584.38	23	1583.06	4.0	1578.84	58	1579.32	19	1584.73	170	1583.82	1.5	1579.11	
11/04/21	398	42	1584.56	139	1584.37	23	1583.05	4.0	1578.84	57	1579.32	19	1584.73	170	1583.80	1.5	1579.10	
11/05/21	398	42	1584.54	139	1584.35	23	1583.04	4.0	1578.84	57	1579.32	19	1584.73	170	1583.79	1.5	1579.10	
11/06/21	398	42	1584.52	139	1584.33	23	1583.03	4.0	1578.84	57	1579.32	19	1584.73	170	1583.76	1.5	1579.09	
11/07/21	398	42	1584.51	139	1584.32	23	1583.02	4.0	1578.84	57	1579.32	19	1584.73	169	1583.77	1.5	1579.09	
11/08/21	398	42	1584.49	139	1584.30	23	1583.00	4.0	1578.84	57	1579.32	19	1584.73	169	1583.75	1.5	1578.84	
11/09/21	397	42	1584.48	139	1584.29	23	1583.00	3.9	1578.84	57	1579.32	19	1584.73	169	1583.75	1.5	1578.78	
11/10/21	331	42	1584.85	139	1585.08	24	1583.40	4.1	1578.84	57	1579.32	19	1584.73	92	1581.82	1.5	1579.00	
11/11/21	323	42	1585.22	139	1585.67	25	1583.77	4.3	1578.84	57	1579.32	19	1584.73	80	1581.34	1.5	1579.19	
11/12/21	324	42	1585.44	139	1585.91	26	1583.96	4.4	1578.84	57	1579.32	19	1584.73	80	1581.58	1.5	1579.26	
11/13/21	324	42	1585.59	140	1586.08	26	1584.08	4.5	1578.84	57	1579.32	19	1584.73	80	1581.74	1.5	1579.31	
11/14/21	325	42	1585.64	140	1586.20	26	1584.18	4.5	1578.84	57	1579.32	19	1584.73	80	1581.85	1.5	1579.34	
11/15/21	325	42	1585.73	140	1586.31	26	1584.26	4.5	1578.84	57	1579.32	19	1584.73	80	1581.95	1.5	1579.36	
11/16/21	325	42	1585.76	140	1586.40	27	1584.33	4.6	1578.84	57	1579.32	19	1584.73	80	1582.03	1.5	1579.38	
11/17/21	325	42	1585.84	140	1586.47	27	1584.39	4.7	1578.84	57	1579.32	19	1584.73	80	1582.09	1.5	1579.39	
11/18/21	326	42	1585.91	140	1586.53	27	1584.44	4.8	1578.84	57	1579.32	19	1584.73	80	1582.15	1.5	1579.41	
11/19/21	326	42	1585.92	140	1586.60	27	1584.49	4.8	1578.84	57	1579.32	19	1584.73	80	1582.20	1.5	1579.43	
11/20/21	326	42	1585.97	140	1586.65	27	1584.53	4.9	1578.84	57	1579.32	19	1584.73	81	1582.24	1.5	1579.43	
11/21/21	327	42	1586.01	140	1586.69	27	1584.57	4.9	1578.84	57	1579.32	19	1584.73	81	1582.28	1.5	1579.44	
11/22/21	327	42	1586.00	134	1586.75	27	1584.61	4.8	1578.84	57	1579.32	19	1584.73	81	1582.33	1.5	1579.45	
11/23/21	327	42	1586.09	140	1586.80	27	1584.65	4.9	1578.84	57	1579.32	19	1584.73	81	1582.37	1.5	1579.46	
11/24/21	327	42	1586.05	140	1586.82	27	1584.67	4.9	1578.84	57	1579.32	18	1584.72	81	1582.38	1.5	1579.46	
11/25/21	327	42	1586.09	140	1586.85	27	1584.69	4.9	1578.84	57	1579.32	19	1584.72	81	1582.42	1.5	1579.47	
11/26/21	327	42	1586.12	139	1586.90	27	1584.73	4.9	1578.84	57	1579.32	19	1584.72	81	1582.46	1.5	1579.48	
11/27/21	327	42	1586.15	139	1586.93	27	1584.75	4.9	1578.84	57	1579.32	19	1584.72	81	1582.48	1.5	1579.48	
11/28/21	327	42	1586.17	140	1586.96	27	1584.78	4.9	1578.84	57	1579.32	19	1584.73	81	1582.51	1.5	1579.47	
11/29/21	328	42	1586.21	140	1587.00	28	1584.81	5.0	1578.84	57	1579.32	19	1584.73	81	1582.54	1.5	1579.47	
11/30/21 ¹	327	42	1586.11	139	1586.88	27	1584.71	4.9	1578.84	57	1579.32	19	1584.72	81	1582.43	1.5	1579.47	
Monthly Average	348	42	1585.46	139	1585.86	25	1584.01	4.5	1578.84	57	1579.32	19	1584.73	108	1582.64	1.5	1579.28	
Analytical ¹	Conc (mg/L)		Conc (mg/L)		Date		Conc (mg/L)		Date		Conc (mg/L)		Date		Conc ⁵ (mg/L)		Date	
Perchlorate	28	11/15/2021	11	11/15/2021	180	11/15/2021	99	11/15/2021	110	11/15/2021	66	11/15/2021	61	11/15/2021	45	11/15/2021		
Hexavalent Chromium	ND	11/15/2021	ND	11/15/2021	0.17	11/15/2021	0.071	11/15/2021	0.31	11/15/2021	0.19	11/15/2021	0.059	11/15/2021	0.031	11/15/2021		
Total Chromium	ND	11/15/2021	0.0021	11/15/2021	0.22	11/15/2021	0.099	11/15/2021	0.52	11/15/2021	0.37	11/15/2021	0.091	11/15/2021	0.041	11/15/2021		

Notes:
 Flow reported as gpm is a daily average calculated from the totalizer reading.
 ND = Not detected above laboratory method detection limit (ClO₄ = 0.5 ug/L; ClO₃ = 10 ug/L; NO₃-N = 0.055 mg/L, Cr(VI) = 0.25 ug/L).
 ART-1, 2, 3, 4, 7B, and 8 have adjacent recovery wells, both of which can be used for extraction. The pumping well can be chosen manually or automatically, based on operational considerations. The wells with transducers are ART-1, -2, -3, -4, -7A, -8, -9, and PC-150
 1: Analytical results are reported from Eurofins TestAmerica.
 2: On 11/30, the data server was offline; average flows and water levels are presented for this day.
 3: From 11/26 to 11/27, ART2/2A totalizer failed; averaged flows are presented for this range
 4: On 11/10, Art8A switched to ART8 at reduced flow rate until repairs can be made.
 5: Conducted periodic bucket tests to confirm flow rates for PC-150. Average flow of 1.5 gpm determined from flow tests is presented for 11/01-11/30 flows and used for calculation purposes. Flow was steady throughout the month but the totalizer showed zero flow because totalizer units are 1,000 gallons.
 6: Duplicates taken on 11/15 for well ART-8A; average of both values is presented and used for calculations.

Nevada Environmental Response Trust Groundwater Extraction and Treatment System Enhanced Operational Metrics																				
Date	I-AR		I-AA		I-AB		I-AC		I-AD		I-B		I-C		I-D		I-E		I-F	
	Flow (gpm)	Water Elevation (ft amsl)	Flow (gpm)	Water Elevation (ft amsl)	Flow (gpm)	Water Elevation (ft amsl)	Flow (gpm)	Water Elevation (ft amsl)	Flow (gpm)	Water Elevation (ft amsl)	Flow (gpm)	Water Elevation (ft amsl)	Flow (gpm)	Water Elevation (ft amsl)	Flow (gpm)	Water Elevation (ft amsl)	Flow (gpm)	Water Elevation (ft amsl)	Flow (gpm)	Water Elevation (ft amsl)
11/01/21	0.08	1723.13	0.97	1707.56	0.00	1719.45	0.00	1725.37	0.8	1722.08	0.50	1709.80	3.7	1708.80	1.2	1721.43	0.87	1718.27	4.3	1720.12
11/02/21	0.08	1723.18	0.97	1707.56	0.00	1719.44	0.00	1725.35	0.7	1722.22	0.50	1709.75	3.7	1708.80	1.2	1721.42	0.87	1718.25	4.3	1720.11
11/03/21	0.08	1723.25	0.97	1707.56	0.00	1719.44	0.00	1725.35	0.7	1722.17	0.50	1709.76	3.7	1708.80	1.2	1721.42	0.88	1718.24	4.3	1720.10
11/04/21	0.08	1723.30	0.97	1707.56	0.012	1719.21	0.00	1725.36	0.7	1722.16	0.50	1709.75	3.7	1708.80	1.2	1721.41	0.9	1718.22	4.3	1720.10
11/05/21	0.08	1723.35	0.97	1707.56	0.00	1719.45	0.00	1725.35	0.7	1722.17	0.50	1709.75	3.7	1708.80	1.2	1721.41	0.87	1718.23	4.3	1720.09
11/06/21	0.08	1723.36	0.97	1707.56	0.00	1719.46	0.00	1725.35	0.7	1722.15	0.50	1709.75	3.7	1708.80	1.2	1721.40	0.88	1718.20	4.3	1720.09
11/07/21	0.07	1723.37	0.97	1707.56	0.00	1719.46	0.00	1725.32	0.7	1722.17	0.51	1709.78	3.7	1708.80	1.2	1721.40	0.88	1718.16	4.3	1720.07
11/08/21	0.07	1723.41	0.97	1707.56	0.000	1719.45	0.00	1725.30	0.7	1722.20	0.50	1709.81	3.7	1708.80	1.2	1721.38	0.88	1718.13	4.3	1720.05
11/09/21 ¹	0.08	1723.37	0.96	1707.78	0.00	1719.47	0.00	1725.27	0.7	1722.46	0.47	1710.23	3.7	1709.27	1.1	1721.40	0.86	1718.21	4.2	1720.08
11/10/21	0.08	1723.23	0.97	1707.58	0.00	1719.51	0.00	1725.26	0.7	1722.41	0.49	1709.81	3.7	1708.81	1.1	1721.40	0.88	1718.12	4.3	1720.02
11/11/21	0.08	1723.23	0.97	1707.59	0.00	1719.52	0.00	1725.25	0.7	1722.38	0.50	1709.77	3.7	1708.81	1.2	1721.39	0.88	1718.07	4.3	1720.00
11/12/21	0.08	1723.24	0.97	1707.59	0.00	1719.54	0.00	1725.24	0.7	1722.36	0.51	1709.78	3.7	1708.80	1.1	1721.38	0.89	1718.05	4.3	1719.98
11/13/21	0.08	1723.34	0.97	1707.59	0.00	1719.55	0.00	1725.25	0.7	1722.34	0.49	1709.90	3.7	1708.80	1.1	1721.38	0.86	1718.14	4.3	1719.97
11/14/21	0.08	1723.35	0.97	1707.60	0.00	1719.56	0.00	1725.25	0.7	1722.35	0.48	1709.90	3.7	1708.80	1.1	1721.38	0.73	1718.86	4.3	1719.95
11/15/21	0.08	1723.40	0.97	1707.60	0.00	1719.56	0.00	1725.26	0.7	1722.34	0.48	1709.82	3.7	1708.80	1.1	1721.38	0.75	1718.79	4.3	1719.94
11/16/21 ¹	0.08	1723.38	0.97	1707.64	0.00	1719.58	0.00	1725.28	0.7	1722.48	0.43	1711.60	3.7	1708.95	1.1	1721.38	0.74	1718.82	4.3	1719.95
11/17/21	0.09	1723.14	0.97	1707.59	0.00	1719.61	0.012	1724.88	0.69	1722.46	0.42	1712.35	3.6	1708.80	1.2	1721.37	0.78	1718.61	4.3	1719.93
11/18/21	0.11	1722.40	0.97	1707.60	0.00	1719.61	0.00	1725.59	0.69	1722.42	0.48	1710.11	3.6	1708.80	1.2	1721.36	0.79	1718.53	4.3	1719.92
11/19/21	0.11	1722.30	0.98	1707.60	0.00	1719.62	0.00	1725.55	0.69	1722.43	0.54	1709.70	3.6	1708.80	1.2	1721.36	0.79	1718.56	4.3	1719.91
11/20/21	0.11	1722.24	0.97	1707.60	0.00	1719.62	0.00	1725.52	0.68	1722.48	0.55	1709.72	3.6	1708.80	1.2	1721.35	0.79	1718.51	4.3	1719.90
11/21/21 ¹	0.11	1722.09	0.96	1707.84	0.00	1719.63	0.00	1725.42	0.65	1722.71	0.54	1710.03	3.7	1709.31	1.1	1721.36	0.76	1718.64	4.2	1719.93
11/22/21	0.08	1722.89	0.98	1707.59	0.00	1719.65	0.00	1725.34	0.66	1722.66	0.55	1709.84	3.7	1708.79	1.1	1721.38	0.78	1718.62	4.3	1719.91
11/23/21	0.08	1723.35	0.98	1707.59	0.00	1719.64	0.00	1725.37	0.67	1722.62	0.55	1709.80	3.7	1708.79	1.1	1721.37	0.78	1718.63	4.3	1719.89
11/24/21	0.08	1723.45	0.98	1707.59	0.00	1719.62	0.00	1725.33	0.66	1722.59	0.54	1709.85	3.7	1708.79	1.1	1721.34	0.78	1718.58	4.3	1719.85
11/25/21	0.09	1723.37	0.96	1707.88	0.00	1719.63	0.00	1725.29	0.61	1722.89	0.54	1710.20	3.7	1709.41	1.0	1721.36	0.75	1718.70	4.2	1719.89
11/26/21	0.08	1723.12	0.98	1707.65	0.00	1719.64	0.00	1725.33	0.60	1723.02	0.56	1709.90	3.7	1708.80	0.95	1721.42	0.80	1718.49	4.3	1719.88
11/27/21	0.08	1723.26	0.98	1707.58	0.00	1719.63	0.00	1725.31	0.61	1722.94	0.61	1709.68	3.7	1708.80	0.96	1721.42	0.81	1718.45	4.3	1719.85
11/28/21	0.07	1723.42	0.97	1707.62	0.00	1719.62	0.00	1725.27	0.62	1722.87	0.57	1709.60	3.7	1708.80	0.96	1721.41	0.81	1718.43	4.3	1719.83
11/29/21	0.07	1723.53	0.97	1707.78	0.00	1719.63	0.00	1725.28	0.62	1722.82	0.57	1709.61	3.7	1708.80	0.97	1721.41	0.81	1718.42	4.3	1719.83
11/30/21 ¹	0.08	1723.36	0.97	1707.67	0.00	1719.63	0.00	1725.31	0.63	1722.82	0.56	1709.81	3.7	1708.88	1.0	1721.39	0.79	1718.53	4.3	1719.86
Monthly Average	0.08	1723.16	0.97	1707.62	0.00	1719.55	0.00	1725.32	0.69	1722.47	0.51	1709.97	3.7	1708.86	1.1	1721.39	0.82	1718.42	4.3	1719.97
Analytical ¹	Conc (mg/L)	Date	Conc (mg/L)	Date	Conc (mg/L)	Date	Conc (mg/L)	Date	Conc (mg/L)	Date	Conc (mg/L)	Date	Conc (mg/L)	Date	Conc (mg/L)	Date	Conc (mg/L)	Date	Conc (mg/L)	Date
Perchlorate	77	11/4/2021	27	11/4/2021	48	11/4/2021	200	11/17/2021	190	11/17/2021	290	11/4/2021	480	11/4/2021	390	11/4/2021	340	11/4/2021	450	11/4/2021
Hexavalent Chromium	0.46	11/4/2021	0.056	11/4/2021	0.012	11/4/2021	1.60	11/17/2021	1.5	11/17/2021	0.22	11/4/2021	2.6	11/4/2021	3.7	11/4/2021	5.4	11/4/2021	11	11/4/2021
Total Chromium	0.74	11/4/2021	0.054	11/4/2021	0.049	11/4/2021	1.90	11/17/2021	2.6	11/17/2021	0.22	11/4/2021	2.8	11/4/2021	4.3	11/4/2021	5.7	11/4/2021	11	11/4/2021

Notes:
 Flow reported as gpm is a daily average calculated from the totalizer reading.
 B = Compound was found in the blank and sample.
 1: Analytical results are reported from Eurofins TestAmerica.
 2: On 11/09, 11/16, and 11/21, IWF offline intermittently due to maintenance.
 3: On 11/30, the data server was offline; average flows and water levels are presented for this day.
 4: Duplicates taken on 11/04 for well I-B; average of both values is presented and used for calculations.

Table 3 - Interceptor Well Field (IWF) Operational Metrics

Nevada Environmental Response Trust Groundwater Extraction and Treatment System Enhanced Operational Metrics																				
Date	I-G		I-H		I-I		I-J		I-K		I-L		I-M		I-N		I-O		I-P	
	Flow (gpm)	Water Elevation (ft amsl)	Flow (gpm)	Water Elevation (ft amsl)	Flow (gpm)	Water Elevation (ft amsl)	Flow (gpm)	Water Elevation (ft amsl)	Flow (gpm)	Water Elevation (ft amsl)	Flow (gpm)	Water Elevation (ft amsl)	Flow (gpm)	Water Elevation (ft amsl)	Flow (gpm)	Water Elevation (ft amsl)	Flow (gpm)	Water Elevation (ft amsl)	Flow (gpm)	Water Elevation (ft amsl)
11/01/21	0.20	1722.39	0.7	1722.41	4.2	1723.14	6.3	1723.05	0.87	1721.19	0.85	1718.52	1.7	1721.30	3.5	1719.31	0.60	1723.14	1.8	1723.13
11/02/21	0.20	1722.38	0.71	1722.40	4.2	1723.13	6.3	1723.00	0.88	1721.16	0.84	1718.60	1.7	1721.28	3.5	1719.29	0.60	1723.13	1.8	1723.13
11/03/21	0.20	1722.39	0.70	1722.41	4.2	1723.13	6.3	1722.99	0.90	1721.13	0.84	1718.63	1.7	1721.27	3.5	1719.28	0.60	1723.14	1.8	1723.14
11/04/21	0.20	1722.40	0.68	1722.43	4.2	1723.14	6.3	1723.06	0.90	1721.13	0.80	1718.88	1.7	1721.26	3.5	1719.28	0.60	1723.16	1.8	1723.16
11/05/21	0.20	1722.40	0.69	1722.44	4.2	1723.14	6.3	1723.06	0.90	1721.13	0.76	1719.19	1.7	1721.25	3.5	1719.28	0.61	1723.16	1.8	1723.16
11/06/21	0.20	1722.41	0.71	1722.47	4.2	1723.16	6.3	1723.08	0.89	1721.15	0.75	1719.25	1.7	1721.25	3.5	1719.26	0.60	1723.19	1.8	1723.19
11/07/21	0.20	1722.41	0.7	1722.48	4.1	1723.16	6.3	1723.09	0.89	1721.15	0.75	1719.27	1.7	1721.24	3.7	1719.16	0.61	1723.19	1.8	1723.19
11/08/21	0.19	1722.40	0.75	1722.46	4.2	1723.14	6.3	1723.04	0.88	1721.15	0.76	1719.19	1.7	1721.22	3.7	1719.13	0.60	1723.15	1.8	1723.15
11/09/21 ¹	0.17	1722.43	0.69	1722.54	4.1	1723.17	6.1	1723.27	0.84	1721.18	0.67	1719.84	1.7	1721.26	3.7	1719.17	0.58	1723.13	1.7	1723.14
11/10/21	0.16	1722.44	0.69	1722.52	4.2	1723.12	6.3	1723.08	0.86	1721.15	0.66	1720.24	1.7	1721.23	3.8	1719.09	0.59	1723.10	1.8	1723.10
11/11/21	0.16	1722.43	0.68	1722.55	4.2	1723.12	6.3	1723.03	0.9	1721.15	0.66	1720.35	1.7	1721.21	3.7	1719.07	0.59	1723.15	1.8	1723.15
11/12/21	0.16	1722.43	0.67	1722.57	4.2	1723.12	6.3	1723.02	0.86	1721.15	0.66	1720.43	1.7	1721.20	3.7	1719.06	0.58	1723.16	1.8	1723.16
11/13/21	0.16	1722.43	0.65	1722.56	4.2	1723.12	6.3	1723.03	0.85	1721.15	0.66	1720.50	1.7	1721.20	3.7	1719.04	0.58	1723.14	1.8	1723.14
11/14/21	0.16	1722.43	0.67	1722.55	4.2	1723.12	6.3	1723.00	0.85	1721.15	0.65	1720.55	1.7	1721.20	3.7	1719.04	0.58	1723.14	1.8	1723.14
11/15/21	0.16	1722.44	0.68	1722.57	4.2	1723.12	6.3	1723.02	0.85	1721.16	0.66	1720.52	1.7	1721.19	3.7	1719.03	0.58	1723.14	1.8	1723.15
11/16/21 ¹	0.16	1722.46	0.67	1722.60	4.2	1723.15	6.2	1723.15	0.85	1721.18	0.49	1721.00	1.7	1721.21	3.7	1719.04	0.57	1723.16	1.7	1723.17
11/17/21	0.22	1722.36	0.67	1722.58	4.3	1723.11	6.3	1723.05	0.84	1721.15	0.34	1721.53	1.7	1721.19	3.8	1719.01	0.58	1723.14	1.8	1723.12
11/18/21	0.25	1722.28	0.67	1722.56	4.3	1723.10	6.3	1723.03	0.85	1721.14	0.34	1721.57	1.7	1721.18	3.8	1719.00	0.57	1723.12	1.8	1723.10
11/19/21	0.25	1722.28	0.67	1722.56	4.3	1723.11	6.3	1723.05	0.85	1721.15	0.35	1721.59	1.7	1721.18	3.7	1718.99	0.57	1723.13	1.8	1723.12
11/20/21	0.25	1722.27	0.67	1722.55	4.3	1723.10	6.3	1723.02	0.85	1721.14	0.35	1721.60	1.7	1721.16	3.8	1718.96	0.57	1723.12	1.8	1723.11
11/21/21 ¹	0.30	1722.15	0.64	1722.59	4.2	1723.12	6.1	1723.20	0.87	1721.10	0.28	1721.71	1.7	1721.21	3.7	1719.01	0.54	1723.12	1.7	1723.13
11/22/21	0.46	1721.83	0.65	1722.62	4.3	1723.12	6.3	1723.07	1.0	1720.97	0.21	1721.83	1.7	1721.22	3.7	1719.01	0.55	1723.15	1.7	1723.15
11/23/21	0.44	1721.79	0.64	1722.64	4.3	1723.13	6.3	1723.07	1.0	1720.97	0.22	1721.81	1.7	1721.22	3.7	1718.99	0.55	1723.17	1.8	1723.16
11/24/21	0.42	1721.75	0.64	1722.60	4.3	1723.09	6.3	1722.88	1.0	1720.93	0.22	1721.78	1.7	1721.17	3.7	1718.95	0.55	1723.13	1.8	1723.13
11/25/21	0.37	1721.88	0.60	1722.64	4.2	1723.11	6.1	1723.11	0.97	1720.95	0.21	1721.81	1.6	1721.22	3.5	1719.04	0.54	1723.12	1.7	1723.14
11/26/21	0.34	1721.97	0.59	1722.70	4.3	1723.11	6.3	1723.04	0.99	1720.97	0.25	1721.79	1.7	1721.23	3.5	1719.07	0.56	1723.15	1.7	1723.16
11/27/21	0.34	1721.96	0.59	1722.70	4.3	1723.10	6.3	1722.94	0.98	1720.96	0.25	1721.78	1.7	1721.21	3.5	1719.04	0.55	1723.14	1.7	1723.14
11/28/21	0.34	1721.94	0.59	1722.68	4.3	1723.08	6.3	1722.86	0.98	1720.95	0.27	1721.76	1.7	1721.19	3.5	1719.02	0.55	1723.12	1.7	1723.12
11/29/21	0.33	1721.96	0.59	1722.68	4.2	1723.08	6.3	1722.88	0.98	1720.95	0.27	1721.75	1.7	1721.20	3.5	1719.02	0.55	1723.12	1.8	1723.12
11/30/21 ¹	0.37	1721.89	0.61	1722.66	4.3	1723.10	6.3	1722.97	0.99	1720.95	0.24	1721.78	1.7	1721.21	3.6	1719.02	0.55	1723.13	1.7	1723.14
Monthly Average	0.25	1722.23	0.7	1722.56	4.2	1723.12	6.3	1723.04	0.91	1721.09	0.51	1720.63	1.7	1721.22	3.6	1719.09	0.57	1723.14	1.8	1723.14
Analytical ¹	Conc (mg/L)	Date	Conc (mg/L)	Date	Conc (mg/L)	Date	Conc (mg/L)	Date	Conc (mg/L)	Date	Conc (mg/L)	Date	Conc (mg/L)	Date	Conc (mg/L)	Date	Conc (mg/L)	Date	Conc (mg/L)	Date
Perchlorate	450	11/10/2021	550	11/10/2021	480	11/17/2021	210	11/17/2021	250	11/17/2021	190	11/4/2021	310	11/4/2021	360	11/4/2021	700	11/10/2021	700	11/10/2021
Hexavalent Chromium	17	11/10/2021	15	11/10/2021	5.3	11/17/2021	2.8	11/17/2021	2.0	11/17/2021	0.95	11/4/2021	5.3	11/4/2021	6.0	11/4/2021	12	11/10/2021	14	11/10/2021
Total Chromium	14	11/10/2021	12 B	11/10/2021	6.7	11/17/2021	3.5	11/17/2021	2.6	11/17/2021	1.1	11/4/2021	5.2	11/4/2021	6.0	11/4/2021	9.2 B	11/10/2021	11 B	11/10/2021

Notes:
 Flow reported as gpm is a daily average calculated from the totalizer reading.
 B = Compound was found in the blank and sample.
 1: Analytical results are reported from Eurofins TestAmerica.
 2: On 11/09, 11/16, and 11/21, IWF offline intermittently due to maintenance.
 3: On 11/30, the data server was offline; average flows and water levels are presented for this day.

Nevada Environmental Response Trust Groundwater Extraction and Treatment System Enhanced Operational Metrics																				
Date	I-Q		I-R		I-S		I-T		I-U		I-V		I-W		I-X		I-Y		I-Z	
	Flow (gpm)	Water Elevation (ft amsl)	Flow (gpm)	Water Elevation (ft amsl)	Flow (gpm)	Water Elevation (ft amsl)	Flow (gpm)	Water Elevation (ft amsl)	Flow (gpm)	Water Elevation (ft amsl)	Flow (gpm)	Water Elevation (ft amsl)	Flow (gpm)	Water Elevation (ft amsl)	Flow (gpm)	Water Elevation (ft amsl)	Flow (gpm)	Water Elevation (ft amsl)	Flow (gpm)	Water Elevation (ft amsl)
11/01/21	0.30	1718.73	1.2	1717.63	2.2	1705.00	0.30	1720.54	0.49	1718.78	4.4	1722.39	0.44	1723.54	3.7	1716.41	1.5	1700.29	9.0	1715.14
11/02/21	0.29	1718.76	1.2	1717.50	2.1	1705.00	0.30	1720.52	0.49	1718.73	4.4	1722.38	0.34	1723.61	3.7	1716.40	1.5	1700.54	9.0	1715.06
11/03/21	0.28	1718.78	1.2	1717.35	2.1	1705.00	0.30	1720.54	0.48	1718.85	4.4	1722.38	0.31	1723.60	3.7	1716.38	1.5	1700.34	9.0	1715.06
11/04/21	0.28	1718.78	1.2	1717.32	2.1	1705.00	0.30	1720.56	0.46	1719.21	4.4	1722.40	0.38	1723.65	3.7	1716.36	1.5	1700.29	9.0	1715.11
11/05/21	0.28	1718.79	1.2	1717.47	2.1	1705.00	0.30	1720.58	0.44	1719.28	4.4	1722.40	0.36	1723.71	3.7	1716.34	1.5	1700.31	9.0	1715.09
11/06/21	0.28	1718.81	1.2	1717.62	2.1	1705.00	0.30	1720.60	0.45	1719.33	4.4	1722.43	0.22	1723.79	3.7	1716.34	1.5	1700.25	9.0	1715.12
11/07/21	0.28	1718.82	1.2	1717.62	2.1	1705.00	0.30	1720.61	0.45	1719.35	4.4	1722.43	0.32	1723.66	3.7	1716.30	1.5	1700.37	8.9	1715.14
11/08/21	0.27	1718.81	1.2	1717.55	2.1	1705.00	0.30	1720.60	0.45	1719.40	4.4	1722.40	0.53	1723.51	3.7	1716.26	1.5	1699.84	9.0	1715.06
11/09/21 ¹	0.33	1718.52	1.1	1719.03	1.8	1714.78	0.27	1720.73	0.42	1719.58	4.3	1722.44	0.67	1723.21	3.6	1716.46	1.5	1699.74	8.8	1715.51
11/10/21	0.37	1718.26	0.98	1719.79	1.8	1719.13	0.26	1720.76	0.44	1719.29	4.4	1722.35	0.53	1723.23	3.7	1716.33	1.6	1700.08	9.0	1715.13
11/11/21	0.36	1718.33	0.94	1719.97	1.7	1719.45	0.26	1720.74	0.45	1719.29	4.4	1722.37	0.23	1723.71	3.7	1716.29	1.6	1700.06	9.0	1715.05
11/12/21	0.33	1718.44	0.88	1720.21	1.7	1719.63	0.27	1720.73	0.43	1719.30	4.4	1722.38	0.37	1723.65	3.7	1716.25	1.6	1700.12	9.0	1715.06
11/13/21	0.33	1718.47	0.88	1720.22	1.8	1719.70	0.27	1720.73	0.43	1719.34	4.4	1722.37	0.61	1723.54	3.7	1716.22	1.6	1700.10	9.0	1715.06
11/14/21	0.33	1718.48	0.88	1720.24	1.8	1719.79	0.27	1720.73	0.43	1719.32	4.4	1722.36	0.61	1723.53	3.7	1716.19	1.6	1700.11	9.0	1715.01
11/15/21	0.32	1718.49	0.89	1720.21	1.8	1719.88	0.27	1720.74	0.43	1719.33	4.4	1722.37	0.62	1723.53	3.7	1716.18	1.6	1700.21	9.0	1715.03
11/16/21 ¹	0.24	1718.86	0.90	1720.17	1.7	1720.15	0.26	1720.79	0.46	1720.20	4.4	1722.41	0.60	1723.57	3.7	1716.24	1.6	1700.05	9.0	1715.24
11/17/21	0.19	1719.14	0.90	1719.93	1.7	1720.50	0.25	1720.79	0.47	1719.14	4.4	1722.37	0.60	1723.54	3.7	1716.19	1.6	1700.18	9.0	1715.03
11/18/21	0.19	1719.13	0.88	1719.94	1.7	1720.58	0.25	1720.78	0.43	1719.45	4.4	1722.34	0.60	1723.52	3.7	1716.17	1.6	1700.13	9.0	1714.98
11/19/21	0.19	1719.13	0.88	1719.94	1.7	1720.62	0.25	1720.79	0.44	1719.32	4.4	1722.35	0.60	1723.53	3.7	1716.15	1.6	1700.07	9.0	1714.99
11/20/21	0.19	1719.12	0.88	1720.16	1.7	1720.66	0.25	1720.77	0.45	1719.21	4.4	1722.34	0.60	1723.52	3.7	1716.13	1.6	1700.10	9.0	1714.92
11/21/21 ¹	0.23	1718.89	0.80	1721.30	1.7	1720.70	0.24	1720.80	0.44	1719.28	4.3	1722.38	0.55	1723.55	3.6	1716.31	1.6	1700.37	8.8	1715.37
11/22/21	0.29	1718.61	0.82	1721.97	1.8	1720.69	0.24	1720.79	0.47	1719.09	4.4	1722.37	0.54	1723.59	3.7	1716.22	1.7	1700.25	9.0	1715.19
11/23/21	0.27	1718.67	0.88	1721.70	1.8	1720.68	0.25	1720.79	0.50	1718.65	4.4	1722.39	0.54	1723.61	3.7	1716.18	1.7	1700.17	9.0	1715.16
11/24/21	0.27	1718.62	0.86	1721.72	1.8	1720.65	0.25	1720.74	0.48	1718.79	4.4	1722.34	0.54	1723.57	3.7	1716.11	1.7	1700.32	9.0	1714.91
11/25/21	0.28	1718.53	0.81	1721.26	1.7	1720.74	0.23	1720.76	0.47	1718.85	4.2	1722.37	0.53	1723.57	3.6	1716.31	1.7	1700.29	8.7	1715.43
11/26/21	0.33	1718.30	0.83	1719.95	1.7	1720.79	0.24	1720.77	0.49	1718.73	4.4	1722.37	0.56	1723.58	3.7	1716.22	1.7	1700.07	9.0	1715.22
11/27/21	0.32	1718.34	0.84	1719.89	1.7	1720.78	0.24	1720.76	0.49	1718.70	4.4	1722.35	0.56	1723.57	3.7	1716.16	1.7	1700.09	9.0	1715.04
11/28/21	0.32	1718.33	0.8	1719.98	1.7	1720.79	0.24	1720.74	0.48	1718.69	4.4	1722.32	0.56	1723.55	3.7	1716.13	1.7	1699.84	9.0	1714.91
11/29/21	0.32	1718.33	0.84	1720.00	1.7	1720.79	0.24	1720.75	0.47	1718.94	4.4	1722.32	0.56	1723.52	3.7	1716.12	1.7	1700.08	9.0	1714.91
11/30/21 ¹	0.30	1718.45	0.84	1720.64	1.7	1720.74	0.24	1720.76	0.48	1718.76	4.4	1722.35	0.55	1723.57	3.7	1716.18	1.7	1700.12	9.0	1715.08
Monthly Average	0.29	1718.66	0.97	1719.61	1.8	1716.07	0.26	1720.71	0.46	1719.11	4.4	1722.37	0.50	1723.56	3.7	1716.25	1.6	1700.16	9.0	1715.10
Analytical ¹	Conc (mg/L)	Date	Conc (mg/L)	Date	Conc (mg/L)	Date	Conc (mg/L)	Date	Conc (mg/L)	Date	Conc (mg/L)	Date	Conc (mg/L)	Date	Conc (mg/L)	Date	Conc (mg/L)	Date	Conc (mg/L)	Date
Perchlorate	590	11/10/2021	640	11/4/2021	230	11/4/2021	770	11/10/2021	760	11/10/2021	510	11/17/2021	550	11/10/2021	490	11/4/2021	270	11/4/2021	220	11/17/2021
Hexavalent Chromium	13	11/10/2021	0.71	11/4/2021	1.3	11/4/2021	16	11/10/2021	15	11/10/2021	5.7	11/17/2021	12	11/10/2021	8.7	11/4/2021	0.99	11/4/2021	9.1	11/17/2021
Total Chromium	14 B	11/10/2021	0.78	11/4/2021	1.4	11/4/2021	14 B	11/10/2021	14 B	11/10/2021	6.9	11/17/2021	9.6 B	11/10/2021	8.6	11/4/2021	1.0	11/4/2021	5.5	11/17/2021

Notes:

Flow reported as gpm is a daily average calculated from the totalizer reading.

B = Compound was found in the blank and sample.

1: Analytical results are reported from Eurofins TestAmerica.

2: On 11/09, 11/16, and 11/21, IWF offline intermittently due to maintenance.

3: On 11/30, the data server was offline; average flows and water levels are presented for this day.

5: On 11/02 and 11/12, I-W offline intermittently due to maintenance.

Table 4 - Treatment Plant Operational Metrics

Nevada Environmental Response Trust Groundwater Extraction and Treatment System Enhanced Operational Metrics																
Date	LS #2	GWTP Effluent ¹				GW-11 Influent ¹				FBR Plant Influent ¹						
	Flow (gpm)	Flow ² (gpm)	TA - Cr (TR) (mg/L)	TA - Cr (VI) (mg/L)	TA - ClO ₄ (mg/L)	Flow (gpm)	TA - Cr (TR) (mg/L)	TA - Cr (VI) (mg/L)	TA - ClO ₄ (mg/L)	Flow (gpm)	TA - ClO ₄ (mg/L)	ETI - ClO ₄ (mg/L)	TA - ClO ₃ (mg/L)	TA - NO ₃ - N (mg/L)	TA - Cr (TR) (mg/L)	TA - Cr (VI) (mg/L)
11/01/21	864	75				0.00				938		57	120			0.018
11/02/21	864	74				0.00				938		51				
11/03/21	872	70	0.29	ND	450	0.00				942		57				
11/04/21	864	71				0.90	0.18	0.050	65	935		57				
11/05/21	863	70				0.00				933		59				
11/06/21	863	70				0.00				933	40	58				
11/07/21	863	77				0.00				940		60				
11/08/21	870	73				0.00				943		59		11	0.020	0.019
11/09/21	862	70				.191				932		50				
11/10/21	797	70	0.32 B	ND	190	0.00				867		62				
11/11/21	785	69				0.00				854		61				
11/12/21	786	69				0.00				855		60				
11/13/21	787	66				0.01				853	44	60				
11/14/21	787	69				0.01				857		55				
11/15/21	790	61				0.01				851		50		10	0.015	0.014
11/16/21	790	62				0.00				852		55				
11/17/21	789	64	0.13	ND	400	0.02				853		54				
11/18/21	790	64				0.03				853		61				
11/19/21	790	64				0.02				854		62				
11/20/21	790	60				0.02				851	57	62				
11/21/21	791	61				0.02				853		56				
11/22/21	794	64	0.16	ND	400	0.03				857		57		9.9	0.021	0.020
11/23/21	792	63				0.03				855		59				
11/24/21	790	66				0.04				856		51				
11/25/21	792	62				0.05				853		59				
11/26/21	792	67				0.06				860		57				
11/27/21	792	62				0.05				854	60	58				
11/28/21	792	60				0.04				852		58				
11/29/21	792	60				0.04				852		59		10	0.007 J	0.009
11/30/21		59				0.00				30		30				
Monthly Average ²	814	66	0.06	ND	282	6.4	0.180	0.050	65	880	49	57	120	10.2	0.016	0.017

Notes:
 Flow reported as gpm is a daily average calculated from the totalizer reading. The only exceptions are the instantaneous flow readings recorded for the 1st and 2nd Stage FBR flows
 B = Compound was found in the blank and sample.
 ND = Not detected above laboratory method detection limit (ClO₄ = 0.5 ug/L; ClO₃ = 10 ug/L; NO₃-N = 0.055 mg/L, Cr(VI) = 0.25 ug/L).
 1: ETI = Envirogen internal process control data, TA = Eurofins TestAmerica data
 2: All average concentrations reported are monthly flow weighted averages.
 3: On 11/09, GWTP plant down due to maintenance.

Table 4 - Treatment Plant Operational Metrics

Date	1st Stage FBR ⁴			2nd Stage FBR ⁴			FBR Plant Effluent							
	Flow (gpm)	pH (s.u.)	ORP (mV)	Flow (gpm)	pH (s.u.)	ORP (mV)	Flow ⁵ (gpm)	TA - ClO ₂ (mg/L)	ETI - ClO ₄ (mg/L)	TA - ClO ₃ (mg/L)	TA - Cr (TR) (mg/L)	TA - Cr (VI) (mg/L)	TA - NO ₃ - N (mg/L)	ETI - Turbidity (NTU)
11/01/21	954	6.4	-335	720	6.4	-396	974			0.032 J	0.0019 J	ND	0.019 J	18
11/02/21	970	6.3	-284	969	6.3	-388	973							18
11/03/21	928	6.6	-258	904	6.3	-381	946							12
11/04/21	977	6.5	-276	953	6.3	-403	927							16
11/05/21	981	6.5	-358	938	6.3	-413	966							16
11/06/21	980	6.5	-383	773	6.4	-418	969	ND						14
11/07/21	984	6.5	-385	836	6.4	-417	967							19
11/08/21	705	6.6	-391	696	6.7	-400	848				ND			20
11/09/21	960	6.5	-374	813	6.3	-381	492					ND	0.024 J	8
11/10/21	921	6.5	-331	655	6.3	-404	901							8
11/11/21	867	6.3	-129	585	6.2	-318	890							13
11/12/21	884	6.4	-291	699	6.2	-345	863							17
11/13/21	879	6.4	-324	935	6.2	-369	891	ND						12
11/14/21	876	6.4	-351	878	6.3	-394	900							17
11/15/21	891	6.4	-366	892	6.3	-399	915				ND	ND	0.031 J	18
11/16/21	904	6.3	-296	859	6.3	-342	906							29
11/17/21	945	6.3	-268	779	6.3	-381	910							25
11/18/21	892	6.3	-291	849	6.3	-401	907							26
11/19/21	943	6.3	-340	858	6.3	-403	797							25
11/20/21	923	6.3	-343	973	6.4	-402	791	0.001 J						61
11/21/21	922	6.3	-327	526	6.3	-401	875							24
11/22/21	922	6.4	-350	702	6.3	-402	893				0.0017 J	ND	0.085	28
11/23/21	923	6.3	-335	878	6.3	-337	892							25
11/24/21	971	6.3	-332	349	6.3	-349	903							29
11/25/21	955	6.4	-351	792	6.3	-390	924							26
11/26/21	938	6.4	-379	275	6.3	-399	917							31
11/27/21	943	6.4	-388	804	6.4	-310	900	ND						24
11/28/21	954	6.4	-393	997	6.4	-308	915							40
11/29/21	927	6.3	-375	828	6.3	-409				0.0031 J	ND		0.048 J	40
11/30/21	987	6.2	-340	872	6.1	-400								18
Monthly Average ²	927	6.4	-332	786	6.3	-382	891	0.000	ND	0.032	0.0010	ND	0.042	22

Notes:

Flow reported as gpm is a daily average calculated from the totalizer reading. The only exceptions are the instantaneous flow readings recorded for the 1st and 2nd Stage FBR flows

ND = Not detected above laboratory method detection limit (ClO₂ = 0.5 ug/L; ClO₃ = 10 ug/L; NO₃-N = 0.055 mg/L, Cr(VI) = 0.25 ug/L).

J = Result is less than the reporting limit but greater than or equal to the method detection limit and the concentration is an approximate value

1: ETI = Envirogen internal process control data, TA = Eurofins TestAmerica data

2: All average concentrations reported are monthly flow weighted averages.

4: For 1st and 2nd stage FBRs, flow measurements are collected from the influent lines and pH and ORP samples are collected from the recycle line:

5: FBR Plant Effluent represents effluent discharged to Las Vegas Wash. While this may represent the entirety of the FBR Plant effluent, any diversions to GW-11 are subtracted from the original effluent flow

GW-11 Level Monitoring ¹				
Date	Field Measurement (ft)	Volume (MG)		
11/16/2021	31.7	34.4		
11/30/2021	29.9	36.8		

GW-11 Leak Detection Monitoring				
Date	Amount Pumped ² (gallons)			
	NW Corner	NE Corner	SW Corner	SE Corner
11/17/2021	0	0	1,023.4	0
11/30/2021	0	0	540.0	0

GW-11 Composite Sample ³		
Analytes	Concentration	Units
Perchlorate	1.40	mg/L
Chlorate	3.70	mg/L
Ammonia as N	0.088	mg/L
Total Phosphorus	0.71	mg/L
Total Dissolved Solids (TDS)	11,000	mg/L
Total Suspended Solids (TSS)	71 D	mg/L
pH	8.5	s.u.
Calcium	570	mg/L
Iron	0.30	mg/L
Chromium (total)	0.0420	mg/L
Chromium VI	ND	mg/L
Chloride	5,100	mg/L
Nitrate as N	0.410	mg/L
Sulfate	4,200	mg/L

Notes:

B = Compound was found in the blank and sample.

J = Result is less than the reporting limit but greater than or equal to the method detection limit and the concentration is an approximate value.

ND = Not detected above laboratory method detection limit (NH₃-N= 0.1 mg/L; Total P = 0.025 ug/L; Cr(VI) = 0.25 ug/L).

- 1: A transducer installed along the eastern berm provides water pressure measurements that are correlated to elevations for calculation of water depths. Results from a December 2018 bathymetric survey of the pond will be used to identify adjustment to the procedure, if necessary.
- 2: Pumping occurs over three consecutive days. The total amount pumped over the three day period is listed with the last day pumping occurred.
- 3: GW-11 Corner Composite Sample is collected quarterly, most recent sampling results are presented. Sampled on: November 16, 2021

Nevada Environmental Response Trust Groundwater Extraction and Treatment System Enhanced Operational Metrics						
Date	Flow ¹ (gpm)	FBR Influent Concentration			Influent Function Load ³ (lbs/day)	6 Month Rolling Average (lbs/day)
		ClO ₄ ² (mg/L)	NO ₃ as N (mg/L)	ClO ₃ (mg/L)		
Dec 2020	1,027	59	9	130	507	480
Jan 2021	1,047	54	9	110	454	465
Feb 2021	1,023	61	8.3	110	457	465
March 2021	1,012	56	7	120	447	467
April 2021	1,027	55	6	110	420	460
May 2021	1,031	58	8	120	476	456
June 2021	1,027	58	8	120	470	454
July 2021	1,043	62	8	120	487	460
Aug 2021	1,063	62	9	120	502	467
Sep 2021	954	62	11	130	492	475
Oct 2021	924	66	11	120	464	473
Nov 2021	880	49	10	120	406	471

Notes:

Concentrations and flow are presented as monthly average.

1: Flow used in loading calculation is average monthly FBR influent flow.

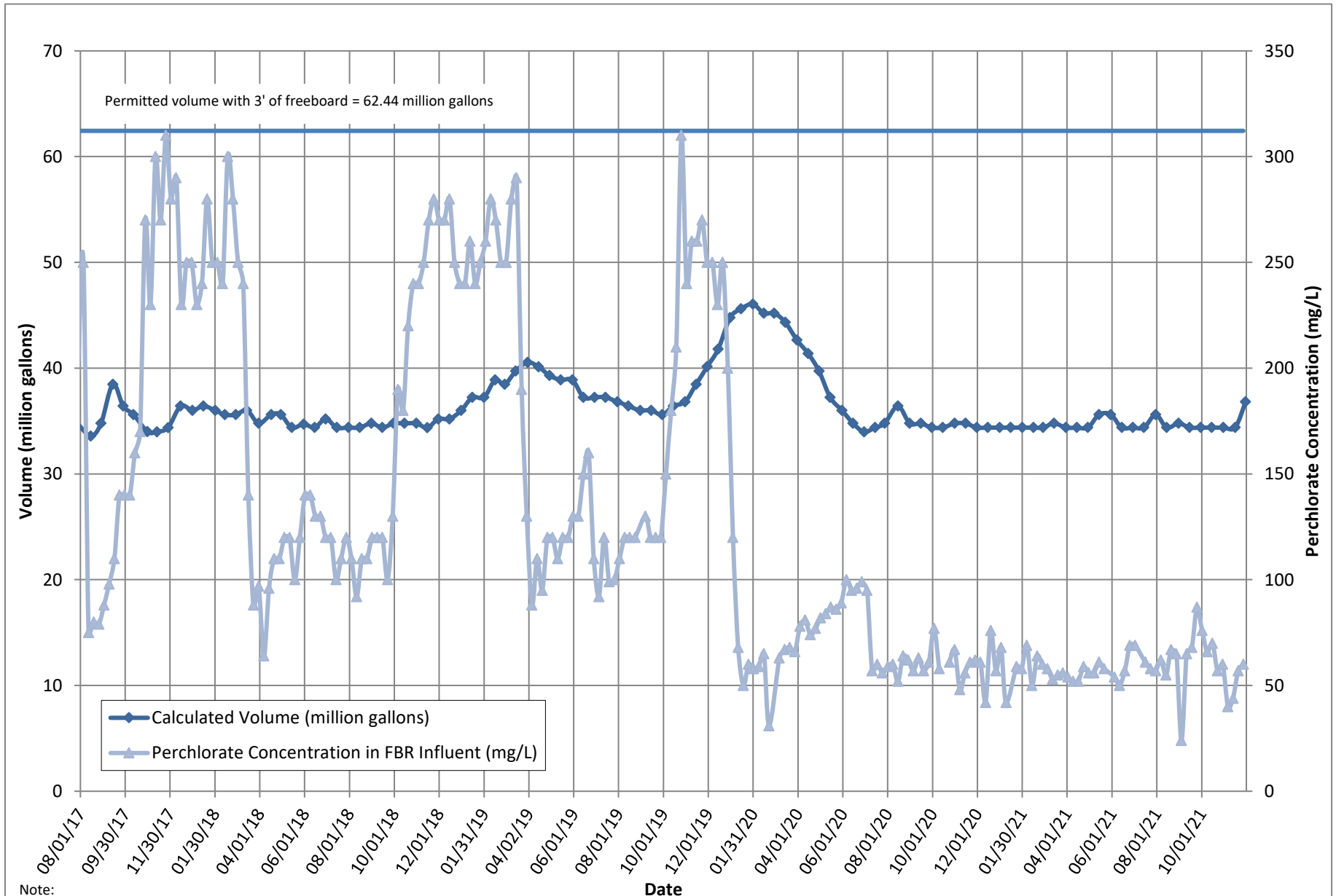
2: The AP-5 wash water feed rate was increased on October 1, 2019 in accordance with the higher seasonal ammonia permit limits beginning October 1. The AP-5 wash water feed rate was decreased in March 2020 to prepare for the lower seasonal ammonia permit limits beginning April 1. AP-5 sediment mixing and solids washing activities were completed on January 4, 2020. AP-5 tank processing was completed on 7/15/20.

3: FBR loading calculated as $[(0.9 \cdot \text{NO}_3 \text{ as N} + 0.17 \cdot \text{ClO}_3 + 0.18 \cdot \text{ClO}_4) \cdot \text{Flow} \cdot 1440 / 1000000 \cdot 8.34]$.

Nevada Environmental Response Trust Groundwater Extraction and Treatment System Enhanced Operational Metrics																
Date	E1-1		E1-2		E1-3		E2-1		E2-2		E2-3		E2-4		E2-5	
	Flow (gpm)	Water Elevation (ft amsl)	Flow (gpm)	Water Elevation (ft amsl)	Flow (gpm)	Water Elevation (ft amsl)	Flow (gpm)	Water Elevation (ft amsl)	Flow (gpm)	Water Elevation (ft amsl)	Flow (gpm)	Water Elevation (ft amsl)	Flow (gpm)	Water Elevation (ft amsl)	Flow ³ (gpm)	Water Elevation (ft amsl)
11/01/21	2.6	1712.67	0.96	1712.40	0.85	1711.58	1.1	1714.82	1.1	1717.51	1.3	1717.55	1.3	1716.55	0.31	1717.42
11/02/21	2.6	1712.59	0.93	1712.36	0.89	1711.48	1.1	1714.71	0.95	1717.34	1.1	1717.64	1.4	1717.17	0.37	1717.30
11/03/21	2.6	1710.52	0.89	1711.69	0.86	1710.72	1.1	1714.24	0.95	1718.97	1.1	1718.75	1.4	1715.02	0.37	1716.16
11/04/21	2.6	1710.48	0.89	1711.65	0.88	1711.50	1.1	1714.24	0.87	1719.47	1.2	1717.85	1.4	1715.07	0.33	1718.00
11/05/21	2.6	1711.69	0.84	1710.54	0.88	1711.08	1.1	1715.01	1.0	1718.92	1.2	1717.97	1.4	1715.49	0.21	1719.38
11/06/21	2.6	1711.62	0.87	1710.85	0.88	1711.14	1.1	1714.86	1.0	1719.00	1.1	1719.63	1.4	1715.70	0.37	1718.02
11/07/21	2.7	1711.45	0.91	1712.08	0.91	1712.34	1.2	1713.91	1.2	1717.33	1.4	1716.94	1.6	1715.78	0.28	1719.00
11/08/21	2.5	1711.67	0.91	1712.05	0.85	1711.72	1.1	1712.22	1.1	1716.93	1.3	1716.13	1.1	1714.75	0.37	1716.18
11/09/21	2.6	1711.44	0.89	1711.96	0.86	1711.49	1.1	1712.81	1.1	1716.91	1.3	1717.24	1.3	1714.83	0.32	1716.80
11/10/21	2.6	1711.42	0.92	1710.84	0.88	1710.67	1.1	1713.20	1.0	1717.64	1.3	1716.55	1.4	1715.06	0.31	1717.74
11/11/21	2.6	1711.36	0.92	1710.20	0.88	1710.39	1.1	1712.82	1.2	1717.56	1.3	1716.51	1.4	1715.05	0.31	1717.64
11/12/21	2.7	1711.21	0.93	1710.09	0.86	1710.32	1.1	1711.78	1.1	1716.90	1.2	1715.93	1.3	1714.64	0.28	1718.77
11/13/21	2.5	1711.31	0.86	1709.93	0.85	1710.43	1.1	1712.52	1.1	1716.64	1.2	1717.20	1.3	1714.68	0.33	1717.25
11/14/21	2.6	1711.11	1.1	1710.06	0.87	1710.37	1.1	1712.75	1.1	1716.86	1.2	1717.83	1.3	1714.66	0.36	1717.50
11/15/21	2.6	1711.02	0.7	1710.14	0.87	1709.65	1.1	1713.77	1.0	1717.34	1.2	1717.29	1.3	1715.41	0.32	1716.62
11/16/21 ²	2.5	1710.85	0.86	1709.90	0.82	1710.32	1.1	1716.12	1.1	1716.33	1.1	1717.84	1.2	1715.46	0.32	1716.76
11/17/21 ²	2.6	1712.43	0.94	1710.41	0.76	1710.86	0.92	1714.33	0.75	1720.92	0.78	1721.96	1.1	1715.99	0.48	1709.38
11/18/21	2.5	1714.01	0.93	1710.97	0.78	1716.02	1.2	1714.14	0.96	1719.42	0.91	1720.96	1.4	1715.26	0.54	1709.70
11/19/21	2.5	1712.97	0.94	1710.33	0.93	1713.51	0.99	1716.22	0.74	1721.70	0.73	1724.08	1.1	1718.00	0.41	1717.19
11/20/21	2.5	1713.61	0.93	1710.09	0.90	1710.33	1.2	1712.66	1.0	1718.59	0.89	1721.57	1.3	1715.31	0.45	1712.60
11/21/21 ²	2.3	1716.52	0.87	1717.06	0.82	1719.07	1.1	1717.60	1.0	1719.82	0.97	1722.97	1.3	1717.63	0.44	1720.45
11/22/21	2.6	1714.31	0.94	1714.65	0.84	1714.46	1.2	1714.91	1.1	1718.40	0.88	1722.13	1.3	1715.79	0.47	1713.30
11/23/21	2.5	1714.48	0.93	1714.65	0.82	1715.90	1.2	1713.67	1.1	1717.13	0.87	1721.23	1.3	1714.95	0.47	1712.48
11/24/21	2.5	1714.21	0.89	1713.51	0.82	1715.12	1.2	1713.82	1.1	1717.51	1.2	1719.30	1.3	1716.11	0.49	1712.20
11/25/21 ²	2.5	1713.35	0.89	1712.35	0.83	1714.24	1.1	1714.17	1.0	1717.57	1.1	1718.95	1.3	1715.90	0.51	1711.92
11/26/21	2.6	1711.51	0.88	1710.85	0.80	1714.30	1.0	1715.74	1.0	1717.42	0.85	1721.43	1.3	1716.29	0.43	1714.91
11/27/21	2.6	1711.12	0.87	1712.65	0.83	1714.47	0.99	1715.49	1.0	1717.37	1.2	1718.80	1.3	1716.60	0.42	1714.74
11/28/21	2.4	1711.28	0.91	1713.94	0.84	1714.51	0.96	1716.21	1.0	1717.90	1.4	1717.66	1.3	1716.15	0.39	1713.29
11/29/21 ²	0.49	1712.28	0.86	1711.80	0.85	1713.12	0.92	1715.72	1.0	1717.51	1.2	1717.61	1.2	1715.48	0.32	1714.00
11/30/21	0.99	1714.67	0.99	1709.84	0.86	1712.13	0.97	1715.57	1.1	1717.56	1.3	1717.39	1.4	1715.21	0.50	1714.85
Monthly Average	2.4	1712.31	0.91	1711.66	0.85	1712.44	1.1	1714.33	1.0	1718.02	1.1	1718.83	1.3	1715.67	0.38	1715.71
Analytical ¹	Conc (mg/L)	Date	Conc ¹ (mg/L)	Date	Conc (mg/L)	Date	Conc (mg/L)	Date	Conc (mg/L)	Date	Conc (mg/L)	Date	Conc (mg/L)	Date	Conc (mg/L)	Date
Perchlorate	710	11/3/2021	1,250	11/3/2021	580	11/3/2021	110	11/3/2021	420	11/3/2021	860	11/3/2021	970	11/3/2021	1,200	11/3/2021
Hexavalent Chromium	0.081	11/3/2021	0.48	11/3/2021	0.59	11/3/2021	0.025	11/3/2021	0.027	11/3/2021	0.071	11/3/2021	0.083	11/3/2021	0.180	11/3/2021
Total Chromium	0.078	11/3/2021	0.50	11/3/2021	0.64	11/3/2021	0.036	11/3/2021	0.046	11/3/2021	0.069	11/3/2021	0.079	11/3/2021	0.19	11/3/2021

Notes:
 Flow reported as gpm is a daily average calculated from the totalizer reading.
 The flow rate at individual wells is adjusted daily to maintain the water level in the wells above the pump.
 1: Analytical results are reported from Eurofins TestAmerica.
 2: On 11/16, 11/17, 11/21, 11/25, and 11/29 AP wells offline briefly for maintenance.
 3: On 11/16, E2-5 totalizer failed; averaged flows are presented for this day
 4: Duplicates taken on 11/03 for well E1-2; average of both values is presented and used for calculations.

Figure 1 - GW-11 Pond Volume and FBR Influent Perchlorate Concentration



Note:

1. Treatment of AP-5 wash water began on July 17, 2017 and was suspended on August 4, 2017 to allow Envirogen to evaluate internal process controls to meet discharge limits. Treatment of AP-5 wash water resumed on August 31, 2017. The AP-5 wash water feed rate was increased on October 1, 2019 in accordance with the higher seasonal ammonia permit limits beginning October 1. The AP-5 wash water feed rate was decreased in March 2019 to prepare for the lower seasonal ammonia permit limits beginning April 1. AP-5 tank processing was completed on 7/15/20.

Figure 2 - FBR Equivalent Loading Calculation

