

Nevada Environmental Response Trust   Groundwater Extraction and Treatment System   Enhanced Operational Metrics																			
Date	LS #1 Flow (gpm)	PC-116R (East Well)		PC-99R2/R3 (Center Well)		PC-115R (West Well)		PC-117		PC-118		PC-119		PC-120		PC-121		PC-133	
		Flow (gpm)	Water Elevation (ft amsl)	Flow (gpm)	Water Elevation (ft amsl)	Flow (gpm)	Water Elevation (ft amsl)	Flow (gpm)	Water Elevation (ft amsl)	Flow (gpm)	Water Elevation (ft amsl)	Flow (gpm)	Water Elevation (ft amsl)	Flow (gpm)	Water Elevation (ft amsl)	Flow (gpm)	Water Elevation (ft amsl)	Flow (gpm)	Water Elevation <sup>2</sup> (ft amsl)
09/01/21	398	162	1536.62	92	1540.78	130	1543.10	107	1535.96	68	1547.04	102	1548.48	50	1549.52	20	1550.68	9.8	< 1520.00
09/02/21	396	162	1536.67	92	1540.80	130	1543.16	107	1535.99	68	1547.02	102	1548.47	50	1549.51	20	1550.66	9.8	< 1520.00
09/03/21	398	162	1536.72	92	1540.84	130	1543.19	107	1535.98	68	1547.01	102	1548.45	50	1549.49	20	1550.64	9.8	< 1520.00
09/04/21	407	162	1536.68	92	1540.86	130	1543.20	107	1535.94	68	1546.99	102	1548.43	50	1549.47	20	1550.62	9.8	< 1520.00
09/05/21	406	162	1536.64	92	1540.86	130	1543.18	107	1535.91	68	1546.97	102	1548.41	50	1549.46	20	1550.61	9.8	< 1520.00
09/06/21	406	162	1536.61	92	1540.91	130	1543.17	107	1535.88	68	1546.95	102	1548.40	50	1549.44	20	1550.59	9.8	< 1520.00
09/07/21	412	162	1536.59	91	1540.97	130	1543.12	107	1535.86	68	1546.94	102	1548.39	50	1549.43	20	1550.58	9.8	< 1520.00
09/08/21	412	162	1536.56	91	1541.00	130	1543.09	107	1535.84	68	1546.92	102	1548.37	50	1549.41	20	1550.56	9.8	< 1520.00
09/09/21	415	162	1536.53	91	1541.01	130	1543.09	107	1535.81	68	1546.90	102	1548.35	50	1549.39	20	1550.54	9.8	< 1520.00
09/10/21	416	162	1536.52	91	1541.03	130	1543.09	107	1535.79	68	1546.88	102	1548.34	50	1549.38	20	1550.53	9.8	< 1520.00
09/11/21	415	162	1536.50	91	1541.04	130	1543.09	107	1535.77	68	1546.86	102	1548.33	50	1549.36	20	1550.52	9.8	< 1520.00
09/12/21	416	162	1536.48	91	1541.02	130	1543.03	107	1535.75	68	1546.85	102	1548.31	50	1549.35	20	1550.50	9.8	< 1520.00
09/13/21	416	162	1536.46	91	1541.00	130	1542.95	107	1535.73	68	1546.83	102	1548.30	50	1549.33	20	1550.49	9.7	< 1520.00
09/14/21	415	162	1536.50	91	1540.96	130	1542.99	107	1535.78	68	1546.81	102	1548.29	50	1549.32	20	1550.47	9.7	< 1520.00
09/15/21	415	162	1536.50	91	1540.89	130	1542.96	107	1535.79	68	1546.80	102	1548.27	50	1549.31	20	1550.46	9.7	< 1520.00
09/16/21	415	162	1536.47	91	1540.86	130	1542.90	107	1535.76	68	1546.78	102	1548.26	50	1549.29	20	1550.45	9.7	< 1520.00
09/17/21	412	162	1536.50	91	1540.86	130	1543.05	107	1535.72	68	1546.77	102	1548.24	50	1549.28	20	1550.43	9.7	< 1520.00
09/18/21	410	162	1536.47	91	1540.86	130	1543.00	107	1535.69	68	1546.75	102	1548.24	50	1549.27	20	1550.42	9.7	< 1520.00
09/19/21	407	162	1536.43	91	1540.83	130	1542.88	107	1535.67	68	1546.74	102	1548.23	50	1549.26	20	1550.41	9.7	< 1520.00
09/20/21	405	162	1536.40	91	1540.82	130	1543.04	107	1535.64	68	1546.72	102	1548.21	50	1549.24	20	1550.39	9.7	< 1520.00
09/21/21	406	162	1536.38	91	1540.81	130	1543.14	107	1535.61	68	1546.70	102	1548.19	50	1549.23	20	1550.38	9.7	< 1520.00
09/22/21	411	162	1536.36	91	1540.78	130	1542.96	107	1535.60	68	1546.69	102	1548.19	50	1549.23	20	1550.38	9.7	< 1520.00
09/23/21	412	162	1536.34	92	1540.73	130	1542.77	107	1535.59	68	1546.68	102	1548.18	50	1549.22	20	1550.37	9.7	< 1520.00
09/24/21	412	162	1536.32	92	1540.71	130	1542.80	107	1535.56	68	1546.66	102	1548.17	50	1549.20	20	1550.36	9.7	< 1520.00
09/25/21	410	162	1536.30	92	1540.69	130	1542.76	107	1535.54	68	1546.65	102	1548.16	50	1549.20	20	1550.35	9.7	< 1520.00
09/26/21	408	162	1536.29	92	1540.67	130	1542.70	107	1535.53	68	1546.64	102	1548.15	50	1549.18	20	1550.34	9.7	< 1520.00
09/27/21	408	161	1536.27	92	1540.65	130	1542.65	107	1535.51	68	1546.63	102	1548.14	50	1549.17	20	1550.33	9.7	< 1520.00
09/28/21	407	161	1536.25	92	1540.61	130	1542.52	107	1535.49	68	1546.61	102	1548.13	50	1549.16	20	1550.32	9.6	< 1520.00
09/29/21	414	161	1536.27	92	1540.60	130	1542.71	107	1535.50	68	1546.60	102	1548.12	50	1549.14	20	1550.30	9.6	< 1520.00
09/30/21	409	161	1536.34	92	1540.61	130	1542.80	107	1535.53	68	1546.59	102	1548.11	50	1549.14	20	1550.29	9.7	< 1520.00
Monthly Average	410	162	1536.47	92	1540.84	130	1542.97	107	1535.72	68	1546.80	102	1548.28	50	1549.31	20	1550.47	9.7	< 1520.00
Analytical <sup>1</sup>	Conc (mg/L)	Date	Conc <sup>2</sup> (mg/L)	Date	Conc (mg/L)	Date	Conc (mg/L)	Date	Conc (mg/L)	Date	Conc (mg/L)	Date	Conc (mg/L)	Date	Conc (mg/L)	Date	Conc (mg/L)	Date	
Perchlorate	17.0	9/15/2021	17.0	9/15/2021	6.0	9/15/2021	9.0	9/15/2021	1.7	9/15/2021	0.15	9/15/2021	0.0020	9/15/2021	0.00095	9/15/2021	1.1	9/15/2021	
Hexavalent Chromium	0.0068	9/15/2021	ND	9/15/2021	ND	9/15/2021	0.0074	9/15/2021	ND	9/15/2021	ND	9/15/2021	ND	9/15/2021	ND	9/15/2021	ND	9/15/2021	
Total Chromium	0.0027	J 9/15/2021	ND	9/15/2021	ND	9/15/2021	0.0035	J 9/15/2021	ND	9/15/2021	ND	9/15/2021	ND	9/15/2021	ND	9/15/2021	ND	9/15/2021	

Notes:  
 Flow reported as gpm is a daily average calculated from the totalizer reading.  
 ND = Not detected above laboratory method detection limit (Cr(TR)=2.5 ug/L, Cr(VI)=0.20 ug/L).  
 J = Result is less than the reporting limit but greater than or equal to the method detection limit and the concentration is an approximate value.  
 1: Analytical results are reported from Eurofins TestAmerica.  
 2: A "<" preceding the water elevation indicates the reported water level is below the transducer. Average monthly water elevation calculations include the transducer elevation in instances where the water level is below the transducer.  
 3: Duplicates taken on 09/15 for well PC-99R2; average of both values is presented and used for calculations.

Nevada Environmental Response Trust   Groundwater Extraction and Treatment System   Enhanced Operational Metrics																		
Date	LS #3 Flow <sup>2</sup> (gpm)	ART-1/1A		ART-2/2A		ART-3/3A		ART-4/4A		ART-9		ART-7A/7B		ART-8/8A		PC-150		
		Flow (gpm)	Water Elevation (ft amsl)	Flow (gpm)	Water Elevation (ft amsl)	Flow (gpm)	Water Elevation (ft amsl)	Flow (gpm)	Water Elevation (ft amsl)	Flow (gpm)	Water Elevation (ft amsl)	Flow (gpm)	Water Elevation (ft amsl)	Flow (gpm)	Water Elevation (ft amsl)	Flow <sup>2</sup> (gpm)	Water Elevation (ft amsl)	
09/01/21	401	42	1584.91	139	1584.78	24	1583.32	4.3	1578.83	55	1577.72	19	1584.60	170	1584.12	1.5	1579.21	
09/02/21	401	42	1584.91	139	1584.77	24	1583.32	4.2	1578.83	54	1577.93	19	1584.66	170	1584.11	1.5	1579.21	
09/03/21	401	42	1584.90	139	1584.76	24	1583.31	4.2	1578.83	54	1577.97	19	1584.71	170	1584.10	1.5	1579.21	
09/04/21	401	42	1584.89	139	1584.75	24	1583.30	4.2	1578.83	54	1577.95	19	1584.73	170	1584.09	1.5	1579.20	
09/05/21	401	42	1584.88	139	1584.74	24	1583.30	4.2	1578.84	54	1577.95	19	1584.72	170	1584.09	1.5	1579.20	
09/06/21	401	42	1584.88	139	1584.74	24	1583.30	4.2	1578.84	54	1577.94	19	1584.72	170	1584.08	1.5	1579.19	
09/07/21	401	42	1584.87	139	1584.73	24	1583.29	4.2	1578.84	54	1577.94	19	1584.68	170	1584.08	1.5	1579.19	
09/08/21	401	42	1584.86	139	1584.72	24	1583.29	4.2	1578.84	54	1577.93	19	1584.66	170	1584.07	1.5	1579.19	
09/09/21	401	42	1584.86	140	1584.71	24	1583.28	4.2	1578.84	54	1577.90	19	1584.68	170	1584.06	1.5	1579.18	
09/10/21	401	42	1584.85	140	1584.70	24	1583.27	4.2	1578.84	54	1577.89	19	1584.69	170	1584.05	1.5	1579.18	
09/11/21	401	42	1584.84	139	1584.69	24	1583.27	4.2	1578.84	54	1577.88	19	1584.71	170	1584.05	1.5	1579.18	
09/12/21	400	42	1584.84	139	1584.68	24	1583.26	4.2	1578.84	54	1577.86	19	1584.68	170	1584.04	1.5	1579.17	
09/13/21	400	42	1584.83	139	1584.67	24	1583.26	4.2	1578.84	54	1577.85	19	1584.61	170	1584.04	1.5	1579.17	
09/14/21	400	42	1584.82	139	1584.66	24	1583.25	4.2	1578.84	54	1577.86	19	1584.65	170	1584.03	1.5	1579.16	
09/15/21	400	42	1584.82	139	1584.66	24	1583.24	4.2	1578.84	54	1577.87	19	1584.63	170	1584.02	1.5	1579.16	
09/16/21	400	42	1584.81	139	1584.65	24	1583.23	4.2	1578.84	54	1577.88	19	1584.59	170	1584.02	1.5	1579.15	
09/17/21	400	42	1584.79	139	1584.63	24	1583.21	4.1	1578.84	54	1577.88	19	1584.79	170	1584.00	1.5	1579.15	
09/18/21	400	42	1584.79	139	1584.63	24	1583.21	4.1	1578.84	54	1578.25	19	1584.78	170	1584.00	1.5	1579.15	
09/19/21	400	42	1584.79	139	1584.63	24	1583.21	4.1	1578.84	54	1579.32	19	1584.73	170	1584.00	1.5	1579.15	
09/20/21	400	42	1584.78	139	1584.61	24	1583.20	4.1	1578.84	54	1579.32	19	1584.73	170	1583.99	1.5	1579.14	
09/21/21	400	42	1584.77	139	1584.60	24	1583.19	4.1	1578.84	54	1579.32	19	1584.73	170	1583.98	1.5	1579.14	
09/22/21	400	42	1584.77	139	1584.60	24	1583.20	4.1	1578.84	54	1579.32	19	1584.73	170	1583.98	1.5	1579.14	
09/23/21	400	42	1584.77	139	1584.60	24	1583.19	4.1	1578.84	54	1579.32	19	1584.73	170	1583.98	1.5	1579.14	
09/24/21	400	42	1584.76	139	1584.58	24	1583.18	4.1	1578.84	54	1579.32	19	1584.73	170	1583.97	1.5	1579.13	
09/25/21	400	42	1584.75	139	1584.58	24	1583.18	4.1	1578.84	54	1579.32	19	1584.73	170	1583.96	1.5	1579.13	
09/26/21	400	42	1584.75	139	1584.57	24	1583.18	4.1	1578.84	54	1579.33	19	1584.73	170	1583.96	1.5	1579.13	
09/27/21	400	42	1584.75	139	1584.57	24	1583.17	4.1	1578.84	54	1579.32	19	1584.73	170	1583.96	1.5	1579.12	
09/28/21	399	42	1584.74	139	1584.56	24	1583.17	4.1	1578.84	54	1579.32	19	1584.73	170	1583.96	1.5	1579.12	
09/29/21	399	42	1584.73	139	1584.55	23	1583.16	4.1	1578.84	54	1579.32	19	1584.73	170	1583.94	1.5	1579.12	
09/30/21	399	42	1584.72	139	1584.54	23	1583.15	4.1	1578.84	54	1579.32	19	1584.73	170	1583.94	1.5	1579.11	
Monthly Average	400	42	1584.81	139	1584.65	24	1583.24	4.2	1578.84	54	1578.48	19	1584.70	170	1584.02	1.5	1579.16	
Analytical <sup>1</sup>	Conc (mg/L)		Conc (mg/L)		Date		Conc (mg/L)		Date		Conc (mg/L)		Date		Conc (mg/L)		Date	
Perchlorate	23	9/15/2021	9.9	9/15/2021	150	9/15/2021	150	9/15/2021	170	9/15/2021	80	9/15/2021	71	9/15/2021	48	9/15/2021		
Hexavalent Chromium	ND	9/15/2021	0.0034	9/15/2021	0.32	9/15/2021	0.13	9/15/2021	0.61	9/15/2021	0.46	9/15/2021	0.069	9/15/2021	0.044	9/15/2021		
Total Chromium	ND	9/15/2021	ND	9/15/2021	0.28	9/15/2021	0.11	9/15/2021	0.56	9/15/2021	0.44	9/15/2021	0.062	9/15/2021	0.040	9/15/2021		

Notes:  
 Flow reported as gpm is a daily average calculated from the totalizer reading.  
 ND = Not detected above laboratory method detection limit (ClO<sub>4</sub> = 0.5 ug/L; ClO<sub>3</sub> = 10 ug/L; NO<sub>3</sub>-N = 0.055 mg/L, Cr(VI) = 0.25 ug/L).  
 ART-1, 2, 3, 4, 7B, and 8 have adjacent recovery wells, both of which can be used for extraction. The pumping well can be chosen manually or automatically, based on operational considerations. The wells with transducers are ART-1, -2, -3, -4, -7A, -8, -9, and PC-150  
 1: Analytical results are reported from Eurofins TestAmerica.  
 2: Conducted periodic bucket tests to confirm flow rates for PC-150. Average flow of 1.5 gpm determined from flow tests is presented for 09/01 - 09/30 flows and used for calculation purposes. Flow was steady throughout the month but the totalizer showed zero flow because totalizer units are 1,000 gallons.  
 3: Duplicates taken on 09/15 for well ART-2/2A; average of both values is presented and used for calculations.

Nevada Environmental Response Trust   Groundwater Extraction and Treatment System   Enhanced Operational Metrics																				
Date	I-AR		I-AA		I-AB		I-AC		I-AD		I-B		I-C		I-D		I-E		I-F	
	Flow (gpm)	Water Elevation (ft amsl)	Flow (gpm)	Water Elevation (ft amsl)	Flow (gpm)	Water Elevation (ft amsl)	Flow (gpm)	Water Elevation (ft amsl)	Flow (gpm)	Water Elevation (ft amsl)	Flow <sup>3</sup> (gpm)	Water Elevation (ft amsl)	Flow <sup>3,4</sup> (gpm)	Water Elevation (ft amsl)	Flow <sup>4</sup> (gpm)	Water Elevation (ft amsl)	Flow <sup>4,5</sup> (gpm)	Water Elevation (ft amsl)	Flow (gpm)	Water Elevation (ft amsl)
09/01/21	0.29	1716.28	1.0	1707.58	0.00	1719.74	0.00	1725.48	1.1	1719.80	0.47	1711.67	3.7	1708.56	1.3	1721.42	1.0	1717.20	4.3	1719.92
09/02/21	0.28	1716.31	1.0	1707.58	0.00	1719.69	0.00	1725.48	1.1	1719.81	0.44	1710.94	3.6	1708.56	1.3	1721.45	1.2	1715.94	4.3	1719.96
09/03/21	0.29	1716.13	1.0	1707.58	0.00	1719.68	0.00	1725.47	1.1	1719.83	0.40	1710.82	3.6	1708.58	1.3	1721.47	1.1	1716.26	4.3	1720.00
09/04/21	0.29	1716.17	1.0	1707.59	0.00	1719.68	0.00	1725.47	1.1	1719.82	0.39	1710.52	3.6	1708.57	1.3	1721.49	1.1	1716.43	4.3	1720.03
09/05/21	0.28	1716.33	1.0	1707.60	0.00	1719.73	0.00	1725.45	1.1	1720.33	0.36	1714.32	3.6	1708.69	1.3	1721.52	1.1	1716.49	4.3	1720.06
09/06/21	0.28	1716.46	1.0	1707.58	0.00	1719.75	0.00	1725.45	1.1	1720.35	0.35	1715.25	3.6	1708.62	1.3	1721.54	1.1	1716.60	4.3	1720.09
09/07/21	0.28	1716.68	1.0	1707.58	0.00	1719.73	0.00	1725.45	1.1	1720.23	0.36	1714.86	3.6	1708.65	1.3	1721.55	1.1	1716.68	4.3	1720.12
09/08/21	0.28	1716.57	1.00	1707.59	0.25	1715.76	0.00	1725.44	1.1	1720.18	0.37	1714.71	3.6	1708.61	1.3	1721.57	1.1	1716.68	4.3	1720.15
09/09/21	0.29	1716.20	0.99	1707.59	0.42	1710.71	0.00	1725.43	1.1	1720.14	0.36	1714.50	3.5	1708.64	1.3	1721.58	1.1	1716.85	4.3	1720.18
09/10/21	0.28	1716.28	0.98	1707.59	0.42	1710.76	0.00	1725.42	1.1	1720.16	0.36	1714.71	3.5	1708.64	1.3	1721.59	1.1	1717.02	4.3	1720.22
09/11/21	0.29	1716.19	0.98	1707.59	0.42	1710.17	0.00	1725.41	1.0	1720.48	0.36	1714.75	3.5	1708.68	1.3	1721.60	1.1	1716.98	4.3	1720.25
09/12/21	0.28	1716.27	0.98	1707.59	0.42	1710.30	0.00	1725.42	1.0	1720.54	0.34	1714.51	3.6	1708.70	1.3	1721.61	1.1	1717.07	4.3	1720.29
09/13/21	0.28	1716.41	0.98	1707.59	0.43	1710.13	0.00	1725.42	1.0	1720.57	0.33	1714.59	3.5	1708.72	1.3	1721.62	1.1	1717.13	4.3	1720.32
09/14/21	0.28	1716.36	0.98	1707.59	0.42	1710.52	0.015	1724.93	1.0	1720.63	0.36	1714.44	3.5	1708.73	1.5	1721.64	1.2	1716.05	4.3	1720.34
09/15/21	0.25	1716.81	0.97	1707.63	0.42	1710.33	0.00	1725.78	1.0	1720.65	0.27	1716.14	3.6	1708.82	1.6	1721.53	1.3	1715.58	4.3	1720.32
9/16/21 <sup>2</sup>	0.10	1722.07	0.97	1707.65	0.41	1710.29	0.00	1725.67	1.0	1720.65	0.20	1717.30	3.6	1708.67	1.5	1721.53	1.2	1715.97	4.3	1720.32
09/17/21	0.13	1722.68	0.97	1707.62	0.44	1710.17	0.00	1725.62	0.97	1720.96	0.19	1717.40	3.7	1708.63	1.5	1721.52	1.2	1716.27	4.3	1720.31
09/18/21	0.11	1722.98	0.97	1707.59	0.45	< 1710.00	0.00	1725.59	0.97	1721.01	0.22	1717.14	3.7	1708.65	1.5	1721.53	1.2	1716.35	4.3	1720.33
09/19/21	0.11	1723.10	0.97	1707.59	0.45	< 1710.00	0.00	1725.61	0.98	1720.95	0.23	1716.87	3.6	1708.79	1.5	1721.53	1.2	1716.42	4.3	1720.35
09/20/21	0.11	1723.14	0.97	1707.62	0.45	< 1710.00	0.00	1725.56	0.95	1721.12	0.22	1717.42	3.7	1708.86	1.5	1721.54	1.1	1716.63	4.3	1720.35
09/21/21	0.11	1723.13	0.97	1707.58	0.45	1710.01	0.00	1725.55	0.94	1721.18	0.22	1717.54	3.7	1708.75	1.4	1721.55	1.1	1716.65	4.3	1720.35
09/22/21	0.10	1723.15	0.97	1707.58	0.45	1710.01	0.00	1725.58	0.94	1721.22	0.22	1717.51	3.6	1708.56	1.4	1721.57	1.1	1716.69	4.3	1720.38
09/23/21	0.10	1723.19	0.97	1707.58	0.45	1710.22	0.00	1725.58	0.93	1721.28	0.19	1717.54	3.7	1708.57	1.4	1721.58	1.1	1716.71	4.3	1720.39
09/24/21	0.10	1723.22	0.97	1707.59	0.45	1710.04	0.00	1725.55	0.93	1721.25	0.18	1717.57	3.7	1708.54	1.4	1721.58	1.1	1716.72	4.3	1720.38
09/25/21	0.10	1723.22	0.97	1707.59	0.45	1710.15	0.00	1725.55	0.90	1721.45	0.18	1717.57	3.7	1708.59	1.4	1721.59	1.1	1716.75	4.3	1720.39
09/26/21	0.10	1723.18	0.97	1707.59	0.45	1710.19	0.00	1725.54	0.90	1721.50	0.19	1717.58	3.7	1708.52	1.4	1721.59	1.1	1716.87	4.3	1720.40
09/27/21	0.10	1723.23	0.97	1707.60	0.45	1710.41	0.00	1725.54	0.90	1721.48	0.20	1717.66	3.7	1708.53	1.4	1721.60	1.1	1716.93	4.3	1720.41
09/28/21	0.14	1722.15	0.97	1707.61	0.45	1710.50	0.00	1725.56	0.90	1721.51	0.27	1717.03	3.8	1708.65	1.4	1721.60	1.1	1716.92	4.3	1720.42
09/29/21	0.11	1722.11	0.97	1707.62	0.44	1710.34	0.00	1725.55	0.89	1721.48	0.31	1716.20	3.7	1708.64	1.4	1721.58	1.1	1716.89	4.3	1720.36
09/30/21	0.11	1722.48	0.96	1707.62	0.44	1710.00	0.00	1725.55	0.90	1721.46	0.30	1716.34	3.7	1708.63	1.4	1721.57	1.1	1716.91	4.3	1720.34
Monthly Average	0.20	1719.62	0.98	1707.60	0.33	1712.63	0.00	1725.50	1.01	1720.73	0.29	1715.51	3.6	1708.64	1.4	1721.55	1.1	1716.62	4.3	1720.26
Analytical <sup>1</sup>	Conc (mg/L)	Date	Conc <sup>2</sup> (mg/L)	Date	Conc (mg/L)	Date	Conc (mg/L)	Date	Conc (mg/L)	Date	Conc (mg/L)	Date	Conc (mg/L)	Date	Conc (mg/L)	Date	Conc (mg/L)	Date	Conc (mg/L)	Date
Perchlorate	480	9/8/2021	31	9/8/2021	120	9/8/2021	220	9/14/2021	220	9/14/2021	290	9/8/2021	460	9/8/2021	650	9/8/2021	440	9/8/2021	530	9/8/2021
Hexavalent Chromium	0.76	9/8/2021	0.056	9/8/2021	0.015	9/8/2021	1.9	9/14/2021	1.9	9/14/2021	0.21	9/8/2021	2.8	9/8/2021	5.0	9/8/2021	6.6	9/8/2021	14	9/8/2021
Total Chromium	1.0 B	9/8/2021	0.052 B	9/8/2021	0.017 B	9/8/2021	1.8	9/14/2021	1.8	9/14/2021	0.22 B	9/8/2021	2.8 B	9/8/2021	4.2 B	9/8/2021	5.9 B	9/8/2021	12 B	9/8/2021

Notes:  
 Flow reported as gpm is a daily average calculated from the totalizer reading.  
 B = Compound was found in the blank and sample.  
 1: Analytical results are reported from Eurofins TestAmerica.  
 2: On 09/16, IWF offline intermittently due to maintenance at GWTP.  
 3: On 09/28, I-B, I-C, I-H, I-L, I-N, I-P, I-S, I-T, and I-W adjusted to meet flow targets as directed by the Trust.  
 4: On 09/14, I-C, I-D, I-E, I-N, I-R, and I-S adjusted to meet flow targets as directed by the Trust.  
 5: On 09/12, I-E, I-H, I-R, I-T, and I-U adjusted to meet flow targets as directed by the Trust.  
 6: Duplicates taken on 09/08 for well I-AA; average of both values is presented and used for calculations.

Nevada Environmental Response Trust   Groundwater Extraction and Treatment System   Enhanced Operational Metrics																				
Date	I-G		I-H		I-I		I-J		I-K		I-L		I-M		I-N		I-O		I-P	
	Flow (gpm)	Water Elevation (ft amsl)	Flow <sup>3,5</sup> (gpm)	Water Elevation (ft amsl)	Flow (gpm)	Water Elevation (ft amsl)	Flow (gpm)	Water Elevation (ft amsl)	Flow (gpm)	Water Elevation (ft amsl)	Flow <sup>3,7</sup> (gpm)	Water Elevation (ft amsl)	Flow (gpm)	Water Elevation (ft amsl)	Flow <sup>3,4,8</sup> (gpm)	Water Elevation (ft amsl)	Flow (gpm)	Water Elevation (ft amsl)	Flow <sup>3</sup> (gpm)	Water Elevation (ft amsl)
09/01/21	0.17	1722.44	1.0	1722.09	3.7	1723.67	6.5	1723.15	1.3	1720.83	0.47	1720.90	2.1	1720.62	2.9	1719.73	0.65	1723.55	1.8	1723.48
09/02/21	0.17	1722.46	1.2	1721.43	3.7	1723.49	6.5	1723.23	1.3	1720.86	0.46	1720.86	2.1	1720.65	2.8	1719.76	0.54	1723.40	1.8	1723.37
09/03/21	0.17	1722.47	1.1	1721.45	3.6	1723.41	6.5	1723.24	1.2	1720.87	0.46	1720.85	2.1	1720.68	2.7	1719.81	0.57	1723.32	1.8	1723.30
09/04/21	0.17	1722.48	1.1	1721.52	3.7	1723.37	6.5	1723.20	1.2	1720.88	0.47	1720.84	2.1	1720.71	2.7	1719.87	0.69	1723.27	1.8	1723.26
09/05/21	0.20	1722.46	1.1	1721.57	3.6	1723.35	6.5	1723.07	1.1	1720.99	0.40	1720.98	2.1	1720.76	3.0	1719.69	0.68	1723.26	1.8	1723.25
09/06/21	0.20	1722.45	1.1	1721.57	3.4	1723.33	6.5	1722.98	1.1	1721.05	1.2	1716.46	2.1	1720.78	2.8	1719.79	0.61	1723.24	1.8	1723.23
09/07/21	0.20	1722.46	1.1	1721.58	3.4	1723.32	6.5	1723.00	1.1	1721.05	1.1	1716.73	2.1	1720.81	2.7	1719.86	0.60	1723.23	1.8	1723.23
09/08/21	0.20	1722.47	1.0	1721.62	3.4	1723.31	6.5	1722.99	1.1	1721.04	1.1	1717.04	2.1	1720.80	2.6	1719.93	0.54	1723.22	1.8	1723.23
09/09/21	0.20	1722.48	1.0	1721.65	3.3	1723.30	6.5	1722.98	1.1	1721.05	1.1	1717.10	2.1	1720.81	2.5	1719.97	0.48	1723.21	1.8	1723.21
09/10/21	0.20	1722.49	0.99	1721.64	3.3	1723.29	6.5	1722.96	1.1	1721.06	1.1	1716.98	2.1	1720.83	2.5	1720.01	0.50	1723.20	1.8	1723.19
09/11/21	0.20	1722.50	0.99	1721.64	3.3	1723.28	6.5	1722.96	1.1	1721.06	1.1	1717.10	2.1	1720.86	2.5	1720.05	0.49	1723.19	1.8	1723.18
09/12/21	0.20	1722.52	1.0	1721.63	3.3	1723.28	6.5	1722.97	1.1	1721.07	1.1	1717.14	2.1	1720.88	2.4	1720.09	0.51	1723.18	1.8	1723.18
09/13/21	0.20	1722.53	1.0	1721.62	3.3	1723.28	6.5	1722.98	1.1	1721.08	1.1	1717.12	2.1	1720.90	2.4	1720.14	0.49	1723.18	1.8	1723.18
09/14/21	0.20	1722.53	1.0	1721.61	3.3	1723.27	6.5	1722.95	1.1	1721.07	1.1	1717.03	2.1	1720.91	2.9	1719.91	0.50	1723.17	1.8	1723.18
09/15/21	0.17	1722.57	1.0	1721.73	3.4	1723.28	6.4	1723.08	1.1	1721.10	0.93	1717.94	2.1	1720.93	3.2	1719.71	0.56	1723.20	1.7	1723.22
9/16/21 <sup>2</sup>	0.18	1722.57	1.00	1721.86	3.5	1723.29	6.5	1723.09	1.1	1721.13	0.86	1718.60	2.0	1720.96	3.1	1719.74	0.60	1723.22	1.6	1723.26
09/17/21	0.21	1722.53	0.95	1721.92	3.8	1723.28	6.4	1723.05	1.0	1721.14	0.85	1718.75	2.0	1720.98	3.1	1719.75	0.66	1723.23	1.7	1723.25
09/18/21	0.21	1722.54	0.92	1721.94	3.7	1723.28	6.4	1723.10	1.0	1721.15	0.86	1718.65	2.0	1720.98	3.1	1719.78	0.61	1723.24	1.7	1723.26
09/19/21	0.20	1722.57	0.92	1721.97	3.7	1723.29	6.4	1723.17	1.1	1721.14	0.86	1718.62	2.0	1720.98	3.1	1719.80	0.61	1723.25	1.7	1723.27
09/20/21	0.29	1722.41	0.81	1722.00	3.9	1723.28	6.3	1723.26	0.94	1721.22	0.81	1718.99	2.0	1721.01	3.1	1719.81	0.65	1723.25	1.7	1723.28
09/21/21	0.33	1722.30	0.87	1722.01	3.9	1723.27	6.3	1723.32	0.93	1721.24	0.79	1719.19	2.0	1721.03	3.1	1719.81	0.66	1723.25	1.7	1723.27
09/22/21	0.32	1722.32	0.96	1722.05	3.9	1723.29	6.3	1723.40	0.93	1721.26	0.79	1719.24	2.0	1721.07	3.1	1719.81	0.64	1723.27	1.7	1723.30
09/23/21	0.32	1722.34	0.92	1722.08	3.8	1723.31	6.4	1723.38	0.92	1721.28	0.74	1719.52	2.0	1721.07	3.0	1719.82	0.60	1723.30	1.7	1723.32
09/24/21	0.31	1722.34	0.89	1722.09	3.7	1723.31	6.4	1723.30	0.92	1721.28	0.65	1720.05	2.0	1721.09	3.0	1719.82	0.62	1723.30	1.7	1723.32
09/25/21	0.31	1722.35	0.92	1722.11	3.8	1723.31	6.4	1723.31	0.92	1721.29	0.64	1720.10	1.9	1721.14	3.0	1719.84	0.64	1723.30	1.7	1723.32
09/26/21	0.29	1722.39	0.91	1722.13	3.8	1723.32	6.4	1723.32	0.92	1721.30	0.63	1720.16	2.0	1721.15	3.0	1719.86	0.64	1723.31	1.7	1723.33
09/27/21	0.29	1722.41	0.93	1722.14	3.9	1723.32	6.4	1723.33	0.91	1721.30	0.62	1720.19	2.0	1721.15	3.0	1719.87	0.66	1723.31	1.7	1723.33
09/28/21	0.28	1722.42	1.1	1721.83	3.9	1723.33	6.4	1723.36	0.92	1721.31	0.97	1717.56	1.9	1721.16	3.3	1719.75	0.66	1723.30	1.8	1723.29
09/29/21	0.28	1722.37	1.2	1721.46	4.1	1723.27	6.4	1723.25	0.92	1721.28	1.3	1714.82	1.9	1721.14	3.7	1719.54	0.66	1723.20	1.9	1723.16
09/30/21	0.28	1722.34	1.1	1721.42	4.1	1723.24	6.4	1723.21	0.91	1721.26	1.3	1714.91	1.9	1721.13	3.6	1719.53	0.66	1723.16	1.9	1723.12
Monthly Average	0.23	1722.45	1	1721.78	3.6	1723.32	6.4	1723.15	1.1	1721.12	0.85	1718.48	2.0	1720.93	2.9	1719.83	0.60	1723.26	1.8	1723.26
Analytical <sup>1</sup>	Conc (mg/L)	Date	Conc (mg/L)	Date	Conc (mg/L)	Date	Conc (mg/L)	Date	Conc (mg/L)	Date	Conc (mg/L)	Date	Conc (mg/L)	Date	Conc (mg/L)	Date	Conc (mg/L)	Date	Conc (mg/L)	Date
Perchlorate	840	9/9/2021	850	9/9/2021	560	9/14/2021	230	9/14/2021	290	9/14/2021	280	9/8/2021	480	9/8/2021	450	9/8/2021	670	9/9/2021	770	9/9/2021
Hexavalent Chromium	18	9/9/2021	16	9/9/2021	11	9/14/2021	4.2	9/14/2021	2.9	9/14/2021	1.1	9/8/2021	6.3	9/8/2021	7.4	9/8/2021	15	9/9/2021	17	9/9/2021
Total Chromium	15	9/9/2021	14	9/9/2021	7.0	9/14/2021	3.6	9/14/2021	2.5	9/14/2021	1.1	9/8/2021	5.5	9/8/2021	6.0	9/8/2021	9.2	9/9/2021	11	9/9/2021

Notes:  
 Flow reported as gpm is a daily average calculated from the totalizer reading.  
 B = Compound was found in the blank and sample.  
 1: Analytical results are reported from Eurofins TestAmerica.  
 3: On 09/28, I-B, I-C, I-H, I-L, I-N, I-P, I-S, I-T, and I-W adjusted to meet flow targets as directed by the Trust  
 4: On 09/14, I-C, I-D, I-E, I-N, I-R, and I-S adjusted to meet flow targets as directed by the Trust.  
 5: On 09/12, I-E, I-H, I-R, I-T, and I-U adjusted to meet flow targets as directed by the Trust.  
 7: On 09/06, I-L adjusted to meet flow targets as directed by the Trust.  
 8: On 09/04, I-N and I-U adjusted to meet flow targets as directed by the Trust.

Nevada Environmental Response Trust   Groundwater Extraction and Treatment System   Enhanced Operational Metrics																				
Date	I-Q		I-R		I-S		I-T		I-U		I-V		I-W		I-X		I-Y		I-Z	
	Flow (gpm)	Water Elevation (ft amsl)	Flow <sup>4,5</sup> (gpm)	Water Elevation (ft amsl)	Flow <sup>3,4</sup> (gpm)	Water Elevation (ft amsl)	Flow <sup>3,5</sup> (gpm)	Water Elevation (ft amsl)	Flow <sup>5,8</sup> (gpm)	Water Elevation (ft amsl)	Flow (gpm)	Water Elevation (ft amsl)	Flow <sup>3</sup> (gpm)	Water Elevation (ft amsl)	Flow (gpm)	Water Elevation (ft amsl)	Flow (gpm)	Water Elevation (ft amsl)	Flow (gpm)	Water Elevation (ft amsl)
09/01/21	0.16	1719.22	1.1	1719.04	3.0	1707.31	0.22	1720.90	0.44	1718.71	1.5	1723.83	0.60	1723.78	3.7	1716.42	1.6	1700.25	8.7	1716.39
09/02/21	0.16	1719.28	1.2	1718.18	3.0	1707.28	0.40	1719.79	0.55	1717.27	4.4	1722.79	0.60	1723.64	3.7	1716.46	1.6	1699.55	8.7	1716.22
09/03/21	0.28	1718.78	1.2	1718.41	3.0	1707.28	0.40	1719.81	0.54	1717.38	4.4	1722.70	0.58	1723.55	3.7	1716.51	1.6	1699.37	8.6	1716.03
09/04/21	0.28	1718.78	1.3	1718.76	3.0	1707.28	0.40	1719.86	0.56	1717.61	4.4	1722.65	0.59	1723.50	3.7	1716.56	1.6	1699.96	8.7	1715.92
09/05/21	0.19	1719.17	1.1	1719.40	3.0	1707.27	0.37	1720.04	0.65	1717.07	4.2	1722.64	0.57	1723.50	3.7	1716.60	1.6	1699.40	8.6	1716.01
09/06/21	0.32	1718.63	0.93	1719.52	2.8	1707.22	0.36	1720.15	0.68	1716.90	4.2	1722.61	0.58	1723.47	3.7	1716.62	1.6	1699.75	8.5	1715.90
09/07/21	0.30	1718.73	0.85	1719.74	2.8	1707.21	0.36	1720.17	0.56	1716.76	4.2	1722.60	0.57	1723.46	3.7	1716.65	1.6	1699.29	8.3	1715.87
09/08/21	0.30	1718.78	0.87	1719.83	2.8	1707.19	0.36	1720.20	0.63	1717.38	4.2	1722.59	0.57	1723.45	3.7	1716.68	1.6	1700.15	8.3	1715.83
09/09/21	0.30	1718.80	0.88	1719.76	2.8	1707.17	0.36	1720.20	0.47	1718.42	4.2	1722.58	0.59	1723.41	3.7	1716.73	1.6	1700.19	8.3	1715.78
09/10/21	0.30	1718.82	0.84	1719.78	2.8	1707.16	0.36	1720.17	0.48	1718.60	4.2	1722.56	0.62	1723.36	3.7	1716.77	1.6	1700.18	8.5	1715.72
09/11/21	0.29	1718.87	0.83	1719.77	2.7	1707.15	0.37	1720.16	0.44	1718.66	4.2	1722.55	0.62	1723.35	3.7	1716.80	1.6	1700.08	8.6	1715.67
09/12/21	0.28	1718.92	0.84	1719.75	2.7	1707.16	0.37	1720.15	0.49	1718.82	4.1	1722.55	0.63	1723.35	3.7	1716.84	1.6	1700.28	8.6	1715.67
09/13/21	0.28	1718.96	0.84	1719.76	2.7	1706.95	0.37	1720.16	0.51	1718.85	4.1	1722.55	0.62	1723.35	3.7	1716.88	1.6	1699.25	8.6	1715.66
09/14/21	0.28	1718.98	1.0	1718.75	2.7	1707.13	0.37	1720.14	0.55	1718.86	4.1	1722.54	0.61	1723.34	3.7	1716.86	1.5	1699.80	8.6	1715.61
09/15/21	0.34	1718.68	1.1	1718.69	2.7	1707.16	0.35	1720.31	0.43	1719.06	4.2	1722.56	0.59	1723.42	3.7	1716.86	1.5	1700.09	8.6	1715.79
9/16/21 <sup>2</sup>	0.25	1719.09	0.99	1719.35	2.7	1707.14	0.33	1720.46	0.43	1719.03	4.2	1722.57	0.56	1723.48	3.7	1716.86	1.6	1700.29	8.6	1715.85
09/17/21	0.20	1719.32	1.00	1719.67	2.7	1707.12	0.32	1720.53	0.48	1718.62	4.4	1722.56	0.48	1723.57	3.7	1716.86	1.6	1700.21	8.7	1715.78
09/18/21	0.19	1719.39	0.96	1719.62	2.7	1707.11	0.32	1720.57	0.56	1718.18	4.4	1722.57	0.49	1723.59	3.7	1716.86	1.6	1700.32	8.7	1715.71
09/19/21	0.18	1719.44	1.00	1719.52	2.7	1707.11	0.31	1720.61	0.57	1718.28	4.4	1722.58	0.45	1723.64	3.7	1716.87	1.6	1700.34	8.7	1715.75
09/20/21	0.25	1719.16	1.0	1719.72	2.7	1707.15	0.31	1720.63	0.54	1718.57	4.4	1722.58	0.41	1723.69	3.7	1716.89	1.6	1700.37	8.7	1715.80
09/21/21	0.28	1718.98	0.94	1719.75	2.7	1707.11	0.31	1720.58	0.54	1718.66	4.4	1722.56	0.40	1723.70	3.7	1716.83	1.6	1700.36	8.8	1715.77
09/22/21	0.28	1719.00	0.94	1719.82	2.7	1707.10	0.31	1720.61	0.53	1718.82	4.4	1722.58	0.38	1723.73	3.7	1716.85	1.6	1700.38	8.9	1715.86
09/23/21	0.28	1719.02	0.94	1719.82	2.7	1707.11	0.31	1720.62	0.54	1718.74	4.4	1722.61	0.36	1723.77	3.7	1716.85	1.6	1700.26	8.6	1715.88
09/24/21	0.28	1719.01	0.92	1719.79	2.8	1707.11	0.31	1720.61	0.53	1718.72	4.4	1722.61	0.38	1723.75	3.7	1716.84	1.6	1700.08	8.6	1715.80
09/25/21	0.28	1719.03	1.0	1719.82	2.8	1707.10	0.31	1720.62	0.47	1718.79	4.4	1722.61	0.39	1723.75	3.7	1716.85	1.6	1700.29	8.6	1715.80
09/26/21	0.27	1719.05	1.1	1719.81	2.8	1707.10	0.31	1720.63	0.49	1718.84	4.4	1722.61	0.38	1723.78	3.7	1716.86	1.6	1700.37	8.2	1715.81
09/27/21	0.27	1719.07	1.2	1719.80	2.8	1707.10	0.31	1720.64	0.46	1718.87	4.4	1722.62	0.39	1723.78	3.7	1716.87	1.6	1700.35	8.0	1715.81
09/28/21	0.27	1719.08	1	1719.75	2.7	1707.33	0.41	1719.83	0.57	1717.69	4.4	1722.62	0.62	1723.61	3.7	1716.86	1.6	1700.31	8.0	1715.87
09/29/21	0.27	1719.05	0.98	1719.59	2.6	1706.98	0.48	1719.06	0.58	1717.23	4.4	1722.55	0.87	1723.35	3.7	1716.77	1.5	1700.20	8.6	1715.69
09/30/21	0.26	1719.07	0.99	1719.58	2.5	1706.97	0.48	1719.03	0.60	1717.58	4.4	1722.50	0.89	1723.28	3.7	1716.73	1.5	1699.65	8.9	1715.58
Monthly Average	0.26	1719.01	1.00	1719.48	2.8	1707.15	0.35	1720.24	0.53	1718.23	4.2	1722.63	0.55	1723.55	3.7	1716.76	1.6	1700.05	8.6	1715.83
Analytical <sup>1</sup>	Conc (mg/L)	Date	Conc (mg/L)	Date	Conc (mg/L)	Date	Conc (mg/L)	Date	Conc (mg/L)	Date	Conc (mg/L)	Date	Conc (mg/L)	Date	Conc (mg/L)	Date	Conc (mg/L)	Date	Conc (mg/L)	Date
Perchlorate	710	9/9/2021	710	9/8/2021	360	9/8/2021	1,000	9/9/2021	970	9/9/2021	610	9/14/2021	740	9/9/2021	640	9/8/2021	470	9/8/2021	280	9/14/2021
Hexavalent Chromium	19	9/9/2021	0.83	9/8/2021	1.5	9/8/2021	25	9/9/2021	20	9/9/2021	9.9	9/14/2021	15	9/9/2021	11	9/8/2021	1.1	9/8/2021	7.5	9/14/2021
Total Chromium	14	9/9/2021	0.81	9/8/2021	1.4	9/8/2021	14	9/9/2021	14	9/9/2021	7.0	9/14/2021	9.8	9/9/2021	9.3	9/8/2021	1.1	9/8/2021	5.9	9/14/2021

Notes:  
 Flow reported as gpm is a daily average calculated from the totalizer reading.  
 B = Compound was found in the blank and sample.  
 1: Analytical results are reported from Eurofins TestAmerica.  
 3: On 09/28, I-B, I-C, I-H, I-L, I-N, I-P, I-S, I-T, and I-W adjusted to meet flow targets as directed by the Trust.  
 4: On 09/14, I-C, I-D, I-E, I-R, and I-S adjusted to meet flow targets as directed by the Trust.  
 5: On 09/12, I-E, I-H, I-R, I-T, and I-U adjusted to meet flow targets as directed by the Trust.  
 8: On 09/04, I-N and I-U adjusted to meet flow targets as directed by the Trust.

Nevada Environmental Response Trust   Groundwater Extraction and Treatment System   Enhanced Operational Metrics																
Date	LS #2	GWTP Effluent <sup>1</sup>				GW-11 Influent <sup>1</sup>				FBR Plant Influent <sup>1</sup>						
	Flow (gpm)	Flow (gpm)	TA - Cr (TR) (mg/L)	TA - Cr (VI) (mg/L)	TA - ClO <sub>4</sub> (mg/L)	Flow <sup>4</sup> (gpm)	TA - Cr (TR) (mg/L)	TA - Cr (VI) (mg/L)	TA - ClO <sub>4</sub> (mg/L)	Flow <sup>3</sup> (gpm)	TA - ClO <sub>4</sub> (mg/L)	ETI - ClO <sub>4</sub> (mg/L)	TA - ClO <sub>3</sub> (mg/L)	TA - NO <sub>3</sub> - N (mg/L)	TA - Cr (TR) (mg/L)	TA - Cr (VI) (mg/L)
09/01/21	867	56	0.55 B	ND	510	0.00				1,005		0				
09/02/21	867	59				0.00				991		0				
09/03/21	868	59				0.00				983		0				
09/04/21	867	59				0.00				975	24.0	0				
09/05/21	867	58				0.00				968		2				
09/06/21	867	59				0.00				983		4				
09/07/21	873	59				0.00				997		5	130	11	0.0082 J	0.011
09/08/21	866	59	0.21 B	0.0003 J	430	0.00				962		0				
09/09/21	866	59				0.00				1,010		0				
09/10/21	865	59				0.00				1,037		0				
09/11/21	865	59				0.00				950	65	0				
09/12/21	865	58				0.00				923		0				
09/13/21	865	59				4.0	0.072	0.003	78	925		0		11	0.018	0.019
09/14/21	864	60				0.00				924		0				
09/15/21	865	60	0.29	ND	450	0.00				925		0				
09/16/21	865	57				0.00				922		1				
09/17/21	866	73				0.00				939		0				
09/18/21	865	74				0.00				939	68	0				
09/19/21	864	74				0.00				938		2				
09/20/21	864	72				0.00				936		1		11	0.018	0.022
09/21/21	864	74				0.00				938		2				
09/22/21	865	74	0.14	ND	550	0.00				939		4				
09/23/21	864	73				0.00				937		1				
09/24/21	866	72				0.00				938		0				
09/25/21	864	72				0.00				936	87	0				
09/26/21	863	73				0.00				937		0				
09/27/21	864	74				0.00				938		0		10	0.020 B	0.024
09/28/21	864	75				0.00				939		0				
09/29/21	871	75	0.85	ND	580	0.00				946		7				
09/30/21	864	78				0.00				942		0				
Monthly Average <sup>2</sup>	866	66	ND	ND	137	0.13	0.072	0.003	78	954	62	1.0	130	10.7	0.015	0.019

Notes:  
 Flow reported as gpm is a daily average calculated from the totalizer reading. The only exceptions are the instantaneous flow readings recorded for the 1st and 2nd Stage FBR flows  
 B = Compound was found in the blank and sample.  
 ND = Not detected above laboratory method detection limit (ClO<sub>4</sub> = 0.5 ug/L; ClO<sub>3</sub> = 10 ug/L; NO<sub>3</sub>-N = 0.055 mg/L, Cr(VI) = 0.25 ug/L).  
 1: ETI = Envirogen internal process control data, TA = Eurofins TestAmerica data  
 2: All average concentrations reported are monthly flow weighted averages.  
 3: On 09/10, P-101 flow meter failed.

Table 4 - Treatment Plant Operational Metrics

Date	1st Stage FBR <sup>4</sup>			2nd Stage FBR <sup>4</sup>			FBR Plant Effluent							
	Flow (gpm)	pH (s.u.)	ORP (mV)	Flow (gpm)	pH (s.u.)	ORP (mV)	Flow <sup>5</sup> (gpm)	TA - ClO <sub>2</sub> (mg/L)	ETI - ClO <sub>4</sub> (mg/L)	TA - ClO <sub>3</sub> (mg/L)	TA - Cr (TR) (mg/L)	TA - Cr (VI) (mg/L)	TA - NO <sub>3</sub> - N (mg/L)	ETI - Turbidity (NTU)
09/01/21	965	6.4	-364	922	6.5	-414	979		0.00					32
09/02/21	967	6.4	-357	726	6.5	-416	977		0.00					31
09/03/21	958	6.4	-362	889	6.5	-424	968		0.00					25
09/04/21	961	6.4	-367	725	6.5	-426	974	0.00096 J	0.00					26
09/05/21	964	6.4	-342	711	6.5	-429	968		0.00					17
09/06/21	956	6.4	-346	946	6.5	-431	761		0.00					25
09/07/21	909	6.4	-382	832	6.5	-430	989		0.00	ND	ND	ND	0.051	17
09/08/21	970	6.5	-402	912	6.4	-427	1,020		0.00					18
09/09/21	959	6.5	-406	712	6.4	-422	793		0.00					18
09/10/21	947	6.5	-403	899	6.4	-422	958		0.00					20
09/11/21	966	6.5	-412	833	6.4	-425	963	ND	0.00					22
09/12/21	971	6.6	-412	839	6.4	-425	974		0.00					17
09/13/21	980	6.4	-356	859	6.3	-383	583		0.00		ND	ND	0.022 J	14
09/14/21	961	6.3	-364	875	6.3	-383	981		0.00					90
09/15/21	939	6.4	-386	727	6.3	-385	975		0.00					12
09/16/21	935	6.4	-385	870	6.3	-390	961		0.00					15
09/17/21	977	6.4	-388	782	6.3	-387	983		0.00					10
09/18/21	964	6.4	-361	910	6.3	-389	974	ND	0.00					13
09/19/21	974	6.4	-394	677	6.3	-388	780		0.00					11
09/20/21	959	6.4	-397	911	6.3	-389	791		0.00		ND	ND	0.094	11
09/21/21	976	6.4	-328	864	6.3	-386	970		0.00					14
09/22/21	975	6.4	-348	926	6.4	-388	969		0.00					20
09/23/21	965	6.3	-306	738	6.3	-418	734		0.00					31
09/24/21	975	6.3	-280	788	6.4	-423	974		0.00					13
09/25/21	966	6.3	-309	887	6.4	-395	971	ND	0.00					11
09/26/21	958	6.3	-323	771	6.4	-427	966		0.00					10
09/27/21	963	6.3	-339	882	6.5	-429	973		0.00		ND	ND	0.060	12
09/28/21	967	6.3	-352	807	6.5	-10	617		0.00					14
09/29/21	986	6.3	-377	820	6.5	-409	993		0.00					7
09/30/21	970	6.3	-312	897	6.3	106.608	971		0.00					26
Monthly Average <sup>2</sup>	963	6.4	-362	831	6.4	-378	916	0.000	ND	ND	ND	ND	ND	20

Notes:

Flow reported as gpm is a daily average calculated from the totalizer reading. The only exceptions are the instantaneous flow readings recorded for the 1st and 2nd Stage FBR flows

ND = Not detected above laboratory method detection limit (ClO<sub>2</sub> = 0.5 ug/L; ClO<sub>3</sub> = 10 ug/L; NO<sub>3</sub>-N = 0.055 mg/L, Cr(VI) = 0.25 ug/L).

J = Result is less than the reporting limit but greater than or equal to the method detection limit and the concentration is an approximate value

1: ETI = Envirogen internal process control data, TA = Eurofins TestAmerica data

2: All average concentrations reported are monthly flow weighted averages.

4: For 1st and 2nd stage FBRs, flow measurements are collected from the influent lines and pH and ORP samples are collected from the recycle line:

5: FBR Plant Effluent represents effluent discharged to Las Vegas Wash. While this may represent the entirety of the FBR Plant effluent, any diversions to GW-11 are subtracted from the original effluent flow

GW-11 Level Monitoring <sup>1</sup>		
Date	Field Measurement (ft)	Volume (MG)
09/01/21	31.7	34.4
09/15/21	31.7	34.4

GW-11 Leak Detection Monitoring				
Date	Amount Pumped <sup>2</sup> (gallons)			
	NW Corner	NE Corner	SW Corner	SE Corner
9/8/2021	0	0	532.2	0
9/22/2021	0	0	614.9	0

GW-11 Composite Sample <sup>3</sup>		
Analytes	Concentration	Units
Perchlorate	0.95	mg/L
Chlorate	0.99	mg/L
Ammonia as N	ND	mg/L
Total Phosphorus	0.83	mg/L
Total Dissolved Solids (TDS)	12,000 D	mg/L
Total Suspended Solids (TSS)	42	mg/L
pH	8.4 HF	s.u.
Calcium	610 B	mg/L
Iron	0.37	mg/L
Chromium (total)	0.0230	mg/L
Chromium VI	ND	mg/L
Chloride	4,800	mg/L
Nitrate as N	0.056	mg/L
Sulfate	4,000	mg/L

## Notes:

B = Compound was found in the blank and sample.

HF = Field parameter with a holding time of 15 minutes. Test performed by laboratory at client's request.

J = Result is less than the reporting limit but greater than or equal to the method detection limit and the concentration is an approximate value.

ND = Not detected above laboratory method detection limit (NH<sub>3</sub>-N= 0.1 mg/L; Total P = 0.025 ug/L; Cr(VI) = 0.25 ug/L).

1: A transducer installed along the eastern berm provides water pressure measurements that are correlated to elevations for calculation of water depths. Results from a December 2018 bathymetric survey of the pond will be used to identify adjustment to the procedure, if necessary.

2: Pumping occurs over three consecutive days. The total amount pumped over the three day period is listed with the last day pumping occurred.

3: GW-11 Corner Composite Sample is collected quarterly, most recent sampling results are presented. Sampled on: August 18, 2021



Nevada Environmental Response Trust   Groundwater Extraction and Treatment System   Enhanced Operational Metrics						
Date	Flow <sup>1</sup> (gpm)	FBR Influent Concentration			Influent Function Load <sup>3</sup> (lbs/day)	6 Month Rolling Average (lbs/day)
		ClO <sub>4</sub> <sup>2</sup> (mg/L)	NO <sub>3</sub> as N (mg/L)	ClO <sub>3</sub> (mg/L)		
Oct 2020	1,029	64	9	94	441	516
Nov 2020	1,037	56	10	100	451	501
Dec 2020	1,027	59	9	130	507	480
Jan 2021	1,047	54	8.5	110	454	465
Feb 2021	1,023	61	8	110	457	465
March 2021	1,012	56	7	120	447	467
April 2021	1,027	55	6	110	420	460
May 2021	1,031	58	8	120	476	456
June 2021	1,027	58	8	120	470	454
July 2021	1,043	62	8	120	487	460
Aug 2021	1,063	62	9	120	502	467
Sep 2021	954	62	11	130	492	475

Notes:

Concentrations and flow are presented as monthly average.

1: Flow used in loading calculation is average monthly FBR influent flow.

2: The AP-5 wash water feed rate was increased on October 1, 2019 in accordance with the higher seasonal ammonia permit limits beginning October 1. The AP-5 wash water feed rate was decreased in March 2020 to prepare for the lower seasonal ammonia permit limits beginning April 1. AP-5 sediment mixing and solids washing activities were completed on January 4, 2020. AP-5 tank processing was completed on 7/15/20.

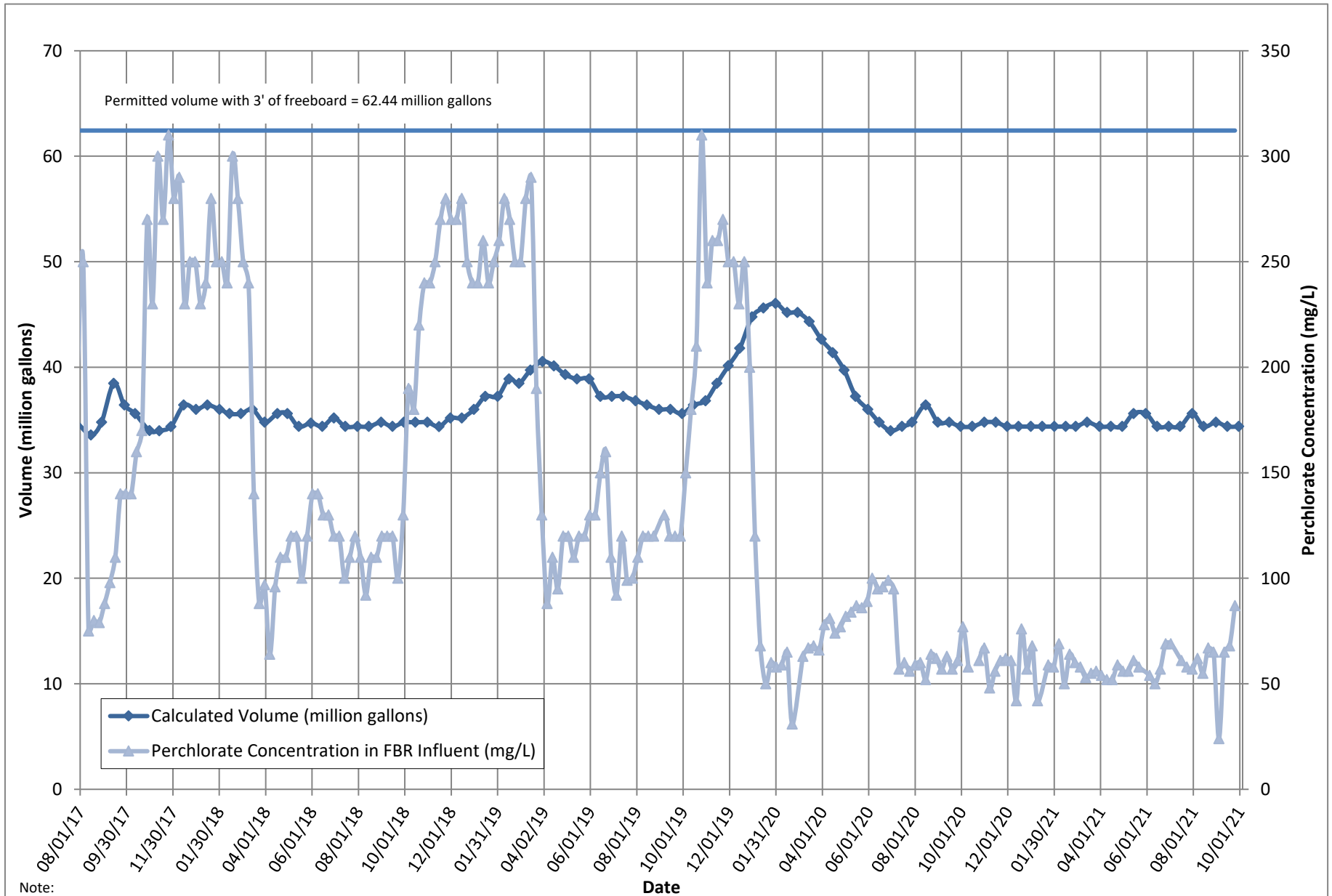
3: FBR loading calculated as  $[(0.9 \times \text{NO}_3 \text{ as N} + 0.17 \times \text{ClO}_3 + 0.18 \times \text{ClO}_4) \times \text{Flow} \times 1440 / 1000000 \times 8.34]$ .

Table 7 - AP Area Operational Metrics

Nevada Environmental Response Trust   Groundwater Extraction and Treatment System   Enhanced Operational Metrics																
Date	E1-1		E1-2		E1-3		E2-1		E2-2		E2-3		E2-4		E2-5	
	Flow (gpm)	Water Elevation (ft amsl)	Flow (gpm)	Water Elevation (ft amsl)	Flow (gpm)	Water Elevation (ft amsl)	Flow (gpm)	Water Elevation (ft amsl)	Flow (gpm)	Water Elevation (ft amsl)	Flow (gpm)	Water Elevation (ft amsl)	Flow <sup>3</sup> (gpm)	Water Elevation (ft amsl)	Flow (gpm)	Water Elevation (ft amsl)
9/01/21 <sup>2</sup>	2.6	1712.68	0.90	1713.96	0.84	1713.11	1.1	1715.67	1.3	1714.48	1.2	1717.81	1.4	1715.48	0.41	1715.17
09/02/21	2.7	1712.25	0.93	1712.48	0.96	1712.46	0.87	1715.32	1.5	1714.94	1.3	1716.87	1.5	1714.76	0.46	1714.92
09/03/21	2.7	1711.52	0.95	1713.36	0.90	1712.29	1.5	1714.71	1.4	1714.71	1.2	1717.40	1.5	1714.21	0.45	1715.12
09/04/21	2.7	1711.75	0.96	1713.25	0.90	1712.27	1.2	1714.62	1.4	1714.67	1.3	1716.83	1.4	1714.60	0.46	1714.79
09/05/21	2.7	1712.08	0.96	1713.21	0.86	1713.10	1.2	1714.75	1.4	1714.87	1.2	1717.20	1.3	1715.26	0.45	1715.37
09/06/21	2.8	1712.72	1.0	1713.61	0.87	1712.47	1.2	1715.15	1.5	1715.72	1.1	1716.70	1.4	1715.66	0.46	1715.81
09/07/21	2.7	1710.23	0.96	1710.76	0.86	1712.17	1.2	1715.12	1.5	1715.50	1.1	1719.09	1.4	1714.60	0.42	1716.89
09/08/21	2.8	1709.88	1.0	1712.73	0.86	1713.92	1.2	1713.98	1.4	1715.12	1.4	1716.74	1.4	1719.01	0.44	1716.47
09/09/21	2.5	1711.10	1.0	1711.35	0.96	1709.72	1.2	1712.92	1.4	1715.10	1.0	1718.83	1.4	1717.31	0.42	1716.02
09/10/21	2.5	1711.35	1.0	1712.84	0.83	1711.85	1.2	1714.54	1.3	1716.08	1.3	1718.05	1.4	1718.06	0.44	1716.42
09/11/21	2.5	1711.28	1.0	1712.88	0.88	1711.50	1.2	1714.61	1.3	1716.31	1.3	1716.70	1.4	1716.96	0.43	1716.06
09/12/21	2.4	1711.15	0.97	1713.16	0.88	1711.04	1.2	1715.52	1.3	1715.97	1.3	1718.23	1.4	1715.76	0.44	1716.51
09/13/21	2.5	1712.58	0.97	1713.25	0.93	1712.22	1.1	1714.62	1.1	1717.07	1.2	1720.40	1.4	1715.66	0.34	1720.76
09/14/21	2.5	1712.01	0.94	1713.13	0.82	1712.51	1.2	1715.97	1.3	1715.08	1.3	1718.51	1.4	1714.00	0.32	1715.28
9/15/21 <sup>2</sup>	2.5	1712.35	0.9	1713.36	0.81	1714.47	1.2	1714.51	1.2	1721.87	1.3	1722.30	1.5	1716.20	0.63	1715.17
09/16/21	2.8	1710.98	0.95	1713.36	0.85	1712.64	1.2	1714.40	1.2	1713.74	1.7	1714.17	1.4	1716.86	0.50	1713.52
09/17/21	2.7	1711.03	0.94	1713.36	0.94	1712.81	1.2	1713.81	1.2	1713.97	1.6	1714.40	1.3	1717.51	0.47	1716.41
09/18/21	2.7	1710.85	0.91	1712.06	0.87	1712.32	1.2	1713.60	1.2	1714.17	1.6	1714.60	1.3	1717.49	0.45	1716.02
09/19/21	2.7	1711.18	0.92	1712.01	0.89	1712.26	1.2	1713.52	1.2	1714.01	1.6	1714.44	1.3	1717.50	0.46	1715.97
09/20/21	2.7	1710.99	0.90	1714.18	0.77	1712.70	1.2	1714.14	1.2	1713.60	1.6	1714.03	1.3	1716.63	0.43	1716.14
9/21/21 <sup>2</sup>	2.7	1710.78	0.87	1713.96	0.92	1712.74	1.2	1714.52	1.2	1714.11	1.6	1714.54	1.3	1716.80	0.42	1715.02
09/22/21	2.7	1712.63	0.88	1713.91	0.86	1712.77	1.1	1715.34	1.1	1718.62	1.6	1714.65	0.07	1719.59	0.39	1718.20
09/23/21	2.6	1713.53	0.88	1714.54	0.81	1713.04	1.2	1715.22	1.3	1716.97	1.6	1713.23	0.01	1713.76	0.46	1713.87
09/24/21	2.7	1713.32	1.0	1714.03	0.92	1712.99	1.2	1714.77	1.3	1716.29	1.6	1712.98	0.91	1713.34	0.54	1712.75
09/25/21	2.8	1713.21	1.1	1714.20	0.93	1712.87	1.3	1714.85	1.4	1716.80	1.7	1712.87	0.94	1713.74	0.56	1713.01
09/26/21	2.3	1713.03	0.89	1713.08	0.77	1712.54	1.1	1714.85	1.1	1716.72	1.4	1715.60	0.77	1721.79	0.48	1713.98
09/27/21	2.6	1713.05	1.0	1713.29	0.86	1712.70	1.1	1714.47	1.3	1713.69	1.5	1713.90	1.2	1715.97	0.53	1709.89
09/28/21	2.6	1713.16	0.98	1713.37	0.74	1712.84	1.1	1714.79	1.3	1715.02	1.5	1714.73	0.88	1719.64	0.51	1711.98
09/29/21	2.6	1713.34	0.93	1710.73	1.0	1712.07	1.1	1713.54	1.3	1715.10	1.5	1711.23	1.1	1716.62	0.52	1711.07
09/30/21	2.6	1713.24	0.95	1711.01	0.83	1712.01	1.1	1715.31	1.3	1715.42	1.2	1718.40	0.04	1716.79	0.49	1710.60
Monthly Average	2.6	1711.98	0.96	1713.02	0.87	1712.48	1.2	1714.64	1.3	1715.53	1.4	1716.18	1.2	1716.39	0.46	1714.97
Analytical <sup>1</sup>	Conc (mg/L)	Date	Conc (mg/L)	Date	Conc (mg/L)	Date	Conc (mg/L)	Date	Conc (mg/L)	Date	Conc <sup>4</sup> (mg/L)	Date	Conc (mg/L)	Date	Conc (mg/L)	Date
Perchlorate	610	9/13/2021	1,200	9/13/2021	410	9/13/2021	100	9/13/2021	420	9/13/2021	990	9/13/2021	1,100	9/13/2021	1,300	9/13/2021
Hexavalent Chromium	0.082	9/13/2021	0.51	9/13/2021	0.70	9/13/2021	0.030	9/13/2021	0.011	9/13/2021	0.079	9/13/2021	0.077	9/13/2021	0.19	9/13/2021
Total Chromium	0.075	9/13/2021	0.48	9/13/2021	0.66	9/13/2021	0.029	9/13/2021	0.030	9/13/2021	0.092	9/13/2021	0.076	9/13/2021	0.16	9/13/2021

Notes:  
 Flow reported as gpm is a daily average calculated from the totalizer reading.  
 The flow rate at individual wells is adjusted daily to maintain the water level in the wells above the pump.  
 1: Analytical results are reported from Eurofins TestAmerica.  
 2: On 09/01, 09/15, and 09/21, AP wells offline briefly for maintenance.  
 3: On 09/06, E2-4 totalizer failed. Averaged flows are presented from 09/07 to 09/13.  
 4: Duplicates taken on 09/13 for well E2-3; average of both values is presented and used for calculations.

Figure 1 - GW-11 Pond Volume and FBR Influent Perchlorate Concentration



Note:

1. Treatment of AP-5 wash water began on July 17, 2017 and was suspended on August 4, 2017 to allow Envirogen to evaluate internal process controls to meet discharge limits. Treatment of AP-5 wash water resumed on August 31, 2017. The AP-5 wash water feed rate was increased on October 1, 2019 in accordance with the higher seasonal ammonia permit limits beginning October 1. The AP-5 wash water feed rate was decreased in March 2019 to prepare for the lower seasonal ammonia permit limits beginning April 1. AP-5 tank processing was completed on 7/15/20.

Figure 2 - FBR Equivalent Loading Calculation

